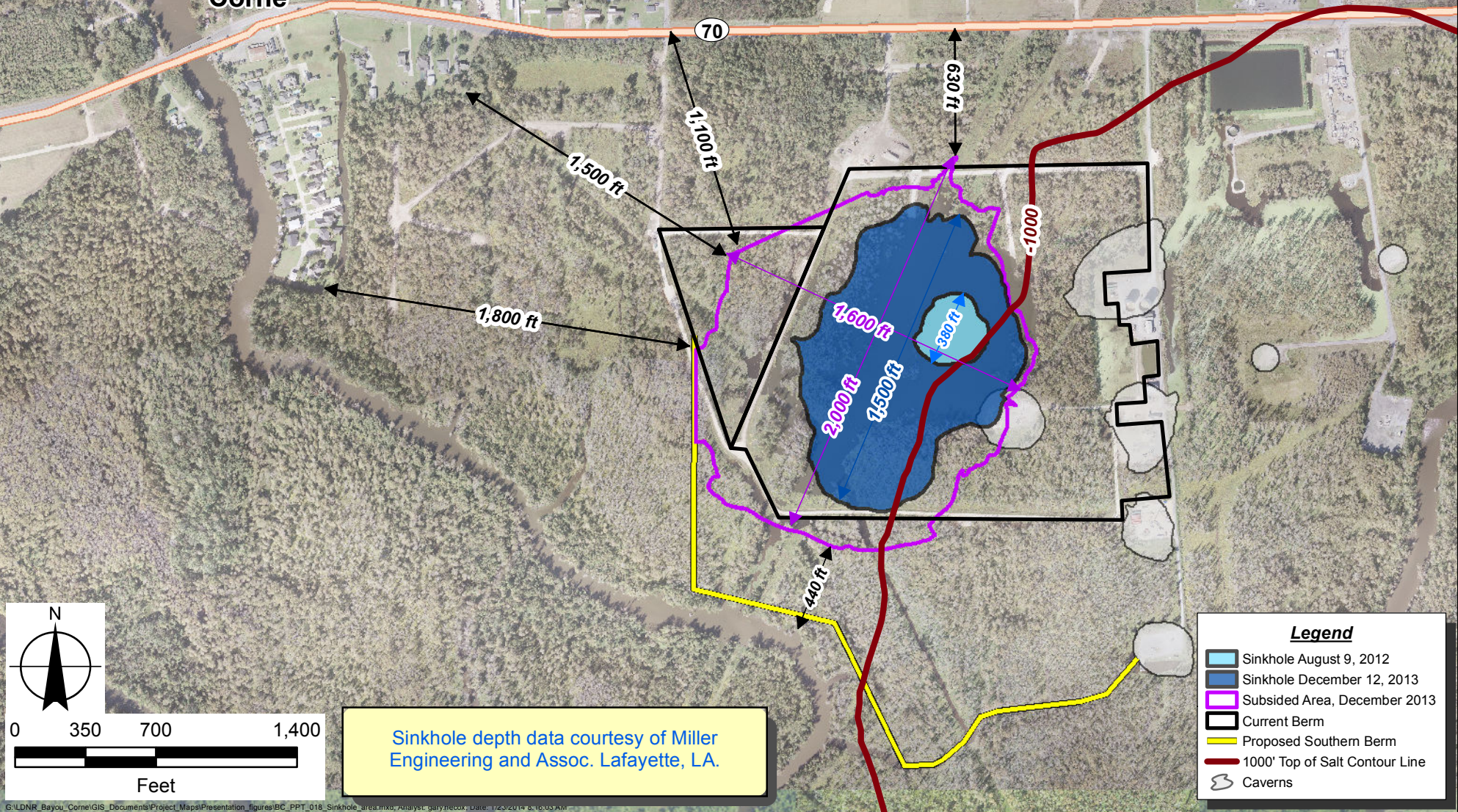


# BAYOU CORNE SINKHOLE GROWTH

Bayou Corne

70



Sinkhole depth data courtesy of Miller Engineering and Assoc. Lafayette, LA.

- Legend**
- Sinkhole August 9, 2012
  - Sinkhole December 12, 2013
  - Subsided Area, December 2013
  - Current Berm
  - Proposed Southern Berm
  - 1000' Top of Salt Contour Line
  - Caverns