



Texas Brine Company, LLC

1301 Highway 70
Belle Rose, LA 70341
Phone: 985-369-6657
Fax: 985-369-7873



May 24, 2013

Commissioner James H. Welsh
P.O. Box 94275
Baton Rouge, LA 70804

RE: In response to State of Louisiana Department of Natural Resources Office of Conservation's Second Amendment to Declaration of Emergency and Directive

Commissioner Welsh,

In response to the Second Amendment and Declaration of Emergency and Directive order issued by the Louisiana Department of Natural Resources (LDNR), Office of Conservation on September 25, 2012, Texas Brine Company, LLC (TPC) understands the seven items listed in the document.

In the above mentioned, TBC was specifically directed and ordered to perform certain tasks outlined in the above mentioned document. Below are the required responses, as directed.

1. TBC's counsel provided LDNR legal counsel with a response to Directives 1-3 on September 28, 2012.
2. TBC understands Directive 4, which is to provide all daily logs and field notes from all contractors conducting investigation into subsidence and natural gas bubbling. The Daily Action Summary and results for current information can be found in the Attachment section of this report.
3. TBC understands Directive 5, which directs TBC to immediately allow for split or share any sample taken on site related to Well 3A (Serial Number 974265), the cavern, other wells facilities or other site locations. The Daily Action Summary of today's collection can be found in Attachment section of this report.
4. TBC understands Directive 6, which directs TBC to immediately report the results (final and preliminary) of any tests, logs samples or data collection performed on Well 3A, the cavern, other wells, facilities or site locations that indicate a change in any previously known conditions related to the investigation of the subsidence or natural gas bubbling

events, and continue to report any such results. The Daily Action Summary and the Results related to this Directive can be found in Attachment section of this report.

5. TBC understands the Directive 7, which states that TBC will provide a daily summary of all tests, or logs performed or samples taken from Well 3A and the cavern as well as any results of those tests or logs, including preliminary as of September 25, 2012 and going forward. The Daily Summary and Results related to this Directive can be found in Attachment section of this report.

Please note that the drilling rig used for the Observation Well 3A has been removed and the site is being rigged down and returned to pre-drilling condition. As such, daily drilling reports for this well have ceased. Plans are being made for longer term potential gas venting/flaring requirements and possible hydrocarbon material recover from Well 3A.

In addition, previous daily summary reports issued to LDNR have included significant duplicate information as there is a fair amount of overlap in the information requested in each of the Directives included in the September 25, 2012 order. All requested information associated with the Directives issued in the September 25, 2012 order are included in the Attachment section of this report.

TBC believes that the submittal of this report satisfies the requirements of the Declaration of Emergency and Directive issued on September 25, 2012. As directed this report is submitted by email to conservationorder@la.gov, ref. "Emergency Declaration-Texas Brine Company LLC-9/25/2012.



Bruce E. Martin

Vice President, Operations

Texas Brine Company, LLC

Summary Table for Daily Events

TBC Oxy Grand Bayou Data Management-Environmental										
Contractor	Responsibilities	Collected By		Date Collected		Delivered to Lab	Results from Lab	Laboratory	Method	Date to Agencies
Sage	Stationary Air Monitoring	Eric Rucinski - 07:45 - 09:00 Pete Hyatt IV (Code Red) - 07:00 - 17:00		5/23/2013		NA	NA	NA	AreaRAE Monitors	5/24/2013
	Residential Air Monitoring	Sage has been requested to suspend bimonthly residential air monitoring. Therefore, Sage will discontinue these activities.		NA		NA	NA	NA	NA	NA
	Gas Seep Sampling	Steve Shaughnessy NSDBS-6 at 16:55 NSDBS-14 at 16:35 NSDBS-15 at 16:02 NSDBS-23 at 16:17 NSDBS-26 at 08:40 NSDBS-64 at 08:16		5/23/2013		Yes (via Accutest courier service) for samples collected before 15:15	No	SPL Isotech	Sulfur Isotopic	upon receipt of results from labs
	Well Gas Sampling	Steve Shaughnessy ORW-1 at 10:33 ORW-5 at 13:26 ORW-6 at 10:43 ORW-8 at 13:15 ORW-9 at 11:13 ORW-12 at 14:08 ORW-13 at 13:50 ORW-14 at 13:58 ORW-15 at 10:20 ORW-16 at 11:30 ORW-17 at 10:53 ORW-19 at 11:01 ORW-22 at 10:10 ORW-28 at 10:05		5/23/2013		Yes (via Accutest courier service) for samples collected before 15:15	No	SPL Isotech	Sulfur Isotopic	upon receipt of results from labs
	Under Slab Gas Sampling	No work performed		5/23/2013		NA	NA	NA	NA	NA
	Indoor Air Monitoring	Jill Martin & Eric Rucinski		5/23/2013		NA	NA	NA	Hand-held Multipro Monitor	5/24/2013
Respec	Inclinometers/Tilt Meters	5/23/2013	NA	NA	NA	NA	NA	NA	NA	NA
	InSAR Reflector Installations	5/23/2013	NA	NA	NA	NA	NA	NA	NA	NA
	Subsidence Survey-Fenstermaker	5/23/2013	NA	NA	NA	NA	NA	NA	NA	NA
	Shallow Geophone Installation	5/23/2013	NA	NA	NA	NA	NA	NA	NA	NA
	Deep Geophone Installation	5/23/2013	NA	NA	NA	NA	NA	NA	NA	NA
	Amendment #3, Directive #2	5/23/2013	NA	NA	NA	NA	NA	NA	NA	NA
	Expansion of geoprobe gas sampling locations	5/23/2013	NA	NA	NA	NA	NA	NA	NA	NA
Miller	Weekly Stability Survey	No Work Performed		May 23, 2013		NA	NA	NA	NA	NA
	Misc. Survey Work	No Work Performed		May 23, 2013		NA	NA	NA	NA	NA
	Sinkhole Hydro/Perimeter Survey	No Work Performed		May 23, 2013		NA	NA	NA	NA	NA
Pisani	Surface Water	NA		NA		NA	NA	NA	NA	NA
	Industrial Well Water	NA		NA		NA	NA	NA	NA	NA
	MRAAWell Water	NA		NA		NA	NA	NA	NA	NA
	Geoprobe Wells	NA		NA		NA	NA	NA	NA	NA
		Grand Bayou Well 3A								
Daily Operations at 3A		Summary of Today's events								
		Oxy 3A								
5/24/2013		7am	517.03	5/24/2013						
5/24/2013		Relief Well #1								
		See ORW-01 Flare Spreadsheet								

Attachments

Daily Action Summary

May 23, 2013

Stationary Air Monitoring

- Eric Rucinski onsite from 07:45 – 09:00. Changed out the monitors between 08:14 and 08:42. Collected data from the monitoring database and forwarded to Jonathan Brockhaus in the Baton Rouge office for processing.
- Pete Hyatt IV of Code Red (monitor sub-contractor) onsite from 07:00 to 17:00. Assisted in battery change outs and maintenance of the monitoring equipment.

Residential Air Monitoring

- Sage has been requested to suspend bimonthly residential air monitoring. Therefore, Sage will discontinue these activities. The last event was conducted on March 26, 2013.

Gas Seep Sampling

- As part of the Comprehensive MRAA Sampling Program, the following gas seep sample was collected by Steve Shaughnessy:
 - NSDBS-6 at 16:55
 - NSDBS-14 at 16:35
 - NSDBS-15 at 16:02
 - NSDBS-23 at 16:17
 - NSDBS-26 at 08:40
 - NSDBS-64 at 08:16

Samples collected before 15:15 were transported by the Accutest courier service to the Accutest service center. Samples will be transported to the SPL Louisiana laboratory for sulfur analysis. Samples will also be shipped to Isotech Laboratories in Illinois for isotopic analysis. Samples collected after 15:15 will be transported on May 24, 2013.

Well Gas Sampling

- As part of the Comprehensive MRAA Sampling Program, the following well gas samples were collected by Steve Shaughnessy:
 - ORW-1 at 10:33
 - ORW-5 at 13:26
 - ORW-6 at 10:43
 - ORW-8 at 13:15

- ORW-9 at 11:13
- ORW-12 at 14:08
- ORW-13 at 13:50
- ORW-14 at 13:58
- ORW-15 at 10:20
- ORW-16 at 11:30
- ORW-17 at 10:53
- ORW-19 at 11:01
- ORW-22 at 10:10
- ORW-28 at 10:05

Samples collected before 15:15 were transported by the Accutest courier service to the Accutest service center. Samples will be transported to the SPL Louisiana laboratory for sulfur analysis. Samples will also be shipped to Isotech Laboratories in Illinois for isotopic analysis. Samples collected after 15:15 will be transported on May 24, 2013.

Under Slab Gas Sampling

- Not Scheduled

Air Indoor Monitoring

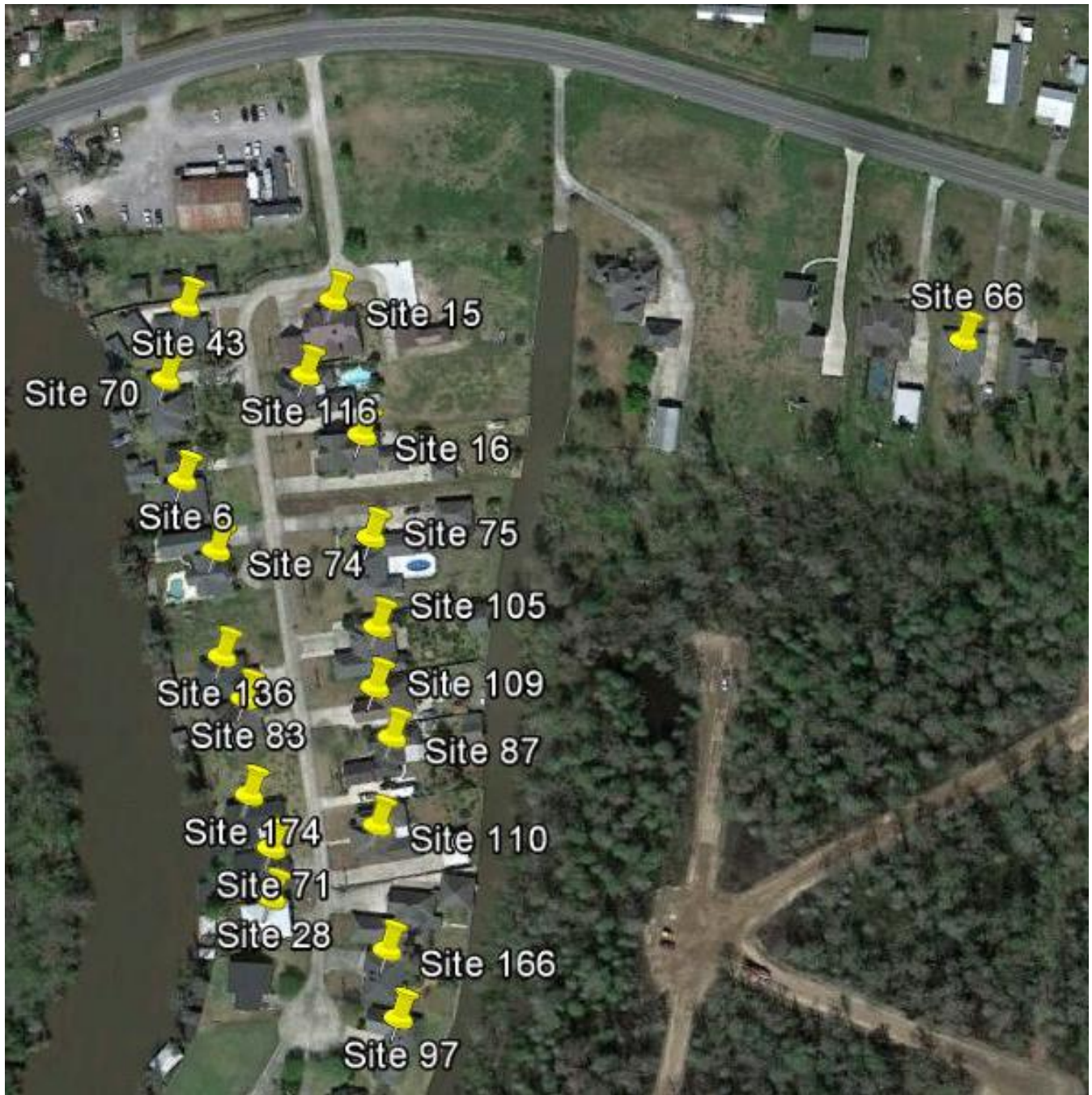
- Jill Martin and Eric Rucinski performed the in-home LEL and H₂S monitoring between 09:37 and 09:51 for Site 150. Data collected from the monitoring was forwarded to Jill Martin in the Baton Rouge office for processing.

Texas Brine - Belle Rose, Louisiana
Hourly Air Monitoring Data

*Time indicates start of time period (ex. 12:00:00 AM gives the time period 12:00:00 AM to 12:59:59 AM)

Date-Time *	South-most Pipeline Site					Middle-most Pipeline Site					North-most Pipeline Site					On Drill Rig Boom					Onsite Trailers				
	ST-3					ST-2					ST-1					OG 3A-1					TR-1				
	CO (ppm)	Non-Methane VOC (ppm)	H2S (ppm)	LEL (%)	O2 (%)	CO (ppm)	Non-Methane VOC (ppm)	H2S (ppm)	LEL (%)	O2 (%)	CO (ppm)	Non-Methane VOC (ppm)	H2S (ppm)	LEL (%)	O2 (%)	SO2 (ppm)	Non-Methane VOC (ppm)	H2S (ppm)	LEL (%)	O2 (%)	CO (ppm)	Non-Methane VOC (ppm)	H2S (ppm)	LEL (%)	O2 (%)
05/23/2013 01:00:00 AM	0.0	0.0	0.0	0.0	20.9	<1.0	<1.0	0.0	0.0	20.9	0.0	<1.0	<1.0	0.0	20.9	0.0	14.9	0.0	0.0	20.9	0.0	0.0	<1.0	0.0	20.9
05/23/2013 02:00:00 AM	0.0	0.0	0.0	0.0	20.9	0.0	<1.0	0.0	0.0	20.9	0.0	<1.0	<1.0	0.0	20.9	0.0	14.8	0.0	0.0	20.9	0.0	0.0	<1.0	0.0	20.9
05/23/2013 03:00:00 AM	0.0	0.0	0.0	0.0	20.9	<1.0	<1.0	<1.0	0.0	20.9	0.0	<1.0	<1.0	0.0	20.9	0.0	18.0	0.0	0.0	20.9	0.0	0.0	<1.0	0.0	20.9
05/23/2013 04:00:00 AM	0.0	0.0	0.0	0.0	20.9	<1.0	<1.0	<1.0	0.0	20.9	0.0	<1.0	<1.0	0.0	20.9	<1.0	18.6	0.0	0.0	20.9	0.0	0.0	<1.0	0.0	20.9
05/23/2013 05:00:00 AM	0.0	0.0	0.0	0.0	20.9	<1.0	<1.0	<1.0	0.0	20.9	0.0	<1.0	<1.0	0.0	20.9	<1.0	25.3	0.0	0.0	20.9	0.0	0.0	<1.0	0.0	20.9
05/23/2013 06:00:00 AM	0.0	0.0	0.0	0.0	20.9	<1.0	<1.0	<1.0	0.0	20.9	0.0	<1.0	<1.0	0.0	20.9	<1.0	28.5	0.0	0.0	20.9	0.0	0.0	<1.0	0.0	20.9
05/23/2013 07:00:00 AM	0.0	0.0	0.0	0.0	20.9	<1.0	<1.0	<1.0	0.0	20.9	0.0	<1.0	<1.0	0.0	20.9	0.0	21.5	0.0	0.0	20.9	0.0	0.0	<1.0	0.0	20.9
05/23/2013 08:00:00 AM	<1.0	0.0	<1.0	0.0	20.9	<1.0	<1.0	<1.0	0.0	20.9	<1.0	<1.0	<1.0	0.0	20.9	0.0	1.6	<1.0	0.0	20.9	<1.0	<1.0	<1.0	0.0	20.9
05/23/2013 09:00:00 AM	<1.0	0.0	<1.0	0.0	20.9	0.0	0.0	0.0	0.0	20.9	<1.0	0.0	<1.0	0.0	20.9	0.0	0.0	<1.0	0.0	20.9	<1.0	<1.0	<1.0	0.0	20.9
05/23/2013 10:00:00 AM	<1.0	0.0	<1.0	0.0	20.9	0.0	0.0	<1.0	0.0	20.9	0.0	0.0	<1.0	0.0	20.9	0.0	0.0	<1.0	0.0	20.9	<1.0	<1.0	<1.0	0.0	20.9
05/23/2013 11:00:00 AM	<1.0	0.0	<1.0	0.0	20.9	0.0	<1.0	<1.0	0.0	20.9	0.0	0.0	<1.0	0.0	20.9	<1.0	0.0	<1.0	0.0	20.9	<1.0	<1.0	<1.0	0.0	21.1
05/23/2013 12:00:00 PM	<1.0	0.0	<1.0	0.0	20.9	0.0	0.0	<1.0	0.0	20.9	0.0	0.0	<1.0	0.0	20.9	<1.0	0.0	<1.0	0.0	20.9	<1.0	<1.0	<1.0	0.0	21.3
05/23/2013 01:00:00 PM	<1.0	0.0	<1.0	0.0	20.9	0.0	0.0	<1.0	0.0	20.9	0.0	0.0	<1.0	0.0	20.9	<1.0	0.0	<1.0	0.0	20.9	<1.0	<1.0	<1.0	0.0	21.4
05/23/2013 02:00:00 PM	<1.0	0.0	<1.0	0.0	20.9	0.0	0.0	<1.0	0.0	20.9	0.0	0.0	<1.0	0.0	20.9	<1.0	0.0	<1.0	0.0	20.9	<1.0	<1.0	<1.0	0.0	21.4
05/23/2013 03:00:00 PM	<1.0	0.0	<1.0	0.0	20.9	0.0	0.0	<1.0	0.0	20.9	0.0	0.0	<1.0	0.0	20.9	<1.0	0.0	<1.0	0.0	20.9	<1.0	<1.0	<1.0	0.0	21.4
05/23/2013 04:00:00 PM	<1.0	0.0	<1.0	0.0	20.9	0.0	0.0	<1.0	0.0	20.9	0.0	0.0	<1.0	0.0	20.9	0.0	0.0	<1.0	0.0	20.9	<1.0	<1.0	<1.0	0.0	21.4
05/23/2013 05:00:00 PM	<1.0	0.0	<1.0	0.0	20.9	0.0	0.0	<1.0	0.0	20.9	0.0	0.0	<1.0	0.0	20.9	0.0	0.0	<1.0	0.0	20.9	<1.0	<1.0	<1.0	0.0	21.3
05/23/2013 06:00:00 PM	<1.0	0.0	<1.0	0.0	20.9	0.0	0.0	0.0	0.0	20.9	0.0	0.0	<1.0	0.0	20.9	0.0	0.0	<1.0	0.0	20.9	<1.0	<1.0	<1.0	0.0	21.3
05/23/2013 07:00:00 PM	<1.0	0.0	<1.0	0.0	20.9	0.0	<1.0	0.0	0.0	20.9	0.0	0.0	<1.0	0.0	20.9	0.0	0.0	0.0	0.0	20.9	<1.0	<1.0	<1.0	0.0	21.4
05/23/2013 08:00:00 PM	<1.0	0.0	0.0	0.0	20.9	0.0	0.0	0.0	0.0	20.9	0.0	0.0	0.0	0.0	20.9	0.0	0.0	0.0	0.0	20.9	<1.0	<1.0	<1.0	0.0	21.3
05/23/2013 09:00:00 PM	<1.0	0.0	0.0	0.0	20.9	0.0	0.0	0.0	0.0	20.9	0.0	0.0	0.0	0.0	20.9	0.0	0.0	0.0	0.0	20.9	<1.0	<1.0	<1.0	0.0	21.2
05/23/2013 10:00:00 PM	<1.0	0.0	0.0	0.0	20.9	0.0	0.0	0.0	0.0	20.9	0.0	0.0	0.0	0.0	20.9	0.0	0.0	0.0	0.0	20.9	<1.0	<1.0	<1.0	0.0	21.1
05/23/2013 11:00:00 PM	<1.0	0.0	0.0	0.0	20.9	0.0	<1.0	0.0	0.0	20.9	0.0	0.0	0.0	0.0	20.9	0.0	0.0	0.0	0.0	20.9	<1.0	<1.0	<1.0	0.0	21.1
05/24/2013 12:00:00 AM	<1.0	0.0	0.0	0.0	20.9	0.0	0.0	0.0	0.0	20.9	0.0	0.0	0.0	0.0	20.9	0.0	0.0	0.0	0.0	20.9	<1.0	<1.0	<1.0	0.0	21.1

Notes:
RTU-8, located at OG3A-1, recorded elevated VOC readings from approximately 9:21 PM on 5/22/2013 until RTU-8 was removed at 8:14 AM on 5/23/2013. RTU-13 replaced RTU-8 and began recording normal VOC readings. RTU-8 will be inspected by onsite technician before being redeployed.



Indoor Monitoring Locations

Through 05/23/2013

Sportsman Drive and Highway 70 Locations





**Indoor Monitoring Locations
Through 05/23/2013
Crawfish Stew Street Locations**





Indoor Monitoring Locations

Through 05/23/2013

Sauce Piquante Lane and Jambalaya Street Locations



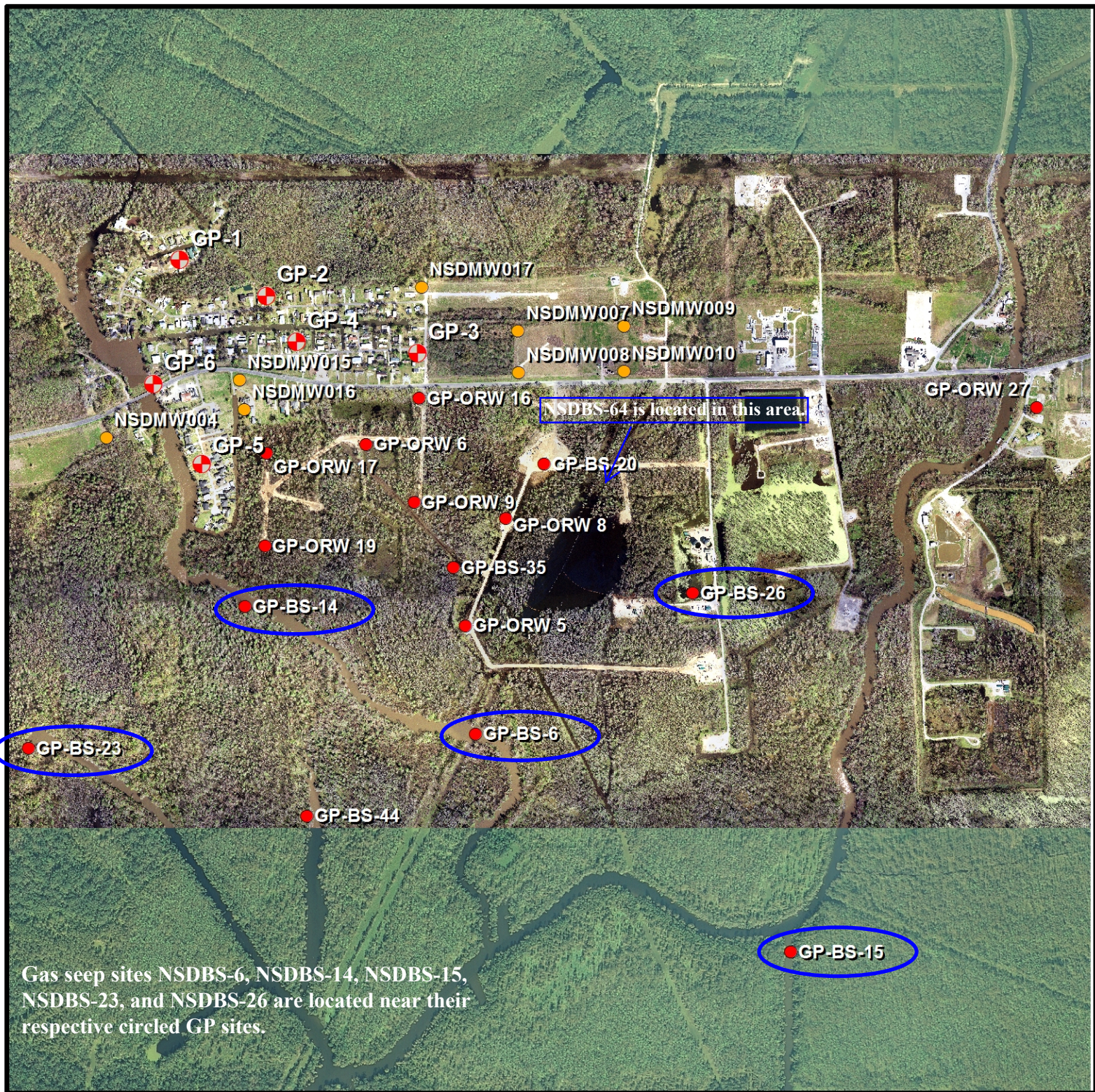


**Indoor Monitoring Locations
Through 05/23/2013
Grand Bayou Street Locations**



Indoor Residential Monitoring - Site 150
Bayou Corne, LA
May 23, 2013

Index	Rooms Monitored	Number of Readings Taken In Reach Area/Room	LEL Reading Results (%)	H ₂ S Reading Results (ppm)
1	Guest Bedroom	1	No Detectable Readings	No Detectable Readings
2	Closet in Guest Bedroom	3	No Detectable Readings	No Detectable Readings
3	Closet in Master Bedroom	3	No Detectable Readings	No Detectable Readings
4	Master Bathroom	3	No Detectable Readings	No Detectable Readings
5	Hall Bathroom/Laundry Room	5	No Detectable Readings	No Detectable Readings
6	Water Heater Closet in Hall Bathroom/Laundry Room	1	No Detectable Readings	No Detectable Readings
7	Living Room	2	No Detectable Readings	No Detectable Readings
8	Kitchen	4	No Detectable Readings	No Detectable Readings
9	Sunroom	2	No Detectable Readings	No Detectable Readings
10	Sunroom Bathroom	4	No Detectable Readings	No Detectable Readings
11	Closet in Sunroom Bathroom	1	No Detectable Readings	No Detectable Readings



Legend

- ⊕ Existing Geoprobe Wells
- DNR NSDMW Series
- New Geoprobes

0 500 1,000 1,500 Feet



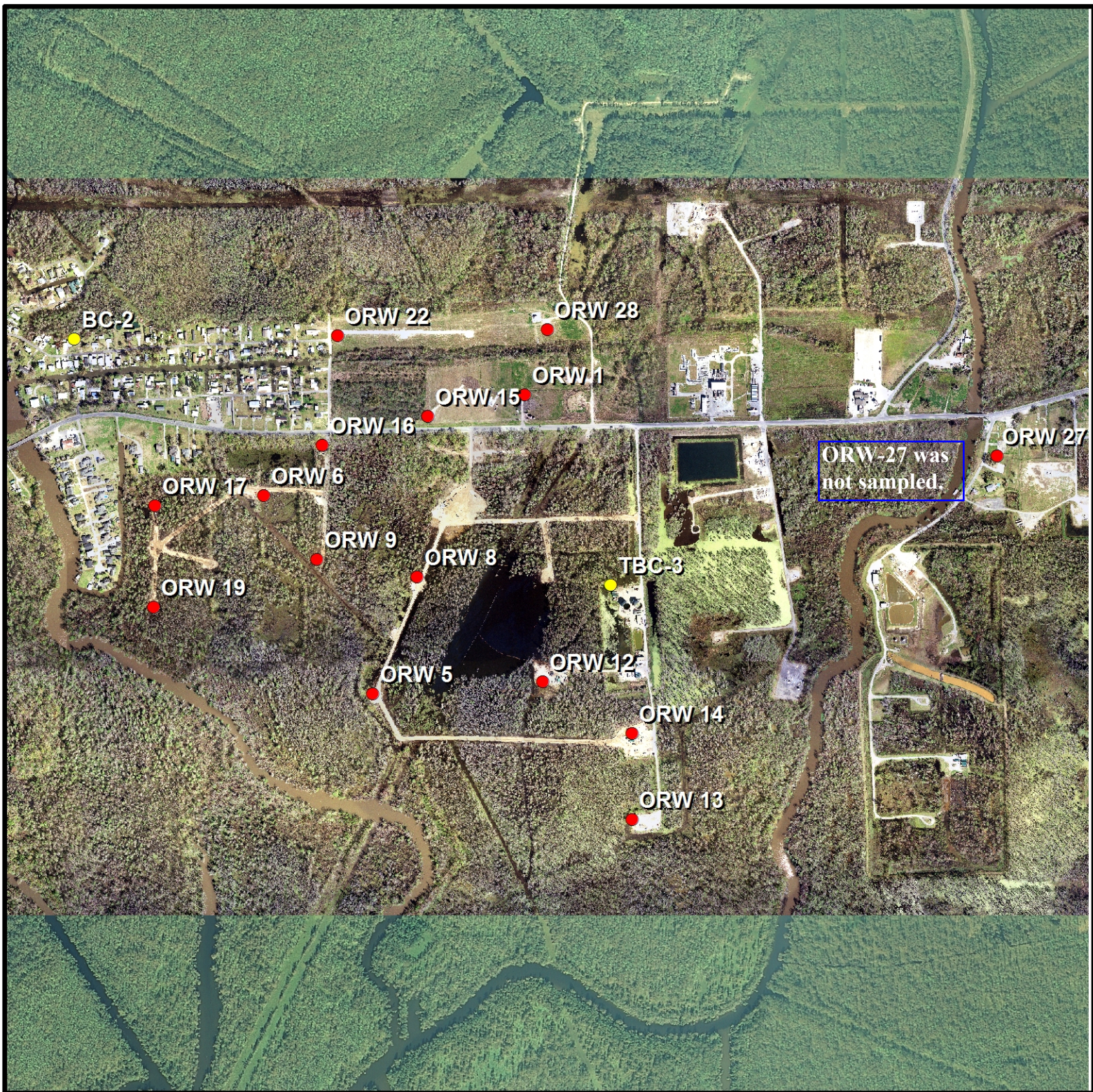
Geoprobe Locations

Texas Brine Facility
Bayou Corne, Louisiana

NAD 27 Louisiana South

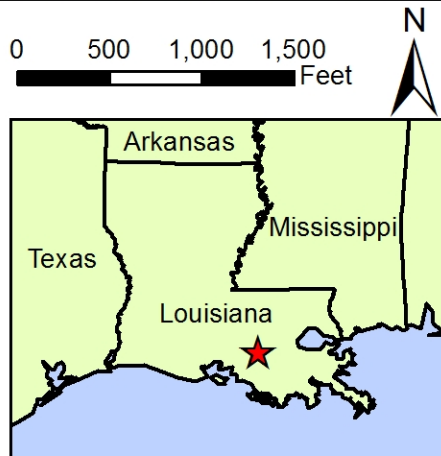
DRAWN BY	C.M. Hocking
DATE	15 - May - 2013
FILENAME	MRAA_Gas.mxd





Legend

- Pressure Monitoring Wells
- ORW Series



0 500 1,000 1,500
Feet



MRAA Gas Sampling Wells

Texas Brine Facility
Bayou Corne, Louisiana

NAD 27 Louisiana South

DRAWN BY C.M. Hocking

DATE 17 - May - 2013

FILENAME MRAA_Gas.mxd



Texas Brine - Belle Rose, Louisiana
Hourly Air Monitoring Data

*Time indicates start of time period (ex. 12:00:00 AM gives the time period 12:00:00 AM to 12:59:59 AM)

Date-Time *	South-most Pipeline Site					Middle-most Pipeline Site					North-most Pipeline Site					On Drill Rig Boom					Onsite Trailers				
	ST-3					ST-2					ST-1					OG 3A-1					TR-1				
	CO (ppm)	Non-Methane VOC (ppm)	H2S (ppm)	LEL (%)	O2 (%)	CO (ppm)	Non-Methane VOC (ppm)	H2S (ppm)	LEL (%)	O2 (%)	CO (ppm)	Non-Methane VOC (ppm)	H2S (ppm)	LEL (%)	O2 (%)	SO2 (ppm)	Non-Methane VOC (ppm)	H2S (ppm)	LEL (%)	O2 (%)	CO (ppm)	Non-Methane VOC (ppm)	H2S (ppm)	LEL (%)	O2 (%)
05/23/2013 05:00:00 AM	0.0	0.0	0.0	0.0	20.9	<1.0	<1.0	<1.0	0.0	20.9	0.0	<1.0	<1.0	0.0	20.9	<1.0	25.3	0.0	0.0	20.9	0.0	0.0	<1.0	0.0	20.9
05/23/2013 06:00:00 AM	0.0	0.0	0.0	0.0	20.9	<1.0	<1.0	<1.0	0.0	20.9	0.0	<1.0	<1.0	0.0	20.9	<1.0	28.5	0.0	0.0	20.9	0.0	0.0	<1.0	0.0	20.9
05/23/2013 07:00:00 AM	0.0	0.0	0.0	0.0	20.9	<1.0	<1.0	<1.0	0.0	20.9	0.0	<1.0	<1.0	0.0	20.9	0.0	21.5	0.0	0.0	20.9	0.0	0.0	<1.0	0.0	20.9
05/23/2013 08:00:00 AM	<1.0	0.0	<1.0	0.0	20.9	<1.0	<1.0	<1.0	0.0	20.9	<1.0	<1.0	<1.0	0.0	20.9	0.0	1.6	<1.0	0.0	20.9	<1.0	<1.0	<1.0	0.0	20.9
05/23/2013 09:00:00 AM	<1.0	0.0	<1.0	0.0	20.9	0.0	0.0	0.0	0.0	20.9	<1.0	0.0	<1.0	0.0	20.9	0.0	0.0	<1.0	0.0	20.9	<1.0	<1.0	<1.0	0.0	20.9
05/23/2013 10:00:00 AM	<1.0	0.0	<1.0	0.0	20.9	0.0	0.0	<1.0	0.0	20.9	0.0	0.0	<1.0	0.0	20.9	0.0	0.0	<1.0	0.0	20.9	<1.0	<1.0	<1.0	0.0	20.9
05/23/2013 11:00:00 AM	<1.0	0.0	<1.0	0.0	20.9	0.0	<1.0	<1.0	0.0	20.9	0.0	0.0	<1.0	0.0	20.9	<1.0	0.0	<1.0	0.0	20.9	<1.0	<1.0	<1.0	0.0	21.1
05/23/2013 12:00:00 PM	<1.0	0.0	<1.0	0.0	20.9	0.0	0.0	<1.0	0.0	20.9	0.0	0.0	<1.0	0.0	20.9	<1.0	0.0	<1.0	0.0	20.9	<1.0	<1.0	<1.0	0.0	21.3
05/23/2013 01:00:00 PM	<1.0	0.0	<1.0	0.0	20.9	0.0	0.0	<1.0	0.0	20.9	0.0	0.0	<1.0	0.0	20.9	<1.0	0.0	<1.0	0.0	20.9	<1.0	<1.0	<1.0	0.0	21.4
05/23/2013 02:00:00 PM	<1.0	0.0	<1.0	0.0	20.9	0.0	0.0	<1.0	0.0	20.9	0.0	0.0	<1.0	0.0	20.9	<1.0	0.0	<1.0	0.0	20.9	<1.0	<1.0	<1.0	0.0	21.4
05/23/2013 03:00:00 PM	<1.0	0.0	<1.0	0.0	20.9	0.0	0.0	<1.0	0.0	20.9	0.0	0.0	<1.0	0.0	20.9	<1.0	0.0	<1.0	0.0	20.9	<1.0	<1.0	<1.0	0.0	21.4
05/23/2013 04:00:00 PM	<1.0	0.0	<1.0	0.0	20.9	0.0	0.0	<1.0	0.0	20.9	0.0	0.0	<1.0	0.0	20.9	0.0	0.0	<1.0	0.0	20.9	<1.0	<1.0	<1.0	0.0	21.4
05/23/2013 05:00:00 PM	<1.0	0.0	<1.0	0.0	20.9	0.0	0.0	<1.0	0.0	20.9	0.0	0.0	<1.0	0.0	20.9	0.0	0.0	<1.0	0.0	20.9	<1.0	<1.0	<1.0	0.0	21.3
05/23/2013 06:00:00 PM	<1.0	0.0	<1.0	0.0	20.9	0.0	0.0	0.0	0.0	20.9	0.0	0.0	<1.0	0.0	20.9	0.0	0.0	<1.0	0.0	20.9	<1.0	<1.0	<1.0	0.0	21.3
05/23/2013 07:00:00 PM	<1.0	0.0	<1.0	0.0	20.9	0.0	<1.0	0.0	0.0	20.9	0.0	0.0	<1.0	0.0	20.9	0.0	0.0	0.0	0.0	20.9	<1.0	<1.0	<1.0	0.0	21.4
05/23/2013 08:00:00 PM	<1.0	0.0	0.0	0.0	20.9	0.0	0.0	0.0	0.0	20.9	0.0	0.0	0.0	0.0	20.9	0.0	0.0	0.0	0.0	20.9	<1.0	<1.0	<1.0	0.0	21.3
05/23/2013 09:00:00 PM	<1.0	0.0	0.0	0.0	20.9	0.0	0.0	0.0	0.0	20.9	0.0	0.0	0.0	0.0	20.9	0.0	0.0	0.0	0.0	20.9	<1.0	<1.0	<1.0	0.0	21.2
05/23/2013 10:00:00 PM	<1.0	0.0	0.0	0.0	20.9	0.0	0.0	0.0	0.0	20.9	0.0	0.0	0.0	0.0	20.9	0.0	0.0	0.0	0.0	20.9	<1.0	<1.0	<1.0	0.0	21.1
05/23/2013 11:00:00 PM	<1.0	0.0	0.0	0.0	20.9	0.0	<1.0	0.0	0.0	20.9	0.0	0.0	0.0	0.0	20.9	0.0	0.0	0.0	0.0	20.9	<1.0	<1.0	<1.0	0.0	21.1
05/24/2013 12:00:00 AM	<1.0	0.0	0.0	0.0	20.9	0.0	0.0	0.0	0.0	20.9	0.0	0.0	0.0	0.0	20.9	0.0	0.0	0.0	0.0	20.9	<1.0	<1.0	<1.0	0.0	21.1
05/24/2013 01:00:00 AM	<1.0	0.0	0.0	0.0	20.9	0.0	0.0	0.0	0.0	20.9	0.0	0.0	0.0	0.0	20.9	0.0	<1.0	0.0	0.0	20.9	<1.0	<1.0	<1.0	0.0	21.1
05/24/2013 02:00:00 AM	<1.0	0.0	0.0	0.0	20.9	0.0	0.0	0.0	0.0	20.9	0.0	0.0	0.0	0.0	20.9	0.0	<1.0	0.0	0.0	20.9	<1.0	<1.0	<1.0	0.0	21.1
05/24/2013 03:00:00 AM	<1.0	0.0	0.0	0.0	20.9	0.0	0.0	0.0	0.0	20.9	0.0	0.0	0.0	0.0	20.9	0.0	<1.0	0.0	0.0	20.9	<1.0	<1.0	<1.0	0.0	21.0
05/24/2013 04:00:00 AM	<1.0	0.0	0.0	0.0	20.9	0.0	0.0	0.0	0.0	20.9	0.0	0.0	0.0	0.0	20.9	0.0	<1.0	0.0	0.0	20.9	<1.0	<1.0	<1.0	0.0	20.9
05/24/2013 05:00:00 AM	<1.0	0.0	0.0	0.0	20.9	0.0	<1.0	0.0	0.0	20.9	0.0	0.0	0.0	0.0	20.9	0.0	<1.0	0.0	0.0	20.9	<1.0	<1.0	<1.0	0.0	20.9

Notes:
RTU-8, located at OG3A-1, recorded elevated VOC readings from approximately 9:21 PM on 5/22/2013 until RTU-8 was removed at 8:14 AM on 5/23/2013. RTU-13 replaced RTU-8 and began recording normal VOC readings. RTU-8 will be inspected by onsite technician before being redeployed.

ME&A Daily Action Summary

May 23, 2013

Subsidence Survey:

- No Work Done

Sinkhole Perimeter/Hydrographic Survey:

- No Work Done

Support Sinkhole Cleanup

- No Work Done

Misc. Survey Work

- No Work Done