

G:\11226\NORTH FLATS\ALTERNATE ISLAND DESIGN.dwg [NORTH PLAN] Jun 15, 2016 - 11:35am by gerald



REV.	DATE	REVISIONS	BY

FALSE RIVER ECOSYSTEM RESTORATION
 PHASE II - NORTH FLATS
 POINTE COUPEE PARISH
 POLICE JURY

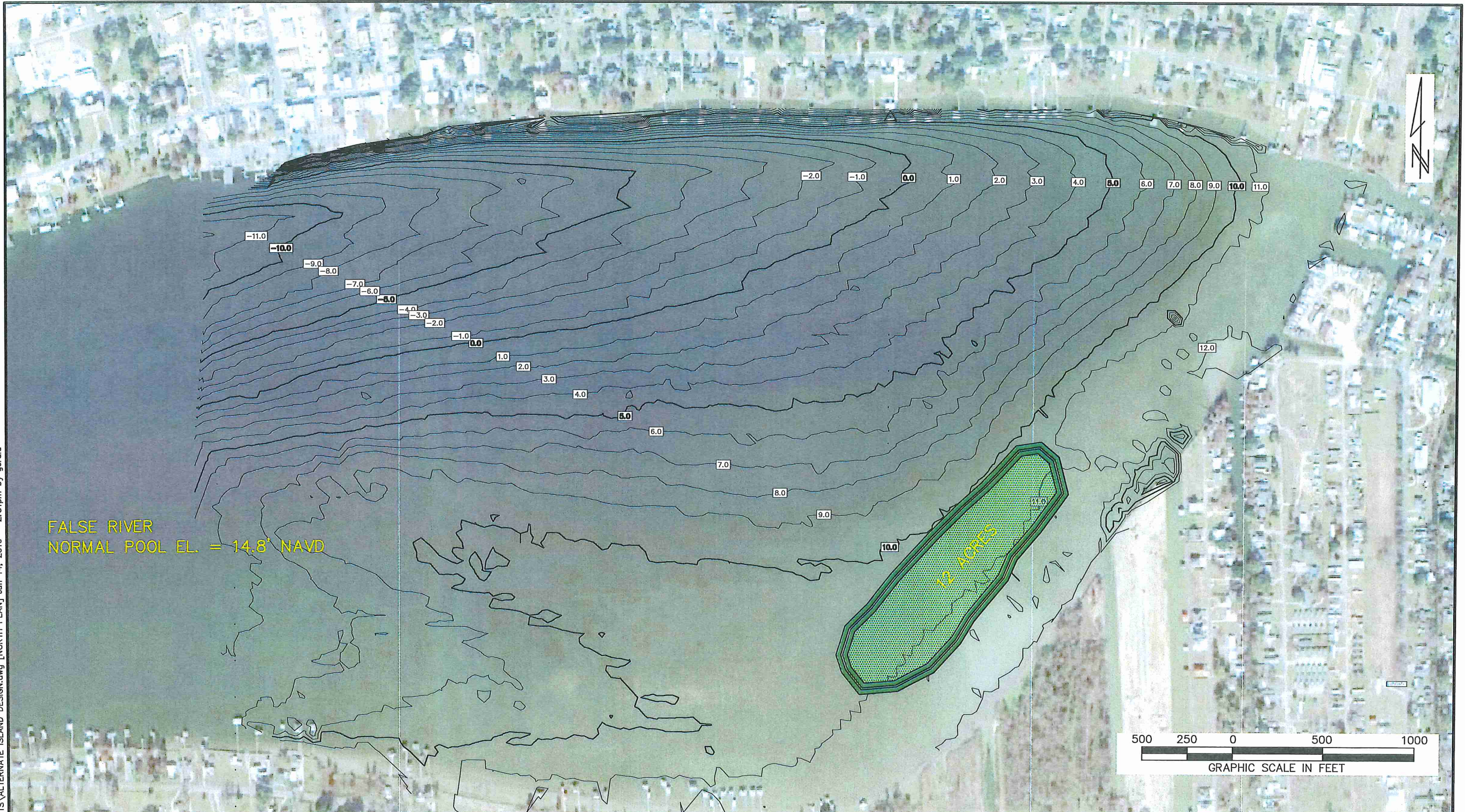
PEC PROJ. NO.: 11226
 DATE: JUNE 2016
 DESIGNED: G. BABIN
 DRAWN: G. BABIN
 CHECKED:
 APPROVED:

SEDIMENT DISPOSAL SITES STUDIED

PEC PROFESSIONAL ENGINEERING
 CONSULTANTS CORPORATION
 7600 Innovation Park Dr. | Baton Rouge, LA 70820 | 225.769.2810

SHEET NO.:

G:\11226\NORTH FLATS\ALTERNATE ISLAND DESIGN.dwg [NORTH PLAN] Jun 14, 2016 - 2:31pm by gerald



FALSE RIVER
NORMAL POOL EL. = 14.8' NAVD




REV.	DATE	REVISIONS	BY

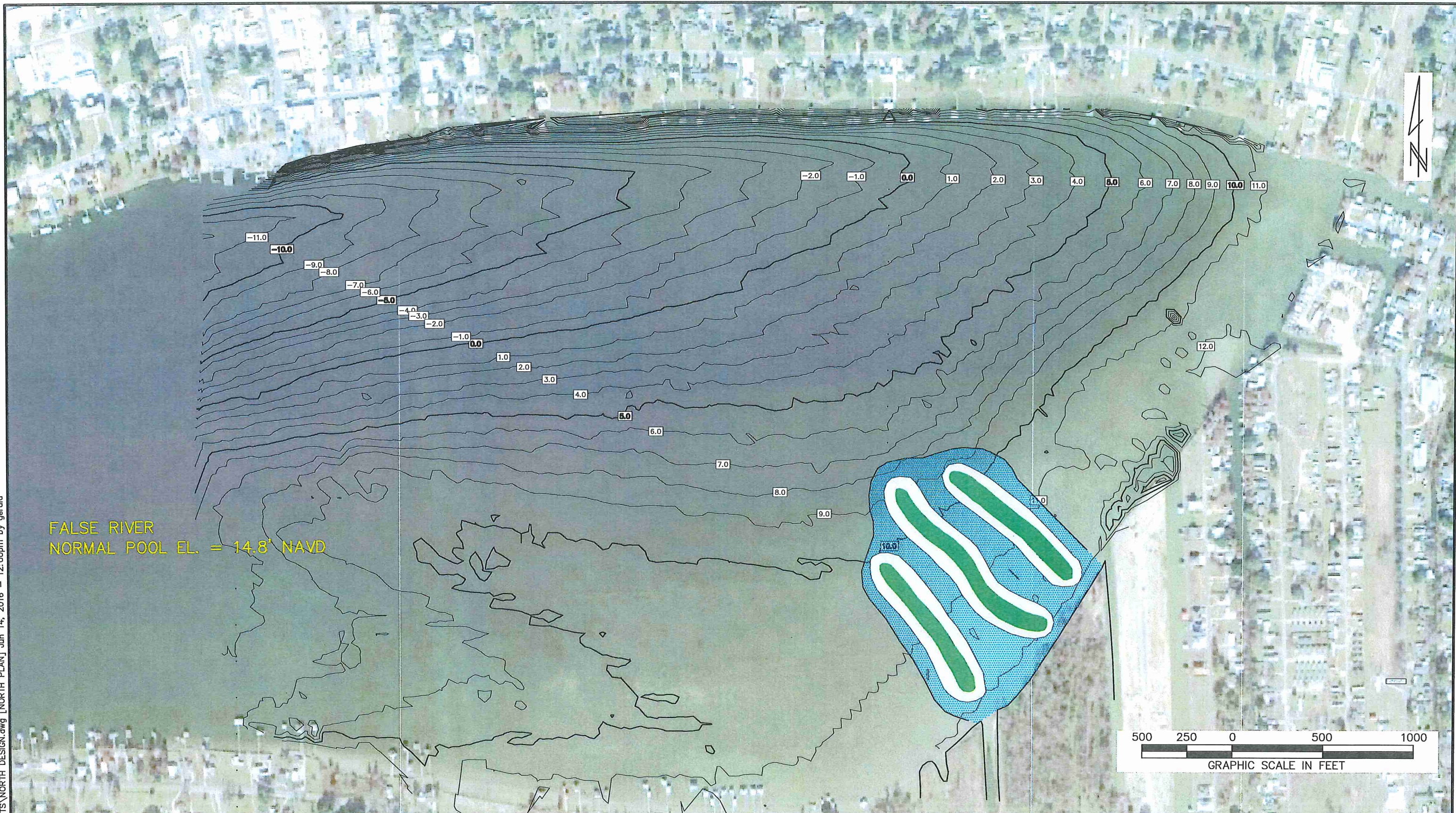
FALSE RIVER ECOSYSTEM RESTORATION
PHASE II - NORTH FLATS

POINTE COUPEE PARISH
POLICE JURY

PEC PROJ. NO.: 11226
DATE: JUNE 2016
DESIGNED: G. BABIN
DRAWN: G. BABIN
CHECKED:
APPROVED:

NORTH ISLAND LAYOUT		SHEET NO.: 1
 PEC PROFESSIONAL ENGINEERING CONSULTANTS CORPORATION 7600 Innovation Park Dr. Baton Rouge, LA 70820 225.769.2810		

G:\11226\NORTH FLATS\NORTH DESIGN.dwg [NORTH PLAN] Jun 14, 2016 - 12:00pm by gerald



FALSE RIVER
NORMAL POOL EL. = 14.8' NAVD

REV.	DATE	REVISIONS	BY


FALSE RIVER ECOSYSTEM RESTORATION
PHASE II - NORTH FLATS

 POINTE COUPEE PARISH
POLICE JURY

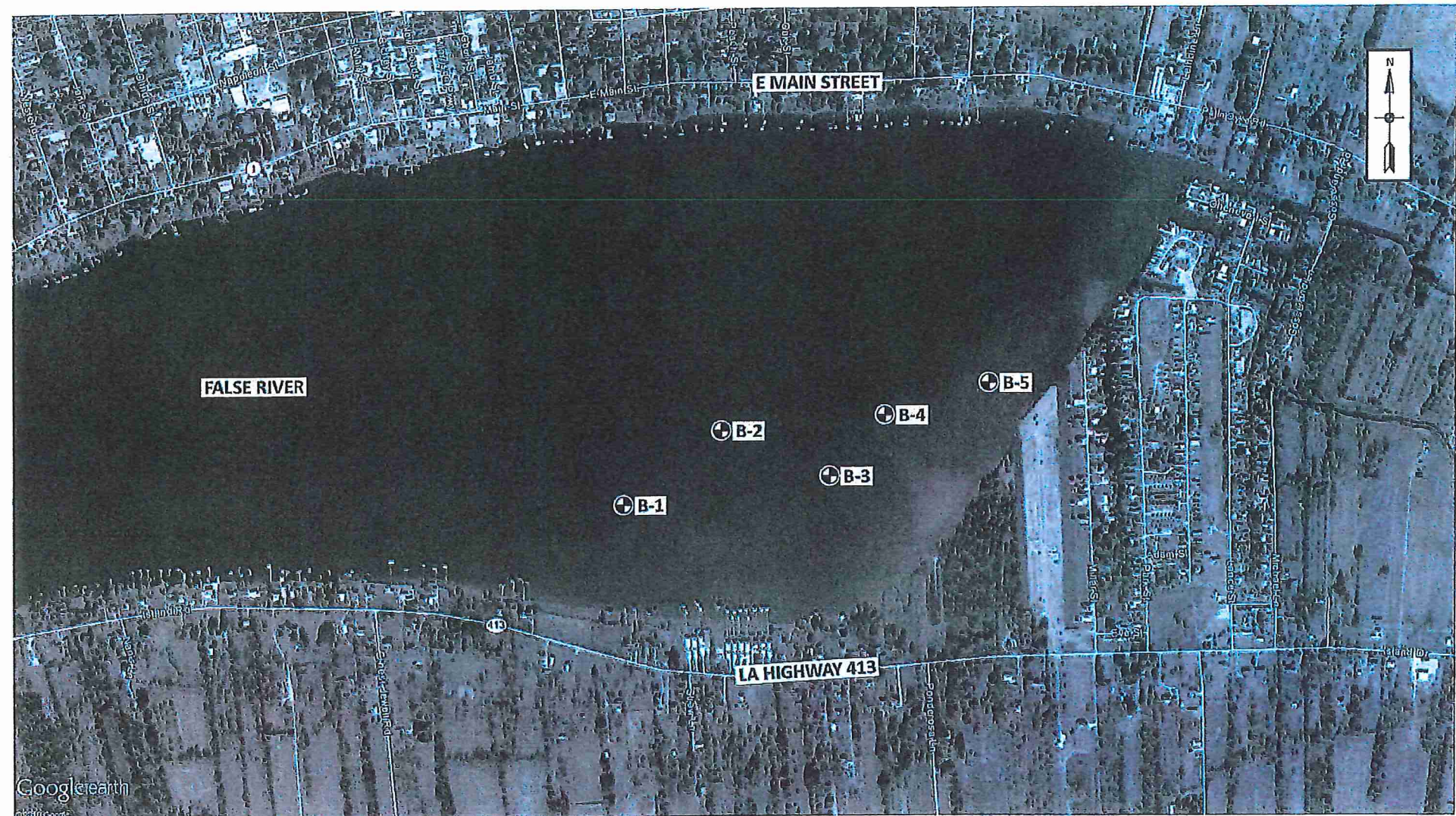
PEC PROJ. NO.: 11226
 DATE: JUNE 2016
 DESIGNED: G. BABIN
 DRAWN: G. BABIN
 CHECKED:
 APPROVED:

LAYOUT FROM 2012 STUDY

SHEET NO.: 2



PEC PROFESSIONAL ENGINEERING
CONSULTANTS CORPORATION
 7600 Innovation Park Dr. | Baton Rouge, LA 70820 | 225.769.2810



NOT TO SCALE

⊕ DENOTES LOCATIONS OF UNDISTURBED SOIL BORINGS DRILLED 18 THROUGH 20 APRIL 2016

BORING LOCATION PLAN

POINTE COUPEE PARISH POLICE JURY
 FALSE RIVER AQUATIC RESOURCES
 ECOSYSTEM RESTORATION PROJECT
 PHASE II, NORTH FLATS
 POINTE COUPEE PARISH, LOUISIANA



DRAWN BY: J.L.S.	JOB NO.: 23163
CHECKED BY: P.A.T.	DATE: 4 MAY 2016
CADD FILE: LOCATION PLAN.DGN	FIGURE 2

B-1
20 APR 16
30°41'6.108" -91°25'44.832"

B-2
19 APR 16
30°41'11.688" -91°25'36.192"

B-3
18 APR 16
30°41'8.232" -91°25'26.652"

B-4
18 APR 16
30°41'12.84" -91°25'21.756"

B-5
19 APR 16
30°41'15.288" -91°25'12.54"



BORING MATERIAL GRAPHICS

- CLAY
- SILTY CLAY
- SAND
- SILTY SAND
- CLAYEY SILT

NOTE:

NUMBERS TO THE RIGHT OF THE BORING LOGS REPRESENT RESULTS OF STANDARD PENETRATION TESTS.

SUBSOIL PROFILE

POINTE COUPEE PARISH POLICE JURY
FALSE RIVER AQUATIC RESOURCES
ECOSYSTEMS RESTORATION PROJECT
PHASE II, NORTH FLATS
POINTE COUPEE PARISH, LOUISIANA

	DRAWN BY: J.L.S.	JOB NO.: 23163
	CHECKED BY: P.A.T.	DATE: 12 MAY 2016
CADD FILE: PROFILE.DGN	FIGURE 3	