

TRACT 43051 - East Baton Rouge and West Baton Rouge Parishes, Louisiana

All of the lands now or formerly constituting the beds and bottoms of all water bodies of every nature and description as to which title is vested in the State of Louisiana, together with all islands arising therein and other lands formed by accretion or by reliction, where allowed by law, excepting tax adjudicated lands, and not presently under mineral lease on February 13, 2013, situated in East Baton Rouge and West Baton Rouge Parishes, Louisiana, and more particularly described as follows: Beginning at a point having Coordinates of X = 2,025,491.55 and Y = 702,371.09; thence South 12,072.95 feet to a point having Coordinates of X = 2,025,491.55 and Y = 690,298.14; thence West approximately 2,254 feet to a point on the East boundary of State Lease No. 14674, as amended; thence Northeasterly and Westerly along the boundaries of said State Lease No. 14674 to its Northwest corner and the Southeast corner of State Lease No. 18804, as amended having Coordinates of X = 2,018,238.35 and Y = 692,457.17; thence along the boundaries of said State Lease No. 18804 the following courses: North 08 degrees 06 minutes 54 seconds East 5,306.64 feet to a point having Coordinates of X = 2,018,987.42 and Y = 697,710.68, West 5,306.64 feet to a point having Coordinates of X = 2,013,680.79 and Y = 697,710.68, South 08 degrees 06 minutes 54 seconds West 5,306.64 feet to a point having Coordinates of X = 2,012,931.71 and Y = 692,457.17 and East 5,306.64 feet to its said Southeast corner having Coordinates of X = 2,018,238.35 and Y = 692,457.17; thence Southwesterly along the boundary of said State Lease No. 14674 approximately 2,181 feet to a point having a Y = 690,298.14; thence West approximately 10,919 feet to a point having Coordinates of X = 2,007,011.55 and Y = 690,298.14; thence North 18,172.86 feet to a point on the South boundary of State Lease No. 20737 having Coordinates of X = 2,007,011.55 and Y = 708,471.00; thence along the boundary of said State Lease No. 20737 the following courses: East 5.321.45 feet to a point having Coordinates of X = 2,012,333.00 and Y = 708,471.00 and North 307.14 feet to a point on its East boundary having Coordinates of X = 2,012,333.00 and Y = 708,778.14; thence East 8,467.34 feet to a point having Coordinates of X = 2,020,800.34 and Y = 708,778.14; thence South 6,440.81 feet to a point having Coordinates of X = 2,020,800.34 and Y = 702,337.34; thence North 89 degrees 35 minutes 16 seconds East 4,691.34 feet to the point of beginning, (This tract includes only waterbottoms claimed and owned by the state and specifically excludes any land which the state may claim or own and to which the mineral rights are vested in the state), containing approximately **1,742 acres**, all as more particularly outlined on a plat on file in the Office of Mineral Resources, Department of Natural Resources. All bearings, distances and coordinates are based on Louisiana Coordinate System of 1927, (North or South Zone), where applicable.

NOTE: The above description of the Tract nominated for lease has been provided and corrected, where required, exclusively by the nomination party. Any mineral lease selected from this Tract and awarded by the Louisiana State Mineral and Energy Board shall be without warranty of any kind, either express, implied, or statutory, including, but not limited to, the implied warranties of merchantability and fitness for a particular

purpose. Should the mineral lease awarded by the Louisiana State Mineral and Energy Board be subsequently modified, cancelled or abrogated due to the existence of conflicting leases, operating agreements, private claims or other future obligations or conditions which may affect all or any portion of the leased Tract, it shall not relieve the Lessee of the obligation to pay any bonus due thereon to the Louisiana State Mineral and Energy Board, nor shall the Louisiana State Mineral and Energy Board be obligated to refund any consideration paid by the Lessor prior to such modification, cancellation, or abrogation, including, but not limited to, bonuses, rentals and royalties.

Applicant: BARKER ENERGY

Bidder	Cash Payment	Price/Acre	Rental	Oil	Gas	Other

Legend

- 13020002
- Active_Leases
- Counties

IMAGERY.DOQQ_2008_1M_CIR

EAST BATON ROUGE PARISH

WEST BATON ROUGE PARISH

MISSISSIPPI RIVER

P.O.B.

T5S - R1W

SL 14674

SL 18804

T6S - R11E

SL 20737

T5S - R11E



TRACT 43052 - Pointe Coupee Parish, Louisiana

All of the lands now or formerly constituting the beds and bottoms of all water bodies of every nature and description as to which title is vested in the State of Louisiana, together with all islands arising therein and other lands formed by accretion or by reliction, where allowed by law, excepting tax adjudicated lands, and not presently under mineral lease on February 13, 2013, situated in Pointe Coupee Parish, Louisiana, and more particularly described as follows: Beginning at a point having Coordinates of X = 1,884,267.00 and Y = 684,500.00; thence East 5,567.00 feet to a point having Coordinates of X = 1,889,834.00 and Y = 684,500.00; thence South 7,915.00 feet to a point having Coordinates of X = 1,889,834.00 and Y = 676,585.00; thence West 4,362.00 feet to a point having Coordinates of X = 1,885,472.00 and Y = 676,585.00; thence North 81 degrees 24 minutes 40 seconds West 1,218.67 feet to a point having Coordinates of X = 1,884,267.00 and Y = 676,767.00; thence North 7,733.00 feet to the point of beginning, **LESS AND EXCEPT** any portion of the Sherburne Wildlife Management Area that may lie within the above described tract, containing approximately **14 acres**, all as more particularly outlined on a plat on file in the Office of Mineral Resources, Department of Natural Resources. All bearings, distances and coordinates are based on Louisiana Coordinate System of 1927, (North or South Zone), where applicable.

NOTE: The above description of the Tract nominated for lease has been provided and corrected, where required, exclusively by the nomination party. Any mineral lease selected from this Tract and awarded by the Louisiana State Mineral and Energy Board shall be without warranty of any kind, either express, implied, or statutory, including, but not limited to, the implied warranties of merchantability and fitness for a particular purpose. Should the mineral lease awarded by the Louisiana State Mineral and Energy Board be subsequently modified, cancelled or abrogated due to the existence of conflicting leases, operating agreements, private claims or other future obligations or conditions which may affect all or any portion of the leased Tract, it shall not relieve the Lessee of the obligation to pay any bonus due thereon to the Louisiana State Mineral and Energy Board, nor shall the Louisiana State Mineral and Energy Board be obligated to refund any consideration paid by the Lessor prior to such modification, cancellation, or abrogation, including, but not limited to, bonuses, rentals and royalties.

NOTE: This acreage is entirely within the boundary of the Atchafalaya Basin Legal Area.

Applicant: PATRICK L. DONOHUE PETROLEUM PROPERTIES, INC.

Bidder	Cash Payment	Price/Acre	Rental	Oil	Gas	Other

13020049

Wildlife

IMAGERY.DOQQ_2008_1M_CIF

POINTE COUPEE PARISH

T6S - R8E

BAYOU CLOSE

P.O.B.

T6S - R7E

SHERBURNE WILDLIFE MANAGEMENT AREA

0 2,000 Feet

TRACT 43053 - Cameron Parish, Louisiana

All of the lands now or formerly constituting the beds and bottoms of all water bodies of every nature and description as to which title is vested in the State of Louisiana, together with all islands arising therein and other lands formed by accretion or by reliction, where allowed by law, excepting tax adjudicated lands, and not presently under mineral lease on February 13, 2013, situated in Cameron Parish, Louisiana, and more particularly described as follows: All water bodies claimed by the State of Louisiana lying within the confines of Section 16, Township 16 South, Range 3 West, containing approximately **67 acres**, all as more particularly outlined on a plat on file in the Office of Mineral Resources, Department of Natural Resources. All bearings, distances and coordinates are based on Louisiana Coordinate System of 1927, (North or South Zone), where applicable.

NOTE: The above description of the Tract nominated for lease has been provided and corrected, where required, exclusively by the nomination party. Any mineral lease selected from this Tract and awarded by the Louisiana State Mineral and Energy Board shall be without warranty of any kind, either express, implied, or statutory, including, but not limited to, the implied warranties of merchantability and fitness for a particular purpose. Should the mineral lease awarded by the Louisiana State Mineral and Energy Board be subsequently modified, cancelled or abrogated due to the existence of conflicting leases, operating agreements, private claims or other future obligations or conditions which may affect all or any portion of the leased Tract, it shall not relieve the Lessee of the obligation to pay any bonus due thereon to the Louisiana State Mineral and Energy Board, nor shall the Louisiana State Mineral and Energy Board be obligated to refund any consideration paid by the Lessor prior to such modification, cancellation, or abrogation, including, but not limited to, bonuses, rentals and royalties.

NOTE: The State of Louisiana does hereby reserve, and this lease shall be subject to, the imprescriptible right of surface use in the nature of a servitude in favor of the Department of Natural Resources, including its Offices and Commissions, for the sole purpose of implementing, constructing, servicing and maintaining approved coastal zone management and/or restoration projects. Utilization of any and all rights derived under this lease by the mineral lessee, its agents, successors or assigns, shall not interfere with nor hinder the reasonable surface use by the Department of Natural Resources, its Offices or Commissions, as herein above reserved.

Applicant: PATRICK L. DONOHUE PETROLEUM PROPERTIES, INC.

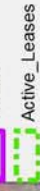
Bidder	Cash Payment	Price/Acre	Rental	Oil	Gas	Other

Legend

13020071



Wildlife



Active_Leases

IMAGERY.DOQQ_2008_1M_CIR

0 2,000 Feet



SEC 9

CAMERON PARISH

SL 2038

CONSTANCE BAYOU

SEC 15

ROCKEFELLER WILDLIFE REFUGE

SEC 16

SEC 17



TRACT 43054 - Terrebonne Parish, Louisiana

All of the lands now or formerly constituting the beds and bottoms of all water bodies of every nature and description as to which title is vested in the State of Louisiana, together with all islands arising therein and other lands formed by accretion or by reliction, where allowed by law, excepting tax adjudicated lands, and not presently under mineral lease on February 13, 2013, situated in Terrebonne Parish, Louisiana, and more particularly described as follows: Beginning at a point having Coordinates of X = 2,047,600.00 and Y = 254,130.00; thence West 17,800.00 feet to a point having Coordinates of X = 2,029,800.00 and Y = 254,130.00; thence North approximately 1,699 feet to a point of intersection with the Eastern boundary of the Atchafalaya Delta Wildlife Management Area having a Coordinate of X = 2,029,800.00; thence Northeasterly and Northerly approximately 7,311 feet along the meanders of said Atchafalaya Delta Wildlife Management Area to a point of intersection with the Southern boundary of State Lease No. 2077, as amended; thence along the boundary of said State Lease No. 2077 the following courses: South 49 degrees 20 minutes 18 seconds East 77.84 feet, South 55 degrees 10 minutes 32 seconds East 560.36 feet, North 13 degrees 55 minutes 48 seconds East 1,308.48 feet, South 49 degrees 58 minutes 11 seconds East 163.25 feet, South 45 degrees 58 minutes 16 seconds East 208.63 feet, South 58 degrees 14 minutes 26 seconds East 246.98 feet, South 67 degrees 22 minutes 48 seconds East 260.00 feet, South 75 degrees 57 minutes 50 seconds East 247.39 feet, North 88 degrees 36 minutes 10 seconds East 205.06 feet, South 82 degrees 44 minutes 49 seconds East 277.22 feet, South 82 degrees 03 minutes 24 seconds East 434.17 feet, North 88 degrees 38 minutes 10 seconds East 420.12 feet, North 87 degrees 16 minutes 25 seconds East 420.48 feet, North 77 degrees 15 minutes 17 seconds East 430.61 feet, North 70 degrees 55 minutes 51 seconds East 428.51 feet, North 66 degrees 20 minutes 13 seconds East 485.85 feet, North 56 degrees 39 minutes 33 seconds East 454.86 feet, North 46 degrees 04 minutes 51 seconds East 374.83 feet, North 35 degrees 20 minutes 53 seconds East 527.19 feet, North 28 degrees 01 minutes 29 seconds East 351.18 feet, North 17 degrees 58 minutes 09 seconds East 388.97 feet, North 12 degrees 59 minutes 42 seconds East 133.42 feet, North 06 degrees 00 minutes 32 seconds East 191.05 feet, North 01 degrees 06 minutes 06 seconds East 260.05 feet, North 08 degrees 01 minutes 02 seconds West 358.50 feet, and North 11 degrees 59 minutes 49 seconds East 332.26 feet to a point having a Coordinate of Y = 265,130.00; thence East 7,435.94 feet to a point having Coordinates of X = 2,047,600.00 and Y = 256,130.00; thence South 11,000.00 feet to the point of beginning, **LESS AND EXCEPT** that portion, if any, of State Lease No. 2077, that may lie within the above described tract and **LESS AND EXCEPT** that portion, if any, of the Atchafalaya Delta Wildlife Management Area, that may lie within the above described tract, containing approximately **2,278 acres**, all as more particularly outlined on a plat on file in the Office of Mineral Resources, Department of Natural Resources. All bearings, distances and coordinates are based on Louisiana Coordinate System of 1927, (North or South Zone), where applicable.

NOTE: The above description of the Tract nominated for lease has been provided and corrected, where required, exclusively by the nomination party. Any mineral lease selected from this Tract and awarded by the Louisiana State Mineral and Energy Board shall be without warranty of any kind, either express, implied, or statutory, including, but not limited to, the implied warranties of merchantability and fitness for a particular purpose. Should the mineral lease awarded by the Louisiana State Mineral and Energy Board be subsequently modified, cancelled or abrogated due to the existence of conflicting leases, operating agreements, private claims or other future obligations or conditions which may affect all or any portion of the leased Tract, it shall not relieve the Lessee of the obligation to pay any bonus due thereon to the Louisiana State Mineral and Energy Board, nor shall the Louisiana State Mineral and Energy Board be obligated to refund any consideration paid by the Lessor prior to such modification, cancellation, or abrogation, including, but not limited to, bonuses, rentals and royalties.

NOTE: The State of Louisiana does hereby reserve, and this lease shall be subject to, the imprescriptible right of surface use in the nature of a servitude in favor of the Department of Natural Resources, including its Offices and Commissions, for the sole purpose of implementing, constructing, servicing and maintaining approved coastal zone management and/or restoration projects. Utilization of any and all rights derived under this lease by the mineral lessee, its agents, successors or assigns, shall not interfere with nor hinder the reasonable surface use by the Department of Natural Resources, its Offices or Commissions, as herein above reserved.

NOTE: This tract is located in an area designated by the Louisiana Legislature or the Wildlife and Fisheries Commission as a Public Oyster Seed Ground, Reservation, or area of Calcasieu or Sabine Lake. Proposed projects occurring in these areas will be evaluated on a case by case basis by Louisiana Department of Wildlife & Fisheries. Modifications to proposed project features including, but not limited to, access routes, well sites, flowlines, and appurtenant structures maybe required by the Louisiana Department of Wildlife and Fisheries. In addition, compensatory mitigation will be required to offset unavoidable habitat impacts.

Bidder	Cash Payment	Price/Acre	Rental	Oil	Gas	Other

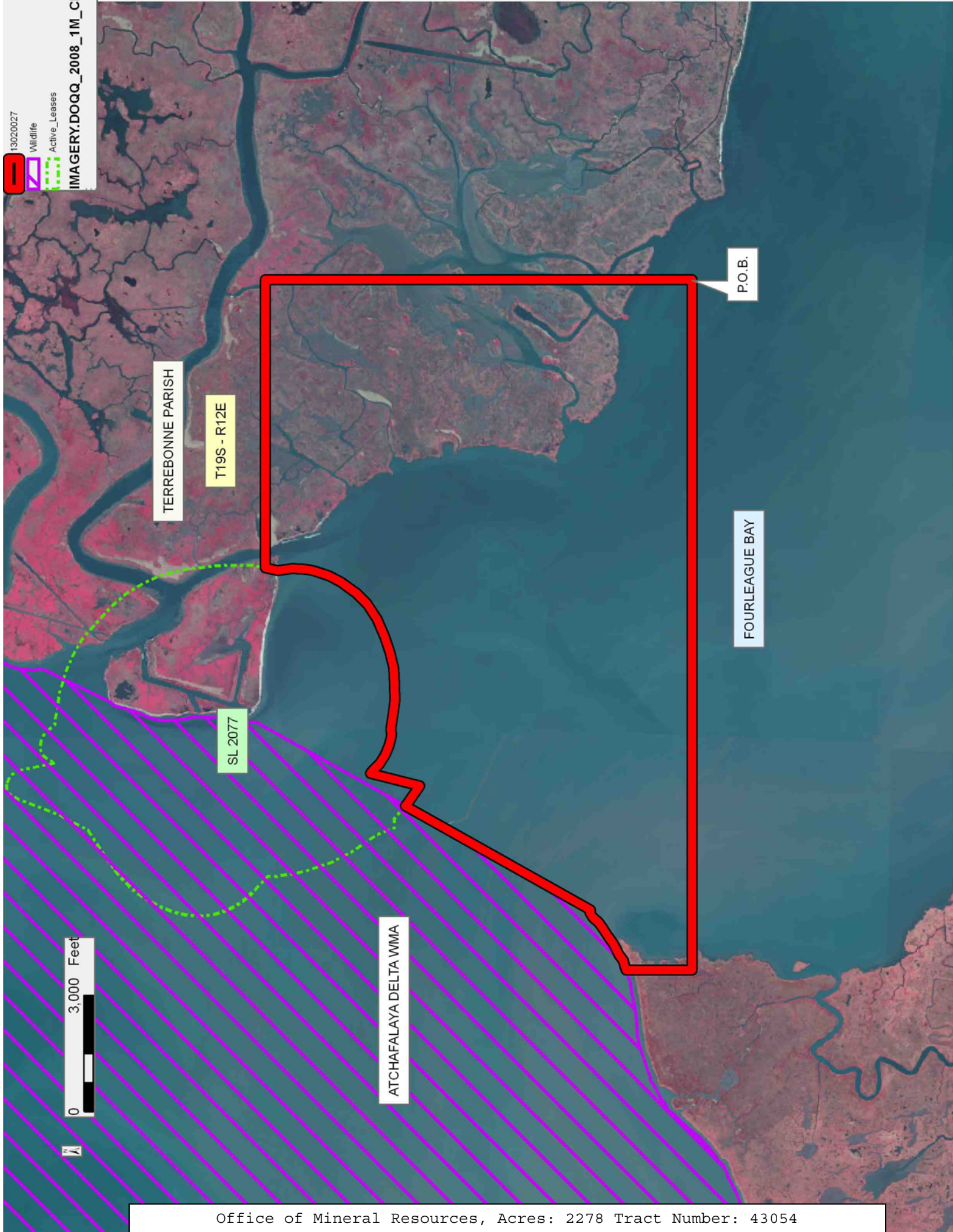
Applicant: THE GULF SHORES COMPANIES, INC.

13020027

Wildlife

Active_Leases

IMAGERY.DOQQ_2008_1M_CII



TERREBONNE PARISH

T19S - R12E

SL 2077

ATCHAFALAYA DELTA WMA

FOURLEAGUE BAY

P.O.B.

0 3,000 Feet

N

TRACT 43055 - Terrebonne Parish, Louisiana

All of the lands now or formerly constituting the beds and bottoms of all water bodies of every nature and description as to which title is vested in the State of Louisiana, together with all islands arising therein and other lands formed by accretion or by reliction, where allowed by law, excepting tax adjudicated lands, and not presently under mineral lease on February 13, 2013, situated in Terrebonne Parish, Louisiana, and more particularly described as follows: Beginning at a point having Coordinates of X = 2,047,600.00 and Y = 255,408.00; thence East 14,756.00 feet to a point having Coordinates of X = 2,062,356.00 and Y = 255,408.00; thence South 7,439.23 feet to a point on the Northern boundary of State Lease No. 19290 having Coordinates of X = 2,062,356.00 and Y = 247,968.77; thence along the boundary of said State Lease No. 19290 the following courses: West 2,760.14 feet, South 1,443.58 feet and East 1,144.14 feet to a point being the Northwest corner of State Lease No. 20563 having Coordinates of X = 2,060,740.00 and Y = 246,525.19; thence along the boundary of said State Lease No. 20563 the following courses: South 00 degrees 07 minutes 04 seconds East 2,171.38, West 941.00 feet, South 887.00 feet, West 1,565.00 feet and South 2,800.00 feet to a point having Coordinates of X = 2,058,238.46 and Y = 240,666.81; thence West 6,138.46 feet to a point having Coordinates of X = 2,052,100.00 and Y = 240,666.81; thence North 7,163.19 feet to a point having Coordinates of X = 2,052,100.00 and Y = 247,830.00; thence West 4,500.00 feet to a point having Coordinates of X = 2,047,600.00 and Y = 247,830.00; thence North 7,578.00 feet to the point of beginning, containing approximately **2,381 acres**, all as more particularly outlined on a plat on file in the Office of Mineral Resources, Department of Natural Resources. All bearings, distances and coordinates are based on Louisiana Coordinate System of 1927, (North or South Zone), where applicable.

NOTE: The above description of the Tract nominated for lease has been provided and corrected, where required, exclusively by the nomination party. Any mineral lease selected from this Tract and awarded by the Louisiana State Mineral and Energy Board shall be without warranty of any kind, either express, implied, or statutory, including, but not limited to, the implied warranties of merchantability and fitness for a particular purpose. Should the mineral lease awarded by the Louisiana State Mineral and Energy Board be subsequently modified, cancelled or abrogated due to the existence of conflicting leases, operating agreements, private claims or other future obligations or conditions which may affect all or any portion of the leased Tract, it shall not relieve the Lessee of the obligation to pay any bonus due thereon to the Louisiana State Mineral and Energy Board, nor shall the Louisiana State Mineral and Energy Board be obligated to refund any consideration paid by the Lessor prior to such modification, cancellation, or abrogation, including, but not limited to, bonuses, rentals and royalties.

NOTE: The State of Louisiana does hereby reserve, and this lease shall be subject to, the imprescriptible right of surface use in the nature of a

servitude in favor of the Department of Natural Resources, including its Offices and Commissions, for the sole purpose of implementing, constructing, servicing and maintaining approved coastal zone management and/or restoration projects. Utilization of any and all rights derived under this lease by the mineral lessee, its agents, successors or assigns, shall not interfere with nor hinder the reasonable surface use by the Department of Natural Resources, its Offices or Commissions, as herein above reserved.

Applicant: THE GULF SHORES COMPANIES, INC.

Bidder	Cash Payment	Price/Acre	Rental	Oil	Gas	Other

13020029

Active_Leases

IMAGERY.DOQQ_2008_1M_CIF

TERREBONNE PARISH

T19S - R13E

SL 19290

SL 20563

0 3,000 Feet

P.O.B.

FOURLEAGUE BAY

TRACT 43056 - Terrebonne Parish, Louisiana

All of the lands now or formerly constituting the beds and bottoms of all water bodies of every nature and description as to which title is vested in the State of Louisiana, together with all islands arising therein and other lands formed by accretion or by reliction, where allowed by law, excepting tax adjudicated lands, and not presently under mineral lease on February 13, 2013, situated in Terrebonne Parish, Louisiana, and more particularly described as follows: Beginning at a point having Coordinates of X = 2,029,800.00 and Y = 254,130.00; thence East 17,800.00 feet to a point having Coordinates of X = 2,047,600.00 and Y = 254,130.00; thence South 6,300.00 feet to a point having Coordinates of X = 2,047,600.00 and Y = 247,830.00; thence West 17,800.00 feet to a point having Coordinates of X = 2,029,800.00 and Y = 247,830.00; thence North 6,300.00 feet to the point of beginning, containing approximately **2,498 acres**, all as more particularly outlined on a plat on file in the Office of Mineral Resources, Department of Natural Resources. All bearings, distances and coordinates are based on Louisiana Coordinate System of 1927, (North or South Zone), where applicable.

NOTE: The above description of the Tract nominated for lease has been provided and corrected, where required, exclusively by the nomination party. Any mineral lease selected from this Tract and awarded by the Louisiana State Mineral and Energy Board shall be without warranty of any kind, either express, implied, or statutory, including, but not limited to, the implied warranties of merchantability and fitness for a particular purpose. Should the mineral lease awarded by the Louisiana State Mineral and Energy Board be subsequently modified, cancelled or abrogated due to the existence of conflicting leases, operating agreements, private claims or other future obligations or conditions which may affect all or any portion of the leased Tract, it shall not relieve the Lessee of the obligation to pay any bonus due thereon to the Louisiana State Mineral and Energy Board, nor shall the Louisiana State Mineral and Energy Board be obligated to refund any consideration paid by the Lessor prior to such modification, cancellation, or abrogation, including, but not limited to, bonuses, rentals and royalties.

NOTE: The State of Louisiana does hereby reserve, and this lease shall be subject to, the imprescriptible right of surface use in the nature of a servitude in favor of the Department of Natural Resources, including its Offices and Commissions, for the sole purpose of implementing, constructing, servicing and maintaining approved coastal zone management and/or restoration projects. Utilization of any and all rights derived under this lease by the mineral lessee, its agents, successors or assigns, shall not interfere with nor hinder the reasonable surface use by the Department of Natural Resources, its Offices or Commissions, as herein above reserved.

Applicant: THE GULF SHORES COMPANIES, INC.

Bidder	Cash Payment	Price/Acre	Rental	Oil	Gas	Other

Legend

13020028

IMAGERY.DOQQ_2008_1M_CIR

T19S - R12E

TERREBONNE PARISH

FOURLEAGUE BAY

P.O.B.

0 3,000 Feet



TRACT 43057 - Terrebonne Parish, Louisiana

All of the lands now or formerly constituting the beds and bottoms of all water bodies of every nature and description as to which title is vested in the State of Louisiana, together with all islands arising therein and other lands formed by accretion or by reliction, where allowed by law, excepting tax adjudicated lands, and not presently under mineral lease on February 13, 2013, situated in Terrebonne Parish, Louisiana, and more particularly described as follows: Beginning at a point having Coordinates of X = 2,043,000.00 and Y = 247,830.00; thence East 9,100.00 feet to a point having Coordinates of X = 2,052,100.00 and Y = 247,830.00; thence South 14,400.00 feet to a point having Coordinates of X = 2,052,100.00 and Y = 233,430.00; thence West 9,100.00 feet to a point having Coordinates of X = 2,043,000.00 and Y = 233,430.00; thence North 14,400.00 feet to the point of beginning, containing approximately **2,470 acres**, all as more particularly outlined on a plat on file in the Office of Mineral Resources, Department of Natural Resources. All bearings, distances and coordinates are based on Louisiana Coordinate System of 1927, (North or South Zone), where applicable.

NOTE: The above description of the Tract nominated for lease has been provided and corrected, where required, exclusively by the nomination party. Any mineral lease selected from this Tract and awarded by the Louisiana State Mineral and Energy Board shall be without warranty of any kind, either express, implied, or statutory, including, but not limited to, the implied warranties of merchantability and fitness for a particular purpose. Should the mineral lease awarded by the Louisiana State Mineral and Energy Board be subsequently modified, cancelled or abrogated due to the existence of conflicting leases, operating agreements, private claims or other future obligations or conditions which may affect all or any portion of the leased Tract, it shall not relieve the Lessee of the obligation to pay any bonus due thereon to the Louisiana State Mineral and Energy Board, nor shall the Louisiana State Mineral and Energy Board be obligated to refund any consideration paid by the Lessor prior to such modification, cancellation, or abrogation, including, but not limited to, bonuses, rentals and royalties.

NOTE: The State of Louisiana does hereby reserve, and this lease shall be subject to, the imprescriptible right of surface use in the nature of a servitude in favor of the Department of Natural Resources, including its Offices and Commissions, for the sole purpose of implementing, constructing, servicing and maintaining approved coastal zone management and/or restoration projects. Utilization of any and all rights derived under this lease by the mineral lessee, its agents, successors or assigns, shall not interfere with nor hinder the reasonable surface use by the Department of Natural Resources, its Offices or Commissions, as herein above reserved.

Applicant: THE GULF SHORES COMPANIES, INC.

Bidder	Cash Payment	Price/Acre	Rental	Oil	Gas	Other

13020031

IMAGERY.DOQQ_2008_1M_CIF

TERREBONNE PARISH

FOURLEAGUE BAY

P.O.B.

T20S - R12E

0 4,000 Feet



TRACT 43058 - Terrebonne Parish, Louisiana

All of the lands now or formerly constituting the beds and bottoms of all water bodies of every nature and description as to which title is vested in the State of Louisiana, together with all islands arising therein and other lands formed by accretion or by reliction, where allowed by law, excepting tax adjudicated lands, and not presently under mineral lease on February 13, 2013, situated in Terrebonne Parish, Louisiana, and more particularly described as follows: Beginning at a point having Coordinates of X = 2,031,400.00 and Y = 247,830.00; thence East 11,600.00 feet to a point having Coordinates of X = 2,043,000.00 and Y = 247,830.00; thence South 14,400.00 feet to a point having Coordinates of X = 2,043,000.00 and Y = 233,430.00; thence West 11,600.00 feet to a point having Coordinates of X = 2,031,400.00 and Y = 233,430.00; thence North 14,400.00 feet to the point of beginning, **LESS AND EXCEPT** any right, title, and interest in lands owned by and not under lease from the State of Louisiana, on behalf of the Terrebonne Parish School Board, situated in Section 16, Township 20 South, Range 12 East, Terrebonne Parish, Louisiana, contained within the above described tract, containing approximately **2,305 acres**, all as more particularly outlined on a plat on file in the Office of Mineral Resources, Department of Natural Resources. All bearings, distances and coordinates are based on Louisiana Coordinate System of 1927, (North or South Zone), where applicable.

NOTE: The above description of the Tract nominated for lease has been provided and corrected, where required, exclusively by the nomination party. Any mineral lease selected from this Tract and awarded by the Louisiana State Mineral and Energy Board shall be without warranty of any kind, either express, implied, or statutory, including, but not limited to, the implied warranties of merchantability and fitness for a particular purpose. Should the mineral lease awarded by the Louisiana State Mineral and Energy Board be subsequently modified, cancelled or abrogated due to the existence of conflicting leases, operating agreements, private claims or other future obligations or conditions which may affect all or any portion of the leased Tract, it shall not relieve the Lessee of the obligation to pay any bonus due thereon to the Louisiana State Mineral and Energy Board, nor shall the Louisiana State Mineral and Energy Board be obligated to refund any consideration paid by the Lessor prior to such modification, cancellation, or abrogation, including, but not limited to, bonuses, rentals and royalties.

NOTE: The State of Louisiana does hereby reserve, and this lease shall be subject to, the imprescriptible right of surface use in the nature of a servitude in favor of the Department of Natural Resources, including its Offices and Commissions, for the sole purpose of implementing, constructing, servicing and maintaining approved coastal zone management and/or restoration projects. Utilization of any and all rights derived under this lease by the mineral lessee, its agents, successors or assigns, shall not interfere with nor hinder the reasonable surface use by the

Department of Natural Resources, its Offices or Commissions, as herein above reserved.

Applicant: THE GULF SHORES COMPANIES, INC.

Bidder	Cash Payment	Price/Acre	Rental	Oil	Gas	Other

13020030

Counties

IMAGERY.DOQQ_2008_1M_CIF

TERREBONNE PARISH

FOURLEAGUE BAY



0 3,000 Feet

P.O.B.

T20S - R12E

CLAM LAKE

TRACT 43059 - Terrebonne Parish, Louisiana

All of the lands now or formerly constituting the beds and bottoms of all water bodies of every nature and description as to which title is vested in the State of Louisiana, together with all islands arising therein and other lands formed by accretion or by reliction, where allowed by law, excepting tax adjudicated lands, and not presently under mineral lease on February 13, 2013, situated in Terrebonne Parish, Louisiana, and more particularly described as follows: Beginning at a point having Coordinates of X = 2,052,100.00 and Y = 240,666.81; thence East 6,138.46 feet to the Southwest corner of State Lease No. 20563 having Coordinates of X = 2,058,238.46 and Y = 240,666.81; thence East 6,697.27 feet along the Southern boundary of said State Lease No. 20563 to a point being the Westernmost Northwest corner of State Lease No. 19979 having Coordinates of X = 2,064,935.73 and Y = 240,666.81; thence South 1,437.46 feet to a point being the Southwest corner of said State Lease No. 19979 having Coordinates of X = 2,064,935.73 and Y = 239,229.35; thence North 89 degrees 46 minutes 55 seconds East 2,271.31 feet to the Southeast corner of said State Lease No. 19979 having Coordinates of X = 2,067,207.02 and Y = 239,237.99; thence East 1,635.52 feet to a point having Coordinates of X = 2,068,842.54 and Y = 239,237.98; thence South 5,807.98 feet to a point having Coordinates of X = 2,068,842.54 and Y = 233,430.00; thence West 16,742.54 feet to a point having Coordinates of X = 2,052,100.00 and Y = 233,430.00; thence North 7,236.81 feet to the point of beginning, **LESS AND EXCEPT** any right, title, and interest in lands owned by and not under lease from the State of Louisiana, on behalf of the Terrebonne Parish School Board, situated in Section 16, Township 20 South, Range 13 East, Terrebonne Parish, Louisiana, contained within the above described tract, containing approximately **2,205 acres**, all as more particularly outlined on a plat on file in the Office of Mineral Resources, Department of Natural Resources. All bearings, distances and coordinates are based on Louisiana Coordinate System of 1927, (North or South Zone), where applicable.

NOTE: The above description of the Tract nominated for lease has been provided and corrected, where required, exclusively by the nomination party. Any mineral lease selected from this Tract and awarded by the Louisiana State Mineral and Energy Board shall be without warranty of any kind, either express, implied, or statutory, including, but not limited to, the implied warranties of merchantability and fitness for a particular purpose. Should the mineral lease awarded by the Louisiana State Mineral and Energy Board be subsequently modified, cancelled or abrogated due to the existence of conflicting leases, operating agreements, private claims or other future obligations or conditions which may affect all or any portion of the leased Tract, it shall not relieve the Lessee of the obligation to pay any bonus due thereon to the Louisiana State Mineral and Energy Board, nor shall the Louisiana State Mineral and Energy Board be obligated to refund any consideration paid by the Lessor prior to such modification, cancellation, or abrogation, including, but not limited to, bonuses, rentals and royalties.

NOTE: The State of Louisiana does hereby reserve, and this lease shall be subject to, the imprescriptible right of surface use in the nature of a servitude in favor of the Department of Natural Resources, including its Offices and Commissions, for the sole purpose of implementing, constructing, servicing and maintaining approved coastal zone management and/or restoration projects. Utilization of any and all rights derived under this lease by the mineral lessee, its agents, successors or assigns, shall not interfere with nor hinder the reasonable surface use by the Department of Natural Resources, its Offices or Commissions, as herein above reserved.

Applicant: THE GULF SHORES COMPANIES, INC.

Bidder	Cash Payment	Price/Acre	Rental	Oil	Gas	Other

13020032

Active_Leases

IMAGERY.DOQQ_2008_1M_CIF

0 4,000 Feet

TERREBONNE PARISH

SL 20563

SL 19979

T20S - R13E

FOURLEAGUE BAY

P.O.B.

TRACT 43060 - Portion of Blocks 113, 118, and 119, South Timbalier Area, Revised, Terrebonne Parish, Louisiana

All of the lands now or formerly constituting the beds and bottoms of all water bodies of every nature and description as to which title is vested in the State of Louisiana, together with all islands arising therein and other lands formed by accretion or by reliction, where allowed by law, excepting tax adjudicated lands, and not presently under mineral lease on February 13, 2013, situated in Terrebonne Parish, Louisiana, and more particularly described as follows: Beginning at a point being the Southeast corner of State Lease No. 18167, as amended, having Coordinates of X = 2,225,721.99 and Y = 173,241.55; thence North 00 degrees 20 minutes 05 seconds West 1,689.74 feet along the Eastern boundary of said State Lease No. 18167 to a point having Coordinates of X = 2,225,712.12 and Y = 174,931.26; thence East 7,618.00 feet to a point having Coordinates of X = 2,233,330.12 and Y = 174,931.26; thence South 00 degrees 21 minutes 02 seconds East 12,404.49 feet to a point having Coordinates of X = 2,233,406.00 and Y = 162,527.00; thence West 4,660.44 feet to a point on the Eastern boundary of State Lease No. 2620, as amended, having Coordinates of X = 2,228,745.56 and Y = 162,527.00; thence along the Eastern and Northern boundaries of said State Lease No. 2620 the following courses: North 19 degrees 57 minutes 05 seconds West 6,956.86 feet to a point having Coordinates of X = 2,226,371.72 and Y = 169,066.33, and West 5,921.72 feet to a point on the boundary of State Lease No. 16510, as amended, having Coordinates of X = 2,220,450.00 and Y = 169,066.33; thence North 1,533.67 feet along the Eastern boundary of State Lease No. 16510 to a point being its Northeast corner having Coordinates of X = 2,220,450.00 and Y = 170,600.00; thence North 00 degrees 10 minutes 26 seconds West 2,610.71 feet to a point on the Southern boundary of said State Lease No. 18167 having Coordinates of X = 2,220,442.08 and Y = 173,210.70; thence North 89 degrees 39 minutes 55 seconds East 5,280.00 feet along the Southern boundary of said State Lease No. 18167 to the point of beginning, containing approximately **2,405.48 acres**, all as more particularly outlined on a plat on file in the Office of Mineral Resources, Department of Natural Resources. All bearings, distances and coordinates are based on Louisiana Coordinate System of 1927, (North or South Zone), where applicable.

NOTE: The above description of the Tract nominated for lease has been provided and corrected, where required, exclusively by the nomination party. Any mineral lease selected from this Tract and awarded by the Louisiana State Mineral and Energy Board shall be without warranty of any kind, either express, implied, or statutory, including, but not limited to, the implied warranties of merchantability and fitness for a particular purpose. Should the mineral lease awarded by the Louisiana State Mineral and Energy Board be subsequently modified, cancelled or abrogated due to the existence of conflicting leases, operating agreements, private claims or other future obligations or conditions which may affect all or any portion of the leased Tract, it shall not relieve the Lessee of the obligation to pay any bonus due thereon to the Louisiana State Mineral and

Energy Board, nor shall the Louisiana State Mineral and Energy Board be obligated to refund any consideration paid by the Lessor prior to such modification, cancellation, or abrogation, including, but not limited to, bonuses, rentals and royalties.





NOTE: The State of Louisiana does hereby reserve, and this lease shall be subject to, the imprescriptible right of surface use in the nature of a servitude in favor of the Department of Natural Resources, including its Offices and Commissions, for the sole purpose of implementing, constructing, servicing and maintaining approved coastal zone management and/or restoration projects. Utilization of any and all rights derived under this lease by the mineral lessee, its agents, successors or assigns, shall not interfere with nor hinder the reasonable surface use by the Department of Natural Resources, its Offices or Commissions, as herein above reserved.

NOTE: It appears, according to our records, that a portion of this Tract is located within the restrictive safety fairway area as set out by the Corps of Engineers, U.S. Army and/or the restrictive anchorage area as set out by the U.S. Coast Guard.

Applicant: ROBERT A. SCHROEDER, INC.

Bidder	Cash Payment	Price/Acre	Rental	Oil	Gas	Other

13020043

-  13020043
-  Wildlife
-  Blocks
-  Active_Lease

