

TRACT 42009 - Portion of Block 9, Grand Isle Area, Plaquemines Parish, Louisiana

The beds and bottoms of all water bodies belonging to the State of Louisiana located in Block 9, Grand Isle Area, together with any present lands formed by accretion to the shoreline or islands formed therein, located in Plaquemines Parish, Louisiana, owned by and not presently under mineral lease as of April 13, 2011, from the State of Louisiana, the geographical area of which is more fully described as follows: Beginning at a point the West line of Block 9, Grand Isle Area, also being a point on the Louisiana Coastline, as decreed by the Supreme Court of the United States, as determined by a Special Master appointed therein, in litigation styled *United States v. State of Louisiana et al No. 9 Original*, in 1975, having Coordinates of X = 2,457,659.89 and Y = 199,081.30; thence Northeasterly, on a straight line, along the said Louisiana Coastline to a point on a Western boundary of State Lease No. 797, as amended, having Coordinates of X = 2,463,412.23 and Y = 200,140.49; thence along the boundary of said State Lease No. 797 the following courses: South 2,977.49 feet to a corner having Coordinates of X = 2,463,412.23 and Y = 197,163.00; East 1,331.69 feet to a corner having Coordinates of X = 2,464,743.92 and Y = 197,163.00; South 6,125.19 feet to a corner having Coordinates of X = 2,464,743.92 and Y = 191,037.81 and South 25 degrees 26 minutes 42 seconds West 6,093.51 feet to its Southwest corner, also being a point on the South line of said Block 9 having Coordinates of X = 2,462,125.87 and Y = 185,535.39; thence West 4,465.98 feet along the South line of said Block 9 to its Southwest corner, also being the Southeast corner of State Lease No. 19685 having Coordinates of X = 2,457,659.89 and Y = 185,535.39; thence North 7,379.02 feet along the East boundary of said State Lease No. 19685 to its Northeast corner, also being a point on the West line of said Block 9 having Coordinates of X = 2,457,659.89 and Y = 192,914.41; thence North 6,166.89 feet along the West line of said Block 9 to the point of beginning, containing approximately **2,048.87 acres**, all as more particularly outlined on a plat on file in the Office of Mineral Resources, Department of Natural Resources. All bearings, distances and coordinates are based on Louisiana Coordinate System of 1927, (North or South Zone).

NOTE: The above description of the Tract nominated for lease has been provided and corrected, where required, exclusively by the nomination party. Any mineral lease selected from this Tract and awarded by the Louisiana State Mineral and Energy Board shall be without warranty of any kind, either express, implied, or statutory, including, but not limited to, the implied warranties of merchantability and fitness for a particular purpose. Should the mineral lease awarded by the Louisiana State Mineral and Energy Board be subsequently modified, cancelled or abrogated due to the existence of conflicting leases, operating agreements, private claims or other future obligations or conditions which may affect all or any portion of the leased Tract, it shall not relieve the Lessee of the obligation to pay any bonus due thereon to the Louisiana State Mineral and Energy Board, nor shall the Louisiana State Mineral and Energy Board be

obligated to refund any consideration paid by the Lessor prior to such modification, cancellation, or abrogation, including, but not limited to, bonuses, rentals and royalties.

NOTE: The State of Louisiana does hereby reserve, and this lease shall be subject to, the imprescriptible right of surface use in the nature of a servitude in favor of the Department of Natural Resources, including its Offices and Commissions, for the sole purpose of implementing, constructing, servicing and maintaining approved coastal zone management and/or restoration projects. Utilization of any and all rights derived under this lease by the mineral lessee, its agents, successors or assigns, shall not interfere with nor hinder the reasonable surface use by the Department of Natural Resources, its Offices or Commissions, as herein above reserved.

NOTE: It appears, according to our records, that a portion of this Tract is located within the restrictive safety fairway area as set out by the Corps of Engineers, U.S. Army and/or the restrictive anchorage area as set out by the U.S. Coast Guard.

Applicant: EDWARD H. KILLGORE

Bidder	Cash Payment	Price/Acre	Rental	Oil	Gas	Other

Legend

- 11040060
- Blocks
- Active Leases

PLAQUEMINES PARISH

GI0008

GI0009

SL 797

GRAND ISLE AREA

P.O.B.

SL 19429

GI0018

GULF OF MEXICO

GI0010

SL 19685



TRACT 42010 - Portion of Block 9, Grand Isle Area, Plaquemines Parish, Louisiana

The beds and bottoms of all water bodies belonging to the State of Louisiana located in Block 9, Grand Isle Area, together with any present lands formed by accretion to the shoreline or islands formed therein, located in Plaquemines Parish, Louisiana, owned by and not presently under mineral lease as of April 13, 2011, from the State of Louisiana, the geographical area of which is more fully described as follows: Beginning at the Northeast corner of Block 9, Grand Isle Area, having Coordinates of X = 2,472,417.93 and Y = 200,293.43; thence South 14,758.04 feet along the East line of said Block 9 to its Southeast corner having Coordinates of X = 2,472,417.93 and Y = 185,535.39; thence West 6,592.93 feet along the South line of said Block 9 to the Southeast corner of State Lease No. 797, as amended, having Coordinates of X = 2,465,825.00 and Y = 185,535.39; thence along the boundary of said State Lease No. 797 the following courses: North 22 degrees 25 minutes 16 seconds East 7,826.23 feet to a point having Coordinates of X = 2,468,810.00 and Y = 192,770.00; North 3,575.00 feet to a point having Coordinates of X = 2,468,810.00 and Y = 196,345.00 and North 35 degrees 11 minutes 49 seconds West 4,831.80 feet to its Northeast corner, also being a point on the North line of said Block 9 having Coordinates of X = 2,466,025.00 and Y = 200,293.43; thence East 6,392.93 feet along the North line of said Block 9 to the point of beginning, containing approximately **1,596.46 acres**, all as more particularly outlined on a plat on file in the Office of Mineral Resources, Department of Natural Resources. All bearings, distances and coordinates are based on Louisiana Coordinate System of 1927, (North or South Zone).

NOTE: The above description of the Tract nominated for lease has been provided and corrected, where required, exclusively by the nomination party. Any mineral lease selected from this Tract and awarded by the Louisiana State Mineral and Energy Board shall be without warranty of any kind, either express, implied, or statutory, including, but not limited to, the implied warranties of merchantability and fitness for a particular purpose. Should the mineral lease awarded by the Louisiana State Mineral and Energy Board be subsequently modified, cancelled or abrogated due to the existence of conflicting leases, operating agreements, private claims or other future obligations or conditions which may affect all or any portion of the leased Tract, it shall not relieve the Lessee of the obligation to pay any bonus due thereon to the Louisiana State Mineral and Energy Board, nor shall the Louisiana State Mineral and Energy Board be obligated to refund any consideration paid by the Lessor prior to such modification, cancellation, or abrogation, including, but not limited to, bonuses, rentals and royalties.

NOTE: The State of Louisiana does hereby reserve, and this lease shall be subject to, the imprescriptible right of surface use in the nature of a servitude in favor of the Department of Natural Resources, including its Offices and Commissions, for the sole purpose of implementing,

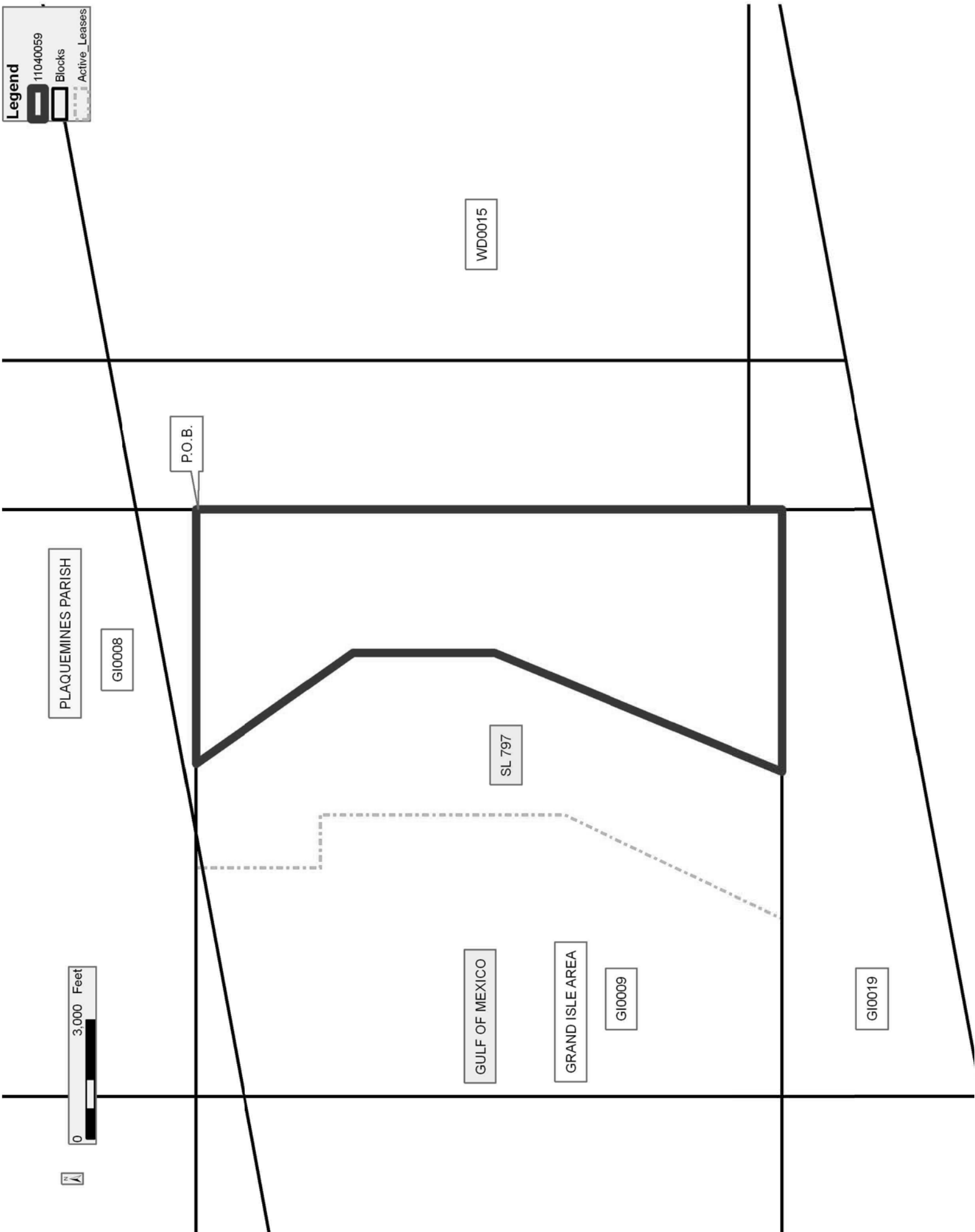
constructing, servicing and maintaining approved coastal zone management and/or restoration projects. Utilization of any and all rights derived under this lease by the mineral lessee, its agents, successors or assigns, shall not interfere with nor hinder the reasonable surface use by the Department of Natural Resources, its Offices or Commissions, as herein above reserved.

Applicant: EDWARD H. KILLGORE

Bidder	Cash Payment	Price/Acre	Rental	Oil	Gas	Other

Legend

- 11040059
- Blocks
- Active_Leases



TRACT 42011 - Portion of Block 10, Grand Isle Area, Jefferson and Plaquemines Parishes, Louisiana

The beds and bottoms of all water bodies belonging to the State of Louisiana located in Block 10, Grand Isle Area, together with any present lands formed by accretion to the shoreline or islands formed therein, located in Jefferson and Plaquemines Parishes, Louisiana, owned by and not presently under mineral lease as of April 13, 2011, from the State of Louisiana, the geographical area of which is more fully described as follows: Beginning at a point on the East line of Block 10, Grand Isle Area, also being a point on the Louisiana Coastline, as decreed by the Supreme Court of the United States, as determined by a Special Master appointed therein, in litigation styled *United States v. State of Louisiana et al No. 9 Original*, in 1975, having Coordinates of X = 2,457,659.89 and Y = 199,081.30; thence South 6,166.89 feet along the East line of said Block 10 to the Northeast corner of State Lease No. 19685 having Coordinates of X = 2,457,659.89 and Y = 192,914.41; thence West 7,379.02 feet along the North boundary of said State Lease No. 19685 to its Northwest corner, also being the Northeast corner of State Lease No. 19428 having Coordinates of X = 2,450,280.87 and Y = 192,914.41; thence West 4,770.87 feet along the North boundary of said State Lease No. 19428 to the Southeast corner of State Lease No. 19681 having Coordinates of X = 2,445,510.00 and Y = 192,914.41; thence North 3,929.72 feet along the East boundary of said State Lease No. 19681 to its Northeast corner, also being a point on the said Louisiana Coastline having Coordinates of X = 2,445,510.00 and Y = 196,844.13; thence Northeasterly, on a straight line, along the said Louisiana Coastline to the point of beginning, containing approximately **1,408.09 acres**, all as more particularly outlined on a plat on file in the Office of Mineral Resources, Department of Natural Resources. All bearings, distances and coordinates are based on Louisiana Coordinate System of 1927, (North or South Zone).

NOTE: The above description of the Tract nominated for lease has been provided and corrected, where required, exclusively by the nomination party. Any mineral lease selected from this Tract and awarded by the Louisiana State Mineral and Energy Board shall be without warranty of any kind, either express, implied, or statutory, including, but not limited to, the implied warranties of merchantability and fitness for a particular purpose. Should the mineral lease awarded by the Louisiana State Mineral and Energy Board be subsequently modified, cancelled or abrogated due to the existence of conflicting leases, operating agreements, private claims or other future obligations or conditions which may affect all or any portion of the leased Tract, it shall not relieve the Lessee of the obligation to pay any bonus due thereon to the Louisiana State Mineral and Energy Board, nor shall the Louisiana State Mineral and Energy Board be obligated to refund any consideration paid by the Lessor prior to such modification, cancellation, or abrogation, including, but not limited to, bonuses, rentals and royalties.

NOTE: The State of Louisiana does hereby reserve, and this lease shall be subject to, the imprescriptible right of surface use in the nature of a servitude in favor of the Department of Natural Resources, including its Offices and Commissions, for the sole purpose of implementing, constructing, servicing and maintaining approved coastal zone management and/or restoration projects. Utilization of any and all rights derived under this lease by the mineral lessee, its agents, successors or assigns, shall not interfere with nor hinder the reasonable surface use by the Department of Natural Resources, its Offices or Commissions, as herein above reserved.

Applicant: EDWARD H. KILLGORE

Bidder	Cash Payment	Price/Acre	Rental	Oil	Gas	Other

Legend

- 11040058
- Blocks
- Active_Leases
- Counties



JEFFERSON PARISH

G10007

PLAQUEMINES PARISH

P.O.B.

G10009

G10010

SL 19685

SL 19708

SL 19681

SL 19428

GULF OF MEXICO

GRAND ISLE AREA

TRACT 42012 - Portion of Block 19, Grand Isle Area, Plaquemines Parish, Louisiana

The beds and bottoms of all water bodies belonging to the State of Louisiana located in Block 19, Grand Isle Area, together with any present lands formed by accretion to the shoreline or islands formed therein, located in Plaquemines Parish, Louisiana, owned by and not presently under mineral lease as of April 13, 2011, from the State of Louisiana, the geographical area of which is more fully described as follows: Beginning at the Northeast corner of State Lease No. 19429, also being the Northwest corner of Block 19, Grand Isle Area, having Coordinates of X = 2,457,659.89 and Y = 185,535.39; thence East 4,465.98 feet along the North line of said Block 19 to the Southwest corner of State Lease No. 797, as amended, having Coordinates of X = 2,462,125.87 and Y = 185,535.39; thence East 3,699.13 feet along the South boundary of said State Lease No. 797 to its Southeast corner, also being a point on the North line of said Block 19 having Coordinates of X = 2,465,825.00 and Y = 185,535.39; thence East 6,592.93 feet along the North line of said Block 19 to its Northeast corner having Coordinates of X = 2,472,417.93 and Y = 185,535.39; thence South 2,283.78 feet along the East line of said Block 19 to a point on the Three Mile Line, as decreed by the Supreme Court of the United States, as determined by a Special Master appointed therein, in litigation styled *United States v. State of Louisiana et al No. 9 Original*, in 1975, having Coordinates of X = 2,472,417.93 and Y = 183,251.61; thence Southwesterly, on a straight line, along the said Three Mile Line to the Southeast corner of said State Lease No. 19429, also being a point on the West line of said Block 19 having Coordinates of X = 2,457,659.89 and Y = 180,534.16; thence North 5,001.23 feet along the West line of said Block 19 to the point of beginning, containing approximately **1,234.07 acres, LESS AND EXCEPT** that portion thereof, if any, lying seaward of the line three nautical miles from the coast line of Louisiana, as said three mile line has been decreed by the Supreme Court of the United States, as determined by a Special Master appointed therein, in litigation styled **United States v. State of Louisiana et al No. 9 Original**, in 1975, all as more particularly outlined on a plat in the Office of Mineral Resources, Department of Natural Resources. All bearings, distances and coordinates are based on the Louisiana Coordinate System of 1927, (South Zone).

NOTE: The above description of the Tract nominated for lease has been provided and corrected, where required, exclusively by the nomination party. Any mineral lease selected from this Tract and awarded by the Louisiana State Mineral and Energy Board shall be without warranty of any kind, either express, implied, or statutory, including, but not limited to, the implied warranties of merchantability and fitness for a particular purpose. Should the mineral lease awarded by the Louisiana State Mineral and Energy Board be subsequently modified, cancelled or abrogated due to the existence of conflicting leases, operating agreements, private claims or other future obligations or conditions which may affect all or any portion of the leased Tract, it shall not relieve the Lessee of the obligation to pay any bonus due thereon to the Louisiana State Mineral and

Energy Board, nor shall the Louisiana State Mineral and Energy Board be obligated to refund any consideration paid by the Lessor prior to such modification, cancellation, or abrogation, including, but not limited to, bonuses, rentals and royalties.

NOTE: The State of Louisiana does hereby reserve, and this lease shall be subject to, the imprescriptible right of surface use in the nature of a servitude in favor of the Department of Natural Resources, including its Offices and Commissions, for the sole purpose of implementing, constructing, servicing and maintaining approved coastal zone management and/or restoration projects. Utilization of any and all rights derived under this lease by the mineral lessee, its agents, successors or assigns, shall not interfere with nor hinder the reasonable surface use by the Department of Natural Resources, its Offices or Commissions, as herein above reserved.

Applicant: EDWARD H. KILLGORE

Bidder	Cash Payment	Price/Acre	Rental	Oil	Gas	Other

11040061

Blocks

Active_Lease

WEST DELTA AREA

WD0014

WD0037

SL 797

GI0019

PLAQUEMINES PARISH

GULF OF MEXICO

GRAND ISLE AREA

GI0009

2,000 Feet

0



SL 19685

P.O.B.

GI0018

SL 19429