

TRACT 42091 - Allen Parish, Louisiana

All of the lands now or formerly constituting the beds and bottoms of all water bodies of every nature and description as to which title is vested in the State of Louisiana, together with all islands arising therein and other lands formed by accretion or by reliction, where allowed by law, excepting tax adjudicated lands, and not presently under mineral lease on June 8, 2011, situated in Allen Parish, Louisiana, and more particularly described as follows: Beginning at a point having Coordinates of X = 1,492,779.00 and Y = 700,491.00; thence East 5,793.00 feet to a point having Coordinates of X = 1,498,572.00 and Y = 700,491.00; thence South 4,321.00 feet to a point having Coordinates of X = 1,498,572.00 and Y = 696,170.00; thence West 3,046.00 feet to a point having Coordinates of X = 1,495,526.00 and Y = 696,170.00; thence North 1,780.00 feet to a point having Coordinates of X = 1,495,526.00 and Y = 697,950.00; thence West 2,747.00 feet to a point having Coordinates of X = 1,492,779.00 and Y = 697,950.00; thence North 2,541.00 feet to the point of beginning, containing approximately **27 acres**, all as more particularly outlined on a plat on file in the Office of Mineral Resources, Department of Natural Resources. All bearings, distances and coordinates are based on Louisiana Coordinate System of 1927, (North or South Zone), where applicable.

NOTE: The above description of the Tract nominated for lease has been provided and corrected, where required, exclusively by the nomination party. Any mineral lease selected from this Tract and awarded by the Louisiana State Mineral and Energy Board shall be without warranty of any kind, either express, implied, or statutory, including, but not limited to, the implied warranties of merchantability and fitness for a particular purpose. Should the mineral lease awarded by the Louisiana State Mineral and Energy Board be subsequently modified, cancelled or abrogated due to the existence of conflicting leases, operating agreements, private claims or other future obligations or conditions which may affect all or any portion of the leased Tract, it shall not relieve the Lessee of the obligation to pay any bonus due thereon to the Louisiana State Mineral and Energy Board, nor shall the Louisiana State Mineral and Energy Board be obligated to refund any consideration paid by the Lessor prior to such modification, cancellation, or abrogation, including, but not limited to, bonuses, rentals and royalties.

NOTE: The above Tract is located upon a restricted scenic river and all operations in this area must be conducted in strict conformity with the regulations of the Corps of Engineers, U.S. Army.

Bidder	Cash Payment	Price/Acre	Rental	Oil	Gas	Other

--	--	--	--	--	--	--

Applicant: PATRICK L. DONOHUE PETROLEUM PROPERTIES, INC.

Legend

11060052

IMAGERY.DOQQ_2008_1M_CIR

ALLEN PARISH

T5S - R6W

P.O.B.

WHISKEY CHITTO CREEK

T6S - R6W

0 2,000 Feet



TRACT 42092 - Beauregard Parish, Louisiana

All of the lands now or formerly constituting the beds and bottoms of all water bodies of every nature and description the title of which vests in the State of Louisiana, together with all islands arising therein and other lands formed by accretion or by reliction, where allowed by law, excepting tax adjudicated lands, and not presently under mineral lease on June 8, 2011, situated in Beauregard Parish, Louisiana, and more particularly described as follows: Beginning at a point having Coordinates of X = 1,257,333.00 and Y = 698,498.00; thence South for a distance of 14,500.00 feet to a point having Coordinates of X = 1,257,333.00 and Y = 683,998.00; thence West for a distance of 18,400.00 feet to a point having Coordinates of X = 1,238,933.00 and Y = 683,998.00; thence North for a distance of 14,500.00 feet to a point having Coordinates of X = 1,238,933.00 and Y = 698,498.00; thence East for a distance of 18,400.00 feet to the Point of Beginning, containing **82 acres, LESS AND EXCEPT** that portion thereof, if any, located West of the boundary line between the States of Texas and Louisiana as determined by the report of the Special Master and adjudicated by the Supreme Court of the United States in litigation styled **Texas v. Louisiana, et al No. 36 Original**, or as otherwise approved by said court, all as more particularly outlined on a plat on file in the Office of Mineral Resources, Department of Natural Resources. All bearings, distances and coordinates are based on Louisiana Coordinate System of 1927, (North or South Zone), where applicable.

NOTE: The above description of the Tract nominated for lease has been provided and corrected, where required, exclusively by the nomination party. Any mineral lease selected from this Tract and awarded by the Louisiana State Mineral and Energy Board shall be without warranty of any kind, either express, implied, or statutory, including, but not limited to, the implied warranties of merchantability and fitness for a particular purpose. Should the mineral lease awarded by the Louisiana State Mineral and Energy Board be subsequently modified, cancelled or abrogated due to the existence of conflicting leases, operating agreements, private claims or other future obligations or conditions which may affect all or any portion of the leased Tract, it shall not relieve the Lessee of the obligation to pay any bonus due thereon to the Louisiana State Mineral and Energy Board, nor shall the Louisiana State Mineral and Energy Board be obligated to refund any consideration paid by the Lessor prior to such modification, cancellation, or abrogation, including, but not limited to, bonuses, rentals and royalties.

Applicant: AMEX RESOURCES, INC.

Bidder	Cash Payment	Price/Acre	Rental	Oil	Gas	Other

Legend

11060024

IMAGERY.DOQQ_2008_1M_CIR

BEAUREGARD PARISH

T6S - R13W

P.O.B.

SABINE RIVER

0 3,000 Feet



TRACT 42093 - Beauregard Parish, Louisiana

All of the lands now or formerly constituting the beds and bottoms of all water bodies of every nature and description the title of which vests in the State of Louisiana, together with all islands arising therein and other lands formed by accretion or by reliction, where allowed by law, excepting tax adjudicated lands, and not presently under mineral lease on June 8, 2011, situated in Beauregard Parish, Louisiana, and more particularly described as follows: Beginning at a point having Coordinates of X = 1,257,333.00 and Y = 683,998.00; thence South for a distance of 14,500.00 feet to a point having Coordinates of X = 1,257,333.00 and Y = 669,498.00; thence West for a distance of 18,400.00 feet to a point having Coordinates of X = 1,238,933.00 and Y = 669,498.00; thence North for a distance of 14,500.00 feet to a point having Coordinates of X = 1,238,933.00 and Y = 683,998.00; thence East for a distance of 18,400.00 feet to the Point of Beginning, containing **109 acres, LESS AND EXCEPT** that portion thereof, if any, located West of the boundary line between the States of Texas and Louisiana as determined by the report of the Special Master and adjudicated by the Supreme Court of the United States in litigation styled **Texas v. Louisiana, et al No. 36 Original**, or as otherwise approved by said court, all as more particularly outlined on a plat on file in the Office of Mineral Resources, Department of Natural Resources. All bearings, distances and coordinates are based on Louisiana Coordinate System of 1927, (North or South Zone), where applicable.

NOTE: The above description of the Tract nominated for lease has been provided and corrected, where required, exclusively by the nomination party. Any mineral lease selected from this Tract and awarded by the Louisiana State Mineral and Energy Board shall be without warranty of any kind, either express, implied, or statutory, including, but not limited to, the implied warranties of merchantability and fitness for a particular purpose. Should the mineral lease awarded by the Louisiana State Mineral and Energy Board be subsequently modified, cancelled or abrogated due to the existence of conflicting leases, operating agreements, private claims or other future obligations or conditions which may affect all or any portion of the leased Tract, it shall not relieve the Lessee of the obligation to pay any bonus due thereon to the Louisiana State Mineral and Energy Board, nor shall the Louisiana State Mineral and Energy Board be obligated to refund any consideration paid by the Lessor prior to such modification, cancellation, or abrogation, including, but not limited to, bonuses, rentals and royalties.

Applicant: AMEX RESOURCES, INC.

Bidder	Cash Payment	Price/Acre	Rental	Oil	Gas	Other

Legend

11060022

IMAGERY.DOQQ_2004_1M

BEAUREGARD PARISH

T6S - R13W

P.O.B.

SABINE RIVER

0 3,000 Feet



TRACT 42094 - Beauregard Parish, Louisiana

All of the lands now or formerly constituting the beds and bottoms of all water bodies of every nature and description the title of which vests in the State of Louisiana, together with all islands arising therein and other lands formed by accretion or by reliction, where allowed by law, excepting tax adjudicated lands, and not presently under mineral lease on June 8, 2011, situated in Beauregard Parish, Louisiana, and more particularly described as follows: Beginning at a point having Coordinates of X = 1,257,333.00 and Y = 669,498.00; thence South for a distance of 12,000.00 feet to a point having Coordinates of X = 1,257,333.00 and Y = 657,498.00; thence West for a distance of 18,400.00 feet to a point having Coordinates of X = 1,238,933.00 and Y = 657,498.00; thence North for a distance of 12,000.00 feet to a point having Coordinates of X = 1,238,933.00 and Y = 669,498.00; thence East for a distance of 18,400.00 feet to the Point of Beginning, containing **83 acres, LESS AND EXCEPT** that portion thereof, if any, located West of the boundary line between the States of Texas and Louisiana as determined by the report of the Special Master and adjudicated by the Supreme Court of the United States in litigation styled **Texas v. Louisiana, et al No. 36 Original**, or as otherwise approved by said court, all as more particularly outlined on a plat on file in the Office of Mineral Resources, Department of Natural Resources. All bearings, distances and coordinates are based on Louisiana Coordinate System of 1927, (North or South Zone), where applicable.

NOTE: The above description of the Tract nominated for lease has been provided and corrected, where required, exclusively by the nomination party. Any mineral lease selected from this Tract and awarded by the Louisiana State Mineral and Energy Board shall be without warranty of any kind, either express, implied, or statutory, including, but not limited to, the implied warranties of merchantability and fitness for a particular purpose. Should the mineral lease awarded by the Louisiana State Mineral and Energy Board be subsequently modified, cancelled or abrogated due to the existence of conflicting leases, operating agreements, private claims or other future obligations or conditions which may affect all or any portion of the leased Tract, it shall not relieve the Lessee of the obligation to pay any bonus due thereon to the Louisiana State Mineral and Energy Board, nor shall the Louisiana State Mineral and Energy Board be obligated to refund any consideration paid by the Lessor prior to such modification, cancellation, or abrogation, including, but not limited to, bonuses, rentals and royalties.

Applicant: AMEX RESOURCES, INC.

Bidder	Cash Payment	Price/Acre	Rental	Oil	Gas	Other

Legend

11060025

IMAGERY.DOQQ_2008_1M_CIR

T6S - R13W

P.O.B.

T7S - R13W

BEAUREGARD PARISH

SABINE RIVER

0 3,000 Feet



TRACT 42095 - St. Charles Parish, Louisiana

All of the lands now or formerly constituting the beds and bottoms of all water bodies of every nature and description as to which title is vested in the State of Louisiana, together with all islands arising therein and other lands formed by accretion or by reliction, where allowed by law, excepting tax adjudicated lands, and not presently under mineral lease on June 8, 2011, situated in St. Charles Parish, Louisiana, and more particularly described as follows: Beginning at a point having Coordinates X = 2,338,135.00 and Y = 392,969.00; thence East 13,329.00 feet to a point having Coordinates of X = 2,351,464.00 and Y = 392,969.00; thence South 7,108.00 feet to a point having Coordinates of X = 2,351,464.00 and Y = 385,861.00; thence West 5,954.00 feet to a point having Coordinates of X = 2,345,510.00 and Y = 385,861.00; thence South 753.00 feet to the Northeast corner of State Lease No. 19232, having Coordinates of X = 2,345,510.00 and Y = 385,108.00; thence West 6,418.50 feet along the North line of said State Lease No. 19232 to a point being the East corner of State Lease No. 19027 having Coordinates of X = 2,339,091.50 and Y = 385,108.00; thence West 956.50 along the North line of said State Lease No. 19207 to its Northwest corner, also being the Northeast corner of State Lease No. 19199 having Coordinates of X = 2,338,135.00 and Y = 385,108.00; thence North 7,861.00 feet to the point of beginning, containing approximately **2,302.48 acres**, all as more particularly outlined on a plat on file in the Office of Mineral Resources, Department of Natural Resources. All bearings, distances and coordinates are based on Louisiana Coordinate System of 1927, (North or South Zone), where applicable.

NOTE: The above description of the Tract nominated for lease has been provided and corrected, where required, exclusively by the nomination party. Any mineral lease selected from this Tract and awarded by the Louisiana State Mineral and Energy Board shall be without warranty of any kind, either express, implied, or statutory, including, but not limited to, the implied warranties of merchantability and fitness for a particular purpose. Should the mineral lease awarded by the Louisiana State Mineral and Energy Board be subsequently modified, cancelled or abrogated due to the existence of conflicting leases, operating agreements, private claims or other future obligations or conditions which may affect all or any portion of the leased Tract, it shall not relieve the Lessee of the obligation to pay any bonus due thereon to the Louisiana State Mineral and Energy Board, nor shall the Louisiana State Mineral and Energy Board be obligated to refund any consideration paid by the Lessor prior to such modification, cancellation, or abrogation, including, but not limited to, bonuses, rentals and royalties.

NOTE: The State of Louisiana does hereby reserve, and this lease shall be subject to, the imprescriptible right of surface use in the nature of a servitude in favor of the Department of Natural Resources, including its Offices and Commissions, for the sole purpose of implementing, constructing, servicing and maintaining approved coastal zone management and/or restoration projects. Utilization of any and all rights derived

under this lease by the mineral lessee, its agents, successors or assigns, shall not interfere with nor hinder the reasonable surface use by the Department of Natural Resources, its Offices or Commissions, as herein above reserved.

Applicant: SOUTHLAND OIL PROPERTIES, INC.

Bidder	Cash Payment	Price/Acre	Rental	Oil	Gas	Other

Legend
11060045
Active_Leases

ST CHARLES PARISH

LAKE SALVADOR

T16S - R22E

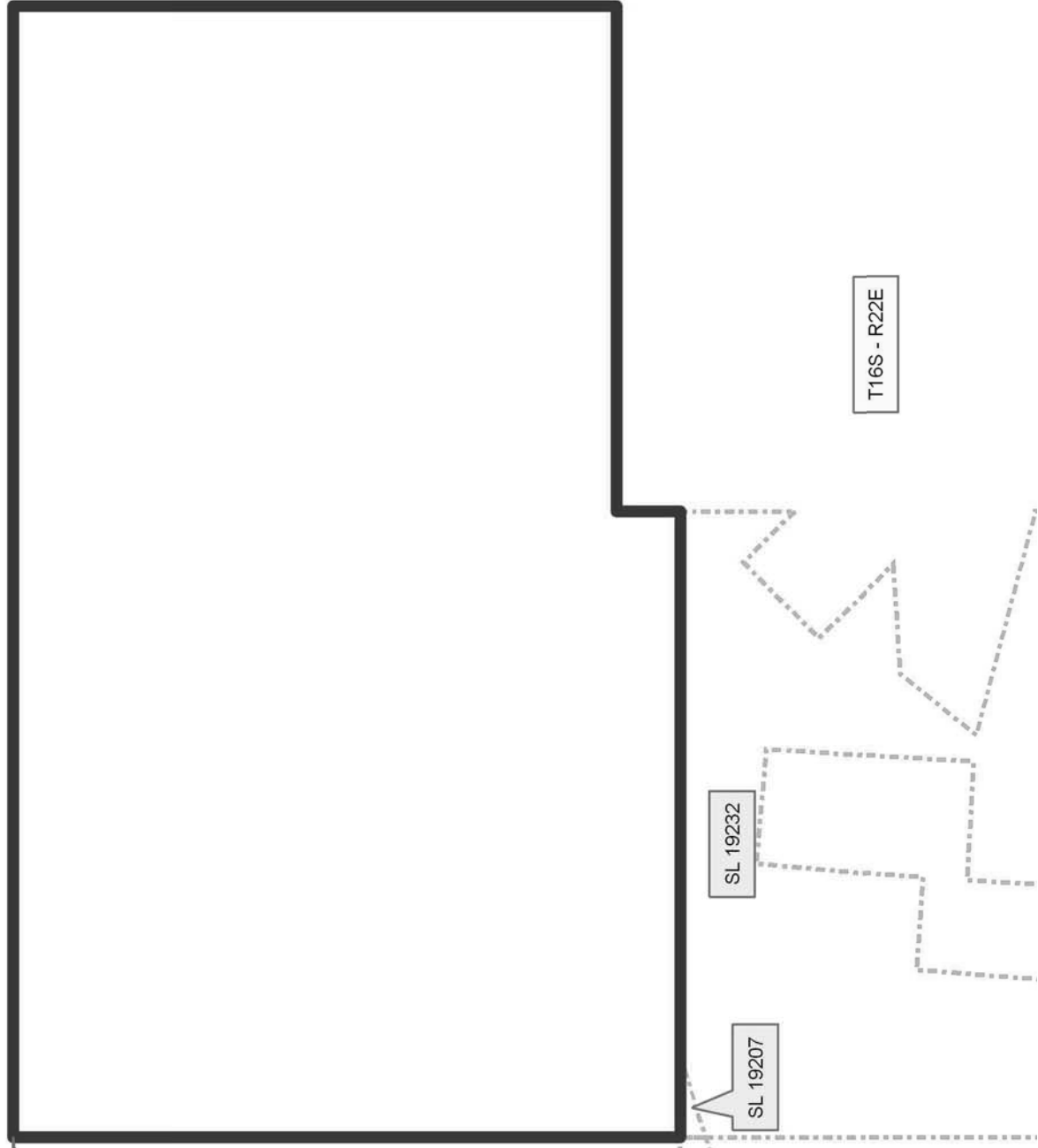


P.O.B.

SL 19199

SL 19207

SL 19232



TRACT 42096 - St. Charles Parish, Louisiana

All of the lands now or formerly constituting the beds and bottoms of all water bodies of every nature and description as to which title is vested in the State of Louisiana, together with all islands arising therein and other lands formed by accretion or by reliction, where allowed by law, excepting tax adjudicated lands, and not presently under mineral lease on June 8, 2011, situated in St. Charles Parish, Louisiana, and more particularly described as follows: Beginning at a point having Coordinates of X = 2,316,605.00 and Y = 390,212.00; thence East 14,497.00 feet to a point having Coordinates of X = 2,331,102.00 and Y = 390,212.00; thence South 6,849.00 feet to a point having Coordinates of X = 2,331,102.00 and Y = 383,363.00; thence West 14,497.00 feet to a point having Coordinates of X = 2,316,605.00 and Y = 383,363.00; thence North 6,849.00 feet to the point of beginning, (This lease includes only waterbottoms claimed and owned by the state and specifically excludes any land which falls within the Salvador Wildlife Management Area), containing approximately **2,206 acres**, all as more particularly outlined on a plat on file in the Office of Mineral Resources, Department of Natural Resources. All bearings, distances and coordinates are based on Louisiana Coordinate System of 1927, (North or South Zone), where applicable.

NOTE: The above description of the Tract nominated for lease has been provided and corrected, where required, exclusively by the nomination party. Any mineral lease selected from this Tract and awarded by the Louisiana State Mineral and Energy Board shall be without warranty of any kind, either express, implied, or statutory, including, but not limited to, the implied warranties of merchantability and fitness for a particular purpose. Should the mineral lease awarded by the Louisiana State Mineral and Energy Board be subsequently modified, cancelled or abrogated due to the existence of conflicting leases, operating agreements, private claims or other future obligations or conditions which may affect all or any portion of the leased Tract, it shall not relieve the Lessee of the obligation to pay any bonus due thereon to the Louisiana State Mineral and Energy Board, nor shall the Louisiana State Mineral and Energy Board be obligated to refund any consideration paid by the Lessor prior to such modification, cancellation, or abrogation, including, but not limited to, bonuses, rentals and royalties.

NOTE: The State of Louisiana does hereby reserve, and this lease shall be subject to, the imprescriptible right of surface use in the nature of a servitude in favor of the Department of Natural Resources, including its Offices and Commissions, for the sole purpose of implementing, constructing, servicing and maintaining approved coastal zone management and/or restoration projects. Utilization of any and all rights derived under this lease by the mineral lessee, its agents, successors or assigns, shall not interfere with nor hinder the reasonable surface use by the Department of Natural Resources, its Offices or Commissions, as herein above reserved.

Applicant: SOUTHLAND OIL PROPERTIES, INC.

Bidder	Cash Payment	Price/Acre	Rental	Oil	Gas	Other

Legend

11060038

Wildlife

IMAGERY.DOQQ_2008_1M_CIR

ST CHARLES PARISH

LAKE SALVADOR

T15S - R21E

0 2,000 Feet

SALVADOR WMA

P.O.B.

R21E

TRACT 42097 - St. Charles Parish, Louisiana

All of the lands now or formerly constituting the beds and bottoms of all water bodies of every nature and description as to which title is vested in the State of Louisiana, together with all islands arising therein and other lands formed by accretion or by reliction, where allowed by law, excepting tax adjudicated lands, and not presently under mineral lease on June 8, 2011, situated in St. Charles Parish, Louisiana, and more particularly described as follows: Beginning at a point having Coordinates X = 2,331,102.00 and Y = 390,212.00; thence East 7,033.00 feet to a point having Coordinates of X = 2,338,135.00 and Y = 390,212.00; thence South 5,104.00 feet to the Northeast corner of State Lease No. 19199, having Coordinates of X = 2,338,135.00 and Y = 385,108.00; thence along the boundaries of said State Lease No. 19199 the following courses: West 1,832.35 feet to a point having Coordinates of X = 2,336,302.65 and Y = 385,108.00, South 16 degrees 44 minutes 09 seconds East 858.03 feet to a point having Coordinates of X = 2,336,549.73 and Y = 384,286.31 and North 72 degrees 05 minutes 07 seconds East 1,666.05 feet to the Southeast corner of said State Lease No. 19199, also being the Northwest corner of State Lease No. 19232, having Coordinates of X = 2,338,135.00 and Y = 384,798.79; thence South 4,692.29 feet along the West line of said State Lease No. 19233 to the Northeast corner of State Lease No. 19773, having Coordinates of X = 2,338,135.00 and Y = 380,106.50; thence along the boundaries of said State Lease No. 19773 the following courses: South 88 degrees 53 minutes 18 seconds West 335.06 feet to a point having Coordinates of X = 2,337,800.00 and Y = 380,100.00, North 73 degrees 04 minutes 21 seconds West 2,404.16 feet to a point having Coordinates of X = 2,335,500.00 and Y = 380,800.00, North 12 degrees 33 minutes 40 seconds East 2,299.03 feet to a point having Coordinates of X = 2,336,000.00 and Y = 383,044.00 and South 45 degrees 06 minutes 35 seconds West 4,799.14 feet to an external corner on the West line of said State Lease No. 19773, also being the Northwest corner of State Lease No. 19201, having Coordinates of X = 2,332,600.00 and Y = 379,657.00; thence South 17 degrees 57 minutes 47 seconds East 4,044.13 feet along the West line of said State Lease No. 19201 to a point having Coordinates of X = 2,333,847.23 and Y = 375,810.00; thence West 2,745.23 feet to a point having Coordinates of X = 2,331,102.00 and Y = 375,810.00; thence North 14,402.00 feet to the Point of Beginning, containing approximately **1,717.14 acres**, all as more particularly outlined on a plat on file in the Office of Mineral Resources, Department of Natural Resources. All bearings, distances and coordinates are based on Louisiana Coordinate System of 1927, (North or South Zone), where applicable.

NOTE: The above description of the Tract nominated for lease has been provided and corrected, where required, exclusively by the nomination party. Any mineral lease selected from this Tract and awarded by the Louisiana State Mineral and Energy Board shall be without warranty of any kind, either express, implied, or statutory, including, but not limited to, the implied warranties of merchantability and fitness for a particular purpose. Should the mineral lease awarded by the Louisiana State Mineral

and Energy Board be subsequently modified, cancelled or abrogated due to the existence of conflicting leases, operating agreements, private claims or other future obligations or conditions which may affect all or any portion of the leased Tract, it shall not relieve the Lessee of the obligation to pay any bonus due thereon to the Louisiana State Mineral and Energy Board, nor shall the Louisiana State Mineral and Energy Board be obligated to refund any consideration paid by the Lessor prior to such modification, cancellation, or abrogation, including, but not limited to, bonuses, rentals and royalties.

NOTE: The State of Louisiana does hereby reserve, and this lease shall be subject to, the imprescriptible right of surface use in the nature of a servitude in favor of the Department of Natural Resources, including its Offices and Commissions, for the sole purpose of implementing, constructing, servicing and maintaining approved coastal zone management and/or restoration projects. Utilization of any and all rights derived under this lease by the mineral lessee, its agents, successors or assigns, shall not interfere with nor hinder the reasonable surface use by the Department of Natural Resources, its Offices or Commissions, as herein above reserved.

Applicant: SOUTHLAND OIL PROPERTIES, INC.

Bidder	Cash Payment	Price/Acre	Rental	Oil	Gas	Other

Legend

11060041

Active_Leases

IMAGERY.DOQQ_2008_1M_CIR

ST CHARLES PARISH

LAKE SALVADOR

P.O.B.

SL 19199

SL 19232

SL 19773

SL 19201

0 3,000 Feet

N

TRACT 42098 - Jefferson and St. Charles Parishes, Louisiana

All of the lands now or formerly constituting the beds and bottoms of all water bodies of every nature and description as to which title is vested in the State of Louisiana, together with all islands arising therein and other lands formed by accretion or by reliction, where allowed by law, excepting tax adjudicated lands, and not presently under mineral lease on June 8, 2011, situated in Jefferson and St. Charles Parishes, Louisiana, and more particularly described as follows: Beginning at a point having Coordinates X = 2,345,510.00 and Y = 385,861.00; thence East 10,628.00 feet to a point having Coordinates of X = 2,356,138.00 and Y = 385,861.00; thence South 10,051.00 feet to a point having Coordinates of X = 2,356,138.00 and Y = 375,810.00; thence West 10,628.00 feet to a point on the East line of State Lease No. 19232, having Coordinates of X = 2,345,510.00 and Y = 375,810.00; thence North 5,112.61 feet along the East line of said State Lease No. 19232 to the Southeast corner of State Lease No. 19204, having Coordinates of X = 2,345,510.00 and Y = 380,922.61; thence North 1,023.13 feet along the East line of said State Lease No. 19204 to its Northeast corner, also being the Southeast corner of State Lease No. 19203, having Coordinates of X = 2,345,510.00 and Y = 381,945.74; thence North 1,807.05 feet along the East line of said State Lease No. 19203 to its Northeast corner, also being an external corner on the East line of said State Lease No. 19232, having Coordinates of X = 2,345,510.00 and Y = 383,752.79; thence North 1,355.21 feet along the East line of said State Lease No. 19232 to its Northeast corner having Coordinates of X = 2,345,510.00 and Y = 385,108.00; thence North 753.00 feet to the point of beginning, containing approximately **2,452.30 acres**, all as more particularly outlined on a plat on file in the Office of Mineral Resources, Department of Natural Resources. All bearings, distances and coordinates are based on Louisiana Coordinate System of 1927, (North or South Zone), where applicable.

NOTE: The above description of the Tract nominated for lease has been provided and corrected, where required, exclusively by the nomination party. Any mineral lease selected from this Tract and awarded by the Louisiana State Mineral and Energy Board shall be without warranty of any kind, either express, implied, or statutory, including, but not limited to, the implied warranties of merchantability and fitness for a particular purpose. Should the mineral lease awarded by the Louisiana State Mineral and Energy Board be subsequently modified, cancelled or abrogated due to the existence of conflicting leases, operating agreements, private claims or other future obligations or conditions which may affect all or any portion of the leased Tract, it shall not relieve the Lessee of the obligation to pay any bonus due thereon to the Louisiana State Mineral and Energy Board, nor shall the Louisiana State Mineral and Energy Board be obligated to refund any consideration paid by the Lessor prior to such modification, cancellation, or abrogation, including, but not limited to, bonuses, rentals and royalties.

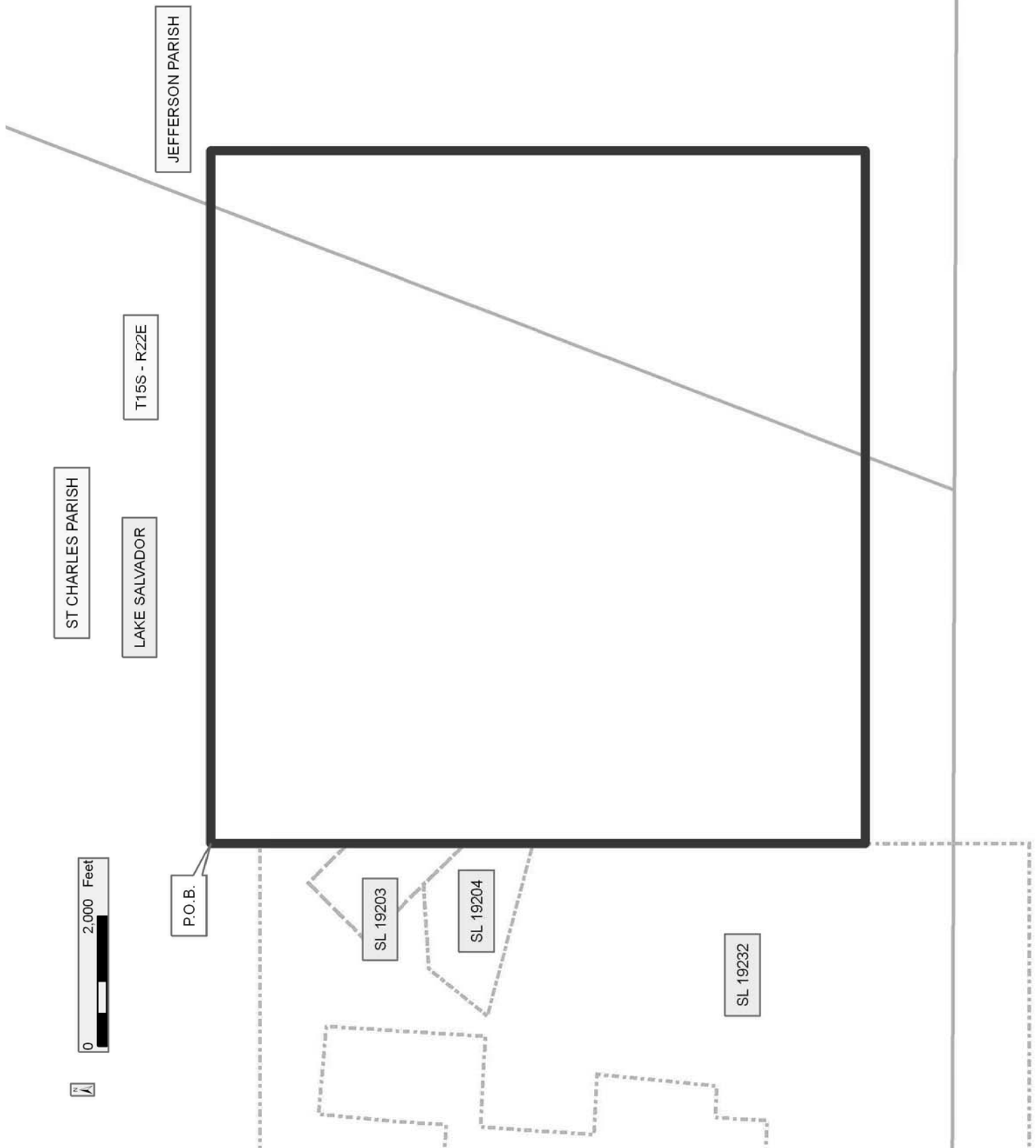
NOTE: The State of Louisiana does hereby reserve, and this lease shall be subject to, the imprescriptible right of surface use in the nature of a servitude in favor of the Department of Natural Resources, including its Offices and Commissions, for the sole purpose of implementing, constructing, servicing and maintaining approved coastal zone management and/or restoration projects. Utilization of any and all rights derived under this lease by the mineral lessee, its agents, successors or assigns, shall not interfere with nor hinder the reasonable surface use by the Department of Natural Resources, its Offices or Commissions, as herein above reserved.

Applicant: SOUTHLAND OIL PROPERTIES, INC.

Bidder	Cash Payment	Price/Acre	Rental	Oil	Gas	Other

Legend

- 11060044
- Active_Leases
- Counties



TRACT 42099 - St. Charles Parish, Louisiana

All of the lands now or formerly constituting the beds and bottoms of all water bodies of every nature and description as to which title is vested in the State of Louisiana, together with all islands arising therein and other lands formed by accretion or by reliction, where allowed by law, excepting tax adjudicated lands, and not presently under mineral lease on June 8, 2011, situated in St. Charles Parish, Louisiana, and more particularly described as follows: Beginning at a point having Coordinates X= 2,316,605.00 and Y= 383,363.00; thence East 14,497.00 feet to a point having Coordinates of X= 2,331,102.00 and Y= 383,363.00; thence South 7,553.00 feet to a point having Coordinates of X= 2,331,102.00 and Y= 375,810.00; thence West 14,497.00 feet to a point having Coordinates of X= 2,316,605.00 and Y= 375,810.00; thence North 2,359.06 feet to a point having Coordinates of X= 2,316,605.00 and Y= 378,169.06; thence East 99.26 feet to a point being the Southwest corner of State Lease No. 19774 having Coordinates of X = 2,316,704.26 and Y = 378,169.06; thence along the boundary of said State Lease No. 19774 the following courses: East 6,107.02 feet to a point having Coordinates of X= 2,322,811.28 and Y= 378.169.06, North 2,269.80 feet to a point having Coordinates of X= 2,322,811.28 and Y= 380,438.86 and West 6,107.02 feet to the Northwest corner of said State Lease No. 19774, having Coordinates of X= 2,316,704.26 and Y= 380,438.86; thence West 99.26 feet to a point having Coordinates of X = 2,316,605.00 and Y= 380,438.86; thence North 2,924.14 feet to the Point of Beginning, containing approximately **2,190.29 acres**, all as more particularly outlined on a plat on file in the Office of Mineral Resources, Department of Natural Resources. All bearings, distances and coordinates are based on Louisiana Coordinate System of 1927, (North or South Zone), where applicable.

NOTE: The above description of the Tract nominated for lease has been provided and corrected, where required, exclusively by the nomination party. Any mineral lease selected from this Tract and awarded by the Louisiana State Mineral and Energy Board shall be without warranty of any kind, either express, implied, or statutory, including, but not limited to, the implied warranties of merchantability and fitness for a particular purpose. Should the mineral lease awarded by the Louisiana State Mineral and Energy Board be subsequently modified, cancelled or abrogated due to the existence of conflicting leases, operating agreements, private claims or other future obligations or conditions which may affect all or any portion of the leased Tract, it shall not relieve the Lessee of the obligation to pay any bonus due thereon to the Louisiana State Mineral and Energy Board, nor shall the Louisiana State Mineral and Energy Board be obligated to refund any consideration paid by the Lessor prior to such modification, cancellation, or abrogation, including, but not limited to, bonuses, rentals and royalties.

NOTE: The State of Louisiana does hereby reserve, and this lease shall be subject to, the imprescriptible right of surface use in the nature of a servitude in favor of the Department of Natural Resources, including its

Offices and Commissions, for the sole purpose of implementing, constructing, servicing and maintaining approved coastal zone management and/or restoration projects. Utilization of any and all rights derived under this lease by the mineral lessee, its agents, successors or assigns, shall not interfere with nor hinder the reasonable surface use by the Department of Natural Resources, its Offices or Commissions, as herein above reserved.

Applicant: SOUTHLAND OIL PROPERTIES, INC.

Bidder	Cash Payment	Price/Acre	Rental	Oil	Gas	Other

Legend

11060039

Active_Leases

IMAGERY.D000_2008_1M_CIR

ST CHARLES PARISH

LAKE SALVADOR

0 2,000 Feet

P.O.B.

T16S - R21E

SL 19774

TRACT 42100 - Lafourche and St. Charles Parishes, Louisiana

All of the lands now or formerly constituting the beds and bottoms of all water bodies of every nature and description as to which title is vested in the State of Louisiana, together with all islands arising therein and other lands formed by accretion or by reliction, where allowed by law, excepting tax adjudicated lands, and not presently under mineral lease on June 8, 2011, situated in Lafourche and St. Charles Parishes, Louisiana, and more particularly described as follows: Beginning at a point on the East line of State Lease No. 19232, having Coordinates of X = 2,345,510.00 and Y = 375,810.00; thence East 5,356.00 feet to a point having Coordinates of X = 2,350,866.00 and Y = 375,810.00; thence South 9,475.00 feet to a point having Coordinates of X = 2,350,866.00 and Y = 366,335.00; thence West 11,302.00 feet to a point having Coordinates of X = 2,339,564.00 and Y = 366,335.00; thence North 6,965.00 feet to a point on the South line of said State Lease No. 19232, having Coordinates of X = 2,339,564.00 and Y = 373,300.00; thence East 5,946.00 feet along the South line of said State Lease No. 19232 to its Southeast corner, having Coordinates of X = 2,345,510.00 and Y = 373,300.00; thence North 2,510.00 feet along the East line of said State Lease No. 19232 to the point of beginning, containing approximately **2,115.75 acres**, all as more particularly outlined on a plat on file in the Office of Mineral Resources, Department of Natural Resources. All bearings, distances and coordinates are based on Louisiana Coordinate System of 1927, (North or South Zone), where applicable.

NOTE: The above description of the Tract nominated for lease has been provided and corrected, where required, exclusively by the nomination party. Any mineral lease selected from this Tract and awarded by the Louisiana State Mineral and Energy Board shall be without warranty of any kind, either express, implied, or statutory, including, but not limited to, the implied warranties of merchantability and fitness for a particular purpose. Should the mineral lease awarded by the Louisiana State Mineral and Energy Board be subsequently modified, cancelled or abrogated due to the existence of conflicting leases, operating agreements, private claims or other future obligations or conditions which may affect all or any portion of the leased Tract, it shall not relieve the Lessee of the obligation to pay any bonus due thereon to the Louisiana State Mineral and Energy Board, nor shall the Louisiana State Mineral and Energy Board be obligated to refund any consideration paid by the Lessor prior to such modification, cancellation, or abrogation, including, but not limited to, bonuses, rentals and royalties.

NOTE: The State of Louisiana does hereby reserve, and this lease shall be subject to, the imprescriptible right of surface use in the nature of a servitude in favor of the Department of Natural Resources, including its Offices and Commissions, for the sole purpose of implementing, constructing, servicing and maintaining approved coastal zone management and/or restoration projects. Utilization of any and all rights derived under this lease by the mineral lessee, its agents, successors or assigns,

shall not interfere with nor hinder the reasonable surface use by the Department of Natural Resources, its Offices or Commissions, as herein above reserved.

Applicant: SOUTHLAND OIL PROPERTIES, INC.

Bidder	Cash Payment	Price/Acre	Rental	Oil	Gas	Other

Legend

- 11060043 Active_Leases
- Counties

ST CHARLES PARISH

LAKE SALVADOR

P.O.B.

SL 19232

T16S - R22E

LAFOURCHE PARISH

T16S - R22E

