

TRACT 42125 - Portion of Blocks 16, and 17, Eugene Island Area, Revised, St. Mary Parish, Louisiana

The beds and bottoms of all water bodies belonging to the State of Louisiana located in Blocks 16, and 17, Eugene Island Area, Revised, together with any present lands formed by accretion to the shoreline or islands formed therein, located in St. Mary Parish, Louisiana, owned by and not presently under mineral lease as of July 13, 2011, from the State of Louisiana, the geographical area of which is more fully described as follows: Beginning at the Southeast corner of State Lease No. 18501, said point located on the South line of Block 17, Eugene Island Area, Revised, having Coordinates of X = 1,964,233.52 and Y = 240,895.42; thence North 1,900.00 feet along the East boundary of said State Lease No. 18501 to the Southeast corner of State Lease No. 19719 having Coordinates of X = 1,964,233.52 and Y = 242,795.42; thence North 3,712.84 feet along the East boundary of said State Lease No. 19719 to the Southeast corner of State Lease No. 19890 having Coordinates of X = 1,964,233.52 and Y = 246,508.26; thence North 01 degrees 01 minutes 13 seconds East 5,580.35 feet along the East boundary of said State Lease No. 19890 to a point on the Southern boundary of the Atchafalaya Delta Wildlife Management Area having Coordinates of X = 1,964,332.90 and Y = 252,087.73; thence Southeasterly, on a straight line, along the Southern boundary of said Atchafalaya Delta Wildlife Management Area to a point lying within Block 16, Eugene Island Area, Revised, having Coordinates of X = 1,978,064.00 and Y = 247,292.59; thence South 1,180.59 feet to a Northeast corner of State Lease No. 19720 having Coordinates of X = 1,978,064.00 and Y = 246,112.00; thence along the boundary of said State Lease No. 19720 the following courses: North 57 degrees 03 minutes 33 seconds West 3,350.68 feet to a corner having Coordinates of X = 1,975,252.00 and Y = 247,934.00; South 89 degrees 58 minutes 43 seconds West 5,296.32 feet to a corner having Coordinates of X = 1,969,955.68 and Y = 247,932.02 and South 1,036.60 feet to the Northwest corner of State Lease No. 19924 having Coordinates of X = 1,969,955.68 and Y = 246,895.42; thence South 6,000.00 feet along the West boundary of said State Lease No. 19924 to its Southwest corner also being the Southeast corner of said Block 17 having Coordinates of X = 1,969,955.68 and Y = 240,895.42; thence West 5,722.16 feet along the South line of said Block 17 to the point of beginning, containing approximately **1,540.23 acres**, all as more particularly outlined on a plat on file in the Office of Mineral Resources, Department of Natural Resources. All bearings, distances and coordinates are based on Louisiana Coordinate System of 1927, (North or South Zone).

NOTE: The above description of the Tract nominated for lease has been provided and corrected, where required, exclusively by the nomination party. Any mineral lease selected from this Tract and awarded by the Louisiana State Mineral and Energy Board shall be without warranty of any kind, either express, implied, or statutory, including, but not limited to, the implied warranties of merchantability and fitness for a particular purpose. Should the mineral lease awarded by the Louisiana State Mineral and Energy Board be subsequently modified, cancelled or abrogated due to

the existence of conflicting leases, operating agreements, private claims or other future obligations or conditions which may affect all or any portion of the leased Tract, it shall not relieve the Lessee of the obligation to pay any bonus due thereon to the Louisiana State Mineral and Energy Board, nor shall the Louisiana State Mineral and Energy Board be obligated to refund any consideration paid by the Lessor prior to such modification, cancellation, or abrogation, including, but not limited to, bonuses, rentals and royalties.

NOTE: The above described tract may be in the vicinity of existing shell reefs where drilling and dredging operations must be conducted in strict conformity with the regulations adopted by the Louisiana Department of Wildlife and Fisheries and/or the U.S. Corps of Engineers, U.S. Army.

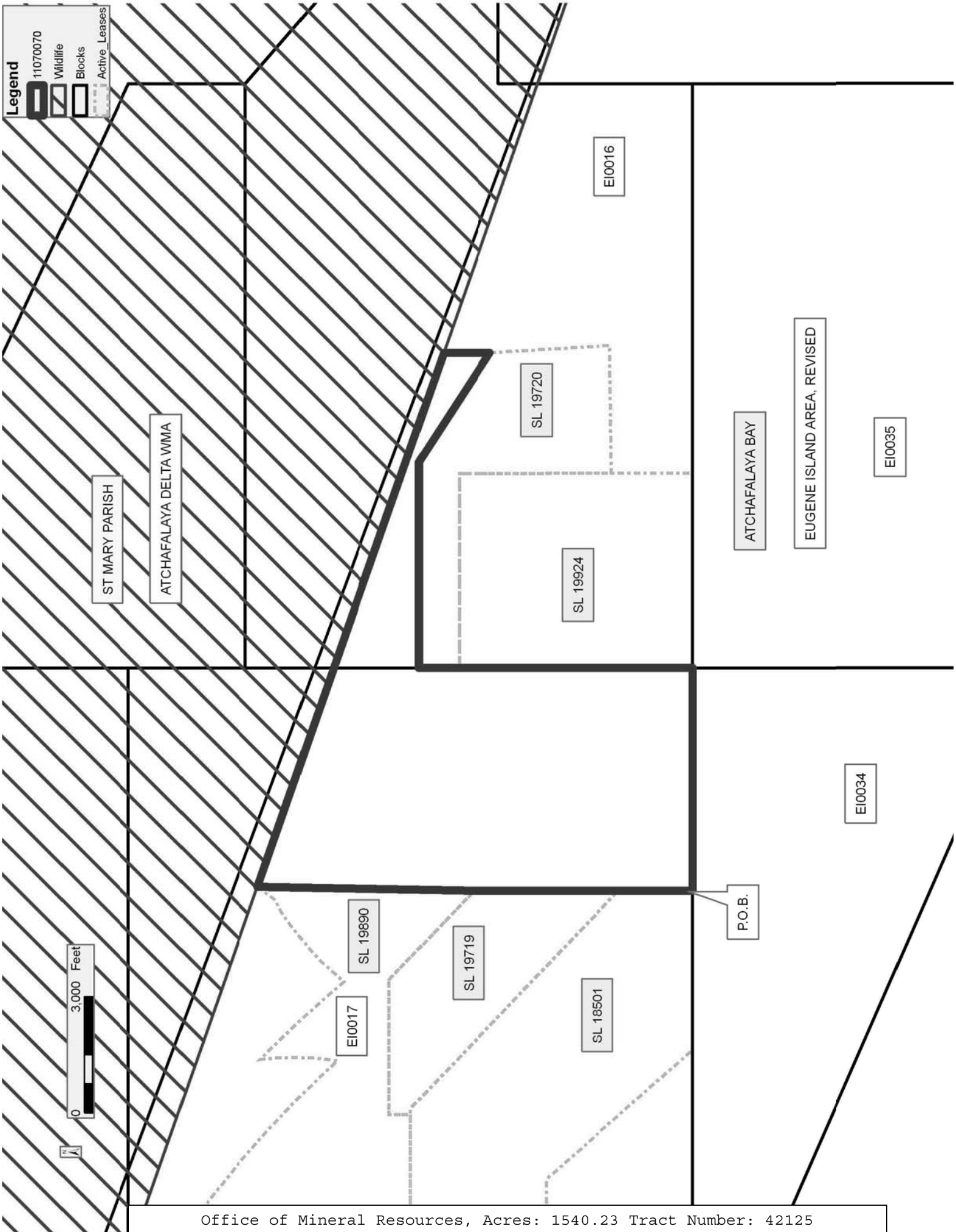
NOTE: The State of Louisiana does hereby reserve, and this lease shall be subject to, the imprescriptible right of surface use in the nature of a servitude in favor of the Department of Natural Resources, including its Offices and Commissions, for the sole purpose of implementing, constructing, servicing and maintaining approved coastal zone management and/or restoration projects. Utilization of any and all rights derived under this lease by the mineral lessee, its agents, successors or assigns, shall not interfere with nor hinder the reasonable surface use by the Department of Natural Resources, its Offices or Commissions, as herein above reserved.

NOTE: It appears, according to our records, that a portion of this Tract is located within the restrictive safety fairway area as set out by the Corps of Engineers, U.S. Army and/or the restrictive anchorage area as set out by the U.S. Coast Guard.

NOTE: This tract is located in an area designated by the Louisiana Legislature or the Wildlife and Fisheries Commission as a Public Oyster Seed Ground, Reservation, or area of Calcasieu or Sabine Lake. Proposed projects occurring in these areas will be evaluated on a case by case basis by Louisiana Department of Wildlife & Fisheries. Modifications to proposed project features including, but not limited to, access routes, well sites, flowlines, and appurtenant structures maybe required by the Louisiana Department of Wildlife and Fisheries. In addition, compensatory mitigation will be required to offset unavoidable habitat impacts.

Applicant: THEOPHILUS OIL, GAS & LAND SERVICES, LLC

Bidder	Cash Payment	Price/ Acre	Rental	Oil	Gas	Other



TRACT 42126 - Portion of Blocks 16, 35, and 36, Eugene Island Area, Revised, St. Mary Parish, Louisiana

The beds and bottoms of all water bodies belonging to the State of Louisiana located in Blocks 16, 35, and 36, Eugene Island Area, Revised, together with any present lands formed by accretion to the shoreline or islands formed therein, located in St. Mary Parish, Louisiana, owned by and not presently under mineral lease as of July 13, 2011, from the State of Louisiana, the geographical area of which is more fully described as follows: Beginning at a Northeast corner of State Lease No. 19720, said point located within Block 16, Eugene Island Area, Revised, having Coordinates of X = 1,978,064.00 and Y = 246,112.00; thence North 1,180.59 feet to a point said to be on the Southern boundary of the Atchafalaya Delta Wildlife Management Area having Coordinates of X = 1,978,064.00 and Y = 247,292.59; thence Southeasterly, on a straight line, along the Southern boundary of said Atchafalaya Delta Wildlife Management Area to a point lying within Block 36, Eugene Island Area, Revised, having Coordinates of X = 1,986,762.00 and Y = 244,255.09; thence South 11,970.18 feet to a point having Coordinates of X = 1,986,762.00 and Y = 232,284.91; thence West 7,912.00 feet to a point lying within Block 35, Eugene Island Area, Revised, having Coordinates of X = 1,978,850.00 and Y = 232,284.91; thence North 10,735.09 feet to a point having Coordinates of X = 1,978,850.00 and Y = 243,020.00; thence West 600.00 feet to the Southeast corner of said State Lease No. 19720 having Coordinates of X = 1,978,250.00 and Y = 243,020.00; thence North 03 degrees 26 minutes 33 seconds West 3,097.59 feet along the East boundary of said State Lease No. 19720 to the point of beginning, containing approximately **2,493.14 acres**, all as more particularly outlined on a plat on file in the Office of Mineral Resources, Department of Natural Resources. All bearings, distances and coordinates are based on Louisiana Coordinate System of 1927, (North or South Zone).

NOTE: The above description of the Tract nominated for lease has been provided and corrected, where required, exclusively by the nomination party. Any mineral lease selected from this Tract and awarded by the Louisiana State Mineral and Energy Board shall be without warranty of any kind, either express, implied, or statutory, including, but not limited to, the implied warranties of merchantability and fitness for a particular purpose. Should the mineral lease awarded by the Louisiana State Mineral and Energy Board be subsequently modified, cancelled or abrogated due to the existence of conflicting leases, operating agreements, private claims or other future obligations or conditions which may affect all or any portion of the leased Tract, it shall not relieve the Lessee of the obligation to pay any bonus due thereon to the Louisiana State Mineral and Energy Board, nor shall the Louisiana State Mineral and Energy Board be obligated to refund any consideration paid by the Lessor prior to such modification, cancellation, or abrogation, including, but not limited to, bonuses, rentals and royalties.

NOTE: The above described tract may be in the vicinity of existing shell reefs where drilling and dredging operations must be conducted in strict conformity with the regulations adopted by the Louisiana Department of Wildlife and Fisheries and/or the U.S. Corps of Engineers, U.S. Army.

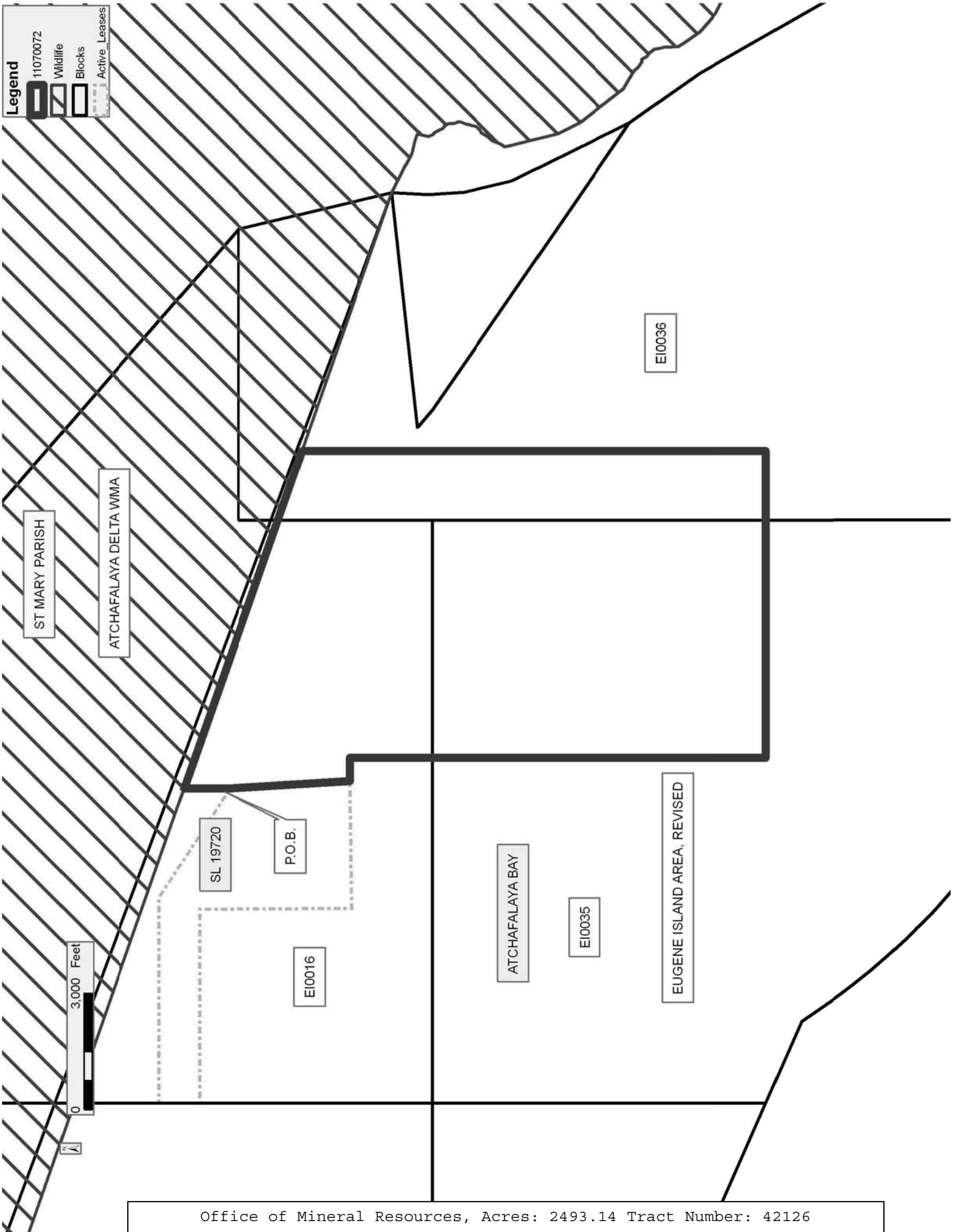
NOTE: The State of Louisiana does hereby reserve, and this lease shall be subject to, the imprescriptible right of surface use in the nature of a servitude in favor of the Department of Natural Resources, including its Offices and Commissions, for the sole purpose of implementing, constructing, servicing and maintaining approved coastal zone management and/or restoration projects. Utilization of any and all rights derived under this lease by the mineral lessee, its agents, successors or assigns, shall not interfere with nor hinder the reasonable surface use by the Department of Natural Resources, its Offices or Commissions, as herein above reserved.

NOTE: It appears, according to our records, that a portion of this Tract is located within the restrictive safety fairway area as set out by the Corps of Engineers, U.S. Army and/or the restrictive anchorage area as set out by the U.S. Coast Guard.

NOTE: This tract is located in an area designated by the Louisiana Legislature or the Wildlife and Fisheries Commission as a Public Oyster Seed Ground, Reservation, or area of Calcasieu or Sabine Lake. Proposed projects occurring in these areas will be evaluated on a case by case basis by Louisiana Department of Wildlife & Fisheries. Modifications to proposed project features including, but not limited to, access routes, well sites, flowlines, and appurtenant structures maybe required by the Louisiana Department of Wildlife and Fisheries. In addition, compensatory mitigation will be required to offset unavoidable habitat impacts.

Applicant: THEOPHILUS OIL, GAS & LAND SERVICES, LLC

Bidder	Cash Payment	Price/ Acre	Rental	Oil	Gas	Other



TRACT 42127 - Portion of Blocks 17, and 34, Eugene Island Area, Revised, St. Mary Parish, Louisiana

The beds and bottoms of all water bodies belonging to the State of Louisiana located in Blocks 17, and 34, Eugene Island Area, Revised, together with any present lands formed by accretion to the shoreline or islands formed therein, located in St. Mary Parish, Louisiana, owned by and not presently under mineral lease as of July 13, 2011, from the State of Louisiana, the geographical area of which is more fully described as follows: Beginning at the Northeast corner of Block 34, Eugene Island Area, Revised, having Coordinates of X = 1,969,955.68 and Y = 240,895.42; thence South 8,610.59 feet along the East line of said Block 34 to a point on the Three Mile Line, as decreed by the Supreme Court of the United States, as determined by a Special Master appointed therein, in litigation styled *United States v. State of Louisiana et al No. 9 Original*, in 1975, having Coordinates of X = 1,969,955.68 and Y = 232,284.83; thence Northwesterly on a straight line, along said Three Mile Line, to a point on the West line of said Block 34 having Coordinates of X = 1,954,933.52 and Y = 238,855.73; thence North 5,288.98 feet along the West lines of said Block 34 and Block 17, Eugene Island Area, Revised, to a corner on the Southern boundary of State Lease No. 19721 having Coordinates of X = 1,954,933.52 and Y = 244,144.71; thence along the boundary of said State Lease No. 19721 the following courses: East 600.00 feet to a corner and North 43 degrees 34 minutes 46 seconds East 700.00 feet to its Easternmost corner, also being a Southwest corner of State Lease No. 18501 having Coordinates of X = 1,956,016.07 and Y = 244,651.80; thence along the boundary of said State Lease No. 18501 the following courses: East 800.00 feet to a corner having Coordinates of X = 1,956,816.07 and Y = 244,651.80; South 41 degrees 26 minutes 58 seconds East 5,011.57 feet to a corner having Coordinates of X = 1,960,133.52 and Y = 240,895.42 and East 4,100.00 feet to its Southeast corner, located on the North line of said Block 34 having Coordinates of X = 1,964,233.52 and Y = 240,895.42; thence East 5,722.16 feet along the North line of said Block 34 to the point of beginning, containing approximately **2,132.02 acres, LESS AND EXCEPT** that portion thereof, if any, lying seaward of the line three nautical miles from the coast line of Louisiana, as said three mile line has been decreed by the Supreme Court of the United States, as determined by a Special Master appointed therein, in litigation styled **United States v. State of Louisiana et al No. 9 Original**, in 1975, all as more particularly outlined on a plat in the Office of Mineral Resources, Department of Natural Resources. All bearings, distances and coordinates are based on the Louisiana Coordinate System of 1927, (South Zone).

NOTE: The above description of the Tract nominated for lease has been provided and corrected, where required, exclusively by the nomination party. Any mineral lease selected from this Tract and awarded by the Louisiana State Mineral and Energy Board shall be without warranty of any kind, either express, implied, or statutory, including, but not limited to, the implied warranties of merchantability and fitness for a particular purpose. Should the mineral lease awarded by the Louisiana State Mineral

and Energy Board be subsequently modified, cancelled or abrogated due to the existence of conflicting leases, operating agreements, private claims or other future obligations or conditions which may affect all or any portion of the leased Tract, it shall not relieve the Lessee of the obligation to pay any bonus due thereon to the Louisiana State Mineral and Energy Board, nor shall the Louisiana State Mineral and Energy Board be obligated to refund any consideration paid by the Lessor prior to such modification, cancellation, or abrogation, including, but not limited to, bonuses, rentals and royalties.

NOTE: The above described tract may be in the vicinity of existing shell reefs where drilling and dredging operations must be conducted in strict conformity with the regulations adopted by the Louisiana Department of Wildlife and Fisheries and/or the U.S. Corps of Engineers, U.S. Army.

NOTE: The State of Louisiana does hereby reserve, and this lease shall be subject to, the imprescriptible right of surface use in the nature of a servitude in favor of the Department of Natural Resources, including its Offices and Commissions, for the sole purpose of implementing, constructing, servicing and maintaining approved coastal zone management and/or restoration projects. Utilization of any and all rights derived under this lease by the mineral lessee, its agents, successors or assigns, shall not interfere with nor hinder the reasonable surface use by the Department of Natural Resources, its Offices or Commissions, as herein above reserved.

NOTE: It appears, according to our records, that a portion of this Tract is located within the restrictive safety fairway area as set out by the Corps of Engineers, U.S. Army and/or the restrictive anchorage area as set out by the U.S. Coast Guard.

NOTE: This tract is located in an area designated by the Louisiana Legislature or the Wildlife and Fisheries Commission as a Public Oyster Seed Ground, Reservation, or area of Calcasieu or Sabine Lake. Proposed projects occurring in these areas will be evaluated on a case by case basis by Louisiana Department of Wildlife & Fisheries. Modifications to proposed project features including, but not limited to, access routes, well sites, flowlines, and appurtenant structures maybe required by the Louisiana Department of Wildlife and Fisheries. In addition, compensatory mitigation will be required to offset unavoidable habitat impacts.

Applicant: THEOPHILUS OIL, GAS & LAND SERVICES, LLC

Bidder	Cash Payment	Price/ Acre	Rental	Oil	Gas	Other

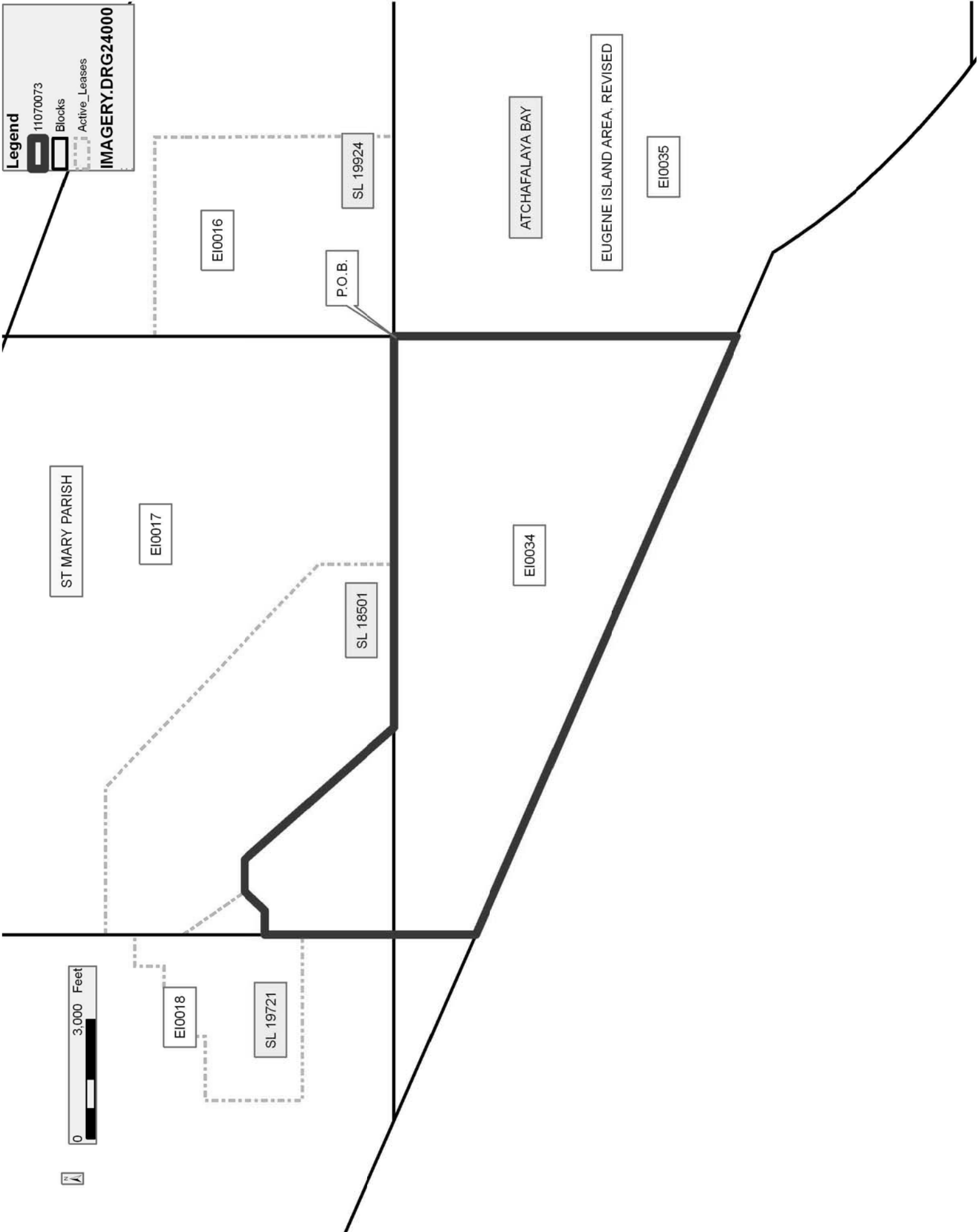
Legend

11070073

Blocks

Active_Leases

IMAGERY.DRG24000



TRACT 42128 - Portion of Blocks 16, and 35, Eugene Island Area, Revised, St. Mary Parish, Louisiana

The beds and bottoms of all water bodies belonging to the State of Louisiana located in Blocks 16, and 35, Eugene Island Area, Revised, together with any present lands formed by accretion to the shoreline or islands formed therein, located in St. Mary Parish, Louisiana, owned by and not presently under mineral lease as of July 13, 2011, from the State of Louisiana, the geographical area of which is more fully described as follows: Beginning at the Southwest corner of State Lease No. 19924, said point being the Southwest corner of Block 16 and the Northwest corner of Block 35, Eugene Island Area, Revised, having Coordinates of X = 1,969,955.68 and Y = 240,895.42; thence along the boundary of said State Lease No. 19924 the following courses: East 5,000.00 feet to its Southeast corner having Coordinates of X = 1,974,955.68 and Y = 240,895.42 and North 2,078.32 feet to a corner of State Lease No. 19720 having Coordinates of X = 1,974,955.68 and Y = 242,973.74; thence along the boundary of said State Lease No. 19720 the following courses: North 89 degrees 11 minutes 13 seconds East 18.32 feet to a corner having Coordinates of X = 1,974,974.00 and Y = 242,974.00 and North 89 degrees 11 minutes 44 seconds East 3,276.32 feet to its Southeast corner having Coordinates of X = 1,978,250.00 and Y = 243,020.00; thence East 600.00 feet to a point lying within said Block 16 having Coordinates of X = 1,978,850.00 and Y = 243,020.00; thence South 10,735.09 feet to a point lying within said Block 35 having Coordinates of X = 1,978,850.00 and Y = 232,284.91; thence West 8,894.32 feet to a point on the West line of said Block 35 having Coordinates of X = 1,969,955.68 and Y = 232,284.91; thence North 8,610.51 feet along the West line of said Block 35 to the point of beginning, containing approximately **1,946.33 acres**, all as more particularly outlined on a plat on file in the Office of Mineral Resources, Department of Natural Resources. All bearings, distances and coordinates are based on Louisiana Coordinate System of 1927, (North or South Zone).

NOTE: The above description of the Tract nominated for lease has been provided and corrected, where required, exclusively by the nomination party. Any mineral lease selected from this Tract and awarded by the Louisiana State Mineral and Energy Board shall be without warranty of any kind, either express, implied, or statutory, including, but not limited to, the implied warranties of merchantability and fitness for a particular purpose. Should the mineral lease awarded by the Louisiana State Mineral and Energy Board be subsequently modified, cancelled or abrogated due to the existence of conflicting leases, operating agreements, private claims or other future obligations or conditions which may affect all or any portion of the leased Tract, it shall not relieve the Lessee of the obligation to pay any bonus due thereon to the Louisiana State Mineral and Energy Board, nor shall the Louisiana State Mineral and Energy Board be obligated to refund any consideration paid by the Lessor prior to such modification, cancellation, or abrogation, including, but not limited to, bonuses, rentals and royalties.

NOTE: The above described tract may be in the vicinity of existing shell reefs where drilling and dredging operations must be conducted in strict conformity with the regulations adopted by the Louisiana Department of Wildlife and Fisheries and/or the U.S. Corps of Engineers, U.S. Army.

NOTE: The State of Louisiana does hereby reserve, and this lease shall be subject to, the imprescriptible right of surface use in the nature of a servitude in favor of the Department of Natural Resources, including its Offices and Commissions, for the sole purpose of implementing, constructing, servicing and maintaining approved coastal zone management and/or restoration projects. Utilization of any and all rights derived under this lease by the mineral lessee, its agents, successors or assigns, shall not interfere with nor hinder the reasonable surface use by the Department of Natural Resources, its Offices or Commissions, as herein above reserved.

NOTE: It appears, according to our records, that a portion of this Tract is located within the restrictive safety fairway area as set out by the Corps of Engineers, U.S. Army and/or the restrictive anchorage area as set out by the U.S. Coast Guard.

NOTE: This tract is located in an area designated by the Louisiana Legislature or the Wildlife and Fisheries Commission as a Public Oyster Seed Ground, Reservation, or area of Calcasieu or Sabine Lake. Proposed projects occurring in these areas will be evaluated on a case by case basis by Louisiana Department of Wildlife & Fisheries. Modifications to proposed project features including, but not limited to, access routes, well sites, flowlines, and appurtenant structures maybe required by the Louisiana Department of Wildlife and Fisheries. In addition, compensatory mitigation will be required to offset unavoidable habitat impacts.

Applicant: THEOPHILUS OIL, GAS & LAND SERVICES, LLC

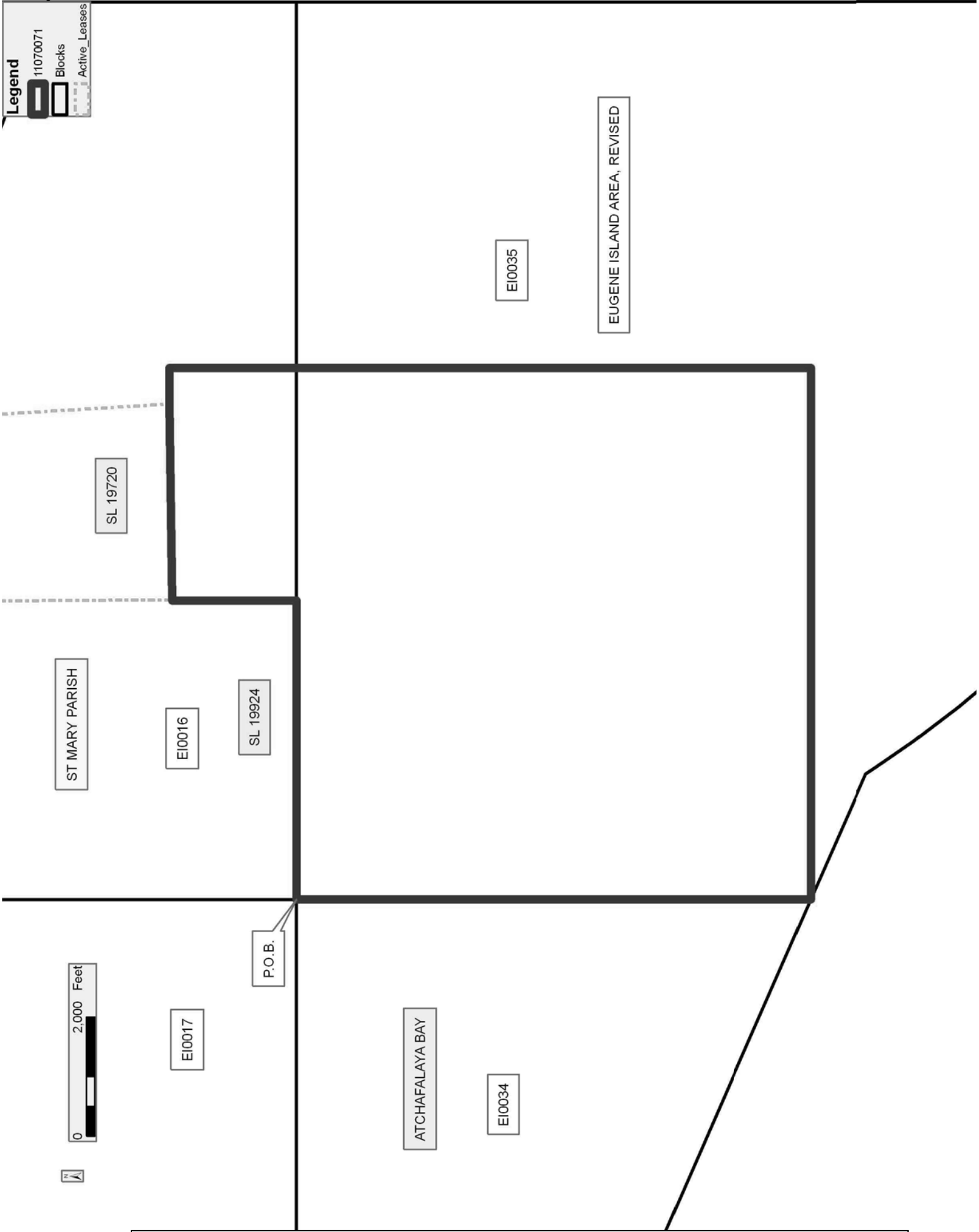
Bidder	Cash Payment	Price/ Acre	Rental	Oil	Gas	Other

Legend

11070071

Blocks

Active_Leases



TRACT 42129 - Portion of Block 70, Main Pass Area, Revised, Plaquemines Parish, Louisiana

The beds and bottoms of all water bodies belonging to the State of Louisiana located in Block 70, Main Pass Area, Revised, together with any present lands formed by accretion to the shoreline or islands formed therein, located in Plaquemines Parish, Louisiana, owned by and not presently under mineral lease as of July 13, 2011, from the State of Louisiana, the geographical area of which is more fully described as follows: Beginning at a point being the Southeast corner of Main Pass Area, Revised Block 70, having Coordinates of X = 2,751,245.00 and Y = 214,972.00; thence West 10,535.00 feet to a point having Coordinates of X = 2,740,710.00 and Y = 214,972.00; thence North 9,770.00 feet to a point having Coordinates of X = 2,740,710.00 and Y = 224,742.00; thence East 8,936.00 feet to a point on the *Three Mile Line*, as decreed by the Supreme Court of the United States, as determined by a Special Master appointed therein, in litigation styled *United States v. State of Louisiana et al No. 9 Original*, in 1975, having Coordinates of X = 2,749,646 and Y = 224,742; thence Southeasterly along an arc to the right having a radius of 18,240.60 feet and a center at X = 2,750,755 and Y = 206,535 to a point having Coordinates of X = 2,751,245.00 and Y = 224,769.02; thence South 9,797.02 feet to the point of beginning, containing approximately **2,363.80 acres, LESS AND EXCEPT** that portion thereof, if any, lying seaward of the line three nautical miles from the coast line of Louisiana, as said three mile line has been decreed by the Supreme Court of the United States, as determined by a Special Master appointed therein, in litigation styled **United States v. State of Louisiana et al No. 9 Original**, in 1975, all as more particularly outlined on a plat in the Office of Mineral Resources, Department of Natural Resources. All bearings, distances and coordinates are based on the Louisiana Coordinate System of 1927, (South Zone).

NOTE: The above description of the Tract nominated for lease has been provided and corrected, where required, exclusively by the nomination party. Any mineral lease selected from this Tract and awarded by the Louisiana State Mineral and Energy Board shall be without warranty of any kind, either express, implied, or statutory, including, but not limited to, the implied warranties of merchantability and fitness for a particular purpose. Should the mineral lease awarded by the Louisiana State Mineral and Energy Board be subsequently modified, cancelled or abrogated due to the existence of conflicting leases, operating agreements, private claims or other future obligations or conditions which may affect all or any portion of the leased Tract, it shall not relieve the Lessee of the obligation to pay any bonus due thereon to the Louisiana State Mineral and Energy Board, nor shall the Louisiana State Mineral and Energy Board be obligated to refund any consideration paid by the Lessor prior to such modification, cancellation, or abrogation, including, but not limited to, bonuses, rentals and royalties.

NOTE: The State of Louisiana does hereby reserve, and this lease shall be subject to, the imprescriptible right of surface use in the nature of a

servitude in favor of the Department of Natural Resources, including its Offices and Commissions, for the sole purpose of implementing, constructing, servicing and maintaining approved coastal zone management and/or restoration projects. Utilization of any and all rights derived under this lease by the mineral lessee, its agents, successors or assigns, shall not interfere with nor hinder the reasonable surface use by the Department of Natural Resources, its Offices or Commissions, as herein above reserved.

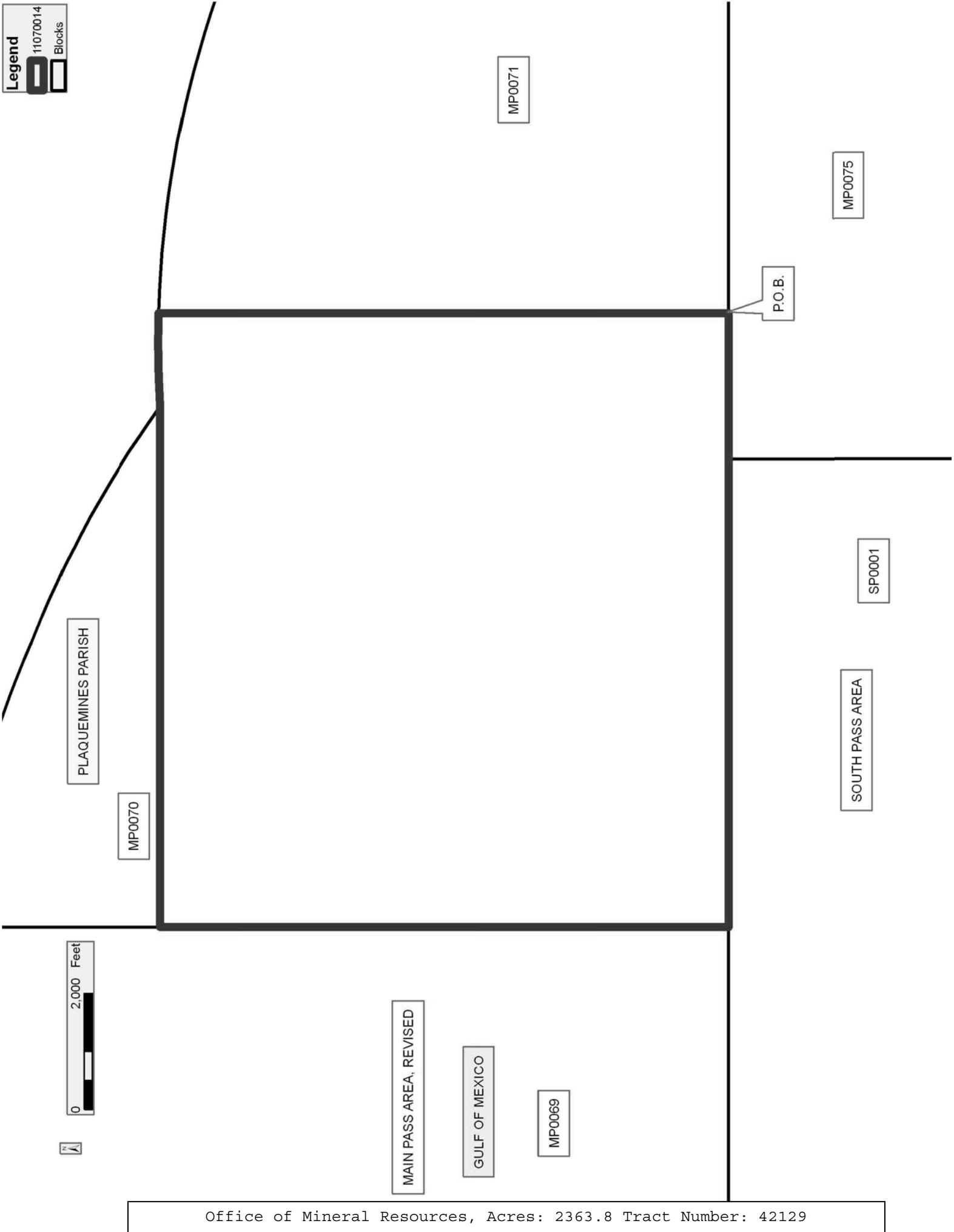
Applicant: MERLIN OIL & GAS

Bidder	Cash Payment	Price/ Acre	Rental	Oil	Gas	Other

Legend

11070014

Blocks



TRACT 42130 - Portion of Block 71, Main Pass Area, Revised, Plaquemines Parish, Louisiana

The beds and bottoms of all water bodies belonging to the State of Louisiana located in Block 71, Main Pass Area, Revised, together with any present lands formed by accretion to the shoreline or islands formed therein, located in Plaquemines Parish, Louisiana, owned by and not presently under mineral lease as of July 13, 2011, from the State of Louisiana, the geographical area of which is more fully described as follows: Beginning at a point being the Southwest corner of Main Pass Area, Revised Block 71, having Coordinates of X = 2,751,245.00 and Y = 214,972.00; thence North 9,797.02 feet to a point on the Three Mile Line, as decreed by the Supreme Court of the United States, as determined by a Special Master appointed therein, in litigation styled *United States v. State of Louisiana et al No. 9 Original*, in 1975, having Coordinates of X = 2,751,245.00 and Y = 224,769.02; thence Southwesterly along an arc to the right having a radius of 18,240.60 feet and a center located at X = 2,750,755 and Y = 206,535 to a point having Coordinates of X = 2,759,837 and Y = 222,354; thence Southwesterly along an arc to the right having a radius of 18,240.60 feet and a center at X = 2,755,325 and Y = 204,680 to a point having Coordinates of X = 2,761,780.00 and Y = 221,740.26; thence South 3,638.26 feet to the Northeast corner of State Lease No. 19271 having Coordinates of X = 2,761,780.00 and Y = 218,102.00; thence along the boundary of said State Lease No. 19271 the following course: West 1,685.00 feet to a point having Coordinates of X = 2,760,095.00 and Y = 218,102.00 and South 3,130.00 feet to a point on the Northern boundary of State Lease No. 19680 having Coordinates of X = 2,760,095.00 and Y = 214,972.00; thence West 8,850.00 feet to the Point of Beginning, containing approximately **1,965.58 acres, LESS AND EXCEPT** that portion thereof, if any, lying seaward of the line three nautical miles from the coast line of Louisiana, as said three mile line has been decreed by the Supreme Court of the United States, as determined by a Special Master appointed therein, in litigation styled **United States v. State of Louisiana et al No. 9 Original**, in 1975, all as more particularly outlined on a plat in the Office of Mineral Resources, Department of Natural Resources. All bearings, distances and coordinates are based on the Louisiana Coordinate System of 1927, (South Zone).

NOTE: The above description of the Tract nominated for lease has been provided and corrected, where required, exclusively by the nomination party. Any mineral lease selected from this Tract and awarded by the Louisiana State Mineral and Energy Board shall be without warranty of any kind, either express, implied, or statutory, including, but not limited to, the implied warranties of merchantability and fitness for a particular purpose. Should the mineral lease awarded by the Louisiana State Mineral and Energy Board be subsequently modified, cancelled or abrogated due to the existence of conflicting leases, operating agreements, private claims or other future obligations or conditions which may affect all or any portion of the leased Tract, it shall not relieve the Lessee of the obligation to pay any bonus due thereon to the Louisiana State Mineral and

Energy Board, nor shall the Louisiana State Mineral and Energy Board be obligated to refund any consideration paid by the Lessor prior to such modification, cancellation, or abrogation, including, but not limited to, bonuses, rentals and royalties.

NOTE: The State of Louisiana does hereby reserve, and this lease shall be subject to, the imprescriptible right of surface use in the nature of a servitude in favor of the Department of Natural Resources, including its Offices and Commissions, for the sole purpose of implementing, constructing, servicing and maintaining approved coastal zone management and/or restoration projects. Utilization of any and all rights derived under this lease by the mineral lessee, its agents, successors or assigns, shall not interfere with nor hinder the reasonable surface use by the Department of Natural Resources, its Offices or Commissions, as herein above reserved.

Applicant: MERLIN OIL & GAS

Bidder	Cash Payment	Price/ Acre	Rental	Oil	Gas	Other

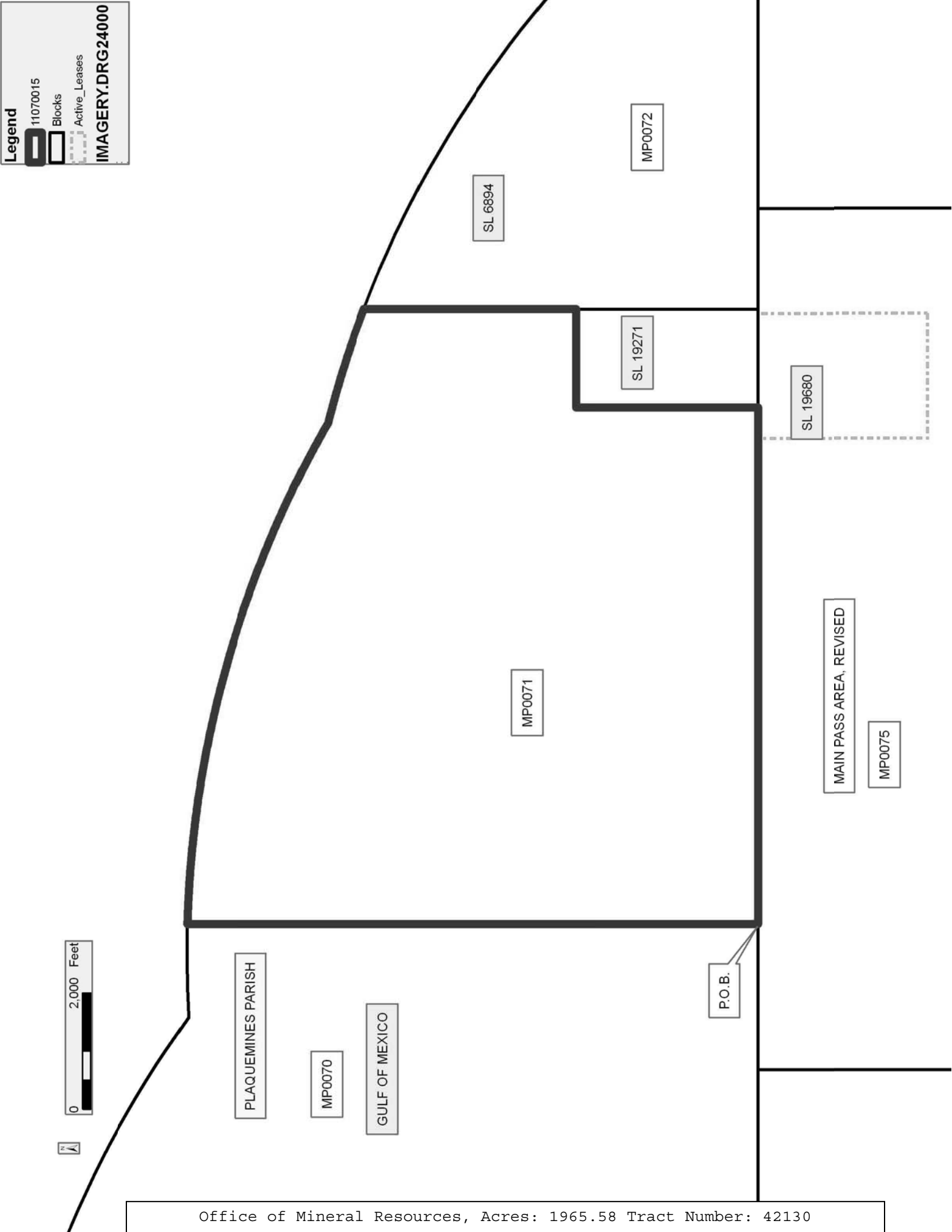
Legend

11070015

Blocks

Active_Leases

IMAGERY.DRG24000



TRACT 42131 - Portion of Block 75, Main Pass Area, Revised, Plaquemines Parish, Louisiana

The beds and bottoms of all water bodies belonging to the State of Louisiana located in Block 75, Main Pass Area, Revised, together with any present lands formed by accretion to the shoreline or islands formed therein, located in Plaquemines Parish, Louisiana, owned by and not presently under mineral lease as of July 13, 2011, from the State of Louisiana, the geographical area of which is more fully described as follows: Beginning at a point being the Southeast corner of Main Pass Area, Revised Block 75, having Coordinates of X = 2,763,508.00 and Y = 200,214.00; thence West 8,130.55 feet to a point having Coordinates of X = 2,755,377.45 and Y = 200,214.00; thence North 14,758.00 feet to a point having Coordinates of X = 2,755,377.45 and Y = 214,972.00; thence East 4,193.05 feet to a point having Coordinates of X = 2,759,570.50 and Y = 214,972.00, being the Northwest corner of State Lease No. 19680; thence along the boundary of said State Lease No. 19680 the following courses: South 2,893.81 feet to a point having Coordinates of X = 2,759,570.50 and Y = 212,078.19 and East 2,137.50 feet to a point on the Western boundary of State Lease No. 19272 having Coordinates of X = 2,761,708.00 and Y = 212,078.19; thence along the boundary of said State Lease No. 19272 the following courses: South 2,404.50 feet to a point having Coordinates of X = 2,761,708.00 and Y = 209,673.69, North 60 degrees 44 minutes 06 seconds East 458.99 feet to a point having Coordinates of X = 2,762,108.41 and Y = 209,898.06, North 46 degrees 53 minutes 26 seconds East 252.08 feet to a point having Coordinates of X = 2,762,292.44 and Y = 210,070.33 and South 71 degrees 45 minutes 32 seconds East 1,279.88 feet to a point having Coordinates of X = 2,763,508.00 and Y = 209,669.71; thence South 9,455.71 feet along the Western boundary of State Lease No. 6706, as amended to the point of beginning, containing approximately **2,401.49 acres**, all as more particularly outlined on a plat on file in the Office of Mineral Resources, Department of Natural Resources. All bearings, distances and coordinates are based on Louisiana Coordinate System of 1927, (North or South Zone).

NOTE: The above description of the Tract nominated for lease has been provided and corrected, where required, exclusively by the nomination party. Any mineral lease selected from this Tract and awarded by the Louisiana State Mineral and Energy Board shall be without warranty of any kind, either express, implied, or statutory, including, but not limited to, the implied warranties of merchantability and fitness for a particular purpose. Should the mineral lease awarded by the Louisiana State Mineral and Energy Board be subsequently modified, cancelled or abrogated due to the existence of conflicting leases, operating agreements, private claims or other future obligations or conditions which may affect all or any portion of the leased Tract, it shall not relieve the Lessee of the obligation to pay any bonus due thereon to the Louisiana State Mineral and Energy Board, nor shall the Louisiana State Mineral and Energy Board be obligated to refund any consideration paid by the Lessor prior to such

modification, cancellation, or abrogation, including, but not limited to, bonuses, rentals and royalties.

NOTE: The State of Louisiana does hereby reserve, and this lease shall be subject to, the imprescriptible right of surface use in the nature of a servitude in favor of the Department of Natural Resources, including its Offices and Commissions, for the sole purpose of implementing, constructing, servicing and maintaining approved coastal zone management and/or restoration projects. Utilization of any and all rights derived under this lease by the mineral lessee, its agents, successors or assigns, shall not interfere with nor hinder the reasonable surface use by the Department of Natural Resources, its Offices or Commissions, as herein above reserved.

Applicant: MERLIN OIL & GAS

Bidder	Cash Payment	Price/ Acre	Rental	Oil	Gas	Other

Legend

- 11070016
- Blocks
- Active Leases

