

**TRACT 42162 - East Feliciana and St. Helena Parishes, Louisiana**

All of the lands now or formerly constituting the beds and bottoms of all water bodies of every nature and description as to which title is vested in the State of Louisiana, together with all islands arising therein and other lands formed by accretion or by reliction, where allowed by law, excepting tax adjudicated lands, and not presently under mineral lease on July 13, 2011, situated in East Feliciana and St. Helena Parishes, Louisiana, and more particularly described as follows: Beginning at a point on the Southern boundary of State Lease No. 20550 having Coordinates of X = 2,149,554.00 and Y = 831,512.00; thence East 2,600.00 feet along the Southern boundary of said State Lease No. 20550 to a point having Coordinates of X = 2,152,154.00 and Y = 831,512.00; thence South 214.30 feet to a point having Coordinates of X = 2,152,154.00 and Y = 831,297.70; thence West 584.99 feet to the Northeast corner of State Lease No. 19502, as amended, having Coordinates of X = 2,151,569.01 and Y = 831,297.70; thence along the boundary of said State Lease No. 19502 the following courses: West 1,968.52 feet and South 3,286.03 feet to a point having Coordinates of X = 2,149,600.49 and Y = 828,011.67; thence West 46.49 feet to a point on the East boundary of State Lease No. 20537 having Coordinates of X = 2,149,554.00 and Y = 828,011.67; thence North 3,000.33 feet along the East boundary of said State Lease No. 20537 to its Northernmost Northeast corner, also being the Southernmost Southeast corner of said State Lease No. 20550 having Coordinates of X = 2,149,554.00 and Y = 831,012.00; thence North 500.00 feet along the boundary of said State Lease No. 20550 to the point of beginning, containing approximately **2 acres**, all as more particularly outlined on a plat on file in the Office of Mineral Resources, Department of Natural Resources. All bearings, distances and coordinates are based on Louisiana Coordinate System of 1927, (North or South Zone), where applicable.

NOTE: The above description of the Tract nominated for lease has been provided and corrected, where required, exclusively by the nomination party. Any mineral lease selected from this Tract and awarded by the Louisiana State Mineral and Energy Board shall be without warranty of any kind, either express, implied, or statutory, including, but not limited to, the implied warranties of merchantability and fitness for a particular purpose. Should the mineral lease awarded by the Louisiana State Mineral and Energy Board be subsequently modified, cancelled or abrogated due to the existence of conflicting leases, operating agreements, private claims or other future obligations or conditions which may affect all or any portion of the leased Tract, it shall not relieve the Lessee of the obligation to pay any bonus due thereon to the Louisiana State Mineral and Energy Board, nor shall the Louisiana State Mineral and Energy Board be obligated to refund any consideration paid by the Lessor prior to such modification, cancellation, or abrogation, including, but not limited to, bonuses, rentals and royalties.

NOTE: The above Tract is located upon a restricted scenic river and all operations in this area must be conducted in strict conformity with the regulations of the Corps of Engineers, U.S. Army.

Applicant: CHUCK KEETON

Bidder	Cash Payment	Price/ Acre	Rental	Oil	Gas	Other



**TRACT 42163 - Beauregard Parish, Louisiana**

All of the lands now or formerly constituting the beds and bottoms of all water bodies of every nature and description the title of which vests in the State of Louisiana, together with all islands arising therein and other lands formed by accretion or by reliction, where allowed by law, excepting tax adjudicated lands, and not presently under mineral lease on July 13, 2011, situated in Beauregard Parish, Louisiana, and more particularly described as follows: Beginning at a point having Coordinates of X = 1,296,200.00 and Y = 782,210.00; thence North 21 degrees 53 minutes 49 seconds West 1,600.00 feet to a point having Coordinates of X = 1,295,603.30 and Y = 783,694.57; thence North 68 degrees 06 minutes 11 seconds East 4,100.00 feet to a point having Coordinates of X = 1,299,407.50 and Y = 785,223.62; thence South 21 degrees 53 minutes 49 seconds East 1,600.00 feet to a point having Coordinates of X = 1,300,004.21 and Y = 783,739.05; thence South 68 degrees 06 minutes 11 seconds West 4,100.00 feet to the point of beginning, containing approximately **16 acres, LESS AND EXCEPT** that portion thereof, if any, located West of the boundary line between the States of Texas and Louisiana as determined by the report of the Special Master and adjudicated by the Supreme Court of the United States in litigation styled **Texas v. Louisiana, et al No. 36 Original**, or as otherwise approved by said court, all as more particularly outlined on a plat on file in the Office of Mineral Resources, Department of Natural Resources. All bearings, distances and coordinates are based on Louisiana Coordinate System of 1927, (North or South Zone), where applicable.

NOTE: The above description of the Tract nominated for lease has been provided and corrected, where required, exclusively by the nomination party. Any mineral lease selected from this Tract and awarded by the Louisiana State Mineral and Energy Board shall be without warranty of any kind, either express, implied, or statutory, including, but not limited to, the implied warranties of merchantability and fitness for a particular purpose. Should the mineral lease awarded by the Louisiana State Mineral and Energy Board be subsequently modified, cancelled or abrogated due to the existence of conflicting leases, operating agreements, private claims or other future obligations or conditions which may affect all or any portion of the leased Tract, it shall not relieve the Lessee of the obligation to pay any bonus due thereon to the Louisiana State Mineral and Energy Board, nor shall the Louisiana State Mineral and Energy Board be obligated to refund any consideration paid by the Lessor prior to such modification, cancellation, or abrogation, including, but not limited to, bonuses, rentals and royalties.

Applicant: XID EXPLORATION

Bidder	Cash Payment	Price/ Acre	Rental	Oil	Gas	Other



Legend

11070081

IMAGERY.DOQQ\_2008\_1M\_CIR

BEAUREGARD PARISH

T3S - R12W

P.O.B.

SABINE RIVER

0 2,000 Feet

**TRACT 42164 - Beauregard Parish, Louisiana**

All of the lands now or formerly constituting the beds and bottoms of all water bodies of every nature and description the title of which vests in the State of Louisiana, together with all islands arising therein and other lands formed by accretion or by reliction, where allowed by law, excepting tax adjudicated lands, and not presently under mineral lease on July 13, 2011, situated in Beauregard Parish, Louisiana, and more particularly described as follows: Beginning at a point having Coordinates of X = 1,295,923.94 and Y = 782,896.83; thence South 68 degrees 06 minutes 11 seconds West 4,100.00 feet to a point having Coordinates of X = 1,292,119.73 and Y = 781,367.77; thence North 21 degrees 53 minutes 49 seconds West 1,600.00 feet to a point having Coordinates of X = 1,291,523.03 and Y = 782,852.34; thence North 68 degrees 06 minutes 11 seconds East 4,100.00 feet to a point having Coordinates of X = 1,295,327.24 and Y = 784,381.39; thence South 21 degrees 53 minutes 49 seconds East 1,600.00 feet to the point of beginning, containing approximately **22 acres, LESS AND EXCEPT** that portion thereof, if any, located West of the boundary line between the States of Texas and Louisiana as determined by the report of the Special Master and adjudicated by the Supreme Court of the United States in litigation styled **Texas v. Louisiana, et al No. 36 Original**, or as otherwise approved by said court, all as more particularly outlined on a plat on file in the Office of Mineral Resources, Department of Natural Resources. All bearings, distances and coordinates are based on Louisiana Coordinate System of 1927, (North or South Zone), where applicable.

NOTE: The above description of the Tract nominated for lease has been provided and corrected, where required, exclusively by the nomination party. Any mineral lease selected from this Tract and awarded by the Louisiana State Mineral and Energy Board shall be without warranty of any kind, either express, implied, or statutory, including, but not limited to, the implied warranties of merchantability and fitness for a particular purpose. Should the mineral lease awarded by the Louisiana State Mineral and Energy Board be subsequently modified, cancelled or abrogated due to the existence of conflicting leases, operating agreements, private claims or other future obligations or conditions which may affect all or any portion of the leased Tract, it shall not relieve the Lessee of the obligation to pay any bonus due thereon to the Louisiana State Mineral and Energy Board, nor shall the Louisiana State Mineral and Energy Board be obligated to refund any consideration paid by the Lessor prior to such modification, cancellation, or abrogation, including, but not limited to, bonuses, rentals and royalties.

Applicant: XID EXPLORATION

Bidder	Cash Payment	Price/ Acre	Rental	Oil	Gas	Other



Legend

11070080

IMAGERY.DOQQ\_2008\_1M\_CIR

0 2,000 Feet



SABINE RIVER

T3S - R12W

BEAUREGARD PARISH

P.O.B.

**TRACT 42165 - Allen Parish, Louisiana**

All of the lands now or formerly constituting the beds and bottoms of all water bodies of every nature and description as to which title is vested in the State of Louisiana, together with all islands arising therein and other lands formed by accretion or by reliction, where allowed by law, excepting tax adjudicated lands, and not presently under mineral lease on July 13, 2011, situated in Allen Parish, Louisiana, and more particularly described as follows: Beginning at a point having Coordinates of X = 1,497,800.00 and Y = 695,060.00; thence East 6,000.00 feet to a point having Coordinates of X = 1,503,800.00 and Y = 695,060.00; thence South 5,210.00 feet to the Northeast corner of State Lease No. 20494 having Coordinates of X = 1,503,800.00 and Y = 689,850.00; thence West 6,000.00 feet along the North boundary of said State Lease No. 20494 to its Northwest corner having Coordinates of X = 1,497,800.00 and Y = 689,850.00; thence North 5,210.00 feet to the point of beginning, containing approximately **27 acres**, all as more particularly outlined on a plat on file in the Office of Mineral Resources, Department of Natural Resources. All bearings, distances and coordinates are based on Louisiana Coordinate System of 1927, (North or South Zone), where applicable.

NOTE: The above description of the Tract nominated for lease has been provided and corrected, where required, exclusively by the nomination party. Any mineral lease selected from this Tract and awarded by the Louisiana State Mineral and Energy Board shall be without warranty of any kind, either express, implied, or statutory, including, but not limited to, the implied warranties of merchantability and fitness for a particular purpose. Should the mineral lease awarded by the Louisiana State Mineral and Energy Board be subsequently modified, cancelled or abrogated due to the existence of conflicting leases, operating agreements, private claims or other future obligations or conditions which may affect all or any portion of the leased Tract, it shall not relieve the Lessee of the obligation to pay any bonus due thereon to the Louisiana State Mineral and Energy Board, nor shall the Louisiana State Mineral and Energy Board be obligated to refund any consideration paid by the Lessor prior to such modification, cancellation, or abrogation, including, but not limited to, bonuses, rentals and royalties.

NOTE: The above Tract is located upon a restricted scenic river and all operations in this area must be conducted in strict conformity with the regulations of the Corps of Engineers, U.S. Army.

Applicant: ORBIT ENERGY, INC.

Bidder	Cash Payment	Price/ Acre	Rental	Oil	Gas	Other

Legend

11070027

Active\_Leases

IMAGERY.DOQQ\_2008\_1M\_CIR

0 2,000 Feet

ALLEN PARISH

T5S - R5W

P.O.B.

T6S - R6W

WHISKEY CHITTO CREEK

SL 20494

Office of Mineral Resources, Acres: 27 Tract Number: 42165

**TRACT 42166 - Allen Parish, Louisiana**

All of the lands now or formerly constituting the beds and bottoms of all water bodies of every nature and description as to which title is vested in the State of Louisiana, together with all islands arising therein and other lands formed by accretion or by reliction, where allowed by law, excepting tax adjudicated lands, and not presently under mineral lease on July 13, 2011, situated in Allen Parish, Louisiana, and more particularly described as follows: Beginning at a point having Coordinates of X = 1,514,450.00 and Y = 694,550.00; thence East 11,000.00 feet to a point having Coordinates of X = 1,525,450.00 and Y = 694,550.00; thence South 5,300.00 feet to the Northeast corner of State Lease No. 20495 having Coordinates of X = 1,525,450.00 and Y = 689,250.00; thence West 11,000.00 feet along the North boundary of said State Lease No. 20495 to its Northwest corner having Coordinates of X = 1,514,450.00 and Y = 689,250.00; thence North 5,300.00 feet to the point of beginning, containing approximately **27 acres**, all as more particularly outlined on a plat on file in the Office of Mineral Resources, Department of Natural Resources. All bearings, distances and coordinates are based on Louisiana Coordinate System of 1927, (North or South Zone), where applicable.

NOTE: The above description of the Tract nominated for lease has been provided and corrected, where required, exclusively by the nomination party. Any mineral lease selected from this Tract and awarded by the Louisiana State Mineral and Energy Board shall be without warranty of any kind, either express, implied, or statutory, including, but not limited to, the implied warranties of merchantability and fitness for a particular purpose. Should the mineral lease awarded by the Louisiana State Mineral and Energy Board be subsequently modified, cancelled or abrogated due to the existence of conflicting leases, operating agreements, private claims or other future obligations or conditions which may affect all or any portion of the leased Tract, it shall not relieve the Lessee of the obligation to pay any bonus due thereon to the Louisiana State Mineral and Energy Board, nor shall the Louisiana State Mineral and Energy Board be obligated to refund any consideration paid by the Lessor prior to such modification, cancellation, or abrogation, including, but not limited to, bonuses, rentals and royalties.

Bidder	Cash Payment	Price/Acre	Rental	Oil	Gas	Other

Applicant: ORBIT ENERGY, INC.



Legend

11070026

Active\_Leases

IMAGERY.DOQQ\_2008\_1M\_CIR





**TRACT 42167 - Allen Parish, Louisiana**

All of the lands now or formerly constituting the beds and bottoms of all water bodies of every nature and description as to which title is vested in the State of Louisiana, together with all islands arising therein and other lands formed by accretion or by reliction, where allowed by law, excepting tax adjudicated lands, and not presently under mineral lease on July 13, 2011, situated in Allen Parish, Louisiana, and more particularly described as follows: Beginning at a point having Coordinates of X = 1,497,700.00 and Y = 673,550.00; thence East 100.00 feet to the Southwest corner of State Lease No. 20494 having Coordinates of X = 1,497,800.00 and Y = 673,550.00; thence East 5,750.00 feet along the South boundary of said State Lease No. 20494 to a point having Coordinates of X = 1,503,550.00 and Y = 673,550.00; thence South 5,050.00 feet to a point having Coordinates of X = 1,503,550.00 and Y = 668,500.00; thence West 5,850.00 feet to a point having Coordinates of X = 1,497,700.00 and Y = 668,500.00; thence North 5,050.00 feet to the point of beginning, containing approximately **18 acres**, all as more particularly outlined on a plat on file in the Office of Mineral Resources, Department of Natural Resources. All bearings, distances and coordinates are based on Louisiana Coordinate System of 1927, (North or South Zone), where applicable.

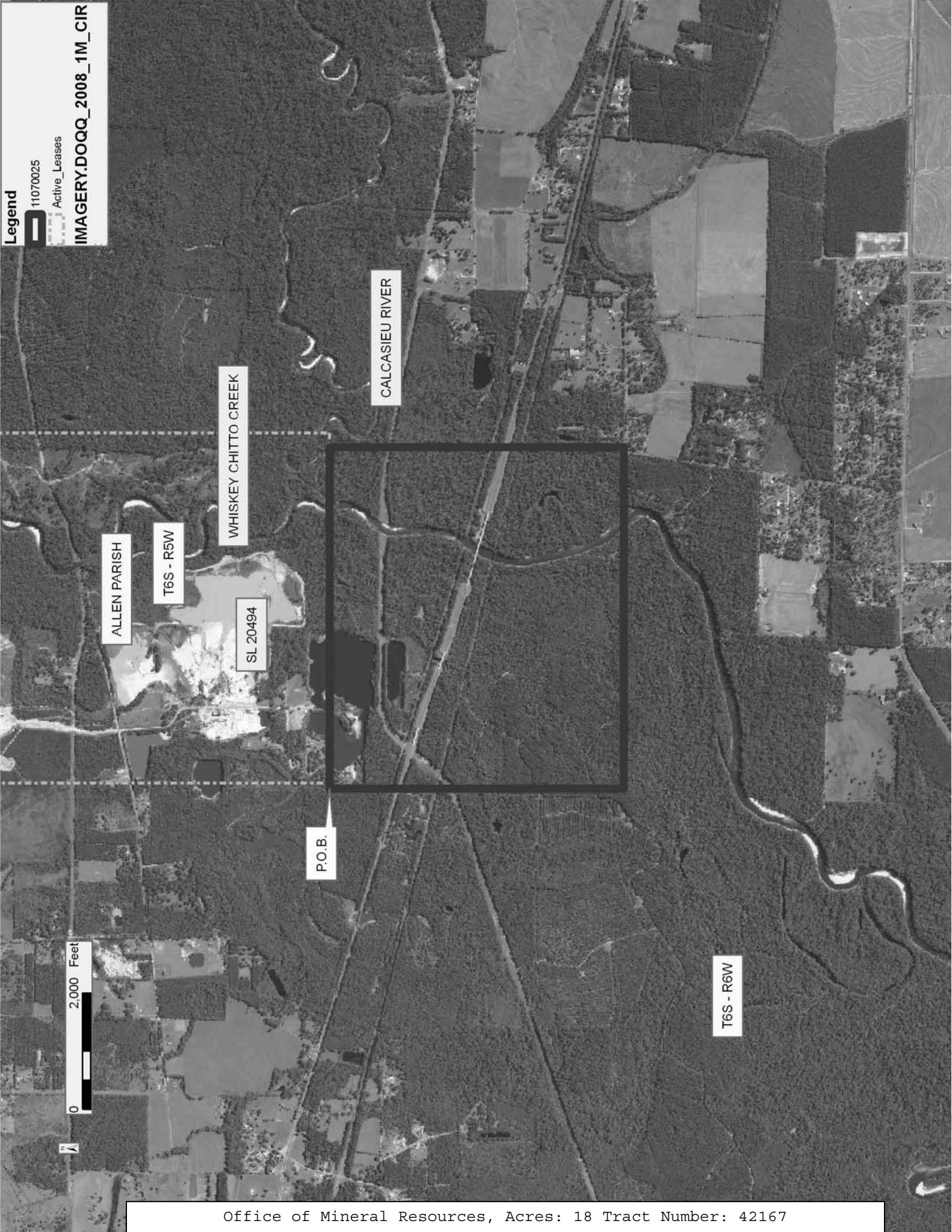
NOTE: The above description of the Tract nominated for lease has been provided and corrected, where required, exclusively by the nomination party. Any mineral lease selected from this Tract and awarded by the Louisiana State Mineral and Energy Board shall be without warranty of any kind, either express, implied, or statutory, including, but not limited to, the implied warranties of merchantability and fitness for a particular purpose. Should the mineral lease awarded by the Louisiana State Mineral and Energy Board be subsequently modified, cancelled or abrogated due to the existence of conflicting leases, operating agreements, private claims or other future obligations or conditions which may affect all or any portion of the leased Tract, it shall not relieve the Lessee of the obligation to pay any bonus due thereon to the Louisiana State Mineral and Energy Board, nor shall the Louisiana State Mineral and Energy Board be obligated to refund any consideration paid by the Lessor prior to such modification, cancellation, or abrogation, including, but not limited to, bonuses, rentals and royalties.

NOTE: The above Tract is located upon a restricted scenic river and all operations in this area must be conducted in strict conformity with the regulations of the Corps of Engineers, U.S. Army.

Applicant: ORBIT ENERGY, INC.

Bidder	Cash Payment	Price/ Acre	Rental	Oil	Gas	Other

**Legend**  
11070025  
Active Leases  
IMAGERY.DOQQ\_2008\_1M\_CIR



**TRACT 42168 - Acadia Parish, Louisiana**

All of the lands now or formerly constituting the beds and bottoms of all water bodies of every nature and description as to which title is vested in the State of Louisiana, together with all islands arising therein and other lands formed by accretion or by reliction, where allowed by law, excepting tax adjudicated lands, and not presently under mineral lease on July 13, 2011, situated in Acadia Parish, Louisiana, and more particularly described as follows: Beginning at a point having Coordinates of X = 1,653,946.84 and Y = 650,217.46; thence South 89 degrees 52 minutes 05 seconds East 5,423.99 feet to a point having Coordinates of X = 1,659,370.82 and Y = 650,204.96; thence South 00 degrees 40 minutes 48 seconds West 5,308.00 feet to a point having Coordinates of X = 1,659,307.82 and Y = 644,897.33; thence North 89 degrees 50 minutes 18 seconds West 5,361.00 feet to a point having Coordinates of X = 1,653,946.84 and Y = 644,912.46; thence North 5,305.00 feet to the Point of Beginning, containing approximately **6 acres**, all as more particularly outlined on a plat on file in the Office of Mineral Resources, Department of Natural Resources. All bearings, distances and coordinates are based on Louisiana Coordinate System of 1927, (North or South Zone), where applicable.

NOTE: The above description of the Tract nominated for lease has been provided and corrected, where required, exclusively by the nomination party. Any mineral lease selected from this Tract and awarded by the Louisiana State Mineral and Energy Board shall be without warranty of any kind, either express, implied, or statutory, including, but not limited to, the implied warranties of merchantability and fitness for a particular purpose. Should the mineral lease awarded by the Louisiana State Mineral and Energy Board be subsequently modified, cancelled or abrogated due to the existence of conflicting leases, operating agreements, private claims or other future obligations or conditions which may affect all or any portion of the leased Tract, it shall not relieve the Lessee of the obligation to pay any bonus due thereon to the Louisiana State Mineral and Energy Board, nor shall the Louisiana State Mineral and Energy Board be obligated to refund any consideration paid by the Lessor prior to such modification, cancellation, or abrogation, including, but not limited to, bonuses, rentals and royalties.

Bidder	Cash Payment	Price/ Acre	Rental	Oil	Gas	Other

Applicant: ORBIT ENERGY, INC.



**TRACT 42169 - Acadia and Jefferson Davis Parishes, Louisiana**

All of the lands now or formerly constituting the beds and bottoms of all water bodies of every nature and description as to which title is vested in the State of Louisiana, together with all islands arising therein and other lands formed by accretion or by reliction, where allowed by law, excepting tax adjudicated lands, and not presently under mineral lease on July 13, 2011, situated in Acadia and Jefferson Davis Parishes, Louisiana, and more particularly described as follows: Beginning at a point having Coordinates of X = 1,597,772.21 and Y = 647,804.24; thence South 70 degrees 18 minutes 36 seconds East 6,577.00 feet to a point having Coordinates of X = 1,603,964.65 and Y = 645,588.24; thence South 10 degrees 33 minutes 14 seconds West 7,771.00 feet to a point having Coordinates of X = 1,602,541.31 and Y = 637,948.70; thence North 70 degrees 18 minutes 36 seconds West 6,577.00 feet to a point having Coordinates of X = 1,596,348.87 and Y = 640,164.70; thence North 10 degrees 33 minutes 14 seconds East 7,771.00 feet to the Point of Beginning, containing approximately **25 acres**, all as more particularly outlined on a plat on file in the Office of Mineral Resources, Department of Natural Resources. All bearings, distances and coordinates are based on Louisiana Coordinate System of 1927, (North or South Zone), where applicable.

NOTE: The above description of the Tract nominated for lease has been provided and corrected, where required, exclusively by the nomination party. Any mineral lease selected from this Tract and awarded by the Louisiana State Mineral and Energy Board shall be without warranty of any kind, either express, implied, or statutory, including, but not limited to, the implied warranties of merchantability and fitness for a particular purpose. Should the mineral lease awarded by the Louisiana State Mineral and Energy Board be subsequently modified, cancelled or abrogated due to the existence of conflicting leases, operating agreements, private claims or other future obligations or conditions which may affect all or any portion of the leased Tract, it shall not relieve the Lessee of the obligation to pay any bonus due thereon to the Louisiana State Mineral and Energy Board, nor shall the Louisiana State Mineral and Energy Board be obligated to refund any consideration paid by the Lessor prior to such modification, cancellation, or abrogation, including, but not limited to, bonuses, rentals and royalties.

Bidder	Cash Payment	Price/ Acre	Rental	Oil	Gas	Other



Applicant: ORBIT ENERGY, INC.



Legend

11070023

Counties

IMAGERY.DOQQ\_2008\_1M\_CIR

ACADIA PARISH

T7S - R2W

P.O.B.

BAYOU NEZPIQUE

JEFFERSON DAVIS PARISH

T7S - R3W

**TRACT 42170 - Acadia Parish, Louisiana**

All of the lands now or formerly constituting the beds and bottoms of all water bodies of every nature and description as to which title is vested in the State of Louisiana, together with all islands arising therein and other lands formed by accretion or by reliction, where allowed by law, excepting tax adjudicated lands, and not presently under mineral lease on July 13, 2011, situated in Acadia Parish, Louisiana, and more particularly described as follows: Beginning at a point having Coordinates of X = 1,648,544.86 and Y = 644,929.33; thence South 89 degrees 49 minutes 16 seconds East 5,402.00 feet to a point having Coordinates of X = 1,653,946.84 and Y = 644,912.46; thence South 00 degrees 48 minutes 13 seconds West 4,858.00 feet to a point having Coordinates of X = 1,653,878.70 and Y = 640,054.94; thence North 89 degrees 49 minutes 16 seconds West 5,402.00 feet to a point having Coordinates of X = 1,648,476.73 and Y = 640,071.80; thence North 00 degrees 48 minutes 13 seconds East approximately 1,259 feet to a point of intersection with the Eastern boundary of State Lease No. 7964, as amended; thence Northeasterly along the Eastern boundary of said State Lease No. 7964 to its Northeast corner; thence Westerly approximately 474 feet along the Northern boundary of said State Lease No. 7964 to a point of intersection with a line which bears South 00 degrees 48 minutes 13 seconds West from the point of beginning; thence North 00 degrees 48 minutes 13 seconds East approximately 2,276 feet to the point of beginning, containing approximately **7 acres, LESS AND EXCEPT** that portion, if any, of State Lease No. 7964, as amended, all as more particularly outlined on a plat on file in the Office of Mineral Resources, Department of Natural Resources. All bearings, distances and coordinates are based on Louisiana Coordinate System of 1927, (North or South Zone), where applicable.

NOTE: The above description of the Tract nominated for lease has been provided and corrected, where required, exclusively by the nomination party. Any mineral lease selected from this Tract and awarded by the Louisiana State Mineral and Energy Board shall be without warranty of any kind, either express, implied, or statutory, including, but not limited to, the implied warranties of merchantability and fitness for a particular purpose. Should the mineral lease awarded by the Louisiana State Mineral and Energy Board be subsequently modified, cancelled or abrogated due to the existence of conflicting leases, operating agreements, private claims or other future obligations or conditions which may affect all or any portion of the leased Tract, it shall not relieve the Lessee of the obligation to pay any bonus due thereon to the Louisiana State Mineral and Energy Board, nor shall the Louisiana State Mineral and Energy Board be obligated to refund any consideration paid by the Lessor prior to such modification, cancellation, or abrogation, including, but not limited to, bonuses, rentals and royalties.

Applicant: ORBIT ENERGY, INC.

Bidder	Cash Payment	Price/ Acre	Rental	Oil	Gas	Other

Legend

11070024

Active Leases

IMAGERY.DOQQ\_2008\_1M\_CIR

An aerial photograph of a rural landscape, likely in Louisiana, showing a mix of agricultural fields, forested areas, and some industrial structures. A large black rectangular boundary is drawn over a central portion of the map, enclosing a mostly forested area. To the south of this rectangle, a dashed line boundary follows a winding path. Several labels are placed on the map: 'ACADIA PARISH' is on the left; 'T7S - R1W' is below it; 'BAYOU MALLET' is to the right of the black rectangle; 'P.O.B.' is at the bottom left of the black rectangle; and 'SL 7964' is to the right of the dashed line. In the bottom left corner, there is a scale bar labeled '0' to '2,000 Feet' and a north arrow pointing upwards.

Office of Mineral Resources, Acres: 7 Tract Number: 42170

**TRACT 42171 - Calcasieu Parish, Louisiana**

All of the lands now or formerly constituting the beds and bottoms of all water bodies of every nature and description as to which title is vested in the State of Louisiana, together with all islands arising therein and other lands formed by accretion or by reliction, where allowed by law, excepting tax adjudicated lands, and not presently under mineral lease on July 13, 2011, situated in Calcasieu Parish, Louisiana, and more particularly described as follows: Beginning at a point having Coordinates of X = 1,430,245.95 and Y = 599,960.91; thence East 3,933.60 feet to the Northwest corner of the Western portion of State Lease No. 15691, as amended, having Coordinates of X = 1,434,179.55 and Y = 599,960.91; thence along the boundary of the Western portion of said State Lease No. 15691, as amended, the following courses: South 00 degrees 48 minutes 16 seconds West 2,400.00 feet to a point having Coordinates of X = 1,434,145.85 and Y = 597,561.15; South 89 degrees 11 minutes 44 seconds East 1,450.00 feet to a point having Coordinates of X = 1,435,595.71 and Y = 597,540.79; and North 00 degrees 48 minutes 16 seconds East 2,400.00 feet to its Northeast corner having Coordinates of X = 1,435,629.41 and Y = 599,940.55; thence East 2,325.66 feet to a point on the Western boundary of the Eastern portion of said State Lease No. 15691, as amended, having Coordinates of X = 1,437,955.07 and Y = 599,940.55; thence along the boundary of the Eastern portion of said State Lease No. 15691, as amended, the following courses: South 20 degrees 14 minutes 02 seconds East 342.19 feet to a point having Coordinates of X = 1,438,073.42 and Y = 599,619.48; South 13 degrees 17 minutes 48 seconds East 89.05 feet to a point having Coordinates of X = 1,438,093.90 and Y = 599,532.82; East 1,577.88 feet to a point having Coordinates of X = 1,439,671.78 and Y = 599,532.82; and North 13 degrees 16 minutes 37 seconds East 418.93 feet to a point having Coordinates of X = 1,439,767.99 and Y = 599,940.55; thence East 5,932.01 feet to a point having Coordinates of X = 1,445,700.00 and Y = 599,940.55; thence South 4,621.13 feet to a point having Coordinates of X = 1,445,700.00 and Y = 595,319.42; thence North 89 degrees 38 minutes 06 seconds West 12,132.43 feet to a point on the Southern boundary of State Lease No. 20261, as amended, having Coordinates of X = 1,433,567.81 and Y = 595,396.71; thence along the boundary of State Lease No. 20261, as amended, the following courses: North 2,172.54 feet to a point having Coordinates of X = 1,433,567.81 and Y = 597,569.26; North 34 degrees 33 minutes 07 seconds West 1,203.86 feet to a point having Coordinates of X = 1,432,885.04 and Y = 598,560.77; South 00 degrees 47 minutes 27 seconds West 155.32 feet to a point having Coordinates of X = 1,432,882.89 and Y = 598,405.46; South 34 degrees 03 minutes 47 seconds West 458.01 feet to a point having Coordinates of X = 1,432,626.36 and Y = 598,026.04; South 60 degrees 48 minutes 56 seconds West 408.84 feet to a point having Coordinates of X = 1,432,269.42 and Y = 597,826.68; South 72 degrees 10 minutes 57 seconds West 662.23 feet to a point having Coordinates of X = 1,431,638.95 and Y = 597,624.05; South 46 degrees 39 minutes 14 seconds West 437.93 feet to a point having Coordinates of X = 1,431,320.48 and Y = 597,323.45; South 19 degrees 49 minutes 27 seconds West 372.21 feet to a point having Coordinates of X = 1,431,194.26 and Y = 596,973.30; South 23

degrees 06 minutes 09 seconds East 307.99 feet to a point having Coordinates of X = 1,431,315.11 and Y = 596,690.01; South 65 degrees 06 minutes 20 seconds East 292.79 feet to a point having Coordinates of X = 1,431,580.69 and Y = 596,566.76; South 60 degrees 37 minutes 16 seconds East 95.28 feet to a point having Coordinates of X = 1,431,663.72 and Y = 596,520.02; South 12 degrees 42 minutes 51 seconds East 122.98 feet to a point having Coordinates of X = 1,431,690.79 and Y = 596,400.05; and South 61 degrees 52 minutes 26 seconds East 2,128.36 feet to a point having Coordinates of X = 1,433,567.81 and Y = 595,396.71; thence South 87 degrees 25 minutes 40 seconds West 1,722.21 feet to the Northeast corner of State Lease No. 18593, as amended, having Coordinates of X = 1,431,847.34 and Y = 595,319.42; thence along the boundary of said State Lease No. 18593, as amended, the following courses: South 83 degrees 45 minutes 55 seconds West 1,304.86 feet to a point having Coordinates of X = 1,430,550.20 and Y = 595,177.71; South 403.38 feet to a point having Coordinates of X = 1,430,550.20 and Y = 594,774.33; and North 89 degrees 59 minutes 56 seconds West 237.66 feet to the Southeast corner of said State Lease No. 18560, as amended having Coordinates of X = 1,430,312.54 and Y = 594,774.33; thence along the boundary of said State Lease No. 18560, as amended, the following courses: North 20 degrees 01 minutes 28 seconds West 17.74 feet to a point having Coordinates of X = 1,430,306.47 and Y = 594,791.00; North 14 degrees 15 minutes 09 seconds West 221.41 feet to a point having Coordinates of X = 1,430,251.96 and Y = 595,005.60; and North 02 degrees 28 minutes 44 seconds West 139.00 feet to a point having Coordinates of X = 1,430,245.95 and Y = 595,144.47; thence North 4,816.44 feet to the Point of Beginning, containing approximately **62 acres**, all as more particularly outlined on a plat on file in the Office of Mineral Resources, Department of Natural Resources. All bearings, distances and coordinates are based on Louisiana Coordinate System of 1927, (North or South Zone), where applicable.

NOTE: The above description of the Tract nominated for lease has been provided and corrected, where required, exclusively by the nomination party. Any mineral lease selected from this Tract and awarded by the Louisiana State Mineral and Energy Board shall be without warranty of any kind, either express, implied, or statutory, including, but not limited to, the implied warranties of merchantability and fitness for a particular purpose. Should the mineral lease awarded by the Louisiana State Mineral and Energy Board be subsequently modified, cancelled or abrogated due to the existence of conflicting leases, operating agreements, private claims or other future obligations or conditions which may affect all or any portion of the leased Tract, it shall not relieve the Lessee of the obligation to pay any bonus due thereon to the Louisiana State Mineral and Energy Board, nor shall the Louisiana State Mineral and Energy Board be obligated to refund any consideration paid by the Lessor prior to such modification, cancellation, or abrogation, including, but not limited to, bonuses, rentals and royalties.



NOTE: The above Tract is located upon a restricted scenic river and all operations in this area must be conducted in strict conformity with the regulations of the Corps of Engineers, U.S. Army.

Applicant: WHYNOT EXPLORE

Bidder	Cash Payment	Price/ Acre	Rental	Oil	Gas	Other

