

**TRACT 42208 - De Soto and Red River Parishes, Louisiana**

All of the lands now or formerly constituting the beds and bottoms of all water bodies of every nature and description as to which title is vested in the State of Louisiana, together with all islands arising therein and other lands formed by accretion or by reliction, where allowed by law, excepting tax adjudicated lands, and not presently under mineral lease on August 10, 2011, situated in De Soto and Red River Parishes, Louisiana, and more particularly described as follows: Beginning at the Westernmost Southwest corner of State Lease No. 19834 having Coordinates of X = 1,693,000.00 and Y = 516,172.00; thence West 2,800.00 feet to the Northeast corner of State Lease No. 20154 having Coordinates of X = 1,690,200.00 and Y = 516,172.00; thence along the boundary of said State Lease No. 20154 the following courses: West 5,440.00 feet to its Northwest corner having Coordinates of X = 1,684,760.00 and Y = 516,172.00 and South 1,496.00 feet to its Southwest corner having Coordinates of X = 1,684,760.00 and Y = 514,676.00; thence South 176.00 feet to an Eastern corner of State Lease No. 19835 having Coordinates of X = 1,684,760.00 and Y = 514,500.00; thence along the boundary of said State Lease No. 19835 the following courses: West 2,960.00 feet to a corner having Coordinates of X = 1,681,800.00 and Y = 514,500.00; North 5,600.00 feet to a corner having Coordinates of X = 1,681,800.00 and Y = 520,100.00 and East 11,200.00 feet to its Easternmost Southeast corner, being a point located on the Western boundary of said State Lease No. 19834 having Coordinates of X = 1,693,000.00 and Y = 520,100.00; thence South 3,928.00 feet along the Western boundary of said State Lease No. 19834 to the point of beginning, containing approximately **14 acres**, all as more particularly outlined on a plat on file in the Office of Mineral Resources, Department of Natural Resources. All bearings, distances and coordinates are based on Louisiana Coordinate System of 1927, (North or South Zone), where applicable.

NOTE: The above description of the Tract nominated for lease has been provided and corrected, where required, exclusively by the nomination party. Any mineral lease selected from this Tract and awarded by the Louisiana State Mineral and Energy Board shall be without warranty of any kind, either express, implied, or statutory, including, but not limited to, the implied warranties of merchantability and fitness for a particular purpose. Should the mineral lease awarded by the Louisiana State Mineral and Energy Board be subsequently modified, cancelled or abrogated due to the existence of conflicting leases, operating agreements, private claims or other future obligations or conditions which may affect all or any portion of the leased Tract, it shall not relieve the Lessee of the obligation to pay any bonus due thereon to the Louisiana State Mineral and Energy Board, nor shall the Louisiana State Mineral and Energy Board be obligated to refund any consideration paid by the Lessor prior to such modification, cancellation, or abrogation, including, but not limited to, bonuses, rentals and royalties.

NOTE: This tract is located in T13N, R11W Red River Bull Bayou Oil & Gas Field, Red River Parish, Louisiana. Portions of this tract are included in

the Office of Conservation units created for the HA RB SU67 and the HA RA SU56 under Order 109-X-66 effective date 10/13/2009 and the HA RB SUUU under Order 109-X-60 effective date 08/18/2009. The unit well for the HA RB SU67 was completed on 3/15/2011 and tested at 15,360 mcf/d. The unit well for the HA RB SUUU began producing 6/1/2010 with a current total of 1,783 MMCF of gas. Any royalties attributable to this tract shall be from first date of production.

Applicant: STAFF OFFICE OF MINERAL RESOURCES

Bidder	Cash Payment	Price/Acre	Rental	Oil	Gas	Other



Legend

11080003

Active\_Leases

Counties

IMAGERY.DOQQ\_2004\_1M

0 2,000 Feet

RED RIVER PARISH

T13N - R11W

BAYOU PIERRE

GRAND BAYOU

DE SOTO PARISH

SL 19835

SL 19834

SL 20154

SL 18372

P.O.B.



**TRACT 42209 - De Soto and Red River Parishes, Louisiana**

All of the lands now or formerly constituting the beds and bottoms of all water bodies of every nature and description as to which title is vested in the State of Louisiana, together with all islands arising therein and other lands formed by accretion or by reliction, where allowed by law, excepting tax adjudicated lands, and not presently under mineral lease on August 10, 2011, situated in De Soto and Red River Parishes, Louisiana, and more particularly described as follows: Beginning at the Southeast corner of State Lease No. 20156 having Coordinates of X = 1,724,065.00 and Y = 477,365.00; thence East 5,385.00 feet to the Southwest corner of State Lease No. 20114 having Coordinates of X = 1,729,450.00 and Y = 477,365.00; thence East 150.00 feet along the South boundary of said State Lease No. 20114 to a point having Coordinates of X = 1,729,600.00 and Y = 477,365.00; thence South 5,303.28 feet to a point on the North boundary of State Lease No. 19839, as amended, having Coordinates of X = 1,729,600.00 and Y = 472,061.72; thence along the boundary of said State Lease No. 19839 the following courses: North 88 degrees 14 minutes 19 seconds West 66.19 feet to its Northwest corner having Coordinates of X = 1,729,533.84 and Y = 472,063.75 and South 00 degrees 53 minutes 19 seconds West 143.77 feet to a point on its West boundary having Coordinates of X = 1,729,531.61 and Y = 471,920.00; thence West 5,466.61 feet to a point having Coordinates of X = 1,724,065.00 and Y = 471,920.00; thence North 5,445.00 feet to the point of beginning, containing approximately **20 acres**, all as more particularly outlined on a plat on file in the Office of Mineral Resources, Department of Natural Resources. All bearings, distances and coordinates are based on Louisiana Coordinate System of 1927, (North or South Zone), where applicable.

NOTE: The above description of the Tract nominated for lease has been provided and corrected, where required, exclusively by the nomination party. Any mineral lease selected from this Tract and awarded by the Louisiana State Mineral and Energy Board shall be without warranty of any kind, either express, implied, or statutory, including, but not limited to, the implied warranties of merchantability and fitness for a particular purpose. Should the mineral lease awarded by the Louisiana State Mineral and Energy Board be subsequently modified, cancelled or abrogated due to the existence of conflicting leases, operating agreements, private claims or other future obligations or conditions which may affect all or any portion of the leased Tract, it shall not relieve the Lessee of the obligation to pay any bonus due thereon to the Louisiana State Mineral and Energy Board, nor shall the Louisiana State Mineral and Energy Board be obligated to refund any consideration paid by the Lessor prior to such modification, cancellation, or abrogation, including, but not limited to, bonuses, rentals and royalties.

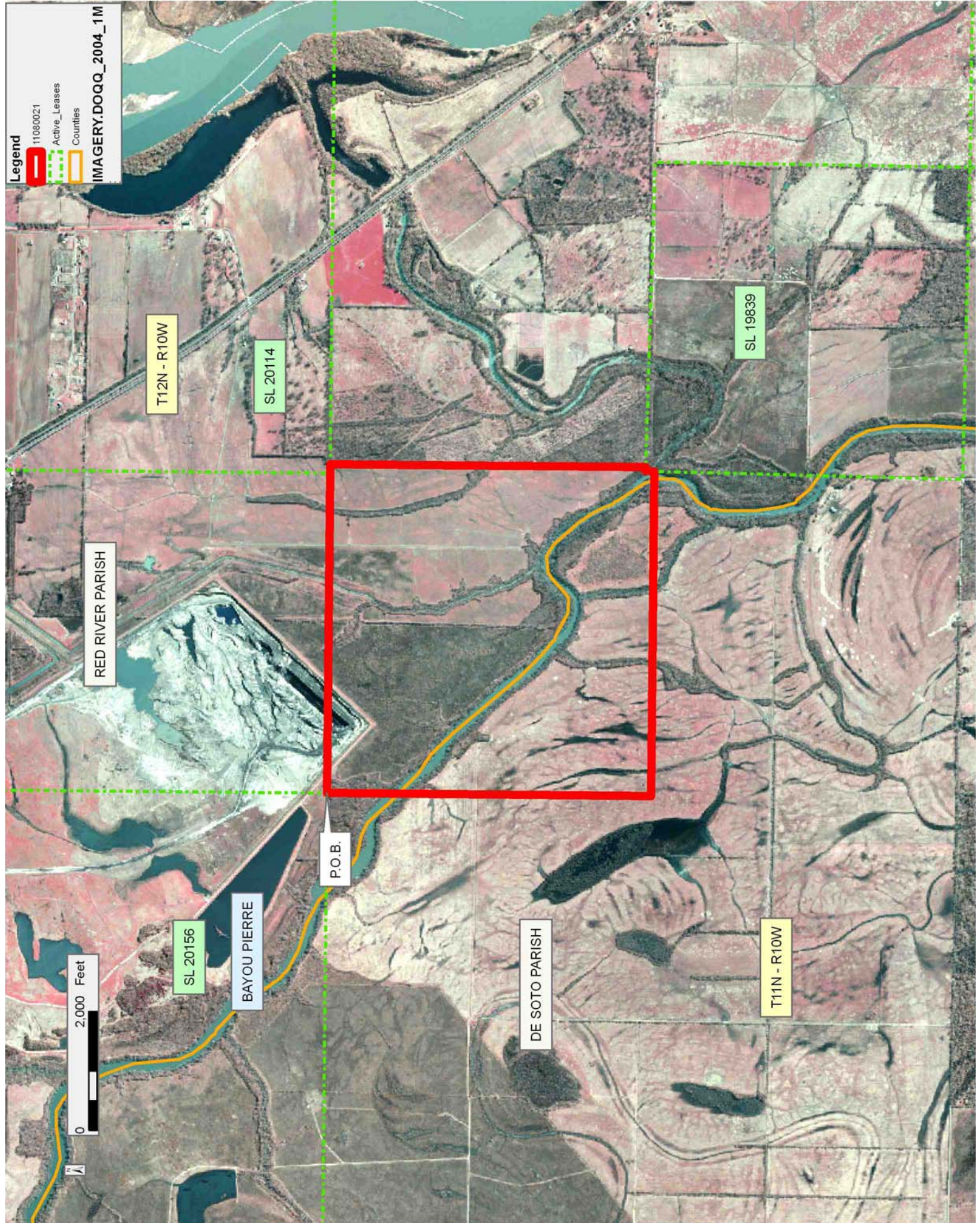
Applicant: THEOPHILUS OIL, GAS & LAND SERVICES, LLC

Bidder	Cash Payment	Price/Acre	Rental	Oil	Gas	Other



**Legend**  
 11080021  
 Active\_Leases  
 Counties

IMAGERY.DOQQ\_2004\_1M





**TRACT 42210 - St. Landry Parish, Louisiana**

All of the lands now or formerly constituting the beds and bottoms of all water bodies of every nature and description as to which title is vested in the State of Louisiana, together with all islands arising therein and other lands formed by accretion or by reliction, where allowed by law, excepting tax adjudicated lands, and not presently under mineral lease on August 10, 2011, situated in St. Landry Parish, Louisiana, and more particularly described as follows: Beginning at a point on the south boundary of State Lease No. 20553 having Coordinates of X = 1,780,943.68 and Y = 788,069.26; thence East 3,440.00 feet along the south boundary of said of State Lease No. 20553 to its Southeast corner having Coordinates of X = 1,784,383.68 and Y = 788,069.26; thence continue East 15,040.00 feet to a point having Coordinates of X = 1,799,423.68 and Y = 788,069.26; thence South 18,480.00 feet to a point having Coordinates of X = 1,799,423.68 and Y = 769,589.26; thence West 18,480.00 feet to a point having Coordinates of X = 1,780,943.68 and Y = 769,589.26; thence North 18,480.00 feet to the point of beginning, containing approximately **86 acres**, all as more particularly outlined on a plat on file in the Office of Mineral Resources, Department of Natural Resources. All bearings, distances and coordinates are based on Louisiana Coordinate System of 1927, (North or South Zone), where applicable.

NOTE: The above description of the Tract nominated for lease has been provided and corrected, where required, exclusively by the nomination party. Any mineral lease selected from this Tract and awarded by the Louisiana State Mineral and Energy Board shall be without warranty of any kind, either express, implied, or statutory, including, but not limited to, the implied warranties of merchantability and fitness for a particular purpose. Should the mineral lease awarded by the Louisiana State Mineral and Energy Board be subsequently modified, cancelled or abrogated due to the existence of conflicting leases, operating agreements, private claims or other future obligations or conditions which may affect all or any portion of the leased Tract, it shall not relieve the Lessee of the obligation to pay any bonus due thereon to the Louisiana State Mineral and Energy Board, nor shall the Louisiana State Mineral and Energy Board be obligated to refund any consideration paid by the Lessor prior to such modification, cancellation, or abrogation, including, but not limited to, bonuses, rentals and royalties.

Applicant: LESLIE M. COOPER

Bidder	Cash Payment	Price/Acre	Rental	Oil	Gas	Other



ST LANDRY PARISH

T2S - R5E

T3S - R5E

BAYOU ROUGE



P.O.B.

SL 20553

T3S - R4E





**TRACT 42211 - St. Landry Parish, Louisiana**

All of the lands now or formerly constituting the beds and bottoms of all water bodies of every nature and description as to which title is vested in the State of Louisiana, together with all islands arising therein and other lands formed by accretion or by reliction, where allowed by law, excepting tax adjudicated lands, and not presently under mineral lease on August 10, 2011, situated in St. Landry Parish, Louisiana, and more particularly described as follows: Beginning at a point having Coordinates of X = 1,803,269.04 and Y = 787,699.43; thence East 18,480.00 feet to a point having Coordinates of X = 1,821,749.04 and Y = 787,699.43; thence South approximately 12,124 feet to a point on the north boundary of State Lease No. 15346; thence along the boundaries of said State Lease No. 15346 the following courses: Westerly approximately 322 feet to its Northwest corner, Southerly approximately 4,076 feet to its Southwest corner and Easterly approximately 392 feet to a point on its Southern boundary; thence Southerly approximately 2,268 feet to a point having Coordinates of X = 1,821,749.04 and Y = 769,219.43; thence West 18,480.00 feet to a point having Coordinates of X = 1,803,269.04 and Y = 769,219.43; thence North 18,480.00 feet to the point of beginning, **LESS AND EXCEPT** any right, title, and interest in lands owned by and not under lease from the State of Louisiana, on behalf of the St. Landry Parish School Board, situated in Section 16, Township 3 South, Range 5 East, St. Landry Parish, Louisiana, contained within the above described tract, containing approximately **71 acres**, all as more particularly outlined on a plat on file in the Office of Mineral Resources, Department of Natural Resources. All bearings, distances and coordinates are based on Louisiana Coordinate System of 1927, (North or South Zone), where applicable.

NOTE: The above description of the Tract nominated for lease has been provided and corrected, where required, exclusively by the nomination party. Any mineral lease selected from this Tract and awarded by the Louisiana State Mineral and Energy Board shall be without warranty of any kind, either express, implied, or statutory, including, but not limited to, the implied warranties of merchantability and fitness for a particular purpose. Should the mineral lease awarded by the Louisiana State Mineral and Energy Board be subsequently modified, cancelled or abrogated due to the existence of conflicting leases, operating agreements, private claims or other future obligations or conditions which may affect all or any portion of the leased Tract, it shall not relieve the Lessee of the obligation to pay any bonus due thereon to the Louisiana State Mineral and Energy Board, nor shall the Louisiana State Mineral and Energy Board be obligated to refund any consideration paid by the Lessor prior to such modification, cancellation, or abrogation, including, but not limited to, bonuses, rentals and royalties.



Applicant: LESLIE M. COOPER

Bidder	Cash Payment	Price/Acre	Rental	Oil	Gas	Other

Legend

11080047

Active\_Leases

IMAGERY.DOQQ\_2008\_1M\_CIR

ST LANDRY PARISH

T2S - R5E

BAYOU JACK

SL 15346

0 4,200 Feet

P.O.B.

T3S - R5E



**TRACT 42212 - Evangeline and St. Landry Parishes, Louisiana**

All of the lands now or formerly constituting the beds and bottoms of all water bodies of every nature and description as to which title is vested in the State of Louisiana, together with all islands arising therein and other lands formed by accretion or by reliction, where allowed by law, excepting tax adjudicated lands, and not presently under mineral lease on August 10, 2011, situated in Evangeline and St. Landry Parishes, Louisiana, and more particularly described as follows: Beginning at the Southwest corner of State Lease No. 20593 having Coordinates of X = 1,721,726.58 and Y = 788,268.22; thence East 18,480.00 feet along the south boundary of said State Lease No. 20593 to its Southeast corner having Coordinates of X = 1,740,206.58 and Y = 788,268.22; thence South 18,480.00 feet to a point having Coordinates of X = 1,740,206.58 and Y = 769,788.22; thence West 18,480.00 feet to a point having Coordinates of X = 1,721,726.58 and Y = 769,788.22; thence North 18,480.00 feet to the point of beginning, (This tract includes only waterbottoms claimed and owned by the state and specifically excludes any land which the state or Wildlife and Fisheries may claim or own and to which the mineral rights are vested in them), containing approximately **63 acres**, all as more particularly outlined on a plat on file in the Office of Mineral Resources, Department of Natural Resources. All bearings, distances and coordinates are based on Louisiana Coordinate System of 1927, (North or South Zone), where applicable.

NOTE: The above description of the Tract nominated for lease has been provided and corrected, where required, exclusively by the nomination party. Any mineral lease selected from this Tract and awarded by the Louisiana State Mineral and Energy Board shall be without warranty of any kind, either express, implied, or statutory, including, but not limited to, the implied warranties of merchantability and fitness for a particular purpose. Should the mineral lease awarded by the Louisiana State Mineral and Energy Board be subsequently modified, cancelled or abrogated due to the existence of conflicting leases, operating agreements, private claims or other future obligations or conditions which may affect all or any portion of the leased Tract, it shall not relieve the Lessee of the obligation to pay any bonus due thereon to the Louisiana State Mineral and Energy Board, nor shall the Louisiana State Mineral and Energy Board be obligated to refund any consideration paid by the Lessor prior to such modification, cancellation, or abrogation, including, but not limited to, bonuses, rentals and royalties.

NOTE: The above Tract is located upon a restricted scenic river and all operations in this area must be conducted in strict conformity with the regulations of the Corps of Engineers, U.S. Army.

Applicant: LESLIE M. COOPER

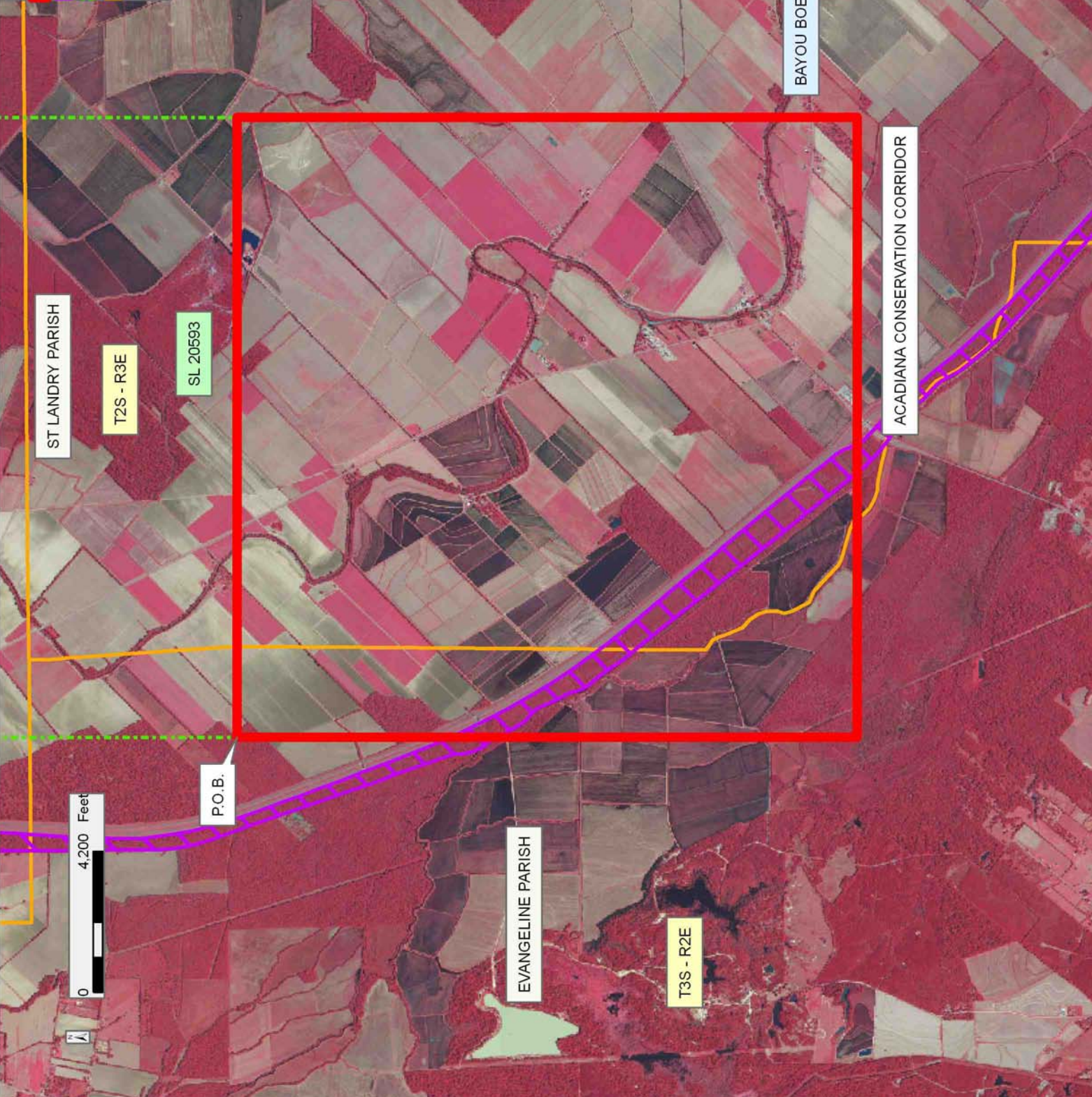
Bidder	Cash Payment	Price/Acre	Rental	Oil	Gas	Other



**Legend**

- 11080048
- Wildlife
- Active\_Leases
- Counties

**IMAGERY.DOQQ\_2008\_1M\_CIR**



**TRACT 42213 - Pointe Coupee Parish, Louisiana**

All of the lands now or formerly constituting the beds and bottoms of all water bodies of every nature and description as to which title is vested in the State of Louisiana, together with all islands arising therein and other lands formed by accretion or by reliction, where allowed by law, excepting tax adjudicated lands, and not presently under mineral lease on August 10, 2011, situated in Pointe Coupee Parish, Louisiana, and more particularly described as follows: Beginning at a point having Coordinates of X = 1,930,925.87 and Y = 774,695.04; thence Northwesterly approximately 3,498 feet to the Southernmost corner of Fractional Section 16, Township 3 South, Range 9 East; thence Northeasterly along the Southeastern boundary of Fractional Section 16 to its Southeast corner; thence Southeasterly approximately 4,594 feet said to be the Western boundary of the Mississippi River being a part of State Lease No. 20606; thence Southwesterly along the said Mississippi River boundary approximately 3,485 feet to a point; thence Northwesterly approximately 3,275 feet to the point of beginning, containing approximately **450.822 acres, LESS AND EXCEPT** that portion, if any, of State Lease No. 20606, , all as more particularly outlined on a plat on file in the Office of Mineral Resources, Department of Natural Resources. All bearings, distances and coordinates are based on Louisiana Coordinate System of 1927, (North or South Zone), where applicable.

NOTE: The above description of the Tract nominated for lease has been provided and corrected, where required, exclusively by the nomination party. Any mineral lease selected from this Tract and awarded by the Louisiana State Mineral and Energy Board shall be without warranty of any kind, either express, implied, or statutory, including, but not limited to, the implied warranties of merchantability and fitness for a particular purpose. Should the mineral lease awarded by the Louisiana State Mineral and Energy Board be subsequently modified, cancelled or abrogated due to the existence of conflicting leases, operating agreements, private claims or other future obligations or conditions which may affect all or any portion of the leased Tract, it shall not relieve the Lessee of the obligation to pay any bonus due thereon to the Louisiana State Mineral and Energy Board, nor shall the Louisiana State Mineral and Energy Board be obligated to refund any consideration paid by the Lessor prior to such modification, cancellation, or abrogation, including, but not limited to, bonuses, rentals and royalties.



Applicant: SJP OG

Bidder	Cash Payment	Price/Acre	Rental	Oil	Gas	Other



Legend

11080039

Active Leases

IMAGERY.DOQQ\_2008\_1M\_CIR

MISSISSIPPI RIVER

SL 20606

POINTE COUPEE PARISH

T3S - R9E

SL 20605

P.O.B.

2,000 Feet



**TRACT 42214 - Iberville Parish, Louisiana**

All of the lands now or formerly constituting the beds and bottoms of all water bodies of every nature and description as to which title is vested in the State of Louisiana, together with all islands arising therein and other lands formed by accretion or by reliction, where allowed by law, excepting tax adjudicated lands, and not presently under mineral lease on August 10, 2011, situated in Iberville Parish, Louisiana, and more particularly described as follows: Beginning at a point having Coordinates of X = 2,057,800.00 and Y = 555,527.00; thence North 52 degrees 23 minutes 53 seconds East 18,396.50 feet to a point having Coordinates of X = 2,072,375.00 and Y = 566,752.00; thence South 35 degrees 27 minutes 43 seconds East 10,459.16 feet to a point having Coordinates of X = 2,078,443.00 and Y = 558,233.00; thence South 55 degrees 57 minutes 13 seconds West 18,461.61 feet to a point having Coordinates of X = 2,063,146.00 and Y = 547,897.00; thence North 35 degrees 01 minutes 02 seconds West 9,316.47 feet to the point of beginning, (This lease includes only waterbottoms claimed and owned by the state and specifically excludes any land which the state may claim or own and to which the mineral rights are vested in the state), containing approximately **1,199 acres**, all as more particularly outlined on a plat on file in the Office of Mineral Resources, Department of Natural Resources. All bearings, distances and coordinates are based on Louisiana Coordinate System of 1927, (North or South Zone), where applicable.

NOTE: The above description of the Tract nominated for lease has been provided and corrected, where required, exclusively by the nomination party. Any mineral lease selected from this Tract and awarded by the Louisiana State Mineral and Energy Board shall be without warranty of any kind, either express, implied, or statutory, including, but not limited to, the implied warranties of merchantability and fitness for a particular purpose. Should the mineral lease awarded by the Louisiana State Mineral and Energy Board be subsequently modified, cancelled or abrogated due to the existence of conflicting leases, operating agreements, private claims or other future obligations or conditions which may affect all or any portion of the leased Tract, it shall not relieve the Lessee of the obligation to pay any bonus due thereon to the Louisiana State Mineral and Energy Board, nor shall the Louisiana State Mineral and Energy Board be obligated to refund any consideration paid by the Lessor prior to such modification, cancellation, or abrogation, including, but not limited to, bonuses, rentals and royalties.



Applicant: HARPER PETROLEUM COMPANY, INC.

Bidder	Cash Payment	Price/Acre	Rental	Oil	Gas	Other

11080007

IMAGERY.DOQQ\_2008\_1M\_CIF

T9S - R1E

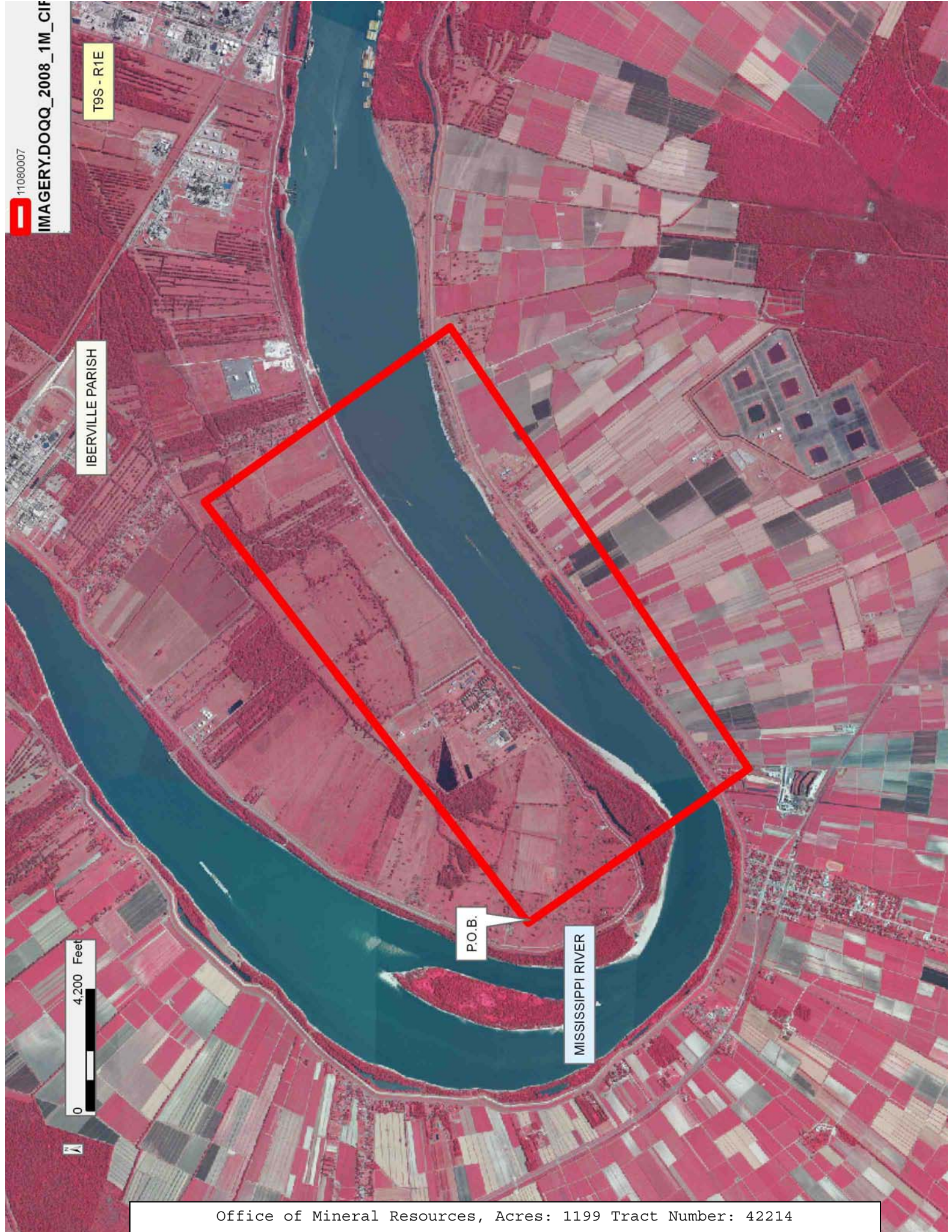
IBERVILLE PARISH

0 4,200 Feet

P.O.B.

MISSISSIPPI RIVER

Office of Mineral Resources, Acres: 1199 Tract Number: 42214





**TRACT 42215 - Iberia and St. Mary Parishes, Louisiana**

All of the lands now or formerly constituting the beds and bottoms of all water bodies of every nature and description as to which title is vested in the State of Louisiana, together with all islands arising therein and other lands formed by accretion or by reliction, where allowed by law, excepting tax adjudicated lands, and not presently under mineral lease on August 10, 2011, situated in Iberia and St. Mary Parishes, Louisiana, and more particularly described as follows: Beginning at a point having Coordinates of X = 1,938,500.00 and Y = 474,250.00; thence East approximately 11,308 feet to a point of intersection with the Western boundary of the Attakapas Island Wildlife Management Area having a Coordinate of Y = 474,250.00; thence Southeasterly, Southerly and Southwesterly along the meanders of the boundary of said Attakapas Island Wildlife Management Area to a point of intersection with the North boundary of State Lease No. 14519 having a Coordinate of Y = 467,200.00; thence West approximately 2,173 feet along the North boundary of said State Lease No. 14519 to a point having Coordinates of X = 1,945,000.00 and Y = 467,200.00; thence North 1,600.00 feet to a point having Coordinates of X = 1,945,000.00 and Y = 468,800.00; thence West 551.00 feet to a point having Coordinates of X = 1,944,449.00 and Y = 468,800.00; thence North 1,650.00 feet to a point having Coordinates of X = 1,944,449.00 and Y = 470,450.00; thence West 700.00 feet to a point having Coordinates of X = 1,943,749.00 and Y = 470,450.00; thence North 1,050.00 feet to a point having Coordinates of X = 1,943,749.00 and Y = 471,500.00; thence West 5,249.00 feet to a point having Coordinates of X = 1,938,500.00 and Y = 471,500.00; thence North 2,750.00 feet to the point of beginning, **LESS AND EXCEPT** that portion, if any, of the above described tract lying within the boundaries of the Attakapas Island Wildlife Management Area, the above described tract containing approximately **1,342 acres**, all as more particularly outlined on a plat on file in the Office of Mineral Resources, Department of Natural Resources. All bearings, distances and coordinates are based on Louisiana Coordinate System of 1927, (North or South Zone), where applicable.

NOTE: The above description of the Tract nominated for lease has been provided and corrected, where required, exclusively by the nomination party. Any mineral lease selected from this Tract and awarded by the Louisiana State Mineral and Energy Board shall be without warranty of any kind, either express, implied, or statutory, including, but not limited to, the implied warranties of merchantability and fitness for a particular purpose. Should the mineral lease awarded by the Louisiana State Mineral and Energy Board be subsequently modified, cancelled or abrogated due to the existence of conflicting leases, operating agreements, private claims or other future obligations or conditions which may affect all or any portion of the leased Tract, it shall not relieve the Lessee of the obligation to pay any bonus due thereon to the Louisiana State Mineral and Energy Board, nor shall the Louisiana State Mineral and Energy Board be obligated to refund any consideration paid by the Lessor prior to such

modification, cancellation, or abrogation, including, but not limited to, bonuses, rentals and royalties.

NOTE: This acreage is entirely within the boundary of the Atchafalaya Basin Area.

Applicant: THEOPHILUS OIL, GAS & LAND SERVICES, LLC

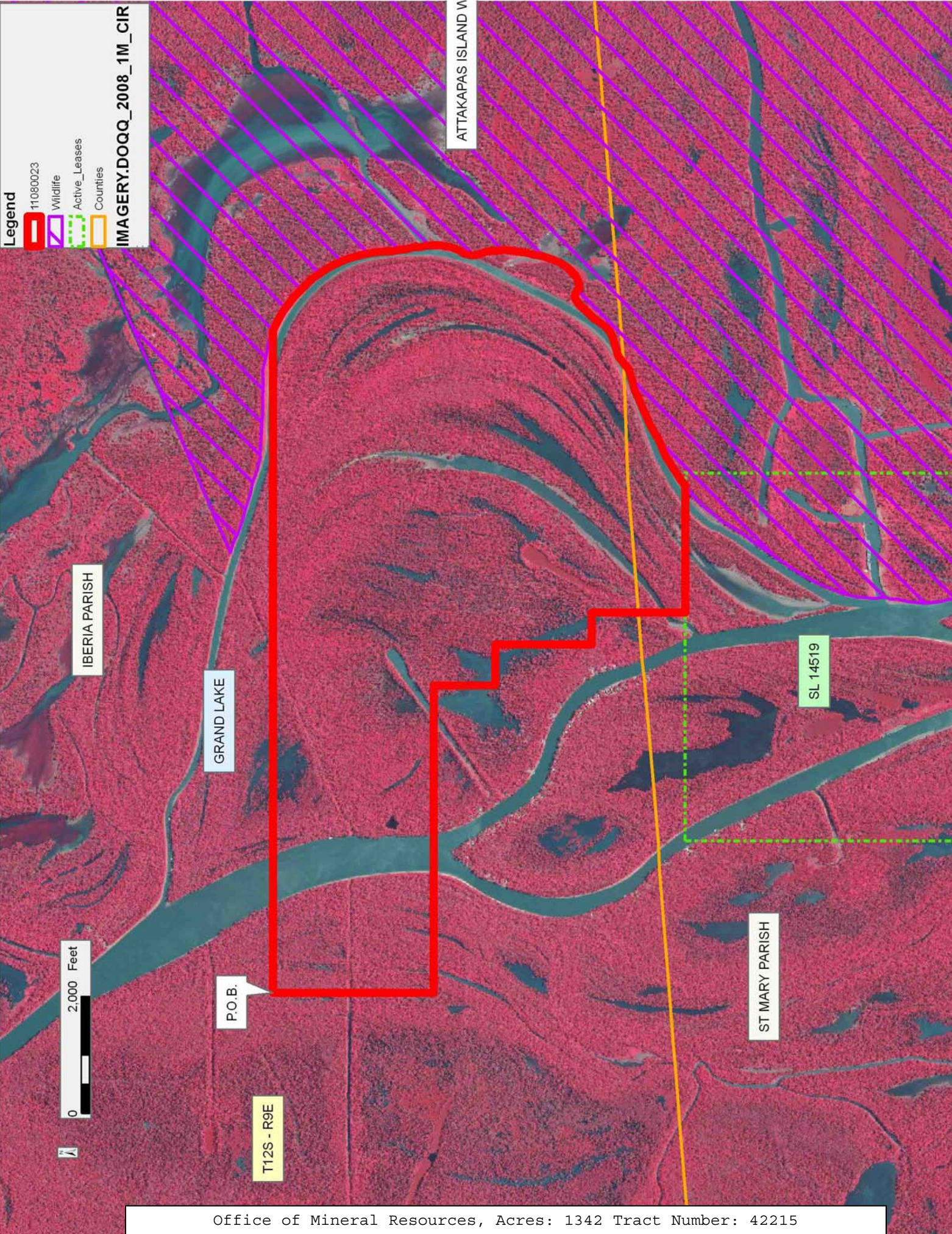
Bidder	Cash Payment	Price/Acre	Rental	Oil	Gas	Other



**Legend**

- 11080023
- Wildlife
- Active\_Leases
- Counties

**IMAGERY.DOQQ\_2008\_1M\_CIR**





**TRACT 42216 - Iberia and St. Mary Parishes, Louisiana**

All of the lands now or formerly constituting the beds and bottoms of all water bodies of every nature and description as to which title is vested in the State of Louisiana, together with all islands arising therein and other lands formed by accretion or by reliction, where allowed by law, excepting tax adjudicated lands, and not presently under mineral lease on August 10, 2011, situated in Iberia and St. Mary Parishes, Louisiana, and more particularly described as follows: Beginning at a point on the West boundary of State Lease No. 14519 having Coordinates of X = 1,941,100.00 and Y = 466,500.00; thence West 2,600.00 feet to a point having Coordinates of X = 1,938,500.00 and Y = 466,500.00; thence North 5,000.00 feet to a point having Coordinates of X = 1,938,500.00 and Y = 471,500.00; thence East 5,249.00 feet to a point having Coordinates of X = 1,943,749.00 and Y = 471,500.00; thence South 1,050.00 feet to a point having Coordinates of X = 1,943,749.00 and Y = 470,450.00; thence East 700.00 feet to a point having Coordinates of X = 1,944,449.00 and Y = 470,450.00; thence South 1,650.00 feet to a point having Coordinates of X = 1,944,449.00 and Y = 468,800.00; thence East 551.00 feet to a point having Coordinates of X = 1,945,000.00 and Y = 468,800.00; thence South 1,600.00 feet to a point on the North boundary of said State Lease No. 14519 having Coordinates of X = 1,945,000.00 and Y = 467,200.00; thence along the boundary of said State Lease No. 14519 the following courses: West 3,900.00 feet to its Northwest corner having Coordinates of X = 1,941,100.00 and Y = 467,200.00 and South 700.00 feet to the point of beginning, containing approximately **632.40 acres**, all as more particularly outlined on a plat on file in the Office of Mineral Resources, Department of Natural Resources. All bearings, distances and coordinates are based on Louisiana Coordinate System of 1927, (North or South Zone), where applicable.

NOTE: The above description of the Tract nominated for lease has been provided and corrected, where required, exclusively by the nomination party. Any mineral lease selected from this Tract and awarded by the Louisiana State Mineral and Energy Board shall be without warranty of any kind, either express, implied, or statutory, including, but not limited to, the implied warranties of merchantability and fitness for a particular purpose. Should the mineral lease awarded by the Louisiana State Mineral and Energy Board be subsequently modified, cancelled or abrogated due to the existence of conflicting leases, operating agreements, private claims or other future obligations or conditions which may affect all or any portion of the leased Tract, it shall not relieve the Lessee of the obligation to pay any bonus due thereon to the Louisiana State Mineral and Energy Board, nor shall the Louisiana State Mineral and Energy Board be obligated to refund any consideration paid by the Lessor prior to such modification, cancellation, or abrogation, including, but not limited to, bonuses, rentals and royalties.

NOTE: This acreage is entirely within the boundary of the Atchafalaya Basin Area.

Applicant: THEOPHILUS OIL, GAS & LAND SERVICES, LLC

Bidder	Cash Payment	Price/Acre	Rental	Oil	Gas	Other



**Legend**

- 11080028
- Wildlife
- Active\_Leases
- Counties

IMAGERY.DOQQ\_2008\_1M\_CIR

IBERIA PARISH

GRAND LAKE

ATTAKAPAS ISLAND WMA

SL 14519

P.O.B.

T12S - R9E

ST MARY PARISH

T13S - R9E





**TRACT 42217 - Jefferson and St. Charles Parishes, Louisiana**

All of the lands now or formerly constituting the beds and bottoms of all water bodies of every nature and description as to which title is vested in the State of Louisiana, together with all islands arising therein and other lands formed by accretion or by reliction, where allowed by law, excepting tax adjudicated lands, and not presently under mineral lease on August 10, 2011, situated in Jefferson and St. Charles Parishes, Louisiana, and more particularly described as follows: Beginning at a point having Coordinates of X = 2,366,941.00 and Y = 425,933.00; thence East 9,047.00 feet to a point having Coordinates of X = 2,375,988.00 and Y = 425,933.00; thence South 12,096.00 feet to a point having Coordinates of X = 2,375,988.00 and Y = 413,837.00; thence West 9,047.00 feet to a point having Coordinates of X = 2,366,941.00 and Y = 413,837.00; thence North 12,096.00 feet to the point of beginning, **LESS AND EXCEPT** any portion of Timken Wildlife Management Area that may lie within the above described tract, (This lease includes only waterbottoms claimed and owned by the state and specifically excludes any land which the state may claim or own and to which the mineral rights are vested in the state), containing approximately **585 acres**, all as more particularly outlined on a plat on file in the Office of Mineral Resources, Department of Natural Resources. All bearings, distances and coordinates are based on Louisiana Coordinate System of 1927, (North or South Zone), where applicable.

NOTE: The above description of the Tract nominated for lease has been provided and corrected, where required, exclusively by the nomination party. Any mineral lease selected from this Tract and awarded by the Louisiana State Mineral and Energy Board shall be without warranty of any kind, either express, implied, or statutory, including, but not limited to, the implied warranties of merchantability and fitness for a particular purpose. Should the mineral lease awarded by the Louisiana State Mineral and Energy Board be subsequently modified, cancelled or abrogated due to the existence of conflicting leases, operating agreements, private claims or other future obligations or conditions which may affect all or any portion of the leased Tract, it shall not relieve the Lessee of the obligation to pay any bonus due thereon to the Louisiana State Mineral and Energy Board, nor shall the Louisiana State Mineral and Energy Board be obligated to refund any consideration paid by the Lessor prior to such modification, cancellation, or abrogation, including, but not limited to, bonuses, rentals and royalties.

NOTE: The State of Louisiana does hereby reserve, and this lease shall be subject to, the imprescriptible right of surface use in the nature of a servitude in favor of the Department of Natural Resources, including its Offices and Commissions, for the sole purpose of implementing, constructing, servicing and maintaining approved coastal zone management and/or restoration projects. Utilization of any and all rights derived under this lease by the mineral lessee, its agents, successors or assigns, shall not interfere with nor hinder the reasonable surface use by the

Department of Natural Resources, its Offices or Commissions, as herein above reserved.

Applicant: ST. ROCH OIL & GAS, L.L.C.

Bidder	Cash Payment	Price/Acre	Rental	Oil	Gas	Other



Legend

- 110800.40
- Wildlife
- Counties

IMAGERY.DOQQ\_2008\_1M\_CIR



JEFFERSON PARISH

T14S - R23E

BAYOU SEGNETTE

T15S - R23E

LAKE SALVADOR

P.O.B.

LAKE CATAOUATCHE

ST CHARLES PARISH

TIMKEN WMA

