

TRACT 42218 - Jefferson and St. Charles Parishes, Louisiana

All of the lands now or formerly constituting the beds and bottoms of all water bodies of every nature and description as to which title is vested in the State of Louisiana, together with all islands arising therein and other lands formed by accretion or by reliction, where allowed by law, excepting tax adjudicated lands, and not presently under mineral lease on August 10, 2011, situated in Jefferson and St. Charles Parishes, Louisiana, and more particularly described as follows: Beginning at a point having Coordinates of X = 2,363,163.00 and Y = 413,837.00; thence East 12,825.00 feet to a point having Coordinates of X = 2,375,988.00 and Y = 413,837.00; thence South 8,489.00 feet to a point having Coordinates of X = 2,375,988.00 and Y = 405,348.00; thence West 12,825.00 feet to a point having Coordinates of X = 2,363,163.00 and Y = 405,348.00; thence North 8,489.00 feet to the point of beginning, **LESS AND EXCEPT** any right, title, and interest in lands owned by and not under lease from the State of Louisiana, on behalf of the Jefferson and St. Charles Parish School Boards, situated in Section 16, Township 15 South, Range 23 East, Jefferson Parish and St. Charles Parish, Louisiana, contained within the above described tract, containing approximately **2,040 acres**, all as more particularly outlined on a plat on file in the Office of Mineral Resources, Department of Natural Resources. All bearings, distances and coordinates are based on Louisiana Coordinate System of 1927, (North or South Zone), where applicable.

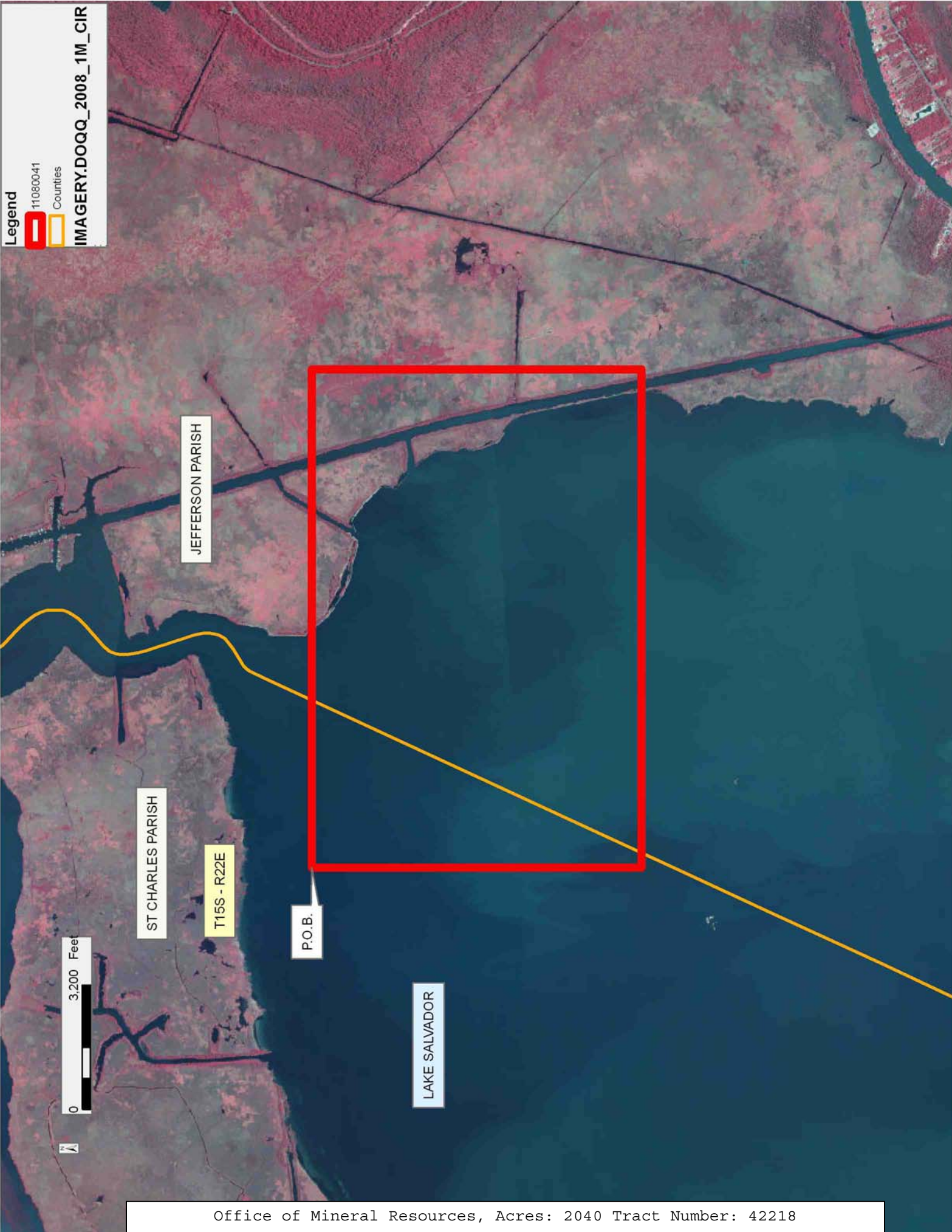
NOTE: The above description of the Tract nominated for lease has been provided and corrected, where required, exclusively by the nomination party. Any mineral lease selected from this Tract and awarded by the Louisiana State Mineral and Energy Board shall be without warranty of any kind, either express, implied, or statutory, including, but not limited to, the implied warranties of merchantability and fitness for a particular purpose. Should the mineral lease awarded by the Louisiana State Mineral and Energy Board be subsequently modified, cancelled or abrogated due to the existence of conflicting leases, operating agreements, private claims or other future obligations or conditions which may affect all or any portion of the leased Tract, it shall not relieve the Lessee of the obligation to pay any bonus due thereon to the Louisiana State Mineral and Energy Board, nor shall the Louisiana State Mineral and Energy Board be obligated to refund any consideration paid by the Lessor prior to such modification, cancellation, or abrogation, including, but not limited to, bonuses, rentals and royalties.

NOTE: The State of Louisiana does hereby reserve, and this lease shall be subject to, the imprescriptible right of surface use in the nature of a servitude in favor of the Department of Natural Resources, including its Offices and Commissions, for the sole purpose of implementing, constructing, servicing and maintaining approved coastal zone management and/or restoration projects. Utilization of any and all rights derived under this lease by the mineral lessee, its agents, successors or assigns, shall not interfere with nor hinder the reasonable surface use by the

Department of Natural Resources, its Offices or Commissions, as herein above reserved.

Applicant: ST. ROCH OIL & GAS, L.L.C.

Bidder	Cash Payment	Price/ Acre	Rental	Oil	Gas	Other



TRACT 42219 - St. Charles Parish, Louisiana

All of the lands now or formerly constituting the beds and bottoms of all water bodies of every nature and description as to which title is vested in the State of Louisiana, together with all islands arising therein and other lands formed by accretion or by reliction, where allowed by law, excepting tax adjudicated lands, and not presently under mineral lease on August 10, 2011, situated in St. Charles Parish, Louisiana, and more particularly described as follows: Beginning at a point having Coordinates of X = 2,350,379.00 and Y = 413,837.00; thence East 12,784.00 feet to a point having Coordinates of X = 2,363,163.00 and Y = 413,837.00; thence South 8,489.00 feet to a point having Coordinates of X = 2,363,163.00 and Y = 405,348.00; thence West 12,784.00 feet to a point having Coordinates of X = 2,350,379.00 and Y = 405,348.00; thence North 8,489.00 feet to the point of beginning, **LESS AND EXCEPT** any portion of Timken Wildlife Management Area that may lie within the above described tract, containing approximately **2,285 acres**, all as more particularly outlined on a plat on file in the Office of Mineral Resources, Department of Natural Resources. All bearings, distances and coordinates are based on Louisiana Coordinate System of 1927, (North or South Zone), where applicable.

NOTE: The above description of the Tract nominated for lease has been provided and corrected, where required, exclusively by the nomination party. Any mineral lease selected from this Tract and awarded by the Louisiana State Mineral and Energy Board shall be without warranty of any kind, either express, implied, or statutory, including, but not limited to, the implied warranties of merchantability and fitness for a particular purpose. Should the mineral lease awarded by the Louisiana State Mineral and Energy Board be subsequently modified, cancelled or abrogated due to the existence of conflicting leases, operating agreements, private claims or other future obligations or conditions which may affect all or any portion of the leased Tract, it shall not relieve the Lessee of the obligation to pay any bonus due thereon to the Louisiana State Mineral and Energy Board, nor shall the Louisiana State Mineral and Energy Board be obligated to refund any consideration paid by the Lessor prior to such modification, cancellation, or abrogation, including, but not limited to, bonuses, rentals and royalties.

NOTE: The State of Louisiana does hereby reserve, and this lease shall be subject to, the imprescriptible right of surface use in the nature of a servitude in favor of the Department of Natural Resources, including its Offices and Commissions, for the sole purpose of implementing, constructing, servicing and maintaining approved coastal zone management and/or restoration projects. Utilization of any and all rights derived under this lease by the mineral lessee, its agents, successors or assigns, shall not interfere with nor hinder the reasonable surface use by the Department of Natural Resources, its Offices or Commissions, as herein above reserved.

Applicant: ST. ROCH OIL & GAS, L.L.C.

Bidder	Cash Payment	Price/ Acre	Rental	Oil	Gas	Other

Legend

11080042 Wildlife

IMAGERY.DOQQ_2008_1M_CIR

ST CHARLES PARISH

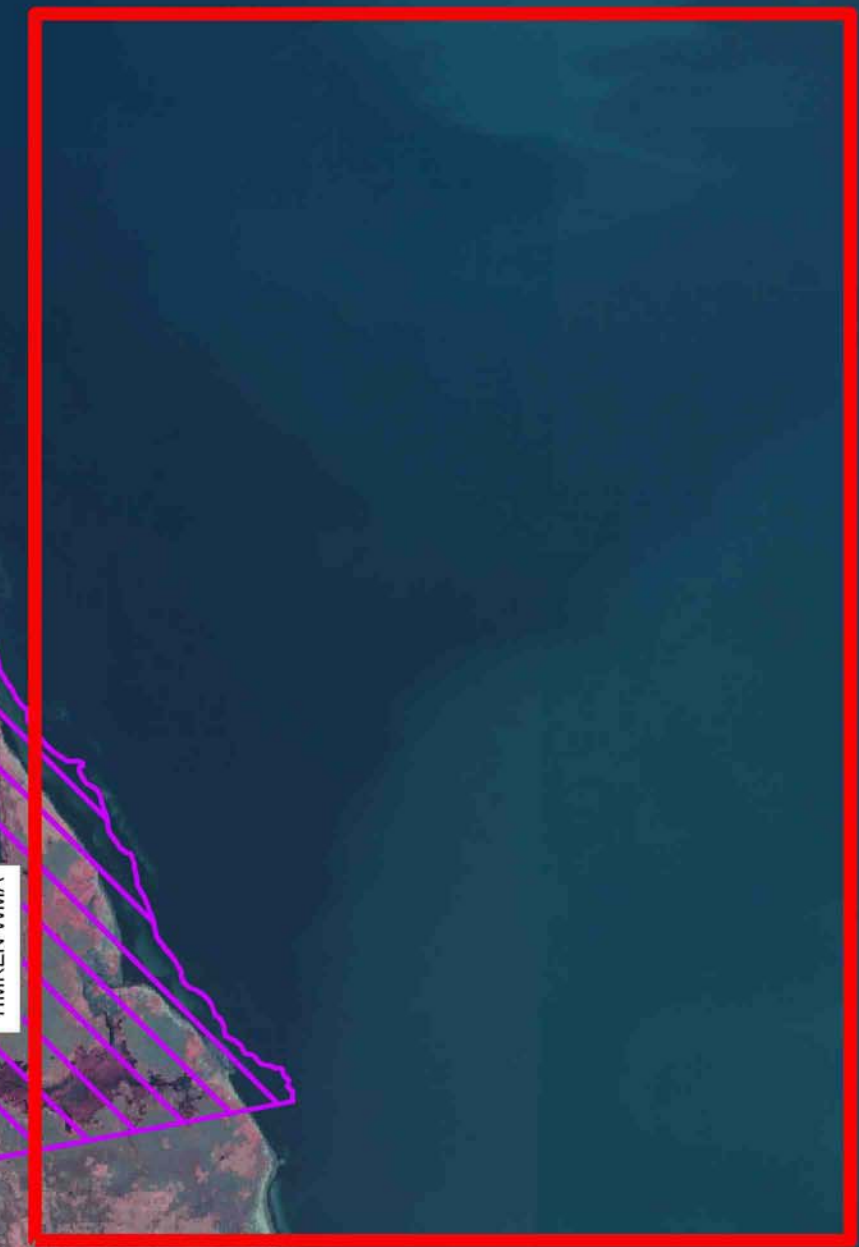
T15S - R22E

TIMKEN WMA

LAKE SALVADOR

0 2,000 Feet

P.O.B.



TRACT 42220 - Jefferson and St. Charles Parishes, Louisiana

All of the lands now or formerly constituting the beds and bottoms of all water bodies of every nature and description as to which title is vested in the State of Louisiana, together with all islands arising therein and other lands formed by accretion or by reliction, where allowed by law, excepting tax adjudicated lands, and not presently under mineral lease on August 10, 2011, situated in Jefferson and St. Charles Parishes, Louisiana, and more particularly described as follows: Beginning at a point having Coordinates of X = 2,363,163.00 and Y = 405,348.00; thence East 12,825.00 feet to a point having Coordinates of X = 2,375,988.00 and Y = 405,348.00; thence South 8,588.00 feet to a point having Coordinates of X = 2,375,988.00 and Y = 396,760.00; thence West 12,825.00 feet to a point having Coordinates of X = 2,363,163.00 and Y = 396,760.00; thence North 4,145.28 feet to a point on the South boundary of State Lease No. 17140 having Coordinates of X = 2,363,163.00 and Y = 400,905.28; thence along the boundary of said State Lease No. 17140 the following courses: East 1,951.19 feet, North 2,315.39 feet, West 540.00 feet and North 44 degrees 00 minutes 00 seconds West 2,031.49 feet to a point having Coordinates of X = 2,363,163.00 and Y = 404,682.00; thence North 666.00 feet to the point of beginning, **LESS AND EXCEPT** all that portion of State Lease No. 20413 that lies within the above described tract and more particularly described as follows: Commencing at the Northwest corner of the above described tract having Coordinates of X = 2,363,163.00 and Y = 405,348.00; thence South 78 degrees 22 minutes 50 seconds East 8,346.13 feet to the Northwest corner of said State Lease No. 20413 having Coordinates of X = 2,371,338.09 and Y = 403,667.00; thence along the boundary of said State Lease No. 20413 the following courses: East 4,119.72 feet, South 3,166.12 feet, West 4,119.72 feet and North 3,166.12 feet to its Northwest corner, and **LESS AND EXCEPT** any right, title, and interest in lands owned by and not under lease from the State of Louisiana, on behalf of the Jefferson Parish and St. Charles Parish School Boards, situated in Section 16, Township 15 South, Range 23 East, Jefferson and St. Charles Parishes, Louisiana, contained within the above described tract, containing approximately **1,895 acres**, all as more particularly outlined on a plat on file in the Office of Mineral Resources, Department of Natural Resources. All bearings, distances and coordinates are based on Louisiana Coordinate System of 1927, (North or South Zone), where applicable.

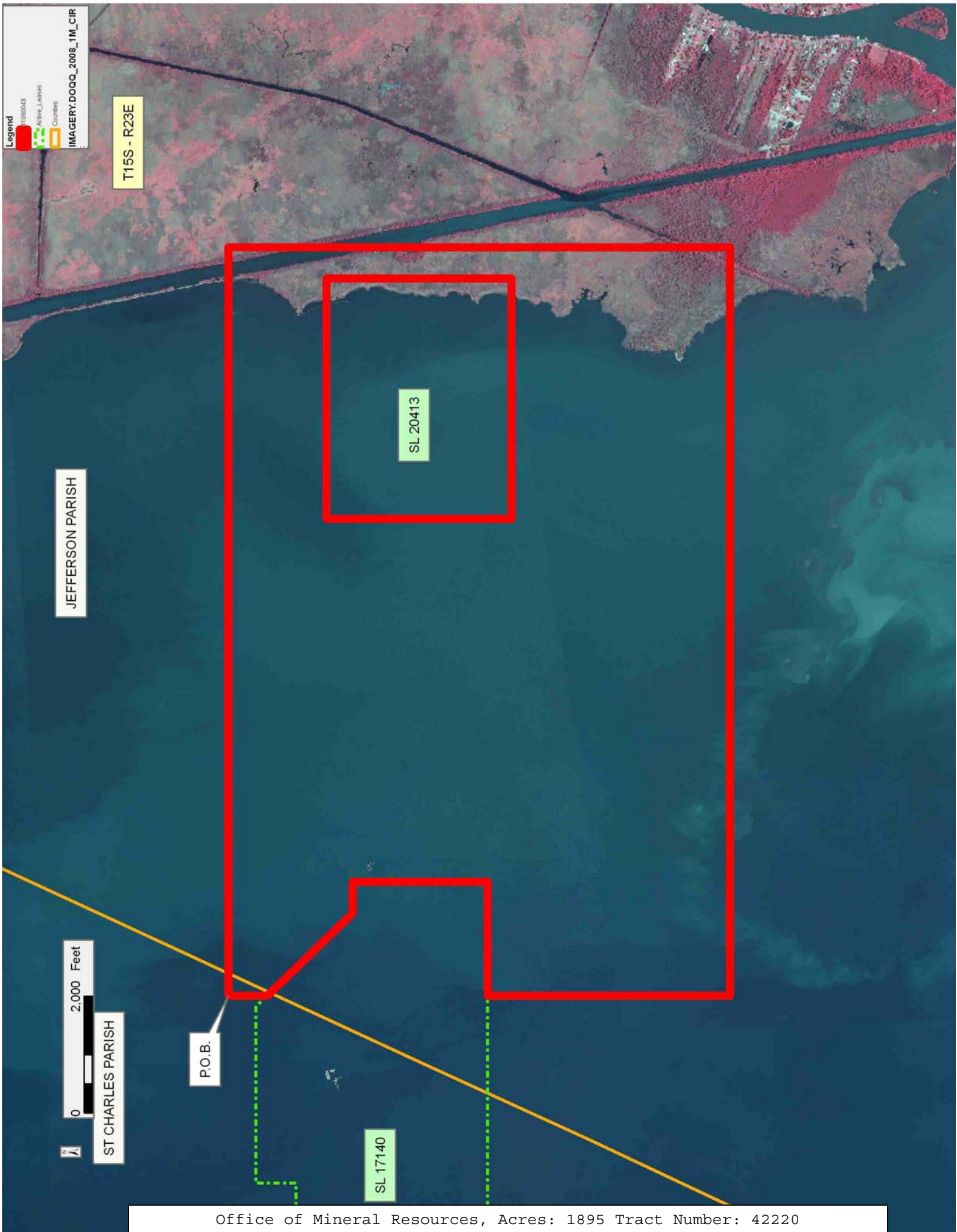
NOTE: The above description of the Tract nominated for lease has been provided and corrected, where required, exclusively by the nomination party. Any mineral lease selected from this Tract and awarded by the Louisiana State Mineral and Energy Board shall be without warranty of any kind, either express, implied, or statutory, including, but not limited to, the implied warranties of merchantability and fitness for a particular purpose. Should the mineral lease awarded by the Louisiana State Mineral and Energy Board be subsequently modified, cancelled or abrogated due to the existence of conflicting leases, operating agreements, private claims or other future obligations or conditions which may affect all or any

portion of the leased Tract, it shall not relieve the Lessee of the obligation to pay any bonus due thereon to the Louisiana State Mineral and Energy Board, nor shall the Louisiana State Mineral and Energy Board be obligated to refund any consideration paid by the Lessor prior to such modification, cancellation, or abrogation, including, but not limited to, bonuses, rentals and royalties.

NOTE: The State of Louisiana does hereby reserve, and this lease shall be subject to, the imprescriptible right of surface use in the nature of a servitude in favor of the Department of Natural Resources, including its Offices and Commissions, for the sole purpose of implementing, constructing, servicing and maintaining approved coastal zone management and/or restoration projects. Utilization of any and all rights derived under this lease by the mineral lessee, its agents, successors or assigns, shall not interfere with nor hinder the reasonable surface use by the Department of Natural Resources, its Offices or Commissions, as herein above reserved.

Applicant: ST. ROCH OIL & GAS, L.L.C.

Bidder	Cash Payment	Price/ Acre	Rental	Oil	Gas	Other



TRACT 42221 - Jefferson and St. Charles Parishes, Louisiana

All of the lands now or formerly constituting the beds and bottoms of all water bodies of every nature and description as to which title is vested in the State of Louisiana, together with all islands arising therein and other lands formed by accretion or by reliction, where allowed by law, excepting tax adjudicated lands, and not presently under mineral lease on August 10, 2011, situated in Jefferson and St. Charles Parishes, Louisiana, and more particularly described as follows: Beginning at a point having Coordinates of X = 2,350,379.00 and Y = 405,348.00; thence East 12,784.00 feet to a point having Coordinates of X = 2,363,163.00 and Y = 405,348.00; thence South 666.00 feet to a point on the Northern boundary of State Lease No. 17140 having Coordinates of X = 2,363,163.00 and Y = 404,682.00; thence along the boundary of said State Lease No. 17140 the following courses: North 44 degrees 00 minutes 00 seconds West 268.52 feet, West 3,019.98 feet, South 690.00 feet, West 1,150.00 feet, South 3,279.88 feet and East 4,356.51 feet to a point having Coordinates of X = 2,363,163.00 and Y = 400,905.28; thence South 4,145.28 feet to a point having Coordinates of X = 2,363,163.00 and Y = 396,760.00; thence West 12,784.00 feet to a point having Coordinates of X = 2,350,379.00 and Y = 396,760.00; thence North 8,588.00 feet to the point of beginning, containing approximately **2,142.00 acres**, all as more particularly outlined on a plat on file in the Office of Mineral Resources, Department of Natural Resources. All bearings, distances and coordinates are based on Louisiana Coordinate System of 1927, (North or South Zone), where applicable.

NOTE: The above description of the Tract nominated for lease has been provided and corrected, where required, exclusively by the nomination party. Any mineral lease selected from this Tract and awarded by the Louisiana State Mineral and Energy Board shall be without warranty of any kind, either express, implied, or statutory, including, but not limited to, the implied warranties of merchantability and fitness for a particular purpose. Should the mineral lease awarded by the Louisiana State Mineral and Energy Board be subsequently modified, cancelled or abrogated due to the existence of conflicting leases, operating agreements, private claims or other future obligations or conditions which may affect all or any portion of the leased Tract, it shall not relieve the Lessee of the obligation to pay any bonus due thereon to the Louisiana State Mineral and Energy Board, nor shall the Louisiana State Mineral and Energy Board be obligated to refund any consideration paid by the Lessor prior to such modification, cancellation, or abrogation, including, but not limited to, bonuses, rentals and royalties.

NOTE: The State of Louisiana does hereby reserve, and this lease shall be subject to, the imprescriptible right of surface use in the nature of a servitude in favor of the Department of Natural Resources, including its Offices and Commissions, for the sole purpose of implementing, constructing, servicing and maintaining approved coastal zone management and/or restoration projects. Utilization of any and all rights derived

under this lease by the mineral lessee, its agents, successors or assigns, shall not interfere with nor hinder the reasonable surface use by the Department of Natural Resources, its Offices or Commissions, as herein above reserved.

Applicant: ST. ROCH OIL & GAS, L.L.C.

Bidder	Cash Payment	Price/ Acre	Rental	Oil	Gas	Other

Legend

11080044

Active Leases

Counties

IMAGERY.DOQQ_2008_1M_CIR

JEFFERSON PARISH

SL 17140

ST CHARLES PARISH

LAKE SALVADOR

P.O.B.



TRACT 42222 - Portion of Blocks 27, and 38, Breton Sound Area, Plaquemines Parish, Louisiana

All of the lands now or formerly constituting the beds and bottoms of all water bodies of every nature and description as to which title is vested in the State of Louisiana, together with all islands arising therein and other lands formed by accretion or by reliction, where allowed by law, excepting tax adjudicated lands, and not presently under mineral lease on August 10, 2011, situated in Plaquemines Parish, Louisiana, and more particularly described as follows: Beginning at a point on the East line of Block 27, Breton Sound Area, having Coordinates of X = 2,723,850.00 and Y = 334,991.74; thence South 4,251.91 feet along the East line of said Block 27 to a point on the Coastline as decreed by the Supreme Court of the United States, as determined by a Special Master appointed therein, in litigation styled *United States v. State of Louisiana et al No. 9 Original*, in 1975, having Coordinates of X = 2,723,850.00 and Y = 330,739.83; thence along said Coastline the following courses: Southwesterly on a straight line to a point having Coordinates of X = 2,722,321 and Y = 329,172; Southwesterly on a straight line to a point having Coordinates of X = 2,720,696 and Y = 326,779; Southwesterly on a straight line to a point on the common block line between said Block 27 and Block 38, Breton Sound Area, having Coordinates of X = 2,718,009.98 and Y = 322,330.00; Southwesterly on a straight line to a point having Coordinates of X = 2,717,012 and Y = 320,677; Southwesterly on a straight line to a point having Coordinates of X = 2,715,236 and Y = 318,391; Southwesterly on a straight line to a point having Coordinates of X = 2,714,633 and Y = 317,731; Southwesterly on a straight line to a point having Coordinates of X = 2,713,324 and Y = 316,801; and Southwesterly on a straight line to a point having Coordinates of X = 2,712,677.13 and Y = 316,511.74; thence North 5,818.26 feet to a point on the common block line between said Block 27 and said Block 38 having Coordinates of X = 2,712,677.13 and Y = 322,330.00; thence North 5,200.00 feet to a point on the South line of State Lease No. 4574, as amended, having Coordinates of X = 2,712,677.13 and Y = 327,530.00; thence along the boundary of said State Lease No. 4574, as amended, the following courses: East 3,922.87 feet to a point having Coordinates of X = 2,716,600.00 and Y = 327,530.00 and North 1,750.00 feet to Southwest corner of State Lease No. 15958 having Coordinates of X = 2,716,600.00 and Y = 329,280.00; thence along the boundary of said State Lease No. 15958 the following courses: North 51 degrees 20 minutes 25 seconds East 4,354.12 feet to a point having Coordinates of X = 2,720,000.00 and Y = 332,000.00 and North 1,030.00 feet to its Northeast corner, said corner also being a point on the Eastern boundary of said State Lease No. 4574, as amended, having Coordinates of X = 2,720,000.00 and Y = 333,030.00; thence along the boundary of said State Lease No. 4574, as amended, the following courses: East 200.00 feet to a point having Coordinates of X = 2,720,200.00 and Y = 333,030.00, East 14.88 feet to a point having Coordinates of X = 2,720,214.88 and Y = 333,030.00 and North 28 degrees 20 minutes 54 seconds 2,229.05 feet to a point having Coordinates of X = 2,721,273.31 and Y = 334,991.74; thence East 2,576.69 feet to the Point of Beginning, (This tract includes only

waterbottoms claimed and owned by the state and specifically excludes any land which the state may claim or own and to which the mineral rights are vested in the state), **containing 2,015.51 acres, LESS AND EXCEPT** that portion, if any, of State Lease No. 4574, as amended and State Lease No. 15958, as amended, all as more particularly outlined on a plat on file in the Office of Mineral Resources, Department of Natural Resources. All bearings, distances and coordinates are based on Louisiana Coordinate System of 1927, (North or South Zone), where applicable.

NOTE: The above description of the Tract nominated for lease has been provided and corrected, where required, exclusively by the nomination party. Any mineral lease selected from this Tract and awarded by the Louisiana State Mineral and Energy Board shall be without warranty of any kind, either express, implied, or statutory, including, but not limited to, the implied warranties of merchantability and fitness for a particular purpose. Should the mineral lease awarded by the Louisiana State Mineral and Energy Board be subsequently modified, cancelled or abrogated due to the existence of conflicting leases, operating agreements, private claims or other future obligations or conditions which may affect all or any portion of the leased Tract, it shall not relieve the Lessee of the obligation to pay any bonus due thereon to the Louisiana State Mineral and Energy Board, nor shall the Louisiana State Mineral and Energy Board be obligated to refund any consideration paid by the Lessor prior to such modification, cancellation, or abrogation, including, but not limited to, bonuses, rentals and royalties.

NOTE: This tract is located within the boundaries of a wildlife management area or refuge and any operations conducted thereon in conjunction with this mineral lease may be subject to rules and regulations promulgated by the Department of Wildlife and Fisheries for the protection of fish, birds and other wildlife including, but not necessarily limited to, the following:

- No activities will be allowed without written authorization from the Louisiana Department of Wildlife and Fisheries. All projects will be coordinated and approved by the appropriate WMA Supervisor prior to any activities on the wildlife management area.
- Proposed projects will be evaluated on a case by case basis. Modifications to proposed projects may be required including, but not limited to, access routes, spoil placement, well sites, flow lines and other appurtenant structures required by the Louisiana Department of Wildlife and Fisheries.
- Compensatory mitigation will be required to offset unavoidable wetland impacts.
- Removal of all structures, facilities, and equipment will be required within 120 days of abandonment unless otherwise agreed to by the Department of Wildlife and Fisheries.
- No activities will be allowed during the hunting season unless approved by the Department.

- Compliance with the said WMA regulations will be required unless otherwise specified by the Department.
- Prior to submitting applications for wetland permits to Federal and State permitting agencies the lease holder shall coordinate project details with the Louisiana Department of Wildlife and Fisheries, Fur and Refuge Division. Contact person for the Department will be Mike Windham at (504) 284-5268.

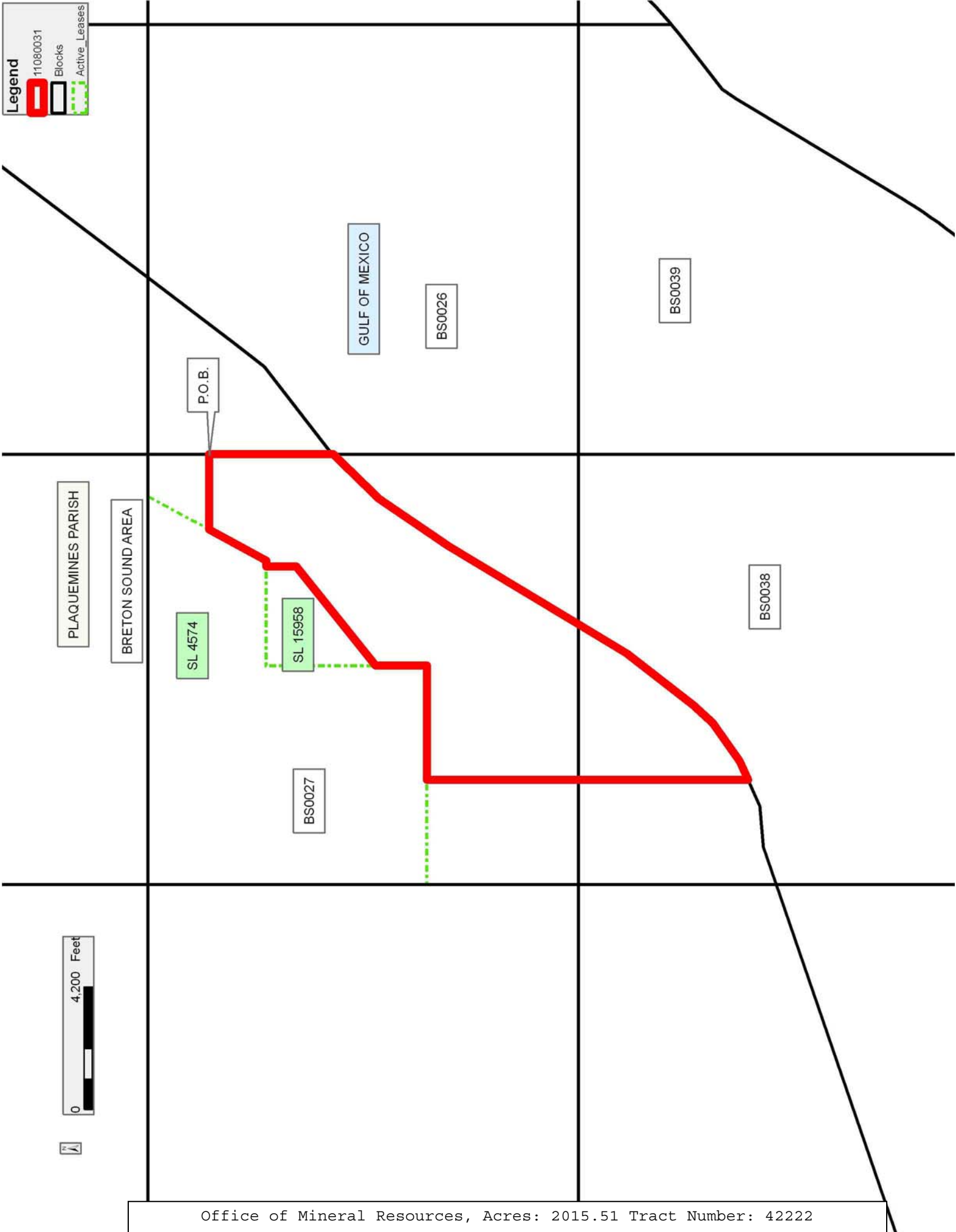
NOTE: The State of Louisiana does hereby reserve, and this lease shall be subject to, the imprescriptible right of surface use in the nature of a servitude in favor of the Department of Natural Resources, including its Offices and Commissions, for the sole purpose of implementing, constructing, servicing and maintaining approved coastal zone management and/or restoration projects. Utilization of any and all rights derived under this lease by the mineral lessee, its agents, successors or assigns, shall not interfere with nor hinder the reasonable surface use by the Department of Natural Resources, its Offices or Commissions, as herein above reserved.

Applicant: ACL EXPLORATION, INC.

Bidder	Cash Payment	Price/ Acre	Rental	Oil	Gas	Other

Legend

- 11080031
- Blocks
- Active_Leases



TRACT 42223 - Portion of Blocks 27, 28, 37, and 38, Breton Sound Area, Plaquemines Parish, Louisiana

All of the lands now or formerly constituting the beds and bottoms of all water bodies of every nature and description as to which title is vested in the State of Louisiana, together with all islands arising therein and other lands formed by accretion or by reliction, where allowed by law, excepting tax adjudicated lands, and not presently under mineral lease on August 10, 2011, situated in Plaquemines Parish, Louisiana, and more particularly described as follows: Beginning at a point on the Southern boundary of State Lease No. 4574, as amended, having Coordinates of X = 2,712,677.13 and Y = 327,530.00; thence South 5,200.00 feet to a point on the common boundary line between Block 27, Breton Sound Area, and Block 38, Breton Sound Area, having Coordinates of X = 2,712,677.13 and Y = 322,330.00; thence South 5,818.26 feet to a point on the Louisiana Coastline, as decreed by the Supreme Court of the United States, as determined by a Special Master appointed therein, in litigation styled *United States v. State of Louisiana et al No. 9 Original*, in 1975, having Coordinates of X = 2,712,677.13 and Y = 316,511.74; thence along said Coastline the following courses: Southwesterly on a straight line to a point having Coordinates of X = 2,711,772 and Y = 316,107; Southwesterly on a straight line to a point having Coordinates of X = 2,710,380 and Y = 315,995; Southwesterly on a straight line to a point on the common block line between said Block 38 and Block 37, Breton Sound Area, having Coordinates of X = 2,709,100.00 and Y = 315,555.59; and Southwesterly on a straight line to a point having Coordinates of X = 2,704,580.00 and Y = 314,003.94; thence North 246.06 feet to the Southeast corner of State Lease No. 4409, Portion B, as amended having Coordinates of X = 2,704,580.00 and Y = 314,250.00; thence North 4,020.00 feet along the East line of said State Lease No. 4409, Portion B, to its Northeast corner having Coordinates of X = 2,704,580.00 and Y = 318,270.00; thence North 4,060.00 feet to a point on the common block line between said Block 37 and Block 28, Breton Sound Area, having Coordinates of X = 2,704,580.00 and Y = 322,330.00; thence West 1,940.00 feet along the common block line between said Block 37 and said Block 28 to the Southeast corner of State Lease No. 1999, as amended, having Coordinates of X = 2,702,640.00 and Y = 322,330.00; thence along the boundary of said State Lease No. 1999, as amended, the following courses: North 5,200.00 feet to a point having Coordinates of X = 2,702,640.00 and Y = 327,530.00 and East 6,460.00 feet to the Southwest corner of said State Lease No. 4574, as amended, having Coordinates of X = 2,709,100.00 and Y = 327,530.00; thence East 3,577.13 feet along the Southern boundary of said State Lease No. 4574, as amended, to the Point of Beginning, (This tract includes only waterbottoms claimed and owned by the state and specifically excludes any land which the state may claim or own and to which the mineral rights are vested in the state), containing **2,500.00 acres, LESS AND EXCEPT** that portion, if any, of State Lease No. 4409, as amended, State Lease No. 1999, as amended and State Lease No. 4574, as amended, all as more particularly outlined on a plat on file in the Office of Mineral Resources, Department of Natural Resources.

All bearings, distances and coordinates are based on Louisiana Coordinate System of 1927, (North or South Zone), where applicable.

NOTE: The above description of the Tract nominated for lease has been provided and corrected, where required, exclusively by the nomination party. Any mineral lease selected from this Tract and awarded by the Louisiana State Mineral and Energy Board shall be without warranty of any kind, either express, implied, or statutory, including, but not limited to, the implied warranties of merchantability and fitness for a particular purpose. Should the mineral lease awarded by the Louisiana State Mineral and Energy Board be subsequently modified, cancelled or abrogated due to the existence of conflicting leases, operating agreements, private claims or other future obligations or conditions which may affect all or any portion of the leased Tract, it shall not relieve the Lessee of the obligation to pay any bonus due thereon to the Louisiana State Mineral and Energy Board, nor shall the Louisiana State Mineral and Energy Board be obligated to refund any consideration paid by the Lessor prior to such modification, cancellation, or abrogation, including, but not limited to, bonuses, rentals and royalties.

NOTE: This tract is located within the boundaries of a wildlife management area or refuge and any operations conducted thereon in conjunction with this mineral lease may be subject to rules and regulations promulgated by the Department of Wildlife and Fisheries for the protection of fish, birds and other wildlife including, but not necessarily limited to, the following:

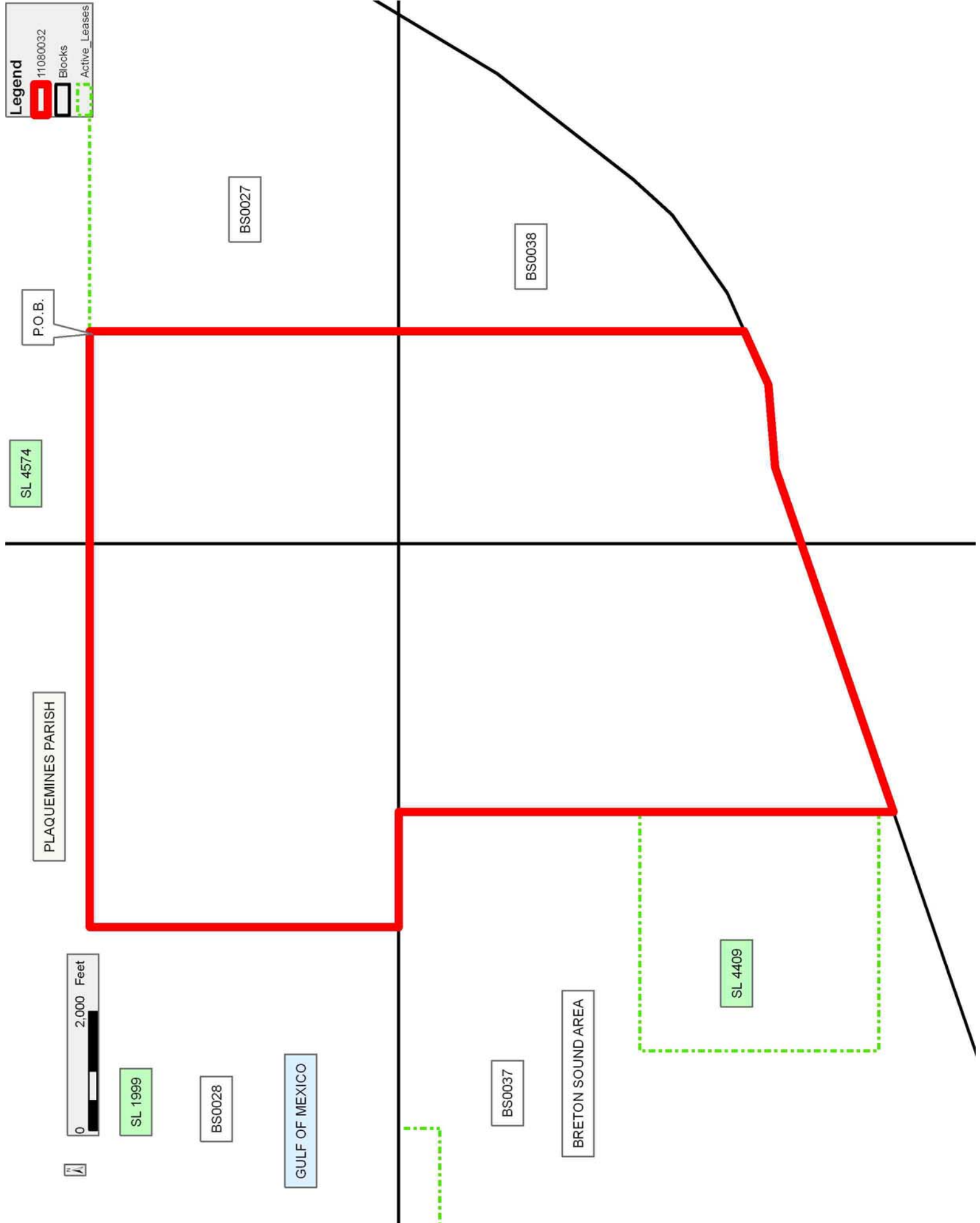
- No activities will be allowed without written authorization from the Louisiana Department of Wildlife and Fisheries. All projects will be coordinated and approved by the appropriate WMA Supervisor prior to any activities on the wildlife management area.
- Proposed projects will be evaluated on a case by case basis. Modifications to proposed projects may be required including, but not limited to, access routes, spoil placement, well sites, flow lines and other appurtenant structures required by the Louisiana Department of Wildlife and Fisheries.
- Compensatory mitigation will be required to offset unavoidable wetland impacts.
- Removal of all structures, facilities, and equipment will be required within 120 days of abandonment unless otherwise agreed to by the Department of Wildlife and Fisheries.
- No activities will be allowed during the hunting season unless approved by the Department.
- Compliance with the said WMA regulations will be required unless otherwise specified by the Department.
- Prior to submitting applications for wetland permits to Federal and State permitting agencies the lease holder shall coordinate project details with the Louisiana Department of Wildlife and Fisheries, Fur

and Refuge Division. Contact person for the Department will be Mike Windham at (504) 284-5268.

NOTE: The State of Louisiana does hereby reserve, and this lease shall be subject to, the imprescriptible right of surface use in the nature of a servitude in favor of the Department of Natural Resources, including its Offices and Commissions, for the sole purpose of implementing, constructing, servicing and maintaining approved coastal zone management and/or restoration projects. Utilization of any and all rights derived under this lease by the mineral lessee, its agents, successors or assigns, shall not interfere with nor hinder the reasonable surface use by the Department of Natural Resources, its Offices or Commissions, as herein above reserved.

Applicant: ACL EXPLORATION, INC

Bidder	Cash Payment	Price/ Acre	Rental	Oil	Gas	Other



TRACT 42224 - Portion of Block 37, Breton Sound Area, Plaquemines Parish, Louisiana

All of the lands now or formerly constituting the beds and bottoms of all water bodies of every nature and description as to which title is vested in the State of Louisiana, together with all islands arising therein and other lands formed by accretion or by reliction, where allowed by law, excepting tax adjudicated lands, and not presently under mineral lease on August 10, 2011, situated in Plaquemines Parish, Louisiana, and more particularly described as follows: Beginning at a point on the North line of Block 37, Breton Sound Area, having Coordinates of X = 2,704,580.00 and Y = 322,330.00; thence South 4,060.00 feet to the Northeast corner of State Lease No. 4409, Portion B, as amended having Coordinates of X = 2,704,580.00 and Y = 318,270.00; thence along the boundary of said State Lease No. 4409, Portion B, the following courses: West 4,020.00 feet to a point having Coordinates of X = 2,700,560.00 and Y = 318,270.00; South 4,020.00 feet to a point having Coordinates of X = 2,700,560.00 and Y = 314,250.00; and East 4,020.00 feet to its Southeast corner having Coordinates of X = 2,704,580.00 and Y = 314,250.00; thence South 246.06 feet to a point on the Louisiana Coastline, as decreed by the Supreme Court of the United States, as determined by a Special Master appointed therein, in litigation styled *United States v. State of Louisiana et al No. 9 Original*, in 1975, having Coordinates of X = 2,704,580.00 and Y = 314,003.94; thence Southwesterly on a straight line along said Coastline to a point on the Eastern boundary of State Lease No. 1230, as amended also being the West line of said Block 37 having Coordinates of X = 2,694,350.00 and Y = 310,492.12; thence North 11,144.88 feet along the West line of said Block 37 to the Southwest corner of State Lease No. 4409, Portion A, as amended having Coordinates of X = 2,694,350.00 and Y = 321,637.00; thence along the boundary of said State Lease No. 4409, Portion A, the following courses: East 4,904.00 feet to a point having Coordinates of X = 2,699,254.00 and Y = 321,637.00 and North 693.00 feet to a point on the Southern boundary of State Lease No. 1999, as amended, having Coordinates of X = 2,699,254.00 and Y = 322,330.00; thence East 3,386.00 feet along the Southern boundary of State Lease No. 1999, as amended, to its Southeast corner, said corner also being a point on the North line of said Block 37, having Coordinates of X = 2,702,640.00 and Y = 322,330.00; thence East 1,940.00 feet along the North line of said Block 37 to the Point of Beginning, containing **1,918.73 acres, LESS AND EXCEPT** that portion, if any, of State Lease No. 1999, as amended, State Lease No. 1230, as amended and State Lease No. 4409, as amended, all as more particularly outlined on a plat on file in the Office of Mineral Resources, Department of Natural Resources. All bearings, distances and coordinates are based on Louisiana Coordinate System of 1927, (North or South Zone), where applicable.

NOTE: The above description of the Tract nominated for lease has been provided and corrected, where required, exclusively by the nomination party. Any mineral lease selected from this Tract and awarded by the Louisiana State Mineral and Energy Board shall be without warranty of any

kind, either express, implied, or statutory, including, but not limited to, the implied warranties of merchantability and fitness for a particular purpose. Should the mineral lease awarded by the Louisiana State Mineral and Energy Board be subsequently modified, cancelled or abrogated due to the existence of conflicting leases, operating agreements, private claims or other future obligations or conditions which may affect all or any portion of the leased Tract, it shall not relieve the Lessee of the obligation to pay any bonus due thereon to the Louisiana State Mineral and Energy Board, nor shall the Louisiana State Mineral and Energy Board be obligated to refund any consideration paid by the Lessor prior to such modification, cancellation, or abrogation, including, but not limited to, bonuses, rentals and royalties.

NOTE: The State of Louisiana does hereby reserve, and this lease shall be subject to, the imprescriptible right of surface use in the nature of a servitude in favor of the Department of Natural Resources, including its Offices and Commissions, for the sole purpose of implementing, constructing, servicing and maintaining approved coastal zone management and/or restoration projects. Utilization of any and all rights derived under this lease by the mineral lessee, its agents, successors or assigns, shall not interfere with nor hinder the reasonable surface use by the Department of Natural Resources, its Offices or Commissions, as herein above reserved.

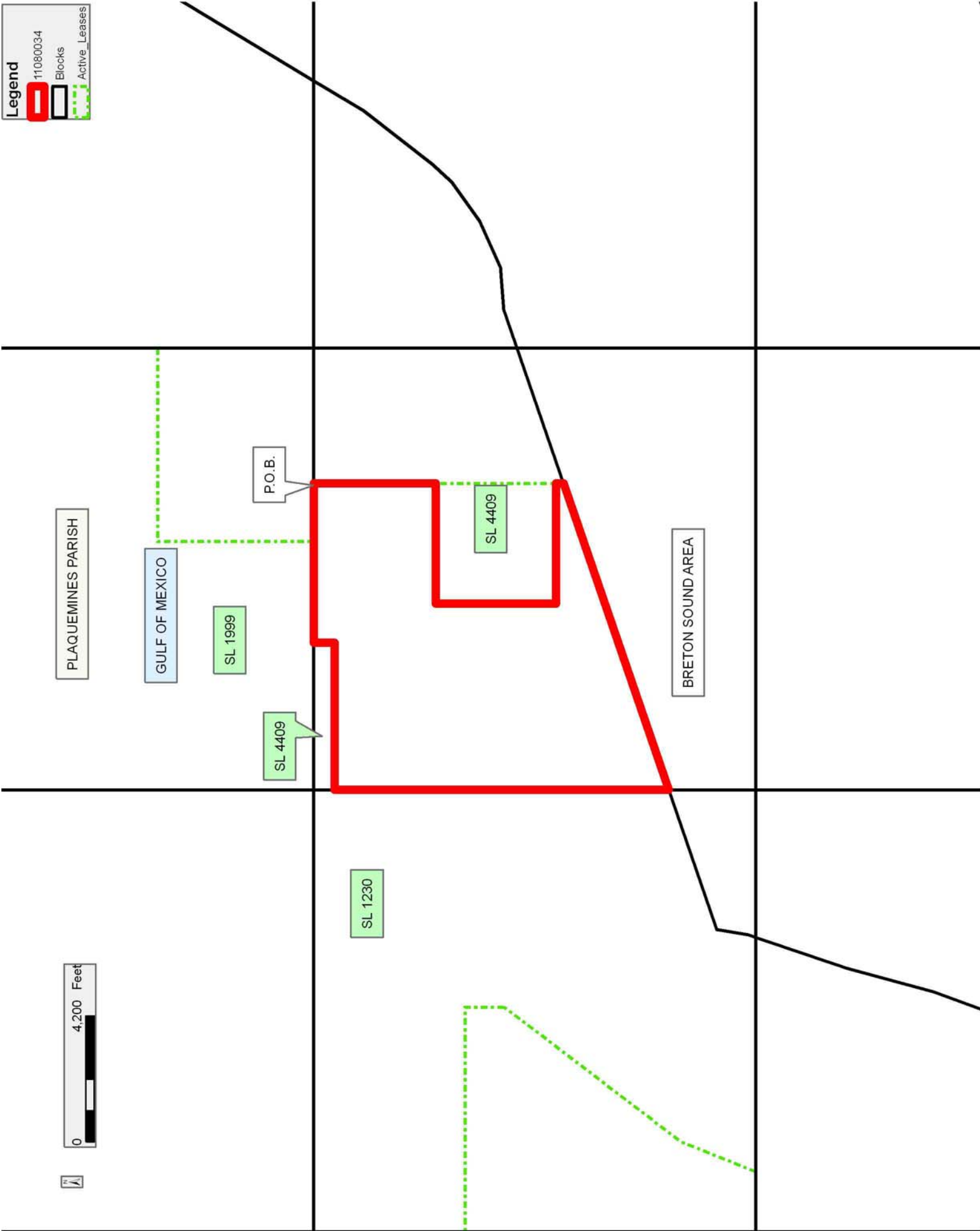
NOTE: It appears, according to our records, that a portion of this Tract is located within the restrictive safety fairway area as set out by the Corps of Engineers, U.S. Army and/or the restrictive anchorage area as set out by the U.S. Coast Guard.

Applicant: ACL EXPLORATION, INC

Bidder	Cash Payment	Price/ Acre	Rental	Oil	Gas	Other

Legend

- 11080034
- Blocks
- Active_Leases



TRACT 42225 - Plaquemines Parish, Louisiana

All of the lands now or formerly constituting the beds and bottoms of all water bodies of every nature and description as to which title is vested in the State of Louisiana, together with all islands arising therein and other lands formed by accretion or by reliction, where allowed by law, excepting tax adjudicated lands, and not presently under mineral lease on August 10, 2011, situated in Plaquemines Parish, Louisiana, and more particularly described as follows: Beginning at a point said to be the Northwest corner of Tract B-1 of the Price Case Judgment, having Coordinates of X = 2,634,365.99 and Y = 260,067.00; thence North 89 degrees 00 minutes 25 seconds East 1,363.97 feet along the North boundary of said Tract B-1 of the Price Case Judgment to a point on the Northern boundary of State Lease No. 17236, as amended, having Coordinates of X = 2,635,729.75 and Y = 260,090.64; thence along the boundary of said State Lease No. 17236 the following courses: South 69 degrees 22 minutes 35 seconds West 84.14 feet to a point of having Coordinates of X = 2,635,651.00 and Y = 260,061.00; South 69 degrees 34 minutes 02 seconds West 108.85 feet to a point of having Coordinates of X = 2,635,549.00 and Y = 260,023.00; South 70 degrees 37 minutes 33 seconds West 96.46 feet to a point of having Coordinates of X = 2,635,458.00 and Y = 259,991.00; South 72 degrees 18 minutes 56 seconds West 72.42 feet to a point of having Coordinates of X = 2,635,389.00 and Y = 259,969.00; South 73 degrees 24 minutes 07 seconds West 108.52 feet to a point of having Coordinates of X = 2,635,285.00 and Y = 259,938.00; South 75 degrees 45 minutes 46 seconds West 69.12 feet to a point of having Coordinates of X = 2,635,218.00 and Y = 259,921.00; South 75 degrees 57 minutes 50 seconds West 74.22 feet to a point of having Coordinates of X = 2,635,146.00 and Y = 259,903.00; South 80 degrees 56 minutes 32 seconds West 69.87 feet to a point of having Coordinates of X = 2,635,077.00 and Y = 259,892.00; South 79 degrees 50 minutes 45 seconds West 68.07 feet to a point of having Coordinates of X = 2,635,010.00 and Y = 259,880.00; South 82 degrees 59 minutes 55 seconds West 57.43 feet to a point of having Coordinates of X = 2,634,953.00 and Y = 259,873.00; South 85 degrees 04 minutes 22 seconds West 58.22 feet to a point of having Coordinates of X = 2,634,895.00 and Y = 259,868.00; South 86 degrees 49 minutes 13 seconds West 72.11 feet to a point of having Coordinates of X = 2,634,823.00 and Y = 259,864.00; North 89 degrees 08 minutes 42 seconds West 67.01 feet to a point of having Coordinates of X = 2,634,756.00 and Y = 259,865.00; North 87 degrees 47 minutes 51 seconds West 52.04 feet to a point of having Coordinates of X = 2,634,704.00 and Y = 259,867.00; North 84 degrees 05 minutes 38 seconds West 58.31 feet to a point of having Coordinates of X = 2,634,646.00 and Y = 259,873.00; North 83 degrees 39 minutes 35 seconds West 63.39 feet to a point of having Coordinates of X = 2,634,583.00 and Y = 259,880.00; North 79 degrees 54 minutes 09 seconds West 74.15 feet to a point of having Coordinates of X = 2,634,510.00 and Y = 259,893.00; North 78 degrees 27 minutes 12 seconds West 94.92 feet to a point of having Coordinates of X = 2,634,417.00 and Y = 259,912.00; North 76 degrees 09 minutes 33 seconds West 71.06 feet to a point of having Coordinates of X = 2,634,348.00 and Y = 259,929.00 and North 73 degrees 54 minutes 33 seconds West 29.94 feet to a point said to be on the Western boundary of said Tract B-1 of the Price Case Judgment, having Coordinates of X = 2,634,319.23 and Y = 259,937.30; thence

North 19 degrees 49 minutes 25 seconds East 137.87 feet along the Western boundary of said Tract B-1 of the Price Case Judgment to the point of beginning, containing approximately 4.80 gross acres and approximately **1.92 net acres**, all as more particularly outlined on a plat on file in the Office of Mineral Resources, Department of Natural Resources. All bearings, distances and coordinates are based on Louisiana Coordinate System of 1927, (North or South Zone), where applicable.

NOTE: The above description of the Tract nominated for lease has been provided and corrected, where required, exclusively by the nomination party. Any mineral lease selected from this Tract and awarded by the Louisiana State Mineral and Energy Board shall be without warranty of any kind, either express, implied, or statutory, including, but not limited to, the implied warranties of merchantability and fitness for a particular purpose. Should the mineral lease awarded by the Louisiana State Mineral and Energy Board be subsequently modified, cancelled or abrogated due to the existence of conflicting leases, operating agreements, private claims or other future obligations or conditions which may affect all or any portion of the leased Tract, it shall not relieve the Lessee of the obligation to pay any bonus due thereon to the Louisiana State Mineral and Energy Board, nor shall the Louisiana State Mineral and Energy Board be obligated to refund any consideration paid by the Lessor prior to such modification, cancellation, or abrogation, including, but not limited to, bonuses, rentals and royalties.

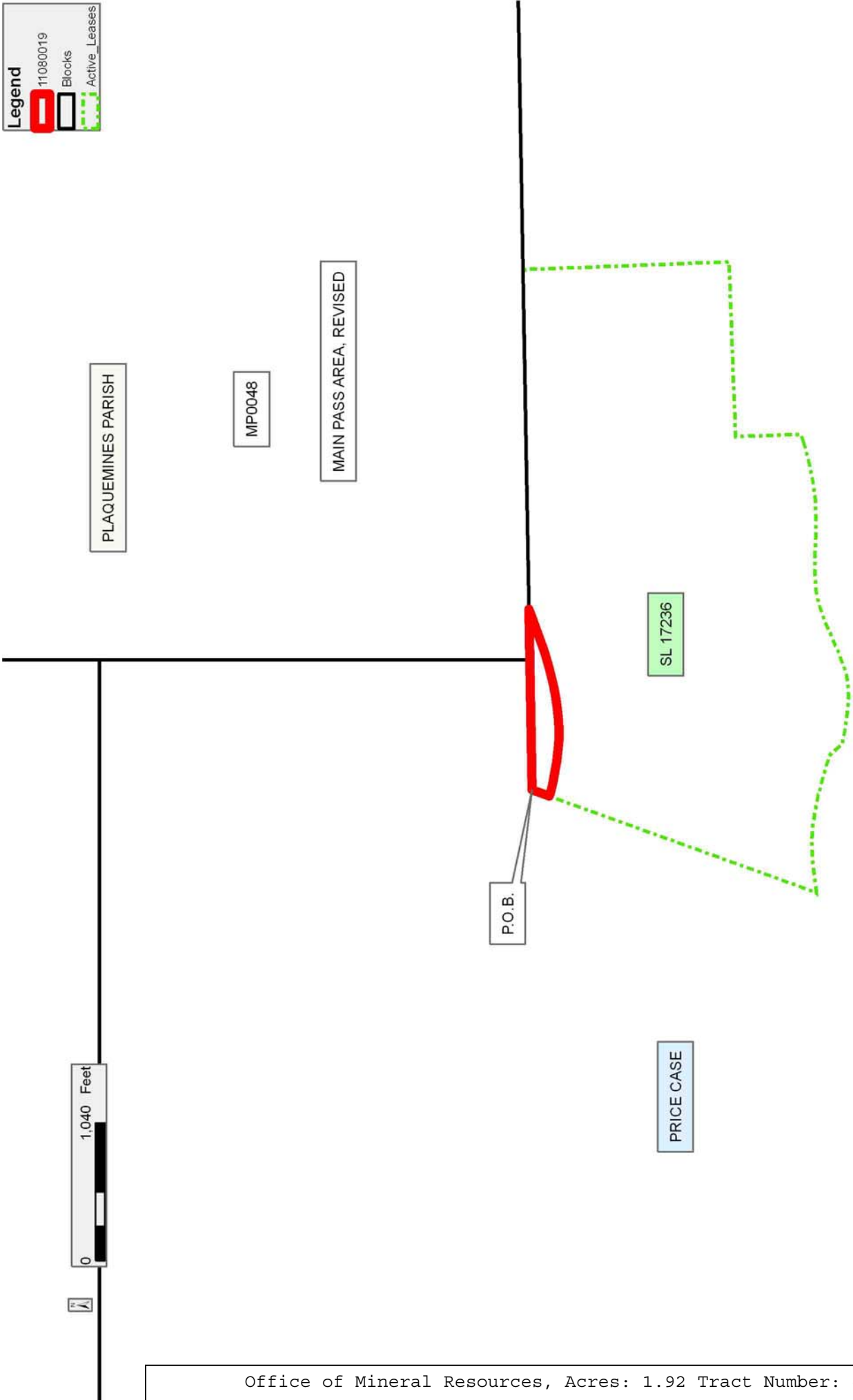
NOTE: The State of Louisiana does hereby reserve, and this lease shall be subject to, the imprescriptible right of surface use in the nature of a servitude in favor of the Department of Natural Resources, including its Offices and Commissions, for the sole purpose of implementing, constructing, servicing and maintaining approved coastal zone management and/or restoration projects. Utilization of any and all rights derived under this lease by the mineral lessee, its agents, successors or assigns, shall not interfere with nor hinder the reasonable surface use by the Department of Natural Resources, its Offices or Commissions, as herein above reserved.

Applicant: ACADIAN LAND SERVICES, L.L.C.

Bidder	Cash Payment	Price/ Acre	Rental	Oil	Gas	Other

Legend

- 11080019
- Blocks
- Active_Leases



TRACT 42226 - Portion of Blocks 54, 84, and 85, Main Pass Area, Revised, Plaquemines Parish, Louisiana

All of the lands now or formerly constituting the beds and bottoms of all water bodies of every nature and description as to which title is vested in the State of Louisiana, together with all islands arising therein and other lands formed by accretion or by reliction, where allowed by law, excepting tax adjudicated lands, and not presently under mineral lease on August 10, 2011, situated in Plaquemines Parish, Louisiana, and more particularly described as follows: Beginning at a point being the Northwest corner of State Lease No. 20548 having Coordinates of X = 2,691,076.00 and Y = 246,708.00; thence West approximately 9,499 feet to a point on the boundary of State Lease No. 1610 having a Coordinate of Y = 246,708.00; thence Northwesterly and Westerly along the boundary of said State Lease No. 1610 to a point of intersection with a North-South line having a Coordinate of X = 2,679,940.00; thence North approximately 6,608 feet to a point on the North line of Block 85, Main Pass Area, Revised having a Coordinate of X = 2,679,940.00; thence along the North line of said Block 85 approximately 1,802 feet to a point being its Northernmost corner; thence East approximately 2,537 feet to a point of intersection with the Louisiana Coastline, as decreed by the Supreme Court of the United States, as determined by a Special Master appointed therein, in litigation styled United States v. State of Louisiana et al No. 9 Original, in 1975; thence Southeasterly on a straight line to a point having Coordinates of X = 2,688,235 and Y = 252,215; thence Southeasterly on a straight line to a point having Coordinates of X = 2,689,305 and Y = 250,395; thence Southeasterly on a straight line to the Northeast corner of said State Lease No. 20548 having Coordinates of X = 2,691,983.47 and Y = 246,703.02; thence North 89 degrees 41 minutes 08 seconds West 907.49 feet to the Point of Beginning, containing approximately **1,552 acres, LESS AND EXCEPT** that portion, if any, of State Lease No. 1610, State Lease No. 20548 and State Lease No. 20538, all as more particularly outlined on a plat on file in the Office of Mineral Resources, Department of Natural Resources. All bearings, distances and coordinates are based on Louisiana Coordinate System of 1927, (North or South Zone), where applicable.

NOTE: The above description of the Tract nominated for lease has been provided and corrected, where required, exclusively by the nomination party. Any mineral lease selected from this Tract and awarded by the Louisiana State Mineral and Energy Board shall be without warranty of any kind, either express, implied, or statutory, including, but not limited to, the implied warranties of merchantability and fitness for a particular purpose. Should the mineral lease awarded by the Louisiana State Mineral and Energy Board be subsequently modified, cancelled or abrogated due to the existence of conflicting leases, operating agreements, private claims or other future obligations or conditions which may affect all or any portion of the leased Tract, it shall not relieve the Lessee of the obligation to pay any bonus due thereon to the Louisiana State Mineral and Energy Board, nor shall the Louisiana State Mineral and Energy Board be obligated to refund any consideration paid by the Lessor prior to such

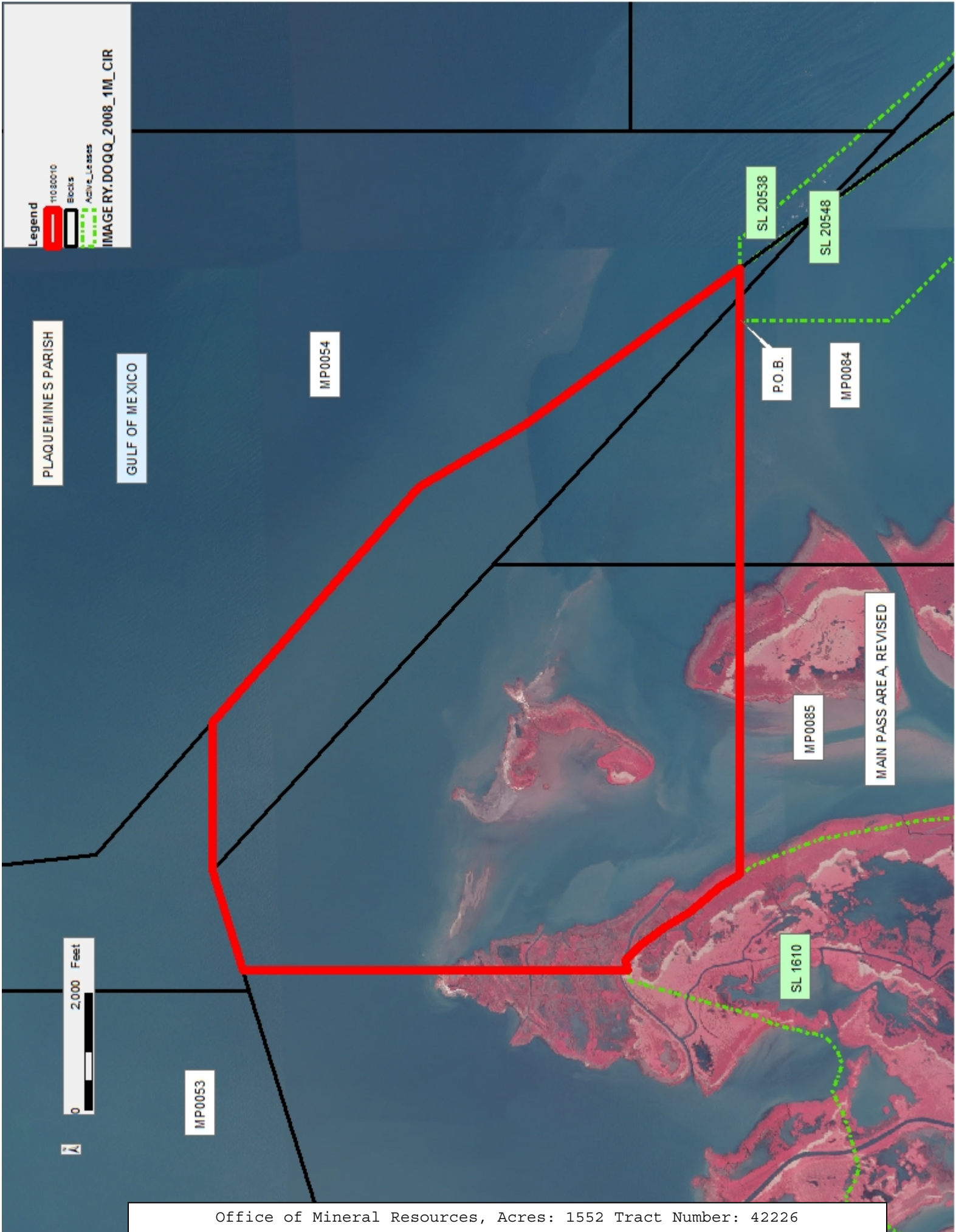
modification, cancellation, or abrogation, including, but not limited to, bonuses, rentals and royalties.

NOTE: The State of Louisiana does hereby reserve, and this lease shall be subject to, the imprescriptible right of surface use in the nature of a servitude in favor of the Department of Natural Resources, including its Offices and Commissions, for the sole purpose of implementing, constructing, servicing and maintaining approved coastal zone management and/or restoration projects. Utilization of any and all rights derived under this lease by the mineral lessee, its agents, successors or assigns, shall not interfere with nor hinder the reasonable surface use by the Department of Natural Resources, its Offices or Commissions, as herein above reserved.

NOTE: This tract is located in an area designated by the Louisiana Legislature or the Wildlife and Fisheries Commission as a Public Oyster Seed Ground, Reservation, or area of Calcasieu or Sabine Lake. Proposed projects occurring in these areas will be evaluated on a case by case basis by Louisiana Department of Wildlife & Fisheries. Modifications to proposed project features including, but not limited to, access routes, well sites, flowlines, and appurtenant structures maybe required by the Louisiana Department of Wildlife and Fisheries. In addition, compensatory mitigation will be required to offset unavoidable habitat impacts.

Applicant: ROBERT A. SCHROEDER, INC.

Bidder	Cash Payment	Price/ Acre	Rental	Oil	Gas	Other



TRACT 42227 - Portion of Block 85, Main Pass Area, Revised, Plaquemines Parish, Louisiana

All of the lands now or formerly constituting the beds and bottoms of all water bodies of every nature and description as to which title is vested in the State of Louisiana, together with all islands arising therein and other lands formed by accretion or by reliction, where allowed by law, excepting tax adjudicated lands, and not presently under mineral lease on August 10, 2011, situated in Plaquemines Parish, Louisiana, and more particularly described as follows: Beginning at a point being the Northwest corner of Block 85, Main Pass Area, Revised; thence Northerly approximately 7,360 feet along the Northern line of said Block 85 to a point of intersection with a North-South line having a coordinate of X = 2,679,940.00; thence South approximately 6,608 feet to a point on the Northern boundary of State Lease No. 1610 having a Coordinate of X = 2,679,940.00; thence meander Southwesterly along the boundary of said State Lease No. 1610 to a point on the West line of said Block 85; thence Northerly approximately 10,266 feet to the Point of Beginning, containing approximately **1,155 acres, LESS AND EXCEPT** that portion, if any of State Lease No. 195, as amended and State Lease No. 1610, all as more particularly outlined on a plat on file in the Office of Mineral Resources, Department of Natural Resources. All bearings, distances and coordinates are based on Louisiana Coordinate System of 1927, (North or South Zone), where applicable.

NOTE: The above description of the Tract nominated for lease has been provided and corrected, where required, exclusively by the nomination party. Any mineral lease selected from this Tract and awarded by the Louisiana State Mineral and Energy Board shall be without warranty of any kind, either express, implied, or statutory, including, but not limited to, the implied warranties of merchantability and fitness for a particular purpose. Should the mineral lease awarded by the Louisiana State Mineral and Energy Board be subsequently modified, cancelled or abrogated due to the existence of conflicting leases, operating agreements, private claims or other future obligations or conditions which may affect all or any portion of the leased Tract, it shall not relieve the Lessee of the obligation to pay any bonus due thereon to the Louisiana State Mineral and Energy Board, nor shall the Louisiana State Mineral and Energy Board be obligated to refund any consideration paid by the Lessor prior to such modification, cancellation, or abrogation, including, but not limited to, bonuses, rentals and royalties.

NOTE: The State of Louisiana does hereby reserve, and this lease shall be subject to, the imprescriptible right of surface use in the nature of a servitude in favor of the Department of Natural Resources, including its Offices and Commissions, for the sole purpose of implementing, constructing, servicing and maintaining approved coastal zone management and/or restoration projects. Utilization of any and all rights derived under this lease by the mineral lessee, its agents, successors or assigns, shall not interfere with nor hinder the reasonable surface use by the

Department of Natural Resources, its Offices or Commissions, as herein above reserved.

NOTE: This tract is located in an area designated by the Louisiana Legislature or the Wildlife and Fisheries Commission as a Public Oyster Seed Ground, Reservation, or area of Calcasieu or Sabine Lake. Proposed projects occurring in these areas will be evaluated on a case by case basis by Louisiana Department of Wildlife & Fisheries. Modifications to proposed project features including, but not limited to, access routes, well sites, flowlines, and appurtenant structures maybe required by the Louisiana Department of Wildlife and Fisheries. In addition, compensatory mitigation will be required to offset unavoidable habitat impacts.

Applicant: ROBERT A. SCHROEDER, INC.

Bidder	Cash Payment	Price/ Acre	Rental	Oil	Gas	Other

