

**TRACT 42239 - Natchitoches Parish, Louisiana**

All of the mineral rights only under land adjudicated to and acquired by the State of Louisiana in and through a proper tax sale, and subsequently alienated by the State which retained the mineral rights thereto, and which is not under valid mineral lease from the State of Louisiana on August 10, 2011, situated in Natchitoches Parish, Louisiana, and being more fully described as follows: The Southeast Quarter of the Northwest Quarter (SE1/4 of NW1/4) of Section 28, Township 6 North, Range 4 West, Natchitoches Parish, Louisiana, being the same property adjudicated to the State of Louisiana, in the name of Taylor and Whittington for nonpayment of 1922 taxes and acquired by J. Merrell in Homestead No. 580, Patent No. 15178-44-303, the above described tract containing approximately **40 acres**, all as more particularly outlined on a plat on file in the Office of Mineral Resources, Department of Natural Resources. All bearings, distances and coordinates are based on Louisiana Coordinate System of 1927, (North or South Zone), where applicable.

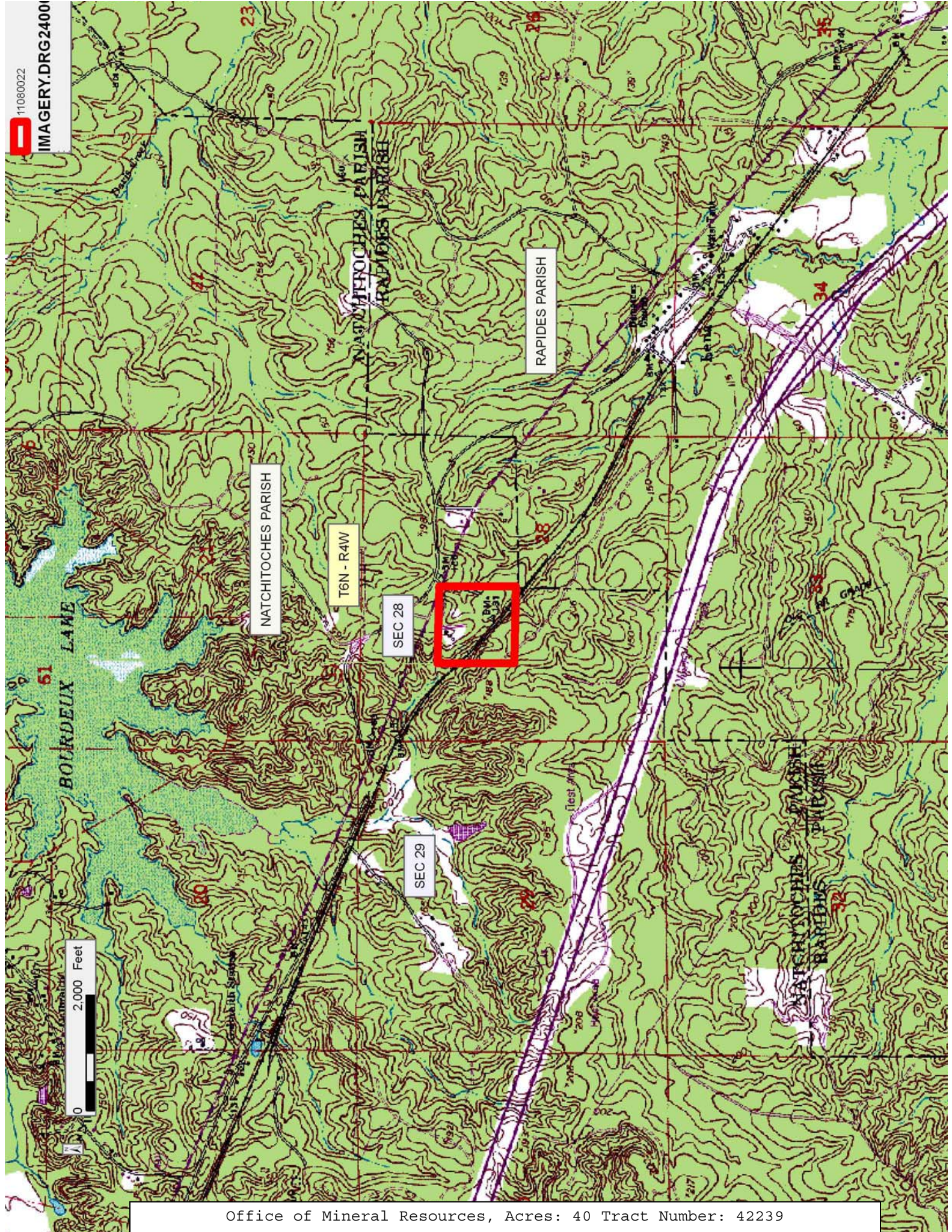
NOTE: The above description of the Tract nominated for lease has been provided and corrected, where required, exclusively by the nomination party. Any mineral lease selected from this Tract and awarded by the Louisiana State Mineral and Energy Board shall be without warranty of any kind, either express, implied, or statutory, including, but not limited to, the implied warranties of merchantability and fitness for a particular purpose. Should the mineral lease awarded by the Louisiana State Mineral and Energy Board be subsequently modified, cancelled or abrogated due to the existence of conflicting leases, operating agreements, private claims or other future obligations or conditions which may affect all or any portion of the leased Tract, it shall not relieve the Lessee of the obligation to pay any bonus due thereon to the Louisiana State Mineral and Energy Board, nor shall the Louisiana State Mineral and Energy Board be obligated to refund any consideration paid by the Lessor prior to such modification, cancellation, or abrogation, including, but not limited to, bonuses, rentals and royalties.

NOTE: No surface activity on this tract undertaken in conjunction with any operations under any mineral lease given on this tract will be allowed without prior approval of the surface owner and further, no such right of surface use shall be deemed to have been given as part of any mineral lease by the State of Louisiana on this tract.

Bidder	Cash Payment	Price/Acre	Rental	Oil	Gas	Other

Applicant: THEOPHILUS OIL, GAS & LAND SERVICES, LLC







**TRACT 42240 - Avoyelles Parish, Louisiana**

All of the mineral rights only under land adjudicated to and acquired by the State of Louisiana in and through a proper tax sale, and subsequently alienated by the State which retained the mineral rights thereto, and which is not under valid mineral lease from the State of Louisiana on August 10, 2011, situated in Avoyelles Parish, Louisiana, and being more fully described as follows: 10 acres, South half (S/2) of the Southeast quarter (SE/4) of the Southeast quarter (SE/4), Section 4, Township 1 South, Range 5 East, subject to easement on 4.69 acres acquired by US Government on August 5, 1948, Parish of Avoyelles, being the same lands adjudicated to the State of Louisiana for unpaid 1921 taxes in the name of Poreus Lemoine; the mineral rights reserved to the State of Louisiana when sold to P. Florian Dufour under Patent #161447, containing approximately **10 acres**, all as more particularly outlined on a plat on file in the Office of Mineral Resources, Department of Natural Resources. All bearings, distances and coordinates are based on Louisiana Coordinate System of 1927, (North or South Zone), where applicable.

NOTE: The above description of the Tract nominated for lease has been provided and corrected, where required, exclusively by the nomination party. Any mineral lease selected from this Tract and awarded by the Louisiana State Mineral and Energy Board shall be without warranty of any kind, either express, implied, or statutory, including, but not limited to, the implied warranties of merchantability and fitness for a particular purpose. Should the mineral lease awarded by the Louisiana State Mineral and Energy Board be subsequently modified, cancelled or abrogated due to the existence of conflicting leases, operating agreements, private claims or other future obligations or conditions which may affect all or any portion of the leased Tract, it shall not relieve the Lessee of the obligation to pay any bonus due thereon to the Louisiana State Mineral and Energy Board, nor shall the Louisiana State Mineral and Energy Board be obligated to refund any consideration paid by the Lessor prior to such modification, cancellation, or abrogation, including, but not limited to, bonuses, rentals and royalties.

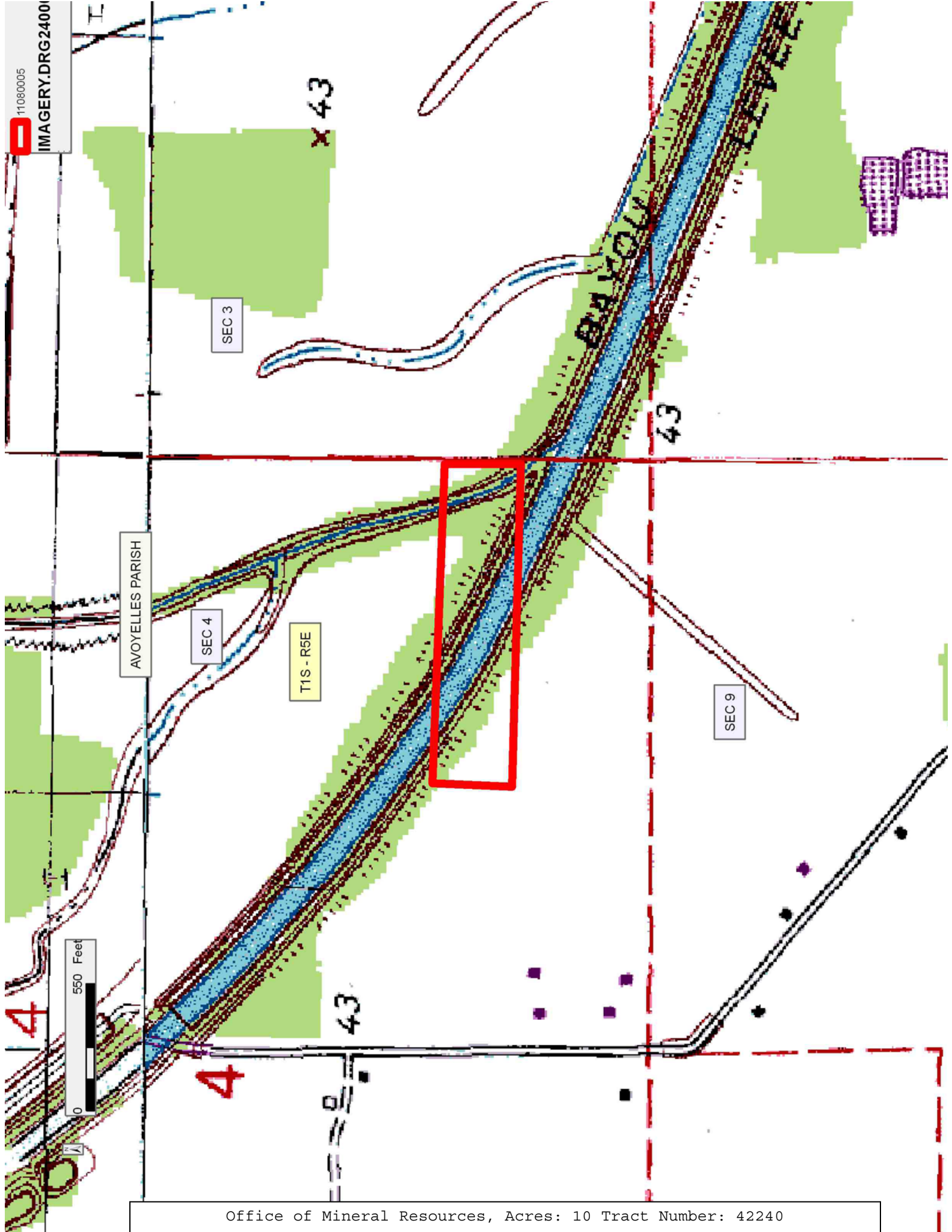
NOTE: No surface activity on this tract undertaken in conjunction with any operations under any mineral lease given on this tract will be allowed without prior approval of the surface owner and further, no such right of surface use shall be deemed to have been given as part of any mineral lease by the State of Louisiana on this tract.

Applicant: LESLIE M. COOPER

Bidder	Cash Payment	Price/Acre	Rental	Oil	Gas	Other

11080005

IMAGERY.DRG24001



**TRACT 42241 - Avoyelles Parish, Louisiana**

All of the mineral rights only under land adjudicated to and acquired by the State of Louisiana in and through a proper tax sale, and subsequently alienated by the State which retained the mineral rights thereto, and which is not under valid mineral lease from the State of Louisiana on August 10, 2011, situated in Avoyelles Parish, Louisiana, and being more fully described as follows: A certain tract of land, containing 41.82 acres, situated in Ward 7, Avoyelles Parish, Louisiana, in the Southwest Quarter (SW ¼) and partly in the Southeast quarter (SE ¼) of Section 35, Township One (1) South, Range Six (6) East; the said tract measuring 3048.05 feet along its northern boundary, 2519.94 feet along its southern boundary and 625 feet along its western boundary, with its eastern boundary following the thread of Turners Bayou Canal, said dimensions being in accordance with a Plat of Survey by Lloyd G. Frost, Consulting Engineer, recorded in Plat Book 9, page 51A, Records of Avoyelles Parish, Louisiana; said tract being bounded on the North by A.B. Chunn, formerly W.B. Allen, South by Roy O. Martin and the tract described below, East by the thread of Turners Bayou Canal, and West by Roy O. Martin; it being the same tract acquired by C. Roy Linzay in the name of Arthur L. Brand from the State of Louisiana by deed dated December 18, 1943, recorded in Alienation Book A-202, under Entry No. 196,810, of the Conveyance Records of Avoyelles Parish, Louisiana, being the same lands adjudicated to the State of Louisiana for unpaid 1916 taxes in the name of Arthur L Brand; the mineral rights reserved to the State of Louisiana when sold to Mr. C Roy Linzay under Patent #14043, containing approximately **41.82 acres**, all as more particularly outlined on a plat on file in the Office of Mineral Resources, Department of Natural Resources. All bearings, distances and coordinates are based on Louisiana Coordinate System of 1927, (North or South Zone), where applicable.

NOTE: The above description of the Tract nominated for lease has been provided and corrected, where required, exclusively by the nomination party. Any mineral lease selected from this Tract and awarded by the Louisiana State Mineral and Energy Board shall be without warranty of any kind, either express, implied, or statutory, including, but not limited to, the implied warranties of merchantability and fitness for a particular purpose. Should the mineral lease awarded by the Louisiana State Mineral and Energy Board be subsequently modified, cancelled or abrogated due to the existence of conflicting leases, operating agreements, private claims or other future obligations or conditions which may affect all or any portion of the leased Tract, it shall not relieve the Lessee of the obligation to pay any bonus due thereon to the Louisiana State Mineral and Energy Board, nor shall the Louisiana State Mineral and Energy Board be obligated to refund any consideration paid by the Lessor prior to such modification, cancellation, or abrogation, including, but not limited to, bonuses, rentals and royalties.

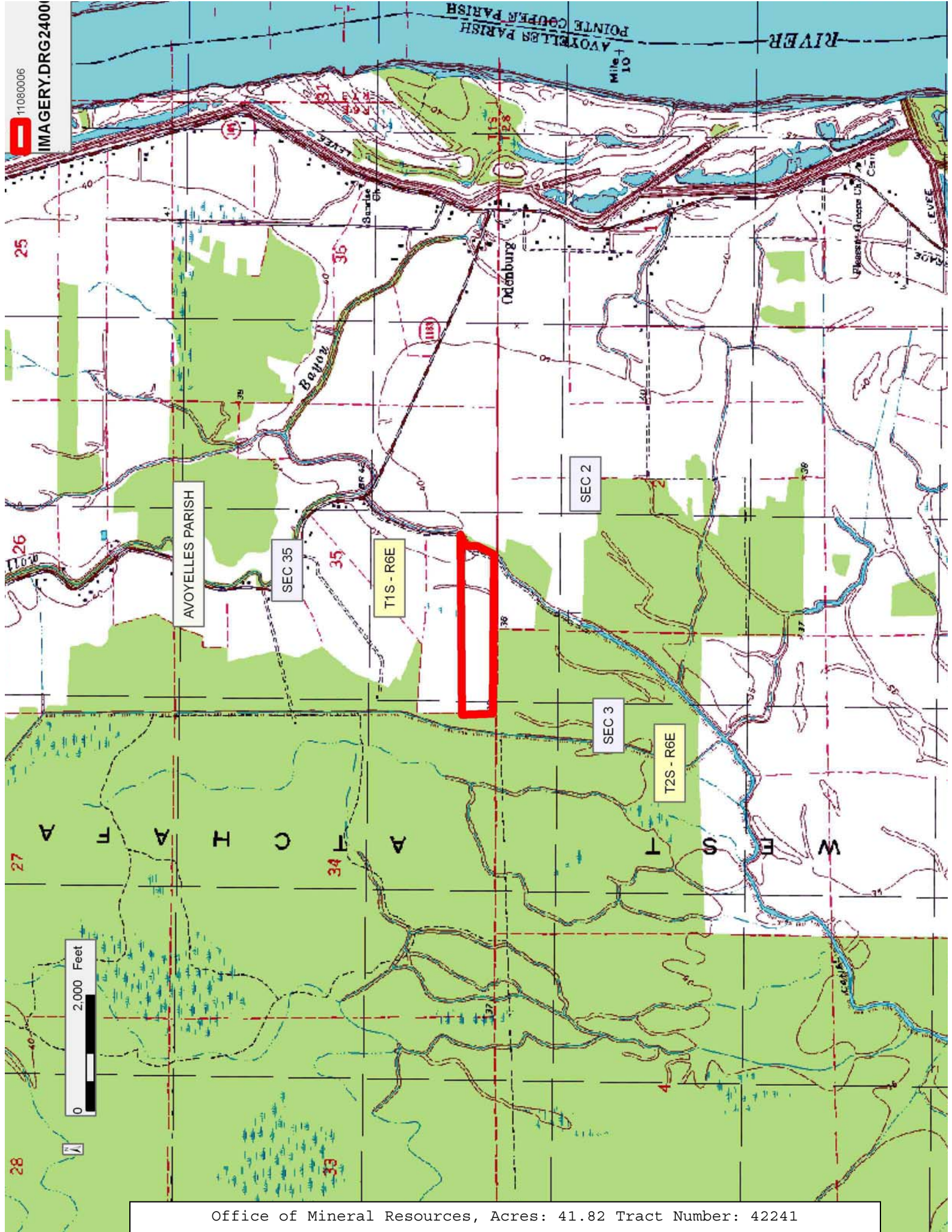
NOTE: No surface activity on this tract undertaken in conjunction with any operations under any mineral lease given on this tract will be allowed

without prior approval of the surface owner and further, no such right of surface use shall be deemed to have been given as part of any mineral lease by the State of Louisiana on this tract.

Applicant: LESLIE M. COOPER

Bidder	Cash Payment	Price/Acre	Rental	Oil	Gas	Other





11080006  
IMAGERY.DRG24001

AVOYELLES PARISH

Odénburg

RIVER

AVOYELLES PARISH  
POINTE COUPE PARISH

Mile + 10

25

27

28

SEC 35

T1S - R6E

SEC 2

SEC 3

T2S - R6E

2,000 Feet

Office of Mineral Resources, Acres: 41.82 Tract Number: 42241

**TRACT 42242 - Avoyelles Parish, Louisiana**

All of the mineral rights only under land adjudicated to and acquired by the State of Louisiana in and through a proper tax sale, and subsequently alienated by the State which retained the mineral rights thereto, and which is not under valid mineral lease from the State of Louisiana on August 10, 2011, situated in Avoyelles Parish, Louisiana, and being more fully described as follows: A certain tract or parcel of land situated near Atchafalaya River in Avoyelles Parish containing Eighteen acres being lot 8 of a survey made by W. A. Missish, surveyor, and contiguous to a forty (40) acre tract being a part of the Northeast quarter (NE ¼) of Section 2, Township 2 South Range 6 East. Being the same lands adjudicated to the State of Louisiana for unpaid 1925 taxes in the name of Georgiana Marshall; the mineral rights reserved to the State of Louisiana when sold to C. Roy Linzay under Patent #14044, containing approximately **18 acres**, all as more particularly outlined on a plat on file in the Office of Mineral Resources, Department of Natural Resources. All bearings, distances and coordinates are based on Louisiana Coordinate System of 1927, (North or South Zone), where applicable.

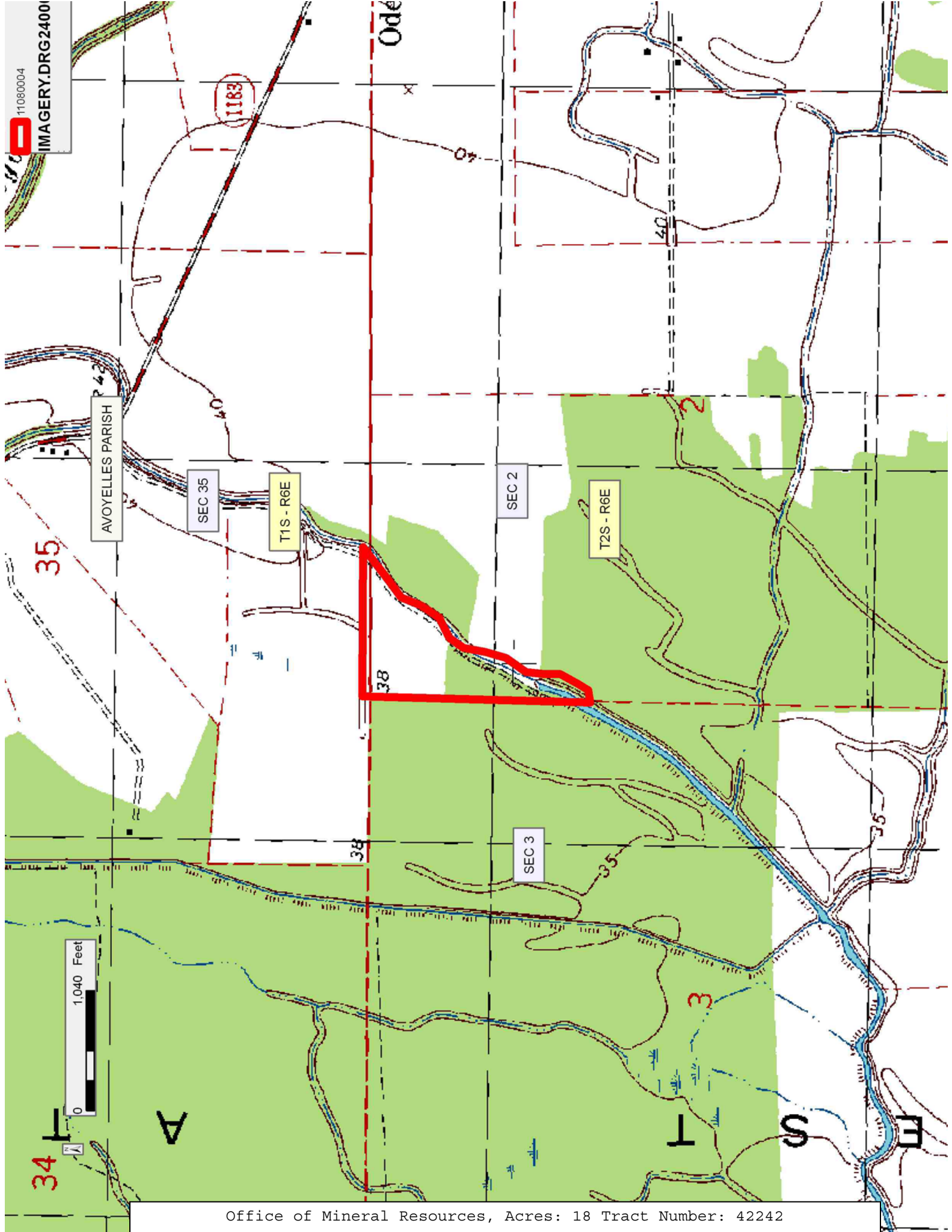
NOTE: The above description of the Tract nominated for lease has been provided and corrected, where required, exclusively by the nomination party. Any mineral lease selected from this Tract and awarded by the Louisiana State Mineral and Energy Board shall be without warranty of any kind, either express, implied, or statutory, including, but not limited to, the implied warranties of merchantability and fitness for a particular purpose. Should the mineral lease awarded by the Louisiana State Mineral and Energy Board be subsequently modified, cancelled or abrogated due to the existence of conflicting leases, operating agreements, private claims or other future obligations or conditions which may affect all or any portion of the leased Tract, it shall not relieve the Lessee of the obligation to pay any bonus due thereon to the Louisiana State Mineral and Energy Board, nor shall the Louisiana State Mineral and Energy Board be obligated to refund any consideration paid by the Lessor prior to such modification, cancellation, or abrogation, including, but not limited to, bonuses, rentals and royalties.

NOTE: No surface activity on this tract undertaken in conjunction with any operations under any mineral lease given on this tract will be allowed without prior approval of the surface owner and further, no such right of surface use shall be deemed to have been given as part of any mineral lease by the State of Louisiana on this tract.

Applicant: LESLIE M. COOPER

Bidder	Cash Payment	Price/Acre	Rental	Oil	Gas	Other





11080004  
IMAGERY.DRG24001

AVOYELLES PARISH

Odé

1183

SEC 35

T1S - R6E

SEC 2

T2S - R6E

35

38

SEC 3

35

38

3

1,040 Feet

34