

TRACT 42307 - Red River Parish, Louisiana

All of the lands now or formerly constituting the beds and bottoms of all water bodies of every nature and description as to which title is vested in the State of Louisiana, together with all islands arising therein and other lands formed by accretion or by reliction, where allowed by law, excepting tax adjudicated lands, and not presently under mineral lease on October 12, 2011, situated in Red River Parish, Louisiana, and more particularly described as follows: Beginning at a point having Coordinates of X = 1,739,950.00 and Y = 524,130.00; thence East 5,575.30 feet to a point on the Western boundary of State Lease No. 19833, as amended, having Coordinates of X = 1,745,525.30 and Y = 524,130.00; thence along the boundary of said State Lease No. 19833, as amended, the following courses: South 00 degrees 48 minutes 42 seconds West 96.31 feet to a point having Coordinates of X = 1,745,523.94 and Y = 524,033.70 and East 196.06 feet to a point having Coordinates of X = 1,745,720.00 and Y = 524,033.70; thence South 5,475.06 feet to a point on the Northern boundary of State Lease No. 19836, as amended, having Coordinates of X = 1,745,720.00 and Y = 518,558.64; thence along the boundary of said State Lease No. 19836, as amended, the following courses: North 89 degrees 13 minutes 17 seconds West 262.80 feet to a point having Coordinates of X = 1,745,457.22 and Y = 518,562.21 and South 00 degrees 35 minutes 47 seconds West 152.22 feet to a point having Coordinates of X = 1,745,455.64 and Y = 518,410.00; thence West 5,505.64 feet to a point having Coordinates of X = 1,739,950.00 and Y = 518,410.00; thence North 5,720.00 feet to Point of Beginning, **LESS AND EXCEPT** that portion, if any, of State Lease No. 19833, as amended, and State Lease No. 19836, as amended, contained within the above described tract, containing approximately **15 acres**, all as more particularly outlined on a plat on file in the Office of Mineral Resources, Department of Natural Resources. All bearings, distances and coordinates are based on Louisiana Coordinate System of 1927, (North or South Zone), where applicable.

NOTE: The above description of the Tract nominated for lease has been provided and corrected, where required, exclusively by the nomination party. Any mineral lease selected from this Tract and awarded by the Louisiana State Mineral and Energy Board shall be without warranty of any kind, either express, implied, or statutory, including, but not limited to, the implied warranties of merchantability and fitness for a particular purpose. Should the mineral lease awarded by the Louisiana State Mineral and Energy Board be subsequently modified, cancelled or abrogated due to the existence of conflicting leases, operating agreements, private claims or other future obligations or conditions which may affect all or any portion of the leased Tract, it shall not relieve the Lessee of the obligation to pay any bonus due thereon to the Louisiana State Mineral and Energy Board, nor shall the Louisiana State Mineral and Energy Board be obligated to refund any consideration paid by the Lessor prior to such modification, cancellation, or abrogation, including, but not limited to, bonuses, rentals and royalties.

Applicant: LARKIN OIL & GAS

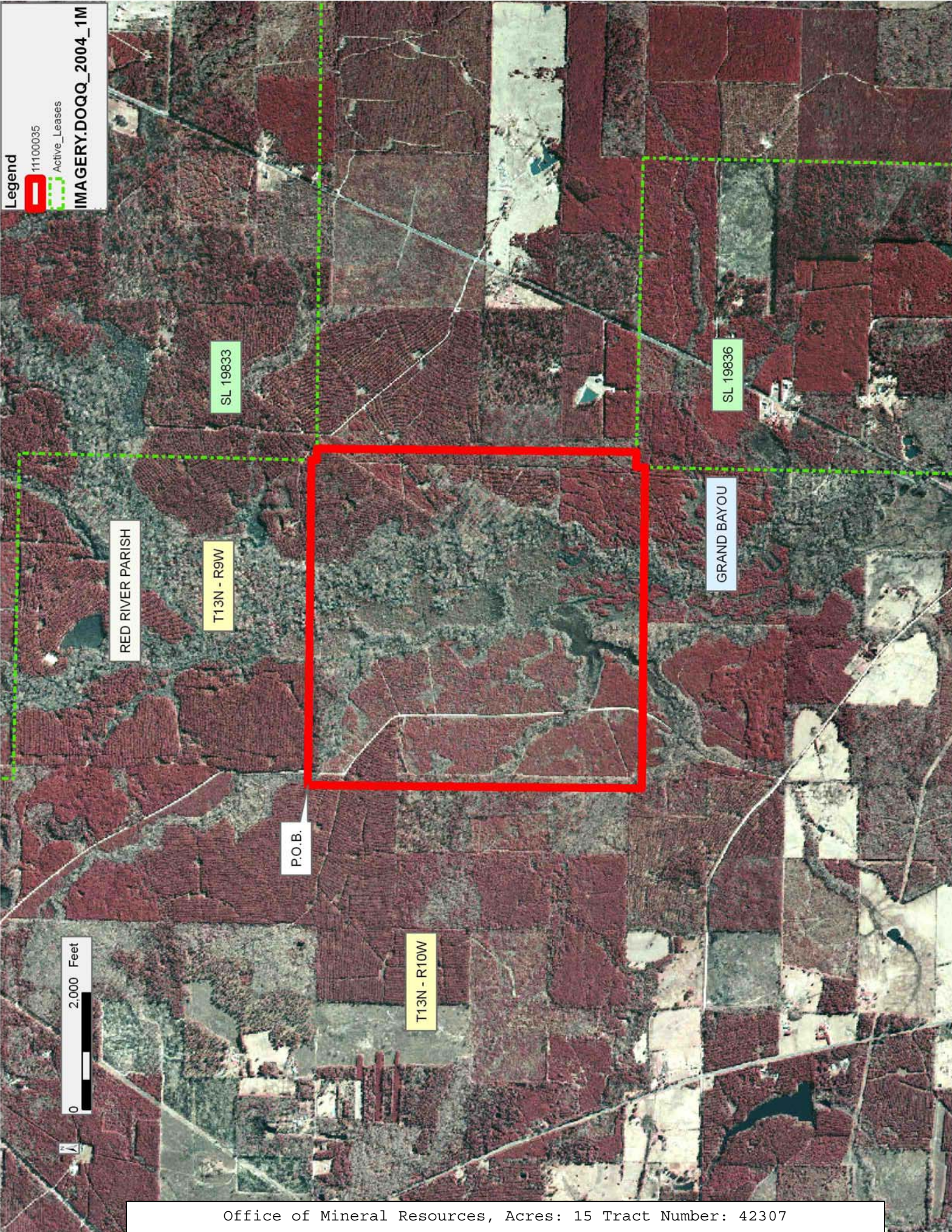
Bidder	Cash Payment	Price/ Acre	Rental	Oil	Gas	Other

Legend

11100035

Active_Leases

IMAGERY.DOQQ_2004_1M



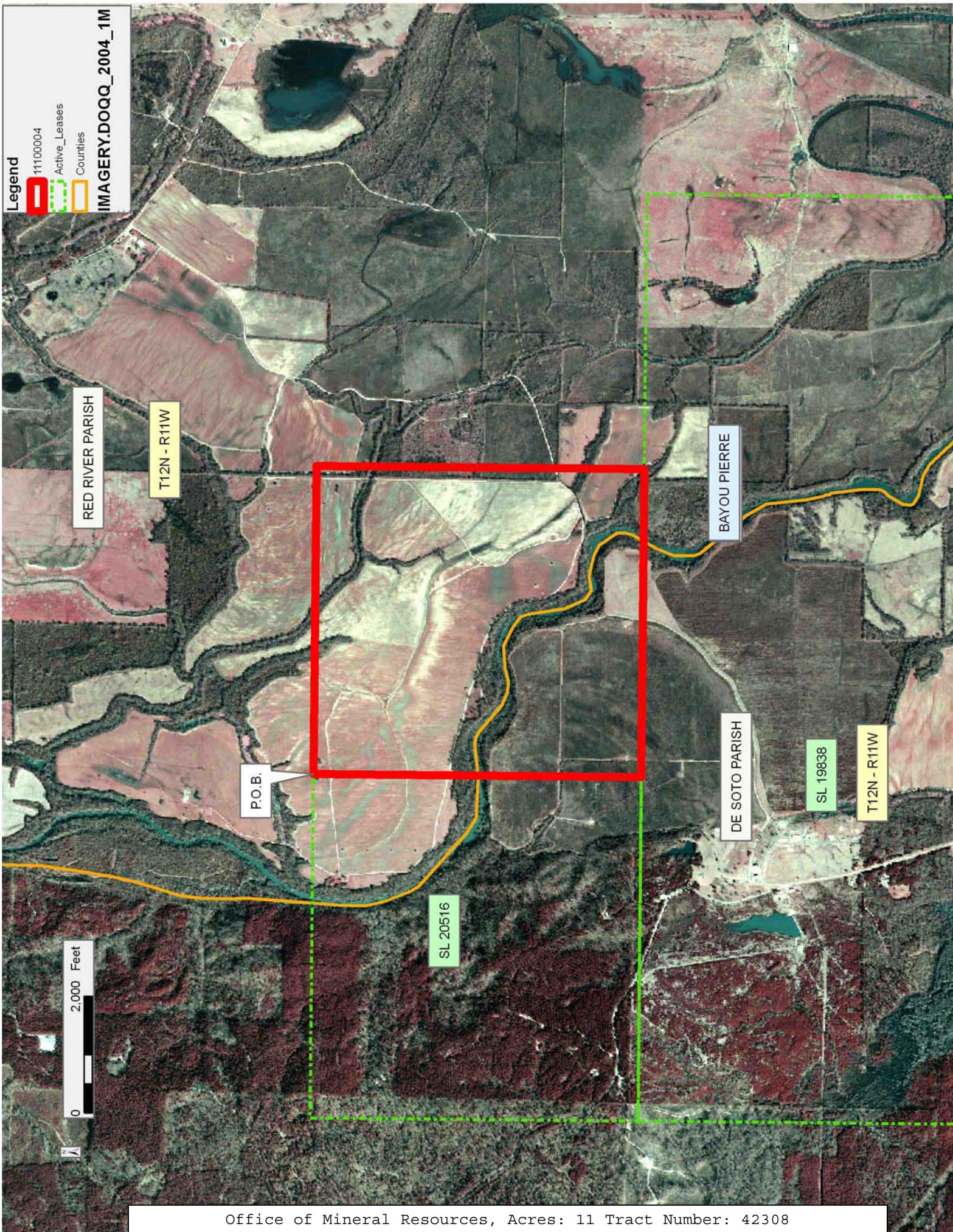
TRACT 42308 - De Soto and Red River Parishes, Louisiana

All of the lands now or formerly constituting the beds and bottoms of all water bodies of every nature and description as to which title is vested in the State of Louisiana, together with all islands arising therein and other lands formed by accretion or by reliction, where allowed by law, excepting tax adjudicated lands, and not presently under mineral lease on October 12, 2011, situated in De Soto and Red River Parishes, Louisiana, and more particularly described as follows: Beginning at the Northeast corner of State Lease No. 20516 having Coordinates of X = 1,698,201.00 and Y = 498,914.00; thence East 5,279.00 feet to a point having Coordinates of X = 1,703,480.00 and Y = 498,914.00; thence South 5,614.00 feet to a point on the North line of State Lease No. 19838 having Coordinates of X = 1,703,480.00 and Y = 493,300.00 thence West 5,279.00 feet along the North line of said State Lease No. 19838 to the Southeast corner of said State Lease No. 20516 having Coordinates of X = 1,698,201.00 and Y = 493,300.00; thence North 5,614.00 feet along the East line of said State Lease No. 20516 to the Point of Beginning, containing approximately **11 acres**, all as more particularly outlined on a plat on file in the Office of Mineral Resources, Department of Natural Resources. All bearings, distances and coordinates are based on Louisiana Coordinate System of 1927, (North or South Zone), where applicable.

NOTE: The above description of the Tract nominated for lease has been provided and corrected, where required, exclusively by the nomination party. Any mineral lease selected from this Tract and awarded by the Louisiana State Mineral and Energy Board shall be without warranty of any kind, either express, implied, or statutory, including, but not limited to, the implied warranties of merchantability and fitness for a particular purpose. Should the mineral lease awarded by the Louisiana State Mineral and Energy Board be subsequently modified, cancelled or abrogated due to the existence of conflicting leases, operating agreements, private claims or other future obligations or conditions which may affect all or any portion of the leased Tract, it shall not relieve the Lessee of the obligation to pay any bonus due thereon to the Louisiana State Mineral and Energy Board, nor shall the Louisiana State Mineral and Energy Board be obligated to refund any consideration paid by the Lessor prior to such modification, cancellation, or abrogation, including, but not limited to, bonuses, rentals and royalties.

Applicant: LARKIN OIL & GAS

Bidder	Cash Payment	Price/ Acre	Rental	Oil	Gas	Other



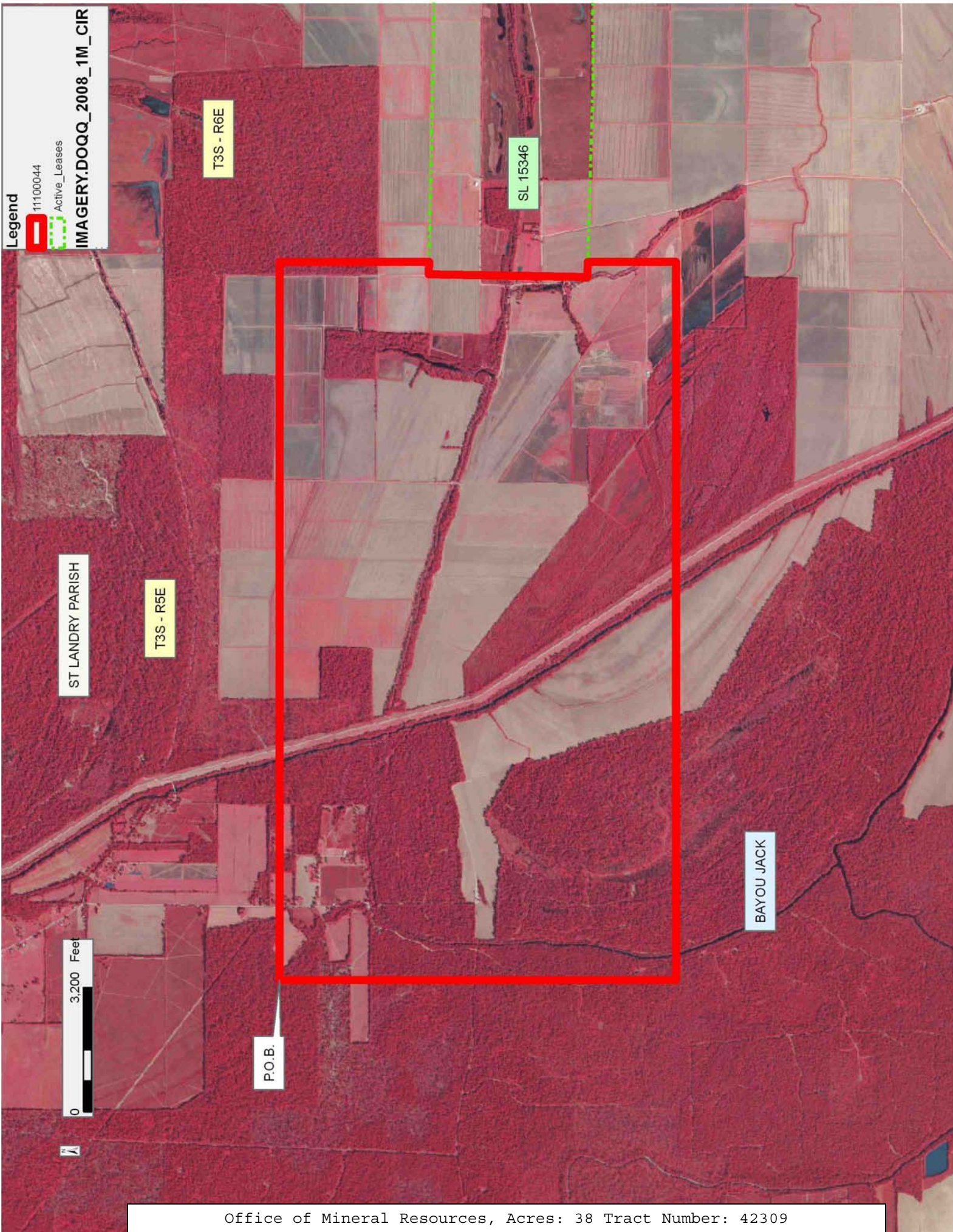
TRACT 42309 - St. Landry Parish, Louisiana

All of the lands now or formerly constituting the beds and bottoms of all water bodies of every nature and description as to which title is vested in the State of Louisiana, together with all islands arising therein and other lands formed by accretion or by reliction, where allowed by law, excepting tax adjudicated lands, and not presently under mineral lease on October 12, 2011, situated in St. Landry Parish, Louisiana, and more particularly described as follows: Beginning at a point having Coordinates of X = 1,803,269.04 and Y = 779,421.20; thence East 18,480.00 feet to a point having Coordinates of X = 1,821,749.04 and Y = 779,421.20; thence South approximately 3,851 feet to a point on the North boundary of State Lease No. 15346; thence along the boundaries of said State Lease No. 15346 the following courses: Westerly approximately 322 feet to its Northwest corner, Southerly approximately 4,076 feet to its Southwest corner and Easterly approximately 392 feet to a point on its Southern boundary; thence Southerly approximately 2,268 feet to a point having Coordinates of X = 1,821,749.04 and Y = 769,219.43; thence West 18,480.00 feet to a point having Coordinates of X = 1,803,269.04 and Y = 769,219.43; thence North 10,201.77 feet to the point of beginning, **LESS AND EXCEPT** any right, title, and interest in lands owned by and not under lease from the State of Louisiana, on behalf of the St. Landry Parish School Board, situated in Section 16, Township 3 South, Range 5 East, St. Landry Parish, Louisiana, contained within the above described tract, containing approximately **38 acres**, all as more particularly outlined on a plat on file in the Office of Mineral Resources, Department of Natural Resources. All bearings, distances and coordinates are based on Louisiana Coordinate System of 1927, (North or South Zone), where applicable.

NOTE: The above description of the Tract nominated for lease has been provided and corrected, where required, exclusively by the nomination party. Any mineral lease selected from this Tract and awarded by the Louisiana State Mineral and Energy Board shall be without warranty of any kind, either express, implied, or statutory, including, but not limited to, the implied warranties of merchantability and fitness for a particular purpose. Should the mineral lease awarded by the Louisiana State Mineral and Energy Board be subsequently modified, cancelled or abrogated due to the existence of conflicting leases, operating agreements, private claims or other future obligations or conditions which may affect all or any portion of the leased Tract, it shall not relieve the Lessee of the obligation to pay any bonus due thereon to the Louisiana State Mineral and Energy Board, nor shall the Louisiana State Mineral and Energy Board be obligated to refund any consideration paid by the Lessor prior to such modification, cancellation, or abrogation, including, but not limited to, bonuses, rentals and royalties.

Applicant: STAFF OFFICE OF MINERAL RESOURCES

Bidder	Cash Payment	Price/ Acre	Rental	Oil	Gas	Other



TRACT 42310 - Calcasieu Parish, Louisiana

All of the lands now or formerly constituting the beds and bottoms of all water bodies of every nature and description as to which title is vested in the State of Louisiana, together with all islands arising therein and other lands formed by accretion or by reliction, where allowed by law, excepting tax adjudicated lands, and not presently under mineral lease on October 12, 2011, situated in Calcasieu Parish, Louisiana, and more particularly described as follows: Beginning at a point having Coordinates of X = 1,369,089.00 and Y = 628,715.00; thence East 1,711.43 feet to a point on the Western boundary of State Lease No. 18452, as amended, having Coordinates of X = 1,370,800.43 and Y = 628,715.00; thence South 28 degrees 28 minutes 52 seconds West 75.21 feet along the Western boundary of said State Lease No. 18452, as amended, to its Southwest corner, said corner also being the most Northerly Southwest corner of Operating Agreement No. 0277, having Coordinates of X = 1,370,764.57 and Y = 628,648.89; thence along the boundary of said Operating Agreement No. 0277 the following courses: South 28 degrees 28 minutes 52 seconds West 536.52 feet to a point having Coordinates of X = 1,370,508.72 and Y = 628,177.30; South 89 degrees 21 minutes 05 seconds East 2,345.95 feet to a point having Coordinates of X = 1,372,854.52 and Y = 628,150.75; and North 28 degrees 28 minutes 52 seconds East 641.95 feet to a point having Coordinates of X = 1,373,160.64 and Y = 628,715.00; thence East 1,397.36 feet to a point having Coordinates of X = 1,374,558.00 and Y = 628,715.00; thence South 2,819.00 feet to a point having Coordinates of X = 1,374,558.00 and Y = 625,896.00; thence West approximately 504 feet to a point on the Eastern boundary of State Lease No. 15502, as amended; thence along the boundary of said State Lease No. 15502, as amended, the following courses: North approximately 254 feet to a point being its Northeast corner and West along its Northern boundary approximately 4,963 feet to a point of intersection with a North-South line having a Coordinate of X = 1,369,089.00; thence North approximately 2,563 feet to the Point of Beginning, **LESS AND EXCEPT** that portion, if any of State Lease No. 18452, as amended, State Lease No. 15502, as amended and Operating Agreement No. 0277 contained within the above described tract, containing approximately **9 acres**, all as more particularly outlined on a plat on file in the Office of Mineral Resources, Department of Natural Resources. All bearings, distances and coordinates are based on Louisiana Coordinate System of 1927, (North or South Zone), where applicable.

NOTE: The above description of the Tract nominated for lease has been provided and corrected, where required, exclusively by the nomination party. Any mineral lease selected from this Tract and awarded by the Louisiana State Mineral and Energy Board shall be without warranty of any kind, either express, implied, or statutory, including, but not limited to, the implied warranties of merchantability and fitness for a particular purpose. Should the mineral lease awarded by the Louisiana State Mineral and Energy Board be subsequently modified, cancelled or abrogated due to the existence of conflicting leases, operating agreements, private claims or other future obligations or conditions which may affect all or any

portion of the leased Tract, it shall not relieve the Lessee of the obligation to pay any bonus due thereon to the Louisiana State Mineral and Energy Board, nor shall the Louisiana State Mineral and Energy Board be obligated to refund any consideration paid by the Lessor prior to such modification, cancellation, or abrogation, including, but not limited to, bonuses, rentals and royalties.

NOTE: The above Tract is located upon a restricted scenic river and all operations in this area must be conducted in strict conformity with the regulations of the Corps of Engineers, U.S. Army.

Applicant: HEP ENERGY, INC.

Bidder	Cash Payment	Price/ Acre	Rental	Oil	Gas	Other

Legend

11100005

Active_Leases

IMAGERY.DOQQ_2008_1M_CIR

CALCASIEU PARISH

BECKWITH CREEK

AO 0277

SL 18452

SL 15502

T8S - R9W

P.O.B.

T8S - R10W

A scale bar showing 0 to 1,040 feet and a north arrow pointing towards the top of the map.

Office of Mineral Resources, Acres: 9 Tract Number: 42310

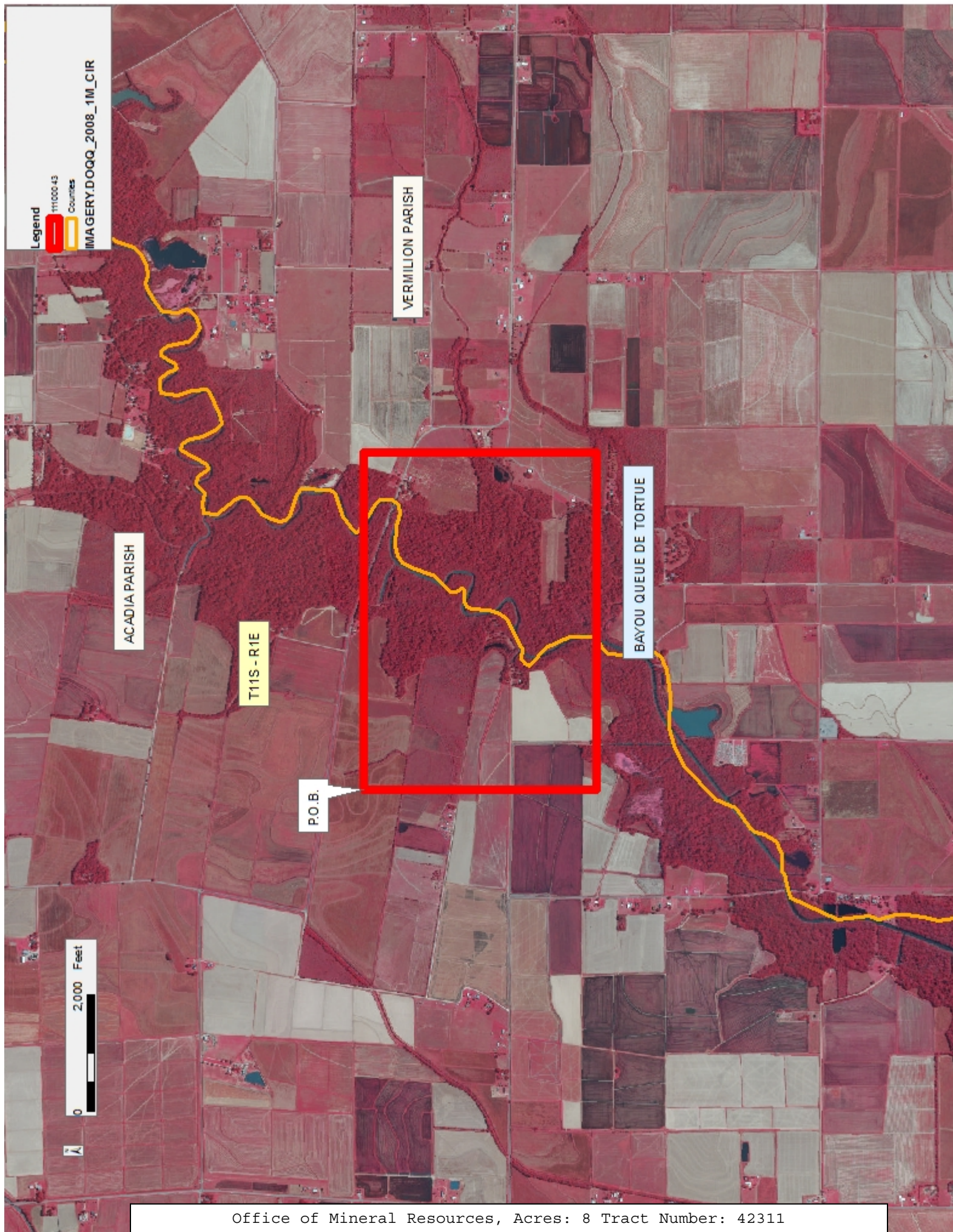
TRACT 42311 - Acadia and Vermilion Parishes, Louisiana

All of the lands now or formerly constituting the beds and bottoms of all water bodies of every nature and description as to which title is vested in the State of Louisiana, together with all islands arising therein and other lands formed by accretion or by reliction, where allowed by law, excepting tax adjudicated lands, and not presently under mineral lease on October 12, 2011, situated in Acadia and Vermilion Parishes, Louisiana, and more particularly described as follows: Beginning at a point having Coordinates of X = 1,682,063.56 and Y = 528,289.63; thence East 5,800.00 feet to a point having Coordinates of X = 1,687,863.56 and Y = 528,289.63; thence South 4,000.00 feet to a point having Coordinates of X = 1,687,863.56 and Y = 524,289.63; thence West 5,800.00 feet to a point having Coordinates of X = 1,682,063.56 and Y = 524,289.63; thence North 4,000.00 feet to the point of beginning, containing approximately **8 acres**, all as more particularly outlined on a plat on file in the Office of Mineral Resources, Department of Natural Resources. All bearings, distances and coordinates are based on Louisiana Coordinate System of 1927, (North or South Zone), where applicable.

NOTE: The above description of the Tract nominated for lease has been provided and corrected, where required, exclusively by the nomination party. Any mineral lease selected from this Tract and awarded by the Louisiana State Mineral and Energy Board shall be without warranty of any kind, either express, implied, or statutory, including, but not limited to, the implied warranties of merchantability and fitness for a particular purpose. Should the mineral lease awarded by the Louisiana State Mineral and Energy Board be subsequently modified, cancelled or abrogated due to the existence of conflicting leases, operating agreements, private claims or other future obligations or conditions which may affect all or any portion of the leased Tract, it shall not relieve the Lessee of the obligation to pay any bonus due thereon to the Louisiana State Mineral and Energy Board, nor shall the Louisiana State Mineral and Energy Board be obligated to refund any consideration paid by the Lessor prior to such modification, cancellation, or abrogation, including, but not limited to, bonuses, rentals and royalties.

Applicant: PATRICK L. DONOHUE PETROLEUM PROPERTIES, INC.

Bidder	Cash Payment	Price/ Acre	Rental	Oil	Gas	Other



TRACT 42312 - Iberia Parish, Louisiana

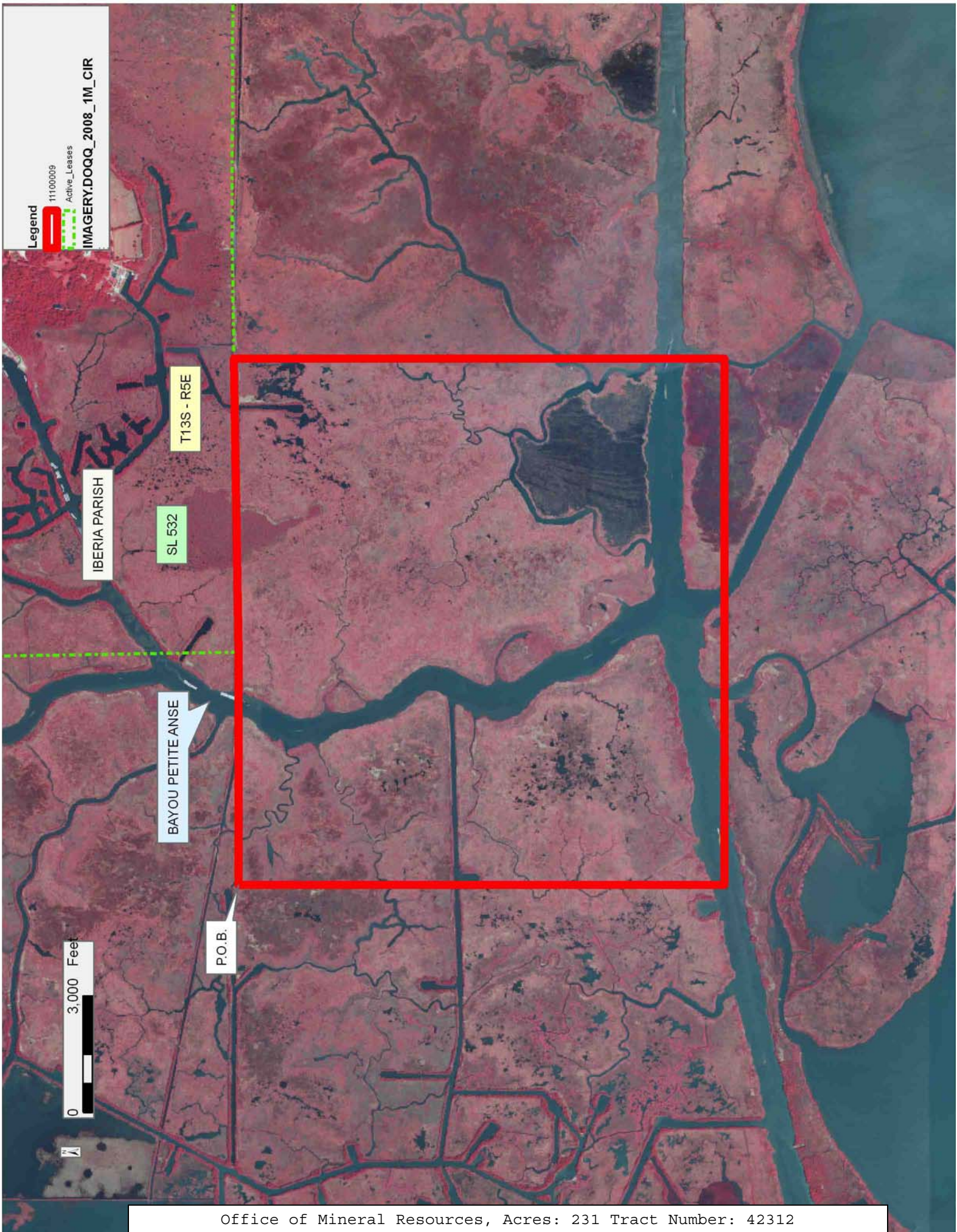
All of the lands now or formerly constituting the beds and bottoms of all water bodies of every nature and description as to which title is vested in the State of Louisiana, together with all islands arising therein and other lands formed by accretion or by reliction, where allowed by law, excepting tax adjudicated lands, and not presently under mineral lease on October 12, 2011, situated in Iberia Parish, Louisiana, and more particularly described as follows: Beginning at a point having Coordinates of X = 1,803,282.96 and Y = 439,948.88; thence East approximately 5,983 feet to the southwest corner of State Lease No. 532, as amended; thence along the south boundary of said State Lease No. 532 Easterly approximately 7,548 feet to its southeast corner; thence South approximately 12,591 feet to a point having Coordinates of X = 1,816,812.84 and Y = 427,473.17; thence West 13,529.88 feet to a point having Coordinates of X = 1,803,282.96 and Y = 427,473.17; thence North 12,475.71 feet to the point of beginning, containing approximately **231 acres**, all as more particularly outlined on a plat on file in the Office of Mineral Resources, Department of Natural Resources. All bearings, distances and coordinates are based on Louisiana Coordinate System of 1927, (North or South Zone), where applicable.

NOTE: The above description of the Tract nominated for lease has been provided and corrected, where required, exclusively by the nomination party. Any mineral lease selected from this Tract and awarded by the Louisiana State Mineral and Energy Board shall be without warranty of any kind, either express, implied, or statutory, including, but not limited to, the implied warranties of merchantability and fitness for a particular purpose. Should the mineral lease awarded by the Louisiana State Mineral and Energy Board be subsequently modified, cancelled or abrogated due to the existence of conflicting leases, operating agreements, private claims or other future obligations or conditions which may affect all or any portion of the leased Tract, it shall not relieve the Lessee of the obligation to pay any bonus due thereon to the Louisiana State Mineral and Energy Board, nor shall the Louisiana State Mineral and Energy Board be obligated to refund any consideration paid by the Lessor prior to such modification, cancellation, or abrogation, including, but not limited to, bonuses, rentals and royalties.

NOTE: The State of Louisiana does hereby reserve, and this lease shall be subject to, the imprescriptible right of surface use in the nature of a servitude in favor of the Department of Natural Resources, including its Offices and Commissions, for the sole purpose of implementing, constructing, servicing and maintaining approved coastal zone management and/or restoration projects. Utilization of any and all rights derived under this lease by the mineral lessee, its agents, successors or assigns, shall not interfere with nor hinder the reasonable surface use by the Department of Natural Resources, its Offices or Commissions, as herein above reserved.

Applicant: LESLIE M. COOPER

Bidder	Cash Payment	Price/ Acre	Rental	Oil	Gas	Other



TRACT 42313 - Iberia Parish, Louisiana

All of the lands now or formerly constituting the beds and bottoms of all water bodies of every nature and description as to which title is vested in the State of Louisiana, together with all islands arising therein and other lands formed by accretion or by reliction, where allowed by law, excepting tax adjudicated lands, and not presently under mineral lease on October 12, 2011, situated in Iberia Parish, Louisiana, and more particularly described as follows: Beginning at a point having Coordinates of X = 1,810,067.01 and Y = 427,473.17; thence East 9,216.33 feet to a point having Coordinates of X = 1,819,283.34 and Y = 427,473.17; thence South 13,640.55 feet to a point having Coordinates of X = 1,819,283.34 and Y = 413,832.62; thence West 9,735.15 feet to a point having Coordinates of X = 1,809,548.19 and Y = 413,832.62; thence North 1,923.38 feet to a point on the south boundary of State Lease No. 19944 having Coordinates of X = 1,809,548.19 and Y = 415,756.00; thence along the boundary of said State Lease No. 19944 the following courses: East 1,852.81 feet to a point having Coordinates of X = 1,811,401.00 and Y = 415,756.00, North 4,565.00 feet to a point having Coordinates of X = 1,811,401.00 and Y = 420,321.00 and West 1,333.99 feet to a point on its north boundary having Coordinates of X = 1,810,067.01 and Y = 420,321.00; thence North 7,152.17 feet to the point of beginning, containing approximately **1,401 acres**, all as more particularly outlined on a plat on file in the Office of Mineral Resources, Department of Natural Resources. All bearings, distances and coordinates are based on Louisiana Coordinate System of 1927, (North or South Zone), where applicable.

NOTE: The above description of the Tract nominated for lease has been provided and corrected, where required, exclusively by the nomination party. Any mineral lease selected from this Tract and awarded by the Louisiana State Mineral and Energy Board shall be without warranty of any kind, either express, implied, or statutory, including, but not limited to, the implied warranties of merchantability and fitness for a particular purpose. Should the mineral lease awarded by the Louisiana State Mineral and Energy Board be subsequently modified, cancelled or abrogated due to the existence of conflicting leases, operating agreements, private claims or other future obligations or conditions which may affect all or any portion of the leased Tract, it shall not relieve the Lessee of the obligation to pay any bonus due thereon to the Louisiana State Mineral and Energy Board, nor shall the Louisiana State Mineral and Energy Board be obligated to refund any consideration paid by the Lessor prior to such modification, cancellation, or abrogation, including, but not limited to, bonuses, rentals and royalties.

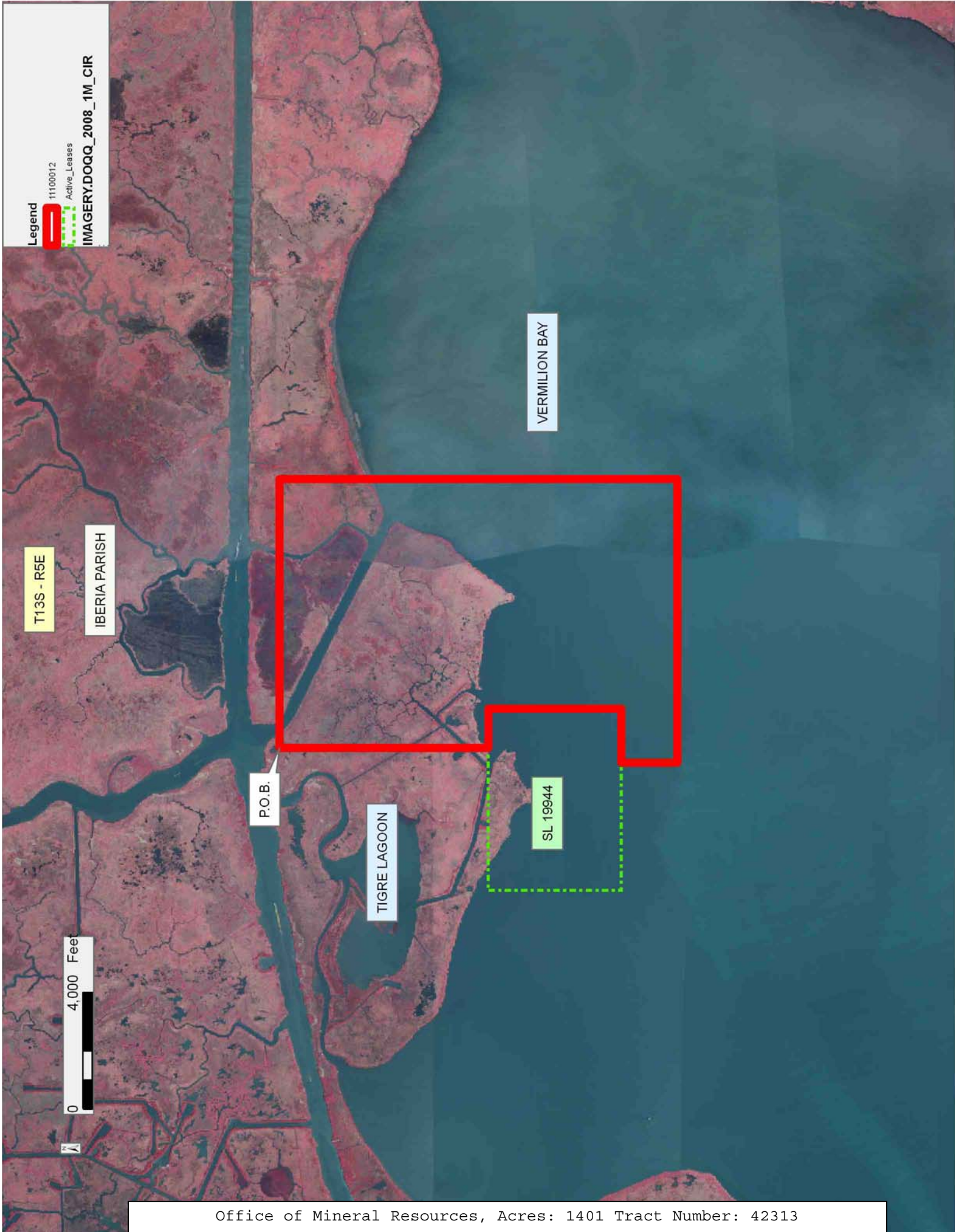
NOTE: The State of Louisiana does hereby reserve, and this lease shall be subject to, the imprescriptible right of surface use in the nature of a servitude in favor of the Department of Natural Resources, including its Offices and Commissions, for the sole purpose of implementing, constructing, servicing and maintaining approved coastal zone management and/or restoration projects. Utilization of any and all rights derived

under this lease by the mineral lessee, its agents, successors or assigns, shall not interfere with nor hinder the reasonable surface use by the Department of Natural Resources, its Offices or Commissions, as herein above reserved.

NOTE: This tract is located in an area designated by the Louisiana Legislature or the Wildlife and Fisheries Commission as a Public Oyster Seed Ground, Reservation, or area of Calcasieu or Sabine Lake. Proposed projects occurring in these areas will be evaluated on a case by case basis by Louisiana Department of Wildlife & Fisheries. Modifications to proposed project features including, but not limited to, access routes, well sites, flowlines, and appurtenant structures maybe required by the Louisiana Department of Wildlife and Fisheries. In addition, compensatory mitigation will be required to offset unavoidable habitat impacts.

Applicant: LESLIE M. COOPER

Bidder	Cash Payment	Price/ Acre	Rental	Oil	Gas	Other



TRACT 42314 - Iberia and Vermilion Parishes, Louisiana

All of the lands now or formerly constituting the beds and bottoms of all water bodies of every nature and description as to which title is vested in the State of Louisiana, together with all islands arising therein and other lands formed by accretion or by reliction, where allowed by law, excepting tax adjudicated lands, and not presently under mineral lease on October 12, 2011, situated in Iberia and Vermilion Parishes, Louisiana, and more particularly described as follows: Beginning at a point having Coordinates of X = 1,794,344.31 and Y = 427,473.17; thence East 5,644.37 feet to a point having Coordinates of X = 1,799,988.68 and Y = 427,473.17; thence South 13,640.55 feet to a point having Coordinates of X = 1,799,988.68 and Y = 413,832.62; thence West 5,644.37 feet to a point having Coordinates of X = 1,794,344.31 and Y = 413,832.62; thence North 00 degrees 12 minutes 46 seconds East 3,427.73 feet to the Southeast corner of State Lease No. 20181 having Coordinates of X = 1,794,357.04 and Y = 417,260.33; thence North along the east boundary of said State Lease No. 20181 5,539.67 feet to its Northeast corner having Coordinates of X = 1,794,357.04 and Y = 422,800.00; thence North 00 degrees 09 minutes 22 seconds West 4,673.19 feet to the point of beginning, containing approximately **1,308 acres**, all as more particularly outlined on a plat on file in the Office of Mineral Resources, Department of Natural Resources. All bearings, distances and coordinates are based on Louisiana Coordinate System of 1927, (North or South Zone), where applicable.

NOTE: The above description of the Tract nominated for lease has been provided and corrected, where required, exclusively by the nomination party. Any mineral lease selected from this Tract and awarded by the Louisiana State Mineral and Energy Board shall be without warranty of any kind, either express, implied, or statutory, including, but not limited to, the implied warranties of merchantability and fitness for a particular purpose. Should the mineral lease awarded by the Louisiana State Mineral and Energy Board be subsequently modified, cancelled or abrogated due to the existence of conflicting leases, operating agreements, private claims or other future obligations or conditions which may affect all or any portion of the leased Tract, it shall not relieve the Lessee of the obligation to pay any bonus due thereon to the Louisiana State Mineral and Energy Board, nor shall the Louisiana State Mineral and Energy Board be obligated to refund any consideration paid by the Lessor prior to such modification, cancellation, or abrogation, including, but not limited to, bonuses, rentals and royalties.

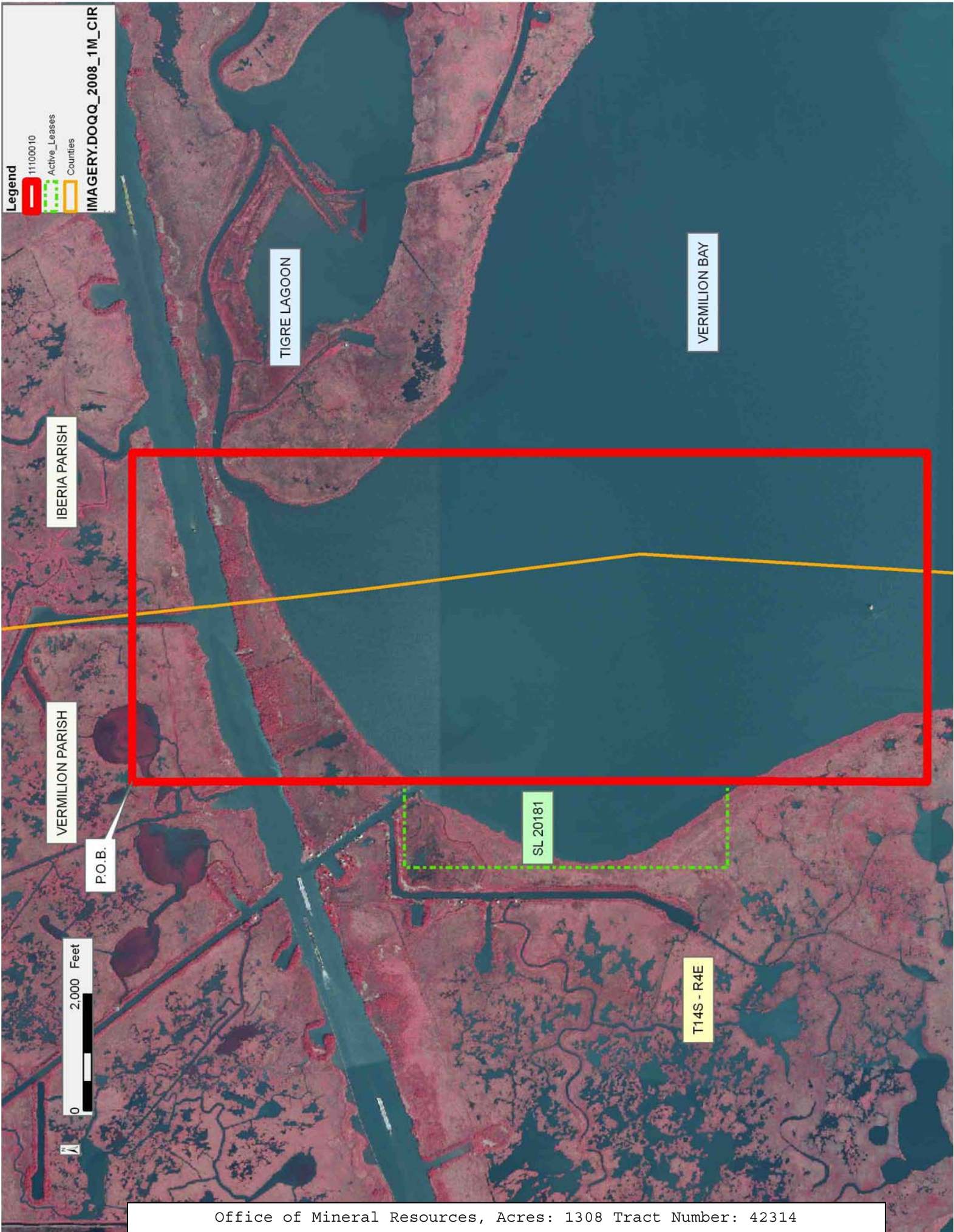
NOTE: The State of Louisiana does hereby reserve, and this lease shall be subject to, the imprescriptible right of surface use in the nature of a servitude in favor of the Department of Natural Resources, including its Offices and Commissions, for the sole purpose of implementing, constructing, servicing and maintaining approved coastal zone management and/or restoration projects. Utilization of any and all rights derived under this lease by the mineral lessee, its agents, successors or assigns, shall not interfere with nor hinder the reasonable surface use by the

Department of Natural Resources, its Offices or Commissions, as herein above reserved.

NOTE: This tract is located in an area designated by the Louisiana Legislature or the Wildlife and Fisheries Commission as a Public Oyster Seed Ground, Reservation, or area of Calcasieu or Sabine Lake. Proposed projects occurring in these areas will be evaluated on a case by case basis by Louisiana Department of Wildlife & Fisheries. Modifications to proposed project features including, but not limited to, access routes, well sites, flowlines, and appurtenant structures maybe required by the Louisiana Department of Wildlife and Fisheries. In addition, compensatory mitigation will be required to offset unavoidable habitat impacts.

Applicant: LESLIE M. COOPER

Bidder	Cash Payment	Price/ Acre	Rental	Oil	Gas	Other



TRACT 42315 - Iberia Parish, Louisiana

All of the lands now or formerly constituting the beds and bottoms of all water bodies of every nature and description as to which title is vested in the State of Louisiana, together with all islands arising therein and other lands formed by accretion or by reliction, where allowed by law, excepting tax adjudicated lands, and not presently under mineral lease on October 12, 2011, situated in Iberia Parish, Louisiana, and more particularly described as follows: Beginning at a point having Coordinates of X = 1,799,988.68 and Y = 427,473.17; thence East 10,078.33 feet to a point having Coordinates of X = 1,810,067.01 and Y = 427,473.17; thence South 7,152.17 feet to a point on the north boundary of State Lease No. 19944 having Coordinates of X = 1,810,067.01 and Y = 420,321.00; thence along the boundary of said State Lease No. 19944 the following courses: West 4,891.01 feet to a point having Coordinates of X = 1,805,176.00 and Y = 420,321.00, South 4,565.00 feet to a point having Coordinates of X = 1,805,176.00 and Y = 415,756.00 and East 4,372.19 feet to a point on its south boundary having Coordinates of X = 1,809,548.19 and Y = 415,756.00; thence South 1,923.38 feet to a point having Coordinates of X = 1,809,548.19 and Y = 413,832.62; thence West 9,559.51 feet to a point having Coordinates of X = 1,799,988.68 and Y = 413,832.62; thence North 13,640.55 feet to the point of beginning, containing approximately **1,588 acres**, all as more particularly outlined on a plat on file in the Office of Mineral Resources, Department of Natural Resources. All bearings, distances and coordinates are based on Louisiana Coordinate System of 1927, (North or South Zone), where applicable.

NOTE: The above description of the Tract nominated for lease has been provided and corrected, where required, exclusively by the nomination party. Any mineral lease selected from this Tract and awarded by the Louisiana State Mineral and Energy Board shall be without warranty of any kind, either express, implied, or statutory, including, but not limited to, the implied warranties of merchantability and fitness for a particular purpose. Should the mineral lease awarded by the Louisiana State Mineral and Energy Board be subsequently modified, cancelled or abrogated due to the existence of conflicting leases, operating agreements, private claims or other future obligations or conditions which may affect all or any portion of the leased Tract, it shall not relieve the Lessee of the obligation to pay any bonus due thereon to the Louisiana State Mineral and Energy Board, nor shall the Louisiana State Mineral and Energy Board be obligated to refund any consideration paid by the Lessor prior to such modification, cancellation, or abrogation, including, but not limited to, bonuses, rentals and royalties.

NOTE: The State of Louisiana does hereby reserve, and this lease shall be subject to, the imprescriptible right of surface use in the nature of a servitude in favor of the Department of Natural Resources, including its Offices and Commissions, for the sole purpose of implementing, constructing, servicing and maintaining approved coastal zone management and/or restoration projects. Utilization of any and all rights derived

under this lease by the mineral lessee, its agents, successors or assigns, shall not interfere with nor hinder the reasonable surface use by the Department of Natural Resources, its Offices or Commissions, as herein above reserved.

NOTE: This tract is located in an area designated by the Louisiana Legislature or the Wildlife and Fisheries Commission as a Public Oyster Seed Ground, Reservation, or area of Calcasieu or Sabine Lake. Proposed projects occurring in these areas will be evaluated on a case by case basis by Louisiana Department of Wildlife & Fisheries. Modifications to proposed project features including, but not limited to, access routes, well sites, flowlines, and appurtenant structures maybe required by the Louisiana Department of Wildlife and Fisheries. In addition, compensatory mitigation will be required to offset unavoidable habitat impacts.

Applicant: LESLIE M. COOPER

Bidder	Cash Payment	Price/ Acre	Rental	Oil	Gas	Other



Legend
11100011
Active_Leases
IMAGERY.DOQQ_2008_1M_CIR

IBERIA PARISH

TIGRE LAGOON

VERMILION BAY

SL 19944

P.O.B.

T14S - R4E

TRACT 42316 - Iberia Parish, Louisiana

All of the lands now or formerly constituting the beds and bottoms of all water bodies of every nature and description as to which title is vested in the State of Louisiana, together with all islands arising therein and other lands formed by accretion or by reliction, where allowed by law, excepting tax adjudicated lands, and not presently under mineral lease on October 12, 2011, situated in Iberia Parish, Louisiana, and more particularly described as follows: Beginning at a point having Coordinates of X = 1,809,548.19 and Y = 413,832.62; thence East 9.735.15 feet to a point having Coordinates of X = 1,819,283.34 and Y = 413,832.62; thence South 10,444.77 feet to a point having Coordinates of X = 1,819,283.34 and Y = 403,387.85; thence West 9,735.15 feet to a point having Coordinates of X = 1,809,548.19 and Y = 403,387.85; thence North 10,444.77 feet to the point of beginning, containing approximately **2,334.28 acres**, all as more particularly outlined on a plat on file in the Office of Mineral Resources, Department of Natural Resources. All bearings, distances and coordinates are based on Louisiana Coordinate System of 1927, (North or South Zone), where applicable.

NOTE: The above description of the Tract nominated for lease has been provided and corrected, where required, exclusively by the nomination party. Any mineral lease selected from this Tract and awarded by the Louisiana State Mineral and Energy Board shall be without warranty of any kind, either express, implied, or statutory, including, but not limited to, the implied warranties of merchantability and fitness for a particular purpose. Should the mineral lease awarded by the Louisiana State Mineral and Energy Board be subsequently modified, cancelled or abrogated due to the existence of conflicting leases, operating agreements, private claims or other future obligations or conditions which may affect all or any portion of the leased Tract, it shall not relieve the Lessee of the obligation to pay any bonus due thereon to the Louisiana State Mineral and Energy Board, nor shall the Louisiana State Mineral and Energy Board be obligated to refund any consideration paid by the Lessor prior to such modification, cancellation, or abrogation, including, but not limited to, bonuses, rentals and royalties.

NOTE: The State of Louisiana does hereby reserve, and this lease shall be subject to, the imprescriptible right of surface use in the nature of a servitude in favor of the Department of Natural Resources, including its Offices and Commissions, for the sole purpose of implementing, constructing, servicing and maintaining approved coastal zone management and/or restoration projects. Utilization of any and all rights derived under this lease by the mineral lessee, its agents, successors or assigns, shall not interfere with nor hinder the reasonable surface use by the Department of Natural Resources, its Offices or Commissions, as herein above reserved.

NOTE: This tract is located in an area designated by the Louisiana Legislature or the Wildlife and Fisheries Commission as a Public Oyster

Seed Ground, Reservation, or area of Calcasieu or Sabine Lake. Proposed projects occurring in these areas will be evaluated on a case by case basis by Louisiana Department of Wildlife & Fisheries. Modifications to proposed project features including, but not limited to, access routes, well sites, flowlines, and appurtenant structures maybe required by the Louisiana Department of Wildlife and Fisheries. In addition, compensatory mitigation will be required to offset unavoidable habitat impacts.

Applicant: LESLIE M. COOPER

Bidder	Cash Payment	Price/ Acre	Rental	Oil	Gas	Other

IBERIA PARISH

VERMILION BAY



P.O.B.

