

TRACT 42339 - Plaquemines Parish, Louisiana

All of the lands now or formerly constituting the beds and bottoms of all water bodies of every nature and description as to which title is vested in the State of Louisiana, together with all islands arising therein and other lands formed by accretion or by reliction, where allowed by law, excepting tax adjudicated lands, and not presently under mineral lease on November 9, 2011, situated in Plaquemines Parish, Louisiana, and more particularly described as follows: Beginning at a point having Coordinates of X = 2,432,000.00 and Y = 333,140.00; thence East 17,015.57 feet to a point having Coordinates of X = 2,449,015.57 and Y = 333,140.00; thence Southerly approximately 7,353 feet to the Northwest corner of State Lease No. 707; thence continue Southerly approximately 1,098 feet along the West boundary of said State Lease No. 707 to a point of intersection with an East-West line having a Coordinate of Y = 324,689.79; thence West approximately 17,041 feet along said line to a point having Coordinates of X = 2,432,000.00 and Y = 324,689.79; thence North 8,450.21 feet to the point of beginning, **LESS AND EXCEPT** that portion, if any, of State Lease No. 707 which may lie within the above described tract, containing approximately **1,661 acres**, all as more particularly outlined on a plat on file in the Office of Mineral Resources, Department of Natural Resources. All bearings, distances and coordinates are based on Louisiana Coordinate System of 1927, (North or South Zone), where applicable.

NOTE: The above description of the Tract nominated for lease has been provided and corrected, where required, exclusively by the nomination party. Any mineral lease selected from this Tract and awarded by the Louisiana State Mineral and Energy Board shall be without warranty of any kind, either express, implied, or statutory, including, but not limited to, the implied warranties of merchantability and fitness for a particular purpose. Should the mineral lease awarded by the Louisiana State Mineral and Energy Board be subsequently modified, cancelled or abrogated due to the existence of conflicting leases, operating agreements, private claims or other future obligations or conditions which may affect all or any portion of the leased Tract, it shall not relieve the Lessee of the obligation to pay any bonus due thereon to the Louisiana State Mineral and Energy Board, nor shall the Louisiana State Mineral and Energy Board be obligated to refund any consideration paid by the Lessor prior to such modification, cancellation, or abrogation, including, but not limited to, bonuses, rentals and royalties.

NOTE: The State of Louisiana does hereby reserve, and this lease shall be subject to, the imprescriptible right of surface use in the nature of a servitude in favor of the Department of Natural Resources, including its Offices and Commissions, for the sole purpose of implementing, constructing, servicing and maintaining approved coastal zone management and/or restoration projects. Utilization of any and all rights derived under this lease by the mineral lessee, its agents, successors or assigns, shall not interfere with nor hinder the reasonable surface use by the Department of Natural Resources, its Offices or Commissions, as herein above reserved.

Applicant: CYPRESS ENERGY CORPORATION

Bidder	Cash Payment	Price/ Acre	Rental	Oil	Gas	Other

Legend

11110005

Active_Leases

IMAGERY.DOQQ_2008_1M_CIR

0 3,000 Feet

PLAQUEMINES PARISH

T17S - R25E

BAYOU MC CUTCHEN

P.O.B.

ROUND LAKE

BAYOU TAMBOUR

WILKINSON BAYOU

SL 707

Office of Mineral Resources, Acres: 1661 Tract Number: 42339

TRACT 42340 - Jefferson and Plaquemines Parishes, Louisiana

All of the lands now or formerly constituting the beds and bottoms of all water bodies of every nature and description as to which title is vested in the State of Louisiana, together with all islands arising therein and other lands formed by accretion or by reliction, where allowed by law, excepting tax adjudicated lands, and not presently under mineral lease on November 9, 2011, situated in Jefferson and Plaquemines Parishes, Louisiana, and more particularly described as follows: Beginning at the Northeast corner of State Lease No. 19906 having Coordinates of X = 2,415,963.34 and Y = 333,140.00; thence East 16,036.66 feet to a point having Coordinates of X = 2,432,000.00 and Y = 333,140.00; thence South 8,450.21 feet to a point having Coordinates of X = 2,432,000.00 and Y = 324,689.79; thence West 16,036.66 feet to the Southeast corner of said State Lease No. 19906 having Coordinates of X = 2,415,963.34 and Y = 324,689.79; thence North 8,450.21 feet along the East boundary of said State Lease No. 19906 to the point of beginning, containing approximately **1,519 acres**, all as more particularly outlined on a plat on file in the Office of Mineral Resources, Department of Natural Resources. All bearings, distances and coordinates are based on Louisiana Coordinate System of 1927, (North or South Zone), where applicable.

NOTE: The above description of the Tract nominated for lease has been provided and corrected, where required, exclusively by the nomination party. Any mineral lease selected from this Tract and awarded by the Louisiana State Mineral and Energy Board shall be without warranty of any kind, either express, implied, or statutory, including, but not limited to, the implied warranties of merchantability and fitness for a particular purpose. Should the mineral lease awarded by the Louisiana State Mineral and Energy Board be subsequently modified, cancelled or abrogated due to the existence of conflicting leases, operating agreements, private claims or other future obligations or conditions which may affect all or any portion of the leased Tract, it shall not relieve the Lessee of the obligation to pay any bonus due thereon to the Louisiana State Mineral and Energy Board, nor shall the Louisiana State Mineral and Energy Board be obligated to refund any consideration paid by the Lessor prior to such modification, cancellation, or abrogation, including, but not limited to, bonuses, rentals and royalties.

NOTE: The State of Louisiana does hereby reserve, and this lease shall be subject to, the imprescriptible right of surface use in the nature of a servitude in favor of the Department of Natural Resources, including its Offices and Commissions, for the sole purpose of implementing, constructing, servicing and maintaining approved coastal zone management and/or restoration projects. Utilization of any and all rights derived under this lease by the mineral lessee, its agents, successors or assigns, shall not interfere with nor hinder the reasonable surface use by the Department of Natural Resources, its Offices or Commissions, as herein above reserved.

Applicant: CYPRESS ENERGY CORPORATION

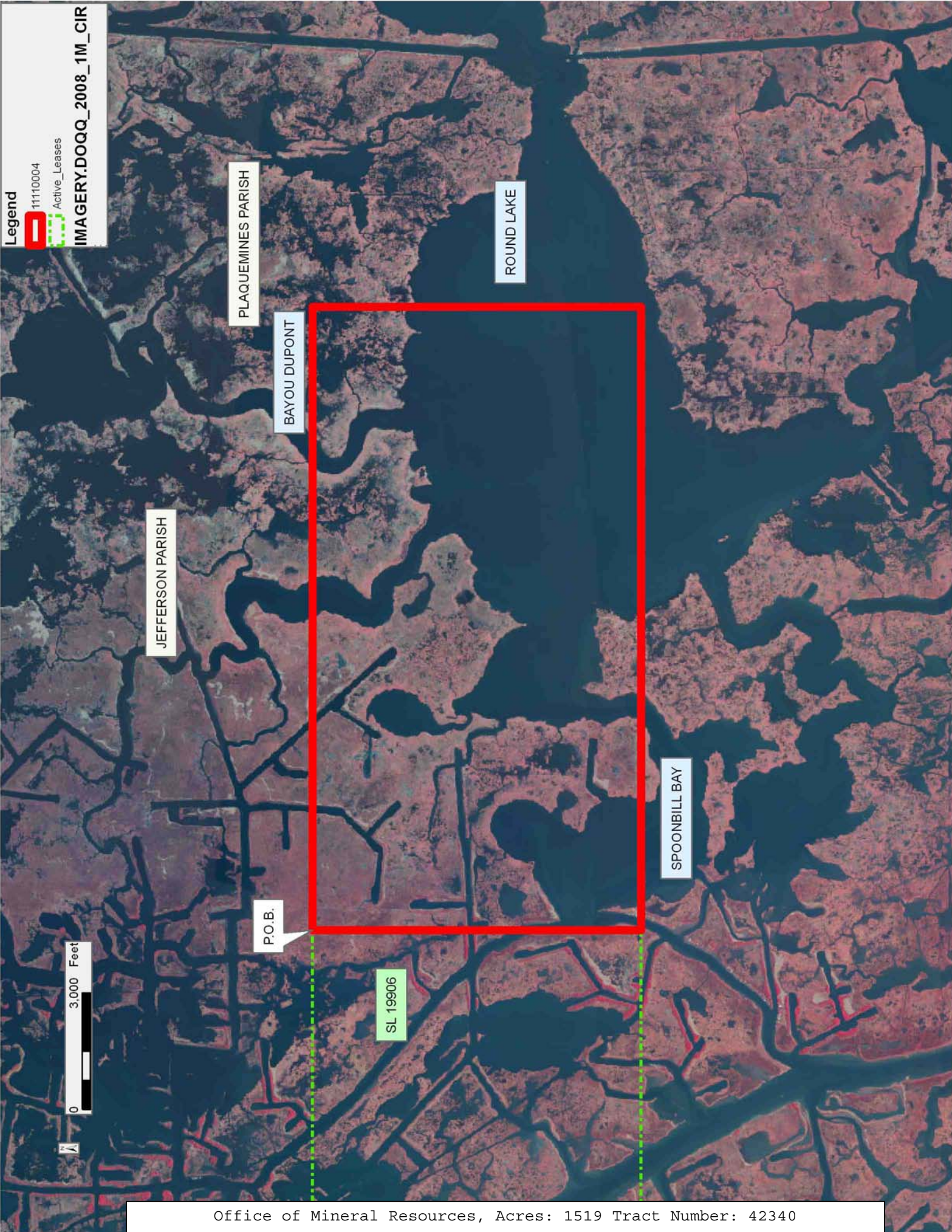
Bidder	Cash Payment	Price/ Acre	Rental	Oil	Gas	Other

Legend

11110004

Active_Leases

IMAGERY.DOQQ_2008_1M_CIR



TRACT 42341 - Jefferson Parish, Louisiana

All of the lands now or formerly constituting the beds and bottoms of all water bodies of every nature and description as to which title is vested in the State of Louisiana, together with all islands arising therein and other lands formed by accretion or by reliction, where allowed by law, excepting tax adjudicated lands, and not presently under mineral lease on November 9, 2011, situated in Jefferson Parish, Louisiana, and more particularly described as follows: Beginning at a point having Coordinates of X = 2,406,600.00 and Y = 316,800.00; thence West 17,542.57 feet to a point having Coordinates of X = 2,389,057.43 and Y = 316,800.00; thence North 581.85 feet to the Southeast corner of State Lease No. 16709, as amended, having Coordinates of X = 2,389,057.43 and Y = 317,381.85; thence North 3,608.90 feet along the East boundary of said State Lease No. 16709 to its Northeast corner having Coordinates of X = 2,389,057.43 and Y = 320,990.75; thence North 6,809.25 feet to a point having Coordinates of X = 2,389,057.43 and Y = 327,800.00; thence East 12,012.57 feet to a point on the Western boundary of State Lease No. 19906 having Coordinates of X = 2,401,070.00 and Y = 327,800.00; thence along the boundary of said State Lease No. 19906 the following courses: South 3,110.21 feet to a point having Coordinates of X = 2,401,070.00 and Y = 324,689.79 and East 4,527.00 feet to a point having Coordinates of X = 2,405,597.00 and Y = 324,689.79; thence South 3,520.79 feet to the Northwest corner of State Lease No. 18441 having Coordinates of X = 2,405,597.00 and Y = 321,169.00; thence along the boundary of said State Lease No. 18441 the following courses: South 01 degrees 02 minutes 22 seconds East 1,819.30 feet to a point having Coordinates of X = 2,405,630.00 and Y = 319,350.00 and East 970.00 feet to a point having Coordinates of X = 2,406,600.00 and Y = 319,350.00; thence South 2,550.00 feet to the point of beginning, containing approximately **1,164 acres**, all as more particularly outlined on a plat on file in the Office of Mineral Resources, Department of Natural Resources. All bearings, distances and coordinates are based on Louisiana Coordinate System of 1927, (North or South Zone), where applicable.

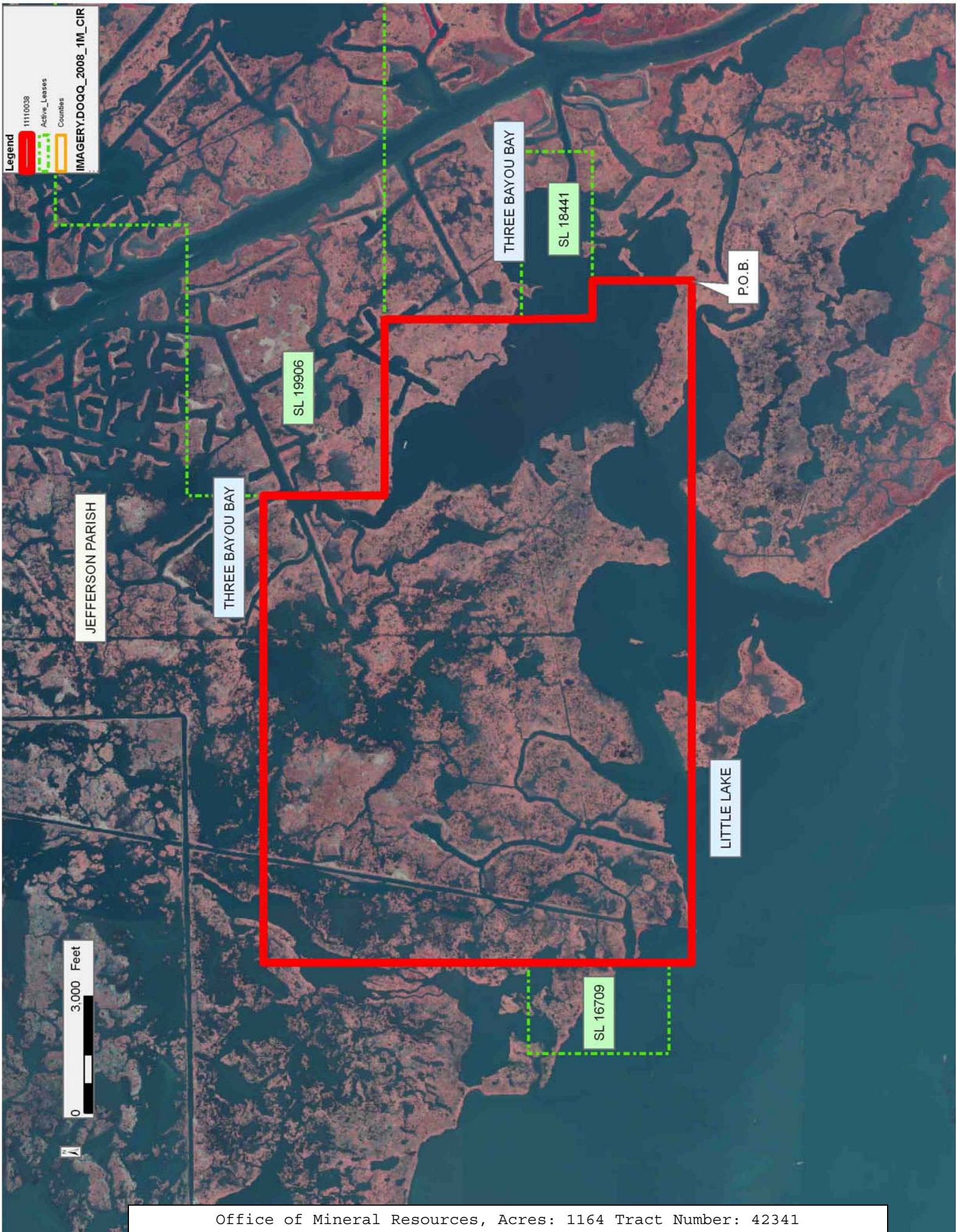
NOTE: The above description of the Tract nominated for lease has been provided and corrected, where required, exclusively by the nomination party. Any mineral lease selected from this Tract and awarded by the Louisiana State Mineral and Energy Board shall be without warranty of any kind, either express, implied, or statutory, including, but not limited to, the implied warranties of merchantability and fitness for a particular purpose. Should the mineral lease awarded by the Louisiana State Mineral and Energy Board be subsequently modified, cancelled or abrogated due to the existence of conflicting leases, operating agreements, private claims or other future obligations or conditions which may affect all or any portion of the leased Tract, it shall not relieve the Lessee of the obligation to pay any bonus due thereon to the Louisiana State Mineral and Energy Board, nor shall the Louisiana State Mineral and Energy Board be obligated to refund any consideration paid by the Lessor prior to such modification, cancellation, or abrogation, including, but not limited to, bonuses, rentals and royalties.

NOTE: The State of Louisiana does hereby reserve, and this lease shall be subject to, the imprescriptible right of surface use in the nature of a servitude in favor of the Department of Natural Resources, including its Offices and Commissions, for the sole purpose of implementing, constructing, servicing and maintaining approved coastal zone management and/or restoration projects. Utilization of any and all rights derived under this lease by the mineral lessee, its agents, successors or assigns, shall not interfere with nor hinder the reasonable surface use by the Department of Natural Resources, its Offices or Commissions, as herein above reserved.

NOTE: This tract is located in an area designated by the Louisiana Legislature or the Wildlife and Fisheries Commission as a Public Oyster Seed Ground, Reservation, or area of Calcasieu or Sabine Lake. Proposed projects occurring in these areas will be evaluated on a case by case basis by Louisiana Department of Wildlife & Fisheries. Modifications to proposed project features including, but not limited to, access routes, well sites, flowlines, and appurtenant structures maybe required by the Louisiana Department of Wildlife and Fisheries. In addition, compensatory mitigation will be required to offset unavoidable habitat impacts.

Applicant: ACCO OIL & GAS

Bidder	Cash Payment	Price/ Acre	Rental	Oil	Gas	Other



TRACT 42342 - Jefferson and Plaquemines Parishes, Louisiana

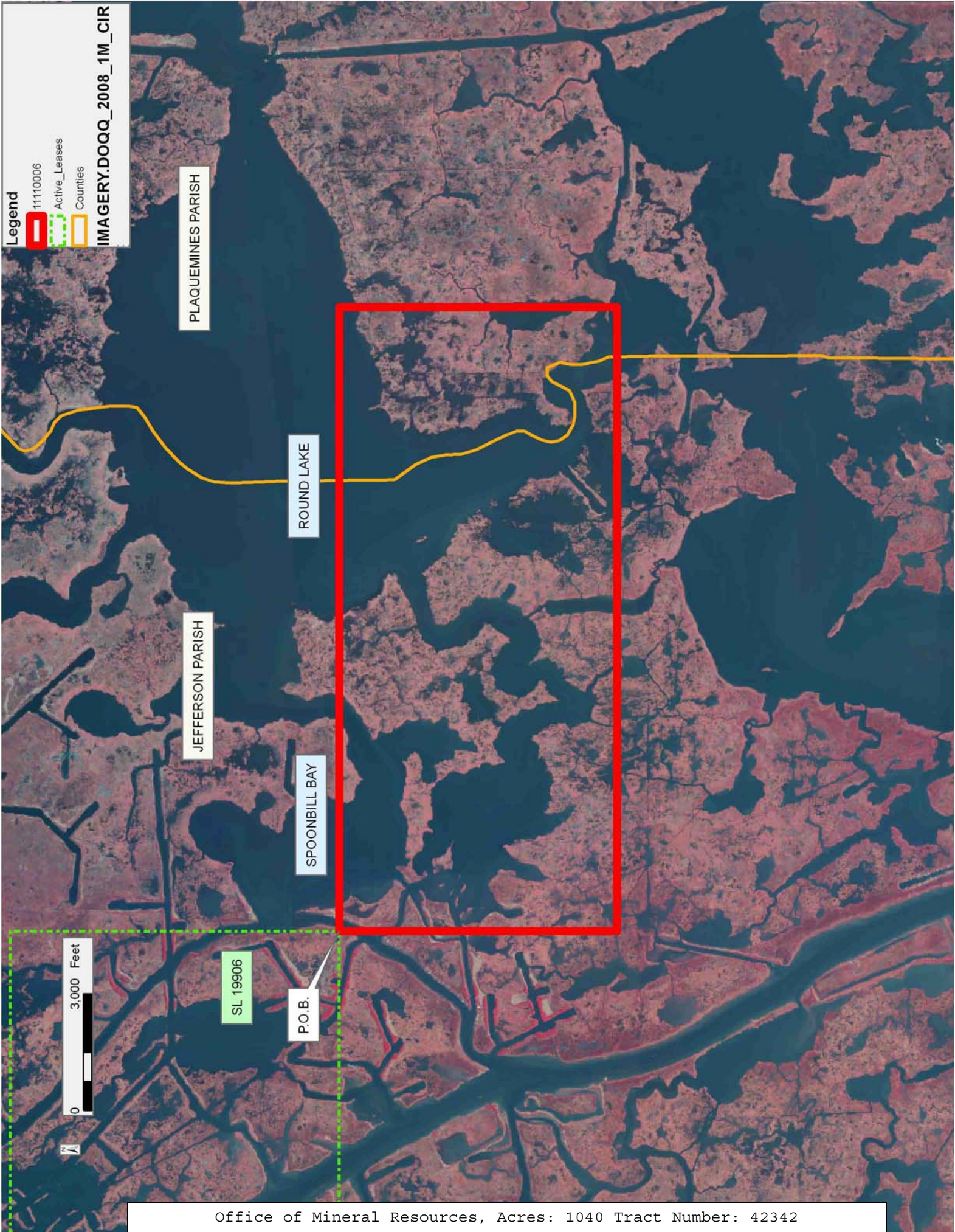
All of the lands now or formerly constituting the beds and bottoms of all water bodies of every nature and description as to which title is vested in the State of Louisiana, together with all islands arising therein and other lands formed by accretion or by reliction, where allowed by law, excepting tax adjudicated lands, and not presently under mineral lease on November 9, 2011, situated in Jefferson and Plaquemines Parishes, Louisiana, and more particularly described as follows: Beginning at the Southeast corner of State Lease No. 19906 having Coordinates of X = 2,415,963.34 and Y = 324,689.79; thence East 16,036.66 feet to a point having Coordinates of X = 2,432,000.00 and Y = 324,689.79; thence South 7,148.00 feet to a point having Coordinates of X = 2,432,000.00 and Y = 317,541.79; thence West 16,036.66 feet to a point having Coordinates of X = 2,415,963.34 and Y = 317,541.79; thence North 7,148.00 feet to the point of beginning, containing approximately **1,040 acres**, all as more particularly outlined on a plat on file in the Office of Mineral Resources, Department of Natural Resources. All bearings, distances and coordinates are based on Louisiana Coordinate System of 1927, (North or South Zone), where applicable.

NOTE: The above description of the Tract nominated for lease has been provided and corrected, where required, exclusively by the nomination party. Any mineral lease selected from this Tract and awarded by the Louisiana State Mineral and Energy Board shall be without warranty of any kind, either express, implied, or statutory, including, but not limited to, the implied warranties of merchantability and fitness for a particular purpose. Should the mineral lease awarded by the Louisiana State Mineral and Energy Board be subsequently modified, cancelled or abrogated due to the existence of conflicting leases, operating agreements, private claims or other future obligations or conditions which may affect all or any portion of the leased Tract, it shall not relieve the Lessee of the obligation to pay any bonus due thereon to the Louisiana State Mineral and Energy Board, nor shall the Louisiana State Mineral and Energy Board be obligated to refund any consideration paid by the Lessor prior to such modification, cancellation, or abrogation, including, but not limited to, bonuses, rentals and royalties.

NOTE: The State of Louisiana does hereby reserve, and this lease shall be subject to, the imprescriptible right of surface use in the nature of a servitude in favor of the Department of Natural Resources, including its Offices and Commissions, for the sole purpose of implementing, constructing, servicing and maintaining approved coastal zone management and/or restoration projects. Utilization of any and all rights derived under this lease by the mineral lessee, its agents, successors or assigns, shall not interfere with nor hinder the reasonable surface use by the Department of Natural Resources, its Offices or Commissions, as herein above reserved.

Applicant: CYPRESS ENERGY CORPORATION

Bidder	Cash Payment	Price/ Acre	Rental	Oil	Gas	Other



TRACT 42343 - Plaquemines Parish, Louisiana

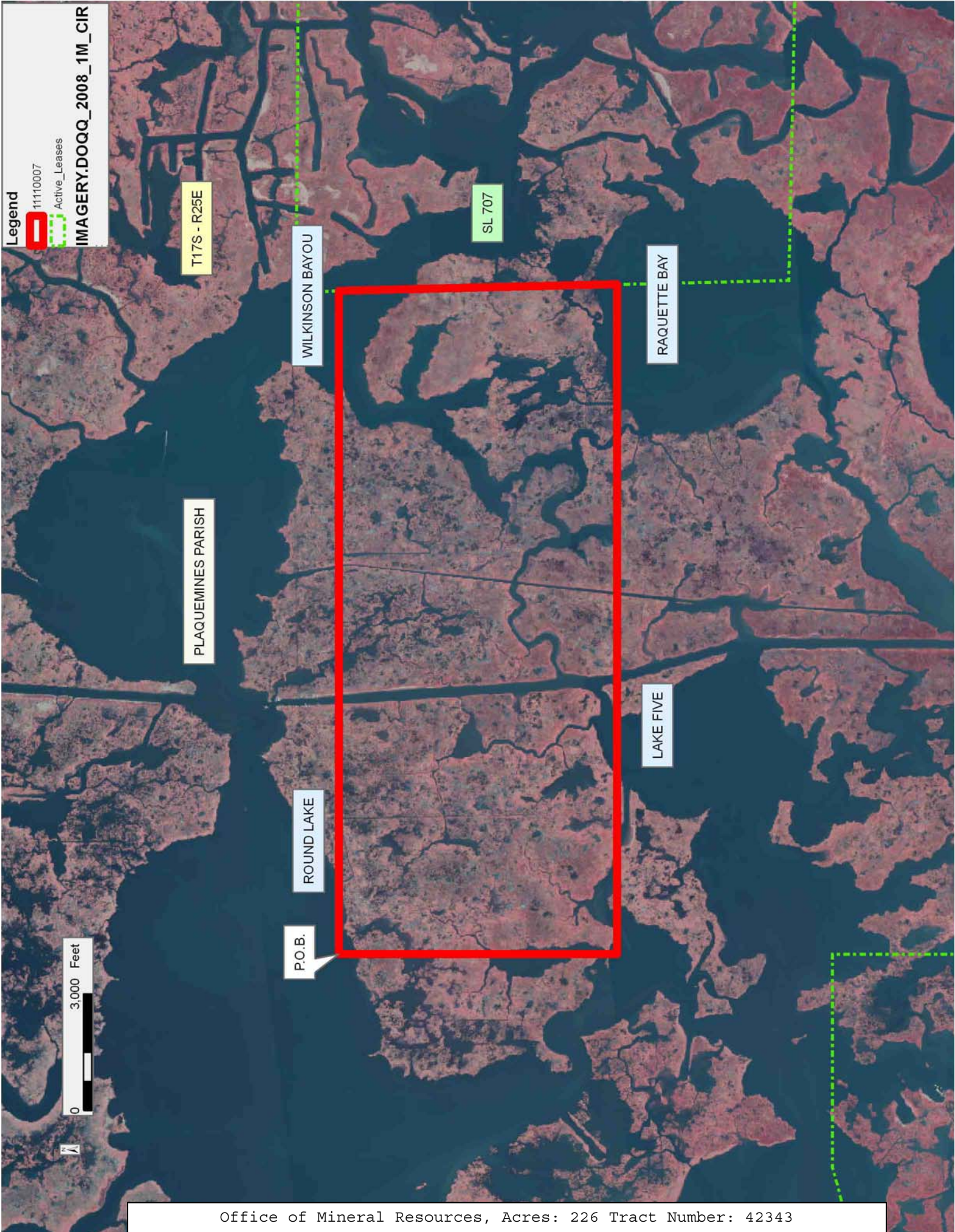
All of the lands now or formerly constituting the beds and bottoms of all water bodies of every nature and description as to which title is vested in the State of Louisiana, together with all islands arising therein and other lands formed by accretion or by reliction, where allowed by law, excepting tax adjudicated lands, and not presently under mineral lease on November 9, 2011, situated in Plaquemines Parish, Louisiana, and more particularly described as follows: Beginning at a point having Coordinates of X = 2,432,000.00 and Y = 324,689.79; thence East approximately 17,041 feet to a point on the West boundary of State Lease No. 707 having a Coordinate of Y = 324,689.79; thence Southerly approximately 7,150 feet along the West boundary of said State Lease No. 707 to a point of intersection with an East-West line having a Coordinate of Y = 317,541.79; thence West approximately 17,210 feet along said line to a point having Coordinates of X = 2,432,000.00 and Y = 317,541.79; thence North 7,148.00 feet to the point of beginning, **LESS AND EXCEPT** that portion, if any, of State Lease No. 707 which may lie within the above described tract, containing approximately **226 acres**, all as more particularly outlined on a plat on file in the Office of Mineral Resources, Department of Natural Resources. All bearings, distances and coordinates are based on Louisiana Coordinate System of 1927, (North or South Zone), where applicable.

NOTE: The above description of the Tract nominated for lease has been provided and corrected, where required, exclusively by the nomination party. Any mineral lease selected from this Tract and awarded by the Louisiana State Mineral and Energy Board shall be without warranty of any kind, either express, implied, or statutory, including, but not limited to, the implied warranties of merchantability and fitness for a particular purpose. Should the mineral lease awarded by the Louisiana State Mineral and Energy Board be subsequently modified, cancelled or abrogated due to the existence of conflicting leases, operating agreements, private claims or other future obligations or conditions which may affect all or any portion of the leased Tract, it shall not relieve the Lessee of the obligation to pay any bonus due thereon to the Louisiana State Mineral and Energy Board, nor shall the Louisiana State Mineral and Energy Board be obligated to refund any consideration paid by the Lessor prior to such modification, cancellation, or abrogation, including, but not limited to, bonuses, rentals and royalties.

NOTE: The State of Louisiana does hereby reserve, and this lease shall be subject to, the imprescriptible right of surface use in the nature of a servitude in favor of the Department of Natural Resources, including its Offices and Commissions, for the sole purpose of implementing, constructing, servicing and maintaining approved coastal zone management and/or restoration projects. Utilization of any and all rights derived under this lease by the mineral lessee, its agents, successors or assigns, shall not interfere with nor hinder the reasonable surface use by the Department of Natural Resources, its Offices or Commissions, as herein above reserved.

Applicant: CYPRESS ENERGY CORPORATION

Bidder	Cash Payment	Price/ Acre	Rental	Oil	Gas	Other



TRACT 42344 - Jefferson Parish, Louisiana

All of the lands now or formerly constituting the beds and bottoms of all water bodies of every nature and description as to which title is vested in the State of Louisiana, together with all islands arising therein and other lands formed by accretion or by reliction, where allowed by law, excepting tax adjudicated lands, and not presently under mineral lease on November 9, 2011, situated in Jefferson Parish, Louisiana, and more particularly described as follows: Beginning at a point having Coordinates of X = 2,406,600.00 and Y = 316,800.00; thence North 2,550.00 feet to a point on the South boundary of State Lease No. 18441 having Coordinates of X = 2,406,600.00 and Y = 319,350.00; thence along the boundary of said State Lease No. 18441 the following courses: East 3,320.00 feet to a point having Coordinates of X = 2,409,920.00 and Y = 319,350.00; North 1,819.00 feet to a point having Coordinates of X = 2,409,920.00 and Y = 321,169.00 and West 4,323.00 feet to its Northwest corner having Coordinates of X = 2,405,597.00 and Y = 321,169.00; thence North 3,520.79 feet to a point on the South boundary of State Lease No. 19906 having Coordinates of X = 2,405,597.00 and Y = 324,689.79; thence East approximately 747 feet along the South boundary of said State Lease No. 19906 to a point of intersection with the boundary of State Lease No. 356, as amended, having a Coordinate of Y = 324,689.79; thence Southerly, Southwesterly and Northeasterly along the boundary of said State Lease No. 356 to a point of intersection with the South boundary of said State Lease No. 19906 having a Coordinate of Y = 324,689.79; thence East approximately 6,019 feet along the South boundary of said State Lease No. 19906 to its Southeast corner having Coordinates of X = 2,415,963.34 and Y = 324,689.79; thence South 7,889.79 feet to a point having Coordinates of X = 2,415,963.34 and Y = 316,800.00; thence West 9,363.34 feet to the point of beginning, **LESS AND EXCEPT** that portion, if any, of State Lease No. 356, as amended, that may lie within the above described tract, containing approximately **258 acres**, all as more particularly outlined on a plat on file in the Office of Mineral Resources, Department of Natural Resources. All bearings, distances and coordinates are based on Louisiana Coordinate System of 1927, (North or South Zone), where applicable.

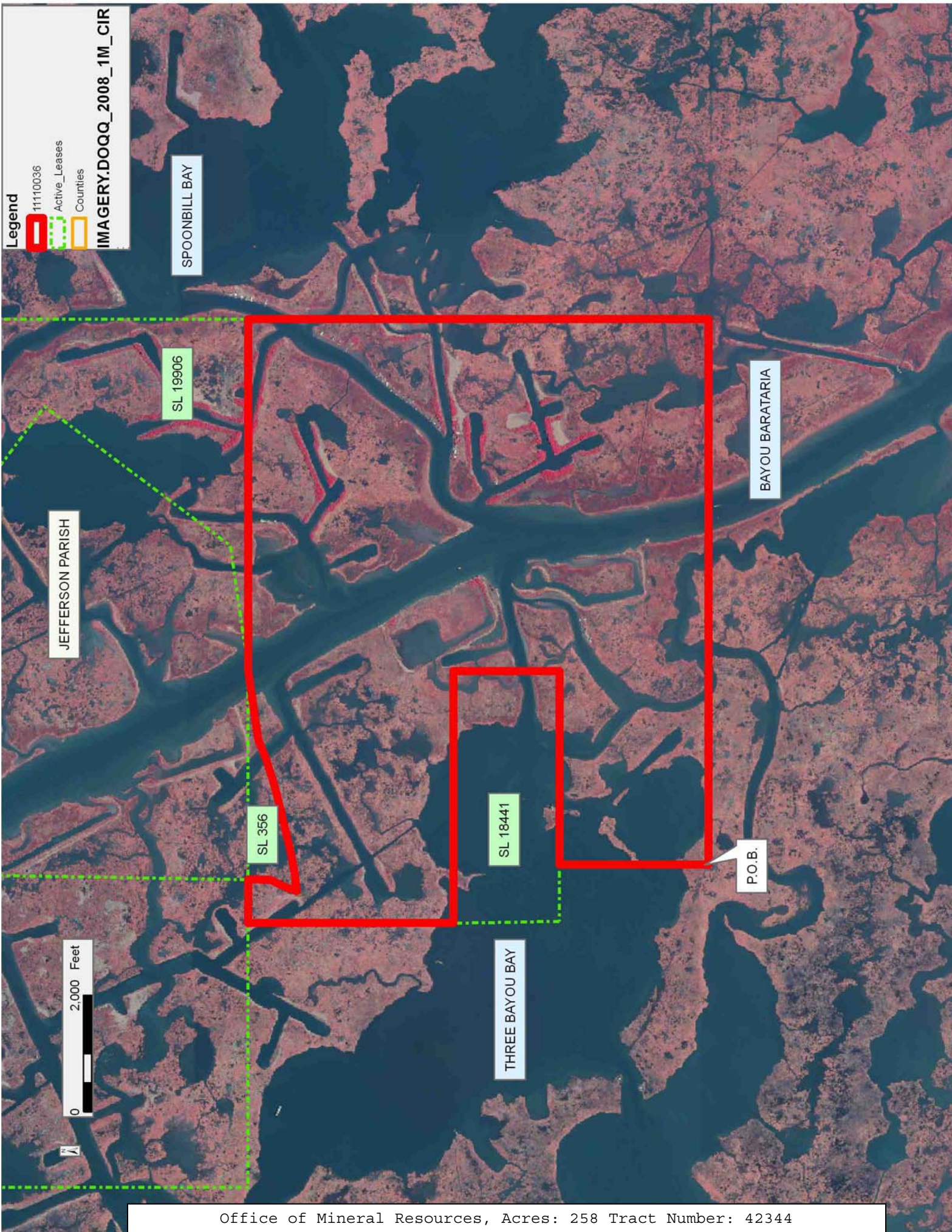
NOTE: The above description of the Tract nominated for lease has been provided and corrected, where required, exclusively by the nomination party. Any mineral lease selected from this Tract and awarded by the Louisiana State Mineral and Energy Board shall be without warranty of any kind, either express, implied, or statutory, including, but not limited to, the implied warranties of merchantability and fitness for a particular purpose. Should the mineral lease awarded by the Louisiana State Mineral and Energy Board be subsequently modified, cancelled or abrogated due to the existence of conflicting leases, operating agreements, private claims or other future obligations or conditions which may affect all or any portion of the leased Tract, it shall not relieve the Lessee of the obligation to pay any bonus due thereon to the Louisiana State Mineral and Energy Board, nor shall the Louisiana State Mineral and Energy Board be obligated to refund any consideration paid by the Lessor prior to such

modification, cancellation, or abrogation, including, but not limited to, bonuses, rentals and royalties.

NOTE: The State of Louisiana does hereby reserve, and this lease shall be subject to, the imprescriptible right of surface use in the nature of a servitude in favor of the Department of Natural Resources, including its Offices and Commissions, for the sole purpose of implementing, constructing, servicing and maintaining approved coastal zone management and/or restoration projects. Utilization of any and all rights derived under this lease by the mineral lessee, its agents, successors or assigns, shall not interfere with nor hinder the reasonable surface use by the Department of Natural Resources, its Offices or Commissions, as herein above reserved.

Applicant: ACCO OIL & GAS

Bidder	Cash Payment	Price/ Acre	Rental	Oil	Gas	Other



TRACT 42345 - Jefferson and Plaquemines Parishes, Louisiana

All of the lands now or formerly constituting the beds and bottoms of all water bodies of every nature and description as to which title is vested in the State of Louisiana, together with all islands arising therein and other lands formed by accretion or by reliction, where allowed by law, excepting tax adjudicated lands, and not presently under mineral lease on November 9, 2011, situated in Jefferson and Plaquemines Parishes, Louisiana, and more particularly described as follows: Beginning at a point having Coordinates of X = 2,415,963.34 and Y = 317,541.79; thence East 16,036.66 feet to a point having Coordinates of X = 2,432,000.00 and Y = 317,541.79; thence South 5,541.79 feet to the Northeast corner of State Lease No. 20513 having Coordinates of X = 2,432,000.00 and Y = 312,000.00; thence along the boundary of said State Lease No. 20513 the following courses: West 5,500.00 feet to a point having Coordinates of X = 2,426,500.00 and Y = 312,000.00 and South 75 degrees 08 minutes 14 seconds West 8,579.98 feet to its Northwest corner, also being the Northeast corner of State Lease No. 20514 having Coordinates of X = 2,418,207.08 and Y = 309,799.20; thence continue South 75 degrees 08 minutes 14 seconds West 2,321.41 feet along the North boundary of said State Lease No. 20514 to a point having Coordinates of X = 2,415,963.34 and Y = 309,203.75; thence North 8,338.04 feet to the point of beginning, containing approximately **789 acres**, all as more particularly outlined on a plat on file in the Office of Mineral Resources, Department of Natural Resources. All bearings, distances and coordinates are based on Louisiana Coordinate System of 1927, (North or South Zone), where applicable.

NOTE: The above description of the Tract nominated for lease has been provided and corrected, where required, exclusively by the nomination party. Any mineral lease selected from this Tract and awarded by the Louisiana State Mineral and Energy Board shall be without warranty of any kind, either express, implied, or statutory, including, but not limited to, the implied warranties of merchantability and fitness for a particular purpose. Should the mineral lease awarded by the Louisiana State Mineral and Energy Board be subsequently modified, cancelled or abrogated due to the existence of conflicting leases, operating agreements, private claims or other future obligations or conditions which may affect all or any portion of the leased Tract, it shall not relieve the Lessee of the obligation to pay any bonus due thereon to the Louisiana State Mineral and Energy Board, nor shall the Louisiana State Mineral and Energy Board be obligated to refund any consideration paid by the Lessor prior to such modification, cancellation, or abrogation, including, but not limited to, bonuses, rentals and royalties.

NOTE: The State of Louisiana does hereby reserve, and this lease shall be subject to, the imprescriptible right of surface use in the nature of a servitude in favor of the Department of Natural Resources, including its Offices and Commissions, for the sole purpose of implementing, constructing, servicing and maintaining approved coastal zone management and/or restoration projects. Utilization of any and all rights derived

under this lease by the mineral lessee, its agents, successors or assigns, shall not interfere with nor hinder the reasonable surface use by the Department of Natural Resources, its Offices or Commissions, as herein above reserved.

Applicant: CYPRESS ENERGY CORPORATION

Bidder	Cash Payment	Price/ Acre	Rental	Oil	Gas	Other

Legend

11110008

Active_Leases

Counties

IMAGERY.DOQQ_2008_1M_CIR

PLAQUEMINES PARISH

LAKE FIVE

JEFFERSON PARISH

SL 20513

SL 20514

P.O.B.

BAYOU BARATARIA



TRACT 42346 - Plaquemines Parish, Louisiana

All of the lands now or formerly constituting the beds and bottoms of all water bodies of every nature and description as to which title is vested in the State of Louisiana, together with all islands arising therein and other lands formed by accretion or by reliction, where allowed by law, excepting tax adjudicated lands, and not presently under mineral lease on November 9, 2011, situated in Plaquemines Parish, Louisiana, and more particularly described as follows: Beginning at a point having Coordinates of X = 2,432,000.00 and Y = 317,541.79; thence East approximately 17,210 feet to a point on the West boundary of State Lease No. 707 having a Coordinate of Y = 317,541.79; thence Southerly approximately 4,416 feet along the West boundary of said State Lease No. 707 to its Southwest corner; thence continue Southerly approximately 3,123 feet to a point having Coordinates of X = 2,449,314.64 and Y = 310,004.37; thence West 17,314.64 feet to a point on the East boundary of State Lease No. 20513 having Coordinates of X = 2,432,000.00 and Y = 310,004.37; thence North 1,995.63 feet along the East boundary of said State Lease No. 20513 to its Northeast corner having Coordinates of X = 2,432,000.00 and Y = 312,000.00; thence continue North 5,541.79 feet to the point of beginning, **LESS AND EXCEPT** that portion, if any, of State Lease No. 707 which may lie within the above described tract, containing approximately **1,360 acres**, all as more particularly outlined on a plat on file in the Office of Mineral Resources, Department of Natural Resources. All bearings, distances and coordinates are based on Louisiana Coordinate System of 1927, (North or South Zone), where applicable.

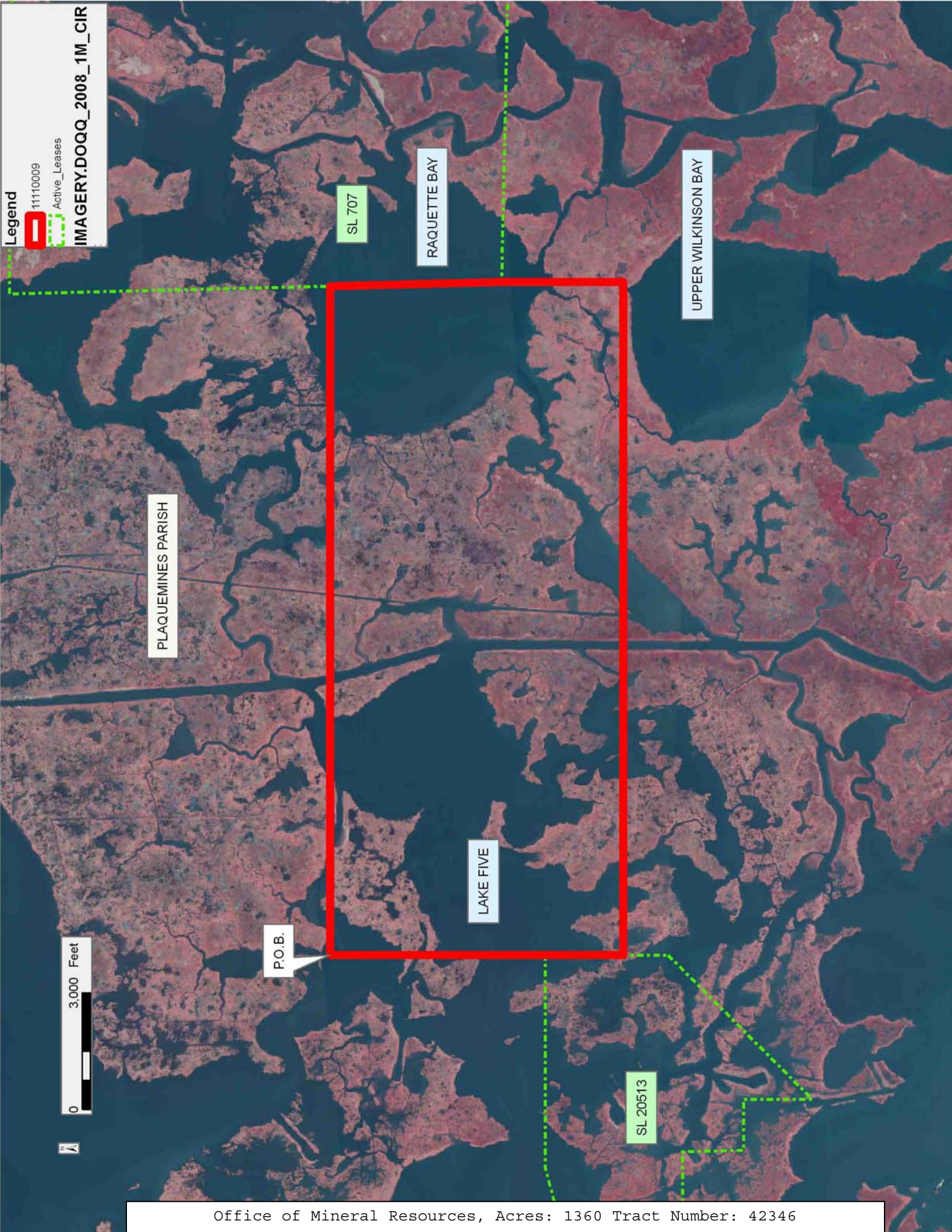
NOTE: The above description of the Tract nominated for lease has been provided and corrected, where required, exclusively by the nomination party. Any mineral lease selected from this Tract and awarded by the Louisiana State Mineral and Energy Board shall be without warranty of any kind, either express, implied, or statutory, including, but not limited to, the implied warranties of merchantability and fitness for a particular purpose. Should the mineral lease awarded by the Louisiana State Mineral and Energy Board be subsequently modified, cancelled or abrogated due to the existence of conflicting leases, operating agreements, private claims or other future obligations or conditions which may affect all or any portion of the leased Tract, it shall not relieve the Lessee of the obligation to pay any bonus due thereon to the Louisiana State Mineral and Energy Board, nor shall the Louisiana State Mineral and Energy Board be obligated to refund any consideration paid by the Lessor prior to such modification, cancellation, or abrogation, including, but not limited to, bonuses, rentals and royalties.

NOTE: The State of Louisiana does hereby reserve, and this lease shall be subject to, the imprescriptible right of surface use in the nature of a servitude in favor of the Department of Natural Resources, including its Offices and Commissions, for the sole purpose of implementing, constructing, servicing and maintaining approved coastal zone management and/or restoration projects. Utilization of any and all rights derived

under this lease by the mineral lessee, its agents, successors or assigns, shall not interfere with nor hinder the reasonable surface use by the Department of Natural Resources, its Offices or Commissions, as herein above reserved.

Applicant: CYPRESS ENERGY CORPORATION

Bidder	Cash Payment	Price/ Acre	Rental	Oil	Gas	Other



Legend

11110009

Active_Leases

IMAGERY.DOQQ_2008_1M_CIR

0 3,000 Feet



TRACT 42347 - Jefferson Parish, Louisiana

All of the lands now or formerly constituting the beds and bottoms of all water bodies of every nature and description as to which title is vested in the State of Louisiana, together with all islands arising therein and other lands formed by accretion or by reliction, where allowed by law, excepting tax adjudicated lands, and not presently under mineral lease on November 9, 2011, situated in Jefferson Parish, Louisiana, and more particularly described as follows: Beginning at a point having Coordinates of X = 2,406,600.00 and Y = 316,800.00; thence South 5,143.57 feet to a point having Coordinates of X = 2,406,600.00 and Y = 311,656.43; thence West 789.79 feet to the Northeast corner of State Lease No. 18727 having Coordinates of X = 2,405,810.21 and Y = 311,656.43; thence along the boundary of said State Lease No. 18727 the following courses: West 2,755.44 feet to a point having Coordinates of X = 2,403,054.77 and Y = 311,656.43; North 64 degrees 45 minutes 10 seconds West 932.33 feet to a point having Coordinates of X = 2,402,211.50 and Y = 312,054.09; South 2,783.00 feet to a point having Coordinates of X = 2,402,211.50 and Y = 309,271.09; West 2,676.69 feet to a point having Coordinates of X = 2,399,534.81 and Y = 309,271.09; South 46 degrees 45 minutes 26 seconds West 2,877.88 feet to a point having Coordinates of X = 2,397,438.40 and Y = 307,299.48 and South 63 degrees 17 minutes 15 seconds East 4,653.95 feet to its Southernmost corner having Coordinates of X = 2,401,595.65 and Y = 305,207.46; thence West 12,538.22 feet to a point having Coordinates of X = 2,389,057.43 and Y = 305,207.46; thence North 11,592.54 feet to a point having Coordinates of X = 2,389,057.43 and Y = 316,800.00; thence East 17,542.57 feet to the point of beginning, containing approximately **2,478 acres**, all as more particularly outlined on a plat on file in the Office of Mineral Resources, Department of Natural Resources. All bearings, distances and coordinates are based on Louisiana Coordinate System of 1927, (North or South Zone), where applicable.

NOTE: The above description of the Tract nominated for lease has been provided and corrected, where required, exclusively by the nomination party. Any mineral lease selected from this Tract and awarded by the Louisiana State Mineral and Energy Board shall be without warranty of any kind, either express, implied, or statutory, including, but not limited to, the implied warranties of merchantability and fitness for a particular purpose. Should the mineral lease awarded by the Louisiana State Mineral and Energy Board be subsequently modified, cancelled or abrogated due to the existence of conflicting leases, operating agreements, private claims or other future obligations or conditions which may affect all or any portion of the leased Tract, it shall not relieve the Lessee of the obligation to pay any bonus due thereon to the Louisiana State Mineral and Energy Board, nor shall the Louisiana State Mineral and Energy Board be obligated to refund any consideration paid by the Lessor prior to such modification, cancellation, or abrogation, including, but not limited to, bonuses, rentals and royalties.

NOTE: The State of Louisiana does hereby reserve, and this lease shall be subject to, the imprescriptible right of surface use in the nature of a servitude in favor of the Department of Natural Resources, including its Offices and Commissions, for the sole purpose of implementing, constructing, servicing and maintaining approved coastal zone management and/or restoration projects. Utilization of any and all rights derived under this lease by the mineral lessee, its agents, successors or assigns, shall not interfere with nor hinder the reasonable surface use by the Department of Natural Resources, its Offices or Commissions, as herein above reserved.

NOTE: This tract is located in an area designated by the Louisiana Legislature or the Wildlife and Fisheries Commission as a Public Oyster Seed Ground, Reservation, or area of Calcasieu or Sabine Lake. Proposed projects occurring in these areas will be evaluated on a case by case basis by Louisiana Department of Wildlife & Fisheries. Modifications to proposed project features including, but not limited to, access routes, well sites, flowlines, and appurtenant structures maybe required by the Louisiana Department of Wildlife and Fisheries. In addition, compensatory mitigation will be required to offset unavoidable habitat impacts.

Applicant: ACCO OIL & GAS

Bidder	Cash Payment	Price/ Acre	Rental	Oil	Gas	Other



TRACT 42348 - Jefferson Parish, Louisiana

All of the lands now or formerly constituting the beds and bottoms of all water bodies of every nature and description as to which title is vested in the State of Louisiana, together with all islands arising therein and other lands formed by accretion or by reliction, where allowed by law, excepting tax adjudicated lands, and not presently under mineral lease on November 9, 2011, situated in Jefferson Parish, Louisiana, and more particularly described as follows: Beginning at a point having Coordinates of X = 2,406,600.00 and Y = 316,800.00; thence East 9,363.34 feet to a point having Coordinates of X = 2,415,963.34 and Y = 316,800.00; thence South 7,596.25 feet to a point on the Northern boundary of State Lease No. 20514 having Coordinates of X = 2,415,963.34 and Y = 309,203.75; thence along the boundary of said State Lease No. 20514 the following courses: South 75 degrees 08 minutes 14 seconds West 582.84 feet to a point having Coordinates of X = 2,415,400.00 and Y = 309,054.25 and South 3,846.79 feet to a point having Coordinates of X = 2,415,400.00 and Y = 305,207.46; thence West 13,804.35 feet to the Southernmost corner of State Lease No. 18727 having Coordinates of X = 2,401,595.65 and Y = 305,207.46; thence along the boundary of said State Lease No. 18727 the following courses: North 36 degrees 44 minutes 15 seconds East 4,043.37 feet to a point having Coordinates of X = 2,404,014.19 and Y = 308,447.75; North 3,014.65 feet to a point having Coordinates of X = 2,404,014.19 and Y = 311,462.40; North 89 degrees 00 minutes 38 seconds East 1,796.29 feet to a point having Coordinates of X = 2,405,810.21 and Y = 311,493.42 and North 163.01 feet to a point having Coordinates of X = 2,405,810.21 and Y = 311,656.43; thence East 789.79 feet to a point having Coordinates of X = 2,406,600.00 and Y = 311,656.43; thence North 5,143.57 feet to the point of beginning, (This tract includes only waterbottoms claimed and owned by the state and specifically excludes any land which the state may claim or own and to which the mineral rights are vested in the state), the above described tract containing approximately **618 acres**, all as more particularly outlined on a plat on file in the Office of Mineral Resources, Department of Natural Resources. All bearings, distances and coordinates are based on Louisiana Coordinate System of 1927, (North or South Zone), where applicable.

NOTE: The above description of the Tract nominated for lease has been provided and corrected, where required, exclusively by the nomination party. Any mineral lease selected from this Tract and awarded by the Louisiana State Mineral and Energy Board shall be without warranty of any kind, either express, implied, or statutory, including, but not limited to, the implied warranties of merchantability and fitness for a particular purpose. Should the mineral lease awarded by the Louisiana State Mineral and Energy Board be subsequently modified, cancelled or abrogated due to the existence of conflicting leases, operating agreements, private claims or other future obligations or conditions which may affect all or any portion of the leased Tract, it shall not relieve the Lessee of the obligation to pay any bonus due thereon to the Louisiana State Mineral and Energy Board, nor shall the Louisiana State Mineral and Energy Board be

obligated to refund any consideration paid by the Lessor prior to such modification, cancellation, or abrogation, including, but not limited to, bonuses, rentals and royalties.

NOTE: The State of Louisiana does hereby reserve, and this lease shall be subject to, the imprescriptible right of surface use in the nature of a servitude in favor of the Department of Natural Resources, including its Offices and Commissions, for the sole purpose of implementing, constructing, servicing and maintaining approved coastal zone management and/or restoration projects. Utilization of any and all rights derived under this lease by the mineral lessee, its agents, successors or assigns, shall not interfere with nor hinder the reasonable surface use by the Department of Natural Resources, its Offices or Commissions, as herein above reserved.

NOTE: This tract is located in an area designated by the Louisiana Legislature or the Wildlife and Fisheries Commission as a Public Oyster Seed Ground, Reservation, or area of Calcasieu or Sabine Lake. Proposed projects occurring in these areas will be evaluated on a case by case basis by Louisiana Department of Wildlife & Fisheries. Modifications to proposed project features including, but not limited to, access routes, well sites, flowlines, and appurtenant structures maybe required by the Louisiana Department of Wildlife and Fisheries. In addition, compensatory mitigation will be required to offset unavoidable habitat impacts.

Applicant: ACCO OIL & GAS

Bidder	Cash Payment	Price/ Acre	Rental	Oil	Gas	Other

Legend

11110037

Active_Leases

IMAGERY.DOQQ_2008_1M_CIR

JEFFERSON PARISH

THREE BAYOU BAY

P.O.B.

BAYOU ST DENIS

BAYOU BARATARIA

SL 20514

BAYOU ST DENIS

SL 18727

T18S - R24E

Office of Mineral Resources, Acres: 618 Tract Number: 42348