

TRACT 42349 - Portion of Blocks 32, 33, and 34, Main Pass Area, Revised, Plaquemines Parish, Louisiana

All of the lands now or formerly constituting the beds and bottoms of all water bodies of every nature and description as to which title is vested in the State of Louisiana, together with all islands arising therein and other lands formed by accretion or by reliction, where allowed by law, excepting tax adjudicated lands, and not presently under mineral lease on November 9, 2011, situated in Plaquemines Parish, Louisiana, and more particularly described as follows: Beginning at a point within Block 33, Main Pass Area, Revised, having Coordinates of X = 2,600,150.00 and Y = 306,526.50; thence East 6,491.30 feet to a point within Block 32, Main Pass Area, Revised, having Coordinates of X = 2,606,641.30 and Y = 306,526.50; thence South 9,246.50 feet to a point on the North boundary of State Lease No. 1958, as amended, having Coordinates of X = 2,606,641.30 and Y = 297,280.00; thence along the boundary of said State Lease No. 1958 the following courses: West 791.30 feet to a point having Coordinates of X = 2,605,850.00 and Y = 297,280.00 and South 4,450.00 feet to its Southwest corner, also being the Northwest corner of State Lease No. 1961, as amended, having Coordinates of X = 2,605,850.00 and Y = 292,830.00; thence South 4,123.36 feet along the West boundary of said State Lease No. 1961 to a point having Coordinates of X = 2,605,850.00 and Y = 288,706.64; thence South 89 degrees 59 minutes 55 seconds West 5,700.00 feet to a point within Block 34, Main Pass Area, Revised, having Coordinates of X = 2,600,150.00 and Y = 288,706.50; thence North 17,820.00 feet to the point of beginning, containing approximately **2,499.78 acres**, all as more particularly outlined on a plat on file in the Office of Mineral Resources, Department of Natural Resources. All bearings, distances and coordinates are based on Louisiana Coordinate System of 1927, (North or South Zone), where applicable.

NOTE: The above description of the Tract nominated for lease has been provided and corrected, where required, exclusively by the nomination party. Any mineral lease selected from this Tract and awarded by the Louisiana State Mineral and Energy Board shall be without warranty of any kind, either express, implied, or statutory, including, but not limited to, the implied warranties of merchantability and fitness for a particular purpose. Should the mineral lease awarded by the Louisiana State Mineral and Energy Board be subsequently modified, cancelled or abrogated due to the existence of conflicting leases, operating agreements, private claims or other future obligations or conditions which may affect all or any portion of the leased Tract, it shall not relieve the Lessee of the obligation to pay any bonus due thereon to the Louisiana State Mineral and Energy Board, nor shall the Louisiana State Mineral and Energy Board be obligated to refund any consideration paid by the Lessor prior to such modification, cancellation, or abrogation, including, but not limited to, bonuses, rentals and royalties.

NOTE: The State of Louisiana does hereby reserve, and this lease shall be subject to, the imprescriptible right of surface use in the nature of a servitude in favor of the Department of Natural Resources, including its

Offices and Commissions, for the sole purpose of implementing, constructing, servicing and maintaining approved coastal zone management and/or restoration projects. Utilization of any and all rights derived under this lease by the mineral lessee, its agents, successors or assigns, shall not interfere with nor hinder the reasonable surface use by the Department of Natural Resources, its Offices or Commissions, as herein above reserved.

NOTE: This tract is located in an area designated by the Louisiana Legislature or the Wildlife and Fisheries Commission as a Public Oyster Seed Ground, Reservation, or area of Calcasieu or Sabine Lake. Proposed projects occurring in these areas will be evaluated on a case by case basis by Louisiana Department of Wildlife & Fisheries. Modifications to proposed project features including, but not limited to, access routes, well sites, flowlines, and appurtenant structures maybe required by the Louisiana Department of Wildlife and Fisheries. In addition, compensatory mitigation will be required to offset unavoidable habitat impacts.

Applicant: GERALD SCHWANDT

Bidder	Cash Payment	Price/Acre	Rental	Oil	Gas	Other

Legend

11110018
Blocks

Active_Leases

PLAQUEMINES PARISH

GULF OF MEXICO

MP0032

SL 1958

SL 1961

MAIN PASS AREA, REVISED

MP0035

MP0034

P.O.B.

MP0033



TRACT 42350 - Portion of Block 32, Main Pass Area, Revised, Plaquemines Parish, Louisiana

All of the lands now or formerly constituting the beds and bottoms of all water bodies of every nature and description as to which title is vested in the State of Louisiana, together with all islands arising therein and other lands formed by accretion or by reliction, where allowed by law, excepting tax adjudicated lands, and not presently under mineral lease on November 9, 2011, situated in Plaquemines Parish, Louisiana, and more particularly described as follows: Beginning at a point within Block 32, Main Pass Area, Revised, having Coordinates of X = 2,606,641.30 and Y = 306,526.50; thence East 9,113.70 feet to the Northwest corner of State Lease No. 20482 having Coordinates of X = 2,615,755.00 and Y = 306,526.50; thence along the boundary of said State Lease No. 20482 the following courses: South 2,778.50 feet to a point having Coordinates of X = 2,615,755.00 and Y = 303,748.00 and East 3,800.00 feet to its Southeast corner having Coordinates of X = 2,619,555.00 and Y = 303,748.00; thence South 6,468.00 feet to a point on the North boundary of State Lease No. 1958, as amended, having Coordinates of X = 2,619,555.00 and Y = 297,280.00; thence West 12,913.70 feet along the North boundary of said State Lease No. 1958 to a point having Coordinates of X = 2,606,641.30 and Y = 297,280.00; thence North 9,246.50 feet to the point of beginning, containing approximately **2,498.81 acres**, all as more particularly outlined on a plat on file in the Office of Mineral Resources, Department of Natural Resources. All bearings, distances and coordinates are based on Louisiana Coordinate System of 1927, (North or South Zone), where applicable.

NOTE: The above description of the Tract nominated for lease has been provided and corrected, where required, exclusively by the nomination party. Any mineral lease selected from this Tract and awarded by the Louisiana State Mineral and Energy Board shall be without warranty of any kind, either express, implied, or statutory, including, but not limited to, the implied warranties of merchantability and fitness for a particular purpose. Should the mineral lease awarded by the Louisiana State Mineral and Energy Board be subsequently modified, cancelled or abrogated due to the existence of conflicting leases, operating agreements, private claims or other future obligations or conditions which may affect all or any portion of the leased Tract, it shall not relieve the Lessee of the obligation to pay any bonus due thereon to the Louisiana State Mineral and Energy Board, nor shall the Louisiana State Mineral and Energy Board be obligated to refund any consideration paid by the Lessor prior to such modification, cancellation, or abrogation, including, but not limited to, bonuses, rentals and royalties.

NOTE: The State of Louisiana does hereby reserve, and this lease shall be subject to, the imprescriptible right of surface use in the nature of a servitude in favor of the Department of Natural Resources, including its Offices and Commissions, for the sole purpose of implementing, constructing, servicing and maintaining approved coastal zone management

and/or restoration projects. Utilization of any and all rights derived under this lease by the mineral lessee, its agents, successors or assigns, shall not interfere with nor hinder the reasonable surface use by the Department of Natural Resources, its Offices or Commissions, as herein above reserved.

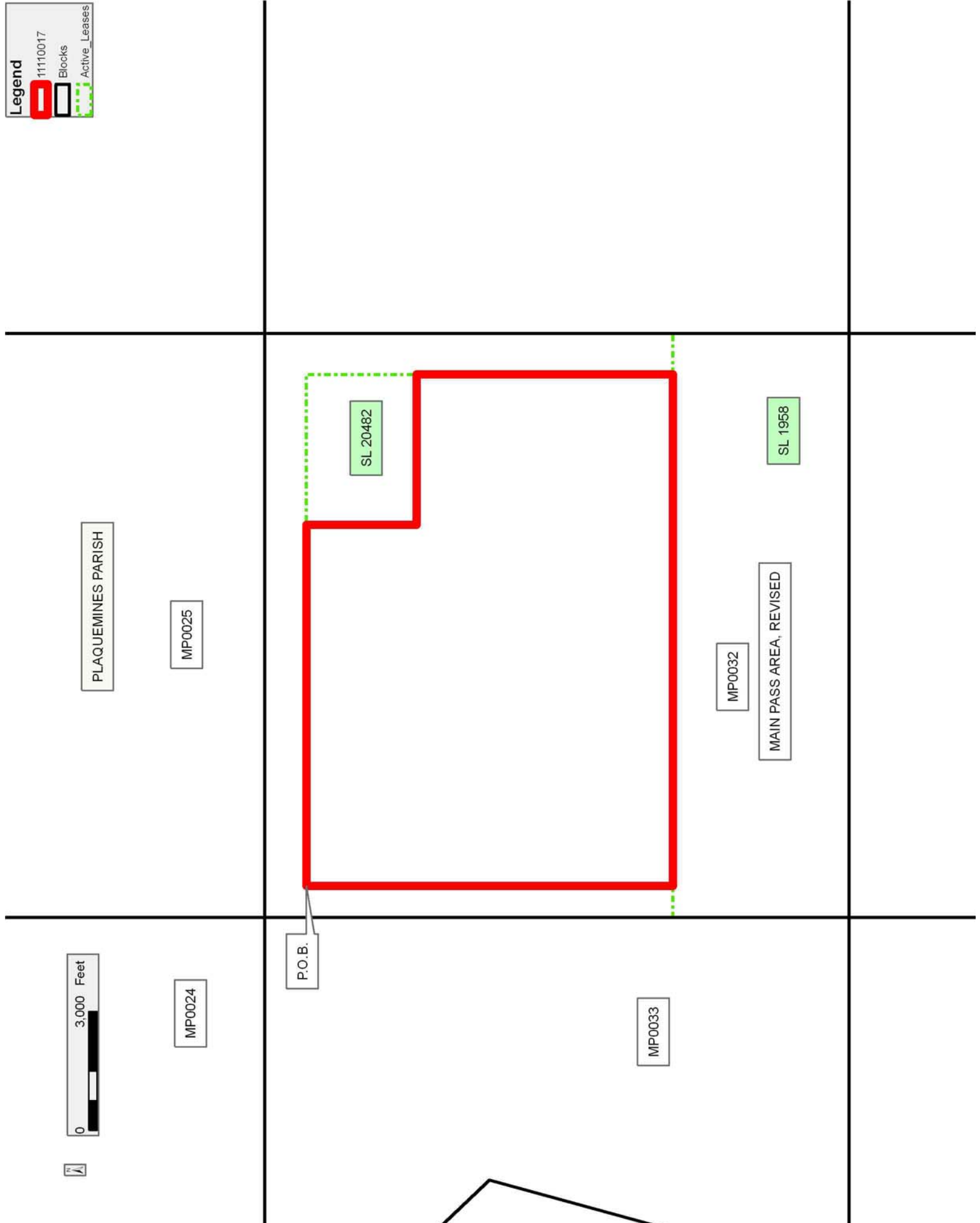
NOTE: This tract is located in an area designated by the Louisiana Legislature or the Wildlife and Fisheries Commission as a Public Oyster Seed Ground, Reservation, or area of Calcasieu or Sabine Lake. Proposed projects occurring in these areas will be evaluated on a case by case basis by Louisiana Department of Wildlife & Fisheries. Modifications to proposed project features including, but not limited to, access routes, well sites, flowlines, and appurtenant structures maybe required by the Louisiana Department of Wildlife and Fisheries. In addition, compensatory mitigation will be required to offset unavoidable habitat impacts.

Applicant: GERALD SCHWANDT

Bidder	Cash Payment	Price/Acre	Rental	Oil	Gas	Other

Legend

-  11110017
-  Blocks
-  Active_Leases



TRACT 42351 - Jefferson and Lafourche Parishes, Louisiana

All of the lands now or formerly constituting the beds and bottoms of all water bodies of every nature and description as to which title is vested in the State of Louisiana, together with all islands arising therein and other lands formed by accretion or by reliction, where allowed by law, excepting tax adjudicated lands, and not presently under mineral lease on November 9, 2011, situated in Jefferson and Lafourche Parishes, Louisiana, and more particularly described as follows: Beginning at a point having Coordinates of X = 2,374,824.00 and Y = 293,831.60; thence North 8,550.34 feet to a point on the Western boundary of State Lease No. 20057 having Coordinates of X = 2,374,824.00 and Y = 302,381.94; thence along the boundary of said State Lease No. 20057 the following courses: South 50 degrees 47 minutes 56 seconds East 79.15 feet to a point having Coordinates of X = 2,374,885.34 and Y = 302,331.91 and East 1,826.62 feet to a point on the Western boundary of State Lease No. 2383, as amended, having Coordinates of X = 2,376,711.96 and Y = 302,331.91; thence along the boundary of said State Lease No. 2383, the following courses: Southeasterly on an arc to the left with a radius of 2,025.00 feet and a center at X = 2,378,724.61 and Y = 302,555.17 to a point having Coordinates of X = 2,376,874.48 and Y = 301,731.98; Southeasterly on an arc to the left with a radius of 3,200.00 feet and a center at X = 2,380,056.13 and Y = 302,074.19 to a point having Coordinates of X = 2,376,916.09 and Y = 301,457.65; Southeasterly on an arc to the left with a radius of 1,450.00 feet and a center at X = 2,378,305.50 and Y = 301,872.43 to a point having Coordinates of X = 2,377,919.90 and Y = 300,474.64; Easterly on an arc to the left with a radius of 2,300.00 feet and a center at X = 2,378,532.11 and Y = 302,691.67 to a point having Coordinates of X = 2,379,144.31 and Y = 300,474.64; Northeasterly on an arc to the left with a radius of 3,075.00 feet and a center at X = 2,378,598.77 and Y = 303,500.86 to a point having Coordinates of X = 2,379,259.75 and Y = 300,497.74; Southeasterly on an arc to the left with a radius of 10,000.00 feet and a center at X = 2,381,034.69 and Y = 310,338.96 to a point having Coordinates of X = 2,379,475.12 and Y = 300,461.32; Southeasterly on an arc to the left with a radius of 3,075.00 feet and a center at X = 2,380,124.61 and Y = 303,466.95 to a point having Coordinates of X = 2,380,035.91 and Y = 300,393.23; Northeasterly on an arc to the left with a radius of 1,000.00 feet and a center at X = 2,380,043.51 and Y = 301,393.20 to a point having Coordinates of X = 2,380,443.85 and Y = 300,476.83; Northeasterly on an arc to the left with a radius of 750.00 feet and a center at X = 2,380,036.60 and Y = 301,106.63 to a point having Coordinates of X = 2,380,567.06 and Y = 300,576.42; Southeasterly on an arc to the left with a radius of 4,000.00 feet and a center at X = 2,381,552.26 and Y = 304,453.20 to a point having Coordinates of X = 2,381,012.49 and Y = 300,489.79; Southeasterly on an arc to the right with a radius of 10,000.00 feet and a center at X = 2,379,904.34 and Y = 290,551.37 to a point having Coordinates of X = 2,382,261.32 and Y = 300,269.64; Southeasterly on an arc to the left with a radius of 4,025.00 feet and a center at X = 2,383,166.07 and Y = 304,191.63 to a point having Coordinates of X = 2,382,914.05 and Y =

300,174.53; Northeasterly on an arc to the left with a radius of 1,025.00 feet and a center at X = 2,383,011.04 and Y = 301,194.93 to a point having Coordinates of X = 2,383,342.19 and Y = 300,224.90; Northeasterly on an arc to the left with a radius of 500.00 feet and a center at X = 2,383,106.54 and Y = 300,665.89 to a point having Coordinates of X = 2,383,529.22 and Y = 300,398.78; Northeasterly on an arc to the left with a radius of 1,000.00 feet and a center at X = 2,382,556.72 and Y = 300,631.68 to a point having Coordinates of X = 2,383,554.32 and Y = 300,700.94; Northwesterly on an arc to the left with a radius of 2,150.00 feet and a center at X = 2,381,404.85 and Y = 300,748.94 to a point having Coordinates of X = 2,382,803.36 and Y = 302,381.94; thence East 8,196.64 feet to a point having Coordinates X = 2,391,000.00 and Y = 302,381.94; thence South 3,481.94 feet to a point on the North line of State Lease No. 19039 having Coordinates of X = 2,391,000.00 and Y = 298,900.00; thence West 500.00 feet along the North line of said State Lease No. 19039 to a point on the Eastern boundary of State Lease No. 20058 having Coordinates of X = 2,390,500.00 and Y = 298,900.00; thence along the boundary of said State Lease No. 20058 the following courses: North 143.00 feet to a point having Coordinates of X = 2,390,500.00 and Y = 299,043.00; West 1,286.68 feet to a point having Coordinates of X = 2,389,213.32 and Y = 299,043.00 and South 00 degrees 06 minutes 12 seconds West 5,211.41 feet to a point having Coordinates of X = 2,389,203.92 and Y = 293,831.60; thence West 5,209.82 feet to the Southeast corner of State Lease No. 18146 having Coordinates of X = 2,383,994.10 and Y = 293,831.60; thence along the boundary of said State Lease No. 18146 the following courses: North 1,417.01 feet to a point having Coordinates of X = 2,383,994.10 and Y = 295,248.61; North 04 degrees 44 minutes 00 seconds West 3,305.85 feet to a point having Coordinates of X = 2,383,721.30 and Y = 298,543.18; West 5,612.97 feet to a point having Coordinates of X = 2,378,108.33 and Y = 298,543.18; South 19 degrees 31 minutes 34 seconds East 3,334.98 feet to a point having Coordinates of X = 2,379,223.00 and Y = 295,400.00; South 71 degrees 29 minutes 25 seconds West 2,441.41 feet to a point having Coordinates of X = 2,376,907.88 and Y = 294,624.94, and South 793.34 feet to a point having Coordinates of X = 2,376,907.88 and Y = 293,831.60; thence West 2,083.88 feet to the point of beginning, (This lease includes only waterbottoms claimed and owned by the state and specifically excludes any land which the state may claim or own and to which the mineral rights are vested in the state), **LESS AND EXCEPT** in its entirety State Lease No. 17780, as amended, more particularly described as follows: Beginning at a point having Coordinates of X = 2,387,440.00 and Y = 298,040.00; thence South 2,640.00 feet to a point having Coordinates of X = 2,387,440.00 and Y = 295,400.00; thence West 2,640.00 feet to a point having Coordinates of X = 2,384,800.00 and Y = 295,400.00; thence North 2,640.00 feet to a point having Coordinates of X = 2,384,800.00 and Y = 298,040.00, and East 2,640.00 feet to the point of beginning, and containing approximately 160 acres, containing approximately, nominated tract containing approximately **1,848 acres**, all as more particularly outlined on a plat on file in the Office of Mineral Resources, Department of Natural Resources. All

bearings, distances and coordinates are based on Louisiana Coordinate System of 1927, (North or South Zone), where applicable.

NOTE: The above description of the Tract nominated for lease has been provided and corrected, where required, exclusively by the nomination party. Any mineral lease selected from this Tract and awarded by the Louisiana State Mineral and Energy Board shall be without warranty of any kind, either express, implied, or statutory, including, but not limited to, the implied warranties of merchantability and fitness for a particular purpose. Should the mineral lease awarded by the Louisiana State Mineral and Energy Board be subsequently modified, cancelled or abrogated due to the existence of conflicting leases, operating agreements, private claims or other future obligations or conditions which may affect all or any portion of the leased Tract, it shall not relieve the Lessee of the obligation to pay any bonus due thereon to the Louisiana State Mineral and Energy Board, nor shall the Louisiana State Mineral and Energy Board be obligated to refund any consideration paid by the Lessor prior to such modification, cancellation, or abrogation, including, but not limited to, bonuses, rentals and royalties.

NOTE: The State of Louisiana does hereby reserve, and this lease shall be subject to, the imprescriptible right of surface use in the nature of a servitude in favor of the Department of Natural Resources, including its Offices and Commissions, for the sole purpose of implementing, constructing, servicing and maintaining approved coastal zone management and/or restoration projects. Utilization of any and all rights derived under this lease by the mineral lessee, its agents, successors or assigns, shall not interfere with nor hinder the reasonable surface use by the Department of Natural Resources, its Offices or Commissions, as herein above reserved.

NOTE: This tract is located in an area designated by the Louisiana Legislature or the Wildlife and Fisheries Commission as a Public Oyster Seed Ground, Reservation, or area of Calcasieu or Sabine Lake. Proposed projects occurring in these areas will be evaluated on a case by case basis by Louisiana Department of Wildlife & Fisheries. Modifications to proposed project features including, but not limited to, access routes, well sites, flowlines, and appurtenant structures maybe required by the Louisiana Department of Wildlife and Fisheries. In addition, compensatory mitigation will be required to offset unavoidable habitat impacts.

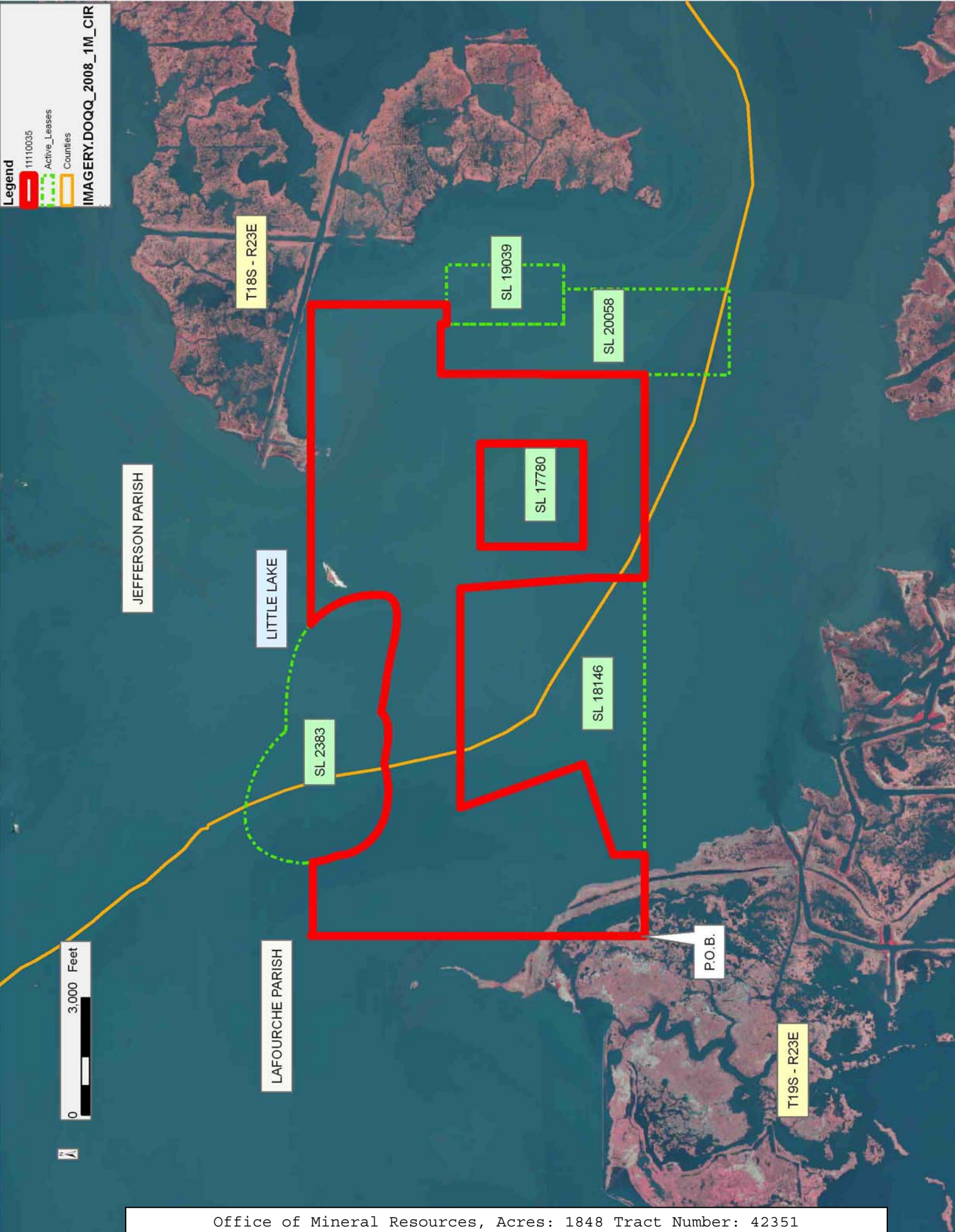
Applicant: ECL ENERGY CO.

Bidder	Cash Payment	Price/Acre	Rental	Oil	Gas	Other

Legend

- 11110035
- Active_Leases
- Counties

IMAGERY.DOQQ_2008_1M_CIR



TRACT 42352 - Jefferson and Lafourche Parishes, Louisiana

All of the lands now or formerly constituting the beds and bottoms of all water bodies of every nature and description as to which title is vested in the State of Louisiana, together with all islands arising therein and other lands formed by accretion or by reliction, where allowed by law, excepting tax adjudicated lands, and not presently under mineral lease on November 9, 2011, situated in Jefferson and Lafourche Parishes, Louisiana, and more particularly described as follows: Beginning at a point having Coordinates of X = 2,374,824.00 and Y = 293,831.60; thence East 2,083.88 feet to the Southwest corner of State Lease No. 18146 having Coordinates of X = 2,376,907.88 and Y = 293,831.60; thence East 7,086.22 feet along the South line of said State Lease No. 18146 to its Southeast corner having Coordinates of X = 2,383,994.10 and Y = 293,831.60; thence East 5,209.82 feet to a point on the West line of State Lease No. 20058 having Coordinates of X = 2,389,203.92 and Y = 293,831.60; thence along the boundary of said State Lease No. 20058 the following courses: South 00 degrees 06 minutes 12 seconds West 2,174.60 feet to a point having Coordinates of X = 2,389,200.00 and Y = 291,657.00 and East 1,800.00 feet to a point having Coordinates of X = 2,391,000.00 and Y = 291,657.00; thence South 2,168.00 feet to a point on the Northern boundary of State Lease No. 20061 having Coordinates of X = 2,391,000.00 and Y = 289,489.00; thence along the boundary of said State Lease No. 20061 the following courses: West 1,556.00 feet to a point having Coordinates of X = 2,389,444.00 and Y = 289,489.00 and South 3,289.00 feet to a point having Coordinates of X = 2,389,444.00 and Y = 286,200.00; thence Westerly approximately 3,032 feet to a point on the Eastern boundary of State Lease No. 5259, as amended; thence along the boundary of said State Lease No. 5259 the following courses: Northeasterly approximately 223 feet to a point having Coordinates of X = 2,386,600.00 and Y = 286,320.00, North 50 degrees 28 minutes 39 seconds East 518.56 feet to a point having Coordinates of X = 2,387,000.00 and Y = 286,650.00, Northeasterly on an arc to the right with a radius of 980.00 feet and a center at X = 2,386,262.70 and Y = 287,295.59 to a point having Coordinates of X = 2,386,301.38 and Y = 288,274.83, Southwesterly approximately 2,107 feet, Southerly approximately 721 feet, and Southeasterly approximately 628 feet to a point of intersection with an East-West line having a Coordinate of Y = 286,200.00; thence West approximately 773 feet to a point having Coordinates X = 2,384,120.00 and Y = 286,200.00; thence North 2,895.00 feet to a point having Coordinates of X = 2,384,120.00 and Y = 289,095.00; thence West 7,730.76 feet to a point on the Eastern boundary of State Lease No. 7501, as amended, having Coordinates of X = 2,376,389.24 and Y = 289,095.00; thence along the boundary of said State Lease No. 7501, as amended, the following courses: Northeasterly on an arc to the right with a radius of 6,366.00 feet and a center at X = 2,379,484.46 and Y = 283,532.13 to a point having Coordinates of X = 2,378,279.30 and Y = 289,783.01; Southeasterly on an arc to the right with a radius of 4,244.00 feet and a center at X = 2,378,834.55 and Y = 285,575.49 to a point having Coordinates of X = 2,379,624.30 and Y = 289,745.36; South 80 degrees 22 minutes 04 seconds East 1,466.38 feet to a point having Coordinates of X =

2,381,070.00 and Y = 289,500.00; Northeasterly on an arc to the left with a radius of 1,190.00 feet and a center at X = 2,381,233.56 and Y = 290,678.71 to a point having Coordinates of X = 2,382,005.22 and Y = 289,772.81; Northeasterly on an arc to the left with a radius of 1,515.00 feet and a center at X = 2,380,997.33 and Y = 290,903.90 to a point having Coordinates of X = 2,382,510.00 and Y = 290,820.00; Northwesterly on an arc to the left with a radius of 2,240.00 feet and a center at X = 2,380,280.60 and Y = 290,602.37 to a point having Coordinates of X = 2,382,110.00 and Y = 291,895.00; Northwesterly on an arc to the left with a radius of 5,209.00 feet and a center at X = 2,378,091.72 and Y = 288,580.32 to a point having Coordinates of X = 2,380,410.00 and Y = 293,245.00; Northwesterly on an arc to the left with a radius of 2,560.00 feet and a center at X = 2,379,335.92 and Y = 290,921.22 to a point having Coordinates of X = 2,379,415.00 and Y = 293,480.00; Southwesterly on an arc to the left with a radius of 2,560.00 feet and a center at X = 2,379,637.24 and Y = 290,929.66 to a point having Coordinates of X = 2,378,425.27 and Y = 293,184.60; Southwesterly on an arc to the left with a radius of 4,982.00 feet and a center at X = 2,380,960.24 and Y = 288,895.75 to a point having Coordinates of X = 2,378,301.75 and Y = 293,109.15; Southwesterly on an arc to the left with a radius of 1,650.00 feet and a center at X = 2,379,826.22 and Y = 292,477.89 to a point having Coordinates of X = 2,378,250.00 and Y = 291,990.00; Southwesterly on an arc to the right with a radius of 600.00 feet and a center at X = 2,377,675.49 and Y = 291,816.98 to a point having Coordinates of X = 2,377,980.00 and Y = 291,300.00; South 61 degrees 55 minutes 39 seconds West 1,020.00 feet to a point having Coordinates of X = 2,377,080.00 and Y = 290,820.00; Southwesterly on an arc to the left with a radius of 4,100.00 feet and a center at X = 2,378,855.06 and Y = 287,124.17 to a point having Coordinates of X = 2,375,430.56 and Y = 289,378.67; and Southeasterly on an arc with a radius of 364.78 and a center at X = 2,375,755.24 and Y = 289,212.39 to a point having Coordinates of X = 2,375,470.00 and Y = 288,985.00; thence West 646.00 feet to a point having Coordinates of X = 2,374,824.00 and Y = 288,985.00; thence North 4,846.60 feet to the to the point of beginning, (This lease includes only waterbottoms claimed and owned by the state and specifically excludes any land which the state may claim or own and to which the mineral rights are vested in the state), **LESS AND EXCEPT** that portion, if any of State Lease No. 5259 that may fall within the above described tract, containing approximately **1,235 acres**, all as more particularly outlined on a plat on file in the Office of Mineral Resources, Department of Natural Resources. All bearings, distances and coordinates are based on Louisiana Coordinate System of 1927, (North or South Zone), where applicable.

NOTE: The above description of the Tract nominated for lease has been provided and corrected, where required, exclusively by the nomination party. Any mineral lease selected from this Tract and awarded by the Louisiana State Mineral and Energy Board shall be without warranty of any kind, either express, implied, or statutory, including, but not limited to, the implied warranties of merchantability and fitness for a particular

purpose. Should the mineral lease awarded by the Louisiana State Mineral and Energy Board be subsequently modified, cancelled or abrogated due to the existence of conflicting leases, operating agreements, private claims or other future obligations or conditions which may affect all or any portion of the leased Tract, it shall not relieve the Lessee of the obligation to pay any bonus due thereon to the Louisiana State Mineral and Energy Board, nor shall the Louisiana State Mineral and Energy Board be obligated to refund any consideration paid by the Lessor prior to such modification, cancellation, or abrogation, including, but not limited to, bonuses, rentals and royalties.

NOTE: The State of Louisiana does hereby reserve, and this lease shall be subject to, the imprescriptible right of surface use in the nature of a servitude in favor of the Department of Natural Resources, including its Offices and Commissions, for the sole purpose of implementing, constructing, servicing and maintaining approved coastal zone management and/or restoration projects. Utilization of any and all rights derived under this lease by the mineral lessee, its agents, successors or assigns, shall not interfere with nor hinder the reasonable surface use by the Department of Natural Resources, its Offices or Commissions, as herein above reserved.

NOTE: This tract is located in an area designated by the Louisiana Legislature or the Wildlife and Fisheries Commission as a Public Oyster Seed Ground, Reservation, or area of Calcasieu or Sabine Lake. Proposed projects occurring in these areas will be evaluated on a case by case basis by Louisiana Department of Wildlife & Fisheries. Modifications to proposed project features including, but not limited to, access routes, well sites, flowlines, and appurtenant structures maybe required by the Louisiana Department of Wildlife and Fisheries. In addition, compensatory mitigation will be required to offset unavoidable habitat impacts.

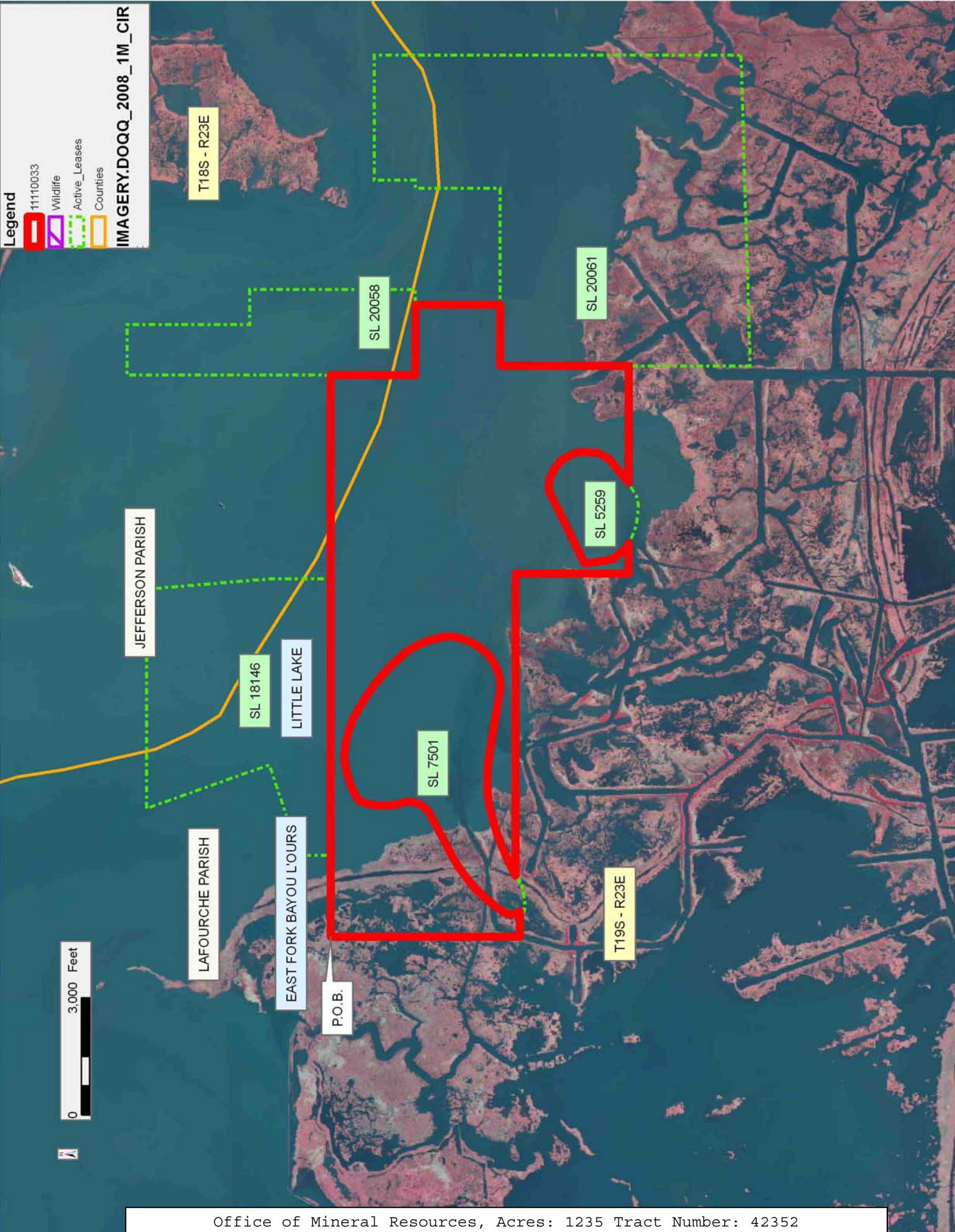
Applicant: ECL ENERGY CO.

Bidder	Cash Payment	Price/Acre	Rental	Oil	Gas	Other

Legend

- 11110033
- Wildlife
- Active_Leases
- Counties

IMAGERY.DOQQ_2008_1M_CIR



T18S - R23E

SL 20058

SL 20061

JEFFERSON PARISH

SL 18146

LITTLE LAKE

SL 5259

SL 7501

LAFOURCHE PARISH

EAST FORK BAYOU L'OURS

P.O.B.

T19S - R23E



TRACT 42353 - Lafourche Parish, Louisiana

All of the lands now or formerly constituting the beds and bottoms of all water bodies of every nature and description as to which title is vested in the State of Louisiana, together with all islands arising therein and other lands formed by accretion or by reliction, where allowed by law, excepting tax adjudicated lands, and not presently under mineral lease on November 9, 2011, situated in Lafourche Parish, Louisiana, and more particularly described as follows: Beginning at a point having Coordinates of X = 2,384,120.00 and Y = 277,800.00; thence West 5,799.20 feet to a point on the East boundary of State Lease No. 16918 having Coordinates of X = 2,378,320.80 and Y = 277,800.00; thence along the boundary of said State Lease No. 16918 the following courses: North 02 degrees 44 minutes 07 seconds East 2,129.96 feet to a point having Coordinates of X = 2,378,422.45 and Y = 279,927.53; South 41 degrees 06 minutes 16 seconds West 351.69 feet to a point having Coordinates of X = 2,378,191.24 and Y = 279,662.53; South 54 degrees 41 minutes 47 seconds West 128.13 feet to a point having Coordinates of X = 2,378,086.67 and Y = 279,588.48; South 64 degrees 43 minutes 50 seconds West 47.27 feet to a point having Coordinates of X = 2,378,043.92 and Y = 279,568.30; South 82 degrees 32 minutes 18 seconds West 397.19 feet to a point having Coordinates of X = 2,377,650.09 and Y = 279,516.72; North 77 degrees 04 minutes 59 seconds West 471.37 feet to a point having Coordinates of X = 2,377,190.65 and Y = 279,622.09; and South 09 degrees 00 minutes 22 seconds West 1,844.83 feet to a point having Coordinates of X = 2,376,901.86 and Y = 277,800.00; thence West 2,077.86 feet to a point having Coordinates of X = 2,374,824.00 and Y = 277,800.00; thence North 11,185.00 feet to a point having Coordinates of X = 2,374,824.00 and Y = 288,985.00; thence East 646.00 feet to a point on the Southern boundary of State Lease No. 7501, as amended, having Coordinates of X = 2,375,470.00 and Y = 288,985.00; thence along the boundary of said State Lease No. 7501 the following courses: Southeasterly on an arc to the left with a radius of 348.04 and a center at X = 2,375,724.23 and Y = 289,222.69 to a point having Coordinates of X = 2,375,785.00 and Y = 288,880.00 and Northeasterly on an arc to the left with a radius of 820.28 and a center at X = 2,375,834.02 and Y = 289,698.81 to a point having Coordinates of X = 2,376,389.24 and Y = 289,095.00; thence East 7,730.76 feet to a point having Coordinates of X = 2,384,120.00 and Y = 289,095.00; thence South 11,295.00 feet to the point of beginning, containing approximately **63 acres**, all as more particularly outlined on a plat on file in the Office of Mineral Resources, Department of Natural Resources. All bearings, distances and coordinates are based on Louisiana Coordinate System of 1927, (North or South Zone), where applicable.

NOTE: The above description of the Tract nominated for lease has been provided and corrected, where required, exclusively by the nomination party. Any mineral lease selected from this Tract and awarded by the Louisiana State Mineral and Energy Board shall be without warranty of any kind, either express, implied, or statutory, including, but not limited to, the implied warranties of merchantability and fitness for a particular

purpose. Should the mineral lease awarded by the Louisiana State Mineral and Energy Board be subsequently modified, cancelled or abrogated due to the existence of conflicting leases, operating agreements, private claims or other future obligations or conditions which may affect all or any portion of the leased Tract, it shall not relieve the Lessee of the obligation to pay any bonus due thereon to the Louisiana State Mineral and Energy Board, nor shall the Louisiana State Mineral and Energy Board be obligated to refund any consideration paid by the Lessor prior to such modification, cancellation, or abrogation, including, but not limited to, bonuses, rentals and royalties.

NOTE: The State of Louisiana does hereby reserve, and this lease shall be subject to, the imprescriptible right of surface use in the nature of a servitude in favor of the Department of Natural Resources, including its Offices and Commissions, for the sole purpose of implementing, constructing, servicing and maintaining approved coastal zone management and/or restoration projects. Utilization of any and all rights derived under this lease by the mineral lessee, its agents, successors or assigns, shall not interfere with nor hinder the reasonable surface use by the Department of Natural Resources, its Offices or Commissions, as herein above reserved.

NOTE: This tract is located in an area designated by the Louisiana Legislature or the Wildlife and Fisheries Commission as a Public Oyster Seed Ground, Reservation, or area of Calcasieu or Sabine Lake. Proposed projects occurring in these areas will be evaluated on a case by case basis by Louisiana Department of Wildlife & Fisheries. Modifications to proposed project features including, but not limited to, access routes, well sites, flowlines, and appurtenant structures maybe required by the Louisiana Department of Wildlife and Fisheries. In addition, compensatory mitigation will be required to offset unavoidable habitat impacts.

Applicant: ECL ENERGY CO.

Bidder	Cash Payment	Price/Acre	Rental	Oil	Gas	Other

Legend

- 11110034
- Active_Leases
- Countries

IMAGERY.DOQQ_2008_1M_CIR

LITTLE LAKE

EAST FORK BAYOU L'OURS

P.O.B.

LAFOURCHE PARISH

SL 7501

SL 16918

KINGS RIDGE BAYOU

0 2,000 Feet

TRACT 42354 - Lafourche Parish, Louisiana

All of the lands now or formerly constituting the beds and bottoms of all water bodies of every nature and description as to which title is vested in the State of Louisiana, together with all islands arising therein and other lands formed by accretion or by reliction, where allowed by law, excepting tax adjudicated lands, and not presently under mineral lease on November 9, 2011, situated in Lafourche Parish, Louisiana, and more particularly described as follows: Beginning at a point having Coordinates of X = 2,384,120.00 and Y = 277,800.00; thence North 8,400.00 feet to a point having Coordinates of X = 2,384,120.00 and Y = 286,200.00; thence East approximately 773 feet to a point on the Western boundary of State Lease No. 5259, as amended; thence along the boundary of said State Lease No. 5259 the following courses: Southeasterly and Northeasterly to a point of intersection with an East- West line having a Coordinate of Y = 286,200.00; thence East approximately 3,032 feet to a point on the boundary of State Lease No. 20061 having Coordinates of X = 2,389,444.00 and Y = 286,200.00; thence along the boundary of said State Lease No. 20061 the following courses: South 3,114.57 feet to a point having Coordinates of X = 2,389,444.00 and Y = 283,085.43 and North 88 degrees 18 minutes 22 seconds East 7,959.48 feet to its Southeast corner, said corner also being a point on the West boundary line of State Lease No. 20062, having Coordinates of X = 2,397,400.00 and Y = 283,320.72; thence along the boundary of said State Lease No. 20062 the following courses: South 2,207.79 feet to a point having Coordinates of X = 2,397,400.00 and Y = 281,112.93 and North 89 degrees 53 minutes 21 seconds East approximately 648 feet to the Northwest corner of State Lease No. 1217; thence South approximately 3,314 feet along the West line of said State Lease No. 1217 to a point of intersection with an East-West line having a Coordinate of Y = 277,800.00; thence West approximately 13,928 feet to the point of beginning, **LESS AND EXCEPT** that portion, if any of State Lease Nos. 5259, 1217, and 20062 that may fall within the above described tract, containing approximately **119 acres**, all as more particularly outlined on a plat on file in the Office of Mineral Resources, Department of Natural Resources. All bearings, distances and coordinates are based on Louisiana Coordinate System of 1927, (North or South Zone), where applicable.

NOTE: The above description of the Tract nominated for lease has been provided and corrected, where required, exclusively by the nomination party. Any mineral lease selected from this Tract and awarded by the Louisiana State Mineral and Energy Board shall be without warranty of any kind, either express, implied, or statutory, including, but not limited to, the implied warranties of merchantability and fitness for a particular purpose. Should the mineral lease awarded by the Louisiana State Mineral and Energy Board be subsequently modified, cancelled or abrogated due to the existence of conflicting leases, operating agreements, private claims or other future obligations or conditions which may affect all or any portion of the leased Tract, it shall not relieve the Lessee of the obligation to pay any bonus due thereon to the Louisiana State Mineral and Energy Board, nor shall the Louisiana State Mineral and Energy Board be

obligated to refund any consideration paid by the Lessor prior to such modification, cancellation, or abrogation, including, but not limited to, bonuses, rentals and royalties.

NOTE: The State of Louisiana does hereby reserve, and this lease shall be subject to, the imprescriptible right of surface use in the nature of a servitude in favor of the Department of Natural Resources, including its Offices and Commissions, for the sole purpose of implementing, constructing, servicing and maintaining approved coastal zone management and/or restoration projects. Utilization of any and all rights derived under this lease by the mineral lessee, its agents, successors or assigns, shall not interfere with nor hinder the reasonable surface use by the Department of Natural Resources, its Offices or Commissions, as herein above reserved.

NOTE: This tract is located in an area designated by the Louisiana Legislature or the Wildlife and Fisheries Commission as a Public Oyster Seed Ground, Reservation, or area of Calcasieu or Sabine Lake. Proposed projects occurring in these areas will be evaluated on a case by case basis by Louisiana Department of Wildlife & Fisheries. Modifications to proposed project features including, but not limited to, access routes, well sites, flowlines, and appurtenant structures maybe required by the Louisiana Department of Wildlife and Fisheries. In addition, compensatory mitigation will be required to offset unavoidable habitat impacts.

Applicant: ECL ENERGY CO.

Bidder	Cash Payment	Price/Acre	Rental	Oil	Gas	Other

Legend

11110032

Active_Leases

IMAGERY.DOQQ_2008_1M_CIR

LAFOURCHE PARISH

T19S - R23E

COFFEE BAYOU

SNAIL BAYOU

SL 1217

SL 20062

SL 20061

EAST FORK BAYOU L'OURS

LITTLE LAKE

SL 5259

BAYOU AESCHILE

P.O.B.

0 2,000 Feet

TRACT 42355 - Lafourche Parish, Louisiana

All of the lands now or formerly constituting the beds and bottoms of all water bodies of every nature and description as to which title is vested in the State of Louisiana, together with all islands arising therein and other lands formed by accretion or by reliction, where allowed by law, excepting tax adjudicated lands, and not presently under mineral lease on November 9, 2011, situated in Lafourche Parish, Louisiana, and more particularly described as follows: Beginning at a point having Coordinates of X = 2,336,219.91 and Y = 217,432.92; thence Easterly approximately 10,095 feet to the Southwest corner of State Lease No. 1908, as amended; thence Easterly approximately 5,024 feet along the South boundary of said State Lease No. 1908 to its Southeast corner, also being the Northwest corner of State Lease No. 19647; thence along the boundary of said State Lease No. 19647 the following courses and distances: Southeasterly approximately 4,663 feet to a point having Coordinates of X = 2,352,207.71 and Y = 212,959.79, and South 00 degrees 51 minutes 26 seconds East 1,822.95 feet to a point having Coordinates of X = 2,352,234.99 and Y = 211,137.04; thence South 87 degrees 11 minutes 02 seconds West 15,758.07 feet to a point having Coordinates of X = 2,336,495.95 and Y = 210,362.80; thence North 02 degrees 14 minutes 09 seconds West 7,075.51 feet to the point of beginning, (This tract includes only waterbottoms claimed and owned by the state and specifically excludes any land which the state may claim or own and to which the mineral rights are vested in the state), **LESS AND EXCEPT** any portion of said State Lease No. 1908 and State Lease No. 19647 that may lie within the above described tract, containing approximately **1,270 acres**, all as more particularly outlined on a plat on file in the Office of Mineral Resources, Department of Natural Resources. All bearings, distances and coordinates are based on Louisiana Coordinate System of 1927, (North or South Zone), where applicable.

NOTE: The above description of the Tract nominated for lease has been provided and corrected, where required, exclusively by the nomination party. Any mineral lease selected from this Tract and awarded by the Louisiana State Mineral and Energy Board shall be without warranty of any kind, either express, implied, or statutory, including, but not limited to, the implied warranties of merchantability and fitness for a particular purpose. Should the mineral lease awarded by the Louisiana State Mineral and Energy Board be subsequently modified, cancelled or abrogated due to the existence of conflicting leases, operating agreements, private claims or other future obligations or conditions which may affect all or any portion of the leased Tract, it shall not relieve the Lessee of the obligation to pay any bonus due thereon to the Louisiana State Mineral and Energy Board, nor shall the Louisiana State Mineral and Energy Board be obligated to refund any consideration paid by the Lessor prior to such modification, cancellation, or abrogation, including, but not limited to, bonuses, rentals and royalties.

NOTE: The State of Louisiana does hereby reserve, and this lease shall be subject to, the imprescriptible right of surface use in the nature of a

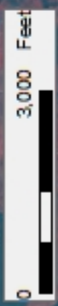
servitude in favor of the Department of Natural Resources, including its Offices and Commissions, for the sole purpose of implementing, constructing, servicing and maintaining approved coastal zone management and/or restoration projects. Utilization of any and all rights derived under this lease by the mineral lessee, its agents, successors or assigns, shall not interfere with nor hinder the reasonable surface use by the Department of Natural Resources, its Offices or Commissions, as herein above reserved.

Applicant: SOUTHERN OIL & GAS COMPANY, INC.

Bidder	Cash Payment	Price/Acre	Rental	Oil	Gas	Other

Legend

111110021
 Active Leases
 IMAGERY.DOQQ_2008_1M_CIR



LAFOURCHE PARISH

SL 1908

GRAND BAYOU BLUE

BAYOU PIERRE ET LEE

SL 19647

T21S - R22E

P.O.B.

LITTLE LAKE

TRACT 42356 - Lafourche Parish, Louisiana

All of the lands now or formerly constituting the beds and bottoms of all water bodies of every nature and description as to which title is vested in the State of Louisiana, together with all islands arising therein and other lands formed by accretion or by reliction, where allowed by law, excepting tax adjudicated lands, and not presently under mineral lease on November 9, 2011, situated in Lafourche Parish, Louisiana, and more particularly described as follows: Beginning at a point having Coordinates of X = 2,323,048.95 and Y = 217,432.92; thence East 13,170.97 feet to a point having Coordinates of X = 2,336,219.91 and Y = 217,432.92; thence South 02 degrees 14 minutes 09 seconds East 7,075.51 feet to a point having Coordinates of X = 2,336,495.95 and Y = 210,362.80; thence West 13,447.01 feet to a point having Coordinates of X = 2,323,048.95 and Y = 210,362.80; thence North 7,070.12 feet to the point of beginning, containing approximately **1,656 acres**, all as more particularly outlined on a plat on file in the Office of Mineral Resources, Department of Natural Resources. All bearings, distances and coordinates are based on Louisiana Coordinate System of 1927, (North or South Zone), where applicable.

NOTE: The above description of the Tract nominated for lease has been provided and corrected, where required, exclusively by the nomination party. Any mineral lease selected from this Tract and awarded by the Louisiana State Mineral and Energy Board shall be without warranty of any kind, either express, implied, or statutory, including, but not limited to, the implied warranties of merchantability and fitness for a particular purpose. Should the mineral lease awarded by the Louisiana State Mineral and Energy Board be subsequently modified, cancelled or abrogated due to the existence of conflicting leases, operating agreements, private claims or other future obligations or conditions which may affect all or any portion of the leased Tract, it shall not relieve the Lessee of the obligation to pay any bonus due thereon to the Louisiana State Mineral and Energy Board, nor shall the Louisiana State Mineral and Energy Board be obligated to refund any consideration paid by the Lessor prior to such modification, cancellation, or abrogation, including, but not limited to, bonuses, rentals and royalties.

NOTE: The State of Louisiana does hereby reserve, and this lease shall be subject to, the imprescriptible right of surface use in the nature of a servitude in favor of the Department of Natural Resources, including its Offices and Commissions, for the sole purpose of implementing, constructing, servicing and maintaining approved coastal zone management and/or restoration projects. Utilization of any and all rights derived under this lease by the mineral lessee, its agents, successors or assigns, shall not interfere with nor hinder the reasonable surface use by the Department of Natural Resources, its Offices or Commissions, as herein above reserved.

Applicant: SOUTHERN OIL & GAS COMPANY, INC.

Bidder	Cash Payment	Price/Acre	Rental	Oil	Gas	Other



Legend

11110024
Counties

IMAGERY.DOQQ_2008_1M_CIR

LAFOURCHE PARISH

CHINA BAYOU

LITTLE LAKE

BAYOU ROSA

LAKE RACCOURCI

P.O.B.

0 3,000 Feet

TRACT 42357 - Lafourche Parish, Louisiana

All of the lands now or formerly constituting the beds and bottoms of all water bodies of every nature and description as to which title is vested in the State of Louisiana, together with all islands arising therein and other lands formed by accretion or by reliction, where allowed by law, excepting tax adjudicated lands, and not presently under mineral lease on November 9, 2011, situated in Lafourche Parish, Louisiana, and more particularly described as follows: Beginning at a point having Coordinates of X = 2,336,495.95 and Y = 210,362.80; thence North 87 degrees 11 minutes 02 seconds East 15,758.07 feet to a point on the boundary of State Lease No. 19647 having Coordinates of X = 2,352,234.99 and Y = 211,137.04; thence along the boundary of said State Lease No. 19647 the following courses and distances: South 00 degrees 51 minutes 26 seconds East 3,186.79 feet and South 03 degrees 30 minutes 00 seconds East 2,639.78 feet to its Southwest corner, also being a point on the boundary of State Lease No. 20185 having Coordinates of X = 2,352,443.83 and Y = 205,315.75; thence along the boundary of said State Lease No. 20185 the following courses and distances: West 2,218.83 feet and South 937.70 feet to a point having Coordinates of X = 2,350,225.00 and Y = 204,378.05; thence South 88 degrees 32 minutes 02 seconds West 13,486.37 feet to a point having Coordinates of X = 2,336,743.05 and Y = 204,032.99; thence North 02 degrees 14 minutes 08 seconds West 6,334.63 feet to the point of beginning, containing approximately **1,530 acres**, all as more particularly outlined on a plat on file in the Office of Mineral Resources, Department of Natural Resources. All bearings, distances and coordinates are based on Louisiana Coordinate System of 1927, (North or South Zone), where applicable.

NOTE: The above description of the Tract nominated for lease has been provided and corrected, where required, exclusively by the nomination party. Any mineral lease selected from this Tract and awarded by the Louisiana State Mineral and Energy Board shall be without warranty of any kind, either express, implied, or statutory, including, but not limited to, the implied warranties of merchantability and fitness for a particular purpose. Should the mineral lease awarded by the Louisiana State Mineral and Energy Board be subsequently modified, cancelled or abrogated due to the existence of conflicting leases, operating agreements, private claims or other future obligations or conditions which may affect all or any portion of the leased Tract, it shall not relieve the Lessee of the obligation to pay any bonus due thereon to the Louisiana State Mineral and Energy Board, nor shall the Louisiana State Mineral and Energy Board be obligated to refund any consideration paid by the Lessor prior to such modification, cancellation, or abrogation, including, but not limited to, bonuses, rentals and royalties.

NOTE: The State of Louisiana does hereby reserve, and this lease shall be subject to, the imprescriptible right of surface use in the nature of a servitude in favor of the Department of Natural Resources, including its Offices and Commissions, for the sole purpose of implementing,

constructing, servicing and maintaining approved coastal zone management and/or restoration projects. Utilization of any and all rights derived under this lease by the mineral lessee, its agents, successors or assigns, shall not interfere with nor hinder the reasonable surface use by the Department of Natural Resources, its Offices or Commissions, as herein above reserved.

Applicant: SOUTHERN OIL & GAS COMPANY, INC.

Bidder	Cash Payment	Price/Acre	Rental	Oil	Gas	Other



Legend

1 11110022

IMAGERY.D00Q_2008_1M_CIR

LAFOURCHE PARISH

LITTLE LAKE

HACKBERRY BAY

T21S - R22E

SL 19647

SL 20185

0 3,000 Feet

P.O.B.

TRACT 42358 - Lafourche Parish, Louisiana

All of the lands now or formerly constituting the beds and bottoms of all water bodies of every nature and description as to which title is vested in the State of Louisiana, together with all islands arising therein and other lands formed by accretion or by reliction, where allowed by law, excepting tax adjudicated lands, and not presently under mineral lease on November 9, 2011, situated in Lafourche Parish, Louisiana, and more particularly described as follows: Beginning at a point having Coordinates of X = 2,323,048.94 and Y = 210,362.80; thence East 13,447.01 feet to a point having Coordinates of X = 2,336,495.95 and Y = 210,362.80; thence South 02 degrees 14 minutes 08 seconds East 6,334.63 feet to a point having Coordinates of X = 2,336,743.05 and Y = 204,032.99; thence West 12,418.78 feet to a point on the boundary of State Lease No. 14589 having Coordinates of X = 2,324,324.27 and Y = 204,032.99; thence along the boundary of said State Lease No. 14589 the following courses and distances: North 5,062.75 feet and West 1,275.33 feet to a point having Coordinates of X = 2,323,048.94 and Y = 209,095.74; thence North 1,267.06 feet to the point of beginning, (This tract includes only waterbottoms claimed and owned by the state and specifically excludes any land which the state may claim or own and to which the mineral rights are vested in the state), containing approximately **1,558 acres**, all as more particularly outlined on a plat on file in the Office of Mineral Resources, Department of Natural Resources. All bearings, distances and coordinates are based on Louisiana Coordinate System of 1927, (North or South Zone), where applicable.

NOTE: The above description of the Tract nominated for lease has been provided and corrected, where required, exclusively by the nomination party. Any mineral lease selected from this Tract and awarded by the Louisiana State Mineral and Energy Board shall be without warranty of any kind, either express, implied, or statutory, including, but not limited to, the implied warranties of merchantability and fitness for a particular purpose. Should the mineral lease awarded by the Louisiana State Mineral and Energy Board be subsequently modified, cancelled or abrogated due to the existence of conflicting leases, operating agreements, private claims or other future obligations or conditions which may affect all or any portion of the leased Tract, it shall not relieve the Lessee of the obligation to pay any bonus due thereon to the Louisiana State Mineral and Energy Board, nor shall the Louisiana State Mineral and Energy Board be obligated to refund any consideration paid by the Lessor prior to such modification, cancellation, or abrogation, including, but not limited to, bonuses, rentals and royalties.

NOTE: The State of Louisiana does hereby reserve, and this lease shall be subject to, the imprescriptible right of surface use in the nature of a servitude in favor of the Department of Natural Resources, including its Offices and Commissions, for the sole purpose of implementing, constructing, servicing and maintaining approved coastal zone management and/or restoration projects. Utilization of any and all rights derived

under this lease by the mineral lessee, its agents, successors or assigns, shall not interfere with nor hinder the reasonable surface use by the Department of Natural Resources, its Offices or Commissions, as herein above reserved.

Applicant: SOUTHERN OIL & GAS COMPANY, INC.

Bidder	Cash Payment	Price/Acre	Rental	Oil	Gas	Other

Legend
11110023
Active_Leases
IMAGERY.DOQQ_2008_1M_CIR



LAFOURCHE PARISH

LAKE RACCOURCI

P.O.B.



SL 14589

LITTLE LAKE

TIMBALIER BAY