

TRACT 42388 - East Carroll Parish, Louisiana

All of the lands now or formerly constituting the beds and bottoms of all water bodies of every nature and description as to which title is vested in the State of Louisiana, together with all islands arising therein and other lands formed by accretion or by reliction, where allowed by law, excepting tax adjudicated lands, and not presently under mineral lease on December 14, 2011, situated in East Carroll Parish, Louisiana, and more particularly described as follows: Beginning at a point having Coordinates of X = 2,404,680.00 and Y = 771,660.00; thence East 9,000.00 feet to a point having Coordinates of X = 2,413,680.00 and Y = 771,660.00; thence South 13,710.00 feet to a point having Coordinates of X = 2,413,680.00 and Y = 757,950.00; thence West 9,000.00 feet to a point having Coordinates of X = 2,404,680.00 and Y = 757,950.00; thence North 13,710.00 feet to the point of beginning, and **LESS AND EXCEPT** that portion, if any, of the above described tract that may lie within the State of Mississippi, containing approximately **58 acres**, all as more particularly outlined on a plat on file in the Office of Mineral Resources, Department of Natural Resources. All bearings, distances and coordinates are based on Louisiana Coordinate System of 1927, (North or South Zone), where applicable.

NOTE: The above description of the Tract nominated for lease has been provided and corrected, where required, exclusively by the nomination party. Any mineral lease selected from this Tract and awarded by the Louisiana State Mineral and Energy Board shall be without warranty of any kind, either express, implied, or statutory, including, but not limited to, the implied warranties of merchantability and fitness for a particular purpose. Should the mineral lease awarded by the Louisiana State Mineral and Energy Board be subsequently modified, cancelled or abrogated due to the existence of conflicting leases, operating agreements, private claims or other future obligations or conditions which may affect all or any portion of the leased Tract, it shall not relieve the Lessee of the obligation to pay any bonus due thereon to the Louisiana State Mineral and Energy Board, nor shall the Louisiana State Mineral and Energy Board be obligated to refund any consideration paid by the Lessor prior to such modification, cancellation, or abrogation, including, but not limited to, bonuses, rentals and royalties.

Applicant: THEOPHILUS OIL, GAS & LAND SERVICES, LLC

Bidder	Cash Payment	Price/Acre	Rental	Oil	Gas	Other

Legend

11120028

Countries

IMAGERY.DOQQ_2004_1M

EAST CARROLL PARISH

P.O.B.

MISSISSIPPI RIVER

T21N - R12E

T20N - R12E

0 4,200 Feet

TRACT 42389 - East Carroll Parish, Louisiana

All of the lands now or formerly constituting the beds and bottoms of all water bodies of every nature and description as to which title is vested in the State of Louisiana, together with all islands arising therein and other lands formed by accretion or by reliction, where allowed by law, excepting tax adjudicated lands, and not presently under mineral lease on December 14, 2011, situated in East Carroll Parish, Louisiana, and more particularly described as follows: Beginning at a point having Coordinates of X = 2,357,350.00 and Y = 762,770.00; thence East 15,750.00 feet to a point having Coordinates of X = 2,373,100.00 and Y = 762,770.00; thence South 15,960.00 feet to a point having Coordinates of X = 2,373,100.00 and Y = 746,810.00; thence West 15,750.00 feet to a point having Coordinates of X = 2,357,350.00 and Y = 746,810.00; thence North 15,960.00 feet to the point of beginning, containing approximately **68 acres**, all as more particularly outlined on a plat on file in the Office of Mineral Resources, Department of Natural Resources. All bearings, distances and coordinates are based on Louisiana Coordinate System of 1927, (North or South Zone), where applicable.

NOTE: The above description of the Tract nominated for lease has been provided and corrected, where required, exclusively by the nomination party. Any mineral lease selected from this Tract and awarded by the Louisiana State Mineral and Energy Board shall be without warranty of any kind, either express, implied, or statutory, including, but not limited to, the implied warranties of merchantability and fitness for a particular purpose. Should the mineral lease awarded by the Louisiana State Mineral and Energy Board be subsequently modified, cancelled or abrogated due to the existence of conflicting leases, operating agreements, private claims or other future obligations or conditions which may affect all or any portion of the leased Tract, it shall not relieve the Lessee of the obligation to pay any bonus due thereon to the Louisiana State Mineral and Energy Board, nor shall the Louisiana State Mineral and Energy Board be obligated to refund any consideration paid by the Lessor prior to such modification, cancellation, or abrogation, including, but not limited to, bonuses, rentals and royalties.

Applicant: THEOPHILUS OIL, GAS & LAND SERVICES, LLC

Bidder	Cash Payment	Price/Acre	Rental	Oil	Gas	Other

Legend

11/20/2025

IMAGERY.DOQQ_2004_1M

EAST CARROLL PARISH

T21N - R11E

BAXTER BAYOU

JOE'S BAYOU

P.O.B.

JUMP LOG BAYOU

T20N - R11E

4,000 Feet



TRACT 42390 - East Carroll and West Carroll Parishes, Louisiana

All of the lands now or formerly constituting the beds and bottoms of all water bodies of every nature and description as to which title is vested in the State of Louisiana, together with all islands arising therein and other lands formed by accretion or by reliction, where allowed by law, excepting tax adjudicated lands, and not presently under mineral lease on December 14, 2011, situated in East Carroll and West Carroll Parishes, Louisiana, and more particularly described as follows: Beginning at a point having Coordinates of X = 2,341,295.00 and Y = 762,770.00; thence East 16,055.00 feet to a point having Coordinates of X = 2,357,350.00 and Y = 762,770.00; thence South 15,960.00 feet to a point having Coordinates of X = 2,357,350.00 and Y = 746,810.00; thence West 16,055.00 feet to a point having Coordinates of X = 2,341,295.00 and Y = 746,810.00; thence North 15,960.00 feet to the point of beginning, containing approximately **41 acres**, all as more particularly outlined on a plat on file in the Office of Mineral Resources, Department of Natural Resources. All bearings, distances and coordinates are based on Louisiana Coordinate System of 1927, (North or South Zone), where applicable.

NOTE: The above description of the Tract nominated for lease has been provided and corrected, where required, exclusively by the nomination party. Any mineral lease selected from this Tract and awarded by the Louisiana State Mineral and Energy Board shall be without warranty of any kind, either express, implied, or statutory, including, but not limited to, the implied warranties of merchantability and fitness for a particular purpose. Should the mineral lease awarded by the Louisiana State Mineral and Energy Board be subsequently modified, cancelled or abrogated due to the existence of conflicting leases, operating agreements, private claims or other future obligations or conditions which may affect all or any portion of the leased Tract, it shall not relieve the Lessee of the obligation to pay any bonus due thereon to the Louisiana State Mineral and Energy Board, nor shall the Louisiana State Mineral and Energy Board be obligated to refund any consideration paid by the Lessor prior to such modification, cancellation, or abrogation, including, but not limited to, bonuses, rentals and royalties.

Applicant: THEOPHILUS OIL, GAS & LAND SERVICES, LLC

Bidder	Cash Payment	Price/Acre	Rental	Oil	Gas	Other

Legend
11120024
Counties
IMAGERY.DOQQ_2004_1M

EAST CARROLL PARISH

BAXTER BAYOU

T20N - R11E

BAYOU MACON

WEST CARROLL PARISH

T21N - R11E

P.O.B.

0 4,000 Feet



TRACT 42391 - East Carroll Parish, Louisiana

All of the lands now or formerly constituting the beds and bottoms of all water bodies of every nature and description as to which title is vested in the State of Louisiana, together with all islands arising therein and other lands formed by accretion or by reliction, where allowed by law, excepting tax adjudicated lands, and not presently under mineral lease on December 14, 2011, situated in East Carroll Parish, Louisiana, and more particularly described as follows: Beginning at a point having Coordinates of X = 2,434,200.00 and Y = 758,950.00; thence East 8,105.85 feet to a point having Coordinates of X = 2,442,305.85 and Y = 758,950.00; thence South approximately 4,880 feet to a point of intersection with the Northeastern boundary of State Lease No. 20444, said to be a point on the navigation channel of the Mississippi River, having a Coordinate of X = 2,442,305.85; thence along the boundaries of said State Lease No. 20444 as follows: Northwesterly along the meanders of said navigation channel to the point of intersection with a line having a bearing of North 50 degrees 51 minutes 55 seconds East extended from a point having Coordinates of X = 2,438,029.36 and Y = 753,147.81; South 50 degrees 51 minutes 55 seconds West approximately 2,168 feet along said line to said point having Coordinates of X = 2,438,029.36 and Y = 753,147.81; South 65 degrees 52 minutes 21 seconds East 1,529.91 feet to a point having Coordinates of X = 2,439,425.61 and Y = 752,522.43; South 64 degrees 20 minutes 31 seconds East 1,786.63 feet to a point having Coordinates of X = 2,441,036.07 and Y = 751,748.82; South 50 degrees 05 minutes 14 seconds East 1,736.22 feet to a point having Coordinates of X = 2,442,367.80 and Y = 750,634.83; South 41 degrees 43 minutes 21 seconds East 702.66 feet to a point having Coordinates of X = 2,442,835.43 and Y = 750,110.38; South 39 degrees 44 minutes 15 seconds East 895.68 feet to a point having Coordinates of X = 2,443,408.01 and Y = 749,421.62; South 19 degrees 13 minutes 40 seconds East 802.29 feet to a point having Coordinates of X = 2,443,672.23 and Y = 748,664.08 and North 78 degrees 05 minutes 34 seconds East approximately 1,966 feet to its Southeast corner, said to be a point on said navigation channel; thence Southerly approximately 3,100 feet to a point having Coordinates of X = 2,445,595.77 and Y = 745,970.00; thence West 11,395.77 feet to a point having Coordinates of X = 2,434,200.00 and Y = 745,970.00; thence North 12,980.00 feet to the point of beginning, **LESS AND EXCEPT**, that portion, if any, of said State Lease No. 20444 which may lie within the above described tract, and **LESS AND EXCEPT** that portion, if any, of the above described tract that may lie within the State of Mississippi, containing approximately **600 acres**, all as more particularly outlined on a plat on file in the Office of Mineral Resources, Department of Natural Resources. All bearings, distances and coordinates are based on Louisiana Coordinate System of 1927, (North or South Zone), where applicable.

NOTE: The above description of the Tract nominated for lease has been provided and corrected, where required, exclusively by the nomination party. Any mineral lease selected from this Tract and awarded by the Louisiana State Mineral and Energy Board shall be without warranty of any kind, either express, implied, or statutory, including, but not limited

to, the implied warranties of merchantability and fitness for a particular purpose. Should the mineral lease awarded by the Louisiana State Mineral and Energy Board be subsequently modified, cancelled or abrogated due to the existence of conflicting leases, operating agreements, private claims or other future obligations or conditions which may affect all or any portion of the leased Tract, it shall not relieve the Lessee of the obligation to pay any bonus due thereon to the Louisiana State Mineral and Energy Board, nor shall the Louisiana State Mineral and Energy Board be obligated to refund any consideration paid by the Lessor prior to such modification, cancellation, or abrogation, including, but not limited to, bonuses, rentals and royalties.

Applicant: THEOPHILUS OIL, GAS & LAND SERVICES, LLC

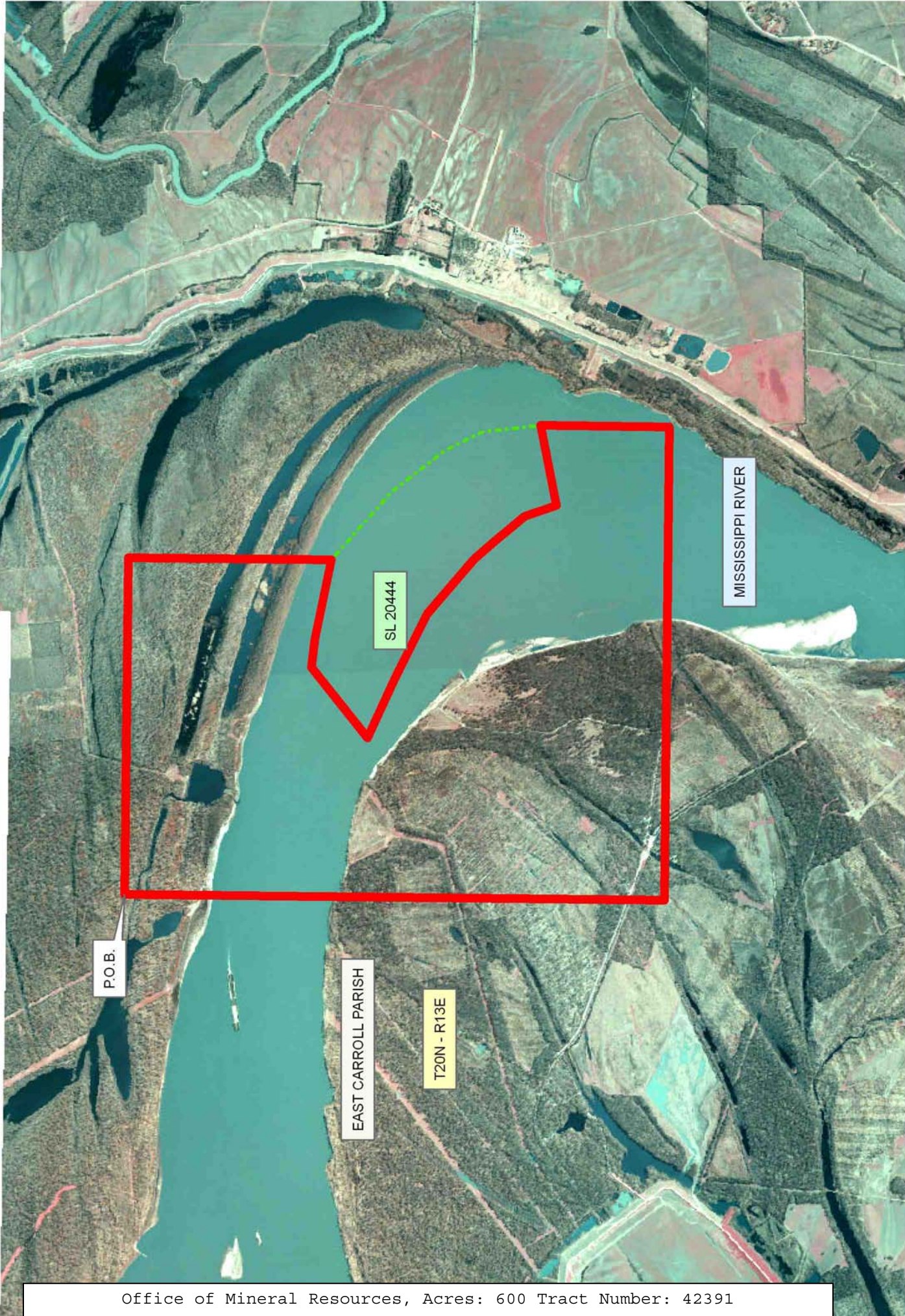
Bidder	Cash Payment	Price/Acre	Rental	Oil	Gas	Other

Legend

11120031

Active_Leases

IMAGERY.DOQQ_2004_1M



TRACT 42392 - East Carroll Parish, Louisiana

All of the lands now or formerly constituting the beds and bottoms of all water bodies of every nature and description as to which title is vested in the State of Louisiana, together with all islands arising therein and other lands formed by accretion or by reliction, where allowed by law, excepting tax adjudicated lands, and not presently under mineral lease on December 14, 2011, situated in East Carroll Parish, Louisiana, and more particularly described as follows: Beginning at a point having Coordinates of X = 2,413,680.00 and Y = 758,950.00; thence East 11,360.00 feet to a point having Coordinates of X = 2,425,040.00 and Y = 758,950.00; thence South 11,450.00 feet to a point having Coordinates of X = 2,425,040.00 and Y = 747,500.00; thence West 14,935.00 feet to a point having Coordinates of X = 2,410,105.00 and Y = 747,500.00; thence North 10,450.00 feet to a point having Coordinates of X = 2,410,105.00 and Y = 757,950.00; thence East 3,575.00 feet to a point having Coordinates of X = 2,413,680.00 and Y = 757,950.00; thence North 1,000.00 feet to the point of beginning, and **LESS AND EXCEPT** that portion, if any, of the above described tract that may lie within the State of Mississippi, containing approximately **820 acres**, all as more particularly outlined on a plat on file in the Office of Mineral Resources, Department of Natural Resources. All bearings, distances and coordinates are based on Louisiana Coordinate System of 1927, (North or South Zone), where applicable.

NOTE: The above description of the Tract nominated for lease has been provided and corrected, where required, exclusively by the nomination party. Any mineral lease selected from this Tract and awarded by the Louisiana State Mineral and Energy Board shall be without warranty of any kind, either express, implied, or statutory, including, but not limited to, the implied warranties of merchantability and fitness for a particular purpose. Should the mineral lease awarded by the Louisiana State Mineral and Energy Board be subsequently modified, cancelled or abrogated due to the existence of conflicting leases, operating agreements, private claims or other future obligations or conditions which may affect all or any portion of the leased Tract, it shall not relieve the Lessee of the obligation to pay any bonus due thereon to the Louisiana State Mineral and Energy Board, nor shall the Louisiana State Mineral and Energy Board be obligated to refund any consideration paid by the Lessor prior to such modification, cancellation, or abrogation, including, but not limited to, bonuses, rentals and royalties.

Applicant: THEOPHILUS OIL, GAS & LAND SERVICES, LLC

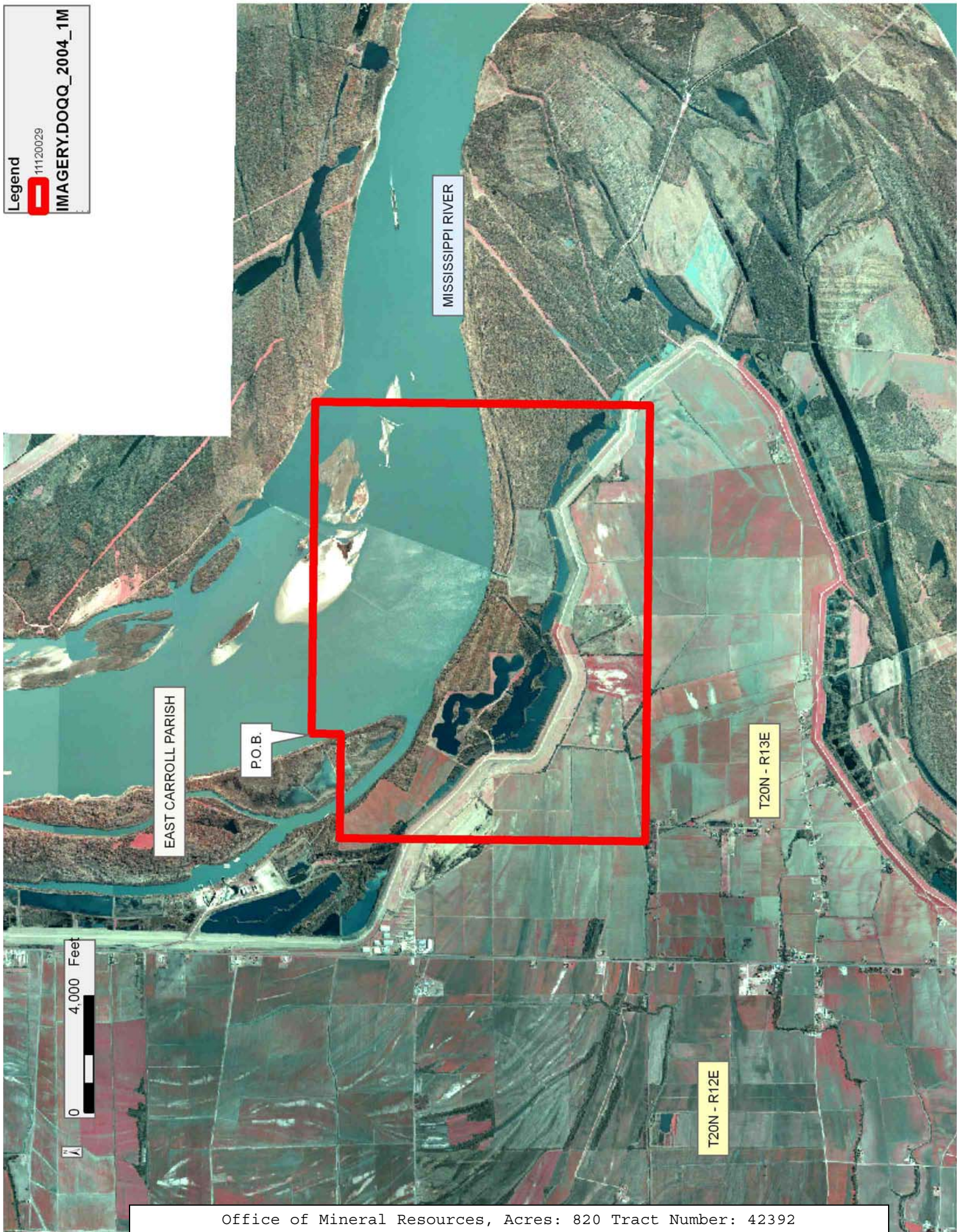
Bidder	Cash Payment	Price/Acre	Rental	Oil	Gas	Other

Legend



11/20029

IMAGERY.DOQQ_2004_1M



EAST CARROLL PARISH

P.O.B.

MISSISSIPPI RIVER

T20N - R12E

T20N - R13E

0 4,000 Feet



TRACT 42393 - East Carroll Parish, Louisiana

All of the lands now or formerly constituting the beds and bottoms of all water bodies of every nature and description as to which title is vested in the State of Louisiana, together with all islands arising therein and other lands formed by accretion or by reliction, where allowed by law, excepting tax adjudicated lands, and not presently under mineral lease on December 14, 2011, situated in East Carroll Parish, Louisiana, and more particularly described as follows: Beginning at a point having Coordinates of X = 2,425,040.00 and Y = 758,950.00; thence East 9,160.00 feet to a point having Coordinates of X = 2,434,200.00 and Y = 758,950.00; thence South 11,450.00 feet to a point having Coordinates of X = 2,434,200.00 and Y = 747,500.00; thence West 9,160.00 feet to a point having Coordinates of X = 2,425,040.00 and Y = 747,500.00; thence North 11,450.00 feet to the point of beginning, and **LESS AND EXCEPT** that portion, if any, of the above described tract that may lie within the State of Mississippi, containing approximately **428 acres**, all as more particularly outlined on a plat on file in the Office of Mineral Resources, Department of Natural Resources. All bearings, distances and coordinates are based on Louisiana Coordinate System of 1927, (North or South Zone), where applicable.

NOTE: The above description of the Tract nominated for lease has been provided and corrected, where required, exclusively by the nomination party. Any mineral lease selected from this Tract and awarded by the Louisiana State Mineral and Energy Board shall be without warranty of any kind, either express, implied, or statutory, including, but not limited to, the implied warranties of merchantability and fitness for a particular purpose. Should the mineral lease awarded by the Louisiana State Mineral and Energy Board be subsequently modified, cancelled or abrogated due to the existence of conflicting leases, operating agreements, private claims or other future obligations or conditions which may affect all or any portion of the leased Tract, it shall not relieve the Lessee of the obligation to pay any bonus due thereon to the Louisiana State Mineral and Energy Board, nor shall the Louisiana State Mineral and Energy Board be obligated to refund any consideration paid by the Lessor prior to such modification, cancellation, or abrogation, including, but not limited to, bonuses, rentals and royalties.

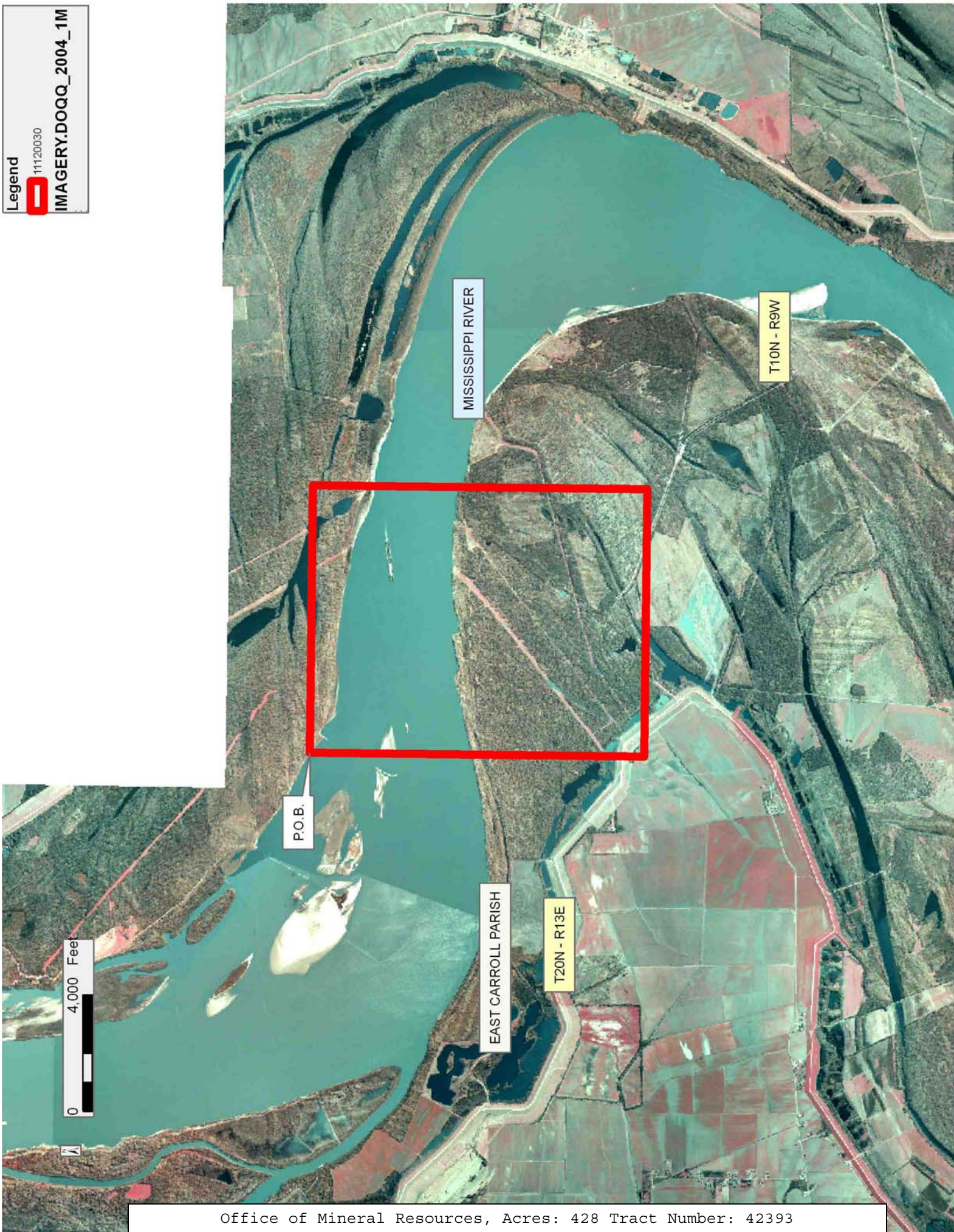
Bidder	Cash Payment	Price/Acre	Rental	Oil	Gas	Other

Applicant: THEOPHILUS OIL, GAS & LAND SERVICES, LLC

Legend

11120030

IMAGERY.DOQQ_2004_1M



TRACT 42394 - East Carroll Parish, Louisiana

All of the lands now or formerly constituting the beds and bottoms of all water bodies of every nature and description as to which title is vested in the State of Louisiana, together with all islands arising therein and other lands formed by accretion or by reliction, where allowed by law, excepting tax adjudicated lands, and not presently under mineral lease on December 14, 2011, situated in East Carroll Parish, Louisiana, and more particularly described as follows: Beginning at a point having Coordinates of X = 2,373,100.00 and Y = 747,300.00; thence East 5,975.00 feet to a point having Coordinates of X = 2,379,075.00 and Y = 747,300.00; thence South 16,810.00 feet to a point having Coordinates of X = 2,379,075.00 and Y = 730,490.00; thence West 11,095.00 feet to a point having Coordinates of X = 2,367,980.00 and Y = 730,490.00; thence North 16,320.00 feet a point having Coordinates of X = 2,367,980.00 and Y = 746,810.00; thence East 5,120.00 feet to a point having Coordinates of X = 2,373,100.00 and Y = 746,810.00; thence North 490.00 feet to the point of beginning, (This tract includes only waterbottoms claimed and owned by the state and specifically excludes any land which the state may claim or own and to which the mineral rights are vested in the state), containing approximately **40 acres**, all as more particularly outlined on a plat on file in the Office of Mineral Resources, Department of Natural Resources. All bearings, distances and coordinates are based on Louisiana Coordinate System of 1927, (North or South Zone), where applicable.

NOTE: The above description of the Tract nominated for lease has been provided and corrected, where required, exclusively by the nomination party. Any mineral lease selected from this Tract and awarded by the Louisiana State Mineral and Energy Board shall be without warranty of any kind, either express, implied, or statutory, including, but not limited to, the implied warranties of merchantability and fitness for a particular purpose. Should the mineral lease awarded by the Louisiana State Mineral and Energy Board be subsequently modified, cancelled or abrogated due to the existence of conflicting leases, operating agreements, private claims or other future obligations or conditions which may affect all or any portion of the leased Tract, it shall not relieve the Lessee of the obligation to pay any bonus due thereon to the Louisiana State Mineral and Energy Board, nor shall the Louisiana State Mineral and Energy Board be obligated to refund any consideration paid by the Lessor prior to such modification, cancellation, or abrogation, including, but not limited to, bonuses, rentals and royalties.

Applicant: THEOPHILUS OIL, GAS & LAND SERVICES, LLC

Bidder	Cash Payment	Price/Acre	Rental	Oil	Gas	Other

Legend

11/12/2013

MA GERY.D0QQ_2004_1M

EAST CARROLL PARISH

T20N - R12E

TENSAS BAYOU

T20N - R11E

P.O.B.

JOE'S BAYOU

3,000 Feet

0

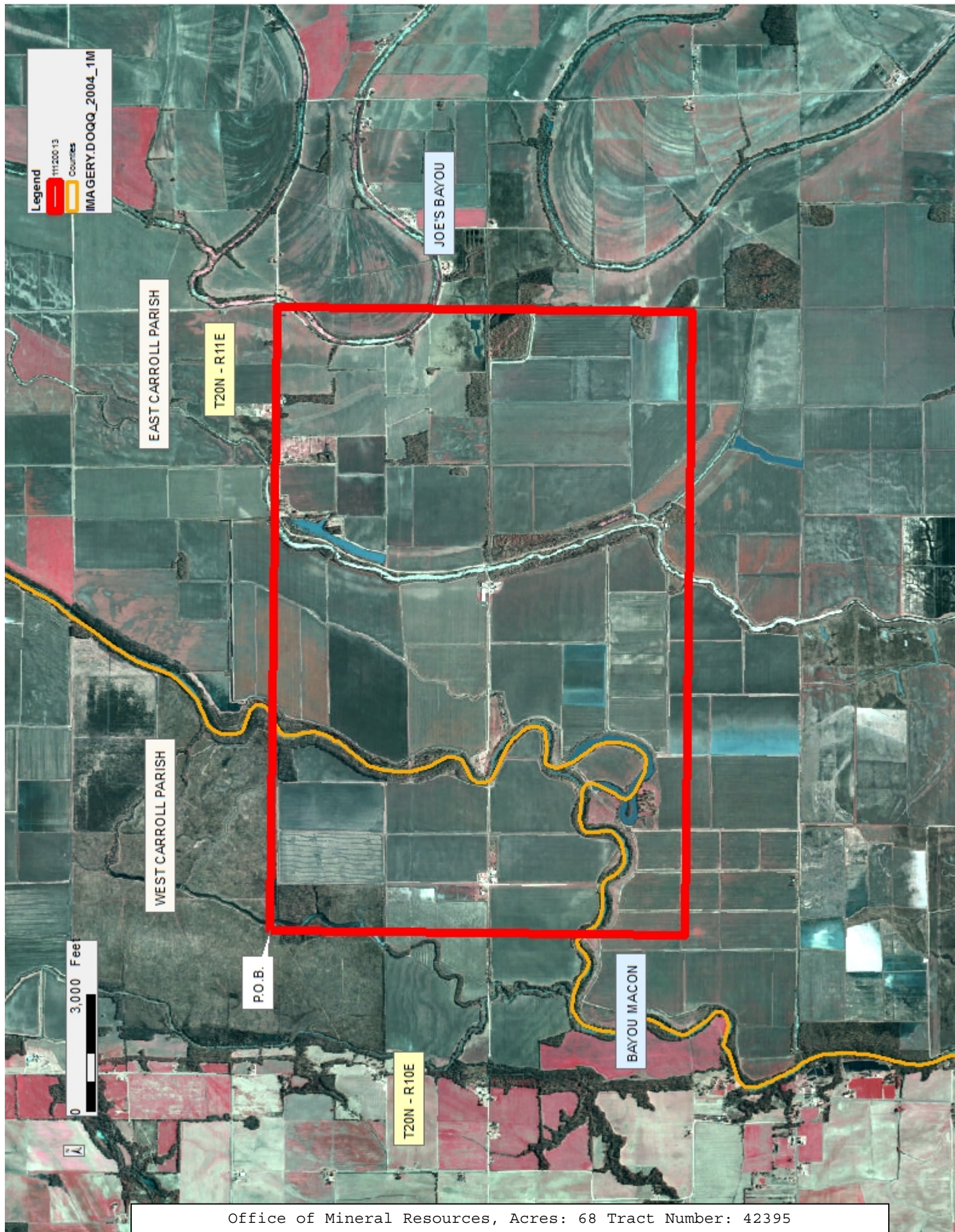
TRACT 42395 - East Carroll and West Carroll Parishes, Louisiana

All of the lands now or formerly constituting the beds and bottoms of all water bodies of every nature and description as to which title is vested in the State of Louisiana, together with all islands arising therein and other lands formed by accretion or by reliction, where allowed by law, excepting tax adjudicated lands, and not presently under mineral lease on December 14, 2011, situated in East Carroll and West Carroll Parishes, Louisiana, and more particularly described as follows: Beginning at a point having Coordinates of X = 2,341,295.00 and Y = 746,810.00; thence East 16,055.00 feet to a point having Coordinates of X = 2,357,350.00 and Y = 746,810.00; thence South 10,685.00 feet to a point having Coordinates of X = 2,357,350.00 and Y = 736,125.00; thence West 16,055.00 feet to a point having Coordinates of X = 2,341,295.00 and Y = 736,125.00; thence North 10,685.00 feet to the point of beginning, containing approximately **68 acres**, all as more particularly outlined on a plat on file in the Office of Mineral Resources, Department of Natural Resources. All bearings, distances and coordinates are based on Louisiana Coordinate System of 1927, (North or South Zone), where applicable.

NOTE: The above description of the Tract nominated for lease has been provided and corrected, where required, exclusively by the nomination party. Any mineral lease selected from this Tract and awarded by the Louisiana State Mineral and Energy Board shall be without warranty of any kind, either express, implied, or statutory, including, but not limited to, the implied warranties of merchantability and fitness for a particular purpose. Should the mineral lease awarded by the Louisiana State Mineral and Energy Board be subsequently modified, cancelled or abrogated due to the existence of conflicting leases, operating agreements, private claims or other future obligations or conditions which may affect all or any portion of the leased Tract, it shall not relieve the Lessee of the obligation to pay any bonus due thereon to the Louisiana State Mineral and Energy Board, nor shall the Louisiana State Mineral and Energy Board be obligated to refund any consideration paid by the Lessor prior to such modification, cancellation, or abrogation, including, but not limited to, bonuses, rentals and royalties.

Applicant: THEOPHILUS OIL, GAS & LAND SERVICES, LLC

Bidder	Cash Payment	Price/Acre	Rental	Oil	Gas	Other



Legend
11120013
Counties
IMAGERY.D0QQ_2004_1M

JOE'S BAYOU

EAST CARROLL PARISH

T20N - R11E

WEST CARROLL PARISH

P.O.B.

T20N - R10E

BAYOU MACON

0 3,000 Feet

TRACT 42396 - East Carroll Parish, Louisiana

All of the lands now or formerly constituting the beds and bottoms of all water bodies of every nature and description as to which title is vested in the State of Louisiana, together with all islands arising therein and other lands formed by accretion or by reliction, where allowed by law, excepting tax adjudicated lands, and not presently under mineral lease on December 14, 2011, situated in East Carroll Parish, Louisiana, and more particularly described as follows: Beginning at a point having Coordinates of X = 2,357,350.00 and Y = 746,810.00; thence East 10,630.00 feet to a point having Coordinates of X = 2,367,980.00 and Y = 746,810.00; thence South 10,685.00 feet to a point having Coordinates of X = 2,367,980.00 and Y = 736,125.00; thence West 10,630.00 feet to a point having Coordinates of X = 2,357,350.00 and Y = 736,125.00; thence North 10,685.00 feet to the point of beginning, containing approximately **58 acres**, all as more particularly outlined on a plat on file in the Office of Mineral Resources, Department of Natural Resources. All bearings, distances and coordinates are based on Louisiana Coordinate System of 1927, (North or South Zone), where applicable.

NOTE: The above description of the Tract nominated for lease has been provided and corrected, where required, exclusively by the nomination party. Any mineral lease selected from this Tract and awarded by the Louisiana State Mineral and Energy Board shall be without warranty of any kind, either express, implied, or statutory, including, but not limited to, the implied warranties of merchantability and fitness for a particular purpose. Should the mineral lease awarded by the Louisiana State Mineral and Energy Board be subsequently modified, cancelled or abrogated due to the existence of conflicting leases, operating agreements, private claims or other future obligations or conditions which may affect all or any portion of the leased Tract, it shall not relieve the Lessee of the obligation to pay any bonus due thereon to the Louisiana State Mineral and Energy Board, nor shall the Louisiana State Mineral and Energy Board be obligated to refund any consideration paid by the Lessor prior to such modification, cancellation, or abrogation, including, but not limited to, bonuses, rentals and royalties.

Applicant: THEOPHILUS OIL, GAS & LAND SERVICES, LLC

Bidder	Cash Payment	Price/Acre	Rental	Oil	Gas	Other

Legend

11120014

IMAGERY.DOQQ_2004_1M

EAST CARROLL PARISH

T20N - R11E

T19N - R11E

JOE'S BAYOU

P.O.B.

0 3,000 Feet

TRACT 42397 - East Carroll and West Carroll Parishes, Louisiana

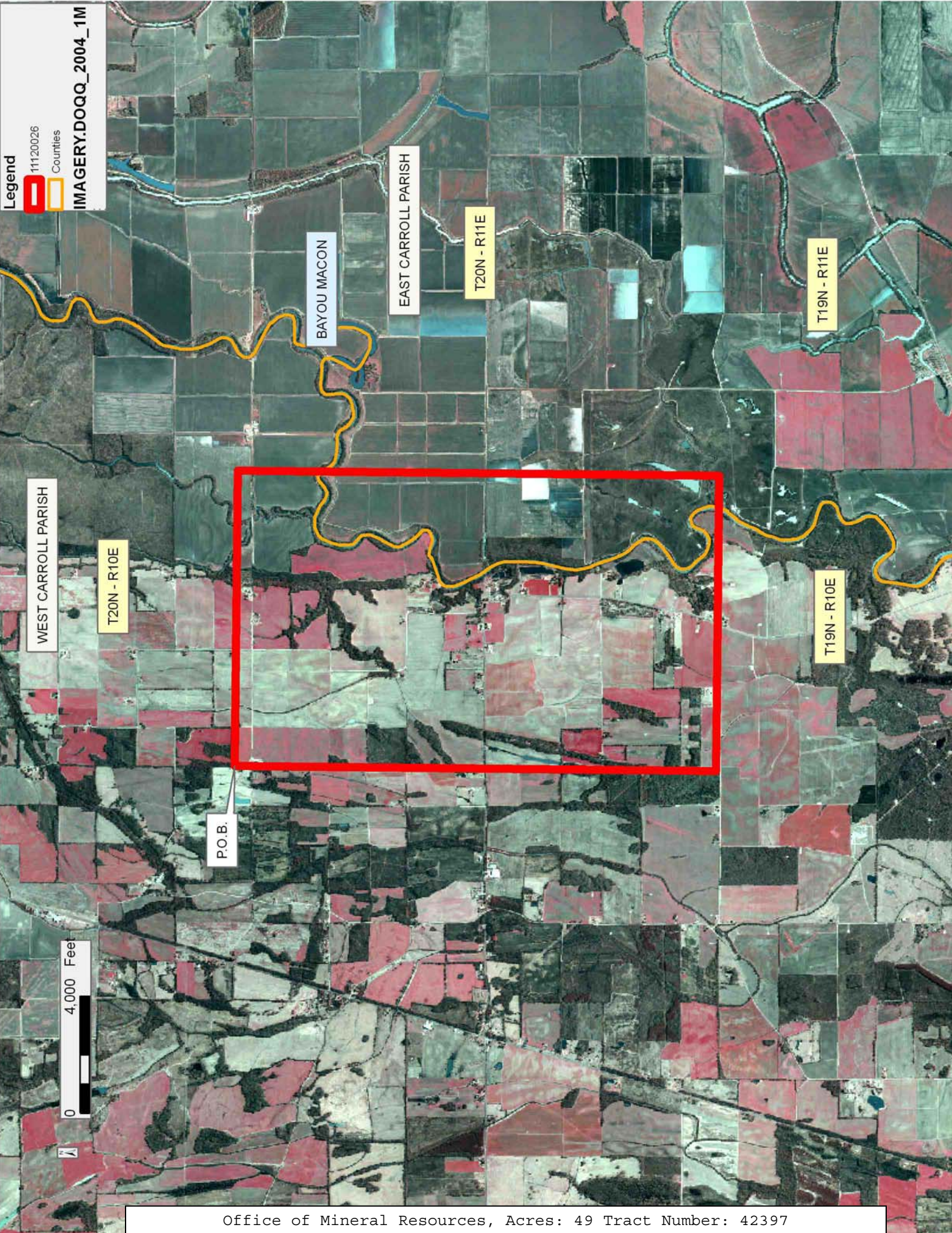
All of the lands now or formerly constituting the beds and bottoms of all water bodies of every nature and description as to which title is vested in the State of Louisiana, together with all islands arising therein and other lands formed by accretion or by reliction, where allowed by law, excepting tax adjudicated lands, and not presently under mineral lease on December 14, 2011, situated in East Carroll and West Carroll Parishes, Louisiana, and more particularly described as follows: Beginning at a point having Coordinates of X = 2,331,210.00 and Y = 741,660.00; thence East 10,085.00 feet to a point having Coordinates of X = 2,341,295.00 and Y = 741,660.00; thence South 16,440.00 feet to a point having Coordinates of X = 2,341,295.00 and Y = 725,220.00; thence West 10,085.00 feet to a point having Coordinates of X = 2,331,210.00 and Y = 725,220.00; thence North 16,440.00 feet to the point of beginning, containing approximately **49 acres**, all as more particularly outlined on a plat on file in the Office of Mineral Resources, Department of Natural Resources. All bearings, distances and coordinates are based on Louisiana Coordinate System of 1927, (North or South Zone), where applicable.

NOTE: The above description of the Tract nominated for lease has been provided and corrected, where required, exclusively by the nomination party. Any mineral lease selected from this Tract and awarded by the Louisiana State Mineral and Energy Board shall be without warranty of any kind, either express, implied, or statutory, including, but not limited to, the implied warranties of merchantability and fitness for a particular purpose. Should the mineral lease awarded by the Louisiana State Mineral and Energy Board be subsequently modified, cancelled or abrogated due to the existence of conflicting leases, operating agreements, private claims or other future obligations or conditions which may affect all or any portion of the leased Tract, it shall not relieve the Lessee of the obligation to pay any bonus due thereon to the Louisiana State Mineral and Energy Board, nor shall the Louisiana State Mineral and Energy Board be obligated to refund any consideration paid by the Lessor prior to such modification, cancellation, or abrogation, including, but not limited to, bonuses, rentals and royalties.

Applicant: THEOPHILUS OIL, GAS & LAND SERVICES, LLC

Bidder	Cash Payment	Price/Acre	Rental	Oil	Gas	Other

Legend
11120026
Counties
IMAGERY.DOQQ_2004_1M



Office of Mineral Resources, Acres: 49 Tract Number: 42397