

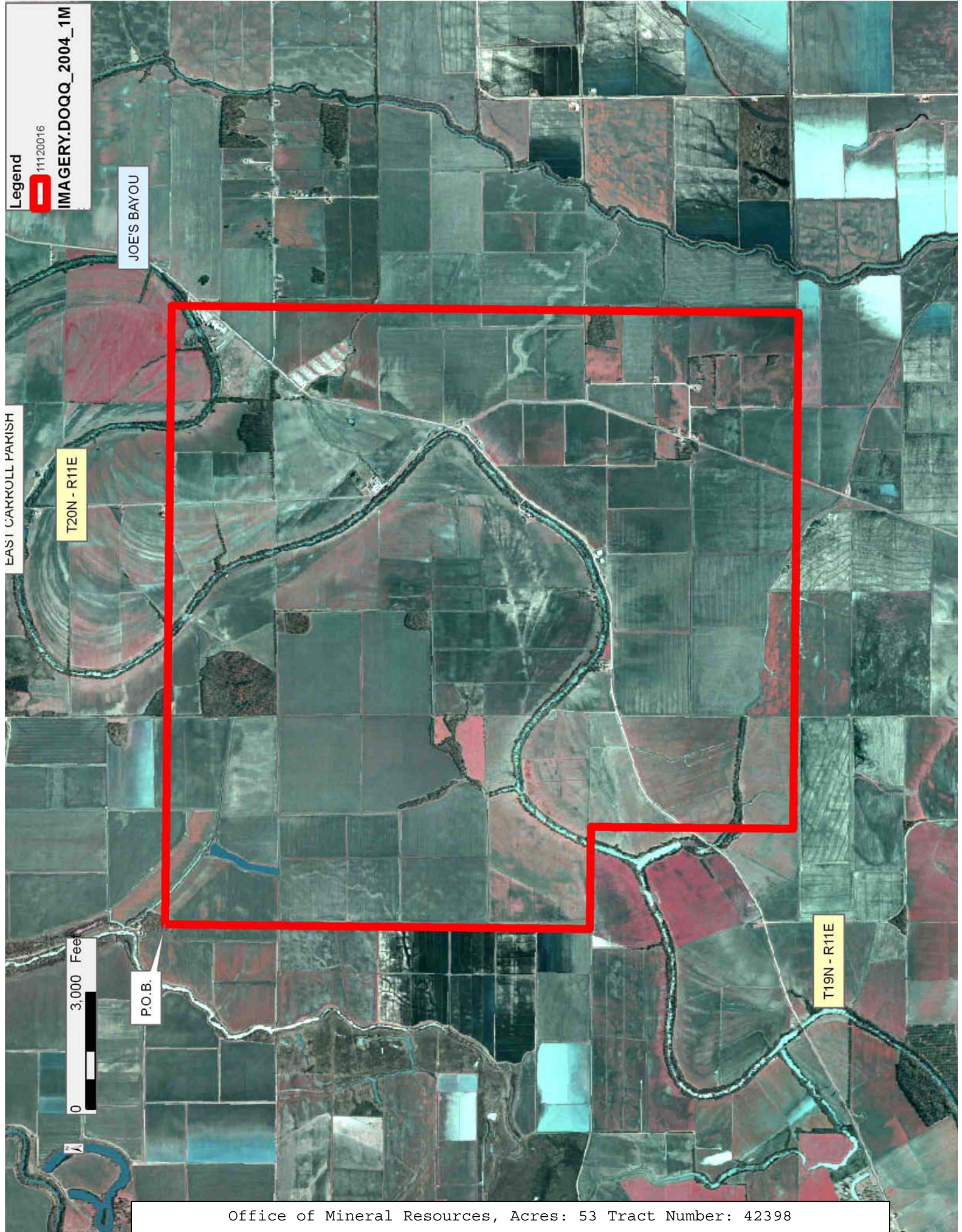
TRACT 42398 - East Carroll Parish, Louisiana

All of the lands now or formerly constituting the beds and bottoms of all water bodies of every nature and description as to which title is vested in the State of Louisiana, together with all islands arising therein and other lands formed by accretion or by reliction, where allowed by law, excepting tax adjudicated lands, and not presently under mineral lease on December 14, 2011, situated in East Carroll Parish, Louisiana, and more particularly described as follows: Beginning at a point having Coordinates of X = 2,352,075.00 and Y = 736,125.00; thence East 15,905.00 feet to a point having Coordinates of X = 2,367,980.00 and Y = 736,125.00; thence South 16,100.00 feet to a point having Coordinates of X = 2,367,980.00 and Y = 720,025.00; thence West 13,275.00 feet to a point having Coordinates of X = 2,354,705.00 and Y = 720,025.00; thence North 5,195.00 feet a point having Coordinates of X = 2,354,705.00 and Y = 725,220.00; thence West 2,630.00 feet to a point having Coordinates of X = 2,352,075.00 and Y = 725,220.00; thence North 10,905.00 feet to the point of beginning, containing approximately **53 acres**, all as more particularly outlined on a plat on file in the Office of Mineral Resources, Department of Natural Resources. All bearings, distances and coordinates are based on Louisiana Coordinate System of 1927, (North or South Zone), where applicable.

NOTE: The above description of the Tract nominated for lease has been provided and corrected, where required, exclusively by the nomination party. Any mineral lease selected from this Tract and awarded by the Louisiana State Mineral and Energy Board shall be without warranty of any kind, either express, implied, or statutory, including, but not limited to, the implied warranties of merchantability and fitness for a particular purpose. Should the mineral lease awarded by the Louisiana State Mineral and Energy Board be subsequently modified, cancelled or abrogated due to the existence of conflicting leases, operating agreements, private claims or other future obligations or conditions which may affect all or any portion of the leased Tract, it shall not relieve the Lessee of the obligation to pay any bonus due thereon to the Louisiana State Mineral and Energy Board, nor shall the Louisiana State Mineral and Energy Board be obligated to refund any consideration paid by the Lessor prior to such modification, cancellation, or abrogation, including, but not limited to, bonuses, rentals and royalties.

Applicant: THEOPHILUS OIL, GAS & LAND SERVICES, LLC

Bidder	Cash Payment	Price/Acre	Rental	Oil	Gas	Other



Legend

11/20016

IMAGERY.DOQQ_2004_1M

EAST CARROLL PARISH

T20N - R11E

JOE'S BAYOU

0 3,000 Feet

P.O.B.

T19N - R11E

TRACT 42399 - East Carroll Parish, Louisiana

All of the lands now or formerly constituting the beds and bottoms of all water bodies of every nature and description as to which title is vested in the State of Louisiana, together with all islands arising therein and other lands formed by accretion or by reliction, where allowed by law, excepting tax adjudicated lands, and not presently under mineral lease on December 14, 2011, situated in East Carroll Parish, Louisiana, and more particularly described as follows: Beginning at a point having Coordinates of X = 2,405,100.00 and Y = 733,355.00; thence East 13,500.00 feet to a point having Coordinates of X = 2,418,600.00 and Y = 733,355.00; thence South 17,530.00 feet to a point having Coordinates of X = 2,418,600.00 and Y = 715,825.00; thence West 13,500.00 feet to a point having Coordinates of X = 2,405,100.00 and Y = 715,825.00; thence North 17,530.00 feet to the point of beginning, and **LESS AND EXCEPT** that portion, if any, of the above described tract that may lie within the State of Mississippi, containing approximately **298 acres**, all as more particularly outlined on a plat on file in the Office of Mineral Resources, Department of Natural Resources. All bearings, distances and coordinates are based on Louisiana Coordinate System of 1927, (North or South Zone), where applicable.

NOTE: The above description of the Tract nominated for lease has been provided and corrected, where required, exclusively by the nomination party. Any mineral lease selected from this Tract and awarded by the Louisiana State Mineral and Energy Board shall be without warranty of any kind, either express, implied, or statutory, including, but not limited to, the implied warranties of merchantability and fitness for a particular purpose. Should the mineral lease awarded by the Louisiana State Mineral and Energy Board be subsequently modified, cancelled or abrogated due to the existence of conflicting leases, operating agreements, private claims or other future obligations or conditions which may affect all or any portion of the leased Tract, it shall not relieve the Lessee of the obligation to pay any bonus due thereon to the Louisiana State Mineral and Energy Board, nor shall the Louisiana State Mineral and Energy Board be obligated to refund any consideration paid by the Lessor prior to such modification, cancellation, or abrogation, including, but not limited to, bonuses, rentals and royalties.

Bidder	Cash Payment	Price/Acre	Rental	Oil	Gas	Other

Applicant: THEOPHILUS OIL, GAS & LAND SERVICES, LLC

Legend

11120027

IMAGERY.DOQQ_2004_1M

EAST CARROLL PARISH

T20N - R13E

MISSISSIPPI RIVER

P.O.B.

T19N - R12E

0 4,000 Feet

TRACT 42400 - East Carroll Parish, Louisiana

All of the lands now or formerly constituting the beds and bottoms of all water bodies of every nature and description as to which title is vested in the State of Louisiana, together with all islands arising therein and other lands formed by accretion or by reliction, where allowed by law, excepting tax adjudicated lands, and not presently under mineral lease on December 14, 2011, situated in East Carroll Parish, Louisiana, and more particularly described as follows: Beginning at a point having Coordinates of X = 2,367,980.00 and Y = 730,490.00; thence East 11,095.00 feet to a point having Coordinates of X = 2,379,075.00 and Y = 730,490.00; thence South 18,480.00 feet to a point having Coordinates of X = 2,379,075.00 and Y = 712,010.00; thence West 16,280.00 feet to a point having Coordinates of X = 2,362,795.00 and Y = 712,010.00; thence North 8,015.00 feet a point having Coordinates of X = 2,362,795.00 and Y = 720,025.00; thence East 5,185.00 feet to a point having Coordinates of X = 2,367,980.00 and Y = 720,025.00; thence North 10,465.00 feet to the point of beginning, containing approximately **24 acres**, all as more particularly outlined on a plat on file in the Office of Mineral Resources, Department of Natural Resources. All bearings, distances and coordinates are based on Louisiana Coordinate System of 1927, (North or South Zone), where applicable.

NOTE: The above description of the Tract nominated for lease has been provided and corrected, where required, exclusively by the nomination party. Any mineral lease selected from this Tract and awarded by the Louisiana State Mineral and Energy Board shall be without warranty of any kind, either express, implied, or statutory, including, but not limited to, the implied warranties of merchantability and fitness for a particular purpose. Should the mineral lease awarded by the Louisiana State Mineral and Energy Board be subsequently modified, cancelled or abrogated due to the existence of conflicting leases, operating agreements, private claims or other future obligations or conditions which may affect all or any portion of the leased Tract, it shall not relieve the Lessee of the obligation to pay any bonus due thereon to the Louisiana State Mineral and Energy Board, nor shall the Louisiana State Mineral and Energy Board be obligated to refund any consideration paid by the Lessor prior to such modification, cancellation, or abrogation, including, but not limited to, bonuses, rentals and royalties.

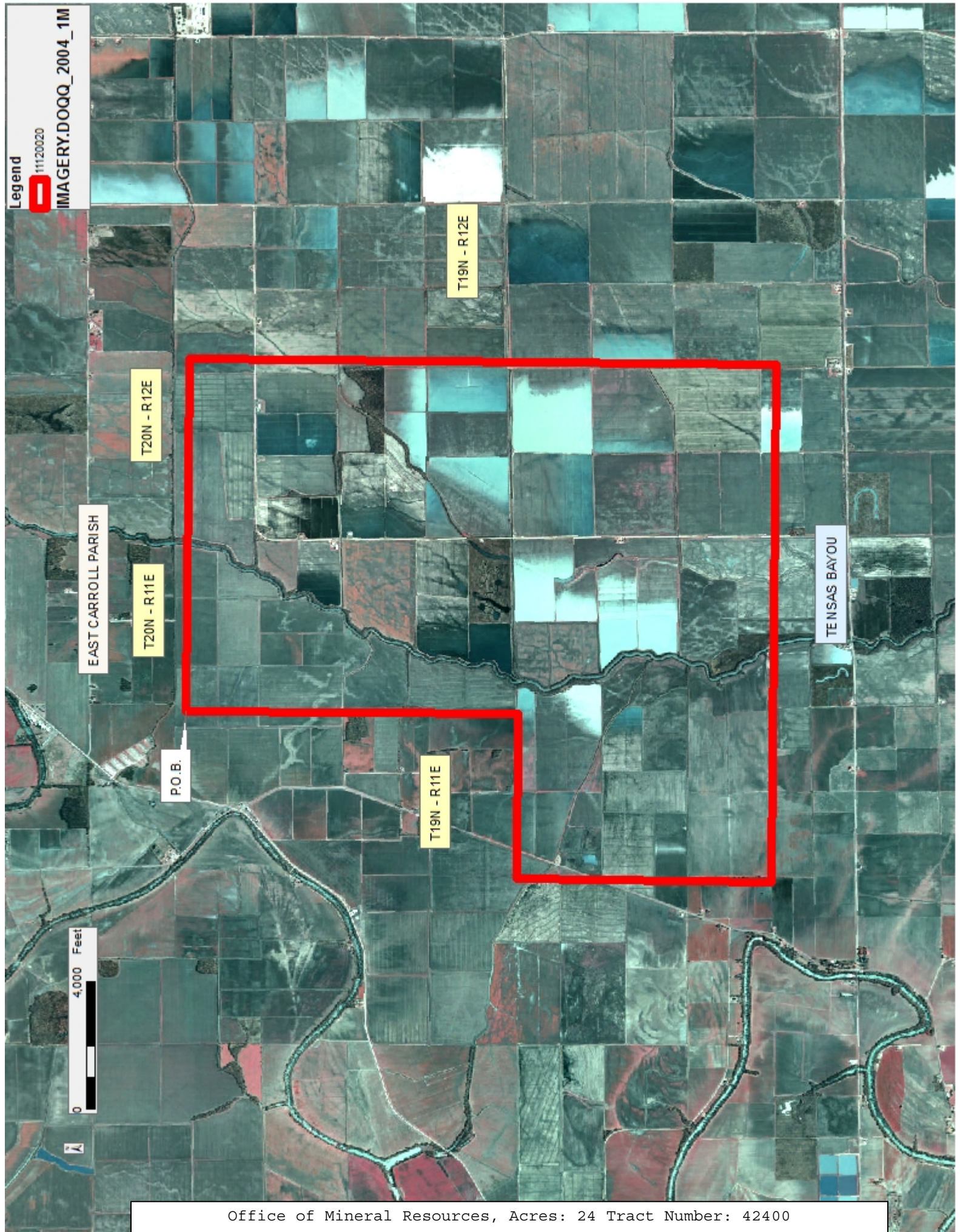
Bidder	Cash Payment	Price/Acre	Rental	Oil	Gas	Other

Applicant: THEOPHILUS OIL, GAS & LAND SERVICES, LLC

Legend

11120020

IMAGERY.DOQQ_2004_1M



TRACT 42401 - East Carroll Parish, Louisiana

All of the lands now or formerly constituting the beds and bottoms of all water bodies of every nature and description as to which title is vested in the State of Louisiana, together with all islands arising therein and other lands formed by accretion or by reliction, where allowed by law, excepting tax adjudicated lands, and not presently under mineral lease on December 14, 2011, situated in East Carroll Parish, Louisiana, and more particularly described as follows: Beginning at a point having Coordinates of X = 2,341,295.00 and Y = 725,220.00; thence East 13,410.00 feet to a point having Coordinates of X = 2,354,705.00 and Y = 725,220.00; thence South 16,165.00 feet to a point having Coordinates of X = 2,354,705.00 and Y = 709,055.00; thence West 13,410.00 feet to a point having Coordinates of X = 2,341,295.00 and Y = 709,055.00; thence North 16,165.00 feet to the point of beginning, containing approximately **80 acres**, all as more particularly outlined on a plat on file in the Office of Mineral Resources, Department of Natural Resources. All bearings, distances and coordinates are based on Louisiana Coordinate System of 1927, (North or South Zone), where applicable.

NOTE: The above description of the Tract nominated for lease has been provided and corrected, where required, exclusively by the nomination party. Any mineral lease selected from this Tract and awarded by the Louisiana State Mineral and Energy Board shall be without warranty of any kind, either express, implied, or statutory, including, but not limited to, the implied warranties of merchantability and fitness for a particular purpose. Should the mineral lease awarded by the Louisiana State Mineral and Energy Board be subsequently modified, cancelled or abrogated due to the existence of conflicting leases, operating agreements, private claims or other future obligations or conditions which may affect all or any portion of the leased Tract, it shall not relieve the Lessee of the obligation to pay any bonus due thereon to the Louisiana State Mineral and Energy Board, nor shall the Louisiana State Mineral and Energy Board be obligated to refund any consideration paid by the Lessor prior to such modification, cancellation, or abrogation, including, but not limited to, bonuses, rentals and royalties.

Applicant: THEOPHILUS OIL, GAS & LAND SERVICES, LLC

Bidder	Cash Payment	Price/Acre	Rental	Oil	Gas	Other

Legend
11/13/2018
IMAGERY.DOQQ_2004_1M

EAST CARROLL PARISH

T19N - R11E

CARAWAY LAKE

JOE'S BAYOU

P.O.B.

0 3,200 Feet

T19N - R10E

TRACT 42402 - East Carroll and West Carroll Parishes, Louisiana

All of the lands now or formerly constituting the beds and bottoms of all water bodies of every nature and description as to which title is vested in the State of Louisiana, together with all islands arising therein and other lands formed by accretion or by reliction, where allowed by law, excepting tax adjudicated lands, and not presently under mineral lease on December 14, 2011, situated in East Carroll and West Carroll Parishes, Louisiana, and more particularly described as follows: Beginning at a point having Coordinates of X = 2,331,210.00 and Y = 725,220.00; thence East 10,085.00 feet to a point having Coordinates of X = 2,341,295.00 and Y = 725,220.00; thence South 16,165.00 feet to a point having Coordinates of X = 2,341,295.00 and Y = 709,055.00; thence West 10,085.00 feet to a point having Coordinates of X = 2,331,210.00 and Y = 709,055.00; thence North 16,165.00 feet to the point of beginning, (This tract includes only waterbottoms claimed and owned by the state and specifically excludes any land which the state may claim or own and to which the mineral rights are vested in the state), containing approximately **62 acres**, all as more particularly outlined on a plat on file in the Office of Mineral Resources, Department of Natural Resources. All bearings, distances and coordinates are based on Louisiana Coordinate System of 1927, (North or South Zone), where applicable.

NOTE: The above description of the Tract nominated for lease has been provided and corrected, where required, exclusively by the nomination party. Any mineral lease selected from this Tract and awarded by the Louisiana State Mineral and Energy Board shall be without warranty of any kind, either express, implied, or statutory, including, but not limited to, the implied warranties of merchantability and fitness for a particular purpose. Should the mineral lease awarded by the Louisiana State Mineral and Energy Board be subsequently modified, cancelled or abrogated due to the existence of conflicting leases, operating agreements, private claims or other future obligations or conditions which may affect all or any portion of the leased Tract, it shall not relieve the Lessee of the obligation to pay any bonus due thereon to the Louisiana State Mineral and Energy Board, nor shall the Louisiana State Mineral and Energy Board be obligated to refund any consideration paid by the Lessor prior to such modification, cancellation, or abrogation, including, but not limited to, bonuses, rentals and royalties.

Applicant: THEOPHILUS OIL, GAS & LAND SERVICES, LLC

Bidder	Cash Payment	Price/Acre	Rental	Oil	Gas	Other

Legend
11120017
Counties

IMAGERY.DOQQ_2004_1M

EAST CARROLL PARISH

T19N - R11E

WEST CARROLL PARISH

T19N - R10E

BAYOU MACON

P.O.B.

3,200 Feet



TRACT 42403 - East Carroll Parish, Louisiana

All of the lands now or formerly constituting the beds and bottoms of all water bodies of every nature and description as to which title is vested in the State of Louisiana, together with all islands arising therein and other lands formed by accretion or by reliction, where allowed by law, excepting tax adjudicated lands, and not presently under mineral lease on December 14, 2011, situated in East Carroll Parish, Louisiana, and more particularly described as follows: Beginning at a point having Coordinates of X = 2,354,705.00 and Y = 720,025.00; thence East 8,090.00 feet to a point having Coordinates of X = 2,362,795.00 and Y = 720,025.00; thence South 16,175.00 feet to a point having Coordinates of X = 2,362,795.00 and Y = 703,850.00; thence West 8,090.00 feet to a point having Coordinates of X = 2,354,705.00 and Y = 703,850.00; thence North 16,175.00 feet to the point of beginning, containing approximately **47 acres**, all as more particularly outlined on a plat on file in the Office of Mineral Resources, Department of Natural Resources. All bearings, distances and coordinates are based on Louisiana Coordinate System of 1927, (North or South Zone), where applicable.

NOTE: The above description of the Tract nominated for lease has been provided and corrected, where required, exclusively by the nomination party. Any mineral lease selected from this Tract and awarded by the Louisiana State Mineral and Energy Board shall be without warranty of any kind, either express, implied, or statutory, including, but not limited to, the implied warranties of merchantability and fitness for a particular purpose. Should the mineral lease awarded by the Louisiana State Mineral and Energy Board be subsequently modified, cancelled or abrogated due to the existence of conflicting leases, operating agreements, private claims or other future obligations or conditions which may affect all or any portion of the leased Tract, it shall not relieve the Lessee of the obligation to pay any bonus due thereon to the Louisiana State Mineral and Energy Board, nor shall the Louisiana State Mineral and Energy Board be obligated to refund any consideration paid by the Lessor prior to such modification, cancellation, or abrogation, including, but not limited to, bonuses, rentals and royalties.

Applicant: THEOPHILUS OIL, GAS & LAND SERVICES, LLC

Bidder	Cash Payment	Price/Acre	Rental	Oil	Gas	Other

Legend

11/2019

MA GERY.D0QQ_2004_1M

EAST CARROLL PARISH

T19N - R11E

P.O.B.

JOE'S BAYOU

0 3,000 Feet

TRACT 42404 - East Carroll Parish, Louisiana

All of the lands now or formerly constituting the beds and bottoms of all water bodies of every nature and description as to which title is vested in the State of Louisiana, together with all islands arising therein and other lands formed by accretion or by reliction, where allowed by law, excepting tax adjudicated lands, and not presently under mineral lease on December 14, 2011, situated in East Carroll Parish, Louisiana, and more particularly described as follows: Beginning at a point having Coordinates of X = 2,362,795.00 and Y = 712,010.00; thence East 16,280.00 feet to a point having Coordinates of X = 2,379,075.00 and Y = 712,010.00; thence South 18,480.00 feet to a point having Coordinates of X = 2,379,075.00 and Y = 693,530.00; thence West 16,280.00 feet to a point having Coordinates of X = 2,362,795.00 and Y = 693,530.00; thence North 18,480.00 feet to the point of beginning, containing approximately **32 acres**, all as more particularly outlined on a plat on file in the Office of Mineral Resources, Department of Natural Resources. All bearings, distances and coordinates are based on Louisiana Coordinate System of 1927, (North or South Zone), where applicable.

NOTE: The above description of the Tract nominated for lease has been provided and corrected, where required, exclusively by the nomination party. Any mineral lease selected from this Tract and awarded by the Louisiana State Mineral and Energy Board shall be without warranty of any kind, either express, implied, or statutory, including, but not limited to, the implied warranties of merchantability and fitness for a particular purpose. Should the mineral lease awarded by the Louisiana State Mineral and Energy Board be subsequently modified, cancelled or abrogated due to the existence of conflicting leases, operating agreements, private claims or other future obligations or conditions which may affect all or any portion of the leased Tract, it shall not relieve the Lessee of the obligation to pay any bonus due thereon to the Louisiana State Mineral and Energy Board, nor shall the Louisiana State Mineral and Energy Board be obligated to refund any consideration paid by the Lessor prior to such modification, cancellation, or abrogation, including, but not limited to, bonuses, rentals and royalties.

Applicant: THEOPHILUS OIL, GAS & LAND SERVICES, LLC

Bidder	Cash Payment	Price/Acre	Rental	Oil	Gas	Other

Legend
11/2023
MA GERY.D0QQ_2004_1M

EAST CARROLL PARISH

T19N - R12E

T18N - R12E

T19N - R11E

GRAVEYARD BAYOU

T18N - R11E

TENSAS BAYOU

P.O.B.

0 4,000 Feet

TRACT 42405 - East Carroll and West Carroll Parishes, Louisiana

All of the lands now or formerly constituting the beds and bottoms of all water bodies of every nature and description as to which title is vested in the State of Louisiana, together with all islands arising therein and other lands formed by accretion or by reliction, where allowed by law, excepting tax adjudicated lands, and not presently under mineral lease on December 14, 2011, situated in East Carroll and West Carroll Parishes, Louisiana, and more particularly described as follows: Beginning at a point having Coordinates of X = 2,336,510.00 and Y = 709,055.00; thence East 18,195.00 feet to a point having Coordinates of X = 2,354,705.00 and Y = 709,055.00; thence South 16,445.00 feet to a point having Coordinates of X = 2,354,705.00 and Y = 692,610.00; thence West 18,195.00 feet to a point having Coordinates of X = 2,336,510.00 and Y = 692,610.00; thence North 16,445.00 feet to the point of beginning, containing approximately **109 acres**, all as more particularly outlined on a plat on file in the Office of Mineral Resources, Department of Natural Resources. All bearings, distances and coordinates are based on Louisiana Coordinate System of 1927, (North or South Zone), where applicable.

NOTE: The above description of the Tract nominated for lease has been provided and corrected, where required, exclusively by the nomination party. Any mineral lease selected from this Tract and awarded by the Louisiana State Mineral and Energy Board shall be without warranty of any kind, either express, implied, or statutory, including, but not limited to, the implied warranties of merchantability and fitness for a particular purpose. Should the mineral lease awarded by the Louisiana State Mineral and Energy Board be subsequently modified, cancelled or abrogated due to the existence of conflicting leases, operating agreements, private claims or other future obligations or conditions which may affect all or any portion of the leased Tract, it shall not relieve the Lessee of the obligation to pay any bonus due thereon to the Louisiana State Mineral and Energy Board, nor shall the Louisiana State Mineral and Energy Board be obligated to refund any consideration paid by the Lessor prior to such modification, cancellation, or abrogation, including, but not limited to, bonuses, rentals and royalties.

Applicant: THEOPHILUS OIL, GAS & LAND SERVICES, LLC

Bidder	Cash Payment	Price/Acre	Rental	Oil	Gas	Other

Legend
11/20/2022
Counties
IMAGERY.DOQQ_2004_1M

EAST CARROLL PARISH

T19N - R11E

JOE'S BAYOU



T18N - R10E

0 4,000 Feet

P.O.B.

WEST CARROLL PARISH

BAYOU MACON

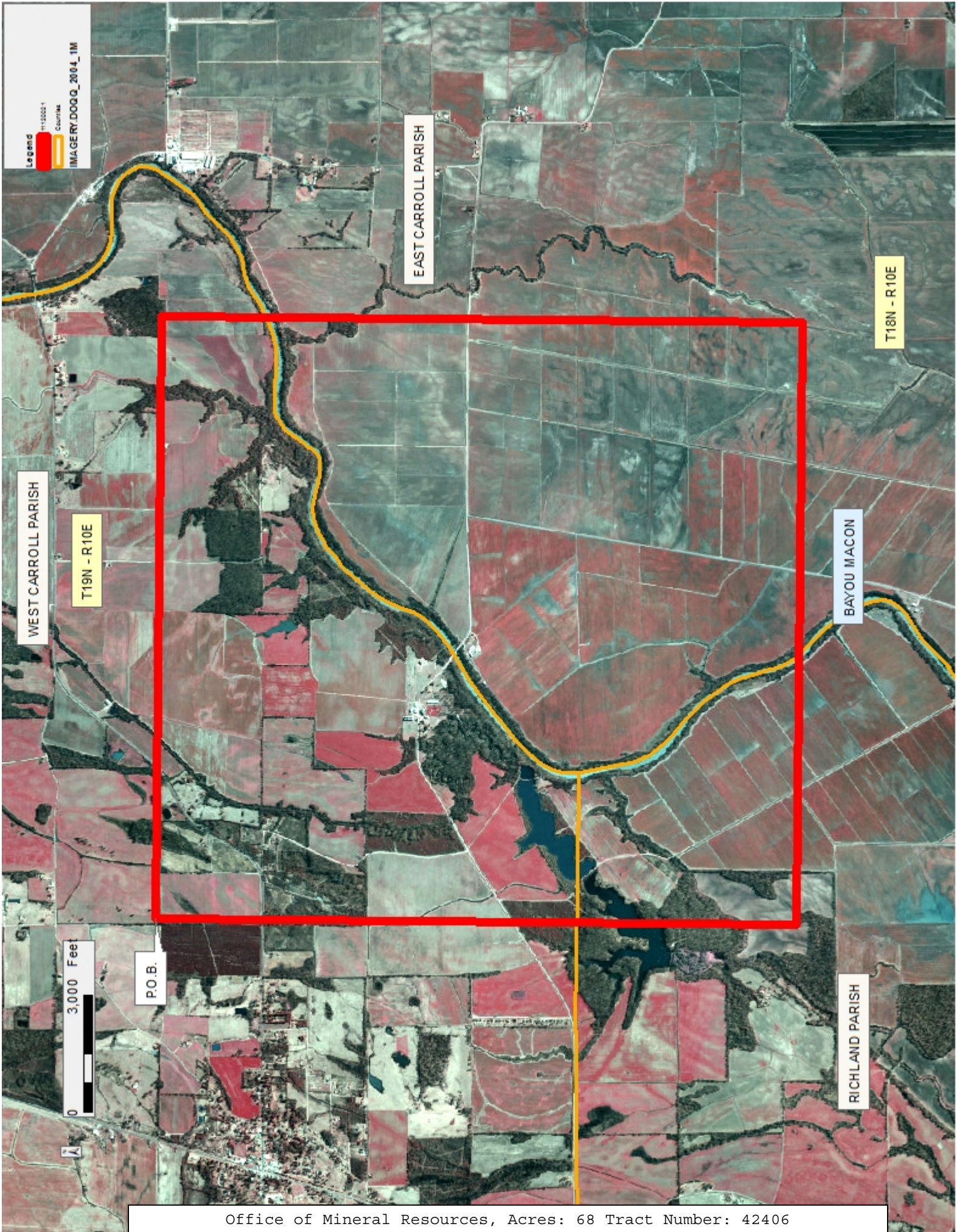
TRACT 42406 - East Carroll Richland and West Carroll Parishes, Louisiana

All of the lands now or formerly constituting the beds and bottoms of all water bodies of every nature and description as to which title is vested in the State of Louisiana, together with all islands arising therein and other lands formed by accretion or by reliction, where allowed by law, excepting tax adjudicated lands, and not presently under mineral lease on December 14, 2011, situated in East Carroll Richland and West Carroll Parishes, Louisiana, and more particularly described as follows: Beginning at a point having Coordinates of X = 2,321,065.00 and Y = 709,055.00; thence East 15,445.00 feet to a point having Coordinates of X = 2,336,510.00 and Y = 709,055.00; thence South 16,445.00 feet to a point having Coordinates of X = 2,336,510.00 and Y = 692,610.00; thence West 15,445.00 feet to a point having Coordinates of X = 2,321,065.00 and Y = 692,610.00; thence North 16,445.00 feet to the point of beginning, containing approximately **68 acres**, all as more particularly outlined on a plat on file in the Office of Mineral Resources, Department of Natural Resources. All bearings, distances and coordinates are based on Louisiana Coordinate System of 1927, (North or South Zone), where applicable.

NOTE: The above description of the Tract nominated for lease has been provided and corrected, where required, exclusively by the nomination party. Any mineral lease selected from this Tract and awarded by the Louisiana State Mineral and Energy Board shall be without warranty of any kind, either express, implied, or statutory, including, but not limited to, the implied warranties of merchantability and fitness for a particular purpose. Should the mineral lease awarded by the Louisiana State Mineral and Energy Board be subsequently modified, cancelled or abrogated due to the existence of conflicting leases, operating agreements, private claims or other future obligations or conditions which may affect all or any portion of the leased Tract, it shall not relieve the Lessee of the obligation to pay any bonus due thereon to the Louisiana State Mineral and Energy Board, nor shall the Louisiana State Mineral and Energy Board be obligated to refund any consideration paid by the Lessor prior to such modification, cancellation, or abrogation, including, but not limited to, bonuses, rentals and royalties.

Bidder	Cash Payment	Price/Acre	Rental	Oil	Gas	Other

Applicant: THEOPHILUS OIL, GAS & LAND SERVICES, LLC



TRACT 42407 - Caddo and De Soto Parishes, Louisiana

All of the lands now or formerly constituting the beds and bottoms of all water bodies of every nature and description as to which title is vested in the State of Louisiana, together with all islands arising therein and other lands formed by accretion or by reliction, where allowed by law, excepting tax adjudicated lands, and not presently under mineral lease on December 14, 2011, situated in Caddo and De Soto Parishes, Louisiana, and more particularly described as follows: Beginning at the Southeast corner of State Lease No. 20356, said corner also being a point on the West boundary of State Lease No. 19929 having Coordinates of X = 1,625,082.70 and Y = 605,297.50; thence South 89 degrees 03 minutes 51 seconds East 10.24 feet to a point having Coordinates of X = 1,625,092.94 and Y = 605,297.33; thence South 00 degrees 40 minutes 19 seconds West 3,422.41 feet to a point having Coordinates of X = 1,625,052.81 and Y = 601,875.16; thence South 09 degrees 26 minutes 42 seconds East 1,755.61 feet to a point on the North line of State Lease No. 18371, as amended, having Coordinates of X = 1,625,340.90 and Y = 600,143.36; thence along the boundary of said State Lease No. 18371, as amended, the following courses: North 89 degrees 16 minutes 30 seconds West 5,173.62 feet to a point having Coordinates of X = 1,620,167.70 and Y = 600,208.82 and North 00 degrees 41 minutes 36 seconds East 5,168.35 feet to a point on the South boundary of said State Lease No. 20356 having Coordinates of X = 1,620,230.24 and Y = 605,376.79; thence South 89 degrees 03 minutes 50 seconds East 4,853.11 feet along the South boundary of said State Lease No. 20356 to the point of beginning, containing approximately **382 acres**, all as more particularly outlined on a plat on file in the Office of Mineral Resources, Department of Natural Resources. All bearings, distances and coordinates are based on Louisiana Coordinate System of 1927, (North or South Zone), where applicable.

NOTE: The above description of the Tract nominated for lease has been provided and corrected, where required, exclusively by the nomination party. Any mineral lease selected from this Tract and awarded by the Louisiana State Mineral and Energy Board shall be without warranty of any kind, either express, implied, or statutory, including, but not limited to, the implied warranties of merchantability and fitness for a particular purpose. Should the mineral lease awarded by the Louisiana State Mineral and Energy Board be subsequently modified, cancelled or abrogated due to the existence of conflicting leases, operating agreements, private claims or other future obligations or conditions which may affect all or any portion of the leased Tract, it shall not relieve the Lessee of the obligation to pay any bonus due thereon to the Louisiana State Mineral and Energy Board, nor shall the Louisiana State Mineral and Energy Board be obligated to refund any consideration paid by the Lessor prior to such modification, cancellation, or abrogation, including, but not limited to, bonuses, rentals and royalties.

Applicant: PALMER & PALMER

Bidder	Cash Payment	Price/Acre	Rental	Oil	Gas	Other

Legend

11120008

Active_Leases

Counties

IMAGERY.DOQQ_2004_1M

0 2,000 Feet

CADDO PARISH

SL 20356

T16N - R13W

P.O.B.

SL 19929

WALLACE BAYOU

WALLACE LAKE

DE SOTO PARISH

T15N - R13W

SL 18371