

TRACT 42408 - Caddo and De Soto Parishes, Louisiana

All of the lands now or formerly constituting the beds and bottoms of all water bodies of every nature and description as to which title is vested in the State of Louisiana, together with all islands arising therein and other lands formed by accretion or by reliction, where allowed by law, excepting tax adjudicated lands, and not presently under mineral lease on December 14, 2011, situated in Caddo and De Soto Parishes, Louisiana, and more particularly described as follows: Beginning at the Northeast corner of State Lease No. 18371, as amended, said corner also being point on the West boundary of State Lease No. 19929 having Coordinates of X = 1,625,495.51 and Y = 600,141.40; thence North 89 degrees 16 minutes 30 seconds West 154.62 feet along the North boundary of said State Lease No. 18371, as amended, to a point having Coordinates of X = 1,625,340.90 and Y = 600,143.36; thence North 09 degrees 26 minutes 42 seconds West 1,755.61 feet to a point having Coordinates of X = 1,625,052.81 and Y = 601,875.16; thence North 00 degrees 40 minutes 19 seconds East 3,422.41 feet to a point on the West boundary of said State Lease No. 19929, as amended, having Coordinates of X = 1,625,092.94 and Y = 605,297.33; thence along the boundary of said State Lease No. 19929 the following courses: South 89 degrees 03 minutes 51 seconds East 521.88 feet to a point having Coordinates of X = 1,625,614.75 and Y = 605,288.81 and South 01 degrees 19 minutes 37 seconds West 5,148.79 feet to the point of beginning, containing approximately **10 acres**, all as more particularly outlined on a plat on file in the Office of Mineral Resources, Department of Natural Resources. All bearings, distances and coordinates are based on Louisiana Coordinate System of 1927, (North or South Zone), where applicable.

NOTE: The above description of the Tract nominated for lease has been provided and corrected, where required, exclusively by the nomination party. Any mineral lease selected from this Tract and awarded by the Louisiana State Mineral and Energy Board shall be without warranty of any kind, either express, implied, or statutory, including, but not limited to, the implied warranties of merchantability and fitness for a particular purpose. Should the mineral lease awarded by the Louisiana State Mineral and Energy Board be subsequently modified, cancelled or abrogated due to the existence of conflicting leases, operating agreements, private claims or other future obligations or conditions which may affect all or any portion of the leased Tract, it shall not relieve the Lessee of the obligation to pay any bonus due thereon to the Louisiana State Mineral and Energy Board, nor shall the Louisiana State Mineral and Energy Board be obligated to refund any consideration paid by the Lessor prior to such modification, cancellation, or abrogation, including, but not limited to, bonuses, rentals and royalties.

Applicant: PALMER & PALMER

Bidder	Cash Payment	Price/Acre	Rental	Oil	Gas	Other

Legend

11120007

Active_Leases

Counties

IMAGERY.DOQQ_2004_1M

2,000 Feet

0

CADDO PARISH

T16N - R13W

DE SOTO PARISH

WALLACE BAYOU

WALLACE LAKE

P.O.B.

SL 20356

SL 18371

T15N - R13W

TRACT 42409 - De Soto and Red River Parishes, Louisiana

All of the lands now or formerly constituting the beds and bottoms of all water bodies of every nature and description as to which title is vested in the State of Louisiana, together with all islands arising therein and other lands formed by accretion or by reliction, where allowed by law, excepting tax adjudicated lands, and not presently under mineral lease on December 14, 2011, situated in De Soto and Red River Parishes, Louisiana, and more particularly described as follows: Beginning at a point on the South boundary of State Lease No. 17128, as amended, having Coordinates of X = 1,692,315.00 and Y = 504,087.00; thence East 5,885.00 feet along the South boundary of said State Lease No. 17128 to its Southeast corner, also being the Southwest corner of State Lease No. 17366, as amended, having Coordinates of X = 1,698,200.00 and Y = 504,087.00; thence South 00 degrees 00 minutes 40 seconds East 5,173.00 feet to the Northeast corner of State Lease No. 20516 having Coordinates of X = 1,698,201.00 and Y = 498,914.00; thence West 5,886.00 feet along the North boundary of said State Lease No. 20516 to its Northwest corner having Coordinates of X = 1,692,315.00 and Y = 498,914.00; thence North 5,173.00 feet to the point of beginning, containing approximately **10 acres**, all as more particularly outlined on a plat on file in the Office of Mineral Resources, Department of Natural Resources. All bearings, distances and coordinates are based on Louisiana Coordinate System of 1927, (North or South Zone), where applicable.

NOTE: The above description of the Tract nominated for lease has been provided and corrected, where required, exclusively by the nomination party. Any mineral lease selected from this Tract and awarded by the Louisiana State Mineral and Energy Board shall be without warranty of any kind, either express, implied, or statutory, including, but not limited to, the implied warranties of merchantability and fitness for a particular purpose. Should the mineral lease awarded by the Louisiana State Mineral and Energy Board be subsequently modified, cancelled or abrogated due to the existence of conflicting leases, operating agreements, private claims or other future obligations or conditions which may affect all or any portion of the leased Tract, it shall not relieve the Lessee of the obligation to pay any bonus due thereon to the Louisiana State Mineral and Energy Board, nor shall the Louisiana State Mineral and Energy Board be obligated to refund any consideration paid by the Lessor prior to such modification, cancellation, or abrogation, including, but not limited to, bonuses, rentals and royalties.

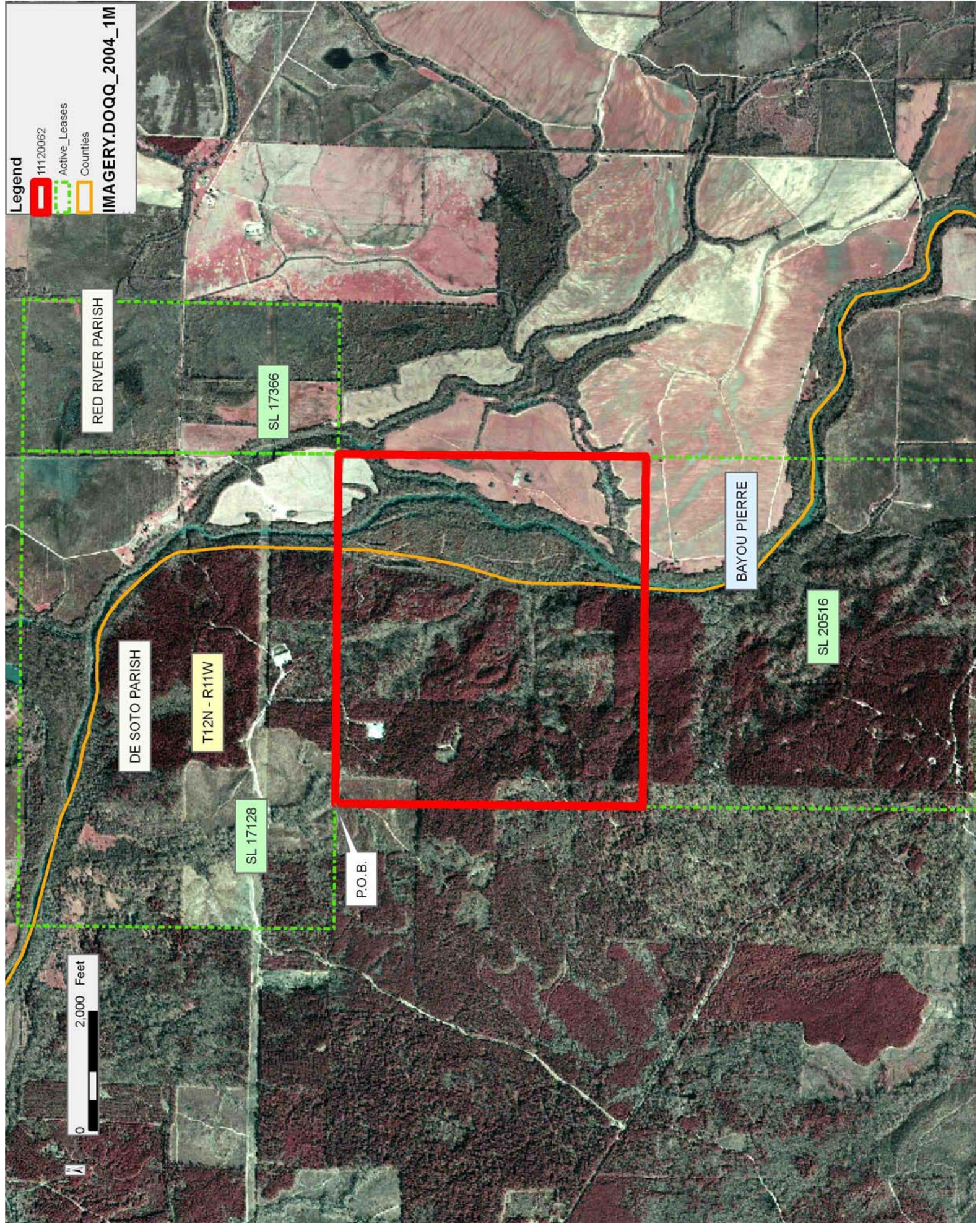
Applicant: MERGANSER EXPLORATION

Bidder	Cash Payment	Price/Acre	Rental	Oil	Gas	Other

Legend

- 11120062
- Active_Leases
- Counties

IMAGERY.DOQQ_2004_1M



TRACT 42410 - Tensas Parish, Louisiana

All of the lands now or formerly constituting the beds and bottoms of all water bodies of every nature and description as to which title is vested in the State of Louisiana, together with all islands arising therein and other lands formed by accretion or by reliction, where allowed by law, excepting tax adjudicated lands, and not presently under mineral lease on December 14, 2011, situated in Tensas Parish, Louisiana, and more particularly described as follows: Beginning at a point having Coordinates of X = 2,354,637.72 and Y = 396,085.62; thence West approximately 7,712 feet to a point on the Eastern boundary of State Lease No. 476 having a Coordinate of Y = 396,085.62; thence along the boundary of said State Lease No. 476 the following: Northeasterly approximately 368 feet; Westerly approximately 3,011 feet and Northerly approximately 15,512 feet to a Northeast corner; thence Easterly approximately 10,718 feet to a point having Coordinates of X = 2,354,637.72 and Y = 411,903.11; thence South 15,817.48 feet to the point of beginning, **LESS AND EXCEPT** that portion, if any, of State Lease No. 476, as amended, which may lie within the above described tract, and **LESS AND EXCEPT** that portion, if any, of the above described tract that may lie within the State of Mississippi, containing approximately **2,105 acres**, all as more particularly outlined on a plat on file in the Office of Mineral Resources, Department of Natural Resources. All bearings, distances and coordinates are based on Louisiana Coordinate System of 1927, (North or South Zone), where applicable.

NOTE: The above description of the Tract nominated for lease has been provided and corrected, where required, exclusively by the nomination party. Any mineral lease selected from this Tract and awarded by the Louisiana State Mineral and Energy Board shall be without warranty of any kind, either express, implied, or statutory, including, but not limited to, the implied warranties of merchantability and fitness for a particular purpose. Should the mineral lease awarded by the Louisiana State Mineral and Energy Board be subsequently modified, cancelled or abrogated due to the existence of conflicting leases, operating agreements, private claims or other future obligations or conditions which may affect all or any portion of the leased Tract, it shall not relieve the Lessee of the obligation to pay any bonus due thereon to the Louisiana State Mineral and Energy Board, nor shall the Louisiana State Mineral and Energy Board be obligated to refund any consideration paid by the Lessor prior to such modification, cancellation, or abrogation, including, but not limited to, bonuses, rentals and royalties.

Applicant: CYPRESS ENERGY CORPORATION

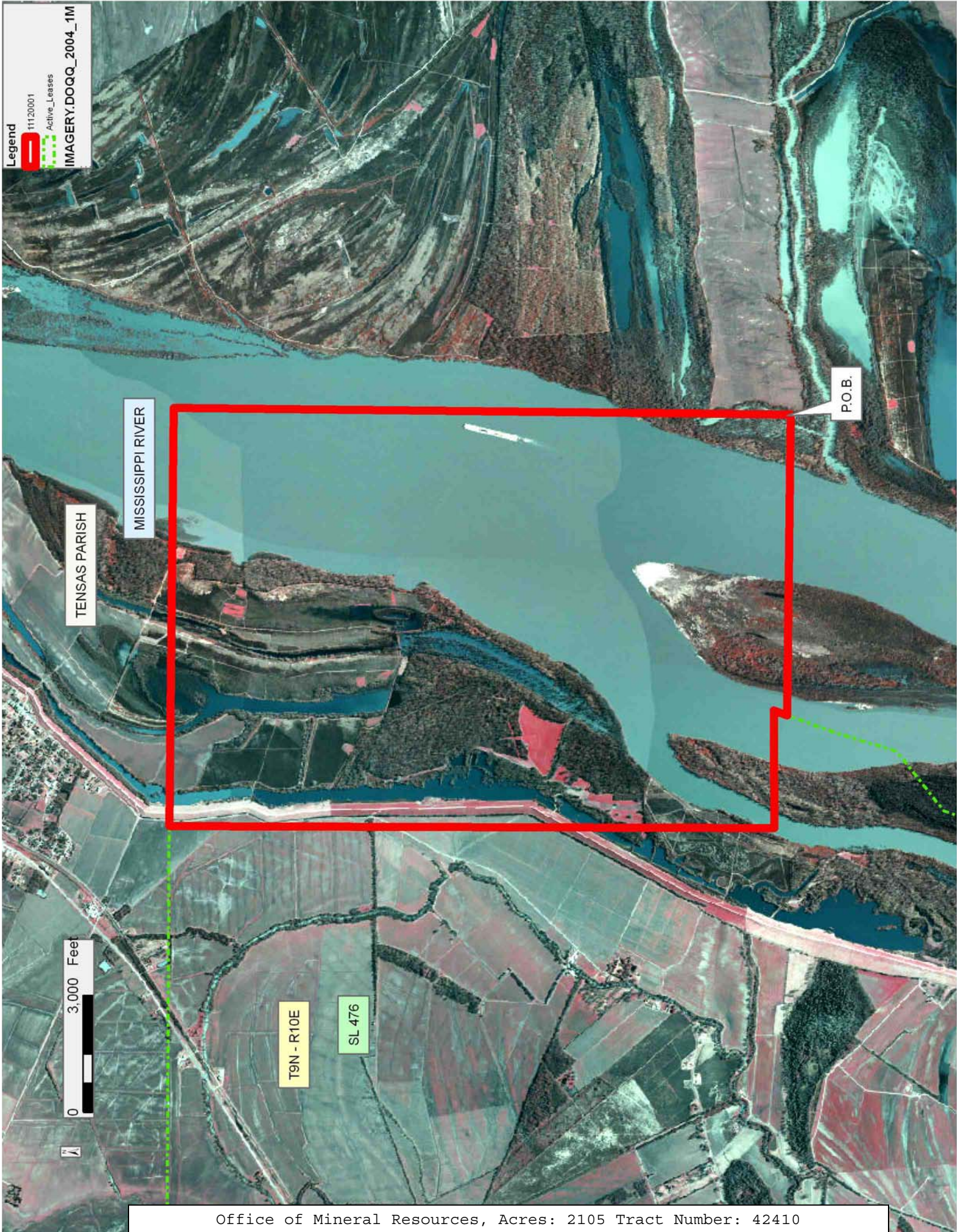
Bidder	Cash Payment	Price/Acre	Rental	Oil	Gas	Other

Legend

11120001

Active_Leases

IMAGERY.DOQQ_2004_1M



TENSAS PARISH

MISSISSIPPI RIVER

P.O.B.

0 3,000 Feet

T9N - R10E

SL 476

TRACT 42411 - Concordia and Tensas Parishes, Louisiana

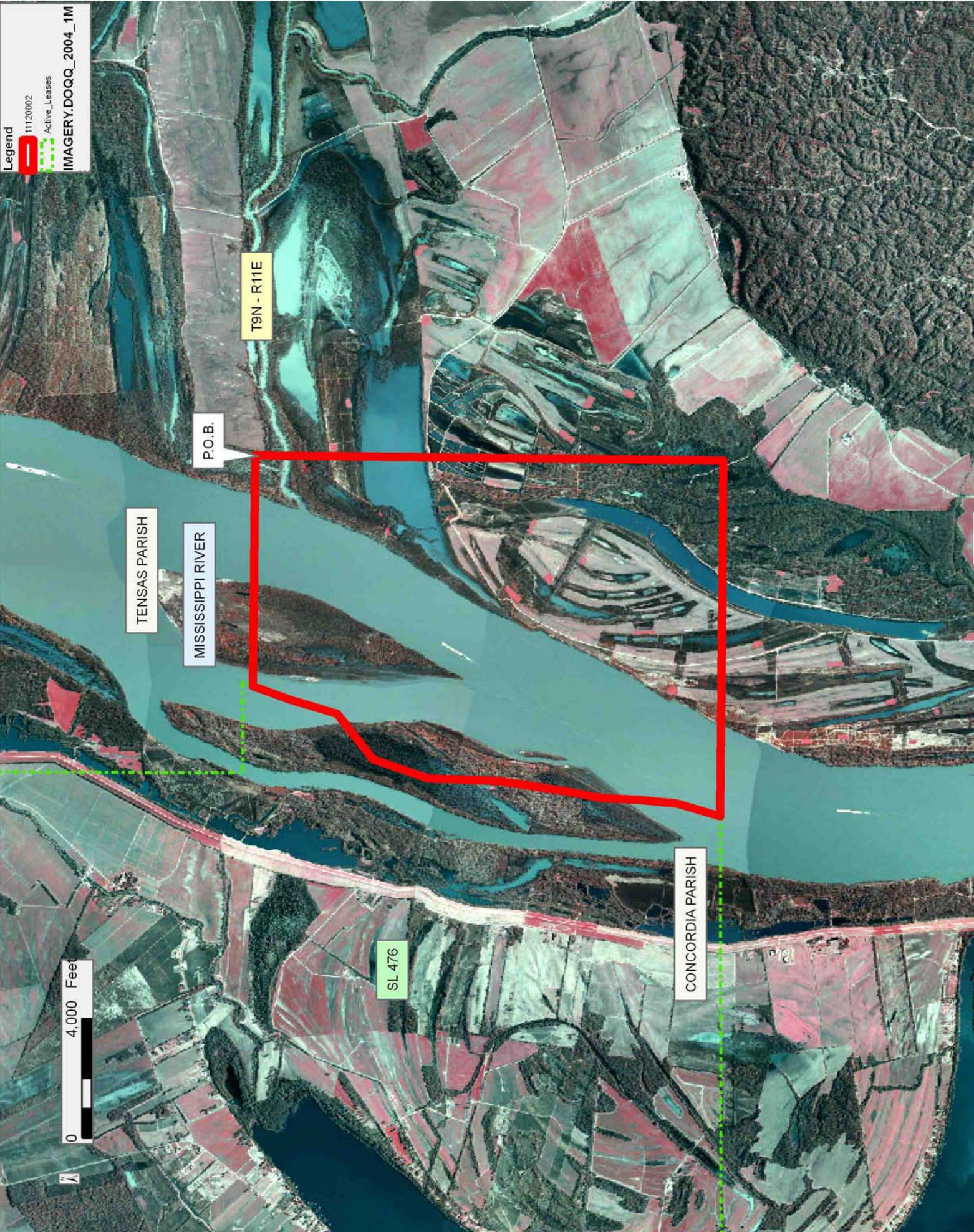
All of the lands now or formerly constituting the beds and bottoms of all water bodies of every nature and description as to which title is vested in the State of Louisiana, together with all islands arising therein and other lands formed by accretion or by reliction, where allowed by law, excepting tax adjudicated lands, and not presently under mineral lease on December 14, 2011, situated in Concordia and Tensas Parishes, Louisiana, and more particularly described as follows: Beginning at a point having Coordinates of X = 2,354,637.72 and Y = 396,085.62; thence South 15,634.43 feet to a point having Coordinates of X = 2,354,637.72 and Y = 380,451.19; thence Westerly approximately 11,891 feet to the Southeast corner of State Lease No. 476; thence Northeasterly along the meanders of the Eastern boundary of said State Lease No. 476 to a point of intersection with an East-West line having a Coordinate of Y = 396,085.62; thence East approximately 7,712 feet along said line to the point of beginning, **LESS AND EXCEPT** that portion, if any, of State Lease No. 476, as amended, which may lie within the above described tract, and **LESS AND EXCEPT** that portion, if any, of the above described tract that may lie within the State of Mississippi, containing approximately **1,406 acres**, all as more particularly outlined on a plat on file in the Office of Mineral Resources, Department of Natural Resources. All bearings, distances and coordinates are based on Louisiana Coordinate System of 1927, (North or South Zone), where applicable.

NOTE: The above description of the Tract nominated for lease has been provided and corrected, where required, exclusively by the nomination party. Any mineral lease selected from this Tract and awarded by the Louisiana State Mineral and Energy Board shall be without warranty of any kind, either express, implied, or statutory, including, but not limited to, the implied warranties of merchantability and fitness for a particular purpose. Should the mineral lease awarded by the Louisiana State Mineral and Energy Board be subsequently modified, cancelled or abrogated due to the existence of conflicting leases, operating agreements, private claims or other future obligations or conditions which may affect all or any portion of the leased Tract, it shall not relieve the Lessee of the obligation to pay any bonus due thereon to the Louisiana State Mineral and Energy Board, nor shall the Louisiana State Mineral and Energy Board be obligated to refund any consideration paid by the Lessor prior to such modification, cancellation, or abrogation, including, but not limited to, bonuses, rentals and royalties.

Applicant: CYPRESS ENERGY CORPORATION

Bidder	Cash Payment	Price/Acre	Rental	Oil	Gas	Other

Legend
11120002
Active_Leases
IMAGERY.DOQQ_2004_1M



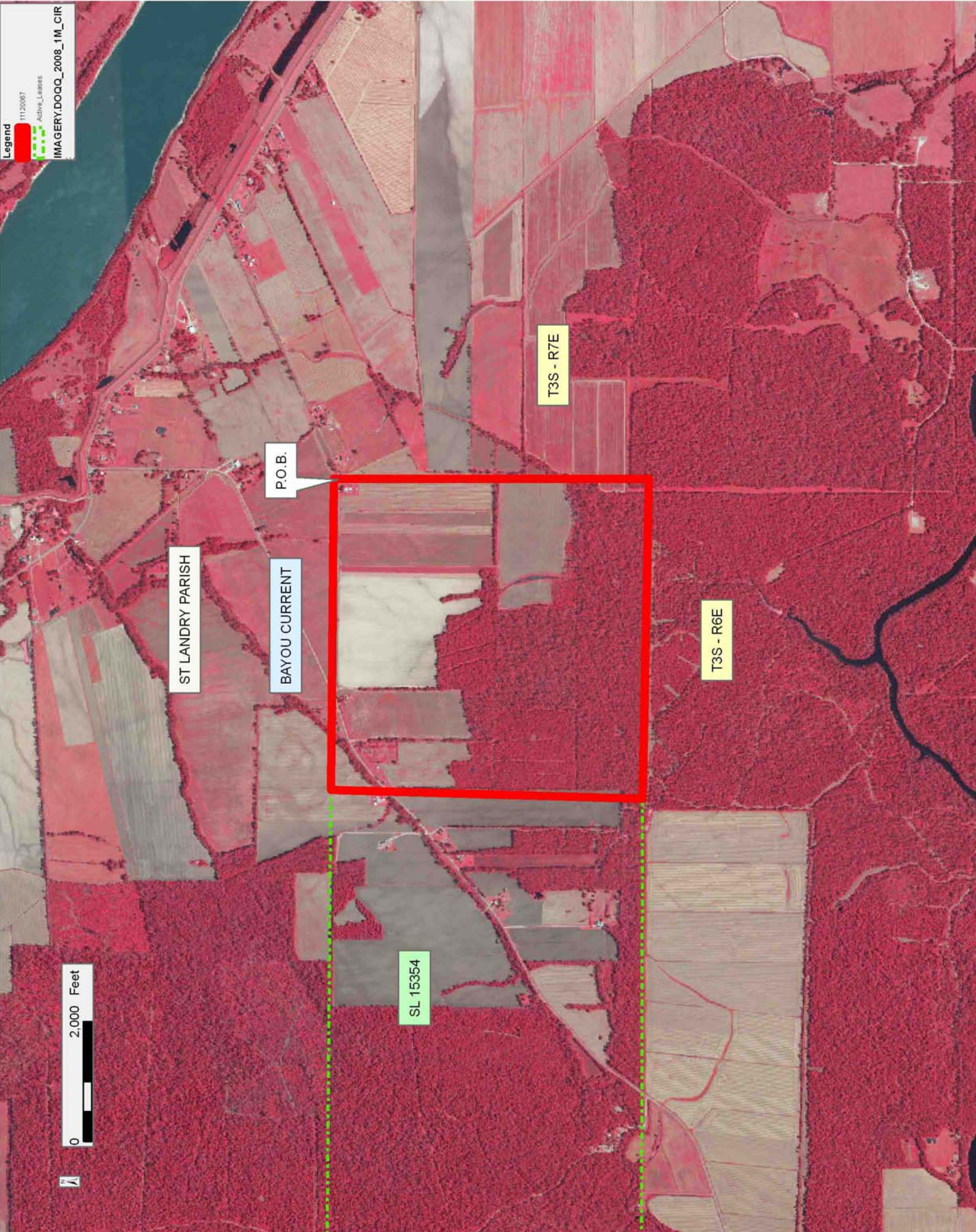
TRACT 42412 - St. Landry Parish, Louisiana

All of the lands now or formerly constituting the beds and bottoms of all water bodies of every nature and description as to which title is vested in the State of Louisiana, together with all islands arising therein and other lands formed by accretion or by reliction, where allowed by law, excepting tax adjudicated lands, and not presently under mineral lease on December 14, 2011, situated in St. Landry Parish, Louisiana, and more particularly described as follows: Beginning at a point having Coordinates of X = 1,852,788.56 and Y = 771,133.74; thence South 5,256.43 feet to a point having Coordinates of X = 1,852,788.56 and Y = 765,877.31; thence Westerly approximately 5,334 feet to the Southeast corner of State Lease No. 15354; thence Northerly approximately 5,194 feet along the Eastern boundary of said State Lease No. 15354 to its Northeast corner; thence Easterly approximately 5,188 feet to a point of beginning, **LESS AND EXCEPT** that portion, if any, of State Lease No. 15354 which may lie within the above described tract, containing approximately **1 acre**, all as more particularly outlined on a plat on file in the Office of Mineral Resources, Department of Natural Resources. All bearings, distances and coordinates are based on Louisiana Coordinate System of 1927, (North or South Zone), where applicable.

NOTE: The above description of the Tract nominated for lease has been provided and corrected, where required, exclusively by the nomination party. Any mineral lease selected from this Tract and awarded by the Louisiana State Mineral and Energy Board shall be without warranty of any kind, either express, implied, or statutory, including, but not limited to, the implied warranties of merchantability and fitness for a particular purpose. Should the mineral lease awarded by the Louisiana State Mineral and Energy Board be subsequently modified, cancelled or abrogated due to the existence of conflicting leases, operating agreements, private claims or other future obligations or conditions which may affect all or any portion of the leased Tract, it shall not relieve the Lessee of the obligation to pay any bonus due thereon to the Louisiana State Mineral and Energy Board, nor shall the Louisiana State Mineral and Energy Board be obligated to refund any consideration paid by the Lessor prior to such modification, cancellation, or abrogation, including, but not limited to, bonuses, rentals and royalties.

Bidder	Cash Payment	Price/Acre	Rental	Oil	Gas	Other

Applicant: BELLARD & COMPANY, INC.



TRACT 42413 - St. Landry Parish, Louisiana

All of the lands now or formerly constituting the beds and bottoms of all water bodies of every nature and description as to which title is vested in the State of Louisiana, together with all islands arising therein and other lands formed by accretion or by reliction, where allowed by law, excepting tax adjudicated lands, and not presently under mineral lease on December 14, 2011, situated in St. Landry Parish, Louisiana, and more particularly described as follows: Beginning at the Southeast corner of State Lease No. 20728 having Coordinates of X = 1,825,961.56 and Y = 756,517.00; thence along the boundary of said State Lease No. 20728 as follows: North 02 degrees 16 minutes 57 seconds East 10,901.16 feet to a point having Coordinates of X = 1,826,395.72 and Y = 767,409.51; East approximately 214 feet to a point having a Coordinate of Y = 767,409.51 and Northerly approximately 14 feet to a point on the Southern boundary of State Lease No. 15350, as amended; thence along the boundary of said State Lease No. 15350 as follows: Easterly approximately 5,031 feet; Southerly approximately 334 feet and Easterly approximately 5,262 feet to a point on the Western boundary of State Lease No. 15354; thence along the boundary of said State Lease No. 15354 as follows: Southerly approximately 1,028 feet and Easterly approximately 7,547 feet to a point of intersection with a North-South line having a Coordinate of X = 1,844,441.56; thence South approximately 9,470 feet along said line to a point having Coordinates of X = 1,844,441.56 and Y = 756,517.00; thence West 18,480.00 feet to the point of beginning, **LESS AND EXCEPT** that portion, if any, of State Lease No. 15350, as amended, State Lease No. 15354, and State Lease No. 20728 which may lie within the above described tract, containing approximately **90 acres**, all as more particularly outlined on a plat on file in the Office of Mineral Resources, Department of Natural Resources. All bearings, distances and coordinates are based on Louisiana Coordinate System of 1927, (North or South Zone), where applicable.

NOTE: The above description of the Tract nominated for lease has been provided and corrected, where required, exclusively by the nomination party. Any mineral lease selected from this Tract and awarded by the Louisiana State Mineral and Energy Board shall be without warranty of any kind, either express, implied, or statutory, including, but not limited to, the implied warranties of merchantability and fitness for a particular purpose. Should the mineral lease awarded by the Louisiana State Mineral and Energy Board be subsequently modified, cancelled or abrogated due to the existence of conflicting leases, operating agreements, private claims or other future obligations or conditions which may affect all or any portion of the leased Tract, it shall not relieve the Lessee of the obligation to pay any bonus due thereon to the Louisiana State Mineral and Energy Board, nor shall the Louisiana State Mineral and Energy Board be obligated to refund any consideration paid by the Lessor prior to such modification, cancellation, or abrogation, including, but not limited to, bonuses, rentals and royalties.

Applicant: BELLARD & COMPANY, INC.

Bidder	Cash Payment	Price/Acre	Rental	Oil	Gas	Other

Legend

11120066

Active_Leases

IMAGERY.DOQQ_2008_1M_CIR

ST LANDRY PARISH

T3S - R6E

SL 15354

BAYOU TAMPAW

BAYOU ROUGE

SL 15350

T4S - R6E

P.O.B.

SL 20728

0 3,000 Feet

TRACT 42414 - St. Landry Parish, Louisiana

All of the lands now or formerly constituting the beds and bottoms of all water bodies of every nature and description as to which title is vested in the State of Louisiana, together with all islands arising therein and other lands formed by accretion or by reliction, where allowed by law, excepting tax adjudicated lands, and not presently under mineral lease on December 14, 2011, situated in St. Landry Parish, Louisiana, and more particularly described as follows: Beginning at a point having Coordinates of X = 1,844,441.56 and Y = 760,714.00; thence East 2,887.44 feet to a point having Coordinates of X = 1,847,329.00 and Y = 760,714.00; thence South 4,197.00 feet to a point having Coordinates of X = 1,847,329.00 and Y = 756,517.00; thence West 2,887.44 feet to a point having Coordinates of X = 1,844,441.56 and Y = 756,517.00; thence North 4,197.00 feet to the point of beginning, containing approximately **10 acres**, all as more particularly outlined on a plat on file in the Office of Mineral Resources, Department of Natural Resources. All bearings, distances and coordinates are based on Louisiana Coordinate System of 1927, (North or South Zone), where applicable.

NOTE: The above description of the Tract nominated for lease has been provided and corrected, where required, exclusively by the nomination party. Any mineral lease selected from this Tract and awarded by the Louisiana State Mineral and Energy Board shall be without warranty of any kind, either express, implied, or statutory, including, but not limited to, the implied warranties of merchantability and fitness for a particular purpose. Should the mineral lease awarded by the Louisiana State Mineral and Energy Board be subsequently modified, cancelled or abrogated due to the existence of conflicting leases, operating agreements, private claims or other future obligations or conditions which may affect all or any portion of the leased Tract, it shall not relieve the Lessee of the obligation to pay any bonus due thereon to the Louisiana State Mineral and Energy Board, nor shall the Louisiana State Mineral and Energy Board be obligated to refund any consideration paid by the Lessor prior to such modification, cancellation, or abrogation, including, but not limited to, bonuses, rentals and royalties.

Applicant: BELLARD & COMPANY, INC.

Bidder	Cash Payment	Price/Acre	Rental	Oil	Gas	Other

Legend

11120068

IMAGERY.DOQQ_2008_1M_CIR

0 2,000 Feet

ST LANDRY PARISH

T3S - R6E

P.O.B.

BAYOU ROUGE

T4S - R6E



TRACT 42415 - Portion of Blocks 15, and 22, Main Pass Area, Revised, Plaquemines Parish, Louisiana

All of the lands now or formerly constituting the beds and bottoms of all water bodies of every nature and description as to which title is vested in the State of Louisiana, together with all islands arising therein and other lands formed by accretion or by reliction, where allowed by law, excepting tax adjudicated lands, and not presently under mineral lease on December 14, 2011, situated in Plaquemines Parish, Louisiana, and more particularly described as follows: Beginning at a point on the West line of Block 15, Main Pass Area, Revised, having Coordinates of X = 2,605,850.00 and Y = 338,340.00; thence East 12,150.00 feet to a point having Coordinates of X = 2,618,000.00 and Y = 338,340.00; thence South 1,260.00 feet a point on the North line of Block 22, Main Pass Area, Revised, having Coordinates of X = 2,618,000.00 and Y = 337,080.00; thence South 7,018.00 feet to a point having Coordinates of X = 2,618,000.00 and Y = 330,062.00; thence West 12,150.00 feet to a point on the West line of said Block 22 having Coordinates of X = 2,605,850.00 and Y = 330,062.00; thence North 7,018.00 feet along the West line of said Block 22 to its Northwest corner, also being the Southwest corner of said Block 15, having Coordinates of X = 2,605,850.00 and Y = 337,080.00; thence North 1,260.00 feet along the West line of said Block 15 to the point of beginning, containing **2,308.95 acres**, all as more particularly outlined on a plat on file in the Office of Mineral Resources, Department of Natural Resources. All bearings, distances and coordinates are based on Louisiana Coordinate System of 1927, (North or South Zone), where applicable.

NOTE: The above description of the Tract nominated for lease has been provided and corrected, where required, exclusively by the nomination party. Any mineral lease selected from this Tract and awarded by the Louisiana State Mineral and Energy Board shall be without warranty of any kind, either express, implied, or statutory, including, but not limited to, the implied warranties of merchantability and fitness for a particular purpose. Should the mineral lease awarded by the Louisiana State Mineral and Energy Board be subsequently modified, cancelled or abrogated due to the existence of conflicting leases, operating agreements, private claims or other future obligations or conditions which may affect all or any portion of the leased Tract, it shall not relieve the Lessee of the obligation to pay any bonus due thereon to the Louisiana State Mineral and Energy Board, nor shall the Louisiana State Mineral and Energy Board be obligated to refund any consideration paid by the Lessor prior to such modification, cancellation, or abrogation, including, but not limited to, bonuses, rentals and royalties.

NOTE: The State of Louisiana does hereby reserve, and this lease shall be subject to, the imprescriptible right of surface use in the nature of a servitude in favor of the Department of Natural Resources, including its Offices and Commissions, for the sole purpose of implementing, constructing, servicing and maintaining approved coastal zone management and/or restoration projects. Utilization of any and all rights derived

under this lease by the mineral lessee, its agents, successors or assigns, shall not interfere with nor hinder the reasonable surface use by the Department of Natural Resources, its Offices or Commissions, as herein above reserved.

NOTE: This tract is located in an area designated by the Louisiana Legislature or the Wildlife and Fisheries Commission as a Public Oyster Seed Ground, Reservation, or area of Calcasieu or Sabine Lake. Proposed projects occurring in these areas will be evaluated on a case by case basis by Louisiana Department of Wildlife & Fisheries. Modifications to proposed project features including, but not limited to, access routes, well sites, flowlines, and appurtenant structures maybe required by the Louisiana Department of Wildlife and Fisheries. In addition, compensatory mitigation will be required to offset unavoidable habitat impacts.

Applicant: SAMW PETROLEUM GROUP

Bidder	Cash Payment	Price/Acre	Rental	Oil	Gas	Other

Legend

11120010

Blocks

Tracts

PLAQUEMINES PARISH

GULF OF MEXICO

MP0015

MP0022

MAIN PASS AREA, REVISED

0 2,000 Feet



MP0014

P.O.B.

MP0023

TRACT 42416 - Portion of Blocks 13, 14, and 23, Main Pass Area, Revised, Plaquemines Parish, Louisiana

All of the lands now or formerly constituting the beds and bottoms of all water bodies of every nature and description as to which title is vested in the State of Louisiana, together with all islands arising therein and other lands formed by accretion or by reliction, where allowed by law, excepting tax adjudicated lands, and not presently under mineral lease on December 14, 2011, situated in Plaquemines Parish, Louisiana, and more particularly described as follows: Beginning at a point on the East line of Block 14, Main Pass Area, Revised, having Coordinates of X = 2,605,850.00 and Y = 338,340.00; thence South 1,260.00 feet along the East line of said Block 14 to its Southeast corner, also being the Northeast corner of Block 23, Main Pass Area, Revised, having Coordinates of X = 2,605,850.00 and Y = 337,080.00; thence South 9,280.00 feet along the East line of said Block 23 to a point having Coordinates of X = 2,605,850.00 and Y = 327,800.00; thence West approximately 7,068 feet to a point on the Eastern boundary of State Lease No. 195, as amended, having a Coordinate of Y = 327,800.00; thence along the boundary of said State Lease No. 195 the following: Northerly approximately 4,402 feet to a point and Northwesterly 12,724 feet to a point of intersection on a East-West line having a Coordinate of Y = 338,340.00; thence East approximately 3,535 feet along said line to a point on the East line of Block 13, Main Pass Area, Revised, also being the West line of said Block 14, having Coordinates of X = 2,591,100.00 and Y = 338,340.00; thence East 6,547.00 feet to the Northwest corner of State Lease No. 20344 having Coordinates of X = 2,597,647.00 and Y = 338,340.00; thence along the boundary of said State Lease No. 20344 the following courses: South 1,260.00 feet to a point having Coordinates of X = 2,597,647.00 and Y = 337,080.00; South 3,104.00 feet to a point having Coordinates of X = 2,597,647.00 and Y = 333,976.00; East 2,963.00 feet to a point having Coordinates of X = 2,600,610.00 and Y = 333,976.00; North 3,104.00 feet to a point having Coordinates of X = 2,600,610.00 and Y = 337,080.00 and North 1,260.00 feet to its Northeast corner having Coordinates of X = 2,600,610.00 and Y = 338,340.00; thence East 5,240.00 feet to the point of beginning, **LESS AND EXCEPT** that portion, if any, of State Lease No. 195, as amended, that may lie within the above described tract, containing approximately **2,212 acres**, all as more particularly outlined on a plat on file in the Office of Mineral Resources, Department of Natural Resources. All bearings, distances and coordinates are based on Louisiana Coordinate System of 1927, (North or South Zone), where applicable.

NOTE: The above description of the Tract nominated for lease has been provided and corrected, where required, exclusively by the nomination party. Any mineral lease selected from this Tract and awarded by the Louisiana State Mineral and Energy Board shall be without warranty of any kind, either express, implied, or statutory, including, but not limited to, the implied warranties of merchantability and fitness for a particular purpose. Should the mineral lease awarded by the Louisiana State Mineral and Energy Board be subsequently modified, cancelled or abrogated due to

the existence of conflicting leases, operating agreements, private claims or other future obligations or conditions which may affect all or any portion of the leased Tract, it shall not relieve the Lessee of the obligation to pay any bonus due thereon to the Louisiana State Mineral and Energy Board, nor shall the Louisiana State Mineral and Energy Board be obligated to refund any consideration paid by the Lessor prior to such modification, cancellation, or abrogation, including, but not limited to, bonuses, rentals and royalties.

NOTE: The State of Louisiana does hereby reserve, and this lease shall be subject to, the imprescriptible right of surface use in the nature of a servitude in favor of the Department of Natural Resources, including its Offices and Commissions, for the sole purpose of implementing, constructing, servicing and maintaining approved coastal zone management and/or restoration projects. Utilization of any and all rights derived under this lease by the mineral lessee, its agents, successors or assigns, shall not interfere with nor hinder the reasonable surface use by the Department of Natural Resources, its Offices or Commissions, as herein above reserved.

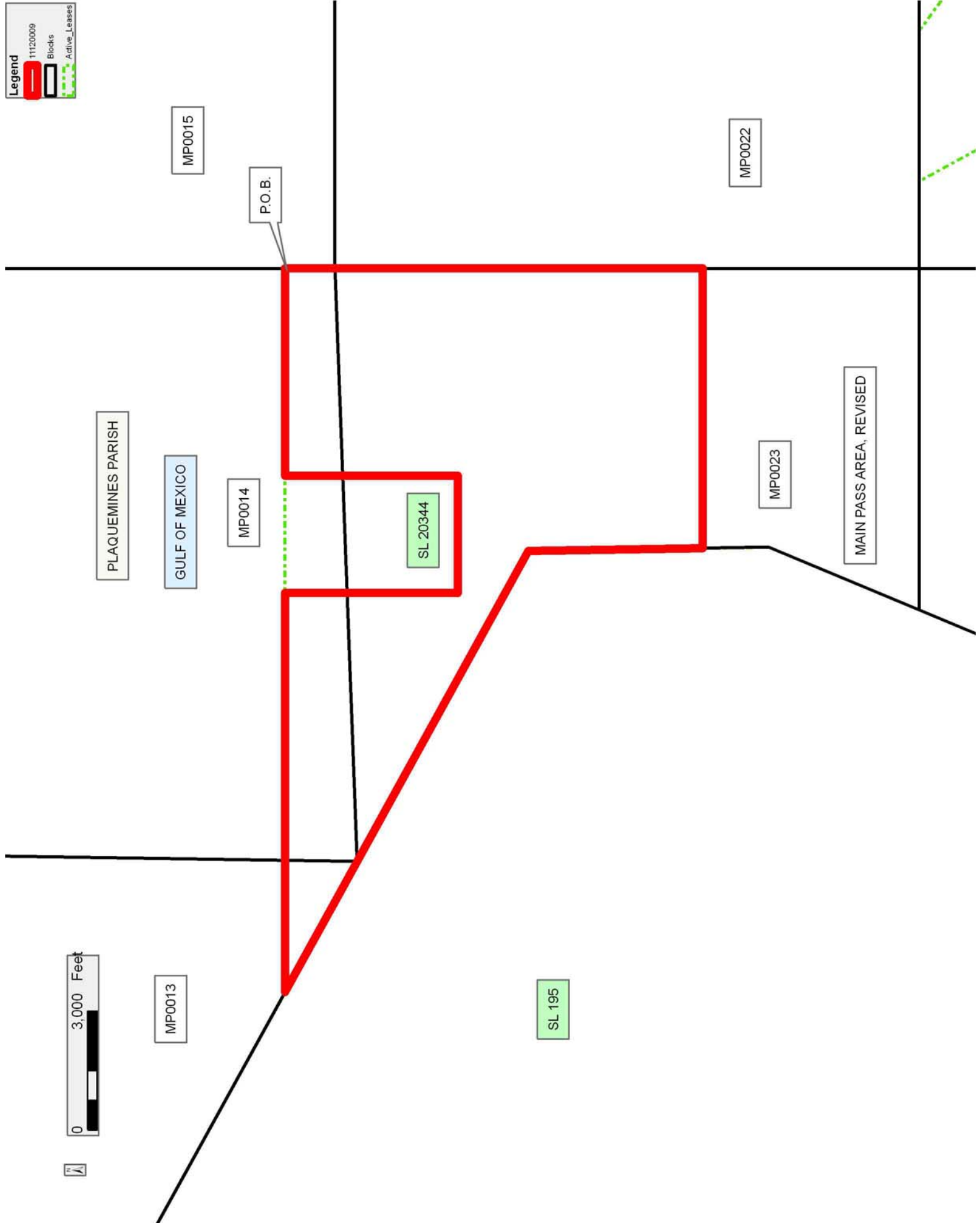
NOTE: This tract is located in an area designated by the Louisiana Legislature or the Wildlife and Fisheries Commission as a Public Oyster Seed Ground, Reservation, or area of Calcasieu or Sabine Lake. Proposed projects occurring in these areas will be evaluated on a case by case basis by Louisiana Department of Wildlife & Fisheries. Modifications to proposed project features including, but not limited to, access routes, well sites, flowlines, and appurtenant structures maybe required by the Louisiana Department of Wildlife and Fisheries. In addition, compensatory mitigation will be required to offset unavoidable habitat impacts.

Applicant: SAMW PETROLEUM GROUP

Bidder	Cash Payment	Price/Acre	Rental	Oil	Gas	Other

Legend

- 11120009 Blocks
- Active_Leases



TRACT 42417 - Portion of Blocks 23, and 24, Main Pass Area, Revised, Plaquemines Parish, Louisiana

All of the lands now or formerly constituting the beds and bottoms of all water bodies of every nature and description as to which title is vested in the State of Louisiana, together with all islands arising therein and other lands formed by accretion or by reliction, where allowed by law, excepting tax adjudicated lands, and not presently under mineral lease on December 14, 2011, situated in Plaquemines Parish, Louisiana, and more particularly described as follows: Beginning at a point on the East line of Block 23, Main Pass Area, Revised, having Coordinates of X = 2,605,850.00 and Y = 327,800.00; thence South 5,470.00 feet along the East line of said Block 23 to its Southeast corner, also being the Northeast corner of Block 24, Main Pass Area, Revised, having Coordinates of X = 2,605,850.00 and Y = 322,330.00; thence South 4,622.00 feet along the East line of said Block 24 to a point having Coordinates of X = 2,605,850.00 and Y = 317,708.00; thence West approximately 10,565 feet to a point on the Eastern boundary of State Lease No. 195, as amended, having a Coordinate of Y = 317,708.00; thence along the boundary of said State Lease No. 195 the following: Northeasterly approximately 9,141 feet to a point and Northerly 1,658 feet to a point of intersection on a East-West line having a Coordinate of Y = 327,800.00; thence East approximately 7,068 feet along said line to the point of beginning, **LESS AND EXCEPT** that portion, if any, of State Lease No. 195, as amended, that may lie within the above described tract, containing approximately **1,973 acres**, all as more particularly outlined on a plat on file in the Office of Mineral Resources, Department of Natural Resources. All bearings, distances and coordinates are based on Louisiana Coordinate System of 1927, (North or South Zone), where applicable.

NOTE: The above description of the Tract nominated for lease has been provided and corrected, where required, exclusively by the nomination party. Any mineral lease selected from this Tract and awarded by the Louisiana State Mineral and Energy Board shall be without warranty of any kind, either express, implied, or statutory, including, but not limited to, the implied warranties of merchantability and fitness for a particular purpose. Should the mineral lease awarded by the Louisiana State Mineral and Energy Board be subsequently modified, cancelled or abrogated due to the existence of conflicting leases, operating agreements, private claims or other future obligations or conditions which may affect all or any portion of the leased Tract, it shall not relieve the Lessee of the obligation to pay any bonus due thereon to the Louisiana State Mineral and Energy Board, nor shall the Louisiana State Mineral and Energy Board be obligated to refund any consideration paid by the Lessor prior to such modification, cancellation, or abrogation, including, but not limited to, bonuses, rentals and royalties.

NOTE: The State of Louisiana does hereby reserve, and this lease shall be subject to, the imprescriptible right of surface use in the nature of a servitude in favor of the Department of Natural Resources, including its

Offices and Commissions, for the sole purpose of implementing, constructing, servicing and maintaining approved coastal zone management and/or restoration projects. Utilization of any and all rights derived under this lease by the mineral lessee, its agents, successors or assigns, shall not interfere with nor hinder the reasonable surface use by the Department of Natural Resources, its Offices or Commissions, as herein above reserved.

NOTE: This tract is located in an area designated by the Louisiana Legislature or the Wildlife and Fisheries Commission as a Public Oyster Seed Ground, Reservation, or area of Calcasieu or Sabine Lake. Proposed projects occurring in these areas will be evaluated on a case by case basis by Louisiana Department of Wildlife & Fisheries. Modifications to proposed project features including, but not limited to, access routes, well sites, flowlines, and appurtenant structures maybe required by the Louisiana Department of Wildlife and Fisheries. In addition, compensatory mitigation will be required to offset unavoidable habitat impacts.

Applicant: SAMW PETROLEUM GROUP

Bidder	Cash Payment	Price/Acre	Rental	Oil	Gas	Other

Legend

- 1120011
- Blocks
- Active_Leases

