

TRACT 42418 - Plaquemines Parish, Louisiana

All of the lands now or formerly constituting the beds and bottoms of all water bodies of every nature and description as to which title is vested in the State of Louisiana, together with all islands arising therein and other lands formed by accretion or by reliction, where allowed by law, excepting tax adjudicated lands, and not presently under mineral lease on December 14, 2011, situated in Plaquemines Parish, Louisiana, and more particularly described as follows: Beginning at a point having Coordinates of X = 2,502,738.81 and Y = 248,072.70; thence South 88 degrees 08 minutes 41 seconds West 5,951.93 feet to a point having Coordinates of X = 2,496,790.00 and Y = 247,880.00; thence North 01 degrees 43 minutes 57 seconds West approximately 3,430 feet to a point on the South boundary of that certain Agreement between Cockrell et al and the State of Louisiana, dated May 16, 1938, recorded in Book 88, Page 189, in Plaquemines Parish; thence Easterly approximately 761 feet along the South boundary of said Agreement to the Westernmost Northwest corner of Tract 2 State Lease No. 19490, as amended; thence along the boundary of said State Lease No. 19490 the following courses: South approximately 1,023 feet to a point having Coordinates of X = 2,497,447.60 and Y = 250,295.81, East 642.40 feet to a point having Coordinates of X = 2,498,090.00 and Y = 250,295.81, North 284.19 feet to a point having Coordinates of X = 2,498,090.00 and Y = 250,580.00, East 610.34 feet to a point having Coordinates of X = 2,498,700.34 and Y = 250,580.00, North 1,111.31 feet to a point having Coordinates of X = 2,498,700.34 and Y = 251,691.31 and West approximately 616 feet to its Northernmost Northwest corner and a point on said Agreement; thence Northwesterly approximately 760 feet along the East boundary of said Agreement to the Southwest corner of State Lease No. 18015; thence along the boundary of said State Lease No. 18015 the following courses: North 87 degrees 44 minutes 13 seconds East approximately 205 feet to a point having Coordinates of X = 2,498,279.13 and Y = 252,459.28 and North 02 degrees 15 minutes 47 seconds West 1,515.87 feet to the Southwest corner of Tract 3 State Lease No. 17267, as amended, having Coordinates of X = 2,498,219.27 and Y = 253,973.96; thence along the boundary of said State Lease No. 17267 the following courses: South 67 degrees 49 minutes 00 seconds East 182.67 feet to a point having Coordinates of X = 2,498,388.43 and Y = 253,904.99, North 24 degrees 24 minutes 06 seconds East 1,153.03 feet to a point having Coordinates of X = 2,498,864.78 and Y = 254,955.02 and North 75 degrees 41 minutes 38 seconds West 657.44 feet to its point of intersection with the South line of Tract 3 State Lease No. 1464, as amended, having Coordinates of X = 2,498,227.72 and Y = 255,117.48; thence South 88 degrees 12 minutes 11 seconds East 4,342.08 feet along the South line of said State Lease No. 1464 to a point having Coordinates of X = 2,502,567.67 and Y = 254,981.32; thence South 01 degrees 25 minutes 09 seconds East 6,910.73 feet to the point of beginning, containing approximately **321 acres**, all as more particularly outlined on a plat on file in the Office of Mineral Resources, Department of Natural Resources. All bearings, distances and coordinates are based on Louisiana Coordinate System of 1927, (North or South Zone), where applicable.

NOTE: The above description of the Tract nominated for lease has been provided and corrected, where required, exclusively by the nomination party. Any mineral lease selected from this Tract and awarded by the Louisiana State Mineral and Energy Board shall be without warranty of any kind, either express, implied, or statutory, including, but not limited to, the implied warranties of merchantability and fitness for a particular purpose. Should the mineral lease awarded by the Louisiana State Mineral and Energy Board be subsequently modified, cancelled or abrogated due to the existence of conflicting leases, operating agreements, private claims or other future obligations or conditions which may affect all or any portion of the leased Tract, it shall not relieve the Lessee of the obligation to pay any bonus due thereon to the Louisiana State Mineral and Energy Board, nor shall the Louisiana State Mineral and Energy Board be obligated to refund any consideration paid by the Lessor prior to such modification, cancellation, or abrogation, including, but not limited to, bonuses, rentals and royalties.

NOTE: The State of Louisiana does hereby reserve, and this lease shall be subject to, the imprescriptible right of surface use in the nature of a servitude in favor of the Department of Natural Resources, including its Offices and Commissions, for the sole purpose of implementing, constructing, servicing and maintaining approved coastal zone management and/or restoration projects. Utilization of any and all rights derived under this lease by the mineral lessee, its agents, successors or assigns, shall not interfere with nor hinder the reasonable surface use by the Department of Natural Resources, its Offices or Commissions, as herein above reserved.

Applicant: LESLIE M. COOPER

Bidder	Cash Payment	Price/Acre	Rental	Oil	Gas	Other

Legend

11120004

State Claimable Waterbottoms

Freeze Statute

Active Leases

IMAGERY.DOQQ_2008_1M_CIR

LAKE ROBINSON

P.O.B.

SL 1464

SL 17267

SL 18015

SL 19490

PLAQUEMINES PARISH

0 1,000 Feet

TRACT 42419 - Plaquemines Parish, Louisiana

All of the lands now or formerly constituting the beds and bottoms of all water bodies of every nature and description as to which title is vested in the State of Louisiana, together with all islands arising therein and other lands formed by accretion or by reliction, where allowed by law, excepting tax adjudicated lands, and not presently under mineral lease on December 14, 2011, situated in Plaquemines Parish, Louisiana, and more particularly described as follows: Beginning at a point on the South boundary of State lease No. 20379 having Coordinates of X = 2,483,116.12 and Y = 251,392.07; thence along the boundary of said State Lease No. 20379 the following courses: East 1,277.59 feet to a point having Coordinates of X = 2,484,393.71 and Y = 251,392.07 and North 45 degrees 15 minutes 30 seconds East 5.28 feet to the Southwest corner of State Lease No. 17990, as amended, having Coordinates of X = 2,484,397.46 and Y = 251,395.79; thence along the boundary of said State Lease No. 17990 the following courses: North 45 degrees 19 minutes 41 seconds East 772.52 feet to a point having Coordinates of X = 2,484,946.84 and Y = 251,938.91 and South 46 degrees 07 minutes 35 seconds East 102.63 feet to its Southeast corner having Coordinates of X = 2,485,020.82 and Y = 251,867.78, being a point on the West boundary of that certain Agreement between Cockrell et al and the State of Louisiana, dated May 16, 1938, recorded in Book 88, Page 189, in Plaquemines Parish; thence Southerly approximately 715 feet along the West boundary of said Agreement to its Southwest corner and Easterly approximately 4,065 feet to a point of intersection with a Coordinate of X = 2,489,095.07; thence South approximately 3,593 feet to a point having Coordinates of X = 2,489,095.07 and Y = 247,614.31; thence South 87 degrees 47 minutes 53 seconds West 8,186.58 feet to a point having Coordinates of X = 2,480,914.53 and Y = 247,299.77; thence North 00 degrees 54 minutes 22 seconds West 2,960.77 feet to a point on the south boundary of said State Lease No. 20379 having Coordinates of X = 2,480,867.71 and Y = 250,260.17; thence along the boundary of said State Lease No. 20379 the following courses: East 2,248.41 feet to a point having Coordinates of X = 2,483,116.12 and Y = 250,260.17 and North 1,131.90 feet to the point of beginning, containing approximately **138 acres**, all as more particularly outlined on a plat on file in the Office of Mineral Resources, Department of Natural Resources. All bearings, distances and coordinates are based on Louisiana Coordinate System of 1927, (North or South Zone), where applicable.

NOTE: The above description of the Tract nominated for lease has been provided and corrected, where required, exclusively by the nomination party. Any mineral lease selected from this Tract and awarded by the Louisiana State Mineral and Energy Board shall be without warranty of any kind, either express, implied, or statutory, including, but not limited to, the implied warranties of merchantability and fitness for a particular purpose. Should the mineral lease awarded by the Louisiana State Mineral and Energy Board be subsequently modified, cancelled or abrogated due to the existence of conflicting leases, operating agreements, private claims or other future obligations or conditions which may affect all or any

portion of the leased Tract, it shall not relieve the Lessee of the obligation to pay any bonus due thereon to the Louisiana State Mineral and Energy Board, nor shall the Louisiana State Mineral and Energy Board be obligated to refund any consideration paid by the Lessor prior to such modification, cancellation, or abrogation, including, but not limited to, bonuses, rentals and royalties.

NOTE: The State of Louisiana does hereby reserve, and this lease shall be subject to, the imprescriptible right of surface use in the nature of a servitude in favor of the Department of Natural Resources, including its Offices and Commissions, for the sole purpose of implementing, constructing, servicing and maintaining approved coastal zone management and/or restoration projects. Utilization of any and all rights derived under this lease by the mineral lessee, its agents, successors or assigns, shall not interfere with nor hinder the reasonable surface use by the Department of Natural Resources, its Offices or Commissions, as herein above reserved.

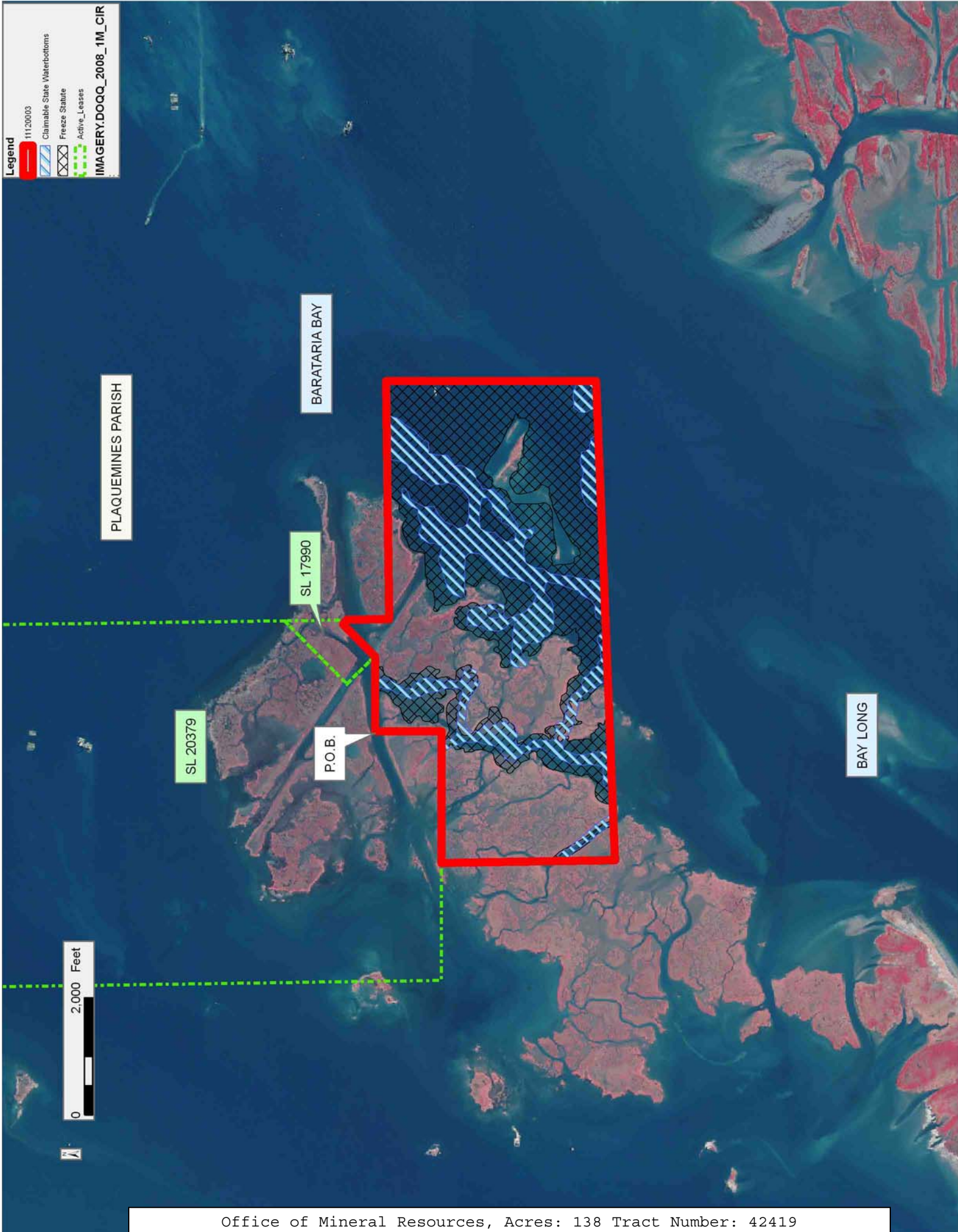
Applicant: LESLIE M. COOPER

Bidder	Cash Payment	Price/Acre	Rental	Oil	Gas	Other

Legend

- 11120003
- Claimable State Waterbottoms
- Freeze Stature
- Active Leases

IMAGERY.DOQQ_2008_1M_CIR



TRACT 42420 - Portion of Blocks 11, and 12, Grand Isle Area, Jefferson Parish, Louisiana

All of the lands now or formerly constituting the beds and bottoms of all water bodies of every nature and description as to which title is vested in the State of Louisiana, together with all islands arising therein and other lands formed by accretion or by reliction, where allowed by law, excepting tax adjudicated lands, and not presently under mineral lease on December 14, 2011, situated in Jefferson Parish, Louisiana, and more particularly described as follows: Beginning at a the Northwest corner of Block 11, Grand Isle Area, having Coordinates of X = 2,428,143.81 and Y = 200,293.43; thence East 7,379.02 feet along the North line of said Block 11, Grand Isle Area, to a point being the Northwest corner of State Lease No. 19707 having Coordinates of X = 2,435,522.83 and Y = 200,293.43; thence South 5,288.24 feet along the Western boundary of said State Lease No. 19707 to its Southwest corner having Coordinates of X = 2,435,522.83 and Y = 195,005.19, said point also being a point on the Louisiana Coastline, as decreed by the Supreme Court of the United States, as determined by a Special Master appointed therein, in litigation styled *United States v. State of Louisiana et al No. 9 Original*, in 1975; thence Southwesterly along said Louisiana Coastline to a point being the Southwest corner of said Block 11, Grand Isle Area having Coordinates of X = 2,428,143.81 and Y = 193,646.48, said point also being the Southernmost Southeast corner of State Lease No. 19710; thence along the Eastern and Northern boundaries of said State Lease No. 19710 the following: North 1,657.95 feet to a point having Coordinates of X = 2,428,143.81 and Y = 195,304.43; West 3,697.02 feet to a point having Coordinates of X = 2,424,446.79 and Y = 195,304.43; and North 4,989.00 feet to a point being the Northernmost Northeast corner of said State Lease No. 19710 having Coordinates of X = 2,424,446.79 and Y = 200,293.43, said point also being on the North line of Block 12, Grand Isle Area; thence East 3,697.02 feet on and along said North line of said Block 12, Grand Isle Area, to the point of beginning, containing approximately **1,434.33 acres**, all as more particularly outlined on a plat on file in the Office of Mineral Resources, Department of Natural Resources. All bearings, distances and coordinates are based on Louisiana Coordinate System of 1927, (North or South Zone), where applicable.

NOTE: The above description of the Tract nominated for lease has been provided and corrected, where required, exclusively by the nomination party. Any mineral lease selected from this Tract and awarded by the Louisiana State Mineral and Energy Board shall be without warranty of any kind, either express, implied, or statutory, including, but not limited to, the implied warranties of merchantability and fitness for a particular purpose. Should the mineral lease awarded by the Louisiana State Mineral and Energy Board be subsequently modified, cancelled or abrogated due to the existence of conflicting leases, operating agreements, private claims or other future obligations or conditions which may affect all or any portion of the leased Tract, it shall not relieve the Lessee of the obligation to pay any bonus due thereon to the Louisiana State Mineral and

Energy Board, nor shall the Louisiana State Mineral and Energy Board be obligated to refund any consideration paid by the Lessor prior to such modification, cancellation, or abrogation, including, but not limited to, bonuses, rentals and royalties.

NOTE: The State of Louisiana does hereby reserve, and this lease shall be subject to, the imprescriptible right of surface use in the nature of a servitude in favor of the Department of Natural Resources, including its Offices and Commissions, for the sole purpose of implementing, constructing, servicing and maintaining approved coastal zone management and/or restoration projects. Utilization of any and all rights derived under this lease by the mineral lessee, its agents, successors or assigns, shall not interfere with nor hinder the reasonable surface use by the Department of Natural Resources, its Offices or Commissions, as herein above reserved.

Applicant: ROBERT A. SCHROEDER, INC.

Bidder	Cash Payment	Price/Acre	Rental	Oil	Gas	Other

Legend

- 11120048
- Blocks
- Active_Leases

