

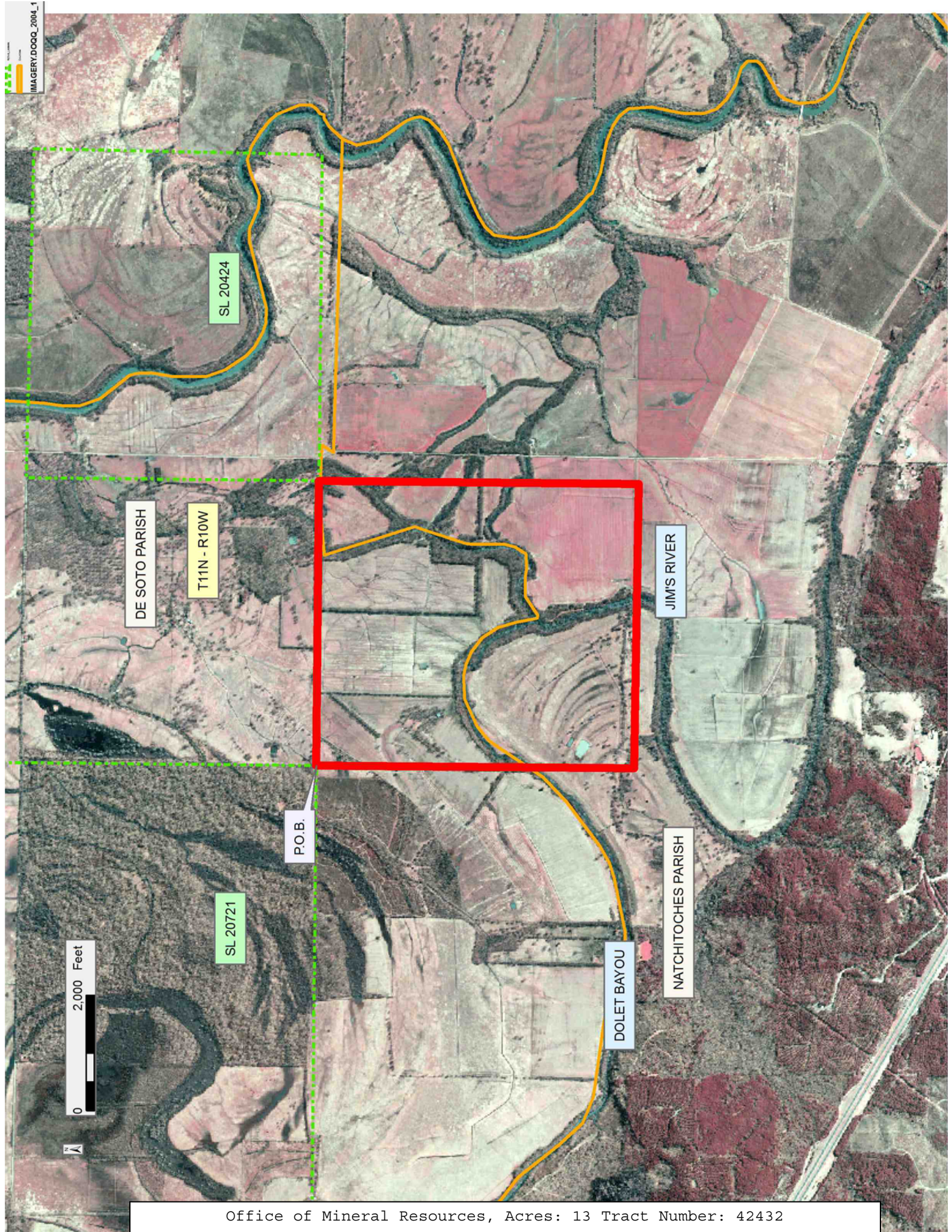
TRACT 42432 - De Soto and Natchitoches Parishes, Louisiana

All of the lands now or formerly constituting the beds and bottoms of all water bodies of every nature and description as to which title is vested in the State of Louisiana, together with all islands arising therein and other lands formed by accretion or by reliction, where allowed by law, excepting tax adjudicated lands, and not presently under mineral lease on January 11, 2012, situated in De Soto and Natchitoches Parishes, Louisiana, and more particularly described as follows: Beginning at a point being the Southeast corner of State Lease No. 20721, having Coordinates of X = 1,724,065.00 and Y = 461,670.00; thence East 4,935.00 feet to a point being the Southwest corner of State Lease No. 20424, having Coordinates of X = 1,729,000.00 and Y = 461,670.00; thence South 5,534.00 feet to a point having Coordinates of X = 1,729,000.00 and Y = 456,136.00; thence North 89 degrees 41 minutes 10 seconds West 4,923.32 feet to a point having Coordinates of X = 1,724,076.76 and Y = 456,162.96; thence North 00 degrees 07 minutes 20 seconds West 5,507.05 feet to the point of beginning, (This tract includes only waterbottoms claimed and owned by the state and specifically excludes any land which the state may claim or own and to which the mineral rights are vested in the state), containing approximately **13 acres**, all as more particularly outlined on a plat on file in the Office of Mineral Resources, Department of Natural Resources. All bearings, distances and coordinates are based on Louisiana Coordinate System of 1927, (North or South Zone), where applicable.

NOTE: The above description of the Tract nominated for lease has been provided and corrected, where required, exclusively by the nomination party. Any mineral lease selected from this Tract and awarded by the Louisiana State Mineral and Energy Board shall be without warranty of any kind, either express, implied, or statutory, including, but not limited to, the implied warranties of merchantability and fitness for a particular purpose. Should the mineral lease awarded by the Louisiana State Mineral and Energy Board be subsequently modified, cancelled or abrogated due to the existence of conflicting leases, operating agreements, private claims or other future obligations or conditions which may affect all or any portion of the leased Tract, it shall not relieve the Lessee of the obligation to pay any bonus due thereon to the Louisiana State Mineral and Energy Board, nor shall the Louisiana State Mineral and Energy Board be obligated to refund any consideration paid by the Lessor prior to such modification, cancellation, or abrogation, including, but not limited to, bonuses, rentals and royalties.

Applicant: MUSTANG EXPLORATION, LLC

Bidder	Cash Payment	Price/Acre	Rental	Oil	Gas	Other



IMAGERY.DOCQ_2004_1

SL 20424

T11N - R10W

DE SOTO PARISH

JIM'S RIVER

P.O.B.

SL 20721

NATCHITOCHE PARISH

DOLET BAYOU

0 2,000 Feet



TRACT 42433 - Pointe Coupee Parish, Louisiana

All of the lands now or formerly constituting the beds and bottoms of all water bodies of every nature and description as to which title is vested in the State of Louisiana, together with all islands arising therein and other lands formed by accretion or by reliction, where allowed by law, excepting tax adjudicated lands, and not presently under mineral lease on January 11, 2012, situated in Pointe Coupee Parish, Louisiana, and more particularly described as follows: Beginning at a point on East boundary of State Lease No. 20591 having Coordinates of X = 1,854,849.23 and Y = 823,023.61; thence East 18,405.03 feet to a point having Coordinates of X = 1,873,254.26 and Y = 823,023.61; thence South 11,680.00 feet to a point having Coordinates of X = 1,873,254.26 and Y = 811,343.61; thence West 18,480.00 feet to a point on the East boundary of said State Lease No. 20591 having Coordinates of X = 1,854,774.26 and Y = 811,343.61; thence North 00 degrees 22 minutes 04 seconds East 11,680.24 feet along the East boundary of said State Lease No. 20591 to the point of beginning, containing approximately **36 acres**, all as more particularly outlined on a plat on file in the Office of Mineral Resources, Department of Natural Resources. All bearings, distances and coordinates are based on Louisiana Coordinate System of 1927, (North or South Zone), where applicable.

NOTE: The above description of the Tract nominated for lease has been provided and corrected, where required, exclusively by the nomination party. Any mineral lease selected from this Tract and awarded by the Louisiana State Mineral and Energy Board shall be without warranty of any kind, either express, implied, or statutory, including, but not limited to, the implied warranties of merchantability and fitness for a particular purpose. Should the mineral lease awarded by the Louisiana State Mineral and Energy Board be subsequently modified, cancelled or abrogated due to the existence of conflicting leases, operating agreements, private claims or other future obligations or conditions which may affect all or any portion of the leased Tract, it shall not relieve the Lessee of the obligation to pay any bonus due thereon to the Louisiana State Mineral and Energy Board, nor shall the Louisiana State Mineral and Energy Board be obligated to refund any consideration paid by the Lessor prior to such modification, cancellation, or abrogation, including, but not limited to, bonuses, rentals and royalties.

Bidder	Cash Payment	Price/Acre	Rental	Oil	Gas	Other

Applicant: LESLIE M. COOPER

Legend

12010002

Active_Leases

IMAGERY.DOQQ_2008_1M_CIR

POINTE COUPEE PARISH

T1S - R7E

BAYOU MOREAU

T2S - R7E

BAYOU FISHER

0 3,000 Feet

P.O.B.

SL 20591

TRACT 42434 - Pointe Coupee Parish, Louisiana

All of the lands now or formerly constituting the beds and bottoms of all water bodies of every nature and description as to which title is vested in the State of Louisiana, together with all islands arising therein and other lands formed by accretion or by reliction, where allowed by law, excepting tax adjudicated lands, and not presently under mineral lease on January 11, 2012, situated in Pointe Coupee Parish, Louisiana, and more particularly described as follows: Beginning at a point on East boundary of State Lease No. 20591 having Coordinates of X = 1,854,774.26 and Y = 811,343.61; thence East 18,180.00 feet to a point having Coordinates of X = 1,872,954.26 and Y = 811,343.61; thence South 12,470.48 feet to a point having Coordinates of X = 1,872,954.26 and Y = 798,873.13; thence West 18,198.06 feet to a point having Coordinates of X = 1,854,756.20 and Y = 798,873.13; thence North 9,658.49 feet to the Southeast corner of said State Lease No. 20591 having Coordinates of X = 1,854,756.20 and Y = 808,531.63; thence North 00 degrees 22 minutes 04 seconds East 2,812.04 feet along the East boundary of said State Lease No. 20591 to the point of beginning, containing approximately **17 acres**, all as more particularly outlined on a plat on file in the Office of Mineral Resources, Department of Natural Resources. All bearings, distances and coordinates are based on Louisiana Coordinate System of 1927, (North or South Zone), where applicable.

NOTE: The above description of the Tract nominated for lease has been provided and corrected, where required, exclusively by the nomination party. Any mineral lease selected from this Tract and awarded by the Louisiana State Mineral and Energy Board shall be without warranty of any kind, either express, implied, or statutory, including, but not limited to, the implied warranties of merchantability and fitness for a particular purpose. Should the mineral lease awarded by the Louisiana State Mineral and Energy Board be subsequently modified, cancelled or abrogated due to the existence of conflicting leases, operating agreements, private claims or other future obligations or conditions which may affect all or any portion of the leased Tract, it shall not relieve the Lessee of the obligation to pay any bonus due thereon to the Louisiana State Mineral and Energy Board, nor shall the Louisiana State Mineral and Energy Board be obligated to refund any consideration paid by the Lessor prior to such modification, cancellation, or abrogation, including, but not limited to, bonuses, rentals and royalties.

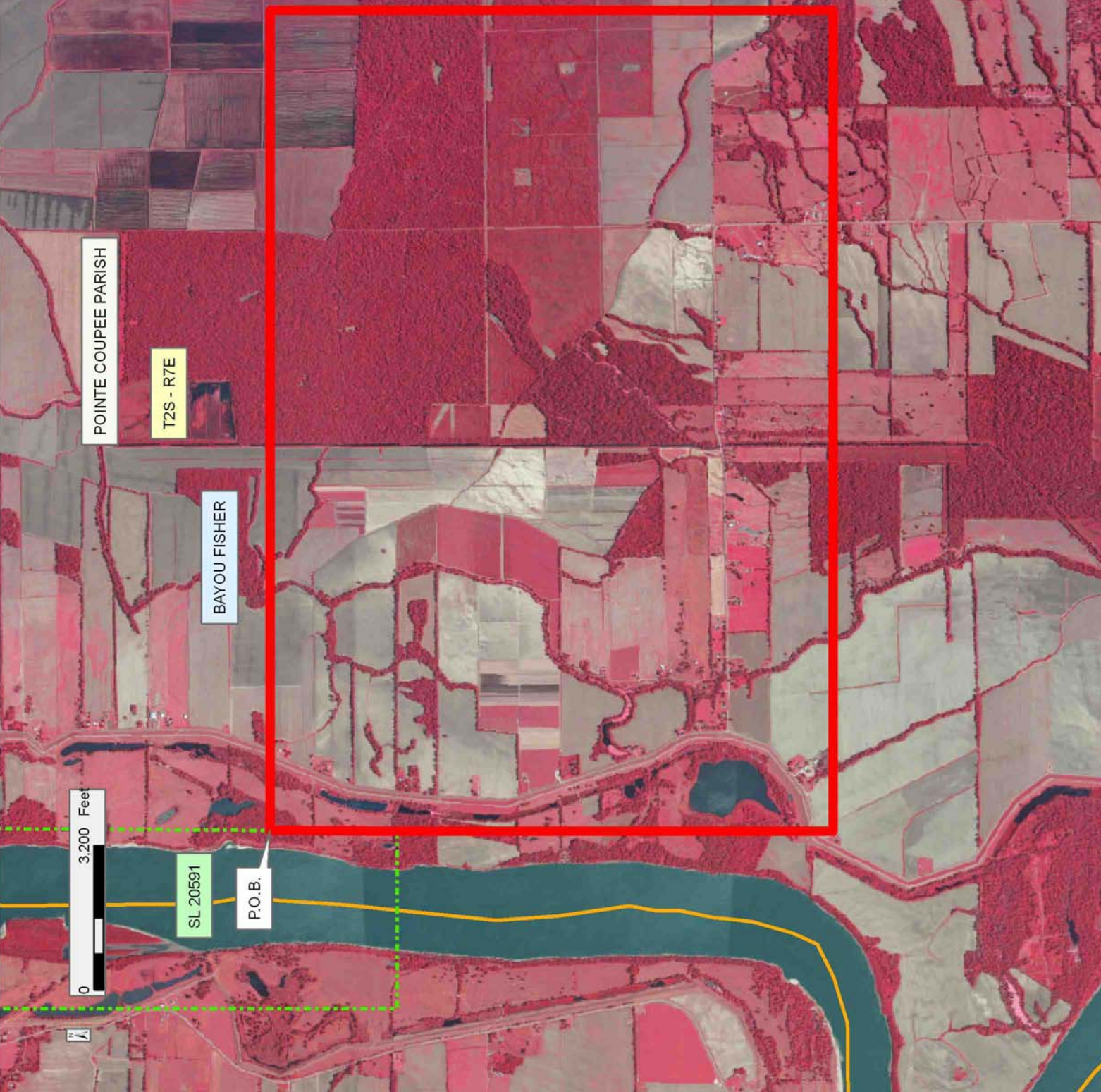
Applicant: LESLIE M. COOPER

Bidder	Cash Payment	Price/Acre	Rental	Oil	Gas	Other

Legend

- 12010003
- Active_Leases
- Counties

IMAGERY.DOQQ_2008_1M_CIR



POINTE COUPEE PARISH

T2S - R7E

BAYOU FISHER

SL 20591

P.O.B.

0 3,200 Feet

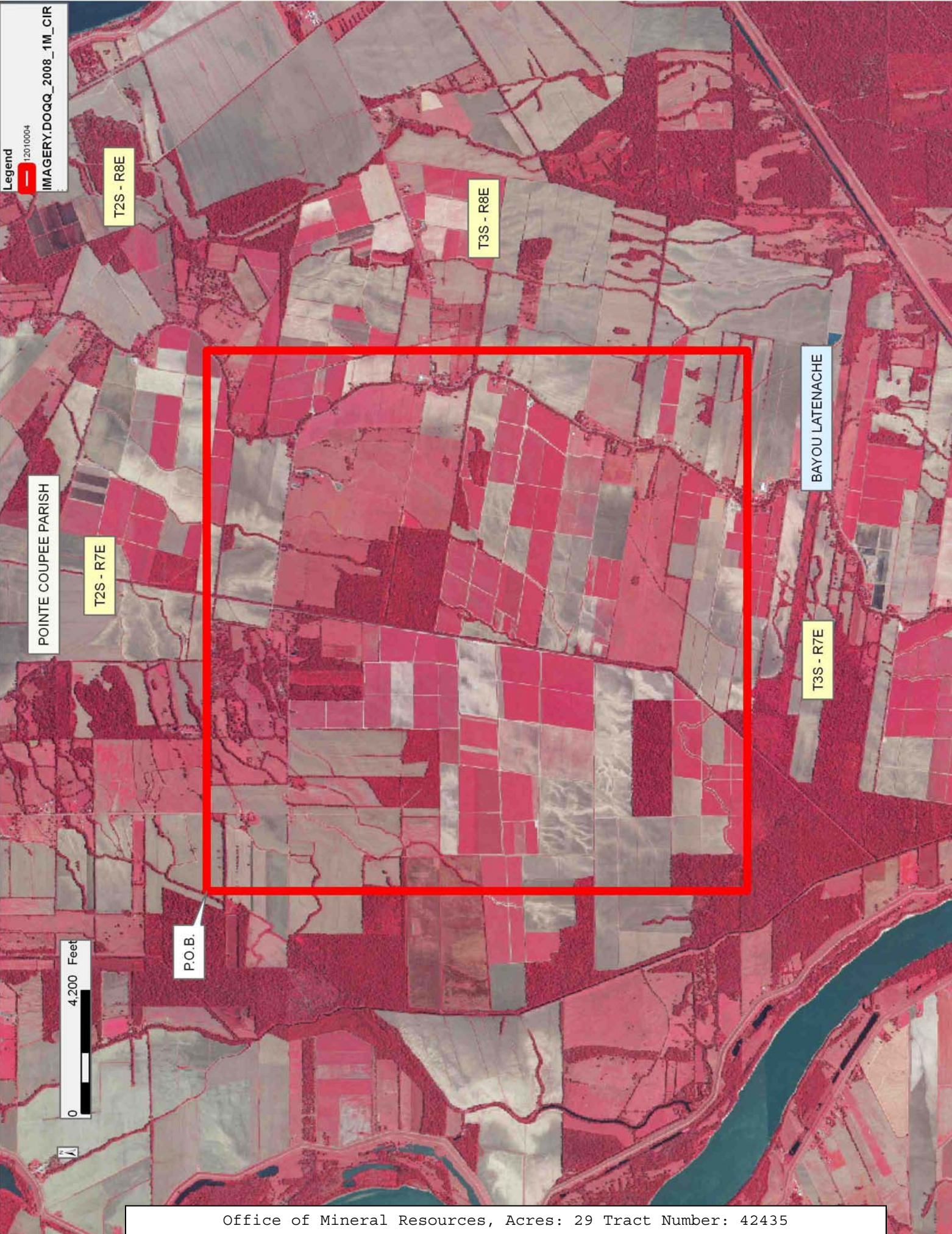
TRACT 42435 - Pointe Coupee Parish, Louisiana

All of the lands now or formerly constituting the beds and bottoms of all water bodies of every nature and description as to which title is vested in the State of Louisiana, together with all islands arising therein and other lands formed by accretion or by reliction, where allowed by law, excepting tax adjudicated lands, and not presently under mineral lease on January 11, 2012, situated in Pointe Coupee Parish, Louisiana, and more particularly described as follows: Beginning at a point having Coordinates of X = 1,865,622.78 and Y = 793,777.60; thence East 18,480.00 feet to a point having Coordinates of X = 1,884,102.78 and Y = 793,777.60; thence South 18,480.00 feet to a point having Coordinates of X = 1,884,102.78 and Y = 775,297.60; thence West 18,480.00 feet to a point having Coordinates of X = 1,865,622.78 and Y = 775,297.60; thence North 18,480.00 feet to the point of beginning, containing approximately **29 acres**, all as more particularly outlined on a plat on file in the Office of Mineral Resources, Department of Natural Resources. All bearings, distances and coordinates are based on Louisiana Coordinate System of 1927, (North or South Zone), where applicable.

NOTE: The above description of the Tract nominated for lease has been provided and corrected, where required, exclusively by the nomination party. Any mineral lease selected from this Tract and awarded by the Louisiana State Mineral and Energy Board shall be without warranty of any kind, either express, implied, or statutory, including, but not limited to, the implied warranties of merchantability and fitness for a particular purpose. Should the mineral lease awarded by the Louisiana State Mineral and Energy Board be subsequently modified, cancelled or abrogated due to the existence of conflicting leases, operating agreements, private claims or other future obligations or conditions which may affect all or any portion of the leased Tract, it shall not relieve the Lessee of the obligation to pay any bonus due thereon to the Louisiana State Mineral and Energy Board, nor shall the Louisiana State Mineral and Energy Board be obligated to refund any consideration paid by the Lessor prior to such modification, cancellation, or abrogation, including, but not limited to, bonuses, rentals and royalties.

Applicant: LESLIE M. COOPER

Bidder	Cash Payment	Price/Acre	Rental	Oil	Gas	Other



TRACT 42436 - Pointe Coupee and St. Landry Parishes, Louisiana

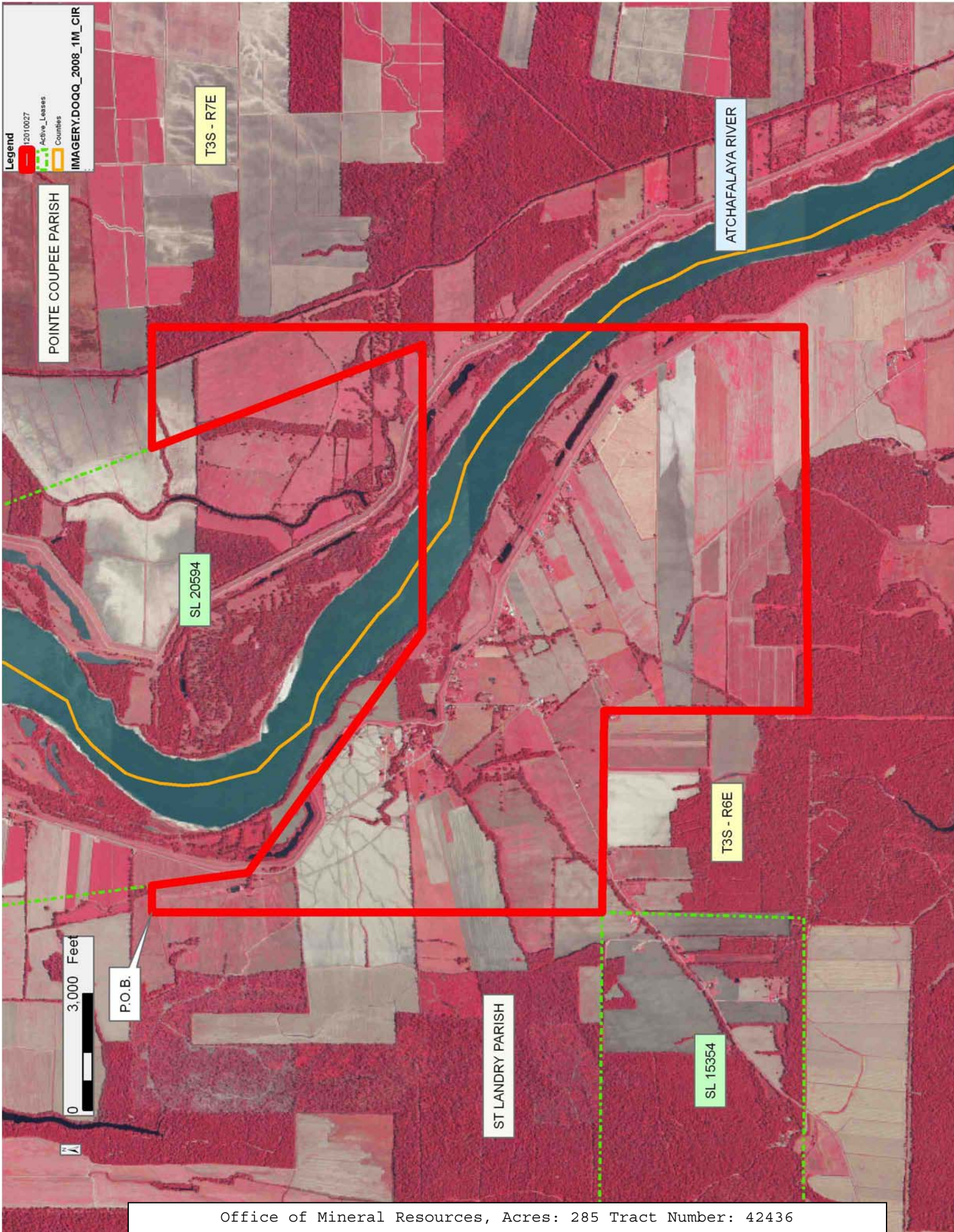
All of the lands now or formerly constituting the beds and bottoms of all water bodies of every nature and description as to which title is vested in the State of Louisiana, together with all islands arising therein and other lands formed by accretion or by reliction, where allowed by law, excepting tax adjudicated lands, and not presently under mineral lease on January 11, 2012, situated in Pointe Coupee and St. Landry Parishes, Louisiana, and more particularly described as follows: Beginning at a point having Coordinates of X = 1,847,599.21 and Y = 782,763.93; thence East 688.22 feet to a point on the West boundary of State Lease No. 20594 having Coordinates of X = 1,848,287.43 and Y = 782,763.93; thence along the boundary of said State Lease No. 20594 the following courses: South 07 degrees 36 minutes 11 seconds East 2,501.57 feet to a point having Coordinates of X = 1,848,618.41 and Y = 780,284.34, South 54 degrees 08 minutes 41 seconds East 7,657.27 feet to a point having Coordinates of X = 1,854,824.63 and Y = 775,799.18, East 7,379.38 feet to point having Coordinates of X = 1,862,204.00 and Y = 775,799.18, and North 20 degrees 55 minutes 17 seconds West 7,456.33 feet to a point having Coordinates of X = 1,859,541.45 and Y = 782,763.93; thence East 3,110.62 feet to a point having Coordinates of X = 1,862,652.07 and Y = 782,763.93; thence South 16,779.92 feet to a point having Coordinates of X = 1,862,652.07 and Y = 765,984.00; thence South 89 degrees 22 minutes 49 seconds West 9,864.09 feet to a point having Coordinates of X = 1,852,788.56 and Y = 765,877.31; thence North 5,256.43 feet to a point having Coordinates of X = 1,852,788.56 and Y = 771,133.74; thence Northwesterly approximately 5,190 feet to Northeast corner of State Lease No. 15354; thence Northerly approximately 11,587 feet to a point of beginning, **LESS AND EXCEPT** that portion, if any, of State Lease No. 15354 that may lie within the above described tract, containing approximately **285 acres**, all as more particularly outlined on a plat on file in the Office of Mineral Resources, Department of Natural Resources. All bearings, distances and coordinates are based on Louisiana Coordinate System of 1927, (North or South Zone), where applicable.

NOTE: The above description of the Tract nominated for lease has been provided and corrected, where required, exclusively by the nomination party. Any mineral lease selected from this Tract and awarded by the Louisiana State Mineral and Energy Board shall be without warranty of any kind, either express, implied, or statutory, including, but not limited to, the implied warranties of merchantability and fitness for a particular purpose. Should the mineral lease awarded by the Louisiana State Mineral and Energy Board be subsequently modified, cancelled or abrogated due to the existence of conflicting leases, operating agreements, private claims or other future obligations or conditions which may affect all or any portion of the leased Tract, it shall not relieve the Lessee of the obligation to pay any bonus due thereon to the Louisiana State Mineral and Energy Board, nor shall the Louisiana State Mineral and Energy Board be obligated to refund any consideration paid by the Lessor prior to such

modification, cancellation, or abrogation, including, but not limited to, bonuses, rentals and royalties.

Applicant: JANUS GULF COAST EXPLORATION, LLC

Bidder	Cash Payment	Price/Acre	Rental	Oil	Gas	Other



Legend

12010027

Active_Leases

Counties

IMAGERY.DOQQ_2008_1M_CIR

POINTE COUPEE PARISH

T3S - R7E

ATCHAFALAYA RIVER

SL 20594

T3S - R6E

0 3,000 Feet

P.O.B.

ST LANDRY PARISH

SL 15354

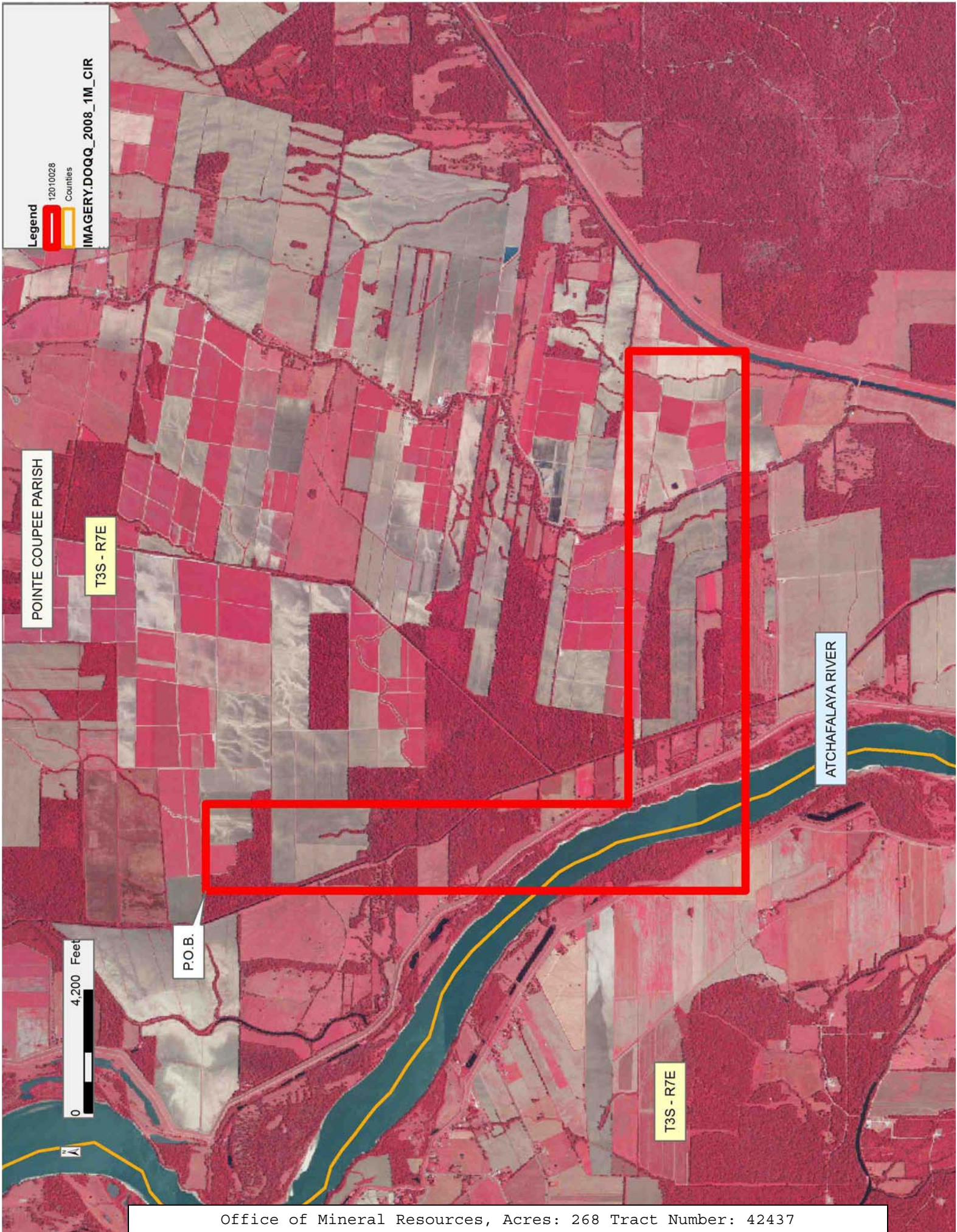
TRACT 42437 - Pointe Coupee and St. Landry Parishes, Louisiana

All of the lands now or formerly constituting the beds and bottoms of all water bodies of every nature and description as to which title is vested in the State of Louisiana, together with all islands arising therein and other lands formed by accretion or by reliction, where allowed by law, excepting tax adjudicated lands, and not presently under mineral lease on January 11, 2012, situated in Pointe Coupee and St. Landry Parishes, Louisiana, and more particularly described as follows: Beginning at a point having Coordinates of X = 1,862,652.07 and Y = 782,763.93; thence East 2,970.71 feet to a point having Coordinates of X = 1,865,622.78 and Y = 782,763.93; thence South 14,466.33 feet to a point having Coordinates of X = 1,865,622.78 and Y = 768,297.60; thence South 89 degrees 59 minutes 38 seconds East 15,509.29 feet to a point having Coordinates of X = 1,881,132.07 and Y = 768,295.93; thence South 4,012.00 feet to a point having Coordinates of X = 1,881,132.07 and Y = 764,283.93; thence West 18,480.00 feet to a point having Coordinates of X = 1,862,652.07 and Y = 764,283.93; thence North 18,480.00 feet to a point of beginning, containing approximately **268 acres**, all as more particularly outlined on a plat on file in the Office of Mineral Resources, Department of Natural Resources. All bearings, distances and coordinates are based on Louisiana Coordinate System of 1927, (North or South Zone), where applicable.

NOTE: The above description of the Tract nominated for lease has been provided and corrected, where required, exclusively by the nomination party. Any mineral lease selected from this Tract and awarded by the Louisiana State Mineral and Energy Board shall be without warranty of any kind, either express, implied, or statutory, including, but not limited to, the implied warranties of merchantability and fitness for a particular purpose. Should the mineral lease awarded by the Louisiana State Mineral and Energy Board be subsequently modified, cancelled or abrogated due to the existence of conflicting leases, operating agreements, private claims or other future obligations or conditions which may affect all or any portion of the leased Tract, it shall not relieve the Lessee of the obligation to pay any bonus due thereon to the Louisiana State Mineral and Energy Board, nor shall the Louisiana State Mineral and Energy Board be obligated to refund any consideration paid by the Lessor prior to such modification, cancellation, or abrogation, including, but not limited to, bonuses, rentals and royalties.

Applicant: JANUS GULF COAST EXPLORATION, LLC

Bidder	Cash Payment	Price/Acre	Rental	Oil	Gas	Other



POINTE COUPEE PARISH

T3S - R7E

P.O.B.

ATCHAFALAYA RIVER

T3S - R7E

TRACT 42438 - Pointe Coupee Parish, Louisiana

All of the lands now or formerly constituting the beds and bottoms of all water bodies of every nature and description as to which title is vested in the State of Louisiana, together with all islands arising therein and other lands formed by accretion or by reliction, where allowed by law, excepting tax adjudicated lands, and not presently under mineral lease on January 11, 2012, situated in Pointe Coupee Parish, Louisiana, and more particularly described as follows: Beginning at a point having Coordinates of X = 1,865,622.78 and Y = 775,297.60; thence East 18,480.00 feet to a point having Coordinates of X = 1,884,102.78 and Y = 775,297.60; thence South 7,000.00 feet to a point having Coordinates of X = 1,884,102.78 and Y = 768,297.60; thence West 18,480.00 feet to a point having Coordinates of X = 1,865,622.78 and Y = 768,297.60; thence North 7,000.00 feet to the point of beginning, containing approximately **12 acres**, all as more particularly outlined on a plat on file in the Office of Mineral Resources, Department of Natural Resources. All bearings, distances and coordinates are based on Louisiana Coordinate System of 1927, (North or South Zone), where applicable.

NOTE: The above description of the Tract nominated for lease has been provided and corrected, where required, exclusively by the nomination party. Any mineral lease selected from this Tract and awarded by the Louisiana State Mineral and Energy Board shall be without warranty of any kind, either express, implied, or statutory, including, but not limited to, the implied warranties of merchantability and fitness for a particular purpose. Should the mineral lease awarded by the Louisiana State Mineral and Energy Board be subsequently modified, cancelled or abrogated due to the existence of conflicting leases, operating agreements, private claims or other future obligations or conditions which may affect all or any portion of the leased Tract, it shall not relieve the Lessee of the obligation to pay any bonus due thereon to the Louisiana State Mineral and Energy Board, nor shall the Louisiana State Mineral and Energy Board be obligated to refund any consideration paid by the Lessor prior to such modification, cancellation, or abrogation, including, but not limited to, bonuses, rentals and royalties.

Applicant: LESLIE M. COOPER

Bidder	Cash Payment	Price/Acre	Rental	Oil	Gas	Other

Legend

12010005

IMAGERY.DOQQ_2008_1M_CIR

0 4,000 Feet

POINTE COUPEE PARISH

T3S - R7E

P.O.B.

BAYOU LATENACHE

T4S - R7E

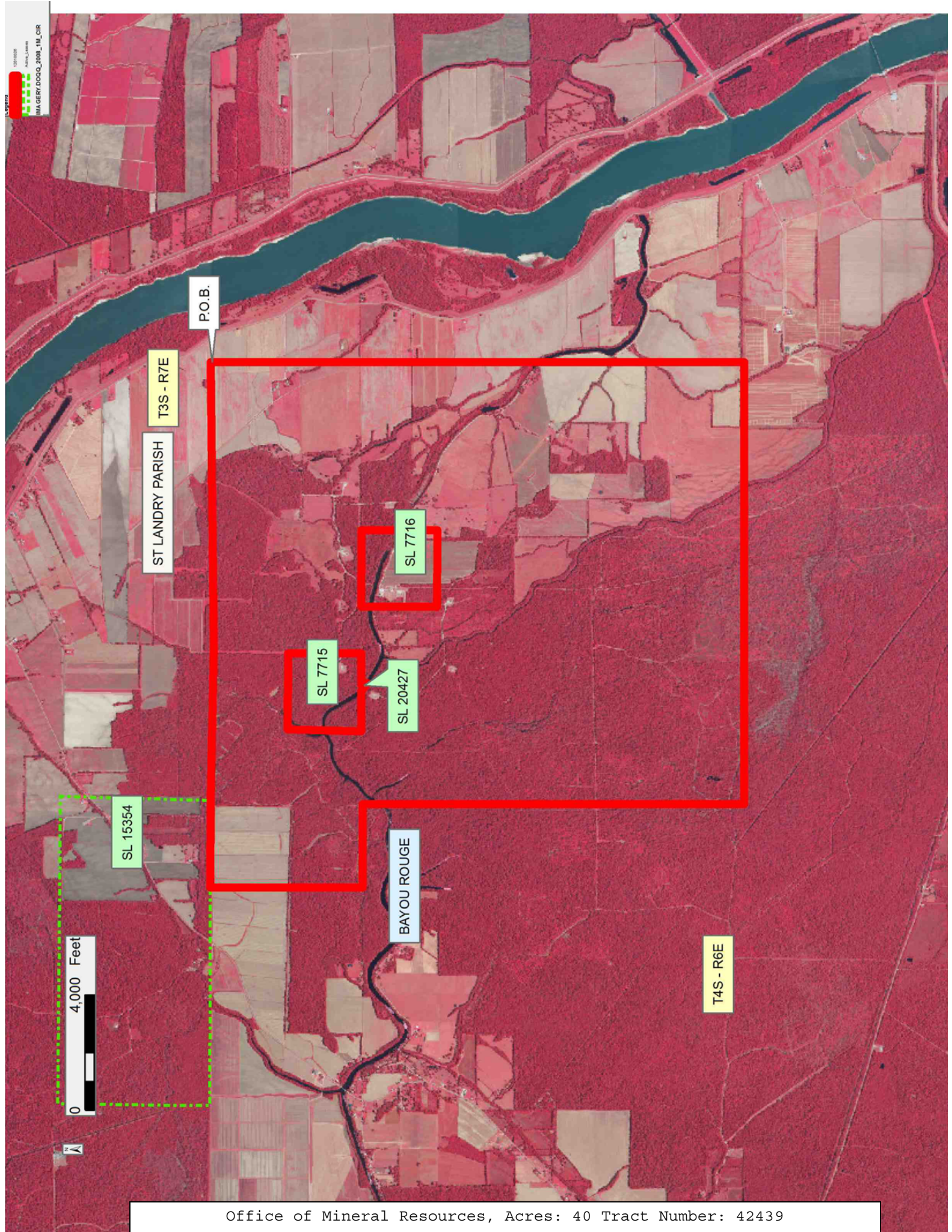
TRACT 42439 - St. Landry Parish, Louisiana

All of the lands now or formerly constituting the beds and bottoms of all water bodies of every nature and description as to which title is vested in the State of Louisiana, together with all islands arising therein and other lands formed by accretion or by reliction, where allowed by law, excepting tax adjudicated lands, and not presently under mineral lease on January 11, 2012, situated in St. Landry Parish, Louisiana, and more particularly described as follows: Beginning at a point having Coordinates of X = 1,862,652.07 and Y = 765,984.00; thence South 18,480.00 feet to a point having Coordinates of X = 1,862,652.07 and Y = 747,504.00; thence West 15,323.07 feet to a point having Coordinates of X = 1,847,329.00 and Y = 747,504.00; thence North 13,210.00 feet to a point having Coordinates of X = 1,847,329.00 and Y = 760,714.00; thence West 2,887.44 feet to a point having Coordinates of X = 1,844,441.56 and Y = 760,714.00; thence Northerly approximately 5,275 feet to a point on the Southern boundary of State Lease 15354, as amended; thence Easterly approximately 3,012 feet along the Southern boundary of said State Lease 15354 to its Southeast corner; thence Easterly approximately 15,198 feet to the point of beginning, **LESS AND EXCEPT** those portions, if any, of State Lease Nos. 15354, 7715, 7716 and 20427 that may lie within the above described tract, containing approximately **40 acres**, all as more particularly outlined on a plat on file in the Office of Mineral Resources, Department of Natural Resources. All bearings, distances and coordinates are based on Louisiana Coordinate System of 1927, (North or South Zone), where applicable.

NOTE: The above description of the Tract nominated for lease has been provided and corrected, where required, exclusively by the nomination party. Any mineral lease selected from this Tract and awarded by the Louisiana State Mineral and Energy Board shall be without warranty of any kind, either express, implied, or statutory, including, but not limited to, the implied warranties of merchantability and fitness for a particular purpose. Should the mineral lease awarded by the Louisiana State Mineral and Energy Board be subsequently modified, cancelled or abrogated due to the existence of conflicting leases, operating agreements, private claims or other future obligations or conditions which may affect all or any portion of the leased Tract, it shall not relieve the Lessee of the obligation to pay any bonus due thereon to the Louisiana State Mineral and Energy Board, nor shall the Louisiana State Mineral and Energy Board be obligated to refund any consideration paid by the Lessor prior to such modification, cancellation, or abrogation, including, but not limited to, bonuses, rentals and royalties.

Applicant: JANUS GULF COAST EXPLORATION, LLC

Bidder	Cash Payment	Price/Acre	Rental	Oil	Gas	Other



TRACT 42440 - Pointe Coupee and St. Landry Parishes, Louisiana

All of the lands now or formerly constituting the beds and bottoms of all water bodies of every nature and description as to which title is vested in the State of Louisiana, together with all islands arising therein and other lands formed by accretion or by reliction, where allowed by law, excepting tax adjudicated lands, and not presently under mineral lease on January 11, 2012, situated in Pointe Coupee and St. Landry Parishes, Louisiana, and more particularly described as follows: Beginning at a point having Coordinates of X = 1,862,652.07 and Y = 764,283.93; thence East 18,480.00 feet to a point having Coordinates of X = 1,881,132.07 and Y = 764,283.93; thence South 18,480.00 feet to a point on the Northern boundary of State Lease No. 15421 having Coordinates of X = 1,881,132.07 and Y = 745,803.93; thence along the Northern boundary of said State Lease No. 15421 the following courses: North 78 degrees 00 minutes 00 seconds West 7,925.44 feet to a point having Coordinates of X = 1,873,379.82 and Y = 747,451.72; South 12 degrees 00 minutes 00 seconds West 647.84 feet to a point having Coordinates of X = 1,873,245.13 and Y = 746,818.03; North 85 degrees 59 minutes 58 seconds West 4,335.71 feet to its Northeast corner having Coordinates of X = 1,868,919.99 and Y = 747,120.51; thence South 00 degrees 00 minutes 01 seconds West 318.18 feet along the Western boundary of said State Lease No. 15421 to a point having Coordinates of X = 1,868,919.99 and Y = 746,802.33; thence West 6,267.91 feet to a point having Coordinates of X = 1,862,652.07 and Y = 746,802.33; thence North 17,481.60 feet to a point of beginning, containing approximately **708 acres**, all as more particularly outlined on a plat on file in the Office of Mineral Resources, Department of Natural Resources. All bearings, distances and coordinates are based on Louisiana Coordinate System of 1927, (North or South Zone), where applicable.

NOTE: The above description of the Tract nominated for lease has been provided and corrected, where required, exclusively by the nomination party. Any mineral lease selected from this Tract and awarded by the Louisiana State Mineral and Energy Board shall be without warranty of any kind, either express, implied, or statutory, including, but not limited to, the implied warranties of merchantability and fitness for a particular purpose. Should the mineral lease awarded by the Louisiana State Mineral and Energy Board be subsequently modified, cancelled or abrogated due to the existence of conflicting leases, operating agreements, private claims or other future obligations or conditions which may affect all or any portion of the leased Tract, it shall not relieve the Lessee of the obligation to pay any bonus due thereon to the Louisiana State Mineral and Energy Board, nor shall the Louisiana State Mineral and Energy Board be obligated to refund any consideration paid by the Lessor prior to such modification, cancellation, or abrogation, including, but not limited to, bonuses, rentals and royalties.

Applicant: JANUS GULF COAST EXPLORATION, LLC

Bidder	Cash Payment	Price/Acre	Rental	Oil	Gas	Other

Legend

- 12010029
- Active_Leases
- Countries

IMAGERY.DOQQ_2008_1M_CIR

POINTE COUPEE PARISH

T3S - R7E

ATCHAFALAYA RIVER

SL 15421

T4S - R7E

P.O.B.

ST LANDRY PARISH



TRACT 42441 - Evangeline Parish, Louisiana

All of the lands now or formerly constituting the beds and bottoms of all water bodies of every nature and description as to which title is vested in the State of Louisiana, together with all islands arising therein and other lands formed by accretion or by reliction, where allowed by law, excepting tax adjudicated lands, and not presently under mineral lease on January 11, 2012, situated in Evangeline Parish, Louisiana, and more particularly described as follows: Beginning at a point having Coordinates of X = 1,610,075.00 and Y = 725,205.00; thence East 18,000.00 feet to a point having Coordinates of X = 1,628,075.00 and Y = 725,205.00; thence South 15,805.00 feet to a point having Coordinates of X = 1,628,075.00 and Y = 709,400.00; thence West 18,000.00 feet to a point having Coordinates of X = 1,610,075.00 and Y = 709,400.00; thence North 15,805.00 feet to the point of beginning, containing approximately **24 acres**, all as more particularly outlined on a plat on file in the Office of Mineral Resources, Department of Natural Resources. All bearings, distances and coordinates are based on Louisiana Coordinate System of 1927, (North or South Zone), where applicable.

NOTE: The above description of the Tract nominated for lease has been provided and corrected, where required, exclusively by the nomination party. Any mineral lease selected from this Tract and awarded by the Louisiana State Mineral and Energy Board shall be without warranty of any kind, either express, implied, or statutory, including, but not limited to, the implied warranties of merchantability and fitness for a particular purpose. Should the mineral lease awarded by the Louisiana State Mineral and Energy Board be subsequently modified, cancelled or abrogated due to the existence of conflicting leases, operating agreements, private claims or other future obligations or conditions which may affect all or any portion of the leased Tract, it shall not relieve the Lessee of the obligation to pay any bonus due thereon to the Louisiana State Mineral and Energy Board, nor shall the Louisiana State Mineral and Energy Board be obligated to refund any consideration paid by the Lessor prior to such modification, cancellation, or abrogation, including, but not limited to, bonuses, rentals and royalties.

Applicant: THEOPHILUS OIL, GAS & LAND SERVICES, LLC

Bidder	Cash Payment	Price/Acre	Rental	Oil	Gas	Other

Legend

12010038

IMAGERY.DOQQ_2008_1M_CIR

EVANGELINE PARISH

T4S - R2W

BAYOU NEZPIQUE

0 3,000 Feet

P.O.B.

T5S - R2W