

TRACT 42442 - Allen and Evangeline Parishes, Louisiana

All of the lands now or formerly constituting the beds and bottoms of all water bodies of every nature and description as to which title is vested in the State of Louisiana, together with all islands arising therein and other lands formed by accretion or by reliction, where allowed by law, excepting tax adjudicated lands, and not presently under mineral lease on January 11, 2012, situated in Allen and Evangeline Parishes, Louisiana, and more particularly described as follows: Beginning at a point having Coordinates of X = 1,601,445.00 and Y = 709,400.00; thence East 18,480.00 feet to a point having Coordinates of X = 1,619,925.00 and Y = 709,400.00; thence South 16,345.00 feet to a point having Coordinates of X = 1,619,925.00 and Y = 693,055.00; thence West 18,480.00 feet to a point having Coordinates of X = 1,601,445.00 and Y = 693,055.00; thence North 16,345.00 feet to the point of beginning, containing approximately **55 acres**, all as more particularly outlined on a plat on file in the Office of Mineral Resources, Department of Natural Resources. All bearings, distances and coordinates are based on Louisiana Coordinate System of 1927, (North or South Zone), where applicable.

NOTE: The above description of the Tract nominated for lease has been provided and corrected, where required, exclusively by the nomination party. Any mineral lease selected from this Tract and awarded by the Louisiana State Mineral and Energy Board shall be without warranty of any kind, either express, implied, or statutory, including, but not limited to, the implied warranties of merchantability and fitness for a particular purpose. Should the mineral lease awarded by the Louisiana State Mineral and Energy Board be subsequently modified, cancelled or abrogated due to the existence of conflicting leases, operating agreements, private claims or other future obligations or conditions which may affect all or any portion of the leased Tract, it shall not relieve the Lessee of the obligation to pay any bonus due thereon to the Louisiana State Mineral and Energy Board, nor shall the Louisiana State Mineral and Energy Board be obligated to refund any consideration paid by the Lessor prior to such modification, cancellation, or abrogation, including, but not limited to, bonuses, rentals and royalties.

Applicant: THEOPHILUS OIL, GAS & LAND SERVICES, LLC

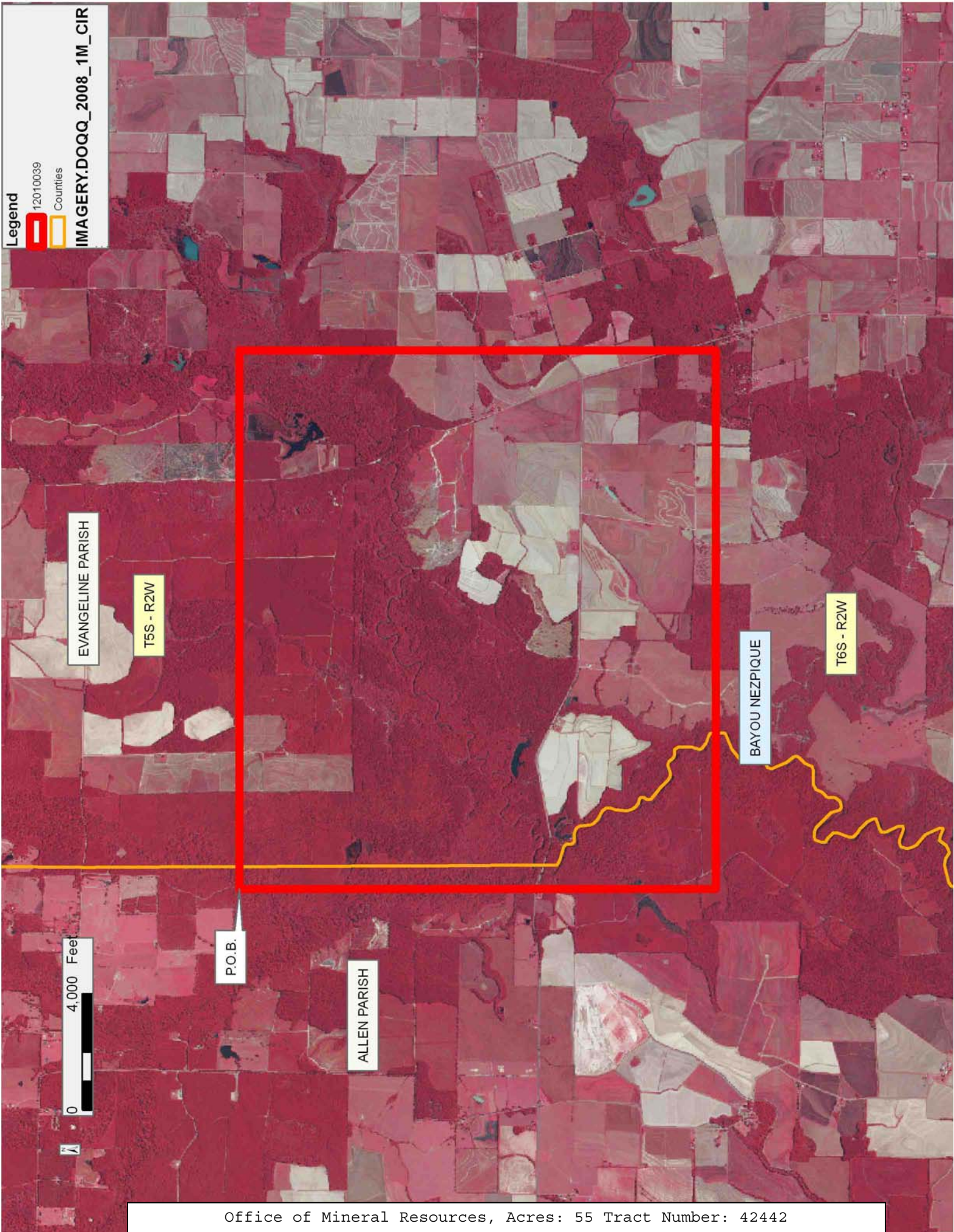
Bidder	Cash Payment	Price/Acre	Rental	Oil	Gas	Other

Legend

12010039

Counties

IMAGERY.DOQQ_2008_1M_CIR



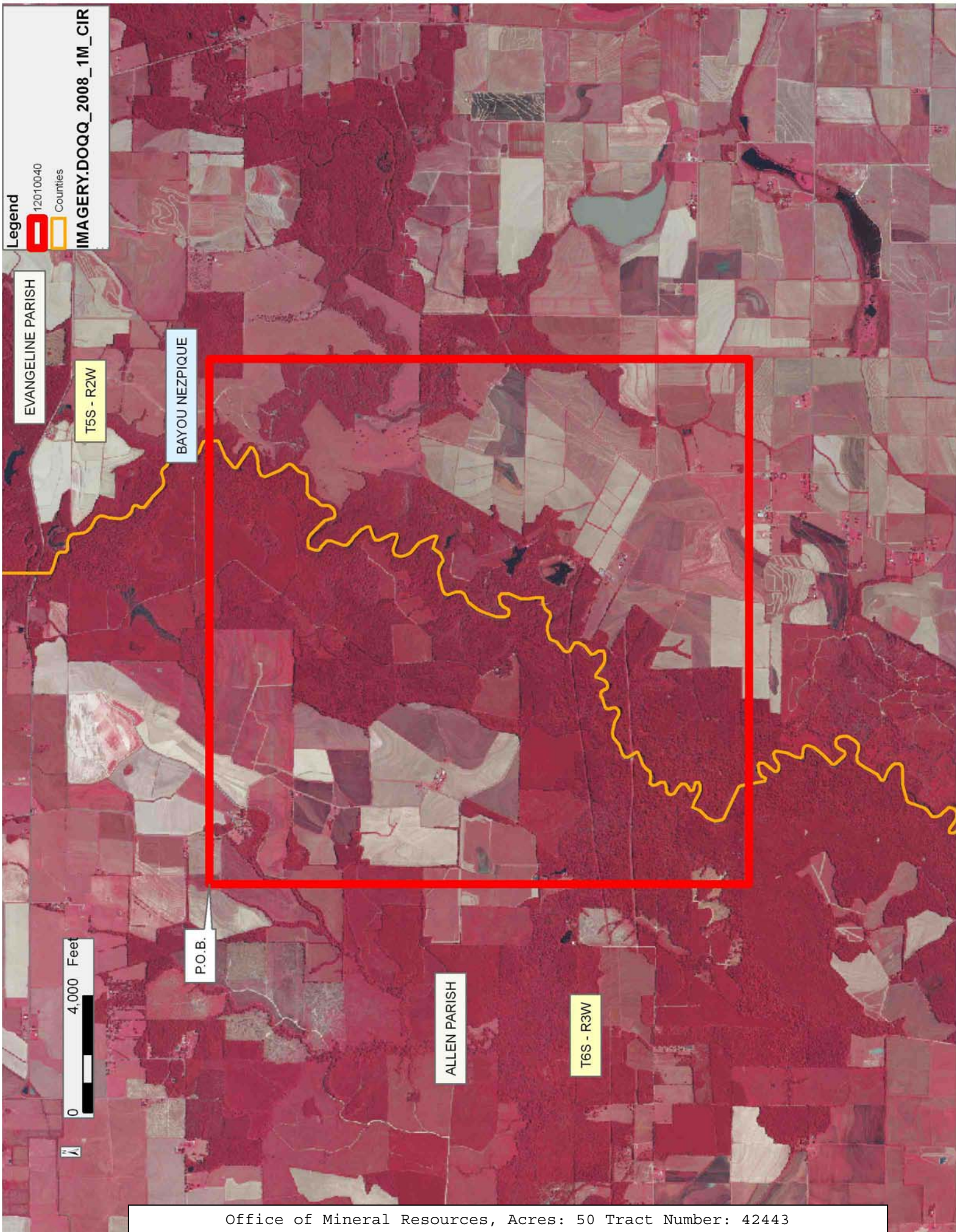
TRACT 42443 - Allen and Evangeline Parishes, Louisiana

All of the lands now or formerly constituting the beds and bottoms of all water bodies of every nature and description as to which title is vested in the State of Louisiana, together with all islands arising therein and other lands formed by accretion or by reliction, where allowed by law, excepting tax adjudicated lands, and not presently under mineral lease on January 11, 2012, situated in Allen and Evangeline Parishes, Louisiana, and more particularly described as follows: Beginning at a point having Coordinates of X = 1,591,605.00 and Y = 693,055.00; thence East 18,000.00 feet to a point having Coordinates of X = 1,609,605.00 and Y = 693,055.00; thence South 18,480.00 feet to a point having Coordinates of X = 1,609,605.00 and Y = 674,575.00; thence West 18,000.00 feet to a point having Coordinates of X = 1,591,605.00 and Y = 674,575.00; thence North 18,480.00 feet to the point of beginning, containing approximately **50 acres**, all as more particularly outlined on a plat on file in the Office of Mineral Resources, Department of Natural Resources. All bearings, distances and coordinates are based on Louisiana Coordinate System of 1927, (North or South Zone), where applicable.

NOTE: The above description of the Tract nominated for lease has been provided and corrected, where required, exclusively by the nomination party. Any mineral lease selected from this Tract and awarded by the Louisiana State Mineral and Energy Board shall be without warranty of any kind, either express, implied, or statutory, including, but not limited to, the implied warranties of merchantability and fitness for a particular purpose. Should the mineral lease awarded by the Louisiana State Mineral and Energy Board be subsequently modified, cancelled or abrogated due to the existence of conflicting leases, operating agreements, private claims or other future obligations or conditions which may affect all or any portion of the leased Tract, it shall not relieve the Lessee of the obligation to pay any bonus due thereon to the Louisiana State Mineral and Energy Board, nor shall the Louisiana State Mineral and Energy Board be obligated to refund any consideration paid by the Lessor prior to such modification, cancellation, or abrogation, including, but not limited to, bonuses, rentals and royalties.

Applicant: THEOPHILUS OIL, GAS & LAND SERVICES, LLC

Bidder	Cash Payment	Price/Acre	Rental	Oil	Gas	Other



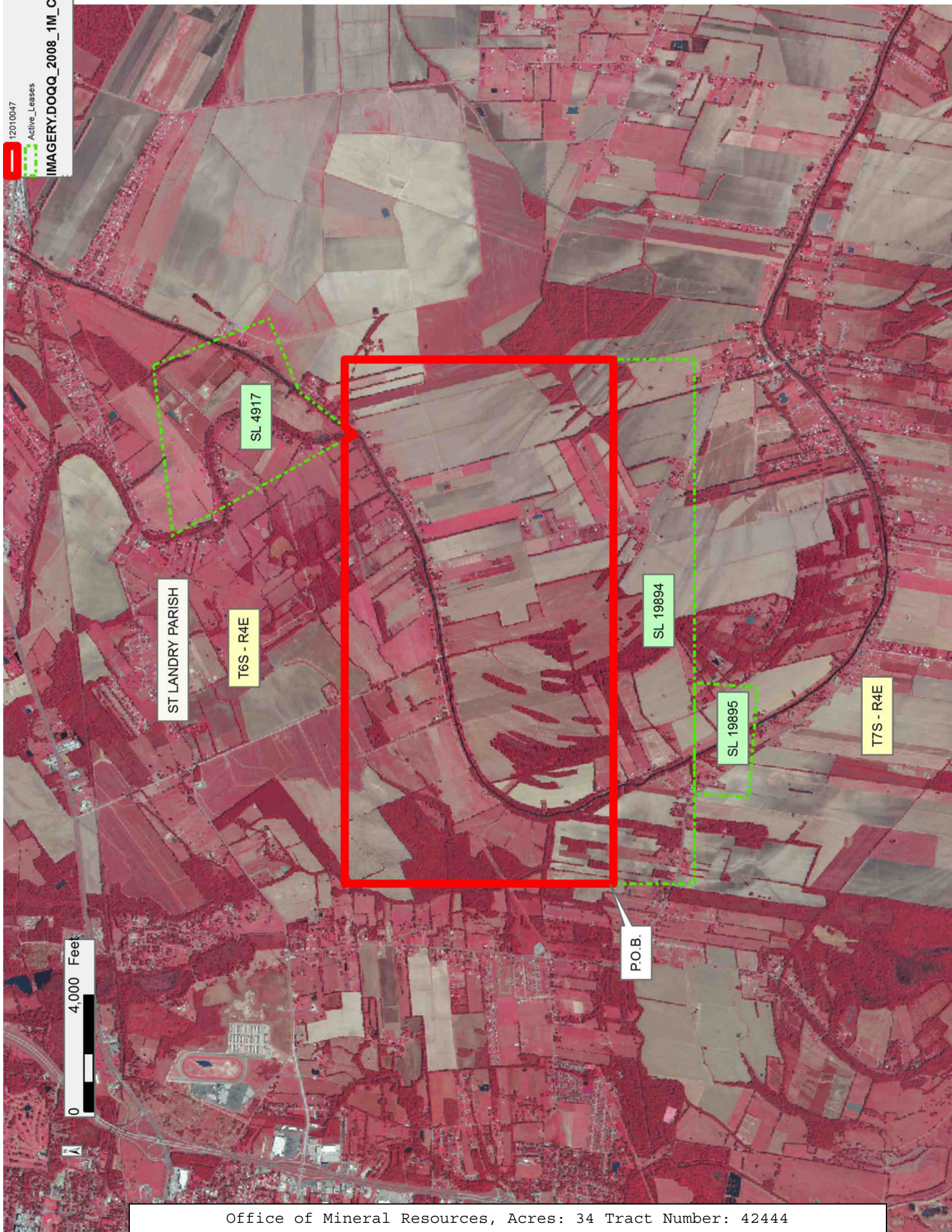
TRACT 42444 - St. Landry Parish, Louisiana

All of the lands now or formerly constituting the beds and bottoms of all water bodies of every nature and description as to which title is vested in the State of Louisiana, together with all islands arising therein and other lands formed by accretion or by reliction, where allowed by law, excepting tax adjudicated lands, and not presently under mineral lease on January 11, 2012, situated in St. Landry Parish, Louisiana, and more particularly described as follows: Beginning at a point being the Northwest corner of State Lease No. 19894, as amended, having Coordinates of X = 1,778,363.30 and Y = 663,413.60; thence North 9225.91 feet to a point having Coordinates of X = 1,778,363.30 and Y = 672,639.51; thence East approximately 15,251 feet to a point on the West boundary of State Lease No. 4917, as amended, having a Coordinate of Y = 672,639.51; thence along the boundary of said State Lease No. 4917 the following: Southeasterly approximately 366 feet to its Southernmost part and Northeasterly approximately 405 feet to a point having Coordinates of X = 179,636.30 and Y = 672,639.51; thence South 9225.91 feet to a point being the Northeast corner of said State Lease No. 19894, having Coordinates of X = 1,796,363.30 and Y = 663,413.60; thence West 18,000.00 feet along the Northern boundary of said State Lease No. 19894, to the point of beginning, **LESS AND EXCEPT** that portion, if any, of State Lease No. 4917, as amended, which may lie within the above described tract, containing approximately **34 acres**, all as more particularly outlined on a plat on file in the Office of Mineral Resources, Department of Natural Resources. All bearings, distances and coordinates are based on Louisiana Coordinate System of 1927, (North or South Zone), where applicable.

NOTE: The above description of the Tract nominated for lease has been provided and corrected, where required, exclusively by the nomination party. Any mineral lease selected from this Tract and awarded by the Louisiana State Mineral and Energy Board shall be without warranty of any kind, either express, implied, or statutory, including, but not limited to, the implied warranties of merchantability and fitness for a particular purpose. Should the mineral lease awarded by the Louisiana State Mineral and Energy Board be subsequently modified, cancelled or abrogated due to the existence of conflicting leases, operating agreements, private claims or other future obligations or conditions which may affect all or any portion of the leased Tract, it shall not relieve the Lessee of the obligation to pay any bonus due thereon to the Louisiana State Mineral and Energy Board, nor shall the Louisiana State Mineral and Energy Board be obligated to refund any consideration paid by the Lessor prior to such modification, cancellation, or abrogation, including, but not limited to, bonuses, rentals and royalties.

Applicant: GULF COAST ENERGY GROUP, LLC

Bidder	Cash Payment	Price/ Acre	Rental	Oil	Gas	Other



TRACT 42445 - Jefferson Davis Parish, Louisiana

All of the lands now or formerly constituting the beds and bottoms of all water bodies of every nature and description as to which title is vested in the State of Louisiana, together with all islands arising therein and other lands formed by accretion or by reliction, where allowed by law, excepting tax adjudicated lands, and not presently under mineral lease on January 11, 2012, situated in Jefferson Davis Parish, Louisiana, and more particularly described as follows: Beginning at a point on the East boundary of State Lease No. 20194 having Coordinates of X = 1,491,875.00 and Y = 635,482.00; thence East 5,035.00 feet to a point having Coordinates of X = 1,496,910.00 and Y = 635,482.00; thence South 2,518.00 feet to a point having Coordinates of X = 1,496,910.00 and Y = 632,964.00; thence West 5,035.00 feet to a point on the East boundary of said State Lease No. 20194 having Coordinates of X = 1,491,875.00 and Y = 632,964.00; thence North 2,518.00 feet along the East boundary of said State Lease No. 20194 to the point of beginning, containing approximately **3 acres**, all as more particularly outlined on a plat on file in the Office of Mineral Resources, Department of Natural Resources. All bearings, distances and coordinates are based on Louisiana Coordinate System of 1927, (North or South Zone), where applicable.

NOTE: The above description of the Tract nominated for lease has been provided and corrected, where required, exclusively by the nomination party. Any mineral lease selected from this Tract and awarded by the Louisiana State Mineral and Energy Board shall be without warranty of any kind, either express, implied, or statutory, including, but not limited to, the implied warranties of merchantability and fitness for a particular purpose. Should the mineral lease awarded by the Louisiana State Mineral and Energy Board be subsequently modified, cancelled or abrogated due to the existence of conflicting leases, operating agreements, private claims or other future obligations or conditions which may affect all or any portion of the leased Tract, it shall not relieve the Lessee of the obligation to pay any bonus due thereon to the Louisiana State Mineral and Energy Board, nor shall the Louisiana State Mineral and Energy Board be obligated to refund any consideration paid by the Lessor prior to such modification, cancellation, or abrogation, including, but not limited to, bonuses, rentals and royalties.

Bidder	Cash Payment	Price/ Acre	Rental	Oil	Gas	Other

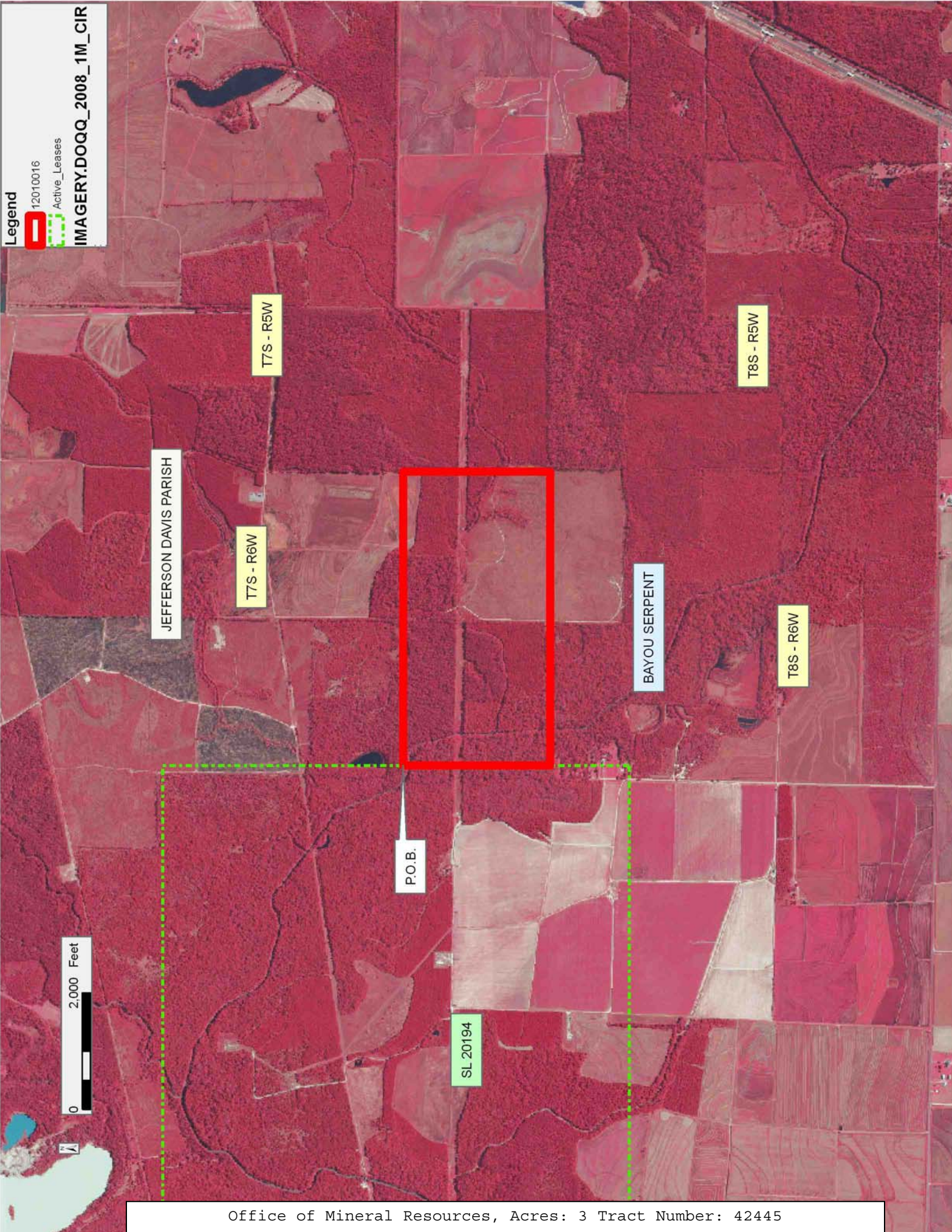
Applicant: ALLEN & KIRMSE, LTD.

Legend

12010016

Active_Leases

IMAGERY.DOQQ_2008_1M_CIR



TRACT 42446 - Jefferson Davis Parish, Louisiana

All of the lands now or formerly constituting the beds and bottoms of all water bodies of every nature and description as to which title is vested in the State of Louisiana, together with all islands arising therein and other lands formed by accretion or by reliction, where allowed by law, excepting tax adjudicated lands, and not presently under mineral lease on January 11, 2012, situated in Jefferson Davis Parish, Louisiana, and more particularly described as follows: Beginning at a point on the East boundary of State Lease No. 20194 having Coordinates of X = 1,491,875.00 and Y = 632,964.00; thence East 5,035.00 feet to a point having Coordinates of X = 1,496,910.00 and Y = 632,964.00; thence South 2,518.00 feet to a point having Coordinates of X = 1,496,910.00 and Y = 630,446.00; thence West 5,035.00 feet to a point having Coordinates of X = 1,491,875.00 and Y = 630,446.00; thence North 1,154.00 feet to the Southeast corner of said State Lease No. 20194 having Coordinates of X = 1,491,875.00 and Y = 631,600.00; thence North 1,364.00 feet along the East boundary of said State Lease No. 20194 to the point of beginning, containing approximately **3 acres**, all as more particularly outlined on a plat on file in the Office of Mineral Resources, Department of Natural Resources. All bearings, distances and coordinates are based on Louisiana Coordinate System of 1927, (North or South Zone), where applicable.

NOTE: The above description of the Tract nominated for lease has been provided and corrected, where required, exclusively by the nomination party. Any mineral lease selected from this Tract and awarded by the Louisiana State Mineral and Energy Board shall be without warranty of any kind, either express, implied, or statutory, including, but not limited to, the implied warranties of merchantability and fitness for a particular purpose. Should the mineral lease awarded by the Louisiana State Mineral and Energy Board be subsequently modified, cancelled or abrogated due to the existence of conflicting leases, operating agreements, private claims or other future obligations or conditions which may affect all or any portion of the leased Tract, it shall not relieve the Lessee of the obligation to pay any bonus due thereon to the Louisiana State Mineral and Energy Board, nor shall the Louisiana State Mineral and Energy Board be obligated to refund any consideration paid by the Lessor prior to such modification, cancellation, or abrogation, including, but not limited to, bonuses, rentals and royalties.

Applicant: ALLEN & KIRMSE, LTD.

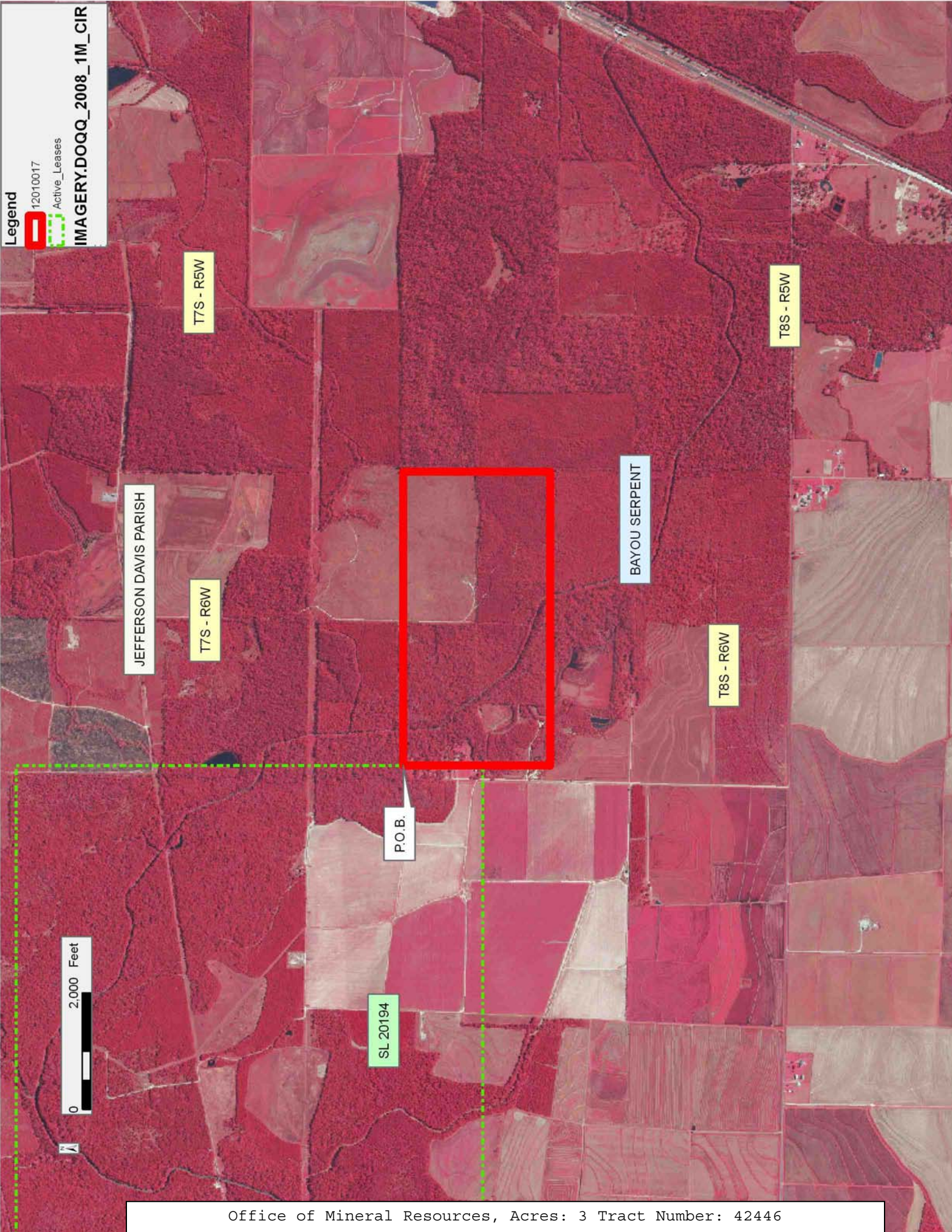
Bidder	Cash Payment	Price/ Acre	Rental	Oil	Gas	Other

Legend

12010017

Active_Leases

IMAGERY.DOQQ_2008_1M_CIR



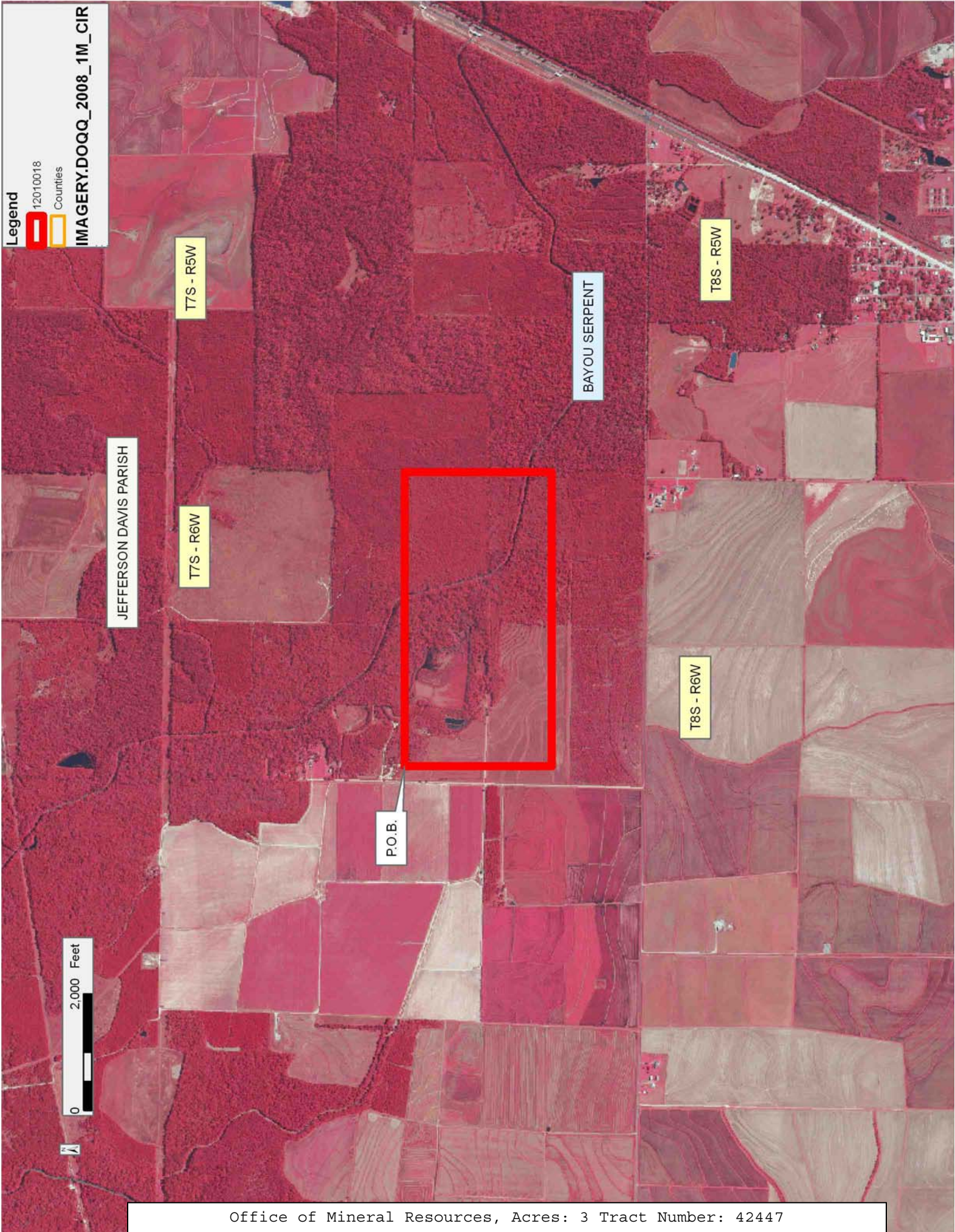
TRACT 42447 - Jefferson Davis Parish, Louisiana

All of the lands now or formerly constituting the beds and bottoms of all water bodies of every nature and description as to which title is vested in the State of Louisiana, together with all islands arising therein and other lands formed by accretion or by reliction, where allowed by law, excepting tax adjudicated lands, and not presently under mineral lease on January 11, 2012, situated in Jefferson Davis Parish, Louisiana, and more particularly described as follows: Beginning at a point having Coordinates of X = 1,491,875.00 and Y = 630,446.00; thence East 5,035.00 feet to a point having Coordinates of X = 1,496,910.00 and Y = 630,446.00; thence South 2,518.00 feet to a point having Coordinates of X = 1,496,910.00 and Y = 627,928.00; thence West 5,035.00 feet to a point having Coordinates of X = 1,491,875.00 and Y = 627,928.00; thence North 2,518.00 feet to the point of beginning, containing approximately **3 acres**, all as more particularly outlined on a plat on file in the Office of Mineral Resources, Department of Natural Resources. All bearings, distances and coordinates are based on Louisiana Coordinate System of 1927, (North or South Zone), where applicable.

NOTE: The above description of the Tract nominated for lease has been provided and corrected, where required, exclusively by the nomination party. Any mineral lease selected from this Tract and awarded by the Louisiana State Mineral and Energy Board shall be without warranty of any kind, either express, implied, or statutory, including, but not limited to, the implied warranties of merchantability and fitness for a particular purpose. Should the mineral lease awarded by the Louisiana State Mineral and Energy Board be subsequently modified, cancelled or abrogated due to the existence of conflicting leases, operating agreements, private claims or other future obligations or conditions which may affect all or any portion of the leased Tract, it shall not relieve the Lessee of the obligation to pay any bonus due thereon to the Louisiana State Mineral and Energy Board, nor shall the Louisiana State Mineral and Energy Board be obligated to refund any consideration paid by the Lessor prior to such modification, cancellation, or abrogation, including, but not limited to, bonuses, rentals and royalties.

Applicant: ALLEN & KIRMSE, LTD.

Bidder	Cash Payment	Price/ Acre	Rental	Oil	Gas	Other



TRACT 42448 - St. Martin Parish, Louisiana

All of the lands now or formerly constituting the beds and bottoms of all water bodies of every nature and description as to which title is vested in the State of Louisiana, together with all islands arising therein and other lands formed by accretion or by reliction, where allowed by law, excepting tax adjudicated lands, and not presently under mineral lease on January 11, 2012, situated in St. Martin Parish, Louisiana, and more particularly described as follows: Beginning at a point having Coordinates of X = 1,867,850.00 and Y = 620,450.00; thence East 15,840.00 feet to a point having Coordinates of X = 1,883,690.00 and Y = 620,450.00; thence South 13,200.00 feet to a point having Coordinates of X = 1,883,690.00 and Y = 607,250.00; thence West 15,840.00 feet to a point having Coordinates of X = 1,867,850.00 and Y = 607,250.00; thence North 13,200.00 feet to the point of beginning, (This tract includes only waterbottoms claimed and owned by the state and specifically excludes any land which the state may claim or own and to which the mineral rights are vested in the state), containing approximately **721 acres**, all as more particularly outlined on a plat on file in the Office of Mineral Resources, Department of Natural Resources. All bearings, distances and coordinates are based on Louisiana Coordinate System of 1927, (North or South Zone), where applicable.

NOTE: The above description of the Tract nominated for lease has been provided and corrected, where required, exclusively by the nomination party. Any mineral lease selected from this Tract and awarded by the Louisiana State Mineral and Energy Board shall be without warranty of any kind, either express, implied, or statutory, including, but not limited to, the implied warranties of merchantability and fitness for a particular purpose. Should the mineral lease awarded by the Louisiana State Mineral and Energy Board be subsequently modified, cancelled or abrogated due to the existence of conflicting leases, operating agreements, private claims or other future obligations or conditions which may affect all or any portion of the leased Tract, it shall not relieve the Lessee of the obligation to pay any bonus due thereon to the Louisiana State Mineral and Energy Board, nor shall the Louisiana State Mineral and Energy Board be obligated to refund any consideration paid by the Lessor prior to such modification, cancellation, or abrogation, including, but not limited to, bonuses, rentals and royalties.

NOTE: This acreage is entirely within the boundary of the Atchafalaya Basin Legal Area.

Applicant: THEOPHILUS OIL, GAS & LAND SERVICES, LLC

Bidder	Cash Payment	Price/ Acre	Rental	Oil	Gas	Other

ST MARTIN PARISH

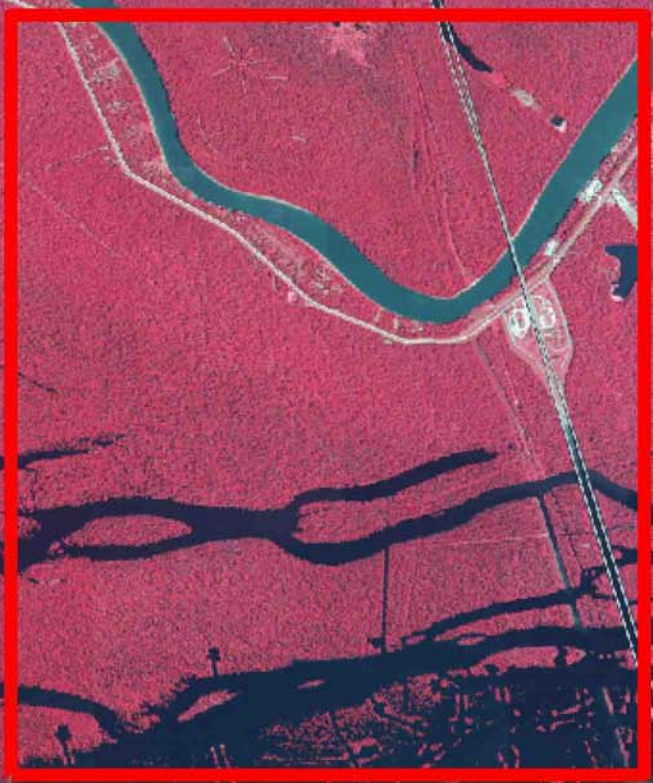
T8S - R7E

HENDERSON LAKE

P.O.B.

T8S - R8E

ATCHAFALAYA RIVER



TRACT 42449 - St. Martin Parish, Louisiana

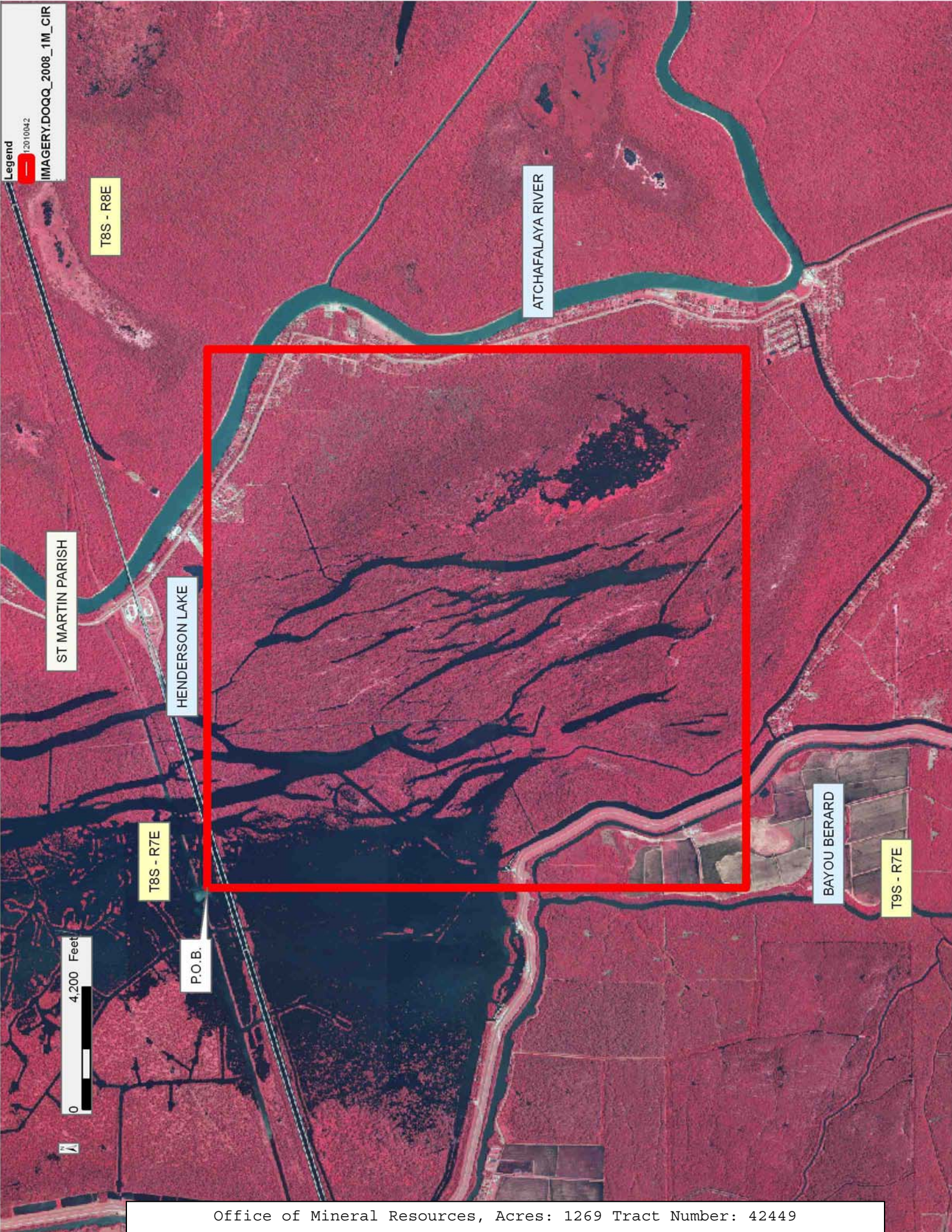
All of the lands now or formerly constituting the beds and bottoms of all water bodies of every nature and description as to which title is vested in the State of Louisiana, together with all islands arising therein and other lands formed by accretion or by reliction, where allowed by law, excepting tax adjudicated lands, and not presently under mineral lease on January 11, 2012, situated in St. Martin Parish, Louisiana, and more particularly described as follows: Beginning at a point having Coordinates of X = 1,867,850.00 and Y = 607,250.00; thence East 18,480.00 feet to a point having Coordinates of X = 1,886,330.00 and Y = 607,250.00; thence South 18,480.00 feet to a point having Coordinates of X = 1,886,330.00 and Y = 588,770.00; thence West 18,480.00 feet to a point having Coordinates of X = 1,867,850.00 and Y = 588,770.00; thence North 18,480.00 feet to the point of beginning, (This tract includes only waterbottoms claimed and owned by the state and specifically excludes any land which the state may claim or own and to which the mineral rights are vested in the state), containing approximately **1,269 acres**, all as more particularly outlined on a plat on file in the Office of Mineral Resources, Department of Natural Resources. All bearings, distances and coordinates are based on Louisiana Coordinate System of 1927, (North or South Zone), where applicable.

NOTE: The above description of the Tract nominated for lease has been provided and corrected, where required, exclusively by the nomination party. Any mineral lease selected from this Tract and awarded by the Louisiana State Mineral and Energy Board shall be without warranty of any kind, either express, implied, or statutory, including, but not limited to, the implied warranties of merchantability and fitness for a particular purpose. Should the mineral lease awarded by the Louisiana State Mineral and Energy Board be subsequently modified, cancelled or abrogated due to the existence of conflicting leases, operating agreements, private claims or other future obligations or conditions which may affect all or any portion of the leased Tract, it shall not relieve the Lessee of the obligation to pay any bonus due thereon to the Louisiana State Mineral and Energy Board, nor shall the Louisiana State Mineral and Energy Board be obligated to refund any consideration paid by the Lessor prior to such modification, cancellation, or abrogation, including, but not limited to, bonuses, rentals and royalties.

NOTE: This acreage is entirely within the boundary of the Atchafalaya Basin Legal Area.

Applicant: THEOPHILUS OIL, GAS & LAND SERVICES, LLC

Bidder	Cash Payment	Price/ Acre	Rental	Oil	Gas	Other



TRACT 42450 - St. Martin Parish, Louisiana

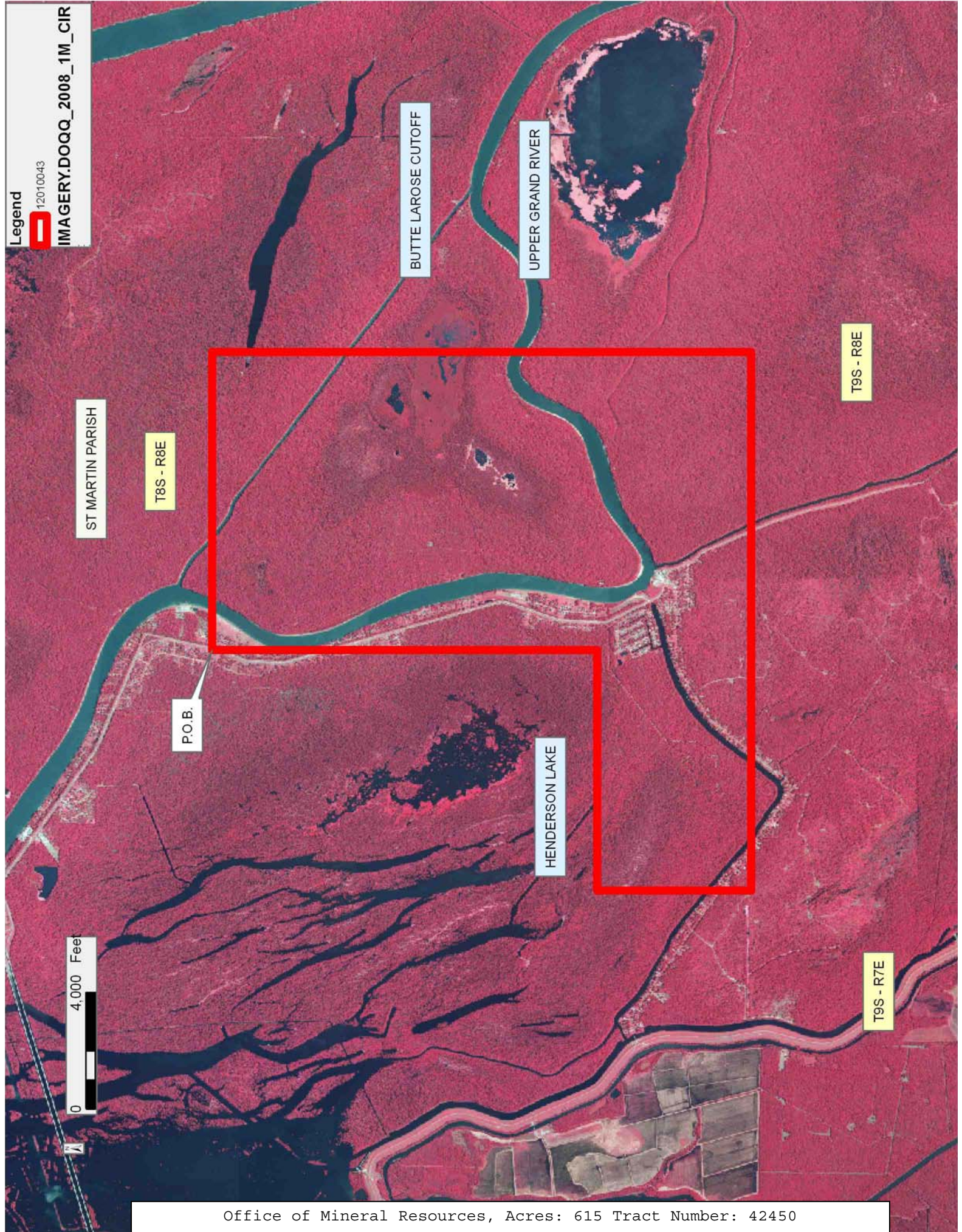
All of the lands now or formerly constituting the beds and bottoms of all water bodies of every nature and description as to which title is vested in the State of Louisiana, together with all islands arising therein and other lands formed by accretion or by reliction, where allowed by law, excepting tax adjudicated lands, and not presently under mineral lease on January 11, 2012, situated in St. Martin Parish, Louisiana, and more particularly described as follows: Beginning at a point having Coordinates of X = 1,886,330.00 and Y = 601,970.00; thence East 10,225.00 feet to a point having Coordinates of X = 1,896,555.00 and Y = 601,970.00; thence South 18,480.00 feet to a point having Coordinates of X = 1,896,555.00 and Y = 583,490.00; thence West 18,480.00 feet to a point having Coordinates of X = 1,878,075.00 and Y = 583,490.00; thence North 5,280.00 feet to a point having Coordinates of X = 1,878,075.00 and Y = 588,770.00; thence East 8,255.00 feet to a point having Coordinates of X = 1,886,330.00 and Y = 588,770.00; thence North 13,200.00 feet to the point of beginning, (This tract includes only waterbottoms claimed and owned by the state and specifically excludes any land which the state may claim or own and to which the mineral rights are vested in the state), containing approximately **615 acres**, all as more particularly outlined on a plat on file in the Office of Mineral Resources, Department of Natural Resources. All bearings, distances and coordinates are based on Louisiana Coordinate System of 1927, (North or South Zone), where applicable.

NOTE: The above description of the Tract nominated for lease has been provided and corrected, where required, exclusively by the nomination party. Any mineral lease selected from this Tract and awarded by the Louisiana State Mineral and Energy Board shall be without warranty of any kind, either express, implied, or statutory, including, but not limited to, the implied warranties of merchantability and fitness for a particular purpose. Should the mineral lease awarded by the Louisiana State Mineral and Energy Board be subsequently modified, cancelled or abrogated due to the existence of conflicting leases, operating agreements, private claims or other future obligations or conditions which may affect all or any portion of the leased Tract, it shall not relieve the Lessee of the obligation to pay any bonus due thereon to the Louisiana State Mineral and Energy Board, nor shall the Louisiana State Mineral and Energy Board be obligated to refund any consideration paid by the Lessor prior to such modification, cancellation, or abrogation, including, but not limited to, bonuses, rentals and royalties.

NOTE: This acreage is entirely within the boundary of the Atchafalaya Basin Legal Area.

Applicant: THEOPHILUS OIL, GAS & LAND SERVICES, LLC

Bidder	Cash Payment	Price/ Acre	Rental	Oil	Gas	Other



TRACT 42451 - Iberia Parish, Louisiana

All of the lands now or formerly constituting the beds and bottoms of all water bodies of every nature and description as to which title is vested in the State of Louisiana, together with all islands arising therein and other lands formed by accretion or by reliction, where allowed by law, excepting tax adjudicated lands, and not presently under mineral lease on January 11, 2012, situated in Iberia Parish, Louisiana, and more particularly described as follows: Beginning at a point having Coordinates of X = 1,838,312.00 and Y = 414,752.00; thence North 7,528.00 feet to a point having Coordinates of X = 1,838,312.00 and Y = 422,280.00; thence East approximately 2,485 feet to a point on the Western boundary of State Lease No. 500, as amended, having a Coordinate of Y = 422,280.00; thence along the boundary of said State Lease No. 500 the following courses: Southerly approximately 2,545 feet and Easterly approximately 2,230 feet to the Northwest corner of State Lease No. 20539; thence along the boundary of said State Lease No. 20539 the following courses: South 25 degrees 41 minutes 49 seconds West approximately 1,130 feet and South 37 degrees 59 minutes 49 seconds East 647.17 feet to its Southernmost corner, also being a point on the Western boundary of State Lease No. 743, as amended, having Coordinates of X = 1,842,927.41 and Y = 418,174.00; thence along the boundary of said State Lease No. 743 the following courses: South 13 degrees 07 minutes 18 seconds West 1,680.91 feet and South 02 degrees 14 minutes 37 seconds East 1,786.35 feet to a point having Coordinates of X = 1,842,615.74 and Y = 414,752.00; thence West 4,303.74 feet to the point of beginning, **LESS AND EXCEPT** that portion, if any, of State Lease No. 500, as amended, and State Lease No. 20539 which may lie within the above described tract, containing approximately **644 acres**, all as more particularly outlined on a plat on file in the Office of Mineral Resources, Department of Natural Resources. All bearings, distances and coordinates are based on Louisiana Coordinate System of 1927, (North or South Zone), where applicable.

NOTE: The above description of the Tract nominated for lease has been provided and corrected, where required, exclusively by the nomination party. Any mineral lease selected from this Tract and awarded by the Louisiana State Mineral and Energy Board shall be without warranty of any kind, either express, implied, or statutory, including, but not limited to, the implied warranties of merchantability and fitness for a particular purpose. Should the mineral lease awarded by the Louisiana State Mineral and Energy Board be subsequently modified, cancelled or abrogated due to the existence of conflicting leases, operating agreements, private claims or other future obligations or conditions which may affect all or any portion of the leased Tract, it shall not relieve the Lessee of the obligation to pay any bonus due thereon to the Louisiana State Mineral and Energy Board, nor shall the Louisiana State Mineral and Energy Board be obligated to refund any consideration paid by the Lessor prior to such modification, cancellation, or abrogation, including, but not limited to, bonuses, rentals and royalties.

NOTE: The State of Louisiana does hereby reserve, and this lease shall be subject to, the imprescriptible right of surface use in the nature of a servitude in favor of the Department of Natural Resources, including its Offices and Commissions, for the sole purpose of implementing, constructing, servicing and maintaining approved coastal zone management and/or restoration projects. Utilization of any and all rights derived under this lease by the mineral lessee, its agents, successors or assigns, shall not interfere with nor hinder the reasonable surface use by the Department of Natural Resources, its Offices or Commissions, as herein above reserved.

NOTE: This tract is located in an area designated by the Louisiana Legislature or the Wildlife and Fisheries Commission as a Public Oyster Seed Ground, Reservation, or area of Calcasieu or Sabine Lake. Proposed projects occurring in these areas will be evaluated on a case by case basis by Louisiana Department of Wildlife & Fisheries. Modifications to proposed project features including, but not limited to, access routes, well sites, flowlines, and appurtenant structures maybe required by the Louisiana Department of Wildlife and Fisheries. In addition, compensatory mitigation will be required to offset unavoidable habitat impacts.

Applicant: KARE-SUE ENERGY, INC.

Bidder	Cash Payment	Price/ Acre	Rental	Oil	Gas	Other

