

TRACT 42452 - St. Martin Parish, Louisiana

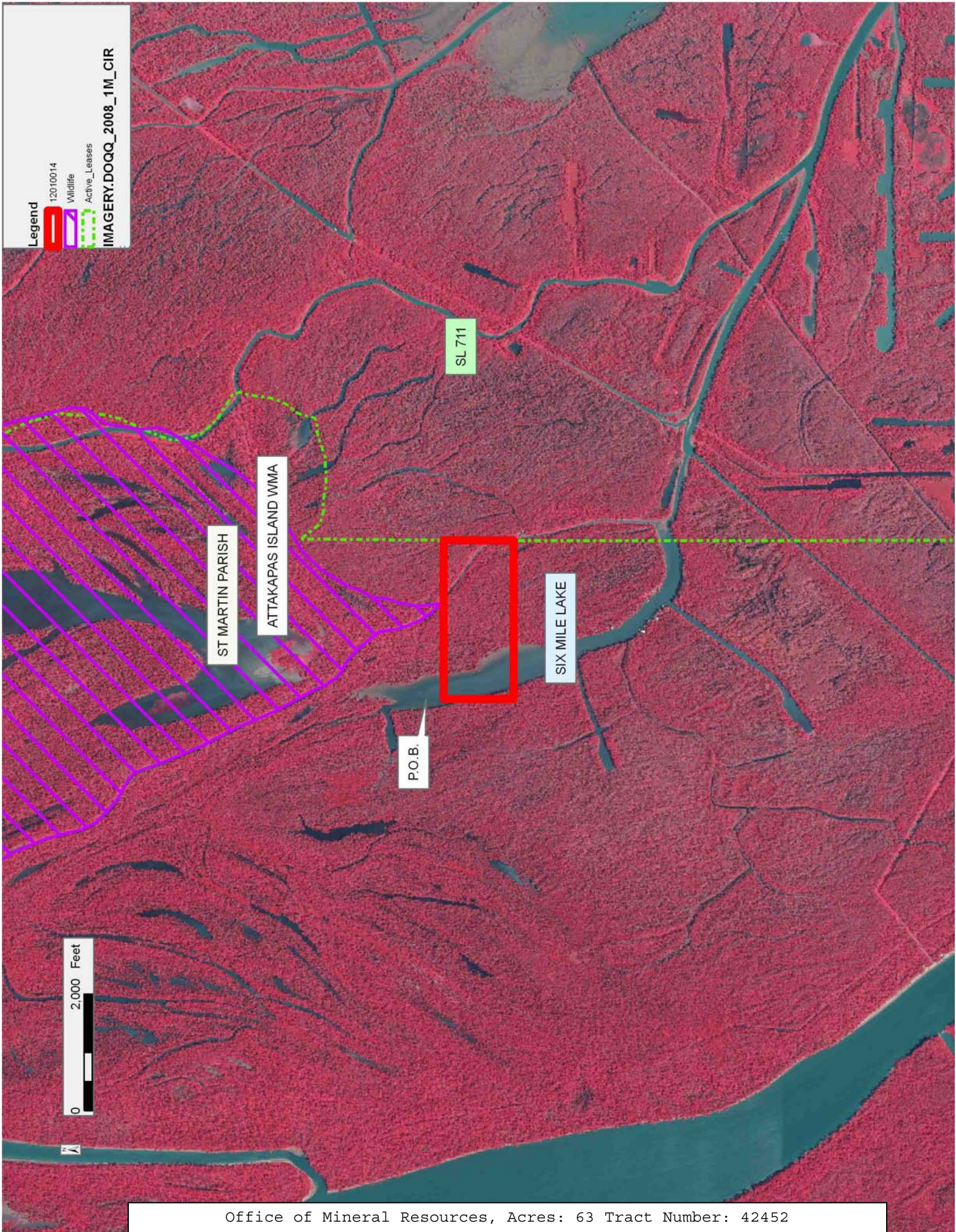
All of the lands now or formerly constituting the beds and bottoms of all water bodies of every nature and description as to which title is vested in the State of Louisiana, together with all islands arising therein and other lands formed by accretion or by reliction, where allowed by law, excepting tax adjudicated lands, and not presently under mineral lease on January 11, 2012, situated in St. Martin Parish, Louisiana, and more particularly described as follows: Beginning at a point having Coordinates of X = 1,995,000.00 and Y = 418,600.00; thence Easterly approximately 2,728 feet to a point on the Western boundary of State Lease No. 711 having a Coordinate of Y = 418,600.00; thence Southerly approximately 1,200 feet to a point of intersection with an East West line having a Coordinate of Y = 417,400.00; thence Westerly approximately 2,719 feet to a point having Coordinates of X = 1,995,000.00 and Y = 417,400.00; thence North 1,200.00 feet to the Point of Beginning, (This tract includes only waterbottoms claimed and owned by the state and specifically excludes any land which the state may claim or own and to which the mineral rights are vested in the state), **LESS AND EXCEPT** that portion, if any of State Lease No. 711 that may fall within the above described tract containing approximately **63 acres**, all as more particularly outlined on a plat on file in the Office of Mineral Resources, Department of Natural Resources. All bearings, distances and coordinates are based on Louisiana Coordinate System of 1927, (North or South Zone), where applicable.

NOTE: The above description of the Tract nominated for lease has been provided and corrected, where required, exclusively by the nomination party. Any mineral lease selected from this Tract and awarded by the Louisiana State Mineral and Energy Board shall be without warranty of any kind, either express, implied, or statutory, including, but not limited to, the implied warranties of merchantability and fitness for a particular purpose. Should the mineral lease awarded by the Louisiana State Mineral and Energy Board be subsequently modified, cancelled or abrogated due to the existence of conflicting leases, operating agreements, private claims or other future obligations or conditions which may affect all or any portion of the leased Tract, it shall not relieve the Lessee of the obligation to pay any bonus due thereon to the Louisiana State Mineral and Energy Board, nor shall the Louisiana State Mineral and Energy Board be obligated to refund any consideration paid by the Lessor prior to such modification, cancellation, or abrogation, including, but not limited to, bonuses, rentals and royalties.

NOTE: This acreage is entirely within the boundary of the Atchafalaya Basin Area.

Applicant: LCA PETROLEUM CO.

Bidder	Cash Payment	Price/ Acre	Rental	Oil	Gas	Other



TRACT 42453 - St. Martin Parish, Louisiana

All of the lands now or formerly constituting the beds and bottoms of all water bodies of every nature and description as to which title is vested in the State of Louisiana, together with all islands arising therein and other lands formed by accretion or by reliction, where allowed by law, excepting tax adjudicated lands, and not presently under mineral lease on January 11, 2012, situated in St. Martin Parish, Louisiana, and more particularly described as follows: Beginning at a point having Coordinates of X = 1,995,000.00 and Y = 417,400.00; thence Easterly approximately 2,719 feet to a point on the Western boundary of State Lease No. 711 having a Coordinate of Y = 417,400.00; thence Southerly approximately 1,500 feet to a point of intersection with an East West line having a Coordinate of Y = 415,900.00; thence Westerly approximately 2,717 feet to a point having Coordinates of X = 1,995,000.00 and Y = 415,900.00; thence North 1,500.00 feet to the Point of Beginning, **LESS AND EXCEPT** that portion, if any of State Lease No. 711 that may fall within the above described tract containing approximately **34 acres**, all as more particularly outlined on a plat on file in the Office of Mineral Resources, Department of Natural Resources. All bearings, distances and coordinates are based on Louisiana Coordinate System of 1927, (North or South Zone), where applicable.

NOTE: The above description of the Tract nominated for lease has been provided and corrected, where required, exclusively by the nomination party. Any mineral lease selected from this Tract and awarded by the Louisiana State Mineral and Energy Board shall be without warranty of any kind, either express, implied, or statutory, including, but not limited to, the implied warranties of merchantability and fitness for a particular purpose. Should the mineral lease awarded by the Louisiana State Mineral and Energy Board be subsequently modified, cancelled or abrogated due to the existence of conflicting leases, operating agreements, private claims or other future obligations or conditions which may affect all or any portion of the leased Tract, it shall not relieve the Lessee of the obligation to pay any bonus due thereon to the Louisiana State Mineral and Energy Board, nor shall the Louisiana State Mineral and Energy Board be obligated to refund any consideration paid by the Lessor prior to such modification, cancellation, or abrogation, including, but not limited to, bonuses, rentals and royalties.

NOTE: This acreage is entirely within the boundary of the Atchafalaya Basin Area.

Applicant: LCA PETROLEUM CO.

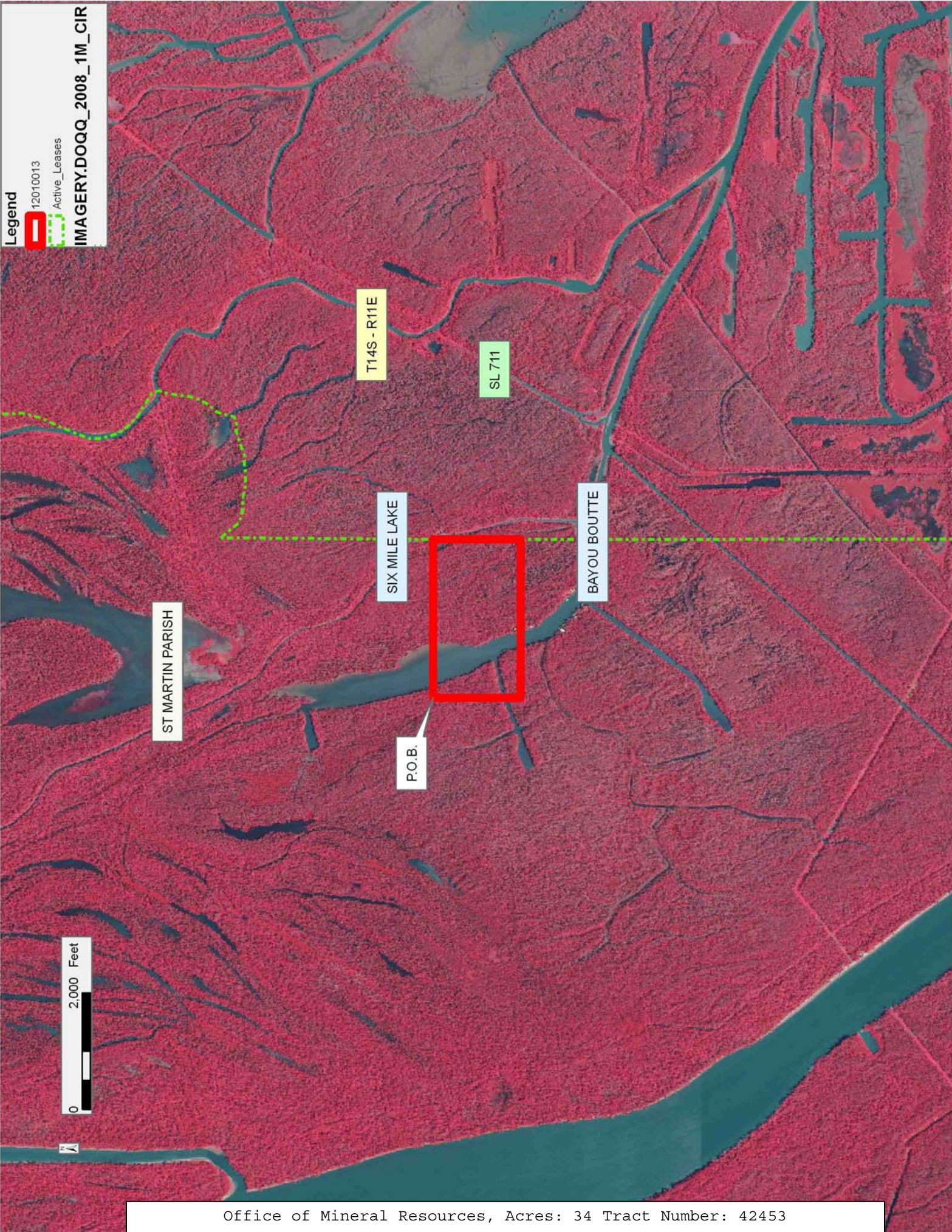
Bidder	Cash Payment	Price/ Acre	Rental	Oil	Gas	Other

Legend

12010013

Active_Leases

IMAGERY.DOQQ_2008_1M_CIR



TRACT 42454 - St. Martin Parish, Louisiana

All of the lands now or formerly constituting the beds and bottoms of all water bodies of every nature and description as to which title is vested in the State of Louisiana, together with all islands arising therein and other lands formed by accretion or by reliction, where allowed by law, excepting tax adjudicated lands, and not presently under mineral lease on January 11, 2012, situated in St. Martin Parish, Louisiana, and more particularly described as follows: Beginning at a point having Coordinates of X = 1,995,000.00 and Y = 415,900.00; thence Easterly approximately 2,717 feet to a point on the Western boundary of State Lease No. 711 having a Coordinate of Y = 415,900.00; thence Southerly approximately 1,500 feet to a point of intersection with an East West line having a Coordinate of Y = 414,400.00; thence Westerly approximately 2,719 feet to a point having Coordinates of X = 1,995,000.00 and Y = 414,400.00; thence North 1,500.00 feet to the Point of Beginning, (This tract includes only waterbottoms claimed and owned by the state and specifically excludes any land which the state may claim or own and to which the mineral rights are vested in the state), **LESS AND EXCEPT** that portion, if any of State Lease No. 711 that may fall within the above described tract containing approximately **16 acres**, all as more particularly outlined on a plat on file in the Office of Mineral Resources, Department of Natural Resources. All bearings, distances and coordinates are based on Louisiana Coordinate System of 1927, (North or South Zone), where applicable.

NOTE: The above description of the Tract nominated for lease has been provided and corrected, where required, exclusively by the nomination party. Any mineral lease selected from this Tract and awarded by the Louisiana State Mineral and Energy Board shall be without warranty of any kind, either express, implied, or statutory, including, but not limited to, the implied warranties of merchantability and fitness for a particular purpose. Should the mineral lease awarded by the Louisiana State Mineral and Energy Board be subsequently modified, cancelled or abrogated due to the existence of conflicting leases, operating agreements, private claims or other future obligations or conditions which may affect all or any portion of the leased Tract, it shall not relieve the Lessee of the obligation to pay any bonus due thereon to the Louisiana State Mineral and Energy Board, nor shall the Louisiana State Mineral and Energy Board be obligated to refund any consideration paid by the Lessor prior to such modification, cancellation, or abrogation, including, but not limited to, bonuses, rentals and royalties.

NOTE: This acreage is entirely within the boundary of the Atchafalaya Basin Area.

Applicant: LCA PETROLEUM CO.

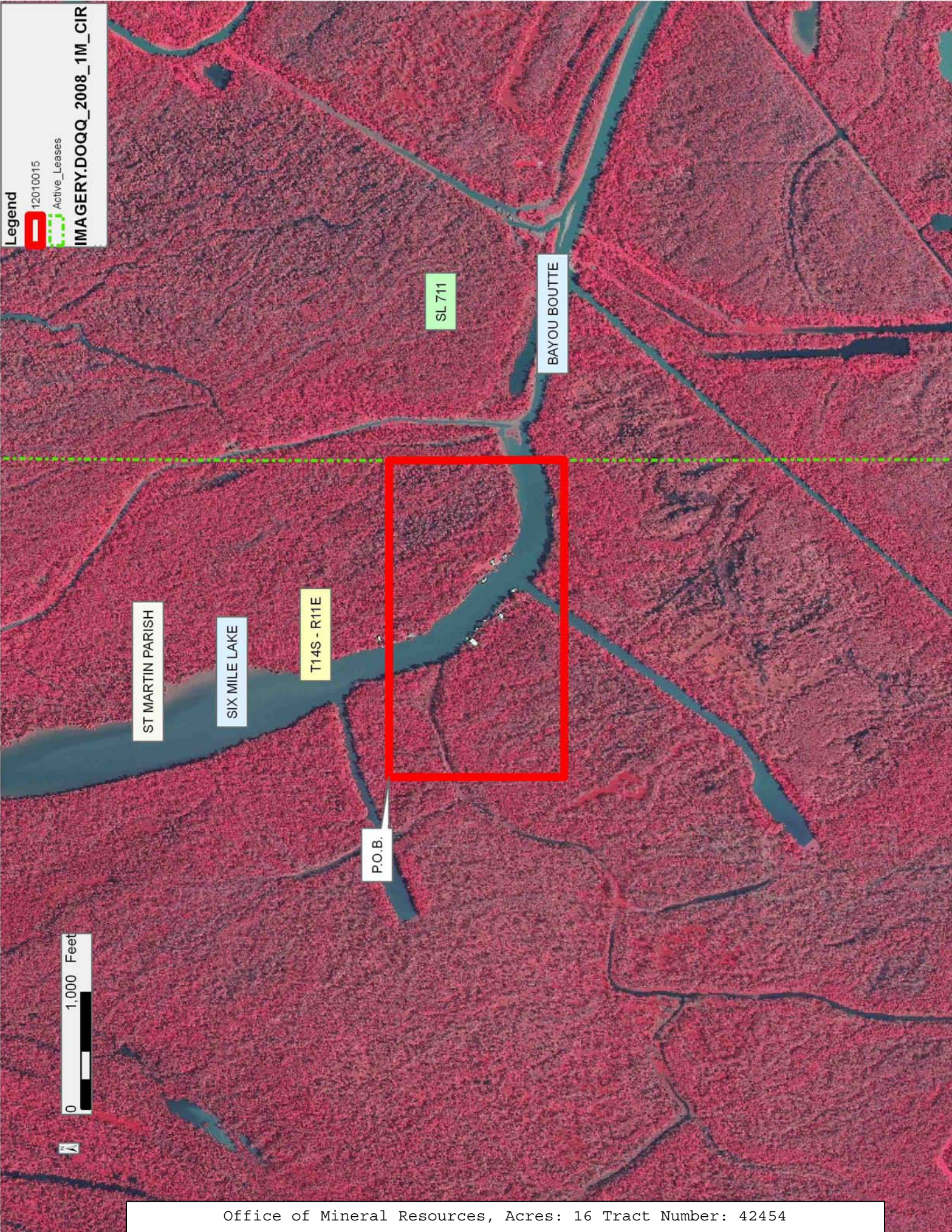
Bidder	Cash Payment	Price/ Acre	Rental	Oil	Gas	Other

Legend

12010015

Active_Leases

IMAGERY.DOQQ_2008_1M_CIR



TRACT 42455 - Iberia Parish, Louisiana

All of the lands now or formerly constituting the beds and bottoms of all water bodies of every nature and description as to which title is vested in the State of Louisiana, together with all islands arising therein and other lands formed by accretion or by reliction, where allowed by law, excepting tax adjudicated lands, and not presently under mineral lease on January 11, 2012, situated in Iberia Parish, Louisiana, and more particularly described as follows: Beginning at a point having Coordinates of X = 1,838,312.00 and Y = 414,752.00; thence East 4,303.74 feet to a point on the Western boundary of State Lease No. 743, as amended, having Coordinates of X = 1,842,615.74 and Y = 414,752.00; thence along the boundary of said State Lease No. 743 the following courses: South 02 degrees 14 minutes 37 seconds East 1,501.62 feet and East 1,429.15 feet to the Northwest corner of State Lease No. 20540 having Coordinates of X = 1,844,103.68 and Y = 413,251.53; thence along the boundary of said State Lease No. 20540 the following courses: South 1,515.62 feet and East 1,264.33 feet to its Southeast corner having Coordinates of X = 1,845,368.01 and Y = 411,735.91; thence South 848.91 feet to a point having Coordinates of X = 1,845,368.01 and Y = 410,887.00; thence East 1,561.99 feet to a point having Coordinates of X = 1,846,930.00 and Y = 410,887.00; thence South 1,048.00 feet to a point having Coordinates of X = 1,846,930.00 and Y = 409,839.00; thence West 8,618.00 feet to a point having Coordinates of X = 1,838,312.00 and Y = 409,839.00; thence North 4,913.00 feet to the point of beginning, containing approximately **643 acres**, all as more particularly outlined on a plat on file in the Office of Mineral Resources, Department of Natural Resources. All bearings, distances and coordinates are based on Louisiana Coordinate System of 1927, (North or South Zone), where applicable.

NOTE: The above description of the Tract nominated for lease has been provided and corrected, where required, exclusively by the nomination party. Any mineral lease selected from this Tract and awarded by the Louisiana State Mineral and Energy Board shall be without warranty of any kind, either express, implied, or statutory, including, but not limited to, the implied warranties of merchantability and fitness for a particular purpose. Should the mineral lease awarded by the Louisiana State Mineral and Energy Board be subsequently modified, cancelled or abrogated due to the existence of conflicting leases, operating agreements, private claims or other future obligations or conditions which may affect all or any portion of the leased Tract, it shall not relieve the Lessee of the obligation to pay any bonus due thereon to the Louisiana State Mineral and Energy Board, nor shall the Louisiana State Mineral and Energy Board be obligated to refund any consideration paid by the Lessor prior to such modification, cancellation, or abrogation, including, but not limited to, bonuses, rentals and royalties.

NOTE: The State of Louisiana does hereby reserve, and this lease shall be subject to, the imprescriptible right of surface use in the nature of a servitude in favor of the Department of Natural Resources, including its

Offices and Commissions, for the sole purpose of implementing, constructing, servicing and maintaining approved coastal zone management and/or restoration projects. Utilization of any and all rights derived under this lease by the mineral lessee, its agents, successors or assigns, shall not interfere with nor hinder the reasonable surface use by the Department of Natural Resources, its Offices or Commissions, as herein above reserved.

NOTE: This tract is located in an area designated by the Louisiana Legislature or the Wildlife and Fisheries Commission as a Public Oyster Seed Ground, Reservation, or area of Calcasieu or Sabine Lake. Proposed projects occurring in these areas will be evaluated on a case by case basis by Louisiana Department of Wildlife & Fisheries. Modifications to proposed project features including, but not limited to, access routes, well sites, flowlines, and appurtenant structures maybe required by the Louisiana Department of Wildlife and Fisheries. In addition, compensatory mitigation will be required to offset unavoidable habitat impacts.

Applicant: KARE-SUE ENERGY, INC.

Bidder	Cash Payment	Price/ Acre	Rental	Oil	Gas	Other



Legend

12010011

Active_Leases

IMAGERY.DOQQ_2008_1M_CIR

IBERIA PARISH

VERMILION BAY

P.O.B.

SL 743

SL 20540

T14S - R6E

TRACT 42456 - Iberia Parish, Louisiana

All of the lands now or formerly constituting the beds and bottoms of all water bodies of every nature and description as to which title is vested in the State of Louisiana, together with all islands arising therein and other lands formed by accretion or by reliction, where allowed by law, excepting tax adjudicated lands, and not presently under mineral lease on January 11, 2012, situated in Iberia Parish, Louisiana, and more particularly described as follows: Beginning at a point having Coordinates of X = 1,838,312.00 and Y = 409,839.00; thence East 8,618.00 feet to a point having Coordinates of X = 1,846,930.00 and Y = 409,839.00; thence South 4,649.00 feet to a point having Coordinates of X = 1,846,930.00 and Y = 405,190.00; thence West 8,618.00 feet to a point having Coordinates of X = 1,838,312.00 and Y = 405,190.00; thence North 4,649.00 feet to the point of beginning, containing approximately **648 acres**, all as more particularly outlined on a plat on file in the Office of Mineral Resources, Department of Natural Resources. All bearings, distances and coordinates are based on Louisiana Coordinate System of 1927, (North or South Zone), where applicable.

NOTE: The above description of the Tract nominated for lease has been provided and corrected, where required, exclusively by the nomination party. Any mineral lease selected from this Tract and awarded by the Louisiana State Mineral and Energy Board shall be without warranty of any kind, either express, implied, or statutory, including, but not limited to, the implied warranties of merchantability and fitness for a particular purpose. Should the mineral lease awarded by the Louisiana State Mineral and Energy Board be subsequently modified, cancelled or abrogated due to the existence of conflicting leases, operating agreements, private claims or other future obligations or conditions which may affect all or any portion of the leased Tract, it shall not relieve the Lessee of the obligation to pay any bonus due thereon to the Louisiana State Mineral and Energy Board, nor shall the Louisiana State Mineral and Energy Board be obligated to refund any consideration paid by the Lessor prior to such modification, cancellation, or abrogation, including, but not limited to, bonuses, rentals and royalties.

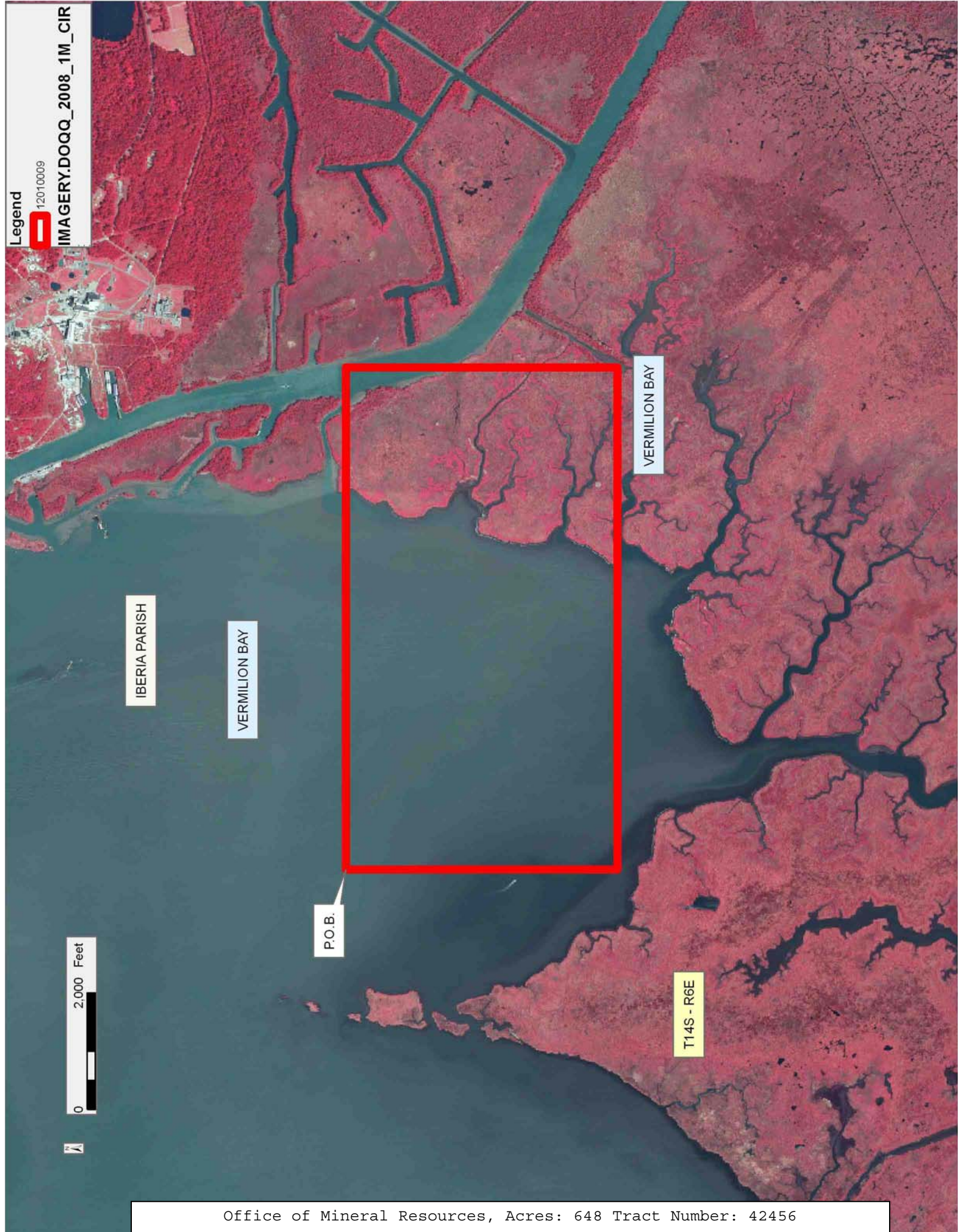
NOTE: The State of Louisiana does hereby reserve, and this lease shall be subject to, the imprescriptible right of surface use in the nature of a servitude in favor of the Department of Natural Resources, including its Offices and Commissions, for the sole purpose of implementing, constructing, servicing and maintaining approved coastal zone management and/or restoration projects. Utilization of any and all rights derived under this lease by the mineral lessee, its agents, successors or assigns, shall not interfere with nor hinder the reasonable surface use by the Department of Natural Resources, its Offices or Commissions, as herein above reserved.

NOTE: This tract is located in an area designated by the Louisiana Legislature or the Wildlife and Fisheries Commission as a Public Oyster

Seed Ground, Reservation, or area of Calcasieu or Sabine Lake. Proposed projects occurring in these areas will be evaluated on a case by case basis by Louisiana Department of Wildlife & Fisheries. Modifications to proposed project features including, but not limited to, access routes, well sites, flowlines, and appurtenant structures maybe required by the Louisiana Department of Wildlife and Fisheries. In addition, compensatory mitigation will be required to offset unavoidable habitat impacts.

Applicant: KARE-SUE ENERGY, INC.

Bidder	Cash Payment	Price/ Acre	Rental	Oil	Gas	Other



TRACT 42457 - Portion of Blocks 35, and 36, Breton Sound Area, Plaquemines Parish, Louisiana

All of the lands now or formerly constituting the beds and bottoms of all water bodies of every nature and description as to which title is vested in the State of Louisiana, together with all islands arising therein and other lands formed by accretion or by reliction, where allowed by law, excepting tax adjudicated lands, and not presently under mineral lease on January 11, 2012, situated in Plaquemines Parish, Louisiana, and more particularly described as follows: Beginning at the Southeast corner of Block 35, Breton Sound Area, having Coordinates of X = 2,679,600.00 and Y = 307,580.00; thence West 4,150.00 feet along the South line of said Block 35 to a point having Coordinates of X = 2,675,450.00 and Y = 307,580.00; thence North 14,750.00 feet to point on the North line of said Block 35 having Coordinates of X = 2,675,450.00 and Y = 322,330.00; thence East 4,150.00 feet along the North line of said Block 35 to its Northeast corner, also being the Northwest corner of State Lease No. 1230, as amended, having Coordinates of X = 2,679,600.00 and Y = 322,330.00; thence along the boundary of said State Lease No. 1230 the following courses: South 5,050.00 feet to a point having Coordinates of X = 2,679,600.00 and Y = 317,280.00; East 7,500.00 feet to a point having Coordinates of X = 2,687,100.00 and Y = 317,280.00; South 1,300.00 feet to a point having Coordinates of X = 2,687,100.00 and Y = 315,980.00; South 37 degrees 20 minutes 00 seconds West 7,420.24 feet to a point having Coordinates of X = 2,682,600.00 and Y = 310,080.00 and South 21 degrees 48 minutes 05 seconds West 2,692.58 feet to its Southernmost Southwest corner, also being a point on the South line of Block 36, Breton Sound Area, having Coordinates of X = 2,681,600.00 and Y = 307,580.00; thence West 2,000.00 feet along the South line of said Block 36 to the point of beginning, containing approximately **2,483.64 acres**, all as more particularly outlined on a plat on file in the Office of Mineral Resources, Department of Natural Resources. All bearings, distances and coordinates are based on Louisiana Coordinate System of 1927, (North or South Zone), where applicable.

NOTE: The above description of the Tract nominated for lease has been provided and corrected, where required, exclusively by the nomination party. Any mineral lease selected from this Tract and awarded by the Louisiana State Mineral and Energy Board shall be without warranty of any kind, either express, implied, or statutory, including, but not limited to, the implied warranties of merchantability and fitness for a particular purpose. Should the mineral lease awarded by the Louisiana State Mineral and Energy Board be subsequently modified, cancelled or abrogated due to the existence of conflicting leases, operating agreements, private claims or other future obligations or conditions which may affect all or any portion of the leased Tract, it shall not relieve the Lessee of the obligation to pay any bonus due thereon to the Louisiana State Mineral and Energy Board, nor shall the Louisiana State Mineral and Energy Board be obligated to refund any consideration paid by the Lessor prior to such modification, cancellation, or abrogation, including, but not limited to, bonuses, rentals and royalties.

NOTE: The State of Louisiana does hereby reserve, and this lease shall be subject to, the imprescriptible right of surface use in the nature of a servitude in favor of the Department of Natural Resources, including its Offices and Commissions, for the sole purpose of implementing, constructing, servicing and maintaining approved coastal zone management and/or restoration projects. Utilization of any and all rights derived under this lease by the mineral lessee, its agents, successors or assigns, shall not interfere with nor hinder the reasonable surface use by the Department of Natural Resources, its Offices or Commissions, as herein above reserved.

NOTE: It appears, according to our records, that a portion of this Tract is located within the restrictive safety fairway area as set out by the Corps of Engineers, U.S. Army and/or the restrictive anchorage area as set out by the U.S. Coast Guard.

Applicant: ROBERT A. SCHROEDER, INC.

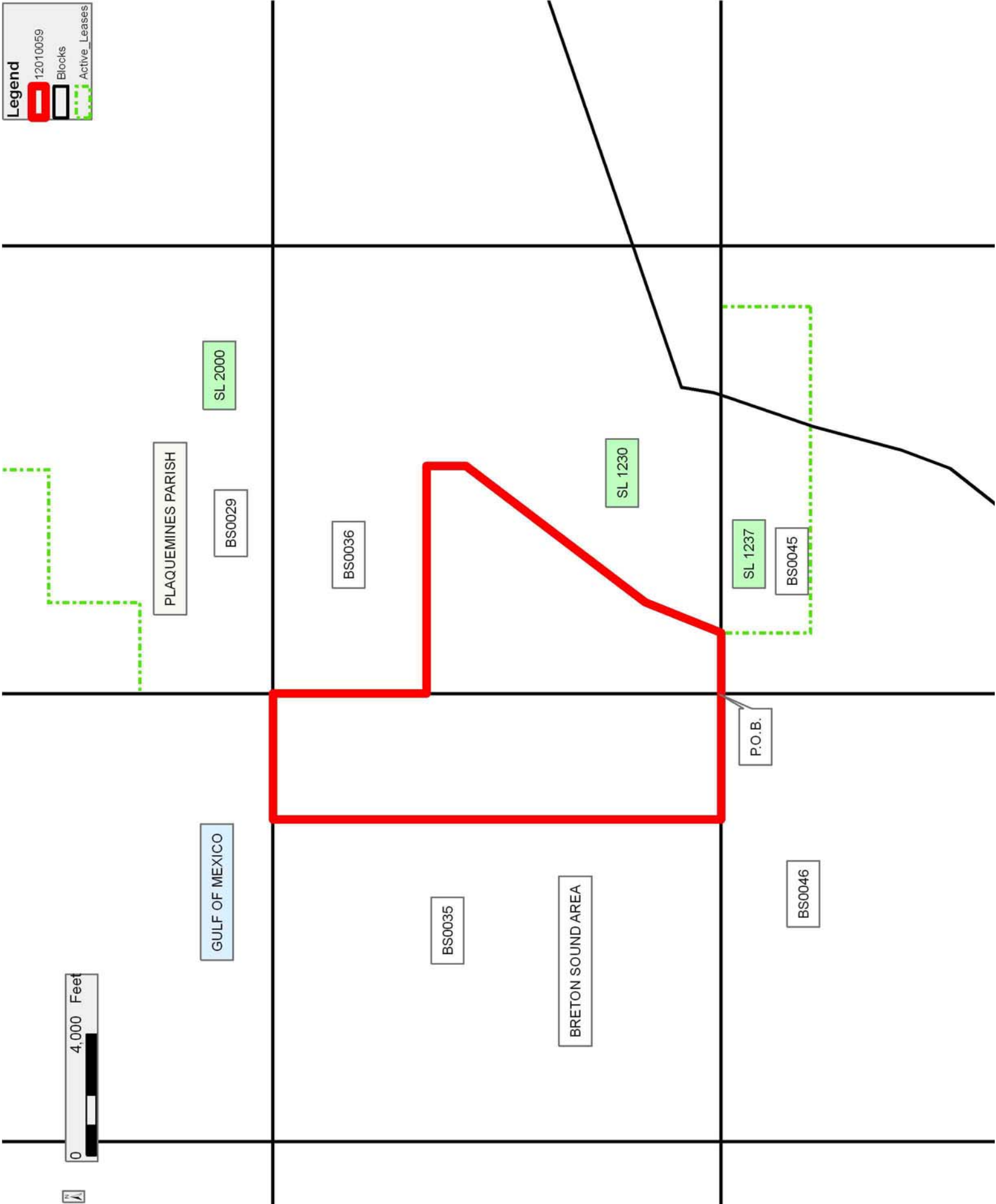
Bidder	Cash Payment	Price/ Acre	Rental	Oil	Gas	Other

Legend

12010059

Blocks

Active_Leases



TRACT 42458 - Portion of Block 35, Breton Sound Area, Plaquemines Parish, Louisiana

All of the lands now or formerly constituting the beds and bottoms of all water bodies of every nature and description as to which title is vested in the State of Louisiana, together with all islands arising therein and other lands formed by accretion or by reliction, where allowed by law, excepting tax adjudicated lands, and not presently under mineral lease on January 11, 2012, situated in Plaquemines Parish, Louisiana, and more particularly described as follows: Beginning at a point on the South line of Block 35, Breton Sound Area, having Coordinates of X = 2,668,075.00 and Y = 307,580.00; thence North 14,750.00 feet to point on the North line of said Block 35 having Coordinates of X = 2,668,075.00 and Y = 322,330.00; thence East 7,375.00 feet along the North line of said Block 35 to a point having Coordinates of X = 2,675,450.00 and Y = 322,330.00; thence South 14,750.00 feet to a point on the South line of said Block 35 having Coordinates of X = 2,675,450.00 and Y = 307,580.00; thence West 7,375.00 feet along the South line of said Block 35 to the point of beginning, containing approximately **2,497.27 acres**, all as more particularly outlined on a plat on file in the Office of Mineral Resources, Department of Natural Resources. All bearings, distances and coordinates are based on Louisiana Coordinate System of 1927, (North or South Zone), where applicable.

NOTE: The above description of the Tract nominated for lease has been provided and corrected, where required, exclusively by the nomination party. Any mineral lease selected from this Tract and awarded by the Louisiana State Mineral and Energy Board shall be without warranty of any kind, either express, implied, or statutory, including, but not limited to, the implied warranties of merchantability and fitness for a particular purpose. Should the mineral lease awarded by the Louisiana State Mineral and Energy Board be subsequently modified, cancelled or abrogated due to the existence of conflicting leases, operating agreements, private claims or other future obligations or conditions which may affect all or any portion of the leased Tract, it shall not relieve the Lessee of the obligation to pay any bonus due thereon to the Louisiana State Mineral and Energy Board, nor shall the Louisiana State Mineral and Energy Board be obligated to refund any consideration paid by the Lessor prior to such modification, cancellation, or abrogation, including, but not limited to, bonuses, rentals and royalties.

NOTE: The State of Louisiana does hereby reserve, and this lease shall be subject to, the imprescriptible right of surface use in the nature of a servitude in favor of the Department of Natural Resources, including its Offices and Commissions, for the sole purpose of implementing, constructing, servicing and maintaining approved coastal zone management and/or restoration projects. Utilization of any and all rights derived under this lease by the mineral lessee, its agents, successors or assigns, shall not interfere with nor hinder the reasonable surface use by the

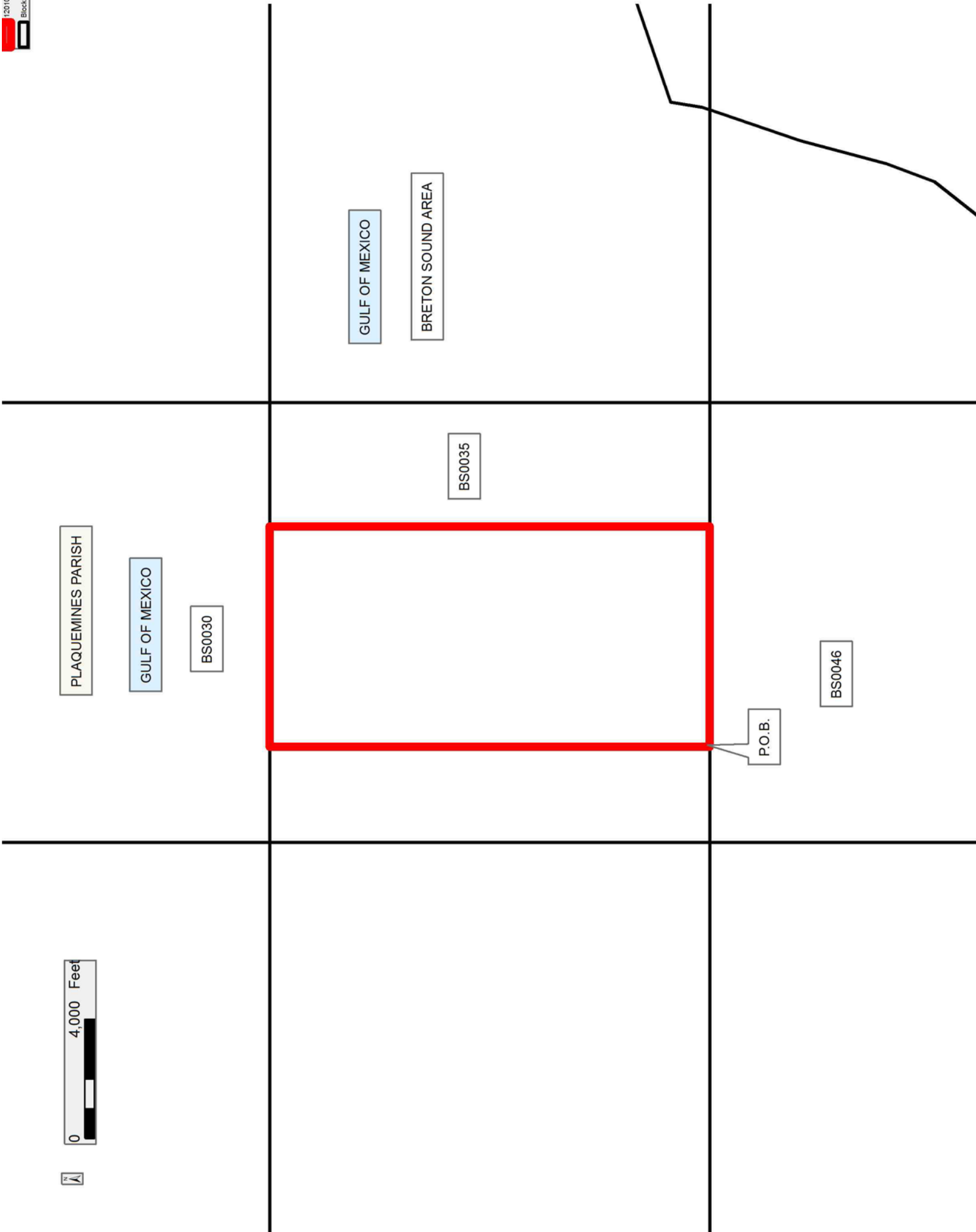
Department of Natural Resources, its Offices or Commissions, as herein above reserved.

NOTE: It appears, according to our records, that a portion of this Tract is located within the restrictive safety fairway area as set out by the Corps of Engineers, U.S. Army and/or the restrictive anchorage area as set out by the U.S. Coast Guard.

NOTE: This tract is located in an area designated by the Louisiana Legislature or the Wildlife and Fisheries Commission as a Public Oyster Seed Ground, Reservation, or area of Calcasieu or Sabine Lake. Proposed projects occurring in these areas will be evaluated on a case by case basis by Louisiana Department of Wildlife & Fisheries. Modifications to proposed project features including, but not limited to, access routes, well sites, flowlines, and appurtenant structures maybe required by the Louisiana Department of Wildlife and Fisheries. In addition, compensatory mitigation will be required to offset unavoidable habitat impacts.

Applicant: ROBERT A. SCHROEDER, INC.

Bidder	Cash Payment	Price/ Acre	Rental	Oil	Gas	Other



TRACT 42459 - Portion of Block 46, Breton Sound Area, Plaquemines Parish, Louisiana

All of the lands now or formerly constituting the beds and bottoms of all water bodies of every nature and description as to which title is vested in the State of Louisiana, together with all islands arising therein and other lands formed by accretion or by reliction, where allowed by law, excepting tax adjudicated lands, and not presently under mineral lease on January 11, 2012, situated in Plaquemines Parish, Louisiana, and more particularly described as follows: Beginning at the Northeast corner of Block 46, Breton Sound Area, having Coordinates of X = 2,679,600.00 and Y = 307,580.00; thence South 6,350.00 feet along the East line of said Block 46 to the Northeast corner of State Lease No. 19948 having Coordinates of X = 2,679,600.00 and Y = 301,230.00; thence along the boundary of said State Lease No. 19948 the following courses: West 1,850.00 feet to its Northernmost Northwest corner having Coordinates of X = 2,677,750.00 and Y = 301,230.00 and South 43 degrees 03 minutes 41 seconds West 1,402.91 feet to a point having Coordinates of X = 2,676,792.12 and Y = 300,205.00; thence West 8,717.12 feet to point a having Coordinates of X = 2,668,075.00 and Y = 300,205.00; thence North 7,375.00 feet to point on the North line of said Block 46 having Coordinates of X = 2,668,075.00 and Y = 307,580.00; thence East 11,525.00 feet along the North line of said Block 46 to the point of beginning, containing approximately **1,896.46 acres**, all as more particularly outlined on a plat on file in the Office of Mineral Resources, Department of Natural Resources. All bearings, distances and coordinates are based on Louisiana Coordinate System of 1927, (North or South Zone), where applicable.

NOTE: The above description of the Tract nominated for lease has been provided and corrected, where required, exclusively by the nomination party. Any mineral lease selected from this Tract and awarded by the Louisiana State Mineral and Energy Board shall be without warranty of any kind, either express, implied, or statutory, including, but not limited to, the implied warranties of merchantability and fitness for a particular purpose. Should the mineral lease awarded by the Louisiana State Mineral and Energy Board be subsequently modified, cancelled or abrogated due to the existence of conflicting leases, operating agreements, private claims or other future obligations or conditions which may affect all or any portion of the leased Tract, it shall not relieve the Lessee of the obligation to pay any bonus due thereon to the Louisiana State Mineral and Energy Board, nor shall the Louisiana State Mineral and Energy Board be obligated to refund any consideration paid by the Lessor prior to such modification, cancellation, or abrogation, including, but not limited to, bonuses, rentals and royalties.

NOTE: The State of Louisiana does hereby reserve, and this lease shall be subject to, the imprescriptible right of surface use in the nature of a servitude in favor of the Department of Natural Resources, including its Offices and Commissions, for the sole purpose of implementing, constructing, servicing and maintaining approved coastal zone management

and/or restoration projects. Utilization of any and all rights derived under this lease by the mineral lessee, its agents, successors or assigns, shall not interfere with nor hinder the reasonable surface use by the Department of Natural Resources, its Offices or Commissions, as herein above reserved.

Applicant: ROBERT A. SCHROEDER, INC.

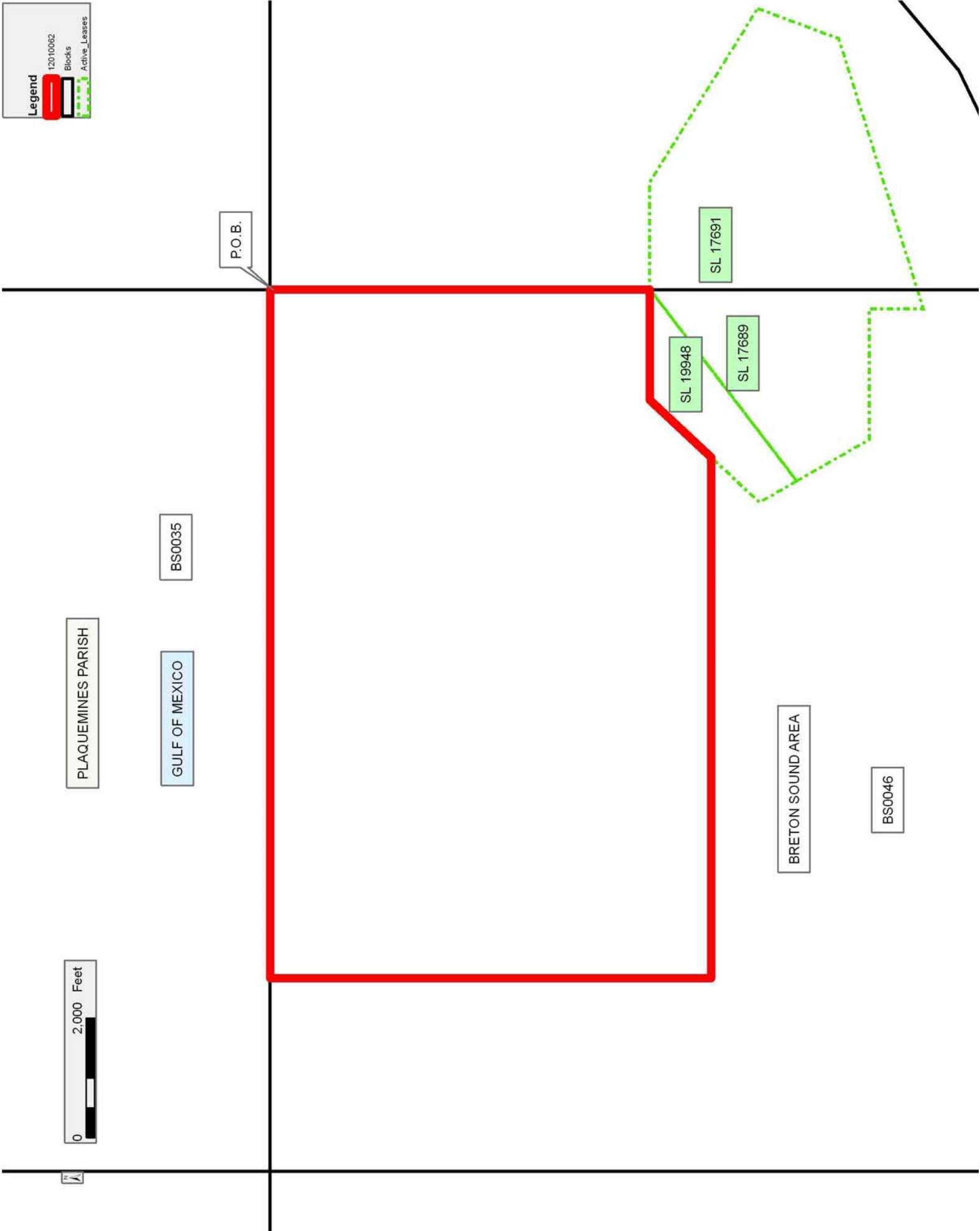
Bidder	Cash Payment	Price/ Acre	Rental	Oil	Gas	Other

Legend

12010062

Blocks

Active Leases



TRACT 42460 - Portion of Block 45, Breton Sound Area, Plaquemines Parish, Louisiana

All of the lands now or formerly constituting the beds and bottoms of all water bodies of every nature and description as to which title is vested in the State of Louisiana, together with all islands arising therein and other lands formed by accretion or by reliction, where allowed by law, excepting tax adjudicated lands, and not presently under mineral lease on January 11, 2012, situated in Plaquemines Parish, Louisiana, and more particularly described as follows: Beginning at the Northwest corner of Block 45, Breton Sound Area, having Coordinates of X = 2,679,600.00 and Y = 307,580.00; thence East 2,000.00 feet along the North line of said Block 45 to the Northwest corner of State Lease No. 1237, as amended, having Coordinates of X = 2,681,600.00 and Y = 307,580.00; thence South 2,950.00 feet along the West boundary of said State Lease No. 1237 to its Southwest corner, also being the Northwest corner of State Lease No. 2001, as amended, having Coordinates of X = 2,681,600.00 and Y = 304,630.00; thence along the boundary of said State Lease No. 2001 the following courses: South 2,925.00 feet to its Southwest corner having Coordinates of X = 2,681,600.00 and Y = 301,705.00 and East 6,025.35 feet to a point on the Louisiana Coastline, as decreed by the Supreme Court of the United States, as determined by a Special Master appointed therein, in litigation styled *United States v. State of Louisiana et al No. 9 Original*, in 1975, having Coordinates of X = 2,687,625.35 and Y = 301,705.00; thence along said Louisiana Coastline the following: Southwesterly on a straight line to a point having Coordinates of X = 2,687,610 and Y = 301,648; Southwesterly on a straight line to a point having Coordinates of X = 2,687,014 and Y = 300,054; Southwesterly on a straight line to a point having Coordinates of X = 2,685,058 and Y = 297,573 and Southwesterly on a straight line to the Northeast corner of State Lease No. 19080, as amended, having Coordinates of X = 2,684,709.63 and Y = 297,280.94; thence West 1,210.49 feet along the North boundary of said State Lease No. 19080 to its Northwest corner, also being a point on the Eastern boundary of State Lease No. 19669 having Coordinates of X = 2,683,499.14 and Y = 297,280.94; thence North 20 degrees 26 minutes 18 seconds East 843.43 feet along the Eastern boundary of said State Lease No. 19669 to its Northeast corner, also being the Southernmost Southeast corner of State Lease No. 17691, as amended, having Coordinates of X = 2,683,793.66 and Y = 298,071.28; thence along the boundary of said State Lease No. 17691 the following courses: North 20 degrees 26 minutes 18 seconds East 1,450.00 feet to a point having Coordinates of X = 2,684,300.00 and Y = 299,430.00; North 58 degrees 10 minutes 21 seconds West 3,413.21 feet to a point having Coordinates of X = 2,681,400.00 and Y = 301,230.00 and West 1,800.00 feet to its Northwest corner, also being a point on the West line of said Block 45 having Coordinates of X = 2,679,600.00 and Y = 301,230.00; thence North 6,350.00 feet along the West line of said Block 45 to the point of beginning, containing approximately **618.02 acres**, all as more particularly outlined on a plat on file in the Office of Mineral Resources, Department of Natural Resources. All bearings, distances and coordinates are based on

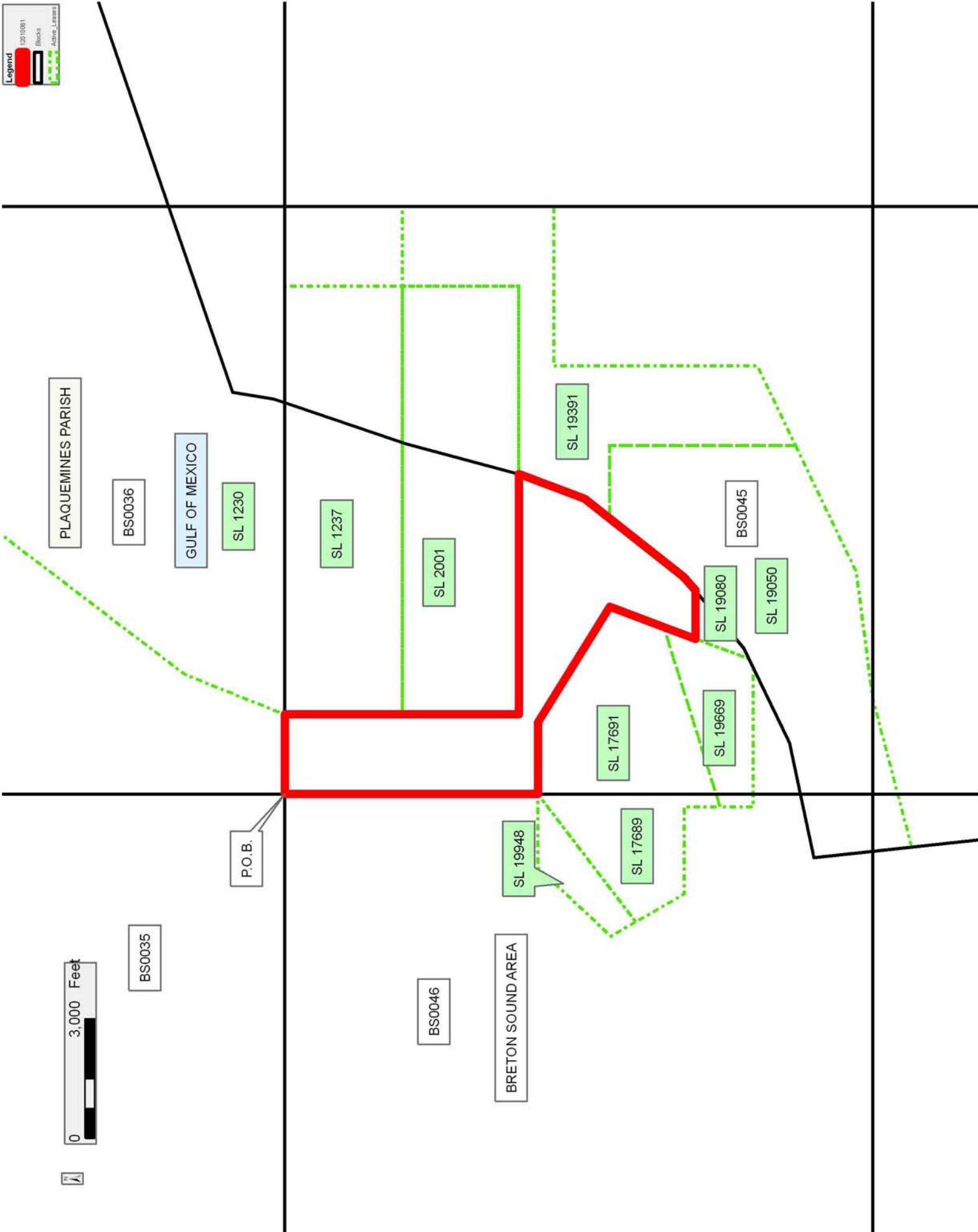
Louisiana Coordinate System of 1927, (North or South Zone), where applicable.

NOTE: The above description of the Tract nominated for lease has been provided and corrected, where required, exclusively by the nomination party. Any mineral lease selected from this Tract and awarded by the Louisiana State Mineral and Energy Board shall be without warranty of any kind, either express, implied, or statutory, including, but not limited to, the implied warranties of merchantability and fitness for a particular purpose. Should the mineral lease awarded by the Louisiana State Mineral and Energy Board be subsequently modified, cancelled or abrogated due to the existence of conflicting leases, operating agreements, private claims or other future obligations or conditions which may affect all or any portion of the leased Tract, it shall not relieve the Lessee of the obligation to pay any bonus due thereon to the Louisiana State Mineral and Energy Board, nor shall the Louisiana State Mineral and Energy Board be obligated to refund any consideration paid by the Lessor prior to such modification, cancellation, or abrogation, including, but not limited to, bonuses, rentals and royalties.

NOTE: The State of Louisiana does hereby reserve, and this lease shall be subject to, the imprescriptible right of surface use in the nature of a servitude in favor of the Department of Natural Resources, including its Offices and Commissions, for the sole purpose of implementing, constructing, servicing and maintaining approved coastal zone management and/or restoration projects. Utilization of any and all rights derived under this lease by the mineral lessee, its agents, successors or assigns, shall not interfere with nor hinder the reasonable surface use by the Department of Natural Resources, its Offices or Commissions, as herein above reserved.

Applicant: ROBERT A. SCHROEDER, INC.

Bidder	Cash Payment	Price/ Acre	Rental	Oil	Gas	Other



TRACT 42461 - Portion of Blocks 45, and 46, Breton Sound Area, Plaquemines Parish, Louisiana

All of the lands now or formerly constituting the beds and bottoms of all water bodies of every nature and description as to which title is vested in the State of Louisiana, together with all islands arising therein and other lands formed by accretion or by reliction, where allowed by law, excepting tax adjudicated lands, and not presently under mineral lease on January 11, 2012, situated in Plaquemines Parish, Louisiana, and more particularly described as follows: Beginning at a point on the South line of Block 46, Breton Sound Area, having Coordinates of X = 2,668,075.00 and Y = 292,830.00; thence North 7,375.00 feet to point a having Coordinates of X = 2,668,075.00 and Y = 300,205.00; thence East 8,717.12 feet to a point on the Western boundary of State Lease No. 19948 having Coordinates of X = 2,676,792.12 and Y = 300,205.00; thence along the boundary of said State Lease No. 19948 the following courses: South 43 degrees 03 minutes 41 seconds West 1,105.63 feet to its Westernmost corner having Coordinates of X = 2,676,037.21 and Y = 299,397.20 and South 29 degrees 48 minutes 53 seconds East 717.46 feet to its Southernmost corner, also being the Northernmost corner of State Lease No. 19079, as amended, having Coordinates of X = 2,676,393.93 and Y = 298,774.70; thence along the boundary of said State Lease No. 19079 the following courses: South 52 degrees 33 minutes 13 seconds West 449.31 feet to a point having Coordinates of X = 2,676,037.21 and Y = 298,501.51; South 1,841.51 feet to a point having Coordinates of X = 2,676,037.21 and Y = 296,660.00 and East 3,242.79 feet to its Southeast corner, also being the Northwest corner of State Lease No. 19669 having Coordinates of X = 2,679,280.00 and Y = 296,660.00; thence along the boundary of said State Lease No. 19669 the following courses: South 830.00 feet to its Southwest corner having Coordinates of X = 2,679,280.00 and Y = 295,830.00; East 320.00 feet to a point on the East Line of said Block 46, also being the West line of Block 45, Breton Sound Area, having Coordinates of X = 2,679,600.00 and Y = 295,830.00 and East 3,168.97 feet to a point on the Louisiana Coastline, as decreed by the Supreme Court of the United States, as determined by a Special Master appointed therein, in litigation styled *United States v. State of Louisiana et al No. 9 Original*, in 1975, having Coordinates of X = 2,682,768.97 and Y = 295,830.00; thence along said Louisiana Coastline the following: Southwesterly on a straight line to a point having Coordinates of X = 2,680,880 and Y = 294,918; Southwesterly on a straight line to a point on the West line of said Block 45, also being the East line of said Block 46 having Coordinates of X = 2,679,600.00 and Y = 294,643.81; Southwesterly on a straight line to a point having Coordinates of X = 2,678,009 and Y = 294,303 and Southeasterly on a straight line to a point on the South line of said Block 46 having Coordinates of X = 2,678,166.42 and Y = 292,830.00; thence West 10,091.42 feet along the South line of said Block 46 to the point of beginning, containing approximately **1,659.12 acres**, all as more particularly outlined on a plat on file in the Office of Mineral Resources, Department of Natural Resources. All bearings, distances and coordinates are based on Louisiana Coordinate System of 1927, (North or South Zone), where applicable.

NOTE: The above description of the Tract nominated for lease has been provided and corrected, where required, exclusively by the nomination party. Any mineral lease selected from this Tract and awarded by the Louisiana State Mineral and Energy Board shall be without warranty of any kind, either express, implied, or statutory, including, but not limited to, the implied warranties of merchantability and fitness for a particular purpose. Should the mineral lease awarded by the Louisiana State Mineral and Energy Board be subsequently modified, cancelled or abrogated due to the existence of conflicting leases, operating agreements, private claims or other future obligations or conditions which may affect all or any portion of the leased Tract, it shall not relieve the Lessee of the obligation to pay any bonus due thereon to the Louisiana State Mineral and Energy Board, nor shall the Louisiana State Mineral and Energy Board be obligated to refund any consideration paid by the Lessor prior to such modification, cancellation, or abrogation, including, but not limited to, bonuses, rentals and royalties.

NOTE: The State of Louisiana does hereby reserve, and this lease shall be subject to, the imprescriptible right of surface use in the nature of a servitude in favor of the Department of Natural Resources, including its Offices and Commissions, for the sole purpose of implementing, constructing, servicing and maintaining approved coastal zone management and/or restoration projects. Utilization of any and all rights derived under this lease by the mineral lessee, its agents, successors or assigns, shall not interfere with nor hinder the reasonable surface use by the Department of Natural Resources, its Offices or Commissions, as herein above reserved.

Applicant: ROBERT A. SCHROEDER, INC.

Bidder	Cash Payment	Price/ Acre	Rental	Oil	Gas	Other

12010063

Blocks

Active_Lease

Counties

