

TRACT 42462 - Portion of Block 51, Breton Sound Area, Plaquemines Parish, Louisiana

All of the lands now or formerly constituting the beds and bottoms of all water bodies of every nature and description as to which title is vested in the State of Louisiana, together with all islands arising therein and other lands formed by accretion or by reliction, where allowed by law, excepting tax adjudicated lands, and not presently under mineral lease on January 11, 2012, situated in Plaquemines Parish, Louisiana, and more particularly described as follows: Beginning at the Northwest corner of Block 51, Breton Sound Area, having Coordinates of X = 2,664,850.00 and Y = 292,830.00; thence East 13,316.42 feet along the North line of said Block 51 to a point on the Louisiana Coastline, as decreed by the Supreme Court of the United States, as determined by a Special Master appointed therein, in litigation styled *United States v. State of Louisiana et al No. 9 Original*, in 1975, having Coordinates of X = 2,678,166.42 and Y = 292,830.00; thence Southeasterly on a straight line along said Louisiana Coastline to a point having Coordinates of X = 2,678,954.61 and Y = 285,455.00; thence West 5,332.79 feet to a point on the Eastern boundary of State Lease No. 16890 having Coordinates of X = 2,673,621.83 and Y = 285,455.00; thence along the boundary of said State Lease No. 16890 the following courses: North 31 degrees 53 minutes 54 seconds East 1,113.09 feet to a point having Coordinates of X = 2,674,210.00 and Y = 286,400.00; North 01 degrees 37 minutes 30 seconds West 1,730.70 feet to a point having Coordinates of X = 2,674,160.92 and Y = 288,130.00; West 1,289.48 feet to a point having Coordinates of X = 2,672,871.44 and Y = 288,130.00; South 73 degrees 14 minutes 31 seconds West 2,393.07 feet to a point having Coordinates of X = 2,670,580.00 and Y = 287,440.00 and South 05 degrees 15 minutes 21 seconds East 1,993.38 feet to a point having Coordinates of X = 2,670,762.60 and Y = 285,455.00; thence West 5,912.60 feet to a point on the West line of said Block 51 having Coordinates of X = 2,664,850.00 and Y = 285,455.00; thence North 7,375.00 feet along the West line of said Block 51 to the point of beginning, containing approximately **2,128.03 acres**, all as more particularly outlined on a plat on file in the Office of Mineral Resources, Department of Natural Resources. All bearings, distances and coordinates are based on Louisiana Coordinate System of 1927, (North or South Zone), where applicable.

NOTE: The above description of the Tract nominated for lease has been provided and corrected, where required, exclusively by the nomination party. Any mineral lease selected from this Tract and awarded by the Louisiana State Mineral and Energy Board shall be without warranty of any kind, either express, implied, or statutory, including, but not limited to, the implied warranties of merchantability and fitness for a particular purpose. Should the mineral lease awarded by the Louisiana State Mineral and Energy Board be subsequently modified, cancelled or abrogated due to the existence of conflicting leases, operating agreements, private claims or other future obligations or conditions which may affect all or any portion of the leased Tract, it shall not relieve the Lessee of the obligation to pay any bonus due thereon to the Louisiana State Mineral and Energy Board, nor shall the Louisiana State Mineral and Energy Board be

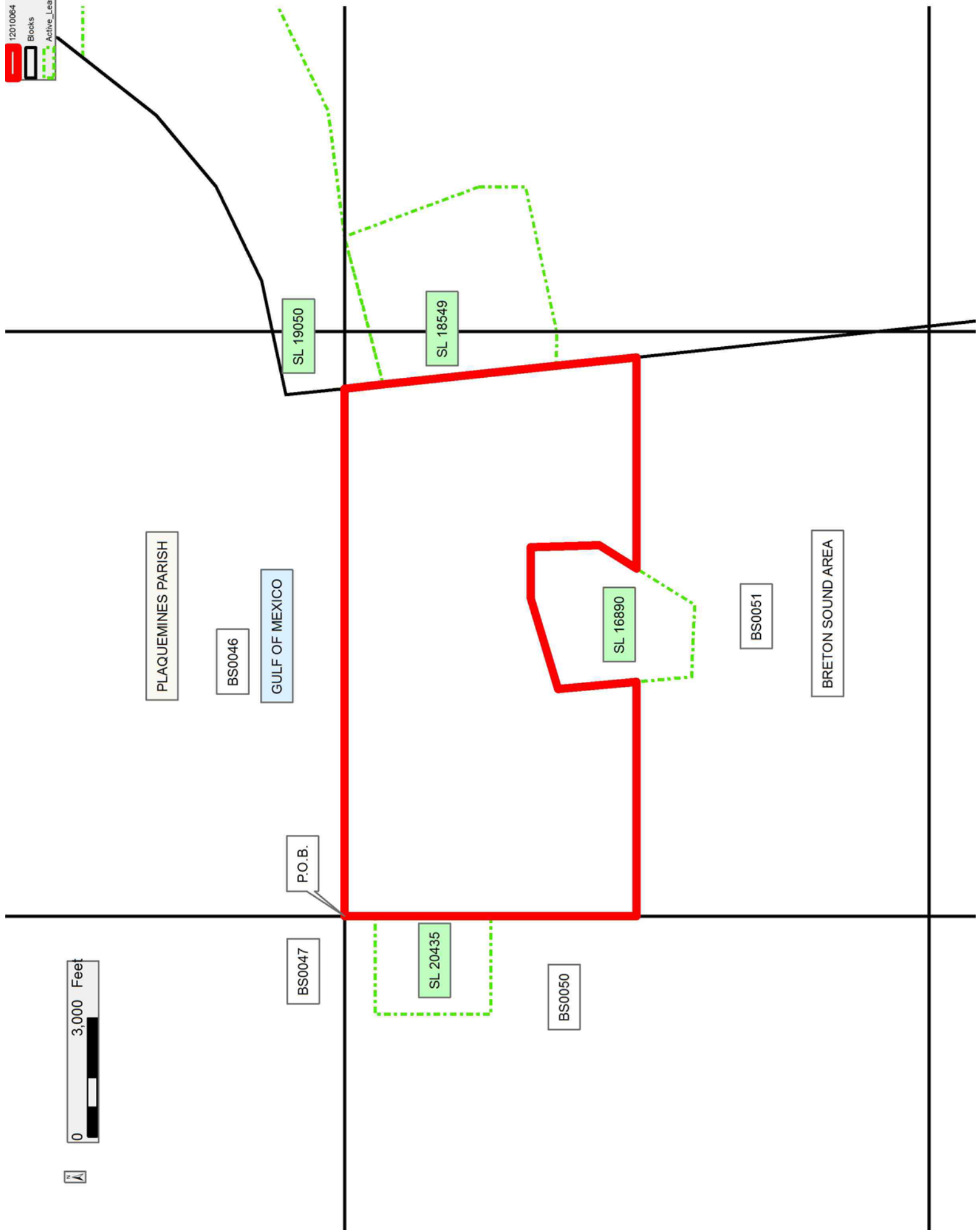
obligated to refund any consideration paid by the Lessor prior to such modification, cancellation, or abrogation, including, but not limited to, bonuses, rentals and royalties.

NOTE: The State of Louisiana does hereby reserve, and this lease shall be subject to, the imprescriptible right of surface use in the nature of a servitude in favor of the Department of Natural Resources, including its Offices and Commissions, for the sole purpose of implementing, constructing, servicing and maintaining approved coastal zone management and/or restoration projects. Utilization of any and all rights derived under this lease by the mineral lessee, its agents, successors or assigns, shall not interfere with nor hinder the reasonable surface use by the Department of Natural Resources, its Offices or Commissions, as herein above reserved.

Applicant: ROBERT A. SCHROEDER, INC.

Bidder	Cash Payment	Price/Acre	Rental	Oil	Gas	Other

12010064
 Blocks
 Active_Leas



TRACT 42463 - Portion of Blocks 51, and 52, Breton Sound Area, Plaquemines Parish, Louisiana

All of the lands now or formerly constituting the beds and bottoms of all water bodies of every nature and description as to which title is vested in the State of Louisiana, together with all islands arising therein and other lands formed by accretion or by reliction, where allowed by law, excepting tax adjudicated lands, and not presently under mineral lease on January 11, 2012, situated in Plaquemines Parish, Louisiana, and more particularly described as follows: Beginning at the Southwest corner of Block 51, Breton Sound Area, having Coordinates of X = 2,664,850.00 and Y = 278,080.00; thence North 7,375.00 feet along the West line of said Block 51 to a point having Coordinates of X = 2,664,850.00 and Y = 285,455.00; thence East 5,912.60 feet to a point on the Western boundary of State Lease No. 16890 having Coordinates of X = 2,670,762.60 and Y = 285,455.00; thence along the boundary said State Lease No. 16890 the following courses: South 05 degrees 15 minutes 21 seconds East 1,390.85 feet to point a having Coordinates of X = 2,670,890.00 and Y = 284,070.00; South 87 degrees 28 minutes 59 seconds East 1,821.76 feet to point a having Coordinates of X = 2,672,710.00 and Y = 283,990.00 and North 31 degrees 53 minutes 54 seconds East 1,725.59 feet to point a having Coordinates of X = 2,673,621.83 and Y = 285,455.00; thence East 5,332.78 feet to a point on the Louisiana Coastline, as decreed by the Supreme Court of the United States, as determined by a Special Master appointed therein, in litigation styled *United States v. State of Louisiana et al No. 9 Original*, in 1975, having Coordinates of X = 2,678,954.61 and Y = 285,455.00; thence Southeasterly on a straight line along said Louisiana Coastline to a point on the South line of Block 52, Breton Sound Area, having Coordinates of X = 2,679,742.80 and Y = 278,080.00; thence West 142.80 feet along the South line of said Block 52 to its Southwest corner, also being the Southeast corner of said Block 51 having Coordinates of X = 2,679,600.00 and Y = 278,080.00; thence West 14,750.00 feet along the South line of said Block 51 to the point of beginning, **LESS AND EXCEPT** all of State Lease No. 20436 that lies within the above described tract, being more fully described as follows: Commencing at the point of beginning of the above described nominated tract having Coordinates of X = 2,664,850.00 and Y = 278,080.00; thence North 41 degrees 45 minutes 40 seconds East 4,330.17 feet to the Southwest corner of said State Lease No. 20436 having Coordinates of X = 2,667,734.00 and Y = 281,310.00; thence along the boundary of said State Lease No. 20436 the following courses: North 1,848.00 feet to a point having Coordinates of X = 2,667,734.00 and Y = 283,158.00; East 3,780.00 feet to a point having Coordinates of X = 2,671,514.00 and Y = 283,158.00; South 1,848.00 feet to a point having Coordinates of X = 2,671,514.00 and Y = 281,310.00 and West 3,780.00 feet back to its Southwest corner, the above described nominated tract containing approximately **2,217.47 acres**, all as more particularly outlined on a plat on file in the Office of Mineral Resources, Department of Natural Resources. All bearings, distances and coordinates are based on Louisiana Coordinate System of 1927, (North or South Zone), where applicable.

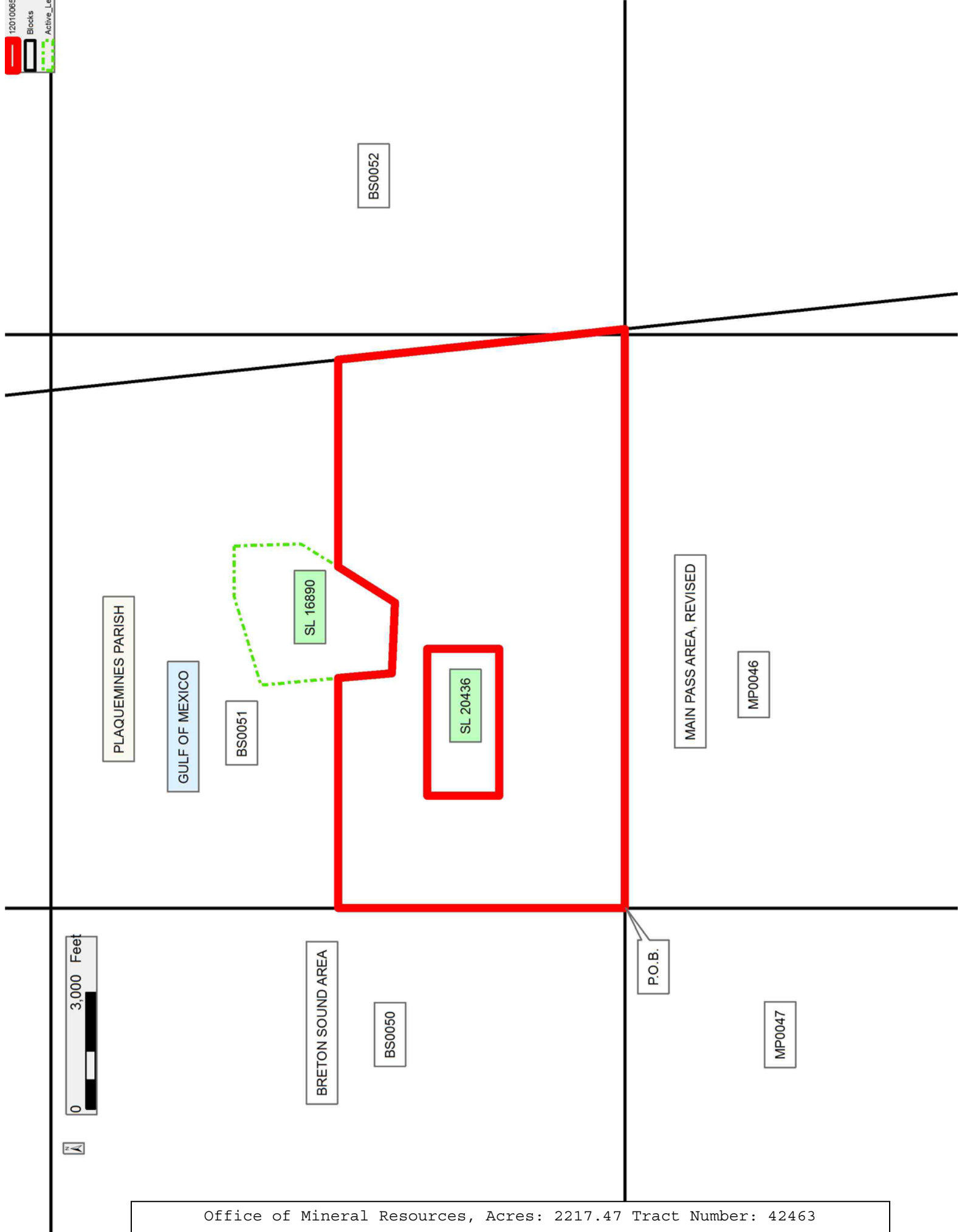
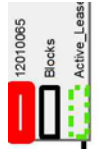
NOTE: The above description of the Tract nominated for lease has been provided and corrected, where required, exclusively by the nomination party. Any mineral lease selected from this Tract and awarded by the Louisiana State Mineral and Energy Board shall be without warranty of any kind, either express, implied, or statutory, including, but not limited to, the implied warranties of merchantability and fitness for a particular purpose. Should the mineral lease awarded by the Louisiana State Mineral and Energy Board be subsequently modified, cancelled or abrogated due to the existence of conflicting leases, operating agreements, private claims or other future obligations or conditions which may affect all or any portion of the leased Tract, it shall not relieve the Lessee of the obligation to pay any bonus due thereon to the Louisiana State Mineral and Energy Board, nor shall the Louisiana State Mineral and Energy Board be obligated to refund any consideration paid by the Lessor prior to such modification, cancellation, or abrogation, including, but not limited to, bonuses, rentals and royalties.

NOTE: The State of Louisiana does hereby reserve, and this lease shall be subject to, the imprescriptible right of surface use in the nature of a servitude in favor of the Department of Natural Resources, including its Offices and Commissions, for the sole purpose of implementing, constructing, servicing and maintaining approved coastal zone management and/or restoration projects. Utilization of any and all rights derived under this lease by the mineral lessee, its agents, successors or assigns, shall not interfere with nor hinder the reasonable surface use by the Department of Natural Resources, its Offices or Commissions, as herein above reserved.

NOTE: This tract is located in an area designated by the Louisiana Legislature or the Wildlife and Fisheries Commission as a Public Oyster Seed Ground, Reservation, or area of Calcasieu or Sabine Lake. Proposed projects occurring in these areas will be evaluated on a case by case basis by Louisiana Department of Wildlife & Fisheries. Modifications to proposed project features including, but not limited to, access routes, well sites, flowlines, and appurtenant structures maybe required by the Louisiana Department of Wildlife and Fisheries. In addition, compensatory mitigation will be required to offset unavoidable habitat impacts.

Bidder	Cash Payment	Price/Acre	Rental	Oil	Gas	Other

Applicant: ROBERT A. SCHROEDER, INC.



PLAQUEMINES PARISH

GULF OF MEXICO

BS0051

SL 16890

BS0052

SL 20436

MAIN PASS AREA, REVISED

MP0046



BRETON SOUND AREA

BS0050

P.O.B.

MP0047

TRACT 42464 - Portion of Block 49, Breton Sound Area, Blocks 36, 48, and 49, Main Pass Area, Revised, Plaquemines Parish, Louisiana

All of the lands now or formerly constituting the beds and bottoms of all water bodies of every nature and description as to which title is vested in the State of Louisiana, together with all islands arising therein and other lands formed by accretion or by reliction, where allowed by law, excepting tax adjudicated lands, and not presently under mineral lease on January 11, 2012, situated in Plaquemines Parish, Louisiana, and more particularly described as follows: Beginning at a point within Block 36, Main Pass Area, Revised, having Coordinates of X = 2,627,965.80 and Y = 285,441.52; thence East 7,384.20 feet to a point on the common boundary line between said Block 36 and Block 49, Breton Sound Area having Coordinates of X = 2,635,350.00 and Y = 285,441.52; thence East 7,365.80 feet to a point having Coordinates of X = 2,642,715.80 and Y = 285,441.52; thence South 7,361.52 feet to a point on the common boundary line of said Block 49 and Block 48, Main Pass Area, Revised, having Coordinates of X = 2,642,715.80 and Y = 278,080.00; thence West 5,273.80 feet along the common block line said Block 49 and Block 48 to a point having Coordinates of X = 2,637,442.00 and Y = 278,080.00; thence South 64.00 feet to the Northeast Corner of State Lease No. 20437 having Coordinates of X = 2,637,442.00 and Y = 278,016.00; thence North 89 degrees 32 minutes 32 seconds West 2,879.09 feet along the North line of said State Lease No. 20437 to it Northwest corner, said corner also being the Northeast corner of State Lease No. 19446 and the Southeast corner of State Lease No. 20762, having Coordinates of X = 2,634,563.00 and Y = 278,039.00; thence along the boundary of said State Lease No. 20762 the following: North 1,311.00 feet to a point having Coordinates of X = 2,634,563.00 and Y = 279,350.00; South 82 degrees 16 minutes 44 seconds West 6,657.56 feet to a point having Coordinates of X = 2,627,965.80 and Y = 278,455.54; thence North 6,985.97 feet to the point of beginning, containing **2,371.57 acres**, all as more particularly outlined on a plat on file in the Office of Mineral Resources, Department of Natural Resources. All bearings, distances and coordinates are based on Louisiana Coordinate System of 1927, (North or South Zone), where applicable.

NOTE: The above description of the Tract nominated for lease has been provided and corrected, where required, exclusively by the nomination party. Any mineral lease selected from this Tract and awarded by the Louisiana State Mineral and Energy Board shall be without warranty of any kind, either express, implied, or statutory, including, but not limited to, the implied warranties of merchantability and fitness for a particular purpose. Should the mineral lease awarded by the Louisiana State Mineral and Energy Board be subsequently modified, cancelled or abrogated due to the existence of conflicting leases, operating agreements, private claims or other future obligations or conditions which may affect all or any portion of the leased Tract, it shall not relieve the Lessee of the obligation to pay any bonus due thereon to the Louisiana State Mineral and Energy Board, nor shall the Louisiana State Mineral and Energy Board be obligated to refund any consideration paid by the Lessor prior to such

modification, cancellation, or abrogation, including, but not limited to, bonuses, rentals and royalties.

NOTE: The Office of Mineral Resources will require a minimum bonus of \$250 per acre and a minimum royalty of 21.5%.

NOTE: The State of Louisiana does hereby reserve, and this lease shall be subject to, the imprescriptible right of surface use in the nature of a servitude in favor of the Department of Natural Resources, including its Offices and Commissions, for the sole purpose of implementing, constructing, servicing and maintaining approved coastal zone management and/or restoration projects. Utilization of any and all rights derived under this lease by the mineral lessee, its agents, successors or assigns, shall not interfere with nor hinder the reasonable surface use by the Department of Natural Resources, its Offices or Commissions, as herein above reserved.

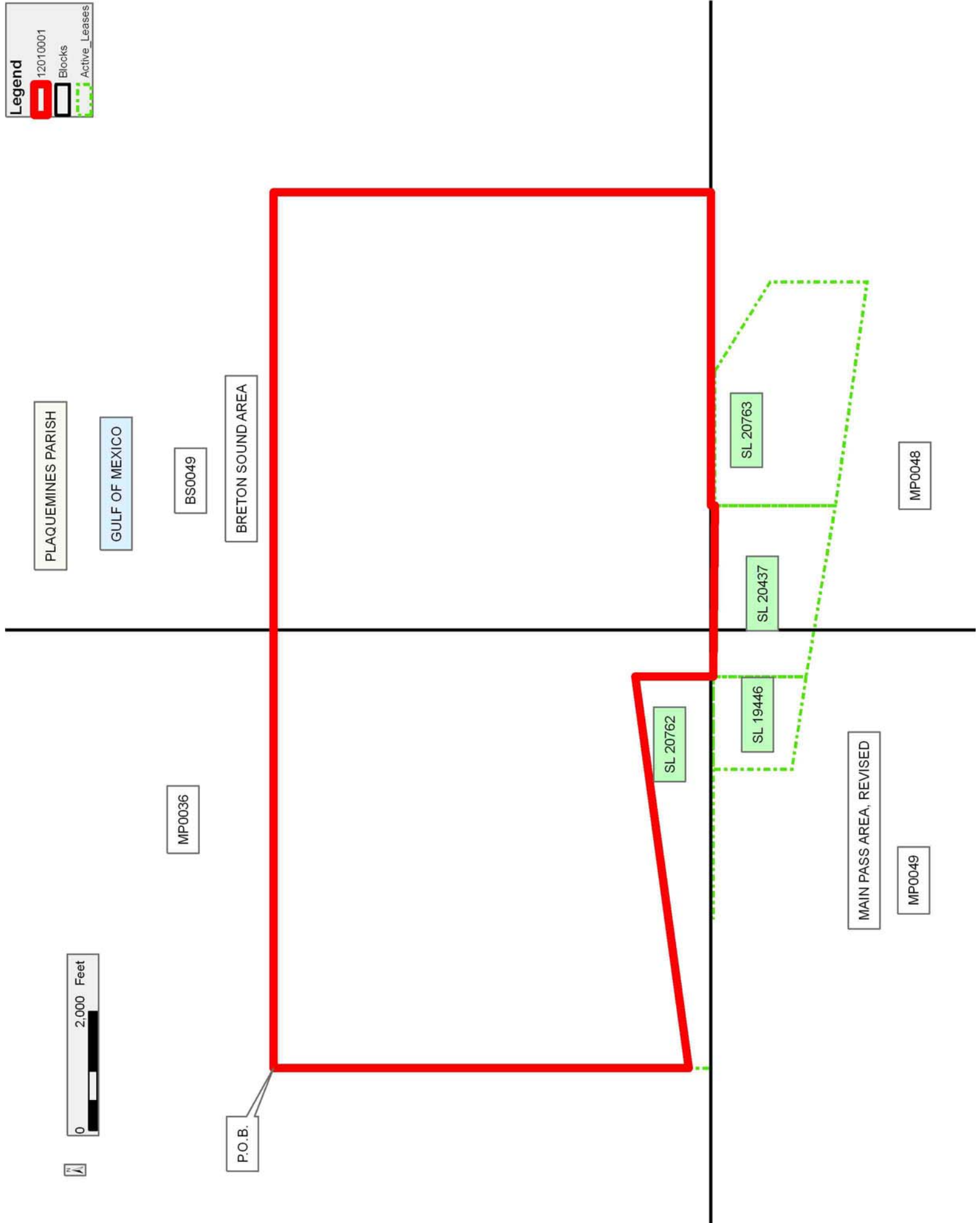
NOTE: This tract is located in an area designated by the Louisiana Legislature or the Wildlife and Fisheries Commission as a Public Oyster Seed Ground, Reservation, or area of Calcasieu or Sabine Lake. Proposed projects occurring in these areas will be evaluated on a case by case basis by Louisiana Department of Wildlife & Fisheries. Modifications to proposed project features including, but not limited to, access routes, well sites, flowlines, and appurtenant structures maybe required by the Louisiana Department of Wildlife and Fisheries. In addition, compensatory mitigation will be required to offset unavoidable habitat impacts.

Applicant: STAFF OFFICE OF MINERAL RESOURCES

Bidder	Cash Payment	Price/Acre	Rental	Oil	Gas	Other

Legend

- 12010001
- Blocks
- Active_Leases



TRACT 42465 - Portion of Blocks 49, and 50, Breton Sound Area, Blocks 47, and 48, Main Pass Area, Revised, Plaquemines Parish, Louisiana

All of the lands now or formerly constituting the beds and bottoms of all water bodies of every nature and description as to which title is vested in the State of Louisiana, together with all islands arising therein and other lands formed by accretion or by reliction, where allowed by law, excepting tax adjudicated lands, and not presently under mineral lease on January 11, 2012, situated in Plaquemines Parish, Louisiana, and more particularly described as follows: Beginning at a point having Coordinates of X = 2,644,054.89 and Y = 284,433.24; thence South 89 degrees 59 minutes 57 seconds East 13,051.28 feet to a point having Coordinates of X = 2,657,106.17 and Y = 284,433.04; thence South 6,352.85 feet to a point having Coordinates of X = 2,657,106.17 and Y = 278,080.18; thence North 89 degrees 59 minutes 55 seconds West 2,756.17 feet to a point on the Eastern boundary of State Lease No. 16393 having Coordinates of X = 2,654,350.00 and Y = 278,080.25; thence along the boundaries of said State Lease No. 16393 the following courses: North 1,999.75 feet to a point having Coordinates of X = 2,654,350.00 and Y = 280,080.00, West 3,800.00 feet to a point having Coordinates of X = 2,650,550.00 and Y = 280,080.00 and South 1,999.66 feet to a point on its Western boundary having Coordinates of X = 2,650,550.00 and Y = 278,080.34; thence South 89 degrees 44 minutes 40 seconds West 6,494.77 feet to a point having Coordinates of X = 2,644,055.29 and Y = 278,051.37; thence North 00 degrees 00 minutes 13 seconds West 6,381.87 feet to the point of beginning, containing approximately **1,731.10 acres**, all as more particularly outlined on a plat on file in the Office of Mineral Resources, Department of Natural Resources. All bearings, distances and coordinates are based on Louisiana Coordinate System of 1927, (North or South Zone), where applicable.

NOTE: The above description of the Tract nominated for lease has been provided and corrected, where required, exclusively by the nomination party. Any mineral lease selected from this Tract and awarded by the Louisiana State Mineral and Energy Board shall be without warranty of any kind, either express, implied, or statutory, including, but not limited to, the implied warranties of merchantability and fitness for a particular purpose. Should the mineral lease awarded by the Louisiana State Mineral and Energy Board be subsequently modified, cancelled or abrogated due to the existence of conflicting leases, operating agreements, private claims or other future obligations or conditions which may affect all or any portion of the leased Tract, it shall not relieve the Lessee of the obligation to pay any bonus due thereon to the Louisiana State Mineral and Energy Board, nor shall the Louisiana State Mineral and Energy Board be obligated to refund any consideration paid by the Lessor prior to such modification, cancellation, or abrogation, including, but not limited to, bonuses, rentals and royalties.

NOTE: The State of Louisiana does hereby reserve, and this lease shall be subject to, the imprescriptible right of surface use in the nature of a servitude in favor of the Department of Natural Resources, including its

Offices and Commissions, for the sole purpose of implementing, constructing, servicing and maintaining approved coastal zone management and/or restoration projects. Utilization of any and all rights derived under this lease by the mineral lessee, its agents, successors or assigns, shall not interfere with nor hinder the reasonable surface use by the Department of Natural Resources, its Offices or Commissions, as herein above reserved.

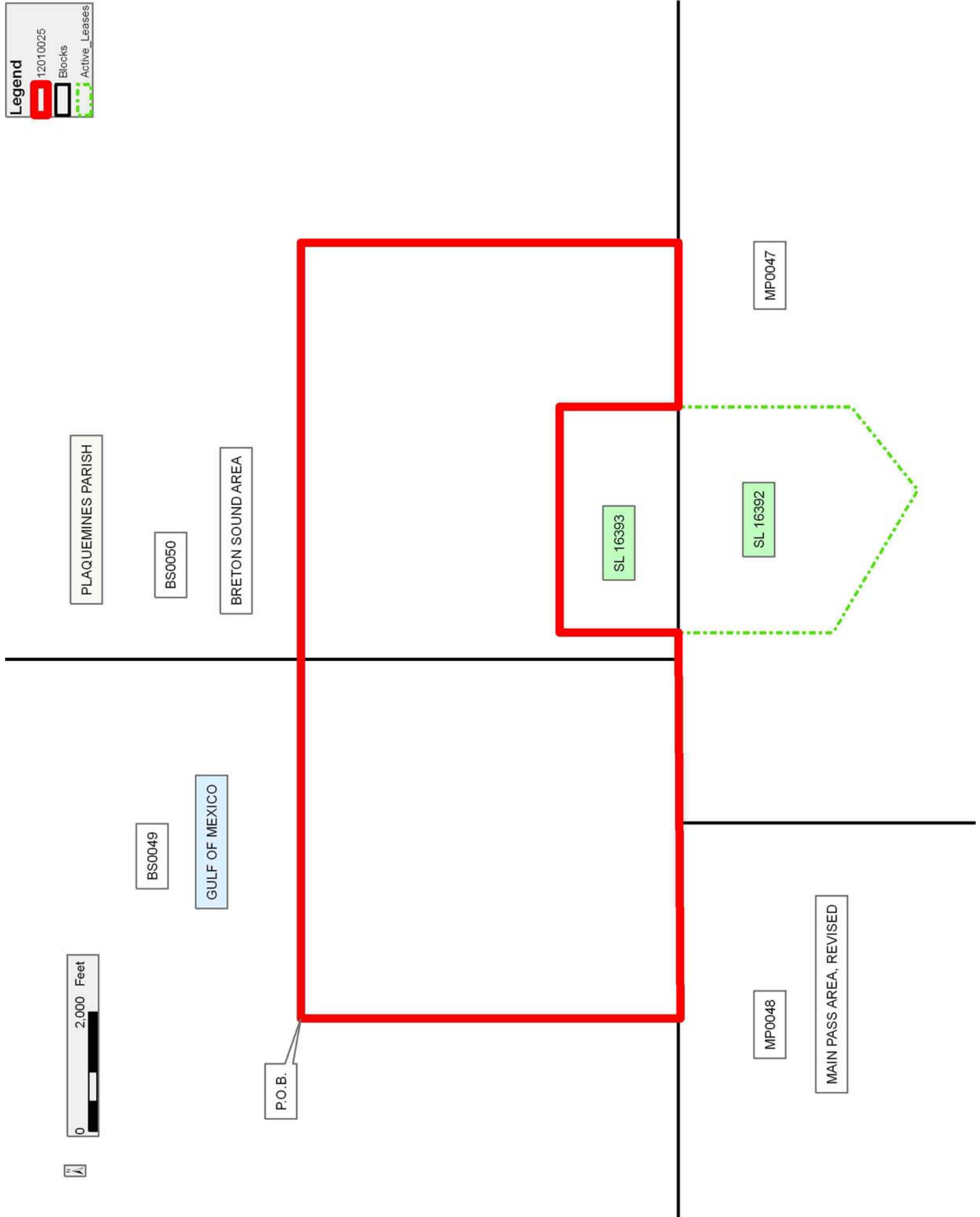
NOTE: This tract is located in an area designated by the Louisiana Legislature or the Wildlife and Fisheries Commission as a Public Oyster Seed Ground, Reservation, or area of Calcasieu or Sabine Lake. Proposed projects occurring in these areas will be evaluated on a case by case basis by Louisiana Department of Wildlife & Fisheries. Modifications to proposed project features including, but not limited to, access routes, well sites, flowlines, and appurtenant structures maybe required by the Louisiana Department of Wildlife and Fisheries. In addition, compensatory mitigation will be required to offset unavoidable habitat impacts.

Applicant: CYPRESS ENERGY CORPORATION

Bidder	Cash Payment	Price/Acre	Rental	Oil	Gas	Other

Legend

- 12010025
- Blocks
- Active_Leases



TRACT 42466 - Portion of Blocks 47, 48, and 52, Main Pass Area, Revised, Plaquemines Parish, Louisiana

All of the lands now or formerly constituting the beds and bottoms of all water bodies of every nature and description as to which title is vested in the State of Louisiana, together with all islands arising therein and other lands formed by accretion or by reliction, where allowed by law, excepting tax adjudicated lands, and not presently under mineral lease on January 11, 2012, situated in Plaquemines Parish, Louisiana, and more particularly described as follows: Beginning at a point having Coordinates of X = 2,644,055.29 and Y = 278,051.37; thence North 89 degrees 44 minutes 40 seconds East 6,494.77 feet to a point on the Western boundary of State Lease No. 16393 having Coordinates of X = 2,650,550.00 and Y = 278,080.34; thence South 0.34 feet along the Western boundary of said State Lease No. 16393 to its Southwest corner having Coordinates of X = 2,650,550.00 and Y = 278,080.00, said point also being the Northwest corner of State Lease No. 16392; thence South 2,600.00 feet along the West boundary of said State Lease No. 16392 to its Southwest corner, also being the Northwest corner of State Lease No. 16570 having Coordinates of X = 2,650,550.00 and Y = 275,480.00; thence along the boundaries of said State Lease No. 16570 the following courses: South 258.57 feet to a point having Coordinates of X = 2,650,550.00 and Y = 275,221.43, South 59 degrees 15 minutes 06 seconds East 4,168.83 feet to a point having Coordinates of X = 2,654,132.78 and Y = 273,090.04 and East 1,177.47 feet to its Southeast corner having Coordinates of X = 2,655,310.25 and Y = 273,090.04; thence South 1,610.04 feet to a point on the North boundary of State Lease No. 1268 having Coordinates of X = 2,655,310.25 and Y = 271,480.00; thence along the boundaries of said State Lease No. 1268 the following courses: West 5,285.25 feet to a point having Coordinates of X = 2,650,025.00 and Y = 271,480.00, South 5,400.00 feet to a point having Coordinates of X = 2,650,025.00 and Y = 266,080.00 and East 2,725.00 feet to a point having Coordinates of X = 2,652,750.00 and Y = 266,080.00, being the Northwest corner of State Lease No. 16664; thence South 50.00 feet along the West boundary of said State Lease No. 16664 to the Northeast corner of State Lease No. 19489 having Coordinates of X = 2,652,750.00 and Y = 266,030.00; thence West 7,399.00 feet along the North boundary of said State Lease No. 19489 to its Northwest corner having Coordinates of X = 2,645,351.00 and Y = 266,030.00; thence West 1,294.95 feet to a point having Coordinates of X = 2,644,056.05 and Y = 266,030.00; thence North 00 degrees 00 minutes 13 seconds West 12,021.37 feet to the point of beginning, containing approximately **1,995.46 acres**, all as more particularly outlined on a plat on file in the Office of Mineral Resources, Department of Natural Resources. All bearings, distances and coordinates are based on Louisiana Coordinate System of 1927, (North or South Zone), where applicable.

NOTE: The above description of the Tract nominated for lease has been provided and corrected, where required, exclusively by the nomination party. Any mineral lease selected from this Tract and awarded by the Louisiana State Mineral and Energy Board shall be without warranty of any kind, either express, implied, or statutory, including, but not limited

to, the implied warranties of merchantability and fitness for a particular purpose. Should the mineral lease awarded by the Louisiana State Mineral and Energy Board be subsequently modified, cancelled or abrogated due to the existence of conflicting leases, operating agreements, private claims or other future obligations or conditions which may affect all or any portion of the leased Tract, it shall not relieve the Lessee of the obligation to pay any bonus due thereon to the Louisiana State Mineral and Energy Board, nor shall the Louisiana State Mineral and Energy Board be obligated to refund any consideration paid by the Lessor prior to such modification, cancellation, or abrogation, including, but not limited to, bonuses, rentals and royalties.

NOTE: The State of Louisiana does hereby reserve, and this lease shall be subject to, the imprescriptible right of surface use in the nature of a servitude in favor of the Department of Natural Resources, including its Offices and Commissions, for the sole purpose of implementing, constructing, servicing and maintaining approved coastal zone management and/or restoration projects. Utilization of any and all rights derived under this lease by the mineral lessee, its agents, successors or assigns, shall not interfere with nor hinder the reasonable surface use by the Department of Natural Resources, its Offices or Commissions, as herein above reserved.

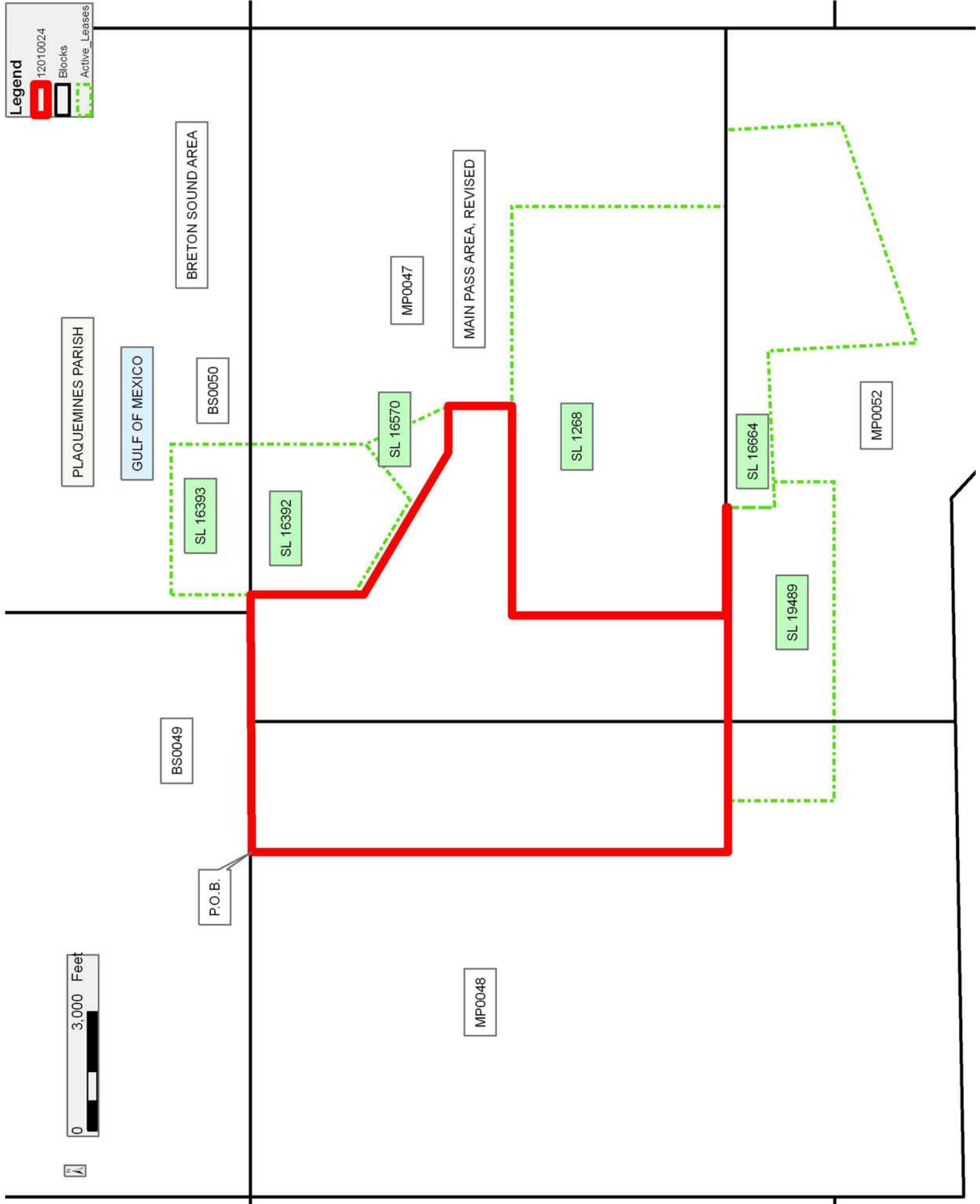
NOTE: This tract is located in an area designated by the Louisiana Legislature or the Wildlife and Fisheries Commission as a Public Oyster Seed Ground, Reservation, or area of Calcasieu or Sabine Lake. Proposed projects occurring in these areas will be evaluated on a case by case basis by Louisiana Department of Wildlife & Fisheries. Modifications to proposed project features including, but not limited to, access routes, well sites, flowlines, and appurtenant structures maybe required by the Louisiana Department of Wildlife and Fisheries. In addition, compensatory mitigation will be required to offset unavoidable habitat impacts.

Applicant: CYPRESS ENERGY CORPORATION

Bidder	Cash Payment	Price/Acre	Rental	Oil	Gas	Other

Legend

- 12010024 (Red outline)
- Blocks (Black outline)
- Active_Leases (Green dashed outline)



TRACT 42467 - Portion of Block 47, Main Pass Area, Revised, Plaquemines Parish, Louisiana

All of the lands now or formerly constituting the beds and bottoms of all water bodies of every nature and description as to which title is vested in the State of Louisiana, together with all islands arising therein and other lands formed by accretion or by reliction, where allowed by law, excepting tax adjudicated lands, and not presently under mineral lease on January 11, 2012, situated in Plaquemines Parish, Louisiana, and more particularly described as follows: Beginning at a point on the Eastern boundary of State Lease No. 16393 having Coordinates of X = 2,654,350.00 and Y = 278,080.25; thence South 89 degrees 59 minutes 55 seconds East 10,501.99 feet to a point having Coordinates of X = 2,664,851.99 and Y = 278,080.00; thence South 00 degrees 00 minutes 35 seconds West 12,000.00 feet to a point having Coordinates of X = 2,664,849.97 and Y = 266,080.00; thence West 4,499.97 to a point being the Southeast corner of State Lease No. 1268 having Coordinates of X = 2,660,350.00 and Y = 266,080.00; thence along the boundaries of said State Lease No. 1268 the following courses: North 5,400.00 feet to a point having Coordinates of X = 2,660,350.00 and Y = 271,480.00 and West 5,039.75 feet to a point having Coordinates of X = 2,655,310.25 and Y = 271,480.00; thence North 1,610.04 feet to the Southeast corner of State Lease No. 16570 having Coordinates of X = 2,655,310.25 and Y = 273,090.04; thence North 24 degrees 40 minutes 37 seconds West 2,300.00 feet along the East boundary of said State Lease No. 16570 to its Northeast corner having Coordinates of X = 2,654,350.00 and Y = 275,180.00, also being the Southeast corner of said State Lease No. 16392; thence North 2,900.00 feet along the East boundary of said State Lease No. 16392 to its Northeast corner, said point also being the Southeast corner of said State Lease No. 16393 having Coordinates of X = 2,654,350.00 and Y = 278,080.00; thence North 0.25 feet to the point of beginning, containing approximately **2,090.53 acres**, all as more particularly outlined on a plat on file in the Office of Mineral Resources, Department of Natural Resources. All bearings, distances and coordinates are based on Louisiana Coordinate System of 1927, (North or South Zone), where applicable.

NOTE: The above description of the Tract nominated for lease has been provided and corrected, where required, exclusively by the nomination party. Any mineral lease selected from this Tract and awarded by the Louisiana State Mineral and Energy Board shall be without warranty of any kind, either express, implied, or statutory, including, but not limited to, the implied warranties of merchantability and fitness for a particular purpose. Should the mineral lease awarded by the Louisiana State Mineral and Energy Board be subsequently modified, cancelled or abrogated due to the existence of conflicting leases, operating agreements, private claims or other future obligations or conditions which may affect all or any portion of the leased Tract, it shall not relieve the Lessee of the obligation to pay any bonus due thereon to the Louisiana State Mineral and Energy Board, nor shall the Louisiana State Mineral and Energy Board be obligated to refund any consideration paid by the Lessor prior to such

modification, cancellation, or abrogation, including, but not limited to, bonuses, rentals and royalties.

NOTE: The State of Louisiana does hereby reserve, and this lease shall be subject to, the imprescriptible right of surface use in the nature of a servitude in favor of the Department of Natural Resources, including its Offices and Commissions, for the sole purpose of implementing, constructing, servicing and maintaining approved coastal zone management and/or restoration projects. Utilization of any and all rights derived under this lease by the mineral lessee, its agents, successors or assigns, shall not interfere with nor hinder the reasonable surface use by the Department of Natural Resources, its Offices or Commissions, as herein above reserved.

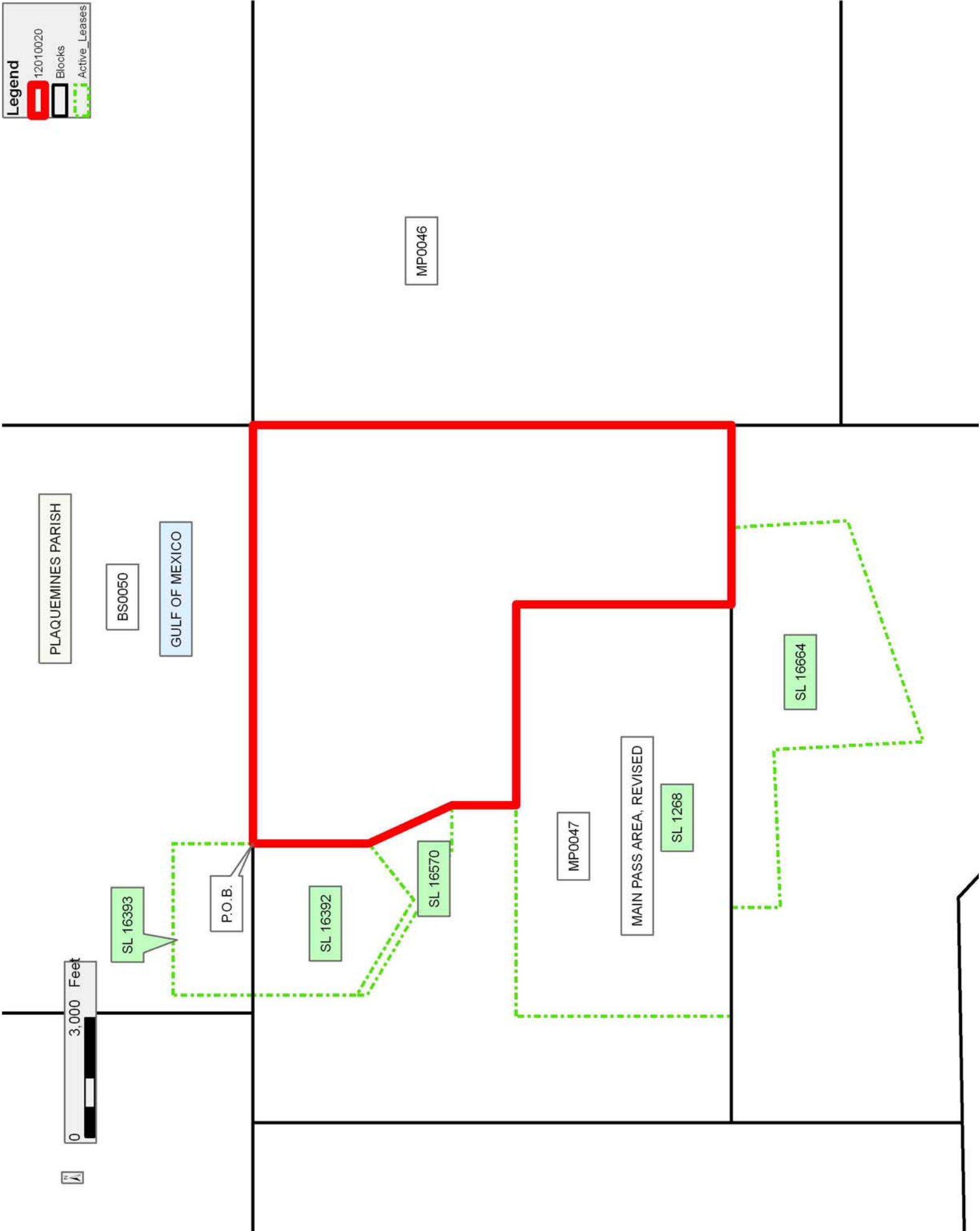
NOTE: This tract is located in an area designated by the Louisiana Legislature or the Wildlife and Fisheries Commission as a Public Oyster Seed Ground, Reservation, or area of Calcasieu or Sabine Lake. Proposed projects occurring in these areas will be evaluated on a case by case basis by Louisiana Department of Wildlife & Fisheries. Modifications to proposed project features including, but not limited to, access routes, well sites, flowlines, and appurtenant structures maybe required by the Louisiana Department of Wildlife and Fisheries. In addition, compensatory mitigation will be required to offset unavoidable habitat impacts.

Applicant: CYPRESS ENERGY CORPORATION

Bidder	Cash Payment	Price/Acre	Rental	Oil	Gas	Other

Legend

- 12010020
- Blocks
- Active_Leases



TRACT 42468 - Portion of Block 46, Main Pass Area, Revised, Plaquemines Parish, Louisiana

All of the lands now or formerly constituting the beds and bottoms of all water bodies of every nature and description as to which title is vested in the State of Louisiana, together with all islands arising therein and other lands formed by accretion or by reliction, where allowed by law, excepting tax adjudicated lands, and not presently under mineral lease on January 11, 2012, situated in Plaquemines Parish, Louisiana, and more particularly described as follows: Beginning at a point having Coordinates of X = 2,664,851.99 and Y = 278,080.00; thence South 89 degrees 59 minutes 57 seconds East 6,625.26 feet to a point having Coordinates of X = 2,671,477.25 and Y = 278,079.90; thence South 11,927.87 feet to a point on the North boundary of State Lease No. 20034 having Coordinates of X = 2,671,477.25 and Y = 266,152.03; thence along the boundaries of said State Lease No. 20034 the following courses: South 71 degrees 56 minutes 37 seconds West 1,649.64 feet to a point having Coordinates of X = 2,669,908.85 and Y = 265,640.72, South 74 degrees 56 minutes 32 seconds West 1,629.29 feet to a point having Coordinates of X = 2,668,335.50 and Y = 265,217.44, South 15 degrees 03 minutes 28 seconds East 900.43 feet to a point having Coordinates of X = 2,668,569.42 and Y = 264,347.93, South 15 degrees 03 minutes 28 seconds East 231.09 feet to a point having Coordinates of X = 2,668,629.46 and Y = 264,124.77 and South 15 degrees 03 minutes 28 seconds East 822.45 feet to a point having Coordinates of X = 2,668,843.13 and Y = 263,330.56; thence West 3,993.62 feet to a point having Coordinates of X = 2,664,849.51 and Y = 263,330.56; thence North 00 degrees 00 minutes 35 seconds East 14,749.44 feet to the point of beginning, containing approximately **2086.54 acres**, all as more particularly outlined on a plat on file in the Office of Mineral Resources, Department of Natural Resources. All bearings, distances and coordinates are based on Louisiana Coordinate System of 1927, (North or South Zone), where applicable.

NOTE: The above description of the Tract nominated for lease has been provided and corrected, where required, exclusively by the nomination party. Any mineral lease selected from this Tract and awarded by the Louisiana State Mineral and Energy Board shall be without warranty of any kind, either express, implied, or statutory, including, but not limited to, the implied warranties of merchantability and fitness for a particular purpose. Should the mineral lease awarded by the Louisiana State Mineral and Energy Board be subsequently modified, cancelled or abrogated due to the existence of conflicting leases, operating agreements, private claims or other future obligations or conditions which may affect all or any portion of the leased Tract, it shall not relieve the Lessee of the obligation to pay any bonus due thereon to the Louisiana State Mineral and Energy Board, nor shall the Louisiana State Mineral and Energy Board be obligated to refund any consideration paid by the Lessor prior to such modification, cancellation, or abrogation, including, but not limited to, bonuses, rentals and royalties.

NOTE: The State of Louisiana does hereby reserve, and this lease shall be subject to, the imprescriptible right of surface use in the nature of a servitude in favor of the Department of Natural Resources, including its Offices and Commissions, for the sole purpose of implementing, constructing, servicing and maintaining approved coastal zone management and/or restoration projects. Utilization of any and all rights derived under this lease by the mineral lessee, its agents, successors or assigns, shall not interfere with nor hinder the reasonable surface use by the Department of Natural Resources, its Offices or Commissions, as herein above reserved.

NOTE: This tract is located in an area designated by the Louisiana Legislature or the Wildlife and Fisheries Commission as a Public Oyster Seed Ground, Reservation, or area of Calcasieu or Sabine Lake. Proposed projects occurring in these areas will be evaluated on a case by case basis by Louisiana Department of Wildlife & Fisheries. Modifications to proposed project features including, but not limited to, access routes, well sites, flowlines, and appurtenant structures maybe required by the Louisiana Department of Wildlife and Fisheries. In addition, compensatory mitigation will be required to offset unavoidable habitat impacts.

Applicant: CYPRESS ENERGY CORPORATION

Bidder	Cash Payment	Price/Acre	Rental	Oil	Gas	Other

Legend

- 12010021
- Blocks
- Active_Leases

PLAQUEMINES PARISH

BS0051

MP0046

GULF OF MEXICO

MAIN PASS AREA, REVISED

SL 20034

P.O.B.

MP0047



TRACT 42469 - Portion of Blocks 45, and 46, Main Pass Area, Revised, Plaquemines Parish, Louisiana

All of the lands now or formerly constituting the beds and bottoms of all water bodies of every nature and description as to which title is vested in the State of Louisiana, together with all islands arising therein and other lands formed by accretion or by reliction, where allowed by law, excepting tax adjudicated lands, and not presently under mineral lease on January 11, 2012, situated in Plaquemines Parish, Louisiana, and more particularly described as follows: Beginning at a point having Coordinates of X = 2,671,477.25 and Y = 278,079.90; thence South 89 degrees 59 minutes 57 seconds East 8,265.58 feet to a point on the Louisiana Coastline, as decreed by the Supreme Court of the United States, as determined by a Special Master appointed therein, in litigation styled *United States v. State of Louisiana et al No. 9 Original*, in 1975, having Coordinates of X = 2,679,742.83 and Y = 278,079.77; thence Southeasterly along said Coastline to a point having Coordinates of X = 2,681,052.09 and Y = 265,829.15; thence West 8,217.48 feet to a point on the East boundary of State Lease No. 20034 having Coordinates of X = 2,672,834.61 and Y = 265,829.15; thence along the boundaries of said State Lease No. 20034 the following courses: North 15 degrees 00 minutes 32 seconds West 728.72 feet to a point having Coordinates of X = 2,672,645.89 and Y = 266,533.01 and South 71 degrees 56 minutes 37 seconds West 1,229.17 feet to a point having Coordinates of X = 2,671,477.25 and Y = 266,152.03; thence North 11,927.87 feet to the point of beginning, containing approximately **2493.39 acres**, all as more particularly outlined on a plat on file in the Office of Mineral Resources, Department of Natural Resources. All bearings, distances and coordinates are based on Louisiana Coordinate System of 1927, (North or South Zone), where applicable.

NOTE: The above description of the Tract nominated for lease has been provided and corrected, where required, exclusively by the nomination party. Any mineral lease selected from this Tract and awarded by the Louisiana State Mineral and Energy Board shall be without warranty of any kind, either express, implied, or statutory, including, but not limited to, the implied warranties of merchantability and fitness for a particular purpose. Should the mineral lease awarded by the Louisiana State Mineral and Energy Board be subsequently modified, cancelled or abrogated due to the existence of conflicting leases, operating agreements, private claims or other future obligations or conditions which may affect all or any portion of the leased Tract, it shall not relieve the Lessee of the obligation to pay any bonus due thereon to the Louisiana State Mineral and Energy Board, nor shall the Louisiana State Mineral and Energy Board be obligated to refund any consideration paid by the Lessor prior to such modification, cancellation, or abrogation, including, but not limited to, bonuses, rentals and royalties.

NOTE: The State of Louisiana does hereby reserve, and this lease shall be subject to, the imprescriptible right of surface use in the nature of a servitude in favor of the Department of Natural Resources, including its

Offices and Commissions, for the sole purpose of implementing, constructing, servicing and maintaining approved coastal zone management and/or restoration projects. Utilization of any and all rights derived under this lease by the mineral lessee, its agents, successors or assigns, shall not interfere with nor hinder the reasonable surface use by the Department of Natural Resources, its Offices or Commissions, as herein above reserved.

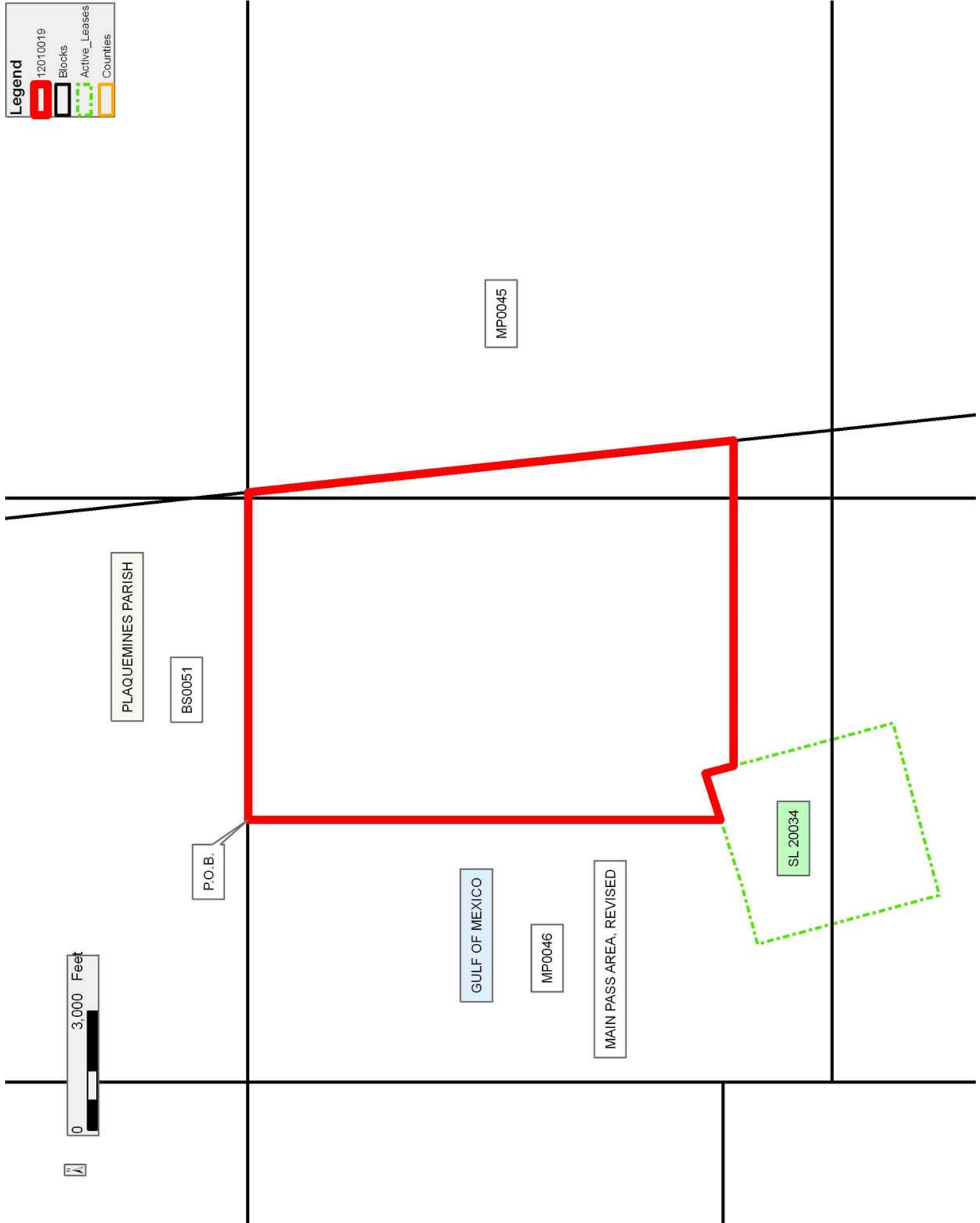
NOTE: This tract is located in an area designated by the Louisiana Legislature or the Wildlife and Fisheries Commission as a Public Oyster Seed Ground, Reservation, or area of Calcasieu or Sabine Lake. Proposed projects occurring in these areas will be evaluated on a case by case basis by Louisiana Department of Wildlife & Fisheries. Modifications to proposed project features including, but not limited to, access routes, well sites, flowlines, and appurtenant structures maybe required by the Louisiana Department of Wildlife and Fisheries. In addition, compensatory mitigation will be required to offset unavoidable habitat impacts.

Applicant: CYPRESS ENERGY CORPORATION

Bidder	Cash Payment	Price/Acre	Rental	Oil	Gas	Other

Legend

- 12010019
- Blocks
- Active_Leases
- Counties



TRACT 42470 - Portion of Blocks 48, and 49, Main Pass Area, Revised, Plaquemines Parish, Louisiana

All of the lands now or formerly constituting the beds and bottoms of all water bodies of every nature and description as to which title is vested in the State of Louisiana, together with all islands arising therein and other lands formed by accretion or by reliction, where allowed by law, excepting tax adjudicated lands, and not presently under mineral lease on January 11, 2012, situated in Plaquemines Parish, Louisiana, and more particularly described as follows: Beginning at the Northeast corner of State Lease No. 20160 also being a point on the South boundary of State Lease No. 20437 having Coordinates of X = 2,635,001.00 and Y = 276,403.00; thence South 80 degrees 17 minutes 00 seconds East 2,476.53 feet along the South boundary of said State Lease No. 20437 to its Southeast corner also being the Southwest corner of State Lease No. 20763 having Coordinates of X = 2,637,442.00 and Y = 275,985.02; thence along the boundaries of said State Lease No. 20763 the following courses: South 81 degrees 55 minutes 45 seconds East 3,803.67 feet to a point having Coordinates of X = 2,641,208.00 and Y = 275,451.00, North 1,631.00 feet to a point having Coordinates of X = 2,641,208.00 and Y = 277,082.00 and North 58 degrees 13 minutes 29 seconds West 1,767.98 feet to its Northeast corner having Coordinates of X = 2,639,705.00 and Y = 278,013.00; thence North 89 degrees 29 minutes 41 seconds East 4,350.46 feet to a point having Coordinates of X = 2,644,055.29 and Y = 278,051.37; thence South 00 degrees 00 minutes 13 seconds East 12,021.37 feet to a point having Coordinates of X = 2,644,056.05 and Y = 266,030.00; thence West 4,631.30 feet to a point on the East boundary of the Price Case having Coordinates of X = 2,639,424.74 and Y = 266,030.00; thence along the East boundaries of said Price Case the following courses: North 41 degrees 40 minutes 00 seconds West 668.06 feet, North 52 degrees 45 minutes 00 seconds West 1,195.00 feet, North 46 degrees 15 minutes 00 seconds West 1,381.75 feet, North 62 degrees 35 minutes 00 seconds West 1,894.00 feet and North 65 degrees 30 minutes 00 seconds West 383.54 feet to a point having Coordinates of X = 2,635,001.00 and Y = 269,239.04; thence North 6,161.96 feet to the Southeast corner of said State Lease No. 20160 having Coordinates of X = 2,635,001.00 and Y = 275,401.00; thence North 1002.00 feet along the East boundary of said State Lease No. 20160 to the point of beginning, **LESS AND EXCEPT** that portion, if any, of the Price Case that may lie within the above described tract, containing approximately **2,022.24 acres**, all as more particularly outlined on a plat on file in the Office of Mineral Resources, Department of Natural Resources. All bearings, distances and coordinates are based on Louisiana Coordinate System of 1927, (North or South Zone), where applicable.

NOTE: The above description of the Tract nominated for lease has been provided and corrected, where required, exclusively by the nomination party. Any mineral lease selected from this Tract and awarded by the Louisiana State Mineral and Energy Board shall be without warranty of any kind, either express, implied, or statutory, including, but not limited to, the implied warranties of merchantability and fitness for a particular

purpose. Should the mineral lease awarded by the Louisiana State Mineral and Energy Board be subsequently modified, cancelled or abrogated due to the existence of conflicting leases, operating agreements, private claims or other future obligations or conditions which may affect all or any portion of the leased Tract, it shall not relieve the Lessee of the obligation to pay any bonus due thereon to the Louisiana State Mineral and Energy Board, nor shall the Louisiana State Mineral and Energy Board be obligated to refund any consideration paid by the Lessor prior to such modification, cancellation, or abrogation, including, but not limited to, bonuses, rentals and royalties.

NOTE: The State of Louisiana does hereby reserve, and this lease shall be subject to, the imprescriptible right of surface use in the nature of a servitude in favor of the Department of Natural Resources, including its Offices and Commissions, for the sole purpose of implementing, constructing, servicing and maintaining approved coastal zone management and/or restoration projects. Utilization of any and all rights derived under this lease by the mineral lessee, its agents, successors or assigns, shall not interfere with nor hinder the reasonable surface use by the Department of Natural Resources, its Offices or Commissions, as herein above reserved.

NOTE: This tract is located in an area designated by the Louisiana Legislature or the Wildlife and Fisheries Commission as a Public Oyster Seed Ground, Reservation, or area of Calcasieu or Sabine Lake. Proposed projects occurring in these areas will be evaluated on a case by case basis by Louisiana Department of Wildlife & Fisheries. Modifications to proposed project features including, but not limited to, access routes, well sites, flowlines, and appurtenant structures maybe required by the Louisiana Department of Wildlife and Fisheries. In addition, compensatory mitigation will be required to offset unavoidable habitat impacts.

Applicant: CYPRESS ENERGY CORPORATION

Bidder	Cash Payment	Price/Acre	Rental	Oil	Gas	Other

PLAQUEMINES PARISH

MP0048

MAIN PASS AREA, REVISED

P.O.B.

SL 20763

SL 20437

PRICE CASE

SL 20160

GULF OF MEXICO

MP0049



TRACT 42471 - Portion of Blocks 45, 46, 53, and 54, Main Pass Area, Revised, Plaquemines Parish, Louisiana

All of the lands now or formerly constituting the beds and bottoms of all water bodies of every nature and description as to which title is vested in the State of Louisiana, together with all islands arising therein and other lands formed by accretion or by reliction, where allowed by law, excepting tax adjudicated lands, and not presently under mineral lease on January 11, 2012, situated in Plaquemines Parish, Louisiana, and more particularly described as follows: Beginning at a point on the East boundary of State Lease No. 20034 having Coordinates of X = 2,672,834.61 and Y = 265,829.15; thence West 8,217.48 feet to a point on the Louisiana Coastline, as decreed by the Supreme Court of the United States, as determined by a Special Master appointed therein, in litigation styled *United States v. State of Louisiana et al No. 9 Original*, in 1975, having Coordinates of X = 2,681,052.09 and Y = 265,829.15; thence along the boundaries of said Coastline the following courses: Southeasterly to a point having Coordinates of X = 2,681,915 and Y = 257,755 and Southeasterly to a point having Coordinates of X = 2,683,575.42 and Y = 256,299.50; thence West 12,133.28 feet to a point having Coordinates of X = 2,671,442.14 and Y = 256,299.50; thence North 4,834.83 feet to a point on the South boundary of said State Lease No. 20034 having Coordinates of X = 2,671,442.14 and Y = 261,134.33; thence along the boundaries of said State Lease No. 20034 the following courses: North 74 degrees 56 minutes 32 seconds East 2,560.78 feet to a point having Coordinate X = 2,673,915.00 and Y = 261,799.60, North 15 degrees 00 minutes 32 seconds West 1,584.45 feet to a point having Coordinates of X = 2,673,504.67 and Y = 263,330.00 and North 15 degrees 00 minutes 32 seconds West 2,587.42 feet to the point of beginning, containing approximately **2,041.26 acres**, all as more particularly outlined on a plat on file in the Office of Mineral Resources, Department of Natural Resources. All bearings, distances and coordinates are based on Louisiana Coordinate System of 1927, (North or South Zone), where applicable.

NOTE: The above description of the Tract nominated for lease has been provided and corrected, where required, exclusively by the nomination party. Any mineral lease selected from this Tract and awarded by the Louisiana State Mineral and Energy Board shall be without warranty of any kind, either express, implied, or statutory, including, but not limited to, the implied warranties of merchantability and fitness for a particular purpose. Should the mineral lease awarded by the Louisiana State Mineral and Energy Board be subsequently modified, cancelled or abrogated due to the existence of conflicting leases, operating agreements, private claims or other future obligations or conditions which may affect all or any portion of the leased Tract, it shall not relieve the Lessee of the obligation to pay any bonus due thereon to the Louisiana State Mineral and Energy Board, nor shall the Louisiana State Mineral and Energy Board be obligated to refund any consideration paid by the Lessor prior to such modification, cancellation, or abrogation, including, but not limited to, bonuses, rentals and royalties.

NOTE: The State of Louisiana does hereby reserve, and this lease shall be subject to, the imprescriptible right of surface use in the nature of a servitude in favor of the Department of Natural Resources, including its Offices and Commissions, for the sole purpose of implementing, constructing, servicing and maintaining approved coastal zone management and/or restoration projects. Utilization of any and all rights derived under this lease by the mineral lessee, its agents, successors or assigns, shall not interfere with nor hinder the reasonable surface use by the Department of Natural Resources, its Offices or Commissions, as herein above reserved.

NOTE: This tract is located in an area designated by the Louisiana Legislature or the Wildlife and Fisheries Commission as a Public Oyster Seed Ground, Reservation, or area of Calcasieu or Sabine Lake. Proposed projects occurring in these areas will be evaluated on a case by case basis by Louisiana Department of Wildlife & Fisheries. Modifications to proposed project features including, but not limited to, access routes, well sites, flowlines, and appurtenant structures maybe required by the Louisiana Department of Wildlife and Fisheries. In addition, compensatory mitigation will be required to offset unavoidable habitat impacts.

Applicant: CYPRESS ENERGY CORPORATION

Bidder	Cash Payment	Price/Acre	Rental	Oil	Gas	Other

Legend

- 12010022
- Blocks
- Active_Leases

