

TRACT 42478 - Portion of Block 46, Ship Shoal Area, Terrebonne Parish, Louisiana

The beds and bottoms of all water bodies belonging to the State of Louisiana located in Block 46, Ship Shoal Area, together with any present lands formed by accretion to the shoreline or islands formed therein, located in Terrebonne Parish, Louisiana, owned by and not presently under mineral lease as of February 8, 2012, from the State of Louisiana, the geographical area of which is more fully described as follows: Beginning at a point on within Block 46, Ship Shoal Area, having Coordinates of X = 2,141,880.00 and Y = 135,968.17; thence North 84 degrees 52 minutes 23 seconds East 1,661.40 feet to a point having Coordinates of X = 2,143,534.75 and Y = 136,116.64; thence North 85 degrees 18 minutes 37 seconds East 4,237.19 feet to a point having Coordinates of X = 2,147,757.75 and Y = 136,463.08; thence North 77 degrees 54 minutes 20 seconds East 1,180.96 feet to a point having Coordinates of 2,148,912.50 and Y = 136,710.52; thence South 81 degrees 55 minutes 55 seconds East 7,158.35 feet to a point on the East line of said Block 46, Ship Shoal Area, having Coordinates of X = 2,156,000.00 and Y = 135,705.87; thence South 2,937.39 feet to a point on being the Northwest corner of State Lease No. 14157, as amended, having Coordinates of X = 2,156,000.00 and Y = 132,768.48; thence North 65 degrees 46 minutes 56 seconds West 2,411.47 feet along the boundary of said State Lease No. 14157 to its Northwest corner, also being a Southeast corner of State Lease No. 14311, as amended, having Coordinates of X = 2,153,800.91 and Y = 133,758.02; thence North 814.77 feet along the Eastern boundary of said State Lease No. 14311, also being the Southeast corner of State Lease No. 14310, as amended, having Coordinates of X = 2,153,800.01 and Y = 134,572.79; thence along the boundary of said State Lease No. 14310 the following courses: North 60 degrees 42 minutes 10 seconds West 3,325.34 feet, South 84 degrees 40 minutes 4 seconds West 7,532.60 feet and South 927.22 feet to a point being its Southwest corner also being the Northernmost corner of said State Lease No. 14311, as amended, having Coordinates of X = 2,143,400.00 and Y = 134,572.79; thence along the boundary of said State Lease No. 14311 the following courses: South 66 degrees 41 minutes 52 seconds East 5,770.71 feet and South 80 degrees 59 minutes 07 seconds East 2,733.76 feet to a point having Coordinates of X = 2,151,400.00 and Y = 131,861.68; thence South 4,269.69 feet to a point having Coordinates of X = 2,151,400.00 and Y = 127,591.99; thence West 9,520.00 feet to a point being the Southeast corner of State Lease No. 14793, as amended, having Coordinates 2,141,880.00 and Y = 127,591.99; thence North 400.00 feet along the Eastern boundary of said State Lease No. 14793, as amended, to its Northeast corner having Coordinates of X = 2,141,880.00 and Y = 127,991.99; thence North 7,976.18 feet to the point of beginning, containing approximately **1565.83 acres**, all as more particularly outlined on a plat on file in the Office of Mineral Resources, Department of Natural Resources. All bearings, distances and coordinates are based on Louisiana Coordinate System of 1927, (North or South Zone).

NOTE: The above description of the Tract nominated for lease has been provided and corrected, where required, exclusively by the nomination party. Any mineral lease selected from this Tract and awarded by the Louisiana State Mineral and Energy Board shall be without warranty of any kind, either express, implied, or statutory, including, but not limited to, the implied warranties of merchantability and fitness for a particular purpose. Should the mineral lease awarded by the Louisiana State Mineral and Energy Board be subsequently modified, cancelled or abrogated due to the existence of conflicting leases, operating agreements, private claims or other future obligations or conditions which may affect all or any portion of the leased Tract, it shall not relieve the Lessee of the obligation to pay any bonus due thereon to the Louisiana State Mineral and Energy Board, nor shall the Louisiana State Mineral and Energy Board be obligated to refund any consideration paid by the Lessor prior to such modification, cancellation, or abrogation, including, but not limited to, bonuses, rentals and royalties.

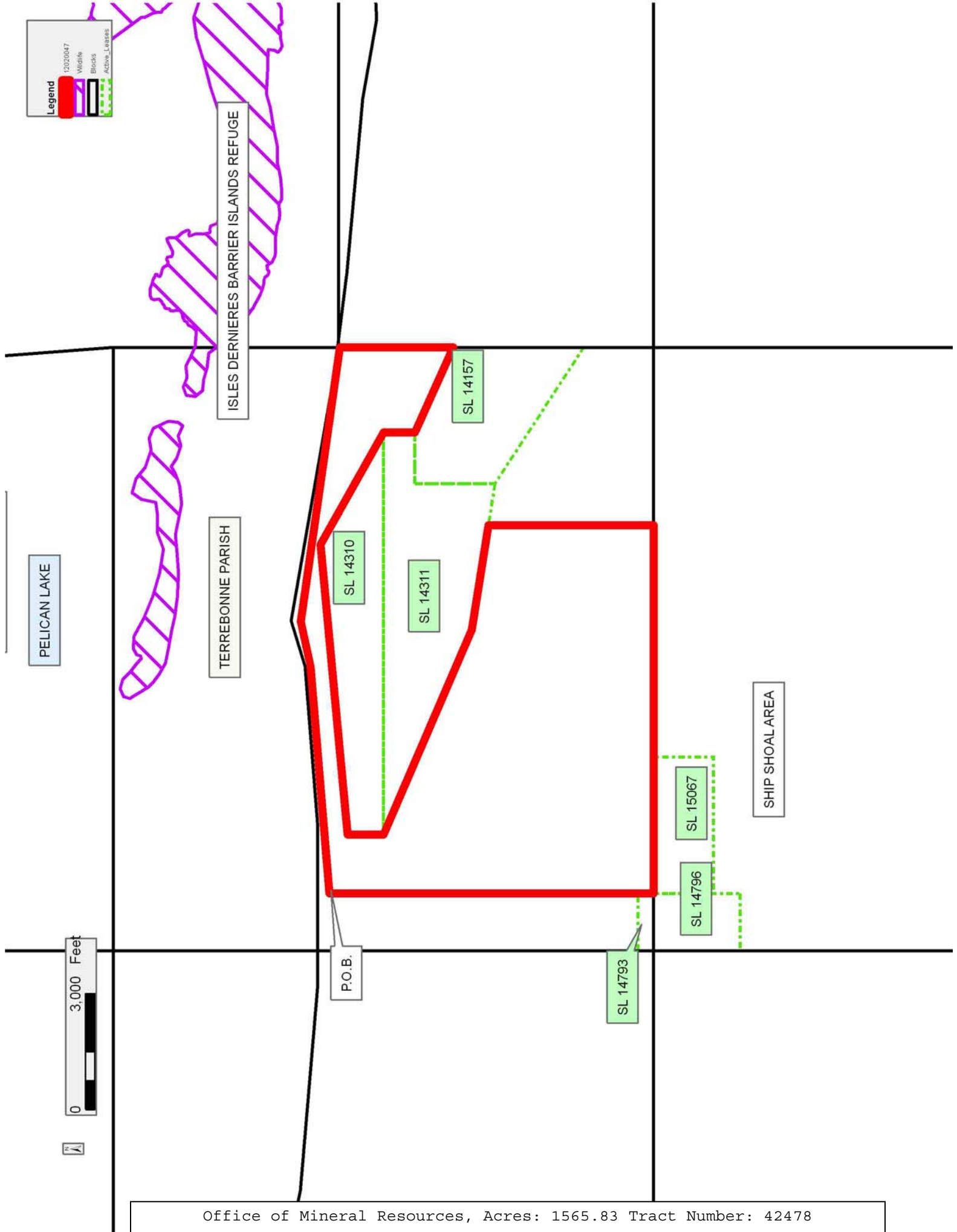
NOTE: The State of Louisiana does hereby reserve, and this lease shall be subject to, the imprescriptible right of surface use in the nature of a servitude in favor of the Department of Natural Resources, including its Offices and Commissions, for the sole purpose of implementing, constructing, servicing and maintaining approved coastal zone management and/or restoration projects. Utilization of any and all rights derived under this lease by the mineral lessee, its agents, successors or assigns, shall not interfere with nor hinder the reasonable surface use by the Department of Natural Resources, its Offices or Commissions, as herein above reserved.

Applicant: REAGAN ENERGY SERVICES, LLC

Bidder	Cash Payment	Price/ Acre	Rental	Oil	Gas	Other

Legend

- 12020047
- Wildlife
- Blocks
- Active Leases



TRACT 42479 - Portion of Block 45, Ship Shoal Area, Terrebonne Parish, Louisiana

The beds and bottoms of all water bodies belonging to the State of Louisiana located in Block 45, Ship Shoal Area, together with any present lands formed by accretion to the shoreline or islands formed therein, located in Terrebonne Parish, Louisiana, owned by and not presently under mineral lease as of February 8, 2012, from the State of Louisiana, the geographical area of which is more fully described as follows: Beginning at a point on the West line of Block 45, Ship Shoal Area, having Coordinates of X = 2,156,000.00 and Y = 135,705.87; thence South 83 degrees 35 minutes 04 seconds East 8,531.36 feet to a point having Coordinates of X = 2,164,477.94 and Y = 134,752.60; thence North 87 degrees 07 minutes 11 seconds East 3,363.25 feet to a point having Coordinates of X = 2,167,836.94 and Y = 134,921.60; thence North 84 degrees 59 minutes 53 seconds East 3,777.45 feet to a point on the East line of said Block 45, Ship Shoal Area, having Coordinates of X = 2,171,600.00 and Y = 135,250.95; thence South 7,658.96 feet along the East line of said Block 45, Ship Shoal Area, to a point having Coordinates of X = 2,171,600.00 and Y = 127,591.99; thence West 6,570.01 feet to a point having Coordinates of X = 2,165,029.99 and Y = 127,591.99; thence North 2,098.02 feet to a point having Coordinates of X = 2,165,029.99 and Y = 129,690.01; thence West 5,829.99 feet to a point on State Lease No. 14158, having Coordinates of X = 2,159,200.00 and Y = 129,690.01; thence along the boundary of said State Lease No. 14158 the following courses: North 36 degrees 34 minutes 14 seconds West 3,063.04 feet and North 65 degrees 46 minutes 56 seconds West 1,507.69 feet to a point having Coordinates of X = 2,156,000.00 and Y = 132,768.48; thence North 2,937.39 feet along the West line of said Block 45, Ship Shoal Area, to the point of beginning, containing approximately **2118.65 acres**, all as more particularly outlined on a plat on file in the Office of Mineral Resources, Department of Natural Resources. All bearings, distances and coordinates are based on Louisiana Coordinate System of 1927, (North or South Zone).

NOTE: The above description of the Tract nominated for lease has been provided and corrected, where required, exclusively by the nomination party. Any mineral lease selected from this Tract and awarded by the Louisiana State Mineral and Energy Board shall be without warranty of any kind, either express, implied, or statutory, including, but not limited to, the implied warranties of merchantability and fitness for a particular purpose. Should the mineral lease awarded by the Louisiana State Mineral and Energy Board be subsequently modified, cancelled or abrogated due to the existence of conflicting leases, operating agreements, private claims or other future obligations or conditions which may affect all or any portion of the leased Tract, it shall not relieve the Lessee of the obligation to pay any bonus due thereon to the Louisiana State Mineral and Energy Board, nor shall the Louisiana State Mineral and Energy Board be obligated to refund any consideration paid by the Lessor prior to such modification, cancellation, or abrogation, including, but not limited to, bonuses, rentals and royalties.

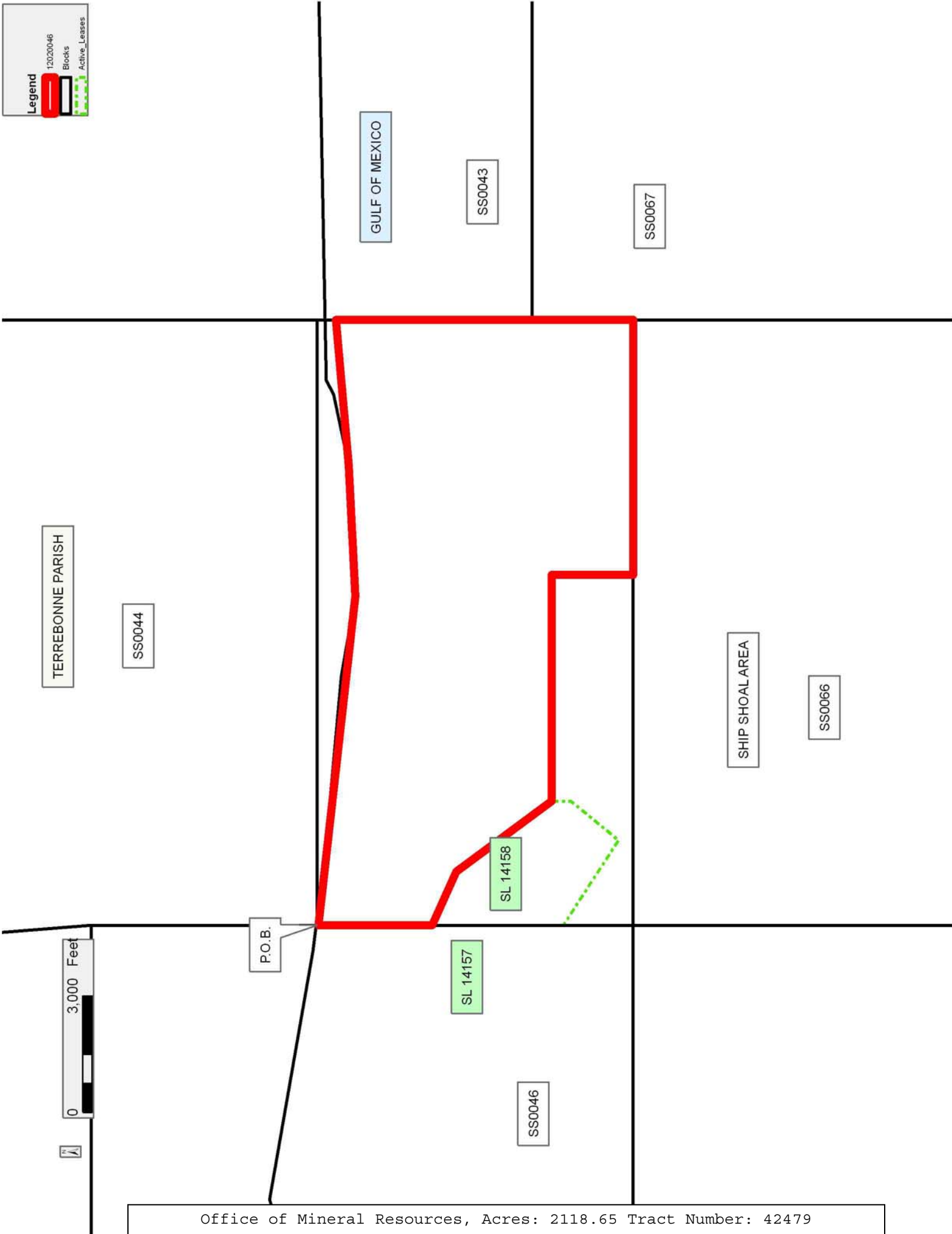
NOTE: The State of Louisiana does hereby reserve, and this lease shall be subject to, the imprescriptible right of surface use in the nature of a servitude in favor of the Department of Natural Resources, including its Offices and Commissions, for the sole purpose of implementing, constructing, servicing and maintaining approved coastal zone management and/or restoration projects. Utilization of any and all rights derived under this lease by the mineral lessee, its agents, successors or assigns, shall not interfere with nor hinder the reasonable surface use by the Department of Natural Resources, its Offices or Commissions, as herein above reserved.

Applicant: REAGAN ENERGY SERVICES, LLC

Bidder	Cash Payment	Price/ Acre	Rental	Oil	Gas	Other

Legend

12020046
Blocks
Active_Leases



TRACT 42480 - Portion of Blocks 45, 46, 65, and 66, Ship Shoal Area, Terrebonne Parish, Louisiana

The beds and bottoms of all water bodies belonging to the State of Louisiana located in Blocks 45, 46, 65, and 66, Ship Shoal Area, together with any present lands formed by accretion to the shoreline or islands formed therein, located in Terrebonne Parish, Louisiana, owned by and not presently under mineral lease as of February 8, 2012, from the State of Louisiana, the geographical area of which is more fully described as follows: Beginning at a point within Block 45, Ship Shoal Area, having Coordinates of X = 2,165,029.99 and Y = 129,690.01; thence South 2,098.02 feet to a point on the South boundary of Block 45, having Coordinates of X = 2,165,029.99 and Y = 127,591.99; thence South 4,700.00 feet to a point on the Northeast corner of State Lease No. 19749 having Coordinates of X = 2,165,030.00 and Y = 122,891.99; thence West 1,486.66 feet along the North line of said State Lease No. 19749 to a point on its Northwest corner also being the Northeast corner of State Lease No. 10830, as amended, having Coordinates of X = 2,163,543.34 and Y = 122,891.99; thence West 1,462.09 feet along the North boundary of said State Lease No. 10830, as amended, to its Northwest corner also being the Northeast corner of State Lease No. 17595 having Coordinates of X = 2,162,081.25 and Y = 122,891.99; thence along the boundary of said State Lease No. 17595 the following courses: West 1,500.00 feet, South 2,000.00 feet and East 1,500.00 feet to a point being its Southeast corner also being the Southwest corner of said State Lease No. 10830, as amended, and the Northwest corner of State Lease No. 19749 having Coordinates of X = 2,162,081.25 and Y = 120,891.95; thence South 2,191.99 feet along the Western boundary of said State Lease No. 19749 to a Southwestern corner having Coordinates of X = 2,162,081.25 and Y = 118,700.00; thence South 512.39 feet to a point having Coordinates of X = 2,162,081.25 and Y = 118,187.61; thence West 3,325.65 feet to a point being the Southeast corner of State Lease No. 14572, as amended, having Coordinates of X = 2,158,755.60 and Y = 118,187.61; thence North 26 degrees 10 minutes 58 seconds West 6,245.19 feet along the Eastern boundary of said State Lease No. 14572, as amended, to its Northernmost corner, also being the Northeast corner of State Lease No. 14571, as amended, having Coordinates of X = 2,156,000.00 and Y = 123,791.99; thence West 4,600.00 feet along the Northern boundary of said State Lease No. 14571, as amended, to its Northwest corner having Coordinates of X = 2,151,400.00 and Y = 123,791.99; thence North 3,800.00 feet to a point on the Northern line of Block 65, Ship Shoal Area and also the Southern line of Block 46, Ship Shoal Area, having Coordinates of X = 2,151,400.00 and Y = 127,591.99; thence North 4,269.69 to a point on the South line of State Lease No. 14311, as amended, having Coordinates of X = 2,151,400.00 and Y = 131,861.68; thence South 80 degrees 59 minutes 07 seconds East 1,095.54 feet along the Southern boundary of said State Lease No. 14311, as amended, to its Southeast corner, also being the Southwest corner of State Lease No. 14157, as amended, having Coordinates of X = 2,152,482.01 and Y = 131,690.03; thence South 56 degrees 54 minutes 25 seconds East 4,199.16 feet along the Southern boundary of said State Lease No. 14157, as amended, to its Southeast corner, also being the Southwest corner of State

Lease No. 14158, as amended, having Coordinates of X = 2,156,000.00 and Y = 129,397.28; thence along the boundary of said State Lease No. 14158, as amended, the following: South 56 degrees 54 minutes 25 seconds East 2,614.04 feet, North 39 degrees 23 minutes 27 seconds East 1,591.54 feet and North 490.00 feet to a point having Coordinates of X = 2,159,200.01 and Y = 129,690.01; thence East 5,829.99 feet to the point of beginning, containing approximately **2,487.23 acres**, all as more particularly outlined on a plat on file in the Office of Mineral Resources, Department of Natural Resources. All bearings, distances and coordinates are based on Louisiana Coordinate System of 1927, (North or South Zone).

NOTE: The above description of the Tract nominated for lease has been provided and corrected, where required, exclusively by the nomination party. Any mineral lease selected from this Tract and awarded by the Louisiana State Mineral and Energy Board shall be without warranty of any kind, either express, implied, or statutory, including, but not limited to, the implied warranties of merchantability and fitness for a particular purpose. Should the mineral lease awarded by the Louisiana State Mineral and Energy Board be subsequently modified, cancelled or abrogated due to the existence of conflicting leases, operating agreements, private claims or other future obligations or conditions which may affect all or any portion of the leased Tract, it shall not relieve the Lessee of the obligation to pay any bonus due thereon to the Louisiana State Mineral and Energy Board, nor shall the Louisiana State Mineral and Energy Board be obligated to refund any consideration paid by the Lessor prior to such modification, cancellation, or abrogation, including, but not limited to, bonuses, rentals and royalties.

NOTE: The State of Louisiana does hereby reserve, and this lease shall be subject to, the imprescriptible right of surface use in the nature of a servitude in favor of the Department of Natural Resources, including its Offices and Commissions, for the sole purpose of implementing, constructing, servicing and maintaining approved coastal zone management and/or restoration projects. Utilization of any and all rights derived under this lease by the mineral lessee, its agents, successors or assigns, shall not interfere with nor hinder the reasonable surface use by the Department of Natural Resources, its Offices or Commissions, as herein above reserved.

Applicant: REAGAN ENERGY SERVICES, LLC

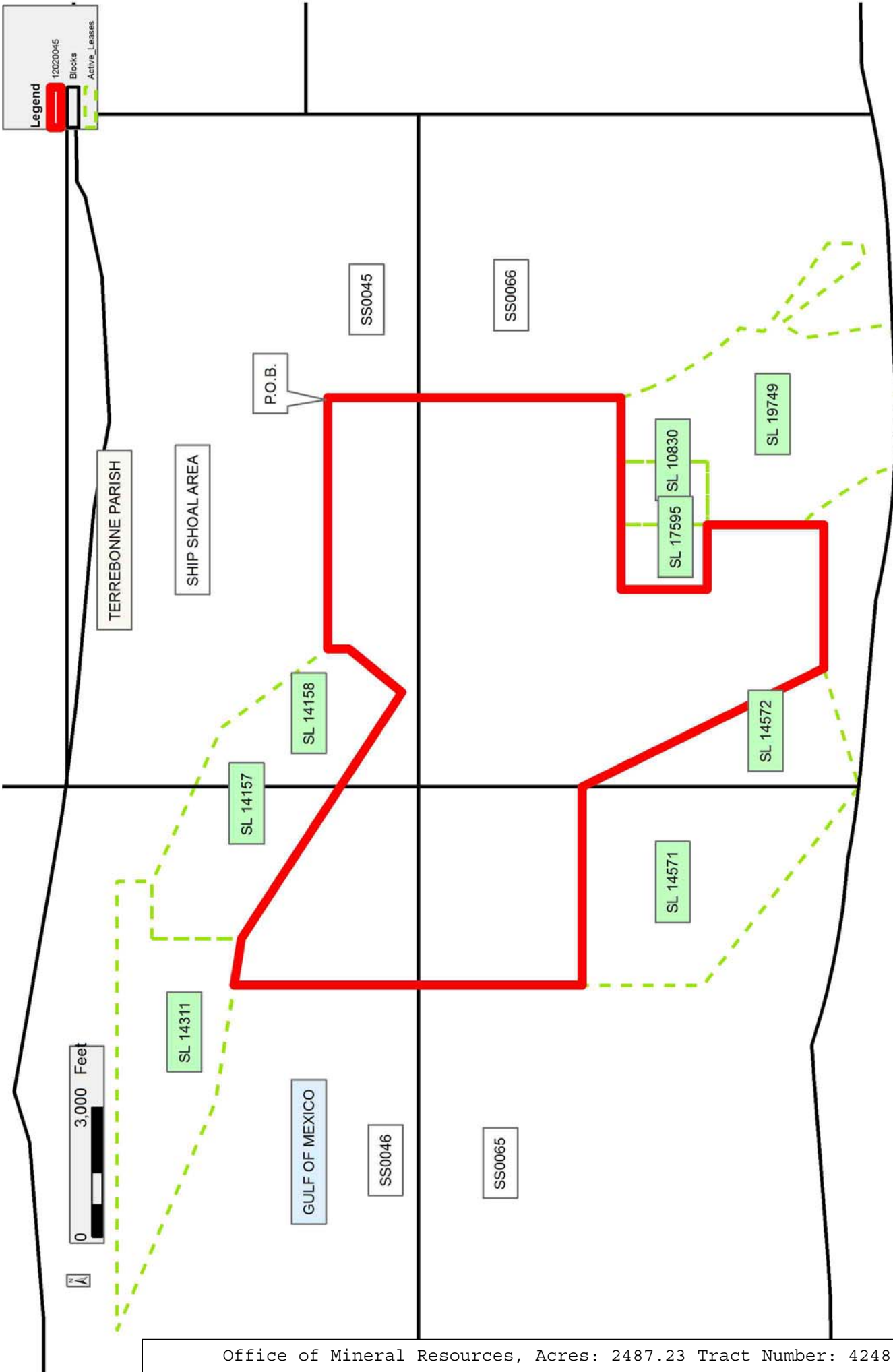
Bidder	Cash Payment	Price/ Acre	Rental	Oil	Gas	Other

Legend

12020045

Blocks

Active Leases



TRACT 42481 - Portion of Block 65, Ship Shoal Area, Terrebonne Parish, Louisiana

The beds and bottoms of all water bodies belonging to the State of Louisiana located in Block 65, Ship Shoal Area, together with any present lands formed by accretion to the shoreline or islands formed therein, located in Terrebonne Parish, Louisiana, owned by and not presently under mineral lease as of February 8, 2012, from the State of Louisiana, the geographical area of which is more fully described as follows: Beginning at a point on the Northeast corner of State Lease No. 15067 also being the North line of said Block 65, Ship Shoal Area, having Coordinates of X = 2,145,405.00 and Y = 127,591.99; thence East 5995.00 feet along the North line of said Block 65 to its Northeast corner having Coordinates of X = 2,151,400.00 and Y = 127,591.99; thence South 3,800.00 feet along the East line of said Block 65 to a point on the Northwest corner of State Lease No. 14571, as amended, having Coordinates of X = 2,151,400.00 and Y = 123,791.99; thence along the boundary of said State Lease No. 14571, as amended, the following courses: South 2,805.78 feet and South 51 degrees 55 minutes 06 seconds East 4,074.70 feet to a point on the Southernmost line of said State Lease No. 14571, as amended, having Coordinates of X = 2,154,607.33 and Y = 118,473.00; thence West 4,814.33 feet to a point on the Three Mile Line, as decreed by the Supreme Court of the United States, as determined by a Special Master appointed therein, in litigation styled *United States v. State of Louisiana et al No. 9 Original*, in 1975, having Coordinates of X = 2,149,793 and Y = 118,473; thence West 9,393.00 feet to a point being on the West line of said Block 65 having Coordinates of X = 2,140,400.00 and Y = 118,473.00; thence North 6,878.99 feet along the West line of said Block 65 to a point on the Southwest corner of State Lease No. 14796, as amended, having Coordinates of X = 2,140,400.00 and Y = 125,351.99; the along the boundary of said State Lease No. 14796, as amended, the following courses: East 1,480.00 feet and North 690.00 feet to a point on its East line also being the Southwest corner of said State Lease No. 15067 having Coordinates of X = 2,141,880.00 and Y = 126,041.99; thence along the boundary of said State Lease No. 15067 the following courses: East 3,525.00 feet and North 1,550.00 feet to the point of beginning, containing approximately **2,193.76 acres, LESS AND EXCEPT** that portion thereof, if any, lying seaward of the line three nautical miles from the coast line of Louisiana, as said three mile line has been decreed by the Supreme Court of the United States, as determined by a Special Master appointed therein, in litigation styled **United States v. State of Louisiana et al No. 9 Original**, in 1975, all as more particularly outlined on a plat in the Office of Mineral Resources, Department of Natural Resources. All bearings, distances and coordinates are based on the Louisiana Coordinate System of 1927, (South Zone).

NOTE: The above description of the Tract nominated for lease has been provided and corrected, where required, exclusively by the nomination party. Any mineral lease selected from this Tract and awarded by the Louisiana State Mineral and Energy Board shall be without warranty of any kind, either express, implied, or statutory, including, but not limited

to, the implied warranties of merchantability and fitness for a particular purpose. Should the mineral lease awarded by the Louisiana State Mineral and Energy Board be subsequently modified, cancelled or abrogated due to the existence of conflicting leases, operating agreements, private claims or other future obligations or conditions which may affect all or any portion of the leased Tract, it shall not relieve the Lessee of the obligation to pay any bonus due thereon to the Louisiana State Mineral and Energy Board, nor shall the Louisiana State Mineral and Energy Board be obligated to refund any consideration paid by the Lessor prior to such modification, cancellation, or abrogation, including, but not limited to, bonuses, rentals and royalties.

NOTE: The State of Louisiana does hereby reserve, and this lease shall be subject to, the imprescriptible right of surface use in the nature of a servitude in favor of the Department of Natural Resources, including its Offices and Commissions, for the sole purpose of implementing, constructing, servicing and maintaining approved coastal zone management and/or restoration projects. Utilization of any and all rights derived under this lease by the mineral lessee, its agents, successors or assigns, shall not interfere with nor hinder the reasonable surface use by the Department of Natural Resources, its Offices or Commissions, as herein above reserved.

Applicant: REAGAN ENERGY SERVICES, LLC

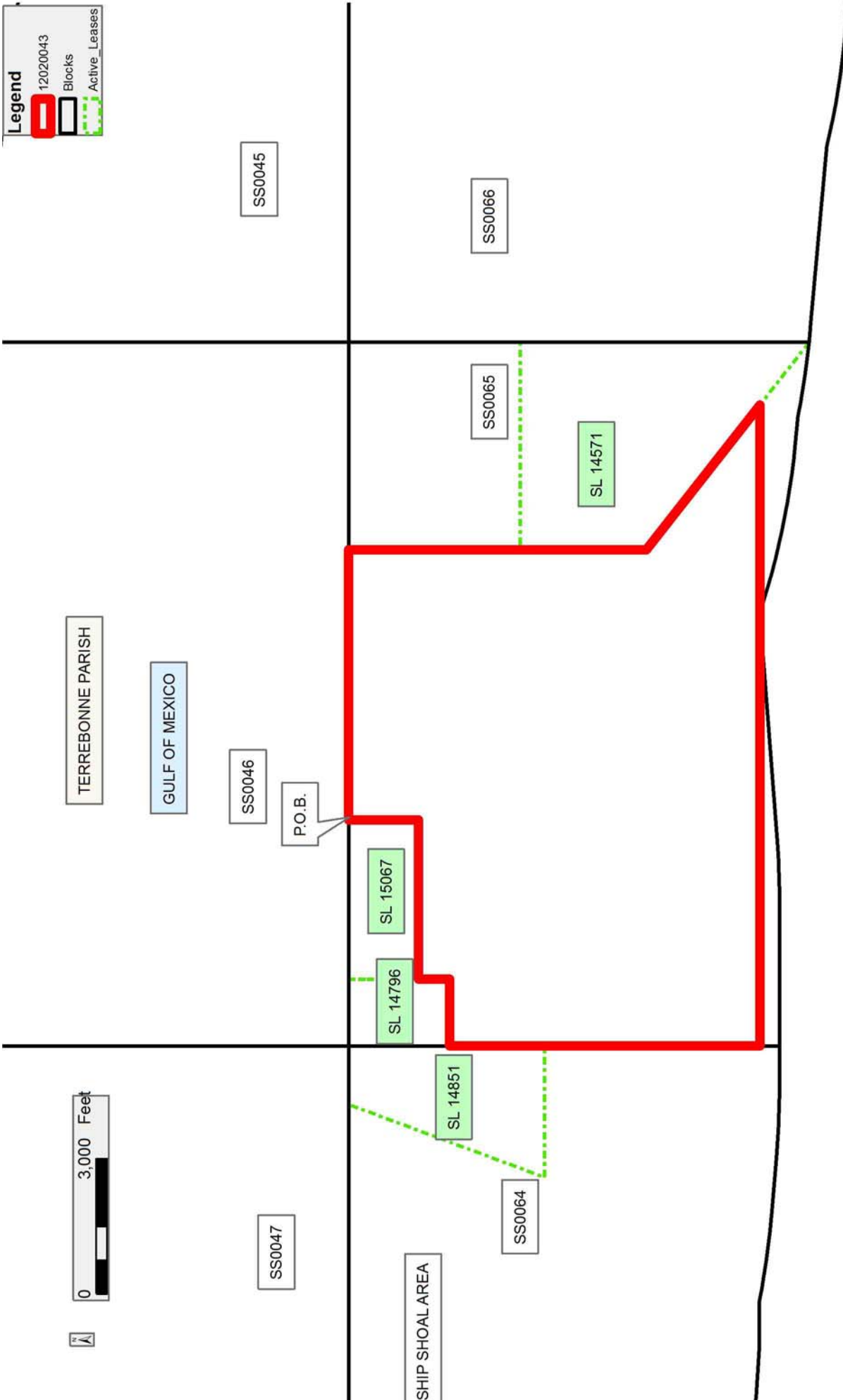
Bidder	Cash Payment	Price/ Acre	Rental	Oil	Gas	Other

Legend

12020043

Blocks

Active Leases



TRACT 42482 - Portion of Block 66, Ship Shoal Area, Terrebonne Parish, Louisiana

The beds and bottoms of all water bodies belonging to the State of Louisiana located in Block 66, Ship Shoal Area, together with any present lands formed by accretion to the shoreline or islands formed therein, located in Terrebonne Parish, Louisiana, owned by and not presently under mineral lease as of February 8, 2012, from the State of Louisiana, the geographical area of which is more fully described as follows: Beginning at the Northeast corner of Block 66, Ship Shoal Area, having Coordinates of X = 2,171,600.00 and Y = 127,591.99; thence South 10,448.59 feet along the East line of said Block 66, Ship Shoal Area, to a point on said East line of said Block 66, Ship Shoal Area, having Coordinates of X = 2,171,600.00 and Y = 117,143.40; thence West 2,351.32 feet to a point on the Southeast line of State Lease No. A0312 having Coordinates of X = 2,169,248.68 and Y = 117,143.40; thence along the boundary of said State Lease No. A0312 the following courses: North 27 degrees 33 minutes 20 seconds East 78.50 feet, North 24 degrees 04 minutes 11 seconds East 486.99 feet, North 39 degrees 03 minutes 21 seconds West 280.77 feet, North 45 degrees 00 minutes 27 seconds West 215.47 feet, North 53 degrees 39 minutes 49 seconds West 231.52 feet, North 53 degrees 15 minutes 11 seconds West 196.50 feet, North 51 degrees 24 minutes 19 seconds West 101.73 feet, North 47 degrees 47 minutes 24 seconds West 146.15 feet, North 46 degrees 30 minutes 04 seconds West 62.89 feet, North 43 degrees 46 minutes 59 seconds West 136.17 feet, North 42 degrees 33 minutes 57 seconds West 133.69 feet, North 40 degrees 49 minutes 22 seconds West 129.11 feet, North 42 degrees 36 minutes 06 seconds West 161.89 feet, North 51 degrees 40 minutes 03 seconds West 150.67 feet, North 60 degrees 39 minutes 19 seconds West 139.06 feet, North 65 degrees 21 minutes 04 seconds West 197.94 feet, North 64 degrees 44 minutes 51 seconds West 180.59 feet, South 48 degrees 10 minutes 57 seconds West 144.82 feet, South 53 degrees 35 minutes 43 seconds West 126.66 feet and South 57 degrees 45 minutes 42 seconds West 108.01 feet to a point that intersects with said State Lease No. A0312 and State Lease No. 19749 having Coordinates of X = 2,167,314.47 and Y = 118,993.17; thence along the boundary of said State Lease No. 19749 the following courses: North 51 degrees 45 minutes 13 seconds West 947.96 feet, North 07 degrees 07 minutes 30 seconds East 564.36 feet, North 43 degrees 15 minutes 52 seconds West 466.90 feet, North 39 degrees 38 minutes 39 seconds West 454.53 feet, North 31 degrees 53 minutes 27 seconds West 1,060.00 feet, North 23 degrees 40 minutes 56 seconds West 622.41 feet and North 17 degrees 47 minutes 39 seconds West 621.74 feet to a point having Coordinates of X = 2,165,030.00 and Y = 122,891.99; thence North 4,700.00 feet to a point on the North line of said Block 66, Ship Shoal Area, having Coordinates of X = 2,165,029.99 and Y = 127,591.99; thence East 6,570.01 feet to the point of beginning, containing approximately **1,320.60 acres, LESS AND EXCEPT** that portion thereof, if any, lying seaward of the line three nautical miles from the coast line of Louisiana, as said three mile line has been decreed by the Supreme Court of the United States, as determined by a Special Master appointed therein, in litigation styled

United States v. State of Louisiana et al No. 9 Original, in 1975, all as more particularly outlined on a plat in the Office of Mineral Resources, Department of Natural Resources. All bearings, distances and coordinates are based on the Louisiana Coordinate System of 1927, (South Zone).

NOTE: The above description of the Tract nominated for lease has been provided and corrected, where required, exclusively by the nomination party. Any mineral lease selected from this Tract and awarded by the Louisiana State Mineral and Energy Board shall be without warranty of any kind, either express, implied, or statutory, including, but not limited to, the implied warranties of merchantability and fitness for a particular purpose. Should the mineral lease awarded by the Louisiana State Mineral and Energy Board be subsequently modified, cancelled or abrogated due to the existence of conflicting leases, operating agreements, private claims or other future obligations or conditions which may affect all or any portion of the leased Tract, it shall not relieve the Lessee of the obligation to pay any bonus due thereon to the Louisiana State Mineral and Energy Board, nor shall the Louisiana State Mineral and Energy Board be obligated to refund any consideration paid by the Lessor prior to such modification, cancellation, or abrogation, including, but not limited to, bonuses, rentals and royalties.

NOTE: The State of Louisiana does hereby reserve, and this lease shall be subject to, the imprescriptible right of surface use in the nature of a servitude in favor of the Department of Natural Resources, including its Offices and Commissions, for the sole purpose of implementing, constructing, servicing and maintaining approved coastal zone management and/or restoration projects. Utilization of any and all rights derived under this lease by the mineral lessee, its agents, successors or assigns, shall not interfere with nor hinder the reasonable surface use by the Department of Natural Resources, its Offices or Commissions, as herein above reserved.

Applicant: REAGAN ENERGY SERVICES, LLC

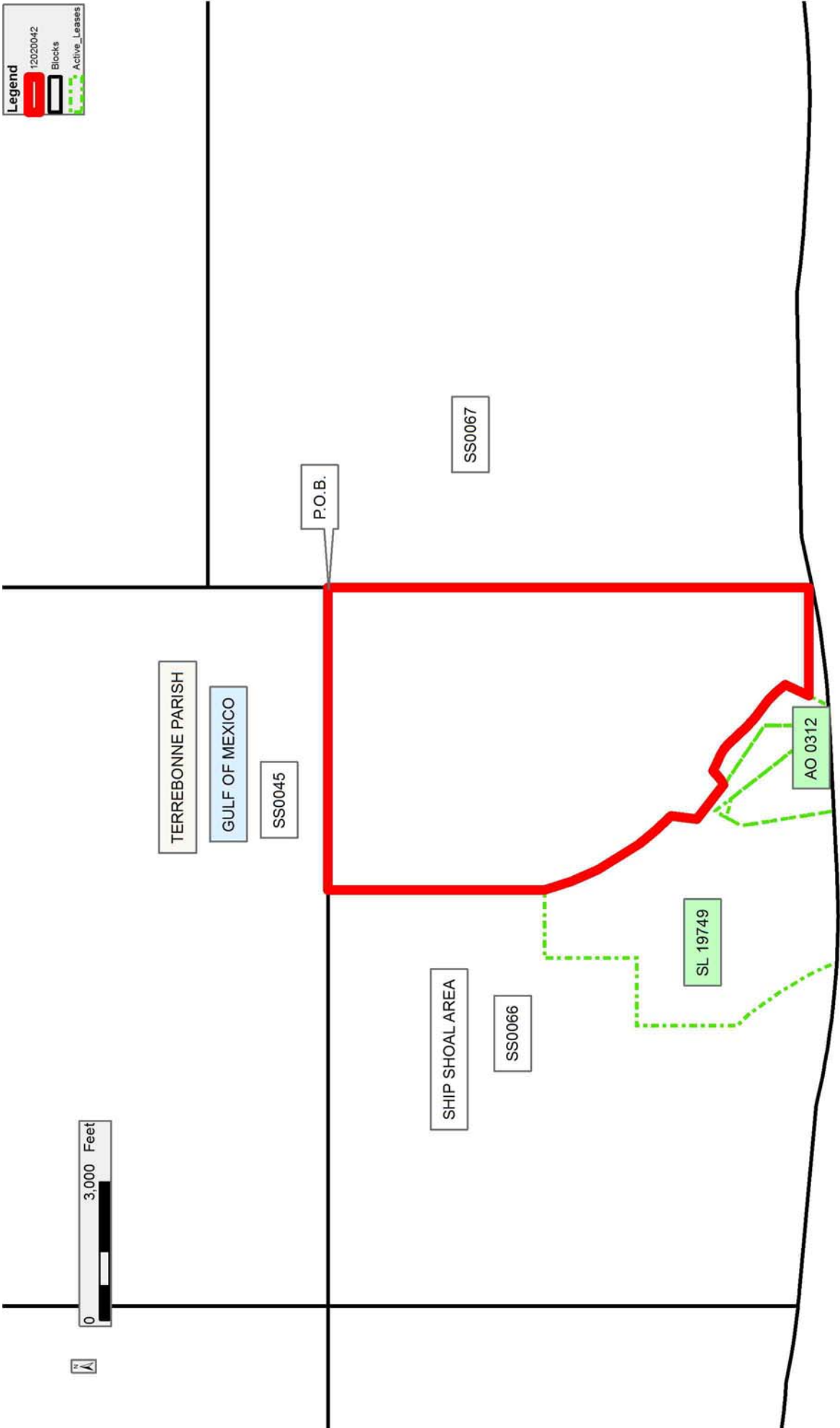
Bidder	Cash Payment	Price/ Acre	Rental	Oil	Gas	Other

Legend

12020042

Blocks

Active Leases



TRACT 42483 - Portion of Block 64, Ship Shoal Area, Terrebonne Parish, Louisiana

The beds and bottoms of all water bodies belonging to the State of Louisiana located in Block 64, Ship Shoal Area, together with any present lands formed by accretion to the shoreline or islands formed therein, located in Terrebonne Parish, Louisiana, owned by and not presently under mineral lease as of February 8, 2012, from the State of Louisiana, the geographical area of which is more fully described as follows: Beginning at a point on the Northwest corner of Block 64, Ship Shoal Area, having Coordinates of X = 2,124,800.00 and Y = 127,591.99; thence East 14,300.00 feet to a point on the Northwest corner of State Lease No. 14851, as amended, having Coordinates of X = 2,139,100.00 and Y = 127,591.99; thence South 20 degrees 23 minutes 08 seconds West 2,545.75 feet along the West line of said State Lease No. 14851, as amended, to a point being the Northeast corner of State Lease No. 14795, as amended, having Coordinates of X = 2,138,213.23 and Y = 125,205.68; thence along the boundary of said State Lease No. 14795, as amended, the following courses: West 3,838.29 feet, South 27 degrees 10 minutes 29 seconds West 3,886.40 feet, South 1,976.80 feet, East 3,593.92 feet and North 20 degrees 23 minutes 05 seconds East 2,326.20 feet to a point on its East line having Coordinates of X = 2,137,004.18 and Y = 121,951.99; thence East 3,395.82 feet to a point on the Eastern line of said Block 64 having Coordinates of X = 2,140,400.00 and Y = 121,951.99; thence South 3,916.99 feet along the Eastern line of said Block 64 to a point on the Three Mile Line, as decreed by the Supreme Court of the United States, as determined by a Special Master appointed therein, in litigation styled *United States v. State of Louisiana et al No. 9 Original*, in 1975, having Coordinates of X = 2,140,400.00 and Y = 118,035.00; thence North 78 degrees 53 minutes 33 seconds West 15,897.81 feet to a point on the Western line of said Block 64, having Coordinates of X = 2,124,800.00 and Y = 121,097.72; thence North 6,494.27 feet along the West line of said Block 64 to the point of beginning, containing approximately **2066.32 acres, LESS AND EXCEPT** that portion thereof, if any, lying seaward of the line three nautical miles from the coast line of Louisiana, as said three mile line has been decreed by the Supreme Court of the United States, as determined by a Special Master appointed therein, in litigation styled **United States v. State of Louisiana et al No. 9 Original**, in 1975, all as more particularly outlined on a plat in the Office of Mineral Resources, Department of Natural Resources. All bearings, distances and coordinates are based on the Louisiana Coordinate System of 1927, (South Zone).

NOTE: The above description of the Tract nominated for lease has been provided and corrected, where required, exclusively by the nomination party. Any mineral lease selected from this Tract and awarded by the Louisiana State Mineral and Energy Board shall be without warranty of any kind, either express, implied, or statutory, including, but not limited to, the implied warranties of merchantability and fitness for a particular purpose. Should the mineral lease awarded by the Louisiana State Mineral and Energy Board be subsequently modified, cancelled or abrogated due to

the existence of conflicting leases, operating agreements, private claims or other future obligations or conditions which may affect all or any portion of the leased Tract, it shall not relieve the Lessee of the obligation to pay any bonus due thereon to the Louisiana State Mineral and Energy Board, nor shall the Louisiana State Mineral and Energy Board be obligated to refund any consideration paid by the Lessor prior to such modification, cancellation, or abrogation, including, but not limited to, bonuses, rentals and royalties.

NOTE: The State of Louisiana does hereby reserve, and this lease shall be subject to, the imprescriptible right of surface use in the nature of a servitude in favor of the Department of Natural Resources, including its Offices and Commissions, for the sole purpose of implementing, constructing, servicing and maintaining approved coastal zone management and/or restoration projects. Utilization of any and all rights derived under this lease by the mineral lessee, its agents, successors or assigns, shall not interfere with nor hinder the reasonable surface use by the Department of Natural Resources, its Offices or Commissions, as herein above reserved.

Applicant: REAGAN ENERGY SERVICES, LLC

Bidder	Cash Payment	Price/ Acre	Rental	Oil	Gas	Other

Legend

12020044
Blocks
Active Leases

