

TRACT 42484 - East Carroll Parish, Louisiana

All of the lands now or formerly constituting the beds and bottoms of all water bodies of every nature and description as to which title is vested in the State of Louisiana, together with all islands arising therein and other lands formed by accretion or by reliction, where allowed by law, excepting tax adjudicated lands, and not presently under mineral lease on February 8, 2012, situated in East Carroll Parish, Louisiana, and more particularly described as follows: Beginning at a point having Coordinates of X = 2,434,200.00 and Y = 745,970.00; thence East 11,395.77 feet to a point having Coordinates of X = 2,445,595.77 and Y = 745,970.00; thence South 1,561.00 feet to a point having Coordinates of X = 2,445,595.77 and Y = 744,409.00; thence West 11,395.77 feet to a point having Coordinates of X = 2,434,200.00 and Y = 744,409.00; thence North 1,561.00 feet to the point of beginning, **LESS AND EXCEPT** that portion, if any, of the above described tract that may lie within the State of Mississippi, containing approximately **81 acres**, all as more particularly outlined on a plat on file in the Office of Mineral Resources, Department of Natural Resources. All bearings, distances and coordinates are based on Louisiana Coordinate System of 1927, (North or South Zone), where applicable.

NOTE: The above description of the Tract nominated for lease has been provided and corrected, where required, exclusively by the nomination party. Any mineral lease selected from this Tract and awarded by the Louisiana State Mineral and Energy Board shall be without warranty of any kind, either express, implied, or statutory, including, but not limited to, the implied warranties of merchantability and fitness for a particular purpose. Should the mineral lease awarded by the Louisiana State Mineral and Energy Board be subsequently modified, cancelled or abrogated due to the existence of conflicting leases, operating agreements, private claims or other future obligations or conditions which may affect all or any portion of the leased Tract, it shall not relieve the Lessee of the obligation to pay any bonus due thereon to the Louisiana State Mineral and Energy Board, nor shall the Louisiana State Mineral and Energy Board be obligated to refund any consideration paid by the Lessor prior to such modification, cancellation, or abrogation, including, but not limited to, bonuses, rentals and royalties.

Applicant: THEOPHILUS OIL, GAS & LAND SERVICES, LLC

Bidder	Cash Payment	Price/Acre	Rental	Oil	Gas	Other

Legend

12020062

IMAGERY.DOQQ_2004_1M

EAST CARROLL PARISH

MISSISSIPPI RIVER

T10N - R8W

P.O.B.

0 2,000 Feet

TRACT 42485 - East Carroll Parish, Louisiana

All of the lands now or formerly constituting the beds and bottoms of all water bodies of every nature and description as to which title is vested in the State of Louisiana, together with all islands arising therein and other lands formed by accretion or by reliction, where allowed by law, excepting tax adjudicated lands, and not presently under mineral lease on February 8, 2012, situated in East Carroll Parish, Louisiana, and more particularly described as follows: Beginning at a point having Coordinates of X = 2,405,100.00 and Y = 736,755.00; thence East 10,500.00 feet to a point having Coordinates of X = 2,415,600.00 and Y = 736,755.00; thence South 3,400.00 feet to a point having Coordinates of X = 2,415,600.00 and Y = 733,355.00; thence West 10,500.00 feet to a point having Coordinates of X = 2,405,100.00 and Y = 733,355.00; thence North 3,400.00 feet to the point of beginning, containing approximately **9 acres**, all as more particularly outlined on a plat on file in the Office of Mineral Resources, Department of Natural Resources. All bearings, distances and coordinates are based on Louisiana Coordinate System of 1927, (North or South Zone), where applicable.

NOTE: The above description of the Tract nominated for lease has been provided and corrected, where required, exclusively by the nomination party. Any mineral lease selected from this Tract and awarded by the Louisiana State Mineral and Energy Board shall be without warranty of any kind, either express, implied, or statutory, including, but not limited to, the implied warranties of merchantability and fitness for a particular purpose. Should the mineral lease awarded by the Louisiana State Mineral and Energy Board be subsequently modified, cancelled or abrogated due to the existence of conflicting leases, operating agreements, private claims or other future obligations or conditions which may affect all or any portion of the leased Tract, it shall not relieve the Lessee of the obligation to pay any bonus due thereon to the Louisiana State Mineral and Energy Board, nor shall the Louisiana State Mineral and Energy Board be obligated to refund any consideration paid by the Lessor prior to such modification, cancellation, or abrogation, including, but not limited to, bonuses, rentals and royalties.

Applicant: THEOPHILUS OIL, GAS & LAND SERVICES, LLC

Bidder	Cash Payment	Price/Acre	Rental	Oil	Gas	Other

Legend

12020061



IMAGERY.DOQQ_2004_1M

EAST CARROLL PARISH

T20N - R13E

MISSISSIPPI RIVER

0 2,000 Feet

P.O.B.

J - R12E

TRACT 42486 - De Soto and Natchitoches Parishes, Louisiana

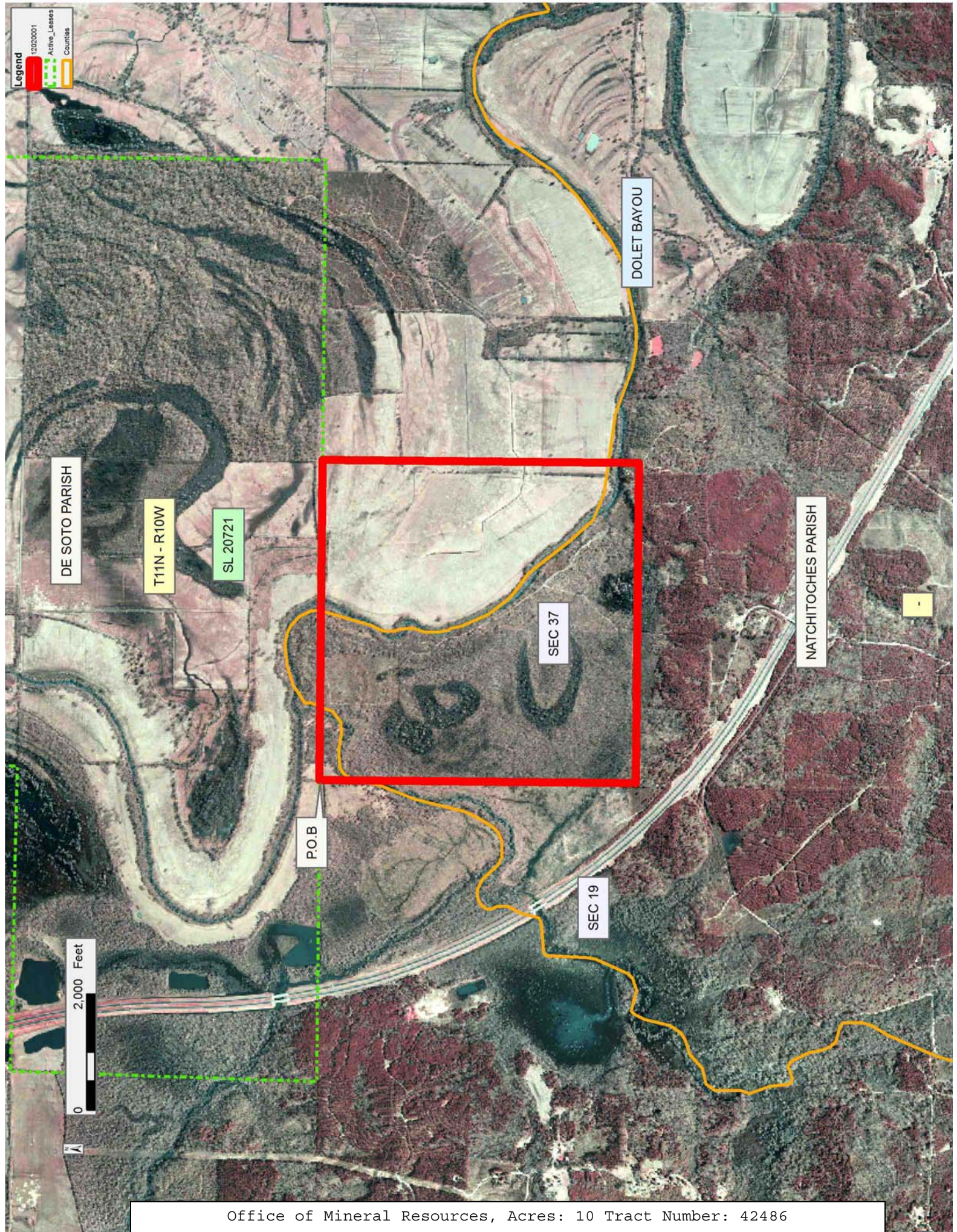
All of the lands now or formerly constituting the beds and bottoms of all water bodies of every nature and description as to which title is vested in the State of Louisiana, together with all islands arising therein and other lands formed by accretion or by reliction, where allowed by law, excepting tax adjudicated lands, and not presently under mineral lease on February 8, 2012, situated in De Soto and Natchitoches Parishes, Louisiana, and more particularly described as follows: Beginning at a point on the South line of State Lease No. 20721 having Coordinates of X = 1,713,384.80 and Y = 461,670.00; thence East 5,513.09 feet along South line of said State Lease No. 20721 to a point having Coordinates of X = 1,718,897.90 and Y = 461,670.00; thence South 5,447.29 feet to a point having Coordinates of X = 1,718,897.90 and Y = 456,222.71; thence West 5,513.09 feet to a point having Coordinates of X = 1,713,384.80 and Y = 456,222.71; thence North 5,447.29 feet to the point of beginning, containing **10 acres**, all as more particularly outlined on a plat on file in the Office of Mineral Resources, Department of Natural Resources. All bearings, distances and coordinates are based on Louisiana Coordinate System of 1927, (North or South Zone), where applicable.

NOTE: The above description of the Tract nominated for lease has been provided and corrected, where required, exclusively by the nomination party. Any mineral lease selected from this Tract and awarded by the Louisiana State Mineral and Energy Board shall be without warranty of any kind, either express, implied, or statutory, including, but not limited to, the implied warranties of merchantability and fitness for a particular purpose. Should the mineral lease awarded by the Louisiana State Mineral and Energy Board be subsequently modified, cancelled or abrogated due to the existence of conflicting leases, operating agreements, private claims or other future obligations or conditions which may affect all or any portion of the leased Tract, it shall not relieve the Lessee of the obligation to pay any bonus due thereon to the Louisiana State Mineral and Energy Board, nor shall the Louisiana State Mineral and Energy Board be obligated to refund any consideration paid by the Lessor prior to such modification, cancellation, or abrogation, including, but not limited to, bonuses, rentals and royalties.

Bidder	Cash Payment	Price/Acre	Rental	Oil	Gas	Other

Applicant: MUSTANG EXPLORATION, LLC

Legend
12020001
Active_Leases
Counties



TRACT 42487 - Lasalle Parish, Louisiana

All of the lands now or formerly constituting the beds and bottoms of all water bodies of every nature and description as to which title is vested in the State of Louisiana, together with all islands arising therein and other lands formed by accretion or by reliction, where allowed by law, excepting tax adjudicated lands, and not presently under mineral lease on February 8, 2012, situated in Lasalle Parish, Louisiana, and more particularly described as follows: Beginning at a point having Coordinates of X = 2,128,870.25 and Y = 318,120.00; thence South 5,000.00 feet to a point having Coordinates of X = 2,128,870.25 and Y = 313,120.00; thence West 1,980.00 feet to a point on the Northern boundary of State Lease No. 20448 having Coordinates of X = 2,126,890.25 and Y = 313,120.00; thence Northwesterly on a straight line approximately 88 feet along the North boundary of said State Lease No. 20448 to the Southeast corner of the most Northeastern retained portion of State Lease No. 1461, as amended; thence Northerly along the East boundary of said State Lease No. 1461 to its Northeast corner; thence Northerly on a straight line approximately 14,313 feet to a point having Coordinates of X = 2,126,811.24 and Y = 328,682.58; thence South 88 degrees 58 minutes 23 seconds East 10,687.31 feet to a point having Coordinates of X = 2,137,496.83 and Y = 328,491.04; thence South 1998.88 feet to the Northwest corner of State Lease No. 20447 having Coordinates of X = 2,137,496.83 and Y = 326,492.16; thence continue South 5,267.73 feet along the West boundary of said State Lease No. 20447 to its Southwest corner having Coordinates of X = 2,137,496.83 and Y = 321,224.43; thence South 76 degrees 29 minutes 57 seconds West 1,989.33 feet to a point having Coordinates of X = 2,135,562.47 and Y = 320,760.00; thence West 3,192.22 feet to a point having Coordinates of X = 2,132,370.25 and Y = 320,760.00; thence South 2,640.00 feet to a point having Coordinates of X = 2,132,370.25 and Y = 318,120.00; thence West 3,500.00 feet to the point of beginning, **LESS AND EXCEPT** any portion of State Lease No. 1461 that falls within the above described tract, containing approximately **2,439 acres**, all as more particularly outlined on a plat on file in the Office of Mineral Resources, Department of Natural Resources. All bearings, distances and coordinates are based on Louisiana Coordinate System of 1927, (North or South Zone), where applicable.

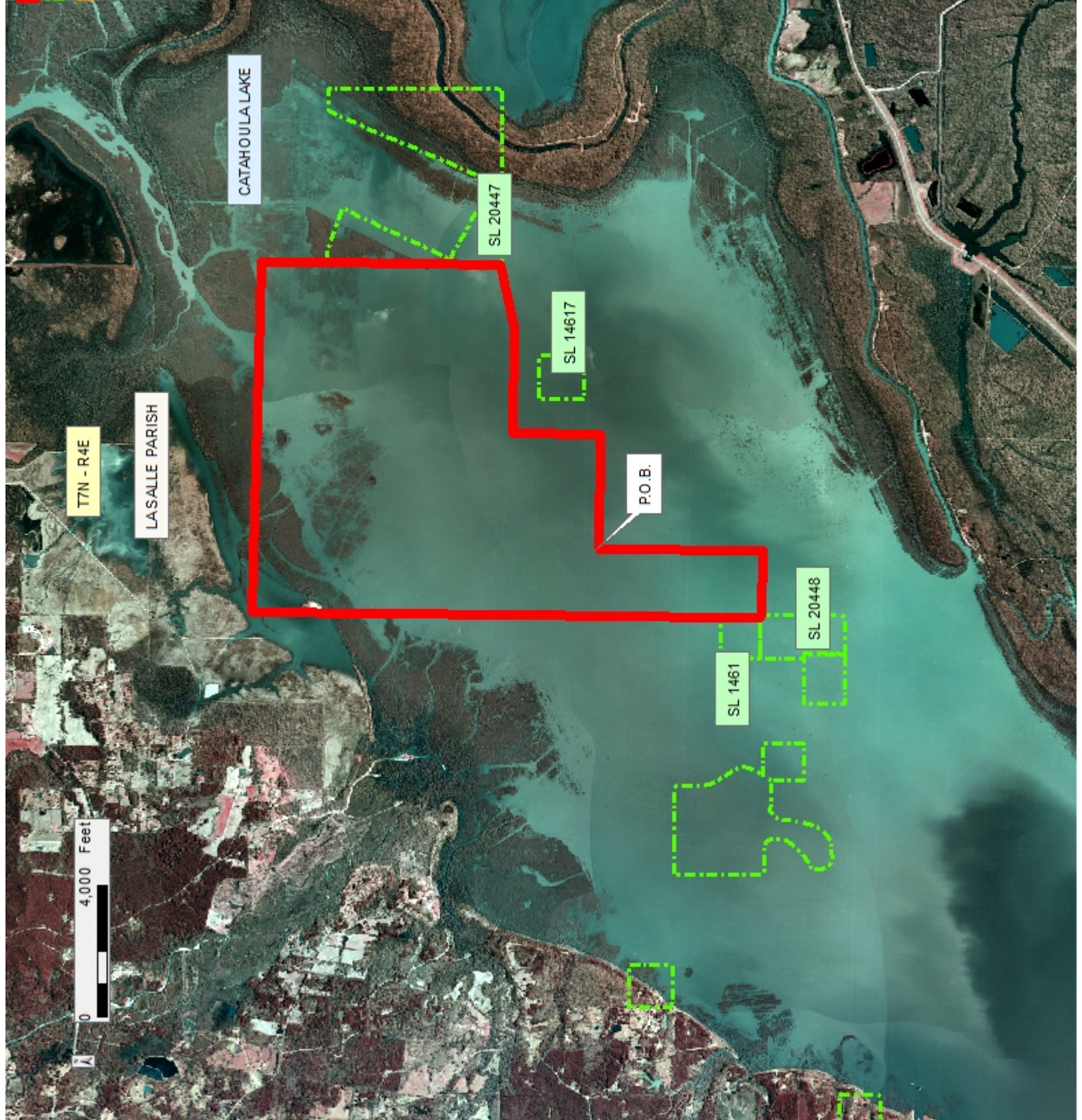
NOTE: The above description of the Tract nominated for lease has been provided and corrected, where required, exclusively by the nomination party. Any mineral lease selected from this Tract and awarded by the Louisiana State Mineral and Energy Board shall be without warranty of any kind, either express, implied, or statutory, including, but not limited to, the implied warranties of merchantability and fitness for a particular purpose. Should the mineral lease awarded by the Louisiana State Mineral and Energy Board be subsequently modified, cancelled or abrogated due to the existence of conflicting leases, operating agreements, private claims or other future obligations or conditions which may affect all or any portion of the leased Tract, it shall not relieve the Lessee of the obligation to pay any bonus due thereon to the Louisiana State Mineral and Energy Board, nor shall the Louisiana State Mineral and Energy Board be

obligated to refund any consideration paid by the Lessor prior to such modification, cancellation, or abrogation, including, but not limited to, bonuses, rentals and royalties.

Applicant: LESLIE M. COOPER

Bidder	Cash Payment	Price/Acre	Rental	Oil	Gas	Other

12020029
 Active Leases
 Counties
 IMAGERY.DOQQ_2004_1



TRACT 42488 - Lasalle Parish, Louisiana

All of the lands now or formerly constituting the beds and bottoms of all water bodies of every nature and description as to which title is vested in the State of Louisiana, together with all islands arising therein and other lands formed by accretion or by reliction, where allowed by law, excepting tax adjudicated lands, and not presently under mineral lease on February 8, 2012, situated in Lasalle Parish, Louisiana, and more particularly described as follows: Beginning at Southwest corner of State Lease No. 18951, as amended, having Coordinates of X = 2,121,498.64 and Y = 320,940.00; thence along the boundary of said State Lease No. 18951 the following courses: East 2,600.00 feet to a point having Coordinates of X = 2,124,138.64 and Y = 320,940.00 and North 1,320.00 feet to its Northeast corner and the Southeast corner of State Lease No. 20046 having Coordinates of X = 2,124,138.65 and Y = 322,260.00; thence continue North 1,449.31 feet along the East boundary of said State Lease No. 20046 to its Northeast corner having Coordinates of X = 2,124,134.47 and Y = 323,709.28; thence North 41 degrees 59 minutes 44 seconds East 4,000.70 feet to a point having Coordinates of X = 2,126,811.24 and Y = 326,682.58; thence South 6,019.75 feet to a point having Coordinates of X = 2,126,811.24 and Y = 320,662.83; thence South 46 degrees 51 minutes 18 seconds West approximately 7,236 feet to a point on the North boundary of a Northern retained portion of State Lease No. 1461, as amended; thence Westerly along the North boundary of said State Lease No. 1461 to its Northwest corner; thence Westerly approximately 2,785 feet to the Southeast corner of the West retained tract of State Lease No. 1461, as amended; thence Northerly and Westerly along the boundary of said State Lease No. 1461 to its Northwest corner; thence North 21 degrees 45 minutes 28 seconds East approximately 5,601 feet to a point having Coordinates of X = 2,116,997.02 and Y = 322,260.00; thence East 4,442.98 feet to the Southwest corner of State Lease No. 16827, as amended having Coordinates of X = 2,121,440.00 and Y = 322,260.00; thence continue East 58.64 feet along the South boundary of said State Lease No. 16827 to the Northwest corner of said State Lease No. 18951 having Coordinates of X = 2,121,498.64 and Y = 322,260.00; thence South 1,320.00 feet along the West boundary of said State Lease No. 18951 to the point of beginning, **LESS AND EXCEPT** any portion of State Lease No. 1461 and State Lease No. 16827 that falls within the above described tract, containing approximately **1252 acres**, all as more particularly outlined on a plat on file in the Office of Mineral Resources, Department of Natural Resources. All bearings, distances and coordinates are based on Louisiana Coordinate System of 1927, (North or South Zone), where applicable.

NOTE: The above description of the Tract nominated for lease has been provided and corrected, where required, exclusively by the nomination party. Any mineral lease selected from this Tract and awarded by the Louisiana State Mineral and Energy Board shall be without warranty of any kind, either express, implied, or statutory, including, but not limited to, the implied warranties of merchantability and fitness for a particular purpose. Should the mineral lease awarded by the Louisiana State Mineral

and Energy Board be subsequently modified, cancelled or abrogated due to the existence of conflicting leases, operating agreements, private claims or other future obligations or conditions which may affect all or any portion of the leased Tract, it shall not relieve the Lessee of the obligation to pay any bonus due thereon to the Louisiana State Mineral and Energy Board, nor shall the Louisiana State Mineral and Energy Board be obligated to refund any consideration paid by the Lessor prior to such modification, cancellation, or abrogation, including, but not limited to, bonuses, rentals and royalties.

Applicant: LESLIE M. COOPER

Bidder	Cash Payment	Price/Acre	Rental	Oil	Gas	Other

Legend

12020030

Active Leases

IMAGERY.DOQQ_2004_1M

CATAHOULA LAKE

T7N - R4E

SL 20046

SL 16827

SL 18951

P.O.B.

SL 1461

SL 1461

SL 1461

T7N - R3E

0 2,000 Feet

TRACT 42489 - Lasalle Parish, Louisiana

All of the lands now or formerly constituting the beds and bottoms of all water bodies of every nature and description as to which title is vested in the State of Louisiana, together with all islands arising therein and other lands formed by accretion or by reliction, where allowed by law, excepting tax adjudicated lands, and not presently under mineral lease on February 8, 2012, situated in Lasalle Parish, Louisiana, and more particularly described as follows: Beginning at a point having Coordinates of X = 2,130,850.25 and Y = 313,120.00; thence North 00 degrees 15 minutes 56 seconds East 2,623.42 feet to a point having Coordinates of X = 2,130,862.40 and Y = 315,743.39; thence Northeasterly approximately 3,888 feet to the Southwest corner of State Lease No. 14617, as amended; thence Easterly and Northerly along the boundary of said State Lease No. 14617 to its Northeast corner; thence Northeasterly approximately 1,114 feet on a straight line to a point having Coordinates of X = 2,135,562.47 and Y = 320,760.00; thence North 76 degrees 29 minutes 57 seconds East 1,989.33 feet to the Southwest corner of State Lease No. 20447 having Coordinates of X = 2,137,496.83 and Y = 321,224.43; thence East 1,286.80 feet along the South boundary of said State Lease No. 20447 to a point having Coordinates of X = 2,138,783.63 and Y = 321,224.43; thence South 11,330.10 feet to a point having Coordinates of X = 2,138,783.63 and Y = 309,894.33; thence West 6,505.16 feet to a point having Coordinates of X = 2,132,278.48 and Y = 309,894.33; thence North 3,225.67 feet to a point having Coordinates of X = 2,132,278.48 and Y = 313,120.00; thence West 1,428.23 feet to the point of beginning, **LESS AND EXCEPT** any portion of State Lease No. 14617 that falls within the above described tract, containing approximately **1,467 acres**, all as more particularly outlined on a plat on file in the Office of Mineral Resources, Department of Natural Resources. All bearings, distances and coordinates are based on Louisiana Coordinate System of 1927, (North or South Zone), where applicable.

NOTE: The above description of the Tract nominated for lease has been provided and corrected, where required, exclusively by the nomination party. Any mineral lease selected from this Tract and awarded by the Louisiana State Mineral and Energy Board shall be without warranty of any kind, either express, implied, or statutory, including, but not limited to, the implied warranties of merchantability and fitness for a particular purpose. Should the mineral lease awarded by the Louisiana State Mineral and Energy Board be subsequently modified, cancelled or abrogated due to the existence of conflicting leases, operating agreements, private claims or other future obligations or conditions which may affect all or any portion of the leased Tract, it shall not relieve the Lessee of the obligation to pay any bonus due thereon to the Louisiana State Mineral and Energy Board, nor shall the Louisiana State Mineral and Energy Board be obligated to refund any consideration paid by the Lessor prior to such modification, cancellation, or abrogation, including, but not limited to, bonuses, rentals and royalties.

Applicant: LESLIE M. COOPER

Bidder	Cash Payment	Price/Acre	Rental	Oil	Gas	Other

Legend

12020031

OMR_ACTIVE_LEASES

IMAGERY.DOQQ_2004_1M

0 4,000 Feet

LA SALLE PARISH

CATAHOULA LAKE

SL 20447

SL 14617

P.O.B.

TRACT 42490 - Lasalle Parish, Louisiana

All of the lands now or formerly constituting the beds and bottoms of all water bodies of every nature and description as to which title is vested in the State of Louisiana, together with all islands arising therein and other lands formed by accretion or by reliction, where allowed by law, excepting tax adjudicated lands, and not presently under mineral lease on February 8, 2012, situated in Lasalle Parish, Louisiana, and more particularly described as follows: Beginning at a point having Coordinates of X = 2,119,897.34 and Y = 302,424.35; thence North 40 degrees 29 minutes 13 seconds West 5,600.97 feet to a point having Coordinates of X = 2,116,260.77 and Y = 306,684.19; thence North 42 degrees 13 minutes 20 seconds East approximately 6,021 feet to a point on the south boundary of the Northern retained tract of State Lease No. 1461, as amended; thence along the boundary of said State Lease No. 1461 the following courses: Northeasterly, Easterly and Southerly to a point on the north boundary of State Lease No. 502, as amended; thence along the boundary of said State Lease No. 502 the following courses: Westerly, Southerly, Easterly and Northerly to the Southwest corner of Southern retained tract of State Lease No. 1461, as amended; thence Easterly along the southern boundary of said State Lease No. 1461 to its Southeast corner and the Southwest corner of State Lease No. 20448; thence along the boundary of said State Lease No. 20448 the following courses: Easterly and Northerly approximately 2,609 feet to its Northeast corner having Coordinates of X = 2,126,890.25 and Y = 313,120.00; thence East 5,388.23 feet to a point having Coordinates of 2,132,278.48 and Y = 313,120.00; thence South 7,654.91 feet to a point having Coordinates of X = 2,132,278.48 and Y = 305,465.09; thence Southwesterly approximately 4065 feet to the Southeast corner of the Eastern retained tract of State Lease No. 1462, as amended; thence along the boundary of said State Lease No. 1462 the following courses: Northerly, Westerly and Southerly to its Southwest corner; thence Southwesterly approximately 7,526 feet to the point of beginning, **LESS AND EXCEPT** any portion of State Lease No. 502, 1461 and 1462 that falls within the above described tract, containing approximately **2000 acres**, all as more particularly outlined on a plat on file in the Office of Mineral Resources, Department of Natural Resources. All bearings, distances and coordinates are based on Louisiana Coordinate System of 1927, (North or South Zone), where applicable.

NOTE: The above description of the Tract nominated for lease has been provided and corrected, where required, exclusively by the nomination party. Any mineral lease selected from this Tract and awarded by the Louisiana State Mineral and Energy Board shall be without warranty of any kind, either express, implied, or statutory, including, but not limited to, the implied warranties of merchantability and fitness for a particular purpose. Should the mineral lease awarded by the Louisiana State Mineral and Energy Board be subsequently modified, cancelled or abrogated due to the existence of conflicting leases, operating agreements, private claims or other future obligations or conditions which may affect all or any portion of the leased Tract, it shall not relieve the Lessee of the

obligation to pay any bonus due thereon to the Louisiana State Mineral and Energy Board, nor shall the Louisiana State Mineral and Energy Board be obligated to refund any consideration paid by the Lessor prior to such modification, cancellation, or abrogation, including, but not limited to, bonuses, rentals and royalties.

Applicant: LESLIE M. COOPER

Bidder	Cash Payment	Price/Acre	Rental	Oil	Gas	Other

Legend

12020032

Active_Leases

Counties

IMAGERY.DOQQ_2004_1M

CATAHOULA LAKE

SL 1461

SL 20448

SL 1461

SL 1461

SL 502

SL 1462

T6N - R4E

P.O.B.

LA SALLE PARISH

2,000 Feet

0

TRACT 42491 - Lasalle Parish, Louisiana

All of the lands now or formerly constituting the beds and bottoms of all water bodies of every nature and description as to which title is vested in the State of Louisiana, together with all islands arising therein and other lands formed by accretion or by reliction, where allowed by law, excepting tax adjudicated lands, and not presently under mineral lease on February 8, 2012, situated in Lasalle Parish, Louisiana, and more particularly described as follows: Beginning at the Southwest corner of State Lease No. 17313, as amended having Coordinates of X = 2,104,460.87 and Y = 298,670.00; thence along the boundary of said State Lease No. 17313 the following courses: East 1,339.13 feet to a point having Coordinates of X = 2,105,800.00 and Y = 298,670.00 and North 1,320.00 feet to its Northeast having Coordinates of X = 2,105,800.00 and Y = 299,990.00; thence Easterly approximately 2,770 feet to the Northwest corner of the Southern retained tract of State Lease No. 1462; thence Southerly approximately 1308 feet, Easterly approximately 1308 feet, Northerly approximately 1308 feet, Easterly approximately 1308 feet, Northerly approximately 1327 feet, Easterly approximately 1308 feet and Northerly approximately 1308 feet to its Northeast corner; thence North 42 degrees 13 minutes 20 seconds East approximately 5,591 feet to a point having Coordinates of X = 2,116,260.77 and Y = 306,684.19; thence South 40 degrees 29 minutes 13 seconds East 5,600.97 feet to a point having Coordinates of X = 2,119,897.34 and Y = 302,424.35; thence South 50 degrees 10 minutes 12 seconds West 4,247.59 feet to a point having Coordinates of X = 2,116,635.41 and Y = 299,703.71; thence South 6,067.17 feet to a point having Coordinates of X = 2,116,635.41 and Y = 293,636.55; thence West 12,174.54 feet to a point having Coordinates of X = 2,104,460.87 and Y = 293,636.55; thence North 5,033.45 feet to the point of beginning, **LESS AND EXCEPT** any portion of State Lease No. 1462 that falls within the above described tract, containing approximately **2427 acres**, all as more particularly outlined on a plat on file in the Office of Mineral Resources, Department of Natural Resources. All bearings, distances and coordinates are based on Louisiana Coordinate System of 1927, (North or South Zone), where applicable.

NOTE: The above description of the Tract nominated for lease has been provided and corrected, where required, exclusively by the nomination party. Any mineral lease selected from this Tract and awarded by the Louisiana State Mineral and Energy Board shall be without warranty of any kind, either express, implied, or statutory, including, but not limited to, the implied warranties of merchantability and fitness for a particular purpose. Should the mineral lease awarded by the Louisiana State Mineral and Energy Board be subsequently modified, cancelled or abrogated due to the existence of conflicting leases, operating agreements, private claims or other future obligations or conditions which may affect all or any portion of the leased Tract, it shall not relieve the Lessee of the obligation to pay any bonus due thereon to the Louisiana State Mineral and Energy Board, nor shall the Louisiana State Mineral and Energy Board be obligated to refund any consideration paid by the Lessor prior to such

modification, cancellation, or abrogation, including, but not limited to, bonuses, rentals and royalties.

NOTE: The above Tract is located upon a restricted scenic river and all operations in this area must be conducted in strict conformity with the regulations of the Corps of Engineers, U.S. Army.

Applicant: LESLIE M. COOPER

Bidder	Cash Payment	Price/Acre	Rental	Oil	Gas	Other

Legend
12020033
Active Leases
IMAGE RY.D00Q_2004_1M

CATAHOULA LAKE

LASALLE PARISH

SL 1462

SL 1462

SL 1462

SL 16826

SL 17313

P.O.B.



T6N - R3E

TRACT 42492 - Acadia and Jefferson Davis Parishes, Louisiana

All of the lands now or formerly constituting the beds and bottoms of all water bodies of every nature and description as to which title is vested in the State of Louisiana, together with all islands arising therein and other lands formed by accretion or by reliction, where allowed by law, excepting tax adjudicated lands, and not presently under mineral lease on February 8, 2012, situated in Acadia and Jefferson Davis Parishes, Louisiana, and more particularly described as follows: Beginning at a point having Coordinates of X = 1,583,000.00 and Y = 633,300.00; thence East 18,480.00 feet to a point having Coordinates of X = 1,601,480.00 and Y = 633,300.00; thence South 18,480.00 feet to a point having Coordinates of X = 1,601,480.00 and Y = 614,820.00; thence West 18,480.00 feet to a point having Coordinates of X = 1,583,000.00 and Y = 614,820.00; thence North 18,480.00 feet to the point of beginning, containing approximately **51 acres**, all as more particularly outlined on a plat on file in the Office of Mineral Resources, Department of Natural Resources. All bearings, distances and coordinates are based on Louisiana Coordinate System of 1927, (North or South Zone), where applicable.

NOTE: The above description of the Tract nominated for lease has been provided and corrected, where required, exclusively by the nomination party. Any mineral lease selected from this Tract and awarded by the Louisiana State Mineral and Energy Board shall be without warranty of any kind, either express, implied, or statutory, including, but not limited to, the implied warranties of merchantability and fitness for a particular purpose. Should the mineral lease awarded by the Louisiana State Mineral and Energy Board be subsequently modified, cancelled or abrogated due to the existence of conflicting leases, operating agreements, private claims or other future obligations or conditions which may affect all or any portion of the leased Tract, it shall not relieve the Lessee of the obligation to pay any bonus due thereon to the Louisiana State Mineral and Energy Board, nor shall the Louisiana State Mineral and Energy Board be obligated to refund any consideration paid by the Lessor prior to such modification, cancellation, or abrogation, including, but not limited to, bonuses, rentals and royalties.

Applicant: GADWALL PETROLEUM PROPERTIES

Bidder	Cash Payment	Price/Acre	Rental	Oil	Gas	Other

Legend

2020052

IMAGERY,DOQQ_2008_1M_CIR

ACADIA PARISH

T7S - R2W

T8S - R2W

JEFFERSON DAVIS PARISH

T7S - R3W

BAYOU NEZPIQUE

T8S - R3W

P.O.B.

0 4,000 Feet



TRACT 42493 - St. Charles Parish, Louisiana

All of the lands now or formerly constituting the beds and bottoms of all water bodies of every nature and description as to which title is vested in the State of Louisiana, together with all islands arising therein and other lands formed by accretion or by reliction, where allowed by law, excepting tax adjudicated lands, and not presently under mineral lease on February 8, 2012, situated in St. Charles Parish, Louisiana, and more particularly described as follows: Beginning at a point having Coordinates of X = 2,333,835.53 and Y = 398,777.22; thence East 4,299.47 feet to a point having Coordinates of X = 2,338,135.00 and Y = 398,777.22; thence South 8,949.00 feet to a point having Coordinates of X = 2,338,135.00 and Y = 389,828.22; thence West 17,546.16 feet to a point having Coordinates of X = 2,320,588.84 and Y = 389,828.22; thence North 55 degrees 57 minutes 30 seconds East 15,986.23 feet to the point of beginning, containing approximately **2,243.99 acres**, all as more particularly outlined on a plat on file in the Office of Mineral Resources, Department of Natural Resources. All bearings, distances and coordinates are based on Louisiana Coordinate System of 1927, (North or South Zone), where applicable.

NOTE: The above description of the Tract nominated for lease has been provided and corrected, where required, exclusively by the nomination party. Any mineral lease selected from this Tract and awarded by the Louisiana State Mineral and Energy Board shall be without warranty of any kind, either express, implied, or statutory, including, but not limited to, the implied warranties of merchantability and fitness for a particular purpose. Should the mineral lease awarded by the Louisiana State Mineral and Energy Board be subsequently modified, cancelled or abrogated due to the existence of conflicting leases, operating agreements, private claims or other future obligations or conditions which may affect all or any portion of the leased Tract, it shall not relieve the Lessee of the obligation to pay any bonus due thereon to the Louisiana State Mineral and Energy Board, nor shall the Louisiana State Mineral and Energy Board be obligated to refund any consideration paid by the Lessor prior to such modification, cancellation, or abrogation, including, but not limited to, bonuses, rentals and royalties.

NOTE: The State of Louisiana does hereby reserve, and this lease shall be subject to, the imprescriptible right of surface use in the nature of a servitude in favor of the Department of Natural Resources, including its Offices and Commissions, for the sole purpose of implementing, constructing, servicing and maintaining approved coastal zone management and/or restoration projects. Utilization of any and all rights derived under this lease by the mineral lessee, its agents, successors or assigns, shall not interfere with nor hinder the reasonable surface use by the Department of Natural Resources, its Offices or Commissions, as herein above reserved.

Applicant: TACOMA ENERGY CORPORATION

Bidder	Cash Payment	Price/Acre	Rental	Oil	Gas	Other

ST CHARLES PARISH

P.O.B.

T15S - R21E

LAKE SALVADOR

