

TRACT 42494 - St. Charles Parish, Louisiana

All of the lands now or formerly constituting the beds and bottoms of all water bodies of every nature and description as to which title is vested in the State of Louisiana, together with all islands arising therein and other lands formed by accretion or by reliction, where allowed by law, excepting tax adjudicated lands, and not presently under mineral lease on February 8, 2012, situated in St. Charles Parish, Louisiana, and more particularly described as follows: Beginning at a point having Coordinates of X = 2,338,135.00 and Y = 398,777.22; thence East 11,782.62 feet to a point having Coordinates of X = 2,349,917.62 and Y = 398,777.22; thence South 8,949.00 feet to a point having Coordinates of X = 2,349,917.62 and Y = 389,828.22; thence West 11,782.62 feet to a point having Coordinates of X = 2,338,135.00 and Y = 389,828.22; thence North 8,949.00 feet to the point of beginning, containing approximately **2,420.63 acres**, all as more particularly outlined on a plat on file in the Office of Mineral Resources, Department of Natural Resources. All bearings, distances and coordinates are based on Louisiana Coordinate System of 1927, (North or South Zone), where applicable.

NOTE: The above description of the Tract nominated for lease has been provided and corrected, where required, exclusively by the nomination party. Any mineral lease selected from this Tract and awarded by the Louisiana State Mineral and Energy Board shall be without warranty of any kind, either express, implied, or statutory, including, but not limited to, the implied warranties of merchantability and fitness for a particular purpose. Should the mineral lease awarded by the Louisiana State Mineral and Energy Board be subsequently modified, cancelled or abrogated due to the existence of conflicting leases, operating agreements, private claims or other future obligations or conditions which may affect all or any portion of the leased Tract, it shall not relieve the Lessee of the obligation to pay any bonus due thereon to the Louisiana State Mineral and Energy Board, nor shall the Louisiana State Mineral and Energy Board be obligated to refund any consideration paid by the Lessor prior to such modification, cancellation, or abrogation, including, but not limited to, bonuses, rentals and royalties.

NOTE: The State of Louisiana does hereby reserve, and this lease shall be subject to, the imprescriptible right of surface use in the nature of a servitude in favor of the Department of Natural Resources, including its Offices and Commissions, for the sole purpose of implementing, constructing, servicing and maintaining approved coastal zone management and/or restoration projects. Utilization of any and all rights derived under this lease by the mineral lessee, its agents, successors or assigns, shall not interfere with nor hinder the reasonable surface use by the Department of Natural Resources, its Offices or Commissions, as herein above reserved.

Bidder	Cash Payment	Price/ Acre	Rental	Oil	Gas	Other
--------	-----------------	----------------	--------	-----	-----	-------

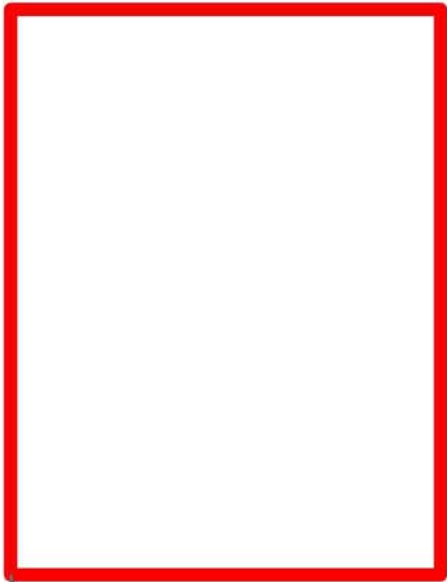
Applicant: TACOMA ENERGY CORPORATION



ST CHARLES PARISH

T15S - R22E

P.O.B.



LAKE SALVADOR

TRACT 42495 - St. Charles Parish, Louisiana

All of the lands now or formerly constituting the beds and bottoms of all water bodies of every nature and description as to which title is vested in the State of Louisiana, together with all islands arising therein and other lands formed by accretion or by reliction, where allowed by law, excepting tax adjudicated lands, and not presently under mineral lease on February 8, 2012, situated in St. Charles Parish, Louisiana, and more particularly described as follows: Beginning at a point having Coordinates of X = 2,320,588.84 and Y = 389,828.22; thence East 6,181.46 feet to a point having Coordinates of X = 2,326,770.30 and Y = 389,828.22; thence South 00 degrees 40 minutes 46 seconds West 7,215.03 feet to a point on the North boundary of State Lease No. 20626 having Coordinates of X = 2,326,684.73 and Y = 382,613.69; thence along the boundary of said State Lease No. 20626 the following courses: South 80 degrees 42 minutes 32 seconds West 3,340.31 feet to a point having Coordinates of X = 2,323,388.25 and Y = 382,074.39 and South 38 degrees 43 minutes 38 seconds East 652.05 feet to the Northernmost Northeast corner of State Lease No. 20643 having Coordinates of X = 2,323,796.18 and Y = 381,565.71; thence along the boundary of said State Lease No. 20643 the following courses: North 89 degrees 47 minutes 46 seconds West 10.68 feet to a point having Coordinates of X = 2,323,785.50 and Y = 381,565.75 and South 40 degrees 50 minutes 39 seconds West 1,489.63 feet to the Northeast corner of State Lease No. 19774 having Coordinates of X = 2,322,811.28 and Y = 380,438.86; thence along the boundary of said State Lease No. 19774 the following courses: West 6,107.02 feet to a point having Coordinates of X = 2,316,704.26 and Y = 380,438.86 and South 141.64 feet to a point having Coordinates of X = 2,316,704.26 and Y = 380,297.22; thence West 3,746.64 feet to a point having Coordinates of X = 2,312,957.62 and Y = 380,297.22; thence North 4,283.11 feet to a point having Coordinates of X = 2,312,957.62 and Y = 384,580.33; thence North 55 degrees 29 minutes 03 seconds East 9,261.52 feet to the point of beginning, containing approximately **2,374.34 acres**, all as more particularly outlined on a plat on file in the Office of Mineral Resources, Department of Natural Resources. All bearings, distances and coordinates are based on Louisiana Coordinate System of 1927, (North or South Zone), where applicable.

NOTE: The above description of the Tract nominated for lease has been provided and corrected, where required, exclusively by the nomination party. Any mineral lease selected from this Tract and awarded by the Louisiana State Mineral and Energy Board shall be without warranty of any kind, either express, implied, or statutory, including, but not limited to, the implied warranties of merchantability and fitness for a particular purpose. Should the mineral lease awarded by the Louisiana State Mineral and Energy Board be subsequently modified, cancelled or abrogated due to the existence of conflicting leases, operating agreements, private claims or other future obligations or conditions which may affect all or any portion of the leased Tract, it shall not relieve the Lessee of the obligation to pay any bonus due thereon to the Louisiana State Mineral and Energy Board, nor shall the Louisiana State Mineral and Energy Board be

obligated to refund any consideration paid by the Lessor prior to such modification, cancellation, or abrogation, including, but not limited to, bonuses, rentals and royalties.

NOTE: The State of Louisiana does hereby reserve, and this lease shall be subject to, the imprescriptible right of surface use in the nature of a servitude in favor of the Department of Natural Resources, including its Offices and Commissions, for the sole purpose of implementing, constructing, servicing and maintaining approved coastal zone management and/or restoration projects. Utilization of any and all rights derived under this lease by the mineral lessee, its agents, successors or assigns, shall not interfere with nor hinder the reasonable surface use by the Department of Natural Resources, its Offices or Commissions, as herein above reserved.

Applicant: TACOMA ENERGY CORPORATION

Bidder	Cash Payment	Price/ Acre	Rental	Oil	Gas	Other

Legend

12020016

Active Leases

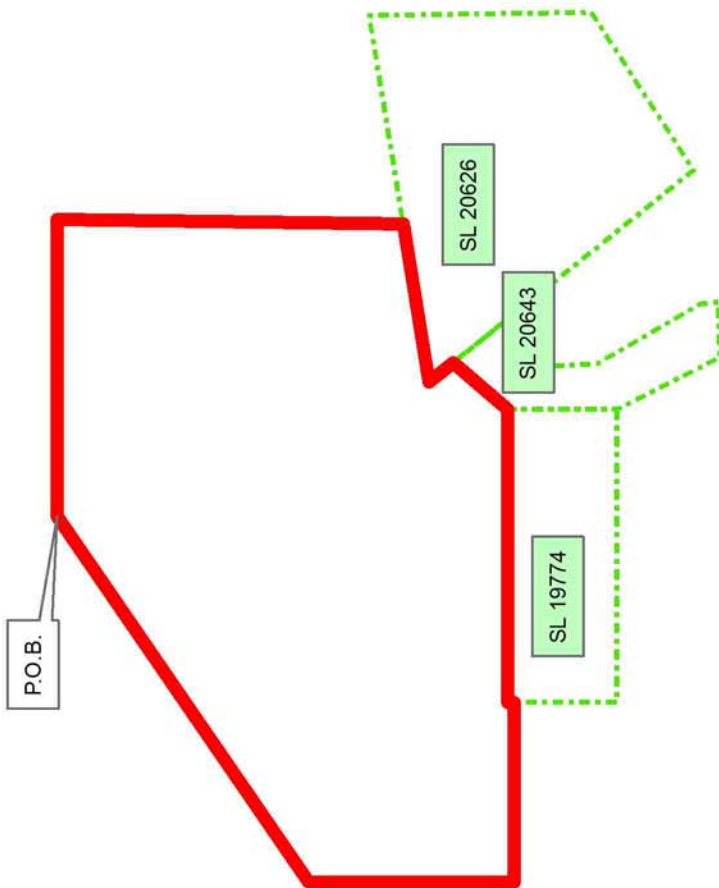


ST CHARLES PARISH

T15S - R21E

P.O.B.

LAKE SALVADOR



TRACT 42496 - Lafourche and St. Charles Parishes, Louisiana

All of the lands now or formerly constituting the beds and bottoms of all water bodies of every nature and description as to which title is vested in the State of Louisiana, together with all islands arising therein and other lands formed by accretion or by reliction, where allowed by law, excepting tax adjudicated lands, and not presently under mineral lease on February 8, 2012, situated in Lafourche and St. Charles Parishes, Louisiana, and more particularly described as follows: Beginning at a point having Coordinates of X = 2,326,770.30 and Y = 389,828.22; thence East 11,364.70 feet to a point having Coordinates of X = 2,338,135.00 and Y = 389,828.22; thence South 4,720.22 feet to the Northeast corner of State Lease No. 19199 having Coordinates of X = 2,338,135.00 and Y = 385,108.00; thence along the boundary of said State Lease No. 19199 the following courses: West 1,832.35 feet to a point having Coordinates of X = 2,336,302.65 and Y = 385,108.00, South 16 degrees 44 minutes 09 second East 858.03 feet to a point having Coordinates of X = 2,336,549.73 and Y = 384,286.31 and North 72 degrees 05 minutes 07 seconds East 1,666.05 feet to its Southeast corner having Coordinates of X = 2,338,135.00 and Y = 384,798.79; thence South 1,400.37 feet to the Northeast corner of State Lease No. 20624 having Coordinates of X = 2,338,135.00 and Y = 383,398.42; thence along the boundary of said State Lease No. 20624 the following courses: South 80 degrees 34 minutes 29 seconds West 2,164.22 feet to a point having Coordinates of X = 2,336,000.00 and Y = 383,044.00, South 12 degrees 33 minutes 41 seconds West 2,299.03 feet to a point having Coordinates of X = 2,335,500.00 and Y = 380,800.00, South 73 degrees 04 minutes 21 seconds East 2,404.16 feet to a point having Coordinates of X = 2,337,800.00 and Y = 380,100.00 and North 88 degrees 53 minutes 16 seconds East 335.06 feet to its Southeast corner having Coordinates of X = 2,338,135.00 and Y = 380,106.51; thence South 441.28 feet to the Northeast corner of State Lease No. 19200 having Coordinates of X = 2,338,135.00 and Y = 379,665.23; thence along the boundary of said State Lease No. 19200 the following courses: North 85 degrees 57 minutes 27 seconds West 236.05 feet to a point having Coordinates of X = 2,337,899.54 and Y = 379,681.87, South 03 degrees 56 minutes 50 seconds West 2,534.86 feet to a point having Coordinates of X = 2,337,725.05 and Y = 377,153.02 and South 86 degrees 12 minutes 04 seconds East 410.85 feet to its Southeast corner having Coordinates of X = 2,338,135.00 and Y = 377,125.80; thence South 3,825.80 feet to a point having Coordinates of X = 2,338,135.00 and Y = 373,300.00; thence West 952.92 feet to a point on the East boundary of State Lease No. 19201 having Coordinates of X = 2,337,182.08 and Y = 373,300.00; thence along the boundary of said State Lease No. 19201 the following courses: North 20 degrees 42 minutes 16 seconds West 7,492.91 feet to a point having Coordinates of X = 2,334,533.00 and Y = 380,309.00, South 71 degrees 21 minutes 39 seconds West 2,040.00 to a point having Coordinates of X = 2,332,600.00 and Y = 379,657.00 and South 17 degrees 57 minutes 47 seconds East 1,009.28 feet to a point on its West boundary having Coordinates of X = 2,332,911.27 and Y = 378,696.91; West 1,819.53 feet to the Southeast corner of State Lease No. 20626 having Coordinates of X = 2,331,091.74 and Y = 378,696.91; thence along the boundary of said

State Lease No. 20626 the following courses: North 00 degrees 52 minutes 42 seconds West 4,626.69 feet to a point having Coordinates of X = 2,331,020.82 and Y = 383,323.06 and South 80 degrees 42 minutes 32 seconds West 4,393.73 feet to a point on its North boundary having Coordinates of X = 2,326,684.73 and Y = 382,613.69; thence North 00 degrees 40 minutes 46 seconds East 7,215.03 feet to the point of beginning, containing approximately **2,472.34 acres**, all as more particularly outlined on a plat on file in the Office of Mineral Resources, Department of Natural Resources. All bearings, distances and coordinates are based on Louisiana Coordinate System of 1927, (North or South Zone), where applicable.

NOTE: The above description of the Tract nominated for lease has been provided and corrected, where required, exclusively by the nomination party. Any mineral lease selected from this Tract and awarded by the Louisiana State Mineral and Energy Board shall be without warranty of any kind, either express, implied, or statutory, including, but not limited to, the implied warranties of merchantability and fitness for a particular purpose. Should the mineral lease awarded by the Louisiana State Mineral and Energy Board be subsequently modified, cancelled or abrogated due to the existence of conflicting leases, operating agreements, private claims or other future obligations or conditions which may affect all or any portion of the leased Tract, it shall not relieve the Lessee of the obligation to pay any bonus due thereon to the Louisiana State Mineral and Energy Board, nor shall the Louisiana State Mineral and Energy Board be obligated to refund any consideration paid by the Lessor prior to such modification, cancellation, or abrogation, including, but not limited to, bonuses, rentals and royalties.

NOTE: The State of Louisiana does hereby reserve, and this lease shall be subject to, the imprescriptible right of surface use in the nature of a servitude in favor of the Department of Natural Resources, including its Offices and Commissions, for the sole purpose of implementing, constructing, servicing and maintaining approved coastal zone management and/or restoration projects. Utilization of any and all rights derived under this lease by the mineral lessee, its agents, successors or assigns, shall not interfere with nor hinder the reasonable surface use by the Department of Natural Resources, its Offices or Commissions, as herein above reserved.

Applicant: TACOMA ENERGY CORPORATION

Bidder	Cash Payment	Price/ Acre	Rental	Oil	Gas	Other

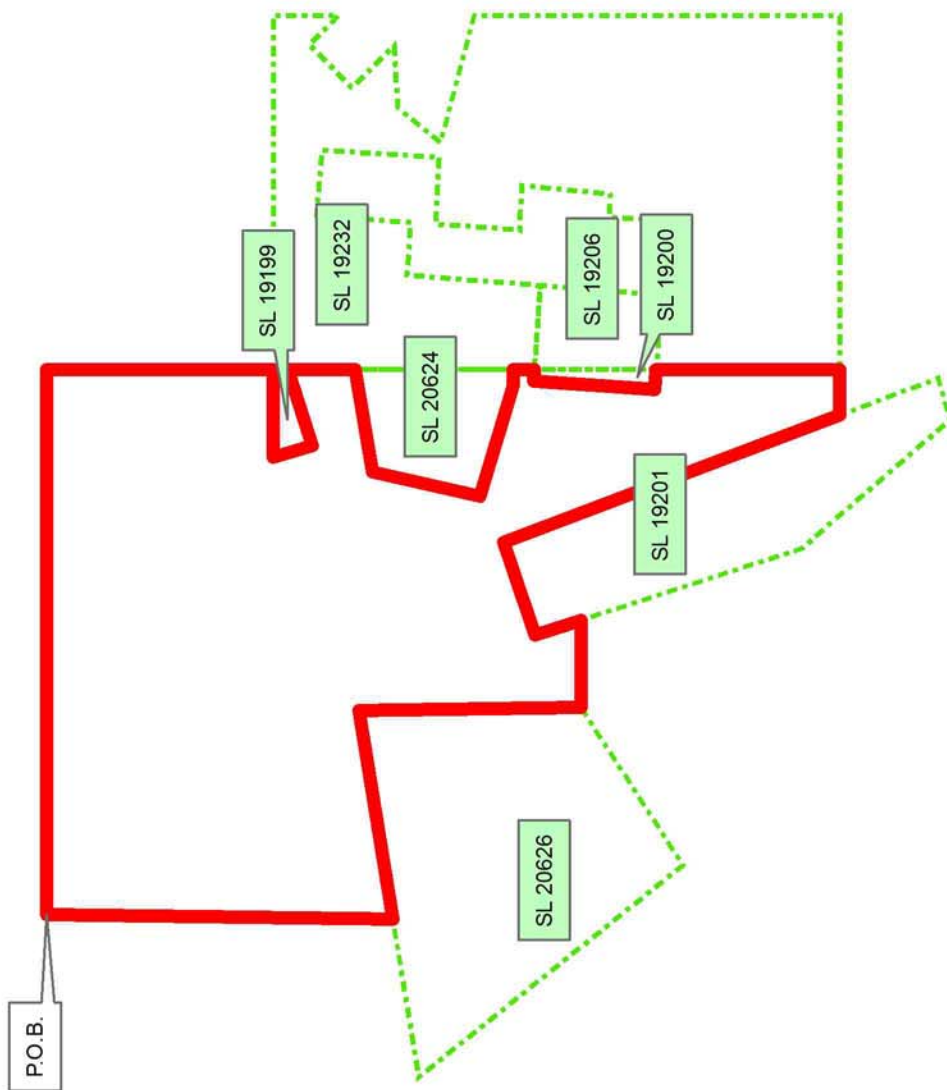
Legend

12020015

Active Leases

ST CHARLES PARISH

LAKE SALVADOR



T15S - R21E

TRACT 42497 - Lafourche and St. Charles Parishes, Louisiana

All of the lands now or formerly constituting the beds and bottoms of all water bodies of every nature and description as to which title is vested in the State of Louisiana, together with all islands arising therein and other lands formed by accretion or by reliction, where allowed by law, excepting tax adjudicated lands, and not presently under mineral lease on February 8, 2012, situated in Lafourche and St. Charles Parishes, Louisiana, and more particularly described as follows: Beginning at a point having Coordinates of X = 2,338,135.00 and Y = 389,828.22; thence East 11,782.62 feet to having Coordinates of X = 2,349,917.62 and Y = 389,828.22; thence South 16,528.22 feet to a point having Coordinates of X = 2,349,917.62 and Y = 373,300.00; thence West 4,407.62 feet to the Southeast corner of State Lease No. 19232 having Coordinates of X = 2,345,510.00 and Y = 373,300.00; thence North 7,622.61 feet along the East boundary of said State Lease No. 19232 to the Southeast corner of State Lease No. 19204 having Coordinates of X = 2,345,510.00 and Y = 380,922.61; thence continue North 1,023.13 feet along the East boundary of said State Lease No. 19204 to its Northeast corner also being the Southeast corner of State Lease No. 19203 having Coordinates of X = 2,345,510.00 and Y = 381,945.74; thence continue North 1,807.05 feet along the East boundary of said State Lease No. 19203 to its Northeast corner also being a point on the East boundary of said State Lease No. 19232 having Coordinates of X = 2,345,510.00 and Y = 383,752.79; thence along the boundary of said State Lease No. 19232 the following courses: North 1,355.21 feet to a point having Coordinates of X = 2,345,510.00 and Y = 385,108.00 and West 6,418.50 feet to the Northeast corner of State Lease No. 19207 having Coordinates of X = 2,339,091.50 and Y = 385,108.00; thence continue West 956.50 feet along the North boundary of said State Lease No. 19207 to its Northwest corner having Coordinates of X = 2,338,135.00 and Y = 385,108.00; thence North 4,720.22 feet to the point of beginning, containing approximately **2,471.57 acres**, all as more particularly outlined on a plat on file in the Office of Mineral Resources, Department of Natural Resources. All bearings, distances and coordinates are based on Louisiana Coordinate System of 1927, (North or South Zone), where applicable.

NOTE: The above description of the Tract nominated for lease has been provided and corrected, where required, exclusively by the nomination party. Any mineral lease selected from this Tract and awarded by the Louisiana State Mineral and Energy Board shall be without warranty of any kind, either express, implied, or statutory, including, but not limited to, the implied warranties of merchantability and fitness for a particular purpose. Should the mineral lease awarded by the Louisiana State Mineral and Energy Board be subsequently modified, cancelled or abrogated due to the existence of conflicting leases, operating agreements, private claims or other future obligations or conditions which may affect all or any portion of the leased Tract, it shall not relieve the Lessee of the obligation to pay any bonus due thereon to the Louisiana State Mineral and Energy Board, nor shall the Louisiana State Mineral and Energy Board be

obligated to refund any consideration paid by the Lessor prior to such modification, cancellation, or abrogation, including, but not limited to, bonuses, rentals and royalties.

NOTE: The State of Louisiana does hereby reserve, and this lease shall be subject to, the imprescriptible right of surface use in the nature of a servitude in favor of the Department of Natural Resources, including its Offices and Commissions, for the sole purpose of implementing, constructing, servicing and maintaining approved coastal zone management and/or restoration projects. Utilization of any and all rights derived under this lease by the mineral lessee, its agents, successors or assigns, shall not interfere with nor hinder the reasonable surface use by the Department of Natural Resources, its Offices or Commissions, as herein above reserved.

Applicant: TACOMA ENERGY CORPORATION

Bidder	Cash Payment	Price/ Acre	Rental	Oil	Gas	Other



ST CHARLES PARISH

LAKE SALVADOR

LAFOURCHE PARISH

Legend

12020012

Active_Leases

Counties

P.O.B.

SL 19199

SL 19207

SL 19203

SL 19204

SL 19232

TRACT 42498 - Jefferson and Plaquemines Parishes, Louisiana

All of the lands now or formerly constituting the beds and bottoms of all water bodies of every nature and description as to which title is vested in the State of Louisiana, together with all islands arising therein and other lands formed by accretion or by reliction, where allowed by law, excepting tax adjudicated lands, and not presently under mineral lease on February 8, 2012, situated in Jefferson and Plaquemines Parishes, Louisiana, and more particularly described as follows: Beginning at a point having Coordinates of X = 2,401,770.00 and Y = 380,280.00; thence North for a distance of 5,350.00 feet to a point having Coordinates of X = 2,401,770.00 and Y = 385,630.00; thence East for a distance of 7,100.00 feet to a point having Coordinates of X = 2,408,870.00 and Y = 385,630.00; thence South for a distance of 5,350.00 feet to a point having Coordinates of X = 2,408,870.00 and Y = 380,280.00; thence West for a distance of 7,100.00 feet to the point of beginning, containing approximately **92 acres**, all as more particularly outlined on a plat on file in the Office of Mineral Resources, Department of Natural Resources. All bearings, distances and coordinates are based on Louisiana Coordinate System of 1927, (North or South Zone), where applicable.

NOTE: The above description of the Tract nominated for lease has been provided and corrected, where required, exclusively by the nomination party. Any mineral lease selected from this Tract and awarded by the Louisiana State Mineral and Energy Board shall be without warranty of any kind, either express, implied, or statutory, including, but not limited to, the implied warranties of merchantability and fitness for a particular purpose. Should the mineral lease awarded by the Louisiana State Mineral and Energy Board be subsequently modified, cancelled or abrogated due to the existence of conflicting leases, operating agreements, private claims or other future obligations or conditions which may affect all or any portion of the leased Tract, it shall not relieve the Lessee of the obligation to pay any bonus due thereon to the Louisiana State Mineral and Energy Board, nor shall the Louisiana State Mineral and Energy Board be obligated to refund any consideration paid by the Lessor prior to such modification, cancellation, or abrogation, including, but not limited to, bonuses, rentals and royalties.

NOTE: The State of Louisiana does hereby reserve, and this lease shall be subject to, the imprescriptible right of surface use in the nature of a servitude in favor of the Department of Natural Resources, including its Offices and Commissions, for the sole purpose of implementing, constructing, servicing and maintaining approved coastal zone management and/or restoration projects. Utilization of any and all rights derived under this lease by the mineral lessee, its agents, successors or assigns, shall not interfere with nor hinder the reasonable surface use by the Department of Natural Resources, its Offices or Commissions, as herein above reserved.

Applicant: THOMAS M. KILLGORE, JR.

Bidder	Cash Payment	Price/ Acre	Rental	Oil	Gas	Other

Legend

120200017

Active Leases

IMAGERY.DOQQ_2008_1M_CIR

PLAQUEMINES PARISH

BAYOU DE FLEUR

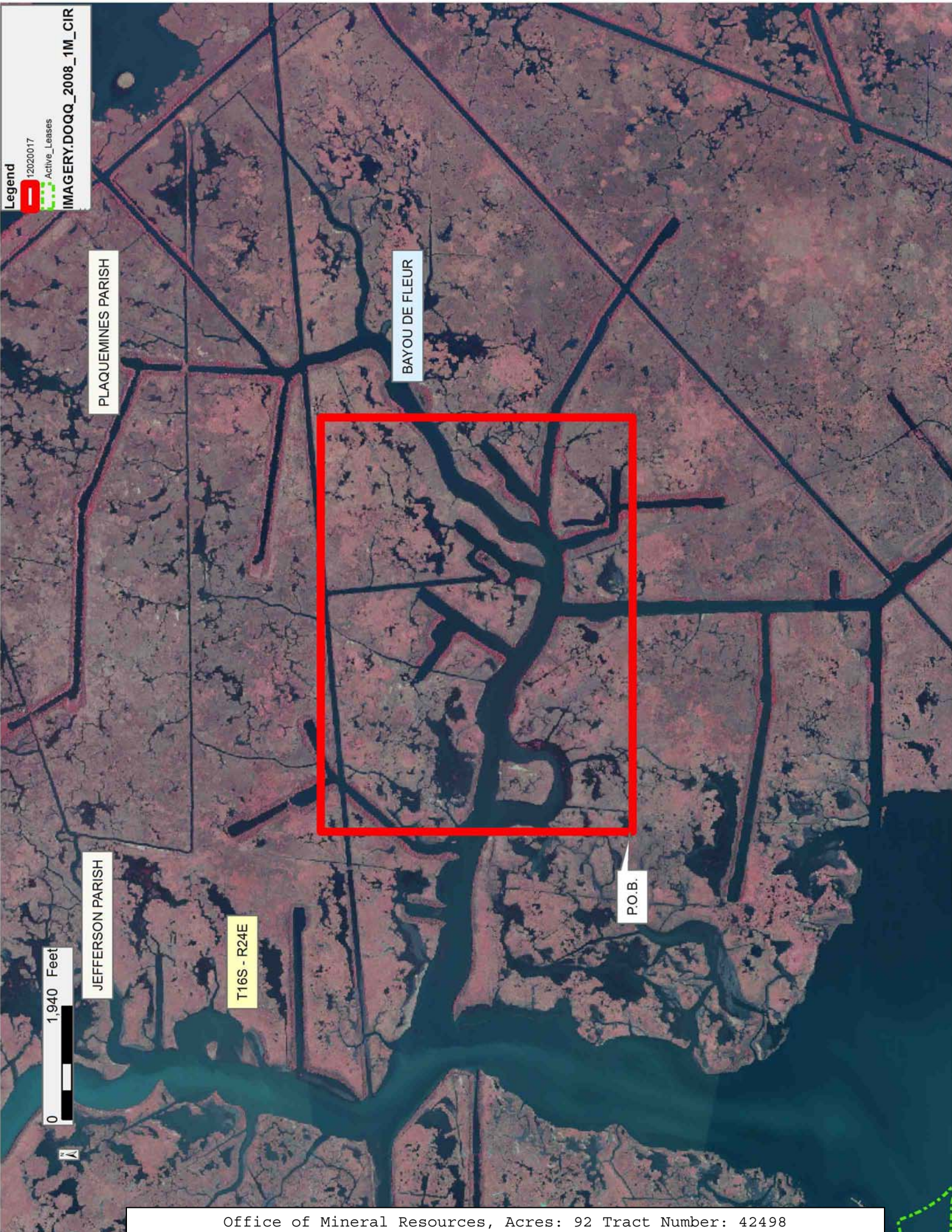


JEFFERSON PARISH

T16S - R24E

P.O.B.

0 1,940 Feet



TRACT 42499 - Lafourche and St. Charles Parishes, Louisiana

All of the lands now or formerly constituting the beds and bottoms of all water bodies of every nature and description as to which title is vested in the State of Louisiana, together with all islands arising therein and other lands formed by accretion or by reliction, where allowed by law, excepting tax adjudicated lands, and not presently under mineral lease on February 8, 2012, situated in Lafourche and St. Charles Parishes, Louisiana, and more particularly described as follows: Beginning at a point having Coordinates of X = 2,312,957.62 and Y = 380,297.22; thence East 3,746.64 feet to a point on the West boundary of State Lease No. 19774 having Coordinates of X = 2,316,704.26 and Y = 380,297.22; thence South 2,128.16 feet to its Southwest corner also being the Northwest corner of State Lease No. 20644 having Coordinates of X = 2,316,704.26 and Y = 378,169.06; thence along the boundary of said State Lease No. 20644 the following courses: South 2,359.06 feet to a point having Coordinates of X = 2,316,704.26 and Y = 375,810.00 and East 3,885.74 feet to its Southeast corner also being the Northwest corner of State Lease No. 20627 having Coordinates of X = 2,320,590.00 and Y = 375,810.00; thence along the boundary of said State Lease No. 20627 the following courses: South 3,356.63 feet to a point having Coordinates of X = 2,320,590.00 and Y = 372,453.37 and East 660.00 feet to a point having Coordinates of X = 2,321,250.00 and Y = 372,453.37; thence South 2,583.37 feet to the Northeast corner of State Lease No. 20628 having Coordinates of X = 2,321,250.00 and Y = 369,870.00; thence along the boundary of said State Lease No. 20628 the following courses: West 4,300.00 feet to a point having Coordinates of X = 2,316,950.00 and Y = 369,870.00, South 3,500.00 feet to a point having Coordinates of X = 2,316,950.00 and Y = 366,370.00 and East 4,300.00 feet to its Southeast corner having Coordinates of X = 2,321,250.00 and Y = 366,370.00; thence South 4,552.78 feet to a point having Coordinates of X = 2,321,250.00 and Y = 361,817.22; thence West 8,292.38 feet to a point having Coordinates of X = 2,312,957.62 and Y = 361,817.22; thence North 18,480.00 feet to the point of beginning, (This lease includes only waterbottoms claimed and owned by the state and specifically excludes any School Indemnity land located within the above described tract), containing approximately **1,564 acres**, all as more particularly outlined on a plat on file in the Office of Mineral Resources, Department of Natural Resources. All bearings, distances and coordinates are based on Louisiana Coordinate System of 1927, (North or South Zone), where applicable.

NOTE: The above description of the Tract nominated for lease has been provided and corrected, where required, exclusively by the nomination party. Any mineral lease selected from this Tract and awarded by the Louisiana State Mineral and Energy Board shall be without warranty of any kind, either express, implied, or statutory, including, but not limited to, the implied warranties of merchantability and fitness for a particular purpose. Should the mineral lease awarded by the Louisiana State Mineral and Energy Board be subsequently modified, cancelled or abrogated due to the existence of conflicting leases, operating agreements, private claims

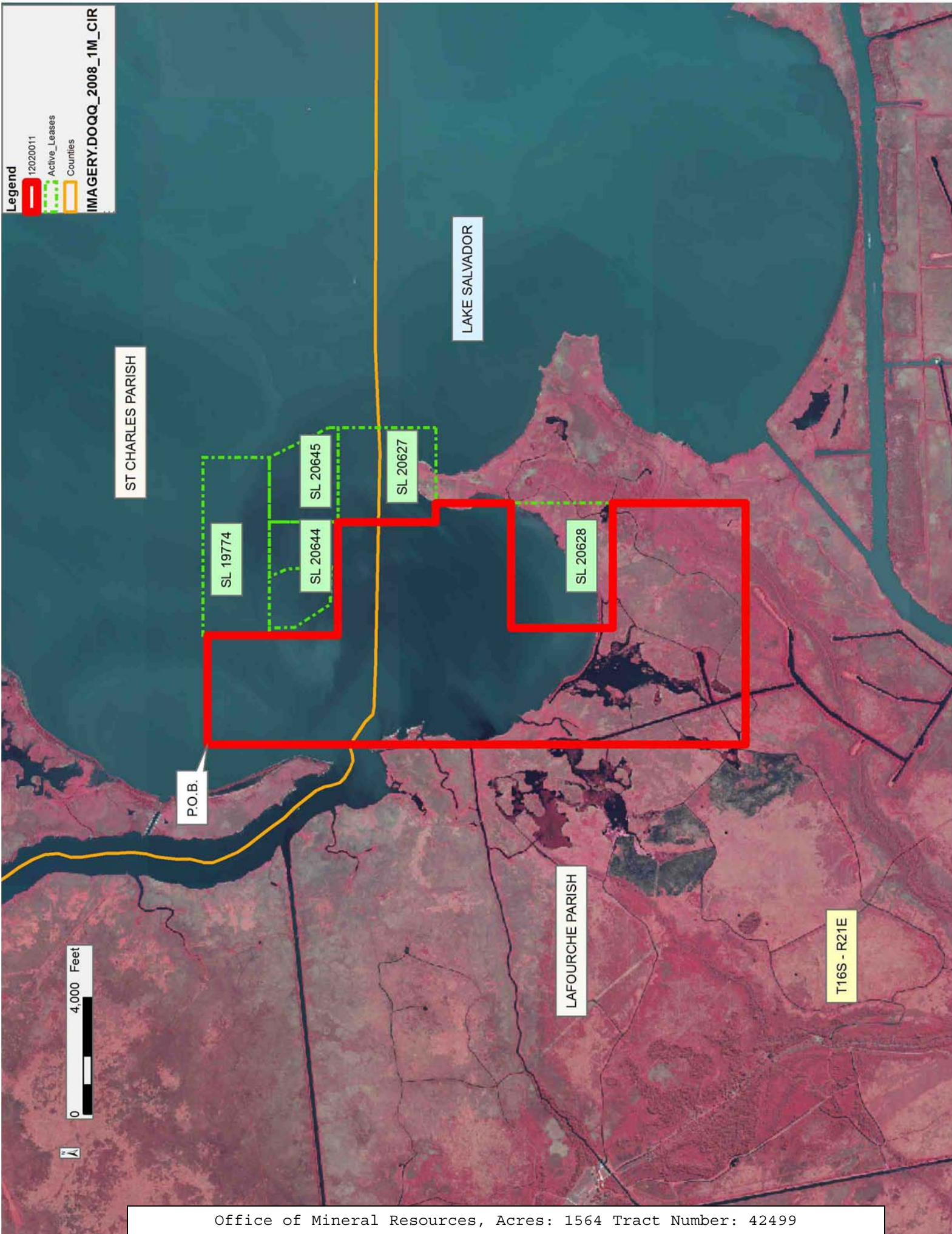
or other future obligations or conditions which may affect all or any portion of the leased Tract, it shall not relieve the Lessee of the obligation to pay any bonus due thereon to the Louisiana State Mineral and Energy Board, nor shall the Louisiana State Mineral and Energy Board be obligated to refund any consideration paid by the Lessor prior to such modification, cancellation, or abrogation, including, but not limited to, bonuses, rentals and royalties.

NOTE: The State of Louisiana does hereby reserve, and this lease shall be subject to, the imprescriptible right of surface use in the nature of a servitude in favor of the Department of Natural Resources, including its Offices and Commissions, for the sole purpose of implementing, constructing, servicing and maintaining approved coastal zone management and/or restoration projects. Utilization of any and all rights derived under this lease by the mineral lessee, its agents, successors or assigns, shall not interfere with nor hinder the reasonable surface use by the Department of Natural Resources, its Offices or Commissions, as herein above reserved.

NOTE: The above Tract is located upon a restricted scenic river and all operations in this area must be conducted in strict conformity with the regulations of the Corps of Engineers, U.S. Army.

Applicant: TACOMA ENERGY CORPORATION

Bidder	Cash Payment	Price/ Acre	Rental	Oil	Gas	Other



TRACT 42500 - Lafourche and St. Charles Parishes, Louisiana

All of the lands now or formerly constituting the beds and bottoms of all water bodies of every nature and description as to which title is vested in the State of Louisiana, together with all islands arising therein and other lands formed by accretion or by reliction, where allowed by law, excepting tax adjudicated lands, and not presently under mineral lease on February 8, 2012, situated in Lafourche and St. Charles Parishes, Louisiana, and more particularly described as follows: Beginning at the Northeast corner of State Lease No. 20627 and the Southeast corner of State Lease No. 20645 having Coordinates of X = 2,323,838.00 and Y = 375,810.00; thence North 327.43 feet along the East boundary of said State Lease No. 20645 to a point on the West boundary of State Lease No. 20643 having Coordinates of X = 2,323,838.00 and Y = 376,137.43; thence along the boundary of said State Lease No. 20643 the following courses: South 26 degrees 48 minutes 38 seconds East 138.01 to a point having Coordinates of X = 2,323,900.25 and Y = 376,014.25, North 87 degrees 53 minutes 59 seconds East 1,146.02 feet to a point having Coordinates of X = 2,325,045.50 and Y = 376,056.25, North 04 degrees 49 minutes 20 seconds West 365.79 feet to a point having Coordinates of X = 2,325,014.75 and Y = 376,420.75, North 30 degrees 06 minutes 23 seconds West 2,492.50 feet to a point having Coordinates of X = 2,323,764.50 and Y = 378,577.00, North 02 degrees 54 minutes 03 seconds West 1,230.08 feet to a point having Coordinates of X = 2,323,702.25 and Y = 379,805.50, South 88 degrees 58 minutes 49 seconds East 1,348.71 feet to a point having Coordinates of X = 2,325,050.75 and Y = 379,781.50 and North 00 degrees 01 minutes 27 seconds West 219.89 feet to a point on the West boundary of State Lease No. 20626 having Coordinates of X = 2,325,050.66 and Y = 380,001.39; thence along the boundary of said State Lease No. 20626 the following courses: South 38 degrees 43 minutes 38 seconds East 4,399.28 feet to a point having Coordinates of X = 2,327,802.91 and Y = 376,569.37 and North 57 degrees 06 minutes 04 seconds East 3,917.00 feet to its Southeast corner having Coordinates of X = 2,331,091.74 and Y = 378,696.91; thence East 1,819.53 feet to a point on West boundary of State Lease No. 19201 having Coordinates of X = 2,332,911.27 and Y = 378,696.91; thence along the boundary of said State Lease No. 19201 the following courses: South 17 degrees 57 minutes 47 seconds East 4,827.21 feet to a point having Coordinates of X = 2,334,400.00 and Y = 374,105.00 and South 40 degrees 57 minutes 13 seconds East 1,065.89 feet to a point having Coordinates of X = 2,335,098.64 and Y = 373,300.00; thence West 6,538.63 feet to a point having Coordinates of X = 2,328,560.00 and Y = 373,300.00; thence South 11,482.78 feet to a point having Coordinates of X = 2,328,560.00 and Y = 361,817.22; thence West 7,310.00 feet to a point having Coordinates of X = 2,321,250.00 and Y = 361,817.22; thence North 4,552.78 feet to the Southeast corner of State Lease No. 20628 having Coordinates of X = 2,321,250.00 and Y = 366,370.00; thence North 3,500.00 feet along the East boundary of said State Lease No. 20628 to its Northeast corner having Coordinates of X = 2,321,250.00 and Y = 369,870.00; thence continue North 2,583.37 feet to a point on the South boundary of said State Lease No. 20627 having Coordinates of X = 2,321,250.00 and Y = 372,453.37; thence

along the boundary of said State Lease No. 20627 the following courses: East 2,588.00 feet to a point having Coordinates of X = 2,323,838.00 and Y = 372,453.37 and North 3,356.63 feet to the point of beginning, (This lease includes only waterbottoms claimed and owned by the state and specifically excludes any School Indemnity land located within the above described tract), containing approximately **2,304 acres**, all as more particularly outlined on a plat on file in the Office of Mineral Resources, Department of Natural Resources. All bearings, distances and coordinates are based on Louisiana Coordinate System of 1927, (North or South Zone), where applicable.

NOTE: The above description of the Tract nominated for lease has been provided and corrected, where required, exclusively by the nomination party. Any mineral lease selected from this Tract and awarded by the Louisiana State Mineral and Energy Board shall be without warranty of any kind, either express, implied, or statutory, including, but not limited to, the implied warranties of merchantability and fitness for a particular purpose. Should the mineral lease awarded by the Louisiana State Mineral and Energy Board be subsequently modified, cancelled or abrogated due to the existence of conflicting leases, operating agreements, private claims or other future obligations or conditions which may affect all or any portion of the leased Tract, it shall not relieve the Lessee of the obligation to pay any bonus due thereon to the Louisiana State Mineral and Energy Board, nor shall the Louisiana State Mineral and Energy Board be obligated to refund any consideration paid by the Lessor prior to such modification, cancellation, or abrogation, including, but not limited to, bonuses, rentals and royalties.

NOTE: The State of Louisiana does hereby reserve, and this lease shall be subject to, the imprescriptible right of surface use in the nature of a servitude in favor of the Department of Natural Resources, including its Offices and Commissions, for the sole purpose of implementing, constructing, servicing and maintaining approved coastal zone management and/or restoration projects. Utilization of any and all rights derived under this lease by the mineral lessee, its agents, successors or assigns, shall not interfere with nor hinder the reasonable surface use by the Department of Natural Resources, its Offices or Commissions, as herein above reserved.

Applicant: TACOMA ENERGY CORPORATION

Bidder	Cash Payment	Price/ Acre	Rental	Oil	Gas	Other

12020010



Active_Leases

Counties

IMAGERY.DOQQ_2008_1M_CIF

ST CHARLES PARISH

LAKE SALVADOR

SL 19201

LAFOURCHE PARISH

T16S - R21E

SL 20626

SL 20643

SL 20645

P.O.B.

SL 20627

SL 20628



TRACT 42501 - Lafourche Parish, Louisiana

All of the lands now or formerly constituting the beds and bottoms of all water bodies of every nature and description as to which title is vested in the State of Louisiana, together with all islands arising therein and other lands formed by accretion or by reliction, where allowed by law, excepting tax adjudicated lands, and not presently under mineral lease on February 8, 2012, situated in Lafourche Parish, Louisiana, and more particularly described as follows: Beginning at a point having Coordinates of X = 2,328,560.00 and Y = 373,300.00; thence East 6,538.63 feet to a point on the West boundary of State Lease No. 19201 having Coordinates of X = 2,335,098.64 and Y = 373,300.00; thence along the boundary of said State Lease No. 19201 the following courses: South 40 degrees 57 minutes 13 second East 3,042.74 feet to a point having Coordinates of X = 2,337,093.00 and Y = 371,002.00, North 73 degrees 38 minutes 34 seconds East 898.36 feet to a point having Coordinates of X = 2,337,955.00 and Y = 371,255.00 and North 20 degrees 42 minutes 16 seconds West 2,186.19 feet to a point having Coordinates of X = 2,337,182.08 and Y = 373,300.00; thence East 952.92 feet to the Southwest corner of State Lease No. 19232 having Coordinates of X = 2,338,135.00 and Y = 373,300.00; thence East 216.00 feet on the South boundary of State Lease No. 19232 having Coordinates of X = 2,338,351.00 and Y = 373,300.00; thence South 11,482.78 feet to a point having Coordinates of X = 2,338,351.00 and Y = 361,817.22; thence West 9,791.00 feet to a point having Coordinates of X = 2,328,560.00 and Y = 361,817.22; thence North 11,482.78 feet to the point of beginning, containing approximately **2,498 acres**, all as more particularly outlined on a plat on file in the Office of Mineral Resources, Department of Natural Resources. All bearings, distances and coordinates are based on Louisiana Coordinate System of 1927, (North or South Zone), where applicable.

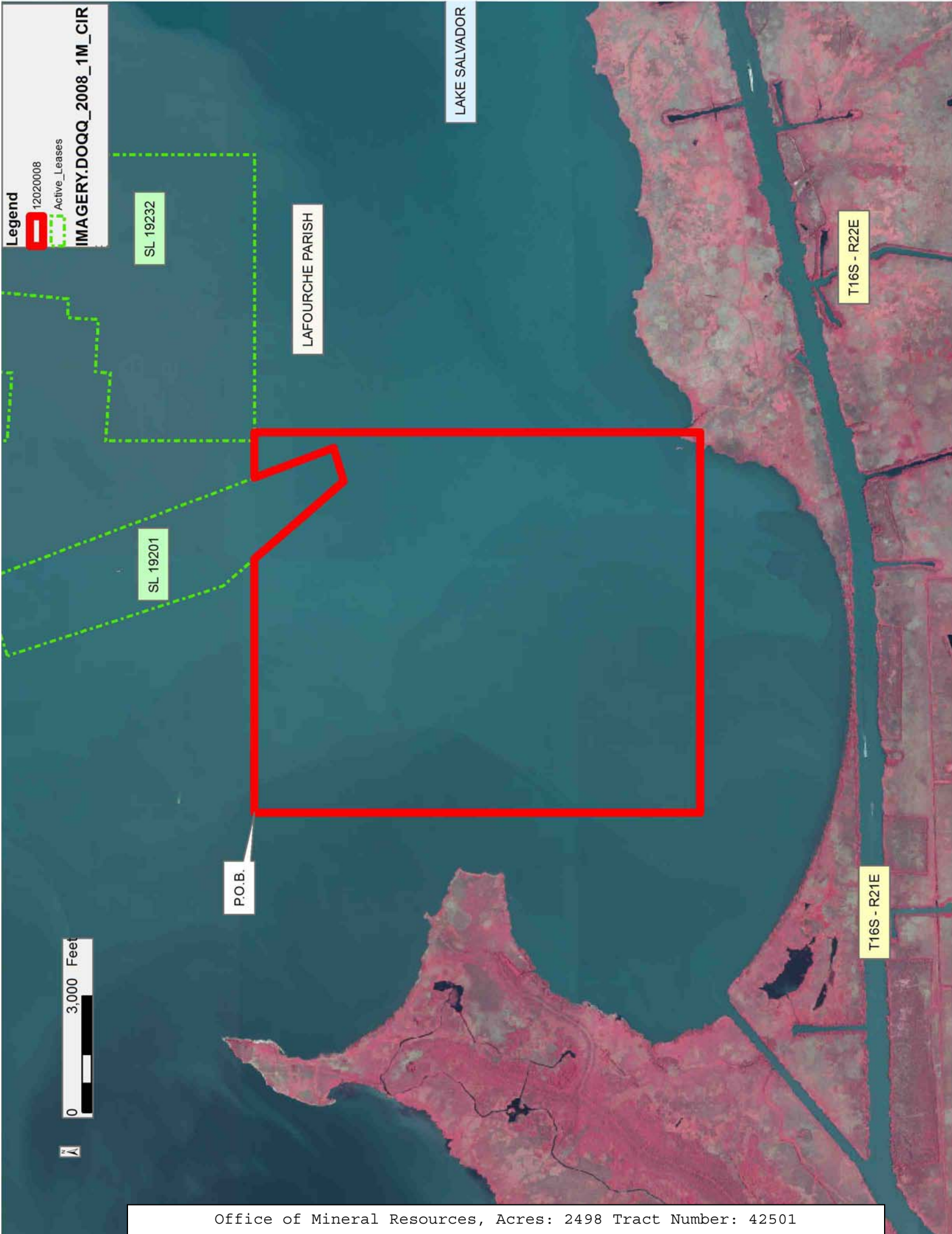
NOTE: The above description of the Tract nominated for lease has been provided and corrected, where required, exclusively by the nomination party. Any mineral lease selected from this Tract and awarded by the Louisiana State Mineral and Energy Board shall be without warranty of any kind, either express, implied, or statutory, including, but not limited to, the implied warranties of merchantability and fitness for a particular purpose. Should the mineral lease awarded by the Louisiana State Mineral and Energy Board be subsequently modified, cancelled or abrogated due to the existence of conflicting leases, operating agreements, private claims or other future obligations or conditions which may affect all or any portion of the leased Tract, it shall not relieve the Lessee of the obligation to pay any bonus due thereon to the Louisiana State Mineral and Energy Board, nor shall the Louisiana State Mineral and Energy Board be obligated to refund any consideration paid by the Lessor prior to such modification, cancellation, or abrogation, including, but not limited to, bonuses, rentals and royalties.

NOTE: The State of Louisiana does hereby reserve, and this lease shall be subject to, the imprescriptible right of surface use in the nature of a

servitude in favor of the Department of Natural Resources, including its Offices and Commissions, for the sole purpose of implementing, constructing, servicing and maintaining approved coastal zone management and/or restoration projects. Utilization of any and all rights derived under this lease by the mineral lessee, its agents, successors or assigns, shall not interfere with nor hinder the reasonable surface use by the Department of Natural Resources, its Offices or Commissions, as herein above reserved.

Applicant: TACOMA ENERGY CORPORATION

Bidder	Cash Payment	Price/ Acre	Rental	Oil	Gas	Other



TRACT 42502 - Lafourche Parish, Louisiana

All of the lands now or formerly constituting the beds and bottoms of all water bodies of every nature and description as to which title is vested in the State of Louisiana, together with all islands arising therein and other lands formed by accretion or by reliction, where allowed by law, excepting tax adjudicated lands, and not presently under mineral lease on February 8, 2012, situated in Lafourche Parish, Louisiana, and more particularly described as follows: Beginning at a point on the South boundary of State Lease No. 19232 having Coordinates of X = 2,338,351.00 and Y = 373,300.00; thence East 7,159.00 feet along the south boundary of said State Lease No. 19232 to its Southeast corner having Coordinates of X = 2,345,510.00 and Y = 373,300.00; thence continue East 4,407.62 feet to a point having Coordinates of X = 2,349,917.62 and Y = 373,300.00; thence South 11,482.78 feet to a point having Coordinates of X = 2,349,917.62 and Y = 361,817.22; thence West 11,566.62 feet to a point having Coordinates of X = 2,338,351.00 and Y = 361,817.22; thence North 11,482.78 feet to the point of beginning, containing approximately **2,498 acres**, all as more particularly outlined on a plat on file in the Office of Mineral Resources, Department of Natural Resources. All bearings, distances and coordinates are based on Louisiana Coordinate System of 1927, (North or South Zone), where applicable.

NOTE: The above description of the Tract nominated for lease has been provided and corrected, where required, exclusively by the nomination party. Any mineral lease selected from this Tract and awarded by the Louisiana State Mineral and Energy Board shall be without warranty of any kind, either express, implied, or statutory, including, but not limited to, the implied warranties of merchantability and fitness for a particular purpose. Should the mineral lease awarded by the Louisiana State Mineral and Energy Board be subsequently modified, cancelled or abrogated due to the existence of conflicting leases, operating agreements, private claims or other future obligations or conditions which may affect all or any portion of the leased Tract, it shall not relieve the Lessee of the obligation to pay any bonus due thereon to the Louisiana State Mineral and Energy Board, nor shall the Louisiana State Mineral and Energy Board be obligated to refund any consideration paid by the Lessor prior to such modification, cancellation, or abrogation, including, but not limited to, bonuses, rentals and royalties.

NOTE: The State of Louisiana does hereby reserve, and this lease shall be subject to, the imprescriptible right of surface use in the nature of a servitude in favor of the Department of Natural Resources, including its Offices and Commissions, for the sole purpose of implementing, constructing, servicing and maintaining approved coastal zone management and/or restoration projects. Utilization of any and all rights derived under this lease by the mineral lessee, its agents, successors or assigns, shall not interfere with nor hinder the reasonable surface use by the Department of Natural Resources, its Offices or Commissions, as herein above reserved.

Applicant: TACOMA ENERGY CORPORATION

Bidder	Cash Payment	Price/ Acre	Rental	Oil	Gas	Other

