

TRACT 42521 - Claiborne and Union Parishes, Louisiana

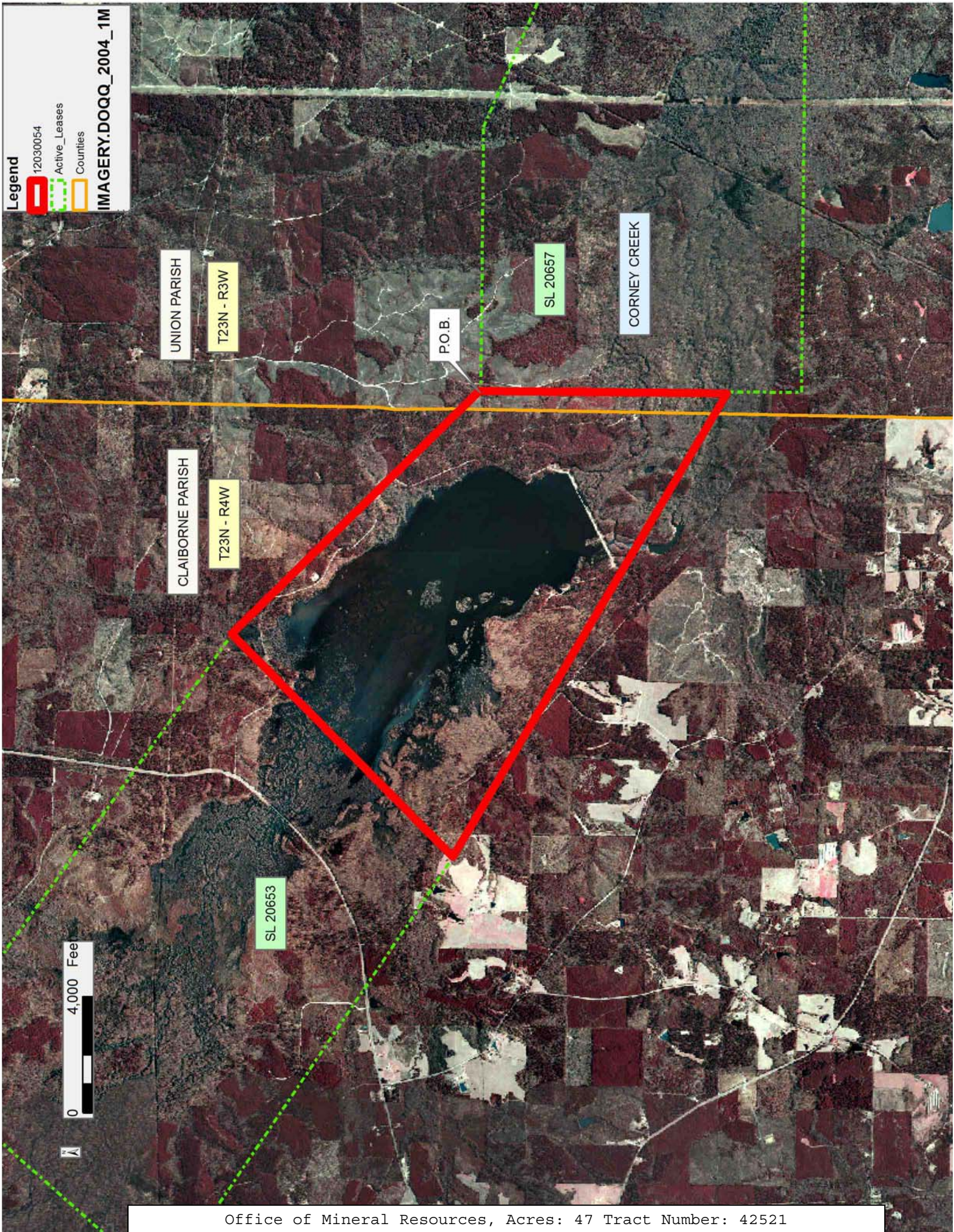
All of the lands now or formerly constituting the beds and bottoms of all water bodies of every nature and description as to which title is vested in the State of Louisiana, together with all islands arising therein and other lands formed by accretion or by reliction, where allowed by law, excepting tax adjudicated lands, and not presently under mineral lease on March 14, 2012, situated in Claiborne and Union Parishes, Louisiana, and more particularly described as follows: Beginning at a point being the Northwest corner of State Lease No. 20657 having Coordinates of X = 1,931,552.85 and Y = 817,619.40; thence South 8,498.45 feet along the Western boundary of said State Lease No. 20657 to a point having Coordinates of X = 1,931,552.85 and Y = 809,120.95; thence North 60 degrees 00 minutes 00 seconds West 18,480.00 feet to a point being the Southeast corner of State Lease No. 20653 having Coordinates of X = 1,915,548.70 and Y = 818,360.95; thence North 44 degrees 40 minutes 59 seconds East 10,776.40 feet along the Eastern boundary of said State Lease No. 20653 to a point being its Northeast corner having Coordinates of X = 1,923,126.52 and Y = 826,023.04; thence South 45 degrees 04 minutes 38 seconds East 11,900.60 feet to the point of beginning, containing approximately **47 acres**, all as more particularly outlined on a plat on file in the Office of Mineral Resources, Department of Natural Resources. All bearings, distances and coordinates are based on Louisiana Coordinate System of 1927, (North or South Zone), where applicable.

NOTE: The above description of the Tract nominated for lease has been provided and corrected, where required, exclusively by the nomination party. Any mineral lease selected from this Tract and awarded by the Louisiana State Mineral and Energy Board shall be without warranty of any kind, either express, implied, or statutory, including, but not limited to, the implied warranties of merchantability and fitness for a particular purpose. Should the mineral lease awarded by the Louisiana State Mineral and Energy Board be subsequently modified, cancelled or abrogated due to the existence of conflicting leases, operating agreements, private claims or other future obligations or conditions which may affect all or any portion of the leased Tract, it shall not relieve the Lessee of the obligation to pay any bonus due thereon to the Louisiana State Mineral and Energy Board, nor shall the Louisiana State Mineral and Energy Board be obligated to refund any consideration paid by the Lessor prior to such modification, cancellation, or abrogation, including, but not limited to, bonuses, rentals and royalties.

NOTE: The above Tract is located upon a restricted scenic river and all operations in this area must be conducted in strict conformity with the regulations of the Corps of Engineers, U.S. Army.

Bidder	Cash Payment	Price/ Acre	Rental	Oil	Gas	Other

Applicant: THEOPHILUS OIL, GAS & LAND SERVICES, LLC



TRACT 42522 - Union Parish, Louisiana

All of the lands now or formerly constituting the beds and bottoms of all water bodies of every nature and description as to which title is vested in the State of Louisiana, together with all islands arising therein and other lands formed by accretion or by reliction, where allowed by law, excepting tax adjudicated lands, and not presently under mineral lease on March 14, 2012, situated in Union Parish, Louisiana, and more particularly described as follows: Beginning at a point being a Northeast corner of State Lease No. 20656 having Coordinates of X = 1,962,646.17 and Y = 816,702.03; thence South 29 degrees 07 minutes 24 seconds East 9,297.97 feet to a point on the Northern boundary of State Lease No. 20658 having Coordinates of X = 1,967,171.41 and Y = 808,579.56; thence South 65 degrees 00 minutes 15 seconds West 6,607.80 feet along the Northern boundary of said State Lease No. 20658 to a point having Coordinates of X = 1,961,182.50 and Y = 805,787.43; thence North 89 degrees 19 minutes 05 seconds West 11,172.04 feet to a point having Coordinates of X = 1,950,011.25 and Y = 805,920.42; thence North 00 degrees 09 minutes 03 seconds East 700.48 feet to a point being the Southeast corner of State Lease No. 20657 having Coordinates of X = 1,950,013.09 and Y = 806,620.89; thence North 00 degrees 09 minutes 03 seconds East 6,997.57 feet along the Eastern boundary of said State Lease No. 20657 to its Northeast corner having Coordinates of X = 1,950,031.52 and Y = 813,618.44; thence North 00 degrees 09 minutes 04 seconds East 4,247.06 feet to a point being the Southwest corner of said State Lease No. 20654 having Coordinates of X = 1,950,042.72 and Y = 817,865.48; thence South 89 degrees 35 minutes 18 seconds East 7,464.51 feet along the Southern boundary of said State Lease No. 20654 to a point being the Northwest corner of said State Lease No. 20656 having Coordinates of X = 1,957,507.04 and Y = 817,811.83; thence along the boundary of said State Lease No. 20656 the following: South 3,863.74 feet to a point having Coordinates of X = 1,957,507.04 and Y = 813,948.09; East 5,139.13 feet to a point having Coordinates of X = 1,962,646.17 and Y = 813,948.09; North 2,753.94 feet to the point of beginning, (This lease includes only waterbottoms claimed and owned by the state and specifically excludes any land which the state may claim or own and to which the mineral rights are vested in the state), containing approximately **42 acres**, all as more particularly outlined on a plat on file in the Office of Mineral Resources, Department of Natural Resources. All bearings, distances and coordinates are based on Louisiana Coordinate System of 1927, (North or South Zone), where applicable.

NOTE: The above description of the Tract nominated for lease has been provided and corrected, where required, exclusively by the nomination party. Any mineral lease selected from this Tract and awarded by the Louisiana State Mineral and Energy Board shall be without warranty of any kind, either express, implied, or statutory, including, but not limited to, the implied warranties of merchantability and fitness for a particular purpose. Should the mineral lease awarded by the Louisiana State Mineral and Energy Board be subsequently modified, cancelled or abrogated due to the existence of conflicting leases, operating agreements, private claims

or other future obligations or conditions which may affect all or any portion of the leased Tract, it shall not relieve the Lessee of the obligation to pay any bonus due thereon to the Louisiana State Mineral and Energy Board, nor shall the Louisiana State Mineral and Energy Board be obligated to refund any consideration paid by the Lessor prior to such modification, cancellation, or abrogation, including, but not limited to, bonuses, rentals and royalties.

NOTE: The above Tract is located upon a restricted scenic river and all operations in this area must be conducted in strict conformity with the regulations of the Corps of Engineers, U.S. Army.

Applicant: THEOPHILUS OIL, GAS & LAND SERVICES, LLC

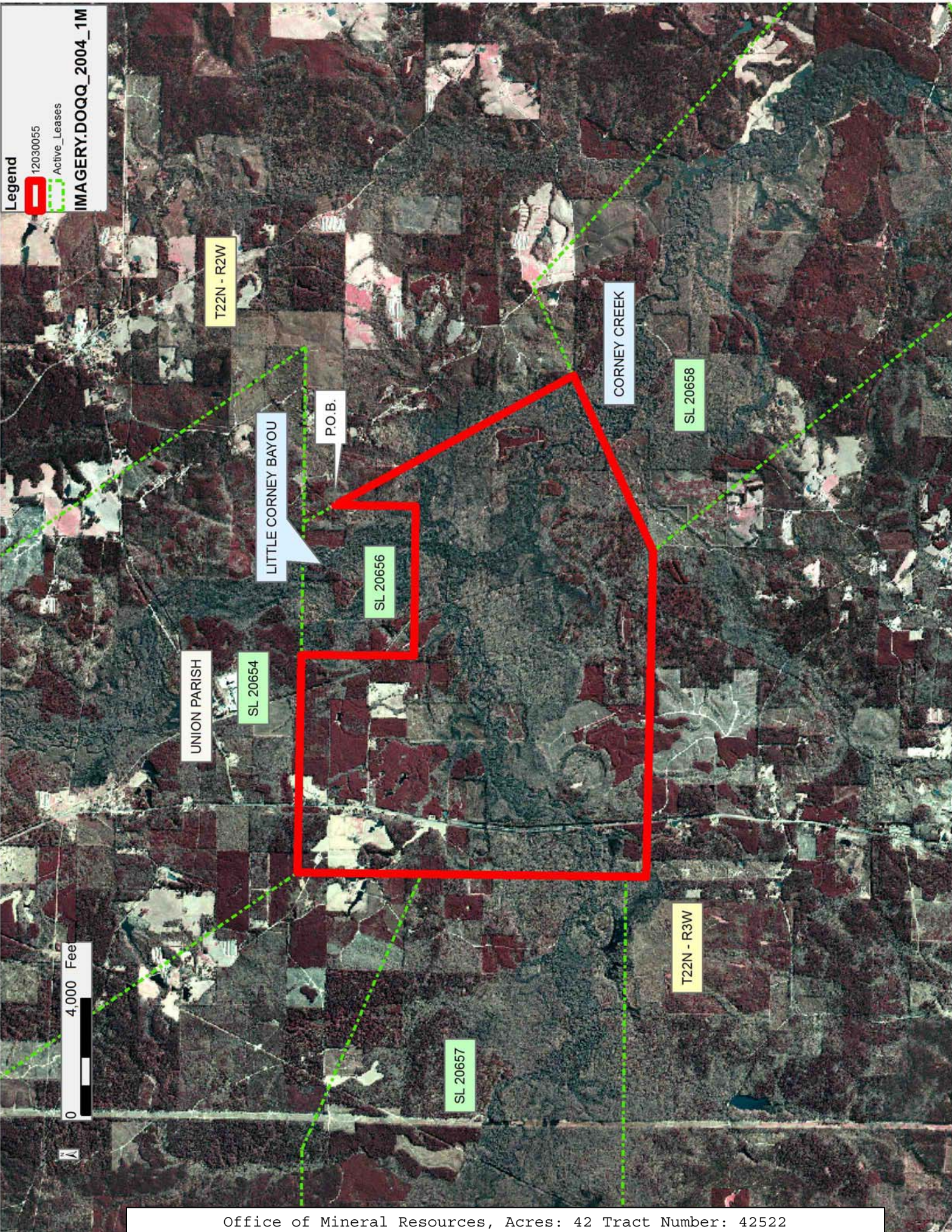
Bidder	Cash Payment	Price/ Acre	Rental	Oil	Gas	Other

Legend

12030055

Active Leases

IMAGERY.DOQQ_2004_1M



TRACT 42523 - East Carroll Parish, Louisiana

All of the lands now or formerly constituting the beds and bottoms of all water bodies of every nature and description as to which title is vested in the State of Louisiana, together with all islands arising therein and other lands formed by accretion or by reliction, where allowed by law, excepting tax adjudicated lands, and not presently under mineral lease on March 14, 2012, situated in East Carroll Parish, Louisiana, and more particularly described as follows: Beginning at a point having Coordinates of X = 2,404,680.00 and Y = 771,660.00; thence East 9,000.00 feet to a point having Coordinates of X = 2,413,680.00 and Y = 771,660.00; thence South 13,710.00 feet to a point having Coordinates of X = 2,413,680.00 and Y = 757,950.00; thence West 9,000.00 feet to a point having Coordinates of X = 2,404,680.00 and Y = 757,950.00; thence North 13,710.00 feet to the point of beginning, and **LESS AND EXCEPT** that portion, if any, of the above described tract that may lie within the State of Mississippi, containing approximately **58 acres**, all as more particularly outlined on a plat on file in the Office of Mineral Resources, Department of Natural Resources. All bearings, distances and coordinates are based on Louisiana Coordinate System of 1927, (North or South Zone), where applicable.

NOTE: The above description of the Tract nominated for lease has been provided and corrected, where required, exclusively by the nomination party. Any mineral lease selected from this Tract and awarded by the Louisiana State Mineral and Energy Board shall be without warranty of any kind, either express, implied, or statutory, including, but not limited to, the implied warranties of merchantability and fitness for a particular purpose. Should the mineral lease awarded by the Louisiana State Mineral and Energy Board be subsequently modified, cancelled or abrogated due to the existence of conflicting leases, operating agreements, private claims or other future obligations or conditions which may affect all or any portion of the leased Tract, it shall not relieve the Lessee of the obligation to pay any bonus due thereon to the Louisiana State Mineral and Energy Board, nor shall the Louisiana State Mineral and Energy Board be obligated to refund any consideration paid by the Lessor prior to such modification, cancellation, or abrogation, including, but not limited to, bonuses, rentals and royalties.

NOTE: The Office of Mineral Resources will require a minimum bonus of \$155 per acre and a minimum royalty of 20%.

Applicant: STAFF OFFICE OF MINERAL RESOURCES

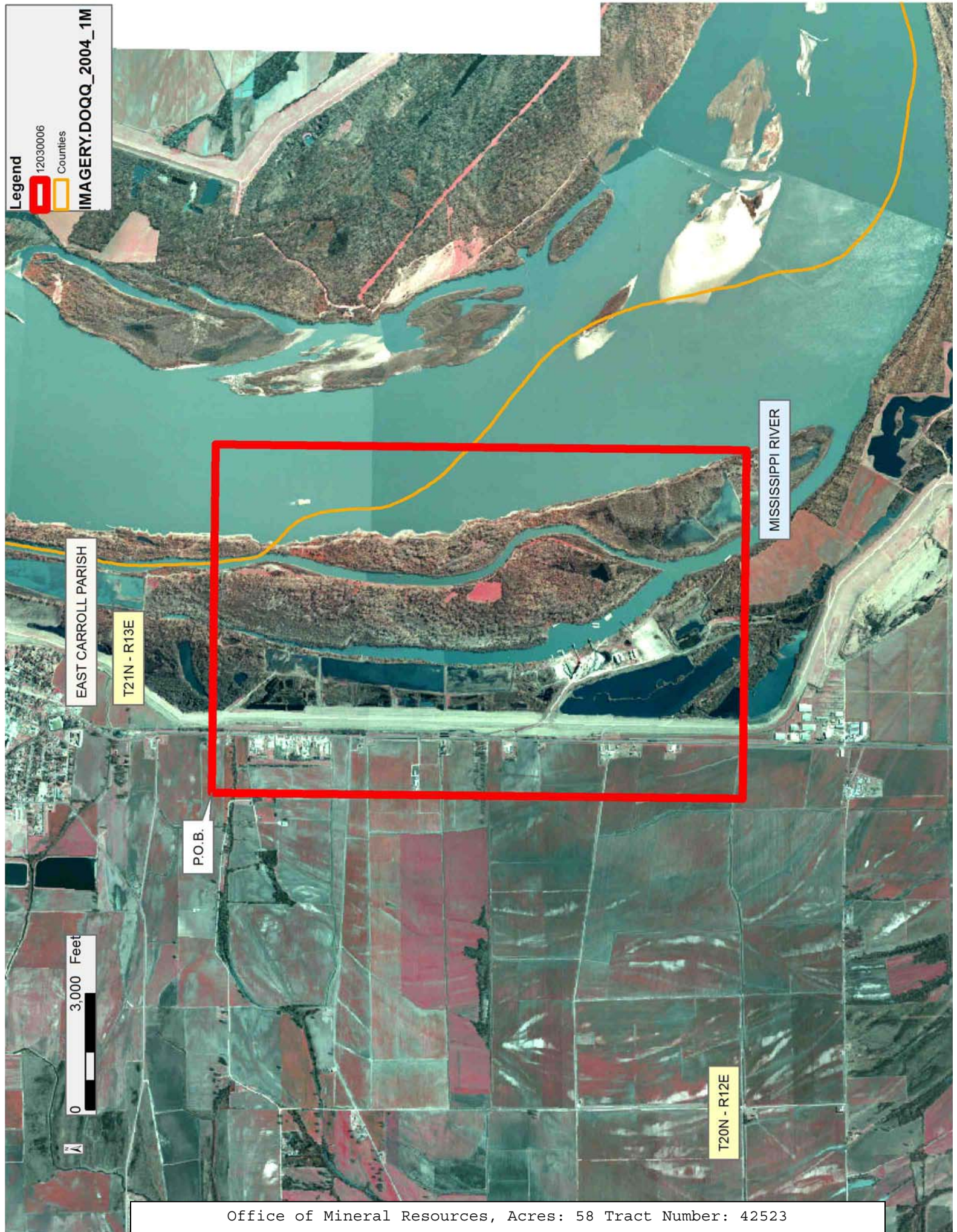
Bidder	Cash Payment	Price/ Acre	Rental	Oil	Gas	Other

Legend

12030006

Counties

IMAGERY.DOQQ_2004_1M



TRACT 42524 - Union Parish, Louisiana

All of the lands now or formerly constituting the beds and bottoms of all water bodies of every nature and description as to which title is vested in the State of Louisiana, together with all islands arising therein and other lands formed by accretion or by reliction, where allowed by law, excepting tax adjudicated lands, and not presently under mineral lease on March 14, 2012, situated in Union Parish, Louisiana, and more particularly described as follows: Beginning at a point being the Southeast corner of State Lease No. 20665 having Coordinates of X = 2,097,866.20 and Y = 759,328.50; thence South 40 degrees 00 minutes 00 seconds East 18,480.00 feet to a point having Coordinates of X = 2,109,744.91 and Y = 745,172.00; thence West 18,480.00 feet to a point having Coordinates of X = 2,091,264.91 and Y = 745,172.00; thence North 40 degrees 00 minutes 00 seconds West 18,480.00 feet to a point being the Southwest corner of said State Lease No. 20665 having Coordinates of X = 2,079,386.20 and Y = 759,328.50; thence East 18,480.00 feet along the Southern boundary of said State Lease No. 20665 to the point of beginning, **LESS AND EXCEPT** any right, title, and interest in lands owned by and not under lease from the State of Louisiana, on behalf of the Union Parish School Board, situated in Section 16, Township 20 North, Range 3 East, Union Parish, Louisiana, contained within the above described tract, containing approximately **72 acres**, all as more particularly outlined on a plat on file in the Office of Mineral Resources, Department of Natural Resources. All bearings, distances and coordinates are based on Louisiana Coordinate System of 1927, (North or South Zone), where applicable.

NOTE: The above description of the Tract nominated for lease has been provided and corrected, where required, exclusively by the nomination party. Any mineral lease selected from this Tract and awarded by the Louisiana State Mineral and Energy Board shall be without warranty of any kind, either express, implied, or statutory, including, but not limited to, the implied warranties of merchantability and fitness for a particular purpose. Should the mineral lease awarded by the Louisiana State Mineral and Energy Board be subsequently modified, cancelled or abrogated due to the existence of conflicting leases, operating agreements, private claims or other future obligations or conditions which may affect all or any portion of the leased Tract, it shall not relieve the Lessee of the obligation to pay any bonus due thereon to the Louisiana State Mineral and Energy Board, nor shall the Louisiana State Mineral and Energy Board be obligated to refund any consideration paid by the Lessor prior to such modification, cancellation, or abrogation, including, but not limited to, bonuses, rentals and royalties.

NOTE: The above Tract is located upon a restricted scenic river and all operations in this area must be conducted in strict conformity with the regulations of the Corps of Engineers, U.S. Army.

Applicant: THEOPHILUS OIL, GAS & LAND SERVICES, LLC

Bidder	Cash Payment	Price/ Acre	Rental	Oil	Gas	Other

UNION PARISH

T21N - R3E

SL 20665

T21N - R2E

P.O.B.

T20N - R3E

BAYOU DE LOUTRE

T20N - R2E

0 4,000 Feet

TRACT 42525 - East Carroll Parish, Louisiana

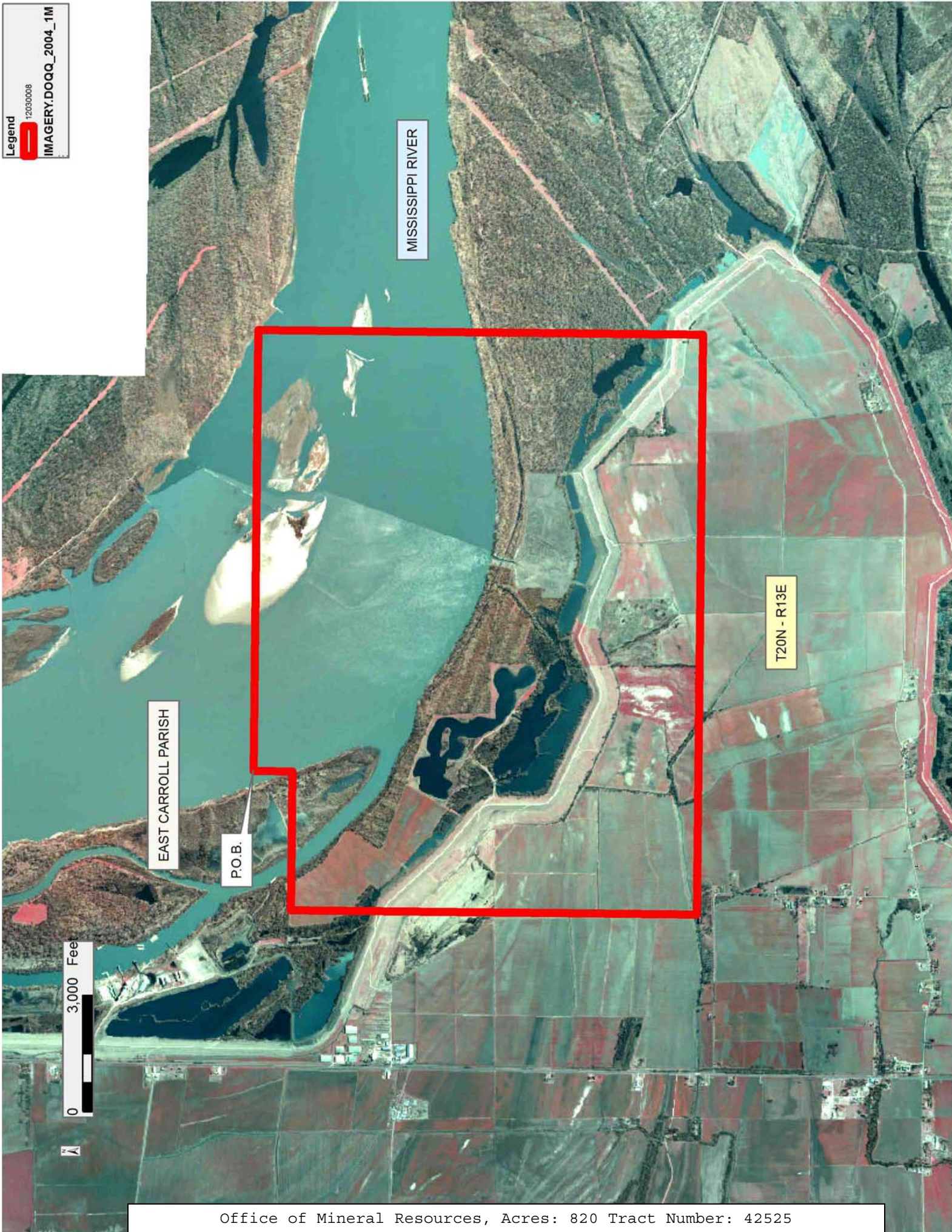
All of the lands now or formerly constituting the beds and bottoms of all water bodies of every nature and description as to which title is vested in the State of Louisiana, together with all islands arising therein and other lands formed by accretion or by reliction, where allowed by law, excepting tax adjudicated lands, and not presently under mineral lease on March 14, 2012, situated in East Carroll Parish, Louisiana, and more particularly described as follows: Beginning at a point having Coordinates of X = 2,413,680.00 and Y = 758,950.00; thence East 11,360.00 feet to a point having Coordinates of X = 2,425,040.00 and Y = 758,950.00; thence South 11,450.00 feet to a point having Coordinates of X = 2,425,040.00 and Y = 747,500.00; thence West 14,935.00 feet to a point having Coordinates of X = 2,410,105.00 and Y = 747,500.00; thence North 10,450.00 feet to a point having Coordinates of X = 2,410,105.00 and Y = 757,950.00; thence East 3,575.00 feet to a point having Coordinates of X = 2,413,680.00 and Y = 757,950.00; thence North 1,000.00 feet to the point of beginning, and **LESS AND EXCEPT** that portion, if any, of the above described tract that may lie within the State of Mississippi, containing approximately **820 acres**, all as more particularly outlined on a plat on file in the Office of Mineral Resources, Department of Natural Resources. All bearings, distances and coordinates are based on Louisiana Coordinate System of 1927, (North or South Zone), where applicable.

NOTE: The above description of the Tract nominated for lease has been provided and corrected, where required, exclusively by the nomination party. Any mineral lease selected from this Tract and awarded by the Louisiana State Mineral and Energy Board shall be without warranty of any kind, either express, implied, or statutory, including, but not limited to, the implied warranties of merchantability and fitness for a particular purpose. Should the mineral lease awarded by the Louisiana State Mineral and Energy Board be subsequently modified, cancelled or abrogated due to the existence of conflicting leases, operating agreements, private claims or other future obligations or conditions which may affect all or any portion of the leased Tract, it shall not relieve the Lessee of the obligation to pay any bonus due thereon to the Louisiana State Mineral and Energy Board, nor shall the Louisiana State Mineral and Energy Board be obligated to refund any consideration paid by the Lessor prior to such modification, cancellation, or abrogation, including, but not limited to, bonuses, rentals and royalties.

NOTE: The Office of Mineral Resources will require a minimum bonus of \$155 per acre and a minimum royalty of 20%.

Applicant: STAFF OFFICE OF MINERAL RESOURCES

Bidder	Cash Payment	Price/ Acre	Rental	Oil	Gas	Other



TRACT 42526 - East Carroll Parish, Louisiana

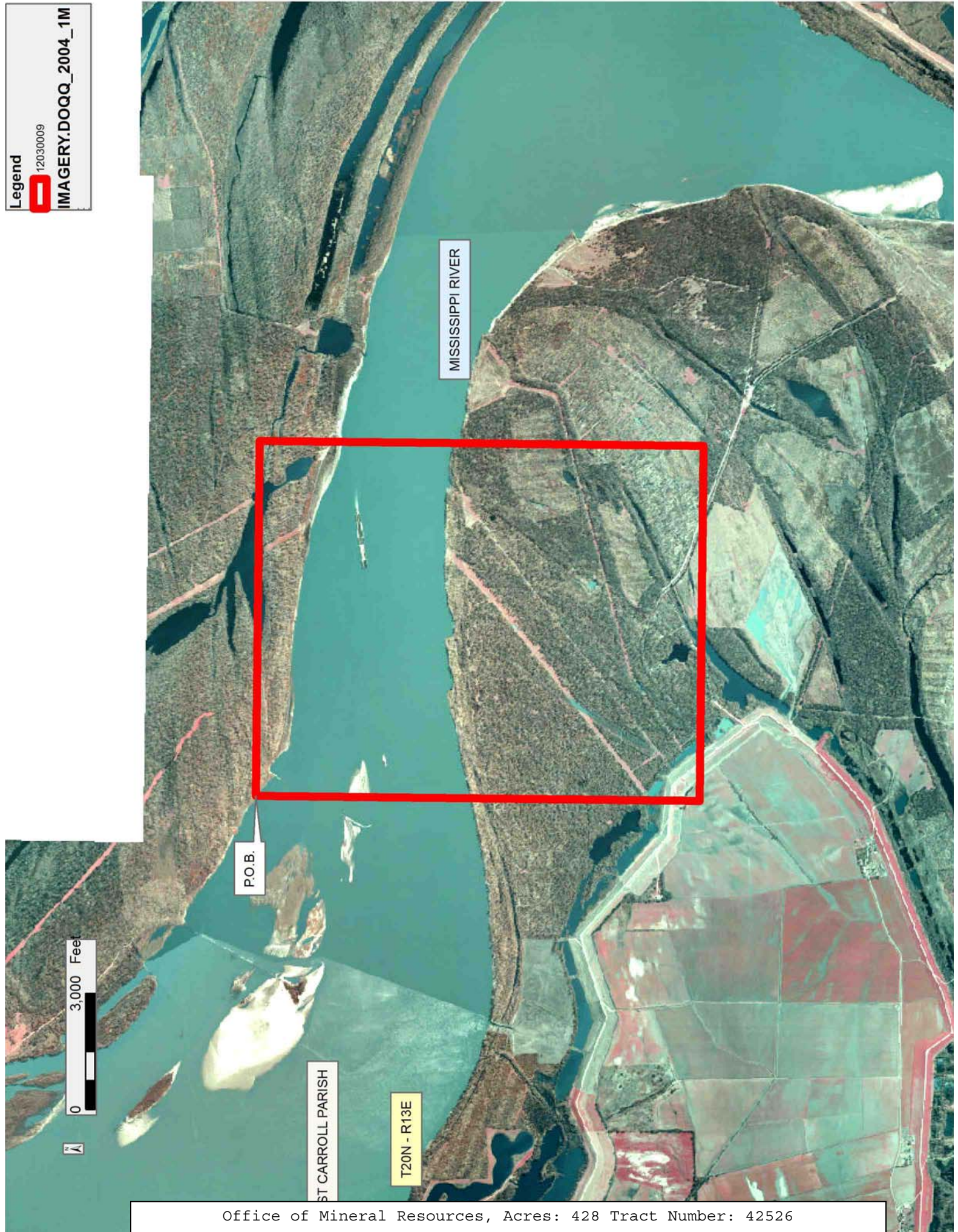
All of the lands now or formerly constituting the beds and bottoms of all water bodies of every nature and description as to which title is vested in the State of Louisiana, together with all islands arising therein and other lands formed by accretion or by reliction, where allowed by law, excepting tax adjudicated lands, and not presently under mineral lease on March 14, 2012, situated in East Carroll Parish, Louisiana, and more particularly described as follows: Beginning at a point having Coordinates of X = 2,425,040.00 and Y = 758,950.00; thence East 9,160.00 feet to a point having Coordinates of X = 2,434,200.00 and Y = 758,950.00; thence South 11,450.00 feet to a point having Coordinates of X = 2,434,200.00 and Y = 747,500.00; thence West 9,160.00 feet to a point having Coordinates of X = 2,425,040.00 and Y = 747,500.00; thence North 11,450.00 feet to the point of beginning, and **LESS AND EXCEPT** that portion, if any, of the above described tract that may lie within the State of Mississippi, containing approximately **428 acres**, all as more particularly outlined on a plat on file in the Office of Mineral Resources, Department of Natural Resources. All bearings, distances and coordinates are based on Louisiana Coordinate System of 1927, (North or South Zone), where applicable.

NOTE: The above description of the Tract nominated for lease has been provided and corrected, where required, exclusively by the nomination party. Any mineral lease selected from this Tract and awarded by the Louisiana State Mineral and Energy Board shall be without warranty of any kind, either express, implied, or statutory, including, but not limited to, the implied warranties of merchantability and fitness for a particular purpose. Should the mineral lease awarded by the Louisiana State Mineral and Energy Board be subsequently modified, cancelled or abrogated due to the existence of conflicting leases, operating agreements, private claims or other future obligations or conditions which may affect all or any portion of the leased Tract, it shall not relieve the Lessee of the obligation to pay any bonus due thereon to the Louisiana State Mineral and Energy Board, nor shall the Louisiana State Mineral and Energy Board be obligated to refund any consideration paid by the Lessor prior to such modification, cancellation, or abrogation, including, but not limited to, bonuses, rentals and royalties.

NOTE: The Office of Mineral Resources will require a minimum bonus of \$155 per acre and a minimum royalty of 20%.

Applicant: STAFF OFFICE OF MINERAL RESOURCES

Bidder	Cash Payment	Price/ Acre	Rental	Oil	Gas	Other



TRACT 42527 - East Carroll Parish, Louisiana

All of the lands now or formerly constituting the beds and bottoms of all water bodies of every nature and description as to which title is vested in the State of Louisiana, together with all islands arising therein and other lands formed by accretion or by reliction, where allowed by law, excepting tax adjudicated lands, and not presently under mineral lease on March 14, 2012, situated in East Carroll Parish, Louisiana, and more particularly described as follows: Beginning at a point having Coordinates of X = 2,434,200.00 and Y = 758,950.00; thence East 8,105.85 feet to a point having Coordinates of X = 2,442,305.85 and Y = 758,950.00; thence South approximately 4,880 feet to a point of intersection with the Northeastern boundary of State Lease No. 20444, said to be a point on the navigation channel of the Mississippi River, having a Coordinate of X = 2,442,305.85; thence along the boundaries of said State Lease No. 20444 as follows: Northwesterly along the meanders of said navigation channel to the point of intersection with a line having a bearing of North 50 degrees 51 minutes 55 seconds East extended from a point having Coordinates of X = 2,438,029.36 and Y = 753,147.81; South 50 degrees 51 minutes 55 seconds West approximately 2,168 feet along said line to said point having Coordinates of X = 2,438,029.36 and Y = 753,147.81; South 65 degrees 52 minutes 21 seconds East 1,529.91 feet to a point having Coordinates of X = 2,439,425.61 and Y = 752,522.43; South 64 degrees 20 minutes 31 seconds East 1,786.63 feet to a point having Coordinates of X = 2,441,036.07 and Y = 751,748.82; South 50 degrees 05 minutes 14 seconds East 1,736.22 feet to a point having Coordinates of X = 2,442,367.80 and Y = 750,634.83; South 41 degrees 43 minutes 21 seconds East 702.66 feet to a point having Coordinates of X = 2,442,835.43 and Y = 750,110.38; South 39 degrees 44 minutes 15 seconds East 895.68 feet to a point having Coordinates of X = 2,443,408.01 and Y = 749,421.62; South 19 degrees 13 minutes 40 seconds East 802.29 feet to a point having Coordinates of X = 2,443,672.23 and Y = 748,664.08 and North 78 degrees 05 minutes 34 seconds East approximately 1,966 feet to its Southeast corner, said to be a point on said navigation channel; thence Southerly approximately 3,100 feet to a point having Coordinates of X = 2,445,595.77 and Y = 745,970.00; thence West 11,395.77 feet to a point having Coordinates of X = 2,434,200.00 and Y = 745,970.00; thence North 12,980.00 feet to the point of beginning, **LESS AND EXCEPT**, that portion, if any, of said State Lease No. 20444 which may lie within the above described tract, and **LESS AND EXCEPT** that portion, if any, of the above described tract that may lie within the State of Mississippi, containing approximately **600 acres**, all as more particularly outlined on a plat on file in the Office of Mineral Resources, Department of Natural Resources. All bearings, distances and coordinates are based on Louisiana Coordinate System of 1927, (North or South Zone), where applicable.

NOTE: The above description of the Tract nominated for lease has been provided and corrected, where required, exclusively by the nomination party. Any mineral lease selected from this Tract and awarded by the Louisiana State Mineral and Energy Board shall be without warranty of any kind, either express, implied, or statutory, including, but not limited

to, the implied warranties of merchantability and fitness for a particular purpose. Should the mineral lease awarded by the Louisiana State Mineral and Energy Board be subsequently modified, cancelled or abrogated due to the existence of conflicting leases, operating agreements, private claims or other future obligations or conditions which may affect all or any portion of the leased Tract, it shall not relieve the Lessee of the obligation to pay any bonus due thereon to the Louisiana State Mineral and Energy Board, nor shall the Louisiana State Mineral and Energy Board be obligated to refund any consideration paid by the Lessor prior to such modification, cancellation, or abrogation, including, but not limited to, bonuses, rentals and royalties.

NOTE: The Office of Mineral Resources will require a minimum bonus of \$155 per acre and a minimum royalty of 20%.

Applicant: STAFF OFFICE OF MINERAL RESOURCES

Bidder	Cash Payment	Price/ Acre	Rental	Oil	Gas	Other

Legend

12030007

Active_Leases

IMAGERY.DOQQ_2004_1M

A north arrow pointing upwards and a scale bar labeled "0" and "3,000 Feet".

An aerial photograph showing a large body of water, likely a reservoir or lake. A red boundary outlines a specific area within the water. A green dashed line runs along the shoreline of this area. Several labels are present: "SL 20444" in a yellow box near the green dashed line; "T20N - R13E" in a yellow box in the lower left; "EAST CARROLL PARISH" in a white box in the lower center; "T10N - R9W" in a yellow box on the right; and "P.O.B." in a white box near the bottom left corner of the red boundary.

Office of Mineral Resources, Acres: 600 Tract Number: 42527

TRACT 42528 - East Carroll and West Carroll Parishes, Louisiana

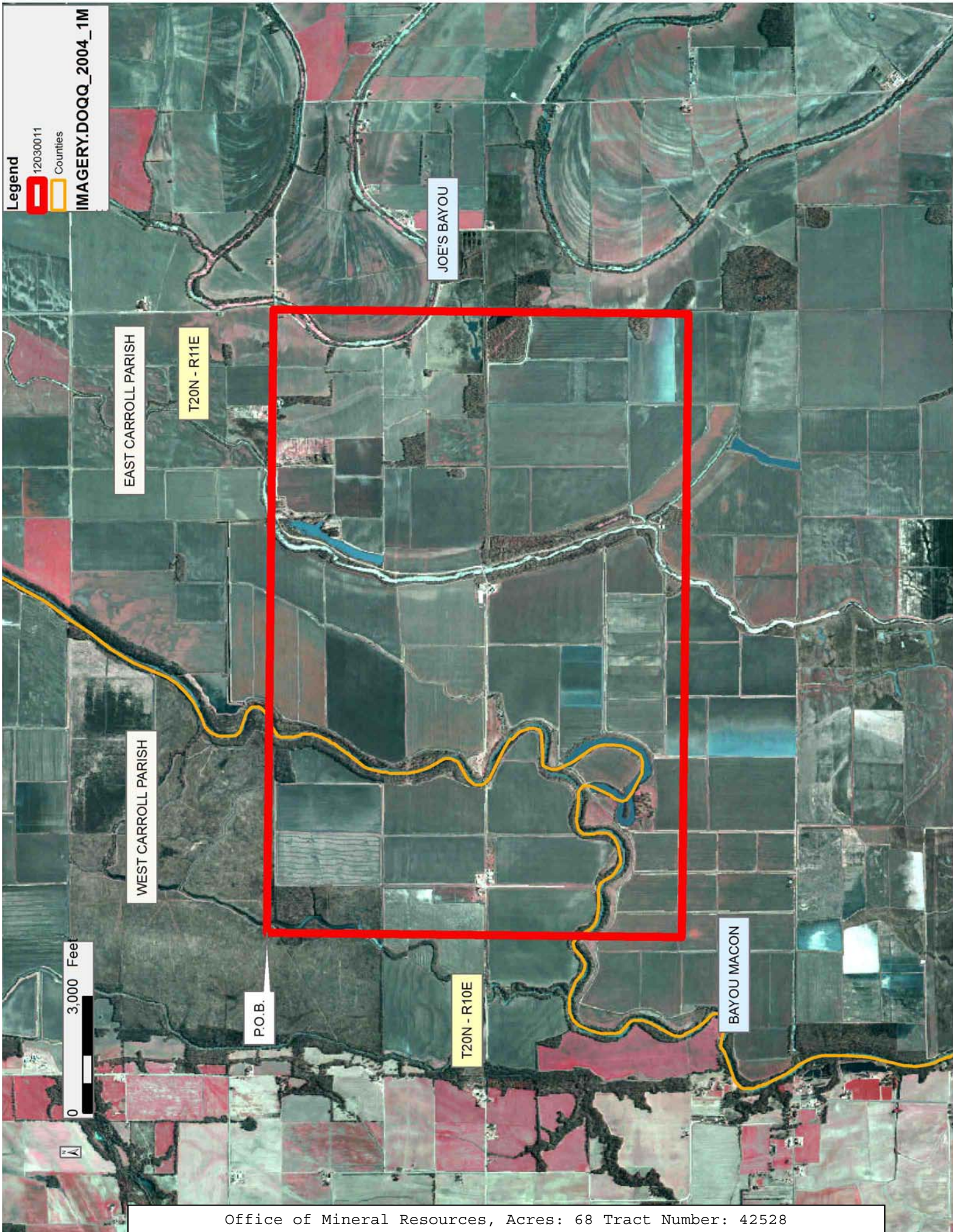
All of the lands now or formerly constituting the beds and bottoms of all water bodies of every nature and description as to which title is vested in the State of Louisiana, together with all islands arising therein and other lands formed by accretion or by reliction, where allowed by law, excepting tax adjudicated lands, and not presently under mineral lease on March 14, 2012, situated in East Carroll and West Carroll Parishes, Louisiana, and more particularly described as follows: Beginning at a point having Coordinates of X = 2,341,295.00 and Y = 746,810.00; thence East 16,055.00 feet to a point having Coordinates of X = 2,357,350.00 and Y = 746,810.00; thence South 10,685.00 feet to a point having Coordinates of X = 2,357,350.00 and Y = 736,125.00; thence West 16,055.00 feet to a point having Coordinates of X = 2,341,295.00 and Y = 736,125.00; thence North 10,685.00 feet to the point of beginning, containing approximately **68 acres**, all as more particularly outlined on a plat on file in the Office of Mineral Resources, Department of Natural Resources. All bearings, distances and coordinates are based on Louisiana Coordinate System of 1927, (North or South Zone), where applicable.

NOTE: The above description of the Tract nominated for lease has been provided and corrected, where required, exclusively by the nomination party. Any mineral lease selected from this Tract and awarded by the Louisiana State Mineral and Energy Board shall be without warranty of any kind, either express, implied, or statutory, including, but not limited to, the implied warranties of merchantability and fitness for a particular purpose. Should the mineral lease awarded by the Louisiana State Mineral and Energy Board be subsequently modified, cancelled or abrogated due to the existence of conflicting leases, operating agreements, private claims or other future obligations or conditions which may affect all or any portion of the leased Tract, it shall not relieve the Lessee of the obligation to pay any bonus due thereon to the Louisiana State Mineral and Energy Board, nor shall the Louisiana State Mineral and Energy Board be obligated to refund any consideration paid by the Lessor prior to such modification, cancellation, or abrogation, including, but not limited to, bonuses, rentals and royalties.

NOTE: The Office of Mineral Resources will require a minimum bonus of \$155 per acre and a minimum royalty of 20%.

Applicant: STAFF OFFICE OF MINERAL RESOURCES

Bidder	Cash Payment	Price/ Acre	Rental	Oil	Gas	Other



TRACT 42529 - East Carroll Parish, Louisiana

All of the lands now or formerly constituting the beds and bottoms of all water bodies of every nature and description as to which title is vested in the State of Louisiana, together with all islands arising therein and other lands formed by accretion or by reliction, where allowed by law, excepting tax adjudicated lands, and not presently under mineral lease on March 14, 2012, situated in East Carroll Parish, Louisiana, and more particularly described as follows: Beginning at a point having Coordinates of X = 2,357,350.00 and Y = 746,810.00; thence East 10,630.00 feet to a point having Coordinates of X = 2,367,980.00 and Y = 746,810.00; thence South 10,685.00 feet to a point having Coordinates of X = 2,367,980.00 and Y = 736,125.00; thence West 10,630.00 feet to a point having Coordinates of X = 2,357,350.00 and Y = 736,125.00; thence North 10,685.00 feet to the point of beginning, containing approximately **58 acres**, all as more particularly outlined on a plat on file in the Office of Mineral Resources, Department of Natural Resources. All bearings, distances and coordinates are based on Louisiana Coordinate System of 1927, (North or South Zone), where applicable.

NOTE: The above description of the Tract nominated for lease has been provided and corrected, where required, exclusively by the nomination party. Any mineral lease selected from this Tract and awarded by the Louisiana State Mineral and Energy Board shall be without warranty of any kind, either express, implied, or statutory, including, but not limited to, the implied warranties of merchantability and fitness for a particular purpose. Should the mineral lease awarded by the Louisiana State Mineral and Energy Board be subsequently modified, cancelled or abrogated due to the existence of conflicting leases, operating agreements, private claims or other future obligations or conditions which may affect all or any portion of the leased Tract, it shall not relieve the Lessee of the obligation to pay any bonus due thereon to the Louisiana State Mineral and Energy Board, nor shall the Louisiana State Mineral and Energy Board be obligated to refund any consideration paid by the Lessor prior to such modification, cancellation, or abrogation, including, but not limited to, bonuses, rentals and royalties.

NOTE: The Office of Mineral Resources will require a minimum bonus of \$155 per acre and a minimum royalty of 20%.

Applicant: STAFF OFFICE OF MINERAL RESOURCES

Bidder	Cash Payment	Price/ Acre	Rental	Oil	Gas	Other

EAST CARROLL PARISH

T20N - R11E

JOE'S BAYOU

P.O.B.

0 4,000 Feet



TRACT 42530 - East Carroll Parish, Louisiana

All of the lands now or formerly constituting the beds and bottoms of all water bodies of every nature and description as to which title is vested in the State of Louisiana, together with all islands arising therein and other lands formed by accretion or by reliction, where allowed by law, excepting tax adjudicated lands, and not presently under mineral lease on March 14, 2012, situated in East Carroll Parish, Louisiana, and more particularly described as follows: Beginning at a point having Coordinates of X = 2,373,100.00 and Y = 747,300.00; thence East 5,975.00 feet to a point having Coordinates of X = 2,379,075.00 and Y = 747,300.00; thence South 16,810.00 feet to a point having Coordinates of X = 2,379,075.00 and Y = 730,490.00; thence West 11,095.00 feet to a point having Coordinates of X = 2,367,980.00 and Y = 730,490.00; thence North 16,320.00 feet a point having Coordinates of X = 2,367,980.00 and Y = 746,810.00; thence East 5,120.00 feet to a point having Coordinates of X = 2,373,100.00 and Y = 746,810.00; thence North 490.00 feet to the point of beginning, (This tract includes only waterbottoms claimed and owned by the state and specifically excludes any land which the state may claim or own and to which the mineral rights are vested in the state), containing approximately **40 acres**, all as more particularly outlined on a plat on file in the Office of Mineral Resources, Department of Natural Resources. All bearings, distances and coordinates are based on Louisiana Coordinate System of 1927, (North or South Zone), where applicable.

NOTE: The above description of the Tract nominated for lease has been provided and corrected, where required, exclusively by the nomination party. Any mineral lease selected from this Tract and awarded by the Louisiana State Mineral and Energy Board shall be without warranty of any kind, either express, implied, or statutory, including, but not limited to, the implied warranties of merchantability and fitness for a particular purpose. Should the mineral lease awarded by the Louisiana State Mineral and Energy Board be subsequently modified, cancelled or abrogated due to the existence of conflicting leases, operating agreements, private claims or other future obligations or conditions which may affect all or any portion of the leased Tract, it shall not relieve the Lessee of the obligation to pay any bonus due thereon to the Louisiana State Mineral and Energy Board, nor shall the Louisiana State Mineral and Energy Board be obligated to refund any consideration paid by the Lessor prior to such modification, cancellation, or abrogation, including, but not limited to, bonuses, rentals and royalties.

NOTE: The Office of Mineral Resources will require a minimum bonus of \$155 per acre and a minimum royalty of 20%.

Applicant: STAFF OFFICE OF MINERAL RESOURCES

Bidder	Cash Payment	Price/ Acre	Rental	Oil	Gas	Other

Legend

12030010

Active_Leases

IMAGERY.DOQQ_2004_1M

