

TRACT 42531 - East Carroll and West Carroll Parishes, Louisiana

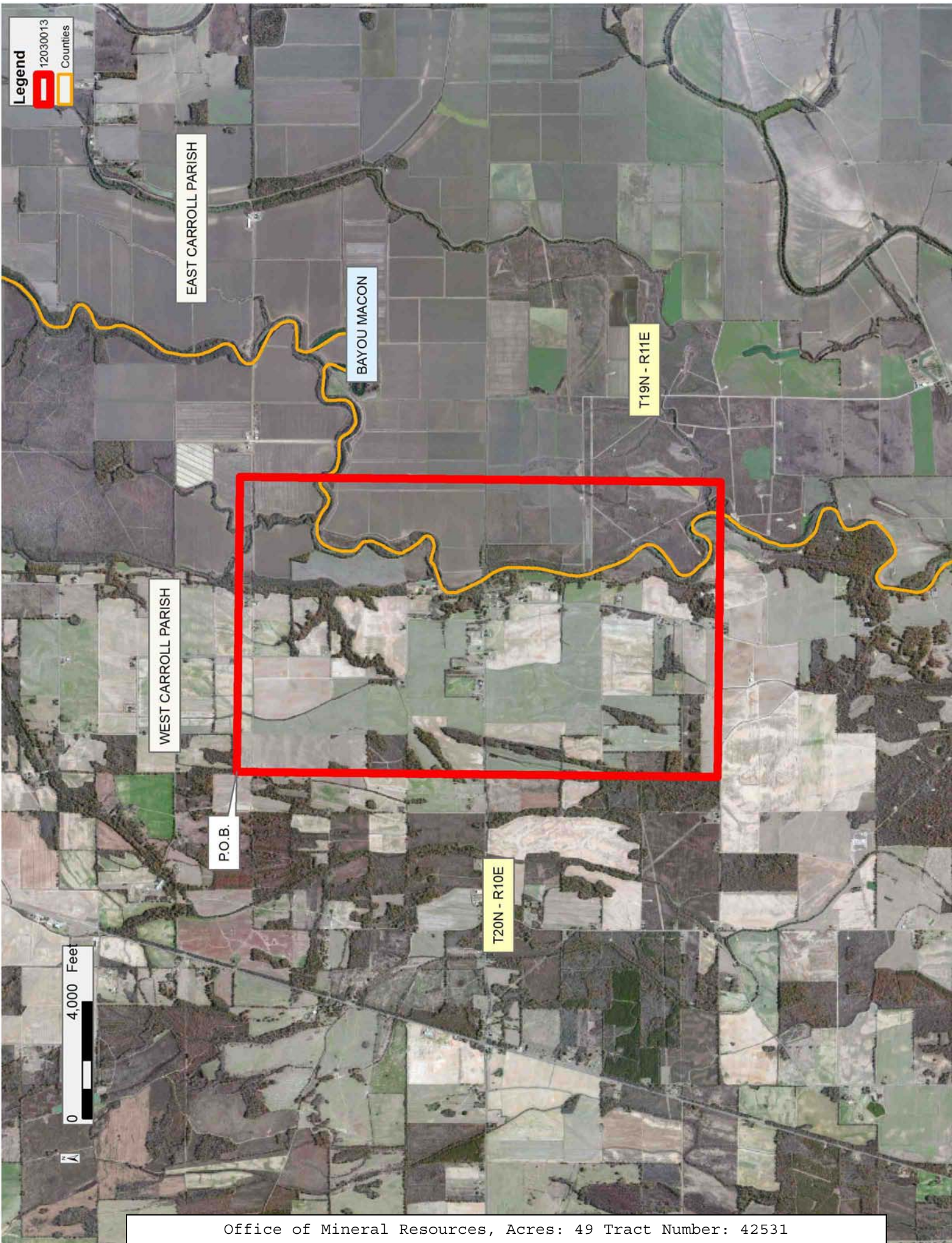
All of the lands now or formerly constituting the beds and bottoms of all water bodies of every nature and description as to which title is vested in the State of Louisiana, together with all islands arising therein and other lands formed by accretion or by reliction, where allowed by law, excepting tax adjudicated lands, and not presently under mineral lease on March 14, 2012, situated in East Carroll and West Carroll Parishes, Louisiana, and more particularly described as follows: Beginning at a point having Coordinates of X = 2,331,210.00 and Y = 741,660.00; thence East 10,085.00 feet to a point having Coordinates of X = 2,341,295.00 and Y = 741,660.00; thence South 16,440.00 feet to a point having Coordinates of X = 2,341,295.00 and Y = 725,220.00; thence West 10,085.00 feet to a point having Coordinates of X = 2,331,210.00 and Y = 725,220.00; thence North 16,440.00 feet to the point of beginning, containing approximately **49 acres**, all as more particularly outlined on a plat on file in the Office of Mineral Resources, Department of Natural Resources. All bearings, distances and coordinates are based on Louisiana Coordinate System of 1927, (North or South Zone), where applicable.

NOTE: The above description of the Tract nominated for lease has been provided and corrected, where required, exclusively by the nomination party. Any mineral lease selected from this Tract and awarded by the Louisiana State Mineral and Energy Board shall be without warranty of any kind, either express, implied, or statutory, including, but not limited to, the implied warranties of merchantability and fitness for a particular purpose. Should the mineral lease awarded by the Louisiana State Mineral and Energy Board be subsequently modified, cancelled or abrogated due to the existence of conflicting leases, operating agreements, private claims or other future obligations or conditions which may affect all or any portion of the leased Tract, it shall not relieve the Lessee of the obligation to pay any bonus due thereon to the Louisiana State Mineral and Energy Board, nor shall the Louisiana State Mineral and Energy Board be obligated to refund any consideration paid by the Lessor prior to such modification, cancellation, or abrogation, including, but not limited to, bonuses, rentals and royalties.

NOTE: The Office of Mineral Resources will require a minimum bonus of \$155 per acre and a minimum royalty of 20%.

Bidder	Cash Payment	Price/ Acre	Rental	Oil	Gas	Other

Applicant: STAFF OFFICE OF MINERAL RESOURCES



TRACT 42532 - East Carroll Parish, Louisiana

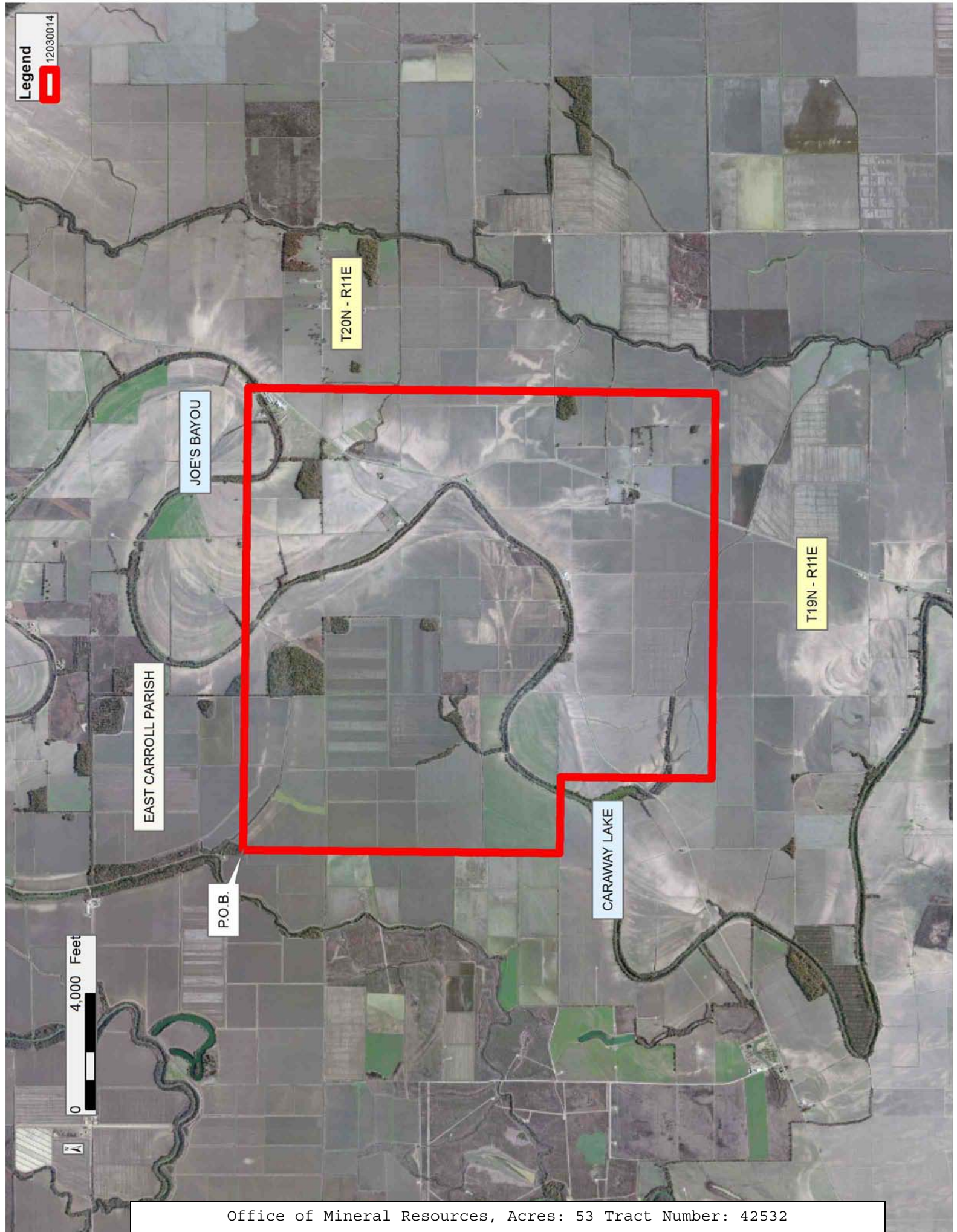
All of the lands now or formerly constituting the beds and bottoms of all water bodies of every nature and description as to which title is vested in the State of Louisiana, together with all islands arising therein and other lands formed by accretion or by reliction, where allowed by law, excepting tax adjudicated lands, and not presently under mineral lease on March 14, 2012, situated in East Carroll Parish, Louisiana, and more particularly described as follows: Beginning at a point having Coordinates of X = 2,352,075.00 and Y = 736,125.00; thence East 15,905.00 feet to a point having Coordinates of X = 2,367,980.00 and Y = 736,125.00; thence South 16,100.00 feet to a point having Coordinates of X = 2,367,980.00 and Y = 720,025.00; thence West 13,275.00 feet to a point having Coordinates of X = 2,354,705.00 and Y = 720,025.00; thence North 5,195.00 feet a point having Coordinates of X = 2,354,705.00 and Y = 725,220.00; thence West 2,630.00 feet to a point having Coordinates of X = 2,352,075.00 and Y = 725,220.00; thence North 10,905.00 feet to the point of beginning, containing approximately **53 acres**, all as more particularly outlined on a plat on file in the Office of Mineral Resources, Department of Natural Resources. All bearings, distances and coordinates are based on Louisiana Coordinate System of 1927, (North or South Zone), where applicable.

NOTE: The above description of the Tract nominated for lease has been provided and corrected, where required, exclusively by the nomination party. Any mineral lease selected from this Tract and awarded by the Louisiana State Mineral and Energy Board shall be without warranty of any kind, either express, implied, or statutory, including, but not limited to, the implied warranties of merchantability and fitness for a particular purpose. Should the mineral lease awarded by the Louisiana State Mineral and Energy Board be subsequently modified, cancelled or abrogated due to the existence of conflicting leases, operating agreements, private claims or other future obligations or conditions which may affect all or any portion of the leased Tract, it shall not relieve the Lessee of the obligation to pay any bonus due thereon to the Louisiana State Mineral and Energy Board, nor shall the Louisiana State Mineral and Energy Board be obligated to refund any consideration paid by the Lessor prior to such modification, cancellation, or abrogation, including, but not limited to, bonuses, rentals and royalties.

NOTE: The Office of Mineral Resources will require a minimum bonus of \$155 per acre and a minimum royalty of 20%.

Applicant: STAFF OFFICE OF MINERAL RESOURCES

Bidder	Cash Payment	Price/ Acre	Rental	Oil	Gas	Other



TRACT 42533 - East Carroll Parish, Louisiana

All of the lands now or formerly constituting the beds and bottoms of all water bodies of every nature and description as to which title is vested in the State of Louisiana, together with all islands arising therein and other lands formed by accretion or by reliction, where allowed by law, excepting tax adjudicated lands, and not presently under mineral lease on March 14, 2012, situated in East Carroll Parish, Louisiana, and more particularly described as follows: Beginning at a point having Coordinates of X = 2,405,100.00 and Y = 733,355.00; thence East 13,500.00 feet to a point having Coordinates of X = 2,418,600.00 and Y = 733,355.00; thence South 17,530.00 feet to a point having Coordinates of X = 2,418,600.00 and Y = 715,825.00; thence West 13,500.00 feet to a point having Coordinates of X = 2,405,100.00 and Y = 715,825.00; thence North 17,530.00 feet to the point of beginning, and **LESS AND EXCEPT** that portion, if any, of the above described tract that may lie within the State of Mississippi, containing approximately **298 acres**, all as more particularly outlined on a plat on file in the Office of Mineral Resources, Department of Natural Resources. All bearings, distances and coordinates are based on Louisiana Coordinate System of 1927, (North or South Zone), where applicable.

NOTE: The above description of the Tract nominated for lease has been provided and corrected, where required, exclusively by the nomination party. Any mineral lease selected from this Tract and awarded by the Louisiana State Mineral and Energy Board shall be without warranty of any kind, either express, implied, or statutory, including, but not limited to, the implied warranties of merchantability and fitness for a particular purpose. Should the mineral lease awarded by the Louisiana State Mineral and Energy Board be subsequently modified, cancelled or abrogated due to the existence of conflicting leases, operating agreements, private claims or other future obligations or conditions which may affect all or any portion of the leased Tract, it shall not relieve the Lessee of the obligation to pay any bonus due thereon to the Louisiana State Mineral and Energy Board, nor shall the Louisiana State Mineral and Energy Board be obligated to refund any consideration paid by the Lessor prior to such modification, cancellation, or abrogation, including, but not limited to, bonuses, rentals and royalties.

NOTE: The Office of Mineral Resources will require a minimum bonus of \$155 per acre and a minimum royalty of 20%.

Applicant: STAFF OFFICE OF MINERAL RESOURCES

Bidder	Cash Payment	Price/ Acre	Rental	Oil	Gas	Other

Legend

12030015



IMAGERY.DOQQ_2004_1M

T20N - R13E

EAST CARROLL PARISH

MISSISSIPPI RIVER

MISSISSIPPI RIVER

P.O.B.

T19N - R12E

0 4,000 Feet



TRACT 42534 - East Carroll Parish, Louisiana

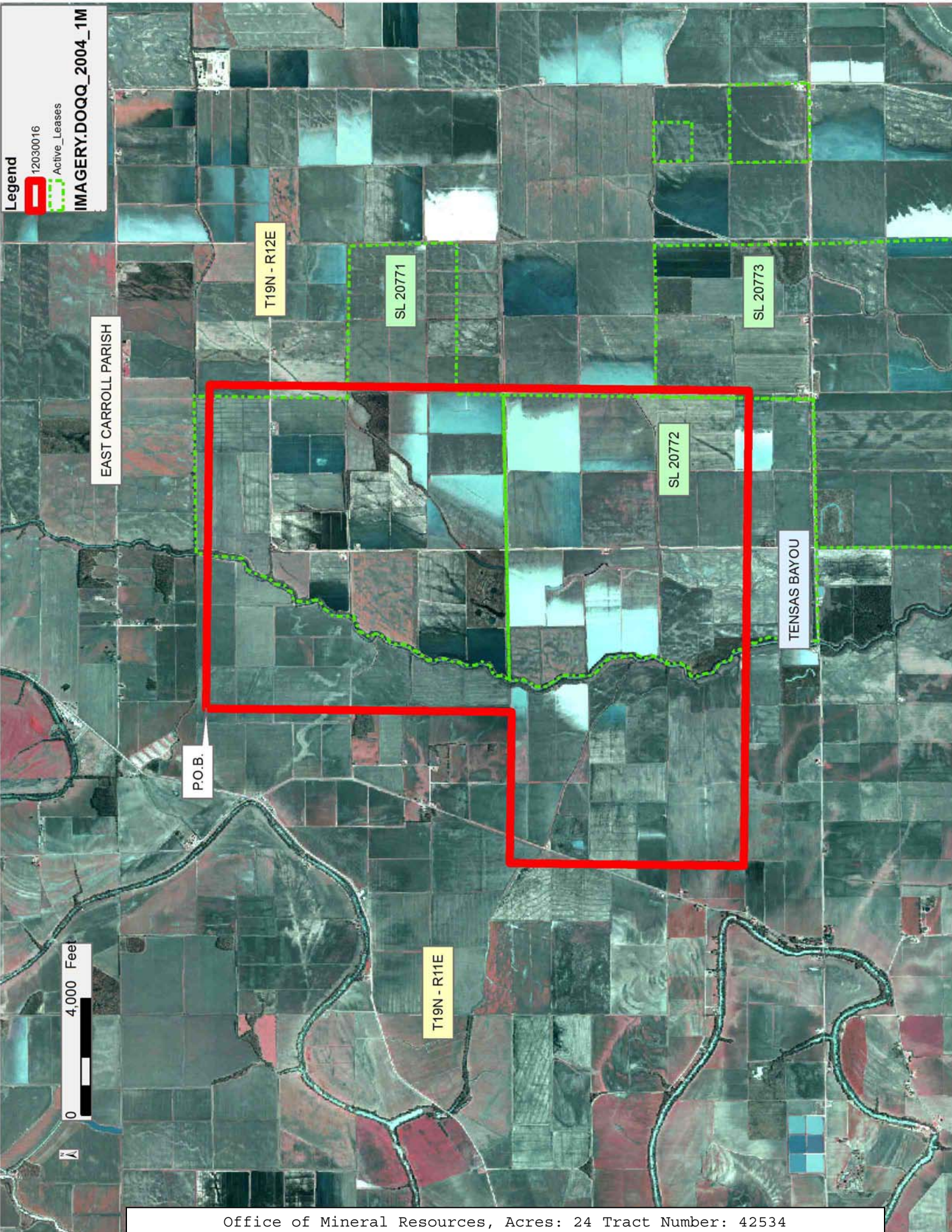
All of the lands now or formerly constituting the beds and bottoms of all water bodies of every nature and description as to which title is vested in the State of Louisiana, together with all islands arising therein and other lands formed by accretion or by reliction, where allowed by law, excepting tax adjudicated lands, and not presently under mineral lease on March 14, 2012, situated in East Carroll Parish, Louisiana, and more particularly described as follows: Beginning at a point having Coordinates of X = 2,367,980.00 and Y = 730,490.00; thence East 11,095.00 feet to a point having Coordinates of X = 2,379,075.00 and Y = 730,490.00; thence South 18,480.00 feet to a point having Coordinates of X = 2,379,075.00 and Y = 712,010.00; thence West 16,280.00 feet to a point having Coordinates of X = 2,362,795.00 and Y = 712,010.00; thence North 8,015.00 feet a point having Coordinates of X = 2,362,795.00 and Y = 720,025.00; thence East 5,185.00 feet to a point having Coordinates of X = 2,367,980.00 and Y = 720,025.00; thence North 10,465.00 feet to the point of beginning, containing approximately **24 acres**, all as more particularly outlined on a plat on file in the Office of Mineral Resources, Department of Natural Resources. All bearings, distances and coordinates are based on Louisiana Coordinate System of 1927, (North or South Zone), where applicable.

NOTE: The above description of the Tract nominated for lease has been provided and corrected, where required, exclusively by the nomination party. Any mineral lease selected from this Tract and awarded by the Louisiana State Mineral and Energy Board shall be without warranty of any kind, either express, implied, or statutory, including, but not limited to, the implied warranties of merchantability and fitness for a particular purpose. Should the mineral lease awarded by the Louisiana State Mineral and Energy Board be subsequently modified, cancelled or abrogated due to the existence of conflicting leases, operating agreements, private claims or other future obligations or conditions which may affect all or any portion of the leased Tract, it shall not relieve the Lessee of the obligation to pay any bonus due thereon to the Louisiana State Mineral and Energy Board, nor shall the Louisiana State Mineral and Energy Board be obligated to refund any consideration paid by the Lessor prior to such modification, cancellation, or abrogation, including, but not limited to, bonuses, rentals and royalties.

NOTE: The Office of Mineral Resources will require a minimum bonus of \$155 per acre and a minimum royalty of 20%.

Applicant: STAFF OFFICE OF MINERAL RESOURCES

Bidder	Cash Payment	Price/ Acre	Rental	Oil	Gas	Other



Legend

 12030016

 Active_Leases

IMAGERY.DOQQ_2004_1M

EAST CARROLL PARISH

T19N - R12E

SL 20771

SL 20773

SL 20772

TENSAS BAYOU

T19N - R11E

P.O.B.

0 4,000 Feet

TRACT 42535 - East Carroll and West Carroll Parishes, Louisiana

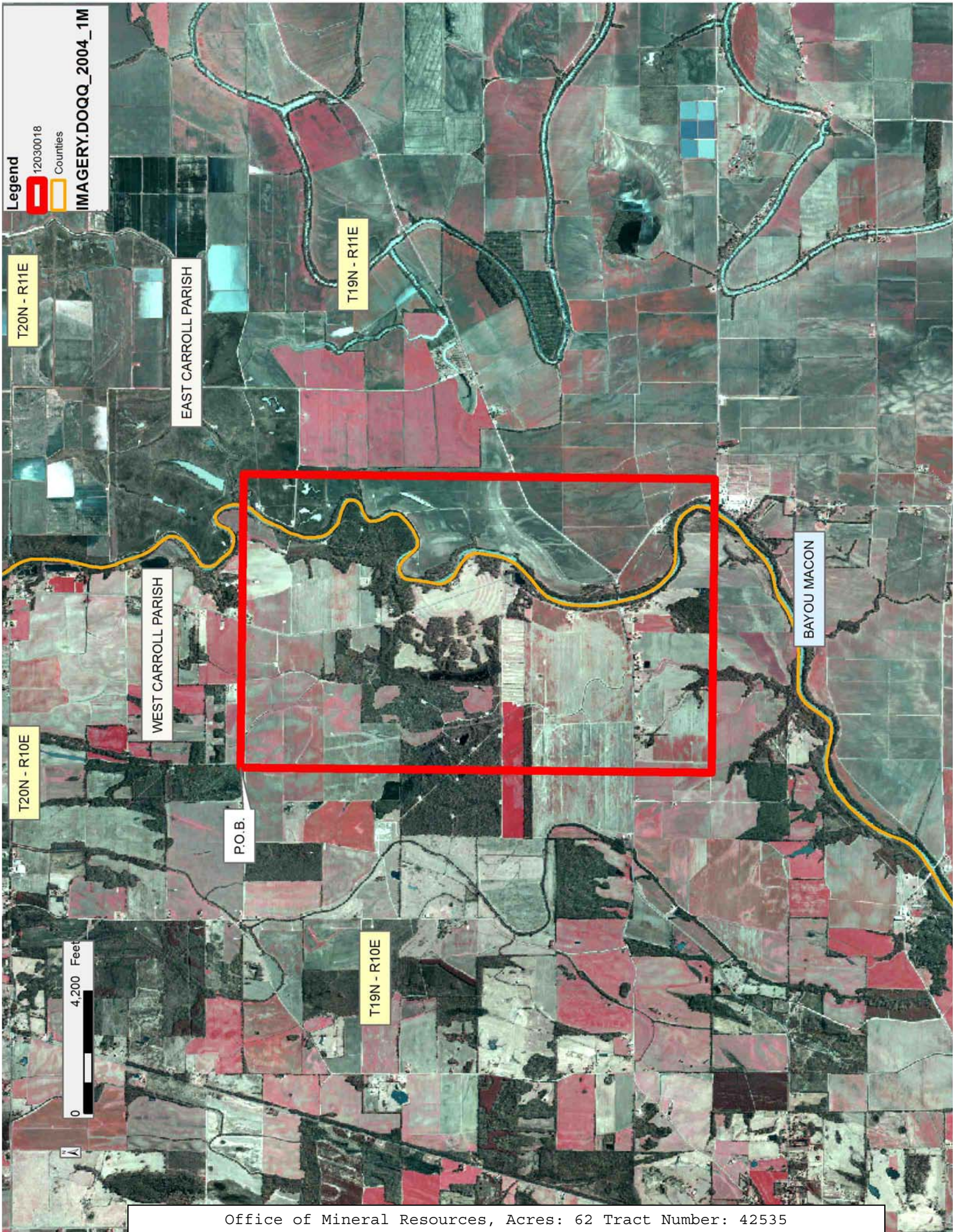
All of the lands now or formerly constituting the beds and bottoms of all water bodies of every nature and description as to which title is vested in the State of Louisiana, together with all islands arising therein and other lands formed by accretion or by reliction, where allowed by law, excepting tax adjudicated lands, and not presently under mineral lease on March 14, 2012, situated in East Carroll and West Carroll Parishes, Louisiana, and more particularly described as follows: Beginning at a point having Coordinates of X = 2,331,210.00 and Y = 725,220.00; thence East 10,085.00 feet to a point having Coordinates of X = 2,341,295.00 and Y = 725,220.00; thence South 16,165.00 feet to a point having Coordinates of X = 2,341,295.00 and Y = 709,055.00; thence West 10,085.00 feet to a point having Coordinates of X = 2,331,210.00 and Y = 709,055.00; thence North 16,165.00 feet to the point of beginning, (This tract includes only waterbottoms claimed and owned by the state and specifically excludes any land which the state may claim or own and to which the mineral rights are vested in the state), containing approximately **62 acres**, all as more particularly outlined on a plat on file in the Office of Mineral Resources, Department of Natural Resources. All bearings, distances and coordinates are based on Louisiana Coordinate System of 1927, (North or South Zone), where applicable.

NOTE: The above description of the Tract nominated for lease has been provided and corrected, where required, exclusively by the nomination party. Any mineral lease selected from this Tract and awarded by the Louisiana State Mineral and Energy Board shall be without warranty of any kind, either express, implied, or statutory, including, but not limited to, the implied warranties of merchantability and fitness for a particular purpose. Should the mineral lease awarded by the Louisiana State Mineral and Energy Board be subsequently modified, cancelled or abrogated due to the existence of conflicting leases, operating agreements, private claims or other future obligations or conditions which may affect all or any portion of the leased Tract, it shall not relieve the Lessee of the obligation to pay any bonus due thereon to the Louisiana State Mineral and Energy Board, nor shall the Louisiana State Mineral and Energy Board be obligated to refund any consideration paid by the Lessor prior to such modification, cancellation, or abrogation, including, but not limited to, bonuses, rentals and royalties.

NOTE: The Office of Mineral Resources will require a minimum bonus of \$155 per acre and a minimum royalty of 20%.

Applicant: STAFF OFFICE OF MINERAL RESOURCES

Bidder	Cash Payment	Price/ Acre	Rental	Oil	Gas	Other



TRACT 42536 - East Carroll Parish, Louisiana

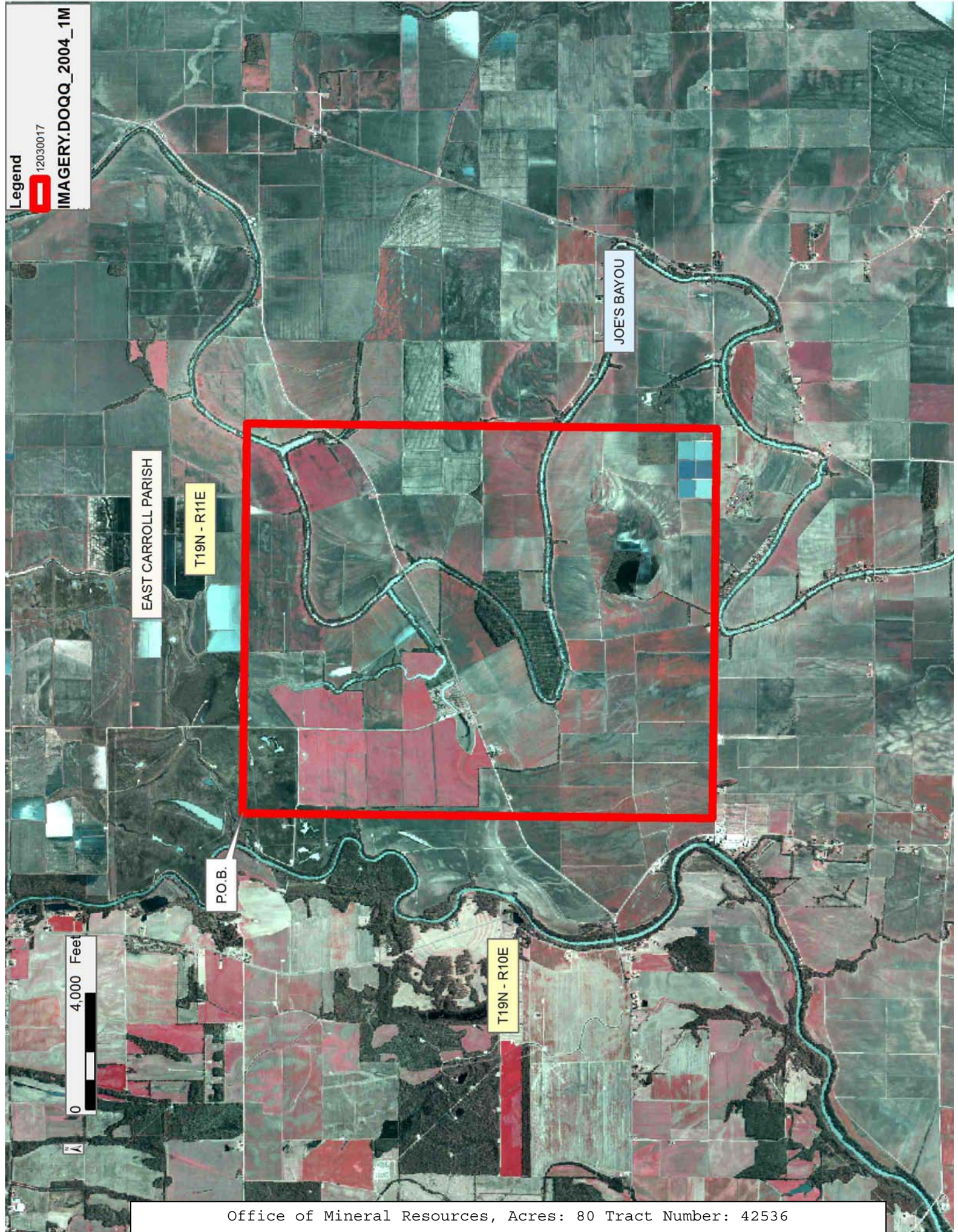
All of the lands now or formerly constituting the beds and bottoms of all water bodies of every nature and description as to which title is vested in the State of Louisiana, together with all islands arising therein and other lands formed by accretion or by reliction, where allowed by law, excepting tax adjudicated lands, and not presently under mineral lease on March 14, 2012, situated in East Carroll Parish, Louisiana, and more particularly described as follows: Beginning at a point having Coordinates of X = 2,341,295.00 and Y = 725,220.00; thence East 13,410.00 feet to a point having Coordinates of X = 2,354,705.00 and Y = 725,220.00; thence South 16,165.00 feet to a point having Coordinates of X = 2,354,705.00 and Y = 709,055.00; thence West 13,410.00 feet to a point having Coordinates of X = 2,341,295.00 and Y = 709,055.00; thence North 16,165.00 feet to the point of beginning, containing approximately **80 acres**, all as more particularly outlined on a plat on file in the Office of Mineral Resources, Department of Natural Resources. All bearings, distances and coordinates are based on Louisiana Coordinate System of 1927, (North or South Zone), where applicable.

NOTE: The above description of the Tract nominated for lease has been provided and corrected, where required, exclusively by the nomination party. Any mineral lease selected from this Tract and awarded by the Louisiana State Mineral and Energy Board shall be without warranty of any kind, either express, implied, or statutory, including, but not limited to, the implied warranties of merchantability and fitness for a particular purpose. Should the mineral lease awarded by the Louisiana State Mineral and Energy Board be subsequently modified, cancelled or abrogated due to the existence of conflicting leases, operating agreements, private claims or other future obligations or conditions which may affect all or any portion of the leased Tract, it shall not relieve the Lessee of the obligation to pay any bonus due thereon to the Louisiana State Mineral and Energy Board, nor shall the Louisiana State Mineral and Energy Board be obligated to refund any consideration paid by the Lessor prior to such modification, cancellation, or abrogation, including, but not limited to, bonuses, rentals and royalties.

NOTE: The Office of Mineral Resources will require a minimum bonus of \$155 per acre and a minimum royalty of 20%.

Applicant: STAFF OFFICE OF MINERAL RESOURCES

Bidder	Cash Payment	Price/ Acre	Rental	Oil	Gas	Other



TRACT 42537 - East Carroll Parish, Louisiana

All of the lands now or formerly constituting the beds and bottoms of all water bodies of every nature and description as to which title is vested in the State of Louisiana, together with all islands arising therein and other lands formed by accretion or by reliction, where allowed by law, excepting tax adjudicated lands, and not presently under mineral lease on March 14, 2012, situated in East Carroll Parish, Louisiana, and more particularly described as follows: Beginning at a point having Coordinates of X = 2,354,705.00 and Y = 720,025.00; thence East 8,090.00 feet to a point having Coordinates of X = 2,362,795.00 and Y = 720,025.00; thence South 16,175.00 feet to a point having Coordinates of X = 2,362,795.00 and Y = 703,850.00; thence West 8,090.00 feet to a point having Coordinates of X = 2,354,705.00 and Y = 703,850.00; thence North 16,175.00 feet to the point of beginning, containing approximately **47 acres**, all as more particularly outlined on a plat on file in the Office of Mineral Resources, Department of Natural Resources. All bearings, distances and coordinates are based on Louisiana Coordinate System of 1927, (North or South Zone), where applicable.

NOTE: The above description of the Tract nominated for lease has been provided and corrected, where required, exclusively by the nomination party. Any mineral lease selected from this Tract and awarded by the Louisiana State Mineral and Energy Board shall be without warranty of any kind, either express, implied, or statutory, including, but not limited to, the implied warranties of merchantability and fitness for a particular purpose. Should the mineral lease awarded by the Louisiana State Mineral and Energy Board be subsequently modified, cancelled or abrogated due to the existence of conflicting leases, operating agreements, private claims or other future obligations or conditions which may affect all or any portion of the leased Tract, it shall not relieve the Lessee of the obligation to pay any bonus due thereon to the Louisiana State Mineral and Energy Board, nor shall the Louisiana State Mineral and Energy Board be obligated to refund any consideration paid by the Lessor prior to such modification, cancellation, or abrogation, including, but not limited to, bonuses, rentals and royalties.

NOTE: The Office of Mineral Resources will require a minimum bonus of \$155 per acre and a minimum royalty of 20%.

Applicant: STAFF OFFICE OF MINERAL RESOURCES

Bidder	Cash Payment	Price/ Acre	Rental	Oil	Gas	Other

Legend

12030019

Counties

IMAGERY.DOQQ_2004_1M

EAST CARROLL PARISH

T19N - R11E

P.O.B.

JOE'S BAYOU

0 3,000 Feet

TRACT 42538 - East Carroll Parish, Louisiana

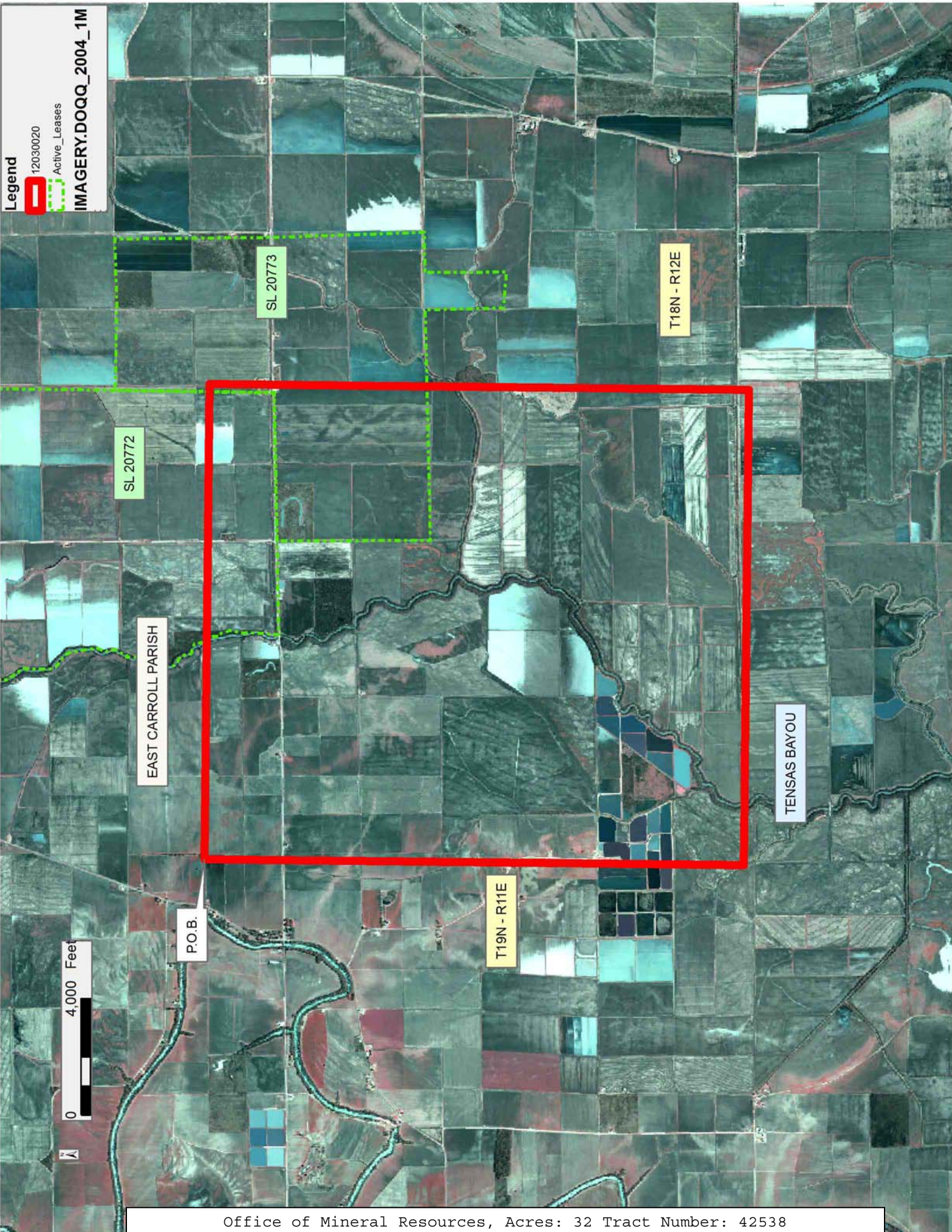
All of the lands now or formerly constituting the beds and bottoms of all water bodies of every nature and description as to which title is vested in the State of Louisiana, together with all islands arising therein and other lands formed by accretion or by reliction, where allowed by law, excepting tax adjudicated lands, and not presently under mineral lease on March 14, 2012, situated in East Carroll Parish, Louisiana, and more particularly described as follows: Beginning at a point having Coordinates of X = 2,362,795.00 and Y = 712,010.00; thence East 16,280.00 feet to a point having Coordinates of X = 2,379,075.00 and Y = 712,010.00; thence South 18,480.00 feet to a point having Coordinates of X = 2,379,075.00 and Y = 693,530.00; thence West 16,280.00 feet to a point having Coordinates of X = 2,362,795.00 and Y = 693,530.00; thence North 18,480.00 feet to the point of beginning, containing approximately **32 acres**, all as more particularly outlined on a plat on file in the Office of Mineral Resources, Department of Natural Resources. All bearings, distances and coordinates are based on Louisiana Coordinate System of 1927, (North or South Zone), where applicable.

NOTE: The above description of the Tract nominated for lease has been provided and corrected, where required, exclusively by the nomination party. Any mineral lease selected from this Tract and awarded by the Louisiana State Mineral and Energy Board shall be without warranty of any kind, either express, implied, or statutory, including, but not limited to, the implied warranties of merchantability and fitness for a particular purpose. Should the mineral lease awarded by the Louisiana State Mineral and Energy Board be subsequently modified, cancelled or abrogated due to the existence of conflicting leases, operating agreements, private claims or other future obligations or conditions which may affect all or any portion of the leased Tract, it shall not relieve the Lessee of the obligation to pay any bonus due thereon to the Louisiana State Mineral and Energy Board, nor shall the Louisiana State Mineral and Energy Board be obligated to refund any consideration paid by the Lessor prior to such modification, cancellation, or abrogation, including, but not limited to, bonuses, rentals and royalties.

NOTE: The Office of Mineral Resources will require a minimum bonus of \$155 per acre and a minimum royalty of 20%.

Applicant: STAFF OFFICE OF MINERAL RESOURCES

Bidder	Cash Payment	Price/ Acre	Rental	Oil	Gas	Other



TRACT 42539 - East Carroll Richland and West Carroll Parishes, Louisiana

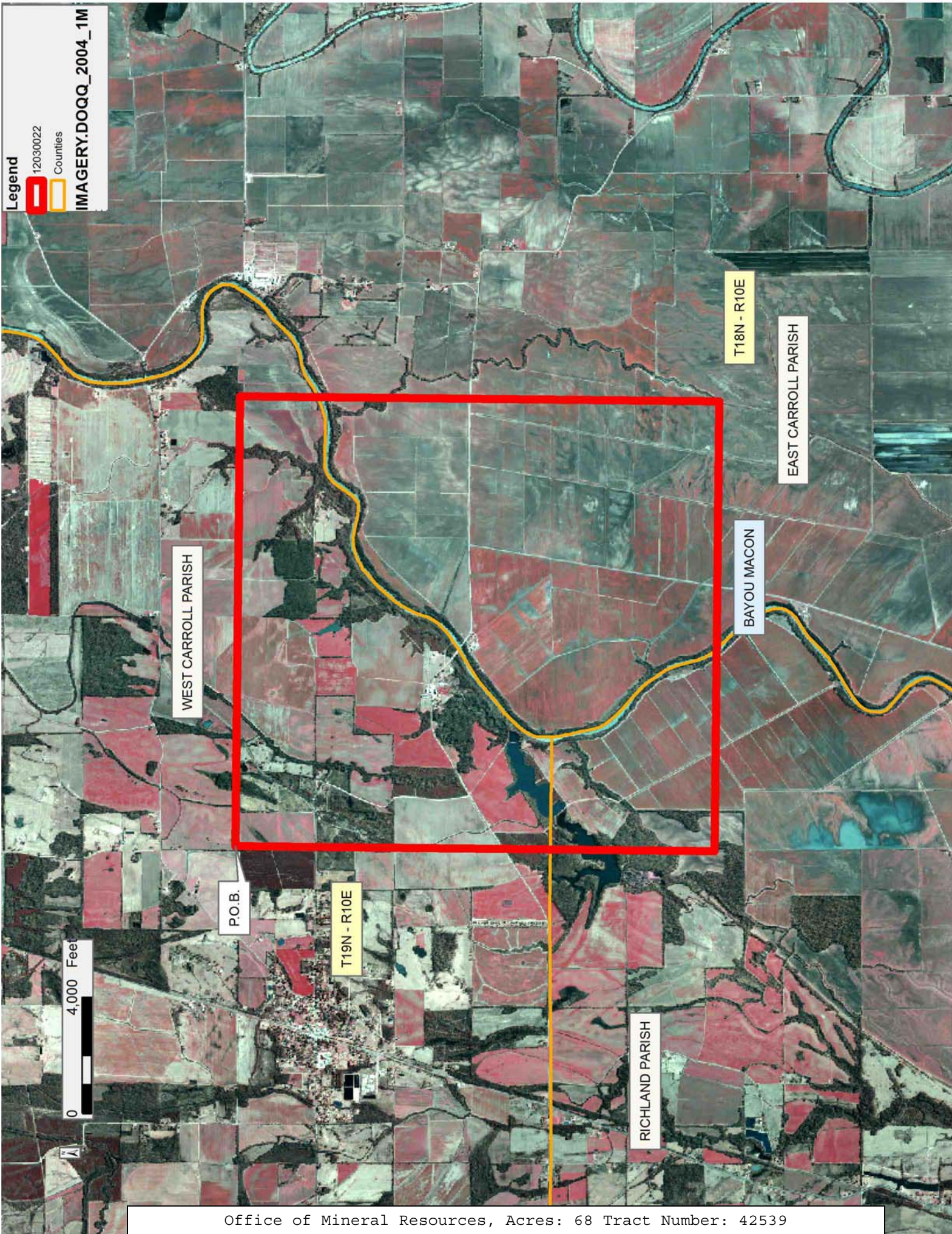
All of the lands now or formerly constituting the beds and bottoms of all water bodies of every nature and description as to which title is vested in the State of Louisiana, together with all islands arising therein and other lands formed by accretion or by reliction, where allowed by law, excepting tax adjudicated lands, and not presently under mineral lease on March 14, 2012, situated in East Carroll Richland and West Carroll Parishes, Louisiana, and more particularly described as follows: Beginning at a point having Coordinates of X = 2,321,065.00 and Y = 709,055.00; thence East 15,445.00 feet to a point having Coordinates of X = 2,336,510.00 and Y = 709,055.00; thence South 16,445.00 feet to a point having Coordinates of X = 2,336,510.00 and Y = 692,610.00; thence West 15,445.00 feet to a point having Coordinates of X = 2,321,065.00 and Y = 692,610.00; thence North 16,445.00 feet to the point of beginning, containing approximately **68 acres**, all as more particularly outlined on a plat on file in the Office of Mineral Resources, Department of Natural Resources. All bearings, distances and coordinates are based on Louisiana Coordinate System of 1927, (North or South Zone), where applicable.

NOTE: The above description of the Tract nominated for lease has been provided and corrected, where required, exclusively by the nomination party. Any mineral lease selected from this Tract and awarded by the Louisiana State Mineral and Energy Board shall be without warranty of any kind, either express, implied, or statutory, including, but not limited to, the implied warranties of merchantability and fitness for a particular purpose. Should the mineral lease awarded by the Louisiana State Mineral and Energy Board be subsequently modified, cancelled or abrogated due to the existence of conflicting leases, operating agreements, private claims or other future obligations or conditions which may affect all or any portion of the leased Tract, it shall not relieve the Lessee of the obligation to pay any bonus due thereon to the Louisiana State Mineral and Energy Board, nor shall the Louisiana State Mineral and Energy Board be obligated to refund any consideration paid by the Lessor prior to such modification, cancellation, or abrogation, including, but not limited to, bonuses, rentals and royalties.

NOTE: The Office of Mineral Resources will require a minimum bonus of \$155 per acre and a minimum royalty of 20%.

Applicant: STAFF OFFICE OF MINERAL RESOURCES

Bidder	Cash Payment	Price/ Acre	Rental	Oil	Gas	Other



TRACT 42540 - East Carroll and West Carroll Parishes, Louisiana

All of the lands now or formerly constituting the beds and bottoms of all water bodies of every nature and description as to which title is vested in the State of Louisiana, together with all islands arising therein and other lands formed by accretion or by reliction, where allowed by law, excepting tax adjudicated lands, and not presently under mineral lease on March 14, 2012, situated in East Carroll and West Carroll Parishes, Louisiana, and more particularly described as follows: Beginning at a point having Coordinates of X = 2,336,510.00 and Y = 709,055.00; thence East 18,195.00 feet to a point having Coordinates of X = 2,354,705.00 and Y = 709,055.00; thence South 16,445.00 feet to a point having Coordinates of X = 2,354,705.00 and Y = 692,610.00; thence West 18,195.00 feet to a point having Coordinates of X = 2,336,510.00 and Y = 692,610.00; thence North 16,445.00 feet to the point of beginning, containing approximately **109 acres**, all as more particularly outlined on a plat on file in the Office of Mineral Resources, Department of Natural Resources. All bearings, distances and coordinates are based on Louisiana Coordinate System of 1927, (North or South Zone), where applicable.

NOTE: The above description of the Tract nominated for lease has been provided and corrected, where required, exclusively by the nomination party. Any mineral lease selected from this Tract and awarded by the Louisiana State Mineral and Energy Board shall be without warranty of any kind, either express, implied, or statutory, including, but not limited to, the implied warranties of merchantability and fitness for a particular purpose. Should the mineral lease awarded by the Louisiana State Mineral and Energy Board be subsequently modified, cancelled or abrogated due to the existence of conflicting leases, operating agreements, private claims or other future obligations or conditions which may affect all or any portion of the leased Tract, it shall not relieve the Lessee of the obligation to pay any bonus due thereon to the Louisiana State Mineral and Energy Board, nor shall the Louisiana State Mineral and Energy Board be obligated to refund any consideration paid by the Lessor prior to such modification, cancellation, or abrogation, including, but not limited to, bonuses, rentals and royalties.

NOTE: The Office of Mineral Resources will require a minimum bonus of \$155 per acre and a minimum royalty of 20%.

Applicant: STAFF OFFICE OF MINERAL RESOURCES

Bidder	Cash Payment	Price/ Acre	Rental	Oil	Gas	Other

