

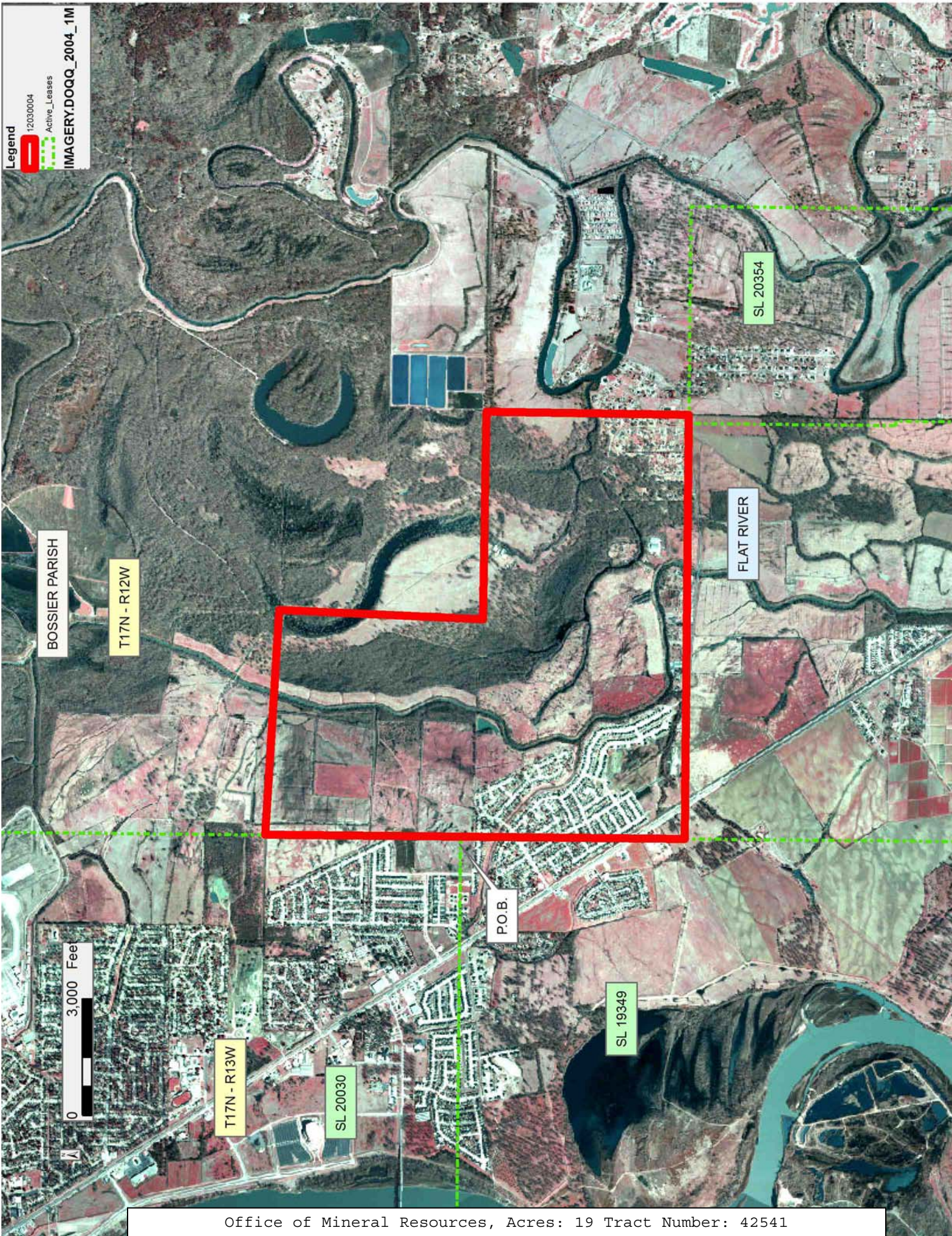
TRACT 42541 - Bossier Parish, Louisiana

All of the lands now or formerly constituting the beds and bottoms of all water bodies of every nature and description as to which title is vested in the State of Louisiana, together with all islands arising therein and other lands formed by accretion or by reliction, where allowed by law, excepting tax adjudicated lands, and not presently under mineral lease on March 14, 2012, situated in Bossier Parish, Louisiana, and more particularly described as follows: Beginning at a point being the Northeast corner of State Lease No. 19349 and the Southeast corner of State Lease No. 20030 having Coordinates of X = 1,645,728.17 and Y = 652,364.67; thence North 00 degrees 00 minutes 00 seconds West a distance of 5,019.57 feet to a point having Coordinates of X = 1,645,728.17 and Y = 657,384.24; thence South 86 degrees 54 minutes 21 seconds East a distance of 5,789.52 feet to a point having Coordinates of X = 1,651,509.25 and Y = 657,071.74; thence South 02 degrees 05 minutes 35 seconds West a distance of 5,232.86 feet to a point having Coordinates of X = 1,651,318.12 and Y = 651,842.37; thence South 89 degrees 30 minutes 36 seconds East a distance of 5,334.38 feet to a point having Coordinates of X = 1,656,652.31 and Y = 651,796.75; thence South 00 degrees 20 minutes 44 seconds West a distance of 5,196.84 feet to a point on the North boundary of State Lease No. 20354, as amended having Coordinates of X = 1,656,620.98 and Y = 646,600.00; thence North 90 degrees 00 minutes 00 seconds West a distance of 224.28 feet to a point being the Northwest corner of said State Lease No. 20354 having Coordinates of X = 1,656,396.70 and Y = 646,600.00; thence South 90 degrees 00 minutes 00 seconds West a distance of 10,668.53 feet to a point having Coordinates of X = 1,645,728.17 and Y = 646,600.00; thence North 00 degrees 00 minutes 00 seconds West a distance of 5,764.67 feet to the point of beginning, containing approximately **19 acres**, all as more particularly outlined on a plat on file in the Office of Mineral Resources, Department of Natural Resources. All bearings, distances and coordinates are based on Louisiana Coordinate System of 1927, (North or South Zone), where applicable.

NOTE: The above description of the Tract nominated for lease has been provided and corrected, where required, exclusively by the nomination party. Any mineral lease selected from this Tract and awarded by the Louisiana State Mineral and Energy Board shall be without warranty of any kind, either express, implied, or statutory, including, but not limited to, the implied warranties of merchantability and fitness for a particular purpose. Should the mineral lease awarded by the Louisiana State Mineral and Energy Board be subsequently modified, cancelled or abrogated due to the existence of conflicting leases, operating agreements, private claims or other future obligations or conditions which may affect all or any portion of the leased Tract, it shall not relieve the Lessee of the obligation to pay any bonus due thereon to the Louisiana State Mineral and Energy Board, nor shall the Louisiana State Mineral and Energy Board be obligated to refund any consideration paid by the Lessor prior to such modification, cancellation, or abrogation, including, but not limited to, bonuses, rentals and royalties.

Applicant: AUDUBON OIL AND GAS CORPORATION

Bidder	Cash Payment	Price/ Acre	Rental	Oil	Gas	Other



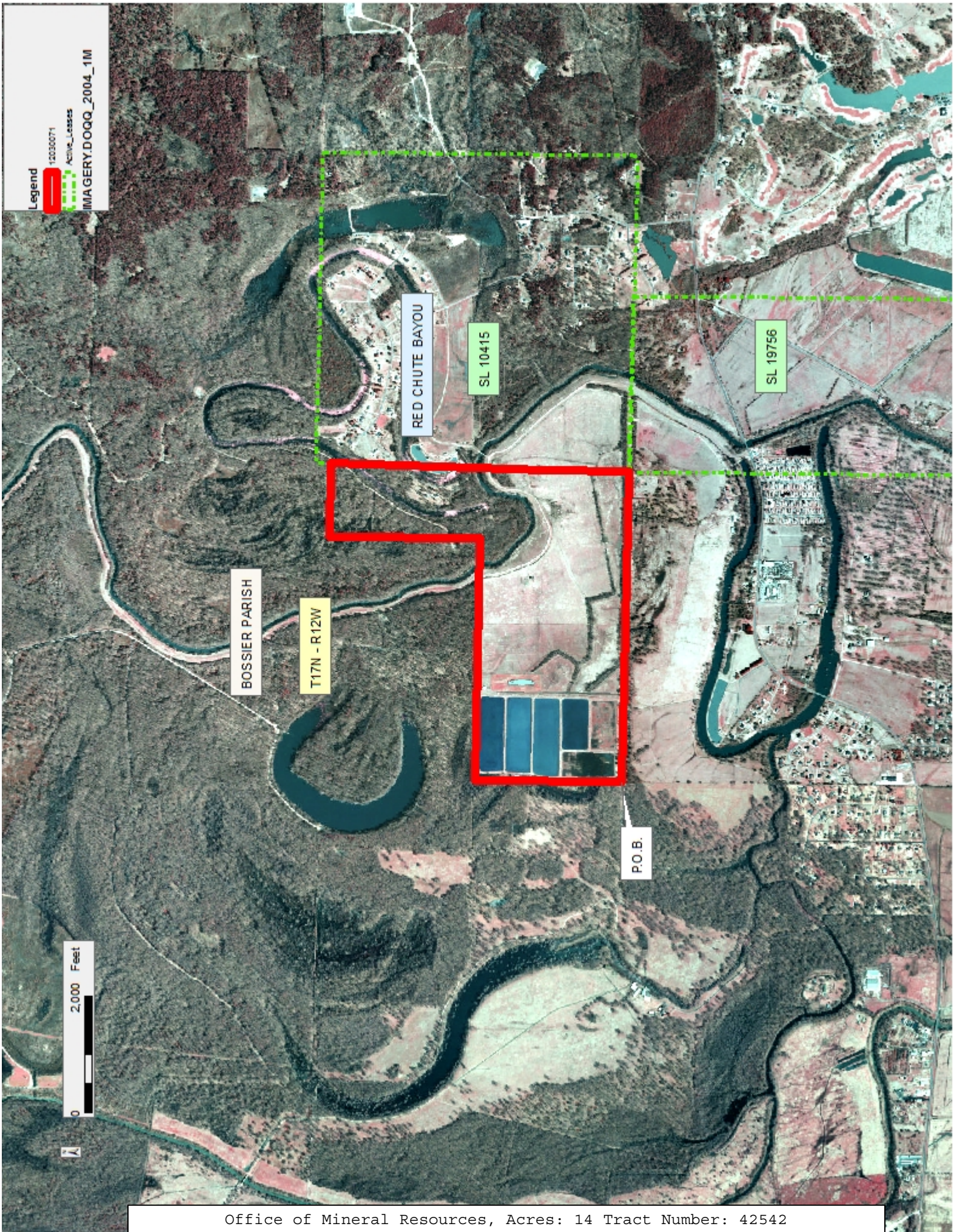
TRACT 42542 - Bossier Parish, Louisiana

All of the lands now or formerly constituting the beds and bottoms of all water bodies of every nature and description as to which title is vested in the State of Louisiana, together with all islands arising therein and other lands formed by accretion or by reliction, where allowed by law, excepting tax adjudicated lands, and not presently under mineral lease on March 14, 2012, situated in Bossier Parish, Louisiana, and more particularly described as follows: Beginning at a point having Coordinates X = 1,656,652.35 and Y = 651,791.96; Thence North 00 degrees 25 minutes 47 seconds West a distance of 2,521.39 feet to a point having Coordinates of X = 1,656,633.44 and Y = 654,313.28; Thence South 89 degrees 20 minutes 11 seconds East a distance of 4,164.69 feet to a point having Coordinates of X = 1,660,797.85 and Y = 654,265.04; Thence North 00 degrees 06 minutes 02 seconds East a distance of 2,576.62 feet to a point having Coordinates of X = 1,660,802.37 and Y = 656,841.65; Thence East approximately 1,271 feet to a point on the West boundary of State Lease No. 10415, as amended having a Coordinate of Y = 656,841.65; Thence Southerly approximately 5,116 feet along the West boundary of said State Lease No. 10415 to its Southwestern corner; Thence Westerly approximately 5,324 feet to the point of beginning, **LESS AND EXCEPT** that portion, if any, of State Lease No. 10415, as amended that may lie within the above described tract, containing approximately **14 acres**, all as more particularly outlined on a plat on file in the Office of Mineral Resources, Department of Natural Resources. All bearings, distances and coordinates are based on Louisiana Coordinate System of 1927, (North or South Zone), where applicable.

NOTE: The above description of the Tract nominated for lease has been provided and corrected, where required, exclusively by the nomination party. Any mineral lease selected from this Tract and awarded by the Louisiana State Mineral and Energy Board shall be without warranty of any kind, either express, implied, or statutory, including, but not limited to, the implied warranties of merchantability and fitness for a particular purpose. Should the mineral lease awarded by the Louisiana State Mineral and Energy Board be subsequently modified, cancelled or abrogated due to the existence of conflicting leases, operating agreements, private claims or other future obligations or conditions which may affect all or any portion of the leased Tract, it shall not relieve the Lessee of the obligation to pay any bonus due thereon to the Louisiana State Mineral and Energy Board, nor shall the Louisiana State Mineral and Energy Board be obligated to refund any consideration paid by the Lessor prior to such modification, cancellation, or abrogation, including, but not limited to, bonuses, rentals and royalties.

Applicant: AUDUBON OIL AND GAS CORPORATION

Bidder	Cash Payment	Price/ Acre	Rental	Oil	Gas	Other



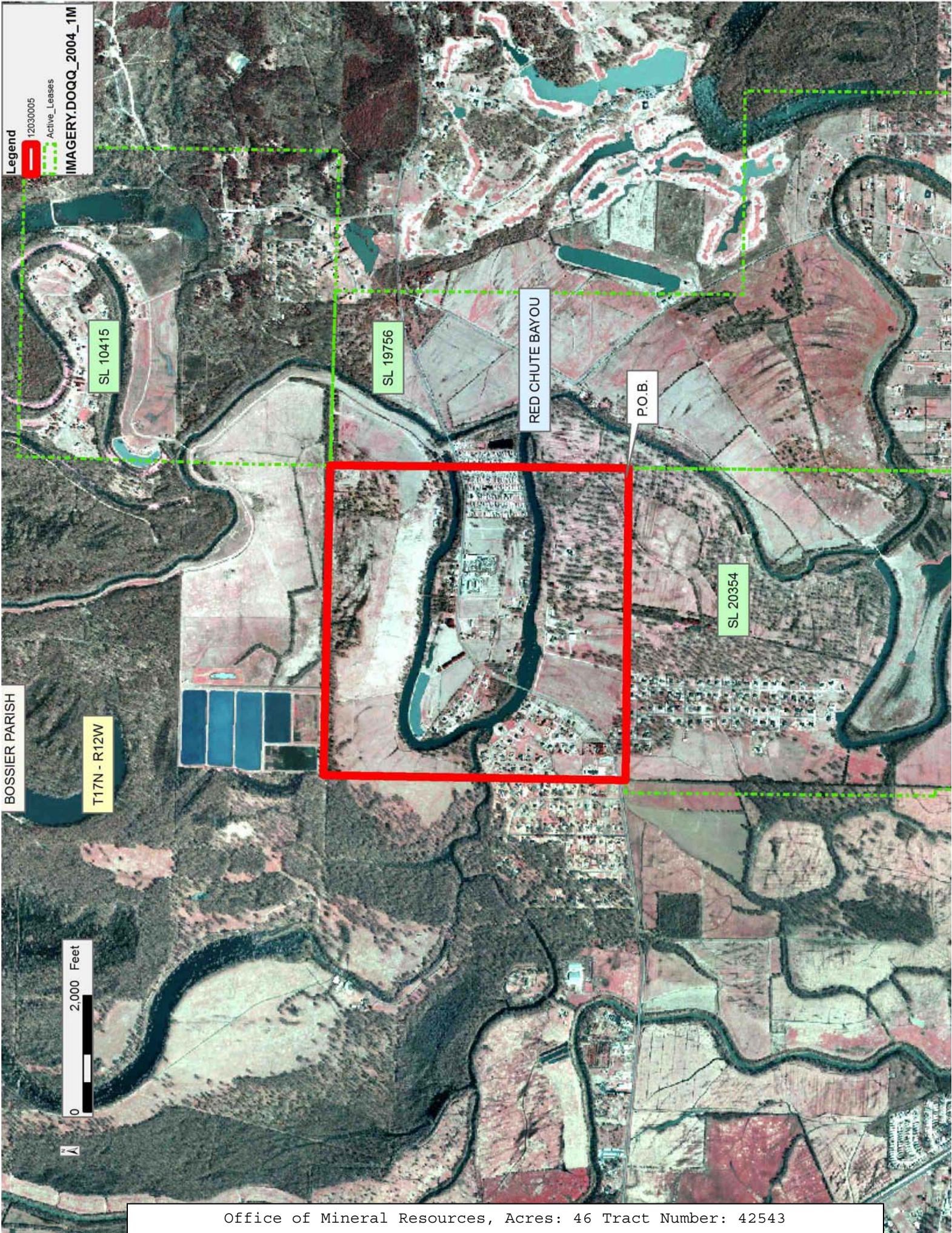
TRACT 42543 - Bossier Parish, Louisiana

All of the lands now or formerly constituting the beds and bottoms of all water bodies of every nature and description as to which title is vested in the State of Louisiana, together with all islands arising therein and other lands formed by accretion or by reliction, where allowed by law, excepting tax adjudicated lands, and not presently under mineral lease on March 14, 2012, situated in Bossier Parish, Louisiana, and more particularly described as follows: Beginning at the Northeast corner of State Lease No. 20354, as amended having Coordinates of X = 1,661,976.70 and Y = 646,600.00; Thence North 89 degrees 59 minutes 59 seconds West a distance of 5,355.79 feet along the North boundary of said State Lease No. 20354 to a point having Coordinates of X = 1,656,620.91 and Y = 646,600.00; Thence North 00 degrees 20 minutes 49 seconds East a distance of 5,192.06 feet to a point having Coordinates of X = 1,656,652.35 and Y = 651,791.96; Thence Easterly approximately 5,324 feet to a point being the Southwestern corner of State Lease No. 10415, as amended and the Northwestern corner of State Lease No. 19756; Thence Southerly along the West boundary said State Lease No. 19756 approximately 5,122 feet to the point of beginning, **LESS AND EXCEPT** that portion, if any, of State Lease No. 19756, State Lease No. 10415, as amended and State Lease No. 20354, as amended that may lie within the above described tract, containing approximately **46 acres**, all as more particularly outlined on a plat on file in the Office of Mineral Resources, Department of Natural Resources. All bearings, distances and coordinates are based on Louisiana Coordinate System of 1927, (North or South Zone), where applicable.

NOTE: The above description of the Tract nominated for lease has been provided and corrected, where required, exclusively by the nomination party. Any mineral lease selected from this Tract and awarded by the Louisiana State Mineral and Energy Board shall be without warranty of any kind, either express, implied, or statutory, including, but not limited to, the implied warranties of merchantability and fitness for a particular purpose. Should the mineral lease awarded by the Louisiana State Mineral and Energy Board be subsequently modified, cancelled or abrogated due to the existence of conflicting leases, operating agreements, private claims or other future obligations or conditions which may affect all or any portion of the leased Tract, it shall not relieve the Lessee of the obligation to pay any bonus due thereon to the Louisiana State Mineral and Energy Board, nor shall the Louisiana State Mineral and Energy Board be obligated to refund any consideration paid by the Lessor prior to such modification, cancellation, or abrogation, including, but not limited to, bonuses, rentals and royalties.

Applicant: AUDUBON OIL AND GAS CORPORATION

Bidder	Cash Payment	Price/ Acre	Rental	Oil	Gas	Other



TRACT 42544 - Bossier Parish, Louisiana

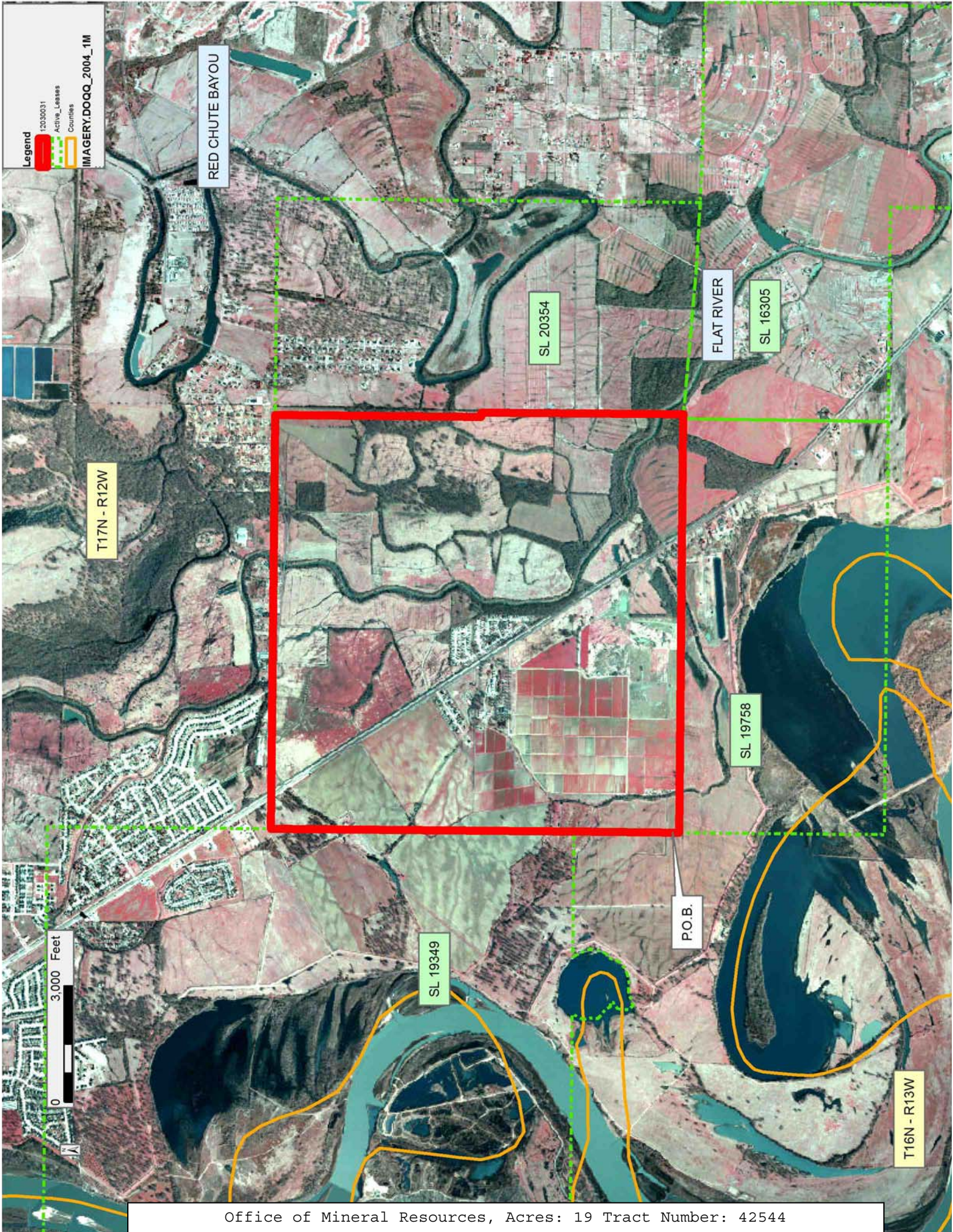
All of the lands now or formerly constituting the beds and bottoms of all water bodies of every nature and description as to which title is vested in the State of Louisiana, together with all islands arising therein and other lands formed by accretion or by reliction, where allowed by law, excepting tax adjudicated lands, and not presently under mineral lease on March 14, 2012, situated in Bossier Parish, Louisiana, and more particularly described as follows: Beginning at the Northwest corner of State Lease No. 19758 having Coordinates of X = 1,645,728.17 and Y = 636,082.80; thence North 2,717.20 feet to the Southeast corner of State Lease No. 19349 having Coordinates of X = 1,645,728.17 and Y = 638,800.00; thence North 7,800.00 feet along the East boundary of said State Lease No. 19349 to a point having Coordinates of X = 1,645,728.17 and Y = 646,600.00; thence East 10,668.53 feet to the Northwest corner of State Lease No. 20354, as amended, having Coordinates of X = 1,656,396.70 and Y = 646,600.00; thence along the boundary of said State Lease No. 20354 the following courses: South 5,310.35 feet to a point having Coordinates of X = 1,656,396.70 and Y = 641,289.65; South 84 degrees 23 minutes 07 seconds East 112.84 feet to a point having Coordinates of X = 1,656,509.00 and Y = 641,278.61 and South 00 degrees 02 minutes 26 seconds East 5,199.53 feet to its Southwest corner, said to be a point on the North boundary of State Lease No. 16305, having Coordinates of X = 1,656,512.69 and Y = 636,079.08; thence Westerly approximately 117 feet along the North boundary of said State Lease No. 16305 to its Northwest corner, also being the Northeast corner of said State Lease No. 19758; thence Westerly approximately 10,669 feet along the North boundary of said State Lease No. 19758 to the point of beginning, **LESS AND EXCEPT** that portion, if any, of State Lease No. 16305, State Lease No. 19349, State Lease No. 19758, and State Lease No. 20354, as amended, which may lie within the above described tract, (This tract includes only waterbottoms claimed and owned by the state and specifically excludes any land which the state may claim or own and to which the mineral rights are vested in the state), containing approximately **19 acres**, all as more particularly outlined on a plat on file in the Office of Mineral Resources, Department of Natural Resources. All bearings, distances and coordinates are based on Louisiana Coordinate System of 1927, (North or South Zone), where applicable.

NOTE: The above description of the Tract nominated for lease has been provided and corrected, where required, exclusively by the nomination party. Any mineral lease selected from this Tract and awarded by the Louisiana State Mineral and Energy Board shall be without warranty of any kind, either express, implied, or statutory, including, but not limited to, the implied warranties of merchantability and fitness for a particular purpose. Should the mineral lease awarded by the Louisiana State Mineral and Energy Board be subsequently modified, cancelled or abrogated due to the existence of conflicting leases, operating agreements, private claims or other future obligations or conditions which may affect all or any portion of the leased Tract, it shall not relieve the Lessee of the obligation to pay any bonus due thereon to the Louisiana State Mineral and

Energy Board, nor shall the Louisiana State Mineral and Energy Board be obligated to refund any consideration paid by the Lessor prior to such modification, cancellation, or abrogation, including, but not limited to, bonuses, rentals and royalties.

Applicant: MUSTANG EXPLORATION, LLC

Bidder	Cash Payment	Price/ Acre	Rental	Oil	Gas	Other



TRACT 42545 - Lasalle Parish, Louisiana

All of the lands now or formerly constituting the beds and bottoms of all water bodies of every nature and description as to which title is vested in the State of Louisiana, together with all islands arising therein and other lands formed by accretion or by reliction, where allowed by law, excepting tax adjudicated lands, and not presently under mineral lease on March 14, 2012, situated in Lasalle Parish, Louisiana, and more particularly described as follows: Beginning at a point having Coordinates of X = 2,128,870.25 and Y = 318,120.00; thence East 3,500.00 feet to a point having Coordinates of X = 2,132,370.25 and Y = 318,120.00; thence North 2,640.00 feet to a point having Coordinates of X = 2,132,370.25 and Y = 320,760.00; thence East 3,192.22 feet to a point having Coordinates of X = 2,135,562.47 and Y = 320,760.00; thence Southwesterly approximately 1,114 feet to the Northeast corner of State Lease No. 14617; thence Westerly and Southerly along the boundary of said State Lease No. 14617 to its Southeast corner; thence Southwesterly approximately 3,889 feet to a point having Coordinates of X = 2,130,862.40 and Y = 315,743.39; thence South 00 degrees 15 minutes 56 seconds West 2,623.42 feet to a point having Coordinates of X = 2,130,850.25 and Y = 313,120.00; thence West 1,980.00 feet to a point having Coordinates of X = 2,128,870.25 and Y = 313,120.00; thence North 5,000.00 feet to the point of beginning, **LESS AND EXCEPT** any portion of State Lease No. 14617 that falls within the above described tract, containing approximately **378 acres**, all as more particularly outlined on a plat on file in the Office of Mineral Resources, Department of Natural Resources. All bearings, distances and coordinates are based on Louisiana Coordinate System of 1927, (North or South Zone), where applicable.

NOTE: The above description of the Tract nominated for lease has been provided and corrected, where required, exclusively by the nomination party. Any mineral lease selected from this Tract and awarded by the Louisiana State Mineral and Energy Board shall be without warranty of any kind, either express, implied, or statutory, including, but not limited to, the implied warranties of merchantability and fitness for a particular purpose. Should the mineral lease awarded by the Louisiana State Mineral and Energy Board be subsequently modified, cancelled or abrogated due to the existence of conflicting leases, operating agreements, private claims or other future obligations or conditions which may affect all or any portion of the leased Tract, it shall not relieve the Lessee of the obligation to pay any bonus due thereon to the Louisiana State Mineral and Energy Board, nor shall the Louisiana State Mineral and Energy Board be obligated to refund any consideration paid by the Lessor prior to such modification, cancellation, or abrogation, including, but not limited to, bonuses, rentals and royalties.

Applicant: LESLIE M.COOPER

Bidder	Cash Payment	Price/ Acre	Rental	Oil	Gas	Other

Legend

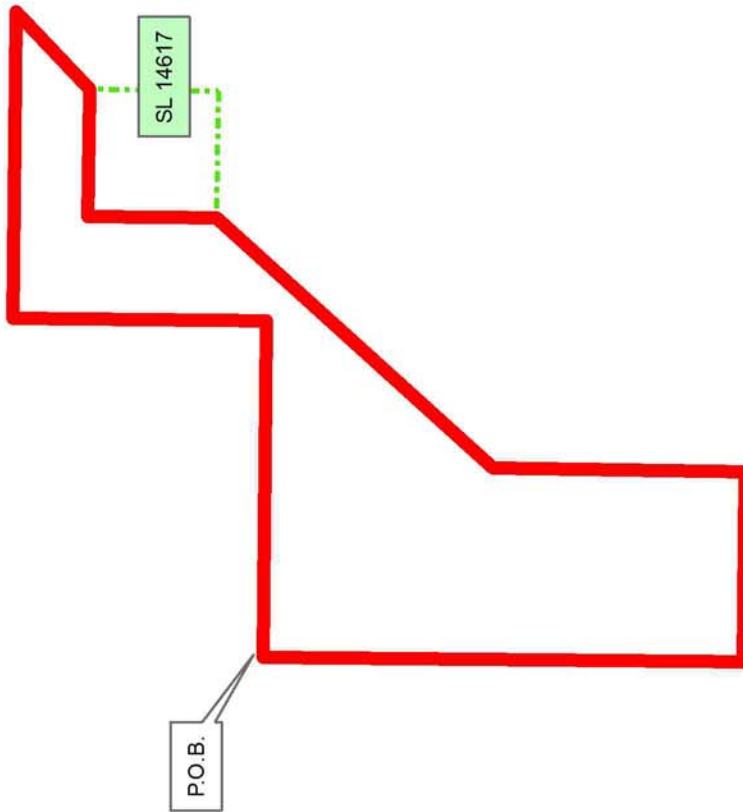
12030032

Active_Leases



LA SALLE PARISH

CATAHOULA LAKE



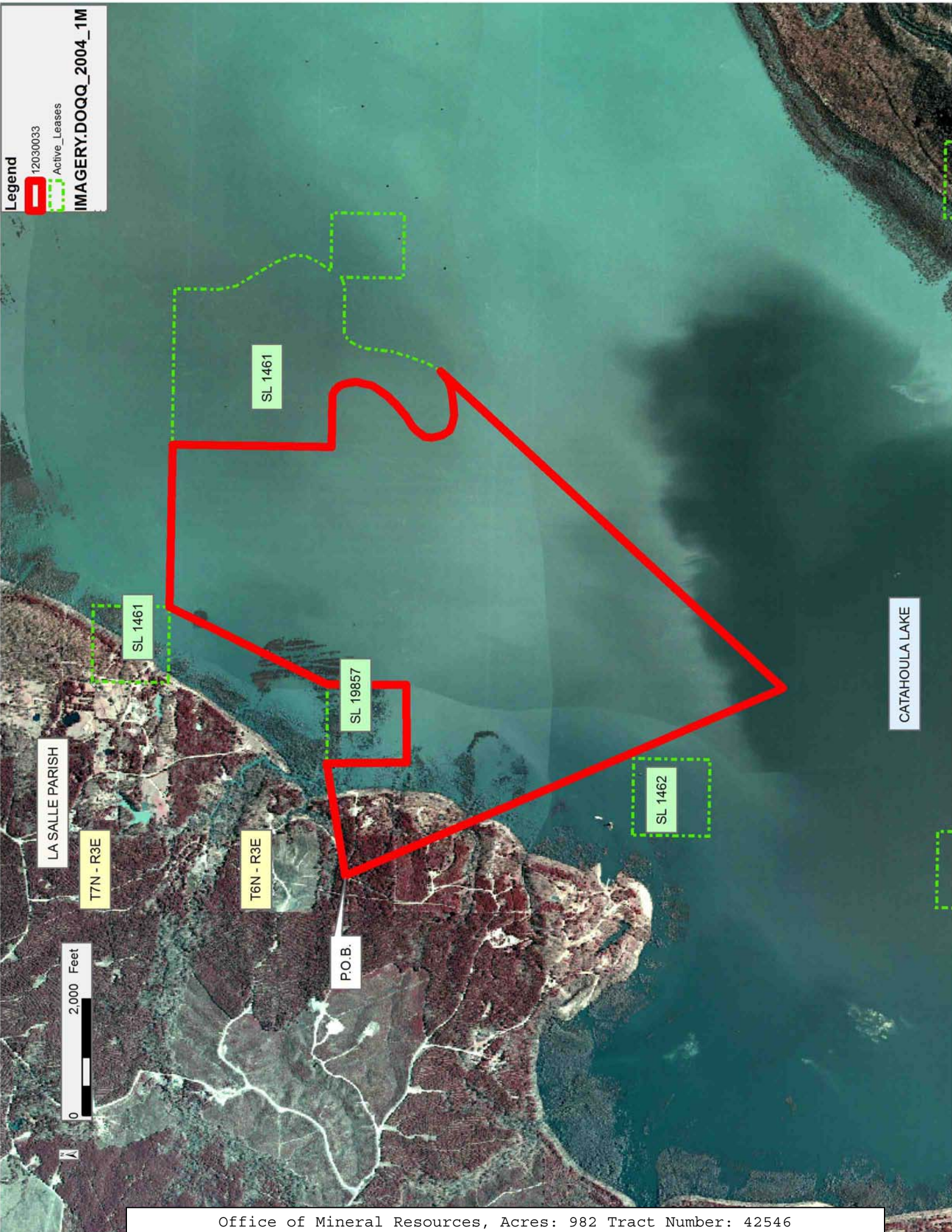
TRACT 42546 - Lasalle Parish, Louisiana

All of the lands now or formerly constituting the beds and bottoms of all water bodies of every nature and description as to which title is vested in the State of Louisiana, together with all islands arising therein and other lands formed by accretion or by reliction, where allowed by law, excepting tax adjudicated lands, and not presently under mineral lease on March 14, 2012, situated in Lasalle Parish, Louisiana, and more particularly described as follows: Beginning at a point having Coordinates of X = 2,111,638.80 and Y = 312,690.47; thence Northeasterly approximately 1,953 feet to the Northwest corner of State Lease No. 19857, as amended; thence southerly, easterly and northerly along the boundary of said State Lease No. 19857 to its Northeast corner; thence Northeasterly approximately 3,009 feet to the Southeast corner of the most northern retained tract of State Lease No. 1461, as amended; thence Easterly approximately 992 feet to a point having Coordinates of X = 2,117,205.90 and Y = 315,738.70; thence continue Easterly approximately 1,794 feet to the Northwest corner of the Northern retained tract of said State Lease No. 1461; thence along the boundary of said State Lease No. 1461 the following courses: Southerly, Easterly, Southerly, Southwesterly, Southeasterly and Northeasterly to a point of intersection with a line bearing of North 42 degrees 13 minutes 20 seconds East; thence South 42 degrees 13 minutes 20 seconds West approximately 8,000 feet to a point; thence North 23 degrees 46 minutes 32 seconds West approximately 8,165 feet to the point of beginning, **LESS AND EXCEPT** any portions of State Lease No. 1461 and State Lease No. 19857 that falls within the above described tract, containing approximately **982 acres**, all as more particularly outlined on a plat on file in the Office of Mineral Resources, Department of Natural Resources. All bearings, distances and coordinates are based on Louisiana Coordinate System of 1927, (North or South Zone), where applicable.

NOTE: The above description of the Tract nominated for lease has been provided and corrected, where required, exclusively by the nomination party. Any mineral lease selected from this Tract and awarded by the Louisiana State Mineral and Energy Board shall be without warranty of any kind, either express, implied, or statutory, including, but not limited to, the implied warranties of merchantability and fitness for a particular purpose. Should the mineral lease awarded by the Louisiana State Mineral and Energy Board be subsequently modified, cancelled or abrogated due to the existence of conflicting leases, operating agreements, private claims or other future obligations or conditions which may affect all or any portion of the leased Tract, it shall not relieve the Lessee of the obligation to pay any bonus due thereon to the Louisiana State Mineral and Energy Board, nor shall the Louisiana State Mineral and Energy Board be obligated to refund any consideration paid by the Lessor prior to such modification, cancellation, or abrogation, including, but not limited to, bonuses, rentals and royalties.

Applicant: LESLIE M.COOPER

Bidder	Cash Payment	Price/ Acre	Rental	Oil	Gas	Other



TRACT 42547 - Lasalle Parish, Louisiana

All of the lands now or formerly constituting the beds and bottoms of all water bodies of every nature and description as to which title is vested in the State of Louisiana, together with all islands arising therein and other lands formed by accretion or by reliction, where allowed by law, excepting tax adjudicated lands, and not presently under mineral lease on March 14, 2012, situated in Lasalle Parish, Louisiana, and more particularly described as follows: Beginning at a point having Coordinates of X = 2,105,800.00 and Y = 301,310.00; thence Northerly approximately 3,866 feet to the Southeast corner of School Indemnity Lands being Lot 4, Section 10, Township 6 South, Range 3 East, LaSalle Parish, Louisiana; thence Northeasterly, Easterly, Northerly and Westerly along the boundary of said Lot 4 to its Northwest corner; thence Northerly approximately 3,814 feet to a point having Coordinates of X = 2,105,645.88 and Y = 310,303.26; thence Southeasterly approximately 5,576 feet to the Northeast corner of western retained tract of State Lease No. 1462, as amended; thence westerly, southerly and easterly along the boundary of said State Lease No. 1462 to its Southeast corner; thence Southeasterly approximately 3,092 feet to the most north Northwest corner of the southern retained tract of State Lease No. 1462, as amended; thence Southerly, Westerly, Southerly and Westerly to its most south Northwest corner; thence continue Westerly approximately 2,770 feet to the Northeast corner of State Lease No. 17313 and the Southeast corner of said State Lease No. 16826 having Coordinates of X = 2,105,800.00 and Y = 299,990.00; thence North 1,320.00 feet along the east boundary of said State Lease No. 16826 to the point of beginning, **LESS AND EXCEPT** any portion of State Lease No. 1462 that falls within the above described tract, containing approximately **698 acres**, all as more particularly outlined on a plat on file in the Office of Mineral Resources, Department of Natural Resources. All bearings, distances and coordinates are based on Louisiana Coordinate System of 1927, (North or South Zone), where applicable.

NOTE: The above description of the Tract nominated for lease has been provided and corrected, where required, exclusively by the nomination party. Any mineral lease selected from this Tract and awarded by the Louisiana State Mineral and Energy Board shall be without warranty of any kind, either express, implied, or statutory, including, but not limited to, the implied warranties of merchantability and fitness for a particular purpose. Should the mineral lease awarded by the Louisiana State Mineral and Energy Board be subsequently modified, cancelled or abrogated due to the existence of conflicting leases, operating agreements, private claims or other future obligations or conditions which may affect all or any portion of the leased Tract, it shall not relieve the Lessee of the obligation to pay any bonus due thereon to the Louisiana State Mineral and Energy Board, nor shall the Louisiana State Mineral and Energy Board be obligated to refund any consideration paid by the Lessor prior to such modification, cancellation, or abrogation, including, but not limited to, bonuses, rentals and royalties.

Applicant: LESLIE M.COOPER

Bidder	Cash Payment	Price/ Acre	Rental	Oil	Gas	Other

Legend

12030034

Active Leases

IMAGERY.DOQQ_2004_1M

LA SALLE PARISH

CATAHOULA LAKE

SL 1462

SL 1462

SL 1462

SL 1462

P.O.B.

SL 16826

SL 17313

T6N - R3E

0 2,000 Feet

TRACT 42548 - West Feliciana Parish, Louisiana

All of the lands now or formerly constituting the beds and bottoms of all water bodies of every nature and description as to which title is vested in the State of Louisiana, together with all islands arising therein and other lands formed by accretion or by reliction, where allowed by law, excepting tax adjudicated lands, and not presently under mineral lease on March 14, 2012, situated in West Feliciana Parish, Louisiana, and more particularly described as follows: Beginning at a point having Coordinates of X = 1,946,275.00 and Y = 848,200.00; thence East 13,000.00 feet to a point having Coordinates of X = 1,959,275.00 and Y = 848,200.00; thence South 18,000.00 feet to a point having Coordinates of X = 1,959,275.00 and Y = 830,200.00; thence West 13,000.00 feet to a point having Coordinates of X = 1,946,275.00 and Y = 830,200.00; thence North 18,000.00 feet to the point of beginning, (This tract includes only waterbottoms claimed and owned by the state and specifically excludes any land which the state or Wildlife and Fisheries may claim or own and to which the mineral rights are vested in them), containing approximately **36 acres**, all as more particularly outlined on a plat on file in the Office of Mineral Resources, Department of Natural Resources. All bearings, distances and coordinates are based on Louisiana Coordinate System of 1927, (North or South Zone), where applicable.

NOTE: The above description of the Tract nominated for lease has been provided and corrected, where required, exclusively by the nomination party. Any mineral lease selected from this Tract and awarded by the Louisiana State Mineral and Energy Board shall be without warranty of any kind, either express, implied, or statutory, including, but not limited to, the implied warranties of merchantability and fitness for a particular purpose. Should the mineral lease awarded by the Louisiana State Mineral and Energy Board be subsequently modified, cancelled or abrogated due to the existence of conflicting leases, operating agreements, private claims or other future obligations or conditions which may affect all or any portion of the leased Tract, it shall not relieve the Lessee of the obligation to pay any bonus due thereon to the Louisiana State Mineral and Energy Board, nor shall the Louisiana State Mineral and Energy Board be obligated to refund any consideration paid by the Lessor prior to such modification, cancellation, or abrogation, including, but not limited to, bonuses, rentals and royalties.

Applicant: THEOPHILUS OIL, GAS & LAND SERVICES, LLC

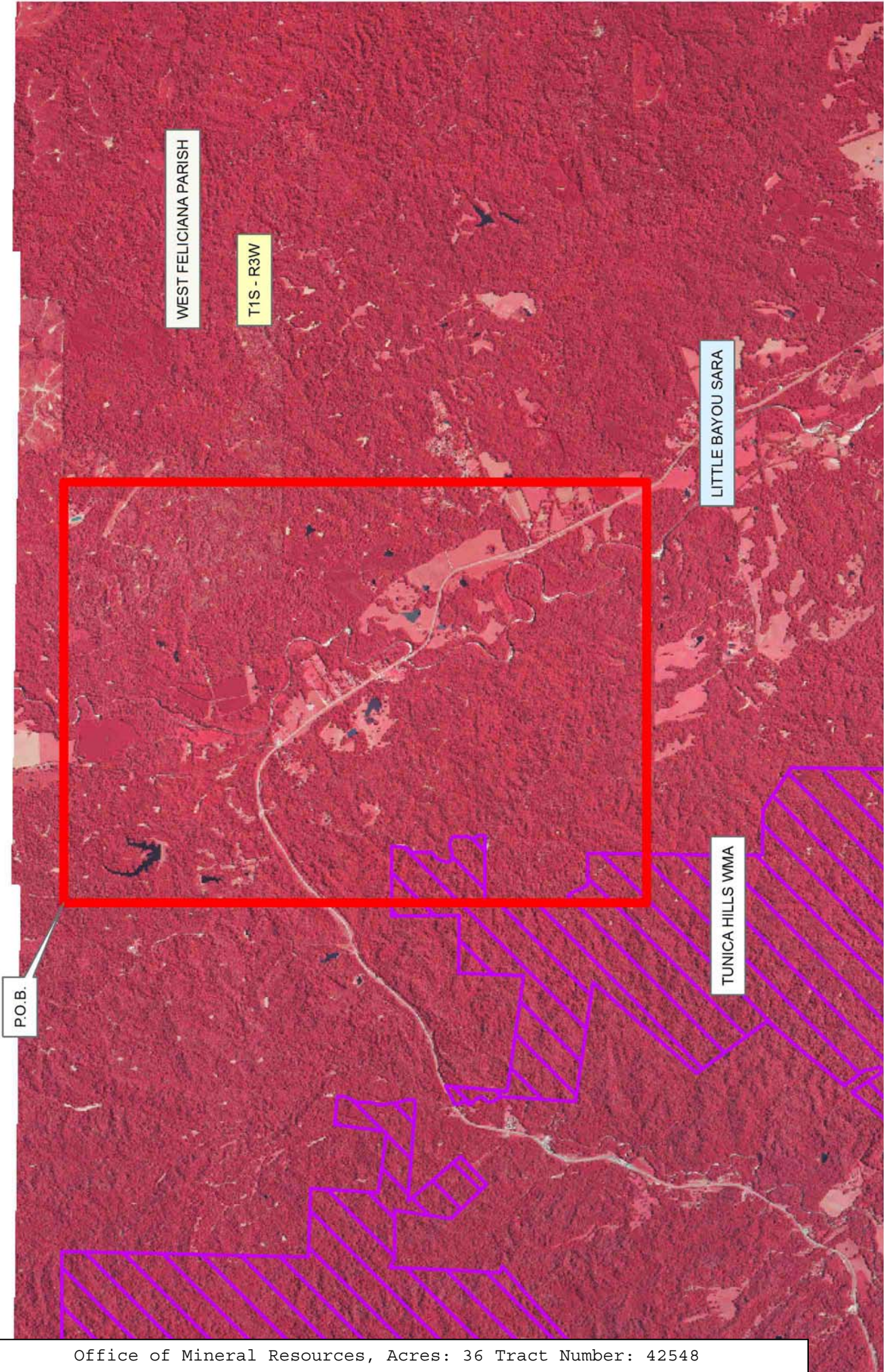
Bidder	Cash Payment	Price/ Acre	Rental	Oil	Gas	Other

Legend

12030052

Wildlife

IMAGERY.DOQQ_2008_1M_CIR



TRACT 42549 - West Feliciana Parish, Louisiana

All of the lands now or formerly constituting the beds and bottoms of all water bodies of every nature and description as to which title is vested in the State of Louisiana, together with all islands arising therein and other lands formed by accretion or by reliction, where allowed by law, excepting tax adjudicated lands, and not presently under mineral lease on March 14, 2012, situated in West Feliciana Parish, Louisiana, and more particularly described as follows: Beginning at a point having Coordinates of X = 1,971,275.00 and Y = 848,200.00; thence East 15,225.00 feet to a point having Coordinates of X = 1,986,500.00 and Y = 848,200.00; thence South 18,000.00 feet to a point having Coordinates of X = 1,986,500.00 and Y = 830,200.00; thence West 15,225.00 feet to a point having Coordinates of X = 1,971,275.00 and Y = 830,200.00; thence North 18,000.00 feet to the point of beginning, (This lease includes only waterbottoms claimed and owned by the state and specifically excludes any School Indemnity land located within the above described tract), containing approximately **40 acres**, all as more particularly outlined on a plat on file in the Office of Mineral Resources, Department of Natural Resources. All bearings, distances and coordinates are based on Louisiana Coordinate System of 1927, (North or South Zone), where applicable.

NOTE: The above description of the Tract nominated for lease has been provided and corrected, where required, exclusively by the nomination party. Any mineral lease selected from this Tract and awarded by the Louisiana State Mineral and Energy Board shall be without warranty of any kind, either express, implied, or statutory, including, but not limited to, the implied warranties of merchantability and fitness for a particular purpose. Should the mineral lease awarded by the Louisiana State Mineral and Energy Board be subsequently modified, cancelled or abrogated due to the existence of conflicting leases, operating agreements, private claims or other future obligations or conditions which may affect all or any portion of the leased Tract, it shall not relieve the Lessee of the obligation to pay any bonus due thereon to the Louisiana State Mineral and Energy Board, nor shall the Louisiana State Mineral and Energy Board be obligated to refund any consideration paid by the Lessor prior to such modification, cancellation, or abrogation, including, but not limited to, bonuses, rentals and royalties.

Bidder	Cash Payment	Price/ Acre	Rental	Oil	Gas	Other

Applicant: THEOPHILUS OIL, GAS & LAND SERVICES, LLC

Legend

12030049

Active_Leases

IMAGERY.DOQQ_2008_1M_CIR



P.O.B.

SL 20769

WEST FELICIANA PARISH

T1S - R3W

BAYOU SARA

TRACT 42550 - West Feliciana Parish, Louisiana

All of the lands now or formerly constituting the beds and bottoms of all water bodies of every nature and description as to which title is vested in the State of Louisiana, together with all islands arising therein and other lands formed by accretion or by reliction, where allowed by law, excepting tax adjudicated lands, and not presently under mineral lease on March 14, 2012, situated in West Feliciana Parish, Louisiana, and more particularly described as follows: Beginning at a point having Coordinates of X = 1,953,275.00 and Y = 830,200.00; thence East 18,000.00 feet to a point having Coordinates of X = 1,971,275.00 and Y = 830,200.00; thence South 13,900.00 feet to a point having Coordinates of X = 1,971,275.00 and Y = 816,300.00; thence West 18,000.00 feet to a point having Coordinates of X = 1,953,275.00 and Y = 816,300.00; thence North 13,900.00 feet to the point of beginning, containing approximately **29 acres**, all as more particularly outlined on a plat on file in the Office of Mineral Resources, Department of Natural Resources. All bearings, distances and coordinates are based on Louisiana Coordinate System of 1927, (North or South Zone), where applicable.

NOTE: The above description of the Tract nominated for lease has been provided and corrected, where required, exclusively by the nomination party. Any mineral lease selected from this Tract and awarded by the Louisiana State Mineral and Energy Board shall be without warranty of any kind, either express, implied, or statutory, including, but not limited to, the implied warranties of merchantability and fitness for a particular purpose. Should the mineral lease awarded by the Louisiana State Mineral and Energy Board be subsequently modified, cancelled or abrogated due to the existence of conflicting leases, operating agreements, private claims or other future obligations or conditions which may affect all or any portion of the leased Tract, it shall not relieve the Lessee of the obligation to pay any bonus due thereon to the Louisiana State Mineral and Energy Board, nor shall the Louisiana State Mineral and Energy Board be obligated to refund any consideration paid by the Lessor prior to such modification, cancellation, or abrogation, including, but not limited to, bonuses, rentals and royalties.

Applicant: THEOPHILUS OIL, GAS & LAND SERVICES, LLC

Bidder	Cash Payment	Price/ Acre	Rental	Oil	Gas	Other

Legend

12030051

Counties

IMAGERY.DOQQ_2008_1M_CIR

