

TRACT 42551 - West Feliciana Parish, Louisiana

All of the lands now or formerly constituting the beds and bottoms of all water bodies of every nature and description as to which title is vested in the State of Louisiana, together with all islands arising therein and other lands formed by accretion or by reliction, where allowed by law, excepting tax adjudicated lands, and not presently under mineral lease on March 14, 2012, situated in West Feliciana Parish, Louisiana, and more particularly described as follows: Beginning at a point having Coordinates of X = 1,971,275.00 and Y = 830,200.00; thence East 15,225.00 feet to a point having Coordinates of X = 1,986,500.00 and Y = 830,200.00; thence South 13,900.00 feet to a point having Coordinates of X = 1,986,500.00 and Y = 816,300.00; thence West 15,225.00 feet to a point having Coordinates of X = 1,971,275.00 and Y = 816,300.00; thence North 13,900.00 feet to the point of beginning, containing approximately **39 acres**, all as more particularly outlined on a plat on file in the Office of Mineral Resources, Department of Natural Resources. All bearings, distances and coordinates are based on Louisiana Coordinate System of 1927, (North or South Zone), where applicable.

NOTE: The above description of the Tract nominated for lease has been provided and corrected, where required, exclusively by the nomination party. Any mineral lease selected from this Tract and awarded by the Louisiana State Mineral and Energy Board shall be without warranty of any kind, either express, implied, or statutory, including, but not limited to, the implied warranties of merchantability and fitness for a particular purpose. Should the mineral lease awarded by the Louisiana State Mineral and Energy Board be subsequently modified, cancelled or abrogated due to the existence of conflicting leases, operating agreements, private claims or other future obligations or conditions which may affect all or any portion of the leased Tract, it shall not relieve the Lessee of the obligation to pay any bonus due thereon to the Louisiana State Mineral and Energy Board, nor shall the Louisiana State Mineral and Energy Board be obligated to refund any consideration paid by the Lessor prior to such modification, cancellation, or abrogation, including, but not limited to, bonuses, rentals and royalties.

Applicant: THEOPHILUS OIL, GAS & LAND SERVICES, LLC

Bidder	Cash Payment	Price/ Acre	Rental	Oil	Gas	Other

Legend

12030050

IMAGERY.DOQQ_2008_1M_CIR

WEST FELICIANA PARISH

T1S - R3W

BAYOU SARA

T2S - R3W

P.O.B.

0 4,000 Feet

TRACT 42552 - Vermilion Parish, Louisiana

All of the lands now or formerly constituting the beds and bottoms of all water bodies of every nature and description as to which title is vested in the State of Louisiana, together with all islands arising therein and other lands formed by accretion or by reliction, where allowed by law, excepting tax adjudicated lands, and not presently under mineral lease on March 14, 2012, situated in Vermilion Parish, Louisiana, and more particularly described as follows: Beginning at a point having Coordinates of X = 1,706,475.76 and Y = 371,764.53; thence South 89 degrees 55 minutes 16 seconds East 5,380.11 feet to a point having Coordinates of X = 1,711,855.86 and Y = 371,757.13; thence South 89 degrees 29 minutes 43 seconds East 1,329.14 feet to a point having Coordinates of X = 1,713,184.95 and Y = 371,745.42; thence South 11 degrees 30 minutes 53 seconds East 7,952.91 feet to a point having Coordinates of X = 1,714,772.52 and Y = 363,952.58; thence North 89 degrees 32 minutes 52 seconds West 1,328.88 feet to a point having Coordinates of X = 1,713,443.68 and Y = 363,963.07; thence South 00 degrees 36 minutes 23 seconds West 5,277.36 feet to a point having Coordinates of X = 1,713,387.82 and Y = 358,686.01; thence North 89 degrees 33 minutes 34 seconds West 5,751.92 feet to a point having Coordinates of X = 1,707,636.07 and Y = 358,730.24; thence North 00 degrees 33 minutes 34 seconds East 5,278.52 feet to a point having Coordinates of X = 1,707,687.61 and Y = 364,008.51; thence North 08 degrees 52 minutes 50 seconds West 7,850.12 feet to the Point of Beginning, containing approximately **21 acres**, all as more particularly outlined on a plat on file in the Office of Mineral Resources, Department of Natural Resources. All bearings, distances and coordinates are based on Louisiana Coordinate System of 1927, (North or South Zone), where applicable.

NOTE: The above description of the Tract nominated for lease has been provided and corrected, where required, exclusively by the nomination party. Any mineral lease selected from this Tract and awarded by the Louisiana State Mineral and Energy Board shall be without warranty of any kind, either express, implied, or statutory, including, but not limited to, the implied warranties of merchantability and fitness for a particular purpose. Should the mineral lease awarded by the Louisiana State Mineral and Energy Board be subsequently modified, cancelled or abrogated due to the existence of conflicting leases, operating agreements, private claims or other future obligations or conditions which may affect all or any portion of the leased Tract, it shall not relieve the Lessee of the obligation to pay any bonus due thereon to the Louisiana State Mineral and Energy Board, nor shall the Louisiana State Mineral and Energy Board be obligated to refund any consideration paid by the Lessor prior to such modification, cancellation, or abrogation, including, but not limited to, bonuses, rentals and royalties.

NOTE: The State of Louisiana does hereby reserve, and this lease shall be subject to, the imprescriptible right of surface use in the nature of a servitude in favor of the Department of Natural Resources, including its

Offices and Commissions, for the sole purpose of implementing, constructing, servicing and maintaining approved coastal zone management and/or restoration projects. Utilization of any and all rights derived under this lease by the mineral lessee, its agents, successors or assigns, shall not interfere with nor hinder the reasonable surface use by the Department of Natural Resources, its Offices or Commissions, as herein above reserved.

Applicant: PATRICK L. DONOHUE PETROLEUM PROPERTIES, INC.

Bidder	Cash Payment	Price/ Acre	Rental	Oil	Gas	Other

Legend

12030002

IMAGERY.D00Q_2008_1M_CIR

0 3,000 Feet

VERMILION PARISH

T15S - R2E

BELLE ISLE BAYOU

P.O.B.

T16S - R2E

TRACT 42553 - Plaquemines Parish, Louisiana

All of the lands now or formerly constituting the beds and bottoms of all water bodies of every nature and description as to which title is vested in the State of Louisiana, together with all islands arising therein and other lands formed by accretion or by reliction, where allowed by law, excepting tax adjudicated lands, and not presently under mineral lease on March 14, 2012, situated in Plaquemines Parish, Louisiana, and more particularly described as follows: Beginning at a point having Coordinates of X = 2,516,600.00 and Y = 348,350.00; thence South 6,450.00 feet to a point having Coordinates of X = 2,516,600.00 and Y = 341,900.00; thence West 15,059.44 feet to a point having Coordinates of X = 2,501,540.56 and Y = 341,900.00; thence Northerly approximately 2,040 feet to the Southeast corner of State Lease No. 1212, as amended; thence Northerly approximately 4,413 feet along the Eastern boundary of said State Lease No. 1212 to a point of intersection with an East-West line having a Coordinate of Y = 348,350.00; thence East approximately 15,216 feet along said line to the point of beginning, **LESS AND EXCEPT** that portion, if any, of State Lease No. 1212, as amended, that may lie within the above described tract, containing approximately **1,344 acres**, all as more particularly outlined on a plat on file in the Office of Mineral Resources, Department of Natural Resources. All bearings, distances and coordinates are based on Louisiana Coordinate System of 1927, (North or South Zone), where applicable.

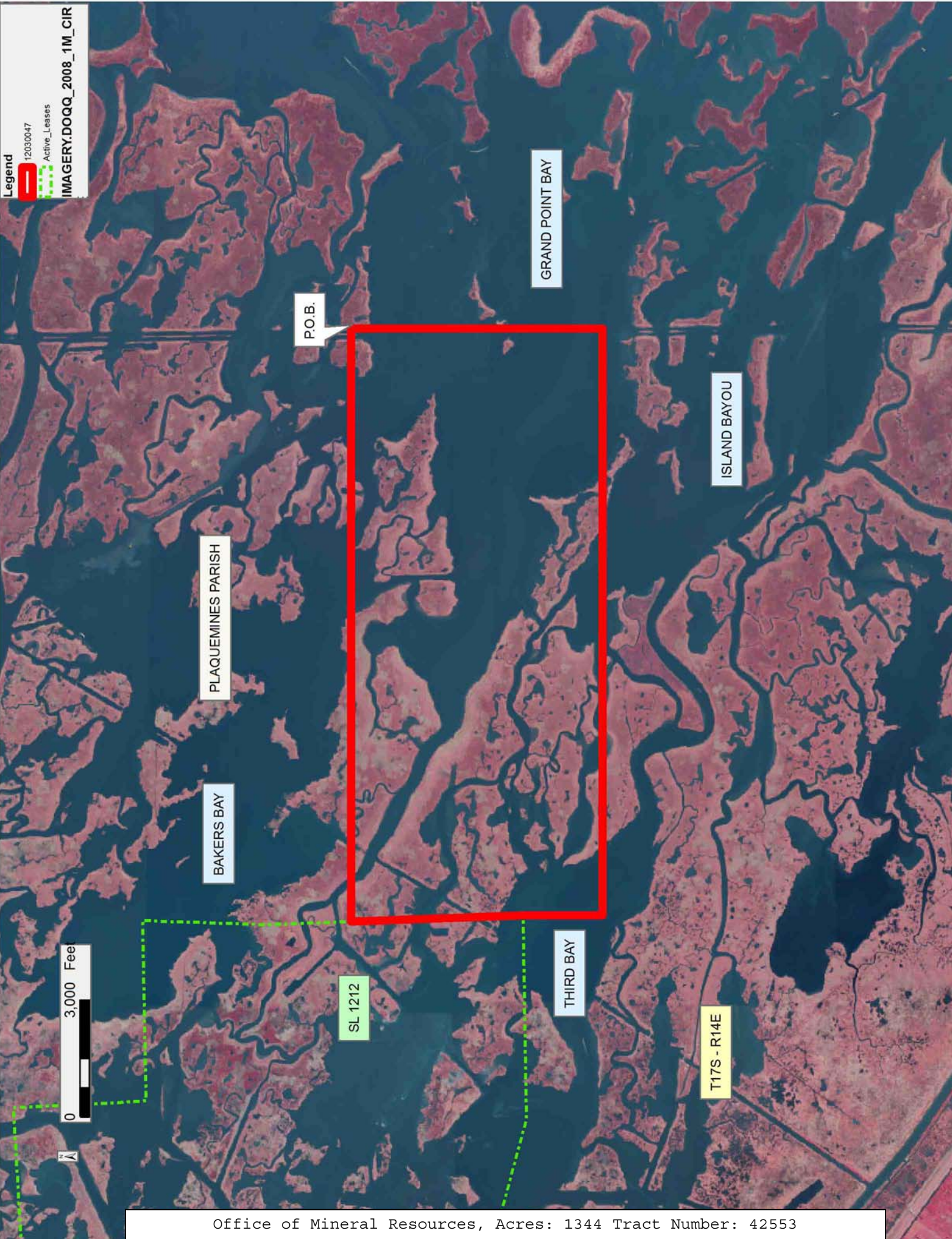
NOTE: The above description of the Tract nominated for lease has been provided and corrected, where required, exclusively by the nomination party. Any mineral lease selected from this Tract and awarded by the Louisiana State Mineral and Energy Board shall be without warranty of any kind, either express, implied, or statutory, including, but not limited to, the implied warranties of merchantability and fitness for a particular purpose. Should the mineral lease awarded by the Louisiana State Mineral and Energy Board be subsequently modified, cancelled or abrogated due to the existence of conflicting leases, operating agreements, private claims or other future obligations or conditions which may affect all or any portion of the leased Tract, it shall not relieve the Lessee of the obligation to pay any bonus due thereon to the Louisiana State Mineral and Energy Board, nor shall the Louisiana State Mineral and Energy Board be obligated to refund any consideration paid by the Lessor prior to such modification, cancellation, or abrogation, including, but not limited to, bonuses, rentals and royalties.

NOTE: The State of Louisiana does hereby reserve, and this lease shall be subject to, the imprescriptible right of surface use in the nature of a servitude in favor of the Department of Natural Resources, including its Offices and Commissions, for the sole purpose of implementing, constructing, servicing and maintaining approved coastal zone management and/or restoration projects. Utilization of any and all rights derived under this lease by the mineral lessee, its agents, successors or assigns, shall not interfere with nor hinder the reasonable surface use by the

Department of Natural Resources, its Offices or Commissions, as herein above reserved.

Applicant: GADWALL PETROLEUM PROPERTIES

Bidder	Cash Payment	Price/ Acre	Rental	Oil	Gas	Other



TRACT 42554 - Plaquemines Parish, Louisiana

All of the lands now or formerly constituting the beds and bottoms of all water bodies of every nature and description as to which title is vested in the State of Louisiana, together with all islands arising therein and other lands formed by accretion or by reliction, where allowed by law, excepting tax adjudicated lands, and not presently under mineral lease on March 14, 2012, situated in Plaquemines Parish, Louisiana, and more particularly described as follows: Beginning at a point having Coordinates of X = 2,516,600.00 and Y = 348,350.00; thence East 8,250.00 feet to a point having Coordinates of X = 2,524,850.00 and Y = 348,350.00; thence South 13,100.00 feet to a point having Coordinates of X = 2,524,850.00 and Y = 335,250.00; thence West 8,250.00 feet to a point having Coordinates of X = 2,516,600.00 and Y = 335,250.00; thence North 13,100.00 feet to the point of beginning, containing approximately **1,979 acres**, all as more particularly outlined on a plat on file in the Office of Mineral Resources, Department of Natural Resources. All bearings, distances and coordinates are based on Louisiana Coordinate System of 1927, (North or South Zone), where applicable.

NOTE: The above description of the Tract nominated for lease has been provided and corrected, where required, exclusively by the nomination party. Any mineral lease selected from this Tract and awarded by the Louisiana State Mineral and Energy Board shall be without warranty of any kind, either express, implied, or statutory, including, but not limited to, the implied warranties of merchantability and fitness for a particular purpose. Should the mineral lease awarded by the Louisiana State Mineral and Energy Board be subsequently modified, cancelled or abrogated due to the existence of conflicting leases, operating agreements, private claims or other future obligations or conditions which may affect all or any portion of the leased Tract, it shall not relieve the Lessee of the obligation to pay any bonus due thereon to the Louisiana State Mineral and Energy Board, nor shall the Louisiana State Mineral and Energy Board be obligated to refund any consideration paid by the Lessor prior to such modification, cancellation, or abrogation, including, but not limited to, bonuses, rentals and royalties.

NOTE: The State of Louisiana does hereby reserve, and this lease shall be subject to, the imprescriptible right of surface use in the nature of a servitude in favor of the Department of Natural Resources, including its Offices and Commissions, for the sole purpose of implementing, constructing, servicing and maintaining approved coastal zone management and/or restoration projects. Utilization of any and all rights derived under this lease by the mineral lessee, its agents, successors or assigns, shall not interfere with nor hinder the reasonable surface use by the Department of Natural Resources, its Offices or Commissions, as herein above reserved.

Applicant: GADWALL PETROLEUM PROPERTIES

Bidder	Cash Payment	Price/ Acre	Rental	Oil	Gas	Other

0 3,000 Feet



PLAQUEMINES PARISH

P.O.B.

GRAND POINT BAY

BAY GARDENE

BAY LAW

T17S - R15E



TRACT 42555 - Plaquemines Parish, Louisiana

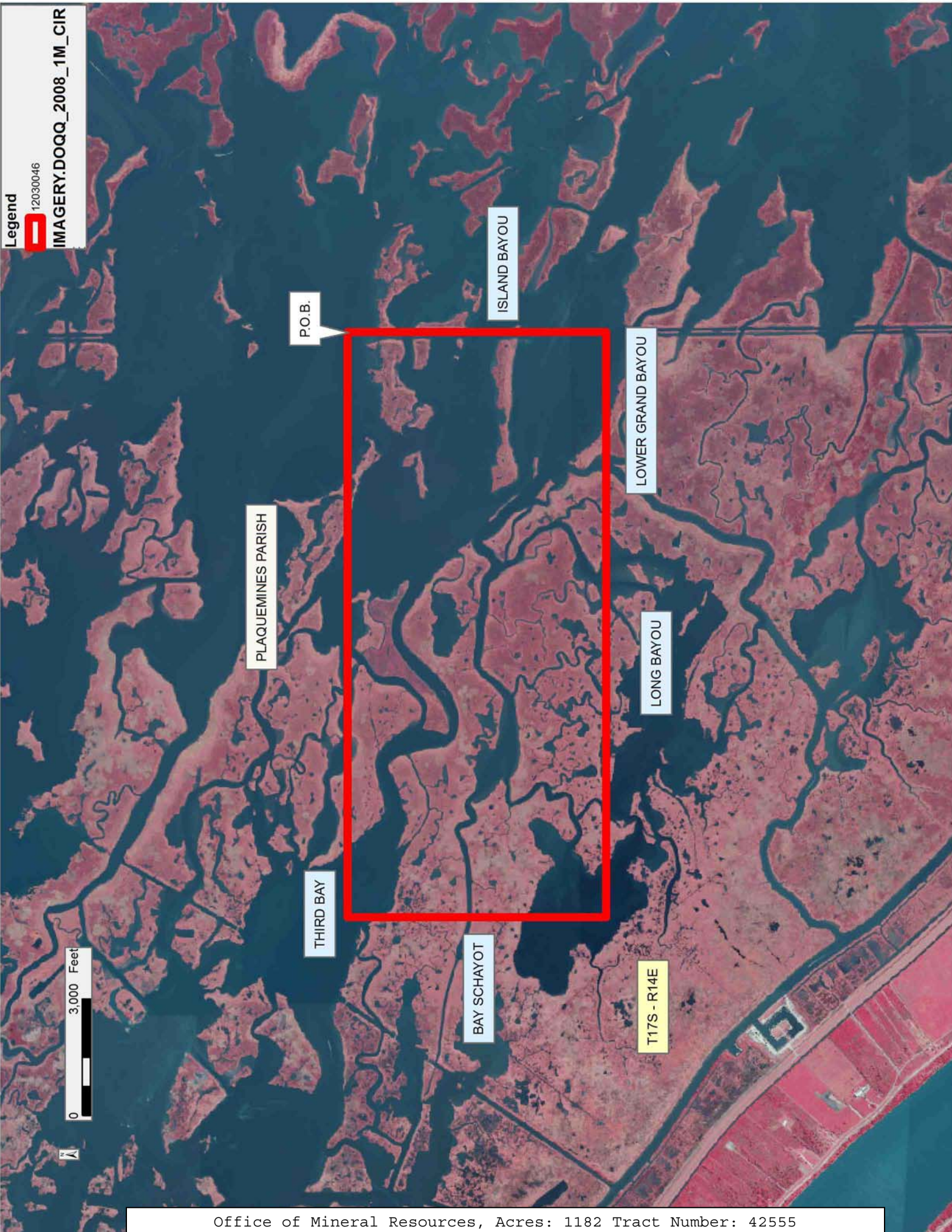
All of the lands now or formerly constituting the beds and bottoms of all water bodies of every nature and description as to which title is vested in the State of Louisiana, together with all islands arising therein and other lands formed by accretion or by reliction, where allowed by law, excepting tax adjudicated lands, and not presently under mineral lease on March 14, 2012, situated in Plaquemines Parish, Louisiana, and more particularly described as follows: Beginning at a point having Coordinates of X = 2,516,600.00 and Y = 341,900.00; thence South 6,650.00 feet to a point having Coordinates of X = 2,516,600.00 and Y = 335,250.00; thence West 15,059.44 feet to a point having Coordinates of X = 2,501,540.56 and Y = 335,250.00; thence North 6,650.00 feet to a point having Coordinates of X = 2,501,540.56 and Y = 341,900.00; thence East 15,059.44 feet to the point of beginning, containing approximately **1,182 acres**, all as more particularly outlined on a plat on file in the Office of Mineral Resources, Department of Natural Resources. All bearings, distances and coordinates are based on Louisiana Coordinate System of 1927, (North or South Zone), where applicable.

NOTE: The above description of the Tract nominated for lease has been provided and corrected, where required, exclusively by the nomination party. Any mineral lease selected from this Tract and awarded by the Louisiana State Mineral and Energy Board shall be without warranty of any kind, either express, implied, or statutory, including, but not limited to, the implied warranties of merchantability and fitness for a particular purpose. Should the mineral lease awarded by the Louisiana State Mineral and Energy Board be subsequently modified, cancelled or abrogated due to the existence of conflicting leases, operating agreements, private claims or other future obligations or conditions which may affect all or any portion of the leased Tract, it shall not relieve the Lessee of the obligation to pay any bonus due thereon to the Louisiana State Mineral and Energy Board, nor shall the Louisiana State Mineral and Energy Board be obligated to refund any consideration paid by the Lessor prior to such modification, cancellation, or abrogation, including, but not limited to, bonuses, rentals and royalties.

NOTE: The State of Louisiana does hereby reserve, and this lease shall be subject to, the imprescriptible right of surface use in the nature of a servitude in favor of the Department of Natural Resources, including its Offices and Commissions, for the sole purpose of implementing, constructing, servicing and maintaining approved coastal zone management and/or restoration projects. Utilization of any and all rights derived under this lease by the mineral lessee, its agents, successors or assigns, shall not interfere with nor hinder the reasonable surface use by the Department of Natural Resources, its Offices or Commissions, as herein above reserved.

Applicant: GADWALL PETROLEUM PROPERTIES

Bidder	Cash Payment	Price/ Acre	Rental	Oil	Gas	Other



TRACT 42556 - Lafourche and Terrebonne Parishes, Louisiana

All of the lands now or formerly constituting the beds and bottoms of all water bodies of every nature and description as to which title is vested in the State of Louisiana, together with all islands arising therein and other lands formed by accretion or by reliction, where allowed by law, excepting tax adjudicated lands, and not presently under mineral lease on March 14, 2012, situated in Lafourche and Terrebonne Parishes, Louisiana, and more particularly described as follows: Beginning at a point having Coordinates of X = 2,294,353.15 and Y = 206,743.11; thence North 79 degrees 11 minutes 51 seconds East 11,827.91 feet to the Northwest corner of a portion of State Lease No. 1480, as amended having Coordinates of X = 2,305,971.46 and Y = 208,959.96; thence South 01 degrees 00 minutes 00 seconds East 7,186.60 feet along the West boundary of said State Lease No. 1480 to its Southwest corner having Coordinates of X = 2,306,096.88 and Y = 201,774.45; thence South 475.00 feet to a point having Coordinates of X = 2,306,096.88 and Y = 201,299.45; thence Westerly approximately 7,670 feet to a point being the Northeast corner of State Lease No. 3278, as amended and State Lease No. 3723, as amended; thence Westerly approximately 4,225 feet along the North boundary of said State Lease No. 3278 and said State Lease No. 3723 to their Northwest corner; thence Northerly approximately 5,446 feet to the point of beginning, (This lease includes only waterbottoms claimed and owned by the state and specifically excludes any land which the state may claim or own and to which the mineral rights are vested in the state), containing approximately **1,758 acres**, all as more particularly outlined on a plat on file in the Office of Mineral Resources, Department of Natural Resources. All bearings, distances and coordinates are based on Louisiana Coordinate System of 1927, (North or South Zone), where applicable.

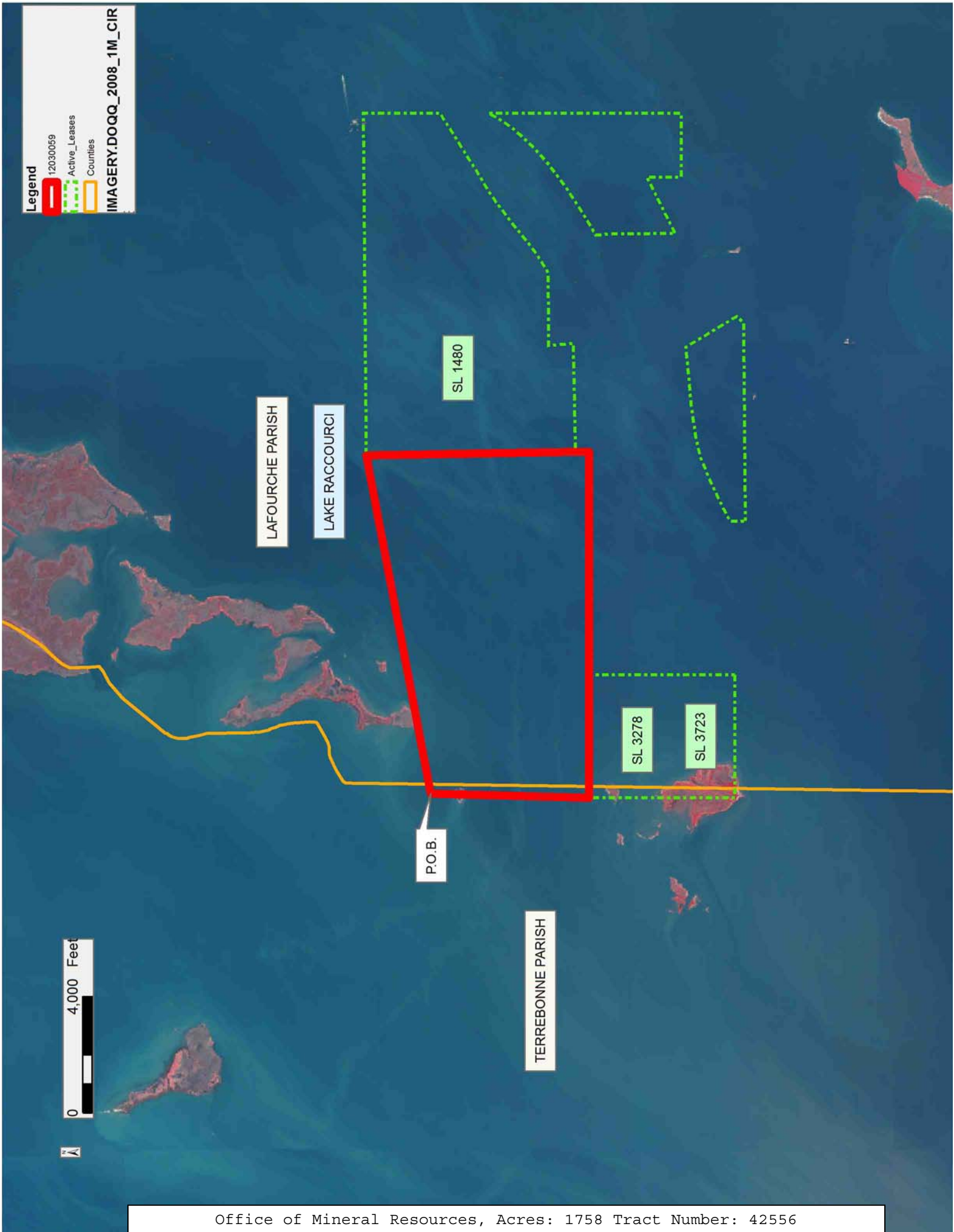
NOTE: The above description of the Tract nominated for lease has been provided and corrected, where required, exclusively by the nomination party. Any mineral lease selected from this Tract and awarded by the Louisiana State Mineral and Energy Board shall be without warranty of any kind, either express, implied, or statutory, including, but not limited to, the implied warranties of merchantability and fitness for a particular purpose. Should the mineral lease awarded by the Louisiana State Mineral and Energy Board be subsequently modified, cancelled or abrogated due to the existence of conflicting leases, operating agreements, private claims or other future obligations or conditions which may affect all or any portion of the leased Tract, it shall not relieve the Lessee of the obligation to pay any bonus due thereon to the Louisiana State Mineral and Energy Board, nor shall the Louisiana State Mineral and Energy Board be obligated to refund any consideration paid by the Lessor prior to such modification, cancellation, or abrogation, including, but not limited to, bonuses, rentals and royalties.

NOTE: The State of Louisiana does hereby reserve, and this lease shall be subject to, the imprescriptible right of surface use in the nature of a servitude in favor of the Department of Natural Resources, including its

Offices and Commissions, for the sole purpose of implementing, constructing, servicing and maintaining approved coastal zone management and/or restoration projects. Utilization of any and all rights derived under this lease by the mineral lessee, its agents, successors or assigns, shall not interfere with nor hinder the reasonable surface use by the Department of Natural Resources, its Offices or Commissions, as herein above reserved.

Applicant: THEOPHILUS OIL, GAS & LAND SERVICES, LLC

Bidder	Cash Payment	Price/ Acre	Rental	Oil	Gas	Other



TRACT 42557 - Terrebonne Parish, Louisiana

All of the lands now or formerly constituting the beds and bottoms of all water bodies of every nature and description as to which title is vested in the State of Louisiana, together with all islands arising therein and other lands formed by accretion or by reliction, where allowed by law, excepting tax adjudicated lands, and not presently under mineral lease on March 14, 2012, situated in Terrebonne Parish, Louisiana, and more particularly described as follows: Beginning at a Northeast corner of State Lease No. 199, as amended having Coordinates of X = 2,279,247.20 and Y = 203,860.80; thence North 79 degrees 11 minutes 51 seconds East 15,378.47 feet to a point having Coordinates of X = 2,294,353.15 and Y = 206,743.11; thence Southerly approximately 5,446 feet to a point being the Northwest corner of State Lease No. 3278, as amended and State Lease No. 3723, as amended; hence Westerly approximately 14,938 feet to a point on the East boundary of said State Lease No. 199 having Coordinates of X = 2,279,266.22 and Y = 201,262.94; thence along the East boundary of said State Lease No. 199 the following courses and distances: North 00 degrees 25 minutes 10 seconds West 748.97 feet to a corner having Coordinates of X = 2,279,260.73 and Y = 202,011.89, North 20 degrees 01 minutes 50 seconds East 288.31 feet to a corner having Coordinates of X = 2,279,359.49 and Y = 202,282.76, North 23 degrees 07 minutes 50 seconds East 250.20 feet to a corner having Coordinates of X = 2,279,457.77 and Y = 202,512.85, North 28 degrees 55 minutes 50 seconds East 224.40 feet to a corner having Coordinates of X = 2,279,566.32 and Y = 202,709.24, North 32 degrees 28 minutes 50 seconds East 202.50 feet to a corner having Coordinates of X = 2,279,675.07 and Y = 202,880.07, South 88 degrees 16 minutes 50 seconds West 220.10 feet to a corner having Coordinates of X = 2,279,455.07 and Y = 202,873.46, South 82 degrees 47 minutes 50 seconds West 202.05 feet to a corner having Coordinates of X = 2,279,254.61 and Y = 202,848.13 and North 00 degree 25 minutes 10 seconds West 1,012.70 feet to the point of beginning, containing approximately **1,390 acres**, all as more particularly outlined on a plat on file in the Office of Mineral Resources, Department of Natural Resources. All bearings, distances and coordinates are based on Louisiana Coordinate System of 1927, (North or South Zone), where applicable.

NOTE: The above description of the Tract nominated for lease has been provided and corrected, where required, exclusively by the nomination party. Any mineral lease selected from this Tract and awarded by the Louisiana State Mineral and Energy Board shall be without warranty of any kind, either express, implied, or statutory, including, but not limited to, the implied warranties of merchantability and fitness for a particular purpose. Should the mineral lease awarded by the Louisiana State Mineral and Energy Board be subsequently modified, cancelled or abrogated due to the existence of conflicting leases, operating agreements, private claims or other future obligations or conditions which may affect all or any portion of the leased Tract, it shall not relieve the Lessee of the obligation to pay any bonus due thereon to the Louisiana State Mineral and Energy Board, nor shall the Louisiana State Mineral and Energy Board be

obligated to refund any consideration paid by the Lessor prior to such modification, cancellation, or abrogation, including, but not limited to, bonuses, rentals and royalties.

NOTE: The State of Louisiana does hereby reserve, and this lease shall be subject to, the imprescriptible right of surface use in the nature of a servitude in favor of the Department of Natural Resources, including its Offices and Commissions, for the sole purpose of implementing, constructing, servicing and maintaining approved coastal zone management and/or restoration projects. Utilization of any and all rights derived under this lease by the mineral lessee, its agents, successors or assigns, shall not interfere with nor hinder the reasonable surface use by the Department of Natural Resources, its Offices or Commissions, as herein above reserved.

Applicant: THEOPHILUS OIL, GAS & LAND SERVICES, LLC

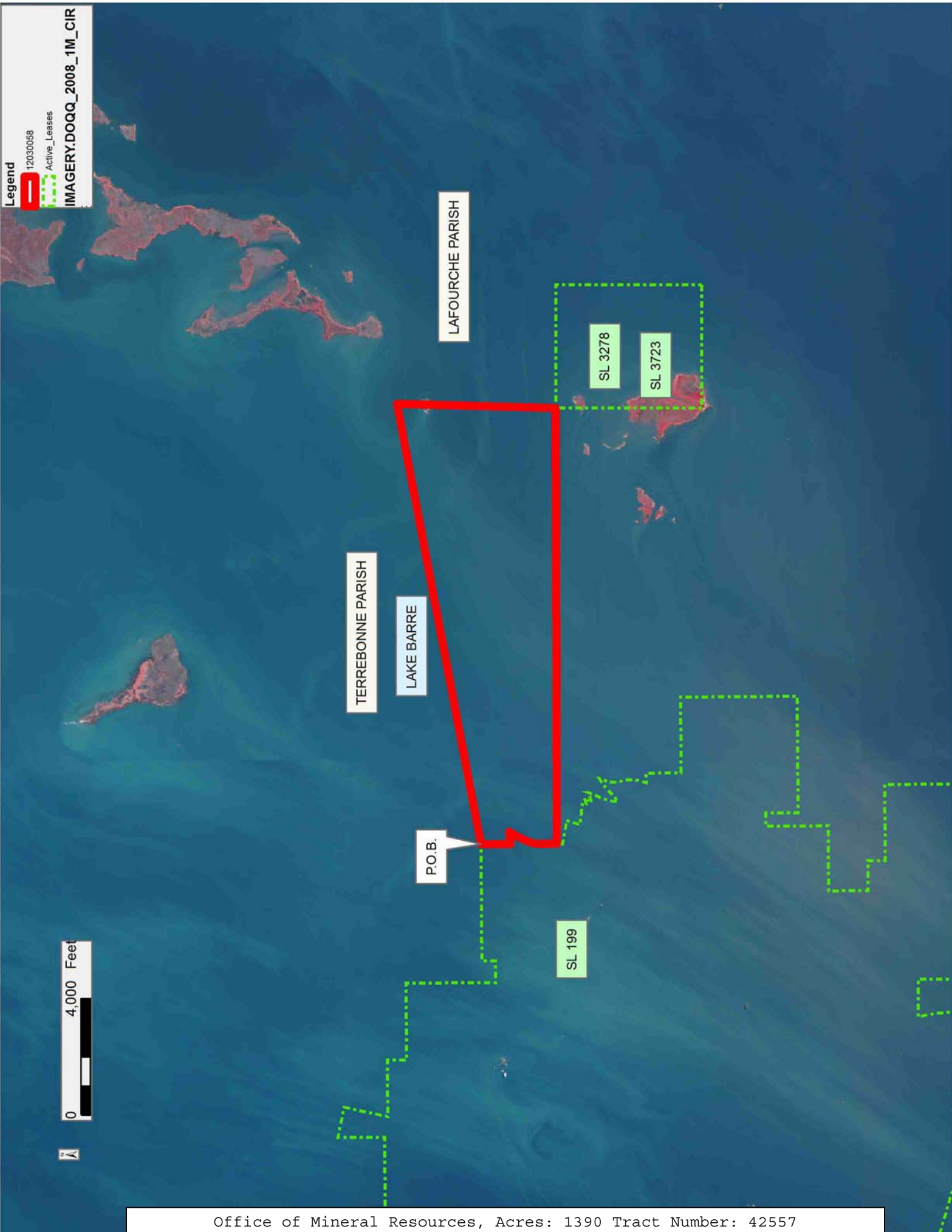
Bidder	Cash Payment	Price/ Acre	Rental	Oil	Gas	Other

Legend

12030058

Active_Leases

IMAGERY.DOQQ_2008_1M_CIR



TRACT 42558 - Lafourche Parish, Louisiana

All of the lands now or formerly constituting the beds and bottoms of all water bodies of every nature and description as to which title is vested in the State of Louisiana, together with all islands arising therein and other lands formed by accretion or by reliction, where allowed by law, excepting tax adjudicated lands, and not presently under mineral lease on March 14, 2012, situated in Lafourche Parish, Louisiana, and more particularly described as follows: Beginning at the Southwest corner of the North portion of State Lease No. 1480, as amended having Coordinates of $X = 2,306,096.88$ and $Y = 201,774.45$; thence along the Southerly boundary the North portion of said State Lease No. 1480 the following courses and distances: North 88 degrees 50 minutes 07 seconds East 3,735.38 feet, North 05 degrees 13 minutes 26 seconds West 851.15 feet, North 89 degrees 38 minutes 36 seconds East 2,501.08 feet, North 60 degrees 21 minutes 42 seconds East 316.37 feet, North 56 degrees 35 minutes 32 seconds East 563.00 feet, North 53 degrees 31 minutes 51 seconds East 286.00 feet, North 50 degrees 47 minutes 34 seconds East 980.80 feet, North 52 degrees 52 minutes 09 seconds East 878.00 feet, North 56 degrees 33 minutes 36 seconds East 635.10 feet, North 59 degrees 18 minutes 01 seconds East 744.30 feet, North 57 degrees 30 minutes 24 seconds East 1,991.80 feet, North 63 degrees 26 minutes 06 seconds East 219.34 feet to a point being on the Western boundary of State Lease No. 14589, as amended; thence along the Western boundary of said State Lease No. 14589 the following courses and distances: North 63 degrees 26 minutes 06 seconds East 853.97 feet, North 65 degrees 49 minutes 15 seconds East 537.10 feet, South 34 degrees 01 minutes 10 seconds West 482.60 feet, South 28 degrees 36 minutes 38 seconds West 626.50 feet, South 27 degrees 48 minutes 59 seconds West 1,465.34 feet to a point being the Northernmost corner of the East portion of said State Lease No. 1480, thence along the boundaries of the East portion of said State Lease No. 1480 the following courses and distances: South 27 degrees 48 minutes 59 seconds West 377.66 feet, South 33 degrees 23 minutes 19 seconds West 527.00 feet, South 41 degrees 59 minutes 14 seconds West 403.60 feet, South 43 degrees 13 minutes 43 seconds West 686.20 feet, South 48 degrees 21 minutes 59 seconds West 722.50 feet, South 52 degrees 47 minutes 01 seconds West 992.00 feet, South 57 degrees 07 minutes 26 seconds West 976.40 feet, South 58 degrees 02 minutes 09 seconds West 516.60 feet, South 60 degrees 12 minutes 18 seconds West 289.10 feet, South 61 degrees 00 minutes 04 seconds West 152.35 feet, South 03 degrees 41 minutes 29 seconds East 454.47 feet, South 00 degrees 29 minutes 42 seconds East 2,283.26 feet, North 63 degrees 17 minutes 36 seconds East 2,167.69 feet, South 1,172.45 feet, and East 2,193.23 feet to a point on the Western boundary of said State Lease No. 14589 having Coordinates of $X = 2,317,736.10$ and $Y = 198,143.96$; thence South 2,082.84 feet along the Western boundary of said State Lease No. 14589 to its Southwest corner having Coordinates of $X = 2,317,736.10$ and $Y = 196,061.12$; thence South 89 degrees 30 minutes 18 seconds West 2,812.45 feet to the Northeast corner of the East portion of State Lease No. 3258, as amended having Coordinates of $X = 2,314,923.76$ and $Y = 196,036.82$; thence South 89 degrees 30 minutes 18 seconds West

1,692.73 feet along the North boundary of the East portion of said State Lease No. 3258 to its Northwest corner having Coordinates of X = 2,313,231.09 and Y = 196,022.20; thence South 89 degrees 30 minutes 18 seconds West 2,696.97 feet to the Southeast corner of the South portion of the said State Lease No. 1480 having Coordinates of X = 2,310,534.22 and Y = 195,998.90; thence along the East and North boundary of the South portion of said State Lease No. 1480 the following courses and distances: North 43 degrees 10 minutes 43 seconds East 325.79 feet to a corner having Coordinates of X = 2,310,757.15 and Y = 196,236.48, North 31 degrees 20 minutes 43 seconds West 2,037.70 feet to a corner having Coordinates of X = 2,309,697.15 and Y = 197,976.77, South 84 degrees 46 minutes 18 seconds West 2,024.53 feet to a corner having Coordinates of X = 2,307,681.04 and Y = 197,792.28, South 81 degrees 46 minutes 24 seconds West 1,105.08 feet to a corner having Coordinates of X = 2,306,587.33 and Y = 197,634.16 and South 77 degrees 05 minutes 33 seconds West 503.16 feet to a point having Coordinates of X = 2,306,096.88 and Y = 197,521.76; thence North 4,252.69 feet to the point of beginning, **LESS AND EXCEPT** Operating Agreement 0320 as described as follows: Beginning at a point having Coordinates of X = 2,309,715.63 and Y = 202,712.37; thence South 73 degrees 36 minutes 35 seconds East 3,325.63 feet to a point having Coordinates of X = 2,312,906.11 and Y = 201,773.95; thence South 63 degrees 21 minutes 41 seconds West 2,123.35 feet to a point having Coordinates of X = 2,311,008.15 and Y = 200,821.92; thence North 70 degrees 12 minutes 56 seconds West 1,185.32 feet to a point having Coordinates of X = 2,309,892.80 and Y = 201,223.13; thence North 06 degrees 47 minutes 04 seconds West 1,499.74 feet to the point of beginning, from the surface to one hundred feet (100') below the stratigraphic equivalent of the Tex 11 Sand, as seen in the XPLOR State Lease 1480 #2 (Serial Number 224584) between 13,096 feet and 13,190 feet MD, (This lease includes only waterbottoms claimed and owned by the state and specifically excludes any land which the state may claim or own and to which the mineral rights are vested in the state), nominated tract containing approximately **1,409 acres**, all as more particularly outlined on a plat on file in the Office of Mineral Resources, Department of Natural Resources. All bearings, distances and coordinates are based on Louisiana Coordinate System of 1927, (North or South Zone), where applicable.

NOTE: The above description of the Tract nominated for lease has been provided and corrected, where required, exclusively by the nomination party. Any mineral lease selected from this Tract and awarded by the Louisiana State Mineral and Energy Board shall be without warranty of any kind, either express, implied, or statutory, including, but not limited to, the implied warranties of merchantability and fitness for a particular purpose. Should the mineral lease awarded by the Louisiana State Mineral and Energy Board be subsequently modified, cancelled or abrogated due to the existence of conflicting leases, operating agreements, private claims or other future obligations or conditions which may affect all or any portion of the leased Tract, it shall not relieve the Lessee of the obligation to pay any bonus due thereon to the Louisiana State Mineral and

Energy Board, nor shall the Louisiana State Mineral and Energy Board be obligated to refund any consideration paid by the Lessor prior to such modification, cancellation, or abrogation, including, but not limited to, bonuses, rentals and royalties.

NOTE: The State of Louisiana does hereby reserve, and this lease shall be subject to, the imprescriptible right of surface use in the nature of a servitude in favor of the Department of Natural Resources, including its Offices and Commissions, for the sole purpose of implementing, constructing, servicing and maintaining approved coastal zone management and/or restoration projects. Utilization of any and all rights derived under this lease by the mineral lessee, its agents, successors or assigns, shall not interfere with nor hinder the reasonable surface use by the Department of Natural Resources, its Offices or Commissions, as herein above reserved.

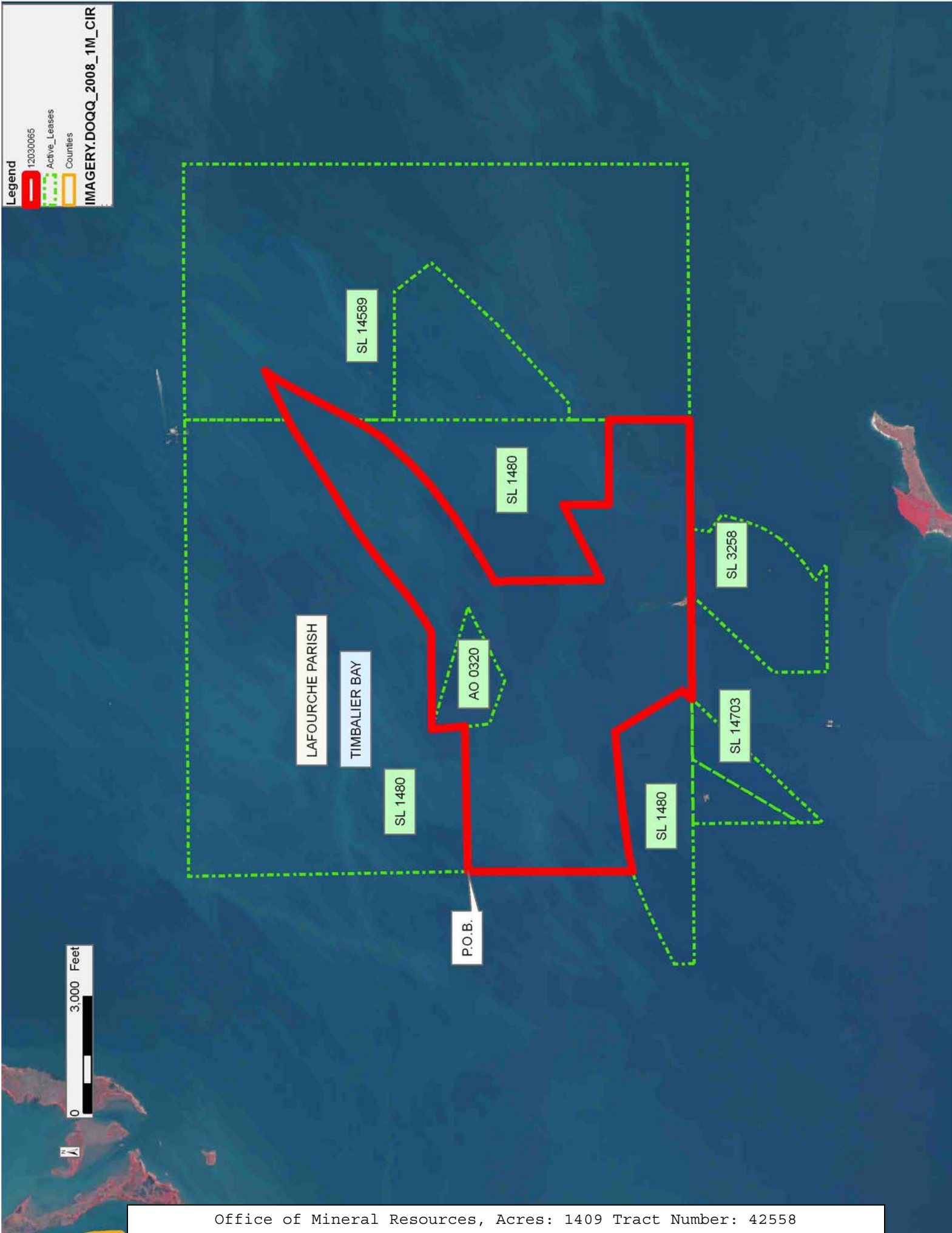
Applicant: THEOPHILUS OIL, GAS & LAND SERVICES, LLC

Bidder	Cash Payment	Price/ Acre	Rental	Oil	Gas	Other

Legend

- 12030065
- Active_Leases
- Counties

IMAGERY.DOQQ_2008_1M_CIR



TRACT 42559 - Lafourche Parish, Louisiana

All of the lands now or formerly constituting the beds and bottoms of all water bodies of every nature and description as to which title is vested in the State of Louisiana, together with all islands arising therein and other lands formed by accretion or by reliction, where allowed by law, excepting tax adjudicated lands, and not presently under mineral lease on March 14, 2012, situated in Lafourche Parish, Louisiana, and more particularly described as follows: Beginning at a point on the East boundary of the East portion of State Lease No. 1480, as amended, said point also located on an interior corner of State Lease No. 14589 having Coordinates of X = 2,317,736.10 and Y = 203,661.00; thence along the boundary of said State Lease No. 14589 the following courses and distances: East 3,300.00 feet to a corner having Coordinates of X = 2,321,036.10 and Y = 203,661.00, South 38 degrees 00 minutes 00 seconds East 1,200.00 feet to a corner having Coordinates of X = 2,321,774.89 and Y = 202,715.39, South 43 degrees 00 minutes 00 seconds West 2,250.01 feet to a corner having Coordinates of X = 2,320,240.39 and Y = 201,069.83, South 47 degrees 47 minutes 18 seconds West 2,841.07 feet to a corner having Coordinates of X = 2,318,136.10 and Y = 199,161.00 and West 400.00 feet to a point on the East boundary of said State Lease No. 1480 having Coordinates of X = 2,317,736.10 and Y = 199,161.00; thence North 4,500.00 feet along the East boundary of said State Lease No. 1480 to the point of beginning, containing approximately **266.88 acres**, all as more particularly outlined on a plat on file in the Office of Mineral Resources, Department of Natural Resources. All bearings, distances and coordinates are based on Louisiana Coordinate System of 1927, (North or South Zone), where applicable.

NOTE: The above description of the Tract nominated for lease has been provided and corrected, where required, exclusively by the nomination party. Any mineral lease selected from this Tract and awarded by the Louisiana State Mineral and Energy Board shall be without warranty of any kind, either express, implied, or statutory, including, but not limited to, the implied warranties of merchantability and fitness for a particular purpose. Should the mineral lease awarded by the Louisiana State Mineral and Energy Board be subsequently modified, cancelled or abrogated due to the existence of conflicting leases, operating agreements, private claims or other future obligations or conditions which may affect all or any portion of the leased Tract, it shall not relieve the Lessee of the obligation to pay any bonus due thereon to the Louisiana State Mineral and Energy Board, nor shall the Louisiana State Mineral and Energy Board be obligated to refund any consideration paid by the Lessor prior to such modification, cancellation, or abrogation, including, but not limited to, bonuses, rentals and royalties.

NOTE: The State of Louisiana does hereby reserve, and this lease shall be subject to, the imprescriptible right of surface use in the nature of a servitude in favor of the Department of Natural Resources, including its Offices and Commissions, for the sole purpose of implementing,

constructing, servicing and maintaining approved coastal zone management and/or restoration projects. Utilization of any and all rights derived under this lease by the mineral lessee, its agents, successors or assigns, shall not interfere with nor hinder the reasonable surface use by the Department of Natural Resources, its Offices or Commissions, as herein above reserved.

Applicant: THEOPHILUS OIL, GAS & LAND SERVICES, LLC

Bidder	Cash Payment	Price/ Acre	Rental	Oil	Gas	Other

Legend

12030066

Active_Leases

IMAGERY.DOQQ_2008_1M_CIR

0 2,000 Feet



LAFOURCHE PARISH

TIMBALIER BAY

P.O.B.

SL 1480

SL 14589

TRACT 42560 - Terrebonne Parish, Louisiana

All of the lands now or formerly constituting the beds and bottoms of all water bodies of every nature and description as to which title is vested in the State of Louisiana, together with all islands arising therein and other lands formed by accretion or by reliction, where allowed by law, excepting tax adjudicated lands, and not presently under mineral lease on March 14, 2012, situated in Terrebonne Parish, Louisiana, and more particularly described as follows: Beginning at a point located on the East boundary of State Lease No. 199, as amended having Coordinates of X = 2,279,266.22 and Y = 201,262.94; thence Easterly approximately 14,938 feet to a point being the Northwest corner of State Lease No. 3278, as amended, and said State Lease No. 3723, as amended; thence Southerly approximately 5,000 feet along the Western boundary of said State Lease No. 3278 and said State Lease No. 3723 to a point being its Southwest corner; thence Westerly approximately 9,911 feet the point on the East boundary of said State Lease No. 199 having Coordinates of X = 2,284,293.95 and Y = 196,263.14; thence along the East boundary of said State Lease No. 199 the following courses and distances: North 00 degrees 25 minutes 10 seconds West 753.90 feet to a corner having Coordinates of X = 2,284,288.43 and Y = 197,017.02, South 89 degrees 34 minutes 50 seconds West 2,600.00 feet to a corner having Coordinates of X = 2,281,688.50 and Y = 196,997.99, North 00 degrees 25 minutes 10 seconds West 1,200.00 feet to a corner having Coordinates of X = 2,281,679.72 and Y = 198,197.96, South 89 degrees 34 minutes 50 seconds West 326.96 feet to a corner having Coordinates of X = 2,281,352.77 and Y = 198,195.57, North 18 degrees 18 minutes 50 seconds East 239.08 feet to a corner having Coordinates of X = 2,281,427.90 and Y = 198,422.54, North 10 degrees 11 minutes 50 seconds East 162.80 feet to a corner having Coordinates of X = 2,281,456.72 and Y = 198,582.77, North 00 degrees 25 minutes 10 seconds West 65.00 feet to a corner having Coordinates of X = 2,281,456.24 and Y = 198,647.76, North 01 degrees 45 minutes 10 seconds West 215.10 feet to a corner having Coordinates of X = 2,281,449.66 and Y = 198,862.76, North 07 degrees 08 minutes 10 seconds West 85.60 feet to a corner having Coordinates of X = 2,281,439.03 and Y = 198,947.70, North 13 degrees 06 minutes 10 seconds West 205.00 feet to a corner having Coordinates of X = 2,281,392.56 and Y = 199,147.36, North 09 degrees 53 minutes 10 seconds West 152.10 feet to a corner having Coordinates of X = 2,281,366.44 and Y = 199,297.20, North 00 degrees 25 minutes 10 seconds West 80.00 feet to a corner having Coordinates of X = 2,281,365.86 and Y = 199,377.20, North 08 degrees 15 minutes 50 seconds East 74.20 feet to a corner having Coordinates of X = 2,281,376.52 and Y = 199,450.63, North 19 degrees 57 minutes 50 seconds East 369.90 feet to a corner having Coordinates of X = 2,281,502.82 and Y = 199,798.30, South 58 degrees 47 minutes 50 seconds West 273.50 feet to a corner having Coordinates of X = 2,281,268.88 and Y = 199,656.61, South 48 degrees 43 minutes 50 seconds West 244.60 feet to a corner having Coordinates of X = 2,281,085.04 and Y = 199,495.27, South 44 degrees 34 minutes 50 seconds West 282.90 feet to a corner having Coordinates of X = 2,280,886.46 and Y = 199,293.77, South 54 degrees 47 minutes 50 seconds West 219.20 feet to a corner having Coordinates of X = 2,280,707.35 and Y = 199,167.41, North 04

degrees 08 minutes 50 seconds East 125.40 feet to a corner having Coordinates of X = 2,280,716.42 and Y = 199,292.48, North 10 degrees 31 minutes 50 seconds East 157.90 feet to a corner having Coordinates of X = 2,280,745.28 and Y = 199,447.72, North 14 degrees 59 minutes 50 seconds East 150.40 feet to a corner having Coordinates of X = 2,280,784.20 and Y = 199,593.00, North 17 degrees 19 minutes 50 seconds East 131.30 feet to a corner having Coordinates of X = 2,280,823.31 and Y = 199,718.34, North 24 degrees 16 minutes 50 seconds East 275.20 feet to a corner having Coordinates of X = 2,280,936.47 and Y = 199,969.20, North 24 degrees 08 minutes 50 seconds East 192.40 feet to a corner having Coordinates of X = 2,281,015.18 and Y = 200,144.76, South 76 degrees 31 minutes 50 seconds West 354.10 feet to a corner having Coordinates of X = 2,280,670.82 and Y = 200,062.28, North 33 degrees 47 minutes 50 seconds East 302.30 feet to a corner having Coordinates of X = 2,280,838.98 and Y = 200,313.50, South 73 degrees 25 minutes 50 seconds West 197.80 feet to a corner having Coordinates of X = 2,280,649.39 and Y = 200,257.08, North 20 degrees 56 minutes 50 seconds East 123.50 feet to a corner having Coordinates of X = 2,280,693.54 and Y = 200,372.43, North 83 degrees 47 minutes 10 seconds West 432.90 feet to a corner having Coordinates of X = 2,280,263.19 and Y = 200,419.28, North 81 degrees 21 minutes 10 seconds West 349.30 feet to a corner having Coordinates of X = 2,279,917.86 and Y = 200,471.80, North 17 degrees 14 minutes 50 seconds East 477.50 feet to a corner having Coordinates of X = 2,280,059.43 and Y = 200,927.83, North 81 degrees 26 minutes 10 seconds West 256.20 feet to a corner having Coordinates of X = 2,279,806.09 and Y = 200,965.98, North 80 degrees 44 minutes 10 seconds West 357.00 feet to a corner having Coordinates of X = 2,279,453.75 and Y = 201,023.45, North 78 degrees 49 minutes 10 seconds West 189.65 feet to a corner having Coordinates of X = 2,279,267.70 and Y = 201,060.22 and North 00 degrees 25 minutes 10 seconds West 202.73 feet to the point of beginning, (This lease includes only waterbottoms claimed and owned by the state and specifically excludes any land which the state may claim or own and to which the mineral rights are vested in the state), containing approximately **1,409 acres**, all as more particularly outlined on a plat on file in the Office of Mineral Resources, Department of Natural Resources. All bearings, distances and coordinates are based on Louisiana Coordinate System of 1927, (North or South Zone), where applicable.

NOTE: The above description of the Tract nominated for lease has been provided and corrected, where required, exclusively by the nomination party. Any mineral lease selected from this Tract and awarded by the Louisiana State Mineral and Energy Board shall be without warranty of any kind, either express, implied, or statutory, including, but not limited to, the implied warranties of merchantability and fitness for a particular purpose. Should the mineral lease awarded by the Louisiana State Mineral and Energy Board be subsequently modified, cancelled or abrogated due to the existence of conflicting leases, operating agreements, private claims or other future obligations or conditions which may affect all or any portion of the leased Tract, it shall not relieve the Lessee of the obligation to pay any bonus due thereon to the Louisiana State Mineral and

Energy Board, nor shall the Louisiana State Mineral and Energy Board be obligated to refund any consideration paid by the Lessor prior to such modification, cancellation, or abrogation, including, but not limited to, bonuses, rentals and royalties.

NOTE: The State of Louisiana does hereby reserve, and this lease shall be subject to, the imprescriptible right of surface use in the nature of a servitude in favor of the Department of Natural Resources, including its Offices and Commissions, for the sole purpose of implementing, constructing, servicing and maintaining approved coastal zone management and/or restoration projects. Utilization of any and all rights derived under this lease by the mineral lessee, its agents, successors or assigns, shall not interfere with nor hinder the reasonable surface use by the Department of Natural Resources, its Offices or Commissions, as herein above reserved.

Applicant: THEOPHILUS OIL, GAS & LAND SERVICES, LLC

Bidder	Cash Payment	Price/ Acre	Rental	Oil	Gas	Other

