

TRACT 42561 - Lafourche Parish, Louisiana

All of the lands now or formerly constituting the beds and bottoms of all water bodies of every nature and description as to which title is vested in the State of Louisiana, together with all islands arising therein and other lands formed by accretion or by reliction, where allowed by law, excepting tax adjudicated lands, and not presently under mineral lease on March 14, 2012, situated in Lafourche Parish, Louisiana, and more particularly described as follows: Beginning at a point having Coordinates of X = 2,306,096.88 and Y = 201,299.45; thence South 3,777.69 feet to a point on the North boundary of a portion of State Lease No. 1480, as amended having Coordinates of X = 2,306,096.88 and Y = 197,521.76; thence along the North and West boundary of said State Lease No. 1480 the following courses and distances: South 77 degrees 05 minutes 33 seconds West 145.73 feet to a corner having Coordinates of X = 2,305,954.83 and Y = 197,489.21, South 68 degrees 11 minutes 55 seconds West 851.53 feet to a corner having Coordinates of X = 2,305,164.20 and Y = 197,172.96, South 64 degrees 51 minutes 17 seconds West 713.27 feet to a corner having Coordinates of X = 2,304,518.52 and Y = 196,869.88, South 63 degrees 06 minutes 14 seconds West 901.62 feet to a corner having Coordinates of X = 2,303,714.43 and Y = 196,462.01 and South 00 degrees 29 minutes 42 seconds East 522.01 feet to its Southwest corner located on the North boundary of State Lease No. 3599, as amended having Coordinates of X = 2,303,718.94 and Y = 195,940.02; thence along the North boundary of said State Lease No. 3599 the following courses and distances: South 89 degrees 30 minutes 18 seconds West 870.00 feet to a corner having Coordinates of X = 2,302,848.97 and Y = 195,932.51, North 00 degrees 29 minutes 42 seconds West 405.00 feet to a corner having Coordinates of X = 2,302,845.47 and Y = 196,337.49 and South 89 degrees 30 minutes 18 seconds West approximately 4,416 feet to the point being the Southeast corner of State Lease No. 3278, as amended and State Lease No. 3723, as amended; thence Northerly approximately 5,000 feet along the East boundary said State Lease No. 3278 and said State Lease No. 3723 to their Northeast corner; thence Easterly approximately 7,670 feet to the point of beginning, (This lease includes only waterbottoms claimed and owned by the state and specifically excludes any land which the state may claim or own and to which the mineral rights are vested in the state), containing approximately **846 acres**, all as more particularly outlined on a plat on file in the Office of Mineral Resources, Department of Natural Resources. All bearings, distances and coordinates are based on Louisiana Coordinate System of 1927, (North or South Zone), where applicable.

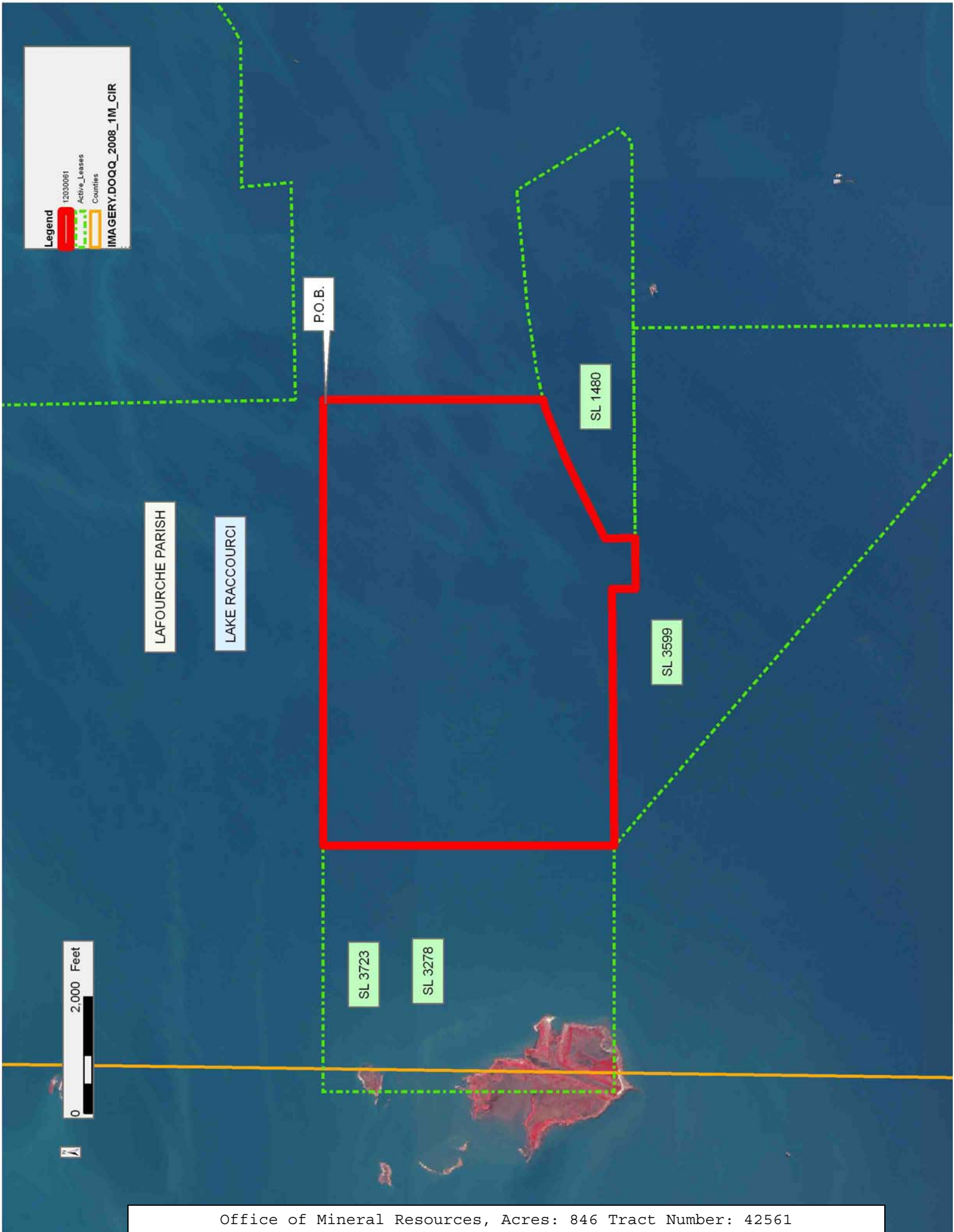
NOTE: The above description of the Tract nominated for lease has been provided and corrected, where required, exclusively by the nomination party. Any mineral lease selected from this Tract and awarded by the Louisiana State Mineral and Energy Board shall be without warranty of any kind, either express, implied, or statutory, including, but not limited to, the implied warranties of merchantability and fitness for a particular purpose. Should the mineral lease awarded by the Louisiana State Mineral and Energy Board be subsequently modified, cancelled or abrogated due to the existence of conflicting leases, operating agreements, private claims

or other future obligations or conditions which may affect all or any portion of the leased Tract, it shall not relieve the Lessee of the obligation to pay any bonus due thereon to the Louisiana State Mineral and Energy Board, nor shall the Louisiana State Mineral and Energy Board be obligated to refund any consideration paid by the Lessor prior to such modification, cancellation, or abrogation, including, but not limited to, bonuses, rentals and royalties.

NOTE: The State of Louisiana does hereby reserve, and this lease shall be subject to, the imprescriptible right of surface use in the nature of a servitude in favor of the Department of Natural Resources, including its Offices and Commissions, for the sole purpose of implementing, constructing, servicing and maintaining approved coastal zone management and/or restoration projects. Utilization of any and all rights derived under this lease by the mineral lessee, its agents, successors or assigns, shall not interfere with nor hinder the reasonable surface use by the Department of Natural Resources, its Offices or Commissions, as herein above reserved.

Applicant: THEOPHILUS OIL, GAS & LAND SERVICES, LLC

Bidder	Cash Payment	Price/ Acre	Rental	Oil	Gas	Other



Legend

12030061

Active Leases

Counties

IMAGERY: DOQQ_2008_1M_CIR

P.O.B.

LAFOURCHE PARISH

LAKE RACCOURCI

SL 1480

SL 3599

SL 3723

SL 3278

0 2,000 Feet

N

TRACT 42562 - Terrebonne Parish, Louisiana

All of the lands now or formerly constituting the beds and bottoms of all water bodies of every nature and description as to which title is vested in the State of Louisiana, together with all islands arising therein and other lands formed by accretion or by reliction, where allowed by law, excepting tax adjudicated lands, and not presently under mineral lease on March 14, 2012, situated in Terrebonne Parish, Louisiana, and more particularly described as follows: Beginning at a point located on the East boundary of State Lease No. 199, as amended having Coordinates of X = 2,284,293.95 and Y = 196,263.14; thence East 5,000.00 feet to a point having Coordinates of X = 2,289,293.95 and Y = 196,263.14; thence South 6,683.20 feet to a point having Coordinates of X = 2,289,293.95 and Y = 189,579.94; thence North 86 degrees 52 minutes 40 seconds West 8,016.55 feet to a corner located on the East boundary of said State Lease No. 199 having Coordinates of X = 2,281,289.30 and Y = 190,016.58; thence along the East boundary of said State Lease No. 199 the following courses and distances: South 89 degrees 34 minutes 50 West 2,600.00 feet to a corner having Coordinates of X = 2,278,689.37 and Y = 189,997.55, North 00 degrees 25 minutes 10 seconds West 600.00 feet to a corner having Coordinates of X = 2,278,684.98 and Y = 190,597.53, South 89 degrees 34 minutes 50 seconds West 1,023.22 feet to a corner having Coordinates of X = 2,277,661.79 and Y = 190,590.04, North 00 degrees 25 minutes 10 seconds West 1,349.35 feet to a corner having Coordinates of X = 2,277,651.91 and Y = 191,939.35, North 89 degrees 34 minutes 50 seconds East 2,220.03 feet to a corner having Coordinates of X = 2,279,871.88 and Y = 191,955.60, North 00 degrees 25 minutes 10 seconds West 2,140.16 feet to a corner having Coordinates of X = 2,279,856.21 and Y = 194,095.70, North 89 degrees 34 minutes 50 seconds East 453.49 feet to a corner having Coordinates 2,280,309.69 and Y = 194,099.02, South 00 degrees 25 minutes 10 seconds East 1,111.20 feet to a corner having Coordinates of X = 2,280,317.82 and Y = 192,987.85, North 89 degrees 34 minutes 50 seconds East 4,000.00 feet to a corner having Coordinates of X = 2,284,317.72 and Y = 193,017.13; thence North 00 degrees 25 minutes 10 seconds West 3,246.10 feet to the point of beginning, containing approximately **1,155.95 acres**, all as more particularly outlined on a plat on file in the Office of Mineral Resources, Department of Natural Resources. All bearings, distances and coordinates are based on Louisiana Coordinate System of 1927, (North or South Zone), where applicable.

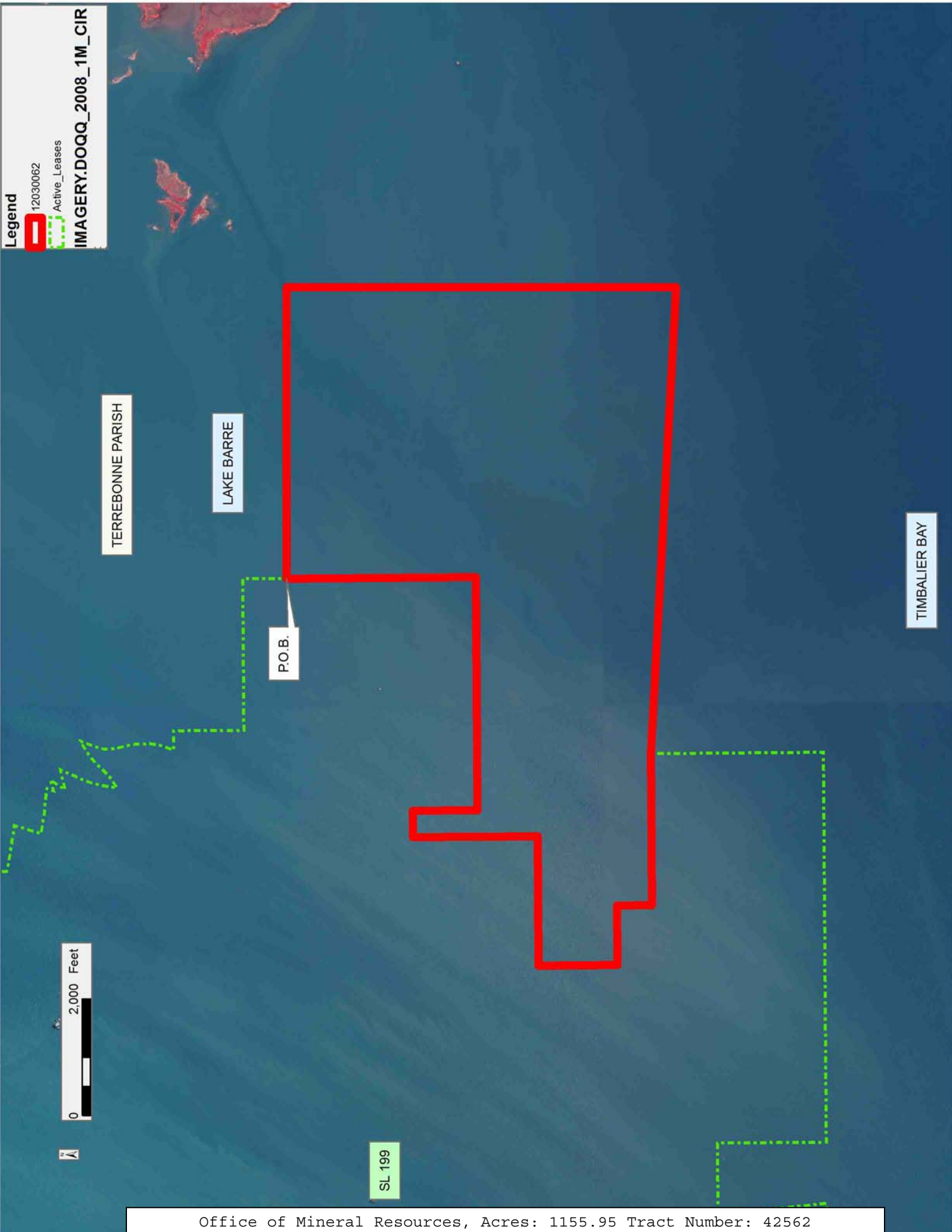
NOTE: The above description of the Tract nominated for lease has been provided and corrected, where required, exclusively by the nomination party. Any mineral lease selected from this Tract and awarded by the Louisiana State Mineral and Energy Board shall be without warranty of any kind, either express, implied, or statutory, including, but not limited to, the implied warranties of merchantability and fitness for a particular purpose. Should the mineral lease awarded by the Louisiana State Mineral and Energy Board be subsequently modified, cancelled or abrogated due to the existence of conflicting leases, operating agreements, private claims or other future obligations or conditions which may affect all or any

portion of the leased Tract, it shall not relieve the Lessee of the obligation to pay any bonus due thereon to the Louisiana State Mineral and Energy Board, nor shall the Louisiana State Mineral and Energy Board be obligated to refund any consideration paid by the Lessor prior to such modification, cancellation, or abrogation, including, but not limited to, bonuses, rentals and royalties.

NOTE: The State of Louisiana does hereby reserve, and this lease shall be subject to, the imprescriptible right of surface use in the nature of a servitude in favor of the Department of Natural Resources, including its Offices and Commissions, for the sole purpose of implementing, constructing, servicing and maintaining approved coastal zone management and/or restoration projects. Utilization of any and all rights derived under this lease by the mineral lessee, its agents, successors or assigns, shall not interfere with nor hinder the reasonable surface use by the Department of Natural Resources, its Offices or Commissions, as herein above reserved.

Applicant: THEOPHILUS OIL, GAS & LAND SERVICES, LLC

Bidder	Cash Payment	Price/ Acre	Rental	Oil	Gas	Other



Legend

12030062

Active_Leases

IMAGERY.DOQQ_2008_1M_CIR

TERREBONNE PARISH

LAKE BARRE

TIMBALIER BAY

P.O.B.

SL 199

0 2,000 Feet

N

TRACT 42563 - Lafourche and Terrebonne Parishes, Louisiana

All of the lands now or formerly constituting the beds and bottoms of all water bodies of every nature and description as to which title is vested in the State of Louisiana, together with all islands arising therein and other lands formed by accretion or by reliction, where allowed by law, excepting tax adjudicated lands, and not presently under mineral lease on March 14, 2012, situated in Lafourche and Terrebonne Parishes, Louisiana, and more particularly described as follows: Beginning at a point having Coordinates of X = 2,289,293.95 and Y = 196,263.14; thence Easterly approximately 4,911 feet to the Southwest corner of State Lease No. 3278, as amended and State Lease No. 3723, as amended; thence Easterly approximately 4,225 feet along the South boundary of said State Lease No. 3278 and said State Lease No. 3723 to its Southeast corner; thence Southerly approximately 7,218 feet to a point having Coordinates of X = 2,298,431.20 and Y = 189,081.52; thence North 86 degrees 52 minutes 40 seconds West 9,150.84 feet to a point having Coordinates of X = 2,289,293.95 and Y = 189,579.94; thence North 6,683.20 feet to the point of beginning, (This lease includes only waterbottoms claimed and owned by the state and specifically excludes any land which the state may claim or own and to which the mineral rights are vested in the state), containing approximately **1,450 acres**, all as more particularly outlined on a plat on file in the Office of Mineral Resources, Department of Natural Resources. All bearings, distances and coordinates are based on Louisiana Coordinate System of 1927, (North or South Zone), where applicable.

NOTE: The above description of the Tract nominated for lease has been provided and corrected, where required, exclusively by the nomination party. Any mineral lease selected from this Tract and awarded by the Louisiana State Mineral and Energy Board shall be without warranty of any kind, either express, implied, or statutory, including, but not limited to, the implied warranties of merchantability and fitness for a particular purpose. Should the mineral lease awarded by the Louisiana State Mineral and Energy Board be subsequently modified, cancelled or abrogated due to the existence of conflicting leases, operating agreements, private claims or other future obligations or conditions which may affect all or any portion of the leased Tract, it shall not relieve the Lessee of the obligation to pay any bonus due thereon to the Louisiana State Mineral and Energy Board, nor shall the Louisiana State Mineral and Energy Board be obligated to refund any consideration paid by the Lessor prior to such modification, cancellation, or abrogation, including, but not limited to, bonuses, rentals and royalties.

NOTE: The State of Louisiana does hereby reserve, and this lease shall be subject to, the imprescriptible right of surface use in the nature of a servitude in favor of the Department of Natural Resources, including its Offices and Commissions, for the sole purpose of implementing, constructing, servicing and maintaining approved coastal zone management and/or restoration projects. Utilization of any and all rights derived under this lease by the mineral lessee, its agents, successors or assigns,

shall not interfere with nor hinder the reasonable surface use by the Department of Natural Resources, its Offices or Commissions, as herein above reserved.

Applicant: THEOPHILUS OIL, GAS & LAND SERVICES, LLC

Bidder	Cash Payment	Price/ Acre	Rental	Oil	Gas	Other

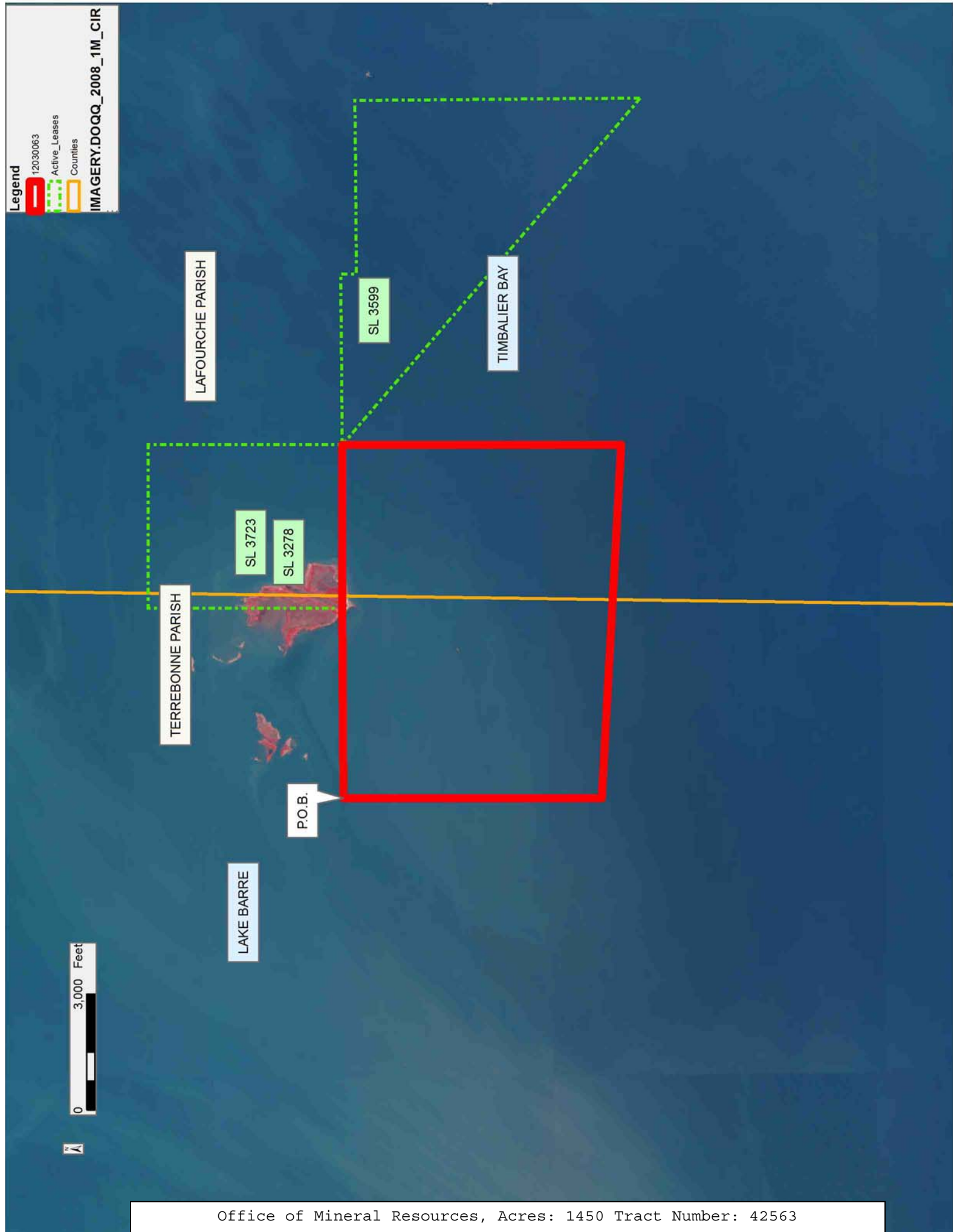
Legend

12030063

Active_Leases

Counties

IMAGERY.D00Q_2008_1M_CIR



TRACT 42564 - Lafourche Parish, Louisiana

All of the lands now or formerly constituting the beds and bottoms of all water bodies of every nature and description as to which title is vested in the State of Louisiana, together with all islands arising therein and other lands formed by accretion or by reliction, where allowed by law, excepting tax adjudicated lands, and not presently under mineral lease on March 14, 2012, situated in Lafourche Parish, Louisiana, and more particularly described as follows: Beginning at a point having Coordinates of X = 2,298,431.20 and Y = 189,081.52; thence Northerly approximately 7,218 feet to the point being the Southeast corner of State Lease No. 3278, as amended and State Lease No. 3723, as amended, and being the Northernmost corner of State Lease No. 3599, as amended; thence South 49 degrees 19 minutes 18 seconds East approximately 11,824 feet along the said Southwestern boundary of said State Lease No. 3599 to its Southernmost corner having Coordinates of X = 2,307,396.54 and Y = 188,592.47; thence North 86 degrees 52 minutes 40 seconds West 8,978.67 feet to the point of beginning, containing approximately **743 acres**, all as more particularly outlined on a plat on file in the Office of Mineral Resources, Department of Natural Resources. All bearings, distances and coordinates are based on Louisiana Coordinate System of 1927, (North or South Zone), where applicable.

NOTE: The above description of the Tract nominated for lease has been provided and corrected, where required, exclusively by the nomination party. Any mineral lease selected from this Tract and awarded by the Louisiana State Mineral and Energy Board shall be without warranty of any kind, either express, implied, or statutory, including, but not limited to, the implied warranties of merchantability and fitness for a particular purpose. Should the mineral lease awarded by the Louisiana State Mineral and Energy Board be subsequently modified, cancelled or abrogated due to the existence of conflicting leases, operating agreements, private claims or other future obligations or conditions which may affect all or any portion of the leased Tract, it shall not relieve the Lessee of the obligation to pay any bonus due thereon to the Louisiana State Mineral and Energy Board, nor shall the Louisiana State Mineral and Energy Board be obligated to refund any consideration paid by the Lessor prior to such modification, cancellation, or abrogation, including, but not limited to, bonuses, rentals and royalties.

NOTE: The State of Louisiana does hereby reserve, and this lease shall be subject to, the imprescriptible right of surface use in the nature of a servitude in favor of the Department of Natural Resources, including its Offices and Commissions, for the sole purpose of implementing, constructing, servicing and maintaining approved coastal zone management and/or restoration projects. Utilization of any and all rights derived under this lease by the mineral lessee, its agents, successors or assigns, shall not interfere with nor hinder the reasonable surface use by the Department of Natural Resources, its Offices or Commissions, as herein above reserved.

Applicant: THEOPHILUS OIL, GAS & LAND SERVICES, LLC

Bidder	Cash Payment	Price/ Acre	Rental	Oil	Gas	Other

Legend

12030064

Active_Leases

IMAGERY.DOQQ_2008_1M_CIR

0 3,000 Feet



SL 3723

SL 3278

LAFOURCHE PARISH

LAKE RACCOURCI

SL 3599

P.O.B.

TIMBALIER BAY

TRACT 42565 - Lafourche Parish, Louisiana

All of the lands now or formerly constituting the beds and bottoms of all water bodies of every nature and description as to which title is vested in the State of Louisiana, together with all islands arising therein and other lands formed by accretion or by reliction, where allowed by law, excepting tax adjudicated lands, and not presently under mineral lease on March 14, 2012, situated in Lafourche Parish, Louisiana, and more particularly described as follows: Beginning at the Northeast corner of State Lease No. 14703, as amended, said point also being the Southeast corner of State Lease No. 1480, as amended having Coordinates of X = 2,310,534.22 and Y = 195,998.90; thence North 89 degrees 30 minutes 18 seconds East 2,696.97 feet to the Northwest corner of State Lease No. 3258, as amended having Coordinates of X = 2,313,231.09 and Y = 196,022.20; thence along the West, South and East boundary of said State Lease No. 3258, as amended the following courses and distances: South 43 degrees 31 minutes 57 seconds West 2,906.95 feet to a corner having Coordinates of X = 2,311,228.89 and Y = 193,914.70, South 00 degrees 26 minutes 59 seconds East 1,399.89 feet to a corner having Coordinates of X = 2,311,239.87 and Y = 192,514.86, North 89 degrees 30 minutes 18 seconds East 2,788.87 feet to a corner having Coordinates of X = 2,314,028.64 and Y = 192,538.95, North 57 degrees 00 minutes 41 seconds West 534.71 feet to a corner having Coordinates of X = 2,313,580.14 and Y = 192,830.09, North 58 degrees 14 minutes 26 seconds East 493.84 feet to a corner having Coordinates of X = 2,314,000.03 and Y = 193,090.02, North 49 degrees 23 minutes 55 seconds East 368.80 feet to a corner having Coordinates of X = 2,314,280.04 and Y = 193,330.03, North 46 degrees 04 minutes 51 seconds East 374.80 feet to a corner having Coordinates of X = 2,314,550.02 and Y = 193,590.01; North 37 degrees 18 minutes 14 seconds East 264.00 feet to a corner having Coordinates of X = 2,314,710.01 and Y = 193,800.00, North 31 degrees 49 minutes 39 seconds East 341.30 feet to a corner having Coordinates of X = 2,314,890.00 and Y = 194,090.00, North 24 degrees 37 minutes 24 seconds East 264.00 feet to a corner having Coordinates of X = 2,315,000.00 and Y = 194,329.98, North 20 degrees 22 minutes 35 seconds East 373.40 feet to a corner having Coordinates of X = 2,315,130.01 and Y = 194,680.01, North 15 degrees 06 minutes 34 seconds East 580.77 feet to a corner having Coordinates of X = 2,315,281.40 and Y = 195,240.71, North 54 degrees 21 minutes 40 seconds West 530.82 feet to a corner having Coordinates of X = 2,314,850.00 and Y = 195,550.00 and North 08 degrees 36 minutes 56 seconds East 492.38 feet to its Northeast corner having Coordinates of X = 2,314,923.76 and Y = 196,036.82; thence North 89 degrees 30 minutes 18 seconds East 2,812.45 feet to a point on being the Southeast corner of State Lease No. 14589 having Coordinates of X = 2,317,736.10 and Y = 196,061.12; thence North 89 degrees 30 minutes 18 seconds East 112.31 feet to a point on the Southern boundary of said State Lease No. 14589 having Coordinates of X = 2,317,848.41 and Y = 196,062.09; thence South 7,469.62 feet to a point having Coordinates of X = 2,317,848.41 and Y = 188,592.47; thence West 10,451.87 feet to the South corner of State Lease No. 3599, as amended having Coordinates of X = 2,307,396.54 and Y = 188,592.47; thence North 00 degrees 29 minutes 42

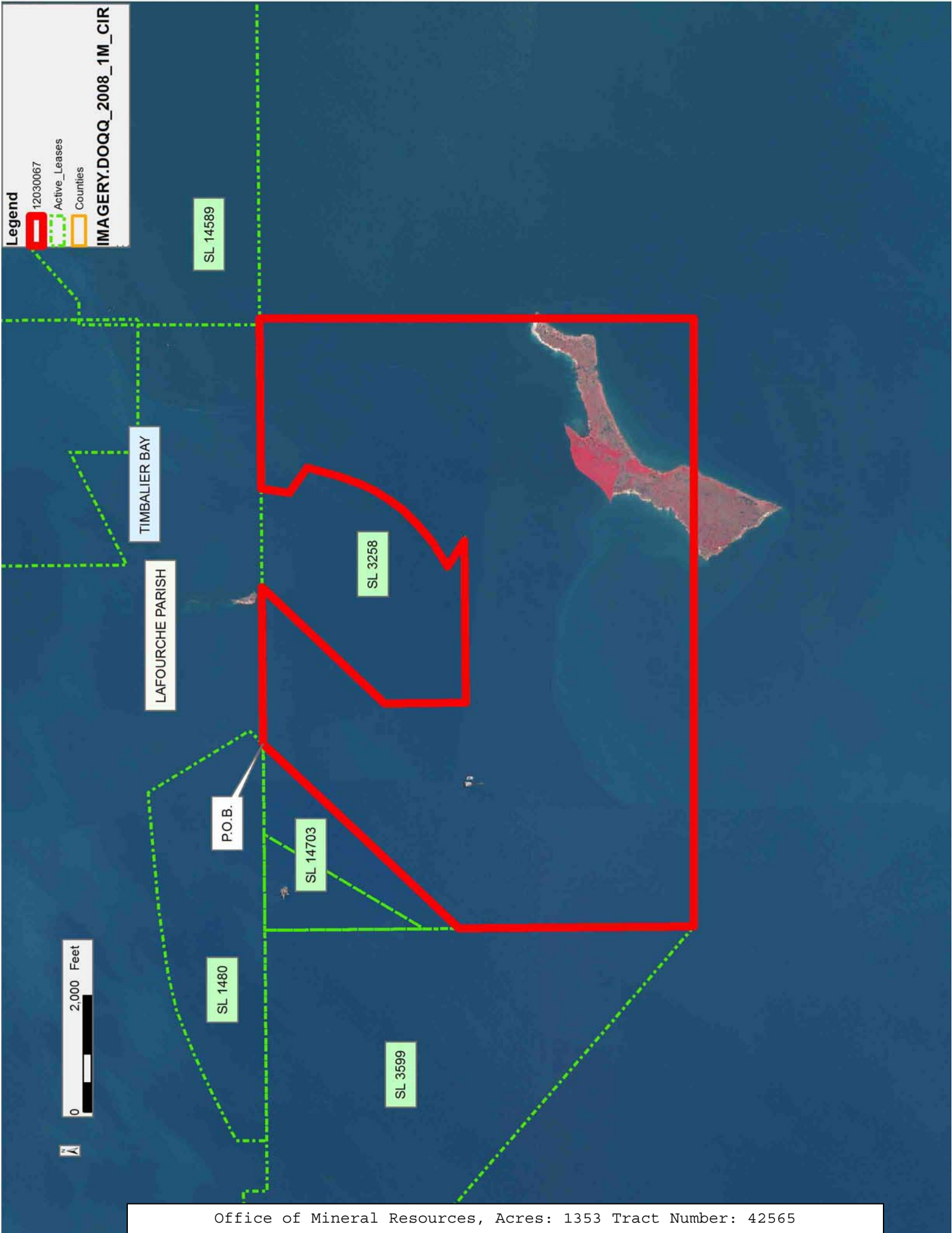
seconds West 4,043.58 feet along the East boundary of said State Lease No. 3599 to the Southeast corner of State Lease No. 14703, as amended having Coordinates of X = 2,307,361.61 and Y = 192,635.90; thence along the Southeast boundary of said State Lease No. 14703 the following courses and distances: North 43 degrees 30 minutes 18 seconds East 2,167.58 feet to a corner and North 43 degrees 10 minutes 43 seconds East 2,455.77 feet to the point of beginning, **LESS AND EXCEPT** any right, title, and interest in lands owned by and not under lease from the State of Louisiana, on behalf of the Lafourche Parish School Board, situated in Section 16, Township 22 South, Range 21 East, Lafourche Parish, Louisiana, contained within the above described tract, (This lease includes only waterbottoms claimed and owned by the state and specifically excludes any land which the state may claim or own and to which the mineral rights are vested in the state), containing approximately **1,353 acres**, all as more particularly outlined on a plat on file in the Office of Mineral Resources, Department of Natural Resources. All bearings, distances and coordinates are based on Louisiana Coordinate System of 1927, (North or South Zone), where applicable.

NOTE: The above description of the Tract nominated for lease has been provided and corrected, where required, exclusively by the nomination party. Any mineral lease selected from this Tract and awarded by the Louisiana State Mineral and Energy Board shall be without warranty of any kind, either express, implied, or statutory, including, but not limited to, the implied warranties of merchantability and fitness for a particular purpose. Should the mineral lease awarded by the Louisiana State Mineral and Energy Board be subsequently modified, cancelled or abrogated due to the existence of conflicting leases, operating agreements, private claims or other future obligations or conditions which may affect all or any portion of the leased Tract, it shall not relieve the Lessee of the obligation to pay any bonus due thereon to the Louisiana State Mineral and Energy Board, nor shall the Louisiana State Mineral and Energy Board be obligated to refund any consideration paid by the Lessor prior to such modification, cancellation, or abrogation, including, but not limited to, bonuses, rentals and royalties.

NOTE: The State of Louisiana does hereby reserve, and this lease shall be subject to, the imprescriptible right of surface use in the nature of a servitude in favor of the Department of Natural Resources, including its Offices and Commissions, for the sole purpose of implementing, constructing, servicing and maintaining approved coastal zone management and/or restoration projects. Utilization of any and all rights derived under this lease by the mineral lessee, its agents, successors or assigns, shall not interfere with nor hinder the reasonable surface use by the Department of Natural Resources, its Offices or Commissions, as herein above reserved.

Applicant: THEOPHILUS OIL, GAS & LAND SERVICES, LLC

Bidder	Cash Payment	Price/ Acre	Rental	Oil	Gas	Other



TRACT 42566 - Lafourche Parish, Louisiana

All of the lands now or formerly constituting the beds and bottoms of all water bodies of every nature and description as to which title is vested in the State of Louisiana, together with all islands arising therein and other lands formed by accretion or by reliction, where allowed by law, excepting tax adjudicated lands, and not presently under mineral lease on March 14, 2012, situated in Lafourche Parish, Louisiana, and more particularly described as follows: Beginning at a point on the South boundary of State Lease No. 14589 having Coordinates of X = 2,317,848.41 and Y = 196,062.09; thence North 89 degrees 30 minutes 18 seconds East 4,241.99 feet along the South boundary of said State Lease No. 14589 to a corner having Coordinates of X = 2,322,090.24 and Y = 196,098.74; thence North 89 degrees 30 minutes 18 seconds East 2,234.11 feet along the South boundary of said State Lease No. 14589 to its Southeast corner having Coordinates of X = 2,324,324.27 and Y = 196,118.04; thence South 7,525.57 feet to a point having Coordinates of X = 2,324,324.27 and Y = 188,592.47; thence West 6,475.86 feet to a point having Coordinates of X = 2,317,848.41 and Y = 188,592.47; thence North 7,469.62 feet to the point of beginning, **LESS AND EXCEPT** any right, title, and interest in lands owned by and not under lease from the State of Louisiana, on behalf of the Lafourche Parish School Board, situated in Section 16, Township 22 South, Range 21 East, Lafourche Parish, Louisiana, contained within the above described tract, (This lease includes only waterbottoms claimed and owned by the state and specifically excludes any land which the state may claim or own and to which the mineral rights are vested in the state), containing approximately **1,114.63 acres**, all as more particularly outlined on a plat on file in the Office of Mineral Resources, Department of Natural Resources. All bearings, distances and coordinates are based on Louisiana Coordinate System of 1927, (North or South Zone), where applicable.

NOTE: The above description of the Tract nominated for lease has been provided and corrected, where required, exclusively by the nomination party. Any mineral lease selected from this Tract and awarded by the Louisiana State Mineral and Energy Board shall be without warranty of any kind, either express, implied, or statutory, including, but not limited to, the implied warranties of merchantability and fitness for a particular purpose. Should the mineral lease awarded by the Louisiana State Mineral and Energy Board be subsequently modified, cancelled or abrogated due to the existence of conflicting leases, operating agreements, private claims or other future obligations or conditions which may affect all or any portion of the leased Tract, it shall not relieve the Lessee of the obligation to pay any bonus due thereon to the Louisiana State Mineral and Energy Board, nor shall the Louisiana State Mineral and Energy Board be obligated to refund any consideration paid by the Lessor prior to such modification, cancellation, or abrogation, including, but not limited to, bonuses, rentals and royalties.

NOTE: The State of Louisiana does hereby reserve, and this lease shall be subject to, the imprescriptible right of surface use in the nature of a servitude in favor of the Department of Natural Resources, including its Offices and Commissions, for the sole purpose of implementing, constructing, servicing and maintaining approved coastal zone management and/or restoration projects. Utilization of any and all rights derived under this lease by the mineral lessee, its agents, successors or assigns, shall not interfere with nor hinder the reasonable surface use by the Department of Natural Resources, its Offices or Commissions, as herein above reserved.

Applicant: THEOPHILUS OIL, GAS & LAND SERVICES, LLC

Bidder	Cash Payment	Price/ Acre	Rental	Oil	Gas	Other



TRACT 42567 - Portion of Block 113, South Timbalier Area, Revised, Terrebonne Parish, Louisiana

All of the lands now or formerly constituting the beds and bottoms of all water bodies of every nature and description as to which title is vested in the State of Louisiana, together with all islands arising therein and other lands formed by accretion or by reliction, where allowed by law, excepting tax adjudicated lands, and not presently under mineral lease on March 14, 2012, situated in Terrebonne Parish, Louisiana, and more particularly described as follows: Beginning at a point having Coordinates of X = 2,204,879.53 and Y = 167,593.73; Thence Northerly approximately 4,134 feet to the Southwest corner of State of Louisiana State Lease No. 199, as amended; Thence on and along the boundary of said State Lease No. 199 the following courses and distances: Easterly approximately 5,354 feet, Northerly approximately 1,403 feet and Easterly approximately 4,232 feet to the Southwest corner of State of Louisiana Lease No. 20263; Thence along the Southern boundary of said State Lease No. 20263 to its Southeast corner having Coordinates of X = 2,215,162.18 and Y = 173,177.40, said point also being the Southwest corner of State of Louisiana State Lease No. 18167, as amended; Thence on and along the Southern boundary of said State Lease No. 18167 the following courses and distances: North 89 degrees 38 minutes 19 seconds East 5,280 feet to a point having Coordinates of X = 2,220,442.08 and Y = 173,210.70 and North 89 degrees 39 minutes 55 seconds East 5,280.00 feet to a point having Coordinates of X = 2,225,721.99 and Y = 173,241.55, said point also being the Southeast corner of said State Lease No. 18167; Thence Southerly approximately 4,175 feet to a point on the Northern boundary of State of Louisiana State Lease No. 2620, as amended; Thence Westerly approximately 5,298 feet along the Northern boundary of said State Lease No. 2620 to a point being a Southeast corner of State of Louisiana Lease State Lease No. 16510, as amended; Thence on and along the boundary of said State Lease No. 16510 the following courses and distances: North approximately 1,534 feet to a point having Coordinates of X = 2,220,450.00 and Y = 169,066.29, West 7,900.00 feet to a point having Coordinates of X = 2,212,550.00 and Y = 170,600.00, and South 2,710.00 feet to a point having Coordinates of X = 2,212,550.00 and Y = 167,890.00, said point also being the Northwest corner of State of Louisiana State Lease No. 16511; Thence Southerly approximately 300 feet to the Southwest corner of said State Lease No. 16511; Thence Westerly approximately 7,671 feet to the point of beginning, containing approximately **1,784 acres**, all as more particularly outlined on a plat on file in the Office of Mineral Resources, Department of Natural Resources. All bearings, distances and coordinates are based on Louisiana Coordinate System of 1927, (North or South Zone), where applicable.

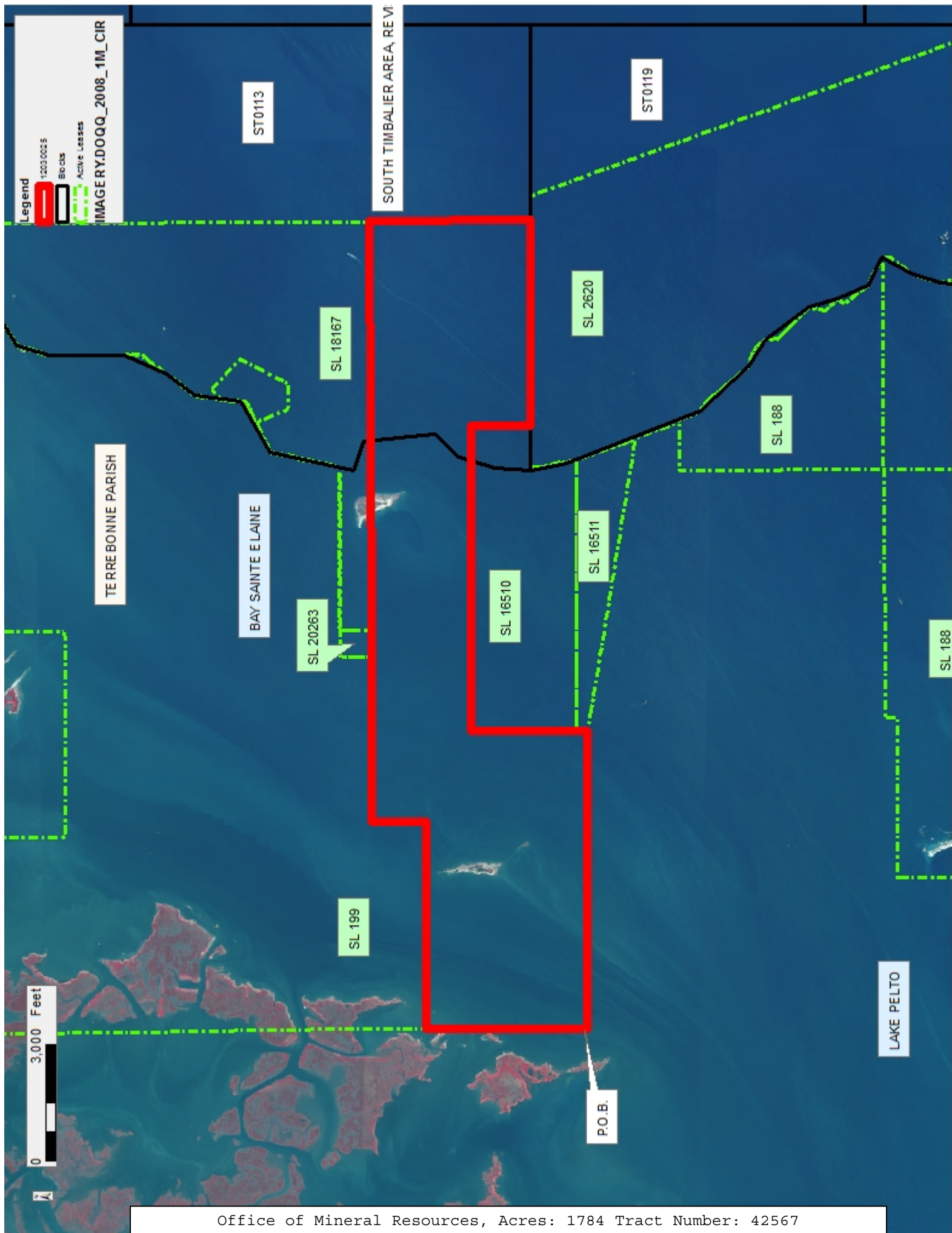
NOTE: The above description of the Tract nominated for lease has been provided and corrected, where required, exclusively by the nomination party. Any mineral lease selected from this Tract and awarded by the Louisiana State Mineral and Energy Board shall be without warranty of any kind, either express, implied, or statutory, including, but not limited to, the implied warranties of merchantability and fitness for a particular

purpose. Should the mineral lease awarded by the Louisiana State Mineral and Energy Board be subsequently modified, cancelled or abrogated due to the existence of conflicting leases, operating agreements, private claims or other future obligations or conditions which may affect all or any portion of the leased Tract, it shall not relieve the Lessee of the obligation to pay any bonus due thereon to the Louisiana State Mineral and Energy Board, nor shall the Louisiana State Mineral and Energy Board be obligated to refund any consideration paid by the Lessor prior to such modification, cancellation, or abrogation, including, but not limited to, bonuses, rentals and royalties.

NOTE: The State of Louisiana does hereby reserve, and this lease shall be subject to, the imprescriptible right of surface use in the nature of a servitude in favor of the Department of Natural Resources, including its Offices and Commissions, for the sole purpose of implementing, constructing, servicing and maintaining approved coastal zone management and/or restoration projects. Utilization of any and all rights derived under this lease by the mineral lessee, its agents, successors or assigns, shall not interfere with nor hinder the reasonable surface use by the Department of Natural Resources, its Offices or Commissions, as herein above reserved.

Applicant: ROBERT A. SCHROEDER, INC.

Bidder	Cash Payment	Price/ Acre	Rental	Oil	Gas	Other



TRACT 42568 - Portion of Blocks 113, 118, 119, and 120, South Timbalier Area, Revised, Terrebonne Parish, Louisiana

All of the lands now or formerly constituting the beds and bottoms of all water bodies of every nature and description as to which title is vested in the State of Louisiana, together with all islands arising therein and other lands formed by accretion or by reliction, where allowed by law, excepting tax adjudicated lands, and not presently under mineral lease on March 14, 2012, situated in Terrebonne Parish, Louisiana, and more particularly described as follows: Beginning at the Southeast corner of State of Louisiana State Lease No. 18167, as amended, having Coordinates of X = 2,225,721.99 and Y = 173,241.55; Thence North 00 degrees 20 minutes 05 seconds West 1,689.74 feet on and along the eastern boundary of said State of Louisiana State Lease No. 18167, as amended, to a point having Coordinates of X = 2,225,712.12 and Y = 174,931.26; Thence East 7,618.00 feet to a point having Coordinates of X = 2,233,330.12 and Y = 174,931.26; Thence South 00 degrees 01 minutes 54 seconds East 17,986.97 feet to a point having Coordinates of X = 2,233,340.06 and Y = 156,944.29, said point being the Northeast corner of State of Louisiana State Lease No. 16942; Thence West approximately 2,569 feet to a point on the boundary of State of Louisiana State Lease No. 2620, as amended having a Coordinate of Y = 156,944.29; Thence along the boundary of said State Lease No. 2620 the following courses and distances: Northerly approximately 1 feet, Northwesterly approximately 12,897 feet and Westerly approximately 625 feet to a point on its Northern boundary; Thence Northerly approximately 4,177 feet to the point of beginning, **LESS AND EXCEPT** that portion, if any, of State Lease No. 2620, as amended and State Lease No. 16970, as amended that may lie within the above described tract, containing approximately **2,350 acres**, all as more particularly outlined on a plat on file in the Office of Mineral Resources, Department of Natural Resources. All bearings, distances and coordinates are based on Louisiana Coordinate System of 1927, (North or South Zone), where applicable.

NOTE: The above description of the Tract nominated for lease has been provided and corrected, where required, exclusively by the nomination party. Any mineral lease selected from this Tract and awarded by the Louisiana State Mineral and Energy Board shall be without warranty of any kind, either express, implied, or statutory, including, but not limited to, the implied warranties of merchantability and fitness for a particular purpose. Should the mineral lease awarded by the Louisiana State Mineral and Energy Board be subsequently modified, cancelled or abrogated due to the existence of conflicting leases, operating agreements, private claims or other future obligations or conditions which may affect all or any portion of the leased Tract, it shall not relieve the Lessee of the obligation to pay any bonus due thereon to the Louisiana State Mineral and Energy Board, nor shall the Louisiana State Mineral and Energy Board be obligated to refund any consideration paid by the Lessor prior to such modification, cancellation, or abrogation, including, but not limited to, bonuses, rentals and royalties.

NOTE: The State of Louisiana does hereby reserve, and this lease shall be subject to, the imprescriptible right of surface use in the nature of a servitude in favor of the Department of Natural Resources, including its Offices and Commissions, for the sole purpose of implementing, constructing, servicing and maintaining approved coastal zone management and/or restoration projects. Utilization of any and all rights derived under this lease by the mineral lessee, its agents, successors or assigns, shall not interfere with nor hinder the reasonable surface use by the Department of Natural Resources, its Offices or Commissions, as herein above reserved.

NOTE: It appears, according to our records, that a portion of this Tract is located within the restrictive safety fairway area as set out by the Corps of Engineers, U.S. Army and/or the restrictive anchorage area as set out by the U.S. Coast Guard.

Applicant: ROBERT A. SCHROEDER, INC.

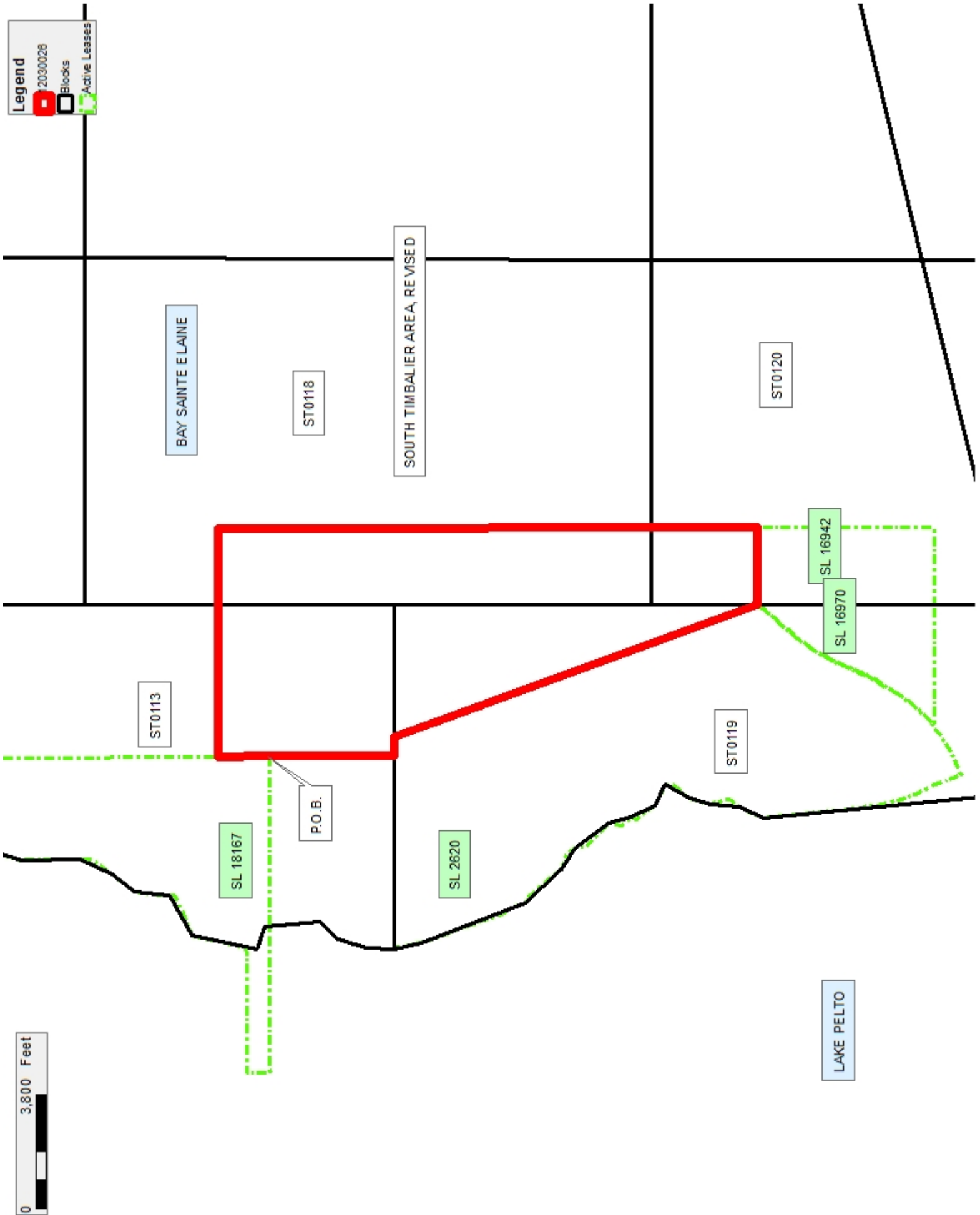
Bidder	Cash Payment	Price/ Acre	Rental	Oil	Gas	Other

Legend

2030028

Blocks

Active Leases



TRACT 42569 - Terrebonne Parish, Louisiana

All of the lands now or formerly constituting the beds and bottoms of all water bodies of every nature and description as to which title is vested in the State of Louisiana, together with all islands arising therein and other lands formed by accretion or by reliction, where allowed by law, excepting tax adjudicated lands, and not presently under mineral lease on March 14, 2012, situated in Terrebonne Parish, Louisiana, and more particularly described as follows: Beginning at a point having Coordinates of X = 2,204,879.53 and Y = 167,593.73; thence Easterly approximately 7,671 feet to a point being the Southwest corner of State of Louisiana State Lease No. 16511; thence Southeasterly approximately 585 feet on and along the Southern boundary of said State Lease No. 16511 to a point being the Northwest corner of State of Louisiana State Lease No. 16705, as amended; thence on and along said State Lease No. 16705 the following courses and distances: Southerly approximately 2,290 feet and Easterly approximately 6,144 feet to a point of intersection with State of Louisiana State Lease No. 188, as amended; thence along the boundary of said State Lease No. 188 the following courses and distances: Southeasterly approximately 5,249 feet to point having Coordinates of X = 2,219,301.35 and Y = 159,961.92, said point also being the Northwest corner of State of Louisiana State Lease No. 20501; thence South 89 degrees 39 minutes 55 seconds West 6,387.50 feet to a point having Coordinates of X = 2,212,913.96 and Y = 159,924.60, said point being the Northeast corner of State of Louisiana State Lease No. 19477; thence South 89 degrees 39 minutes 55 seconds West 4,172.50 feet on and along the Northern boundary of said State Lease No. 19477 to a point having Coordinates of X = 2,208,741.53 and Y = 159,900.12, said point being the Northwest corner of said State Lease No. 19477; thence West 3,862.00 feet to a point having Coordinates of X = 2,204,879.53 and Y = 159,900.12; thence North 7,693.61 feet to the point of beginning, **LESS AND EXCEPT**, that portion, if any of State Lease No. 16705, as amended, State Lease No. 16511 and State Lease No. 188, as amended that may be contained within the above described tract containing approximately **2,202 acres**, all as more particularly outlined on a plat on file in the Office of Mineral Resources, Department of Natural Resources. All bearings, distances and coordinates are based on Louisiana Coordinate System of 1927, (North or South Zone), where applicable.

NOTE: The above description of the Tract nominated for lease has been provided and corrected, where required, exclusively by the nomination party. Any mineral lease selected from this Tract and awarded by the Louisiana State Mineral and Energy Board shall be without warranty of any kind, either express, implied, or statutory, including, but not limited to, the implied warranties of merchantability and fitness for a particular purpose. Should the mineral lease awarded by the Louisiana State Mineral and Energy Board be subsequently modified, cancelled or abrogated due to the existence of conflicting leases, operating agreements, private claims or other future obligations or conditions which may affect all or any portion of the leased Tract, it shall not relieve the Lessee of the

obligation to pay any bonus due thereon to the Louisiana State Mineral and Energy Board, nor shall the Louisiana State Mineral and Energy Board be obligated to refund any consideration paid by the Lessor prior to such modification, cancellation, or abrogation, including, but not limited to, bonuses, rentals and royalties.

NOTE: The State of Louisiana does hereby reserve, and this lease shall be subject to, the imprescriptible right of surface use in the nature of a servitude in favor of the Department of Natural Resources, including its Offices and Commissions, for the sole purpose of implementing, constructing, servicing and maintaining approved coastal zone management and/or restoration projects. Utilization of any and all rights derived under this lease by the mineral lessee, its agents, successors or assigns, shall not interfere with nor hinder the reasonable surface use by the Department of Natural Resources, its Offices or Commissions, as herein above reserved.

Applicant: ROBERT A. SCHROEDER, INC.

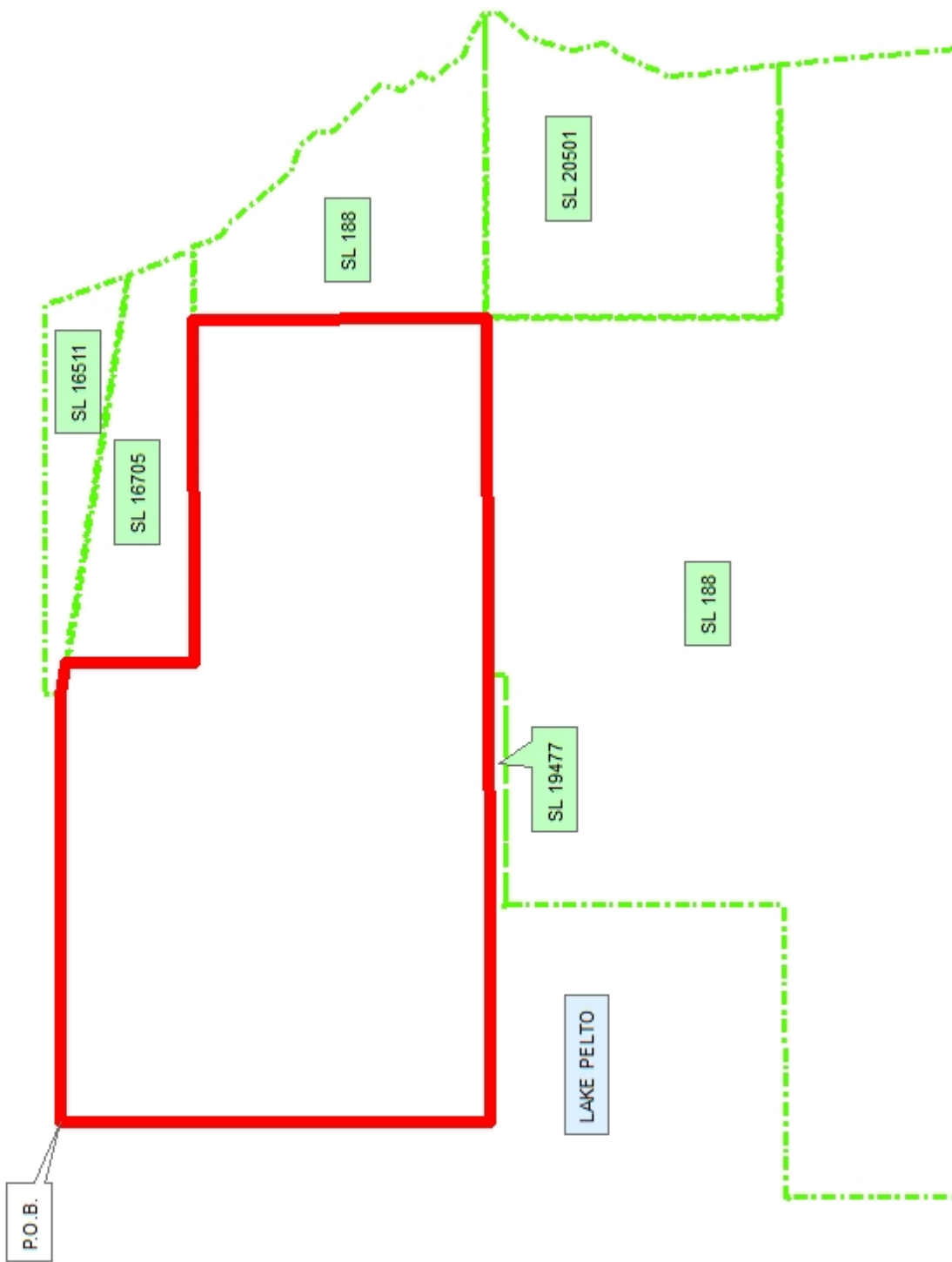
Bidder	Cash Payment	Price/ Acre	Rental	Oil	Gas	Other



TERRE BONNE PARISH

SOUTH TIMBALIER AREA, REVISED

BAY SAINTE ELAINE



TRACT 42570 - Portion of Blocks 22, and 23, Ship Shoal Area, Terrebonne Parish, Louisiana

All of the lands now or formerly constituting the beds and bottoms of all water bodies of every nature and description as to which title is vested in the State of Louisiana, together with all islands arising therein and other lands formed by accretion or by reliction, where allowed by law, excepting tax adjudicated lands, and not presently under mineral lease on March 14, 2012, situated in Terrebonne Parish, Louisiana, and more particularly described as follows: Beginning at a point on the Western boundary of State of Louisiana State Lease No. 3403, as amended, having Coordinates of X = 2,149,200.00 and Y = 155,834.99; thence West 13,814.83 feet to a point having Coordinates of X = 2,135,385.17 and Y = 155,834.99; thence North 5,898.97 feet to a point having Coordinates of X = 2,135,385.17 and Y = 161,733.96; thence East 15,054.02 feet to a point having Coordinates of X = 2,150,439.19 and Y = 161,733.96, said point being the Northwest corner of State of Louisiana State Lease No. 16103, as amended; thence South 00 degrees 00 minutes 45 seconds East 3,693.96 feet on and along the Western boundary of said State of Louisiana State Lease No. 16103, as amended, to a point having Coordinates of X = 2,150,440.00 and Y = 158,040.00, said point being a Southwest corner of said State of Louisiana State Lease No. 16103, as amended, said point also being a Northwest corner of said State of Louisiana State Lease No. 3403, as amended; thence South 29 degrees 21 minutes 06 seconds West 2,529.76 feet on and along the Western boundary of said State of Louisiana State Lease No. 3403, as amended, to the Point of Beginning, containing approximately **1,800 acres**, all as more particularly outlined on a plat on file in the Office of Mineral Resources, Department of Natural Resources. All bearings, distances and coordinates are based on Louisiana Coordinate System of 1927, (North or South Zone), where applicable.

NOTE: The above description of the Tract nominated for lease has been provided and corrected, where required, exclusively by the nomination party. Any mineral lease selected from this Tract and awarded by the Louisiana State Mineral and Energy Board shall be without warranty of any kind, either express, implied, or statutory, including, but not limited to, the implied warranties of merchantability and fitness for a particular purpose. Should the mineral lease awarded by the Louisiana State Mineral and Energy Board be subsequently modified, cancelled or abrogated due to the existence of conflicting leases, operating agreements, private claims or other future obligations or conditions which may affect all or any portion of the leased Tract, it shall not relieve the Lessee of the obligation to pay any bonus due thereon to the Louisiana State Mineral and Energy Board, nor shall the Louisiana State Mineral and Energy Board be obligated to refund any consideration paid by the Lessor prior to such modification, cancellation, or abrogation, including, but not limited to, bonuses, rentals and royalties.

NOTE: The State of Louisiana does hereby reserve, and this lease shall be subject to, the imprescriptible right of surface use in the nature of a

servitude in favor of the Department of Natural Resources, including its Offices and Commissions, for the sole purpose of implementing, constructing, servicing and maintaining approved coastal zone management and/or restoration projects. Utilization of any and all rights derived under this lease by the mineral lessee, its agents, successors or assigns, shall not interfere with nor hinder the reasonable surface use by the Department of Natural Resources, its Offices or Commissions, as herein above reserved.

Applicant: ROBERT A. SCHROEDER, INC.

Bidder	Cash Payment	Price/ Acre	Rental	Oil	Gas	Other

