

TRACT 42571 - Portion of Blocks 22, and 41, Ship Shoal Area, Terrebonne Parish, Louisiana

All of the lands now or formerly constituting the beds and bottoms of all water bodies of every nature and description as to which title is vested in the State of Louisiana, together with all islands arising therein and other lands formed by accretion or by reliction, where allowed by law, excepting tax adjudicated lands, and not presently under mineral lease on March 14, 2012, situated in Terrebonne Parish, Louisiana, and more particularly described as follows: Beginning at a point on the western boundary of State of Louisiana State Lease No. 3403, as amended, having Coordinates of X = 2,149,200.00 and Y = 155,834.99; Thence on and along the Western and Southern boundaries of said State of Louisiana State Lease No. 3403, as amended, to following courses and distances, to wit: South 37 degrees 48 minutes 21 seconds East 2,895.91 feet to a point having Coordinates of X = 2,150,975.16 and Y = 153,546.96; and East 1,949.70 feet to a point having Coordinates of X = 2,152,924.85 and Y = 153,546.96, said point being the southeast corner of said State of Louisiana State Lease No. 3403, as amended, said point also being the Southwest corner of State of Louisiana State Lease No. 16244, as amended; Thence on and along the Southern, Eastern and Northern boundaries of said State of Louisiana State Lease No. 16244, as amended, the following courses and distances, to wit: East 666.55 feet to a point having Coordinates of X = 2,153,591.40 and Y = 153,546.96, said point being the Southeast corner of said State of Louisiana State Lease No. 16244, as amended; North 1,317.84 feet to a point having Coordinates of X = 2,153,591.40 and Y = 154,864.80, said point being a Northeast corner of said State of Louisiana State Lease No. 16244, as amended; and North 49 degrees 15 minutes 28 seconds West 890.31 feet to a point having Coordinates of X = 2,152,916.85 and Y = 155,445.87, said point being a Northeast corner of said State of Louisiana State Lease No. 16244, as amended, said point also being on the Eastern boundary of said State of Louisiana State Lease No. 3403, as amended; Thence North 00 degrees 14 minutes 29 seconds West 1,020.39 feet on and along said Eastern boundary of said State of Louisiana State Lease No. 3403, as amended, to a point having Coordinates of X = 2,152,912.56 and Y = 156,466.25, said point being a Northeast corner of said State of Louisiana State Lease No. 3403, as amended, said point also being on the Southern boundary of State of Louisiana State Lease No. 16103, as amended; Thence on and along the Southern and Eastern boundary of said State of Louisiana State Lease No. 16103, as amended, the following courses and distances, to wit: Easterly approximately 699 feet and Northerly approximately 5,268 feet to a point being the Northeast corner of said State of Louisiana State Lease No. 16103, as amended; Thence East approximately 5,000.00 feet to a point having Coordinates of X = 2,158,611.64 and Y = 161,733.96, Thence South 14,330.53 feet to a point having Coordinates of X = 2,158,611.64 and Y = 147,403.43, Thence West 10,829.64 feet to a point having Coordinates of X = 2,147,782.00 and Y = 147,403.43, said point being the Southernmost Southeast corner of State of Louisiana State Lease No. 11233, as amended; Thence on and along the Eastern and Northern boundaries of said State of Louisiana State Lease No. 11233, as amended, the following courses and

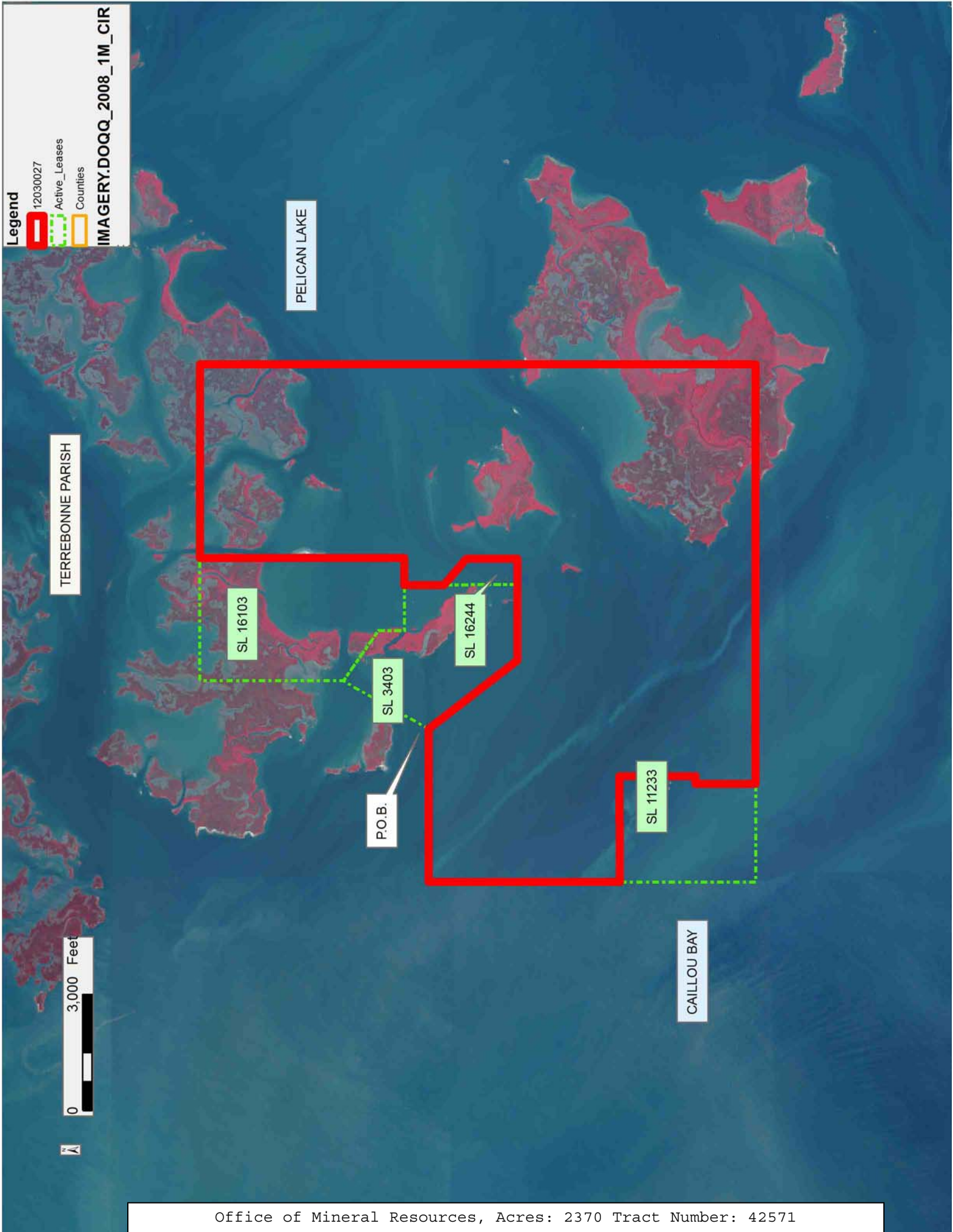
distances, to wit: North 1,550.00 feet to a point having Coordinates of X = 2,147,782.90 and Y = 148,953.43; East 200.00 feet to a point having Coordinates of X = 2,147,982.90 and Y = 148,953.43; North 1,967.01 feet to a point having Coordinates of X = 2,147,982.90 and Y = 150,920.44 said point being the Northeast corner of State of Louisiana State Lease No. 11233, as amended; and South 89 degrees 45 minutes 31 seconds West 2,729.75 feet to a point having Coordinates of X = 2,145,253.17 and Y = 150,908.94, said point being the Northwest corner of said State of Louisiana State Lease No. 11233, as amended; Thence North 4,926.05 feet to a point having Coordinates of X = 2,145,253.17 and Y = 155,834.99; Thence East 3,946.83 feet to the Point of Beginning, **LESS AND EXCEPT** any Sixteenth section lands that may be contained within the above described tract, containing approximately **2,370 acres**, all as more particularly outlined on a plat on file in the Office of Mineral Resources, Department of Natural Resources. All bearings, distances and coordinates are based on Louisiana Coordinate System of 1927, (North or South Zone), where applicable.

NOTE: The above description of the Tract nominated for lease has been provided and corrected, where required, exclusively by the nomination party. Any mineral lease selected from this Tract and awarded by the Louisiana State Mineral and Energy Board shall be without warranty of any kind, either express, implied, or statutory, including, but not limited to, the implied warranties of merchantability and fitness for a particular purpose. Should the mineral lease awarded by the Louisiana State Mineral and Energy Board be subsequently modified, cancelled or abrogated due to the existence of conflicting leases, operating agreements, private claims or other future obligations or conditions which may affect all or any portion of the leased Tract, it shall not relieve the Lessee of the obligation to pay any bonus due thereon to the Louisiana State Mineral and Energy Board, nor shall the Louisiana State Mineral and Energy Board be obligated to refund any consideration paid by the Lessor prior to such modification, cancellation, or abrogation, including, but not limited to, bonuses, rentals and royalties.

NOTE: The State of Louisiana does hereby reserve, and this lease shall be subject to, the imprescriptible right of surface use in the nature of a servitude in favor of the Department of Natural Resources, including its Offices and Commissions, for the sole purpose of implementing, constructing, servicing and maintaining approved coastal zone management and/or restoration projects. Utilization of any and all rights derived under this lease by the mineral lessee, its agents, successors or assigns, shall not interfere with nor hinder the reasonable surface use by the Department of Natural Resources, its Offices or Commissions, as herein above reserved.

Applicant: ROBERT A. SCHROEDER, INC.

Bidder	Cash Payment	Price/ Acre	Rental	Oil	Gas	Other



TRACT 42572 - Portion of Blocks 22, 23, 40, and 41, Ship Shoal Area, Terrebonne Parish, Louisiana

All of the lands now or formerly constituting the beds and bottoms of all water bodies of every nature and description as to which title is vested in the State of Louisiana, together with all islands arising therein and other lands formed by accretion or by reliction, where allowed by law, excepting tax adjudicated lands, and not presently under mineral lease on March 14, 2012, situated in Terrebonne Parish, Louisiana, and more particularly described as follows: Beginning at the northwest corner of State of Louisiana State Lease No. 11233, as amended, having Coordinates of X = 2,145,253.17 and Y = 150,908.94; thence South 3,505.51 feet on and along the western boundary of said State of Louisiana State Lease No. 11233, as amended, to a point having Coordinates of X = 2,145,253.17 and Y = 147,403.43; thence West 9,868.00 feet to a point having Coordinates of X = 2,135,385.17 and Y = 147,403.43; thence North 8,431.56 feet to a point having Coordinates of X = 2,135,385.17 and Y = 155,834.99; thence East 9,868.00 feet to a point having Coordinates of X = 2,145,253.17 and Y = 155,834.99; thence South 4,926.05 feet to the Point of Beginning, containing approximately **1,910.07 acres**, all as more particularly outlined on a plat on file in the Office of Mineral Resources, Department of Natural Resources. All bearings, distances and coordinates are based on Louisiana Coordinate System of 1927, (North or South Zone), where applicable.

NOTE: The above description of the Tract nominated for lease has been provided and corrected, where required, exclusively by the nomination party. Any mineral lease selected from this Tract and awarded by the Louisiana State Mineral and Energy Board shall be without warranty of any kind, either express, implied, or statutory, including, but not limited to, the implied warranties of merchantability and fitness for a particular purpose. Should the mineral lease awarded by the Louisiana State Mineral and Energy Board be subsequently modified, cancelled or abrogated due to the existence of conflicting leases, operating agreements, private claims or other future obligations or conditions which may affect all or any portion of the leased Tract, it shall not relieve the Lessee of the obligation to pay any bonus due thereon to the Louisiana State Mineral and Energy Board, nor shall the Louisiana State Mineral and Energy Board be obligated to refund any consideration paid by the Lessor prior to such modification, cancellation, or abrogation, including, but not limited to, bonuses, rentals and royalties.

NOTE: The State of Louisiana does hereby reserve, and this lease shall be subject to, the imprescriptible right of surface use in the nature of a servitude in favor of the Department of Natural Resources, including its Offices and Commissions, for the sole purpose of implementing, constructing, servicing and maintaining approved coastal zone management and/or restoration projects. Utilization of any and all rights derived under this lease by the mineral lessee, its agents, successors or assigns, shall not interfere with nor hinder the reasonable surface use by the

Department of Natural Resources, its Offices or Commissions, as herein above reserved.

Applicant: ROBERT A. SCHROEDER, INC.

Bidder	Cash Payment	Price/ Acre	Rental	Oil	Gas	Other

Legend

12030028

Blocks

Active Leases

