

**TRACT 42601 - LaSalle and Rapides Parishes, Louisiana**

All of the lands now or formerly constituting the beds and bottoms of all water bodies of every nature and description as to which title is vested in the State of Louisiana, together with all islands arising therein and other lands formed by accretion or by reliction, where allowed by law, excepting tax adjudicated lands, and not presently under mineral lease on May 9, 2012, situated in LaSalle and Rapides Parishes, Louisiana, and more particularly described as follows: All of Section 16, Township 5 North, Range 3 East, LaSalle and Rapides Parishes, Louisiana, lying East of the centerline of Big Saline Bayou, (This tract includes only waterbottoms located within the Dewey W. Wills Wildlife Management Area), containing approximately **6.43 acres**, all as more particularly outlined on a plat on file in the Office of Mineral Resources, Department of Natural Resources. All bearings, distances and coordinates are based on Louisiana Coordinate System of 1927, (North or South Zone), where applicable.

NOTE: The above description of the Tract nominated for lease has been provided and corrected, where required, exclusively by the nomination party. Any mineral lease selected from this Tract and awarded by the Louisiana State Mineral and Energy Board shall be without warranty of any kind, either express, implied, or statutory, including, but not limited to, the implied warranties of merchantability and fitness for a particular purpose. Should the mineral lease awarded by the Louisiana State Mineral and Energy Board be subsequently modified, cancelled or abrogated due to the existence of conflicting leases, operating agreements, private claims or other future obligations or conditions which may affect all or any portion of the leased Tract, it shall not relieve the Lessee of the obligation to pay any bonus due thereon to the Louisiana State Mineral and Energy Board, nor shall the Louisiana State Mineral and Energy Board be obligated to refund any consideration paid by the Lessor prior to such modification, cancellation, or abrogation, including, but not limited to, bonuses, rentals and royalties.

NOTE: The mineral lease is located in the Dewey W. Wills WMA under the jurisdiction of the Louisiana Department of Wildlife and Fisheries which has promulgated rules and regulations for the protection of game and wildlife on the aforesaid Tract and, therefore, shall be subject to said rules and regulations, a copy of which shall be attached to the mineral lease. In addition to the specific rules and regulations applicable, the following shall apply regarding operations under this mineral lease:

NOTE: No activities will be allowed without written authorization from the Louisiana Department of Wildlife and Fisheries.

NOTE: Proposed projects will be evaluated on a case by case basis. Modifications to proposed project features including but not limited to access routes, spoil placement, well sites, flowlines and appurtenant structures may be required by the Department of Wildlife and Fisheries.

NOTE: Compliance with the said WMA regulations will be required unless otherwise specified by the Department of Wildlife and Fisheries.

NOTE: Compensatory mitigation will be required to offset unavoidable wetland impacts.

NOTE: Removal of all structures, facilities and equipment will be required within 120 days of abandonment unless otherwise agreed to in writing by the Louisiana Department of Wildlife and Fisheries.

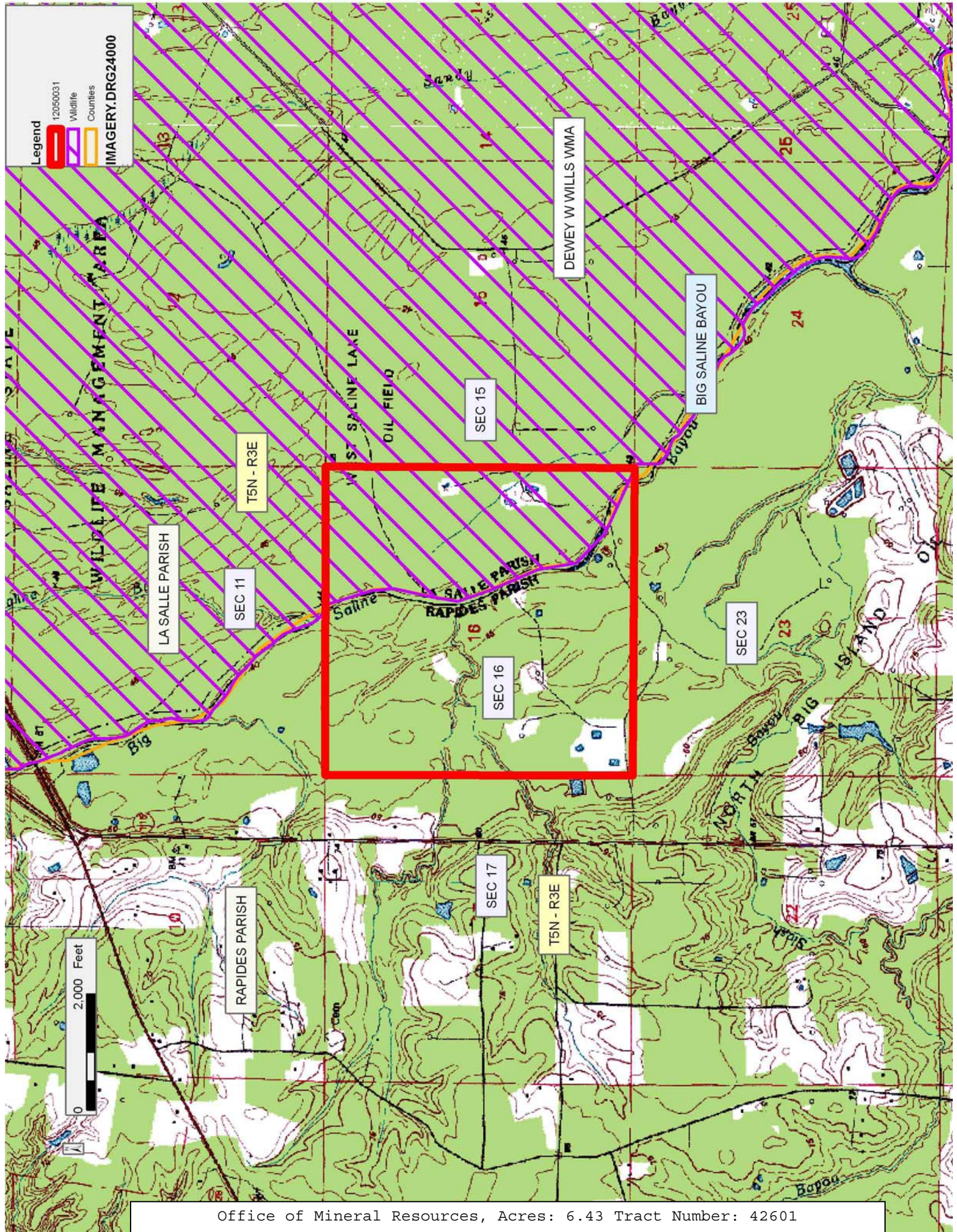
NOTE: No activities will be allowed during the hunting season unless approved by the Department.

NOTE: Prior to submitting applications for wetland permits to Federal and State permitting agencies the leaseholder shall coordinate project details with the Department of Wildlife and Fisheries. Contact person for the Department will be Mike Windham at (504) 284-5268.

NOTE: Additionally, the Department will require a minimum bonus of \$150.00 per acre and a minimum royalty of 25%.

Applicant: THEOPHILUS OIL, GAS & LAND SERVICES, LLC

Bidder	Cash Payment	Price/Acre	Rental	Oil	Gas	Other



Legend  
12050031  
Wildlife  
Counties  
IMAGERY.DRG24000

DEWEY WILLS WMA

BIG SALINE BAYOU

LA SALLE PARISH

SEC 11

T5N - R3E

SEC 15

SEC 16

SEC 23

RAPIDES PARISH

SEC 17

T5N - R3E

0 2,000 Feet

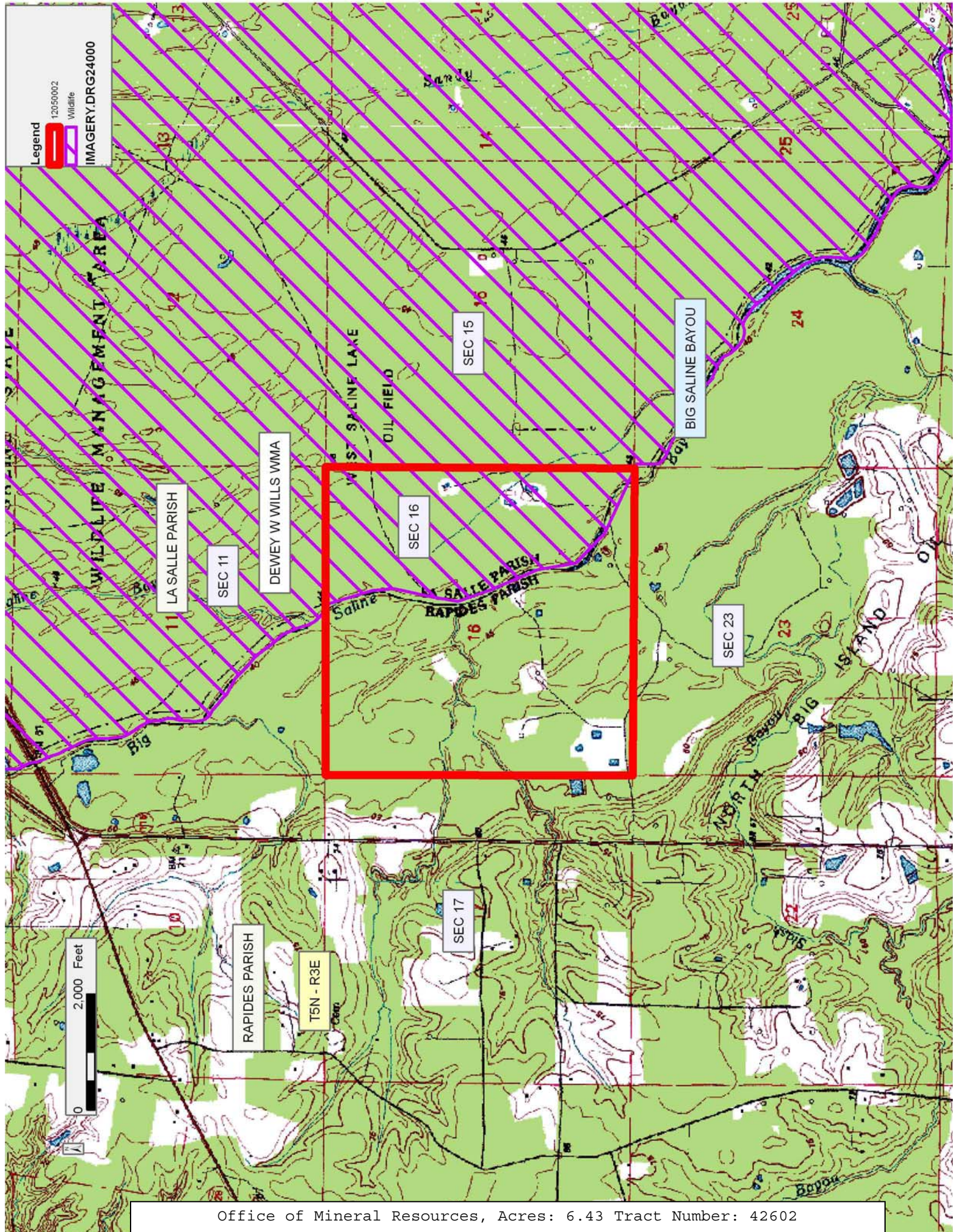
**TRACT 42602 - Lasalle and Rapides Parishes, Louisiana**

All of the lands now or formerly constituting the beds and bottoms of all water bodies of every nature and description as to which title is vested in the State of Louisiana, together with all islands arising therein and other lands formed by accretion or by reliction, where allowed by law, excepting tax adjudicated lands, and not presently under mineral lease on May 9, 2012, situated in Lasalle and Rapides Parishes, Louisiana, and more particularly described as follows: All of Section 16, Township 5 North, Range 3 East, LaSalle and Rapides Parishes, Louisiana, lying West of the centerline of Big Saline Bayou (This tract includes only waterbottoms claimed and owned by the state and specifically excludes any portion of the Dewey W. Wills Wildlife Management Area), containing approximately **6.43 acres**, all as more particularly outlined on a plat on file in the Office of Mineral Resources, Department of Natural Resources. All bearings, distances and coordinates are based on Louisiana Coordinate System of 1927, (North or South Zone), where applicable.

NOTE: The above description of the Tract nominated for lease has been provided and corrected, where required, exclusively by the nomination party. Any mineral lease selected from this Tract and awarded by the Louisiana State Mineral and Energy Board shall be without warranty of any kind, either express, implied, or statutory, including, but not limited to, the implied warranties of merchantability and fitness for a particular purpose. Should the mineral lease awarded by the Louisiana State Mineral and Energy Board be subsequently modified, cancelled or abrogated due to the existence of conflicting leases, operating agreements, private claims or other future obligations or conditions which may affect all or any portion of the leased Tract, it shall not relieve the Lessee of the obligation to pay any bonus due thereon to the Louisiana State Mineral and Energy Board, nor shall the Louisiana State Mineral and Energy Board be obligated to refund any consideration paid by the Lessor prior to such modification, cancellation, or abrogation, including, but not limited to, bonuses, rentals and royalties.

Applicant: THEOPHILUS OIL, GAS & LAND SERVICES, LLC

Bidder	Cash Payment	Price/Acre	Rental	Oil	Gas	Other



Legend  
12050002  
Wildlife  
IMAGERY.DRG24000

2,000 Feet

**TRACT 42603 - - Avoyelles Parish, Louisiana**

The State Mineral and Energy Board acting on behalf of the Avoyelles Parish School Board, pursuant to Resolution(s) adopted by that (those) body(ies) and in accordance with Louisiana Revised Statutes 30:121-136 and 151-156, as amended, and Article XIV, Section 16(A)(9) and (B) of the Louisiana Constitution of 1974, as same may be continued and promulgated in proper statutory form and, further, amended from time to time, advertises the lands not under mineral lease on May 9, 2012, excluding the beds and bottoms of all navigable water bodies located within the following: All or a portion of Section 16, Township 3 North, Range 4 East in Avoyelles Parish, Louisiana, containing **647.46 acres**, all as more particularly outlined on a plat on file in the Office of Mineral Resources, Department of Natural Resources. All bearings, distances and coordinates are based on Louisiana Coordinate System of 1927, (North or South Zone).

NOTE: The above description of the Tract nominated for lease has been provided and corrected, where required, exclusively by the nomination party. Any mineral lease selected from this Tract and awarded by the Louisiana State Mineral and Energy Board shall be without warranty of any kind, either express, implied, or statutory, including, but not limited to, the implied warranties of merchantability and fitness for a particular purpose. Should the mineral lease awarded by the Louisiana State Mineral and Energy Board be subsequently modified, cancelled or abrogated due to the existence of conflicting leases, operating agreements, private claims or other future obligations or conditions which may affect all or any portion of the leased Tract, it shall not relieve the Lessee of the obligation to pay any bonus due thereon to the Louisiana State Mineral and Energy Board, nor shall the Louisiana State Mineral and Energy Board be obligated to refund any consideration paid by the Lessor prior to such modification, cancellation, or abrogation, including, but not limited to, bonuses, rentals and royalties.

NOTE: A bonus of \$350 per net mineral acre covered by the lease for a primary term of three (3) years with the option to extend the primary term for two (2) additional years at \$300 per net mineral acre..

NOTE: A minimum royalty payment of 22.5% at the well head shall be required with no expense deductions.

NOTE: No surface activities shall take place on the property without prior written consent of the Avoyelles Parish School Board.

Applicant: AVOYELLES PARISH SCHOOL BOARD

Bidder	Cash Payment	Price/Acre	Rental	Oil	Gas	Other

Legend

12050093

IMAGERY.DRG24000

AVOUELLES PARISH

2,000 Feet

SEC 9

T3N - R4E

SEC 16

SEC 17

SEC 15

SEC 21

2

22

RED



**TRACT 42604 - - Avoyelles Parish, Louisiana**

The State Mineral and Energy Board acting on behalf of the Avoyelles Parish School Board, pursuant to Resolution(s) adopted by that (those) body(ies) and in accordance with Louisiana Revised Statutes 30:121-136 and 151-156, as amended, and Article XIV, Section 16(A)(9) and (B) of the Louisiana Constitution of 1974, as same may be continued and promulgated in proper statutory form and, further, amended from time to time, advertises the lands not under mineral lease on May 9, 2012, excluding the beds and bottoms of all navigable water bodies located within the following: All or a portion of Section 16, Township 2 North, Range 5 East in Avoyelles Parish, Louisiana, **LESS AND EXCEPT 10.12 acres**, containing **628.952 acres**, all as more particularly outlined on a plat on file in the Office of Mineral Resources, Department of Natural Resources. All bearings, distances and coordinates are based on Louisiana Coordinate System of 1927, (North or South Zone).

NOTE: The above description of the Tract nominated for lease has been provided and corrected, where required, exclusively by the nomination party. Any mineral lease selected from this Tract and awarded by the Louisiana State Mineral and Energy Board shall be without warranty of any kind, either express, implied, or statutory, including, but not limited to, the implied warranties of merchantability and fitness for a particular purpose. Should the mineral lease awarded by the Louisiana State Mineral and Energy Board be subsequently modified, cancelled or abrogated due to the existence of conflicting leases, operating agreements, private claims or other future obligations or conditions which may affect all or any portion of the leased Tract, it shall not relieve the Lessee of the obligation to pay any bonus due thereon to the Louisiana State Mineral and Energy Board, nor shall the Louisiana State Mineral and Energy Board be obligated to refund any consideration paid by the Lessor prior to such modification, cancellation, or abrogation, including, but not limited to, bonuses, rentals and royalties.

NOTE: A bonus of \$350 per net mineral acre covered by the lease for a primary term of three (3) years with the option to extend the primary term for two (2) additional years at \$300 per net mineral acre.

NOTE: A minimum royalty payment of 22.5% at the well head shall be required with no expense deductions.

NOTE: No surface activities shall take place on the property without prior written consent of the Avoyelles Parish School Board.

Applicant: AVOYELLES PARISH SCHOOL BOARD

Bidder	Cash Payment	Price/Acre	Rental	Oil	Gas	Other

Legend

12050095

Wildlife

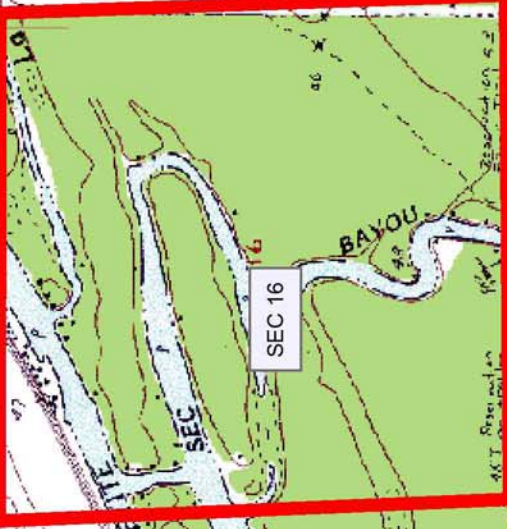
IMAGERY.DRG24000

2,000 Feet

AVOYELLES PARISH

SEC 9

T2N - R5E



SEC 17

SEC 16

SEC 15

SEC 21

SPRING BAYOU WMA

**TRACT 42605 - - Avoyelles Parish, Louisiana**

The State Mineral and Energy Board acting on behalf of the Avoyelles Parish School Board, pursuant to Resolution(s) adopted by that (those) body(ies) and in accordance with Louisiana Revised Statutes 30:121-136 and 151-156, as amended, and Article XIV, Section 16(A)(9) and (B) of the Louisiana Constitution of 1974, as same may be continued and promulgated in proper statutory form and, further, amended from time to time, advertises the lands not under mineral lease on May 9, 2012, excluding the beds and bottoms of all navigable water bodies located within the following: All or a portion of Section 16, Township 1 North, Range 6 East in Avoyelles Parish, Louisiana, containing approximately **639.36 acres**, all as more particularly outlined on a plat on file in the Office of Mineral Resources, Department of Natural Resources. All bearings, distances and coordinates are based on Louisiana Coordinate System of 1927, (North or South Zone).

NOTE: The above description of the Tract nominated for lease has been provided and corrected, where required, exclusively by the nomination party. Any mineral lease selected from this Tract and awarded by the Louisiana State Mineral and Energy Board shall be without warranty of any kind, either express, implied, or statutory, including, but not limited to, the implied warranties of merchantability and fitness for a particular purpose. Should the mineral lease awarded by the Louisiana State Mineral and Energy Board be subsequently modified, cancelled or abrogated due to the existence of conflicting leases, operating agreements, private claims or other future obligations or conditions which may affect all or any portion of the leased Tract, it shall not relieve the Lessee of the obligation to pay any bonus due thereon to the Louisiana State Mineral and Energy Board, nor shall the Louisiana State Mineral and Energy Board be obligated to refund any consideration paid by the Lessor prior to such modification, cancellation, or abrogation, including, but not limited to, bonuses, rentals and royalties.

NOTE: A bonus of \$350 per net mineral acre covered by the lease for a primary term of three (3) years with the option to extend the primary term for two (2) additional years at \$300 per net mineral acre.

NOTE: A minimum royalty payment of 22.5% at the well head shall be required with no expense deductions.

NOTE: No surface activities shall take place on the property without prior written consent of the Avoyelles Parish School Board.

Applicant: AVOYELLES PARISH SCHOOL BOARD

Bidder	Cash Payment	Price/Acre	Rental	Oil	Gas	Other

Legend

12050094

Wildlife

IMAGERY.DRG24000

2,000 Feet

AVOYELLES PARISH

SEC 9

TIN - RGE

Lac Patassa

SEC 16

SEC 15

SEC 17

SEC 21

POMME DE TERRE WMA

POMME DE TERRE WMA  
WILDLIFE MANAGEMENT AREA

Mt Zion  
Cem

**TRACT 42606 - Acadia and Lafayette Parishes, Louisiana**

All of the lands now or formerly constituting the beds and bottoms of all water bodies of every nature and description as to which title is vested in the State of Louisiana, together with all islands arising therein and other lands formed by accretion or by reliction, where allowed by law, excepting tax adjudicated lands, and not presently under mineral lease on May 9, 2012, situated in Acadia and Lafayette Parishes, Louisiana, and more particularly described as follows: Beginning at a point having Coordinates of X = 1,712,400.00 and Y = 559,400.00; thence West 5,200.00 feet to a point having Coordinates of X = 1,707,200.00 and Y = 559,400.00; thence North 3,600.00 feet to a point having Coordinates of X = 1,707,200.00 and Y = 563,000.00; thence East 3,756.58 feet to a point on the Western boundary of State Lease No. 20595 having Coordinates of X = 1,710,956.58 and Y = 563,000.00; thence along the boundary of said State Lease No. 20595 the following courses: South 50 degrees 02 minutes 56 seconds West 152.07 feet to a point having Coordinates of X = 1,710,840.00 and Y = 562,902.35; South 72 degrees 47 minutes 45 seconds East 1,267.51 feet to a point having Coordinates of X = 1,712,050.80 and Y = 562,527.45; and North 48 degrees 48 minutes 48 seconds East 464.00 feet to a point having Coordinates of X = 1,712,400.00 and Y = 562,833.01; thence South 3,433.01 feet to the point of beginning, containing approximately **5 acres**, all as more particularly outlined on a plat on file in the Office of Mineral Resources, Department of Natural Resources. All bearings, distances and coordinates are based on Louisiana Coordinate System of 1927, (North or South Zone), where applicable.

NOTE: The above description of the Tract nominated for lease has been provided and corrected, where required, exclusively by the nomination party. Any mineral lease selected from this Tract and awarded by the Louisiana State Mineral and Energy Board shall be without warranty of any kind, either express, implied, or statutory, including, but not limited to, the implied warranties of merchantability and fitness for a particular purpose. Should the mineral lease awarded by the Louisiana State Mineral and Energy Board be subsequently modified, cancelled or abrogated due to the existence of conflicting leases, operating agreements, private claims or other future obligations or conditions which may affect all or any portion of the leased Tract, it shall not relieve the Lessee of the obligation to pay any bonus due thereon to the Louisiana State Mineral and Energy Board, nor shall the Louisiana State Mineral and Energy Board be obligated to refund any consideration paid by the Lessor prior to such modification, cancellation, or abrogation, including, but not limited to, bonuses, rentals and royalties.

Applicant: JIL EXPLORATION, INC.

Bidder	Cash Payment	Price/Acre	Rental	Oil	Gas	Other



Legend

- 12050012
- Active\_Leases
- Counties

IMAGERY.DOQQ\_2008\_1M\_CIR

0 2,000 Feet



ACADIA PARISH

T9S - R2E

T10S - R2E

LAFAYETTE PARISH

SL 20595

P.O.B.

BAYOU QUEUE DE TORTUE

**TRACT 42607 - Acadia and Lafayette Parishes, Louisiana**

All of the lands now or formerly constituting the beds and bottoms of all water bodies of every nature and description as to which title is vested in the State of Louisiana, together with all islands arising therein and other lands formed by accretion or by reliction, where allowed by law, excepting tax adjudicated lands, and not presently under mineral lease on May 9, 2012, situated in Acadia and Lafayette Parishes, Louisiana, and more particularly described as follows: Beginning at a point having Coordinates of X = 1,712,400.00 and Y = 559,400.00; thence South 6,600.00 feet to a point having Coordinates of X = 1,712,400.00 and Y = 552,800.00; thence West 5,200.00 feet to a point having Coordinates of X = 1,707,200.00 and Y = 552,800.00; thence North 6,600.00 feet to a point having Coordinates of X = 1,707,200.00 and Y = 559,400.00; thence East 5,200.00 feet to the Point of Beginning, containing approximately **9 acres**, all as more particularly outlined on a plat on file in the Office of Mineral Resources, Department of Natural Resources. All bearings, distances and coordinates are based on Louisiana Coordinate System of 1927, (North or South Zone), where applicable.

NOTE: The above description of the Tract nominated for lease has been provided and corrected, where required, exclusively by the nomination party. Any mineral lease selected from this Tract and awarded by the Louisiana State Mineral and Energy Board shall be without warranty of any kind, either express, implied, or statutory, including, but not limited to, the implied warranties of merchantability and fitness for a particular purpose. Should the mineral lease awarded by the Louisiana State Mineral and Energy Board be subsequently modified, cancelled or abrogated due to the existence of conflicting leases, operating agreements, private claims or other future obligations or conditions which may affect all or any portion of the leased Tract, it shall not relieve the Lessee of the obligation to pay any bonus due thereon to the Louisiana State Mineral and Energy Board, nor shall the Louisiana State Mineral and Energy Board be obligated to refund any consideration paid by the Lessor prior to such modification, cancellation, or abrogation, including, but not limited to, bonuses, rentals and royalties.

Applicant: JIL EXPLORATION, INC.

Bidder	Cash Payment	Price/Acre	Rental	Oil	Gas	Other

Legend

12050013

Counties

IMAGERY.DOQQ\_2008\_1M\_CIR

ACADIA PARISH

LAFAYETTE PARISH

P.O.B.

BAYOU QUEJUE DE TORTUE

T10S - R2E

0 2,000 Feet



**TRACT 42608 - Acadia and Lafayette Parishes, Louisiana**

All of the lands now or formerly constituting the beds and bottoms of all water bodies of every nature and description as to which title is vested in the State of Louisiana, together with all islands arising therein and other lands formed by accretion or by reliction, where allowed by law, excepting tax adjudicated lands, and not presently under mineral lease on May 9, 2012, situated in Acadia and Lafayette Parishes, Louisiana, and more particularly described as follows: Beginning at a point having Coordinates of X = 1,712,400.00 and Y = 552,800.00; thence South 6,300.00 feet to a point having Coordinates of X = 1,712,400.00 and Y = 546,500.00; thence West 5,094.00 feet to a point having Coordinates of X = 1,707,306.00 and Y = 546,500.00; thence North 08 degrees 43 minutes 44 seconds West 13.15 feet to a point having Coordinates of X = 1,707,304.00 and Y = 546,513.00; North 14 degrees 13 minutes 11 seconds West 396.97 feet to a point having Coordinates of X = 1,707,206.49 and Y = 546,897.81; and North 18 degrees 52 minutes 36 seconds West 20.05 feet to a point having Coordinates of X = 1,707,200.00 and Y = 546,916.78; thence North 5,883.22 feet to a point having Coordinates of X = 1,707,200.00 and Y = 552,800.00; thence East 5,200.00 feet to the point of beginning, **LESS AND EXCEPT** any portion of State Lease 10754, as amended that may lie within the above described tract. Nominated tract containing approximately **10 acres**, all as more particularly outlined on a plat on file in the Office of Mineral Resources, Department of Natural Resources. All bearings, distances and coordinates are based on Louisiana Coordinate System of 1927, (North or South Zone), where applicable.

NOTE: The above description of the Tract nominated for lease has been provided and corrected, where required, exclusively by the nomination party. Any mineral lease selected from this Tract and awarded by the Louisiana State Mineral and Energy Board shall be without warranty of any kind, either express, implied, or statutory, including, but not limited to, the implied warranties of merchantability and fitness for a particular purpose. Should the mineral lease awarded by the Louisiana State Mineral and Energy Board be subsequently modified, cancelled or abrogated due to the existence of conflicting leases, operating agreements, private claims or other future obligations or conditions which may affect all or any portion of the leased Tract, it shall not relieve the Lessee of the obligation to pay any bonus due thereon to the Louisiana State Mineral and Energy Board, nor shall the Louisiana State Mineral and Energy Board be obligated to refund any consideration paid by the Lessor prior to such modification, cancellation, or abrogation, including, but not limited to, bonuses, rentals and royalties.

Applicant: JIL EXPLORATION, INC.

Bidder	Cash Payment	Price/Acre	Rental	Oil	Gas	Other

Legend

- 12050014
- Active\_Leases
- Counties

IMAGERY.DOQQ\_2008\_1M\_CIR

LAFAYETTE PARISH

BAYOU QUEUE DE TORTUE

P.O.B.

ACADIA PARISH

T10S - R2E

SL 10754

0 2,000 Feet



**TRACT 42609 - St. Bernard Parish, Louisiana**

All of the lands now or formerly constituting the beds and bottoms of all water bodies of every nature and description as to which title is vested in the State of Louisiana, together with all islands arising therein and other lands formed by accretion or by reliction, where allowed by law, excepting tax adjudicated lands, and not presently under mineral lease on May 9, 2012, situated in St. Bernard Parish, Louisiana, and more particularly described as follows: Beginning at a point having Coordinates of X = 2,593,321.00 and Y = 498,043.00; thence East 15,580.00 feet to a point having Coordinates of X = 2,608,901.00 and Y = 498,043.00; thence South 6,193.00 feet to a point having Coordinates of X = 2,608,901.00 and Y = 491,850.00; thence West 15,580.00 feet to a point having Coordinates of X = 2,593,321.00 and Y = 491,850.00; thence North 6,193.00 feet to the point of beginning, containing approximately **1,854 acres**, all as more particularly outlined on a plat on file in the Office of Mineral Resources, Department of Natural Resources. All bearings, distances and coordinates are based on Louisiana Coordinate System of 1927, (North or South Zone), where applicable.

NOTE: The above description of the Tract nominated for lease has been provided and corrected, where required, exclusively by the nomination party. Any mineral lease selected from this Tract and awarded by the Louisiana State Mineral and Energy Board shall be without warranty of any kind, either express, implied, or statutory, including, but not limited to, the implied warranties of merchantability and fitness for a particular purpose. Should the mineral lease awarded by the Louisiana State Mineral and Energy Board be subsequently modified, cancelled or abrogated due to the existence of conflicting leases, operating agreements, private claims or other future obligations or conditions which may affect all or any portion of the leased Tract, it shall not relieve the Lessee of the obligation to pay any bonus due thereon to the Louisiana State Mineral and Energy Board, nor shall the Louisiana State Mineral and Energy Board be obligated to refund any consideration paid by the Lessor prior to such modification, cancellation, or abrogation, including, but not limited to, bonuses, rentals and royalties.

NOTE: The Office of Mineral Resources will require a minimum bonus of \$230 per acre and a minimum royalty of 23%.

NOTE: The State of Louisiana does hereby reserve, and this lease shall be subject to, the imprescriptible right of surface use in the nature of a servitude in favor of the Department of Natural Resources, including its Offices and Commissions, for the sole purpose of implementing, constructing, servicing and maintaining approved coastal zone management and/or restoration projects. Utilization of any and all rights derived under this lease by the mineral lessee, its agents, successors or assigns, shall not interfere with nor hinder the reasonable surface use by the Department of Natural Resources, its Offices or Commissions, as herein above reserved.

Applicant: CRESCENT RESOURCES, L.L.C.

Bidder	Cash Payment	Price/Acre	Rental	Oil	Gas	Other



Legend

12050011

Counties

IMAGERY.DOQQ\_2008\_1M\_CIR

ST BERNARD PARISH

T12S - R18E

FALSE MOUTH BAY

0 2,000 Feet

P.O.B.

S - R17E

**TRACT 42610 - Assumption Parish, Louisiana**

All of the lands now or formerly constituting the beds and bottoms of all water bodies of every nature and description as to which title is vested in the State of Louisiana, together with all islands arising therein and other lands formed by accretion or by reliction, where allowed by law, excepting tax adjudicated lands, and not presently under mineral lease on May 9, 2012, situated in Assumption Parish, Louisiana, and more particularly described as follows: Beginning at a point having Coordinates of X = 2,046,214.99 and Y = 491,700.00; thence East 15,417.27 feet to a point on the West boundary of State Lease No. 20451 having Coordinates of X = 2,061,632.26 and Y = 491,700.00; thence South 00 degrees 56 minutes 38 seconds East 4,920.38 feet along the West boundary of said State Lease No. 20451 to its Southwest corner having Coordinates of X = 2,061,713.31 and Y = 486,780.29; thence South 10,920.29 feet to a point having Coordinates of X = 2,061,713.31 and Y = 475,860.00; thence West 15,498.32 feet to a point having Coordinates of X = 2,046,214.99 and Y = 475,860.00; thence North 15,840.00 feet to the point of beginning, (This lease includes only waterbottoms claimed and owned by the state and specifically excludes any land which the state may claim or own and to which the mineral rights are vested in the state), containing approximately **93 acres**, all as more particularly outlined on a plat on file in the Office of Mineral Resources, Department of Natural Resources. All bearings, distances and coordinates are based on Louisiana Coordinate System of 1927, (North or South Zone), where applicable.

NOTE: The above description of the Tract nominated for lease has been provided and corrected, where required, exclusively by the nomination party. Any mineral lease selected from this Tract and awarded by the Louisiana State Mineral and Energy Board shall be without warranty of any kind, either express, implied, or statutory, including, but not limited to, the implied warranties of merchantability and fitness for a particular purpose. Should the mineral lease awarded by the Louisiana State Mineral and Energy Board be subsequently modified, cancelled or abrogated due to the existence of conflicting leases, operating agreements, private claims or other future obligations or conditions which may affect all or any portion of the leased Tract, it shall not relieve the Lessee of the obligation to pay any bonus due thereon to the Louisiana State Mineral and Energy Board, nor shall the Louisiana State Mineral and Energy Board be obligated to refund any consideration paid by the Lessor prior to such modification, cancellation, or abrogation, including, but not limited to, bonuses, rentals and royalties.

NOTE: This lease shall be for a primary term of five (5) years.

Applicant: THEOPHILUS OIL, GAS & LAND SERVICES, LLC

Bidder	Cash Payment	Price/Acre	Rental	Oil	Gas	Other

**Legend**  
12050045  
Active\_Leases  
IMAGERY.DOQQ\_2008\_1M\_CIR

SL 20451

ASSUMPTION PARISH

T12S - R13E

BAYOU CORNE

P.O.B.

T13S - R13E

T13S - R12E

