

TRACT 42611 - Iberia Parish, Louisiana

All of the lands now or formerly constituting the beds and bottoms of all water bodies of every nature and description as to which title is vested in the State of Louisiana, together with all islands arising therein and other lands formed by accretion or by reliction, where allowed by law, excepting tax adjudicated lands, and not presently under mineral lease on May 9, 2012, situated in Iberia Parish, Louisiana, and more particularly described as follows: Beginning at a point having Coordinates of X = 2,013,609.66 and Y = 491,700.00; thence East approximately 10,690 feet to a point on the East boundary of the Atchafalaya Basin having a Coordinate of Y = 491,700.00; thence Southerly along the East boundary of said Atchafalaya Basin to the point of intersection with an East/West line having a Coordinate of Y = 475,860.00; thence West approximately 8,553 feet to a point having Coordinates of X = 2,013,609.66 and Y = 475,860.00; thence North 15,840.00 feet to the point of beginning, **LESS AND EXCEPT** that portion, if any, of the above described tract that may lie outside of the boundary of the Atchafalaya Basin, containing approximately **69 acres**, all as more particularly outlined on a plat on file in the Office of Mineral Resources, Department of Natural Resources. All bearings, distances and coordinates are based on Louisiana Coordinate System of 1927, (North or South Zone), where applicable.

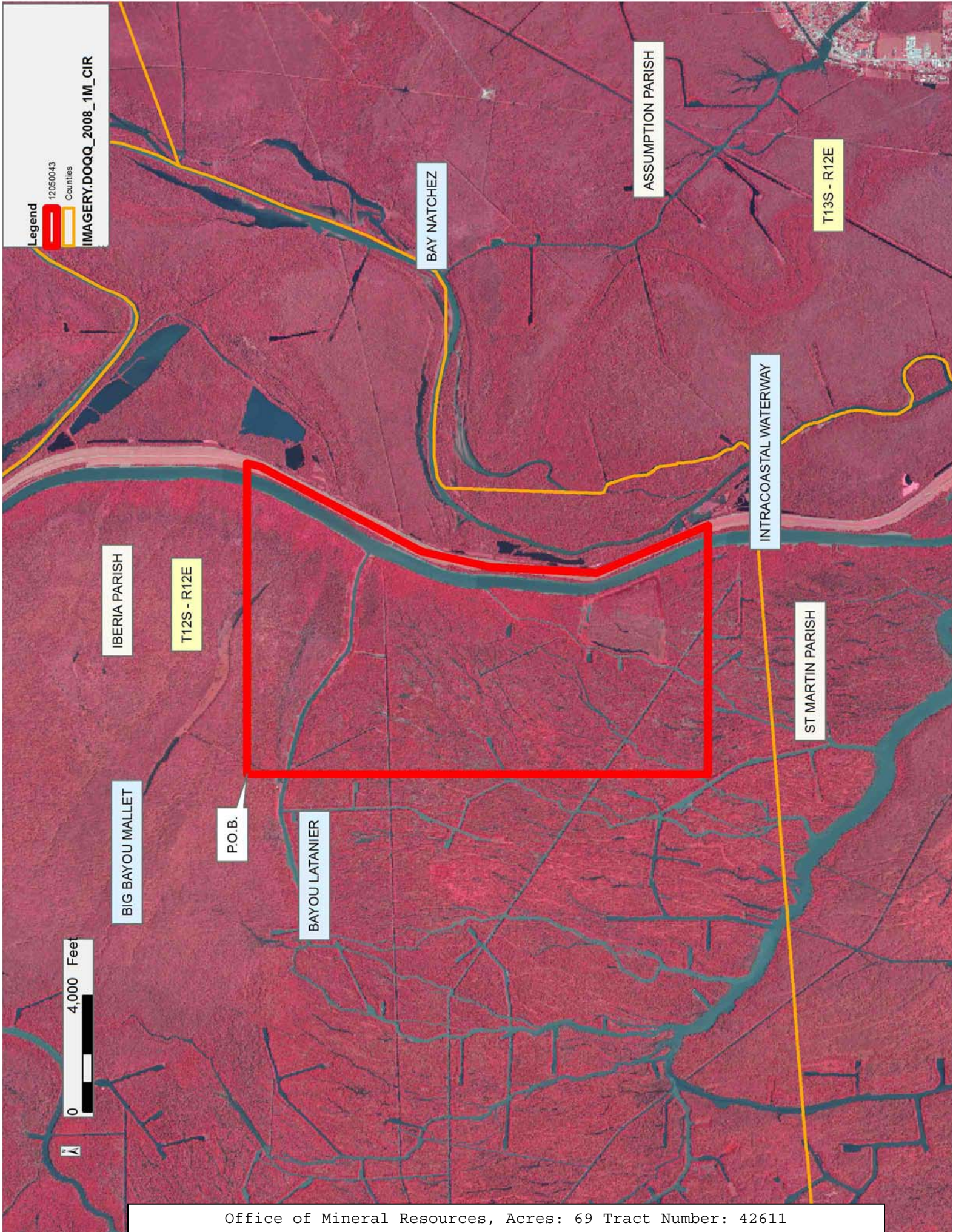
NOTE: The above description of the Tract nominated for lease has been provided and corrected, where required, exclusively by the nomination party. Any mineral lease selected from this Tract and awarded by the Louisiana State Mineral and Energy Board shall be without warranty of any kind, either express, implied, or statutory, including, but not limited to, the implied warranties of merchantability and fitness for a particular purpose. Should the mineral lease awarded by the Louisiana State Mineral and Energy Board be subsequently modified, cancelled or abrogated due to the existence of conflicting leases, operating agreements, private claims or other future obligations or conditions which may affect all or any portion of the leased Tract, it shall not relieve the Lessee of the obligation to pay any bonus due thereon to the Louisiana State Mineral and Energy Board, nor shall the Louisiana State Mineral and Energy Board be obligated to refund any consideration paid by the Lessor prior to such modification, cancellation, or abrogation, including, but not limited to, bonuses, rentals and royalties.

NOTE: This acreage is entirely within the boundary of the Atchafalaya Legal Area Basin.

NOTE: This lease shall be for a primary term of five (5) years.

Applicant: THEOPHILUS OIL, GAS & LAND SERVICES, LLC

Bidder	Cash Payment	Price/Acre	Rental	Oil	Gas	Other



Legend

12050043

Counties

IMAGERY.DOQQ_2008_1M_CIR

IBERIA PARISH

T12S - R12E

BIG BAYOU MALLET

P.O.B.

BAYOU LATANIER

BAY NATCHEZ

ASSUMPTION PARISH

T13S - R12E

INTRACOASTAL WATERWAY

ST MARTIN PARISH

TRACT 42612 - Assumption and Iberia Parishes, Louisiana

All of the lands now or formerly constituting the beds and bottoms of all water bodies of every nature and description as to which title is vested in the State of Louisiana, together with all islands arising therein and other lands formed by accretion or by reliction, where allowed by law, excepting tax adjudicated lands, and not presently under mineral lease on May 9, 2012, situated in Assumption and Iberia Parishes, Louisiana, and more particularly described as follows: Beginning at a point having Coordinates of X = 2,029,912.33 and Y = 491,700.00; thence South 15,840.00 feet to a point having Coordinates of X = 2,029,912.33 and Y = 475,860.00; thence West approximately 7,750 feet to a point on the East boundary of the Atchafalaya Basin having a Coordinate of Y = 475,860.00; thence Northerly along the East boundary of said Atchafalaya Basin to the point of intersection with an East/West line having a Coordinate of Y = 491,700.00; thence East approximately 5,612 feet to the point of beginning, **LESS AND EXCEPT** that portion, if any, of the above described tract that may lie inside of the boundary of the Atchafalaya Basin, and **LESS AND EXCEPT** any right, title, and interest in lands owned by and not under lease from the State of Louisiana, on behalf of the Iberia Parish School Board, situated in Section 16, Township 12 South, Range 12 East, Iberia Parish, Louisiana, contained within the above described tract, containing approximately **126 acres**, all as more particularly outlined on a plat on file in the Office of Mineral Resources, Department of Natural Resources. All bearings, distances and coordinates are based on Louisiana Coordinate System of 1927, (North or South Zone), where applicable.

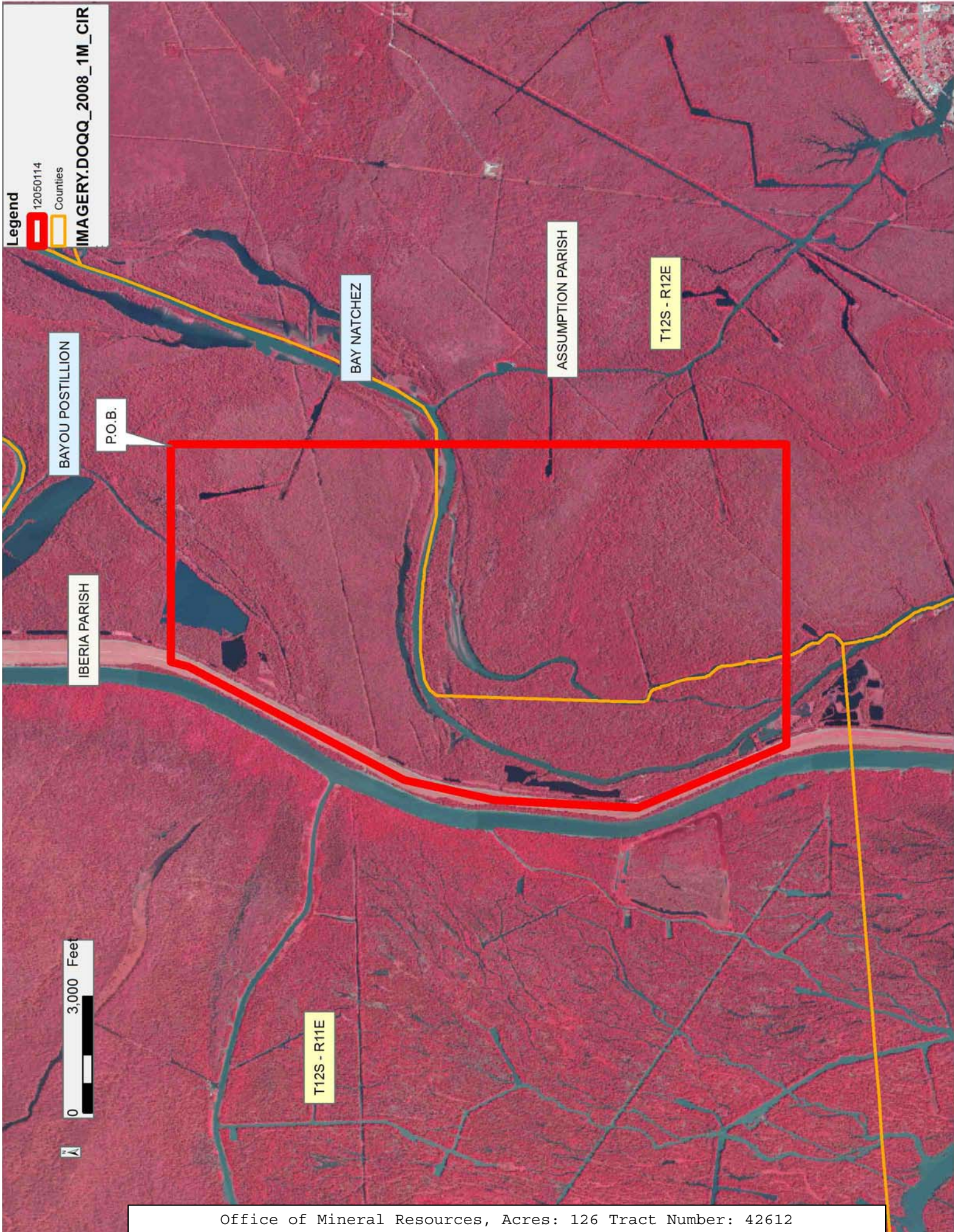
NOTE: The above description of the Tract nominated for lease has been provided and corrected, where required, exclusively by the nomination party. Any mineral lease selected from this Tract and awarded by the Louisiana State Mineral and Energy Board shall be without warranty of any kind, either express, implied, or statutory, including, but not limited to, the implied warranties of merchantability and fitness for a particular purpose. Should the mineral lease awarded by the Louisiana State Mineral and Energy Board be subsequently modified, cancelled or abrogated due to the existence of conflicting leases, operating agreements, private claims or other future obligations or conditions which may affect all or any portion of the leased Tract, it shall not relieve the Lessee of the obligation to pay any bonus due thereon to the Louisiana State Mineral and Energy Board, nor shall the Louisiana State Mineral and Energy Board be obligated to refund any consideration paid by the Lessor prior to such modification, cancellation, or abrogation, including, but not limited to, bonuses, rentals and royalties.

NOTE: This lease shall be for a primary term of five (5) years.

Applicant: THEOPHILUS OIL, GAS & LAND SERVICES, LLC

Bidder	Cash Payment	Price/Acre	Rental	Oil	Gas	Other

Legend
12050114
Counties
IMAGERY.DOQQ_2008_1M_CIR



TRACT 42613 - Assumption and Iberia Parishes, Louisiana

All of the lands now or formerly constituting the beds and bottoms of all water bodies of every nature and description as to which title is vested in the State of Louisiana, together with all islands arising therein and other lands formed by accretion or by reliction, where allowed by law, excepting tax adjudicated lands, and not presently under mineral lease on May 9, 2012, situated in Assumption and Iberia Parishes, Louisiana, and more particularly described as follows: Beginning at a point having Coordinates of X = 2,029,912.33 and Y = 491,700.00; thence East 16,302.66 feet to a point having Coordinates of X = 2,046,214.99 and Y = 491,700.00; thence South 15,840.00 feet to a point having Coordinates of X = 2,046,214.99 and Y = 475,860.00; thence West 16,302.66 feet to a point having Coordinates of X = 2,029,912.33 and Y = 475,860.00; thence North 15,840.00 feet to the point of beginning, containing approximately **140 acres**, all as more particularly outlined on a plat on file in the Office of Mineral Resources, Department of Natural Resources. All bearings, distances and coordinates are based on Louisiana Coordinate System of 1927, (North or South Zone), where applicable.

NOTE: The above description of the Tract nominated for lease has been provided and corrected, where required, exclusively by the nomination party. Any mineral lease selected from this Tract and awarded by the Louisiana State Mineral and Energy Board shall be without warranty of any kind, either express, implied, or statutory, including, but not limited to, the implied warranties of merchantability and fitness for a particular purpose. Should the mineral lease awarded by the Louisiana State Mineral and Energy Board be subsequently modified, cancelled or abrogated due to the existence of conflicting leases, operating agreements, private claims or other future obligations or conditions which may affect all or any portion of the leased Tract, it shall not relieve the Lessee of the obligation to pay any bonus due thereon to the Louisiana State Mineral and Energy Board, nor shall the Louisiana State Mineral and Energy Board be obligated to refund any consideration paid by the Lessor prior to such modification, cancellation, or abrogation, including, but not limited to, bonuses, rentals and royalties.

NOTE: This lease shall be for a primary term of five (5) years.

Bidder	Cash Payment	Price/Acre	Rental	Oil	Gas	Other

Applicant: THEOPHILUS OIL, GAS & LAND SERVICES, LLC

Legend

12050044

Counties

IMAGERY.DOQQ_2008_1M_CIR

ASSUMPTION PARISH

T12S - R12E

BAY NATCHEZ

P.O.B.

IBERIA PARISH

BAYOU PIERRE PART

T13S - R12E

0 4,000 Feet



TRACT 42614 - Iberia Parish, Louisiana

All of the lands now or formerly constituting the beds and bottoms of all water bodies of every nature and description as to which title is vested in the State of Louisiana, together with all islands arising therein and other lands formed by accretion or by reliction, where allowed by law, excepting tax adjudicated lands, and not presently under mineral lease on May 9, 2012, situated in Iberia Parish, Louisiana, and more particularly described as follows: Beginning at a point having Coordinates of X = 1,981,300.00 and Y = 491,700.00; thence East 16,007.00 feet to a point having Coordinates of X = 1,997,307.00 and Y = 491,700.00; thence South 6,712.90 feet to the Northwest corner of State Lease No. 18859 having Coordinates of X = 1,997,307.00 and Y = 484,987.10; thence South 00 degrees 30 minutes 01 seconds East 5,336.20 feet along the West boundary of said State Lease No. 18859 to its Southwest corner having Coordinates of X = 1,997,353.60 and Y = 479,651.10; thence South 3,791.10 feet to a point having Coordinates of X = 1,997,353.60 and Y = 475,860.00; thence West 16,053.60 feet to a point having Coordinates of X = 1,981,300.00 and Y = 475,860.00; thence North 15,840.00 feet to the point of beginning, **LESS AND EXCEPT** all of Operating Agreement AO 0003 that lies entirely within the above described tract, and **LESS AND EXCEPT** any right, title, and interest in lands owned by and not under lease from the State of Louisiana, on behalf of the Iberia Parish School Board, situated in Section 16, Township 12 South, Range 11 East, Iberia Parish, Louisiana, contained within the above described tract, (This lease includes only waterbottoms claimed and owned by the state and specifically excludes any land which the state may claim or own and to which the mineral rights are vested in the state). Nomination contains approximately **110 acres**, all as more particularly outlined on a plat on file in the Office of Mineral Resources, Department of Natural Resources. All bearings, distances and coordinates are based on Louisiana Coordinate System of 1927, (North or South Zone), where applicable.

NOTE: The above description of the Tract nominated for lease has been provided and corrected, where required, exclusively by the nomination party. Any mineral lease selected from this Tract and awarded by the Louisiana State Mineral and Energy Board shall be without warranty of any kind, either express, implied, or statutory, including, but not limited to, the implied warranties of merchantability and fitness for a particular purpose. Should the mineral lease awarded by the Louisiana State Mineral and Energy Board be subsequently modified, cancelled or abrogated due to the existence of conflicting leases, operating agreements, private claims or other future obligations or conditions which may affect all or any portion of the leased Tract, it shall not relieve the Lessee of the obligation to pay any bonus due thereon to the Louisiana State Mineral and Energy Board, nor shall the Louisiana State Mineral and Energy Board be obligated to refund any consideration paid by the Lessor prior to such modification, cancellation, or abrogation, including, but not limited to, bonuses, rentals and royalties.

NOTE: This acreage is entirely within the boundary of the Atchafalaya Basin Legal Area.

NOTE: This lease shall be for a primary term of five (5) years.

Applicant: THEOPHILUS OIL, GAS & LAND SERVICES, LLC

Bidder	Cash Payment	Price/Acre	Rental	Oil	Gas	Other

Legend

12050041

Active Leases

IMAGERY.DOQQ_2008_1M_CIR

BIG BAYOU PIGEON

T12S - R11E

SL 18859

IBERIA PARISH

AO 0003

P.O.B.

0 3,000 Feet

TRACT 42615 - Iberia Parish, Louisiana

All of the lands now or formerly constituting the beds and bottoms of all water bodies of every nature and description as to which title is vested in the State of Louisiana, together with all islands arising therein and other lands formed by accretion or by reliction, where allowed by law, excepting tax adjudicated lands, and not presently under mineral lease on May 9, 2012, situated in Iberia Parish, Louisiana, and more particularly described as follows: Beginning at a point having Coordinates of X = 1,997,307.00 and Y = 491,700.00; thence East 16,302.66 feet to a point having Coordinates of X = 2,013,609.66 and Y = 491,700.00; thence South 15,840.00 feet to a point having Coordinates of X = 2,013,609.66 and Y = 475,860.00; thence West approximately 3,810 feet to a point located on the East boundary of State Lease No. 2655 having a Coordinate of Y = 475,860.00; thence along the East and North boundary of said State Lease No. 2655 the following courses and distances: Northerly approximately 3,813 feet to a corner, Westerly approximately 1,466 feet to a corner, Northerly approximately 1,439 feet to a corner and Westerly approximately 4,646 feet to the most East Southeast corner of State Lease No. 18859 having a Coordinate of X = 2,003,560.74; thence North approximately 1,303 feet along the East boundary of said State Lease No. 18859 to its most East Northeast corner, also being a corner located on the West boundary of State Lease No. 18258, as amended having Coordinates of X = 2,003,560.74 and Y = 482,333.27; thence along the West, South, East, North and West boundary of said State Lease No. 18258 the following courses and distances: South 00 degrees 04 minutes 06 seconds East 1,297.36 feet to a corner having Coordinates of X = 2,003,562.29 and Y = 481,035.91, North 89 degrees 10 minutes 14 seconds East 1,783.22 feet to a corner having Coordinates of X = 2,005,345.32 and Y = 481,061.72, North 00 degrees 43 minutes 28 seconds West 377.85 to a corner having Coordinates of X = 2,005,340.54 and Y = 481,439.54, South 85 degrees 07 minutes 06 seconds East 387.45 feet to a corner having Coordinates of X = 2,005,726.59 and Y = 481,406.57, Easterly along an arc having a radius of 3,000.00 feet and a center having Coordinates of X = 2,006,035.74 and Y = 484,390.60 to a corner having Coordinates of X = 2,006,713.67 and Y = 481,468.20, North 74 degrees 18 minutes 59 seconds East 1,166.15 feet to a corner having Coordinates of X = 2,007,836.41 and Y = 481,783.44, Easterly along an arc having a radius of 1,525.00 feet and a center having Coordinates of X = 2,007,921.13 and Y = 483,306.09 to a corner having Coordinates of X = 2,008,329.79 and Y = 481,836.86, South 89 degrees 15 minutes 00 seconds East 507.30 feet to a corner, North 00 degrees 22 minutes 15 seconds West 2,789.04 feet to a corner having Coordinates of X = 2,008,819.00 and Y = 484,619.20, North 88 degrees 50 minutes 53 seconds East 107.34 feet to a corner, North 2,773.71 feet to a corner, South 83 degrees 36 minutes 34 seconds West 3,241.30 feet to a corner, North 77 degrees 28 minutes 08 seconds West 2,091.13 feet to a corner, South 26 degrees 26 minutes 54 seconds East 267.36 feet to a corner, South 15 degrees 26 minutes 41 seconds East 229.94 feet to a corner, South 09 degrees 44 minutes 42 seconds East 459.41 feet to a corner, South 14 degrees 43 minutes 35 seconds East 132.31 feet to a corner, South 10 degrees 28 minutes 00

seconds East 312.58 feet to a corner, South 06 degrees 42 minutes 30 seconds East 490.55 feet to a corner, South 01 degrees 34 minutes 11 seconds West 395.48 feet, South 22 degrees 39 minutes 14 seconds West 261.76 feet to a corner, South 43 degrees 58 minutes 37 seconds West 269.29 feet to a corner having Coordinates of X = 2,003,771.00 and Y = 484,821.00 and West 210.26 to its Northwest corner, also being the Northeast corner of the Southern portion of State Lease No. 18070, as amended having Coordinates of X = 2,003,560.74 and Y = 484,821.00; thence Westerly approximately 396 feet along the North boundary of the Southern portion of said State Lease No. 18070 to its Northwest corner; thence Southwesterly approximately 2,887 feet along the Northwestern boundary of the Southern portion of said State Lease No. 18070 to its most West corner; thence Northwesterly approximately 261 feet to the most Southern corner of the Northern portion of said State Lease No. 18070; thence along the Southwestern, East, North, Northwestern and West boundary of the Northern portion of said State Lease No. 18070 the following courses and distances: Northeasterly approximately 2,863 feet to a corner, Northeasterly approximately 832 feet to a corner having a Coordinate of X = 2,003,560.74, North approximately 728 feet to a corner having a Coordinate of X = 2,003,560.74, Westerly approximately 543 feet to a corner, Northerly approximately 1,487 feet to a corner having a Coordinate of Y = 487,833.27, West approximately 1,211 feet to a corner having a Coordinate of Y = 487,833.27, Southwesterly approximately 3,300 feet to a corner having a Coordinate of X = 1,998,660.74 and South approximately 1,257 feet to its most North Southwest corner having a Coordinate of X = 1,998,660.74; thence South approximately 557 feet to the most Northeast corner of said State Lease No. 18859 having Coordinates of X = 1,998,660.74 and Y = 484,996.54; thence South 89 degrees 36 minutes 02 seconds West 1,353.77 feet along the North boundary of said State Lease No. 18859 to its Northwest corner having Coordinates of X = 1,997,307.00 and Y = 484,987.10; thence North 6,712.90 feet to the point of beginning, **LESS AND EXCEPT** any portions of State Lease No. 18070, as amended and State Lease No. 2655 that may lie within the above described tract, containing approximately **66 acres**, all as more particularly outlined on a plat on file in the Office of Mineral Resources, Department of Natural Resources. All bearings, distances and coordinates are based on Louisiana Coordinate System of 1927, (North or South Zone), where applicable.

NOTE: The above description of the Tract nominated for lease has been provided and corrected, where required, exclusively by the nomination party. Any mineral lease selected from this Tract and awarded by the Louisiana State Mineral and Energy Board shall be without warranty of any kind, either express, implied, or statutory, including, but not limited to, the implied warranties of merchantability and fitness for a particular purpose. Should the mineral lease awarded by the Louisiana State Mineral and Energy Board be subsequently modified, cancelled or abrogated due to the existence of conflicting leases, operating agreements, private claims or other future obligations or conditions which may affect all or any portion of the leased Tract, it shall not relieve the Lessee of the

obligation to pay any bonus due thereon to the Louisiana State Mineral and Energy Board, nor shall the Louisiana State Mineral and Energy Board be obligated to refund any consideration paid by the Lessor prior to such modification, cancellation, or abrogation, including, but not limited to, bonuses, rentals and royalties.

NOTE: This lease is for a primary term of five (5) years.

NOTE: This acreage is entirely within the boundary of the Atchafalaya Basin Legal Area.

Applicant: THEOPHILUS OIL, GAS & LAND SERVICES, LLC

Bidder	Cash Payment	Price/Acre	Rental	Oil	Gas	Other

Legend

12050042

Active_Leases

Counties

IMAGERY.DOQQ_2008_1M_CIR

IBERIA PARISH

LITTLE BAYOU MALLET

BAYOU POSTILLION

OLD RIVER

SL 18070

SL 18258

SL 2655

SL 18859

0 3,200 Feet

P.O.B.

Legend

12050042

Active_Leases

Counties

IMAGERY.DOQQ_2008_1M_CIR

IBERIA PARISH

LITTLE BAYOU MALLET

BAYOU POSTILLION

OLD RIVER

SL 18070

SL 18258

SL 2655

SL 18859

0 3,200 Feet

P.O.B.

TRACT 42616 - Cameron Parish, Louisiana

All of the lands now or formerly constituting the beds and bottoms of all water bodies of every nature and description as to which title is vested in the State of Louisiana, together with all islands arising therein and other lands formed by accretion or by reliction, where allowed by law, excepting tax adjudicated lands, and not presently under mineral lease on May 9, 2012, situated in Cameron Parish, Louisiana, and more particularly described as follows: Beginning at a point having Coordinates of X = 1,380,386.43 and Y = 496,108.72; thence South 66 degrees 39 minutes 35 seconds West 6,618.79 feet to a point on the Southern boundary of State Lease No. 50, amended, having Coordinates of X = 1,374,309.26 and Y = 493,486.43; thence along the boundary of said State Lease No. 50, as amended, the following courses: North 54 degrees 30 minutes 00 seconds East 337.50 feet to a point having Coordinates of X = 1,374,584.02 and Y = 493,682.42; North 19 degrees 56 minutes 36 seconds West 4,735.06 feet to a point having Coordinates of X = 1,372,968.94 and Y = 498,133.52; South 89 degrees 42 minutes 51 seconds East 6,977.39 feet to a point having Coordinates of X = 1,379,946.24 and Y = 498,098.71; and North 44 degrees 56 minutes 04 seconds East 641.80 feet to a point having Coordinates of X = 1,380,399.54 and Y = 498,553.05; thence South 00 degrees 18 minutes 27 seconds West 2,444.36 feet to the point of beginning, containing **518.68 acres**, all as more particularly outlined on a plat on file in the Office of Mineral Resources, Department of Natural Resources. All bearings, distances and coordinates are based on Louisiana Coordinate System of 1927, (North or South Zone), where applicable.

NOTE: The above description of the Tract nominated for lease has been provided and corrected, where required, exclusively by the nomination party. Any mineral lease selected from this Tract and awarded by the Louisiana State Mineral and Energy Board shall be without warranty of any kind, either express, implied, or statutory, including, but not limited to, the implied warranties of merchantability and fitness for a particular purpose. Should the mineral lease awarded by the Louisiana State Mineral and Energy Board be subsequently modified, cancelled or abrogated due to the existence of conflicting leases, operating agreements, private claims or other future obligations or conditions which may affect all or any portion of the leased Tract, it shall not relieve the Lessee of the obligation to pay any bonus due thereon to the Louisiana State Mineral and Energy Board, nor shall the Louisiana State Mineral and Energy Board be obligated to refund any consideration paid by the Lessor prior to such modification, cancellation, or abrogation, including, but not limited to, bonuses, rentals and royalties.

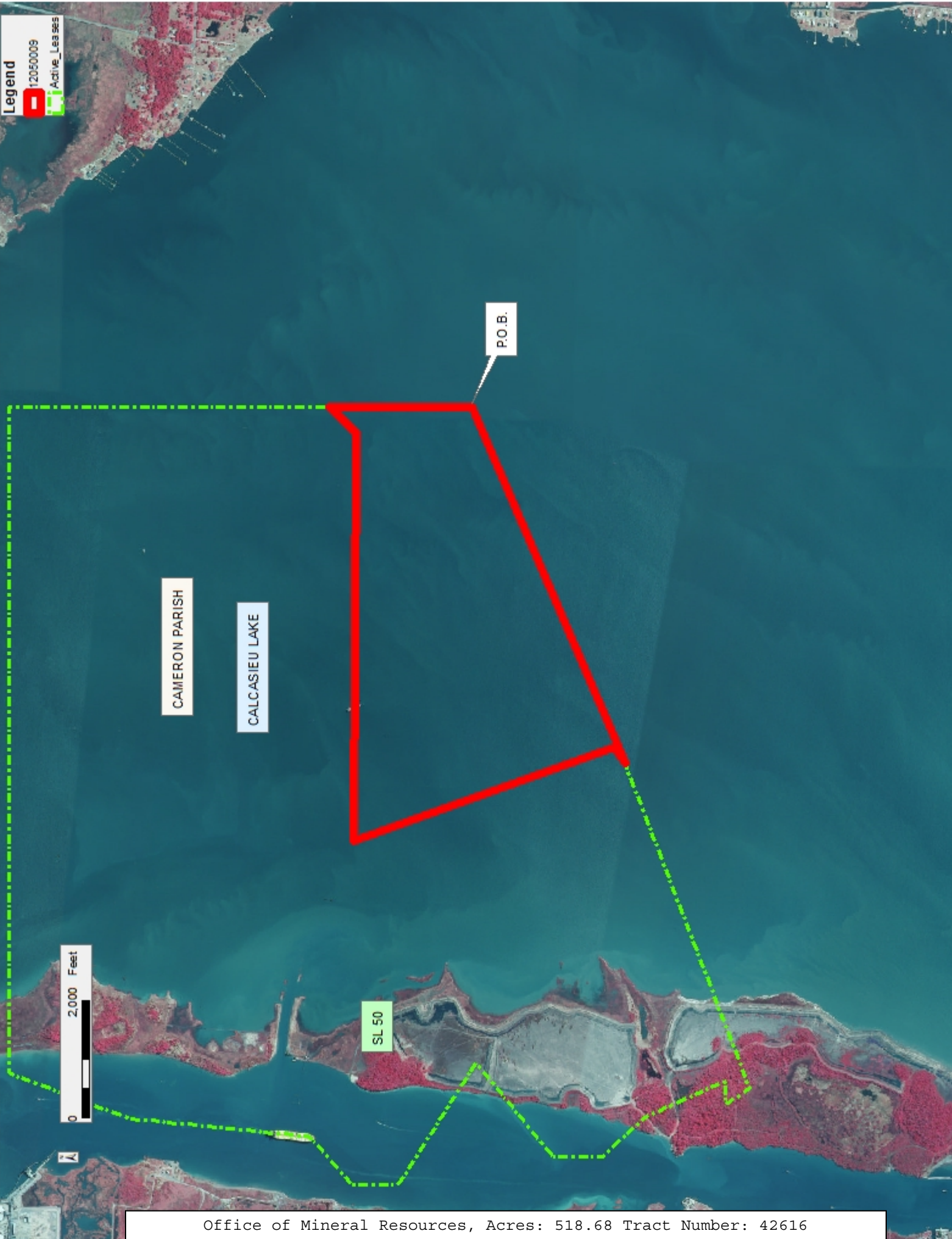
NOTE: The State of Louisiana does hereby reserve, and this lease shall be subject to, the imprescriptible right of surface use in the nature of a servitude in favor of the Department of Natural Resources, including its Offices and Commissions, for the sole purpose of implementing, constructing, servicing and maintaining approved coastal zone management and/or restoration projects. Utilization of any and all rights derived

under this lease by the mineral lessee, its agents, successors or assigns, shall not interfere with nor hinder the reasonable surface use by the Department of Natural Resources, its Offices or Commissions, as herein above reserved.

NOTE: This tract is located in an area designated by the Louisiana Legislature or the Wildlife and Fisheries Commission as a Public Oyster Seed Ground, Reservation, or area of Calcasieu or Sabine Lake. Proposed projects occurring in these areas will be evaluated on a case by case basis by Louisiana Department of Wildlife & Fisheries. Modifications to proposed project features including, but not limited to, access routes, well sites, flowlines, and appurtenant structures maybe required by the Louisiana Department of Wildlife and Fisheries. In addition, compensatory mitigation will be required to offset unavoidable habitat impacts.

Applicant: PETRO-LANDS RESOURCES, INC.

Bidder	Cash Payment	Price/Acre	Rental	Oil	Gas	Other



Legend
12050009
Active_Leases

CAMERON PARISH

CALCASIEU LAKE

P.O.B.

2,000 Feet
0

SL 50

Office of Mineral Resources, Acres: 518.68 Tract Number: 42616

TRACT 42617 - Cameron Parish, Louisiana

All of the lands now or formerly constituting the beds and bottoms of all water bodies of every nature and description as to which title is vested in the State of Louisiana, together with all islands arising therein and other lands formed by accretion or by reliction, where allowed by law, excepting tax adjudicated lands, and not presently under mineral lease on May 9, 2012, situated in Cameron Parish, Louisiana, and more particularly described as follows: Beginning at a point on the Western boundary of State Lease No. 50, as amended, having Coordinates of X = 1,369,190.00 and Y = 496,055.00; thence North 57 degrees 28 minutes 44 seconds West approximately 2,485 feet along the boundary of said State Lease No. 50 to a point of intersection with the Erwin Case boundary; thence Southerly along the meanders of said Erwin Case boundary to a point of intersection with a line bearing South 50 degrees 35 minutes 24 seconds West and commencing at a point having Coordinates of X = 1,369,190.00 and Y = 496,055.00; thence North 50 degrees 35 minutes 24 seconds East approximately 2,080 feet along said line being the boundary of said State Lease No. 50 to the Point of Beginning, **LESS AND EXCEPT** that portion, if any, of State Lease No. 42, as amended, and State Lease No. 50, as amended, that may lie within the above described tract, containing approximately **62 acres**, all as more particularly outlined on a plat on file in the Office of Mineral Resources, Department of Natural Resources. All bearings, distances and coordinates are based on Louisiana Coordinate System of 1927, (North or South Zone), where applicable.

NOTE: The above description of the Tract nominated for lease has been provided and corrected, where required, exclusively by the nomination party. Any mineral lease selected from this Tract and awarded by the Louisiana State Mineral and Energy Board shall be without warranty of any kind, either express, implied, or statutory, including, but not limited to, the implied warranties of merchantability and fitness for a particular purpose. Should the mineral lease awarded by the Louisiana State Mineral and Energy Board be subsequently modified, cancelled or abrogated due to the existence of conflicting leases, operating agreements, private claims or other future obligations or conditions which may affect all or any portion of the leased Tract, it shall not relieve the Lessee of the obligation to pay any bonus due thereon to the Louisiana State Mineral and Energy Board, nor shall the Louisiana State Mineral and Energy Board be obligated to refund any consideration paid by the Lessor prior to such modification, cancellation, or abrogation, including, but not limited to, bonuses, rentals and royalties.

NOTE: The State of Louisiana does hereby reserve, and this lease shall be subject to, the imprescriptible right of surface use in the nature of a servitude in favor of the Department of Natural Resources, including its Offices and Commissions, for the sole purpose of implementing, constructing, servicing and maintaining approved coastal zone management and/or restoration projects. Utilization of any and all rights derived under this lease by the mineral lessee, its agents, successors or assigns,

shall not interfere with nor hinder the reasonable surface use by the Department of Natural Resources, its Offices or Commissions, as herein above reserved.

NOTE: This tract is located in an area designated by the Louisiana Legislature or the Wildlife and Fisheries Commission as a Public Oyster Seed Ground, Reservation, or area of Calcasieu or Sabine Lake. Proposed projects occurring in these areas will be evaluated on a case by case basis by Louisiana Department of Wildlife & Fisheries. Modifications to proposed project features including, but not limited to, access routes, well sites, flowlines, and appurtenant structures maybe required by the Louisiana Department of Wildlife and Fisheries. In addition, compensatory mitigation will be required to offset unavoidable habitat impacts.

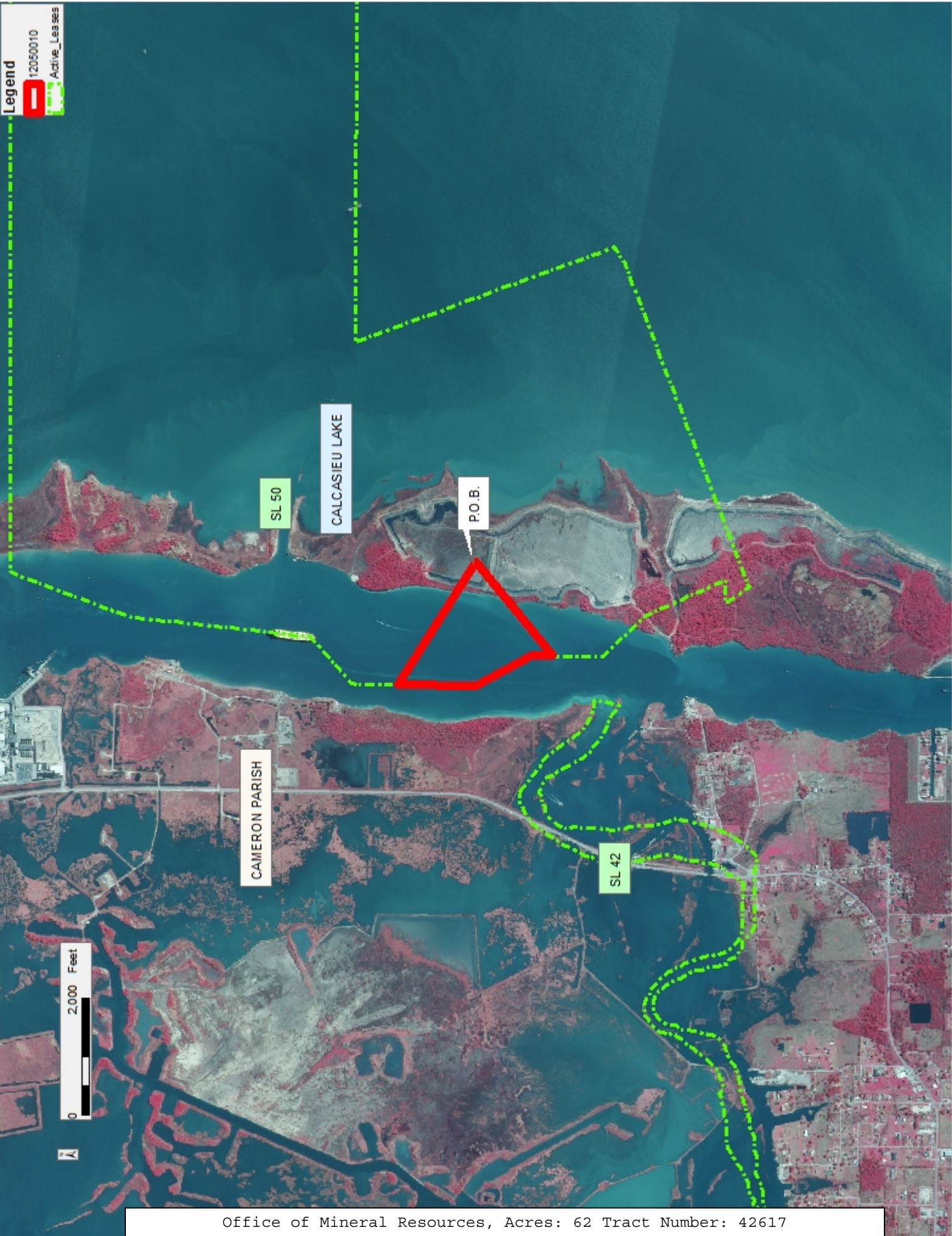
Applicant: PETRO-LANDS RESOURCES, INC.

Bidder	Cash Payment	Price/Acre	Rental	Oil	Gas	Other

Legend

12050010

Active Leases



TRACT 42618 - Iberia and St. Martin Parishes, Louisiana

All of the lands now or formerly constituting the beds and bottoms of all water bodies of every nature and description as to which title is vested in the State of Louisiana, together with all islands arising therein and other lands formed by accretion or by reliction, where allowed by law, excepting tax adjudicated lands, and not presently under mineral lease on May 9, 2012, situated in Iberia and St. Martin Parishes, Louisiana, and more particularly described as follows: Beginning at a point having Coordinates of X = 1,997,353.60 and Y = 475,860.00; thence East approximately 2,612 feet to a point on the West boundary of State Lease No. 2655 having a Coordinate of Y = 475,860.00; thence along the boundary of said State Lease No. 2655 the following courses and distances: Southerly approximately 1,577 feet to a Southwest corner, Easterly approximately 2,961 feet to a Southeast corner and Northerly approximately 2,699 feet to a point of intersection with the Southern boundary or a projection thereof of Operating Agreement AO 0310; thence along the Southern boundary of said Operating Agreement the following courses and distances; South 67 degrees 01 minutes 38 seconds East approximately 105 feet to a corner having Coordinates of X = 2,003,050.00 and Y = 476,945.00, South 60 degrees 28 minutes 17 seconds East 164.35 feet to a corner, South 70 degrees 20 minutes 46 seconds East 163.53 feet to a corner, South 70 degrees 53 minutes 03 seconds East 186.27 feet to a corner, South 77 degrees 57 minutes 27 seconds East 230.06 feet to a corner, South 79 degrees 56 minutes 08 seconds East 234.61 feet to a corner, South 84 degrees 30 minutes 42 seconds East 282.29 feet to a corner, South 78 degrees 59 minutes 47 seconds East 148.12 feet to a corner, South 37 degrees 28 minutes 03 seconds West 142.03 feet to a corner, South 30 degrees 26 minutes 03 seconds West 66.88 feet to a corner, North 84 degrees 15 minutes 31 seconds West 96.61 feet, North 84 degrees 02 minutes 34 seconds 346.87 feet to a corner, North 82 degrees 56 minutes 52 seconds West 293.22 feet to a corner, South 07 degrees 18 minutes 59 seconds East 408.32 feet to a corner, South 15 degrees 21 minutes 51 seconds East 230.23 feet to a corner, South 30 degrees 27 minutes 56 seconds East 197.23 feet to a corner, South 44 degrees 04 minutes 33 seconds East 175.39 feet to a corner, South 45 degrees 48 minutes 25 seconds East 200.84 feet to a corner, South 55 degrees 27 minutes 46 seconds East 206.37 feet to a corner, South 65 degrees 29 minutes 06 seconds East 200.03 feet to a corner, South 71 degrees 13 minutes 43 seconds East 161.60 feet to a corner, South 83 degrees 10 minutes 03 seconds East 218.55 feet to a corner, North 88 degrees 49 minutes 51 seconds East 196.04 feet to a corner, North 77 degrees 25 minutes 57 seconds East 160.85 feet to a corner, North 73 degrees 44 minutes 23 seconds East 200.00 feet to a corner having Coordinates of X = 2,005,299.00 and Y = 475,269.00 and North 63 degrees 55 minutes 04 seconds East approximately 34 feet to a point on the boundary of said State Lease No. 2655; thence along the West, South and East boundary of said State Lease No. 2655 the following courses and distances: Southerly approximately 1,023 feet to a corner, Easterly approximately 4,502 feet to a corner and Northerly approximately 1,574 feet to a point on its East

boundary having a Coordinate of Y = 475,860.00; thence East approximately 3,809 feet to a point having Coordinates of X = 2,013,609.66 and Y = 475,860.00; thence South 15,840.00 feet to a point having Coordinates of X = 2,013,609.66 and Y = 460,020.00; thence West 16,256.06 feet to a point having Coordinates of X = 1,997,353.60 and Y = 460,020.00; thence North 15,840.00 to the point of beginning, **LESS AND EXCEPT** any portions of State Lease No. 2655 and Operating Agreement No. AO 0310 that may lie within the above described tract, (This lease includes only waterbottoms claimed and owned by the state and specifically excludes any land which the state may claim or own and to which the mineral rights are vested in the state), containing approximately **164 acres**, all as more particularly outlined on a plat on file in the Office of Mineral Resources, Department of Natural Resources. All bearings, distances and coordinates are based on Louisiana Coordinate System of 1927, (North or South Zone), where applicable.

NOTE: The above description of the Tract nominated for lease has been provided and corrected, where required, exclusively by the nomination party. Any mineral lease selected from this Tract and awarded by the Louisiana State Mineral and Energy Board shall be without warranty of any kind, either express, implied, or statutory, including, but not limited to, the implied warranties of merchantability and fitness for a particular purpose. Should the mineral lease awarded by the Louisiana State Mineral and Energy Board be subsequently modified, cancelled or abrogated due to the existence of conflicting leases, operating agreements, private claims or other future obligations or conditions which may affect all or any portion of the leased Tract, it shall not relieve the Lessee of the obligation to pay any bonus due thereon to the Louisiana State Mineral and Energy Board, nor shall the Louisiana State Mineral and Energy Board be obligated to refund any consideration paid by the Lessor prior to such modification, cancellation, or abrogation, including, but not limited to, bonuses, rentals and royalties.

NOTE: This acreage is entirely within the boundary of the Atchafalaya Basin Legal Area.

NOTE: This lease shall be for a primary term of five (5) years.

Bidder	Cash Payment	Price/Acre	Rental	Oil	Gas	Other

Applicant: THEOPHILUS OIL, GAS & LAND SERVICES, LLC

Legend

12050047

Active_Leases

Counties

IMAGERY.DOQQ_2008_1M_CIR

T12S - R12E

T13S - R12E

OLD RIVER

SL 2655

AO 0310

IBERIA PARISH

BAYOU LATANIER

MIDDLE FORK BAYOU LONG

ST MARTIN PARISH

P.O.B.



TRACT 42619 - Assumption Parish, Louisiana

All of the lands now or formerly constituting the beds and bottoms of all water bodies of every nature and description as to which title is vested in the State of Louisiana, together with all islands arising therein and other lands formed by accretion or by reliction, where allowed by law, excepting tax adjudicated lands, and not presently under mineral lease on May 9, 2012, situated in Assumption Parish, Louisiana, and more particularly described as follows: Beginning at a point having Coordinates of X = 2,046,214.99 and Y = 475,860.00; thence East 15,498.32 feet to a point having Coordinates of X = 2,061,713.31 and Y = 475,860.00; thence South 15,840.00 feet to a point having Coordinates of X = 2,061,713.31 and Y = 460,020.00; thence West 3,173.31 feet to a point on the East boundary of State Lease No. 20340 having Coordinates of X = 2,058,540.00 and Y = 460,020.00; thence along the East, North and West boundary of said State Lease No. 20340 the following courses and distances: North 980.00 feet to a corner having Coordinates of X = 2,058,540.00 and Y = 461,000.00, North 38 degrees 30 minutes 25 seconds West 5,846.38 feet to a corner having Coordinates of X = 2,054,900.00 and Y = 465,574.99, West 3,864.56 feet to a corner having Coordinates of X = 2,051,035.44 and Y = 465,574.99, South 3,699.99 feet to a corner having Coordinates of X = 2,051,035.44 and Y = 461,875.00 and South 51 degrees 21 minutes 37 seconds East 2,970.75 feet to a point having Coordinates of X = 2,053,355.86 and Y = 460,020.00; thence West 7,140.87 feet to a point having Coordinates of X = 2,046,214.99 and Y = 460,020.00; thence North 5,554.99 feet to the Southeast corner of State Lease No. 20142 having Coordinates of X = 2,046,214.99 and Y = 465,574.99; thence North 3,364.99 feet along the East boundary of said State Lease No. 20142 to its Northeast corner having Coordinates of X = 2,046,214.99 and Y = 468,939.98; thence North 6,920.02 feet to the point of beginning, **LESS AND EXCEPT** any right, title, and interest in lands owned by and not under lease from the State of Louisiana, on behalf of the Assumption Parish School Board, situated in Section 16, Township 13 South, Range 13 East, Assumption Parish, Louisiana, contained within the above described tract, (This tract includes only waterbottoms claimed and owned by the state and specifically excludes any land which the state or Wildlife and Fisheries may claim or own and to which the mineral rights are vested in them), containing approximately **669 acres**, all as more particularly outlined on a plat on file in the Office of Mineral Resources, Department of Natural Resources. All bearings, distances and coordinates are based on Louisiana Coordinate System of 1927, (North or South Zone), where applicable.

NOTE: The above description of the Tract nominated for lease has been provided and corrected, where required, exclusively by the nomination party. Any mineral lease selected from this Tract and awarded by the Louisiana State Mineral and Energy Board shall be without warranty of any kind, either express, implied, or statutory, including, but not limited to, the implied warranties of merchantability and fitness for a particular purpose. Should the mineral lease awarded by the Louisiana State Mineral and Energy Board be subsequently modified, cancelled or abrogated due to

the existence of conflicting leases, operating agreements, private claims or other future obligations or conditions which may affect all or any portion of the leased Tract, it shall not relieve the Lessee of the obligation to pay any bonus due thereon to the Louisiana State Mineral and Energy Board, nor shall the Louisiana State Mineral and Energy Board be obligated to refund any consideration paid by the Lessor prior to such modification, cancellation, or abrogation, including, but not limited to, bonuses, rentals and royalties.

NOTE: This lease shall be for a primary term of five (5) years.

Applicant: THEOPHILUS OIL, GAS & LAND SERVICES, LLC

Bidder	Cash Payment	Price/Acre	Rental	Oil	Gas	Other

Legend

120500050

Active_Leases

IMAGERY.DOQQ_2008_1M_CIR

ASSUMPTION PARISH

T12S - R13E

LITTLE GRAND BAYOU

SL 20340

LAKE VERRET

0 3,000 Feet

P.O.B.

BAYOU PIERRE PART

SL 20142

R12E

TRACT 42620 - Iberia and St. Martin Parishes, Louisiana

All of the lands now or formerly constituting the beds and bottoms of all water bodies of every nature and description as to which title is vested in the State of Louisiana, together with all islands arising therein and other lands formed by accretion or by reliction, where allowed by law, excepting tax adjudicated lands, and not presently under mineral lease on May 9, 2012, situated in Iberia and St. Martin Parishes, Louisiana, and more particularly described as follows: Beginning at a point having Coordinates of X = 2,013,609.66 and Y = 475,860.00; thence East approximately 8,553 feet to a point on the East boundary of the Atchafalaya Basin having Coordinate of Y = 475,860.00; thence Southerly along the East boundary of said Atchafalaya Basin to the point of intersection with a East/West line having a Coordinate of Y = 460,020.00; thence West approximately 12,908 feet to a point having Coordinates of X = 2,013,609.66 and Y = 460,020.00; thence North 15,840.00 feet to the point of beginning, **LESS AND EXCEPT** that portion, if any, of the above described tract that may lie outside of the boundary of the Atchafalaya Basin, and **LESS AND EXCEPT** any right, title, and interest in lands owned by and not under lease from the State of Louisiana, on behalf of the St. Martin Parish School Board, situated in Section 16, Township 13 South, Range 12 East, St. Martin Parish, Louisiana, contained within the above described tract, (This tract includes only waterbottoms claimed and owned by the state and specifically excludes any land which the state may claim or own and to which the mineral rights are vested in the state), containing approximately **261 acres**, all as more particularly outlined on a plat on file in the Office of Mineral Resources, Department of Natural Resources. All bearings, distances and coordinates are based on Louisiana Coordinate System of 1927, (North or South Zone), where applicable.

NOTE: The above description of the Tract nominated for lease has been provided and corrected, where required, exclusively by the nomination party. Any mineral lease selected from this Tract and awarded by the Louisiana State Mineral and Energy Board shall be without warranty of any kind, either express, implied, or statutory, including, but not limited to, the implied warranties of merchantability and fitness for a particular purpose. Should the mineral lease awarded by the Louisiana State Mineral and Energy Board be subsequently modified, cancelled or abrogated due to the existence of conflicting leases, operating agreements, private claims or other future obligations or conditions which may affect all or any portion of the leased Tract, it shall not relieve the Lessee of the obligation to pay any bonus due thereon to the Louisiana State Mineral and Energy Board, nor shall the Louisiana State Mineral and Energy Board be obligated to refund any consideration paid by the Lessor prior to such modification, cancellation, or abrogation, including, but not limited to, bonuses, rentals and royalties.

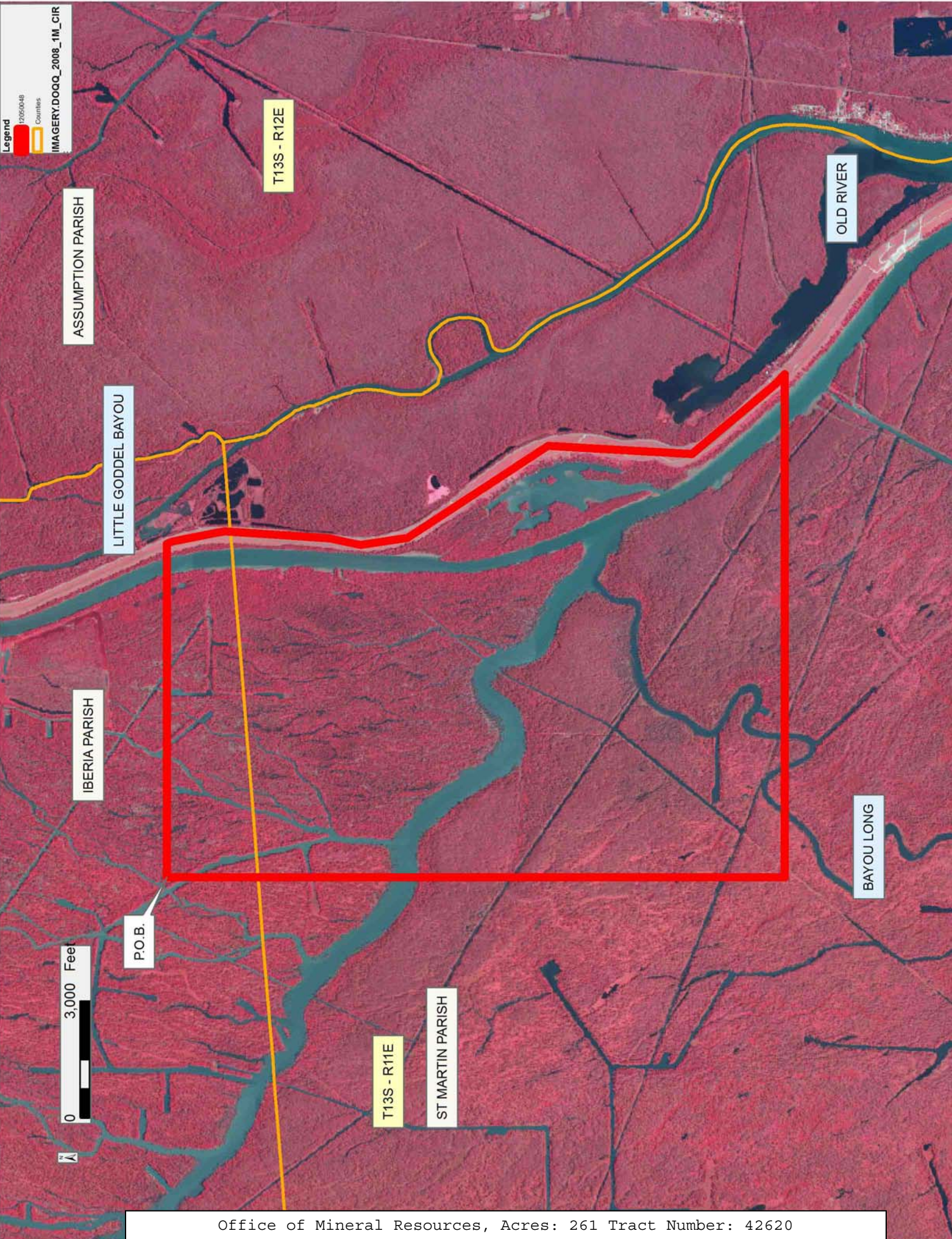
NOTE: This acreage is entirely within the boundary of the Atchafalaya Basin Legal area.

NOTE: This lease shall be for a primary term of five (5) years.

NOTE: The State of Louisiana does hereby reserve, and this lease shall be subject to, the imprescriptible right of surface use in the nature of a servitude in favor of the Department of Natural Resources, including its Offices and Commissions, for the sole purpose of implementing, constructing, servicing and maintaining approved coastal zone management and/or restoration projects. Utilization of any and all rights derived under this lease by the mineral lessee, its agents, successors or assigns, shall not interfere with nor hinder the reasonable surface use by the Department of Natural Resources, its Offices or Commissions, as herein above reserved.

Applicant: THEOPHILUS OIL, GAS & LAND SERVICES, LLC

Bidder	Cash Payment	Price/Acre	Rental	Oil	Gas	Other



Legend
17050048
Counties
IMAGERY:DOQQ_2008_1M_CIR

ASSUMPTION PARISH

T13S - R12E

OLD RIVER

LITTLE GODDEL BAYOU

IBERIA PARISH

BAYOU LONG

P.O.B.

0 3,000 Feet

T13S - R11E

ST MARTIN PARISH