

TRACT 42621 - Assumption Iberia and St. Martin Parishes, Louisiana

All of the lands now or formerly constituting the beds and bottoms of all water bodies of every nature and description as to which title is vested in the State of Louisiana, together with all islands arising therein and other lands formed by accretion or by reliction, where allowed by law, excepting tax adjudicated lands, and not presently under mineral lease on May 9, 2012, situated in Assumption Iberia and St. Martin Parishes, Louisiana, and more particularly described as follows: Beginning at a point having Coordinates of X = 2,029,912.33 and Y = 475,860.00; thence South 15,840.00 feet to a point having Coordinates of X = 2,029,912.33 and Y = 460,020.00; thence West approximately 3,394 feet to a point on the East boundary of the Atchafalaya Basin having Coordinate of Y = 460,020.00; thence Northerly along the East boundary of said Atchafalaya Basin to the point of intersection with a East/West line having a Coordinate of Y = 475,860.00; thence East approximately 7,750 feet to the point of beginning, **LESS AND EXCEPT** that portion, if any, of the above described tract that may lie inside of the boundary of the Atchafalaya Basin, and **LESS AND EXCEPT** any right, title, and interest in lands owned by and not under lease from the State of Louisiana, on behalf of the St. Martin Parish School Board, situated in Section 16, Township 13 South, Range 12 East, St. Martin Parish, Louisiana, contained within the above described tract, containing approximately **140 acres**, all as more particularly outlined on a plat on file in the Office of Mineral Resources, Department of Natural Resources. All bearings, distances and coordinates are based on Louisiana Coordinate System of 1927, (North or South Zone), where applicable.

NOTE: The above description of the Tract nominated for lease has been provided and corrected, where required, exclusively by the nomination party. Any mineral lease selected from this Tract and awarded by the Louisiana State Mineral and Energy Board shall be without warranty of any kind, either express, implied, or statutory, including, but not limited to, the implied warranties of merchantability and fitness for a particular purpose. Should the mineral lease awarded by the Louisiana State Mineral and Energy Board be subsequently modified, cancelled or abrogated due to the existence of conflicting leases, operating agreements, private claims or other future obligations or conditions which may affect all or any portion of the leased Tract, it shall not relieve the Lessee of the obligation to pay any bonus due thereon to the Louisiana State Mineral and Energy Board, nor shall the Louisiana State Mineral and Energy Board be obligated to refund any consideration paid by the Lessor prior to such modification, cancellation, or abrogation, including, but not limited to, bonuses, rentals and royalties.

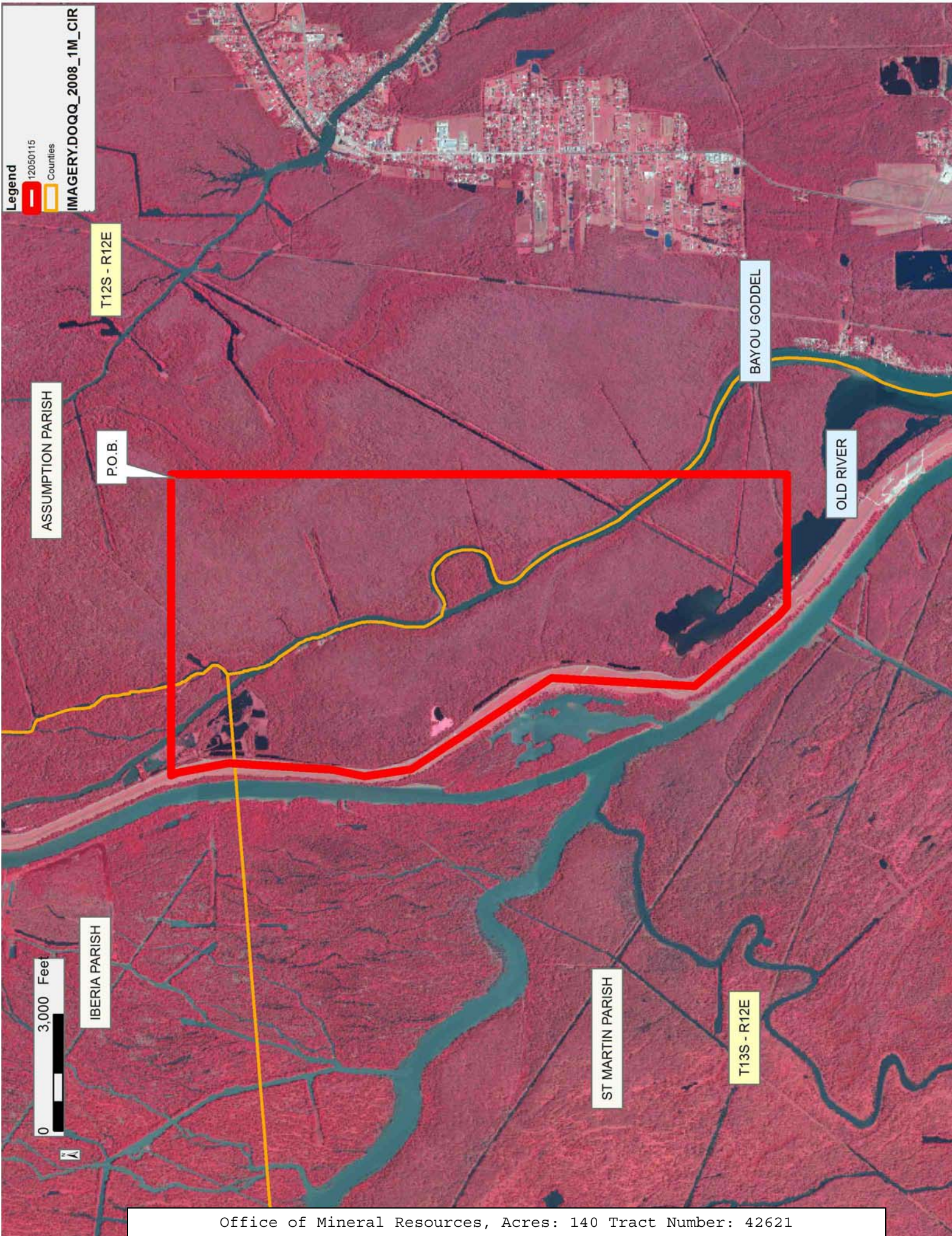
NOTE: This lease shall be for a primary term of five (5) years.

NOTE: The State of Louisiana does hereby reserve, and this lease shall be subject to, the imprescriptible right of surface use in the nature of a servitude in favor of the Department of Natural Resources, including its Offices and Commissions, for the sole purpose of implementing,

constructing, servicing and maintaining approved coastal zone management and/or restoration projects. Utilization of any and all rights derived under this lease by the mineral lessee, its agents, successors or assigns, shall not interfere with nor hinder the reasonable surface use by the Department of Natural Resources, its Offices or Commissions, as herein above reserved.

Applicant: THEOPHILUS OIL, GAS & LAND SERVICES, LLC

Bidder	Cash Payment	Price/ Acre	Rental	Oil	Gas	Other



TRACT 42622 - Assumption and St. Martin Parishes, Louisiana

All of the lands now or formerly constituting the beds and bottoms of all water bodies of every nature and description as to which title is vested in the State of Louisiana, together with all islands arising therein and other lands formed by accretion or by reliction, where allowed by law, excepting tax adjudicated lands, and not presently under mineral lease on May 9, 2012, situated in Assumption and St. Martin Parishes, Louisiana, and more particularly described as follows: Beginning at a point having Coordinates of X = 2,029,912.33 and Y = 475,860.00; thence East 16,302.66 feet to a point having Coordinates of X = 2,046,214.99 and Y = 475,860.00; thence South 6,920.02 feet to the Northeast corner of State Lease No. 20142 having Coordinates of X = 2,046,214.99 and Y = 468,939.98; thence along the North and Southwest boundary of said State Lease No. 20142 the following courses and distances: West 2,514.99 feet to a corner having Coordinates of X = 2,043,700.00 and Y = 468,939.98, South 05 degrees 42 minutes 38 seconds East 402.00 feet to a corner having Coordinates of X = 2,043,740.00 and Y = 468,539.98, South 10 degrees 10 minutes 32 seconds East 396.23 feet to a corner having Coordinates of X = 2,043,810.00 and Y = 468,149.98, South 20 degrees 19 minutes 23 seconds East 287.92 feet to a corner having Coordinates of X = 2,043,910.00 and Y = 467,879.99, South 25 Degrees 47 minutes 14 seconds East 494.23 feet to a corner having Coordinates of X = 2,044,125.00 and Y = 467,434.98, South 31 degrees 23 minutes 58 seconds East 451.05 feet to a corner having Coordinates of X = 2,044,360.00 and Y = 467,049.99, South 36 degrees 39 minutes 22 seconds East 804.01 feet to a corner having Coordinates of X = 2,044,840.00 and Y = 466,404.98, South 42 degrees 57 minutes 17 seconds East 396.23 feet to a corner having Coordinates of X = 2,045,110.00 and Y = 466,114.98, South 54 degrees 32 minutes 40 seconds East 405.12 feet to a corner having Coordinates of X = 2,045,439.99 and Y = 465,879.99, South 61 degrees 47 minutes 54 seconds East 391.47 feet to a corner having Coordinates of X = 2,045,784.99 and Y = 465,694.99 and South 74 degrees 24 minutes 26 seconds East 446.43 feet to its Southeast corner having Coordinates of X = 2,046,214.99 and Y = 465,574.99; thence South 5,554.99 feet to a point having Coordinates of X = 2,046,214.99 and Y = 460,020.00; thence West 16,302.66 feet to a point having Coordinates of X = 2,029,912.33 and Y = 460,020.00; thence North 15,840.00 feet to the point of beginning, (This lease includes only waterbottoms claimed and owned by the state and specifically excludes any land which the state may claim or own and to which the mineral rights are vested in the state), containing approximately **484 acres**, all as more particularly outlined on a plat on file in the Office of Mineral Resources, Department of Natural Resources. All bearings, distances and coordinates are based on Louisiana Coordinate System of 1927, (North or South Zone), where applicable.

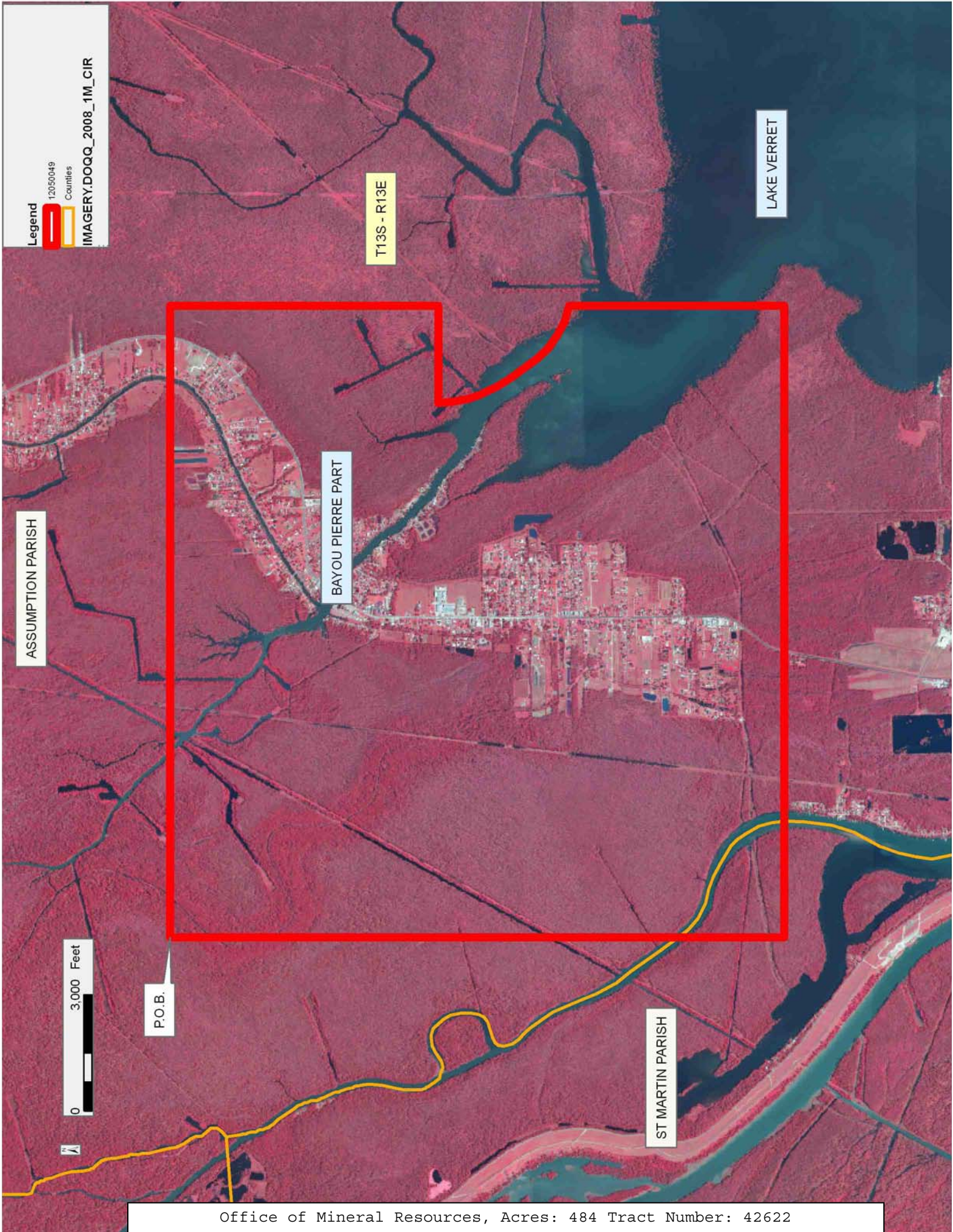
NOTE: The above description of the Tract nominated for lease has been provided and corrected, where required, exclusively by the nomination party. Any mineral lease selected from this Tract and awarded by the Louisiana State Mineral and Energy Board shall be without warranty of any kind, either express, implied, or statutory, including, but not limited

to, the implied warranties of merchantability and fitness for a particular purpose. Should the mineral lease awarded by the Louisiana State Mineral and Energy Board be subsequently modified, cancelled or abrogated due to the existence of conflicting leases, operating agreements, private claims or other future obligations or conditions which may affect all or any portion of the leased Tract, it shall not relieve the Lessee of the obligation to pay any bonus due thereon to the Louisiana State Mineral and Energy Board, nor shall the Louisiana State Mineral and Energy Board be obligated to refund any consideration paid by the Lessor prior to such modification, cancellation, or abrogation, including, but not limited to, bonuses, rentals and royalties.

NOTE: This lease shall be for a primary term of five (5) years.

Applicant: THEOPHILUS OIL, GAS & LAND SERVICES, LLC

Bidder	Cash Payment	Price/ Acre	Rental	Oil	Gas	Other



TRACT 42623 - Iberia and St. Martin Parishes, Louisiana

All of the lands now or formerly constituting the beds and bottoms of all water bodies of every nature and description as to which title is vested in the State of Louisiana, together with all islands arising therein and other lands formed by accretion or by reliction, where allowed by law, excepting tax adjudicated lands, and not presently under mineral lease on May 9, 2012, situated in Iberia and St. Martin Parishes, Louisiana, and more particularly described as follows: Beginning at a point having Coordinates of X = 1,981,300.00 and Y = 475,860.00; thence East 16,053.60 feet to a point having Coordinates of X = 1,997,353.60 and Y = 475,860.00; thence South 15,840.00 feet to a point having Coordinates of X = 1,997,353.60 and Y = 460,020.00; thence West 16,053.60 feet to a point having Coordinates of X = 1,981,300.00 and Y = 460,020.00; thence North 15,840.00 feet to the point of beginning, **LESS AND EXCEPT** any right, title, and interest in lands owned by and not under lease from the State of Louisiana, on behalf of the St. Martin and Iberia Parish School Boards, situated in Section 16, Township 13 South, Range 11 East, St. Martin Parish, Louisiana, contained within the above described tract, containing approximately **154 acres**, all as more particularly outlined on a plat on file in the Office of Mineral Resources, Department of Natural Resources. All bearings, distances and coordinates are based on Louisiana Coordinate System of 1927, (North or South Zone), where applicable.

NOTE: The above description of the Tract nominated for lease has been provided and corrected, where required, exclusively by the nomination party. Any mineral lease selected from this Tract and awarded by the Louisiana State Mineral and Energy Board shall be without warranty of any kind, either express, implied, or statutory, including, but not limited to, the implied warranties of merchantability and fitness for a particular purpose. Should the mineral lease awarded by the Louisiana State Mineral and Energy Board be subsequently modified, cancelled or abrogated due to the existence of conflicting leases, operating agreements, private claims or other future obligations or conditions which may affect all or any portion of the leased Tract, it shall not relieve the Lessee of the obligation to pay any bonus due thereon to the Louisiana State Mineral and Energy Board, nor shall the Louisiana State Mineral and Energy Board be obligated to refund any consideration paid by the Lessor prior to such modification, cancellation, or abrogation, including, but not limited to, bonuses, rentals and royalties.

NOTE: This acreage is entirely within the boundary of the Atchafalaya Basin Legal area.

NOTE: This lease shall be for a primary term of five (5) years.

Applicant: THEOPHILUS OIL, GAS & LAND SERVICES, LLC

Bidder	Cash Payment	Price/ Acre	Rental	Oil	Gas	Other

Legend

12050046

IMAGERY.DOQQ_2008_1M_CIR



IBERIA PARISH

T12S - R11E

BIG BAYOU PIGEON

P.O.B.



T13S - R11E

ST MARTIN PARISH

WEST FORK BAYOU LONG

GRAND LAKE

TRACT 42624 - Assumption and St. Martin Parishes, Louisiana

The State Mineral and Energy Board acting on behalf of the St. Martin Parish, Assumption Parish and Iberia Parish School Boards, pursuant to Resolution(s) adopted by that (those) body(ies) and in accordance with Louisiana Revised Statutes 30:121-136 and 151-156, as amended, and Article XIV, Section 16(A)(9) and (B) of the Louisiana Constitution of 1974, as same may be continued and promulgated in proper statutory form and, further, amended from time to time, advertises the lands not under mineral lease on May 9, 2012, excluding the beds and bottoms of all navigable water bodies located within the following: All or a portion of Section 16, Township 13 South, Range 12 East in Assumption and St. Martin Parishes, Louisiana, containing approximately **577.99 acres**, all as more particularly outlined on a plat on file in the Office of Mineral Resources, Department of Natural Resources. All bearings, distances and coordinates are based on Louisiana Coordinate System of 1927, (North or South Zone).

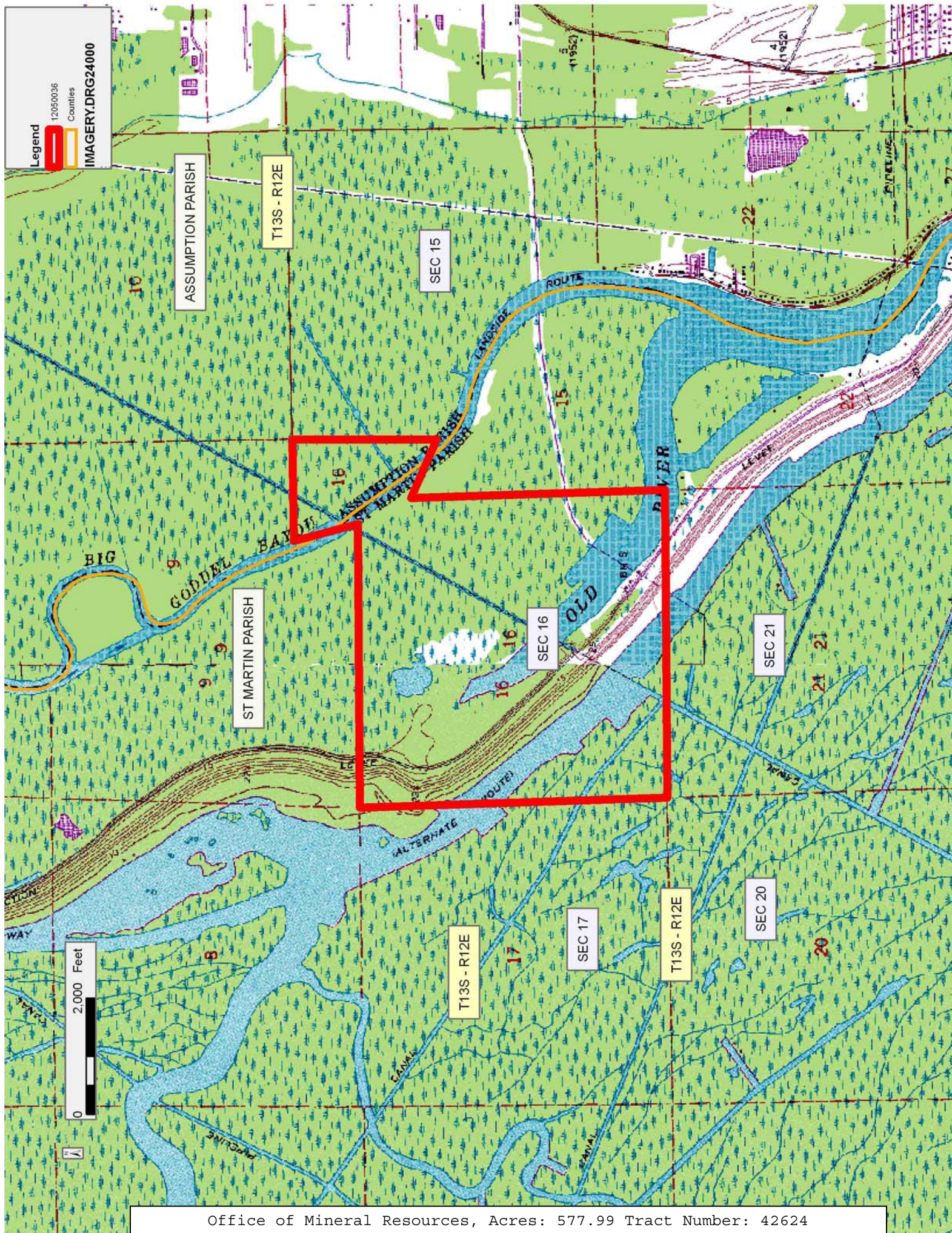
NOTE: The above description of the Tract nominated for lease has been provided and corrected, where required, exclusively by the nomination party. Any mineral lease selected from this Tract and awarded by the Louisiana State Mineral and Energy Board shall be without warranty of any kind, either express, implied, or statutory, including, but not limited to, the implied warranties of merchantability and fitness for a particular purpose. Should the mineral lease awarded by the Louisiana State Mineral and Energy Board be subsequently modified, cancelled or abrogated due to the existence of conflicting leases, operating agreements, private claims or other future obligations or conditions which may affect all or any portion of the leased Tract, it shall not relieve the Lessee of the obligation to pay any bonus due thereon to the Louisiana State Mineral and Energy Board, nor shall the Louisiana State Mineral and Energy Board be obligated to refund any consideration paid by the Lessor prior to such modification, cancellation, or abrogation, including, but not limited to, bonuses, rentals and royalties.

NOTE: Lessors acknowledge that said Township 13 South, Range 12 East, is located 57.07% in the Parish of St. Martin, 42.06% in the Parish of Assumption, and 0.87% in the Parish of Iberia; and Lessee is authorized and directed to pay any and all rentals and royalties which may accrue under the terms of this lease to Lessors separately and in the following proportions: St. Martin Parish School Board 57.07%, Assumption Parish School Board 42.06%, and Iberia Parish School Board 0.87% and prospective bidders are hereby placed on notice that execution by the State Mineral Board of oil, gas and mineral lease on behalf of the St. Martin Parish School Board, the Assumption Parish School Board and the Iberia Parish School Board on the above described portion of section shall not be construed as a waiver by the State Mineral Board of any rights that it may have to lease for and on behalf of the State of Louisiana any navigable water bottoms that might be included within said portion of said section.

NOTE: A minimum bonus of \$200 per acre and a minimum royalty of 25% shall be required.

Applicant: PINNACLE LEASING, L.L.C.

Bidder	Cash Payment	Price/ Acre	Rental	Oil	Gas	Other



TRACT 42625 - St. Martin Parish, Louisiana

The State Mineral and Energy Board acting on behalf of the St. Martin Parish and Iberia Parish School Boards, pursuant to Resolution(s) adopted by that (those) body(ies) and in accordance with Louisiana Revised Statutes 30:121-136 and 151-156, as amended, and Article XIV, Section 16(A)(9) and (B) of the Louisiana Constitution of 1974, as same may be continued and promulgated in proper statutory form and, further, amended from time to time, advertises the lands not under mineral lease on May 9, 2012, excluding the beds and bottoms of all navigable water bodies located within the following: All or a portion of Section 16, Township 13 South, Range 11 East in St. Martin Parish, Louisiana, containing approximately **639 acres**, all as more particularly outlined on a plat on file in the Office of Mineral Resources, Department of Natural Resources. All bearings, distances and coordinates are based on Louisiana Coordinate System of 1927, (North or South Zone).

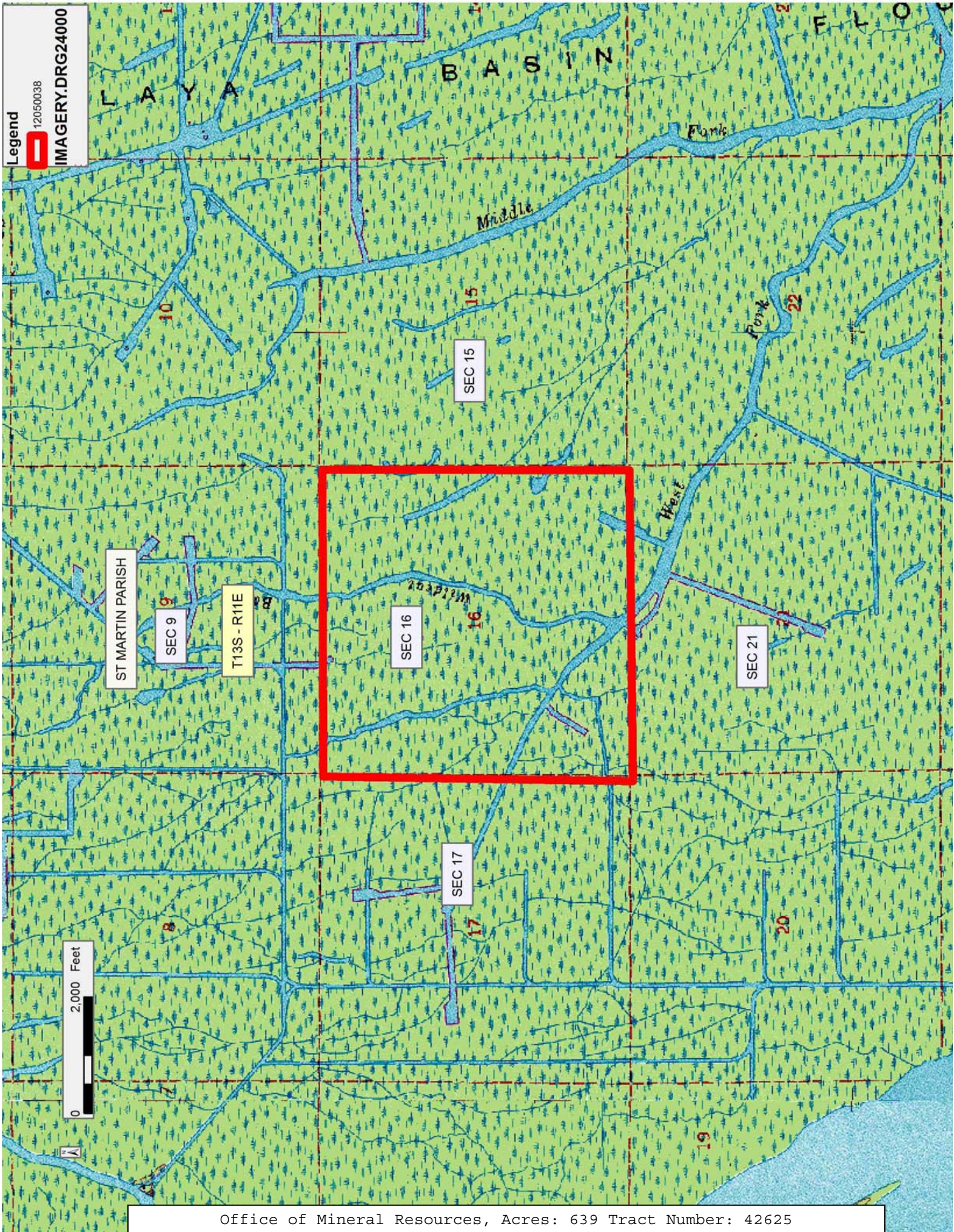
NOTE: The above description of the Tract nominated for lease has been provided and corrected, where required, exclusively by the nomination party. Any mineral lease selected from this Tract and awarded by the Louisiana State Mineral and Energy Board shall be without warranty of any kind, either express, implied, or statutory, including, but not limited to, the implied warranties of merchantability and fitness for a particular purpose. Should the mineral lease awarded by the Louisiana State Mineral and Energy Board be subsequently modified, cancelled or abrogated due to the existence of conflicting leases, operating agreements, private claims or other future obligations or conditions which may affect all or any portion of the leased Tract, it shall not relieve the Lessee of the obligation to pay any bonus due thereon to the Louisiana State Mineral and Energy Board, nor shall the Louisiana State Mineral and Energy Board be obligated to refund any consideration paid by the Lessor prior to such modification, cancellation, or abrogation, including, but not limited to, bonuses, rentals and royalties.

NOTE: Lessors acknowledge that said Township 13 South, Range 11 East, is located 90.80% in the Parish of St. Martin and 9.20% in the Parish of Iberia; and Lessee is authorized and directed to pay any and all rentals and royalties which may accrue under the terms of this lease to Lessors separately and in the following proportions: St. Martin Parish School Board 90.80% and Iberia Parish School Board 9.20% and prospective bidders are hereby placed on notice that execution by the State Mineral Board of oil, gas and mineral lease on behalf of the St. Martin Parish School Board and the Iberia Parish School Board on the above described portion of section shall not be construed as a waiver by the State Mineral Board of any rights that it may have to lease for and on behalf of the State of Louisiana any navigable water bottoms that might be included within said portion of said section.

NOTE: There shall be a minimum bonus of not less than \$200 per acre and a minimum royalty payment of not less than 25%.

Applicant: PINNACLE LEASING, L.L.C.

Bidder	Cash Payment	Price/ Acre	Rental	Oil	Gas	Other



TRACT 42626 - Assumption Parish, Louisiana

All of the lands now or formerly constituting the beds and bottoms of all water bodies of every nature and description as to which title is vested in the State of Louisiana, together with all islands arising therein and other lands formed by accretion or by reliction, where allowed by law, excepting tax adjudicated lands, and not presently under mineral lease on May 9, 2012, situated in Assumption Parish, Louisiana, and more particularly described as follows: Beginning at a point having Coordinates of X = 2,046,214.99 and Y = 460,020.00; thence East 7,140.87 feet to a point on the West Boundary of State Lease No. 20340 having Coordinates of X = 2,053,355.86 and Y = 460,020.00; thence along the West, South and East boundary of said State Lease No. 20340 the following courses and distances: South 51 degrees 21 minutes 37 seconds East 2,232.97 feet to a corner having Coordinates of X = 2,055,100.00 and Y = 458,625.69, South 2,025.69 feet to a corner having Coordinates of X = 2,055,100.00 and Y = 456,600.00, East 3,440.00 feet to a corner having Coordinates of X = 2,058,540.00 and Y = 456,600.00 and North 3,420.00 feet to a point having Coordinates of X = 2,058,540.00 and Y = 460,020.00; thence East 3,173.31 feet to a point having Coordinates of X = 2,061,713.31 and Y = 460,020.00; thence South 7,860.00 feet to a point having Coordinates of X = 2,061,713.31 and Y = 452,160.00; thence West approximately 15,414 feet to a point on the East boundary of State Lease No. 346, as amended having a Coordinate of Y = 452,160.00; thence Northerly approximately 84 feet along the East boundary of said State Lease No. 346 to its Northeast corner; thence Northerly approximately 7,776 feet to the point of beginning, **LESS AND EXCEPT** any portion of State Lease 346 that may fall within the above described tract, (This tract includes only waterbottoms claimed and owned by the state and specifically excludes any land which the state or Wildlife and Fisheries may claim or own and to which the mineral rights are vested in them), containing approximately **2,103 acres**, all as more particularly outlined on a plat on file in the Office of Mineral Resources, Department of Natural Resources. All bearings, distances and coordinates are based on Louisiana Coordinate System of 1927, (North or South Zone), where applicable.

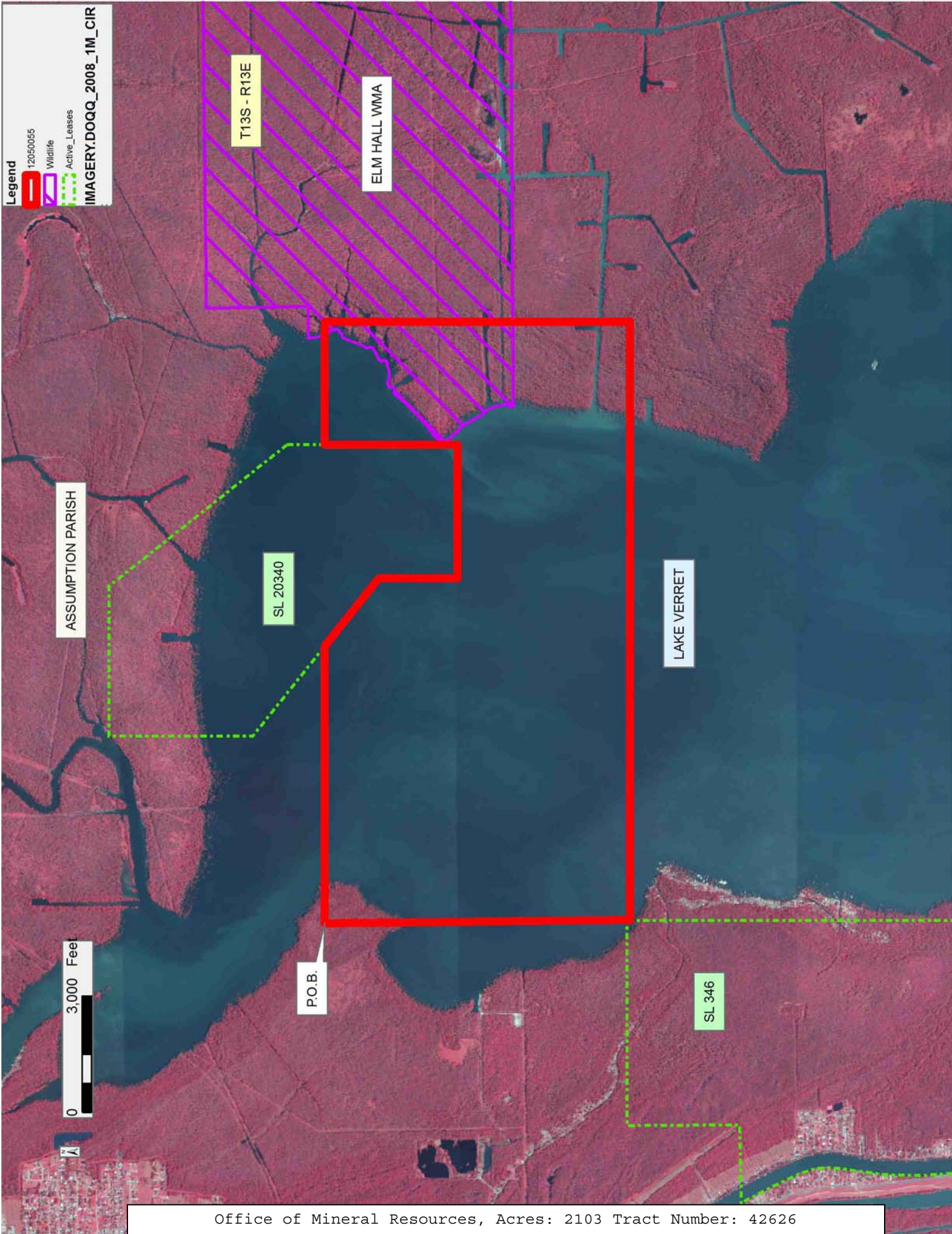
NOTE: The above description of the Tract nominated for lease has been provided and corrected, where required, exclusively by the nomination party. Any mineral lease selected from this Tract and awarded by the Louisiana State Mineral and Energy Board shall be without warranty of any kind, either express, implied, or statutory, including, but not limited to, the implied warranties of merchantability and fitness for a particular purpose. Should the mineral lease awarded by the Louisiana State Mineral and Energy Board be subsequently modified, cancelled or abrogated due to the existence of conflicting leases, operating agreements, private claims or other future obligations or conditions which may affect all or any portion of the leased Tract, it shall not relieve the Lessee of the obligation to pay any bonus due thereon to the Louisiana State Mineral and Energy Board, nor shall the Louisiana State Mineral and Energy Board be obligated to refund any consideration paid by the Lessor prior to such

modification, cancellation, or abrogation, including, but not limited to, bonuses, rentals and royalties.

NOTE: This lease shall be for a primary term of five (5) years.

Applicant: THEOPHILUS OIL, GAS & LAND SERVICES, LLC

Bidder	Cash Payment	Price/ Acre	Rental	Oil	Gas	Other



TRACT 42627 - St. Martin Parish, Louisiana

All of the lands now or formerly constituting the beds and bottoms of all water bodies of every nature and description as to which title is vested in the State of Louisiana, together with all islands arising therein and other lands formed by accretion or by reliction, where allowed by law, excepting tax adjudicated lands, and not presently under mineral lease on May 9, 2012, situated in St. Martin Parish, Louisiana, and more particularly described as follows: Beginning at a point having Coordinates of X = 1,997,353.60 and Y = 460,020.00; thence East 16,256.06 feet to a point having Coordinates of X = 2,013,609.66 and Y = 460,020.00; thence South 15,840.00 feet to a point having Coordinates of X = 2,013,609.66 and Y = 444,180.00; thence West 16,256.06 feet to a point having Coordinates of X = 1,997,353.60 and Y = 444,180.00; thence North 15,840.00 feet to the point of beginning, (This tract includes only waterbottoms claimed and owned by the state and specifically excludes any land which the state may claim or own and to which the mineral rights are vested in the state), containing approximately **215 acres**, all as more particularly outlined on a plat on file in the Office of Mineral Resources, Department of Natural Resources. All bearings, distances and coordinates are based on Louisiana Coordinate System of 1927, (North or South Zone), where applicable.

NOTE: The above description of the Tract nominated for lease has been provided and corrected, where required, exclusively by the nomination party. Any mineral lease selected from this Tract and awarded by the Louisiana State Mineral and Energy Board shall be without warranty of any kind, either express, implied, or statutory, including, but not limited to, the implied warranties of merchantability and fitness for a particular purpose. Should the mineral lease awarded by the Louisiana State Mineral and Energy Board be subsequently modified, cancelled or abrogated due to the existence of conflicting leases, operating agreements, private claims or other future obligations or conditions which may affect all or any portion of the leased Tract, it shall not relieve the Lessee of the obligation to pay any bonus due thereon to the Louisiana State Mineral and Energy Board, nor shall the Louisiana State Mineral and Energy Board be obligated to refund any consideration paid by the Lessor prior to such modification, cancellation, or abrogation, including, but not limited to, bonuses, rentals and royalties.

NOTE: This acreage is entirely within the boundary of the Atchafalaya Legal Basin area.

NOTE: This lease shall be for a primary term of five (5) years.

Applicant: THEOPHILUS OIL, GAS & LAND SERVICES, LLC

Bidder	Cash Payment	Price/ Acre	Rental	Oil	Gas	Other

Legend

12050052

IMAGERY.DOQQ_2008_1M_CIR

ST MARTIN PARISH

T13S - R11E

BAYOU LONG

T14S - R12E

LITTLE BAYOU LONG

T14S - R11E

P.O.B.

0 3,000 Feet

N

TRACT 42628 - St. Martin Parish, Louisiana

All of the lands now or formerly constituting the beds and bottoms of all water bodies of every nature and description as to which title is vested in the State of Louisiana, together with all islands arising therein and other lands formed by accretion or by reliction, where allowed by law, excepting tax adjudicated lands, and not presently under mineral lease on May 9, 2012, situated in St. Martin Parish, Louisiana, and more particularly described as follows: Beginning at a point having Coordinates of X = 2,013,609.66 and Y = 460,020.00; thence East approximately 12,908 feet to a point on the East boundary of the Atchafalaya Basin having a Coordinate of Y = 460,020.00; thence Southeasterly along the East boundary of said Atchafalaya Basin to the point of intersection with a North/South line having a Coordinate of X = 2,029,912.33; thence South approximately 12,875 feet to a point having Coordinates of X = 2,029,912.33 and Y = 444,180.00; thence West 16,302.66 feet to a point having Coordinates of X = 2,013,609.66 and Y = 444,180.00; thence North 15,840.00 feet to the point of beginning, **LESS AND EXCEPT** that portion, if any, of the above described tract that may lie outside of the boundary of the Atchafalaya Basin, and **LESS AND EXCEPT** any right, title, and interest in lands owned by and not under lease from the State of Louisiana, on behalf of the St. Martin Parish School Board, situated in Section 16, Township 13 South, Range 12 East, St. Martin Parish, Louisiana, contained within the above described tract, (This tract includes only waterbottoms claimed and owned by the state and specifically excludes any land which the state may claim or own and to which the mineral rights are vested in the state), containing approximately **92 acres**, all as more particularly outlined on a plat on file in the Office of Mineral Resources, Department of Natural Resources. All bearings, distances and coordinates are based on Louisiana Coordinate System of 1927, (North or South Zone), where applicable.

NOTE: The above description of the Tract nominated for lease has been provided and corrected, where required, exclusively by the nomination party. Any mineral lease selected from this Tract and awarded by the Louisiana State Mineral and Energy Board shall be without warranty of any kind, either express, implied, or statutory, including, but not limited to, the implied warranties of merchantability and fitness for a particular purpose. Should the mineral lease awarded by the Louisiana State Mineral and Energy Board be subsequently modified, cancelled or abrogated due to the existence of conflicting leases, operating agreements, private claims or other future obligations or conditions which may affect all or any portion of the leased Tract, it shall not relieve the Lessee of the obligation to pay any bonus due thereon to the Louisiana State Mineral and Energy Board, nor shall the Louisiana State Mineral and Energy Board be obligated to refund any consideration paid by the Lessor prior to such modification, cancellation, or abrogation, including, but not limited to, bonuses, rentals and royalties.

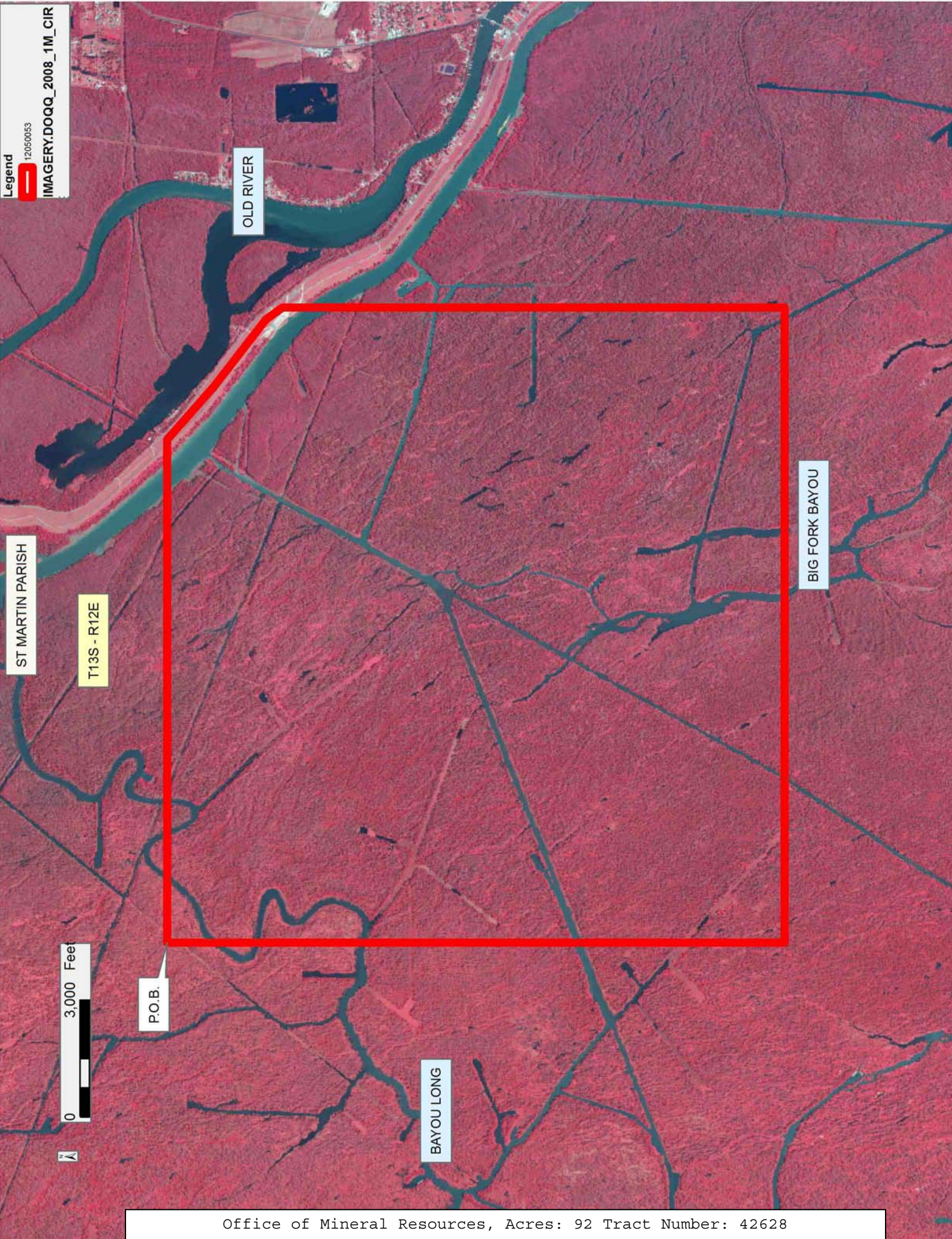
NOTE: This acreage is entirely within the boundary of the Atchafalaya Basin Legal area.

NOTE: This lease shall be for a primary term of five (5) years.

NOTE: The State of Louisiana does hereby reserve, and this lease shall be subject to, the imprescriptible right of surface use in the nature of a servitude in favor of the Department of Natural Resources, including its Offices and Commissions, for the sole purpose of implementing, constructing, servicing and maintaining approved coastal zone management and/or restoration projects. Utilization of any and all rights derived under this lease by the mineral lessee, its agents, successors or assigns, shall not interfere with nor hinder the reasonable surface use by the Department of Natural Resources, its Offices or Commissions, as herein above reserved.

Applicant: THEOPHILUS OIL, GAS & LAND SERVICES LLC

Bidder	Cash Payment	Price/ Acre	Rental	Oil	Gas	Other



TRACT 42629 - St. Martin Parish, Louisiana

All of the lands now or formerly constituting the beds and bottoms of all water bodies of every nature and description as to which title is vested in the State of Louisiana, together with all islands arising therein and other lands formed by accretion or by reliction, where allowed by law, excepting tax adjudicated lands, and not presently under mineral lease on May 9, 2012, situated in St. Martin Parish, Louisiana, and more particularly described as follows: Beginning at a point having Coordinates of X = 2,029,912.33 and Y = 460,020.00; thence South approximately 2,965 feet to a point on the East boundary of the Atchafalaya Basin having a Coordinate of X = 2,029,912.33; thence Northwesterly along the East boundary of said Atchafalaya Basin to the point of intersection with a East/West line having a Coordinate of Y = 460,020.00; thence West approximately 3,394 feet to the point of beginning, **LESS AND EXCEPT** that portion, if any, of the above described tract that may lie inside of the boundary of the Atchafalaya Basin, and **LESS AND EXCEPT** any right, title, and interest in lands owned by and not under lease from the State of Louisiana, on behalf of the St. Martin Parish School Board, situated in Section 16, Township 13 South, Range 12 East, St. Martin Parish, Louisiana, contained within the above described tract, containing approximately **36 acres**, all as more particularly outlined on a plat on file in the Office of Mineral Resources, Department of Natural Resources. All bearings, distances and coordinates are based on Louisiana Coordinate System of 1927, (North or South Zone), where applicable.

NOTE: The above description of the Tract nominated for lease has been provided and corrected, where required, exclusively by the nomination party. Any mineral lease selected from this Tract and awarded by the Louisiana State Mineral and Energy Board shall be without warranty of any kind, either express, implied, or statutory, including, but not limited to, the implied warranties of merchantability and fitness for a particular purpose. Should the mineral lease awarded by the Louisiana State Mineral and Energy Board be subsequently modified, cancelled or abrogated due to the existence of conflicting leases, operating agreements, private claims or other future obligations or conditions which may affect all or any portion of the leased Tract, it shall not relieve the Lessee of the obligation to pay any bonus due thereon to the Louisiana State Mineral and Energy Board, nor shall the Louisiana State Mineral and Energy Board be obligated to refund any consideration paid by the Lessor prior to such modification, cancellation, or abrogation, including, but not limited to, bonuses, rentals and royalties.

NOTE: This lease shall be for a primary term of five (5) years.

NOTE: The State of Louisiana does hereby reserve, and this lease shall be subject to, the imprescriptible right of surface use in the nature of a servitude in favor of the Department of Natural Resources, including its Offices and Commissions, for the sole purpose of implementing, constructing, servicing and maintaining approved coastal zone management

and/or restoration projects. Utilization of any and all rights derived under this lease by the mineral lessee, its agents, successors or assigns, shall not interfere with nor hinder the reasonable surface use by the Department of Natural Resources, its Offices or Commissions, as herein above reserved.

Applicant: THEOPHILUS OIL, GAS & LAND SERVICES, LLC

Bidder	Cash Payment	Price/ Acre	Rental	Oil	Gas	Other

Legend

2050116

Counties

IMAGERY.DOQQ_2008_1M_CIR

T13S - R12E

ST MARTIN PARISH

P.O.B.

OLD RIVER

T13S - R12E



TRACT 42630 - Assumption and St. Martin Parishes, Louisiana

All of the lands now or formerly constituting the beds and bottoms of all water bodies of every nature and description as to which title is vested in the State of Louisiana, together with all islands arising therein and other lands formed by accretion or by reliction, where allowed by law, excepting tax adjudicated lands, and not presently under mineral lease on May 9, 2012, situated in Assumption and St. Martin Parishes, Louisiana, and more particularly described as follows: Beginning at a point having Coordinates of X = 2,029,912.33 and Y = 460,020.00; thence East 16,302.66 feet to a point having Coordinates of X = 2,046,214.99 and Y = 460,020.00; thence Southerly approximately 7,776 feet to the Northeast corner of State Lease No. 346, as amended; thence along the boundary of said State Lease No. 346 the following courses: Westerly, Southerly, Westerly, Southerly and Westerly to the point of intersection with the East boundary of the Atchafalaya Basin; thence Northerly and Northwesterly along the East boundary of said Atchafalaya Basin to the point of intersection with an North/South line having a Coordinate of X = 2,029,912.33; thence North approximately 2,965 feet to the point of beginning, **LESS AND EXCEPT** that portion, if any, of the above described tract that may lie inside of the boundary of the Atchafalaya Basin, and **LESS AND EXCEPT** any portion of State Lease 346 that may fall within the above described tract, containing approximately **422 acres**, all as more particularly outlined on a plat on file in the Office of Mineral Resources, Department of Natural Resources. All bearings, distances and coordinates are based on Louisiana Coordinate System of 1927, (North or South Zone), where applicable.

NOTE: The above description of the Tract nominated for lease has been provided and corrected, where required, exclusively by the nomination party. Any mineral lease selected from this Tract and awarded by the Louisiana State Mineral and Energy Board shall be without warranty of any kind, either express, implied, or statutory, including, but not limited to, the implied warranties of merchantability and fitness for a particular purpose. Should the mineral lease awarded by the Louisiana State Mineral and Energy Board be subsequently modified, cancelled or abrogated due to the existence of conflicting leases, operating agreements, private claims or other future obligations or conditions which may affect all or any portion of the leased Tract, it shall not relieve the Lessee of the obligation to pay any bonus due thereon to the Louisiana State Mineral and Energy Board, nor shall the Louisiana State Mineral and Energy Board be obligated to refund any consideration paid by the Lessor prior to such modification, cancellation, or abrogation, including, but not limited to, bonuses, rentals and royalties.

NOTE: This lease shall be for a primary term of five (5) years.

NOTE: The State of Louisiana does hereby reserve, and this lease shall be subject to, the imprescriptible right of surface use in the nature of a servitude in favor of the Department of Natural Resources, including its Offices and Commissions, for the sole purpose of implementing,

constructing, servicing and maintaining approved coastal zone management and/or restoration projects. Utilization of any and all rights derived under this lease by the mineral lessee, its agents, successors or assigns, shall not interfere with nor hinder the reasonable surface use by the Department of Natural Resources, its Offices or Commissions, as herein above reserved.

Applicant: THEOPHILUS OIL, GAS & LAND SERVICES, LLC

Bidder	Cash Payment	Price/ Acre	Rental	Oil	Gas	Other

