

TRACT 42631 - St. Martin Parish, Louisiana

All of the lands now or formerly constituting the beds and bottoms of all water bodies of every nature and description as to which title is vested in the State of Louisiana, together with all islands arising therein and other lands formed by accretion or by reliction, where allowed by law, excepting tax adjudicated lands, and not presently under mineral lease on May 9, 2012, situated in St. Martin Parish, Louisiana, and more particularly described as follows: Beginning at a point having Coordinates of X = 1,981,300.00 and Y = 460,020.00; thence East 16,053.60 feet to a point having Coordinates of X = 1,997,353.60 and Y = 460,020.00; thence South 15,840.00 feet to a point having Coordinates of X = 1,997,353.60 and Y = 444,180.00; thence West approximately 11,453 feet to a point on the Easterly boundary of the Attakapas Island Wildlife Management Area feet to a point having a Coordinate of Y = 444,180.00; thence Northerly along the Easterly boundary of the said Attakapas Island Wildlife Management Area to a point of intersection with a North/South line having a Coordinate of X = 1,981,300.00; thence North approximately 2,166 feet to the point of beginning, **LESS AND EXCEPT** any right, title, and interest in lands owned by and not under lease from the State of Louisiana, on behalf of the St. Martin and Iberia Parish School Boards, situated in Section 16, Township 13 South, Range 11 East, St. Martin Parish, Louisiana, contained within the above described tract, and **LESS AND EXCEPT** any portion of the Attakapas Island Wildlife Management Area that lies within the above described tract, containing approximately **1,133 acres**, all as more particularly outlined on a plat on file in the Office of Mineral Resources, Department of Natural Resources. All bearings, distances and coordinates are based on Louisiana Coordinate System of 1927, (North or South Zone), where applicable.

NOTE: The above description of the Tract nominated for lease has been provided and corrected, where required, exclusively by the nomination party. Any mineral lease selected from this Tract and awarded by the Louisiana State Mineral and Energy Board shall be without warranty of any kind, either express, implied, or statutory, including, but not limited to, the implied warranties of merchantability and fitness for a particular purpose. Should the mineral lease awarded by the Louisiana State Mineral and Energy Board be subsequently modified, cancelled or abrogated due to the existence of conflicting leases, operating agreements, private claims or other future obligations or conditions which may affect all or any portion of the leased Tract, it shall not relieve the Lessee of the obligation to pay any bonus due thereon to the Louisiana State Mineral and Energy Board, nor shall the Louisiana State Mineral and Energy Board be obligated to refund any consideration paid by the Lessor prior to such modification, cancellation, or abrogation, including, but not limited to, bonuses, rentals and royalties.

NOTE: This acreage is entirely within the boundary of the Atchafalaya Basin Legal Area.

NOTE: This lease shall be for a primary term of five (5) years.

Applicant: THEOPHILUS OIL, GAS & LAND SERVICES, LLC

Bidder	Cash Payment	Price/Acre	Rental	Oil	Gas	Other

Legend
12050051
Wildlife
IMAGERY.DOQQ_2008_1M_CIR

WEST FORK BAYOU LONG

T13S - R11E

ST MARTIN PARISH

0 3,200 Feet

P.O.B.

GRAND LAKE

ATTAKAPAS ISLAND WMA

TRACT 42632 - Assumption Parish, Louisiana

All of the lands now or formerly constituting the beds and bottoms of all water bodies of every nature and description as to which title is vested in the State of Louisiana, together with all islands arising therein and other lands formed by accretion or by reliction, where allowed by law, excepting tax adjudicated lands, and not presently under mineral lease on May 9, 2012, situated in Assumption Parish, Louisiana, and more particularly described as follows: Beginning at a point having Coordinates of X = 2,061,713.31 and Y = 452,160.00; thence South 5,124.45 feet to a point on the Northeastern boundary of State Lease No. 16625 having Coordinates of X = 2,061,713.31 and Y = 447,035.55; thence along the Northeast, North and Northwest boundary of said State Lease No. 16625 the following courses and distances: North 36 degrees 38 minutes 03 seconds West 1,949.56 feet to a corner having Coordinates of X = 2,060,550.00 and Y = 448,600.00, West 2,275.00 feet to a corner having Coordinates of X = 2,058,275.00 and Y = 448,600.00 and South 32 degrees 18 minutes 14 seconds West 4,069.92 feet to its Southwest corner, also being the Northwest corner of State Lease No. 16626 having Coordinates of X = 2,056,100.00 and Y = 445,160.00; thence South 32 degrees 14 minutes 44 seconds West 1,158.71 feet along the Northwest boundary of said State Lease No. 16626 to a point having Coordinates of X = 2,055,481.78 and Y = 444,180.00; thence West approximately 9,189 feet to a point on the East boundary of State Lease No. 346, as amended having a Coordinate of Y = 444,180.00; thence Northerly approximately 7,980 feet along the East boundary of said State Lease No. 346 to a point having a Coordinate of Y = 452,160.00; thence East approximately 15,414 feet to the point of beginning, **LESS AND EXCEPT** any portion of State Lease 346 that may fall within the above described tract, containing approximately **1,976 acres**, all as more particularly outlined on a plat on file in the Office of Mineral Resources, Department of Natural Resources. All bearings, distances and coordinates are based on Louisiana Coordinate System of 1927, (North or South Zone), where applicable.

NOTE: The above description of the Tract nominated for lease has been provided and corrected, where required, exclusively by the nomination party. Any mineral lease selected from this Tract and awarded by the Louisiana State Mineral and Energy Board shall be without warranty of any kind, either express, implied, or statutory, including, but not limited to, the implied warranties of merchantability and fitness for a particular purpose. Should the mineral lease awarded by the Louisiana State Mineral and Energy Board be subsequently modified, cancelled or abrogated due to the existence of conflicting leases, operating agreements, private claims or other future obligations or conditions which may affect all or any portion of the leased Tract, it shall not relieve the Lessee of the obligation to pay any bonus due thereon to the Louisiana State Mineral and Energy Board, nor shall the Louisiana State Mineral and Energy Board be obligated to refund any consideration paid by the Lessor prior to such modification, cancellation, or abrogation, including, but not limited to, bonuses, rentals and royalties.

NOTE: This lease shall be for a primary term of five (5) years.

Applicant: THEOPHILUS OIL, GAS & LAND SERVICES, LLC

Bidder	Cash Payment	Price/Acre	Rental	Oil	Gas	Other

Legend

12050056

Active_Leases

Counties

IMAGERY.DOQQ_2008_1M_CIR

0 3,000 Feet



ASSUMPTION PARISH

LAKE VERRET

P.O.B.

T13S - R12E

SL 346

SL 16625

SL 16626

TRACT 42633 - Assumption Parish, Louisiana

All of the lands now or formerly constituting the beds and bottoms of all water bodies of every nature and description as to which title is vested in the State of Louisiana, together with all islands arising therein and other lands formed by accretion or by reliction, where allowed by law, excepting tax adjudicated lands, and not presently under mineral lease on May 9, 2012, situated in Assumption Parish, Louisiana, and more particularly described as follows: Beginning at a point on the Northwest boundary of State Lease No. 16626 having Coordinates of X = 2,055,481.78 and Y = 444,180.00; thence along the boundary of said State Lease No. 16626 the following courses and distances: South 32 degrees 14 minutes 44 seconds West 2,636.65 feet to a corner having Coordinates of X = 2,054,075.00 and Y = 441,950.00, South 500.00 feet to a corner having Coordinates of X = 2,054,075.00 and Y = 441,450.00, East 4,000.00 feet to a corner having Coordinates of X = 2,058,075.00 and Y = 441,450.00, North 47 degrees 33 minutes 50 seconds East 4,742.36 feet to a corner having Coordinates of X = 2,061,575.00 and Y = 444,650.00 and North 510.00 feet to its Northeast corner located on the South boundary of State Lease No. 16625 having Coordinates of X = 2,061,575.00 and Y = 445,160.00; thence East 425.00 feet along the South boundary of said State Lease No. 16625 to its Southeast corner having Coordinates of X = 2,062,000.00 and Y = 445,160.00; thence South 980.00 feet to a point having Coordinates of X = 2,062,000.00 and Y = 444,180.00; thence West 286.69 feet to a point having Coordinates of X = 2,061,713.31 and Y = 444,180.00; thence South 7,920.00 feet to a point having Coordinates of X = 2,061,713.31 and Y = 436,260.00; thence West approximately 15,427 feet to a point located on the East boundary of State Lease No. 346, as amended having a Coordinate of Y = 436,260.00; thence Northerly approximately 7,920 feet along the East boundary of said State Lease No. 346 to a point having a Coordinate of Y = 444,180.00; thence East approximately 9,189 feet to the point of beginning, **LESS AND EXCEPT** any portion of State Lease 346 that may fall within the above described tract, containing approximately **2,417 acres**, all as more particularly outlined on a plat on file in the Office of Mineral Resources, Department of Natural Resources. All bearings, distances and coordinates are based on Louisiana Coordinate System of 1927, (North or South Zone), where applicable.

NOTE: The above description of the Tract nominated for lease has been provided and corrected, where required, exclusively by the nomination party. Any mineral lease selected from this Tract and awarded by the Louisiana State Mineral and Energy Board shall be without warranty of any kind, either express, implied, or statutory, including, but not limited to, the implied warranties of merchantability and fitness for a particular purpose. Should the mineral lease awarded by the Louisiana State Mineral and Energy Board be subsequently modified, cancelled or abrogated due to the existence of conflicting leases, operating agreements, private claims or other future obligations or conditions which may affect all or any portion of the leased Tract, it shall not relieve the Lessee of the obligation to pay any bonus due thereon to the Louisiana State Mineral and

Energy Board, nor shall the Louisiana State Mineral and Energy Board be obligated to refund any consideration paid by the Lessor prior to such modification, cancellation, or abrogation, including, but not limited to, bonuses, rentals and royalties.

NOTE: This lease shall be for a primary term of five (5) years.

Applicant: THEOPHILUS OIL, GAS & LAND SERVICES, LLC

Bidder	Cash Payment	Price/Acre	Rental	Oil	Gas	Other

Legend

- 12050059
- Active_Leases
- Counties

IMAGERY.DOQQ_2008_1M_CIR

T13S - R13E

SL 16625

SL 16626

ASSUMPTION PARISH

P.O.B.

LAKE VERRET

0 3,000 Feet

T13S - R12E

SL 346

TRACT 42634 - St. Martin Parish, Louisiana

All of the lands now or formerly constituting the beds and bottoms of all water bodies of every nature and description as to which title is vested in the State of Louisiana, together with all islands arising therein and other lands formed by accretion or by reliction, where allowed by law, excepting tax adjudicated lands, and not presently under mineral lease on May 9, 2012, situated in St. Martin Parish, Louisiana, and more particularly described as follows: Beginning at a point having Coordinates of X = 1,997,353.60 and Y = 444,180.00; thence East 16,256.06 feet to a point having Coordinates of X = 2,013,609.66 and Y = 444,180.00; thence South 15,840.00 feet to a point having Coordinates of X = 2,013,609.66 and Y = 428,340.00; thence Southerly approximately 1,845 feet to the Northeast corner of State Lease No. 711; thence Westerly approximately 13,835 feet along the North boundary or a projection thereof of the said State Lease No. 711 to a point of intersection with the Eastern boundary of the Attakapas Island Wildlife Management Area, thence Northwesterly along the Eastern boundary of the said Attakapas Island Wildlife Management Area to a point of intersection with a North/South line having a Coordinate of X = 1,997,353.60; thence Northerly approximately 12,079 feet to the point of beginning, **LESS AND EXCEPT** any portion of State Lease No. 711 that may lie within the above described tract and **LESS AND EXCEPT** any portion of the Attakapas Island Wildlife Management Area that may lie within the above described tract, (This lease includes only waterbottoms claimed and owned by the state and specifically excludes any land which the state may claim or own and to which the mineral rights are vested in the state), containing approximately **189 acres**, all as more particularly outlined on a plat on file in the Office of Mineral Resources, Department of Natural Resources. All bearings, distances and coordinates are based on Louisiana Coordinate System of 1927, (North or South Zone), where applicable.

NOTE: The above description of the Tract nominated for lease has been provided and corrected, where required, exclusively by the nomination party. Any mineral lease selected from this Tract and awarded by the Louisiana State Mineral and Energy Board shall be without warranty of any kind, either express, implied, or statutory, including, but not limited to, the implied warranties of merchantability and fitness for a particular purpose. Should the mineral lease awarded by the Louisiana State Mineral and Energy Board be subsequently modified, cancelled or abrogated due to the existence of conflicting leases, operating agreements, private claims or other future obligations or conditions which may affect all or any portion of the leased Tract, it shall not relieve the Lessee of the obligation to pay any bonus due thereon to the Louisiana State Mineral and Energy Board, nor shall the Louisiana State Mineral and Energy Board be obligated to refund any consideration paid by the Lessor prior to such modification, cancellation, or abrogation, including, but not limited to, bonuses, rentals and royalties.

NOTE: This tract is located entirely within the boundary of the Atchafalaya Basin Legal Area.

NOTE: This lease shall be for a primary term of five (5) years.

Applicant: THEOPHILUS OIL, GAS & LAND SERVICES, LLC

Bidder	Cash Payment	Price/Acre	Rental	Oil	Gas	Other

Legend

12050057

Wildlife

Active_Leases

IMAGERY.DOQQ_2008_1M_CIR

T14S - R12E

MYSTIC CREW BAYOU

T13S - R11E

ST MARTIN PARISH

LITTLE BAYOU LONG

0 2.800 Feet

P.O.B.

ATTAKAPAS ISLAND WMA

SIX MILE LAKE

TRACT 42635 - St. Martin Parish, Louisiana

All of the lands now or formerly constituting the beds and bottoms of all water bodies of every nature and description as to which title is vested in the State of Louisiana, together with all islands arising therein and other lands formed by accretion or by reliction, where allowed by law, excepting tax adjudicated lands, and not presently under mineral lease on May 9, 2012, situated in St. Martin Parish, Louisiana, and more particularly described as follows: Beginning at a point having Coordinates of X = 2,013,609.66 and Y = 444,180.00; thence East 16,302.66 feet to a point having Coordinates of X = 2,029,912.33 and Y = 444,180.00; thence South 1,610.34 feet to a point having Coordinates of X = 2,029,912.33 and Y = 442,569.66; thence South approximately 5,232 feet to a point on the North boundary of State Lease No. 346, as amended having a Coordinate of X = 2,029,912.33; thence along the North and West boundary of said State Lease No. 346 the following courses and distances: Westerly approximately 5,607 feet to a corner, Southerly approximately 5,302 feet to a corner, Westerly approximately 5,286 feet to a corner and Southerly approximately 3,556 feet to a point having a Coordinate of Y = 428,340.00; thence West approximately 5,518 feet to a point having Coordinates of X = 2,013,609.66 and Y = 428,340.00; thence North 15,840.00 feet to the point of beginning, containing approximately **43 acres**, all as more particularly outlined on a plat on file in the Office of Mineral Resources, Department of Natural Resources. All bearings, distances and coordinates are based on Louisiana Coordinate System of 1927, (North or South Zone), where applicable.

NOTE: The above description of the Tract nominated for lease has been provided and corrected, where required, exclusively by the nomination party. Any mineral lease selected from this Tract and awarded by the Louisiana State Mineral and Energy Board shall be without warranty of any kind, either express, implied, or statutory, including, but not limited to, the implied warranties of merchantability and fitness for a particular purpose. Should the mineral lease awarded by the Louisiana State Mineral and Energy Board be subsequently modified, cancelled or abrogated due to the existence of conflicting leases, operating agreements, private claims or other future obligations or conditions which may affect all or any portion of the leased Tract, it shall not relieve the Lessee of the obligation to pay any bonus due thereon to the Louisiana State Mineral and Energy Board, nor shall the Louisiana State Mineral and Energy Board be obligated to refund any consideration paid by the Lessor prior to such modification, cancellation, or abrogation, including, but not limited to, bonuses, rentals and royalties.

NOTE: This area is entirely within the boundary of the Atchafalaya Basin Legal area.

NOTE: This lease shall be for a primary term of five (5) years.

Applicant: THEOPHILUS OIL, GAS & LAND SERVICES, LLC

Bidder	Cash Payment	Price/Acre	Rental	Oil	Gas	Other

Legend

12050058

Active_Leases

IMAGERY.DOQQ_2008_1M_CIR

0 4,000 Feet

ST MARTIN PARISH

T13S - R12E

P.O.B.

MYSTIC CREW BAYOU

BIG FORK BAYOU

SL 346

BAYOU APRIL

T14S - R11E

TRACT 42636 - Assumption and St. Martin Parishes, Louisiana

All of the lands now or formerly constituting the beds and bottoms of all water bodies of every nature and description as to which title is vested in the State of Louisiana, together with all islands arising therein and other lands formed by accretion or by reliction, where allowed by law, excepting tax adjudicated lands, and not presently under mineral lease on May 9, 2012, situated in Assumption and St. Martin Parishes, Louisiana, and more particularly described as follows: Beginning at a point having Coordinates of X = 2,061,713.31 and Y = 436,260.00; thence South 7,920.00 feet to a point having Coordinates of X = 2,061,713.31 and Y = 428,340.00; thence West approximately 15,527 feet to a point on the East boundary of the Atchafalaya Basin having a Coordinate of Y = 428,340.00; thence Northerly along the East boundary of said Atchafalaya Basin to a point on the South boundary of said State Lease No. 346; thence along the boundary of said State Lease No. 346 the following courses: Easterly, Southeasterly, Northerly, Northwesterly, Easterly and Northerly along the boundary of said State Lease No. 346 to a point located on the East boundary of State Lease No. 346, as amended having a Coordinates of Y = 436,260.00; thence East approximately 15,427 feet to the point of beginning, **LESS AND EXCEPT** that portion, if any, of the above described tract that may lie inside of the boundary of the Atchafalaya Basin, and **LESS AND EXCEPT** any portion of State Lease 346 that may fall within the above described tract, and **LESS AND EXCEPT** any right, title, and interest in lands owned by and not under lease from the State of Louisiana, on behalf of the St. Martin and Assumption Parish School Boards, situated in Section 16, Township 14 South, Range 13 East, Assumption Parish, Louisiana, contained within the above described tract, containing approximately **2,023 acres**, all as more particularly outlined on a plat on file in the Office of Mineral Resources, Department of Natural Resources. All bearings, distances and coordinates are based on Louisiana Coordinate System of 1927, (North or South Zone), where applicable.

NOTE: The above description of the Tract nominated for lease has been provided and corrected, where required, exclusively by the nomination party. Any mineral lease selected from this Tract and awarded by the Louisiana State Mineral and Energy Board shall be without warranty of any kind, either express, implied, or statutory, including, but not limited to, the implied warranties of merchantability and fitness for a particular purpose. Should the mineral lease awarded by the Louisiana State Mineral and Energy Board be subsequently modified, cancelled or abrogated due to the existence of conflicting leases, operating agreements, private claims or other future obligations or conditions which may affect all or any portion of the leased Tract, it shall not relieve the Lessee of the obligation to pay any bonus due thereon to the Louisiana State Mineral and Energy Board, nor shall the Louisiana State Mineral and Energy Board be obligated to refund any consideration paid by the Lessor prior to such modification, cancellation, or abrogation, including, but not limited to, bonuses, rentals and royalties.

NOTE: This lease shall be for a primary term of five (5) years.

NOTE: The State of Louisiana does hereby reserve, and this lease shall be subject to, the imprescriptible right of surface use in the nature of a servitude in favor of the Department of Natural Resources, including its Offices and Commissions, for the sole purpose of implementing, constructing, servicing and maintaining approved coastal zone management and/or restoration projects. Utilization of any and all rights derived under this lease by the mineral lessee, its agents, successors or assigns, shall not interfere with nor hinder the reasonable surface use by the Department of Natural Resources, its Offices or Commissions, as herein above reserved.

Applicant: THEOPHILUS OIL, GAS & LAND SERVICES, LLC

Bidder	Cash Payment	Price/Acre	Rental	Oil	Gas	Other

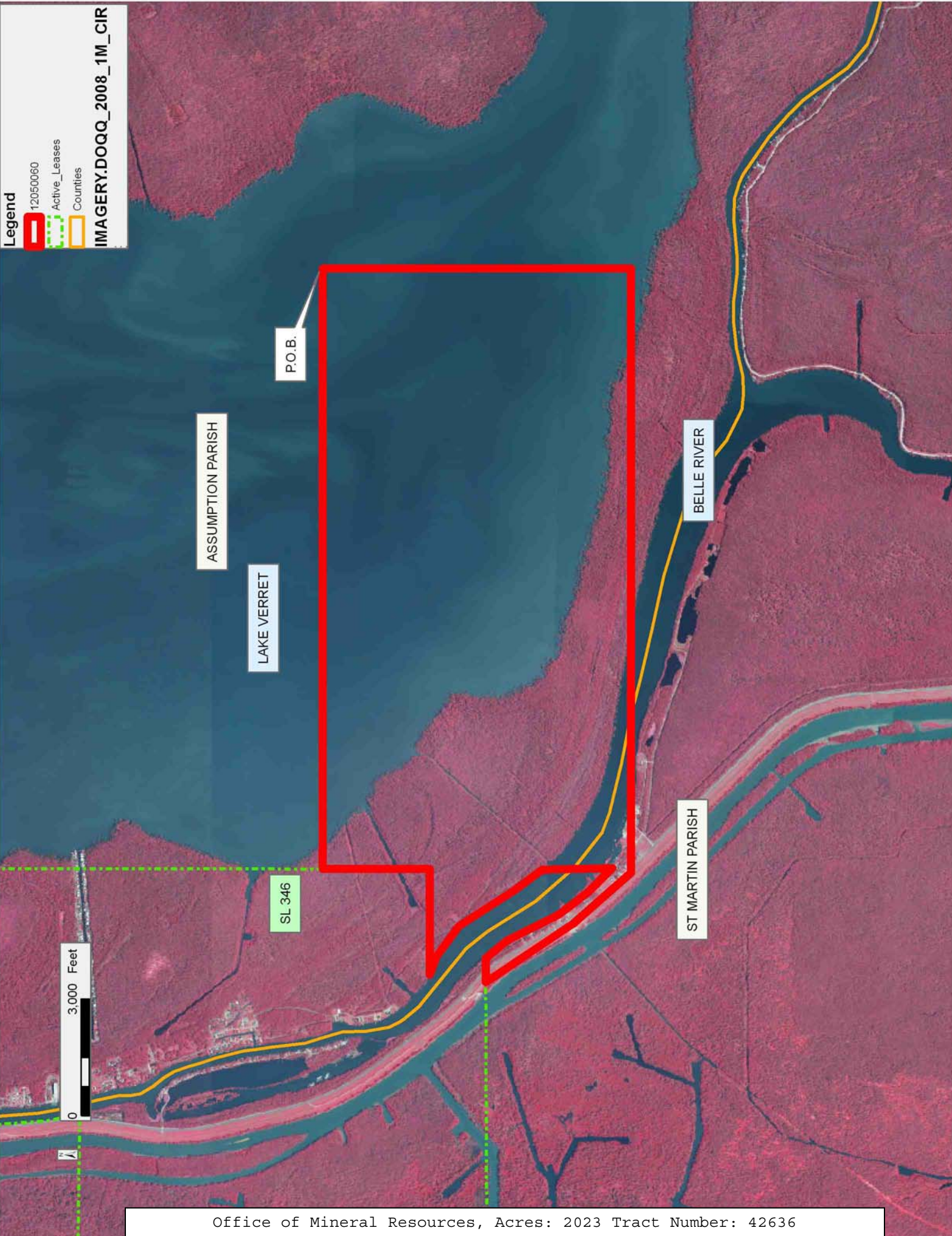
Legend

12050060

Active_Leases

Counties

IMAGERY.DOQQ_2008_1M_CIR



TRACT 42637 - Cameron Parish, Louisiana

All of the lands now or formerly constituting the beds and bottoms of all water bodies of every nature and description the title of which vests in the State of Louisiana, together with all islands arising therein and other lands formed by accretion or by reliction, where allowed by law, excepting tax adjudicated lands, and not presently under mineral lease on May 9, 2012, situated in Cameron Parish, Louisiana, and more particularly described as follows: Beginning at a point on the West boundary of State Lease No. 19095 having Coordinates of X = 1,194,560.00 and Y = 439,586.00; thence West 4,968.93 feet to a point on the Texas-Louisiana boundary having Coordinates of X = 1,189,591.07 and Y = 439,586.00; thence along said Texas-Louisiana boundary the following courses: North 52 degrees 24 minutes 40 seconds East 465.58 feet to a point having Coordinates of X = 1,189,960.00 and Y = 439,870.00; North 62 degrees 17 minutes 00 seconds East 2,225.34 feet to a point having Coordinates of X = 1,191,930.00 and Y = 440,905.00; North 58 degrees 23 minutes 11 seconds East 3,100.04 feet to a point having Coordinates of X = 1,194,570.00 and Y = 442,530.00 and North 46 degrees 43 minutes 34 seconds East 2,523.76 feet to a point on the Southern boundary of State Lease No. 20297 having Coordinates of X = 1,196,407.51 and Y = 444,260.00; thence along the Southern boundary of said State Lease No. 20297 the following courses: East 922.49 feet to a point having Coordinates of X = 1,197,330.00 and Y = 444,260.00 and South 48 degrees 50 minutes 15 seconds East 1,952.59 feet to a point on the boundary of State Lease No. 19067 having Coordinates of X = 1,198,800.00 and Y = 442,974.81; thence along the boundary of said State Lease No. 19067 the following courses: South 76 degrees 05 minutes 08 seconds West 1,566.98 feet to a point having Coordinates of X = 1,197,279.00 and Y = 442,598.00 and South 1,628.00 feet to the Northernmost Northeast corner of State Lease No. 19095 having Coordinates of X = 1,197,279.00 and Y = 440,970.00; thence along the boundary of said State Lease No. 19095 the following courses: West 2,719.00 feet to its Northwest corner having Coordinates of X = 1,194,560.00 and Y = 440,970.00 and South 1,384.00 feet to the point of beginning, containing approximately **364.20 acres, LESS AND EXCEPT** that portion thereof, if any, located West of the boundary line between the States of Texas and Louisiana as determined by the report of the Special Master and adjudicated by the Supreme Court of the United States in litigation styled **Texas v. Louisiana, et al No. 36 Original**, or as otherwise approved by said court, all as more particularly outlined on a plat on file in the Office of Mineral Resources, Department of Natural Resources. All bearings, distances and coordinates are based on Louisiana Coordinate System of 1927, (North or South Zone), where applicable.

NOTE: The above description of the Tract nominated for lease has been provided and corrected, where required, exclusively by the nomination party. Any mineral lease selected from this Tract and awarded by the Louisiana State Mineral and Energy Board shall be without warranty of any kind, either express, implied, or statutory, including, but not limited to, the implied warranties of merchantability and fitness for a particular purpose. Should the mineral lease awarded by the Louisiana State Mineral

and Energy Board be subsequently modified, cancelled or abrogated due to the existence of conflicting leases, operating agreements, private claims or other future obligations or conditions which may affect all or any portion of the leased Tract, it shall not relieve the Lessee of the obligation to pay any bonus due thereon to the Louisiana State Mineral and Energy Board, nor shall the Louisiana State Mineral and Energy Board be obligated to refund any consideration paid by the Lessor prior to such modification, cancellation, or abrogation, including, but not limited to, bonuses, rentals and royalties.

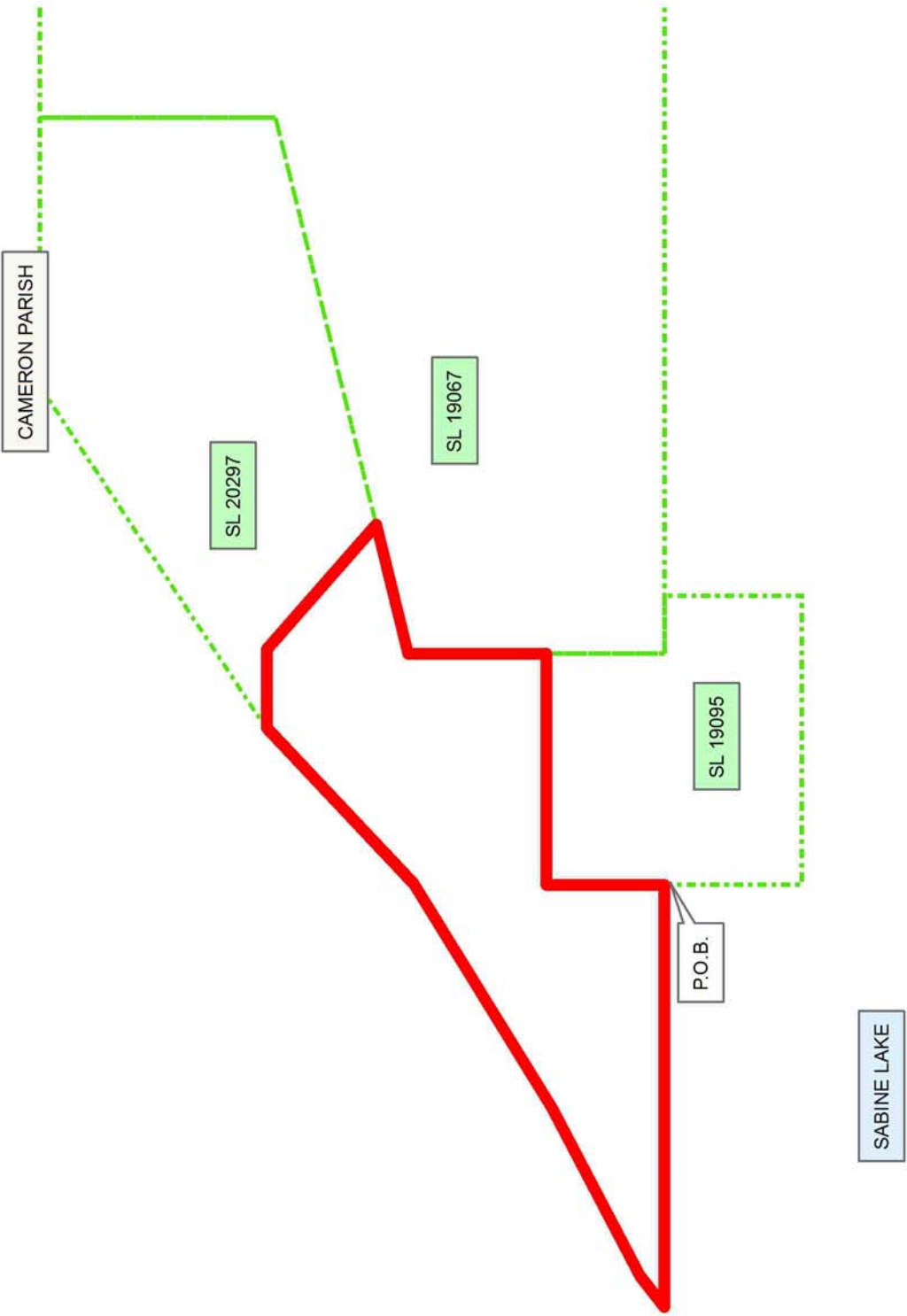
NOTE: The State of Louisiana does hereby reserve, and this lease shall be subject to, the imprescriptible right of surface use in the nature of a servitude in favor of the Department of Natural Resources, including its Offices and Commissions, for the sole purpose of implementing, constructing, servicing and maintaining approved coastal zone management and/or restoration projects. Utilization of any and all rights derived under this lease by the mineral lessee, its agents, successors or assigns, shall not interfere with nor hinder the reasonable surface use by the Department of Natural Resources, its Offices or Commissions, as herein above reserved.

NOTE: This tract is located in an area designated by the Louisiana Legislature or the Wildlife and Fisheries Commission as a Public Oyster Seed Ground, Reservation, or area of Calcasieu or Sabine Lake. Proposed projects occurring in these areas will be evaluated on a case by case basis by Louisiana Department of Wildlife & Fisheries. Modifications to proposed project features including, but not limited to, access routes, well sites, flowlines, and appurtenant structures maybe required by the Louisiana Department of Wildlife and Fisheries. In addition, compensatory mitigation will be required to offset unavoidable habitat impacts.

Applicant: AMEX RESOURCES, INC.

Bidder	Cash Payment	Price/Acre	Rental	Oil	Gas	Other

Legend
12050022
Active_Leases



TRACT 42638 - St. Martin Parish, Louisiana

The State Mineral and Energy Board acting on behalf of the St. Martin Parish and Assumption Parish School Boards, pursuant to Resolution(s) adopted by that (those) body(ies) and in accordance with Louisiana Revised Statutes 30:121-136 and 151-156, as amended, and Article XIV, Section 16(A)(9) and (B) of the Louisiana Constitution of 1974, as same may be continued and promulgated in proper statutory form and, further, amended from time to time, advertises the lands not under mineral lease on May 9, 2012, excluding the beds and bottoms of all navigable water bodies located within the following: All or a portion of Section 16, Township 14 South, Range 12 East in St. Martin Parish, Louisiana, containing approximately **650.52 acres**, all as more particularly outlined on a plat on file in the Office of Mineral Resources, Department of Natural Resources. All bearings, distances and coordinates are based on Louisiana Coordinate System of 1927, (North or South Zone).

NOTE: The above description of the Tract nominated for lease has been provided and corrected, where required, exclusively by the nomination party. Any mineral lease selected from this Tract and awarded by the Louisiana State Mineral and Energy Board shall be without warranty of any kind, either express, implied, or statutory, including, but not limited to, the implied warranties of merchantability and fitness for a particular purpose. Should the mineral lease awarded by the Louisiana State Mineral and Energy Board be subsequently modified, cancelled or abrogated due to the existence of conflicting leases, operating agreements, private claims or other future obligations or conditions which may affect all or any portion of the leased Tract, it shall not relieve the Lessee of the obligation to pay any bonus due thereon to the Louisiana State Mineral and Energy Board, nor shall the Louisiana State Mineral and Energy Board be obligated to refund any consideration paid by the Lessor prior to such modification, cancellation, or abrogation, including, but not limited to, bonuses, rentals and royalties.

NOTE: Lessors acknowledge that said Township 14 South, Range 12 East, is located 94.98% in the Parish of St. Martin and 5.02% in the Parish of Assumption; and Lessee is authorized and directed to pay any and all rentals and royalties which may accrue under the terms of this lease to Lessors separately and in the following proportions: St. Martin Parish School Board 94.98% and Assumption Parish School Board 5.02% and prospective bidders are hereby placed on notice that execution by the State Mineral Board of oil, gas and mineral lease on behalf of the St. Martin Parish School Board and the Assumption Parish School Board on the above described portion of section shall not be construed as a waiver by the State Mineral Board of any rights that it may have to lease for and on behalf of the State of Louisiana any navigable water bottoms that might be included within said portion of said section.

NOTE: There shall be a minimum bonus of not less than \$200 per acre and a royalty payment of not less than 25%.

Applicant: PINNACLE LEASING, L.L.C.

Bidder	Cash Payment	Price/Acre	Rental	Oil	Gas	Other

Legend

12050037

IMAGERY.DRG24000

2,000 Feet

ST MARTIN PARISH

T14S - R12E

SEC 9

SEC 15

SEC 16

SEC 21

16

SEC 17

TRACT 42639 - - Assumption Parish, Louisiana

The State Mineral and Energy Board acting on behalf of the Assumption Parish and St. Martin Parish School Boards, pursuant to Resolution(s) adopted by that (those) body(ies) and in accordance with Louisiana Revised Statutes 30:121-136 and 151-156, as amended, and Article XIV, Section 16(A)(9) and (B) of the Louisiana Constitution of 1974, as same may be continued and promulgated in proper statutory form and, further, amended from time to time, advertises the lands not under mineral lease on May 9, 2012, excluding the beds and bottoms of all navigable water bodies located within the following: All or a portion of Section 16, Township 14 South, Range 13 East in Assumption Parish, Louisiana, containing approximately **20.09 acres**, all as more particularly outlined on a plat on file in the Office of Mineral Resources, Department of Natural Resources. All bearings, distances and coordinates are based on Louisiana Coordinate System of 1927, (North or South Zone).

NOTE: The above description of the Tract nominated for lease has been provided and corrected, where required, exclusively by the nomination party. Any mineral lease selected from this Tract and awarded by the Louisiana State Mineral and Energy Board shall be without warranty of any kind, either express, implied, or statutory, including, but not limited to, the implied warranties of merchantability and fitness for a particular purpose. Should the mineral lease awarded by the Louisiana State Mineral and Energy Board be subsequently modified, cancelled or abrogated due to the existence of conflicting leases, operating agreements, private claims or other future obligations or conditions which may affect all or any portion of the leased Tract, it shall not relieve the Lessee of the obligation to pay any bonus due thereon to the Louisiana State Mineral and Energy Board, nor shall the Louisiana State Mineral and Energy Board be obligated to refund any consideration paid by the Lessor prior to such modification, cancellation, or abrogation, including, but not limited to, bonuses, rentals and royalties.

NOTE: Lessors acknowledge that said Township 14 South, Range 13 East, is located 52.46% in the Parish of St. Martin and 47.54% in the Parish of Assumption; and Lessee is authorized and directed to pay any and all rentals and royalties which may accrue under the terms of this lease to Lessors separately and in the following proportions: St. Martin Parish School Board 52.46% and Assumption Parish School Board 47.54% and prospective bidders are hereby placed on notice that execution by the State Mineral Board of oil, gas and mineral lease on behalf of the St. Martin Parish School Board and the Assumption Parish School Board on the above described portion of section shall not be construed as a waiver by the State Mineral Board of any rights that it may have to lease for and on behalf of the State of Louisiana any navigable water bottoms that might be included within said portion of said section.

NOTE: A minimum bonus of \$200 per acre and a minimum royalty of 25% shall be required.

Applicant: PINNACLE LEASING, L.L.C.

Bidder	Cash Payment	Price/Acre	Rental	Oil	Gas	Other

Legend

12050039

IMAGERY.DRG24000

0 1,000 Feet

ASSUMPTION PARISH

SEC 17

SEC 16

16

SEC 21

T14S - R13E

20

ASSUMPTION PARISH
ST MARTIN PARISH

BAYOU

21

BM 4
(1941)

TRACT 42640 - St. Martin Parish, Louisiana

All of the lands now or formerly constituting the beds and bottoms of all water bodies of every nature and description as to which title is vested in the State of Louisiana, together with all islands arising therein and other lands formed by accretion or by reliction, where allowed by law, excepting tax adjudicated lands, and not presently under mineral lease on May 9, 2012, situated in St. Martin Parish, Louisiana, and more particularly described as follows: Beginning at a point having Coordinates of X = 2,046,298.34 and Y = 412,500.00; thence West 16,386.01 feet to a point having Coordinates of X = 2,029,912.33 and Y = 412,500.00; thence North approximately 8,962 feet to a point on the South boundary of State Lease No. 346, as amended having a Coordinate of X = 2,029,912.33; thence along the South and East boundary of said State Lease No. 346 the following courses and distances: Easterly approximately 5,152 feet to a corner and Northerly approximately 6,911 feet to a point having a Coordinate of Y = 428,340.00; thence East approximately 11,148 feet to a point on the East boundary of the Atchafalaya Basin having a Coordinate of Y = 428,340.00; thence Southeasterly along the East boundary of said Atchafalaya Basin to the point of intersection with a North/South line having a Coordinate of X = 2,046,298.34; thence South approximately 15,719 feet to the point of beginning, **LESS AND EXCEPT** that portion, if any, of the above described tract that may lie outside of the boundary of the Atchafalaya Basin, and **LESS AND EXCEPT** any portion of State Lease 346 that may fall within the above described tract, (This tract includes only waterbottoms claimed and owned by the state and specifically excludes any land which the state may claim or own and to which the mineral rights are vested in the state), containing approximately **190 acres**, all as more particularly outlined on a plat on file in the Office of Mineral Resources, Department of Natural Resources. All bearings, distances and coordinates are based on Louisiana Coordinate System of 1927, (North or South Zone), where applicable.

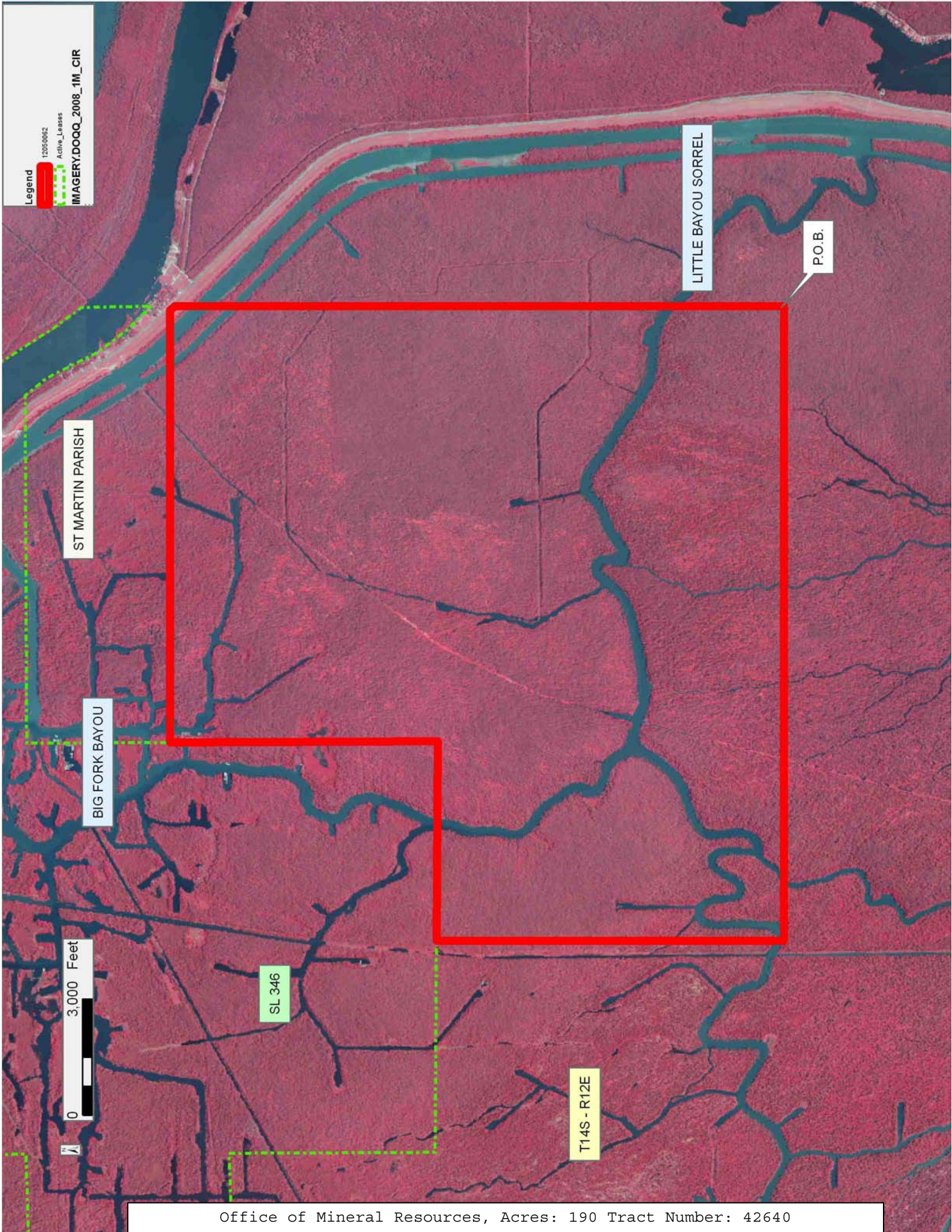
NOTE: The above description of the Tract nominated for lease has been provided and corrected, where required, exclusively by the nomination party. Any mineral lease selected from this Tract and awarded by the Louisiana State Mineral and Energy Board shall be without warranty of any kind, either express, implied, or statutory, including, but not limited to, the implied warranties of merchantability and fitness for a particular purpose. Should the mineral lease awarded by the Louisiana State Mineral and Energy Board be subsequently modified, cancelled or abrogated due to the existence of conflicting leases, operating agreements, private claims or other future obligations or conditions which may affect all or any portion of the leased Tract, it shall not relieve the Lessee of the obligation to pay any bonus due thereon to the Louisiana State Mineral and Energy Board, nor shall the Louisiana State Mineral and Energy Board be obligated to refund any consideration paid by the Lessor prior to such modification, cancellation, or abrogation, including, but not limited to, bonuses, rentals and royalties.

NOTE: This acreage is entirely within the boundary of the Atchafalaya Basin Legal area.

NOTE: This lease shall be for a primary term of five (5) years.

Applicant: THEOPHILUS OIL, GAS & LAND SERVICES, LLC

Bidder	Cash Payment	Price/Acre	Rental	Oil	Gas	Other



Legend

12050062
Active Leases

IMAGERY, DOQQ, 2008, 1M, CIR

ST MARTIN PARISH

BIG FORK BAYOU

LITTLE BAYOU SORREL

P.O.B.

SL 346

T14S - R12E

0 3,000 Feet