

TRACT 42641 - Assumption and St. Martin Parishes, Louisiana

All of the lands now or formerly constituting the beds and bottoms of all water bodies of every nature and description as to which title is vested in the State of Louisiana, together with all islands arising therein and other lands formed by accretion or by reliction, where allowed by law, excepting tax adjudicated lands, and not presently under mineral lease on May 9, 2012, situated in Assumption and St. Martin Parishes, Louisiana, and more particularly described as follows: Beginning at a point having Coordinates of X = 2,061,713.31 and Y = 428,340.00; thence South 15,840.00 feet to a point having Coordinates of X = 2,061,713.31 and Y = 412,500.00; thence West approximately 10,185 feet to a point on the East boundary of the Atchafalaya Basin having a Coordinate of Y = 412,500.00; thence Northerly and Northwesterly along the East boundary of the said Atchafalaya Basin to the point of intersection with a North/South line having a Coordinate of X = 2,046,298.34; thence North approximately 121 feet to a point having Coordinates of X = 2,046,298.34 and Y = 428,340.00; thence East 15,414.97 feet to the point of beginning, **LESS AND EXCEPT** that portion, if any, of the above described tract that may lie inside of the boundary of the Atchafalaya Basin, (This tract includes only waterbottoms claimed and owned by the state and specifically excludes any land which the state may claim or own and to which the mineral rights are vested in the state), containing approximately **495 acres**, all as more particularly outlined on a plat on file in the Office of Mineral Resources, Department of Natural Resources. All bearings, distances and coordinates are based on Louisiana Coordinate System of 1927, (North or South Zone), where applicable.

NOTE: The above description of the Tract nominated for lease has been provided and corrected, where required, exclusively by the nomination party. Any mineral lease selected from this Tract and awarded by the Louisiana State Mineral and Energy Board shall be without warranty of any kind, either express, implied, or statutory, including, but not limited to, the implied warranties of merchantability and fitness for a particular purpose. Should the mineral lease awarded by the Louisiana State Mineral and Energy Board be subsequently modified, cancelled or abrogated due to the existence of conflicting leases, operating agreements, private claims or other future obligations or conditions which may affect all or any portion of the leased Tract, it shall not relieve the Lessee of the obligation to pay any bonus due thereon to the Louisiana State Mineral and Energy Board, nor shall the Louisiana State Mineral and Energy Board be obligated to refund any consideration paid by the Lessor prior to such modification, cancellation, or abrogation, including, but not limited to, bonuses, rentals and royalties.

NOTE: This lease shall be for a primary term of five (5) years.

NOTE: The State of Louisiana does hereby reserve, and this lease shall be subject to, the imprescriptible right of surface use in the nature of a servitude in favor of the Department of Natural Resources, including its Offices and Commissions, for the sole purpose of implementing,

constructing, servicing and maintaining approved coastal zone management and/or restoration projects. Utilization of any and all rights derived under this lease by the mineral lessee, its agents, successors or assigns, shall not interfere with nor hinder the reasonable surface use by the Department of Natural Resources, its Offices or Commissions, as herein above reserved.

Applicant: THEOPHILUS OIL, GAS & LAND SERVICES, LLC

| Bidder | Cash Payment | Price/Acre | Rental | Oil | Gas | Other |
|--------|--------------|------------|--------|-----|-----|-------|
| | | | | | | |
| | | | | | | |
| | | | | | | |
| | | | | | | |

Legend

12050117

Counties

IMAGERY.DOQQ_2008_1M_CIR

ASSUMPTION PARISH

P.O.B.

BAYOU MAGAZILLE

BAYOU LONG

T14S - R12E

ST MARTIN PARISH

0 3,000 Feet

Legend

12050117

Counties

IMAGERY.DOQQ_2008_1M_CIR

ASSUMPTION PARISH

P.O.B.

BAYOU MAGAZILLE

BAYOU LONG

T14S - R12E

ST MARTIN PARISH

0 3,000 Feet

TRACT 42642 - St. Martin Parish, Louisiana

All of the lands now or formerly constituting the beds and bottoms of all water bodies of every nature and description as to which title is vested in the State of Louisiana, together with all islands arising therein and other lands formed by accretion or by reliction, where allowed by law, excepting tax adjudicated lands, and not presently under mineral lease on May 9, 2012, situated in St. Martin Parish, Louisiana, and more particularly described as follows: Beginning at a point having Coordinates of X = 2,013,609.66 and Y = 428,340.00; thence East approximately 5,518 feet to a point on the West boundary of State Lease No. 346, as amended having a Coordinate of Y = 428,340.00; thence along the West and South boundaries of said State Lease No. 346 the following courses and distances: Southerly approximately 1,725 feet to a corner, Easterly approximately 5,315 feet to a corner, Southerly approximately 5,318 feet to a corner and Easterly approximately 5,451 feet to a point having a Coordinate of X = 2,029,912.33; thence South approximately 8,962 feet to a point having Coordinates of X = 2,029,912.33 and Y = 412,500.00; thence West approximately 16,311 feet to a point on the East boundary of State Lease No. 711 having a Coordinate of Y = 412,500.00; thence Northerly approximately 13,996 feet along the East boundary of said State Lease No. 711 to its Northeast corner; thence Northerly approximately 1,845 feet to the point of beginning, (This tract includes only waterbottoms claimed and owned by the state and specifically excludes any land which the state may claim or own and to which the mineral rights are vested in the state), containing approximately **266 acres**, all as more particularly outlined on a plat on file in the Office of Mineral Resources, Department of Natural Resources. All bearings, distances and coordinates are based on Louisiana Coordinate System of 1927, (North or South Zone), where applicable.

NOTE: The above description of the Tract nominated for lease has been provided and corrected, where required, exclusively by the nomination party. Any mineral lease selected from this Tract and awarded by the Louisiana State Mineral and Energy Board shall be without warranty of any kind, either express, implied, or statutory, including, but not limited to, the implied warranties of merchantability and fitness for a particular purpose. Should the mineral lease awarded by the Louisiana State Mineral and Energy Board be subsequently modified, cancelled or abrogated due to the existence of conflicting leases, operating agreements, private claims or other future obligations or conditions which may affect all or any portion of the leased Tract, it shall not relieve the Lessee of the obligation to pay any bonus due thereon to the Louisiana State Mineral and Energy Board, nor shall the Louisiana State Mineral and Energy Board be obligated to refund any consideration paid by the Lessor prior to such modification, cancellation, or abrogation, including, but not limited to, bonuses, rentals and royalties.

NOTE: This acreage is entirely within the boundary of the Atchafalaya Basin Legal area.

NOTE: This lease shall be for a primary term of five (5) years.

Applicant: THEOPHILUS OIL, GAS & LAND SERVICES, LLC

| Bidder | Cash Payment | Price/Acre | Rental | Oil | Gas | Other |
|--------|--------------|------------|--------|-----|-----|-------|
| | | | | | | |
| | | | | | | |
| | | | | | | |
| | | | | | | |

Legend

12050061

Active_Leases

Counties

IMAGERY.DOQQ_2008_1M_CIR

ST MARTIN PARISH

T14S - R12E

BAYOU APRIL

P.O.B.

SL 346

SL 711

LITTLE BAYOU SORREL

0 3,000 Feet



TRACT 42643 - St. Martin Parish, Louisiana

All of the lands now or formerly constituting the beds and bottoms of all water bodies of every nature and description as to which title is vested in the State of Louisiana, together with all islands arising therein and other lands formed by accretion or by reliction, where allowed by law, excepting tax adjudicated lands, and not presently under mineral lease on May 9, 2012, situated in St. Martin Parish, Louisiana, and more particularly described as follows: Beginning at a point having Coordinates of X = 2,046,298.34 and Y = 412,500.00; thence North approximately 15,719 feet to a point on the East boundary of the Atchafalaya Basin having a Coordinate of X = 2,046,298.34; thence Southeasterly and Southerly along the East boundary of said Atchafalaya Basin to the point of intersection with a East/West line having a Coordinate of Y = 412,500.00; thence West approximately 5,230 feet to the point of beginning, **LESS AND EXCEPT** that portion, if any, of the above described tract that may lie outside of the boundary of the Atchafalaya Basin, containing approximately **29 acres**, all as more particularly outlined on a plat on file in the Office of Mineral Resources, Department of Natural Resources. All bearings, distances and coordinates are based on Louisiana Coordinate System of 1927, (North or South Zone), where applicable.

NOTE: The above description of the Tract nominated for lease has been provided and corrected, where required, exclusively by the nomination party. Any mineral lease selected from this Tract and awarded by the Louisiana State Mineral and Energy Board shall be without warranty of any kind, either express, implied, or statutory, including, but not limited to, the implied warranties of merchantability and fitness for a particular purpose. Should the mineral lease awarded by the Louisiana State Mineral and Energy Board be subsequently modified, cancelled or abrogated due to the existence of conflicting leases, operating agreements, private claims or other future obligations or conditions which may affect all or any portion of the leased Tract, it shall not relieve the Lessee of the obligation to pay any bonus due thereon to the Louisiana State Mineral and Energy Board, nor shall the Louisiana State Mineral and Energy Board be obligated to refund any consideration paid by the Lessor prior to such modification, cancellation, or abrogation, including, but not limited to, bonuses, rentals and royalties.

NOTE: This acreage is entirely within the boundary of the Atchafalaya Basin Legal area.

NOTE: This lease shall be for a primary term of five (5) years.

NOTE: The State of Louisiana does hereby reserve, and this lease shall be subject to, the imprescriptible right of surface use in the nature of a servitude in favor of the Department of Natural Resources, including its Offices and Commissions, for the sole purpose of implementing, constructing, servicing and maintaining approved coastal zone management and/or restoration projects. Utilization of any and all rights derived

under this lease by the mineral lessee, its agents, successors or assigns, shall not interfere with nor hinder the reasonable surface use by the Department of Natural Resources, its Offices or Commissions, as herein above reserved.

Applicant: THEOPHILUS OIL, GAS & LAND SERVICES, LLC

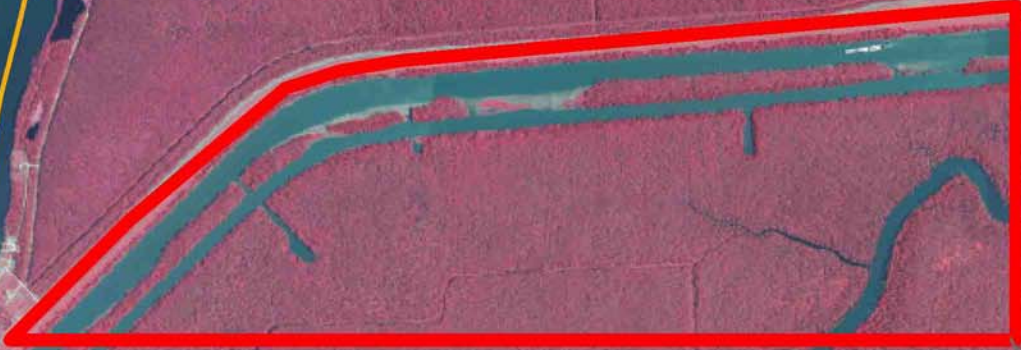
| Bidder | Cash Payment | Price/Acre | Rental | Oil | Gas | Other |
|--------|--------------|------------|--------|-----|-----|-------|
| | | | | | | |
| | | | | | | |
| | | | | | | |
| | | | | | | |

Legend
IMAGERY
IMAGERY/DOQQ_2008_1M_CIR

LAKE VERRET

ASSUMPTION PARISH

BAYOU LONG



P.O.B.

ST MARTIN PARISH

LITTLE BAYOU SORREL

0 3,000 Feet

TRACT 42644 - Cameron Parish, Louisiana

All of the lands now or formerly constituting the beds and bottoms of all water bodies of every nature and description the title of which vests in the State of Louisiana, together with all islands arising therein and other lands formed by accretion or by reliction, where allowed by law, excepting tax adjudicated lands, and not presently under mineral lease on May 9, 2012, situated in Cameron Parish, Louisiana, and more particularly described as follows: Beginning at a point having Coordinates of X = 1,192,355.00 and Y = 439,586.00; thence South 11,236.00 feet to a point having Coordinates of X = 1,192,355.00 and Y = 428,350.00; thence West 13,696.34 feet to a point on the Texas-Louisiana boundary having Coordinates of X = 1,178,658.66 and Y = 428,350.00; thence along said Texas-Louisiana boundary the following courses: North 21 degrees 23 minutes 27 seconds East 1,251.19 feet to a point having Coordinates of X = 1,179,115.00 and Y = 429,515.00; North 37 degrees 11 minutes 18 seconds East 2,159.03 feet to a point having Coordinates of X = 1,180,420.00 and Y = 431,235.00; North 44 degrees 11 minutes 15 seconds East 997.12 feet to a point having Coordinates of X = 1,181,115.00 and Y = 431,950.00; North 58 degrees 03 minutes 42 seconds East 907.36 feet to a point having Coordinates of X = 1,181,885.00 and Y = 432,430.00; North 43 degrees 06 minutes 18 seconds East 3,848.77 feet to a point having Coordinates of X = 1,184,515.00 and Y = 435,240.00; North 48 degrees 43 minutes 09 seconds East 5,395.98 feet to a point having Coordinates of X = 1,188,570.00 and Y = 438,800.00; North 52 degrees 24 minutes 42 seconds East 1,288.56 feet to a point having Coordinates of X = 1,189,591.07 and Y = 439,586.00; thence East 2,763.93 feet to the point of beginning, containing approximately **2,291.74 acres, LESS AND EXCEPT** that portion thereof, if any, located West of the boundary line between the States of Texas and Louisiana as determined by the report of the Special Master and adjudicated by the Supreme Court of the United States in litigation styled **Texas v. Louisiana, et al No. 36 Original**, or as otherwise approved by said court, all as more particularly outlined on a plat on file in the Office of Mineral Resources, Department of Natural Resources. All bearings, distances and coordinates are based on Louisiana Coordinate System of 1927, (North or South Zone), where applicable.

NOTE: The above description of the Tract nominated for lease has been provided and corrected, where required, exclusively by the nomination party. Any mineral lease selected from this Tract and awarded by the Louisiana State Mineral and Energy Board shall be without warranty of any kind, either express, implied, or statutory, including, but not limited to, the implied warranties of merchantability and fitness for a particular purpose. Should the mineral lease awarded by the Louisiana State Mineral and Energy Board be subsequently modified, cancelled or abrogated due to the existence of conflicting leases, operating agreements, private claims or other future obligations or conditions which may affect all or any portion of the leased Tract, it shall not relieve the Lessee of the obligation to pay any bonus due thereon to the Louisiana State Mineral and Energy Board, nor shall the Louisiana State Mineral and Energy Board be

obligated to refund any consideration paid by the Lessor prior to such modification, cancellation, or abrogation, including, but not limited to, bonuses, rentals and royalties.

NOTE: The State of Louisiana does hereby reserve, and this lease shall be subject to, the imprescriptible right of surface use in the nature of a servitude in favor of the Department of Natural Resources, including its Offices and Commissions, for the sole purpose of implementing, constructing, servicing and maintaining approved coastal zone management and/or restoration projects. Utilization of any and all rights derived under this lease by the mineral lessee, its agents, successors or assigns, shall not interfere with nor hinder the reasonable surface use by the Department of Natural Resources, its Offices or Commissions, as herein above reserved.

NOTE: This tract is located in an area designated by the Louisiana Legislature or the Wildlife and Fisheries Commission as a Public Oyster Seed Ground, Reservation, or area of Calcasieu or Sabine Lake. Proposed projects occurring in these areas will be evaluated on a case by case basis by Louisiana Department of Wildlife & Fisheries. Modifications to proposed project features including, but not limited to, access routes, well sites, flowlines, and appurtenant structures maybe required by the Louisiana Department of Wildlife and Fisheries. In addition, compensatory mitigation will be required to offset unavoidable habitat impacts.

Applicant: AMEX RESOURCES, INC.

| Bidder | Cash Payment | Price/Acre | Rental | Oil | Gas | Other |
|--------|--------------|------------|--------|-----|-----|-------|
| | | | | | | |
| | | | | | | |
| | | | | | | |
| | | | | | | |

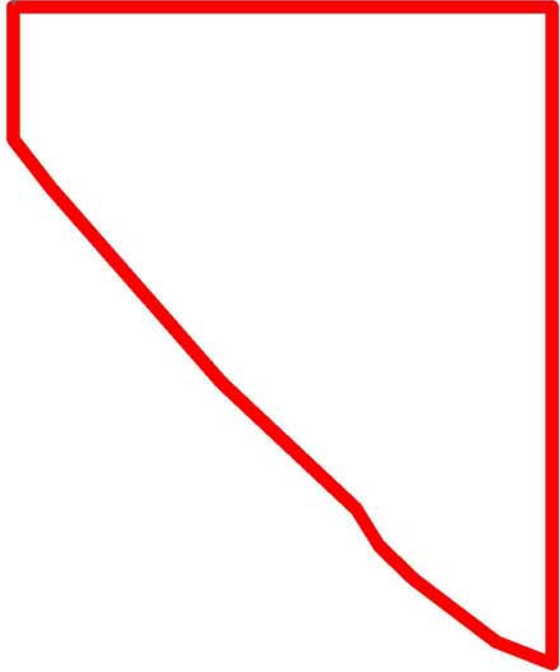


P.O.B.

CAMERON PARISH

SABINE LAKE

T14S - R15W



TRACT 42645 - Cameron Parish, Louisiana

All of the lands now or formerly constituting the beds and bottoms of all water bodies of every nature and description as to which title is vested in the State of Louisiana, together with all islands arising therein and other lands formed by accretion or by reliction, where allowed by law, excepting tax adjudicated lands, and not presently under mineral lease on May 9, 2012, situated in Cameron Parish, Louisiana, and more particularly described as follows: Beginning at a point having Coordinates of X = 1,192,355.00 and Y = 439,586.00; thence East 2,205.00 feet to a point on the West boundary of State Lease No. 19095 having Coordinates of X = 1,194,560.00 and Y = 439,586.00; thence South 1,616.00 feet to the Southwest corner of said State Lease No. 19095, also being on the boundary of State Lease No. 20298 having Coordinates of X = 1,194,560.00 and Y = 437,970.00; thence along the boundary of said State Lease No. 20298 the following courses: South 57 degrees 13 minutes 04 seconds West 35.18 feet to a point having Coordinates of X = 1,194,530.42 and Y = 437,950.95; South 02 degrees 21 minutes 26 seconds West 6,331.31 feet to a point having Coordinates of X = 1,194,270.00 and Y = 431,625.00; North 34 degrees 15 minutes 57 seconds East 6,624.84 feet to a point having Coordinates of X = 1,198,000.00 and Y = 437,100.00 and North 62 degrees 16 minutes 28 seconds East 3,343.93 feet to the Southwest corner of State Lease No. 20299 having Coordinates of X = 1,200,960.00 and Y = 438,655.72; thence South 10,305.72 feet to a point having Coordinates of X = 1,200,960.00 and Y = 428,350.00; thence West 8,605.00 feet to a point having Coordinates of X = 1,192,355.00 and Y = 428,350.00; thence North 11,236.00 feet to the point of beginning, containing approximately **1,686.03 acres**, all as more particularly outlined on a plat on file in the Office of Mineral Resources, Department of Natural Resources. All bearings, distances and coordinates are based on Louisiana Coordinate System of 1927, (North or South Zone), where applicable.

NOTE: The above description of the Tract nominated for lease has been provided and corrected, where required, exclusively by the nomination party. Any mineral lease selected from this Tract and awarded by the Louisiana State Mineral and Energy Board shall be without warranty of any kind, either express, implied, or statutory, including, but not limited to, the implied warranties of merchantability and fitness for a particular purpose. Should the mineral lease awarded by the Louisiana State Mineral and Energy Board be subsequently modified, cancelled or abrogated due to the existence of conflicting leases, operating agreements, private claims or other future obligations or conditions which may affect all or any portion of the leased Tract, it shall not relieve the Lessee of the obligation to pay any bonus due thereon to the Louisiana State Mineral and Energy Board, nor shall the Louisiana State Mineral and Energy Board be obligated to refund any consideration paid by the Lessor prior to such modification, cancellation, or abrogation, including, but not limited to, bonuses, rentals and royalties.

NOTE: The State of Louisiana does hereby reserve, and this lease shall be subject to, the imprescriptible right of surface use in the nature of a servitude in favor of the Department of Natural Resources, including its Offices and Commissions, for the sole purpose of implementing, constructing, servicing and maintaining approved coastal zone management and/or restoration projects. Utilization of any and all rights derived under this lease by the mineral lessee, its agents, successors or assigns, shall not interfere with nor hinder the reasonable surface use by the Department of Natural Resources, its Offices or Commissions, as herein above reserved.

NOTE: This tract is located in an area designated by the Louisiana Legislature or the Wildlife and Fisheries Commission as a Public Oyster Seed Ground, Reservation, or area of Calcasieu or Sabine Lake. Proposed projects occurring in these areas will be evaluated on a case by case basis by Louisiana Department of Wildlife & Fisheries. Modifications to proposed project features including, but not limited to, access routes, well sites, flowlines, and appurtenant structures maybe required by the Louisiana Department of Wildlife and Fisheries. In addition, compensatory mitigation will be required to offset unavoidable habitat impacts.

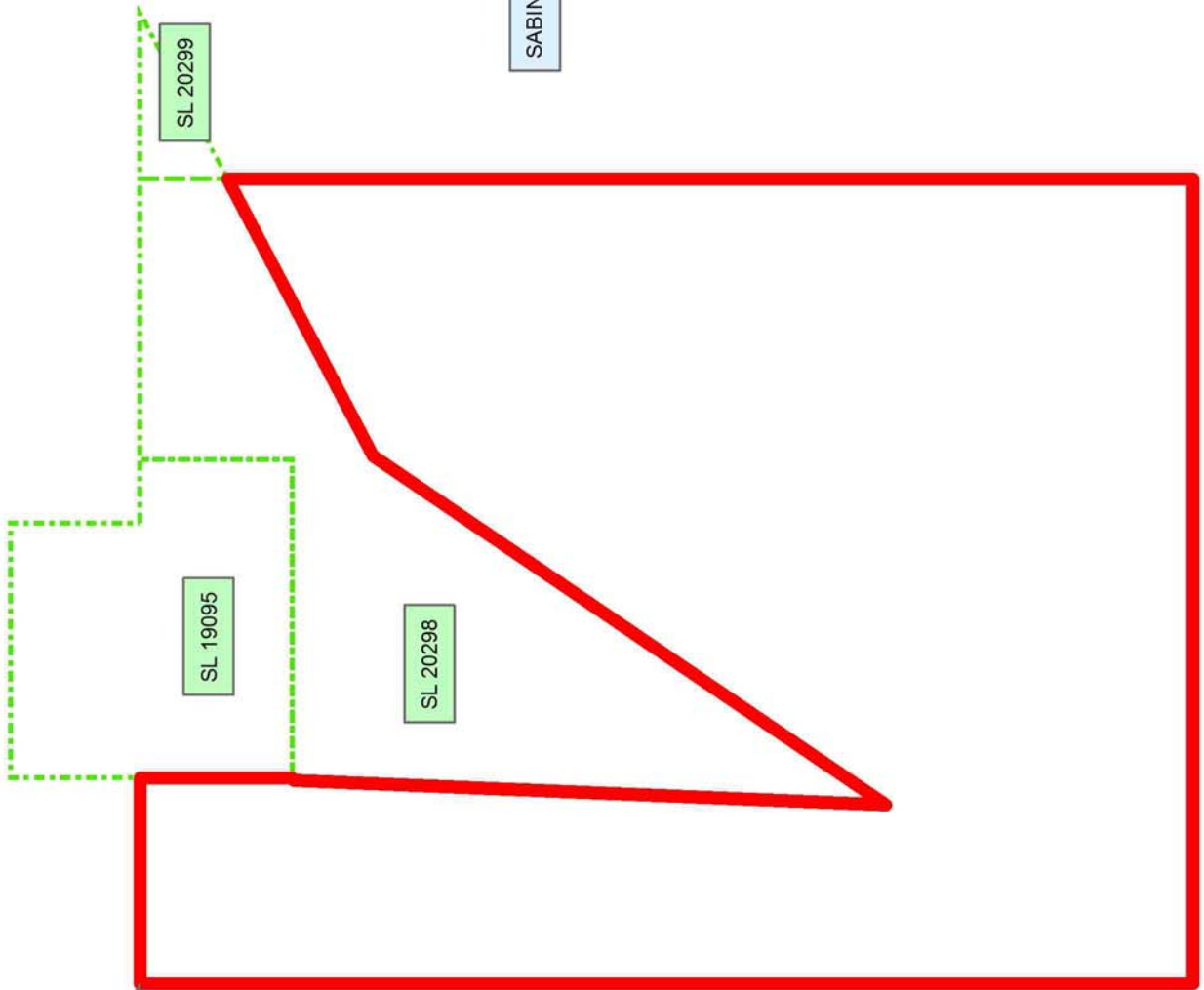
Applicant: AMEX RESOURCES, INC.

| Bidder | Cash Payment | Price/Acre | Rental | Oil | Gas | Other |
|--------|--------------|------------|--------|-----|-----|-------|
| | | | | | | |
| | | | | | | |
| | | | | | | |
| | | | | | | |

Legend
12050023
Active_Leases

CAMERON PARISH

SABINE LAKE



TRACT 42646 - Lafourche and St. Charles Parishes, Louisiana

All of the lands now or formerly constituting the beds and bottoms of all water bodies of every nature and description as to which title is vested in the State of Louisiana, together with all islands arising therein and other lands formed by accretion or by reliction, where allowed by law, excepting tax adjudicated lands, and not presently under mineral lease on May 9, 2012, situated in Lafourche and St. Charles Parishes, Louisiana, and more particularly described as follows: Beginning at a point having Coordinates of X = 2,312,957.62 and Y = 380,297.22; thence East 3,746.64 feet to a point on the west boundary of State Lease No. 19774 having Coordinates of X = 2,316,704.26 and Y = 380,297.22; thence South 2,128.16 feet to its Southwest corner and the Northwest corner of State Lease No. 20644 having Coordinates of X = 2,316,704.26 and Y = 378,169.06; thence along the boundary of said State Lease No. 20644 the following courses: South 2,359.06 feet to a point having Coordinates of X = 2,316,704.26 and Y = 375,810.00 and East 3,885.74 feet to its Southeast corner and the Northwest corner of State Lease No. 20627 having Coordinates of X = 2,320,590.00 and Y = 375,810.00; thence along the boundary of said State Lease No. 20627 the following courses: South 3,356.63 feet to a point having Coordinates of X = 2,320,590.00 and Y = 372,453.37 and East 660.00 feet to a point having Coordinates of X = 2,321,250.00 and Y = 372,453.37; thence South 2,583.37 feet to the Northeast corner of State Lease No. 20628 having Coordinates of X = 2,321,250.00 and Y = 369,870.00; thence along the boundary of said State Lease No. 20628 the following courses: West 4,300.00 feet to a point having Coordinates of X = 2,316,950.00 and Y = 369,870.00, South 3,500.00 feet to a point having Coordinates of X = 2,316,950.00 and Y = 366,370.00 and East 4,300.00 feet to its Southeast corner having Coordinates of X = 2,321,250.00 and Y = 366,370.00; thence South 4,552.78 feet to a point having Coordinates of X = 2,321,250.00 and Y = 361,817.22; thence West 8,292.38 feet to a point having Coordinates of X = 2,312,957.62 and Y = 361,817.22; thence North 18,480.00 feet to the point of beginning, **LESS AND EXCEPT** Section 16, Township 16 South, Range 21 East, containing 17.72 acres, nominated tract containing approximately **1,564 acres**, all as more particularly outlined on a plat on file in the Office of Mineral Resources, Department of Natural Resources. All bearings, distances and coordinates are based on Louisiana Coordinate System of 1927, (North or South Zone), where applicable.

NOTE: The above description of the Tract nominated for lease has been provided and corrected, where required, exclusively by the nomination party. Any mineral lease selected from this Tract and awarded by the Louisiana State Mineral and Energy Board shall be without warranty of any kind, either express, implied, or statutory, including, but not limited to, the implied warranties of merchantability and fitness for a particular purpose. Should the mineral lease awarded by the Louisiana State Mineral and Energy Board be subsequently modified, cancelled or abrogated due to the existence of conflicting leases, operating agreements, private claims or other future obligations or conditions which may affect all or any portion of the leased Tract, it shall not relieve the Lessee of the

obligation to pay any bonus due thereon to the Louisiana State Mineral and Energy Board, nor shall the Louisiana State Mineral and Energy Board be obligated to refund any consideration paid by the Lessor prior to such modification, cancellation, or abrogation, including, but not limited to, bonuses, rentals and royalties.

NOTE: The State of Louisiana does hereby reserve, and this lease shall be subject to, the imprescriptible right of surface use in the nature of a servitude in favor of the Department of Natural Resources, including its Offices and Commissions, for the sole purpose of implementing, constructing, servicing and maintaining approved coastal zone management and/or restoration projects. Utilization of any and all rights derived under this lease by the mineral lessee, its agents, successors or assigns, shall not interfere with nor hinder the reasonable surface use by the Department of Natural Resources, its Offices or Commissions, as herein above reserved.

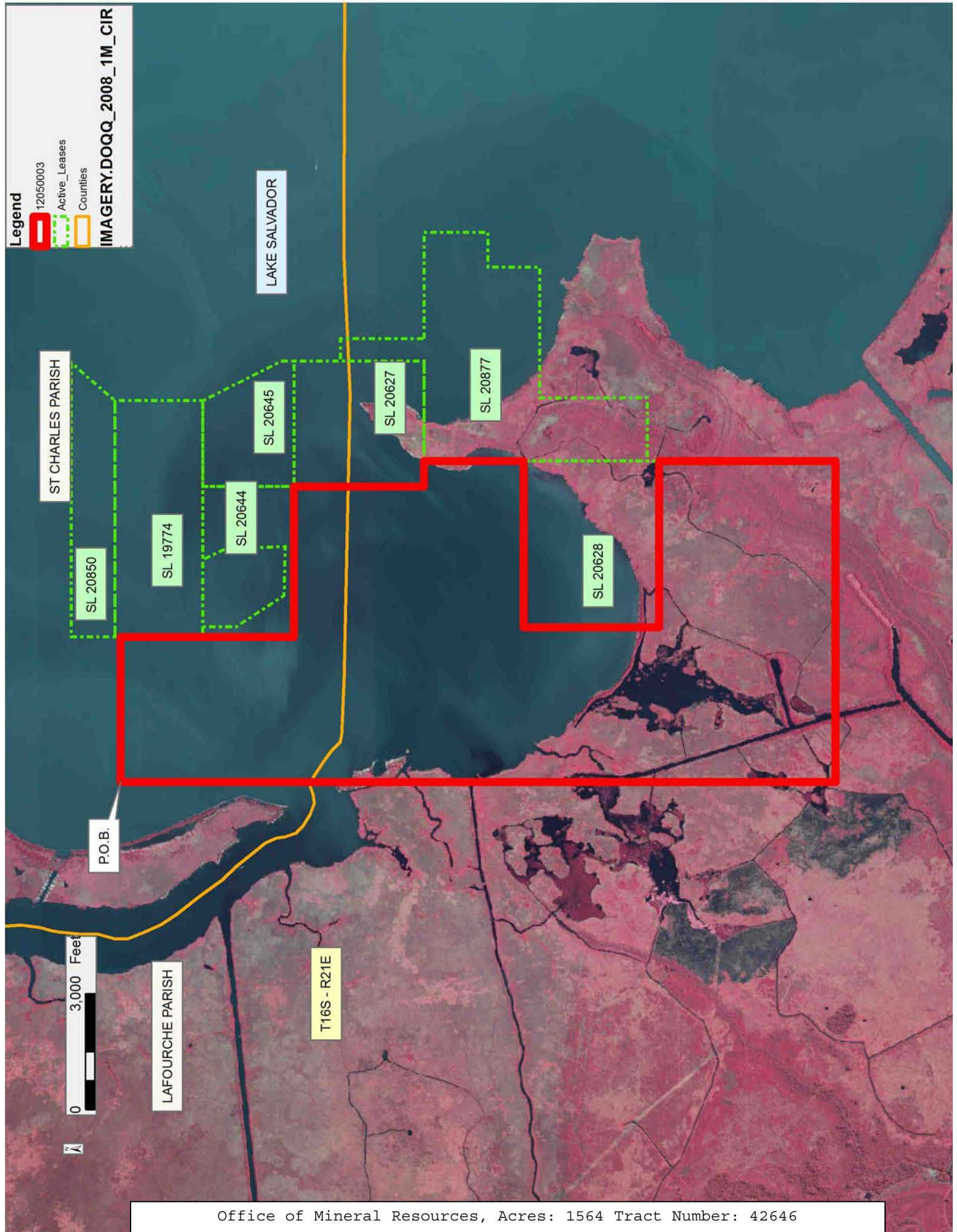
Applicant: STAFF OFFICE OF MINERAL RESOURCES

| Bidder | Cash Payment | Price/Acre | Rental | Oil | Gas | Other |
|--------|--------------|------------|--------|-----|-----|-------|
| | | | | | | |
| | | | | | | |
| | | | | | | |
| | | | | | | |

Legend

- 12050003
- Active_Leases
- Counties

IMAGERY.DOQQ_2008_1M_CIR



TRACT 42647 - Lafourche Parish, Louisiana

All of the lands now or formerly constituting the beds and bottoms of all water bodies of every nature and description as to which title is vested in the State of Louisiana, together with all islands arising therein and other lands formed by accretion or by reliction, where allowed by law, excepting tax adjudicated lands, and not presently under mineral lease on May 9, 2012, situated in Lafourche Parish, Louisiana, and more particularly described as follows: A certain tract or parcel of being all of the former landmass which comprised an island in Lake Salvador situated in Section 16, Township 16 South, Range 21 East, Lafourche or St. Charles Parish, Louisiana. Containing approximately **17.72 acres**, all as more particularly outlined on a plat on file in the Office of Mineral Resources, Department of Natural Resources. All bearings, distances and coordinates are based on Louisiana Coordinate System of 1927, (North or South Zone), where applicable.

NOTE: The above description of the Tract nominated for lease has been provided and corrected, where required, exclusively by the nomination party. Any mineral lease selected from this Tract and awarded by the Louisiana State Mineral and Energy Board shall be without warranty of any kind, either express, implied, or statutory, including, but not limited to, the implied warranties of merchantability and fitness for a particular purpose. Should the mineral lease awarded by the Louisiana State Mineral and Energy Board be subsequently modified, cancelled or abrogated due to the existence of conflicting leases, operating agreements, private claims or other future obligations or conditions which may affect all or any portion of the leased Tract, it shall not relieve the Lessee of the obligation to pay any bonus due thereon to the Louisiana State Mineral and Energy Board, nor shall the Louisiana State Mineral and Energy Board be obligated to refund any consideration paid by the Lessor prior to such modification, cancellation, or abrogation, including, but not limited to, bonuses, rentals and royalties.

NOTE: The revenues shall be divided in the following proportions: 95.31% to the Lafourche Parish School Board and 4.69% to the St. Charles Parish School Board.

| Bidder | Cash Payment | Price/Acre | Rental | Oil | Gas | Other |
|--------|--------------|------------|--------|-----|-----|-------|
| | | | | | | |
| | | | | | | |
| | | | | | | |
| | | | | | | |

Applicant: SALVADOR EXPLORATION



LAFOURCHE PARISH



LAKE SALVADOR

T16S - R21E

TRACT 42648 - Lafourche Parish, Louisiana

All of the lands now or formerly constituting the beds and bottoms of all water bodies of every nature and description as to which title is vested in the State of Louisiana, together with all islands arising therein and other lands formed by accretion or by reliction, where allowed by law, excepting tax adjudicated lands, and not presently under mineral lease on May 9, 2012, situated in Lafourche Parish, Louisiana, and more particularly described as follows: Beginning at a point having Coordinates of X = 2,234,489.18 and Y = 337,043.43; thence North 41 degrees 02 minutes 07 seconds East 10,404.01 feet to a point having Coordinates of X = 2,241,319.65 and Y = 344,891.24; thence South 53 degrees 09 minutes 00 seconds East 11,267.78 feet to a point having Coordinates of X = 2,250,336.24 and Y = 338,133.72; thence Southwesterly approximately 1,928 feet to the Northernmost point of State Lease No. 328, as amended; thence Southwesterly along the Northwestern boundary of said State Lease No. 328 to its westernmost point; thence Southwesterly approximately 918 feet to a point having Coordinates of X = 2,244,130.67 and Y = 329,817.57; thence North 53 degrees 09 minutes 00 seconds West 12,048.71 feet to the point of beginning, **LESS AND EXCEPT** in its entirety State Lease No. 9637, as amended, more particularly described as follows: Commencing from a point being the point of beginning of above described tract having Coordinates of X = 2,234,489.18 and Y = 337,043.43; thence North 82 degrees 40 minutes 02 seconds East 4,993.55 feet to a point being the point of beginning of said State Lease No. 9637 having Coordinates of X = 2,239,441.89 and Y = 337,680.76; thence around the boundary of said State Lease NO. 9637 the following: North 38 degrees 30 minutes 36 seconds East 1,653.92 feet, North 42 degrees 11 minutes 07 seconds East 916.43 feet, North 48 degrees 22 minutes 44 seconds East 1,217.05 feet, North 60 degrees 10 minutes 42 seconds East 471.40 feet, North 70 degrees 03 minutes 29 seconds East 420.00 feet, North 80 degrees 55 minutes 21 seconds East 454.71 feet, South 89 degrees 22 minutes 55 seconds East 421.74 feet, South 79 degrees 38 minutes 37 seconds East 457.92 feet, South 69 degrees 55 minutes 14 seconds East 448.91 feet, South 65 degrees 02 minutes 15 seconds East 433.36 feet, South 01 degrees 35 minutes 29 seconds East 706.89 feet, South 04 degrees 00 minutes 28 seconds West 498.76 feet, South 10 degrees 09 minutes 28 seconds West 493.25 feet, South 06 degrees 20 minutes 55 seconds West 400.54 feet, South 02 degrees 28 minutes 05 seconds East 445.42 feet, South 09 degrees 23 minutes 29 seconds East 464.71 feet, South 16 degrees 17 minutes 59 seconds East 301.97 feet, South 81 degrees 20 minutes 59 seconds West 226.86 feet, South 66 degrees 51 minutes 22 seconds West 363.02 feet, South 56 degrees 20 minutes 00 seconds West 453.95 feet, South 60 degrees 41 minutes 12 seconds West 370.93 feet, South 71 degrees 18 minutes 11 seconds West 329.01 feet, South 81 degrees 38 minutes 15 seconds West 334.23 feet, North 89 degrees 51 minutes 23 seconds West 379.17 feet, North 81 degrees 25 minutes 43 seconds West 360.17 feet, North 72 degrees 07 minutes 43 seconds West 1,016.91 feet, North 67 degrees 03 minutes 46 seconds West 970.67 feet, North 64 degrees 55 minutes 46 seconds West 762.67 feet, North 63 degrees 19 minutes 43 seconds West 378.50 feet back to the point of beginning of said State

Lease No. 9637 containing approximately 393.669 acres. And **LESS AND EXCEPT** any portion of State Lease No. 328, as amended, that may lie within the above described tract. Nominated tract containing approximately **1,462 acres**, all as more particularly outlined on a plat on file in the Office of Mineral Resources, Department of Natural Resources. All bearings, distances and coordinates are based on Louisiana Coordinate System of 1927, (North or South Zone), where applicable.

NOTE: The above description of the Tract nominated for lease has been provided and corrected, where required, exclusively by the nomination party. Any mineral lease selected from this Tract and awarded by the Louisiana State Mineral and Energy Board shall be without warranty of any kind, either express, implied, or statutory, including, but not limited to, the implied warranties of merchantability and fitness for a particular purpose. Should the mineral lease awarded by the Louisiana State Mineral and Energy Board be subsequently modified, cancelled or abrogated due to the existence of conflicting leases, operating agreements, private claims or other future obligations or conditions which may affect all or any portion of the leased Tract, it shall not relieve the Lessee of the obligation to pay any bonus due thereon to the Louisiana State Mineral and Energy Board, nor shall the Louisiana State Mineral and Energy Board be obligated to refund any consideration paid by the Lessor prior to such modification, cancellation, or abrogation, including, but not limited to, bonuses, rentals and royalties.

Applicant: PREVOST RESOURCES

| Bidder | Cash Payment | Price/Acre | Rental | Oil | Gas | Other |
|--------|--------------|------------|--------|-----|-----|-------|
| | | | | | | |
| | | | | | | |
| | | | | | | |
| | | | | | | |

Legend

12050024



Active_Leases

IMAGERY.DOQQ_2008_1M_CIR



LAFOURCHE PARISH

T17S - R19E

T17S - R18E

SL 9637

P.O.B.

LAKE LONG

SL 328

TRACT 42649 - Jefferson Parish, Louisiana

All of the lands now or formerly constituting the beds and bottoms of all water bodies of every nature and description as to which title is vested in the State of Louisiana, together with all islands arising therein and other lands formed by accretion or by reliction, where allowed by law, excepting tax adjudicated lands, and not presently under mineral lease on May 9, 2012, situated in Jefferson Parish, Louisiana, and more particularly described as follows: Beginning at a point having Coordinates of X = 2,401,070.00 and Y = 329,760.00; thence East 6,960.00 feet to a point having Coordinates of X = 2,408,030.00 and Y = 329,760.00; thence North 3,380.00 feet to a point having Coordinates of X = 2,408,030.00 and Y = 333,140.00; thence East 7,933.34 feet to a point having Coordinates of X = 2,415,963.34 and Y = 333,140.00; thence South 3,190.00 feet to the Northwest corner of State Lease No. 20775 having Coordinates of X = 2,415,963.34 and Y = 329,950.00; thence South 2,400.00 feet along the West boundary of said State Lease No. 20775 to its Southwest corner having Coordinates of X = 2,415,963.34 and Y = 327,550.00; thence South 2,860.21 feet to the Northeast corner of State Lease No. 20780 having Coordinates of X = 2,415,963.34 and Y = 324,689.79; thence West 2,500.00 feet along the North boundary of said State Lease No. 20780 to its Northwest corner having Coordinates of X = 2,413,463.34 and Y = 324,689.79; thence West 7,866.34 feet to a Northeast corner of State Lease No. 20778 having Coordinates of X = 2,405,597.00 and Y = 324,689.79; thence along the boundary of said State Lease No. 20778 the following courses: West 4,527.00 feet to a point having Coordinates of X = 2,401,070.00 and Y = 324,689.79 and North 3,110.21 feet to its Northernmost Northeast corner having Coordinates of X = 2,401,070.00 and Y = 327,800.00; thence North 1,960.00 feet to the point of beginning, containing approximately **139 acres, LESS AND EXCEPT** in their entirety the following State Leases from the above described tract:

State Lease No. 356, as amended.

State Lease No. 10439, as amended, being more fully described as follows: Beginning at a point having Coordinates of X = 2,408,341.08 and Y = 327,055.82; thence along the boundaries of said State Lease No. 10439 the following courses: North 86 degrees 17 minutes 30 seconds East 59.70 feet to a point having Coordinates of X = 2,408,400.66 and Y = 327,059.68; South 00 degrees 00 minutes 02 seconds East 597.52 feet to a point having Coordinates of X = 2,408,400.66 and Y = 326,462.16; South 13 degrees 12 minutes 29 seconds West 243.60 feet to a point having Coordinates of X = 2,408,345.00 and Y = 326,225.01; South 14 degrees 44 minutes 37 seconds West 432.23 feet to a point having Coordinates of X = 2,408,235.00 and Y = 325,807.01; South 16 degrees 55 minutes 39 seconds West 240.42 feet to a point having Coordinates of X = 2,408,165.00 and Y = 325,577.00; South 18 degrees 55 minutes 29 seconds West 148.00 feet to a point having Coordinates of X = 2,408,117.00 and Y = 325,437.00; South 45 degrees 56 minutes 21 seconds West 86.28 feet to a point having Coordinates of X = 2,408,055.00 and Y = 325,377.00; South 54 degrees 46 minutes 57 seconds

West 104.04 feet to a point having Coordinates of X = 2,407,970.00 and Y = 325,317.00; South 59 degrees 02 minutes 10 seconds West 110.79 feet to a point having Coordinates of X = 2,407,875.00 and Y = 325,260.00; South 68 degrees 55 minutes 52 seconds West 135.83 feet to a point having Coordinates of X = 2,407,748.25 and Y = 325,211.17; South 74 degrees 08 minutes 14 seconds West 315.26 feet to a point having Coordinates of X = 2,407,445.00 and Y = 325,125.00; South 78 degrees 07 minutes 51 seconds West 301.44 feet to a point having Coordinates of X = 2,407,150.00 and Y = 325,063.00; South 80 degrees 34 minutes 50 seconds West 219.97 feet to a point having Coordinates of X = 2,406,933.00 and Y = 325,027.00; South 82 degrees 57 minutes 43 seconds West 70.91 feet to a point having Coordinates of X = 2,406,862.62 and Y = 325,018.31; North 30 degrees 18 minutes 40 seconds East 500.05 feet to a point having Coordinates of X = 2,407,114.99 and Y = 325,450.01; North 28 degrees 29 minutes 44 seconds East 280.33 feet to a point having Coordinates of X = 2,407,248.74 and Y = 325,696.37; Northeasterly along an arc to the right having a radius of 1,223.25 feet and a long chord of North 47 degrees 17 minutes 24 seconds East 317.66 feet to a point having Coordinates of X = 2,407,482.15 and Y = 325,911.84; Northeasterly along an arc to the left having a radius of 1,768.42 feet and a long chord of North 36 degrees 03 minutes 17 seconds East 622.15 feet to a point having Coordinates of X = 2,407,848.32 and Y = 326,414.82; Northeasterly along an arc to the right having a radius of 964.84 feet and a long chord of North 32 degrees 42 minutes 17 seconds East 497.55 feet to a point having Coordinates of X = 2,408,117.15 and Y = 326,833.49 and North 45 degrees 12 minutes 19 seconds East 315.56 feet to the point of beginning.

State Lease No. 15092, as amended, being more fully described as follows: Beginning at a point having Coordinates of X = 2,408,767.58 and Y = 327,906.41; thence along the boundaries of said State Lease No. 15092, as amended, the following courses: North 52 degrees 48 minutes 02 seconds East 1,399.52 feet to a point having Coordinates of X = 2,409,882.35 and Y = 328,752.55; North 51 degrees 58 minutes 20 seconds East 814.46 feet to a point having Coordinates of X = 2,410,523.91 and Y = 329,254.29; North 49 degrees 55 minutes 00 seconds East 112.69 feet to a point having Coordinates of X = 2,410,610.13 and Y = 329,326.85; North 51 degrees 34 minutes 06 seconds East 756.42 feet to a point having Coordinates of X = 2,411,202.67 and Y = 329,797.03; North 52 degrees 12 minutes 04 seconds East 88.54 feet to a point having Coordinates of X = 2,411,272.63 and Y = 329,851.29; South 29 degrees 23 minutes 55 seconds West 117.65 feet to a point having Coordinates of X = 2,411,214.88 and Y = 329,748.79; South 34 degrees 16 minutes 20 seconds West 224.18 feet to a point having Coordinates of X = 2,411,088.64 and Y = 329,563.54; South 35 degrees 34 minutes 23 seconds West 188.31 feet to a point having Coordinates of X = 2,410,979.09 and Y = 329,410.37; South 38 degrees 55 minutes 45 seconds West 240.32 feet to a point having Coordinates of X = 2,410,828.08 and Y = 329,223.42; South 42 degrees 06 minutes 21 seconds West 229.73 feet to a point having Coordinates of X = 2,410,674.05 and Y = 329,052.98; South 44 degrees 04 minutes 24 seconds West 321.71 feet to a point having

Coordinates of X = 2,410,450.27 and Y = 328,821.85; South 46 degrees 44 minutes 51 seconds West 333.69 feet to a point having Coordinates of X = 2,410,207.23 and Y = 328,593.20; South 48 degrees 55 minutes 19 seconds West 524.57 feet to a point having Coordinates of X = 2,409,811.80 and Y = 328,248.51; South 52 degrees 28 minutes 12 seconds West 223.06 feet to a point having Coordinates of X = 2,409,634.91 and Y = 328,112.63; South 55 degrees 47 minutes 26 seconds West 468.63 feet to a point having Coordinates of X = 2,409,247.36 and Y = 327,849.16; South 58 degrees 24 minutes 58 seconds West 315.37 feet to a point having Coordinates of X = 2,408,978.70 and Y = 327,683.98; South 63 degrees 21 minutes 10 seconds West 321.17 feet to a point having Coordinates of X = 2,408,691.65 and Y = 327,539.94; North 19 degrees 48 minutes 01 seconds East 29.21 feet to a point having Coordinates of X = 2,408,701.54 and Y = 327,567.42; North 13 degrees 55 minutes 56 seconds East 188.86 feet to a point having Coordinates of X = 2,408,747.01 and Y = 327,750.73 and North 07 degrees 31 minutes 36 seconds East 157.04 feet to the point of beginning.

State Lease No. 16681, as amended; Northern Portion, Area "A", being more fully described as follows: Beginning at a point having Coordinates of X = 2,408,564.55 and Y = 327,270.69; thence North 28 degrees 31 minutes 50 seconds East 186.93 feet to a point having Coordinates of X = 2,408,653.83 and Y = 327,434.92; thence North 19 degrees 48 minutes 06 seconds East 111.62 feet to a point having Coordinates of X = 2,408,691.65 and Y = 327,539.94; thence North 63 degrees 21 minutes 10 seconds East 321.17 feet to a point having Coordinates of X = 2,408,978.70 and Y = 327,683.98; thence North 58 degrees 24 minutes 58 seconds East 315.37 feet to a point having Coordinates of X = 2,409,247.36 and Y = 327,849.16; thence North 55 degrees 47 minutes 26 seconds East 468.63 feet to a point having Coordinates of X = 2,409,634.91 and Y = 328,112.63; thence North 52 degrees 28 minutes 12 seconds East 223.06 feet to a point having Coordinates of X = 2,409,811.80 and Y = 328,248.51; thence North 48 degrees 55 minutes 19 seconds East 524.57 feet to a point having Coordinates of X = 2,410,207.23 and Y = 328,593.20; thence North 46 degrees 44 minutes 51 seconds East 333.69 feet to a point having Coordinates of X = 2,410,450.27 and Y = 328,821.85; thence North 44 degrees 04 minutes 24 seconds East 321.71 feet to a point having Coordinates of X = 2,410,674.05 and Y = 329,052.98; thence North 42 degrees 06 minutes 21 seconds East 229.73 feet to a point having Coordinates of X = 2,410,828.08 and Y = 329,223.42; thence North 38 degrees 55 minutes 44 seconds East 240.32 feet to a point having Coordinates of X = 2,410,979.09 and Y = 329,410.37; thence North 35 degrees 34 minutes 23 seconds East 188.31 feet to a point having Coordinates of X = 2,411,088.64 and Y = 329,563.54; thence North 34 degrees 16 minutes 20 seconds East 224.18 feet to a point having Coordinates of X = 2,411,214.88 and Y = 329,748.79; thence North 29 degrees 23 minutes 56 seconds East 117.65 feet to a point having Coordinates of X = 2,411,272.63 and Y = 329,851.29; thence North 52 degrees 12 minutes 04 seconds East 248.04 feet to a point having Coordinates of X = 2,411,468.62 and Y = 330,003.32; thence North 52

degrees 56 minutes 21 seconds East 356.93 feet to a point having
Coordinates of X = 2,411,753.45 and Y = 330,218.42; thence South 31
degrees 40 minutes 24 seconds West 491.54 feet to a point having
Coordinates of X = 2,411,495.36 and Y = 329,800.10; thence South 35
degrees 17 minutes 02 seconds West 240.56 feet to a point having
Coordinates of X = 2,411,356.40 and Y = 329,603.73; thence South 37
degrees 44 minutes 54 seconds West 466.82 feet to a point having
Coordinates of X = 2,411,070.62 and Y = 329,234.61; thence South 40
degrees 28 minutes 04 seconds West 321.99 feet to a point having
Coordinates of X = 2,410,861.64 and Y = 328,989.65; thence South 43
degrees 10 minutes 38 seconds West 355.33 feet to a point having
Coordinates of X = 2,410,618.50 and Y = 328,730.53; thence South 45
degrees 17 minutes 40 seconds West 391.88 feet to a point having
Coordinates of X = 2,410,339.98 and Y = 328,454.85; thence South 45
degrees 42 minutes 32 seconds West 165.40 feet to a point having
Coordinates of X = 2,410,221.59 and Y = 328,339.35; thence South 49
degrees 45 minutes 04 seconds West 217.25 feet to a point having
Coordinates of X = 2,410,055.77 and Y = 328,198.99; thence South 51
degrees 29 minutes 56 seconds West 222.50 feet to a point having
Coordinates of X = 2,409,881.64 and Y = 328,060.47; thence South 54
degrees 06 minutes 24 seconds West 300.92 feet to a point having
Coordinates of X = 2,409,637.87 and Y = 327,884.05; thence South 55
degrees 54 minutes 43 seconds West 228.79 feet to a point having
Coordinates of X = 2,409,448.39 and Y = 327,755.82; thence South 58
degrees 53 minutes 14 seconds West 314.43 feet to a point having
Coordinates of X = 2,409,179.19 and Y = 327,593.35; thence South 60
degrees 54 minutes 41 seconds West 338.78 feet to a point having
Coordinates of X = 2,408,883.14 and Y = 327,428.65; thence South 63
degrees 37 minutes 38 seconds West 355.60 feet to the point of beginning.

State Lease No. 16681, as amended; Southern Portion, Area "B", being more fully described as follows: Beginning at a point on the Southeast line of said 7800 RC SUA, having Coordinates of X = 2,407,966.69 and Y = 327,441.11; thence along the boundaries of said 7800 RC SUA the following courses: Southwesterly 413.06 feet along a curve to the left having a radius of 2,880.00 feet whose chord bears South 43 degrees 30 minutes 36 seconds West 412.70 feet to a point having Coordinates of X = 2,407,682.55 and Y = 327,141.80; Southwesterly 1,234.28 feet along a curve to the right having a radius of 2,785.00 feet whose chord bears South 50 degrees 26 minutes 13 seconds West 1,224.20 feet to a point having Coordinates of X = 2,406,738.79 and Y = 326,362.07; Northeasterly 280.75 feet along a curve to the right having a radius of 2,595.00 feet whose chord bears North 16 degrees 31 minutes 12 seconds East 280.61 feet to a point having Coordinates of X = 2,406,818.58 and Y = 326,631.10; Northeasterly 1,016.72 feet along a curve to the right having a radius of 1,860.00 feet whose chord bears North 26 degrees 18 minutes 39 seconds East 1,004.11 feet to a point having Coordinates of X = 2,407,263.65 and Y = 327,531.19 and Northeasterly 673.21 feet along a curve to the right having a radius of 2,795.00 whose chord bears North 54 degrees 51 minutes 00 seconds East

671.58 feet to a point on the Northwest line of said 7800 RC SUA having Coordinates of X = 2,407,812.76 and Y = 327,917.84; thence Southeasterly 500.96 feet along a curve to the left having a radius of 33,100.00 feet whose chord bears South 17 degrees 53 minutes 41 seconds East 500.96 feet to the point of beginning.

State Lease No. 20679, being more fully described as follows: Beginning at a point having Coordinates of X = 2,407,728.23 and Y = 326,810.24; thence North 48 degrees 06 minutes 16 seconds East 269.72 feet to a point having Coordinates of X = 2,407,929.00 and Y = 326,990.35; thence South 43 degrees 07 minutes 21 seconds West 25.94 feet to a point having Coordinates of X = 2,407,911.27 and Y = 326,971.42; thence South 23 degrees 42 minutes 39 seconds West 148.79 feet to a point having Coordinates of X = 2,407,851.44 and Y = 326,835.19; thence South 04 degrees 26 minutes 17 seconds West 58.40 feet to a point having Coordinates of X = 2,407,846.92 and Y = 326,776.96; thence South 39 degrees 34 minutes 14 seconds West 129.87 feet to a point having Coordinates of X = 2,407,764.19 and Y = 326,676.85; thence North 36 degrees 17 minutes 31 seconds West 41.52 feet to a point having Coordinates of X = 2,407,739.61 and Y = 326,710.32; thence North 06 degrees 29 minutes 56 seconds West 100.56 feet to the point of beginning.

State Lease No. 20680, being more fully described as follows: Beginning at a point having Coordinates of X = 2,407,528.72 and Y = 326,520.95; thence North 34 degrees 35 minutes 31 seconds East 117.14 feet to a point having Coordinates of X = 2,407,595.22 and Y = 326,617.38; thence South 46 degrees 58 minutes 40 seconds East 82.26 feet to a point having Coordinates of X = 2,407,655.36 and Y = 326,561.26; thence South 61 degrees 58 minutes 28 seconds East 15.69 feet to a point having Coordinates of X = 2,407,669.21 and Y = 326,553.88; thence South 37 degrees 08 minutes 41 seconds West 119.97 feet to a point having Coordinates of X = 2,407,596.77 and Y = 326,458.26; thence North 43 degrees 50 minutes 43 seconds West 13.09 feet to a point having Coordinates of X = 2,407,587.70 and Y = 326,467.70; thence North 47 degrees 55 minutes 35 seconds West 79.46 feet to the point of beginning, all as more particularly outlined on a plat on file in the Office of Mineral Resources, Department of Natural Resources. All bearings, distances and coordinates are based on Louisiana Coordinate System of 1927, (North or South Zone), where applicable.

NOTE: The above description of the Tract nominated for lease has been provided and corrected, where required, exclusively by the nomination party. Any mineral lease selected from this Tract and awarded by the Louisiana State Mineral and Energy Board shall be without warranty of any kind, either express, implied, or statutory, including, but not limited to, the implied warranties of merchantability and fitness for a particular purpose. Should the mineral lease awarded by the Louisiana State Mineral and Energy Board be subsequently modified, cancelled or abrogated due to the existence of conflicting leases, operating agreements, private claims

or other future obligations or conditions which may affect all or any portion of the leased Tract, it shall not relieve the Lessee of the obligation to pay any bonus due thereon to the Louisiana State Mineral and Energy Board, nor shall the Louisiana State Mineral and Energy Board be obligated to refund any consideration paid by the Lessor prior to such modification, cancellation, or abrogation, including, but not limited to, bonuses, rentals and royalties.

NOTE: The State of Louisiana does hereby reserve, and this lease shall be subject to, the imprescriptible right of surface use in the nature of a servitude in favor of the Department of Natural Resources, including its Offices and Commissions, for the sole purpose of implementing, constructing, servicing and maintaining approved coastal zone management and/or restoration projects. Utilization of any and all rights derived under this lease by the mineral lessee, its agents, successors or assigns, shall not interfere with nor hinder the reasonable surface use by the Department of Natural Resources, its Offices or Commissions, as herein above reserved.

Applicant: THEOPHILUS OIL, GAS & LAND SERVICES, LLC

| Bidder | Cash Payment | Price/Acre | Rental | Oil | Gas | Other |
|--------|--------------|------------|--------|-----|-----|-------|
| | | | | | | |
| | | | | | | |
| | | | | | | |
| | | | | | | |

JEFFERSON PARISH

SPOONBILL BAY

SL 20775

SL 20780

SL 356

SL 15092

SL 16681

SL 20679

SL 10439

0 2,000 Feet

SL 16681

SL 20680

THREE BAYOU BAY

P.O.B.

SL 20778

TRACT 42650 - Portion of Block 36, Eugene Island Area, Revised, St. Mary and Terrebonne Parishes, Louisiana

All of the lands now or formerly constituting the beds and bottoms of all water bodies of every nature and description as to which title is vested in the State of Louisiana, together with all islands arising therein and other lands formed by accretion or by reliction, where allowed by law, excepting tax adjudicated lands, and not presently under mineral lease on May 9, 2012, situated in St. Mary and Terrebonne Parishes, Louisiana, and more particularly described as follows: Beginning at the most East Northeast corner of Block 36, Eugene Island Area, Revised, said point also being the Northwest corner of Block 1, Ship Shoal Area having Coordinates of X = 2,000,000.00 and Y = 228,609.87, said point being located on the Louisiana Coastline, as decreed by the Supreme Court of the United States, as determined by a Special Master appointed therein, in litigation styled *United States v. State of Louisiana et al No. 9 Original*, in 1975; thence along the said Coastline the following courses and distances: Northwesterly on a straight line to a point having Coordinates of X = 1,998,568 and Y = 230,370, Northwesterly on a straight line to a point having Coordinates of X = 1,996,506 and Y = 233,983, Northwesterly on a straight line to a point having Coordinates of X = 1,995,220 and Y = 235,805, Northwesterly on a straight line to a point having Coordinates of X = 1,987,818 and Y = 240,892, Northwesterly on a straight line to a point having Coordinates of X = 1,987,371 and Y = 241,272 and Northeasterly on a straight line to a point on the South boundary of the Atchafalaya Delta Wildlife Management Area having Coordinates of X = 1,993,420 and Y = 241,930; thence Southeasterly and Easterly along the South boundary of said Atchafalaya Delta Wildlife Management Area to the point of intersection with a North/South line having a Coordinate of X = 2,005,851.00; thence South approximately 3,555 feet to a point having Coordinates of X = 2,005,851.00 and Y = 228,609.87; thence West 5,851.00 to the point of beginning, containing approximately **670 acres**, all as more particularly outlined on a plat on file in the Office of Mineral Resources, Department of Natural Resources. All bearings, distances and coordinates are based on Louisiana Coordinate System of 1927, (North or South Zone), where applicable.

NOTE: The above description of the Tract nominated for lease has been provided and corrected, where required, exclusively by the nomination party. Any mineral lease selected from this Tract and awarded by the Louisiana State Mineral and Energy Board shall be without warranty of any kind, either express, implied, or statutory, including, but not limited to, the implied warranties of merchantability and fitness for a particular purpose. Should the mineral lease awarded by the Louisiana State Mineral and Energy Board be subsequently modified, cancelled or abrogated due to the existence of conflicting leases, operating agreements, private claims or other future obligations or conditions which may affect all or any portion of the leased Tract, it shall not relieve the Lessee of the obligation to pay any bonus due thereon to the Louisiana State Mineral and Energy Board, nor shall the Louisiana State Mineral and Energy Board be

obligated to refund any consideration paid by the Lessor prior to such modification, cancellation, or abrogation, including, but not limited to, bonuses, rentals and royalties.

NOTE: The above described tract may be in the vicinity of existing shell reefs where drilling and dredging operations must be conducted in strict conformity with the regulations adopted by the Louisiana Department of Wildlife and Fisheries and/or the U.S. Corps of Engineers, U.S. Army.

NOTE: The State of Louisiana does hereby reserve, and this lease shall be subject to, the imprescriptible right of surface use in the nature of a servitude in favor of the Department of Natural Resources, including its Offices and Commissions, for the sole purpose of implementing, constructing, servicing and maintaining approved coastal zone management and/or restoration projects. Utilization of any and all rights derived under this lease by the mineral lessee, its agents, successors or assigns, shall not interfere with nor hinder the reasonable surface use by the Department of Natural Resources, its Offices or Commissions, as herein above reserved.

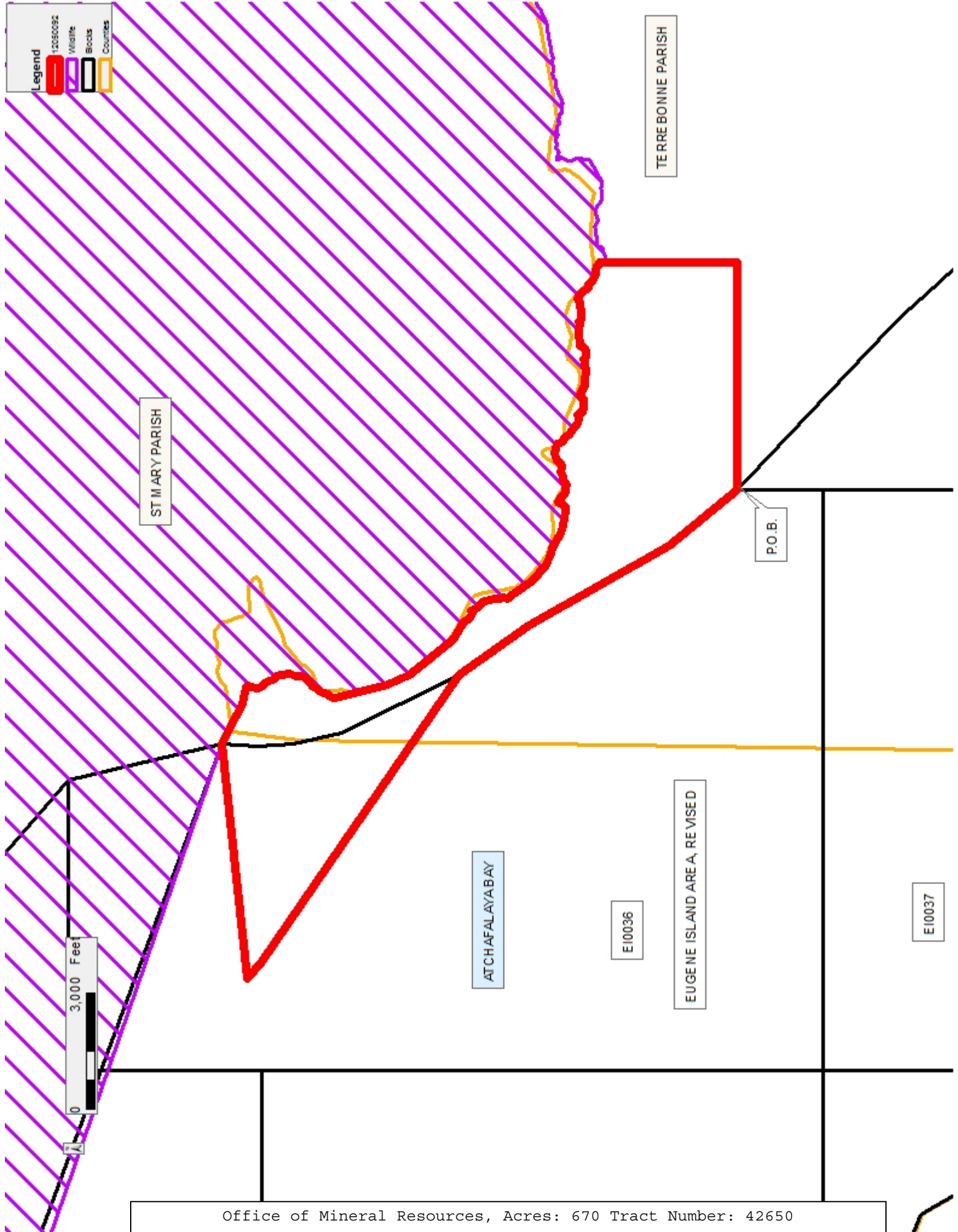
NOTE: This tract is located in an area designated by the Louisiana Legislature or the Wildlife and Fisheries Commission as a Public Oyster Seed Ground, Reservation, or area of Calcasieu or Sabine Lake. Proposed projects occurring in these areas will be evaluated on a case by case basis by Louisiana Department of Wildlife & Fisheries. Modifications to proposed project features including, but not limited to, access routes, well sites, flowlines, and appurtenant structures maybe required by the Louisiana Department of Wildlife and Fisheries. In addition, compensatory mitigation will be required to offset unavoidable habitat impacts.

Applicant: THEOPHILUS OIL, GAS & LAND SERVICES, LLC

| Bidder | Cash Payment | Price/Acre | Rental | Oil | Gas | Other |
|--------|--------------|------------|--------|-----|-----|-------|
| | | | | | | |
| | | | | | | |
| | | | | | | |
| | | | | | | |

Legend

- 12050052
- Wildlife
- Blocks
- Counties



Legend

- 12050052
- Wildlife
- Boats
- Counties

