

TRACT 42708 - Bossier Parish, Louisiana

All of the lands now or formerly constituting the beds and bottoms of all water bodies of every nature and description as to which title is vested in the State of Louisiana, together with all islands arising therein and other lands formed by accretion or by reliction, where allowed by law, excepting tax adjudicated lands, and not presently under mineral lease on June 13, 2012, situated in Bossier Parish, Louisiana, and more particularly described as follows: Beginning at a point being the Northeast corner of State Lease No. 19349, also being the Southeast corner of State Lease No. 20030 having Coordinates of X = 1,645,728.17 and Y = 652,364.67; thence North 5,019.57 feet along the Eastern boundary of said State Lease No. 20030 to a point having Coordinates of X = 1,645,728.17 and Y = 657,384.24; thence South 86 degrees 54 minutes 21 seconds East 5,789.52 feet to a point having Coordinates of X = 1,651,509.25 and Y = 657,071.74; thence South 02 degrees 05 minutes 35 seconds West 5,232.86 feet to a point having Coordinates of X = 1,651,318.12 and Y = 651,842.37; thence South 89 degrees 30 minutes 36 seconds East 5,334.38 feet to a point having Coordinates of X = 1,656,652.31 and Y = 651,796.75; thence South 00 degrees 20 minutes 44 seconds West 5,196.84 feet to a point on the North boundary of State Lease No. 20354, as amended having Coordinates of X = 1,656,620.98 and Y = 646,600.00; thence West 224.28 feet along the North boundary of said State Lease No. 20354 to its Northwest corner having Coordinates of X = 1,656,396.70 and Y = 646,600.00, said point also being the Northeast corner of State Lease No. 20881; thence West 10,668.53 feet along the North boundary of said State Lease No. 20881 to its Northwest corner, having Coordinates of X = 1,645,728.17 and Y = 646,600.00, said point also being on the Eastern boundary of said State Lease No. 19349; thence North 5,764.67 feet along the Eastern boundary of said State Lease No. 19349 to the point of beginning, containing approximately **19 acres**, all as more particularly outlined on a plat on file in the Office of Mineral Resources, Department of Natural Resources. All bearings, distances and coordinates are based on Louisiana Coordinate System of 1927, (North or South Zone), where applicable.

NOTE: The above description of the Tract nominated for lease has been provided and corrected, where required, exclusively by the nomination party. Any mineral lease selected from this Tract and awarded by the Louisiana State Mineral and Energy Board shall be without warranty of any kind, either express, implied, or statutory, including, but not limited to, the implied warranties of merchantability and fitness for a particular purpose. Should the mineral lease awarded by the Louisiana State Mineral and Energy Board be subsequently modified, cancelled or abrogated due to the existence of conflicting leases, operating agreements, private claims or other future obligations or conditions which may affect all or any portion of the leased Tract, it shall not relieve the Lessee of the obligation to pay any bonus due thereon to the Louisiana State Mineral and Energy Board, nor shall the Louisiana State Mineral and Energy Board be obligated to refund any consideration paid by the Lessor prior to such modification, cancellation, or abrogation, including, but not limited to, bonuses, rentals and royalties.

NOTE: The Office of Mineral Resources will require a minimum bonus of \$1500 per acre and a minimum royalty of 25%.

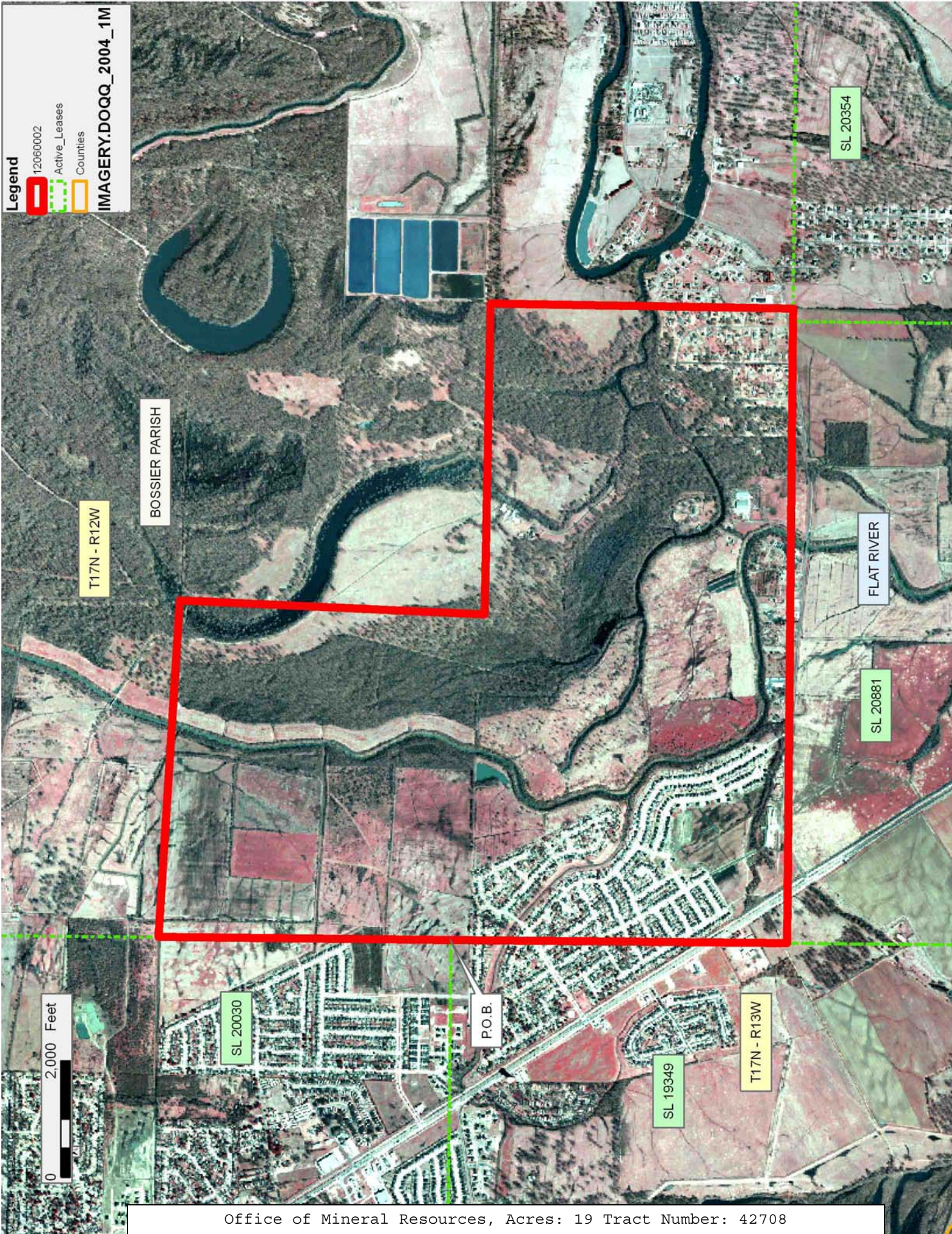
Applicant: STAFF OFFICE OF MINERAL RESOURCES

Bidder	Cash Payment	Price/ Acre	Rental	Oil	Gas	Other

Legend

- 12060002
- Active_Leases
- Counties

IMAGERY.DOQQ_2004_1M



TRACT 42709 - Bossier Parish, Louisiana

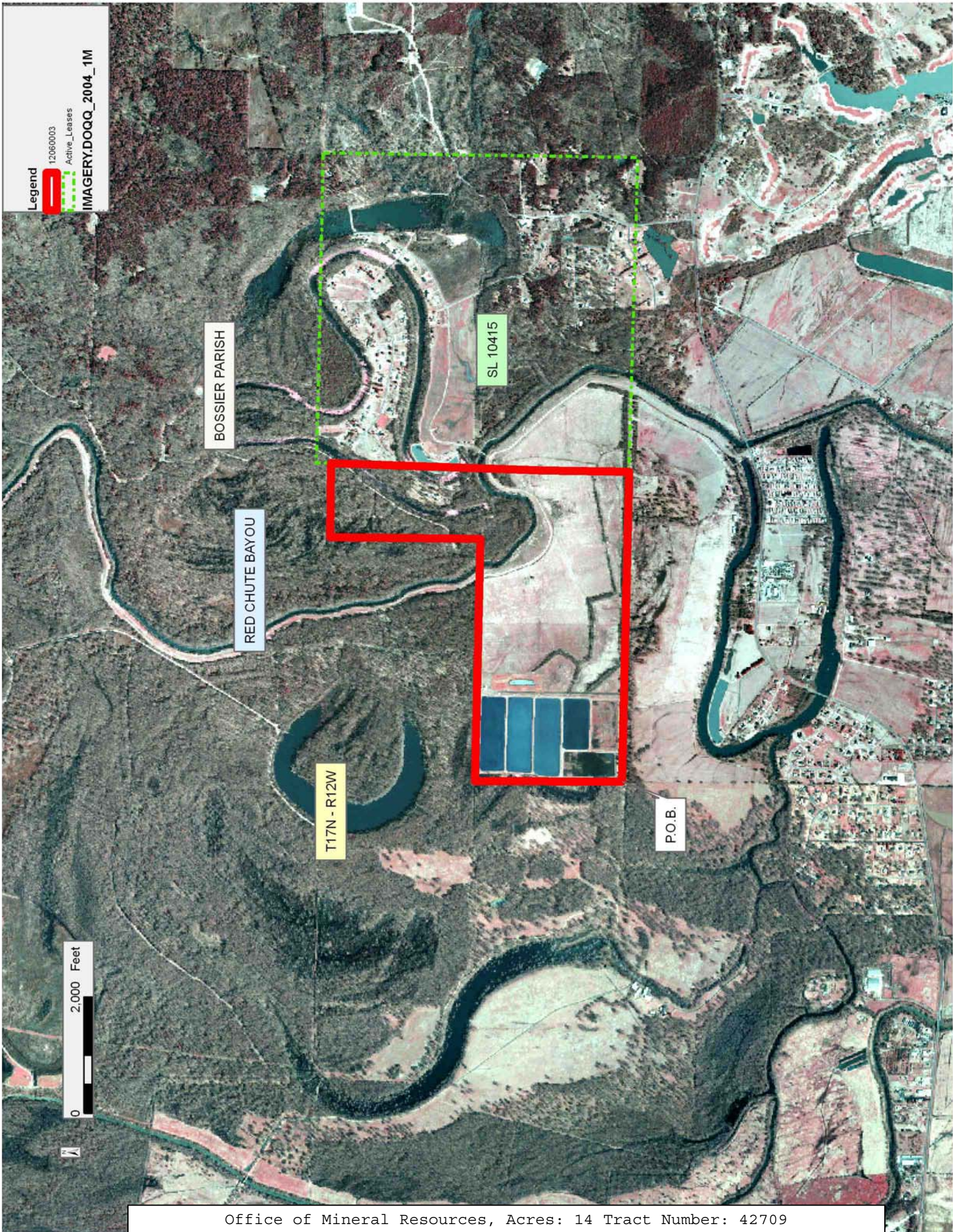
All of the lands now or formerly constituting the beds and bottoms of all water bodies of every nature and description as to which title is vested in the State of Louisiana, together with all islands arising therein and other lands formed by accretion or by reliction, where allowed by law, excepting tax adjudicated lands, and not presently under mineral lease on June 13, 2012, situated in Bossier Parish, Louisiana, and more particularly described as follows: Beginning at a point having Coordinates X = 1,656,652.35 and Y = 651,791.96; thence North 00 degrees 25 minutes 47 seconds West 2,521.39 feet to a point having Coordinates of X = 1,656,633.44 and Y = 654,313.28; thence South 89 degrees 20 minutes 11 seconds East 4,164.69 feet to a point having Coordinates of X = 1,660,797.85 and Y = 654,265.04; thence North 00 degrees 06 minutes 02 seconds East 2,576.62 feet to a point having Coordinates of X = 1,660,802.37 and Y = 656,841.65; thence East approximately 1,271 feet to a point on the West boundary of State Lease No. 10415, as amended; thence Southerly approximately 5,118 feet along the West boundary of said State Lease No. 10415 to its Southwestern corner; thence Westerly approximately 5,324 feet to the point of beginning, **LESS AND EXCEPT** that portion, if any, of State Lease No. 10415, as amended that may lie within the above described tract, and **LESS AND EXCEPT** any right, title, and interest in lands owned by and not under lease from the State of Louisiana, on behalf of the Bossier Parish School Board, situated in Section 16, Township 17 North, Range 12 West, Bossier Parish, Louisiana, contained within the above described tract, containing approximately **14 acres**, all as more particularly outlined on a plat on file in the Office of Mineral Resources, Department of Natural Resources. All bearings, distances and coordinates are based on Louisiana Coordinate System of 1927, (North or South Zone), where applicable.

NOTE: The above description of the Tract nominated for lease has been provided and corrected, where required, exclusively by the nomination party. Any mineral lease selected from this Tract and awarded by the Louisiana State Mineral and Energy Board shall be without warranty of any kind, either express, implied, or statutory, including, but not limited to, the implied warranties of merchantability and fitness for a particular purpose. Should the mineral lease awarded by the Louisiana State Mineral and Energy Board be subsequently modified, cancelled or abrogated due to the existence of conflicting leases, operating agreements, private claims or other future obligations or conditions which may affect all or any portion of the leased Tract, it shall not relieve the Lessee of the obligation to pay any bonus due thereon to the Louisiana State Mineral and Energy Board, nor shall the Louisiana State Mineral and Energy Board be obligated to refund any consideration paid by the Lessor prior to such modification, cancellation, or abrogation, including, but not limited to, bonuses, rentals and royalties.

NOTE: The Office of Mineral Resources will require a minimum bonus of \$1500 per acre and a minimum royalty of 25%.

Applicant: STAFF OFFICE OF MINERAL RESOURCES

Bidder	Cash Payment	Price/ Acre	Rental	Oil	Gas	Other



TRACT 42710 - Bossier Parish, Louisiana

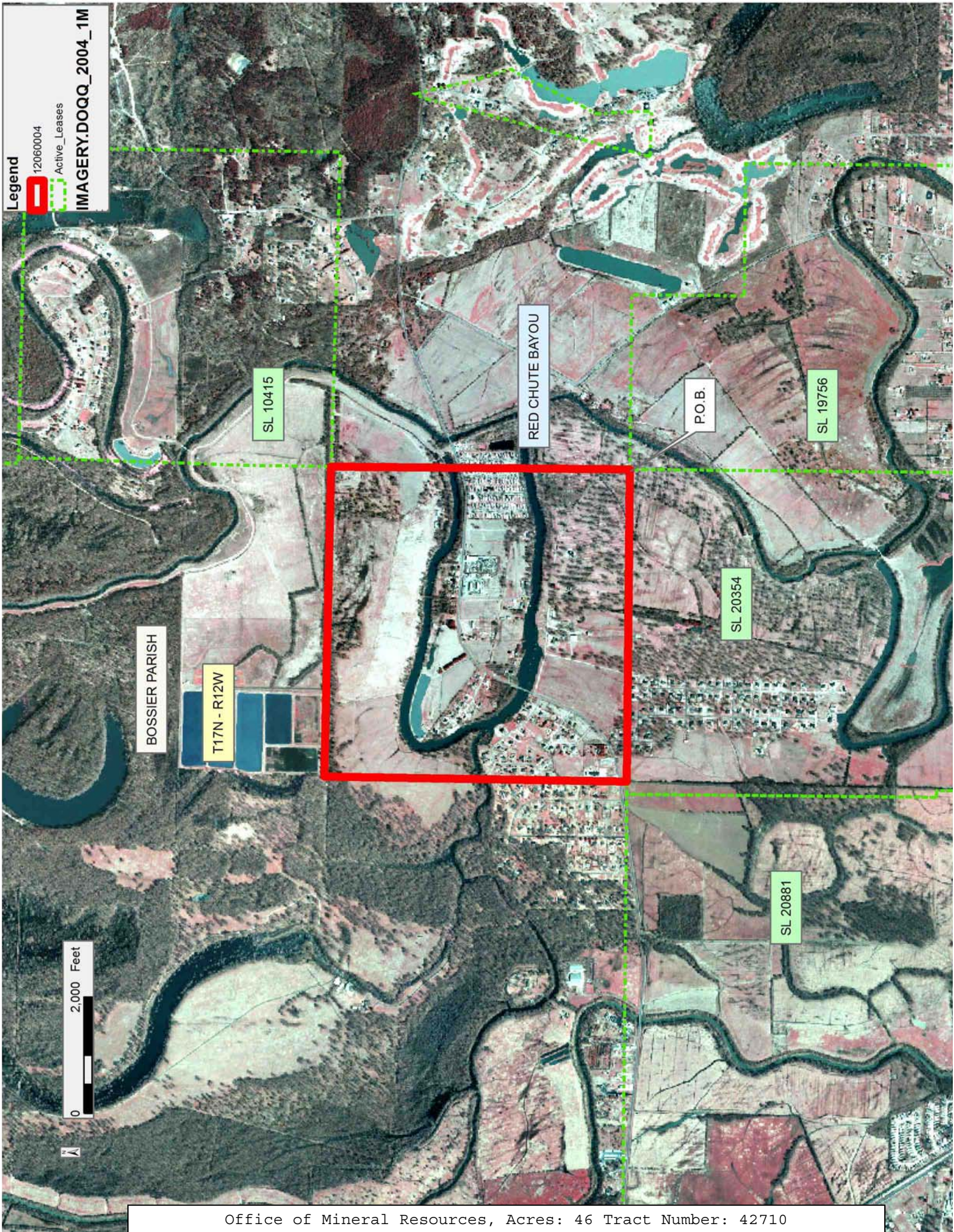
All of the lands now or formerly constituting the beds and bottoms of all water bodies of every nature and description as to which title is vested in the State of Louisiana, together with all islands arising therein and other lands formed by accretion or by reliction, where allowed by law, excepting tax adjudicated lands, and not presently under mineral lease on June 13, 2012, situated in Bossier Parish, Louisiana, and more particularly described as follows: Beginning at the Northeast corner of State Lease No. 20354, as amended having Coordinates of X = 1,661,976.70 and Y = 646,600.00, said point also being the Northwest corner of State Lease No. 19756, as amended; thence West 5,355.79 feet along the North boundary of said State Lease No. 20354 to a point having Coordinates of X = 1,656,620.91 and Y = 646,600.00; thence North 00 degrees 20 minutes 49 seconds East a distance of 5,192.06 feet to a point having Coordinates of X = 1,656,652.35 and Y = 651,791.96; thence Easterly approximately 5,325 feet to a point being the Southwest corner of State Lease No. 10415; thence Southerly approximately 5,125 feet to the point of beginning, **LESS AND EXCEPT** that portion, if any, of State Lease No. 10415, that may lie within the above described tract, containing approximately **46 acres**, all as more particularly outlined on a plat on file in the Office of Mineral Resources, Department of Natural Resources. All bearings, distances and coordinates are based on Louisiana Coordinate System of 1927, (North or South Zone), where applicable.

NOTE: The above description of the Tract nominated for lease has been provided and corrected, where required, exclusively by the nomination party. Any mineral lease selected from this Tract and awarded by the Louisiana State Mineral and Energy Board shall be without warranty of any kind, either express, implied, or statutory, including, but not limited to, the implied warranties of merchantability and fitness for a particular purpose. Should the mineral lease awarded by the Louisiana State Mineral and Energy Board be subsequently modified, cancelled or abrogated due to the existence of conflicting leases, operating agreements, private claims or other future obligations or conditions which may affect all or any portion of the leased Tract, it shall not relieve the Lessee of the obligation to pay any bonus due thereon to the Louisiana State Mineral and Energy Board, nor shall the Louisiana State Mineral and Energy Board be obligated to refund any consideration paid by the Lessor prior to such modification, cancellation, or abrogation, including, but not limited to, bonuses, rentals and royalties.

NOTE: The Office of Mineral Resources will require a minimum bonus of \$1500 per acre and a minimum royalty of 25%.

Applicant: STAFF OFFICE OF MINERAL RESOURCES

Bidder	Cash Payment	Price/ Acre	Rental	Oil	Gas	Other



TRACT 42711 - Bossier Parish, Louisiana

All lands, including lands now or formerly constituting the beds and bottoms of all water bodies of every nature and description, owned by and not presently under mineral lease as of June 13, 2012 from the State of Louisiana, situated in Bossier Parish, Louisiana, and being more fully described as follows: All of the West half of the Northeast quarter of Section 19, Township 15 North, Range 10 West, Bossier Parish, Louisiana, **LESS AND EXCEPT** that portion, if any, of the acreage of State Lease No. 19762, which lies within the above described tract, said tract being in the geographical boundary of the Loggy Bayou Wildlife Management Area, and containing approximately **82.106 acres**, all as more particularly outlined on a plat on file in the Office of Mineral Resources, Department of Natural Resources. All bearings, distances and coordinates are based on Louisiana Coordinate System of 1927, (North or South Zone), where applicable.

NOTE: The above description of the Tract nominated for lease has been provided and corrected, where required, exclusively by the nomination party. Any mineral lease selected from this Tract and awarded by the Louisiana State Mineral and Energy Board shall be without warranty of any kind, either express, implied, or statutory, including, but not limited to, the implied warranties of merchantability and fitness for a particular purpose. Should the mineral lease awarded by the Louisiana State Mineral and Energy Board be subsequently modified, cancelled or abrogated due to the existence of conflicting leases, operating agreements, private claims or other future obligations or conditions which may affect all or any portion of the leased Tract, it shall not relieve the Lessee of the obligation to pay any bonus due thereon to the Louisiana State Mineral and Energy Board, nor shall the Louisiana State Mineral and Energy Board be obligated to refund any consideration paid by the Lessor prior to such modification, cancellation, or abrogation, including, but not limited to, bonuses, rentals and royalties.

NOTE: The surface of these properties are owned by the Corps of Engineers and leased by the Louisiana Department of Wildlife and Fisheries, no surface activities will be allowed without approval from both the Corps of Engineers and the Louisiana Department of Wildlife and Fisheries.

NOTE: In the event that productive wells associated with this lease produce noise levels on the wildlife management area above 45 decibels, the operator shall conform to the Department's noise abatement requirement which allows a maximum level of 45 decibels at 350ft from the noise source.

NOTE: Contact person for the Department will be Mike Windham at (504) 284-5268.

NOTE: The Department of Wildlife & Fisheries will require a minimum bonus of \$10000 per acre and a minimum royalty of 25%.

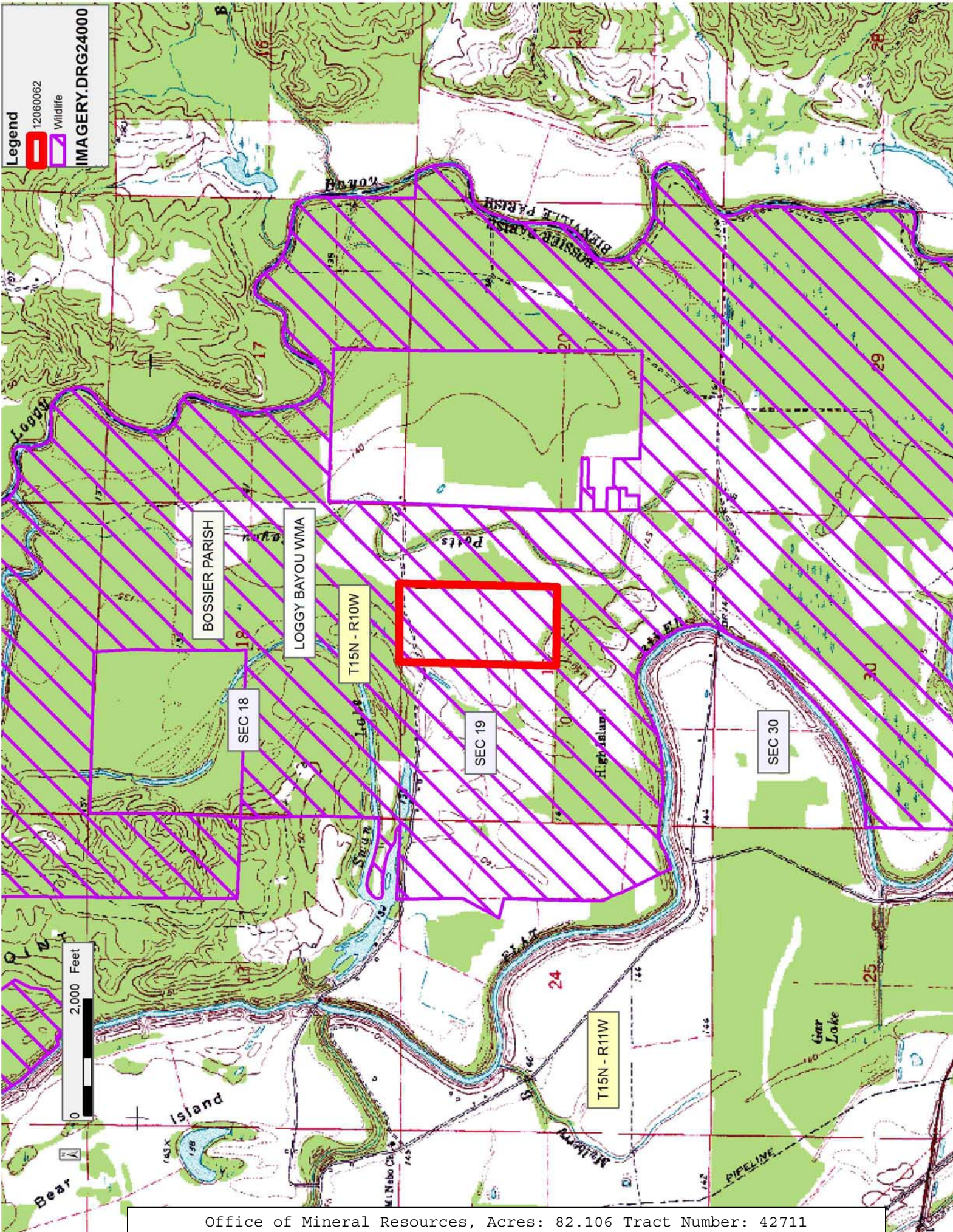
Applicant: THEOPHILUS OIL, GAS & LAND SERVICES, LLC

Bidder	Cash Payment	Price/ Acre	Rental	Oil	Gas	Other

Legend

12060062
Wildlife

IMAGERY.DRG24000



TRACT 42712 - De Soto and Natchitoches Parishes, Louisiana

All of the lands now or formerly constituting the beds and bottoms of all water bodies of every nature and description as to which title is vested in the State of Louisiana, together with all islands arising therein and other lands formed by accretion or by reliction, where allowed by law, excepting tax adjudicated lands, and not presently under mineral lease on June 13, 2012, situated in De Soto and Natchitoches Parishes, Louisiana, and more particularly described as follows: Beginning at a point having Coordinates of X = 1,708,084.67 and Y = 456,323.74; thence North 01 degrees 07 minutes 43 seconds East 5,347.30 feet to the Southeast corner of State Lease No. 20159, also being the Southwest corner of State Lease No. 20721 having Coordinates of X = 1,708,190.00 and Y = 461,670.00; thence East 5,194.80 feet along the South boundary of said State Lease No. 20721 to the Northwest corner of State Lease No. 20845 having Coordinates of X = 1,713,384.80 and Y = 461,670.00; thence South 5,447.29 feet along the West boundary of said State Lease No. 20845 to its Southwest corner having Coordinates of X = 1,713,384.80 and Y = 456,222.71; thence North 88 degrees 54 minutes 29 seconds West 5,301.09 feet to the point of beginning, containing approximately **10 acres**, all as more particularly outlined on a plat on file in the Office of Mineral Resources, Department of Natural Resources. All bearings, distances and coordinates are based on Louisiana Coordinate System of 1927, (North or South Zone), where applicable.

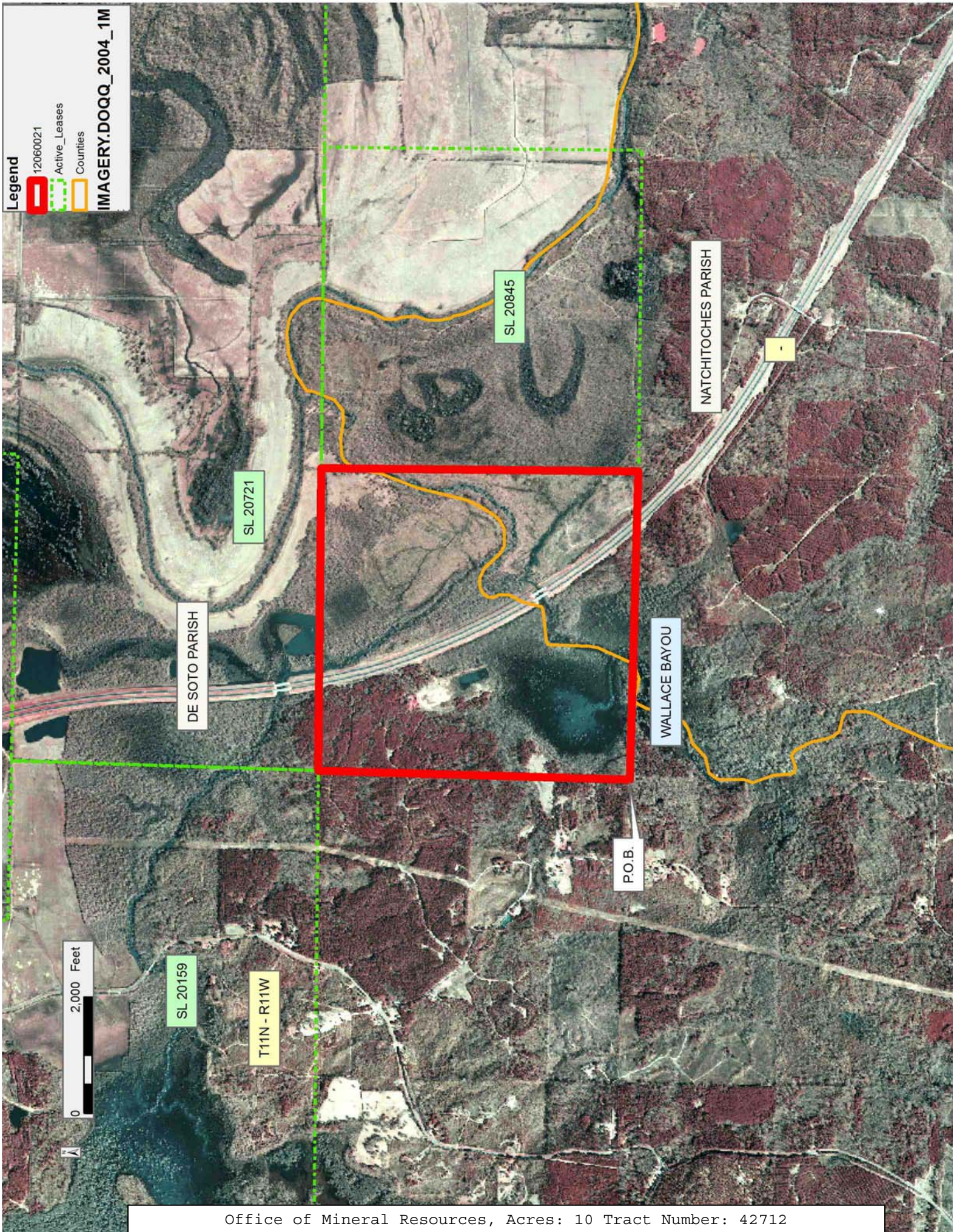
NOTE: The above description of the Tract nominated for lease has been provided and corrected, where required, exclusively by the nomination party. Any mineral lease selected from this Tract and awarded by the Louisiana State Mineral and Energy Board shall be without warranty of any kind, either express, implied, or statutory, including, but not limited to, the implied warranties of merchantability and fitness for a particular purpose. Should the mineral lease awarded by the Louisiana State Mineral and Energy Board be subsequently modified, cancelled or abrogated due to the existence of conflicting leases, operating agreements, private claims or other future obligations or conditions which may affect all or any portion of the leased Tract, it shall not relieve the Lessee of the obligation to pay any bonus due thereon to the Louisiana State Mineral and Energy Board, nor shall the Louisiana State Mineral and Energy Board be obligated to refund any consideration paid by the Lessor prior to such modification, cancellation, or abrogation, including, but not limited to, bonuses, rentals and royalties.

NOTE: A portion of the tract is included in the HA RA SUJ created by Order No. 700-G-6, Chemard Lake Field. The unit well, the HA RA SUJ; Adams 19 H Well No. 1, was completed in the Haynesville Shale on November 22, 2011, and tested at a daily rate of 5,611 Mcf gas, and 80 Bbls. water on a 12/64 inch choke with a perforated interval of 13,457 feet to 17,902 feet MD.

NOTE: The Office of Mineral Resources will require a minimum bonus of \$1500 per acre and a minimum royalty of 25%.

Applicant: STAFF OFFICE OF MINERAL RESOURCES

Bidder	Cash Payment	Price/ Acre	Rental	Oil	Gas	Other



TRACT 42713 - - Avoyelles and LaSalle Parishes, Louisiana

The State Mineral and Energy Board acting on behalf of the Avoyelles Parish, LaSalle Parish, Rapides Parish and Catahoula Parish School Boards, pursuant to Resolution(s) adopted by that (those) body(ies) and in accordance with Louisiana Revised Statutes 30:121-136 and 151-156, as amended, and Article XIV, Section 16(A)(9) and (B) of the Louisiana Constitution of 1974, as same may be continued and promulgated in proper statutory form and, further, amended from time to time, advertises the lands not under mineral lease on June 13, 2012, excluding the beds and bottoms of all navigable water bodies located within the following: All or a portion of Section 16, Township 04 North, Range 04 East in Avoyelles and LaSalle Parishes, Louisiana, (This tract excludes any waterbottoms claimed and owned by the state and excludes any portion of the Dewey W. Wills Wildlife Management Area), containing **632.425 acres**, all as more particularly outlined on a plat on file in the Office of Mineral Resources, Department of Natural Resources. All bearings, distances and coordinates are based on Louisiana Coordinate System of 1927, (North or South Zone).

NOTE: The above description of the Tract nominated for lease has been provided and corrected, where required, exclusively by the nomination party. Any mineral lease selected from this Tract and awarded by the Louisiana State Mineral and Energy Board shall be without warranty of any kind, either express, implied, or statutory, including, but not limited to, the implied warranties of merchantability and fitness for a particular purpose. Should the mineral lease awarded by the Louisiana State Mineral and Energy Board be subsequently modified, cancelled or abrogated due to the existence of conflicting leases, operating agreements, private claims or other future obligations or conditions which may affect all or any portion of the leased Tract, it shall not relieve the Lessee of the obligation to pay any bonus due thereon to the Louisiana State Mineral and Energy Board, nor shall the Louisiana State Mineral and Energy Board be obligated to refund any consideration paid by the Lessor prior to such modification, cancellation, or abrogation, including, but not limited to, bonuses, rentals and royalties.

NOTE: Lessors acknowledge that said Township 04 North, Range 04 East, is located 67.26% in the Parish of Avoyelles, 19.88% in the Parish of LaSalle, 9.08% in the Parish of Rapides, and 3.78% in the Parish of Catahoula; and Lessee is authorized and directed to pay any and all rentals and royalties which may accrue under the terms of this lease to Lessors separately and in the following proportions: Avoyelles Parish School Board 67.26%, LaSalle Parish School Board 19.88%, Rapides Parish School Board 9.08%, and Catahoula Parish School Board 3.78% and prospective bidders are hereby placed on notice that execution by the State Mineral Board of oil, gas and mineral lease on behalf of the Avoyelles Parish School Board, the LaSalle Parish School Board, the Rapides Parish School Board and the Catahoula Parish School Board on the above described portion of section shall not be construed as a waiver by

the State Mineral Board of any rights that it may have to lease for and on behalf of the State of Louisiana any navigable water bottoms that might be included within said portion of said section.

NOTE: A minimum bonus of \$200 per acre and a minimum royalty payment of 22.5% at the well head with no expense deductions will be required.

NOTE: No surface activities shall take place on the property without prior written consent of the School Board.

Applicant: AVOYELLES PARISH SCHOOL BOARD

Bidder	Cash Payment	Price/ Acre	Rental	Oil	Gas	Other

TRACT 42714 - - Avoyelles Parish, Louisiana

The State Mineral and Energy Board acting on behalf of the Avoyelles, Concordia and Catahoula Parish School Boards, pursuant to Resolution(s) adopted by that (those) body(ies) and in accordance with Louisiana Revised Statutes 30:121-136 and 151-156, as amended, and Article XIV, Section 16(A)(9) and (B) of the Louisiana Constitution of 1974, as same may be continued and promulgated in proper statutory form and, further, amended from time to time, advertises the lands not under mineral lease on June 13, 2012, excluding the beds and bottoms of all navigable water bodies located within the following: All or a portion of Section 16, Township 03 North, Range 06 East in Avoyelles Parish, Louisiana, containing **638.96 acres**, all as more particularly outlined on a plat on file in the Office of Mineral Resources, Department of Natural Resources. All bearings, distances and coordinates are based on Louisiana Coordinate System of 1927, (North or South Zone).

NOTE: The above description of the Tract nominated for lease has been provided and corrected, where required, exclusively by the nomination party. Any mineral lease selected from this Tract and awarded by the Louisiana State Mineral and Energy Board shall be without warranty of any kind, either express, implied, or statutory, including, but not limited to, the implied warranties of merchantability and fitness for a particular purpose. Should the mineral lease awarded by the Louisiana State Mineral and Energy Board be subsequently modified, cancelled or abrogated due to the existence of conflicting leases, operating agreements, private claims or other future obligations or conditions which may affect all or any portion of the leased Tract, it shall not relieve the Lessee of the obligation to pay any bonus due thereon to the Louisiana State Mineral and Energy Board, nor shall the Louisiana State Mineral and Energy Board be obligated to refund any consideration paid by the Lessor prior to such modification, cancellation, or abrogation, including, but not limited to, bonuses, rentals and royalties.

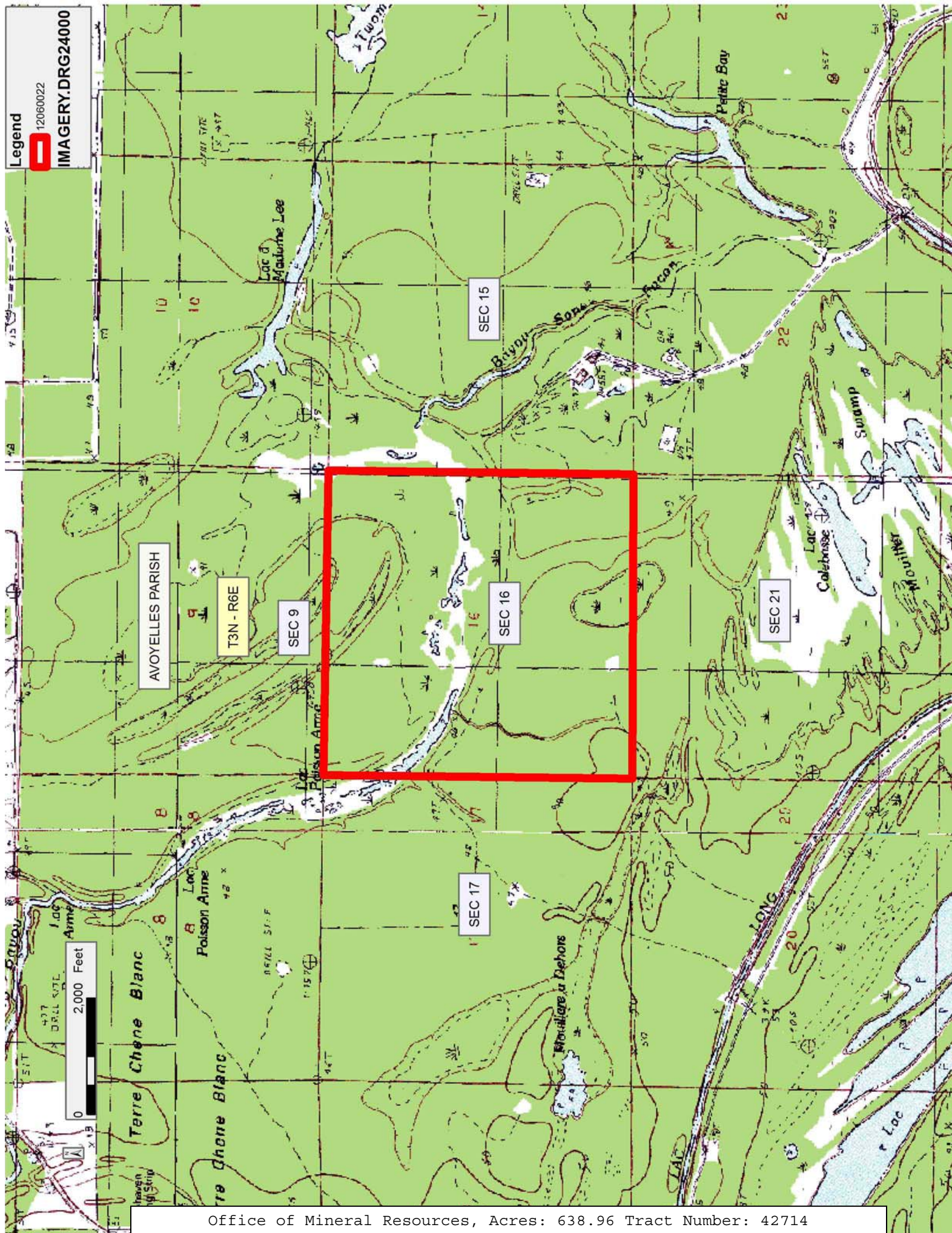
NOTE: Lessors acknowledge that said Township 3 North, Range 6 East, is located 91.75% in the Parish of Avoyelles, 7.52% in the Parish of Concordia, and 0.73% in the Parish of Catahoula; and Lessee is authorized and directed to pay any and all rentals and royalties which may accrue under the terms of this lease to Lessors separately and in the following proportions: Avoyelles Parish School Board 91.75%, Concordia Parish School Board 7.52%, and Catahoula Parish School Board 0.73% and prospective bidders are hereby placed on notice that execution by the State Mineral Board of oil, gas and mineral lease on behalf of the Avoyelles Parish School Board, the Concordia Parish School Board and the Catahoula Parish School Board on the above described portion of section shall not be construed as a waiver by the State Mineral Board of any rights that it may have to lease for and on behalf of the State of Louisiana any navigable water bottoms that might be included within said portion of said section.

NOTE: A minimum bonus of \$200 per acre and a minimum royalty payment of 22.5% at the well head with no expense deductions will be required.

NOTE: No surface activities shall take place on the property without prior written consent of the School Board.

Applicant: AVOYELLES PARISH SCHOOL BOARD

Bidder	Cash Payment	Price/ Acre	Rental	Oil	Gas	Other



TRACT 42715 - - Avoyelles Parish, Louisiana

The State Mineral and Energy Board acting on behalf of the Avoyelles Parish School Board, pursuant to Resolution(s) adopted by that (those) body(ies) and in accordance with Louisiana Revised Statutes 30:121-136 and 151-156, as amended, and Article XIV, Section 16(A)(9) and (B) of the Louisiana Constitution of 1974, as same may be continued and promulgated in proper statutory form and, further, amended from time to time, advertises the lands not under mineral lease on June 13, 2012, excluding the beds and bottoms of all navigable water bodies located within the following: All or a portion of Section 16, Township 03 North, Range 04 East in Avoyelles Parish, Louisiana, containing **647.46 acres**, all as more particularly outlined on a plat on file in the Office of Mineral Resources, Department of Natural Resources. All bearings, distances and coordinates are based on Louisiana Coordinate System of 1927, (North or South Zone).

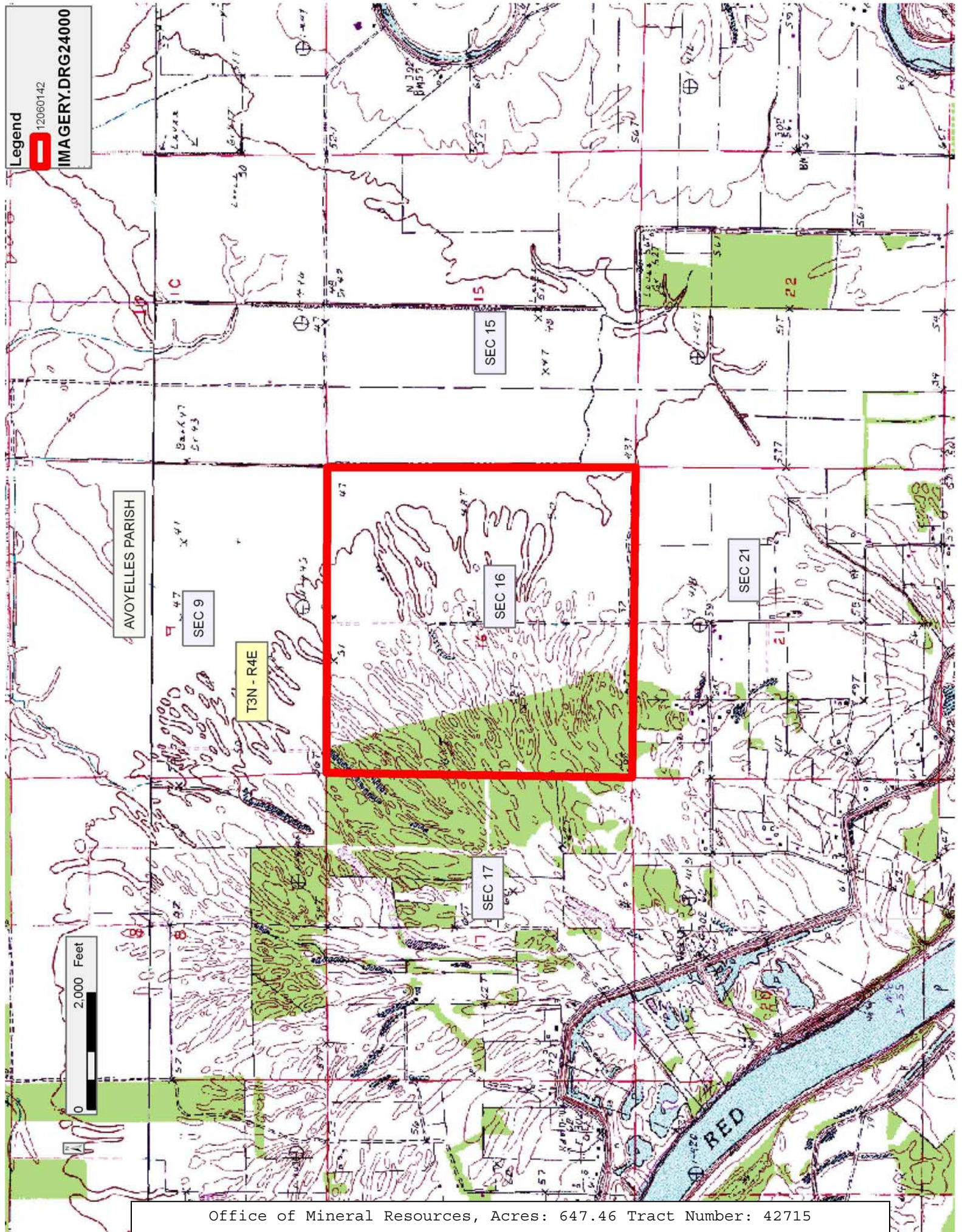
NOTE: The above description of the Tract nominated for lease has been provided and corrected, where required, exclusively by the nomination party. Any mineral lease selected from this Tract and awarded by the Louisiana State Mineral and Energy Board shall be without warranty of any kind, either express, implied, or statutory, including, but not limited to, the implied warranties of merchantability and fitness for a particular purpose. Should the mineral lease awarded by the Louisiana State Mineral and Energy Board be subsequently modified, cancelled or abrogated due to the existence of conflicting leases, operating agreements, private claims or other future obligations or conditions which may affect all or any portion of the leased Tract, it shall not relieve the Lessee of the obligation to pay any bonus due thereon to the Louisiana State Mineral and Energy Board, nor shall the Louisiana State Mineral and Energy Board be obligated to refund any consideration paid by the Lessor prior to such modification, cancellation, or abrogation, including, but not limited to, bonuses, rentals and royalties.

NOTE: A minimum bonus of \$200 per acre and a minimum royalty payment of 22.5% at the well head with no expense deductions will be required.

NOTE: No surface activities shall take place on the property without prior written consent of the School Board.

Applicant: AVOYELLES PARISH SCHOOL BOARD

Bidder	Cash Payment	Price/ Acre	Rental	Oil	Gas	Other



TRACT 42716 - - Avoyelles Parish, Louisiana

The State Mineral and Energy Board acting on behalf of the Avoyelles Parish School Board, pursuant to Resolution(s) adopted by that (those) body(ies) and in accordance with Louisiana Revised Statutes 30:121-136 and 151-156, as amended, and Article XIV, Section 16(A)(9) and (B) of the Louisiana Constitution of 1974, as same may be continued and promulgated in proper statutory form and, further, amended from time to time, advertises the lands not under mineral lease on June 13, 2012, excluding the beds and bottoms of all navigable water bodies located within the following: All or a portion of Section 16, Township 02 North, Range 05 East in Avoyelles Parish, Louisiana, **LESS AND EXCEPT 10.12 acres**, containing **639.08 acres**, all as more particularly outlined on a plat on file in the Office of Mineral Resources, Department of Natural Resources. All bearings, distances and coordinates are based on Louisiana Coordinate System of 1927, (North or South Zone).

NOTE: The above description of the Tract nominated for lease has been provided and corrected, where required, exclusively by the nomination party. Any mineral lease selected from this Tract and awarded by the Louisiana State Mineral and Energy Board shall be without warranty of any kind, either express, implied, or statutory, including, but not limited to, the implied warranties of merchantability and fitness for a particular purpose. Should the mineral lease awarded by the Louisiana State Mineral and Energy Board be subsequently modified, cancelled or abrogated due to the existence of conflicting leases, operating agreements, private claims or other future obligations or conditions which may affect all or any portion of the leased Tract, it shall not relieve the Lessee of the obligation to pay any bonus due thereon to the Louisiana State Mineral and Energy Board, nor shall the Louisiana State Mineral and Energy Board be obligated to refund any consideration paid by the Lessor prior to such modification, cancellation, or abrogation, including, but not limited to, bonuses, rentals and royalties.

NOTE: A minimum bonus of \$200 per acre and a minimum royalty payment of 22.5% at the well head with no expense deductions will be required.

NOTE: No surface activities shall take place on the property without prior written consent of the School Board.

Applicant: AVOYELLES PARISH SCHOOL BOARD

Bidder	Cash Payment	Price/ Acre	Rental	Oil	Gas	Other

TRACT 42717 - - Avoyelles Parish, Louisiana

The State Mineral and Energy Board acting on behalf of the Avoyelles Parish School Board, pursuant to Resolution(s) adopted by that (those) body(ies) and in accordance with Louisiana Revised Statutes 30:121-136 and 151-156, as amended, and Article XIV, Section 16(A)(9) and (B) of the Louisiana Constitution of 1974, as same may be continued and promulgated in proper statutory form and, further, amended from time to time, advertises the lands not under mineral lease on June 13, 2012, excluding the beds and bottoms of all navigable water bodies located within the following: All or a portion of Section 16, Township 02 North, Range 06 East in Avoyelles Parish, Louisiana, (This tract excludes any waterbottoms claimed and owned by the state), containing **639.169 acres**, all as more particularly outlined on a plat on file in the Office of Mineral Resources, Department of Natural Resources. All bearings, distances and coordinates are based on Louisiana Coordinate System of 1927, (North or South Zone).

NOTE: The above description of the Tract nominated for lease has been provided and corrected, where required, exclusively by the nomination party. Any mineral lease selected from this Tract and awarded by the Louisiana State Mineral and Energy Board shall be without warranty of any kind, either express, implied, or statutory, including, but not limited to, the implied warranties of merchantability and fitness for a particular purpose. Should the mineral lease awarded by the Louisiana State Mineral and Energy Board be subsequently modified, cancelled or abrogated due to the existence of conflicting leases, operating agreements, private claims or other future obligations or conditions which may affect all or any portion of the leased Tract, it shall not relieve the Lessee of the obligation to pay any bonus due thereon to the Louisiana State Mineral and Energy Board, nor shall the Louisiana State Mineral and Energy Board be obligated to refund any consideration paid by the Lessor prior to such modification, cancellation, or abrogation, including, but not limited to, bonuses, rentals and royalties.

NOTE: A minimum bonus of \$200 per acre and a minimum royalty payment of 22.5% at the well head with no expense deductions will be required.

NOTE: No surface activities shall take place on the property without prior written consent of the School Board.

Applicant: AVOYELLES PARISH SCHOOL BOARD

Bidder	Cash Payment	Price/ Acre	Rental	Oil	Gas	Other

Legend

12060024

IMAGERY.DRG24000

AVOUELLES PARISH

SEC 9

T2N - R6E

SEC 16

SEC 21

0 2,000 Feet