

**TRACT 42718 - - Avoyelles Parish, Louisiana**

The State Mineral and Energy Board acting on behalf of the Avoyelles and Concordia Parish School Boards, pursuant to Resolution(s) adopted by that (those) body(ies) and in accordance with Louisiana Revised Statutes 30:121-136 and 151-156, as amended, and Article XIV, Section 16(A)(9) and (B) of the Louisiana Constitution of 1974, as same may be continued and promulgated in proper statutory form and, further, amended from time to time, advertises the lands not under mineral lease on June 13, 2012, excluding the beds and bottoms of all navigable water bodies located within the following: All or a portion of Section 16, Township 02 North, Range 07 East in Avoyelles Parish, Louisiana, (This tract excludes any waterbottoms claimed and owned by the state), containing **628.526 acres**, all as more particularly outlined on a plat on file in the Office of Mineral Resources, Department of Natural Resources. All bearings, distances and coordinates are based on Louisiana Coordinate System of 1927, (North or South Zone).

NOTE: The above description of the Tract nominated for lease has been provided and corrected, where required, exclusively by the nomination party. Any mineral lease selected from this Tract and awarded by the Louisiana State Mineral and Energy Board shall be without warranty of any kind, either express, implied, or statutory, including, but not limited to, the implied warranties of merchantability and fitness for a particular purpose. Should the mineral lease awarded by the Louisiana State Mineral and Energy Board be subsequently modified, cancelled or abrogated due to the existence of conflicting leases, operating agreements, private claims or other future obligations or conditions which may affect all or any portion of the leased Tract, it shall not relieve the Lessee of the obligation to pay any bonus due thereon to the Louisiana State Mineral and Energy Board, nor shall the Louisiana State Mineral and Energy Board be obligated to refund any consideration paid by the Lessor prior to such modification, cancellation, or abrogation, including, but not limited to, bonuses, rentals and royalties.

NOTE: Lessors acknowledge that said Township 2 North, Range 7 East, is located 93.71% in the Parish of Avoyelles and 6.29% in the Parish of Concordia; and Lessee is authorized and directed to pay any and all rentals and royalties which may accrue under the terms of this lease to Lessors separately and in the following proportions: Avoyelles Parish School Board 93.71% and Concordia Parish School Board 6.29%, and prospective bidders are hereby placed on notice that execution by the State Mineral Board of oil, gas and mineral lease on behalf of the Avoyelles Parish School Board and the Concordia Parish School Board on the above described portion of section shall not be construed as a waiver by the State Mineral Board of any rights that it may have to lease for and on behalf of the State of Louisiana any navigable water bottoms that might be included within said portion of said section.

NOTE: A minimum bonus of \$200 per acre and a minimum royalty payment of 22.5% at the well head with no expense deductions will be required.

NOTE: No surface activities shall take place on the property without prior written consent of the School Board.

Applicant: AVOYELLES PARISH SCHOOL BOARD

Bidder	Cash Payment	Price/Acre	Rental	Oil	Gas	Other

Legend

12060023

Wildlife

IMAGERY.DRG24000

2,000 Feet

AVOYELLES PARISH

T2N - R7E

SEC 9

GRASSY LAKE STATE

GRASSY LAKE WILDLIFE MANAGEMENT AREA

SEC 16

SEC 21

GRASSY LAKE WMA

Legend

12060023

Wildlife

IMAGERY.DRG24000

2,000 Feet

AVOUELLES PARISH

T2N - R7E

SEC 9

GRASSY LAKE STATE

WILDLIFE MANAGEMENT AREA

SEC 16

SEC 21

GRASSY LAKE WMA

**TRACT 42719 - - Avoyelles Parish, Louisiana**

The State Mineral and Energy Board acting on behalf of the Avoyelles Parish School Board, pursuant to Resolution(s) adopted by that (those) body(ies) and in accordance with Louisiana Revised Statutes 30:121-136 and 151-156, as amended, and Article XIV, Section 16(A)(9) and (B) of the Louisiana Constitution of 1974, as same may be continued and promulgated in proper statutory form and, further, amended from time to time, advertises the lands not under mineral lease on June 13, 2012, excluding the beds and bottoms of all navigable water bodies located within the following: All or a portion of Section 16, Township 01 North, Range 06 East in Avoyelles Parish, Louisiana, containing **639.36 acres**, all as more particularly outlined on a plat on file in the Office of Mineral Resources, Department of Natural Resources. All bearings, distances and coordinates are based on Louisiana Coordinate System of 1927, (North or South Zone).

NOTE: The above description of the Tract nominated for lease has been provided and corrected, where required, exclusively by the nomination party. Any mineral lease selected from this Tract and awarded by the Louisiana State Mineral and Energy Board shall be without warranty of any kind, either express, implied, or statutory, including, but not limited to, the implied warranties of merchantability and fitness for a particular purpose. Should the mineral lease awarded by the Louisiana State Mineral and Energy Board be subsequently modified, cancelled or abrogated due to the existence of conflicting leases, operating agreements, private claims or other future obligations or conditions which may affect all or any portion of the leased Tract, it shall not relieve the Lessee of the obligation to pay any bonus due thereon to the Louisiana State Mineral and Energy Board, nor shall the Louisiana State Mineral and Energy Board be obligated to refund any consideration paid by the Lessor prior to such modification, cancellation, or abrogation, including, but not limited to, bonuses, rentals and royalties.

NOTE: A minimum bonus of \$200 per acre and a minimum royalty payment of 22.5% at the well head with no expense deductions will be required.

NOTE: No surface activities shall take place on the property without prior written consent of the School Board.

Applicant: AVOYELLES PARISH SCHOOL BOARD

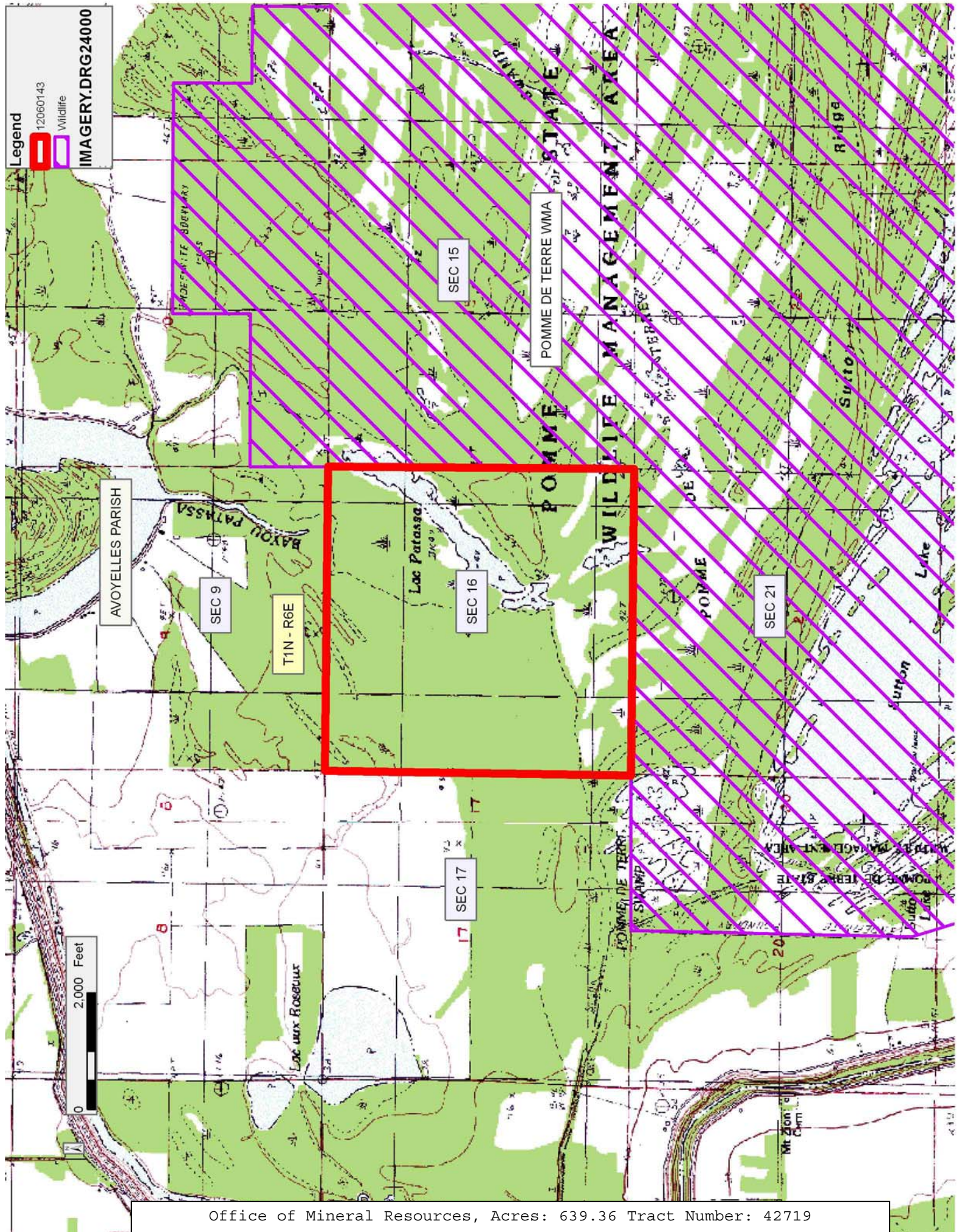
Bidder	Cash Payment	Price/Acre	Rental	Oil	Gas	Other

Legend

12060143

Wildlife

IMAGERY.DRG24000



**TRACT 42720 - - Avoyelles Parish, Louisiana**

The State Mineral and Energy Board acting on behalf of the Avoyelles and Concordia Parish School Boards, pursuant to Resolution(s) adopted by that (those) body(ies) and in accordance with Louisiana Revised Statutes 30:121-136 and 151-156, as amended, and Article XIV, Section 16(A)(9) and (B) of the Louisiana Constitution of 1974, as same may be continued and promulgated in proper statutory form and, further, amended from time to time, advertises the lands not under mineral lease on June 13, 2012, excluding the beds and bottoms of all navigable water bodies located within the following: All or a portion of Section 16, Township 01 North, Range 07 East in Avoyelles Parish, Louisiana, containing **639.20 acres**, all as more particularly outlined on a plat on file in the Office of Mineral Resources, Department of Natural Resources. All bearings, distances and coordinates are based on Louisiana Coordinate System of 1927, (North or South Zone).

NOTE: The above description of the Tract nominated for lease has been provided and corrected, where required, exclusively by the nomination party. Any mineral lease selected from this Tract and awarded by the Louisiana State Mineral and Energy Board shall be without warranty of any kind, either express, implied, or statutory, including, but not limited to, the implied warranties of merchantability and fitness for a particular purpose. Should the mineral lease awarded by the Louisiana State Mineral and Energy Board be subsequently modified, cancelled or abrogated due to the existence of conflicting leases, operating agreements, private claims or other future obligations or conditions which may affect all or any portion of the leased Tract, it shall not relieve the Lessee of the obligation to pay any bonus due thereon to the Louisiana State Mineral and Energy Board, nor shall the Louisiana State Mineral and Energy Board be obligated to refund any consideration paid by the Lessor prior to such modification, cancellation, or abrogation, including, but not limited to, bonuses, rentals and royalties.

NOTE: Lessors acknowledge that said Township 1 North, Range 7 East, is located 92.06% in the Parish of Avoyelles and 7.94% in the Parish of Concordia; and Lessee is authorized and directed to pay any and all rentals and royalties which may accrue under the terms of this lease to Lessors separately and in the following proportions: Avoyelles Parish School Board 92.06% and Concordia Parish School Board 7.94%, and prospective bidders are hereby placed on notice that execution by the State Mineral Board of oil, gas and mineral lease on behalf of the Avoyelles Parish School Board and the Concordia Parish School Board on the above described portion of section shall not be construed as a waiver by the State Mineral Board of any rights that it may have to lease for and on behalf of the State of Louisiana any navigable water bottoms that might be included within said portion of said section.

NOTE: A minimum bonus of \$200 per acre and a minimum royalty payment of 22.5% at the well head with no expense deductions will be required.



NOTE: No surface activities shall take place on the property without prior written consent of the School Board.

Applicant: AVOYELLES PARISH SCHOOL BOARD

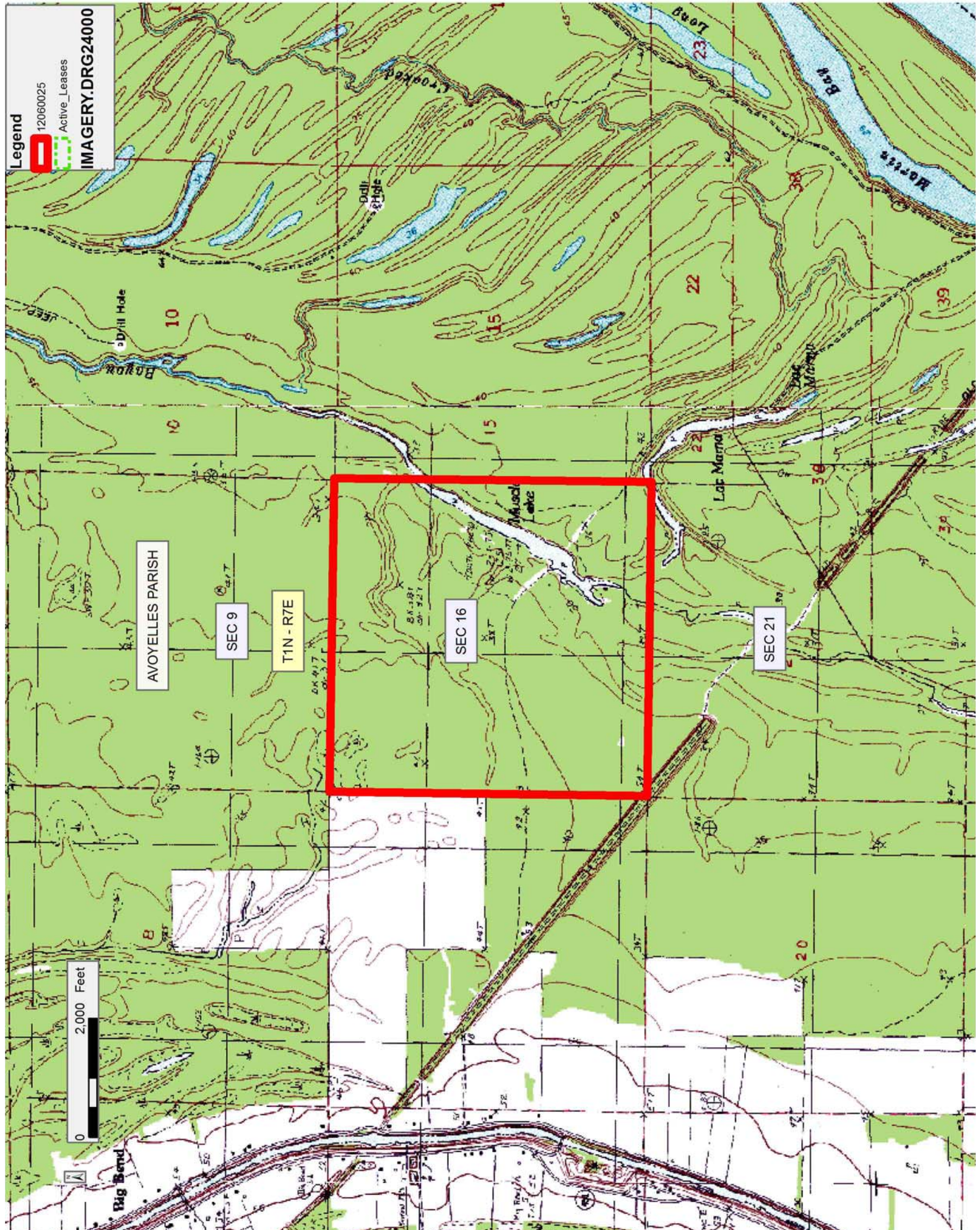
Bidder	Cash Payment	Price/Acre	Rental	Oil	Gas	Other

Legend

12060025

Active\_Leases

IMAGERY.DRG24000



**TRACT 42721 - St. Martin Parish, Louisiana**

All of the lands now or formerly constituting the beds and bottoms of all water bodies of every nature and description as to which title is vested in the State of Louisiana, together with all islands arising therein and other lands formed by accretion or by reliction, where allowed by law, excepting tax adjudicated lands, and not presently under mineral lease on June 13, 2012, situated in St. Martin Parish, Louisiana, and more particularly described as follows: Beginning at a point having Coordinates of X = 1,926,808.00 and Y = 562,109.00; thence East 2,815.00 feet to a point having Coordinates of X = 1,929,623.00 and Y = 562,109.00; thence South 4,230.00 feet to the Northwest corner of State Lease No. 20555 having Coordinates of X = 1,929,623.00 and Y = 557,879.00; thence South 1,430.00 feet along the boundary of said State Lease No. 20555 to its Southwest corner and the Northwest corner of State Lease No. 20557 having Coordinates of X = 1,929,623.00 and Y = 556,449.00; thence South 2,860.00 feet along the boundary of said State Lease No. 20557 to its Southwest corner having Coordinates of X = 1,929,623.00 and Y = 553,589.00; thence West 2,815.00 feet to a point having Coordinates of X = 1,926,808.00 and Y = 553,589.00; thence North 8,520.00 feet to the point of beginning, (This tract includes only waterbottoms claimed and owned by the state and specifically excludes any land which the state may claim or own and to which the mineral rights are vested in the state), containing approximately **191 acres**, all as more particularly outlined on a plat on file in the Office of Mineral Resources, Department of Natural Resources. All bearings, distances and coordinates are based on Louisiana Coordinate System of 1927, (North or South Zone), where applicable.

NOTE: The above description of the Tract nominated for lease has been provided and corrected, where required, exclusively by the nomination party. Any mineral lease selected from this Tract and awarded by the Louisiana State Mineral and Energy Board shall be without warranty of any kind, either express, implied, or statutory, including, but not limited to, the implied warranties of merchantability and fitness for a particular purpose. Should the mineral lease awarded by the Louisiana State Mineral and Energy Board be subsequently modified, cancelled or abrogated due to the existence of conflicting leases, operating agreements, private claims or other future obligations or conditions which may affect all or any portion of the leased Tract, it shall not relieve the Lessee of the obligation to pay any bonus due thereon to the Louisiana State Mineral and Energy Board, nor shall the Louisiana State Mineral and Energy Board be obligated to refund any consideration paid by the Lessor prior to such modification, cancellation, or abrogation, including, but not limited to, bonuses, rentals and royalties.

NOTE: This acreage is entirely within the boundary of the Atchafalaya Basin Legal Area.

Applicant: SCHOEFFLER ENERGY GROUP, INC.

Bidder	Cash Payment	Price/Acre	Rental	Oil	Gas	Other

Legend  
20080932  
Active Lease  
IMAGERY.DDQQ\_2008\_1M\_CIR

T9S - R9E

ST MARTIN PARISH

P.O.B.

LAKE MONGOULOIS

SL 20555

SL 20557

T10S - R9E



**TRACT 42722 - St. Martin Parish, Louisiana**

All of the lands now or formerly constituting the beds and bottoms of all water bodies of every nature and description as to which title is vested in the State of Louisiana, together with all islands arising therein and other lands formed by accretion or by reliction, where allowed by law, excepting tax adjudicated lands, and not presently under mineral lease on June 13, 2012, situated in St. Martin Parish, Louisiana, and more particularly described as follows: Beginning at a point having Coordinates of X = 1,929,623.00 and Y = 559,309.00; thence East 2,768.00 feet to a point being the Northeast corner of State Lease No. 20556 having Coordinates of X = 1,932,391.00 and Y = 559,309.00; thence South 1,430.00 feet along the Western boundary of said State Lease No. 20556 to a point being the Northeast corner of State Lease No. 20555 having Coordinates of X = 1,932,391.00 and Y = 557,879.00; thence West 2,768.00 feet along the boundary of said State Lease No. 20555 to its Northwest corner having Coordinates of X = 1,929,623.00 and Y = 557,879.00; thence North 1,430.00 feet to the point of beginning, containing approximately **4 acres**, all as more particularly outlined on a plat on file in the Office of Mineral Resources, Department of Natural Resources. All bearings, distances and coordinates are based on Louisiana Coordinate System of 1927, (North or South Zone), where applicable.

NOTE: The above description of the Tract nominated for lease has been provided and corrected, where required, exclusively by the nomination party. Any mineral lease selected from this Tract and awarded by the Louisiana State Mineral and Energy Board shall be without warranty of any kind, either express, implied, or statutory, including, but not limited to, the implied warranties of merchantability and fitness for a particular purpose. Should the mineral lease awarded by the Louisiana State Mineral and Energy Board be subsequently modified, cancelled or abrogated due to the existence of conflicting leases, operating agreements, private claims or other future obligations or conditions which may affect all or any portion of the leased Tract, it shall not relieve the Lessee of the obligation to pay any bonus due thereon to the Louisiana State Mineral and Energy Board, nor shall the Louisiana State Mineral and Energy Board be obligated to refund any consideration paid by the Lessor prior to such modification, cancellation, or abrogation, including, but not limited to, bonuses, rentals and royalties.

NOTE: This acreage is entirely within the boundary of the Atchafalaya Basin Legal Area.

Applicant: SCHOEFFLER ENERGY GROUP, INC.

Bidder	Cash Payment	Price/Acre	Rental	Oil	Gas	Other

Legend

12060044

Active Leases

IMAGERY.DOOQ\_2004\_1M

RGB

Red: Band\_1

Green: Band\_2

Blue: Band\_3

ST MARTIN PARISH

SPLICE ISLAND CHUTE

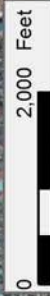
P.O.B.

SL 20556

SL 20555

LAKE MONGOULOIS

T10S - R9E





**TRACT 42723 - St. Martin Parish, Louisiana**

All of the lands now or formerly constituting the beds and bottoms of all water bodies of every nature and description as to which title is vested in the State of Louisiana, together with all islands arising therein and other lands formed by accretion or by reliction, where allowed by law, excepting tax adjudicated lands, and not presently under mineral lease on June 13, 2012, situated in St. Martin Parish, Louisiana, and more particularly described as follows: Beginning at a point having Coordinates of X = 1,926,808.00 and Y = 553,589.00; thence East 2,815.00 feet to the Southwest corner of State Lease No. 20557 having Coordinates of X = 1,929,623.00 and Y = 553,589.00; thence East 2,768.00 feet along the boundary of said State Lease No. 20557 to its Southeast corner having Coordinates of X = 1,932,391.00 and Y = 553,589.00; thence South 2,860.00 feet to a point having Coordinates of X = 1,932,391.00 and Y = 550,729.00; thence West 5,583.00 feet to a point having Coordinates of X = 1,926,808.00 and Y = 550,729.00; thence North 2,860.00 feet to the point of beginning, (This tract includes only waterbottoms claimed and owned by the state and specifically excludes any land which the state may claim or own and to which the mineral rights are vested in the state), containing approximately **30 acres**, all as more particularly outlined on a plat on file in the Office of Mineral Resources, Department of Natural Resources. All bearings, distances and coordinates are based on Louisiana Coordinate System of 1927, (North or South Zone), where applicable.

NOTE: The above description of the Tract nominated for lease has been provided and corrected, where required, exclusively by the nomination party. Any mineral lease selected from this Tract and awarded by the Louisiana State Mineral and Energy Board shall be without warranty of any kind, either express, implied, or statutory, including, but not limited to, the implied warranties of merchantability and fitness for a particular purpose. Should the mineral lease awarded by the Louisiana State Mineral and Energy Board be subsequently modified, cancelled or abrogated due to the existence of conflicting leases, operating agreements, private claims or other future obligations or conditions which may affect all or any portion of the leased Tract, it shall not relieve the Lessee of the obligation to pay any bonus due thereon to the Louisiana State Mineral and Energy Board, nor shall the Louisiana State Mineral and Energy Board be obligated to refund any consideration paid by the Lessor prior to such modification, cancellation, or abrogation, including, but not limited to, bonuses, rentals and royalties.

NOTE: This acreage is entirely within the boundary of the Atchafalaya Basin Legal Area.

Applicant: SCHOEFFLER ENERGY GROUP, INC.

Bidder	Cash Payment	Price/Acre	Rental	Oil	Gas	Other

Legend

12060043

Active\_Leases

IMAGERY.DOQQ\_2008\_1M\_CIR

0 2,000 Feet



ST MARTIN PARISH

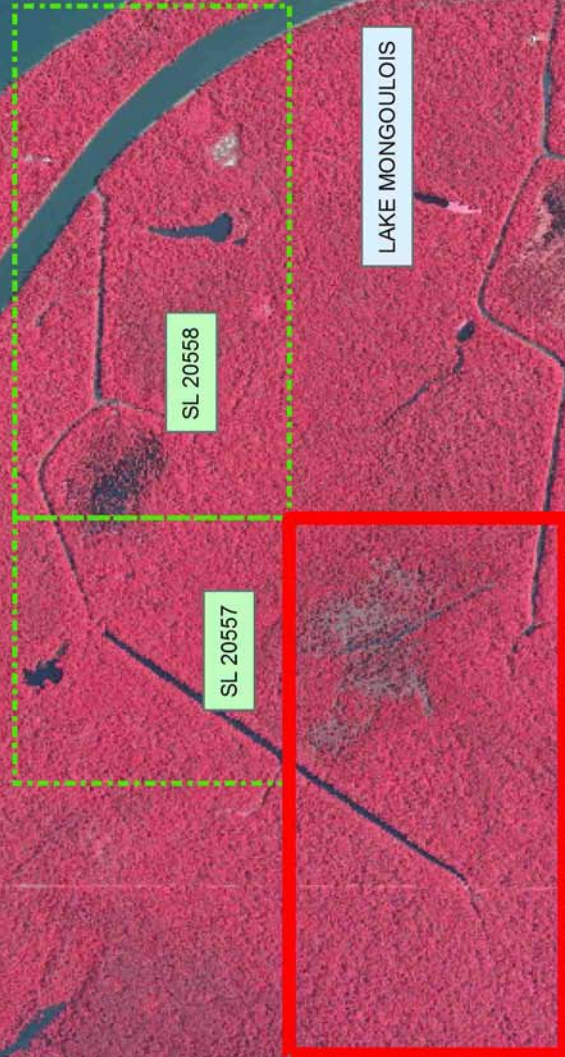
T10S - R9E

P.O.B.

LAKE MONGOULOIS

SL 20558

SL 20557



**TRACT 42724 - Portion of Blocks 12, and 21, Breton Sound Area, Plaquemines Parish, Louisiana**

All of the lands now or formerly constituting the beds and bottoms of all water bodies of every nature and description as to which title is vested in the State of Louisiana, together with all islands arising therein and other lands formed by accretion or by reliction, where allowed by law, excepting tax adjudicated lands, and not presently under mineral lease on June 13, 2012, situated in Plaquemines Parish, Louisiana, and more particularly described as follows: Beginning at a point on the West line of Block 12, Breton Sound Area having Coordinates of X = 2,694,350.00 and Y = 358,853.50; thence South 72 degrees 02 minutes 31 seconds East 10,617.24 feet to a point having Coordinates of X = 2,704,450.00 and Y = 355,580.00; thence South 3,750.00 feet to the Northwest corner of State Lease No. 1998, as amended, said corner also being a point on the common block line between said Block 12 and Block 21, Breton Sound Area having Coordinates of X = 2,704,450.00 and Y = 351,830.00; thence along the boundary of said State Lease No. 1998 the following courses: South 2,850.00 feet to a point having Coordinates of X = 2,704,450.00 and Y = 348,980.00 and South 45 degrees 15 minutes 59 seconds West 6,223.27 feet to a point having Coordinates of X = 2,700,029.07 and Y = 344,600.00; thence West 1,429.07 feet to a point having Coordinates of X = 2,698,600.00 and Y = 344,600.00; thence North 2,100.00 feet to a point having Coordinates of X = 2,698,600.00 and Y = 346,700.00; thence West 4,250.00 feet to a point on the West line of said Block 21 having Coordinates of X = 2,694,350.00 and Y = 346,700.00; thence North 5,130.00 feet along the West line of said Block 21 to its Northwest corner, also being the Southwest corner of said Block 12 having Coordinates of X = 2,694,350.00 and Y = 351,830.00; thence North 7,023.50 feet along the West line of said Block 12 to the point of beginning, containing approximately **2,498.22 acres**, all as more particularly outlined on a plat on file in the Office of Mineral Resources, Department of Natural Resources. All bearings, distances and coordinates are based on Louisiana Coordinate System of 1927, (North or South Zone), where applicable.

NOTE: The above description of the Tract nominated for lease has been provided and corrected, where required, exclusively by the nomination party. Any mineral lease selected from this Tract and awarded by the Louisiana State Mineral and Energy Board shall be without warranty of any kind, either express, implied, or statutory, including, but not limited to, the implied warranties of merchantability and fitness for a particular purpose. Should the mineral lease awarded by the Louisiana State Mineral and Energy Board be subsequently modified, cancelled or abrogated due to the existence of conflicting leases, operating agreements, private claims or other future obligations or conditions which may affect all or any portion of the leased Tract, it shall not relieve the Lessee of the obligation to pay any bonus due thereon to the Louisiana State Mineral and Energy Board, nor shall the Louisiana State Mineral and Energy Board be obligated to refund any consideration paid by the Lessor prior to such

modification, cancellation, or abrogation, including, but not limited to, bonuses, rentals and royalties.

NOTE: The State of Louisiana does hereby reserve, and this lease shall be subject to, the imprescriptible right of surface use in the nature of a servitude in favor of the Department of Natural Resources, including its Offices and Commissions, for the sole purpose of implementing, constructing, servicing and maintaining approved coastal zone management and/or restoration projects. Utilization of any and all rights derived under this lease by the mineral lessee, its agents, successors or assigns, shall not interfere with nor hinder the reasonable surface use by the Department of Natural Resources, its Offices or Commissions, as herein above reserved.

NOTE: This tract is located in an area designated by the Louisiana Legislature or the Wildlife and Fisheries Commission as a Public Oyster Seed Ground, Reservation, or area of Calcasieu or Sabine Lake. Proposed projects occurring in these areas will be evaluated on a case by case basis by Louisiana Department of Wildlife & Fisheries. Modifications to proposed project features including, but not limited to, access routes, well sites, flowlines, and appurtenant structures maybe required by the Louisiana Department of Wildlife and Fisheries. In addition, compensatory mitigation will be required to offset unavoidable habitat impacts.

Applicant: SYNERGY LAND COMPANY, INC.

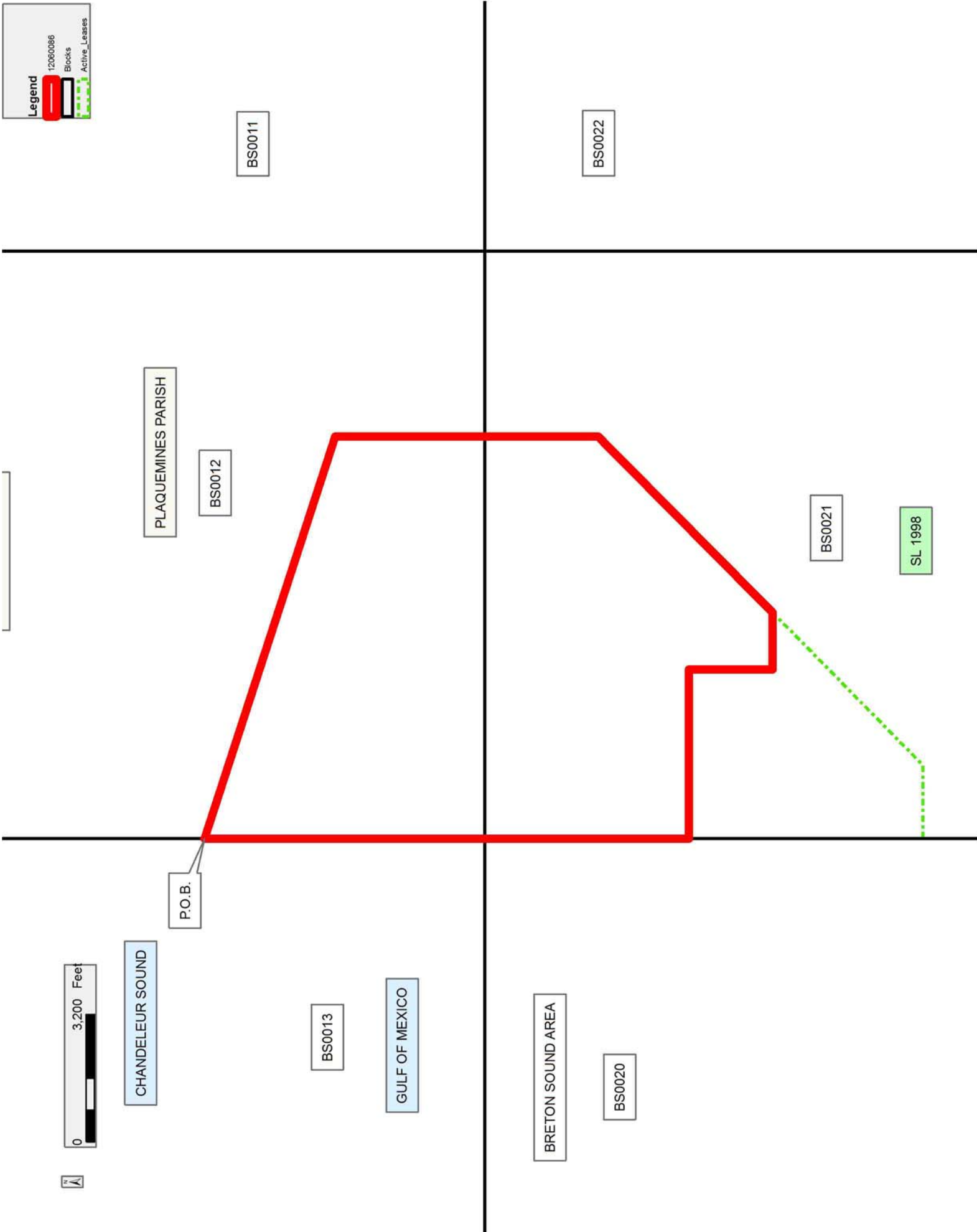
Bidder	Cash Payment	Price/Acre	Rental	Oil	Gas	Other

**Legend**

12060086

Blocks

Active\_Leases



**TRACT 42725 - Portion of Blocks 10, and 9, Main Pass Area, Revised, Plaquemines and St. Bernard Parishes, Louisiana**

All of the lands now or formerly constituting the beds and bottoms of all water bodies of every nature and description as to which title is vested in the State of Louisiana, together with all islands arising therein and other lands formed by accretion or by reliction, where allowed by law, excepting tax adjudicated lands, and not presently under mineral lease on June 13, 2012, situated in Plaquemines and St. Bernard Parishes, Louisiana, and more particularly described as follows: Beginning at a point within Block 10, Main Pass Area, Revised, having Coordinates of X = 2,617,800.00 and Y = 359,500.00; thence East 2,800.00 feet to a point on the common block line of said Block 10 and Block 9, Main Pass Area, Revised, having Coordinates of X = 2,620,600.00 and Y = 359,500.00; thence East 10,000.00 feet to a point having X = 2,630,600.00 and Y = 359,500.00; thence South 7,670.00 feet to a point on the South line of said Block 9 having Coordinates of X = 2,630,600.00 and Y = 351,830.00; thence West 10,000.00 feet along the South line of said Block 9 to its Southwest corner, also being the Southeast corner of said Block 10 having Coordinates of X = 2,620,600.00 and Y = 351,830.00; thence West 2,800.00 feet along the South line of said Block 10 to a point having Coordinates of X = 2,617,800.00 and Y = 351,830.00; thence North 7,670.00 feet to the point of beginning, containing approximately **2,253.81 acres**, all as more particularly outlined on a plat on file in the Office of Mineral Resources, Department of Natural Resources. All bearings, distances and coordinates are based on Louisiana Coordinate System of 1927, (North or South Zone), where applicable.

NOTE: The above description of the Tract nominated for lease has been provided and corrected, where required, exclusively by the nomination party. Any mineral lease selected from this Tract and awarded by the Louisiana State Mineral and Energy Board shall be without warranty of any kind, either express, implied, or statutory, including, but not limited to, the implied warranties of merchantability and fitness for a particular purpose. Should the mineral lease awarded by the Louisiana State Mineral and Energy Board be subsequently modified, cancelled or abrogated due to the existence of conflicting leases, operating agreements, private claims or other future obligations or conditions which may affect all or any portion of the leased Tract, it shall not relieve the Lessee of the obligation to pay any bonus due thereon to the Louisiana State Mineral and Energy Board, nor shall the Louisiana State Mineral and Energy Board be obligated to refund any consideration paid by the Lessor prior to such modification, cancellation, or abrogation, including, but not limited to, bonuses, rentals and royalties.

NOTE: The State of Louisiana does hereby reserve, and this lease shall be subject to, the imprescriptible right of surface use in the nature of a servitude in favor of the Department of Natural Resources, including its Offices and Commissions, for the sole purpose of implementing, constructing, servicing and maintaining approved coastal zone management

and/or restoration projects. Utilization of any and all rights derived under this lease by the mineral lessee, its agents, successors or assigns, shall not interfere with nor hinder the reasonable surface use by the Department of Natural Resources, its Offices or Commissions, as herein above reserved.

NOTE: It appears, according to our records, that a portion of this Tract is located within the restrictive safety fairway area as set out by the Corps of Engineers, U.S. Army and/or the restrictive anchorage area as set out by the U.S. Coast Guard.

NOTE: This tract is located in an area designated by the Louisiana Legislature or the Wildlife and Fisheries Commission as a Public Oyster Seed Ground, Reservation, or area of Calcasieu or Sabine Lake. Proposed projects occurring in these areas will be evaluated on a case by case basis by Louisiana Department of Wildlife & Fisheries. Modifications to proposed project features including, but not limited to, access routes, well sites, flowlines, and appurtenant structures maybe required by the Louisiana Department of Wildlife and Fisheries. In addition, compensatory mitigation will be required to offset unavoidable habitat impacts.

Applicant: SYNERGY LAND COMPANY, INC.

Bidder	Cash Payment	Price/Acre	Rental	Oil	Gas	Other



**Legend**

- 12060082
- Blocks
- Counties

ST BERNARD PARISH

MP0009

CHANDELEUR SOUND



P.O.B.

MP0010

PLAQUEMINES PARISH

MAIN PASS AREA, REVISED

MP0016

MP0015

**TRACT 42726 - Portion of Blocks 15, and 18, Breton Sound Area, Plaquemines and St. Bernard Parishes, Louisiana**

All of the lands now or formerly constituting the beds and bottoms of all water bodies of every nature and description as to which title is vested in the State of Louisiana, together with all islands arising therein and other lands formed by accretion or by reliction, where allowed by law, excepting tax adjudicated lands, and not presently under mineral lease on June 13, 2012, situated in Plaquemines and St. Bernard Parishes, Louisiana, and more particularly described as follows: Beginning at a point on the West line of Block 15, Breton Sound Area having Coordinates of X = 2,650,100.00 and Y = 359,100.00; thence East 7,900.00 feet to a point having Coordinates of X = 2,658,000.00 and Y = 359,100.00; thence South 7,270.00 feet to a point on the common block line of said Block 15 and Block 18, Breton Sound Area having Coordinates of X = 2,658,000.00 and Y = 351,830.00; thence South 5,115.62 feet to a point on the Northern boundary of State Lease No. 16594, as amended, having Coordinates of X = 2,658,000.00 and Y = 346,714.38; thence along the boundary of said State Lease No. 16594 the following courses: South 82 degrees 09 minutes 17 seconds West 266.50 feet to a point having Coordinates of X = 2,657,735.99 and Y = 346,678.00; South 31 degrees 17 minutes 36 seconds West 119.36 feet to a point having Coordinates of X = 2,657,674.00 and Y = 346,576.01; South 18 degrees 26 minutes 05 seconds West 63.25 feet to a point having Coordinates of X = 2,657,653.99 and Y = 346,516.00; South 07 degrees 41 minutes 03 seconds West 127.14 feet to a point having Coordinates of X = 2,657,636.99 and Y = 346,390.00; South 02 degrees 35 minutes 00 seconds East 133.14 feet to a point having Coordinates of X = 2,657,643.00 and Y = 346,257.00; South 11 degrees 18 minutes 36 seconds East 66.29 feet to a point having Coordinates of X = 2,657,656.00 and Y = 346,192.00; South 19 degrees 50 minutes 27 seconds East 103.12 feet to a point having Coordinates of X = 2,657,691.00 and Y = 346,095.00 and South 32 degrees 21 minutes 49 seconds East 81.85 feet to the Westernmost Northwest corner of State Lease No. 16442, as amended, having Coordinates of X = 2,657,734.81 and Y = 346,025.86; thence along the boundary of said State Lease No. 16442 the following courses: South 32 degrees 21 minutes 55 seconds East 121.78 feet to a point having Coordinates of X = 2,657,800.00 and Y = 345,923.00 and South 39 degrees 12 minutes 03 seconds East 674.89 feet to a point having Coordinates of X = 2,658,226.56 and Y = 345,400.00; thence West 8,126.56 feet to a point on the West line of said Block 18 having Coordinates of X = 2,650,100.00 and Y = 345,400.00; thence North 6,430.00 feet along the West line of said Block 18 to its Northwest corner, also being the Southwest corner of said Block 15 having Coordinates of X = 2,650,100.00 and Y = 351,830.00; thence North 7,270.00 feet along the West line of said Block 15 to the point of beginning, containing approximately **2,479.13 acres**, all as more particularly outlined on a plat on file in the Office of Mineral Resources, Department of Natural Resources. All bearings, distances and coordinates are based on Louisiana Coordinate System of 1927, (North or South Zone), where applicable.

NOTE: The above description of the Tract nominated for lease has been provided and corrected, where required, exclusively by the nomination party. Any mineral lease selected from this Tract and awarded by the Louisiana State Mineral and Energy Board shall be without warranty of any kind, either express, implied, or statutory, including, but not limited to, the implied warranties of merchantability and fitness for a particular purpose. Should the mineral lease awarded by the Louisiana State Mineral and Energy Board be subsequently modified, cancelled or abrogated due to the existence of conflicting leases, operating agreements, private claims or other future obligations or conditions which may affect all or any portion of the leased Tract, it shall not relieve the Lessee of the obligation to pay any bonus due thereon to the Louisiana State Mineral and Energy Board, nor shall the Louisiana State Mineral and Energy Board be obligated to refund any consideration paid by the Lessor prior to such modification, cancellation, or abrogation, including, but not limited to, bonuses, rentals and royalties.

NOTE: The State of Louisiana does hereby reserve, and this lease shall be subject to, the imprescriptible right of surface use in the nature of a servitude in favor of the Department of Natural Resources, including its Offices and Commissions, for the sole purpose of implementing, constructing, servicing and maintaining approved coastal zone management and/or restoration projects. Utilization of any and all rights derived under this lease by the mineral lessee, its agents, successors or assigns, shall not interfere with nor hinder the reasonable surface use by the Department of Natural Resources, its Offices or Commissions, as herein above reserved.

NOTE: It appears, according to our records, that a portion of this Tract is located within the restrictive safety fairway area as set out by the Corps of Engineers, U.S. Army and/or the restrictive anchorage area as set out by the U.S. Coast Guard.

NOTE: This tract is located in an area designated by the Louisiana Legislature or the Wildlife and Fisheries Commission as a Public Oyster Seed Ground, Reservation, or area of Calcasieu or Sabine Lake. Proposed projects occurring in these areas will be evaluated on a case by case basis by Louisiana Department of Wildlife & Fisheries. Modifications to proposed project features including, but not limited to, access routes, well sites, flowlines, and appurtenant structures maybe required by the Louisiana Department of Wildlife and Fisheries. In addition, compensatory mitigation will be required to offset unavoidable habitat impacts.

Applicant: SYNERGY LAND COMPANY, INC.

Bidder	Cash Payment	Price/Acre	Rental	Oil	Gas	Other

**Legend**

- 12060083
- Blocks
- Active\_Leases
- Counties

ST BERNARD PARISH

CHANDELEUR SOUND

BS0015

SL 16594

SL 16442

GULF OF MEXICO

BS0018

PLAQUEMINES PARISH



BS0016

P.O.B.

BS0017

**TRACT 42727 - Portion of Blocks 13, and 20, Breton Sound Area, Plaquemines and St. Bernard Parishes, Louisiana**

All of the lands now or formerly constituting the beds and bottoms of all water bodies of every nature and description as to which title is vested in the State of Louisiana, together with all islands arising therein and other lands formed by accretion or by reliction, where allowed by law, excepting tax adjudicated lands, and not presently under mineral lease on June 13, 2012, situated in Plaquemines and St. Bernard Parishes, Louisiana, and more particularly described as follows: Beginning at a point on the West line of Block 13, Breton Sound Area, having Coordinates of X = 2,679,600.00 and Y = 358,600.00; thence East 3,400.00 feet to a point having Coordinates of X = 2,683,000.00 and Y = 358,600.00; thence South 37 degrees 10 minutes 37 seconds East 4,191.91 feet to a point having Coordinates of X = 2,685,533.09 and Y = 355,260.00; thence East 3,046.91 feet to a point having Coordinates of X = 2,688,580.00 and Y = 355,260.00; thence North 43 degrees 48 minutes 49 seconds East 4,628.63 feet to a point having Coordinates of X = 2,691,784.46 and Y = 358,600.00; thence East 2,565.54 feet to a point on the East line of said Block 13 having Coordinates of X = 2,694,350.00 and Y = 358,600.00; thence South 6,770.00 feet along the East line of said Block 13 to its Southeast corner, also being the Northeast corner of Block 20, Breton Sound Area, having Coordinates of X = 2,694,350.00 and Y = 351,830.00; thence South 2,110.00 feet along the East line of said Block 20 to a point having Coordinates of X = 2,694,350.00 and Y = 349,720.00; thence West 2,700.00 feet to a point having Coordinates of X = 2,691,650.00 and Y = 349,720.00; thence South 01 degrees 17 minutes 49 seconds East 2,590.66 feet to a point having Coordinates of X = 2,691,708.64 and Y = 347,130.00; thence West 3,058.64 feet to a point having Coordinates of X = 2,688,650.00 and Y = 347,130.00; thence North 66 degrees 24 minutes 05 seconds West 3,197.39 feet to a point having Coordinates of X = 2,685,720.00 and Y = 348,410.00; thence North 15 degrees 07 minutes 42 seconds West 3,542.78 feet to a point on the common block line between said Block 20 and said Block 13 having Coordinates of X = 2,684,795.41 and Y = 351,830.00; thence North 70 degrees 25 minutes 04 seconds West 5,514.35 feet to a point on the West line of said Block 13 having Coordinates of X = 2,679,600.00 and Y = 353,678.18; thence North 4,921.82 feet along the West line of said Block 13 to the point of beginning, containing approximately **2,494.21 acres**, all as more particularly outlined on a plat on file in the Office of Mineral Resources, Department of Natural Resources. All bearings, distances and coordinates are based on Louisiana Coordinate System of 1927, (North or South Zone), where applicable.

NOTE: The above description of the Tract nominated for lease has been provided and corrected, where required, exclusively by the nomination party. Any mineral lease selected from this Tract and awarded by the Louisiana State Mineral and Energy Board shall be without warranty of any kind, either express, implied, or statutory, including, but not limited to, the implied warranties of merchantability and fitness for a particular purpose. Should the mineral lease awarded by the Louisiana State Mineral

and Energy Board be subsequently modified, cancelled or abrogated due to the existence of conflicting leases, operating agreements, private claims or other future obligations or conditions which may affect all or any portion of the leased Tract, it shall not relieve the Lessee of the obligation to pay any bonus due thereon to the Louisiana State Mineral and Energy Board, nor shall the Louisiana State Mineral and Energy Board be obligated to refund any consideration paid by the Lessor prior to such modification, cancellation, or abrogation, including, but not limited to, bonuses, rentals and royalties.

NOTE: The State of Louisiana does hereby reserve, and this lease shall be subject to, the imprescriptible right of surface use in the nature of a servitude in favor of the Department of Natural Resources, including its Offices and Commissions, for the sole purpose of implementing, constructing, servicing and maintaining approved coastal zone management and/or restoration projects. Utilization of any and all rights derived under this lease by the mineral lessee, its agents, successors or assigns, shall not interfere with nor hinder the reasonable surface use by the Department of Natural Resources, its Offices or Commissions, as herein above reserved.

NOTE: This tract is located in an area designated by the Louisiana Legislature or the Wildlife and Fisheries Commission as a Public Oyster Seed Ground, Reservation, or area of Calcasieu or Sabine Lake. Proposed projects occurring in these areas will be evaluated on a case by case basis by Louisiana Department of Wildlife & Fisheries. Modifications to proposed project features including, but not limited to, access routes, well sites, flowlines, and appurtenant structures maybe required by the Louisiana Department of Wildlife and Fisheries. In addition, compensatory mitigation will be required to offset unavoidable habitat impacts.

Applicant: SYNERGY LAND COMPANY, INC.

Bidder	Cash Payment	Price/Acre	Rental	Oil	Gas	Other

**Legend**

- 12060085
- Blocks
- Counties

