

**TRACT 42728 - Portion of Block 19, Breton Sound Area, Plaquemines Parish, Louisiana**

All of the lands now or formerly constituting the beds and bottoms of all water bodies of every nature and description as to which title is vested in the State of Louisiana, together with all islands arising therein and other lands formed by accretion or by reliction, where allowed by law, excepting tax adjudicated lands, and not presently under mineral lease on June 13, 2012, situated in Plaquemines Parish, Louisiana, and more particularly described as follows: Beginning at the Northwest corner of Block 19, Breton Sound Area having Coordinates of X = 2,664,850.00 and Y = 351,830.00; thence East 12,450.00 feet along the North line of said Block 19 to a point having Coordinates of X = 2,677,300.00 and Y = 351,830.00; thence South 3,400.00 feet to the Northeast corner of State Lease No. 16823 having Coordinates of X = 2,677,300.00 and Y = 348,430.00; thence along the boundary of said State Lease No. 16823 the following courses: West 3,100.00 feet to a point having Coordinates of X = 2,674,200.00 and Y = 348,430.00; South 2,600.00 feet to a point having Coordinates of X = 2,674,200.00 and Y = 345,830.00 and East 3,100.00 feet to a point having Coordinates of X = 2,677,300.00 and Y = 345,830.00; thence South 5,871.06 feet to a point having Coordinates of X = 2,677,300.00 and Y = 339,958.94; thence West 7,661.32 feet to the Southernmost Southeast corner of the Northern portion of State Lease No. 16610, as amended, having Coordinates of X = 2,669,638.68 and Y = 339,958.95; thence along the boundary of the Northern portion of said State Lease No. 16610 the following courses: North 11 degrees 54 minutes 04 seconds East 140.67 feet to a point having Coordinates of X = 2,669,667.69 and Y = 340,096.60; North 06 degrees 34 minutes 02 seconds East 354.64 feet to a point having Coordinates of X = 2,669,708.25 and Y = 340,448.91; North 00 degrees 44 minutes 07 seconds East 487.86 feet to a point having Coordinates of X = 2,669,714.51 and Y = 340,936.73; North 05 degrees 42 minutes 57 seconds West 357.95 feet to a point having Coordinates of X = 2,669,678.86 and Y = 341,292.90; South 76 degrees 14 minutes 07 seconds East 999.85 feet to a point having Coordinates of X = 2,670,650.00 and Y = 341,055.00; North 1,700.00 feet to a point having Coordinates of X = 2,670,650.00 and Y = 342,755.00; North 49 degrees 38 minutes 08 seconds West 2,624.88 feet to a point having Coordinates of X = 2,668,650.00 and Y = 344,455.00 and West 832.00 feet to the Southeast corner of State Lease No. 20433 having Coordinates of X = 2,667,818.00 and Y = 344,455.00; thence along the boundary of said State Lease No. 20433 the following courses: North 3,079.00 feet to a point having Coordinates of X = 2,667,818.00 and Y = 347,534.00 and West 2,968.00 feet to a point on the West line of said Block 19 having Coordinates of X = 2,664,850.00 and Y = 347,534.00; thence North 4,296.00 feet along the West line of said Block 19 to the point of beginning, containing approximately **2,465.04 acres**, all as more particularly outlined on a plat on file in the Office of Mineral Resources, Department of Natural Resources. All bearings, distances and coordinates are based on Louisiana Coordinate System of 1927, (North or South Zone), where applicable.

NOTE: The above description of the Tract nominated for lease has been provided and corrected, where required, exclusively by the nomination party. Any mineral lease selected from this Tract and awarded by the Louisiana State Mineral and Energy Board shall be without warranty of any kind, either express, implied, or statutory, including, but not limited to, the implied warranties of merchantability and fitness for a particular purpose. Should the mineral lease awarded by the Louisiana State Mineral and Energy Board be subsequently modified, cancelled or abrogated due to the existence of conflicting leases, operating agreements, private claims or other future obligations or conditions which may affect all or any portion of the leased Tract, it shall not relieve the Lessee of the obligation to pay any bonus due thereon to the Louisiana State Mineral and Energy Board, nor shall the Louisiana State Mineral and Energy Board be obligated to refund any consideration paid by the Lessor prior to such modification, cancellation, or abrogation, including, but not limited to, bonuses, rentals and royalties.

NOTE: The State of Louisiana does hereby reserve, and this lease shall be subject to, the imprescriptible right of surface use in the nature of a servitude in favor of the Department of Natural Resources, including its Offices and Commissions, for the sole purpose of implementing, constructing, servicing and maintaining approved coastal zone management and/or restoration projects. Utilization of any and all rights derived under this lease by the mineral lessee, its agents, successors or assigns, shall not interfere with nor hinder the reasonable surface use by the Department of Natural Resources, its Offices or Commissions, as herein above reserved.

NOTE: This tract is located in an area designated by the Louisiana Legislature or the Wildlife and Fisheries Commission as a Public Oyster Seed Ground, Reservation, or area of Calcasieu or Sabine Lake. Proposed projects occurring in these areas will be evaluated on a case by case basis by Louisiana Department of Wildlife & Fisheries. Modifications to proposed project features including, but not limited to, access routes, well sites, flowlines, and appurtenant structures maybe required by the Louisiana Department of Wildlife and Fisheries. In addition, compensatory mitigation will be required to offset unavoidable habitat impacts.

Bidder	Cash Payment	Price/ Acre	Rental	Oil	Gas	Other

Applicant: SYNERGY LAND COMPANY, INC.

**Legend**

12060084

Blocks

Active Leases

GULF OF MEXICO

BS0020

PLAQUEMINES PARISH

BS0014

BS0019

BRETON SOUND AREA

BS0030

SL 16823

SL 16610

SL 16443

SL 20433

SL 16610

BS0018

P.O.B.



**TRACT 42729 - Portion of Blocks 17, and 32, Breton Sound Area, Blocks 16, and 21, Main Pass Area, Revised, Plaquemines Parish, Louisiana**

All of the lands now or formerly constituting the beds and bottoms of all water bodies of every nature and description as to which title is vested in the State of Louisiana, together with all islands arising therein and other lands formed by accretion or by reliction, where allowed by law, excepting tax adjudicated lands, and not presently under mineral lease on June 13, 2012, situated in Plaquemines Parish, Louisiana, and more particularly described as follows: Beginning at a point having Coordinates of X = 2,626,300.00 and Y = 342,400.00; thence East 9,050.00 feet to a point on the common block line between Block 16, Main Pass Area, Revised, and Block 17, Breton Sound Area having Coordinates of X = 2,635,350.00 and Y = 342,400.00; thence East 2,350.00 feet to a point having Coordinates of X = 2,637,700.00 and Y = 342,400.00; thence South 5,320.00 feet to a point on the common block line between said Block 17 and Block 32, Breton Sound Area having Coordinates of X = 2,637,700.00 and Y = 337,080.00; thence South 3,000.00 feet to a point on the Northern boundary of State Lease No. 1227, as amended, having Coordinates of X = 2,637,700.00 and Y = 334,080.00; thence West 2,350.00 feet along the Northern boundary of said State Lease No. 1227 to a point on the East boundary of State Lease No. 4708, as amended, having Coordinates of X = 2,635,350.00 and Y = 334,080.00; thence along the boundary of said State Lease No. 4708 the following courses: North 1,100.00 feet to a point having Coordinates of X = 2,635,350.00 and Y = 335,180.00; South 68 degrees 11 minutes 55 seconds West 2,154.07 feet to a point having Coordinates of X = 2,633,350.00 and Y = 334,380.00; South 63 degrees 26 minutes 06 seconds West 1,118.03 feet to a point having Coordinates of X = 2,632,350.00 and Y = 333,880.00; South 57 degrees 59 minutes 41 seconds West 943.40 feet to a point having Coordinates of X = 2,631,550.00 and Y = 333,380.00; South 45 degrees 00 minutes 00 seconds West 707.11 feet to a point having Coordinates of X = 2,631,050.00 and Y = 332,880.00; South 30 degrees 57 minutes 50 seconds West 583.10 feet to a point having Coordinates of X = 2,630,750.00 and Y = 332,380.00; South 21 degrees 48 minutes 05 seconds West 538.52 feet to a point having Coordinates of X = 2,630,549.99 and Y = 331,879.99 and South 366.94 feet to the Northeast corner of State Lease No. 15536, as amended, having Coordinates of X = 2,630,549.99 and Y = 331,513.05; thence along the boundary of said State Lease No. 15536 the following courses: West 1,672.99 feet to a point having Coordinates of X = 2,628,877.00 and Y = 331,513.05 and South 1,013.05 feet to a point having Coordinates of X = 2,628,877.00 and Y = 330,500.00; thence West 2,577.00 feet to a point having Coordinates of X = 2,626,300.00 and Y = 330,500.00; thence North 6,580.00 feet to a point on the common block line between Block 21, Main Pass Area, Revised, and said Block 16 having Coordinates of X = 2,626,300.00 and Y = 337,080.00; thence North 5,320.00 feet to the point of beginning, containing approximately **2,492.61 acres**, all as more particularly outlined on a plat on file in the Office of Mineral Resources, Department of Natural Resources. All bearings, distances and coordinates are based on Louisiana Coordinate System of 1927, (North or South Zone), where applicable.

NOTE: The above description of the Tract nominated for lease has been provided and corrected, where required, exclusively by the nomination party. Any mineral lease selected from this Tract and awarded by the Louisiana State Mineral and Energy Board shall be without warranty of any kind, either express, implied, or statutory, including, but not limited to, the implied warranties of merchantability and fitness for a particular purpose. Should the mineral lease awarded by the Louisiana State Mineral and Energy Board be subsequently modified, cancelled or abrogated due to the existence of conflicting leases, operating agreements, private claims or other future obligations or conditions which may affect all or any portion of the leased Tract, it shall not relieve the Lessee of the obligation to pay any bonus due thereon to the Louisiana State Mineral and Energy Board, nor shall the Louisiana State Mineral and Energy Board be obligated to refund any consideration paid by the Lessor prior to such modification, cancellation, or abrogation, including, but not limited to, bonuses, rentals and royalties.

NOTE: The State of Louisiana does hereby reserve, and this lease shall be subject to, the imprescriptible right of surface use in the nature of a servitude in favor of the Department of Natural Resources, including its Offices and Commissions, for the sole purpose of implementing, constructing, servicing and maintaining approved coastal zone management and/or restoration projects. Utilization of any and all rights derived under this lease by the mineral lessee, its agents, successors or assigns, shall not interfere with nor hinder the reasonable surface use by the Department of Natural Resources, its Offices or Commissions, as herein above reserved.

NOTE: This tract is located in an area designated by the Louisiana Legislature or the Wildlife and Fisheries Commission as a Public Oyster Seed Ground, Reservation, or area of Calcasieu or Sabine Lake. Proposed projects occurring in these areas will be evaluated on a case by case basis by Louisiana Department of Wildlife & Fisheries. Modifications to proposed project features including, but not limited to, access routes, well sites, flowlines, and appurtenant structures maybe required by the Louisiana Department of Wildlife and Fisheries. In addition, compensatory mitigation will be required to offset unavoidable habitat impacts.

Applicant: SYNERGY LAND COMPANY, INC.

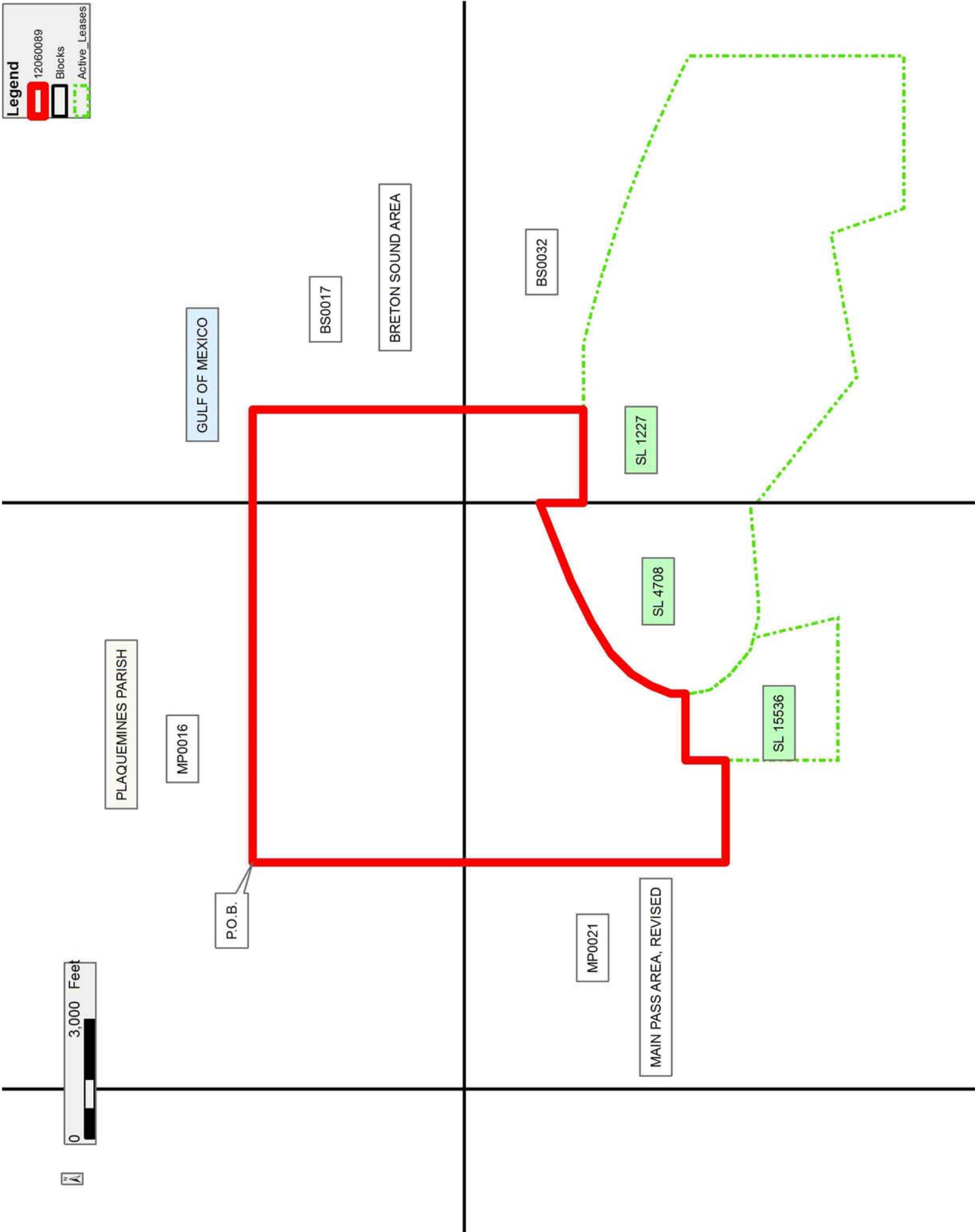
Bidder	Cash Payment	Price/ Acre	Rental	Oil	Gas	Other

**Legend**

12060089

Blocks

Active Leases





**TRACT 42730 - Portion of Blocks 20, 29, and 30, Breton Sound Area, Plaquemines Parish, Louisiana**

All of the lands now or formerly constituting the beds and bottoms of all water bodies of every nature and description as to which title is vested in the State of Louisiana, together with all islands arising therein and other lands formed by accretion or by reliction, where allowed by law, excepting tax adjudicated lands, and not presently under mineral lease on June 13, 2012, situated in Plaquemines Parish, Louisiana, and more particularly described as follows: Beginning at the Northwest corner of State Lease No. 1997, as amended, having Coordinates of X = 2,686,950.00 and Y = 340,767.50; thence along the boundary of said State Lease No. 1997 the following courses: South 3,687.50 feet to a point having Coordinates of X = 2,686,950.00 and Y = 337,080.00 and North 89 degrees 59 minutes 54 seconds East 25.00 feet to the Northernmost Northwest corner of State Lease No. 2000, as amended, having Coordinates of X = 2,686,975.00 and Y = 337,080.00; thence along the boundary of said State Lease No. 2000 the following courses: South 7,375.00 feet to a point having Coordinates of X = 2,686,975.00 and Y = 329,705.00; West 4,375.00 feet to a point having Coordinates of X = 2,682,600.00 and Y = 329,705.00; South 3,000.00 feet to a point having Coordinates of X = 2,682,600.00 and Y = 326,705.00 and West 3,000.00 feet to a point on the common block line between Block 29, Breton Sound Area and Block 30, Breton Sound Area having Coordinates of X = 2,679,600.00 and Y = 326,705.00; thence North 65 degrees 04 minutes 01 seconds West 3,418.61 feet to a point having Coordinates of X = 2,676,500.00 and Y = 328,146.15; thence North 8,933.85 feet to a point on the North line of said Block 30 having Coordinates of X = 2,676,500.00 and Y = 337,080.00; thence East 3,100.00 feet along the North line of said Block 30 to the common corner between Block 20, Breton Sound Area, said Block 29 and said Block 30 having Coordinates of X = 2,679,600.00 and Y = 337,080.00; thence East 2,810.00 feet along the common boundary line between said Block 29 and said Block 20 to a point having Coordinates of X = 2,682,410.00 and Y = 337,080.00; thence North 1,600.00 feet to a point having Coordinates of X = 2,682,410.00 and Y = 338,680.00; thence North 38 degrees 59 minutes 37 seconds East 2,685.80 feet to a point having Coordinates of X = 2,684,100.00 and Y = 340,767.44; thence North 89 degrees 59 minutes 56 seconds East 2,850.00 feet to the point of beginning, containing approximately **2,486.15 acres**, all as more particularly outlined on a plat on file in the Office of Mineral Resources, Department of Natural Resources. All bearings, distances and coordinates are based on Louisiana Coordinate System of 1927, (North or South Zone), where applicable.

NOTE: The above description of the Tract nominated for lease has been provided and corrected, where required, exclusively by the nomination party. Any mineral lease selected from this Tract and awarded by the Louisiana State Mineral and Energy Board shall be without warranty of any kind, either express, implied, or statutory, including, but not limited to, the implied warranties of merchantability and fitness for a particular purpose. Should the mineral lease awarded by the Louisiana State Mineral

and Energy Board be subsequently modified, cancelled or abrogated due to the existence of conflicting leases, operating agreements, private claims or other future obligations or conditions which may affect all or any portion of the leased Tract, it shall not relieve the Lessee of the obligation to pay any bonus due thereon to the Louisiana State Mineral and Energy Board, nor shall the Louisiana State Mineral and Energy Board be obligated to refund any consideration paid by the Lessor prior to such modification, cancellation, or abrogation, including, but not limited to, bonuses, rentals and royalties.

NOTE: The State of Louisiana does hereby reserve, and this lease shall be subject to, the imprescriptible right of surface use in the nature of a servitude in favor of the Department of Natural Resources, including its Offices and Commissions, for the sole purpose of implementing, constructing, servicing and maintaining approved coastal zone management and/or restoration projects. Utilization of any and all rights derived under this lease by the mineral lessee, its agents, successors or assigns, shall not interfere with nor hinder the reasonable surface use by the Department of Natural Resources, its Offices or Commissions, as herein above reserved.

NOTE: It appears, according to our records, that a portion of this Tract is located within the restrictive safety fairway area as set out by the Corps of Engineers, U.S. Army and/or the restrictive anchorage area as set out by the U.S. Coast Guard.

NOTE: This tract is located in an area designated by the Louisiana Legislature or the Wildlife and Fisheries Commission as a Public Oyster Seed Ground, Reservation, or area of Calcasieu or Sabine Lake. Proposed projects occurring in these areas will be evaluated on a case by case basis by Louisiana Department of Wildlife & Fisheries. Modifications to proposed project features including, but not limited to, access routes, well sites, flowlines, and appurtenant structures maybe required by the Louisiana Department of Wildlife and Fisheries. In addition, compensatory mitigation will be required to offset unavoidable habitat impacts.

Applicant: SYNERGY LAND COMPANY, INC.

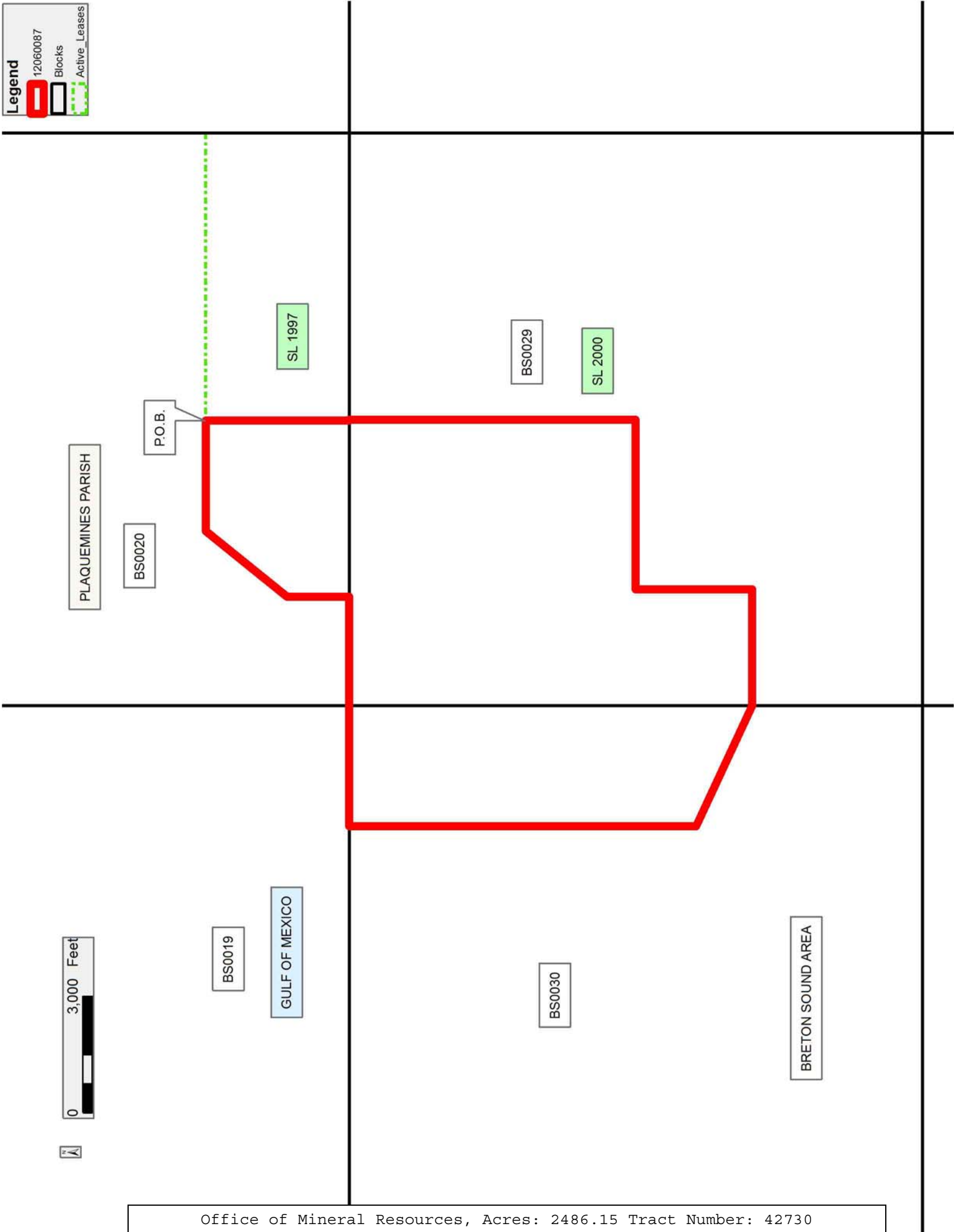
Bidder	Cash Payment	Price/ Acre	Rental	Oil	Gas	Other

Legend

12060087

Blocks

Active Leases



**TRACT 42731 - Portion of Blocks 30, and 31, Breton Sound Area, Plaquemines Parish, Louisiana**

All of the lands now or formerly constituting the beds and bottoms of all water bodies of every nature and description as to which title is vested in the State of Louisiana, together with all islands arising therein and other lands formed by accretion or by reliction, where allowed by law, excepting tax adjudicated lands, and not presently under mineral lease on June 13, 2012, situated in Plaquemines Parish, Louisiana, and more particularly described as follows: Beginning at a point on the North line of Block 31, Breton Sound Area, having Coordinates of X = 2,653,600.00 and Y = 337,080.00; thence East 11,250.00 feet along the North line of said Block 31 to its Northeast corner, also being the Northwest corner of Block 30, Breton Sound Area, having Coordinates of X = 2,664,850.00 and Y = 337,080.00; thence East 3,450.00 feet along the North line of said Block 30 to a point having Coordinates of X = 2,668,300.00 and Y = 337,080.00; thence South 7,380.00 feet to a point having Coordinates of X = 2,668,300.00 and Y = 329,700.00; thence West 3,450.00 feet to a point on the common block line between said Block 30 and said Block 31 having Coordinates of X = 2,664,850.00 and Y = 329,700.00; thence West 11,250.00 feet to a point having Coordinates of X = 2,653,600.00 and Y = 329,700.00; thence North 7,380.00 feet to the point of beginning, containing approximately **2,490.50 acres**, all as more particularly outlined on a plat on file in the Office of Mineral Resources, Department of Natural Resources. All bearings, distances and coordinates are based on Louisiana Coordinate System of 1927, (North or South Zone), where applicable.

NOTE: The above description of the Tract nominated for lease has been provided and corrected, where required, exclusively by the nomination party. Any mineral lease selected from this Tract and awarded by the Louisiana State Mineral and Energy Board shall be without warranty of any kind, either express, implied, or statutory, including, but not limited to, the implied warranties of merchantability and fitness for a particular purpose. Should the mineral lease awarded by the Louisiana State Mineral and Energy Board be subsequently modified, cancelled or abrogated due to the existence of conflicting leases, operating agreements, private claims or other future obligations or conditions which may affect all or any portion of the leased Tract, it shall not relieve the Lessee of the obligation to pay any bonus due thereon to the Louisiana State Mineral and Energy Board, nor shall the Louisiana State Mineral and Energy Board be obligated to refund any consideration paid by the Lessor prior to such modification, cancellation, or abrogation, including, but not limited to, bonuses, rentals and royalties.

NOTE: The State of Louisiana does hereby reserve, and this lease shall be subject to, the imprescriptible right of surface use in the nature of a servitude in favor of the Department of Natural Resources, including its Offices and Commissions, for the sole purpose of implementing, constructing, servicing and maintaining approved coastal zone management and/or restoration projects. Utilization of any and all rights derived

under this lease by the mineral lessee, its agents, successors or assigns, shall not interfere with nor hinder the reasonable surface use by the Department of Natural Resources, its Offices or Commissions, as herein above reserved.

NOTE: It appears, according to our records, that a portion of this Tract is located within the restrictive safety fairway area as set out by the Corps of Engineers, U.S. Army and/or the restrictive anchorage area as set out by the U.S. Coast Guard.

NOTE: This tract is located in an area designated by the Louisiana Legislature or the Wildlife and Fisheries Commission as a Public Oyster Seed Ground, Reservation, or area of Calcasieu or Sabine Lake. Proposed projects occurring in these areas will be evaluated on a case by case basis by Louisiana Department of Wildlife & Fisheries. Modifications to proposed project features including, but not limited to, access routes, well sites, flowlines, and appurtenant structures maybe required by the Louisiana Department of Wildlife and Fisheries. In addition, compensatory mitigation will be required to offset unavoidable habitat impacts.

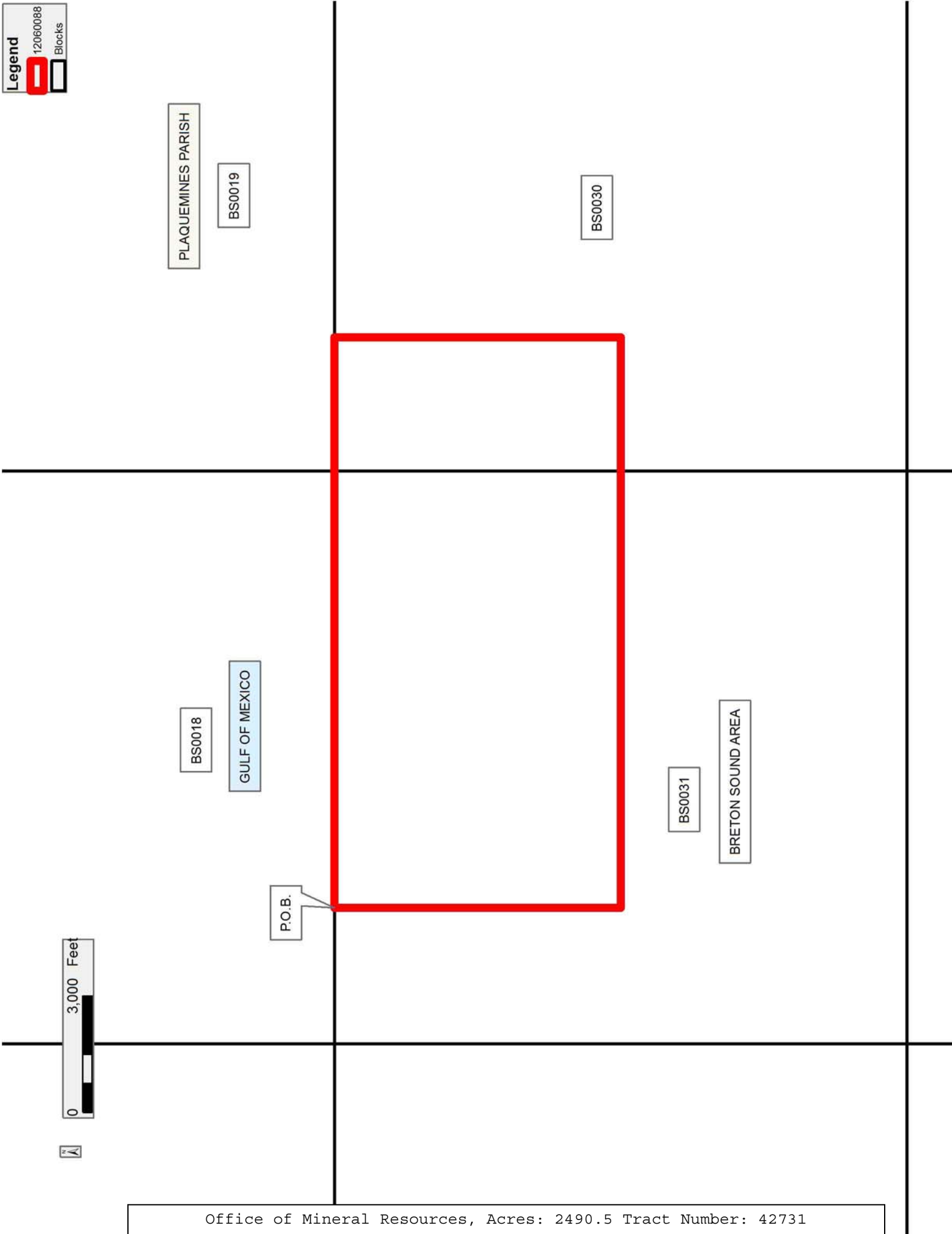
Applicant: SYNERGY LAND COMPANY, INC.

Bidder	Cash Payment	Price/ Acre	Rental	Oil	Gas	Other

Legend

12060088

Blocks



**TRACT 42732 - Portion of Blocks 21, and 26, Main Pass Area, Revised, Plaquemines Parish, Louisiana**

All of the lands now or formerly constituting the beds and bottoms of all water bodies of every nature and description as to which title is vested in the State of Louisiana, together with all islands arising therein and other lands formed by accretion or by reliction, where allowed by law, excepting tax adjudicated lands, and not presently under mineral lease on June 13, 2012, situated in Plaquemines Parish, Louisiana, and more particularly described as follows: Beginning at a point having Coordinates of X = 2,627,600.00 and Y = 330,500.00; thence East 1,277.00 feet to a point on the West boundary of State Lease No. 15536, as amended, having Coordinates of X = 2,628,877.00 and Y = 330,500.00; thence along the boundary of said State Lease No. 15536 the following courses: South 2,822.00 feet to a point having Coordinates of X = 2,628,877.00 and Y = 327,678.00; East 3,591.01 feet to a point having Coordinates of X = 2,632,468.01 and Y = 327,678.00 and North 13 degrees 38 minutes 58 seconds West 2,188.40 feet to a point on the Southern boundary of State Lease No. 4708, as amended, having Coordinates of X = 2,631,951.59 and Y = 329,804.60; thence along the boundary of said State Lease No. 4708 the following courses: South 75 degrees 57 minutes 50 seconds East 513.73 feet to a point having Coordinates of X = 2,632,449.98 and Y = 329,680.00; East 500.00 feet to a point having Coordinates of X = 2,632,949.98 and Y = 329,680.00 and North 85 degrees 14 minutes 11 seconds East 2,408.32 feet to a point on the West boundary of State Lease No. 1227, as amended, said point also being located on the East line of Block 21, Main Pass Area, Revised, having Coordinates of X = 2,635,350.00 and Y = 329,880.00; thence South 160.85 feet along the West boundary of said State Lease No. 1227 to its Westernmost Southwest corner having Coordinates of X = 2,635,350.00 and Y = 329,719.15; thence South 7,389.15 feet along the East line of said Block 21 to its Southeast corner, also being the Northeast corner of Block 26, Main Pass Area, Revised, having Coordinates of X = 2,635,350.00 and Y = 322,330.00; thence South 3,481.49 feet along the East line of said Block 26 to a point on the North boundary of State Lease No. 20101 having Coordinates of X = 2,635,350.00 and Y = 318,848.51; thence along the boundary of said State Lease No. 20101 the following courses: West 90.16 feet to a point having Coordinates of X = 2,635,259.84 and Y = 318,848.51; South 1,320.00 feet to a point having Coordinates of X = 2,635,259.84 and Y = 317,528.51 and East 90.16 feet to a point on the East line of said Block 26 having Coordinates of X = 2,635,350.00 and Y = 317,528.51; thence South 2,573.51 feet along the East line of said Block 26 to a point having Coordinates of X = 2,635,350.00 and Y = 314,955.00; thence West 7,750.00 feet to a point having Coordinates of X = 2,627,600.00 and Y = 314,955.00; thence North 7,375.00 feet to a point on the common block line between said Block 26 and said Block 21 having Coordinates of X = 2,627,600.00 and Y = 322,330.00; thence North 8,170.00 feet to the point of beginning, **LESS AND EXCEPT** all of State Lease No. 16935 located entirely within the above described tract, said State Lease No. 16935 being more fully described as follows: Beginning at a point having Coordinates of X = 2,630,883.00 and Y = 321,820.00; thence East 2,187.00 feet to a point having Coordinates of X

= 2,633,070.00 and Y = 321,820.00; thence South 2,148.00 feet to a point having Coordinates of X = 2,633,070.00 and Y = 319,672.00; thence West 2,187.00 feet to a point having Coordinates of X = 2,630,883.00 and Y = 319,672.00 and North 2,148.00 feet to the point of beginning, the above described nominated tract containing approximately **2,385.58 acres**, all as more particularly outlined on a plat on file in the Office of Mineral Resources, Department of Natural Resources. All bearings, distances and coordinates are based on Louisiana Coordinate System of 1927, (North or South Zone), where applicable.

NOTE: The above description of the Tract nominated for lease has been provided and corrected, where required, exclusively by the nomination party. Any mineral lease selected from this Tract and awarded by the Louisiana State Mineral and Energy Board shall be without warranty of any kind, either express, implied, or statutory, including, but not limited to, the implied warranties of merchantability and fitness for a particular purpose. Should the mineral lease awarded by the Louisiana State Mineral and Energy Board be subsequently modified, cancelled or abrogated due to the existence of conflicting leases, operating agreements, private claims or other future obligations or conditions which may affect all or any portion of the leased Tract, it shall not relieve the Lessee of the obligation to pay any bonus due thereon to the Louisiana State Mineral and Energy Board, nor shall the Louisiana State Mineral and Energy Board be obligated to refund any consideration paid by the Lessor prior to such modification, cancellation, or abrogation, including, but not limited to, bonuses, rentals and royalties.

NOTE: The State of Louisiana does hereby reserve, and this lease shall be subject to, the imprescriptible right of surface use in the nature of a servitude in favor of the Department of Natural Resources, including its Offices and Commissions, for the sole purpose of implementing, constructing, servicing and maintaining approved coastal zone management and/or restoration projects. Utilization of any and all rights derived under this lease by the mineral lessee, its agents, successors or assigns, shall not interfere with nor hinder the reasonable surface use by the Department of Natural Resources, its Offices or Commissions, as herein above reserved.

NOTE: This tract is located in an area designated by the Louisiana Legislature or the Wildlife and Fisheries Commission as a Public Oyster Seed Ground, Reservation, or area of Calcasieu or Sabine Lake. Proposed projects occurring in these areas will be evaluated on a case by case basis by Louisiana Department of Wildlife & Fisheries. Modifications to proposed project features including, but not limited to, access routes, well sites, flowlines, and appurtenant structures maybe required by the Louisiana Department of Wildlife and Fisheries. In addition, compensatory mitigation will be required to offset unavoidable habitat impacts.



Applicant: SYNERGY LAND COMPANY, INC.

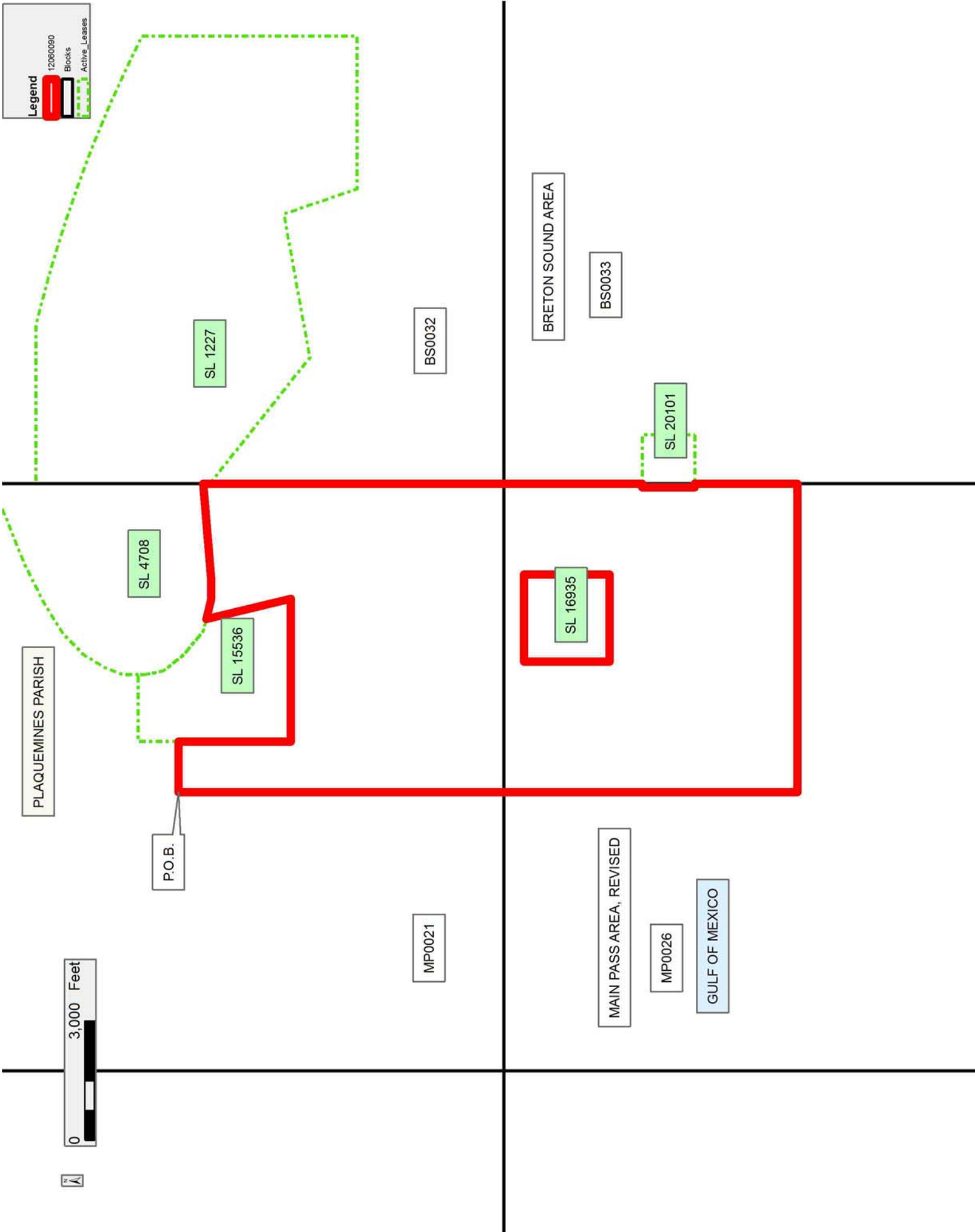
Bidder	Cash Payment	Price/ Acre	Rental	Oil	Gas	Other

**Legend**

12060090

Blocks

Active Leases



**TRACT 42733 - Portion of Blocks 32, and 33, Breton Sound Area, Plaquemines Parish, Louisiana**

All of the lands now or formerly constituting the beds and bottoms of all water bodies of every nature and description as to which title is vested in the State of Louisiana, together with all islands arising therein and other lands formed by accretion or by reliction, where allowed by law, excepting tax adjudicated lands, and not presently under mineral lease on June 13, 2012, situated in Plaquemines Parish, Louisiana, and more particularly described as follows: Beginning at a point having Coordinates of X = 2,647,100.00 and Y = 326,017.50; thence South 3,687.50 feet to a point on the common block line between Block 32, Breton Sound Area and Block 33, Breton Sound Area, having Coordinates of X = 2,647,100.00 and Y = 322,330.00; thence South 4,212.00 feet to a point having Coordinates of X = 2,647,100.00 and Y = 318,118.00; thence West 7,984.00 feet to a point on the Northern boundary of State Lease No. 18078 having Coordinates of X = 2,639,116.00 and Y = 318,118.00; thence along the boundary of said State Lease No. 18078 the following courses: North 39 degrees 52 minutes 04 seconds West 844.35 feet to a point having Coordinates of X = 2,638,574.76 and Y = 318,766.06 and South 50 degrees 07 minutes 58 seconds West 4,201.48 feet to a point on the West line of said Block 33 having Coordinates of X = 2,635,350.00 and Y = 316,072.86; thence North 1,455.65 feet to a point on the South boundary of State Lease No. 20101 having Coordinates of X = 2,635,350.00 and Y = 317,528.51; thence along the boundary of said State Lease No. 20101 the following courses: East 1,229.84 feet to a point having Coordinates of X = 2,636,579.84 and Y = 317,528.51; North 1,320.00 feet to a point having Coordinates of X = 2,636,579.84 and Y = 318,848.51 and West 1,229.84 feet to a point on the West line of said Block 33 having Coordinates of X = 2,635,350.00 and Y = 318,848.51; thence North 3,481.49 feet along the West line of said Block 33 to its Northwest corner, also being the Southwest corner of said Block 32 having Coordinates of X = 2,635,350.00 and Y = 322,330.00; thence North 7,389.15 feet along the West line of said Block 32 to the Southwest corner of State Lease No. 1227, as amended, having Coordinates of X = 2,635,350.00 and Y = 329,719.15; thence along the boundary of said State Lease No. 1227 the following courses: South 51 degrees 38 minutes 28 seconds East 4,053.17 feet to a point having Coordinates of X = 2,638,528.25 and Y = 327,203.82; North 79 degrees 45 minutes 24 seconds East 3,665.48 feet to a point having Coordinates of X = 2,642,135.31 and Y = 327,855.65; South 18 degrees 56 minutes 08 seconds East 1,943.31 feet to a point having Coordinates of X = 2,642,765.92 and Y = 326,017.50 and East 3,834.08 feet to its Southeast corner having Coordinates of X = 2,646,600.00 and Y = 326,017.50; thence East 500.00 feet to the point of beginning, containing approximately **2,458.10 acres**, all as more particularly outlined on a plat on file in the Office of Mineral Resources, Department of Natural Resources. All bearings, distances and coordinates are based on Louisiana Coordinate System of 1927, (North or South Zone), where applicable.

NOTE: The above description of the Tract nominated for lease has been provided and corrected, where required, exclusively by the nomination party. Any mineral lease selected from this Tract and awarded by the Louisiana State Mineral and Energy Board shall be without warranty of any kind, either express, implied, or statutory, including, but not limited to, the implied warranties of merchantability and fitness for a particular purpose. Should the mineral lease awarded by the Louisiana State Mineral and Energy Board be subsequently modified, cancelled or abrogated due to the existence of conflicting leases, operating agreements, private claims or other future obligations or conditions which may affect all or any portion of the leased Tract, it shall not relieve the Lessee of the obligation to pay any bonus due thereon to the Louisiana State Mineral and Energy Board, nor shall the Louisiana State Mineral and Energy Board be obligated to refund any consideration paid by the Lessor prior to such modification, cancellation, or abrogation, including, but not limited to, bonuses, rentals and royalties.

NOTE: The State of Louisiana does hereby reserve, and this lease shall be subject to, the imprescriptible right of surface use in the nature of a servitude in favor of the Department of Natural Resources, including its Offices and Commissions, for the sole purpose of implementing, constructing, servicing and maintaining approved coastal zone management and/or restoration projects. Utilization of any and all rights derived under this lease by the mineral lessee, its agents, successors or assigns, shall not interfere with nor hinder the reasonable surface use by the Department of Natural Resources, its Offices or Commissions, as herein above reserved.

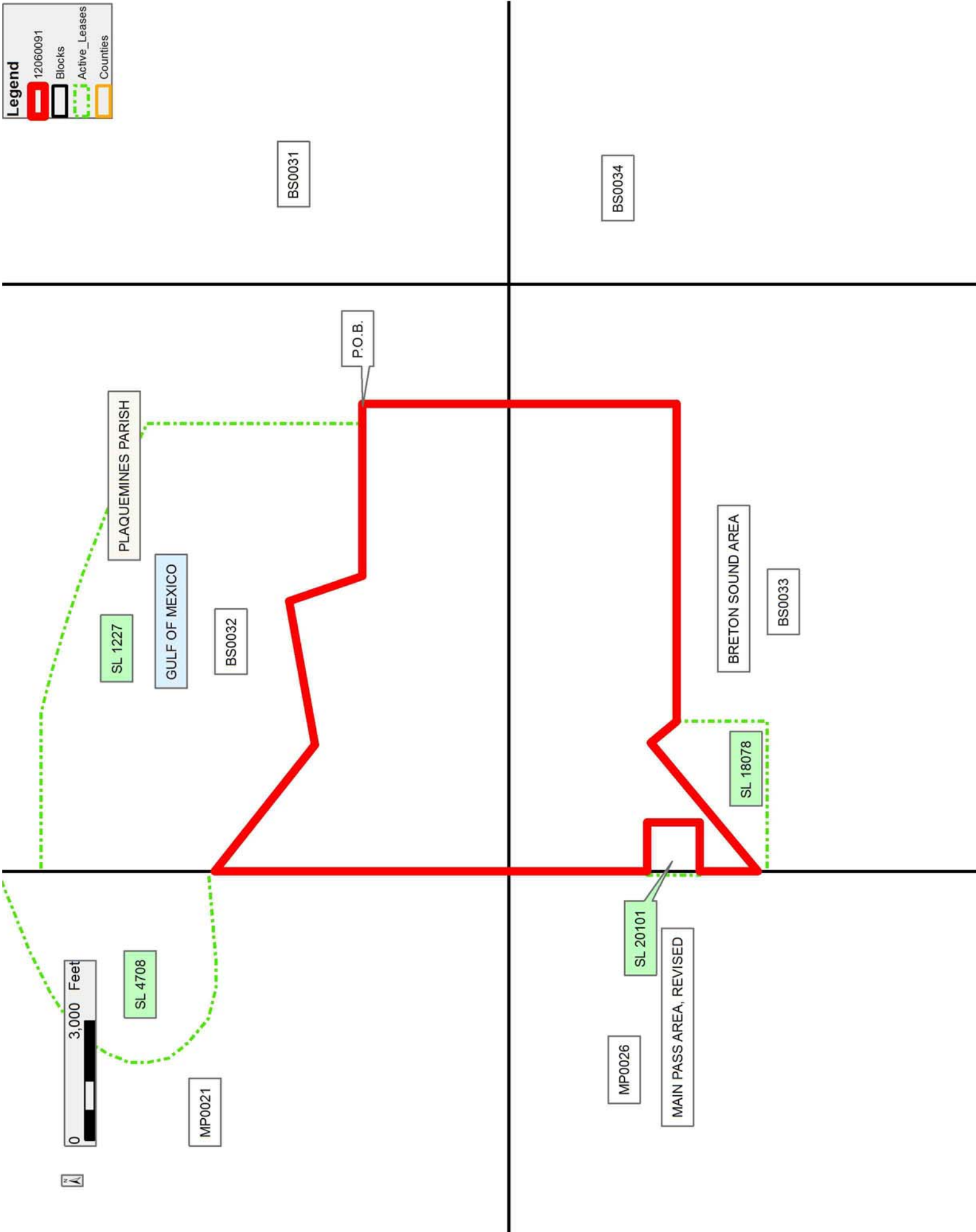
NOTE: This tract is located in an area designated by the Louisiana Legislature or the Wildlife and Fisheries Commission as a Public Oyster Seed Ground, Reservation, or area of Calcasieu or Sabine Lake. Proposed projects occurring in these areas will be evaluated on a case by case basis by Louisiana Department of Wildlife & Fisheries. Modifications to proposed project features including, but not limited to, access routes, well sites, flowlines, and appurtenant structures maybe required by the Louisiana Department of Wildlife and Fisheries. In addition, compensatory mitigation will be required to offset unavoidable habitat impacts.

Bidder	Cash Payment	Price/ Acre	Rental	Oil	Gas	Other

Applicant: SYNERGY LAND COMPANY, INC.

**Legend**

- 12060091
- Blocks
- Active\_Leases
- Counties



**TRACT 42734 - Portion of Blocks 34, and 35, Breton Sound Area, Plaquemines Parish, Louisiana**

All of the lands now or formerly constituting the beds and bottoms of all water bodies of every nature and description as to which title is vested in the State of Louisiana, together with all islands arising therein and other lands formed by accretion or by reliction, where allowed by law, excepting tax adjudicated lands, and not presently under mineral lease on June 13, 2012, situated in Plaquemines Parish, Louisiana, and more particularly described as follows: Beginning at a point on the North line of Block 35, Breton Sound Area having Coordinates of X = 2,670,000.00 and Y = 322,330.00; thence South 10,230.00 feet to a point having Coordinates of X = 2,670,000.00 and Y = 312,100.00; thence West 5,150.00 feet to a point on the common block line of said Block 35 and Block 34, Breton Sound Area having Coordinates of X = 2,664,850.00 and Y = 312,100.00; thence West 4,616.45 feet to a point on the East boundary of State Lease No. 17767, as amended, having Coordinates of X = 2,660,233.55 and Y = 312,100.00; thence along the boundary of said State Lease No. 17767 the following courses: North 3,736.48 feet to a point having Coordinates of X = 2,660,233.55 and Y = 315,836.48; North 1,379.06 feet to a point having Coordinates of X = 2,660,233.55 and Y = 317,215.54 and West 1,483.55 feet to the Northeast corner of State Lease No. 14217, as amended, having Coordinates of X = 2,658,750.00 and Y = 317,215.54; thence West 680.76 feet along the North boundary of said State Lease No. 14217 to a point having Coordinates of X = 2,658,069.24 and Y = 317,215.54; thence North 47 degrees 11 minutes 32 seconds West 3,111.60 feet to a point on the South boundary of State Lease No. 4458, as amended, having Coordinates of X = 2,655,786.45 and Y = 319,330.00; thence East 1,688.55 feet along the South boundary of said State Lease No. 4458 to the Southwest corner of State Lease No. 5049, as amended, having Coordinates of X = 2,657,475.00 and Y = 319,330.00; thence along the boundary of said State Lease No. 5049 the following courses: East 1,500.00 feet to a point having Coordinates of X = 2,658,975.00 and Y = 319,330.00 and North 29 degrees 32 minutes 20 seconds East 3,448.19 feet to a point on the North line of said Block 34 having Coordinates of X = 2,660,675.01 and Y = 322,330.00; thence East 4,174.99 feet along the North line of said Block 34 to its Northeast corner, also being the Northwest corner of said Block 35 having Coordinates of X = 2,664,850.00 and Y = 322,330.00; thence East 5,150.00 feet along the North line of said Block 35 to the point of beginning, containing approximately **2,482.24 acres**, all as more particularly outlined on a plat on file in the Office of Mineral Resources, Department of Natural Resources. All bearings, distances and coordinates are based on Louisiana Coordinate System of 1927, (North or South Zone), where applicable.

NOTE: The above description of the Tract nominated for lease has been provided and corrected, where required, exclusively by the nomination party. Any mineral lease selected from this Tract and awarded by the Louisiana State Mineral and Energy Board shall be without warranty of any kind, either express, implied, or statutory, including, but not limited to, the implied warranties of merchantability and fitness for a particular

purpose. Should the mineral lease awarded by the Louisiana State Mineral and Energy Board be subsequently modified, cancelled or abrogated due to the existence of conflicting leases, operating agreements, private claims or other future obligations or conditions which may affect all or any portion of the leased Tract, it shall not relieve the Lessee of the obligation to pay any bonus due thereon to the Louisiana State Mineral and Energy Board, nor shall the Louisiana State Mineral and Energy Board be obligated to refund any consideration paid by the Lessor prior to such modification, cancellation, or abrogation, including, but not limited to, bonuses, rentals and royalties.

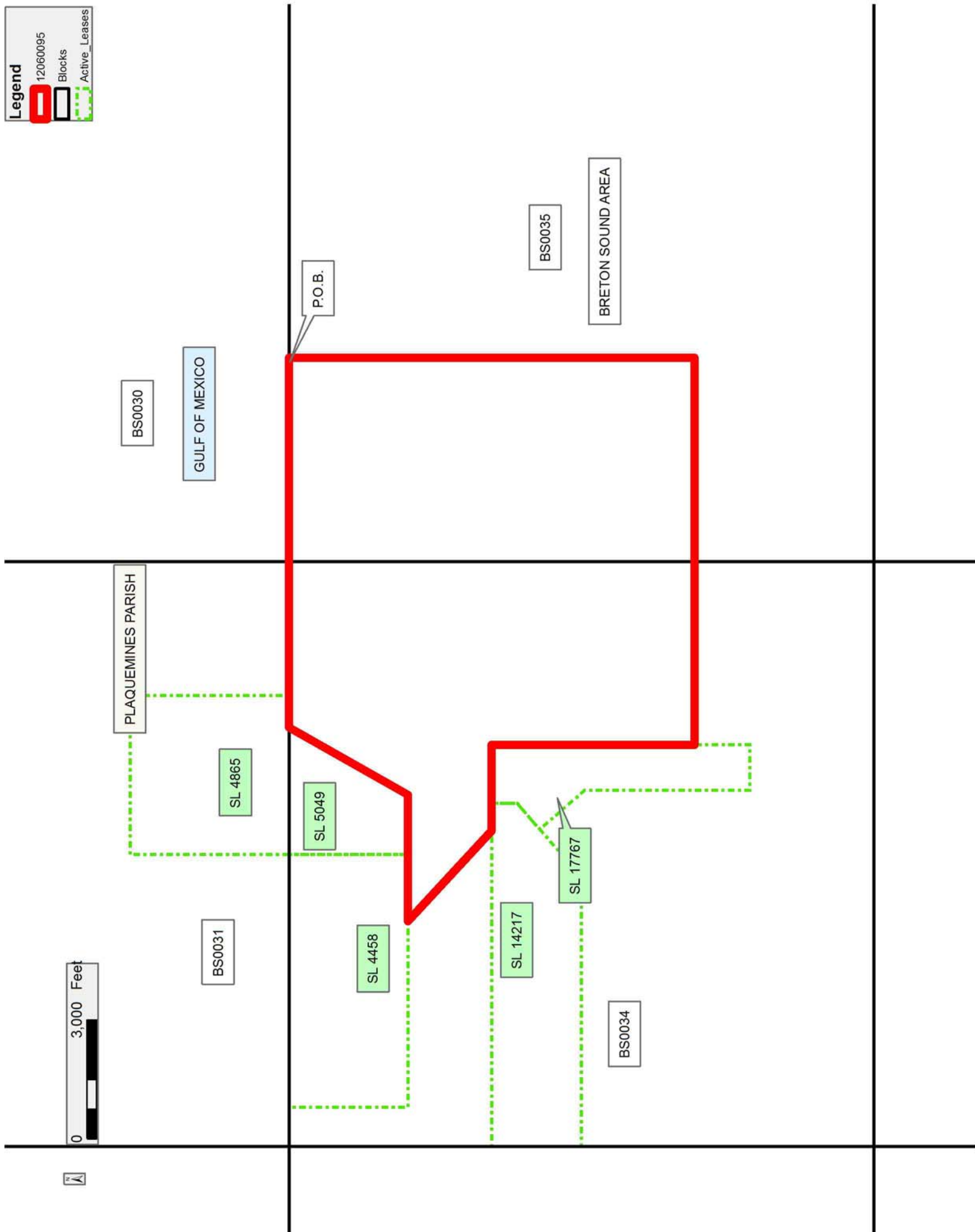
NOTE: The State of Louisiana does hereby reserve, and this lease shall be subject to, the imprescriptible right of surface use in the nature of a servitude in favor of the Department of Natural Resources, including its Offices and Commissions, for the sole purpose of implementing, constructing, servicing and maintaining approved coastal zone management and/or restoration projects. Utilization of any and all rights derived under this lease by the mineral lessee, its agents, successors or assigns, shall not interfere with nor hinder the reasonable surface use by the Department of Natural Resources, its Offices or Commissions, as herein above reserved.

NOTE: This tract is located in an area designated by the Louisiana Legislature or the Wildlife and Fisheries Commission as a Public Oyster Seed Ground, Reservation, or area of Calcasieu or Sabine Lake. Proposed projects occurring in these areas will be evaluated on a case by case basis by Louisiana Department of Wildlife & Fisheries. Modifications to proposed project features including, but not limited to, access routes, well sites, flowlines, and appurtenant structures maybe required by the Louisiana Department of Wildlife and Fisheries. In addition, compensatory mitigation will be required to offset unavoidable habitat impacts.

Applicant: SYNERGY LAND COMPANY, INC.

Bidder	Cash Payment	Price/Acre	Rental	Oil	Gas	Other





Office of Mineral Resources, Acres: 2482.24 Tract Number: 42734

**TRACT 42735 - Portion of Blocks 33, 34, 47, and 48, Breton Sound Area, Plaquemines Parish, Louisiana**

All of the lands now or formerly constituting the beds and bottoms of all water bodies of every nature and description as to which title is vested in the State of Louisiana, together with all islands arising therein and other lands formed by accretion or by reliction, where allowed by law, excepting tax adjudicated lands, and not presently under mineral lease on June 13, 2012, situated in Plaquemines Parish, Louisiana, and more particularly described as follows: Beginning at a point having Coordinates of X = 2,647,100.00 and Y = 318,850.00; thence East 1,050.00 feet to a point having Coordinates of X = 2,648,150.00 and Y = 318,850.00; thence North 1,050.00 feet to a point having Coordinates of X = 2,648,150.00 and Y = 319,900.00; thence East 1,950.00 feet to a point on the common block line between Block 33, Breton Sound Area and Block 34, Breton Sound Area having Coordinates of X = 2,650,100.00 and Y = 319,900.00; thence East 998.32 feet to a point on the West boundary of State Lease No. 4458, as amended, having Coordinates of X = 2,651,098.32 and Y = 319,900.00; thence along the boundary of said State Lease No. 4458 the following courses: South 00 degrees 02 minutes 21 seconds East 570.00 feet to a point having Coordinates of X = 2,651,098.71 and Y = 319,330.00 and East 4,687.74 feet to a point having Coordinates of X = 2,655,786.45 and Y = 319,330.00; thence South 47 degrees 11 minutes 32 seconds East 3,111.60 feet to a point on the North boundary of State Lease No. 14217, as amended, having Coordinates of X = 2,658,069.24 and Y = 317,215.54; thence along the boundary of said State Lease No. 14217 the following courses: West 7,969.24 feet to a point having Coordinates of X = 2,650,100.00 and Y = 317,215.54 and South 2,260.54 feet to the Northwest corner of State Lease No. 14216, as amended, having Coordinates of X = 2,650,100.00 and Y = 314,955.00; thence South 139.46 feet along the West boundary of said State Lease No. 14216 to the Northeast corner of State Lease No. 16298, as amended, having Coordinates of X = 2,650,100.00 and Y = 314,815.54; thence along the boundary of said State Lease No. 16298 the following courses: West 1,022.05 feet to a point having Coordinates of X = 2,649,077.95 and Y = 314,815.54 and South 2,035.54 feet to a point on the North boundary of State Lease No. 16795, as amended, having Coordinates of X = 2,649,077.95 and Y = 312,780.00; thence along the boundary of said State Lease No. 16795 the following courses: West 927.95 feet to a point having Coordinates of X = 2,648,150.00 and Y = 312,780.00; South 4,204.21 feet to a point having Coordinates of X = 2,648,150.00 and Y = 308,575.79 and East 1,950.00 feet to the Southwest corner of State Lease No. 14560, as amended, having Coordinates of X = 2,650,100.00 and Y = 308,575.79; thence along the boundary of said State Lease No. 14560 the following courses: East 4,590.00 feet to a point having Coordinates of X = 2,654,690.00 and Y = 308,575.79 and North 2,691.17 feet to the Southeast corner of said State Lease No. 14216 having Coordinates of X = 2,654,690.00 and Y = 311,266.96; thence along the boundary of said State Lease No. 14216 the following courses: North 1,750.54 feet to a point having Coordinates of X = 2,654,690.00 and Y = 313,017.50 and North 48 degrees 50 minutes 59 seconds East 2,944.37 feet to a point on the Western boundary of State Lease No.

17965, as amended, having Coordinates of X = 2,656,907.07 and Y = 314,955.00; thence South 21 degrees 00 minutes 16 seconds East 4,552.50 feet along the Western boundary of said State Lease No. 17965 to its Southwest corner having Coordinates of X = 2,658,538.87 and Y = 310,705.00; thence South 3,125.00 feet to a point on the common block line between said Block 34 and Block 47, Breton Sound Area, Revised having Coordinates of X = 2,658,538.87 and Y = 307,580.00; thence South 3,580.00 feet to a point having Coordinates of X = 2,658,538.87 and Y = 304,000.00; thence West 8,438.87 feet to a point on the common block line between said Block 47 and Block 48, Breton Sound Area having Coordinates of X = 2,650,100.00 and Y = 304,000.00; thence West 3,000.00 feet to a point having Coordinates of X = 2,647,100.00 and Y = 304,000.00; thence North 3,580.00 feet to a point on the common block line between said Block 48 and said Block 33 having Coordinates of X = 2,647,100.00 and Y = 307,580.00; thence North 11,270.00 feet to the point of beginning, containing approximately **2,499.47 acres**, all as more particularly outlined on a plat on file in the Office of Mineral Resources, Department of Natural Resources. All bearings, distances and coordinates are based on Louisiana Coordinate System of 1927, (North or South Zone), where applicable.

NOTE: The above description of the Tract nominated for lease has been provided and corrected, where required, exclusively by the nomination party. Any mineral lease selected from this Tract and awarded by the Louisiana State Mineral and Energy Board shall be without warranty of any kind, either express, implied, or statutory, including, but not limited to, the implied warranties of merchantability and fitness for a particular purpose. Should the mineral lease awarded by the Louisiana State Mineral and Energy Board be subsequently modified, cancelled or abrogated due to the existence of conflicting leases, operating agreements, private claims or other future obligations or conditions which may affect all or any portion of the leased Tract, it shall not relieve the Lessee of the obligation to pay any bonus due thereon to the Louisiana State Mineral and Energy Board, nor shall the Louisiana State Mineral and Energy Board be obligated to refund any consideration paid by the Lessor prior to such modification, cancellation, or abrogation, including, but not limited to, bonuses, rentals and royalties.

NOTE: The State of Louisiana does hereby reserve, and this lease shall be subject to, the imprescriptible right of surface use in the nature of a servitude in favor of the Department of Natural Resources, including its Offices and Commissions, for the sole purpose of implementing, constructing, servicing and maintaining approved coastal zone management and/or restoration projects. Utilization of any and all rights derived under this lease by the mineral lessee, its agents, successors or assigns, shall not interfere with nor hinder the reasonable surface use by the Department of Natural Resources, its Offices or Commissions, as herein above reserved.

NOTE: This tract is located in an area designated by the Louisiana Legislature or the Wildlife and Fisheries Commission as a Public Oyster Seed Ground, Reservation, or area of Calcasieu or Sabine Lake. Proposed projects occurring in these areas will be evaluated on a case by case basis by Louisiana Department of Wildlife & Fisheries. Modifications to proposed project features including, but not limited to, access routes, well sites, flowlines, and appurtenant structures maybe required by the Louisiana Department of Wildlife and Fisheries. In addition, compensatory mitigation will be required to offset unavoidable habitat impacts.

Applicant: SYNERGY LAND COMPANY, INC.

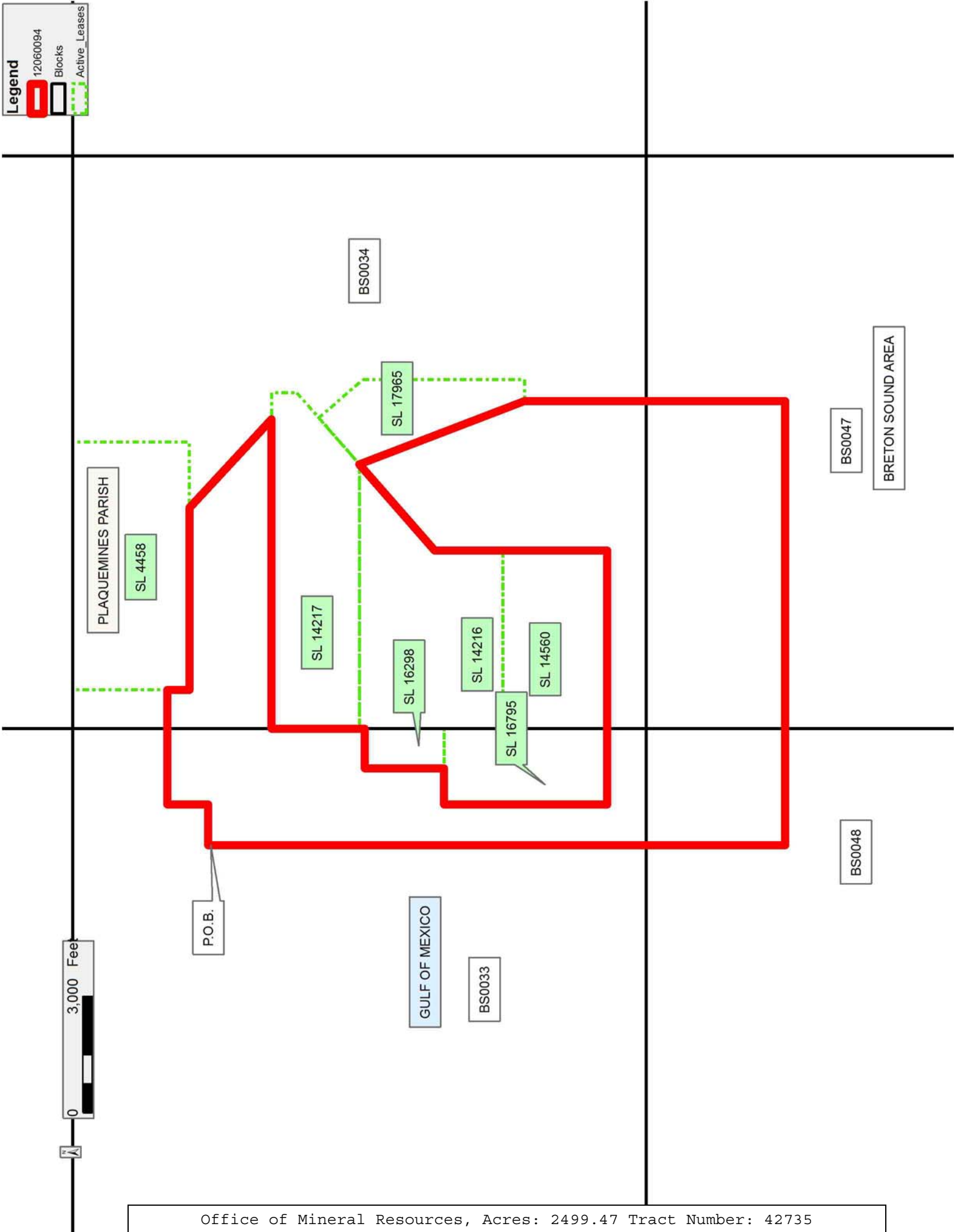
Bidder	Cash Payment	Price/ Acre	Rental	Oil	Gas	Other

**Legend**

12060094

Blocks

Active Leases



**TRACT 42736 - Portion of Block 26, Main Pass Area, Revised, Plaquemines Parish, Louisiana**

All of the lands now or formerly constituting the beds and bottoms of all water bodies of every nature and description as to which title is vested in the State of Louisiana, together with all islands arising therein and other lands formed by accretion or by reliction, where allowed by law, excepting tax adjudicated lands, and not presently under mineral lease on June 13, 2012, situated in Plaquemines Parish, Louisiana, and more particularly described as follows: Beginning at a point on the West line of Block 26, Main Pass Area, Revised, having Coordinates of X = 2,620,600.00 and Y = 314,955.00; thence East 14,750.00 feet to a point on the East line of said Block 26 having Coordinates of X = 2,635,350.00 and Y = 314,955.00; thence South 7,375.00 feet along the East line of said Block 26 to its Southeast corner having Coordinates of X = 2,635,350.00 and Y = 307,580.00; thence West 14,750.00 feet along the South line of said Block 26 to its Southwest corner having Coordinates of X = 2,620,600.00 and Y = 307,580.00; thence North 7,375.00 feet along the West line of said Block 26 to the point of beginning, containing approximately **2,497.27 acres**, all as more particularly outlined on a plat on file in the Office of Mineral Resources, Department of Natural Resources. All bearings, distances and coordinates are based on Louisiana Coordinate System of 1927, (North or South Zone), where applicable.

NOTE: The above description of the Tract nominated for lease has been provided and corrected, where required, exclusively by the nomination party. Any mineral lease selected from this Tract and awarded by the Louisiana State Mineral and Energy Board shall be without warranty of any kind, either express, implied, or statutory, including, but not limited to, the implied warranties of merchantability and fitness for a particular purpose. Should the mineral lease awarded by the Louisiana State Mineral and Energy Board be subsequently modified, cancelled or abrogated due to the existence of conflicting leases, operating agreements, private claims or other future obligations or conditions which may affect all or any portion of the leased Tract, it shall not relieve the Lessee of the obligation to pay any bonus due thereon to the Louisiana State Mineral and Energy Board, nor shall the Louisiana State Mineral and Energy Board be obligated to refund any consideration paid by the Lessor prior to such modification, cancellation, or abrogation, including, but not limited to, bonuses, rentals and royalties.

NOTE: The State of Louisiana does hereby reserve, and this lease shall be subject to, the imprescriptible right of surface use in the nature of a servitude in favor of the Department of Natural Resources, including its Offices and Commissions, for the sole purpose of implementing, constructing, servicing and maintaining approved coastal zone management and/or restoration projects. Utilization of any and all rights derived under this lease by the mineral lessee, its agents, successors or assigns, shall not interfere with nor hinder the reasonable surface use by the

Department of Natural Resources, its Offices or Commissions, as herein above reserved.

NOTE: This tract is located in an area designated by the Louisiana Legislature or the Wildlife and Fisheries Commission as a Public Oyster Seed Ground, Reservation, or area of Calcasieu or Sabine Lake. Proposed projects occurring in these areas will be evaluated on a case by case basis by Louisiana Department of Wildlife & Fisheries. Modifications to proposed project features including, but not limited to, access routes, well sites, flowlines, and appurtenant structures maybe required by the Louisiana Department of Wildlife and Fisheries. In addition, compensatory mitigation will be required to offset unavoidable habitat impacts.

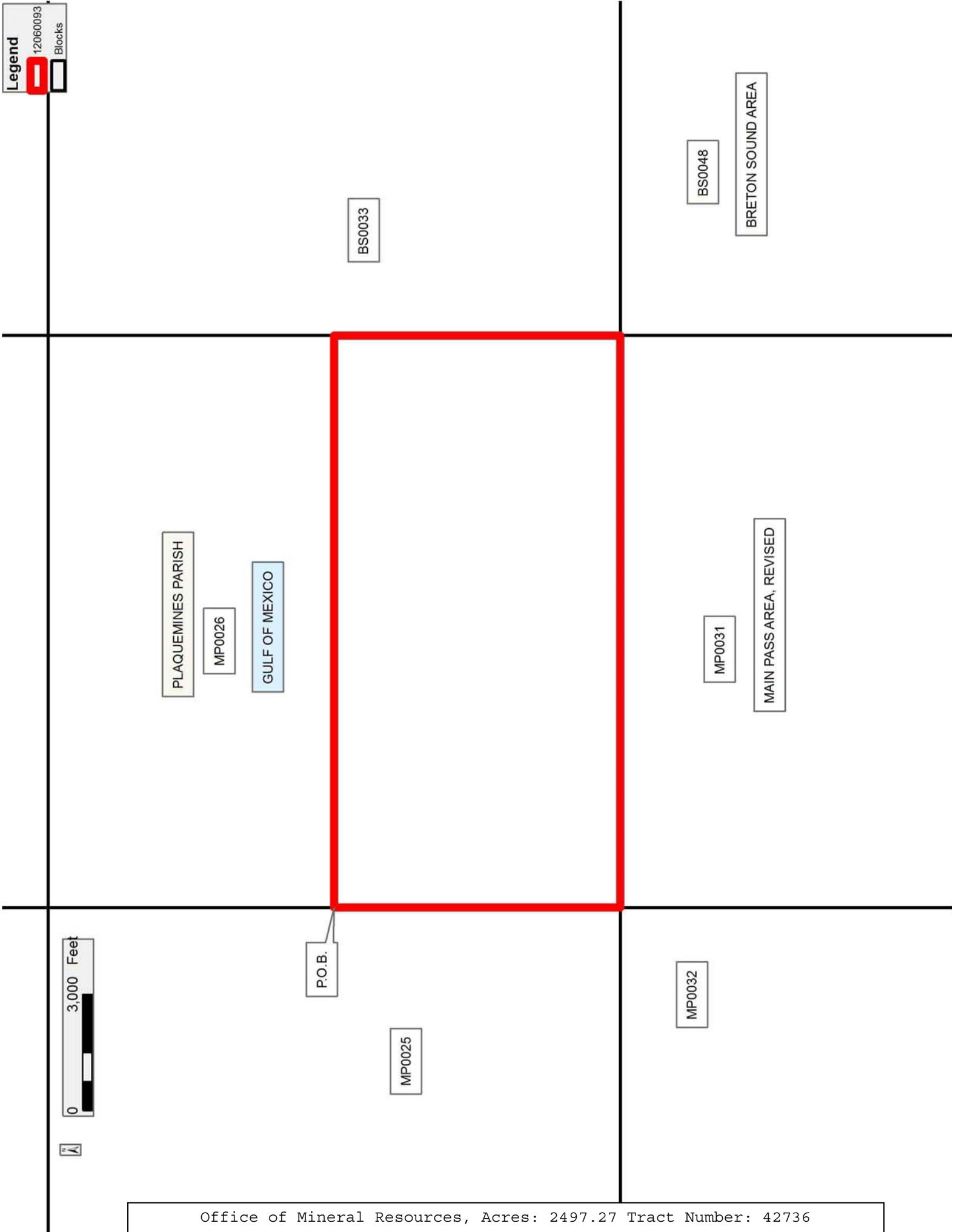
Applicant: SYNERGY LAND COMPANY, INC.

Bidder	Cash Payment	Price/ Acre	Rental	Oil	Gas	Other

Legend

12060093

Blocks





**TRACT 42737 - Portion of Blocks 25, and 32, Main Pass Area, Revised, Plaquemines Parish, Louisiana**

All of the lands now or formerly constituting the beds and bottoms of all water bodies of every nature and description as to which title is vested in the State of Louisiana, together with all islands arising therein and other lands formed by accretion or by reliction, where allowed by law, excepting tax adjudicated lands, and not presently under mineral lease on June 13, 2012, situated in Plaquemines Parish, Louisiana, and more particularly described as follows: Beginning at a point on the East line of Block 25, Main Pass Area, Revised, having Coordinates of X = 2,620,600.00 and Y = 313,830.00; thence South 6,250.00 feet along the East line of said Block 25 to its Southeast corner, also being the Northeast corner of Block 32, Main Pass Area, Revised, having Coordinates of X = 2,620,600.00 and Y = 307,580.00; thence South 8,404.17 feet along the East line of said Block 32 to a point on the North boundary of State Lease No. 20103 having Coordinates of X = 2,620,600.00 and Y = 299,175.83; thence West 452.11 feet along the North boundary of said State Lease No. 20103 to its Northwest corner having Coordinates of X = 2,620,147.89 and Y = 299,175.83; thence West 5,159.89 feet to a point on the East boundary of State Lease No. 20781 having Coordinates of X = 2,614,988.00 and Y = 299,175.83; thence along the boundary of said State Lease No. 20781 the following courses: North 4,572.17 feet to a point having Coordinates of X = 2,614,988.00 and Y = 303,748.00 and East 767.00 feet to the Southwest corner of State Lease No. 20482 having Coordinates of X = 2,615,755.00 and Y = 303,748.00; thence along the boundary of said State Lease No. 20482 the following courses: East 3,800.00 feet to a point having Coordinates of X = 2,619,555.00 and Y = 303,748.00; North 2,778.50 feet to a point having Coordinates of X = 2,619,555.00 and Y = 306,526.50; West 3,800.00 feet to a point having Coordinates of X = 2,615,755.00 and Y = 306,526.50 and South 2,134.50 feet to the Northeast corner of said State Lease No. 20781 having Coordinates of X = 2,615,755.00 and Y = 304,392.00; thence West 4,725.00 feet along the North boundary of said State Lease No. 20781 to a point having Coordinates of X = 2,611,030.00 and Y = 304,392.00; thence North 3,188.00 feet to a point on the common block line between said Block 32 and said Block 25 having Coordinates of X = 2,611,030.00 and Y = 307,580.00; thence North 3,510.38 feet to the Southeast corner of State Lease No. 16692, as amended, having Coordinates of X = 2,611,030.00 and Y = 311,090.38; thence North 2,739.62 feet along the East boundary of said State Lease No. 16692 to a point having Coordinates of X = 2,611,030.00 and Y = 313,830.00; thence East 9,570.00 feet to the point of beginning, containing approximately **2,491.79 acres**, all as more particularly outlined on a plat on file in the Office of Mineral Resources, Department of Natural Resources. All bearings, distances and coordinates are based on Louisiana Coordinate System of 1927, (North or South Zone), where applicable.

NOTE: The above description of the Tract nominated for lease has been provided and corrected, where required, exclusively by the nomination party. Any mineral lease selected from this Tract and awarded by the

Louisiana State Mineral and Energy Board shall be without warranty of any kind, either express, implied, or statutory, including, but not limited to, the implied warranties of merchantability and fitness for a particular purpose. Should the mineral lease awarded by the Louisiana State Mineral and Energy Board be subsequently modified, cancelled or abrogated due to the existence of conflicting leases, operating agreements, private claims or other future obligations or conditions which may affect all or any portion of the leased Tract, it shall not relieve the Lessee of the obligation to pay any bonus due thereon to the Louisiana State Mineral and Energy Board, nor shall the Louisiana State Mineral and Energy Board be obligated to refund any consideration paid by the Lessor prior to such modification, cancellation, or abrogation, including, but not limited to, bonuses, rentals and royalties.

NOTE: The State of Louisiana does hereby reserve, and this lease shall be subject to, the imprescriptible right of surface use in the nature of a servitude in favor of the Department of Natural Resources, including its Offices and Commissions, for the sole purpose of implementing, constructing, servicing and maintaining approved coastal zone management and/or restoration projects. Utilization of any and all rights derived under this lease by the mineral lessee, its agents, successors or assigns, shall not interfere with nor hinder the reasonable surface use by the Department of Natural Resources, its Offices or Commissions, as herein above reserved.

NOTE: This tract is located in an area designated by the Louisiana Legislature or the Wildlife and Fisheries Commission as a Public Oyster Seed Ground, Reservation, or area of Calcasieu or Sabine Lake. Proposed projects occurring in these areas will be evaluated on a case by case basis by Louisiana Department of Wildlife & Fisheries. Modifications to proposed project features including, but not limited to, access routes, well sites, flowlines, and appurtenant structures maybe required by the Louisiana Department of Wildlife and Fisheries. In addition, compensatory mitigation will be required to offset unavoidable habitat impacts.

Applicant: SYNERGY LAND COMPANY, INC.

Bidder	Cash Payment	Price/ Acre	Rental	Oil	Gas	Other

**Legend**

12060092

Blocks

Active Leases

