

**TRACT 42752 - Bossier and Caddo Parishes, Louisiana**

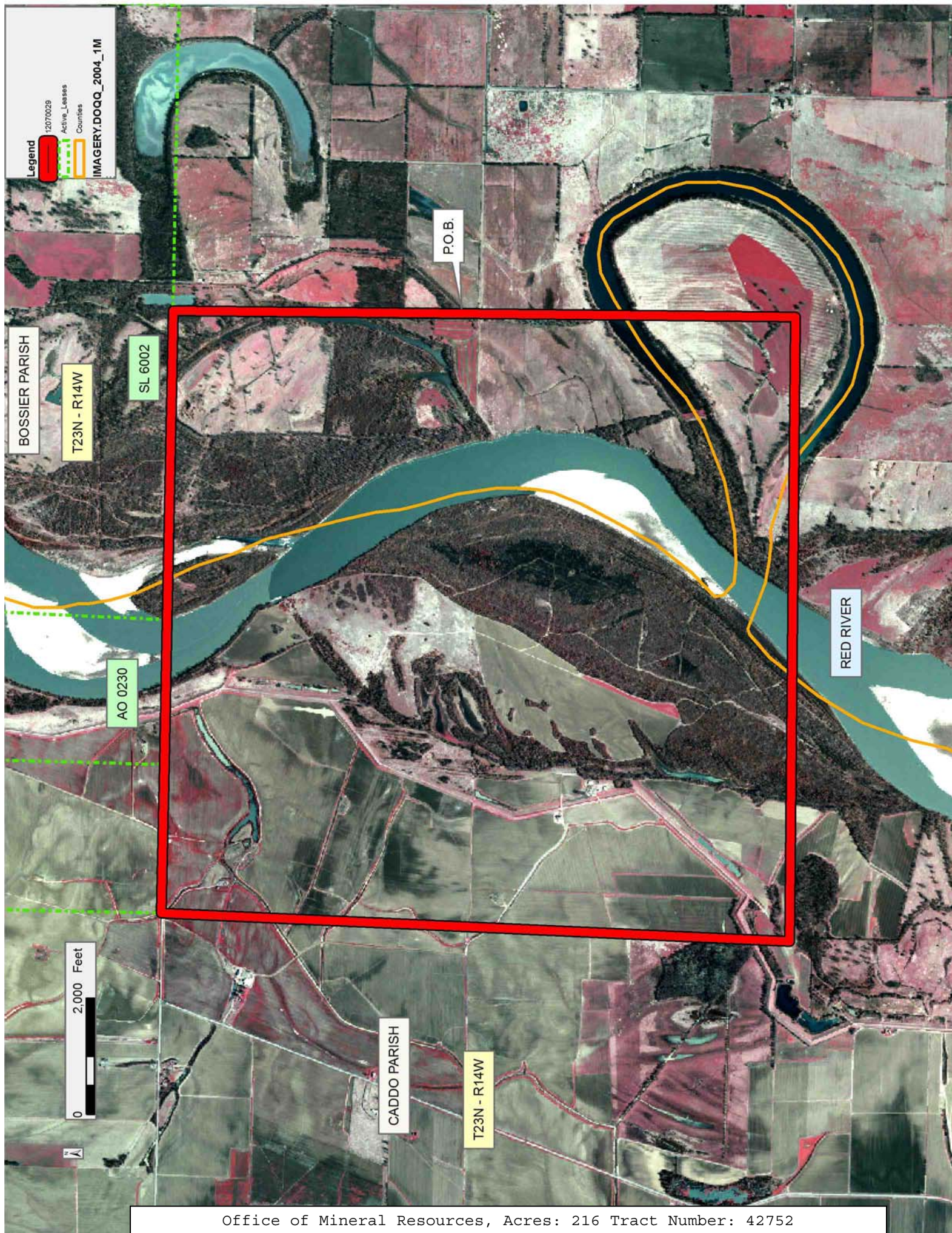
All of the lands now or formerly constituting the beds and bottoms of all water bodies of every nature and description as to which title is vested in the State of Louisiana, together with all islands arising therein and other lands formed by accretion or by reliction, where allowed by law, excepting tax adjudicated lands, and not presently under mineral lease on July 11, 2012, situated in Bossier and Caddo Parishes, Louisiana, and more particularly described as follows: Beginning at a point having Coordinates X = 1,598,960.00 and Y = 843,400.00; thence South 5,120.00 feet to a point having Coordinates of X = 1,598,960.00 and Y = 838,280.00; thence West 10,730.00 feet to a point having Coordinates of X = 1,588,230.00 and Y = 838,280.00; thence North 02 degrees 02 minutes 46 seconds East 5,123.27 feet to a point having Coordinates of X = 1,588,412.92 and Y = 843,400.00; thence Northerly approximately 5,672 feet to the Southwest corner of State Lease No. 6002; thence Easterly approximately 2,561 feet along the Southern boundary of said State Lease No. 6002 to the Southwest corner of Operating Agreement No. 230; thence Easterly approximately 2,479 feet along the Southern boundary of said Operating Agreement No. 230 to its Southeast corner, said corner also being a point on the Southern boundary of said State Lease No. 6002; thence Easterly approximately 5,308 feet along the Southern boundary of said State Lease No. 6002 to a point of intersection with a North-South line having a Coordinate of X = 1,598,960.00; thence South approximately 5,566 feet along said line to the point of beginning, **LESS AND EXCEPT** that portion, if any, of State Lease No. 6002 and Operating Agreement No. 230 which may lie within the above described tract, containing approximately **216 acres**, all as more particularly outlined on a plat on file in the Office of Mineral Resources, Department of Natural Resources. All bearings, distances and coordinates are based on Louisiana Coordinate System of 1927, (North or South Zone), where applicable.

NOTE: The above description of the Tract nominated for lease has been provided and corrected, where required, exclusively by the nomination party. Any mineral lease selected from this Tract and awarded by the Louisiana State Mineral and Energy Board shall be without warranty of any kind, either express, implied, or statutory, including, but not limited to, the implied warranties of merchantability and fitness for a particular purpose. Should the mineral lease awarded by the Louisiana State Mineral and Energy Board be subsequently modified, cancelled or abrogated due to the existence of conflicting leases, operating agreements, private claims or other future obligations or conditions which may affect all or any portion of the leased Tract, it shall not relieve the Lessee of the obligation to pay any bonus due thereon to the Louisiana State Mineral and Energy Board, nor shall the Louisiana State Mineral and Energy Board be obligated to refund any consideration paid by the Lessor prior to such modification, cancellation, or abrogation, including, but not limited to, bonuses, rentals and royalties.

Applicant: JB LAND SERVICES, L.L.C.

Bidder	Cash Payment	Price/ Acre	Rental	Oil	Gas	Other







**TRACT 42753 - Avoyelles and Catahoula Parishes, Louisiana**

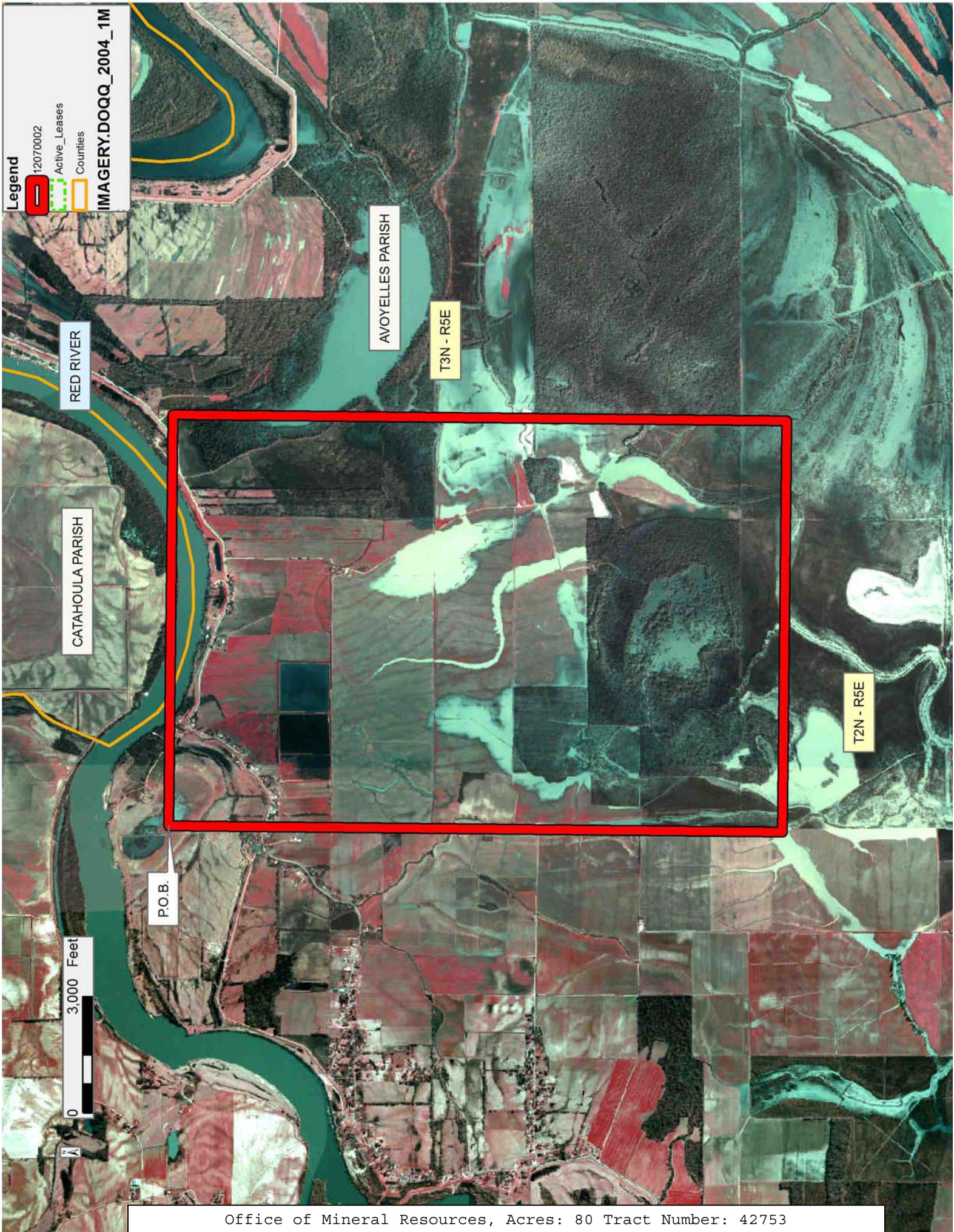
All of the lands now or formerly constituting the beds and bottoms of all water bodies of every nature and description as to which title is vested in the State of Louisiana, together with all islands arising therein and other lands formed by accretion or by reliction, where allowed by law, excepting tax adjudicated lands, and not presently under mineral lease on July 11, 2012, situated in Avoyelles and Catahoula Parishes, Louisiana, and more particularly described as follows: Beginning at a point having Coordinates of X = 2,155,900.00 and Y = 203,500.00; thence East 10,600.00 feet to a point having Coordinates of X = 2,166,500.00 and Y = 203,500.00; thence South 15,800.00 feet to a point having Coordinates of X = 2,166,500.00 and Y = 187,700.00; thence West 10,600.00 feet to a point having Coordinates of X = 2,155,900.00 and Y = 187,700.00; thence North 15,800.00 feet to the point of beginning, containing approximately **80 acres**, all as more particularly outlined on a plat on file in the Office of Mineral Resources, Department of Natural Resources. All bearings, distances and coordinates are based on Louisiana Coordinate System of 1927, (North or South Zone), where applicable.

NOTE: The above description of the Tract nominated for lease has been provided and corrected, where required, exclusively by the nomination party. Any mineral lease selected from this Tract and awarded by the Louisiana State Mineral and Energy Board shall be without warranty of any kind, either express, implied, or statutory, including, but not limited to, the implied warranties of merchantability and fitness for a particular purpose. Should the mineral lease awarded by the Louisiana State Mineral and Energy Board be subsequently modified, cancelled or abrogated due to the existence of conflicting leases, operating agreements, private claims or other future obligations or conditions which may affect all or any portion of the leased Tract, it shall not relieve the Lessee of the obligation to pay any bonus due thereon to the Louisiana State Mineral and Energy Board, nor shall the Louisiana State Mineral and Energy Board be obligated to refund any consideration paid by the Lessor prior to such modification, cancellation, or abrogation, including, but not limited to, bonuses, rentals and royalties.

Applicant: MARKER OIL & GAS

Bidder	Cash Payment	Price/ Acre	Rental	Oil	Gas	Other







**TRACT 42754 - Avoyelles Parish, Louisiana**

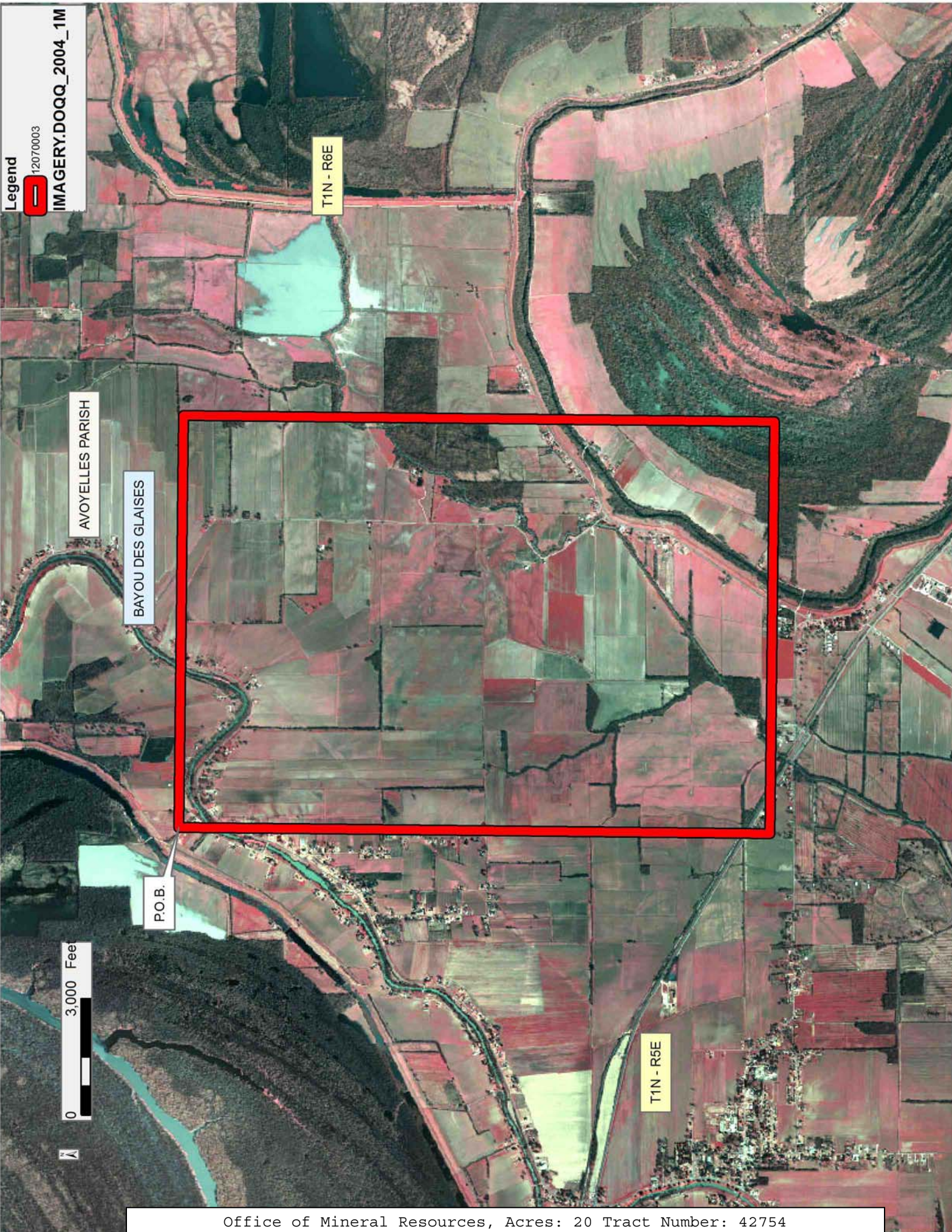
All of the lands now or formerly constituting the beds and bottoms of all water bodies of every nature and description as to which title is vested in the State of Louisiana, together with all islands arising therein and other lands formed by accretion or by reliction, where allowed by law, excepting tax adjudicated lands, and not presently under mineral lease on July 11, 2012, situated in Avoyelles Parish, Louisiana, and more particularly described as follows: Beginning at a point having Coordinates of X = 2,172,600.00 and Y = 148,800.00; thence East 10,600.00 feet to a point having Coordinates of X = 2,183,200.00 and Y = 148,800.00; thence South 15,200.00 feet to a point having Coordinates of X = 2,183,200.00 and Y = 133,600.00; thence West 10,600.00 feet to a point having Coordinates of X = 2,172,600.00 and Y = 133,600.00; thence North 15,200.00 feet to the point of beginning, containing approximately **20 acres**, all as more particularly outlined on a plat on file in the Office of Mineral Resources, Department of Natural Resources. All bearings, distances and coordinates are based on Louisiana Coordinate System of 1927, (North or South Zone), where applicable.

NOTE: The above description of the Tract nominated for lease has been provided and corrected, where required, exclusively by the nomination party. Any mineral lease selected from this Tract and awarded by the Louisiana State Mineral and Energy Board shall be without warranty of any kind, either express, implied, or statutory, including, but not limited to, the implied warranties of merchantability and fitness for a particular purpose. Should the mineral lease awarded by the Louisiana State Mineral and Energy Board be subsequently modified, cancelled or abrogated due to the existence of conflicting leases, operating agreements, private claims or other future obligations or conditions which may affect all or any portion of the leased Tract, it shall not relieve the Lessee of the obligation to pay any bonus due thereon to the Louisiana State Mineral and Energy Board, nor shall the Louisiana State Mineral and Energy Board be obligated to refund any consideration paid by the Lessor prior to such modification, cancellation, or abrogation, including, but not limited to, bonuses, rentals and royalties.

Applicant: MARKER OIL & GAS

Bidder	Cash Payment	Price/Acre	Rental	Oil	Gas	Other







**TRACT 42755 - Allen and Beauregard Parishes, Louisiana**

All of the lands now or formerly constituting the beds and bottoms of all water bodies of every nature and description as to which title is vested in the State of Louisiana, together with all islands arising therein and other lands formed by accretion or by reliction, where allowed by law, excepting tax adjudicated lands, and not presently under mineral lease on July 11, 2012, situated in Allen and Beauregard Parishes, Louisiana, and more particularly described as follows: Beginning at a point having Coordinates of X = 1,472,009.88 and Y = 730,617.12; thence South 45 degrees 30 minutes 00 seconds East 18,000.00 feet to a point having Coordinates of X = 1,484,848.39 and Y = 718,000.75; thence South 44 degrees 30 minutes 00 seconds West 6,000.00 feet to a point having Coordinates of X = 1,480,642.93 and Y = 713,721.25; thence North 45 degrees 30 minutes 00 seconds West 18,000.00 feet to a point having Coordinates of X = 1,467,804.43 and Y = 726,337.62; thence North 44 degrees 30 minutes 00 seconds East 6,000.00 feet to the point of beginning, **LESS AND EXCEPT** any right, title, and interest in lands owned by and not under lease from the State of Louisiana, on behalf of the Beauregard and Allen Parish School Boards, situated in Section 16, Township 5 South, Range 6 West, Beauregard and Allen Parishes, Louisiana, contained within the above described tract, containing **44 acres**, all as more particularly outlined on a plat on file in the Office of Mineral Resources, Department of Natural Resources. All bearings, distances and coordinates are based on Louisiana Coordinate System of 1927, (North or South Zone), where applicable.

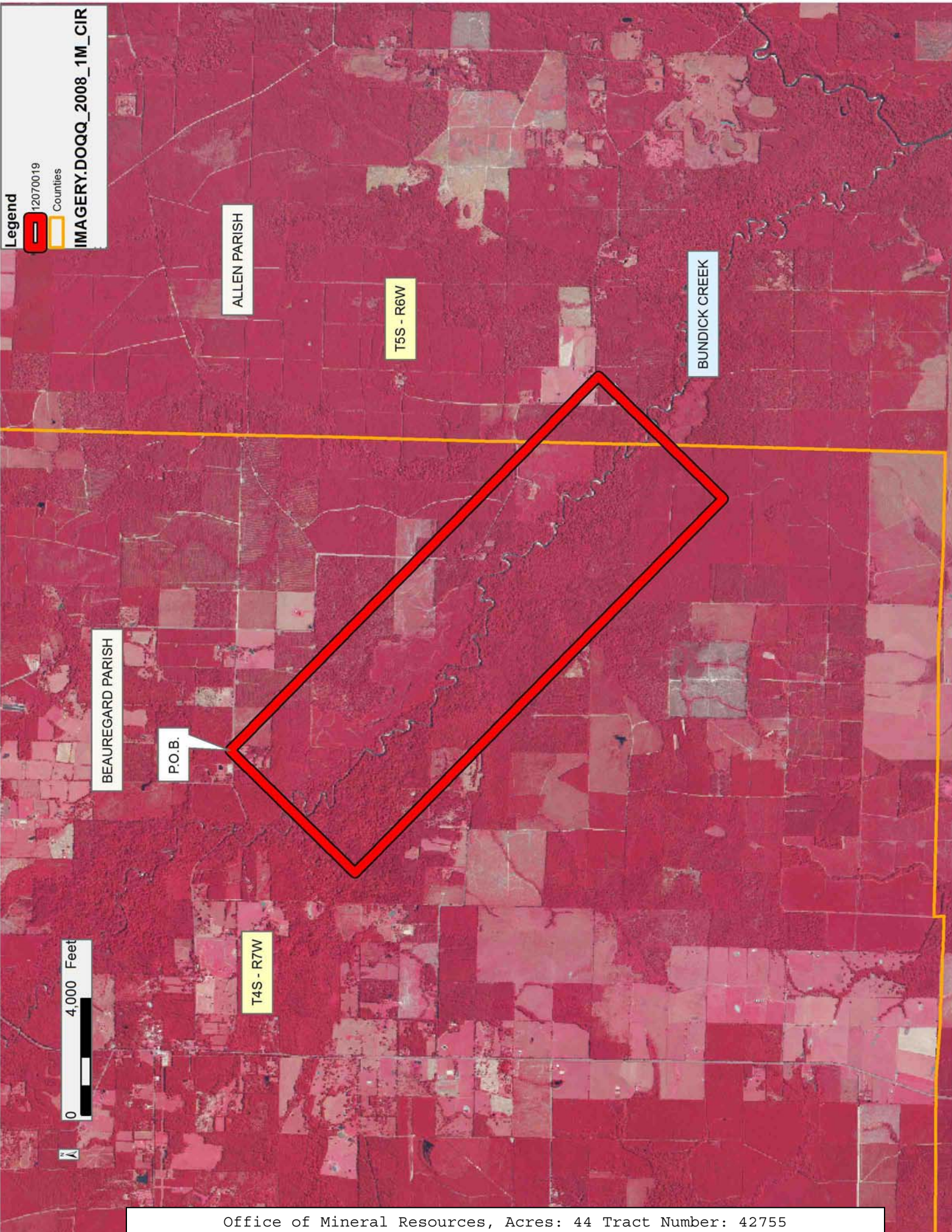
NOTE: The above description of the Tract nominated for lease has been provided and corrected, where required, exclusively by the nomination party. Any mineral lease selected from this Tract and awarded by the Louisiana State Mineral and Energy Board shall be without warranty of any kind, either express, implied, or statutory, including, but not limited to, the implied warranties of merchantability and fitness for a particular purpose. Should the mineral lease awarded by the Louisiana State Mineral and Energy Board be subsequently modified, cancelled or abrogated due to the existence of conflicting leases, operating agreements, private claims or other future obligations or conditions which may affect all or any portion of the leased Tract, it shall not relieve the Lessee of the obligation to pay any bonus due thereon to the Louisiana State Mineral and Energy Board, nor shall the Louisiana State Mineral and Energy Board be obligated to refund any consideration paid by the Lessor prior to such modification, cancellation, or abrogation, including, but not limited to, bonuses, rentals and royalties.

NOTE: The above Tract is located upon a restricted scenic river and all operations in this area must be conducted in strict conformity with the regulations of the Corps of Engineers, U.S. Army.



Applicant: HAROLD J. ANDERSON, INC.

Bidder	Cash Payment	Price/ Acre	Rental	Oil	Gas	Other



Legend

12070019

Counties

IMAGERY.DOQQ\_2008\_1M\_CIR

0 4,000 Feet

BEAUREGARD PARISH

P.O.B.

ALLEN PARISH

T4S - R7W

T5S - R6W

BUNDICK CREEK



**TRACT 42756 - Allen Parish, Louisiana**

All of the lands now or formerly constituting the beds and bottoms of all water bodies of every nature and description as to which title is vested in the State of Louisiana, together with all islands arising therein and other lands formed by accretion or by reliction, where allowed by law, excepting tax adjudicated lands, and not presently under mineral lease on July 11, 2012, situated in Allen Parish, Louisiana, and more particularly described as follows: Beginning at a point having Coordinates of X = 1,497,272.76 and Y = 727,295.27; thence East 7,000.00 feet to a point having Coordinates of X = 1,504,272.76 and Y = 727,295.27; thence South 11,045.89 feet to a point having Coordinates of X = 1,504,272.76 and Y = 716,249.38; thence West 4,245.33 feet to a point being the Northeast corner of State Lease No. 19595 having Coordinates of X = 1,500,027.43 and Y = 716,249.38; thence North 89 degrees 02 minutes 44 seconds West 2,755.05 feet along the Northern boundary of said State Lease No. 19595 to its Northwest corner having Coordinates of X = 1,497,272.76 and Y = 716,295.27; thence North 11,000.00 feet to the point of beginning, containing **47 acres**, all as more particularly outlined on a plat on file in the Office of Mineral Resources, Department of Natural Resources. All bearings, distances and coordinates are based on Louisiana Coordinate System of 1927, (North or South Zone), where applicable.

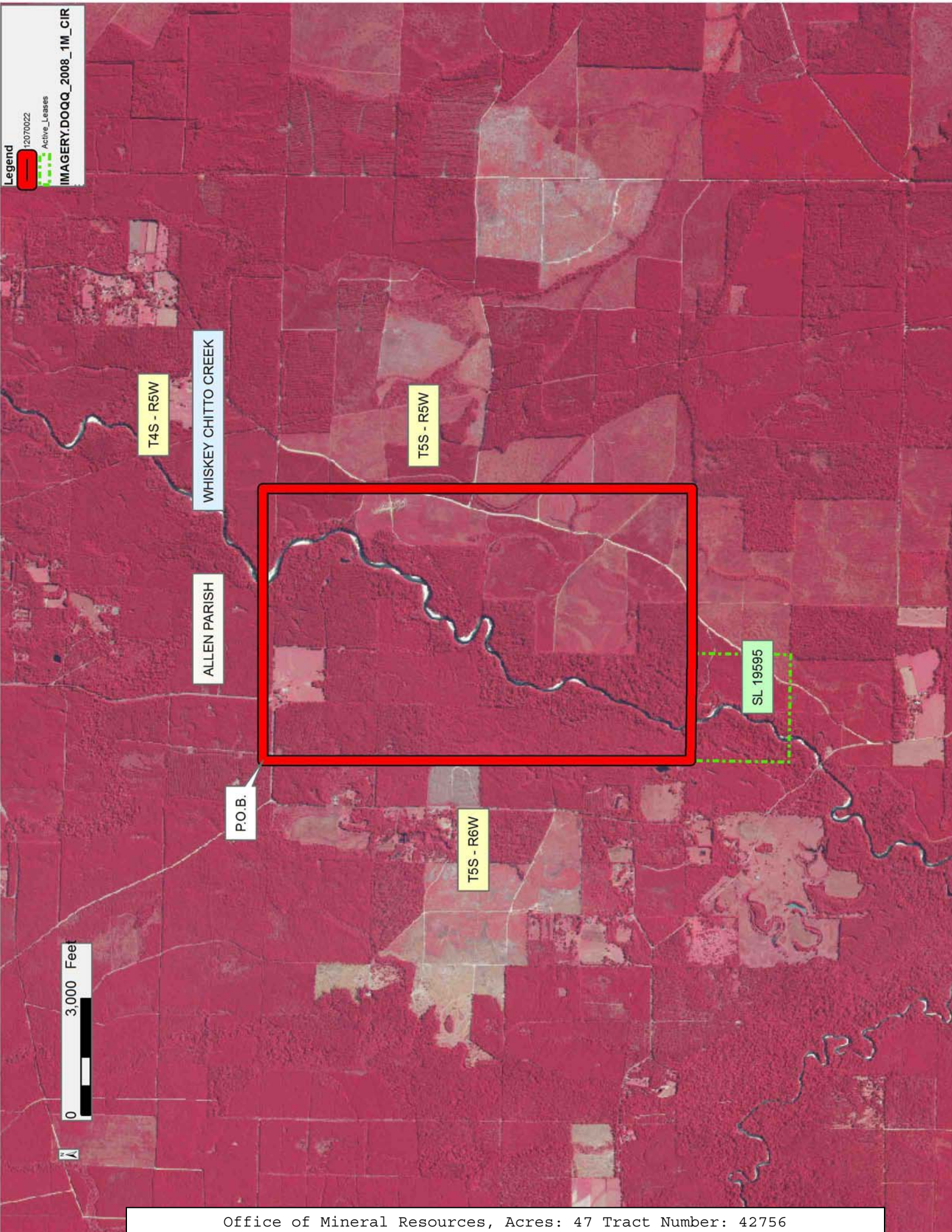
NOTE: The above description of the Tract nominated for lease has been provided and corrected, where required, exclusively by the nomination party. Any mineral lease selected from this Tract and awarded by the Louisiana State Mineral and Energy Board shall be without warranty of any kind, either express, implied, or statutory, including, but not limited to, the implied warranties of merchantability and fitness for a particular purpose. Should the mineral lease awarded by the Louisiana State Mineral and Energy Board be subsequently modified, cancelled or abrogated due to the existence of conflicting leases, operating agreements, private claims or other future obligations or conditions which may affect all or any portion of the leased Tract, it shall not relieve the Lessee of the obligation to pay any bonus due thereon to the Louisiana State Mineral and Energy Board, nor shall the Louisiana State Mineral and Energy Board be obligated to refund any consideration paid by the Lessor prior to such modification, cancellation, or abrogation, including, but not limited to, bonuses, rentals and royalties.

NOTE: The above Tract is located upon a restricted scenic river and all operations in this area must be conducted in strict conformity with the regulations of the Corps of Engineers, U.S. Army.

Applicant: HAROLD J. ANDERSON, INC.

Bidder	Cash Payment	Price/ Acre	Rental	Oil	Gas	Other





**TRACT 42757 - Allen and Beauregard Parishes, Louisiana**

All of the lands now or formerly constituting the beds and bottoms of all water bodies of every nature and description as to which title is vested in the State of Louisiana, together with all islands arising therein and other lands formed by accretion or by reliction, where allowed by law, excepting tax adjudicated lands, and not presently under mineral lease on July 11, 2012, situated in Allen and Beauregard Parishes, Louisiana, and more particularly described as follows: Beginning at a point having Coordinates of X = 1,484,848.39 and Y = 718,000.75; thence South 53 degrees 31 minutes 13 seconds East 7,118.32 feet to a point having Coordinates of X = 1,490,572.00 and Y = 713,768.65; thence South 5,400.00 feet to a point having Coordinates of X = 1,490,572.00 and Y = 708,368.65; thence North 61 degrees 40 minutes 18 seconds West 11,279.93 feet to a point having Coordinates of X = 1,480,642.93 and Y = 713,721.25; thence North 44 degrees 30 minutes 00 seconds East 6,000.00 feet to the point of beginning, **LESS AND EXCEPT** any right, title, and interest in lands owned by and not under lease from the State of Louisiana, on behalf of the Beauregard and Allen Parish School Boards, situated in Section 16, Township 5 South, Range 6 West, Beauregard and Allen Parishes, Louisiana, contained within the above described tract, containing **31 acres**, all as more particularly outlined on a plat on file in the Office of Mineral Resources, Department of Natural Resources. All bearings, distances and coordinates are based on Louisiana Coordinate System of 1927, (North or South Zone), where applicable.

NOTE: The above description of the Tract nominated for lease has been provided and corrected, where required, exclusively by the nomination party. Any mineral lease selected from this Tract and awarded by the Louisiana State Mineral and Energy Board shall be without warranty of any kind, either express, implied, or statutory, including, but not limited to, the implied warranties of merchantability and fitness for a particular purpose. Should the mineral lease awarded by the Louisiana State Mineral and Energy Board be subsequently modified, cancelled or abrogated due to the existence of conflicting leases, operating agreements, private claims or other future obligations or conditions which may affect all or any portion of the leased Tract, it shall not relieve the Lessee of the obligation to pay any bonus due thereon to the Louisiana State Mineral and Energy Board, nor shall the Louisiana State Mineral and Energy Board be obligated to refund any consideration paid by the Lessor prior to such modification, cancellation, or abrogation, including, but not limited to, bonuses, rentals and royalties.

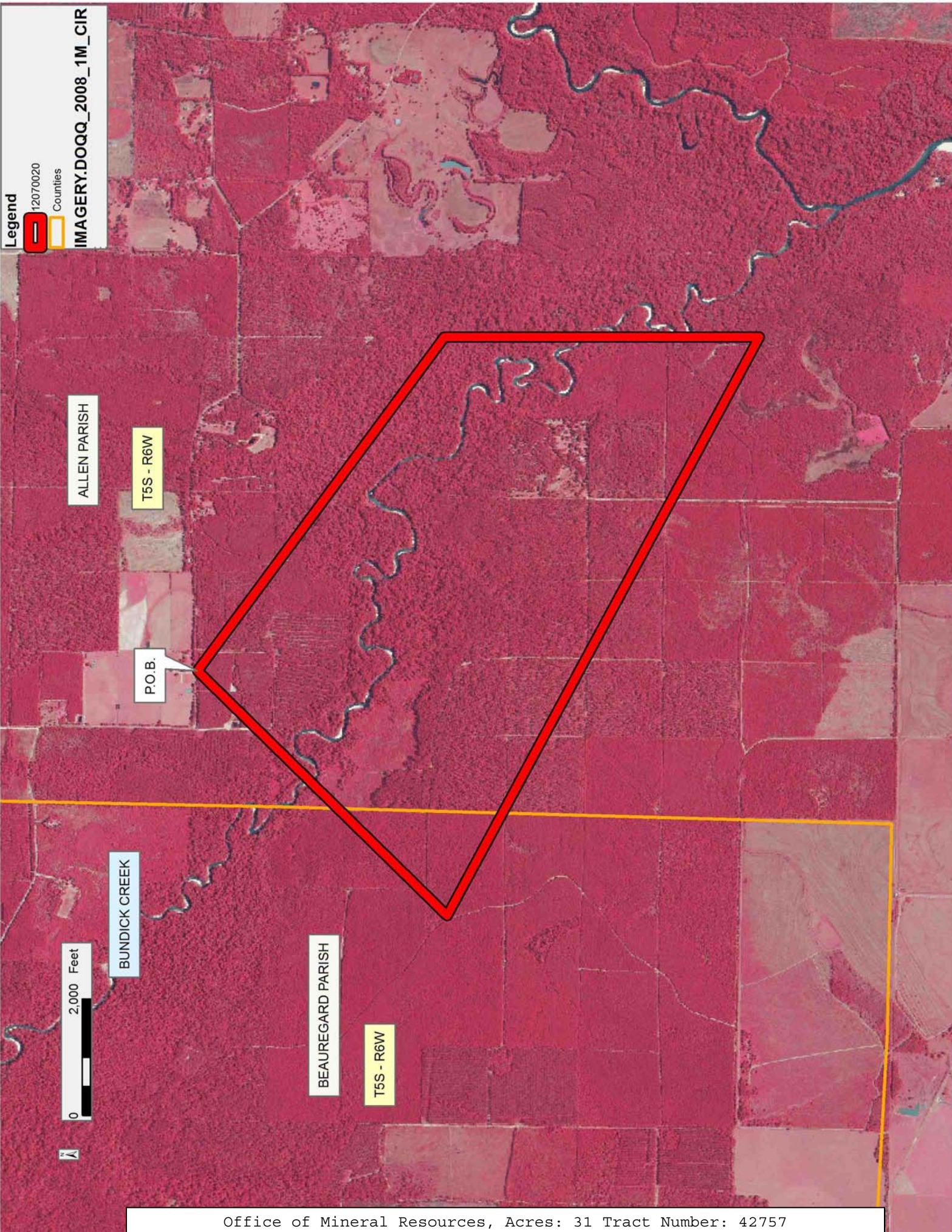
NOTE: The above Tract is located upon a restricted scenic river and all operations in this area must be conducted in strict conformity with the regulations of the Corps of Engineers, U.S. Army.



Applicant: HAROLD J. ANDERSON, INC.

Bidder	Cash Payment	Price/ Acre	Rental	Oil	Gas	Other







**TRACT 42758 - Allen Parish, Louisiana**

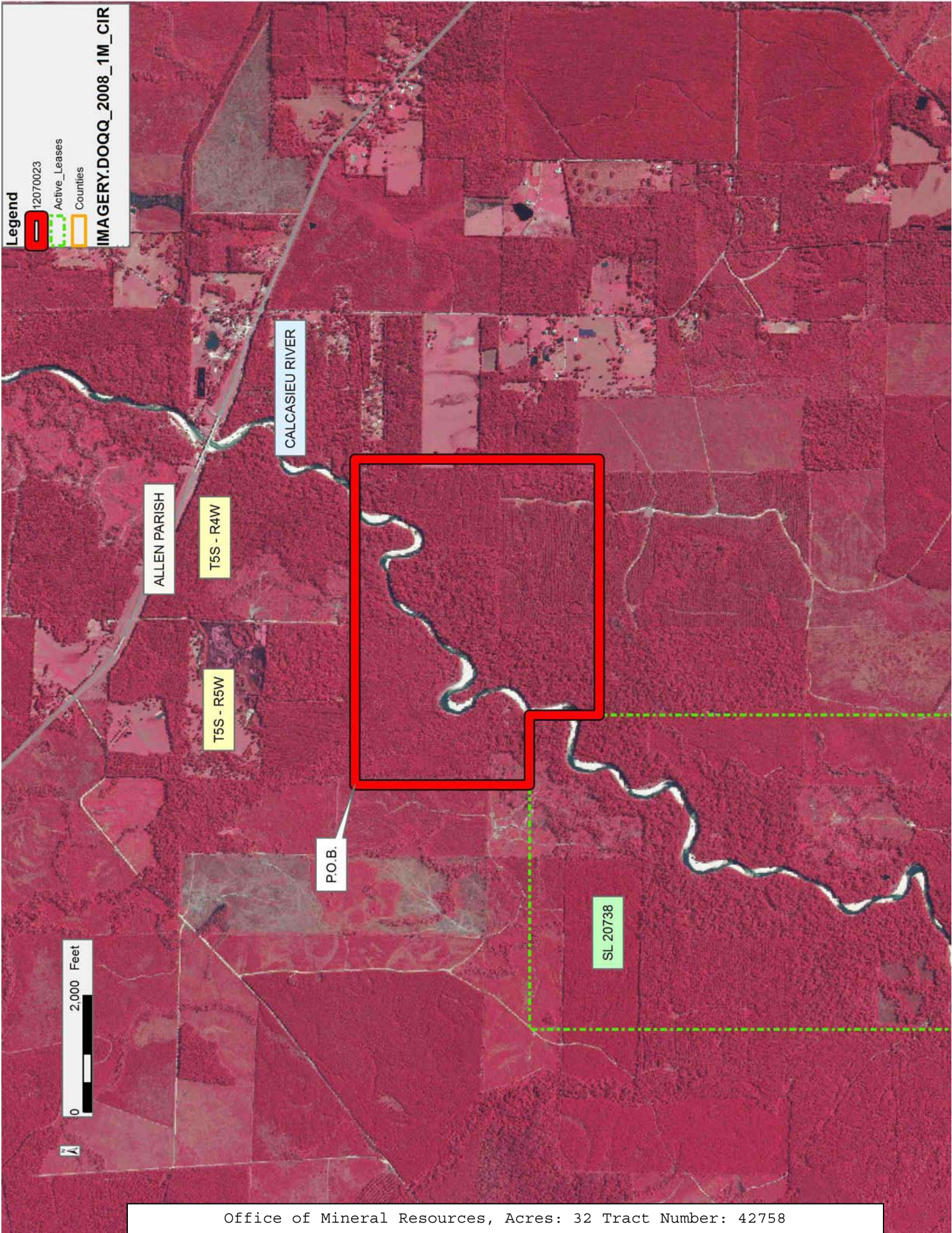
All of the lands now or formerly constituting the beds and bottoms of all water bodies of every nature and description as to which title is vested in the State of Louisiana, together with all islands arising therein and other lands formed by accretion or by reliction, where allowed by law, excepting tax adjudicated lands, and not presently under mineral lease on July 11, 2012, situated in Allen Parish, Louisiana, and more particularly described as follows: Beginning at a point having Coordinates of X = 1,528,390.00 and Y = 717,910.00; thence East 5,600.00 feet to a point having Coordinates of X = 1,533,990.00 and Y = 717,910.00; thence South 4,200.00 feet to a point having Coordinates of X = 1,533,990.00 and Y = 713,710.00; thence West 4,400.00 feet to a point on the Eastern boundary of State Lease No. 20738 having Coordinates of X = 1,529,590.00 and Y = 713,710.00; the along the boundary of said State Lease No. 20738 the following: North 1,200.00 feet to its Northeast corner of having Coordinates X = 1,529,590.00 and Y = 714,910.00, and West 1,200.00 feet to a point having Coordinates X = 1,528,390.00 and Y = 714,910.00; thence North 3,000.00 feet back to the point of beginning, containing **32 acres**, all as more particularly outlined on a plat on file in the Office of Mineral Resources, Department of Natural Resources. All bearings, distances and coordinates are based on Louisiana Coordinate System of 1927, (North or South Zone), where applicable.

NOTE: The above description of the Tract nominated for lease has been provided and corrected, where required, exclusively by the nomination party. Any mineral lease selected from this Tract and awarded by the Louisiana State Mineral and Energy Board shall be without warranty of any kind, either express, implied, or statutory, including, but not limited to, the implied warranties of merchantability and fitness for a particular purpose. Should the mineral lease awarded by the Louisiana State Mineral and Energy Board be subsequently modified, cancelled or abrogated due to the existence of conflicting leases, operating agreements, private claims or other future obligations or conditions which may affect all or any portion of the leased Tract, it shall not relieve the Lessee of the obligation to pay any bonus due thereon to the Louisiana State Mineral and Energy Board, nor shall the Louisiana State Mineral and Energy Board be obligated to refund any consideration paid by the Lessor prior to such modification, cancellation, or abrogation, including, but not limited to, bonuses, rentals and royalties.

Applicant: HAROLD J. ANDERSON, INC.

Bidder	Cash Payment	Price/ Acre	Rental	Oil	Gas	Other







**TRACT 42759 - Allen Parish, Louisiana**

All of the lands now or formerly constituting the beds and bottoms of all water bodies of every nature and description as to which title is vested in the State of Louisiana, together with all islands arising therein and other lands formed by accretion or by reliction, where allowed by law, excepting tax adjudicated lands, and not presently under mineral lease on July 11, 2012, situated in Allen Parish, Louisiana, and more particularly described as follows: Beginning at a point having Coordinates of X = 1,490,572.00 and Y = 713,768.65; thence East 6,659.46 feet to a point being the Southwest corner of State Lease No. 19595 having Coordinates X = 1,497,231.44 and Y = 713,768.64; thence South 89 degrees 04 minutes 47 seconds East 1,340.74 feet along the Southern boundary of said State Lease No. 19595 to a point having Coordinates of X = 1,498,572.00 and Y = 713,747.11; thence South 13,256.11 feet to a point being the Northeast corner of State Lease No. 20622 having Coordinates of X = 1,498,572.00 and Y = 700,491.00; thence West 5,793.00 feet to a point being the Northwest corner of said State Lease No. 20622 having Coordinates of X = 1,492,779.00 and Y = 700,491.00; thence West 2,207.00 feet to a point having Coordinates of X = 1,490,572.00 and Y = 700,491.00; thence North 13,277.65 feet to the point of beginning, containing **81 acres**, all as more particularly outlined on a plat on file in the Office of Mineral Resources, Department of Natural Resources. All bearings, distances and coordinates are based on Louisiana Coordinate System of 1927, (North or South Zone), where applicable.

NOTE: The above description of the Tract nominated for lease has been provided and corrected, where required, exclusively by the nomination party. Any mineral lease selected from this Tract and awarded by the Louisiana State Mineral and Energy Board shall be without warranty of any kind, either express, implied, or statutory, including, but not limited to, the implied warranties of merchantability and fitness for a particular purpose. Should the mineral lease awarded by the Louisiana State Mineral and Energy Board be subsequently modified, cancelled or abrogated due to the existence of conflicting leases, operating agreements, private claims or other future obligations or conditions which may affect all or any portion of the leased Tract, it shall not relieve the Lessee of the obligation to pay any bonus due thereon to the Louisiana State Mineral and Energy Board, nor shall the Louisiana State Mineral and Energy Board be obligated to refund any consideration paid by the Lessor prior to such modification, cancellation, or abrogation, including, but not limited to, bonuses, rentals and royalties.

NOTE: The above Tract is located upon a restricted scenic river and all operations in this area must be conducted in strict conformity with the regulations of the Corps of Engineers, U.S. Army.



Applicant: HAROLD J. ANDERSON, INC.

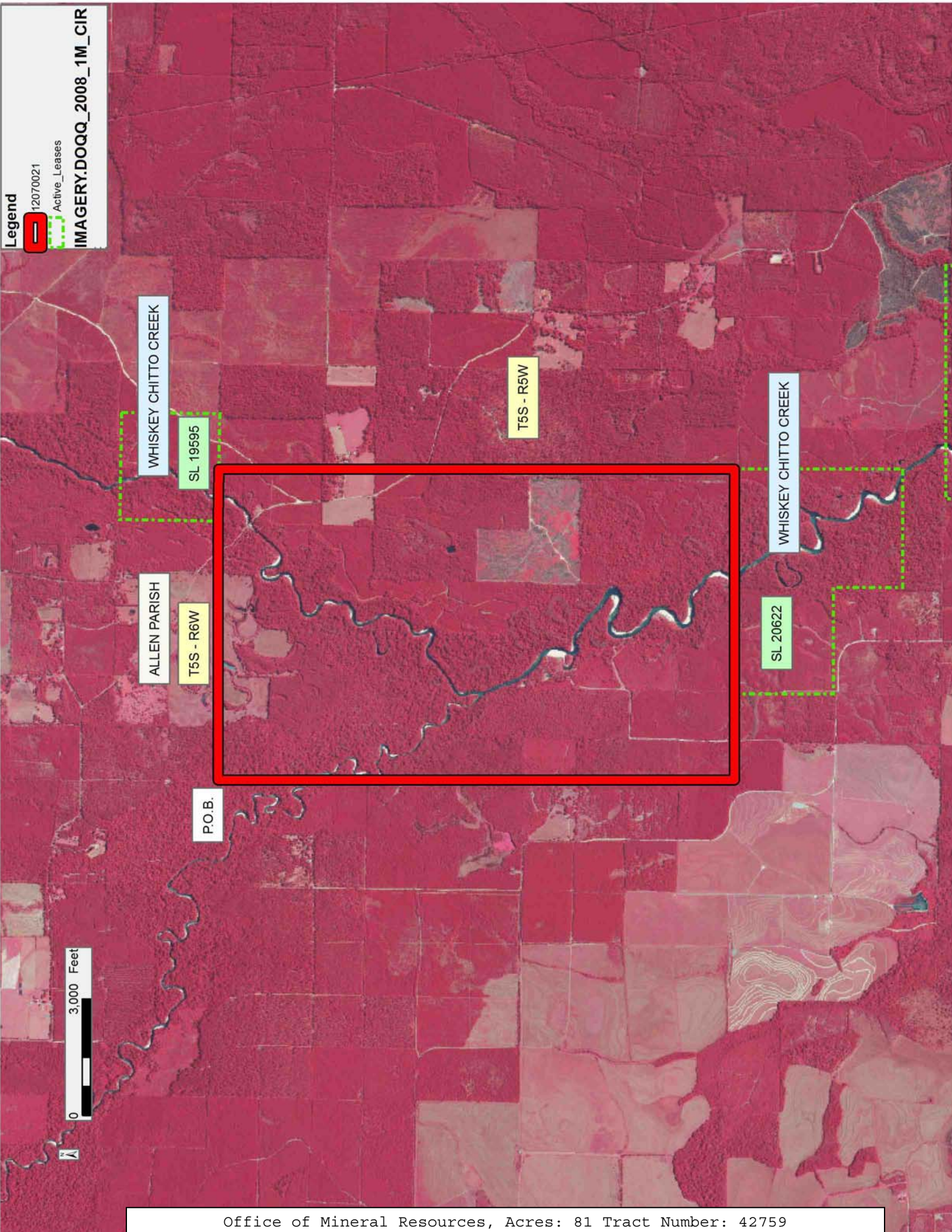
Bidder	Cash Payment	Price/ Acre	Rental	Oil	Gas	Other

**Legend**

12070021

Active\_Leases

IMAGERY.DOQQ\_2008\_1M\_CIR





**TRACT 42760 - Allen Parish, Louisiana**

All of the lands now or formerly constituting the beds and bottoms of all water bodies of every nature and description as to which title is vested in the State of Louisiana, together with all islands arising therein and other lands formed by accretion or by reliction, where allowed by law, excepting tax adjudicated lands, and not presently under mineral lease on July 11, 2012, situated in Allen Parish, Louisiana, and more particularly described as follows: Beginning at a point being the Northwest corner of State Lease No. 20672, having Coordinates of X = 1,497,800.00 and Y = 695,060.00; thence North 1,110.00 feet to a point on the Southern boundary of State Lease No. 20622 having Coordinates of X = 1,497,800.00 and Y = 696,170.00; thence East 772.00 feet to a point being the Southeast corner of said State Lease No. 20622 having Coordinates of X = 1,498,572.00 and Y = 696,170.00; thence East 2,228.00 feet to a point having Coordinates of X = 1,500,800.00 and Y = 696,170.00; thence South 1,110.00 feet to a point on the Northern boundary of said State Lease No. 20672 having Coordinates of X = 1,500,800.00 and Y = 695,060.00; thence West 3,000.00 feet along the Northern boundary of said State Lease No. 20672 to the point of beginning, containing approximately **4 acres**, all as more particularly outlined on a plat on file in the Office of Mineral Resources, Department of Natural Resources. All bearings, distances and coordinates are based on Louisiana Coordinate System of 1927, (North or South Zone), where applicable.

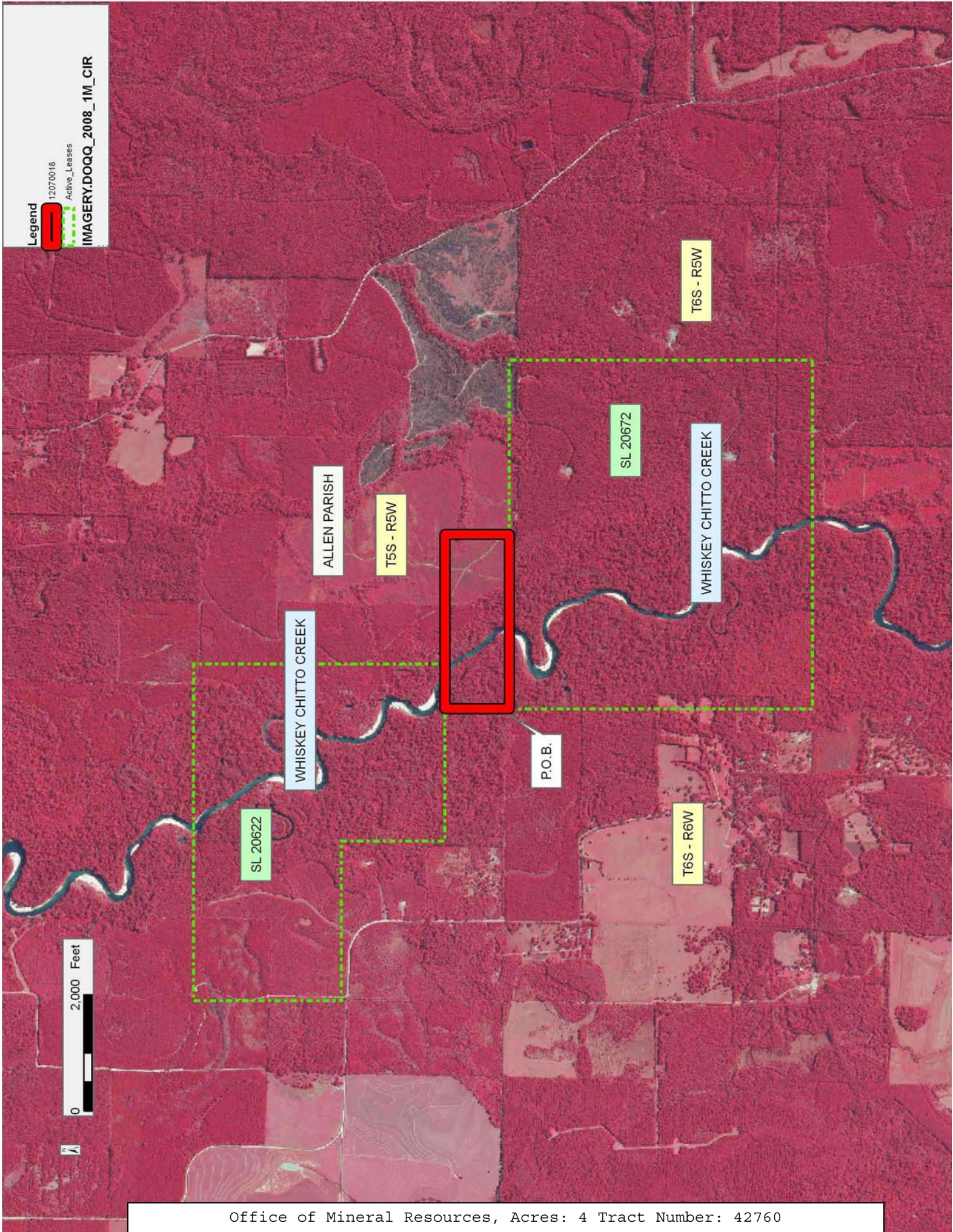
NOTE: The above description of the Tract nominated for lease has been provided and corrected, where required, exclusively by the nomination party. Any mineral lease selected from this Tract and awarded by the Louisiana State Mineral and Energy Board shall be without warranty of any kind, either express, implied, or statutory, including, but not limited to, the implied warranties of merchantability and fitness for a particular purpose. Should the mineral lease awarded by the Louisiana State Mineral and Energy Board be subsequently modified, cancelled or abrogated due to the existence of conflicting leases, operating agreements, private claims or other future obligations or conditions which may affect all or any portion of the leased Tract, it shall not relieve the Lessee of the obligation to pay any bonus due thereon to the Louisiana State Mineral and Energy Board, nor shall the Louisiana State Mineral and Energy Board be obligated to refund any consideration paid by the Lessor prior to such modification, cancellation, or abrogation, including, but not limited to, bonuses, rentals and royalties.

NOTE: The above Tract is located upon a restricted scenic river and all operations in this area must be conducted in strict conformity with the regulations of the Corps of Engineers, U.S. Army.

Applicant: HAROLD J. ANDERSON, INC.

Bidder	Cash Payment	Price/ Acre	Rental	Oil	Gas	Other







**TRACT 42761 - Allen Parish, Louisiana**

All of the lands now or formerly constituting the beds and bottoms of all water bodies of every nature and description as to which title is vested in the State of Louisiana, together with all islands arising therein and other lands formed by accretion or by reliction, where allowed by law, excepting tax adjudicated lands, and not presently under mineral lease on July 11, 2012, situated in Allen Parish, Louisiana, and more particularly described as follows: Beginning at a point having Coordinates of X = 1,491,300.00 and Y = 689,850.00; thence East 6,500.00 feet to the Southwest corner of State Lease No. 20672 having Coordinates of X = 1,497,800.00 and Y = 689,850.00; thence East 6,000.00 feet to the Southeast corner of said State Lease No. 20672 having Coordinates of X = 1,503,800.00 and Y = 689,850.00; thence South 18,000.00 feet to a point having Coordinates of X = 1,503,800.00 and Y = 671,850.00; thence West 12,500.00 feet to a point having Coordinates of X = 1,491,300.00 and Y = 671,850.00; thence North 18,000.00 feet to the point of beginning, containing approximately **89 acres**, all as more particularly outlined on a plat on file in the Office of Mineral Resources, Department of Natural Resources. All bearings, distances and coordinates are based on Louisiana Coordinate System of 1927, (North or South Zone), where applicable.

NOTE: The above description of the Tract nominated for lease has been provided and corrected, where required, exclusively by the nomination party. Any mineral lease selected from this Tract and awarded by the Louisiana State Mineral and Energy Board shall be without warranty of any kind, either express, implied, or statutory, including, but not limited to, the implied warranties of merchantability and fitness for a particular purpose. Should the mineral lease awarded by the Louisiana State Mineral and Energy Board be subsequently modified, cancelled or abrogated due to the existence of conflicting leases, operating agreements, private claims or other future obligations or conditions which may affect all or any portion of the leased Tract, it shall not relieve the Lessee of the obligation to pay any bonus due thereon to the Louisiana State Mineral and Energy Board, nor shall the Louisiana State Mineral and Energy Board be obligated to refund any consideration paid by the Lessor prior to such modification, cancellation, or abrogation, including, but not limited to, bonuses, rentals and royalties.

NOTE: The above Tract is located upon a restricted scenic river and all operations in this area must be conducted in strict conformity with the regulations of the Corps of Engineers, U.S. Army.



Applicant: HAROLD J. ANDERSON, INC.

Bidder	Cash Payment	Price/ Acre	Rental	Oil	Gas	Other

