

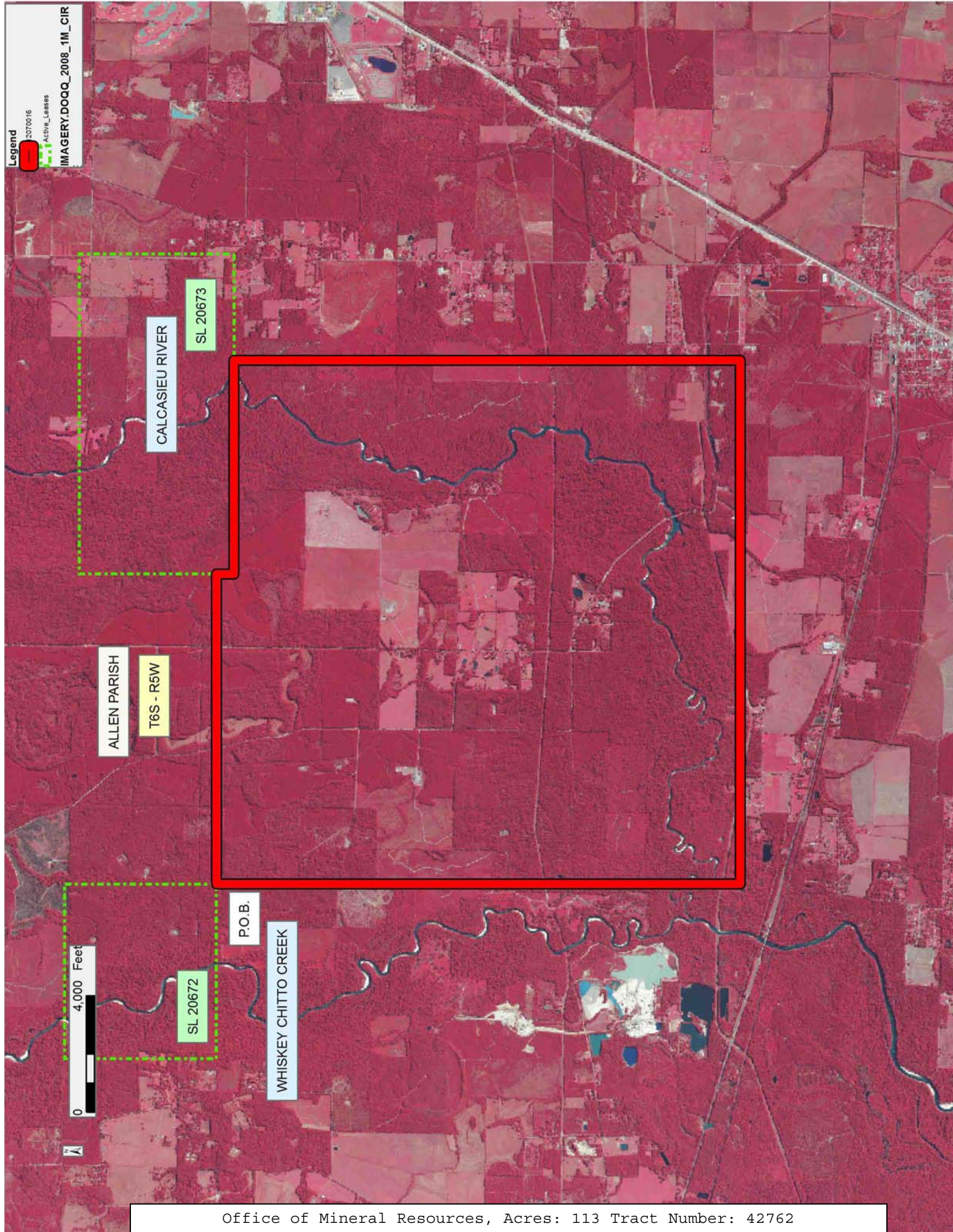
TRACT 42762 - Allen Parish, Louisiana

All of the lands now or formerly constituting the beds and bottoms of all water bodies of every nature and description as to which title is vested in the State of Louisiana, together with all islands arising therein and other lands formed by accretion or by reliction, where allowed by law, excepting tax adjudicated lands, and not presently under mineral lease on July 11, 2012, situated in Allen Parish, Louisiana, and more particularly described as follows: Beginning at a point being the Southeast corner of State Lease No. 20672 having Coordinates of X = 1,503,800.00 and Y = 689,850.00; thence East 10,650.00 feet to a point on the Western boundary of State Lease No. 20673 having Coordinates of X = 1,514,450.00 and Y = 689,850.00; thence along the boundary of said State Lease No. 20673 the following: South 600.00 feet to its Southwest corner having Coordinates of X = 1,514,450.00 and Y = 689,250.00, and East 7,350.00 feet to a point having Coordinates X = 1,521,800.00 and Y = 689,250.00; thence South 17,400.00 feet to a point having Coordinates X = 1,521,800.00 and Y = 671,850.00, thence West 18,000.00 feet to a point having Coordinates X = 1,503,800.00 and Y = 671,850.00, thence North 18,000.00 feet to the point of beginning, containing approximately **113 acres**, all as more particularly outlined on a plat on file in the Office of Mineral Resources, Department of Natural Resources. All bearings, distances and coordinates are based on Louisiana Coordinate System of 1927, (North or South Zone), where applicable.

NOTE: The above description of the Tract nominated for lease has been provided and corrected, where required, exclusively by the nomination party. Any mineral lease selected from this Tract and awarded by the Louisiana State Mineral and Energy Board shall be without warranty of any kind, either express, implied, or statutory, including, but not limited to, the implied warranties of merchantability and fitness for a particular purpose. Should the mineral lease awarded by the Louisiana State Mineral and Energy Board be subsequently modified, cancelled or abrogated due to the existence of conflicting leases, operating agreements, private claims or other future obligations or conditions which may affect all or any portion of the leased Tract, it shall not relieve the Lessee of the obligation to pay any bonus due thereon to the Louisiana State Mineral and Energy Board, nor shall the Louisiana State Mineral and Energy Board be obligated to refund any consideration paid by the Lessor prior to such modification, cancellation, or abrogation, including, but not limited to, bonuses, rentals and royalties.

Applicant: HAROLD J. ANDERSON, INC.

Bidder	Cash Payment	Price/Acre	Rental	Oil	Gas	Other



TRACT 42763 - Allen Parish, Louisiana

All of the lands now or formerly constituting the beds and bottoms of all water bodies of every nature and description as to which title is vested in the State of Louisiana, together with all islands arising therein and other lands formed by accretion or by reliction, where allowed by law, excepting tax adjudicated lands, and not presently under mineral lease on July 11, 2012, situated in Allen Parish, Louisiana, and more particularly described as follows: Beginning at a point having Coordinates of X = 1,485,000.00 and Y = 671,850.00; thence East 18,400.00 feet to a point having Coordinates of X = 1,503,400.00 and Y = 671,850.00; thence South 17,000.00 feet to a point having Coordinates of X = 1,503,400.00 and Y = 654,850.00; thence West 18,400.00 feet to a point having Coordinates of X = 1,485,000.00 and Y = 654,850.00; thence North 17,000.00 feet to the point of beginning, containing **124 acres**, all as more particularly outlined on a plat on file in the Office of Mineral Resources, Department of Natural Resources. All bearings, distances and coordinates are based on Louisiana Coordinate System of 1927, (North or South Zone), where applicable.

NOTE: The above description of the Tract nominated for lease has been provided and corrected, where required, exclusively by the nomination party. Any mineral lease selected from this Tract and awarded by the Louisiana State Mineral and Energy Board shall be without warranty of any kind, either express, implied, or statutory, including, but not limited to, the implied warranties of merchantability and fitness for a particular purpose. Should the mineral lease awarded by the Louisiana State Mineral and Energy Board be subsequently modified, cancelled or abrogated due to the existence of conflicting leases, operating agreements, private claims or other future obligations or conditions which may affect all or any portion of the leased Tract, it shall not relieve the Lessee of the obligation to pay any bonus due thereon to the Louisiana State Mineral and Energy Board, nor shall the Louisiana State Mineral and Energy Board be obligated to refund any consideration paid by the Lessor prior to such modification, cancellation, or abrogation, including, but not limited to, bonuses, rentals and royalties.

NOTE: The above Tract is located upon a restricted scenic river and all operations in this area must be conducted in strict conformity with the regulations of the Corps of Engineers, U.S. Army.

Applicant: HAROLD J. ANDERSON, INC.

Bidder	Cash Payment	Price/Acre	Rental	Oil	Gas	Other

T6S - R5W

CALCASIEU RIVER

T7S - R5W

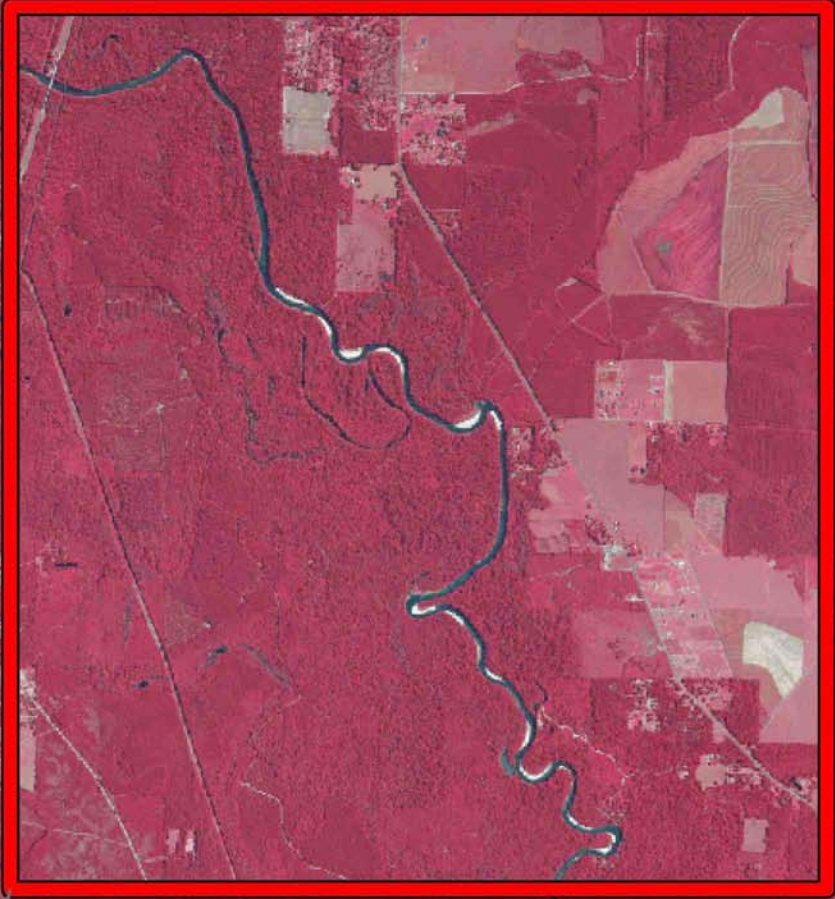
ALLEN PARISH

T6S - R6W

T7S - R6W

0 4,000 Feet

P.O.B.



TRACT 42764 - Allen Parish, Louisiana

All of the lands now or formerly constituting the beds and bottoms of all water bodies of every nature and description as to which title is vested in the State of Louisiana, together with all islands arising therein and other lands formed by accretion or by reliction, where allowed by law, excepting tax adjudicated lands, and not presently under mineral lease on July 11, 2012, situated in Allen Parish, Louisiana, and more particularly described as follows: Beginning at a point having Coordinates of X = 1,480,007.67 and Y = 662,625.16; thence East 4,992.33 feet to a point having Coordinates X = 1,485,000.00 and Y = 662,625.16; thence South 7,775.16 feet to a point having Coordinates X = 1,485,000.00 and Y = 654,850.00; thence West 4,965.04 feet to a point having Coordinates X = 1,480,034.96 and Y = 654,850.00; thence North 3,549.72 feet to a point being the Southeast corner of State Lease No. 14004, as amended, having Coordinates X = 1,480,034.96 and Y = 658,399.72; thence North 01 degrees 03 minutes 46 seconds West 1,471.42 feet along the East boundary of said State Lease No. 14004 to its Northeast corner having Coordinates X = 1,480,007.67 and Y = 659,870.89; thence North 2,754.27 feet to the point of beginning, containing **18 acres**, all as more particularly outlined on a plat on file in the Office of Mineral Resources, Department of Natural Resources. All bearings, distances and coordinates are based on Louisiana Coordinate System of 1927, (North or South Zone), where applicable.

NOTE: The above description of the Tract nominated for lease has been provided and corrected, where required, exclusively by the nomination party. Any mineral lease selected from this Tract and awarded by the Louisiana State Mineral and Energy Board shall be without warranty of any kind, either express, implied, or statutory, including, but not limited to, the implied warranties of merchantability and fitness for a particular purpose. Should the mineral lease awarded by the Louisiana State Mineral and Energy Board be subsequently modified, cancelled or abrogated due to the existence of conflicting leases, operating agreements, private claims or other future obligations or conditions which may affect all or any portion of the leased Tract, it shall not relieve the Lessee of the obligation to pay any bonus due thereon to the Louisiana State Mineral and Energy Board, nor shall the Louisiana State Mineral and Energy Board be obligated to refund any consideration paid by the Lessor prior to such modification, cancellation, or abrogation, including, but not limited to, bonuses, rentals and royalties.

NOTE: The above Tract is located upon a restricted scenic river and all operations in this area must be conducted in strict conformity with the regulations of the Corps of Engineers, U.S. Army.

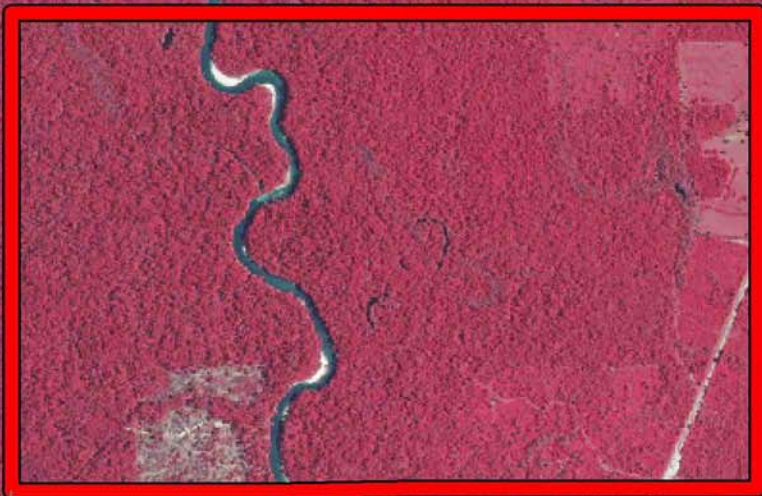
Applicant: HAROLD J. ANDERSON, INC.

Bidder	Cash Payment	Price/Acre	Rental	Oil	Gas	Other

ALLEN PARISH

T6S - R6W

CALCASIEU RIVER



P.O.B.

SL 14004

T7S - R6W

0 2,000 Feet

TRACT 42765 - - West Baton Rouge Parish, Louisiana

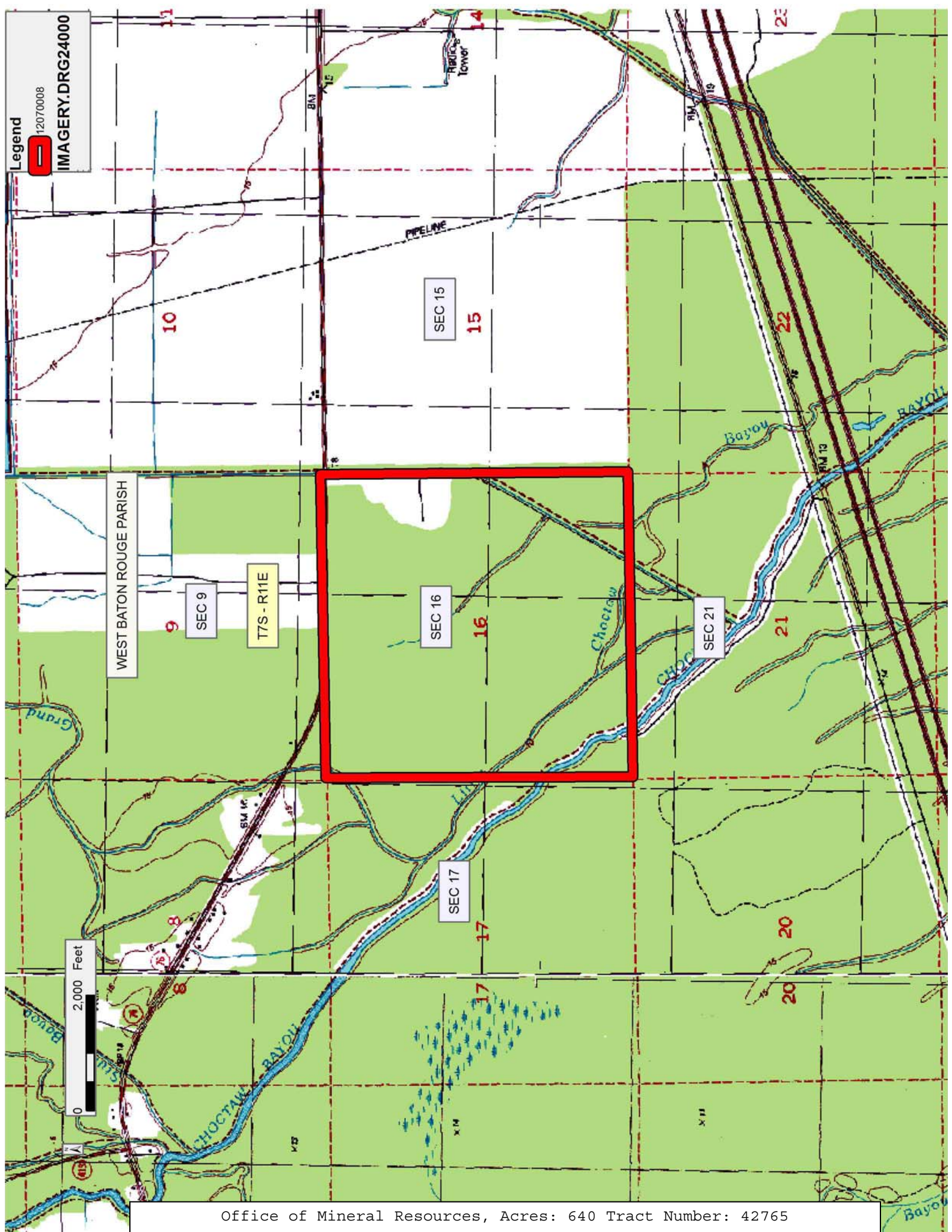
The State Mineral and Energy Board acting on behalf of the West Baton Rouge Parish School Board, pursuant to Resolution(s) adopted by that (those) body(ies) and in accordance with Louisiana Revised Statutes 30:121-136 and 151-156, as amended, and Article XIV, Section 16(A)(9) and (B) of the Louisiana Constitution of 1974, as same may be continued and promulgated in proper statutory form and, further, amended from time to time, advertises the lands not under mineral lease on July 11, 2012, excluding the beds and bottoms of all navigable water bodies located within the following: All or a portion of Section 16, Township 07 South, Range 11 East in West Baton Rouge Parish, Louisiana, containing approximately **640 acres**, all as more particularly outlined on a plat on file in the Office of Mineral Resources, Department of Natural Resources. All bearings, distances and coordinates are based on Louisiana Coordinate System of 1927, (North or South Zone).

NOTE: The above description of the Tract nominated for lease has been provided and corrected, where required, exclusively by the nomination party. Any mineral lease selected from this Tract and awarded by the Louisiana State Mineral and Energy Board shall be without warranty of any kind, either express, implied, or statutory, including, but not limited to, the implied warranties of merchantability and fitness for a particular purpose. Should the mineral lease awarded by the Louisiana State Mineral and Energy Board be subsequently modified, cancelled or abrogated due to the existence of conflicting leases, operating agreements, private claims or other future obligations or conditions which may affect all or any portion of the leased Tract, it shall not relieve the Lessee of the obligation to pay any bonus due thereon to the Louisiana State Mineral and Energy Board, nor shall the Louisiana State Mineral and Energy Board be obligated to refund any consideration paid by the Lessor prior to such modification, cancellation, or abrogation, including, but not limited to, bonuses, rentals and royalties.

NOTE: The Office of Mineral Resources will require a minimum bonus of \$200 per acre and a minimum royalty of 25%.

Applicant: THEOPHILUS OIL, GAS & LAND SERVICES, LLC

Bidder	Cash Payment	Price/Acre	Rental	Oil	Gas	Other



Legend
 1:2070008
 IMAGERY.DRG24000

WEST BATON ROUGE PARISH

T7S - R11E

2,000 Feet

TRACT 42766 - Allen Parish, Louisiana

All of the lands now or formerly constituting the beds and bottoms of all water bodies of every nature and description as to which title is vested in the State of Louisiana, together with all islands arising therein and other lands formed by accretion or by reliction, where allowed by law, excepting tax adjudicated lands, and not presently under mineral lease on July 11, 2012, situated in Allen Parish, Louisiana, and more particularly described as follows: Beginning at a point having Coordinates of X = 1,470,536.92 and Y = 662,625.16; thence East 9,470.75 feet to a point having Coordinates X = 1,480,007.67 and Y = 662,625.16; thence South 2,754.27 feet to a point being the Northeast corner of State Lease No. 14004, as amended, having Coordinates of X = 1,480,007.67 and Y = 659,870.89; thence along the boundary of said State Lease No. 14004 as follows: North 88 degrees 47 minutes 38 seconds West 1,337.25 feet to a point having Coordinates of X = 1,478,670.73 and Y = 659,899.03, North 88 degrees 21 minutes 45 seconds West 1,336.36 feet to a point having Coordinates of X = 1,477,334.91 and Y = 659,937.22, South 00 degrees 57 minutes 03 seconds East 1,455.21 feet to a point having Coordinates of X = 1,477,359.06 and Y = 658,482.21, and South 88 degrees 14 minutes 04 seconds East 2,677.17 feet to its Southeast corner having Coordinates X = 1,480,034.96 and Y = 658,399.72; thence South 3,549.72 feet to a point having Coordinates X = 1,480,034.96 and Y = 654,850.00; thence West 9,498.04 feet to a point having Coordinates X = 1,470,536.92 and Y = 654,850.00; thence North 7,775.16 feet to the point of beginning, containing **19 acres**, all as more particularly outlined on a plat on file in the Office of Mineral Resources, Department of Natural Resources. All bearings, distances and coordinates are based on Louisiana Coordinate System of 1927, (North or South Zone), where applicable.

NOTE: The above description of the Tract nominated for lease has been provided and corrected, where required, exclusively by the nomination party. Any mineral lease selected from this Tract and awarded by the Louisiana State Mineral and Energy Board shall be without warranty of any kind, either express, implied, or statutory, including, but not limited to, the implied warranties of merchantability and fitness for a particular purpose. Should the mineral lease awarded by the Louisiana State Mineral and Energy Board be subsequently modified, cancelled or abrogated due to the existence of conflicting leases, operating agreements, private claims or other future obligations or conditions which may affect all or any portion of the leased Tract, it shall not relieve the Lessee of the obligation to pay any bonus due thereon to the Louisiana State Mineral and Energy Board, nor shall the Louisiana State Mineral and Energy Board be obligated to refund any consideration paid by the Lessor prior to such modification, cancellation, or abrogation, including, but not limited to, bonuses, rentals and royalties.

NOTE: The above Tract is located upon a restricted scenic river and all operations in this area must be conducted in strict conformity with the regulations of the Corps of Engineers, U.S. Army.

Applicant: HAROLD J. ANDERSON, INC.

Bidder	Cash Payment	Price/Acre	Rental	Oil	Gas	Other

0 2,000 Feet



ALLEN PARISH

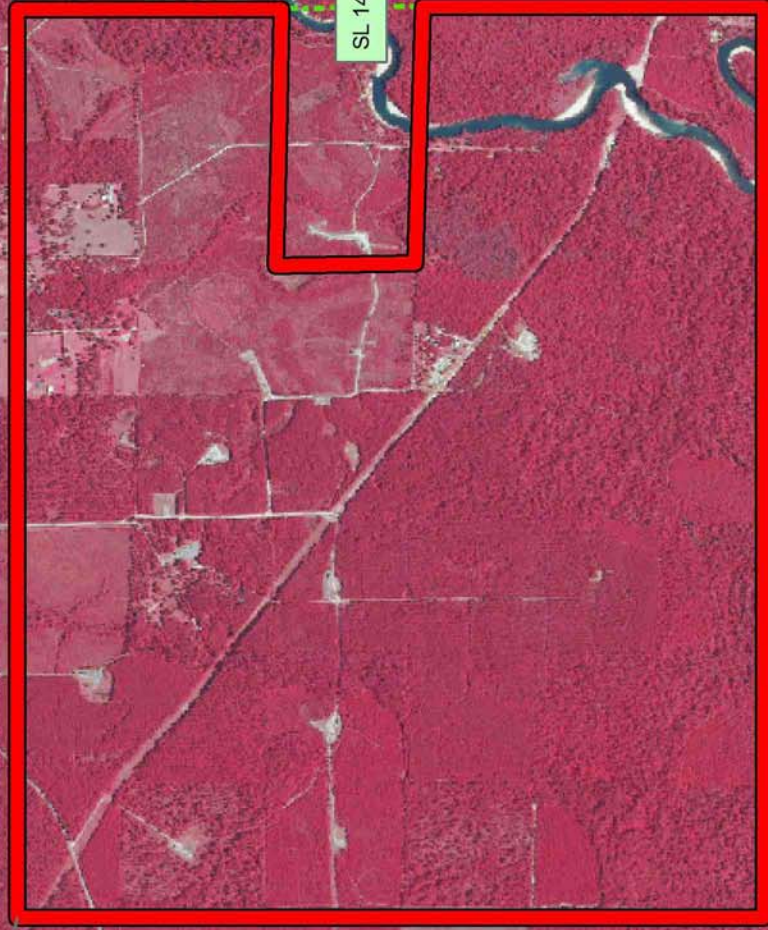
T6S - R6W

T7S - R6W

CALCASIEU RIVER

SL 14004

P.O.B.



TRACT 42767 - Allen and Jefferson Davis Parishes, Louisiana

All of the lands now or formerly constituting the beds and bottoms of all water bodies of every nature and description as to which title is vested in the State of Louisiana, together with all islands arising therein and other lands formed by accretion or by reliction, where allowed by law, excepting tax adjudicated lands, and not presently under mineral lease on July 11, 2012, situated in Allen and Jefferson Davis Parishes, Louisiana, and more particularly described as follows: Beginning at a point having Coordinates of X = 1,464,336.92 and Y = 639,850.00; thence North 15,000.00 feet to a point having Coordinates of X = 1,464,336.92 and Y = 654,850.00; thence East 16,200.00 feet to a point having Coordinates of X = 1,480,536.92 and Y = 654,850.00; thence South 15,000.00 feet to a point having Coordinates of X = 1,480,536.92 and Y = 639,850.00; thence West 16,200.00 feet to the point of beginning, **LESS AND EXCEPT** any right, title, and interest in lands owned by and not under lease from the State of Louisiana, on behalf of the Allen Parish School Board, situated in Section 16, Township 7 South, Range 6 West, Allen Parish, Louisiana, contained within the above described tract, containing **102 acres**, all as more particularly outlined on a plat on file in the Office of Mineral Resources, Department of Natural Resources. All bearings, distances and coordinates are based on Louisiana Coordinate System of 1927, (North or South Zone), where applicable.

NOTE: The above description of the Tract nominated for lease has been provided and corrected, where required, exclusively by the nomination party. Any mineral lease selected from this Tract and awarded by the Louisiana State Mineral and Energy Board shall be without warranty of any kind, either express, implied, or statutory, including, but not limited to, the implied warranties of merchantability and fitness for a particular purpose. Should the mineral lease awarded by the Louisiana State Mineral and Energy Board be subsequently modified, cancelled or abrogated due to the existence of conflicting leases, operating agreements, private claims or other future obligations or conditions which may affect all or any portion of the leased Tract, it shall not relieve the Lessee of the obligation to pay any bonus due thereon to the Louisiana State Mineral and Energy Board, nor shall the Louisiana State Mineral and Energy Board be obligated to refund any consideration paid by the Lessor prior to such modification, cancellation, or abrogation, including, but not limited to, bonuses, rentals and royalties.

NOTE: The above Tract is located upon a restricted scenic river and all operations in this area must be conducted in strict conformity with the regulations of the Corps of Engineers, U.S. Army.

Applicant: HAROLD J. ANDERSON, INC.

Bidder	Cash Payment	Price/Acre	Rental	Oil	Gas	Other

Legend

12070026

Counties

IMAGERY.DOQQ_2008_1M_CIR



0 4,000 Feet



CALCASIEU RIVER

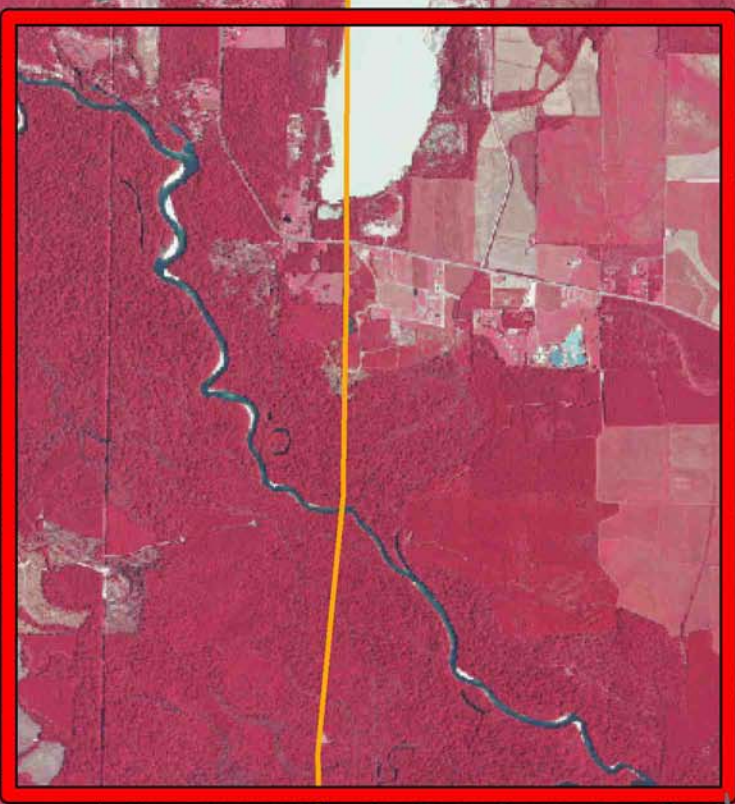
ALLEN PARISH

JEFFERSON DAVIS PARISH

T7S - R6W

T7S - R7W

P.O.B.



TRACT 42768 - Jefferson Davis Parish, Louisiana

All of the lands now or formerly constituting the beds and bottoms of all water bodies of every nature and description as to which title is vested in the State of Louisiana, together with all islands arising therein and other lands formed by accretion or by reliction, where allowed by law, excepting tax adjudicated lands, and not presently under mineral lease on July 11, 2012, situated in Jefferson Davis Parish, Louisiana, and more particularly described as follows: Beginning at the Northwest corner having Lambert plane Coordinates of X = 1,476,875.00 and Y = 639,850.00; thence East 18,000.00 feet to a point having Coordinates X = 1,494,875.00 and Y = 639,850.42; thence South 6,886.00 feet to a point on the Northern boundary of State Lease No. 20825 having Coordinates X = 1,494,875.00 and Y = 632,964.00; thence West 3,000.00 feet to the Northwest corner of said State Lease No. 20825 having Coordinates X = 1,491,875.00 and Y = 632,964.00; thence South 1,364.00 feet to the Southwest corner of said State Lease No. 20825 having Coordinates X = 1,491,875.00 and Y = 630,446.00; thence West 15,000.00 feet to the a point having Coordinates of X = 1,476,875.00 and Y = 630,446.00; thence North 9,404.00 feet back to the point of beginning, containing **29 acres**, all as more particularly outlined on a plat on file in the Office of Mineral Resources, Department of Natural Resources. All bearings, distances and coordinates are based on Louisiana Coordinate System of 1927, (North or South Zone), where applicable.

NOTE: The above description of the Tract nominated for lease has been provided and corrected, where required, exclusively by the nomination party. Any mineral lease selected from this Tract and awarded by the Louisiana State Mineral and Energy Board shall be without warranty of any kind, either express, implied, or statutory, including, but not limited to, the implied warranties of merchantability and fitness for a particular purpose. Should the mineral lease awarded by the Louisiana State Mineral and Energy Board be subsequently modified, cancelled or abrogated due to the existence of conflicting leases, operating agreements, private claims or other future obligations or conditions which may affect all or any portion of the leased Tract, it shall not relieve the Lessee of the obligation to pay any bonus due thereon to the Louisiana State Mineral and Energy Board, nor shall the Louisiana State Mineral and Energy Board be obligated to refund any consideration paid by the Lessor prior to such modification, cancellation, or abrogation, including, but not limited to, bonuses, rentals and royalties.

Applicant: HAROLD J. ANDERSON, INC.

Bidder	Cash Payment	Price/Acre	Rental	Oil	Gas	Other

Legend

12070028



Active_Leases

IMAGERY.DOQQ_2008_1M_CIR

0 3,000 Feet



JEFFERSON DAVIS PARISH

T7S - R6W

P.O.B.

SL 20825

BAYOU SERPENT

T8S - R6W

TRACT 42769 - Jefferson Parish, Louisiana

All of the lands now or formerly constituting the beds and bottoms of all water bodies of every nature and description as to which title is vested in the State of Louisiana, together with all islands arising therein and other lands formed by accretion or by reliction, where allowed by law, excepting tax adjudicated lands, and not presently under mineral lease on July 11, 2012, situated in Jefferson Parish, Louisiana, and more particularly described as follows: Beginning at a point having Coordinates of X = 2,375,672.00 and Y = 401,324.00; thence East 12,445.00 feet to a point having Coordinates of X = 2,388,117.00 and Y = 401,324.00; thence South 14,419.00 feet to a point having Coordinates of X = 2,388,117.00 and Y = 386,905.00; thence South 59 degrees 01 minutes 57 seconds West 728.98 feet to the Northeast corner of State Lease No. 20431 having Coordinates of X = 2,387,491.93 and Y = 386,529.90; thence along the boundary of said State Lease No. 20431 the following courses: South 59 degrees 01 minutes 51 seconds West 1,395.82 feet and South 72 degrees 49 minutes 36 seconds West 2,091.95 feet to its Northwest corner having Coordinates of X = 2,384,296.42 and Y = 385,193.97; thence South 72 degrees 49 minutes 26 seconds West 2,295.80 feet to a point having Coordinates of X = 2,382,103.00 and Y = 384,516.00; thence West 6,431.00 feet to a point having Coordinates of X = 2,375,672.00 and Y = 384,516.00; thence North 16,808.00 feet to the point of beginning, containing approximately **328 acres**, all as more particularly outlined on a plat on file in the Office of Mineral Resources, Department of Natural Resources. All bearings, distances and coordinates are based on Louisiana Coordinate System of 1927, (North or South Zone), where applicable.

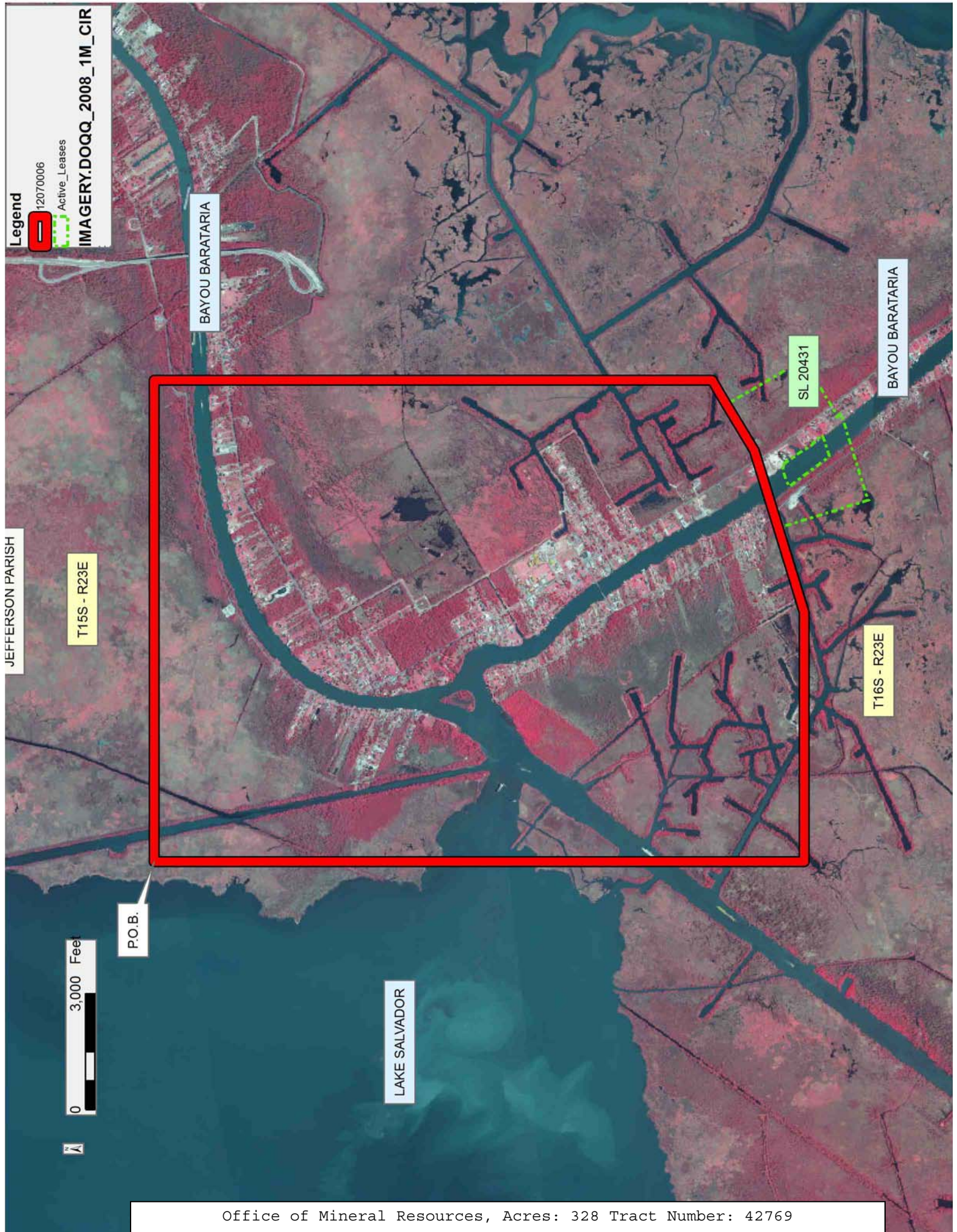
NOTE: The above description of the Tract nominated for lease has been provided and corrected, where required, exclusively by the nomination party. Any mineral lease selected from this Tract and awarded by the Louisiana State Mineral and Energy Board shall be without warranty of any kind, either express, implied, or statutory, including, but not limited to, the implied warranties of merchantability and fitness for a particular purpose. Should the mineral lease awarded by the Louisiana State Mineral and Energy Board be subsequently modified, cancelled or abrogated due to the existence of conflicting leases, operating agreements, private claims or other future obligations or conditions which may affect all or any portion of the leased Tract, it shall not relieve the Lessee of the obligation to pay any bonus due thereon to the Louisiana State Mineral and Energy Board, nor shall the Louisiana State Mineral and Energy Board be obligated to refund any consideration paid by the Lessor prior to such modification, cancellation, or abrogation, including, but not limited to, bonuses, rentals and royalties.

NOTE: The State of Louisiana does hereby reserve, and this lease shall be subject to, the imprescriptible right of surface use in the nature of a servitude in favor of the Department of Natural Resources, including its Offices and Commissions, for the sole purpose of implementing, constructing, servicing and maintaining approved coastal zone management

and/or restoration projects. Utilization of any and all rights derived under this lease by the mineral lessee, its agents, successors or assigns, shall not interfere with nor hinder the reasonable surface use by the Department of Natural Resources, its Offices or Commissions, as herein above reserved.

Applicant: IHDW ENERGY COMPANY

Bidder	Cash Payment	Price/Acre	Rental	Oil	Gas	Other



Legend

12070006



Active_Leases

IMAGERY.DOQQ_2008_1M_CIR

JEFFERSON PARISH

T15S - R23E

BAYOU BARATARIA

SL 20431

BAYOU BARATARIA

T16S - R23E

P.O.B.

3,000 Feet

LAKE SALVADOR

TRACT 42770 - Jefferson and Plaquemines Parishes, Louisiana

All of the lands now or formerly constituting the beds and bottoms of all water bodies of every nature and description as to which title is vested in the State of Louisiana, together with all islands arising therein and other lands formed by accretion or by reliction, where allowed by law, excepting tax adjudicated lands, and not presently under mineral lease on July 11, 2012, situated in Jefferson and Plaquemines Parishes, Louisiana, and more particularly described as follows: Beginning at a point having Coordinates of X = 2,450,688.81 and Y = 276,246.70; thence South 8,486.57 feet to a point having Coordinates of X = 2,450,688.81 and Y = 267,760.13; thence West 4,669.25 feet to the Northeast corner of State Lease No. 20070 having Coordinates of X = 2,446,019.55 and Y = 267,760.13; thence West 3,517.00 feet along the North boundary of said State Lease No. 20070 to the Northeast corner of State Lease No. 20071 having Coordinates of X = 2,442,502.55 and Y = 267,760.13; thence West 3,320.00 feet along the North boundary of said State Lease No. 20071 to the Easternmost Northeast corner of State Lease No. 20069 having Coordinates of X = 2,439,182.55 and Y = 267,760.13; thence along the boundary of said State Lease No. 20069 the following courses: West 4,050.53 feet to a point having Coordinates of X = 2,435,132.02 and Y = 267,760.13 and North 809.87 feet to the Southeast corner of State Lease No. 15744, as amended, having Coordinates of X = 2,435,132.02 and Y = 268,570.00; thence North 3,234.63 feet along the East boundary of said State Lease No. 15744 to the Southeast corner of State Lease No. 15631, as amended, having Coordinates of X = 2,435,132.02 and Y = 271,804.63; thence North 3,034.77 feet along the East boundary of said State Lease No. 15631 to the Southwest corner of State Lease No. 14534 having Coordinates of X = 2,435,132.02 and Y = 274,839.40; thence East 3,027.18 feet along the South boundary of said State Lease No. 14534 to a point on the West boundary of State Lease No. 14374 having Coordinates of X = 2,438,159.20 and Y = 274,839.40; thence along the boundary of said State Lease No. 14374 the following courses: South 00 degrees 38 minutes 42 seconds East 926.14 feet to a point having Coordinates of X = 2,438,169.63 and Y = 273,913.32; South 87 degrees 51 minutes 11 seconds East 1,007.65 feet to a point having Coordinates of X = 2,439,176.57 and Y = 273,875.57 and North 00 degrees 41 minutes 45 seconds West 168.83 feet to the Westernmost Southwest corner of State Lease No. 3035, as amended, having Coordinates of X = 2,439,174.52 and Y = 274,044.39; thence along the boundary of said State Lease No. 3035 the following courses: East 3,140.48 feet to a point having Coordinates of X = 2,442,315.00 and Y = 274,044.39; South 620.74 feet to a point having Coordinates of X = 2,442,315.00 and Y = 273,423.65; North 89 degrees 18 minutes 08 seconds East 2,987.32 feet to a point having Coordinates of X = 2,445,302.10 and Y = 273,460.04; North 30 degrees 27 minutes 46 seconds East 301.59 feet to a point having Coordinates of X = 2,445,455.00 and Y = 273,720.00; North 20 degrees 28 minutes 03 seconds East 757.84 feet to a point having Coordinates of X = 2,445,720.00 and Y = 274,430.00; North 14 degrees 25 minutes 15 seconds East 361.39 feet to a point having Coordinates of X = 2,445,810.00 and Y = 274,780.00; North 08 degrees 30 minutes 17 seconds East 540.95 feet to a point having Coordinates of X = 2,445,890.00 and Y =

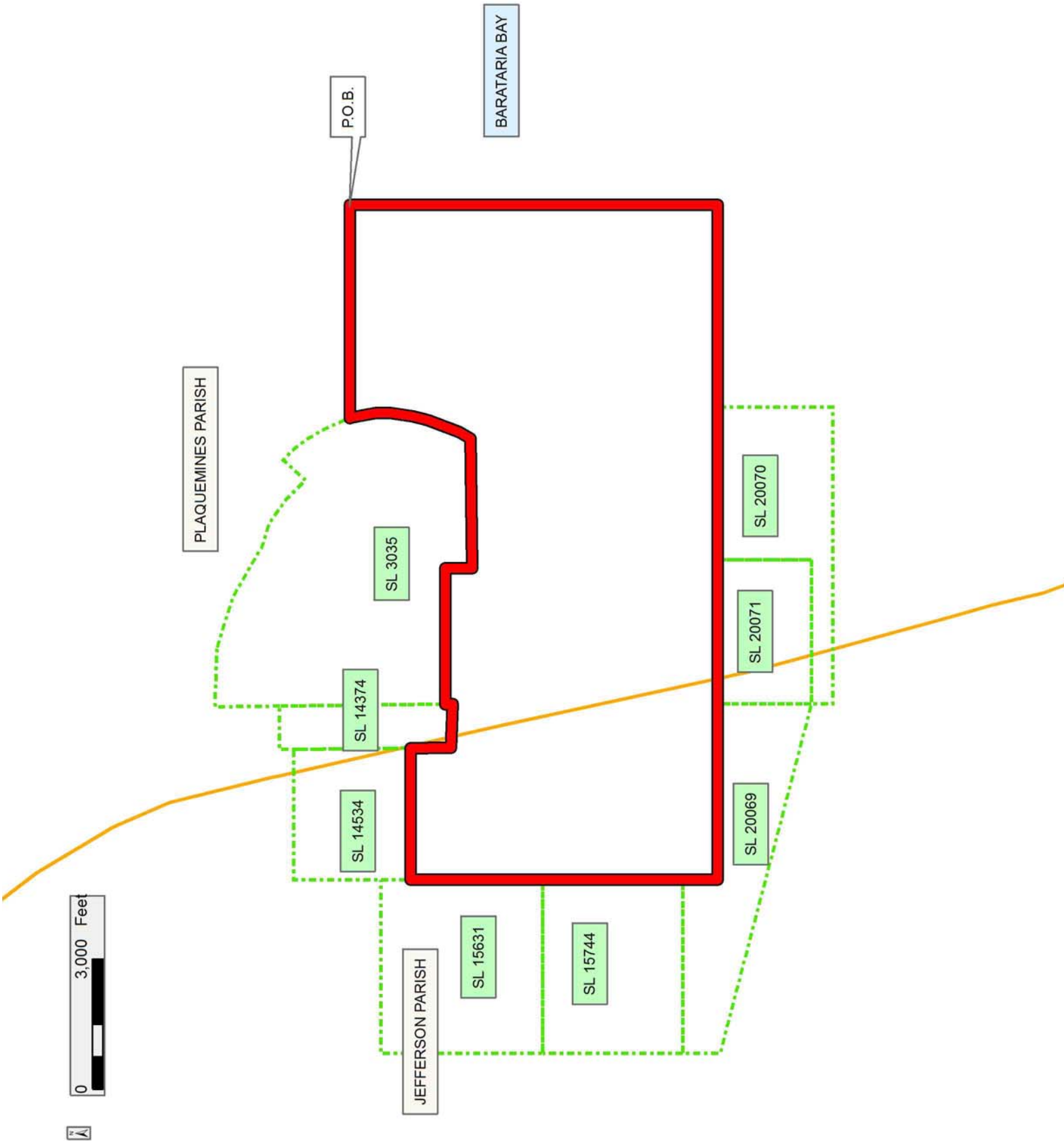
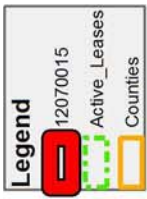
275,315.00; North 00 degrees 52 minutes 53 seconds East 325.04 feet to a point having Coordinates of X = 2,445,895.00 and Y = 275,640.00; North 11 degrees 01 minutes 46 seconds West 601.10 feet to a point having Coordinates of X = 2,445,780.00 and Y = 276,230.00 and North 23 degrees 22 minutes 27 seconds West 18.19 feet to a point having Coordinates of X = 2,445,772.78 and Y = 276,246.70; thence East 4,916.02 feet to the point of beginning, containing approximately **2,499.82 acres**, all as more particularly outlined on a plat on file in the Office of Mineral Resources, Department of Natural Resources. All bearings, distances and coordinates are based on Louisiana Coordinate System of 1927, (North or South Zone), where applicable.

NOTE: The above description of the Tract nominated for lease has been provided and corrected, where required, exclusively by the nomination party. Any mineral lease selected from this Tract and awarded by the Louisiana State Mineral and Energy Board shall be without warranty of any kind, either express, implied, or statutory, including, but not limited to, the implied warranties of merchantability and fitness for a particular purpose. Should the mineral lease awarded by the Louisiana State Mineral and Energy Board be subsequently modified, cancelled or abrogated due to the existence of conflicting leases, operating agreements, private claims or other future obligations or conditions which may affect all or any portion of the leased Tract, it shall not relieve the Lessee of the obligation to pay any bonus due thereon to the Louisiana State Mineral and Energy Board, nor shall the Louisiana State Mineral and Energy Board be obligated to refund any consideration paid by the Lessor prior to such modification, cancellation, or abrogation, including, but not limited to, bonuses, rentals and royalties.

NOTE: The State of Louisiana does hereby reserve, and this lease shall be subject to, the imprescriptible right of surface use in the nature of a servitude in favor of the Department of Natural Resources, including its Offices and Commissions, for the sole purpose of implementing, constructing, servicing and maintaining approved coastal zone management and/or restoration projects. Utilization of any and all rights derived under this lease by the mineral lessee, its agents, successors or assigns, shall not interfere with nor hinder the reasonable surface use by the Department of Natural Resources, its Offices or Commissions, as herein above reserved.

Applicant: T. M. B. LAND SERVICES

Bidder	Cash Payment	Price/Acre	Rental	Oil	Gas	Other



TRACT 42771 - Plaquemines Parish, Louisiana

All of the lands now or formerly constituting the beds and bottoms of all water bodies of every nature and description as to which title is vested in the State of Louisiana, together with all islands arising therein and other lands formed by accretion or by reliction, where allowed by law, excepting tax adjudicated lands, and not presently under mineral lease on July 11, 2012, situated in Plaquemines Parish, Louisiana, and more particularly described as follows: Beginning at a point having Coordinates of X = 2,450,688.81 and Y = 276,246.70; thence East 6,540.19 feet to a point on the Southern boundary of State Lease No. 18688 having Coordinates of X = 2,457,228.99 and Y = 276,246.70; thence South 73 degrees 20 minutes 43 seconds East 1,086.59 feet along the Southern boundary of said State Lease No. 18688 to its Southeast corner, also being the Southwest corner of State Lease No. 18671 having Coordinates of X = 2,458,270.00 and Y = 275,935.28; thence South 73 degrees 10 minutes 42 seconds East 6,452.09 feet along the Southern boundary of said State Lease No. 18671 to a point having Coordinates of X = 2,464,446.00 and Y = 274,068.07; thence South 6,307.94 feet to a point having Coordinates of X = 2,464,446.00 and Y = 267,760.13; thence West 13,757.19 feet to a point having Coordinates of X = 2,450,688.81 and Y = 267,760.13; thence North 8,486.57 feet to the point of beginning, containing approximately **2,500.00 acres**, all as more particularly outlined on a plat on file in the Office of Mineral Resources, Department of Natural Resources. All bearings, distances and coordinates are based on Louisiana Coordinate System of 1927, (North or South Zone), where applicable.

NOTE: The above description of the Tract nominated for lease has been provided and corrected, where required, exclusively by the nomination party. Any mineral lease selected from this Tract and awarded by the Louisiana State Mineral and Energy Board shall be without warranty of any kind, either express, implied, or statutory, including, but not limited to, the implied warranties of merchantability and fitness for a particular purpose. Should the mineral lease awarded by the Louisiana State Mineral and Energy Board be subsequently modified, cancelled or abrogated due to the existence of conflicting leases, operating agreements, private claims or other future obligations or conditions which may affect all or any portion of the leased Tract, it shall not relieve the Lessee of the obligation to pay any bonus due thereon to the Louisiana State Mineral and Energy Board, nor shall the Louisiana State Mineral and Energy Board be obligated to refund any consideration paid by the Lessor prior to such modification, cancellation, or abrogation, including, but not limited to, bonuses, rentals and royalties.

NOTE: The State of Louisiana does hereby reserve, and this lease shall be subject to, the imprescriptible right of surface use in the nature of a servitude in favor of the Department of Natural Resources, including its Offices and Commissions, for the sole purpose of implementing, constructing, servicing and maintaining approved coastal zone management and/or restoration projects. Utilization of any and all rights derived

under this lease by the mineral lessee, its agents, successors or assigns, shall not interfere with nor hinder the reasonable surface use by the Department of Natural Resources, its Offices or Commissions, as herein above reserved.

Applicant: T. M. B. LAND SERVICES

Bidder	Cash Payment	Price/Acre	Rental	Oil	Gas	Other

Legend
12070014
Active_Leases

