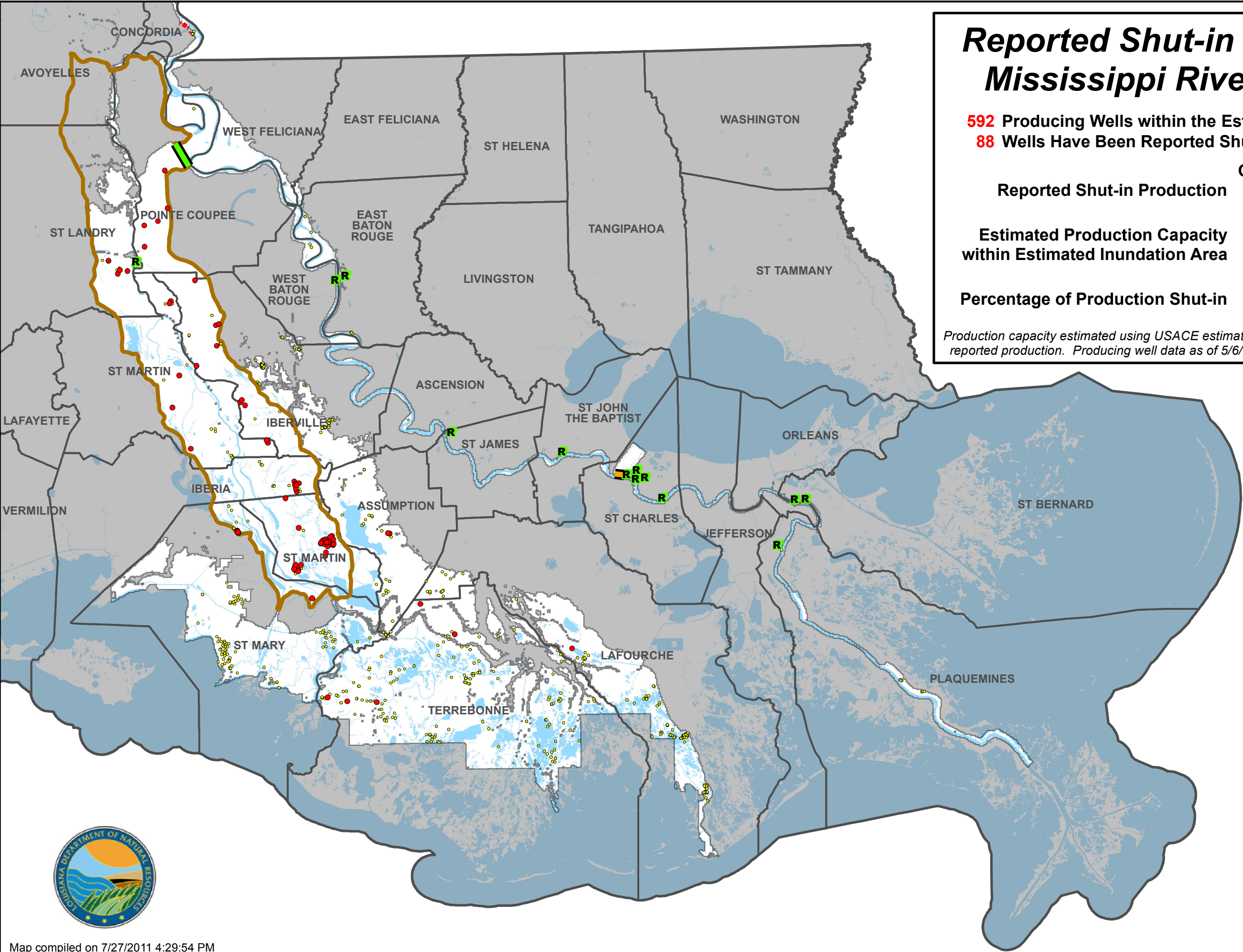


Reported Shut-in Wells Due to the Mississippi River Flood of 2011

592 Producing Wells within the Estimated Inundation Area of which
88 Wells Have Been Reported Shut-in by Operators

	Oil (bbls./day)	Gas (MMcf/day)
Reported Shut-in Production	1,787.2	17.35
Estimated Production Capacity within Estimated Inundation Area	19,278	252.6
Percentage of Production Shut-in	9.3%	6.9%

Production capacity estimated using USACE estimated inundation area (Morganza at 50%) and 2010 reported production. Producing well data as of 5/6/11. Reported shut-in well data as of 07/27/2011.



- Reported Shut-in Well
- Producing Well
- R** Refinery
- Old River Control Structure
- Morganza Spillway Structure
- Bonnet Carré Spillway Structure
- Atchafalaya Basin
- USACE Estimated Inundation Area
- Parish Boundary

