

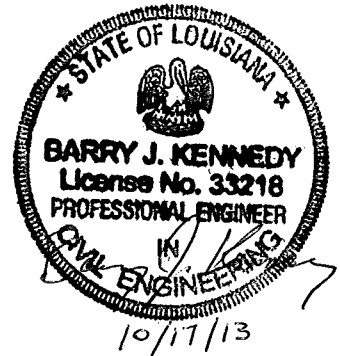
ADDENDUM No. 1 TO PLANS AND CONTRACT DOCUMENTS

FOR

**EAST MARSH ISLAND MARSH CREATION
POST-CONSTRUCTION MAINTENACE EVENT**

CWPPRA NUMBER: TV-21

IBERIA PARISH, LOUISIANA



OCTOBER 18, 2013

COASTAL PROTECTION AND RESTORATION AUTHORITY

**ADDENDUM TO BID DOCUMENTS
EAST MARSH ISLAND MARSH CREATION
POST-CONSTRUCTION MAINTENANCE EVENT
IN IBERIA PARISH, LOUISIANA
CWPPRA NUMBER: TV-21**

The clarifications, responses, to Contractor questions, and revisions to the Plans and Specifications provided in this addendum supersede the requirements of the Plans and Specifications dated August 1, 2013 Replacement Plan Sheets are provided in Attachment A.

1. Clarification on Items Discussed at the Mandatory Pre-Bid Conference:

- 1.1.** Access to remove the Timber Mats is shown on the Plans and will remain as such. The contractor is required to remain between the containment dike centerline and within 50.0 ft. to the North of the containment dike centerline.
- 1.2.** The Plans and Specifications will be updated to clarify the material replacement of the rock plug shall be **within** the pre-construction lines, grades, and elevations.
- 1.3.** Material used for existing containment dike repair shall **only** be sourced from the East-West Canal and the remnant borrow canal adjacent to the shoreline protection features shown in the Plans.
- 1.4.** Material dredged from the East-West Canal may be “Side-Cast” the entire length of the canal. See Plan Sheets 4 through 7 in Attachment A of this Addendum.
- 1.5.** Bid Item TS-8 Containment Dike Repair (Shoreline Protection) shall only be paid on a linear foot basis as currently stated in the Plans and Specifications.
- 1.6.** A question regarding Note 5 on Plan Sheet 8 was discussed. Dredging of the North-South Canal shall be strictly limited to wheel-washing or minor dredging to allow direct access to the Rock Plug. This dredging is permitted, with approval from the ENGINEER, if found compliant with the consistency permit issued for original construction of the project. The material dredged from the North-South Canal shall not be used as a fill or a borrow source.
- 1.7.** An inconsistency in dredging limits was brought to attention. These inconsistencies have been addressed and shown on the revised Plan sheets presented in Attachment A of this Addendum.

1.8. The access route and borrow areas for this project were selected because they were able to be permitted through a slight modification of the consistency permit governing the original TV-21 project. Any proposed alternate methods for borrow excavation and access must comply with the consistency permit modification issued for this project. No excavation outside the limits shown on the Plans will be permitted.

2. Questions Submitted by Potential Bidders:

No Questions were submitted by Potential Bidders before the Deadline stated in the Specifications.

3. Revisions to the Specifications:

3.1. SP-14 Insurance and Bonds – Replace Section 14.2.3 and 14.2.4 with the following:

14.2.3 AUTOMOBILE AND WATERCRAFT LIABILITY

Automobile Liability Insurance and Watercraft Liability Insurance shall have a minimum combined single limit per occurrence of \$1,000,000. ISO form number CA 00 01 (current form approved for use in Louisiana), or equivalent, is to be used in the policy. This insurance shall include third-party bodily injury and property damage liability for owned, hired and non-owned automobiles and/or watercraft. If any non-licensed motor vehicles and/or watercraft are engaged in operations within the terms of the contract on the site of the work to be performed thereunder, such insurance shall cover the use of any such vehicles.

NOTE: If the Contractor does not own automobiles and/or watercraft, and such vehicles are utilized in the execution of the contract, then hired and non-owned coverage is acceptable. If automobiles and/or watercraft are not utilized in the execution of the contract, then automobile and/or watercraft coverage is not required.

14.2.4 EXCESS UMBRELLA

Excess Umbrella Insurance may be used to meet the minimum requirements for General Liability, Automobile Liability, and Watercraft Liability only.

3.2. SP-2 Work to be Done – Replace Section 2.1.7 with the following:

2.1.7 Containment Dike Repair (Shoreline Protection) – An existing containment dike shall be repaired by excavating material from the remnant borrow canal adjacent to the containment dike or from the East-West Canal shown in the Plans. The repaired containment dike will then be utilized as the foundation for the woven geotextile fabric and articulated concrete mats.

3.3. TS-2 Construction Surveys – Replace 2.3.1 with the following:

2.3.1 Containment Dike Repair: The repaired containment dikes shall be surveyed on days 1 and 7 after the final lift of material has been placed on each of the existing containment dike reach shown in the Plans. The crown and toes of the repaired containment dike shall be surveyed at 100-foot intervals along the baseline as shown in the Plans. Points of inflection along the containment dike alignment shall also be surveyed. The ENGINEER shall determine if modification is necessary or acceptance is granted based on these surveys. Those portions of existing containment dike which are impacted or degraded during construction must also be resurveyed.

3.4. TS-4 Timber Mat Removal – Replace Section 4.6 with the following:

4.6 Finish Grading: The remnant containment dike shall be degraded to the lines, grades, and elevations specified in the Plans, or as instructed by the L.D.W.F. Inspector. The Contractor shall be responsible for repairing impacts due to construction which are deemed “excessive” by the ENGINEER or INSPECTOR, at no direct pay.

4. Revisions to the Plans:

4.1. All revisions to the Plans are described in the title block of the revised plan sheets included as part of this addendum.

5. Sign-In Sheet

5.1. The attendance record for the mandatory pre-bid conference held on October 9, 2013 at the CPRA – Lafayette Regional Office is included in this Addendum as Attachment B.

ATTACHMENT A

Revised Plan Sheets

GENERAL NOTES

1. TYPE OF CONSTRUCTION IS CLASSIFICATION III (HEAVY CONSTRUCTION) SHORELINE PROTECTION.
2. ALL ELEVATIONS ARE GIVEN IN THE NORTH AMERICAN VERTICAL DATUM OF 1988 (NAVD 88), U.S. SURVEY FEET. ALL HORIZONTAL COORDINATES ARE GIVEN IN THE NORTH AMERICAN DATUM OF 1983 (NAD 83), LOUISIANA STATE PLANE, SOUTH ZONE, U.S. SURVEY FEET, REFERENCED TO GEOID09. THE BENCHMARK IN THE PROJECT AREA IS SHOWN ON SHEET 3.
3. MEAN LOW WATER (MLW) EQUALS -0.22 FT. NAVD 88, AND MEAN HIGH WATER(MHW) EQUALS +1.29 FT. NAVD 88.
4. AERIAL IMAGES USED FOR PROJECT DRAWING BACKGROUNDS ARE 2011 DOQQQ IMAGES FLOWN FOR THE OIL ASSESSMENT FOR THE BP MC252 INCIDENT.
5. THE CONTRACTOR SHALL BE RESPONSIBLE FOR NAVIGATING FROM A NAVIGABLE WATER BODY TO THE SITE. THE CONTRACTOR SHALL ALSO BE RESPONSIBLE FOR NAVIGATING WITHIN THE LIMITS OF THE PROJECT SITE AND DREDGING ONLY WITHIN THE DESIGNATED DREDGING LIMITS SHOWN ON THE PLANS. THE CPRA PROJECT ENGINEER OR LOUISIANA DEPARTMENT OF WILDLIFE AND FISHERIES (L.W.F.) INSPECTOR SHALL MONITOR EQUIPMENT OPERATIONS DURING CONSTRUCTION.
6. THE CONTRACTOR SHALL BE RESPONSIBLE FOR NOTIFYING L.W.F. FIVE (5) WORKING DAYS PRIOR TO MOBILIZATION. ALL PIPELINES IN THE AREA SHALL BE INITIALLY MARKED WITH BUOYS BY THE CONTRACTOR. THE CONTRACTOR SHALL MAINTAIN BUOYS DURING CONSTRUCTION AND SHALL HAVE ADEQUATE NAVIGATIONAL EQUIPMENT ON THEIR VESSELS TO AVOID DREDGING IN RESTRICTED AREAS. PIPELINE OPERATORS KNOWN TO HAVE PIPELINES IN THE VICINITY ARE SHOWN ON ALL PLAN VIEW SHEETS. THE CONTRACTOR SHALL CALL LOUISIANA-ONE-CALL AND PIPELINE SAFETY (225) 342-3417, FIVE (5) WORKING DAYS PRIOR TO MOBILIZATION. IT IS THE RESPONSIBILITY OF THE CONTRACTOR TO MAINTAIN THE CLEARANCES FROM THE PIPELINES SET FORTH IN THE PLAN DRAWINGS OR IN THE BID DOCUMENTS. NO EXCAVATION IS ALLOWED WITHIN ANY AREA RESTRICTED BY THE PIPELINE COMPANIES AND SET FORTH ON THE PLANS. PIPELINE LOCATIONS SHOWN ON THE PLANS ARE BASED ON LADNR PIPELINE DATABASES.

PIPELINE CONTACT INFORMATION:
 INFORMATION:
 EXXON MOBIL
 CONTACT: ANTHONY WAHLHEIM
 PH. (225) 755-2094

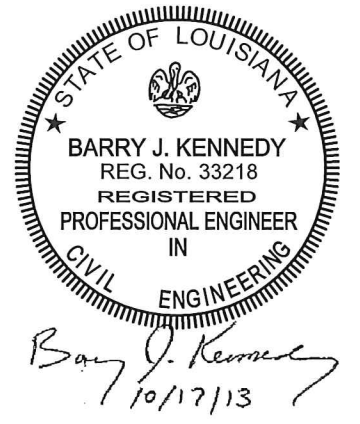
LOUISIANA DEPT. OF WILDLIFE AND FISHERIES CONTACT
 EDMOND MOUTON OR CASSIDY LEJEUNE
 CONTACT:
 PH. (337) 373-0032

7. THE PROJECT FEATURES AND QUANTITIES SHOWN ARE BASED ON FIELD SURVEYS PERFORMED IN 2011 FOR THE DESIGN OF THIS PROJECT. ACTUAL FIELD CONDITIONS MAY HAVE CHANGED SINCE THE DESIGN SURVEYS WERE PERFORMED. PRE-CONSTRUCTION SURVEYS, PERFORMED BY THE CONTRACTOR, WILL BE USED BY THE ENGINEER TO UPDATE THESE CONSTRUCTION PLANS. THE ENGINEER WILL USE THE UPDATED CROSS SECTIONS AS INITIAL CONDITIONS FOR ALL PROJECT FEATURES IN THE PLANS PRIOR TO CONSTRUCTION. THE ALIGNMENT FOR THE ARTICULATED CONCRETE MATS MAY BE REVISED BY THE ENGINEER BEFORE CONSTRUCTION TO REFLECT CHANGES IN THE FIELD CONDITIONS.
8. ANY DAMAGE TO EXISTING U.S. COAST GUARD NAVIGATION AIDS OR PRIVATE NAVIGATION AIDS SHALL BE REPAIRED BY THE CONTRACTOR TO THE U.S. COAST GUARD STANDARDS AT THE EXPENSE OF THE CONTRACTOR.
9. THE ESTIMATED AREA OF MAT COVERAGE SHOWN IN THE SUMMARY OF ESTIMATED QUANTITIES ARE FOR BIDDING PURPOSES ONLY AND CALCULATED ACCORDING TO THE CONDITIONS SURVEYED IN 2011 FOR THE DESIGN OF THIS PROJECT. SEE THE TS-6 FOR ADDITIONAL REQUIREMENTS. THE OWNER RESERVES THE RIGHT TO ADJUST QUANTITIES HIGHER OR LOWER WITHOUT ADJUSTMENT OF THE UNIT PRICE.
10. THE CONTRACTOR IS TO AVOID IMPACTS TO EXISTING VEGETATION FOR THE PROTECTION OF FRAGILE EMERGENT MARSH. ACCESS TO OR MOVEMENT OUTSIDE OF THE DEFINED PROJECT SITE IS STRICTLY PROHIBITED WITHIN MARSH CREATION AREAS FOR PERSONNEL, MATERIAL ACCESS, MATERIAL STORAGE, EQUIPMENT, ETC.
11. CLEARING OF TREES AND WOODY VEGETATION SHALL BE PERFORMED ON ALL AREAS WHERE SUCH MATERIALS ARE WITHIN THE PROPOSED LIMITS OF THE ARTICULATED CONCRETE MATS. MAXIMUM CLEARING SHALL BE 5 FEET BEYOND THE EXTENT OF THE ARTICULATED MATS. ALL TREES AND WOODY VEGETATION SHALL BE CUT LEVEL WITH THE GROUND SURFACE. IN AREAS WHERE TREES ARE LOCATED IN THE WATER, THOSE TREES AND STUMPS SHALL BE REMOVED SUCH THAT NO WOOD MATERIAL PROJECTS ABOVE THE MUD LINE. ALL MATERIAL CLEARED SHALL BE PLACED ON THE INTERIOR OF THE EXISTING CONTAINMENT DIKE ALIGNMENT. THE MATERIAL MAY EITHER BE BURIED OR PLACED AT A MAXIMUM HEIGHT OF +5.0' (NAVD88). NO DIRECT PAYMENT WILL BE MADE FOR CLEARING.
12. NO DREDGED MATERIAL SHALL BE PLACED WITHIN 40' OF THE PLANNED ACCESS CHANNEL IN THE EAST-WEST CANAL. THE CONTRACTOR MAY PLACE MATERIAL FROM EAST-WEST CANAL FLOTATION AND ACCESS DREDGING ADJACENT TO THE DREDGED ACCESS CANAL ALIGNMENT, AS FILL FOR THE STAGING AREA, OR AS FILL FOR THE CONTAINMENT DIKE REPAIR AS SHOWN ON THE PLANS.
13. THE TIMBER MATS ARE TO BE REMOVED WHOLE, IF POSSIBLE. SEE TS-4 FOR TIMBER MAT REMOVAL DETAILS. THE CONTRACTOR HAS THE OPTION TO REUSE THE REMOVED MATS IN THE STAGING AREA. PRIOR TO DEMOBILIZATION, ALL MATS ARE TO BE REMOVED AND DISPOSED BY THE CONTRACTOR.
14. THE CONTRACTOR IS TO DEGRADE THE REMNANT CONTAINMENT DIKE TO SURROUNDING MARSH ELEVATION WHERE THE TIMBER MAT PLUG WAS LOCATED. THE EXCAVATED MATERIAL IS TO BE SPREAD EVENLY WITHIN THE VICINITY OF THE REMOVED PLUG. EXCAVATION NEAR THE TIMBER PLUG MAY BE MODIFIED BY THE W.L.F. INSPECTOR.

15. THE CONTRACTOR SHALL PERFORM A LOUISIANA ONE CALL PRIOR TO MOBILIZATION. RECORDS OF THE ONE CALL SHALL BE SUBMITTED TO THE ENGINEER AND OWNER. PLEASE SEE GP-25 OF THE SPECIFICATIONS FOR FUTURE DETAILS

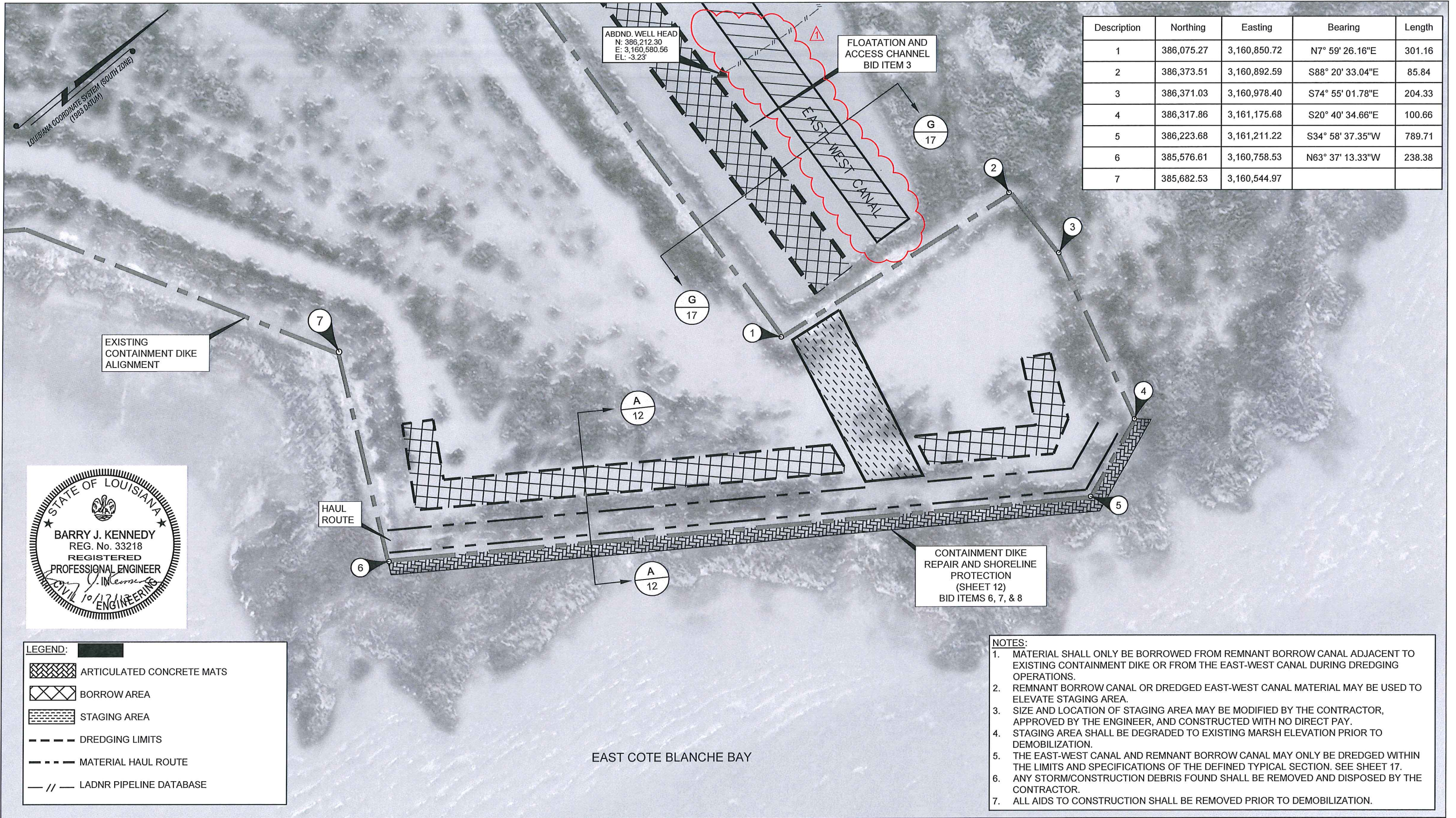
SUMMARY OF ESTIMATED QUANTITIES

| BASE BID | | | |
|----------|--|-------------|--------------------|
| ITEM No. | DESCRIPTION | UNIT | ESTIMATED QUANTITY |
| 1 | MOBILIZATION & DEMOBILIZATION | LUMP SUM | 1 |
| 2 | CONSTRUCTION SURVEYS | LUMP SUM | 1 |
| 3 | ACCESS AND FLOTATION DREDGING & PLUG REMOVAL | LUMP SUM | 1 |
| 4 | TIMBER MAT REMOVAL | LUMP SUM | 1 |
| 5 | EARTHEN PLUG & GAP DEGRADEMENT | LUMP SUM | 1 |
| 6 | ARTICULATED CONCRETE MATS (SHORELINE PROTECTION) | SQUARE YARD | 2,350 |
| 7 | WOVEN GEOTEXTILE FABRIC (SHORELINE PROTECTION) | SQUARE YARD | 2,350 |
| 8 | CONTAINMENT DIKE REPAIR (SHORELINE PROTECTION) | LINEAR FEET | 1,050 |



| | | | | |
|--|--|------------------|--|---|
|  T. BAKER SMITH 1913 A CENTURY OF SOLUTIONS 2013 412 South Van Ave, Houma, LA 70363 (985)868-1050 - tbsmith.com | COASTAL PROTECTION AND RESTORATION AUTHORITY 450 LAUREL ST. STE. 1501 BATON ROUGE, LOUISIANA 70801 | | EAST MARSH ISLAND MARSH CREATION POST-CONSTRUCTION MAINTENANCE EVENT | GENERAL NOTES AND ESTIMATED QUANTITIES |
| | DRAWN BY: WAC | DESIGNED BY: WAC | STATE PROJECT NUMBER: TV-21 FEDERAL PROJECT NUMBER: | DATE: 8/1/13 |
| APPROVED BY: BJK | SHEET 2 OF 17 | | | |

| | | | |
|------|----------|----------------|-----|
| 1 | 10/17/13 | ADDENDUM No. 1 | BJK |
| REV. | DATE | DESCRIPTION | BY |



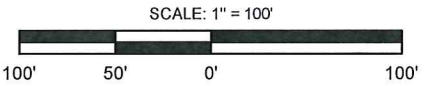
| Description | Northing | Easting | Bearing | Length |
|-------------|------------|--------------|------------------|--------|
| 1 | 386,075.27 | 3,160,850.72 | N7° 59' 26.16"E | 301.16 |
| 2 | 386,373.51 | 3,160,892.59 | S88° 20' 33.04"E | 85.84 |
| 3 | 386,371.03 | 3,160,978.40 | S74° 55' 01.78"E | 204.33 |
| 4 | 386,317.86 | 3,161,175.68 | S20° 40' 34.66"E | 100.66 |
| 5 | 386,223.68 | 3,161,211.22 | S34° 58' 37.35"W | 789.71 |
| 6 | 385,576.61 | 3,160,758.53 | N63° 37' 13.33"W | 238.38 |
| 7 | 385,682.53 | 3,160,544.97 | | |



LEGEND:

| | |
|--|---------------------------|
| | ARTICULATED CONCRETE MATS |
| | BORROW AREA |
| | STAGING AREA |
| | DREDGING LIMITS |
| | MATERIAL HAUL ROUTE |
| | LADNR PIPELINE DATABASE |

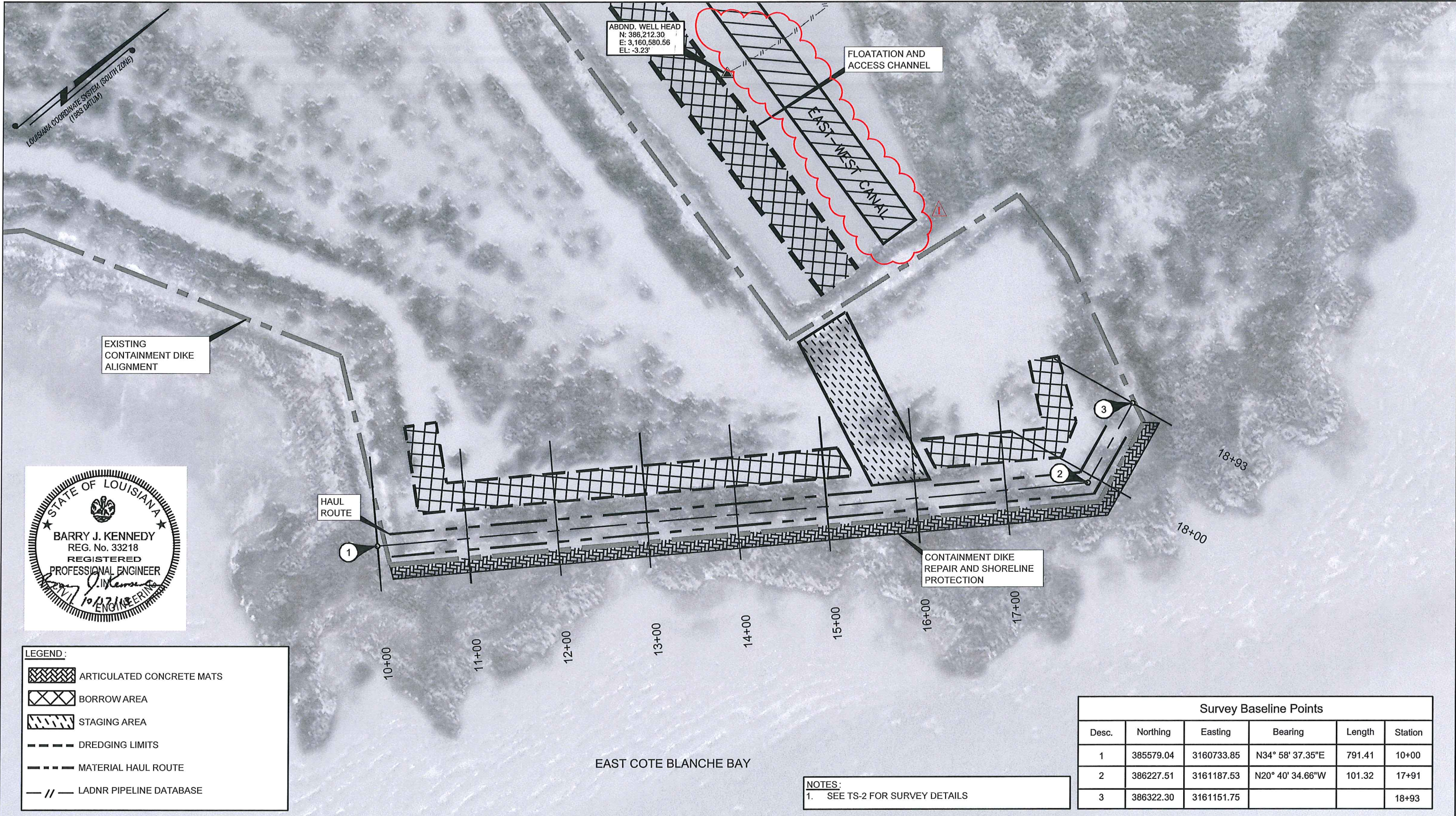
- NOTES:**
1. MATERIAL SHALL ONLY BE BORROWED FROM REMNANT BORROW CANAL ADJACENT TO EXISTING CONTAINMENT DIKE OR FROM THE EAST-WEST CANAL DURING DREDGING OPERATIONS.
 2. REMNANT BORROW CANAL OR DREDGED EAST-WEST CANAL MATERIAL MAY BE USED TO ELEVATE STAGING AREA.
 3. SIZE AND LOCATION OF STAGING AREA MAY BE MODIFIED BY THE CONTRACTOR, APPROVED BY THE ENGINEER, AND CONSTRUCTED WITH NO DIRECT PAY.
 4. STAGING AREA SHALL BE DEGRADED TO EXISTING MARSH ELEVATION PRIOR TO DEMOBILIZATION.
 5. THE EAST-WEST CANAL AND REMNANT BORROW CANAL MAY ONLY BE DREDGED WITHIN THE LIMITS AND SPECIFICATIONS OF THE DEFINED TYPICAL SECTION. SEE SHEET 17.
 6. ANY STORM/CONSTRUCTION DEBRIS FOUND SHALL BE REMOVED AND DISPOSED BY THE CONTRACTOR.
 7. ALL AIDS TO CONSTRUCTION SHALL BE REMOVED PRIOR TO DEMOBILIZATION.



| REV. | DATE | DESCRIPTION | BY |
|------|----------|----------------|-----|
| 1 | 10/17/13 | ADDENDUM No. 1 | BJK |



| | | | | |
|--|--|--|--|--------------------------------|
| COASTAL PROTECTION AND RESTORATION AUTHORITY 450 LAUREL ST. STE. 1501 BATON ROUGE, LOUISIANA 70801 | | EAST MARSH ISLAND MARSH CREATION POST-CONSTRUCTION MAINTENANCE EVENT | | SHORELINE PROTECTION LAYOUT |
| | | STATE PROJECT NUMBER: TV-21 | | |
| DRAWN BY: WAC | | DESIGNED BY: WAC | | DATE: 8/1/13 |
| | | APPROVED BY: BJK | | SHEET 4 OF 17 |

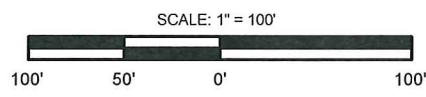


LEGEND:

- ARTICULATED CONCRETE MATS
- BORROW AREA
- STAGING AREA
- DREDGING LIMITS
- MATERIAL HAUL ROUTE
- LADNR PIPELINE DATABASE

| Survey Baseline Points | | | | | |
|------------------------|-----------|------------|------------------|--------|---------|
| Desc. | Northing | Easting | Bearing | Length | Station |
| 1 | 385579.04 | 3160733.85 | N34° 58' 37.35"E | 791.41 | 10+00 |
| 2 | 386227.51 | 3161187.53 | N20° 40' 34.66"W | 101.32 | 17+91 |
| 3 | 386322.30 | 3161151.75 | | | 18+93 |

NOTES:
1. SEE TS-2 FOR SURVEY DETAILS



| REV. | DATE | DESCRIPTION | BY |
|------|----------|----------------|-----|
| 1 | 10/17/13 | ADDENDUM No. 1 | BJK |



COASTAL PROTECTION AND RESTORATION AUTHORITY
450 LAUREL ST.
STE. 1501
BATON ROUGE, LOUISIANA 70801

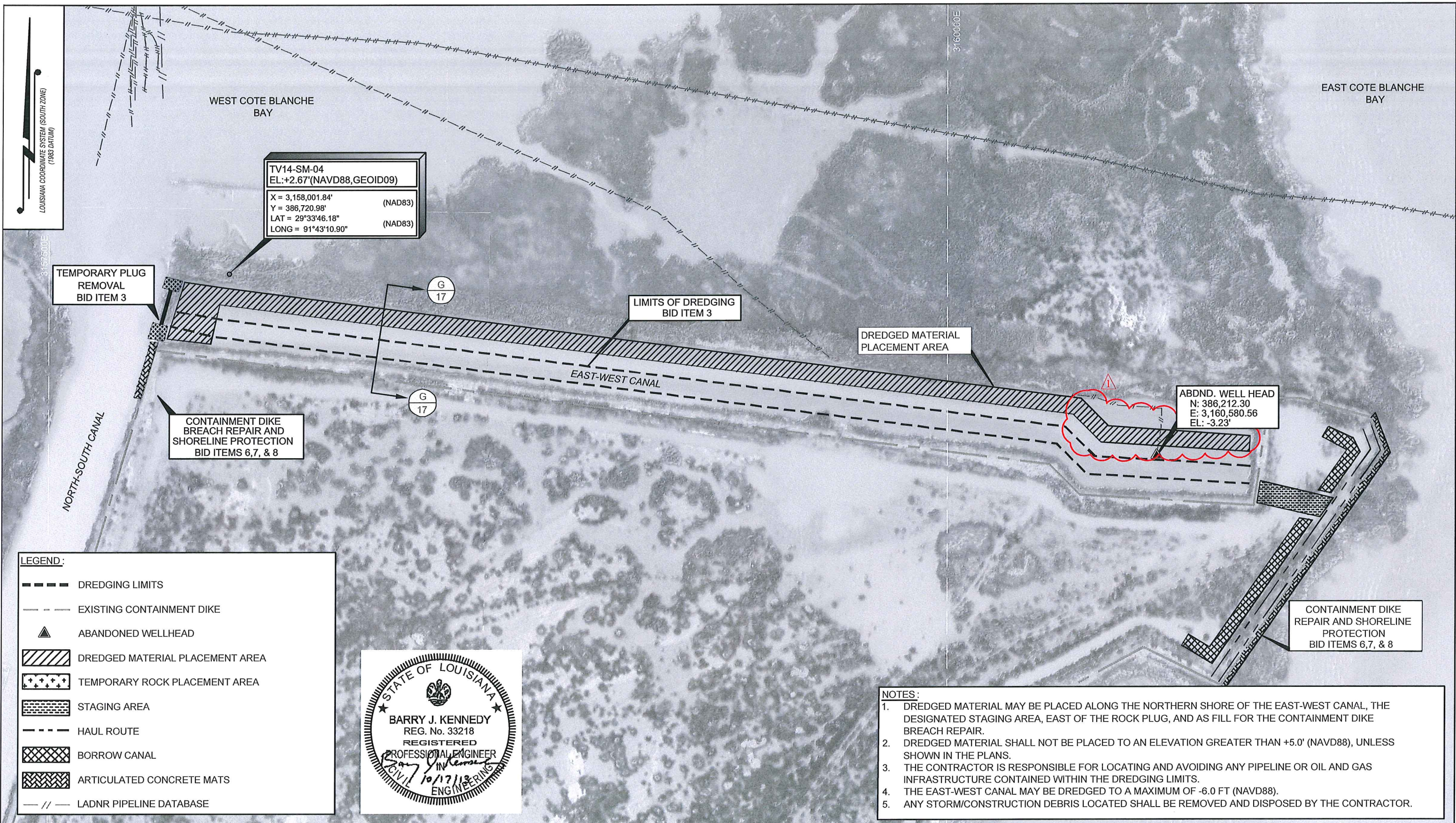
DRAWN BY: WAC DESIGNED BY: WAC

EAST MARSH ISLAND MARSH CREATION POST-CONSTRUCTION MAINTENANCE EVENT

STATE PROJECT NUMBER: TV-21
FEDERAL PROJECT NUMBER:

APPROVED BY: BJK

SHORELINE PROTECTION SURVEY BASELINE
DATE: 8/1/13
SHEET 5 OF 17

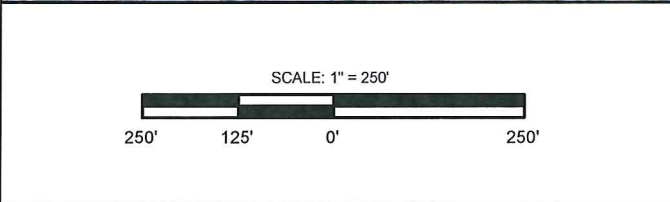


LEGEND:

- DREDGING LIMITS
- EXISTING CONTAINMENT DIKE
- ABANDONED WELLHEAD
- DREDGED MATERIAL PLACEMENT AREA
- TEMPORARY ROCK PLACEMENT AREA
- STAGING AREA
- HAUL ROUTE
- BORROW CANAL
- ARTICULATED CONCRETE MATS
- LADNR PIPELINE DATABASE



- NOTES:**
1. DREDGED MATERIAL MAY BE PLACED ALONG THE NORTHERN SHORE OF THE EAST-WEST CANAL, THE DESIGNATED STAGING AREA, EAST OF THE ROCK PLUG, AND AS FILL FOR THE CONTAINMENT DIKE BREACH REPAIR.
 2. DREDGED MATERIAL SHALL NOT BE PLACED TO AN ELEVATION GREATER THAN +5.0' (NAVD88), UNLESS SHOWN IN THE PLANS.
 3. THE CONTRACTOR IS RESPONSIBLE FOR LOCATING AND AVOIDING ANY PIPELINE OR OIL AND GAS INFRASTRUCTURE CONTAINED WITHIN THE DREDGING LIMITS.
 4. THE EAST-WEST CANAL MAY BE DREDGED TO A MAXIMUM OF -6.0 FT (NAVD88).
 5. ANY STORM/CONSTRUCTION DEBRIS LOCATED SHALL BE REMOVED AND DISPOSED BY THE CONTRACTOR.



| REV. | DATE | DESCRIPTION | BY |
|------|----------|----------------|-----|
| 1 | 10/17/13 | ADDENDUM No. 1 | B.K |



COASTAL PROTECTION AND RESTORATION AUTHORITY
 450 LAUREL ST.
 STE. 1501
 BATON ROUGE, LOUISIANA 70801

DRAWN BY: WAC DESIGNED BY: WAC

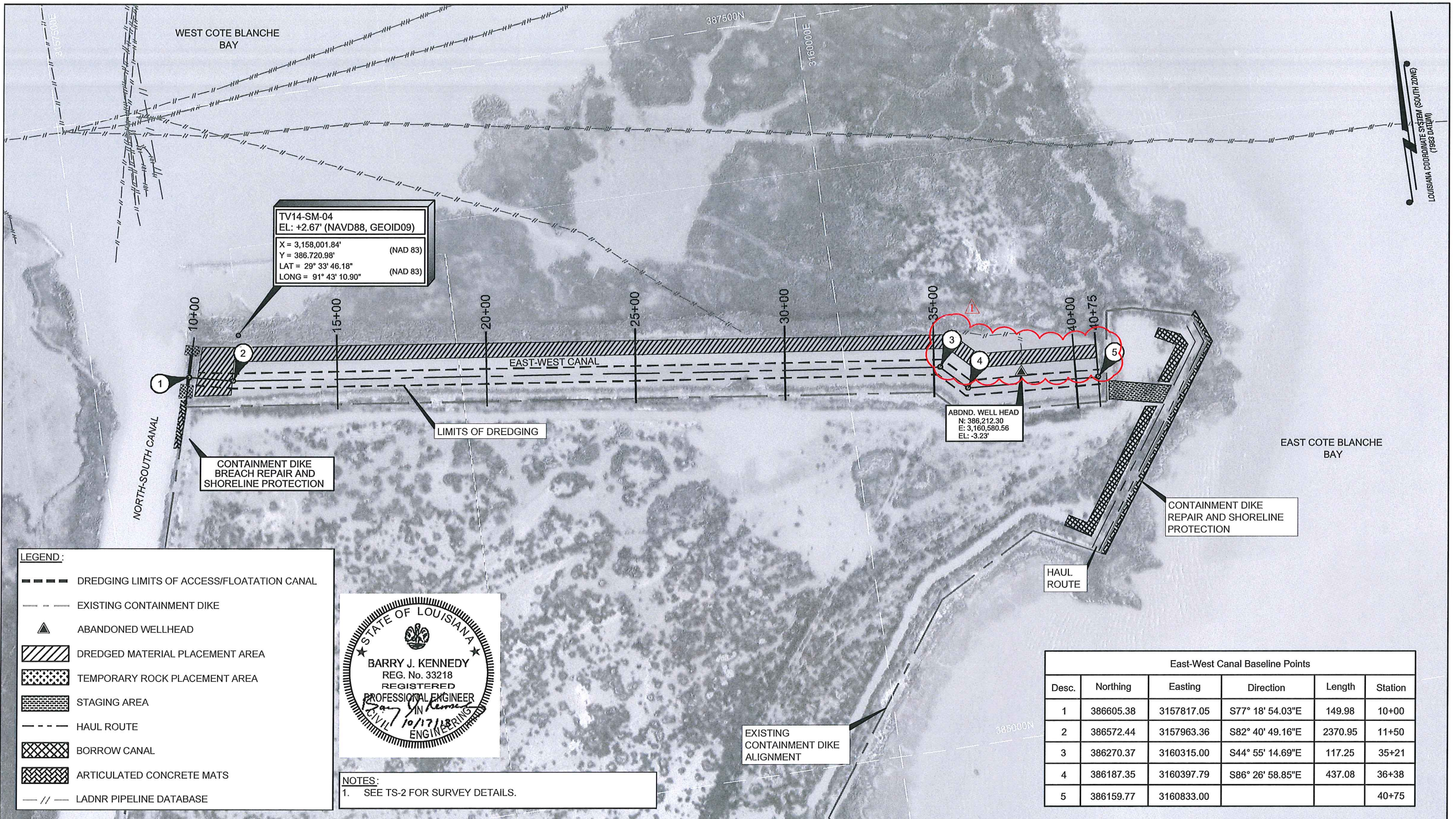
EAST MARSH ISLAND MARSH CREATION
 POST-CONSTRUCTION
 MAINTENANCE EVENT

STATE PROJECT NUMBER: TV-21
 FEDERAL PROJECT NUMBER:

APPROVED BY: BJK

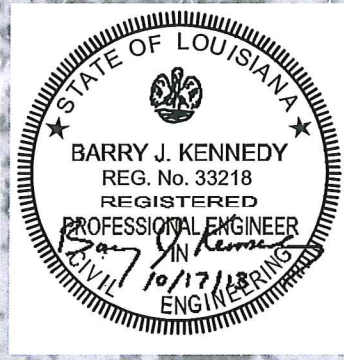
EAST-WEST CANAL
 ACCESS LAYOUT

DATE: 8/1/13
 SHEET 6 OF 17



TV14-SM-04
 EL: +2.67' (NAVD88, GEOID09)
 X = 3,158,001.84' (NAD 83)
 Y = 386,720.98' (NAD 83)
 LAT = 29° 33' 46.18" (NAD 83)
 LONG = 91° 43' 10.90"

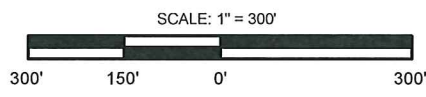
ABDND. WELL HEAD
 N: 386,212.30
 E: 3,160,580.56
 EL: -3.23'



NOTES:
 1. SEE TS-2 FOR SURVEY DETAILS.

| East-West Canal Baseline Points | | | | | |
|---------------------------------|-----------|------------|------------------|---------|---------|
| Desc. | Northing | Easting | Direction | Length | Station |
| 1 | 386605.38 | 3157817.05 | S77° 18' 54.03"E | 149.98 | 10+00 |
| 2 | 386572.44 | 3157963.36 | S82° 40' 49.16"E | 2370.95 | 11+50 |
| 3 | 386270.37 | 3160315.00 | S44° 55' 14.69"E | 117.25 | 35+21 |
| 4 | 386187.35 | 3160397.79 | S86° 26' 58.85"E | 437.08 | 36+38 |
| 5 | 386159.77 | 3160833.00 | | | 40+75 |

- LEGEND:
- DREDGING LIMITS OF ACCESS/FLOATATION CANAL
 - - - EXISTING CONTAINMENT DIKE
 - ▲ ABANDONED WELLHEAD
 - ▨ DREDGED MATERIAL PLACEMENT AREA
 - ▩ TEMPORARY ROCK PLACEMENT AREA
 - ⋯ STAGING AREA
 - - - HAUL ROUTE
 - ▩ BORROW CANAL
 - ▨ ARTICULATED CONCRETE MATS
 - == LADNR PIPELINE DATABASE



| REV. | DATE | DESCRIPTION | BY |
|------|----------|----------------|-----|
| 1 | 10/17/13 | ADDENDUM No. 1 | BJK |

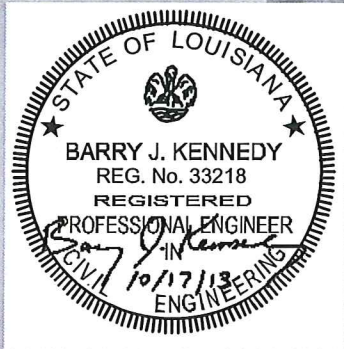
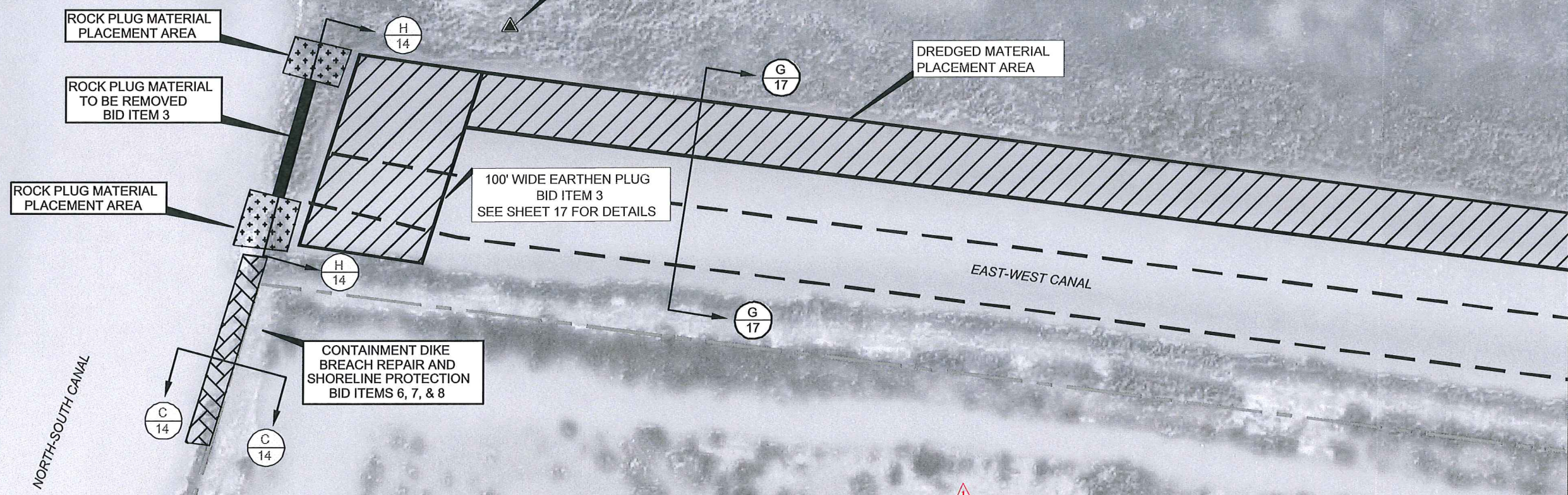


| | | | | |
|--|--|--|--|--|
| COASTAL PROTECTION AND RESTORATION AUTHORITY 450 LAUREL ST. STE. 1501 BATON ROUGE, LOUISIANA 70801 | | EAST MARSH ISLAND MARSH CREATION POST-CONSTRUCTION MAINTENANCE EVENT | | EAST-WEST CANAL ACCESS SURVEY BASELINE |
| | | STATE PROJECT NUMBER: TV-21 FEDERAL PROJECT NUMBER: | | |
| DRAWN BY: WAC DESIGNED BY: WAC | | APPROVED BY: BJK | | SHEET 7 OF 17 |

LOUISIANA COORDINATE SYSTEM (SOUTH ZONE)
(1983 DATUM)

3157500E

TV14-SM-04
EL:+2.67'(NAVD88,GEOID09)
X = 3,158,001.84' (NAD83)
Y = 386,720.98' (NAD83)
LAT = 29°33'46.18" (NAD83)
LONG = 91°43'10.90" (NAD83)



LEGEND:

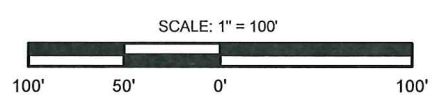
- PROJECT BENCHMARK
- EAST-WEST CANAL DREDGING LIMITS / ACCESS ROUTE
- EXISTING CONTAINMENT DIKE
- DREDGED MATERIAL PLACEMENT AREA
- PLUG MATERIAL PLACEMENT AREA
- DIKE REPAIR AND SHORELINE PROTECTION
- MATERIAL TO BE REMOVED

SHORELINE PROTECTION NOTES :

- MATERIAL FROM THE EAST-WEST CANAL DREDGING MAY BE USED AS FILL FOR THE CONTAINMENT DIKE BREACH REPAIR. SEE TS-8 OF THE SPECIFICATIONS FOR DETAILS.
- FILL SHALL BE PLACED TO THE LINES, GRADES, AND ELEVATIONS SHOWN IN TYPICAL SECTION C.
- ARTICULATED CONCRETE MATS WILL BE PLACED OVER GEOTEXTILE FABRIC AS SHOWN IN TYPICAL SECTION C AND STATED IN TS-6 AND TS-7 OF THE SPECIFICATIONS.

NOTES:

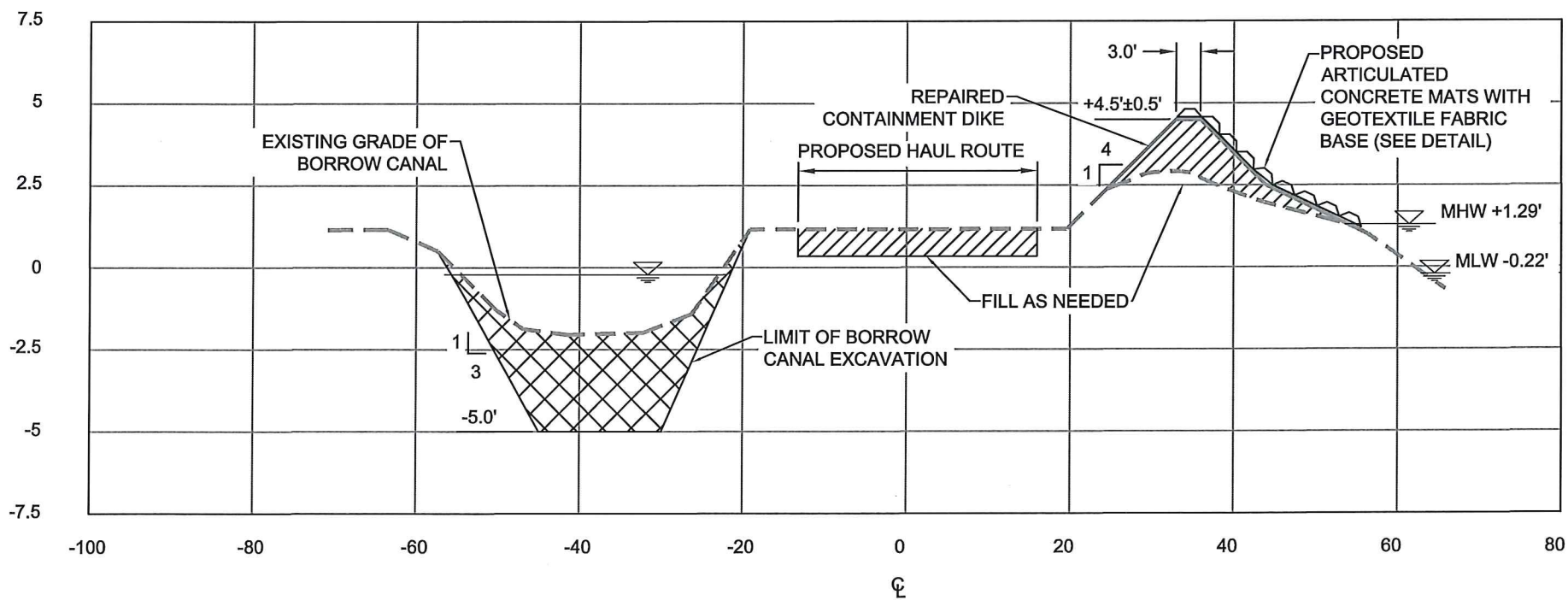
- THE ROCK PLUG IS TO BE RECONSTRUCTED WITHIN THE LINES, GRADES, AND ELEVATIONS OF THE PRE-CONSTRUCTION SURVEY PRIOR TO DEMOBILIZATION, DREDGED MATERIAL FROM THE EAST-WEST CANAL MAY BE USED.
- EXCAVATED ROCK PLUG MATERIAL IS TO BE PLACED AREAS ADJACENT TO THE EXCAVATION AS SHOWN ON THE PLANS.
- DREDGED MATERIAL FROM THE EAST-WEST CANAL SHALL BE PLACED TO FORM A 100.0' EARTHEN PLUG AT +1.5' ELEVATION EAST OF THE ROCK PLUG PRIOR TO DEMOBILIZATION, PAID THROUGH BID ITEM 3.
- EXCAVATED MATERIAL SHALL NOT BE PLACED AS TO IMPEDE NAVIGATION OF EXISTING WATERWAYS.
- THE NORTH-SOUTH CANAL MAY BE DREDGED, WITH APPROVAL BY THE ENGINEER, TO ACCESS THE ROCK PLUG AND EAST-WEST CANAL.
- THE CONTRACTOR IS TO COLLECT AND DISPOSE ANY STORM OR CONSTRUCTION DEBRIS FOUND NEAR THE WORK AREA.



| REV. | DATE | DESCRIPTION | BY |
|------|----------|----------------|-----|
| 1 | 10/17/13 | ADDENDUM No. 1 | BJK |

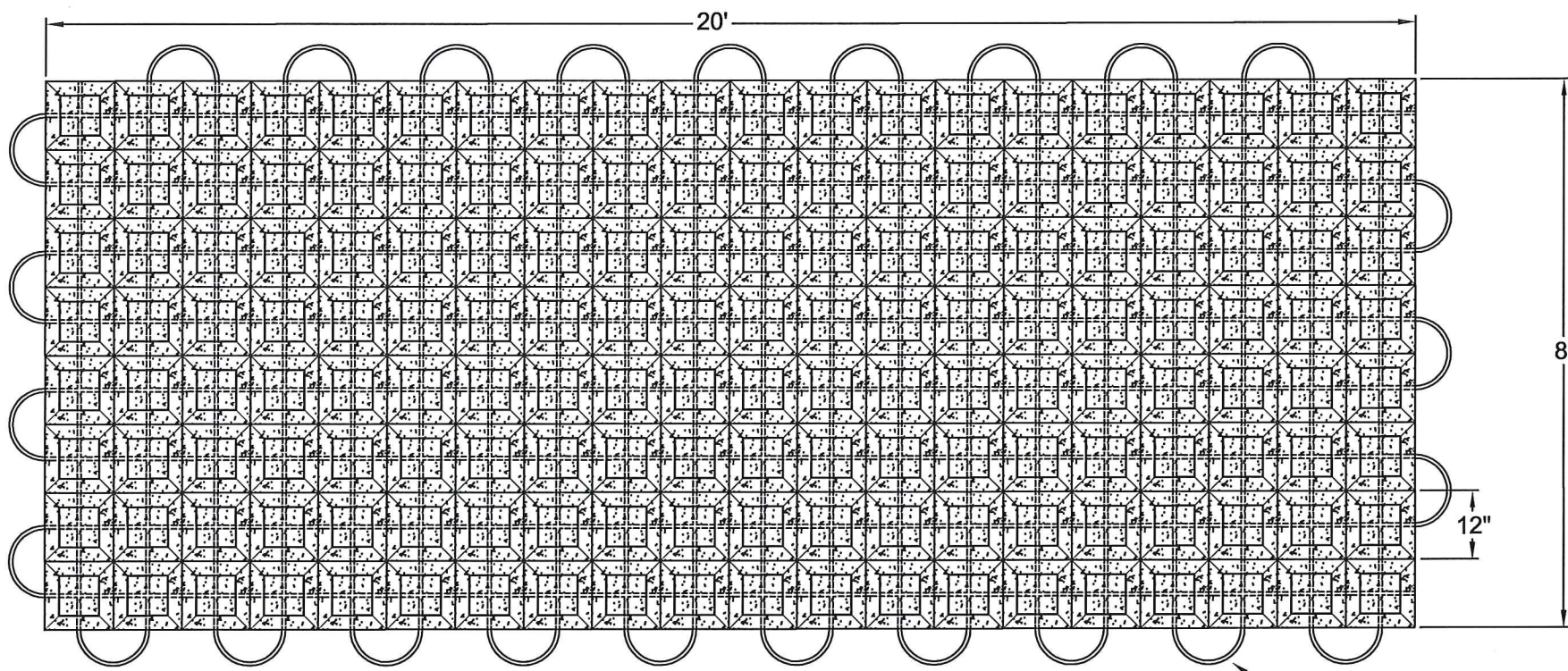
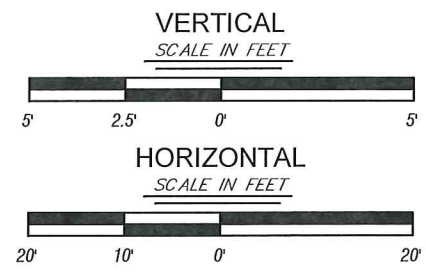


| | | | |
|--|------------------|--|--|
| COASTAL PROTECTION AND RESTORATION AUTHORITY 450 LAUREL ST. STE. 1501 BATON ROUGE, LOUISIANA 70801 | | EAST MARSH ISLAND MARSH CREATION POST-CONSTRUCTION MAINTENANCE EVENT | TEMPORARY ROCK PLUG REMOVAL AND BREACH REPAIR LAYOUT |
| | | STATE PROJECT NUMBER: TV-21 | DATE: 8/1/13 |
| DRAWN BY: WAC | DESIGNED BY: WAC | FEDERAL PROJECT NUMBER: | APPROVED BY: BJK |
| | | SHEET 8 OF 17 | |

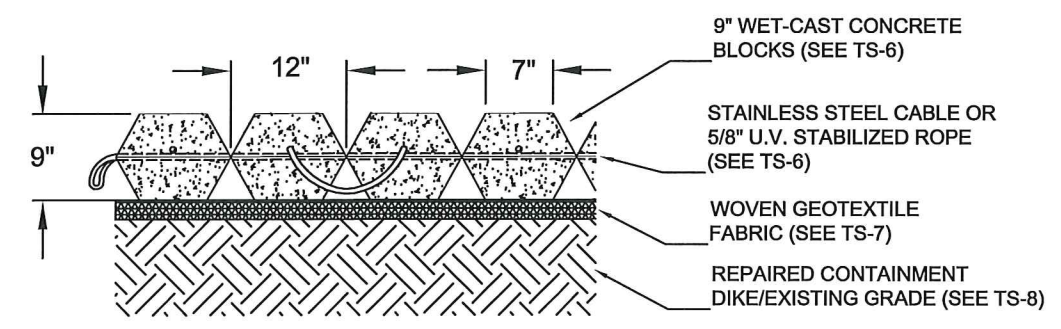


TYPICAL SECTION A-A

- NOTES:**
1. TYPICAL SECTION EXISTING FEATURES ARE NOT BASED ON SURVEY DATA.
 2. BORROWED MATERIAL FROM THE REMNANT BORROW CANAL MAY ONLY BE USED FOR HAUL ROUTE FILL AND CONTAINMENT DIKE RECONSTRUCTION.
 3. THE HAUL ROUTE SHALL BE CONSTRUCTED AS NEEDED, BY THE CONTRACTOR, WITH NO DIRECT PAY.
 4. MATERIAL MAY ONLY BE EXCAVATED WITHIN THE EXISTING BORROW CANAL TO A MINIMUM ELEVATION OF 5.0' (NAVD88)
 5. THE FINAL LIFT OF MATERIAL PLACED ON THE CONTAINMENT DIKE IS TO BE CONSTRUCTED TO A 4.5±0.5' (NAVD88), A MINIMUM OF 7 DAYS AFTER INITIAL PLACEMENT.



ARTICULATED CONCRETE MAT PLAN VIEW



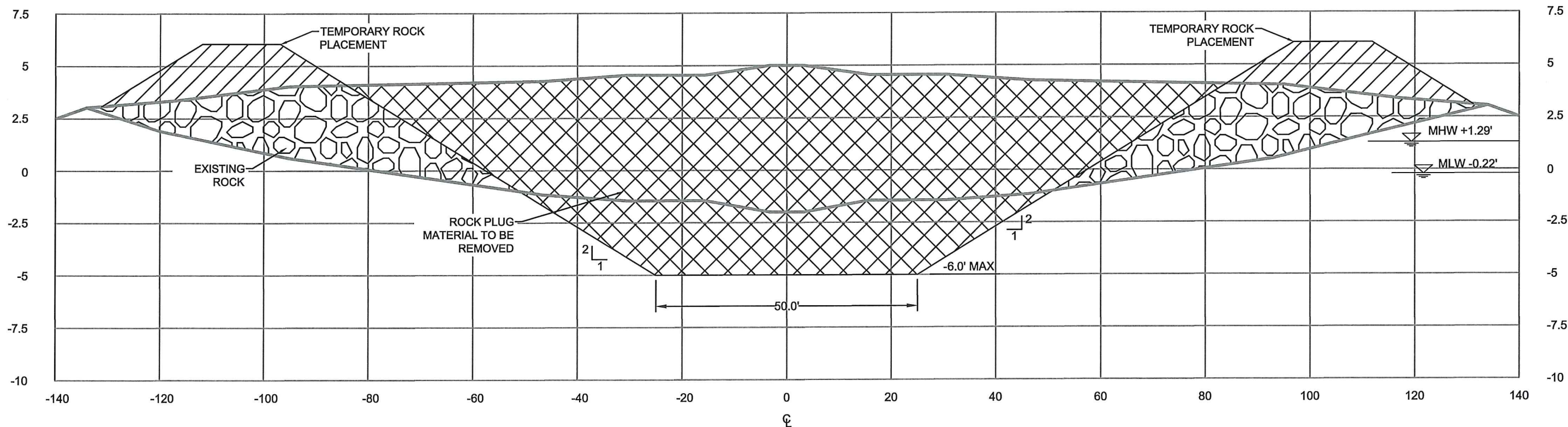
ARTICULATED CONCRETE MAT DETAIL AND SECTION VIEW

- ARTICULATED CONCRETE MATS NOTES**
1. GULFWARD MARSH SURFACE ELEVATION, EXTENDING 30' FROM EXISTING CONTAINMENT DIKE ALIGNMENT SHALL BE A MINIMUM OF +1.0' (NAVD88) PRIOR TO GEOTEXTILE AND MAT PLACEMENT.
 2. GEOTEXTILE FABRIC (WOVEN) SHALL BE PLACED ALONG THE REPAIRED DIKE AND GULFWARD MARSH PRIOR TO MAT PLACEMENT.
 3. THE ARTICULATED CONCRETE MATS SHALL BE WET-CAST 9' BLOCKS WITH 8'x20' OVERALL DIMENSIONS.
 4. THE ARTICULATED CONCRETE MATS SHALL BE PLACED, WIDTH-WISE, ALONG THE REPAIRED DIKE CENTERLINE COVERING THE CREST'S WIDTH AND EXTENDING TOWARDS THE BAY.
 5. THE SOUTHERN AND NORTHERN EXTENTS OF THE MATS SHALL BE ANCHORED ACCORDING TO THE MANUFACTURERS RECOMMENDATIONS.

| REV. | DATE | DESCRIPTION | BY |
|------|----------|----------------|-----|
| 1 | 10/16/13 | ADDENDUM No. 1 | BJK |



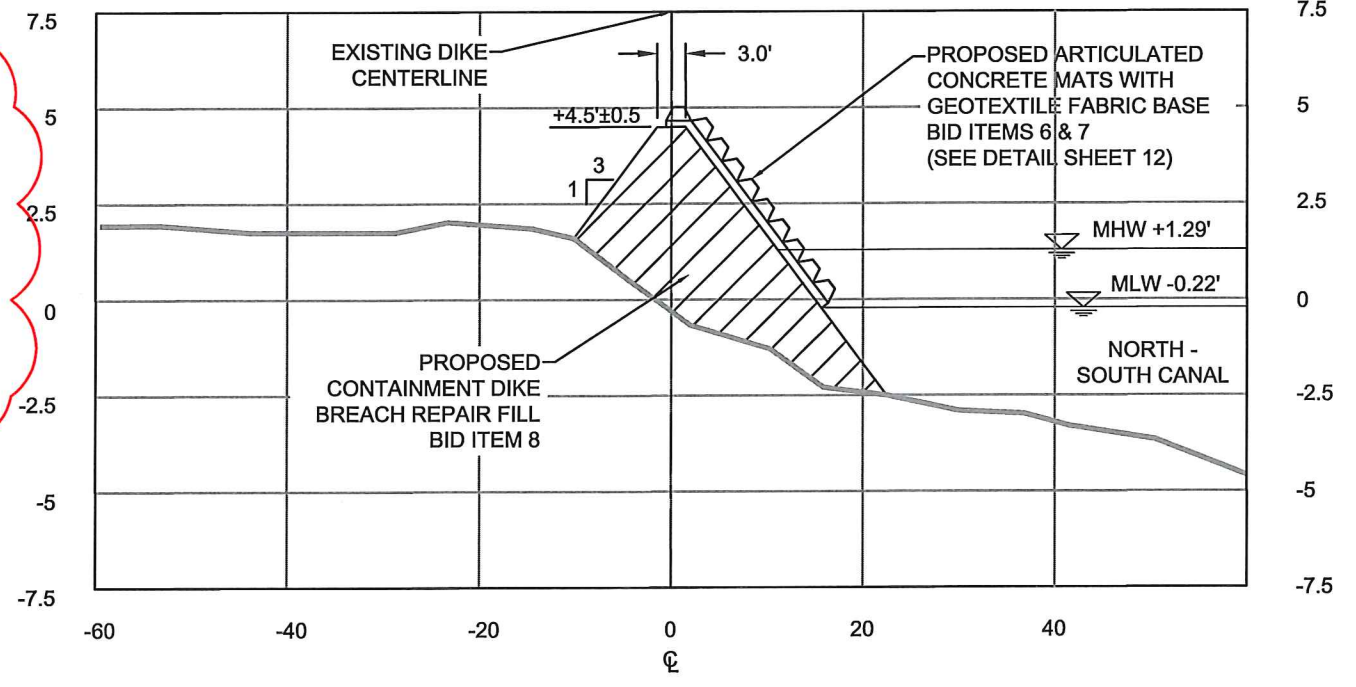
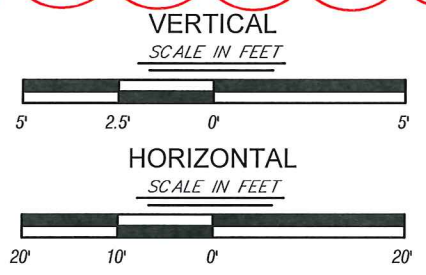
| | | | |
|--|------------------|--|--|
| COASTAL PROTECTION AND RESTORATION AUTHORITY 450 LAUREL ST. STE. 1501 BATON ROUGE, LOUISIANA 70801 | | EAST MARSH ISLAND MARSH CREATION POST-CONSTRUCTION MAINTENANCE EVENT | SHORELINE PROTECTION TYPICAL SECTION A-A |
| | | STATE PROJECT NUMBER: TV-21 FEDERAL PROJECT NUMBER: | |
| DRAWN BY: WAC | DESIGNED BY: WAC | APPROVED BY: BJK | SHEET 12 OF 17 |



TYPICAL SECTION H-H

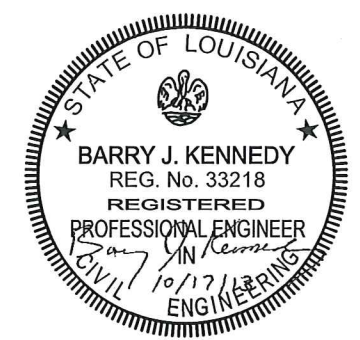
HORIZONTAL 1" = 5'
VERTICAL 1" = 20'

- NOTES:**
1. TYPICAL SECTIONS OF EXISTING FEATURES ARE NOT BASED ON SURVEY DATA.
 2. EXCAVATED ROCK PLUG MATERIAL SHALL BE PLACED WITHIN THE EXISTING ROCK PLUG EXTENTS.
 3. THE ROCK PLUG MAY ONLY BE EXCAVATED TO A MAXIMUM ELEVATION OF -6.0' (NAVD88)
 4. THE PLUG SHALL BE DEGRADED 50.0' ALONG THE EXISTING PLUG CENTERLINE.
 5. THE CONTRACTOR IS RESPONSIBLE FOR LOCATING AND AVOIDING EXISTING PIPELINE AND OIL AND GAS INFRASTRUCTURE DURING DEGRADEMENT.
 6. THE EXCAVATED ROCK PLUG MATERIAL SHALL BE PLACED WITHIN PRECONSTRUCTION LINES, GRADES, AND ELEVATIONS PRIOR TO DEMOBILIZATION.
 7. TYPICAL SECTION C-C SHALL FOLLOW DETAILS FOR ARTICULATED CONCRETE MAT INSTALLATION SHOWN IN SHEET 12.



TYPICAL SECTION C-C

HORIZONTAL 1" = 5'
VERTICAL 1" = 20'



| REV. | DATE | DESCRIPTION | BY |
|------|----------|----------------|-----|
| 1 | 10/16/13 | ADDENDUM No. 1 | BJK |



COASTAL PROTECTION AND RESTORATION AUTHORITY

450 LAUREL ST.
STE. 1501
BATON ROUGE, LOUISIANA 70801

DRAWN BY: WAC DESIGNED BY: WAC

EAST MARSH ISLAND MARSH CREATION POST-CONSTRUCTION MAINTENANCE EVENT

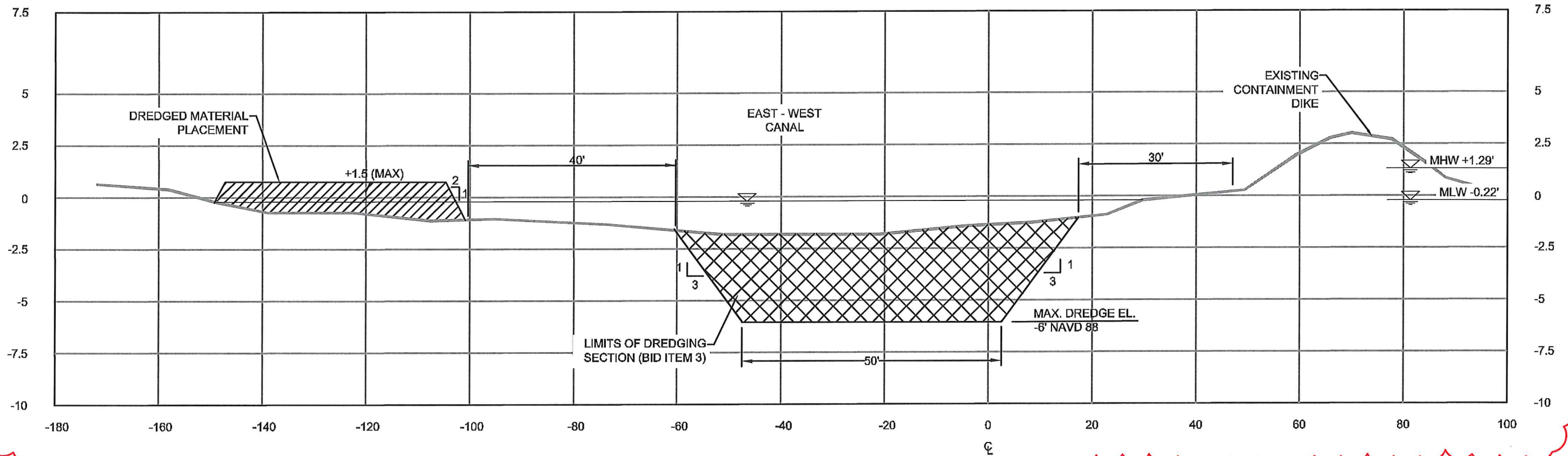
STATE PROJECT NUMBER: TV-21
FEDERAL PROJECT NUMBER:

APPROVED BY: BJK

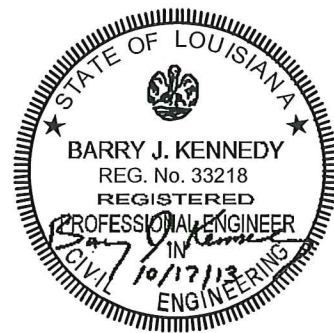
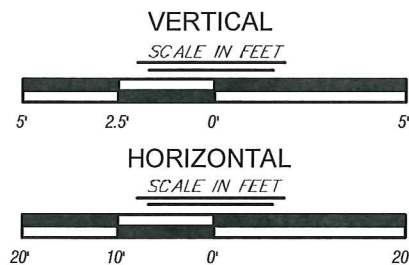
TEMPORARY ROCK PLUG REMOVAL & BREACH REPAIR TYPICAL SECTION C-C & H-H

DATE: 8/1/13

SHEET 14 OF 17



TYPICAL SECTION G-G



NOTES:

1. TYPICAL SECTIONS OF EXISTING FEATURES ARE NOT BASED ON SURVEY DATA.
2. DREDGED MATERIAL SHALL NOT BE PLACED OUTSIDE THE BANKLINES OF THE EAST-WEST CANAL, UNLESS SPECIFIED IN THE PLANS AND SPECIFICATIONS.
3. THE EAST-WEST CANAL SHALL ONLY BE DREDGED TO THE MINIMUM DRAFT REQUIREMENT OF CONSTRUCTION VESSELS USED ON THE PROJECT. IN NO CASE SHALL MATERIAL BE REMOVED FROM THE CANAL BELOW -6.0' (NAVD88).
4. THE DREDGED MATERIAL MAY ONLY BE PLACED TO A MAXIMUM ELEVATION OF +1.5' (NAVD88)
5. THE PROPOSED 100' WIDE EARTHEN PLUG SHALL FOLLOW THE LINES, GRADES, AND ELEVATIONS OF THE DREDGE MATERIAL PLACEMENT AREA IN TYPICAL SECTION G-G.

| REV. | DATE | DESCRIPTION | BY |
|------|----------|----------------|-----|
| 1 | 10/17/13 | ADDENDUM No. 1 | BJK |



COASTAL PROTECTION AND RESTORATION AUTHORITY

450 LAUREL ST.
STE. 1501
BATON ROUGE, LOUISIANA 70801

DRAWN BY: WAC

DESIGNED BY: WAC

EAST MARSH ISLAND MARSH CREATION
POST-CONSTRUCTION
MAINTENANCE EVENT

STATE PROJECT NUMBER: TV-21

FEDERAL PROJECT NUMBER:

APPROVED BY: BJK

EAST-WEST CANAL
TYPICAL SECTIONS G-G

DATE: 8/1/13

SHEET 17 OF 17

ATTACHMENT B

Pre-Bid Conference Attendance Record

MANDATORY PRE-BID CONFERENCE
ATTENDANCE RECORD


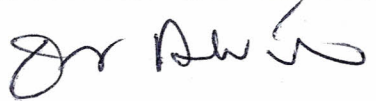
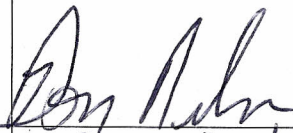
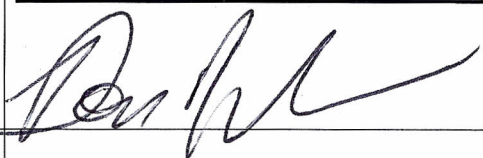




PROJECT: EAST MARSH CREATION POST-CONSTRUCTION MAINTENANCE EVENT (TV-21)

AGENCY: CPRA

DATE: OCTOBER 9, 2013 at 10:30am

LOCATION: CPRA LAFAYETTE REGIONAL OFFICE, LAFAYETTE, LA

Please Print Clearly

| Name and Signature (Sign-In) | Company/Address | Phone No. | Fax No. and Email | Name and Signature (Sign-Out) |
|--|---|------------------------------|--|--|
| JERRY DEVILLE  | WEEKS MARINE, INC. 304 GAILLE DR Covington, LA 70433 | 985 875-2500 | 985-851-6364 JCDDEVILLE@WEEKSMARINE.COM | JERRY DEVILLE  |
|  Don Nelms | 4H Construction P.O. Box 1761 Cleveland MS 38732 | 901-596-2003 662-846-1204 | 662-846-1206 |  |
|  MIKE NITSKA | HYDROTERRA TECH 202 JACOBS RUN SCOTT LA | 337-315-2190 | MIKE.NITSKA@HYDROTERRATEC.COM |  |
| DARRELL PONTIFF  | CPRA | 337 482-0683 | darrell.pontiff@la.gov | DARRELL PONTIFF  |

MANDATORY PRE-BID CONFERENCE
ATTENDANCE RECORD


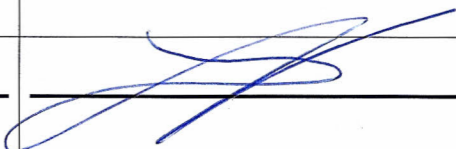
PROJECT: EAST MARSH CREATION POST-CONSTRUCTION MAINTENANCE EVENT (TV-21)

AGENCY: CPRA

DATE: OCTOBER 9, 2013 at 10:30am

LOCATION: CPRA LAFAYETTE REGIONAL OFFICE, LAFAYETTE, LA

Please Print Clearly

| Name and Signature (Sign-In) | Company/Address | Phone No. | Fax No. and Email | Name and Signature (Sign-Out) |
|---|--|---------------------|--------------------------------------|---|
| <u>Dion Broussard</u> | <u>635 Cajundome</u> | <u>337-482-0686</u> | <u>dion.broussard@lagov</u> | |
| <u>Jody White</u> | <u>635 Cajundome Blvd</u> | <u>337-482-0664</u> | <u>jody.white@lagov</u> | <u>Jody Roger White</u> |
| <u>Jody Roger White</u> | | | | |
| <u>Tyler Ray</u> | <u>Wilco Marsh Buggies</u> | <u>337-945-8301</u> | <u>troy@wilcomarshbuggies</u> | <u>Will T R</u> |
| <u>Will T R</u> | <u>1304 Macarthur Ave</u> <u>Harvey, LA 70058</u> | | <u>504-341-3409</u> <u>jr.com</u> | |
| <u>Nathan Dondie</u> | <u>B+J Inc</u> | <u>337-540-8313</u> | <u>Nathandondie@BSmarine</u> | |
|  | <u>P.O. Box 967</u> <u>Lake Arthur, LA 70649</u> | | <u>Services.com</u> |  |

MANDATORY PRE-BID CONFERENCE
ATTENDANCE RECORD

PROJECT: EAST MARSH CREATION POST-CONSTRUCTION MAINTENANCE EVENT (TV-21)

AGENCY: CPRA

DATE: OCTOBER 9, 2013 at 10:30am

LOCATION: CPRA LAFAYETTE REGIONAL OFFICE, LAFAYETTE, LA

Please Print Clearly

| Name and Signature (Sign-In) | Company/Address | Phone No. | Fax No. and Email | Name and Signature (Sign-Out) |
|---|--|----------------|---|--|
| Brent Goodyear, Jr. <i>Brent Goodyear, Jr.</i> | Jaweler 4406 Hwy 14 New Iberia, LA | (337) 852-1321 | Brent@Jaweler.com (337) 367-2888 | Brent Goodyear <i>Brent Goodyear, Jr.</i> |
| Glen Ashy <i>Glen Ashy</i> | BEAN LLC P.O. Box 51657 LAF- 70505 | 337-234-4501 | G.Ashy@CFBEAN.COM 337 237 1804- FAX | <i>Glen Ashy</i> Glen Ashy |
| Roland MATURIN <i>Roland J. Maturin</i> | APOLLO ENVIRONMENTAL 101 CAICO 2 LAFAYETTE LA 70505 | 337-522-2344 | R.MATURIN@APOLLOENVINO.COM | Roland MATURIN <i>Roland J. Maturin</i> |
| JERRY LANDRY <i>Jerry Landry</i> | CAJUN MARITIME 115 CONCORD ARBEVILLE, LA | (337) 893-3686 | JERRY.LANDRY@CAJUNUSA.COM (337) 893-3683 | JERRY LANDRY <i>Jerry Landry 11:30</i> |

MANDATORY PRE-BID CONFERENCE
ATTENDANCE RECORD


PROJECT: EAST MARSH CREATION POST-CONSTRUCTION MAINTENANCE EVENT (TV-21)

AGENCY: CPRA

DATE: OCTOBER 9, 2013 at 10:30am

LOCATION: CPRA LAFAYETTE REGIONAL OFFICE, LAFAYETTE, LA

Please Print Clearly

| Name and Signature (Sign-In) | Company/Address | Phone No. | Fax No. and Email | Name and Signature (Sign-Out) |
|------------------------------|----------------------------|---------------------|----------------------------------|---|
| <u>Jason Kennedy</u> | <u>T. Baker Smith, LLC</u> | <u>985-852-0232</u> | <u>jason.kennedy@tbsmith.com</u> |  |
| | | | | |
| | | | | |
| | | | | |