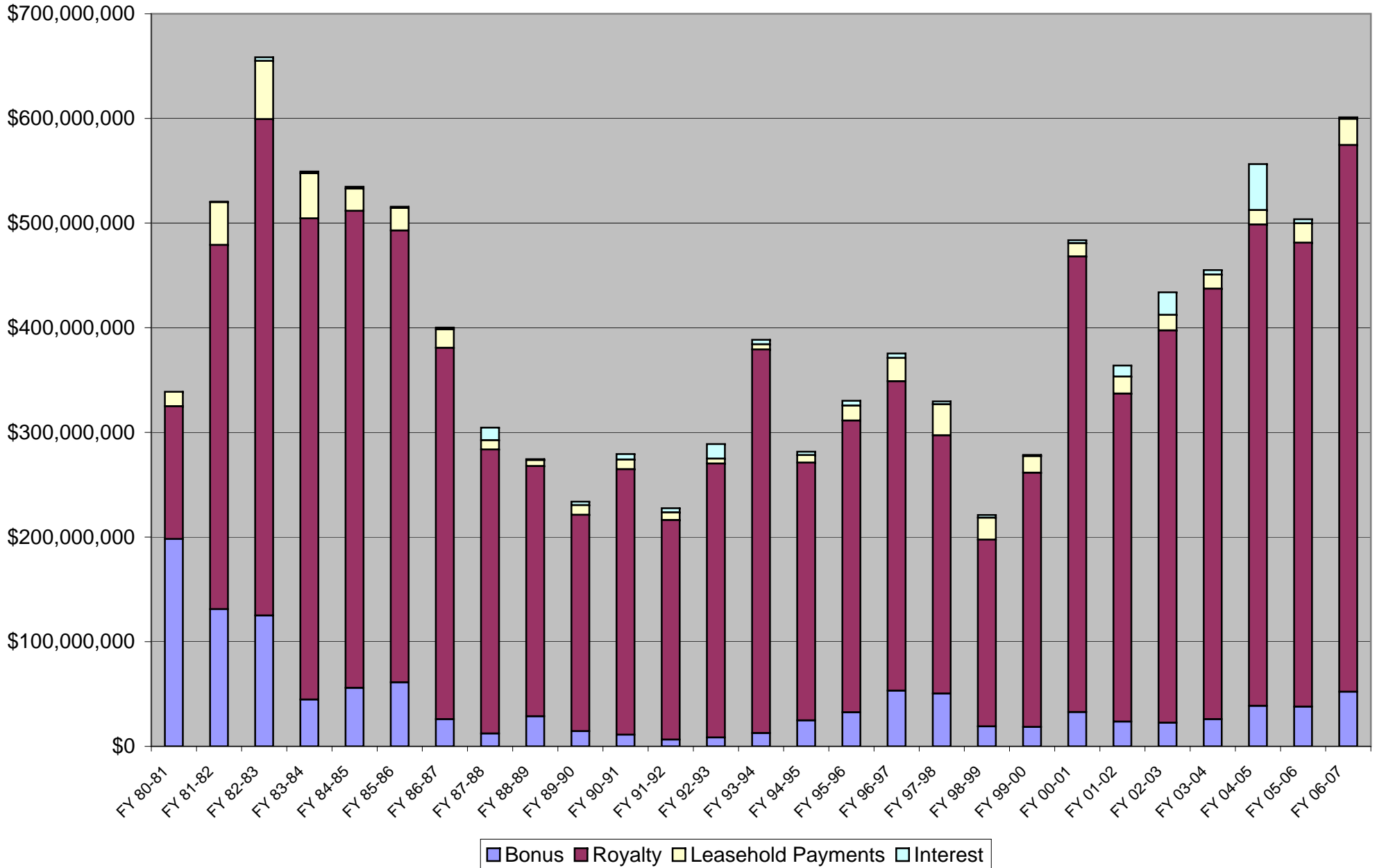


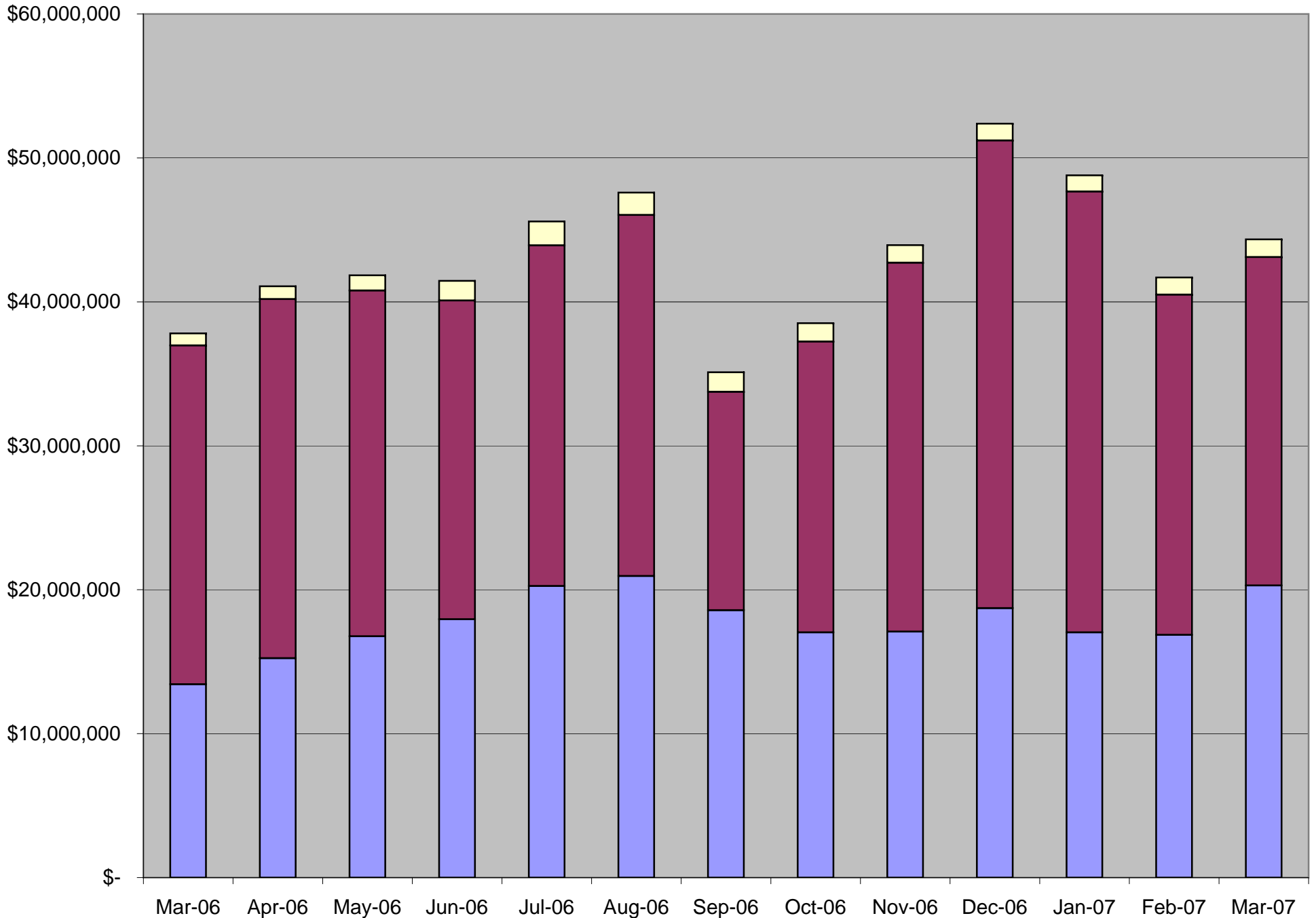
Historical Cash Receipts



Historical Cash Receipts

	<u>Bonus</u>	<u>Royalty</u>	<u>Leasehold Payments</u>	<u>Interest</u>	<u>Total</u>	<u>Monthly Average</u>
FY 80-81	\$198,104,745	\$126,962,938	\$13,726,070	\$38,009	\$338,831,763	\$28,235,980
FY 81-82	\$131,117,077	\$348,027,422	\$40,948,515	\$265,203	\$520,358,217	\$43,363,185
FY 82-83	\$125,077,331	\$474,263,313	\$55,641,805	\$3,391,727	\$658,374,176	\$54,864,515
FY 83-84	\$44,758,460	\$459,698,249	\$43,255,022	\$1,524,256	\$549,235,986	\$45,769,665
FY 84-85	\$55,880,090	\$455,791,830	\$21,309,253	\$1,763,379	\$534,744,551	\$44,562,046
FY 85-86	\$61,170,201	\$431,815,874	\$21,511,753	\$1,113,371	\$515,611,199	\$42,967,600
FY 86-87	\$25,942,570	\$354,879,094	\$17,665,672	\$1,606,832	\$400,094,168	\$33,341,181
FY 87-88	\$12,353,802	\$271,257,912	\$8,929,753	\$11,979,478	\$304,520,945	\$25,376,745
FY 88-89	\$28,745,161	\$239,046,099	\$5,812,014	\$843,904	\$274,447,179	\$22,870,598
FY 89-90	\$14,566,153	\$206,720,056	\$9,269,143	\$3,222,195	\$233,777,547	\$19,481,462
FY 90-91	\$11,165,526	\$253,746,520	\$9,211,891	\$5,203,730	\$279,327,667	\$23,277,306
FY 91-92	\$6,434,397	\$209,901,054	\$7,311,704	\$3,921,211	\$227,568,366	\$18,964,030
FY 92-93	\$8,440,252	\$261,813,228	\$4,740,303	\$13,900,890	\$288,894,674	\$24,074,556
FY 93-94	\$12,717,182	\$366,476,927	\$4,991,838	\$4,217,741	\$388,403,688	\$32,366,974
FY 94-95	\$24,823,265	\$246,335,063	\$7,203,636	\$3,218,058	\$281,580,022	\$23,465,002
FY 95-96	\$32,593,416	\$278,760,461	\$14,298,740	\$4,561,045	\$330,213,662	\$27,517,805
FY 96-97	\$53,288,169	\$295,576,020	\$22,314,560	\$4,249,293	\$375,428,041	\$31,285,670
FY 97-98	\$50,493,823	\$246,741,067	\$29,645,527	\$2,740,889	\$329,621,306	\$27,468,442
FY 98-99	\$19,050,657	\$178,424,388	\$21,074,412	\$2,531,361	\$221,080,819	\$18,423,402
FY 99-00	\$18,569,755	\$242,898,371	\$15,915,901	\$1,091,752	\$278,475,778	\$23,206,315
FY 00-01	\$32,740,448	\$435,407,994	\$12,663,749	\$2,842,244	\$483,654,435	\$40,304,536
FY 01-02	\$23,694,681	\$313,406,688	\$16,272,288	\$10,490,957	\$363,864,614	\$30,322,051
FY 02-03	\$22,598,580	\$374,872,047	\$14,874,075	\$21,524,326	\$433,869,028	\$36,155,752
FY 03-04	\$25,978,167	\$411,350,277	\$13,474,503	\$4,304,885	\$455,107,832	\$37,925,653
FY 04-05	\$38,696,837	\$459,982,045	\$13,769,854	\$43,902,608	\$556,351,343	\$46,362,612
FY 05-06	\$37,995,175	\$443,298,720	\$18,494,328	\$3,910,046	\$503,698,269	\$41,974,856
FY 06-07	\$52,139,307	\$522,453,427	\$25,057,910	\$1,335,183	\$600,985,827	\$50,082,152
	\$1,169,135,226	\$8,909,907,082	\$489,384,221	\$159,694,572	\$10,728,121,101	
% of Total	11%	83%	5%	1%		

Royalty Collections by Disposition Month

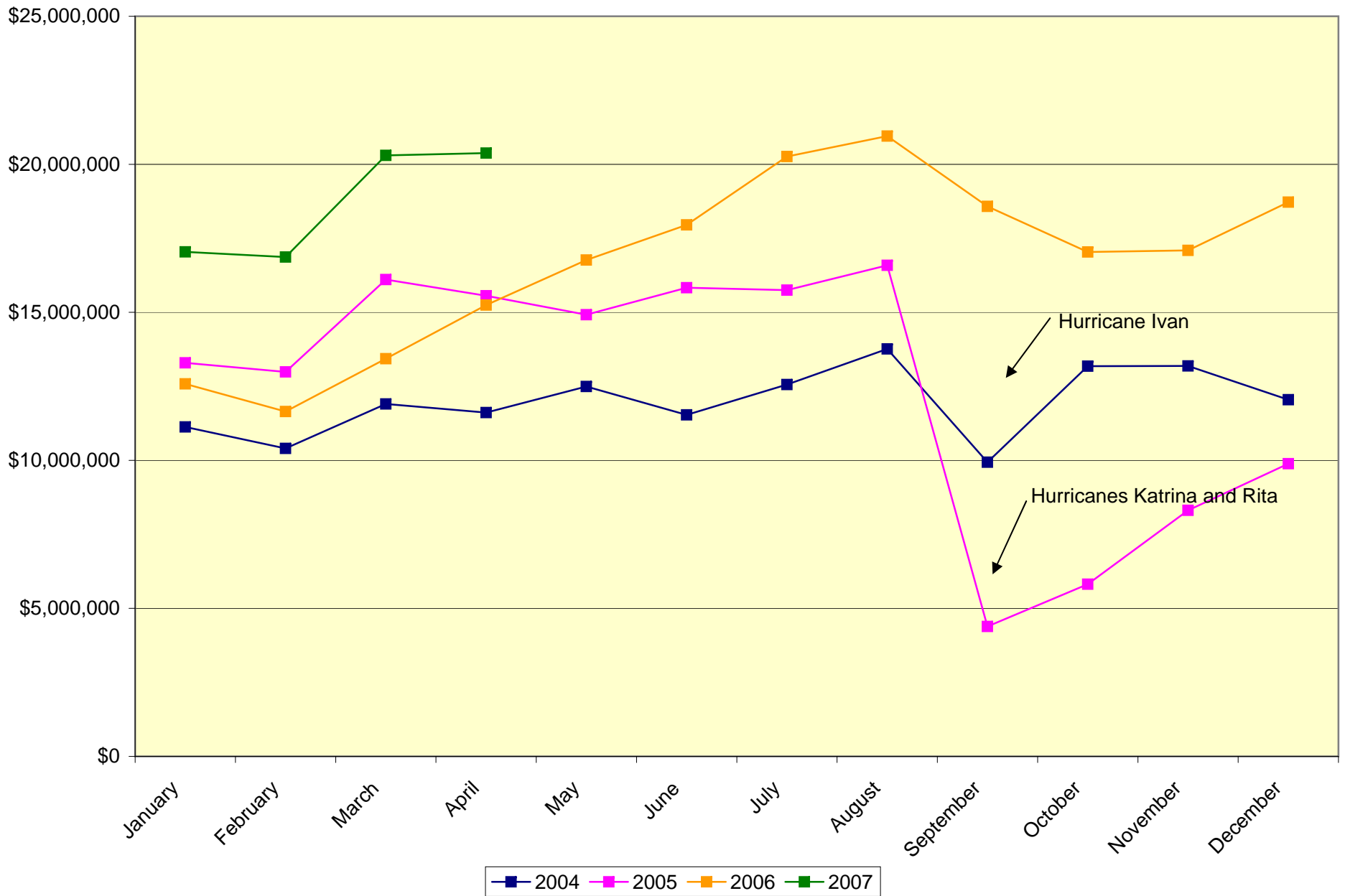


Oil Gas Plant Products

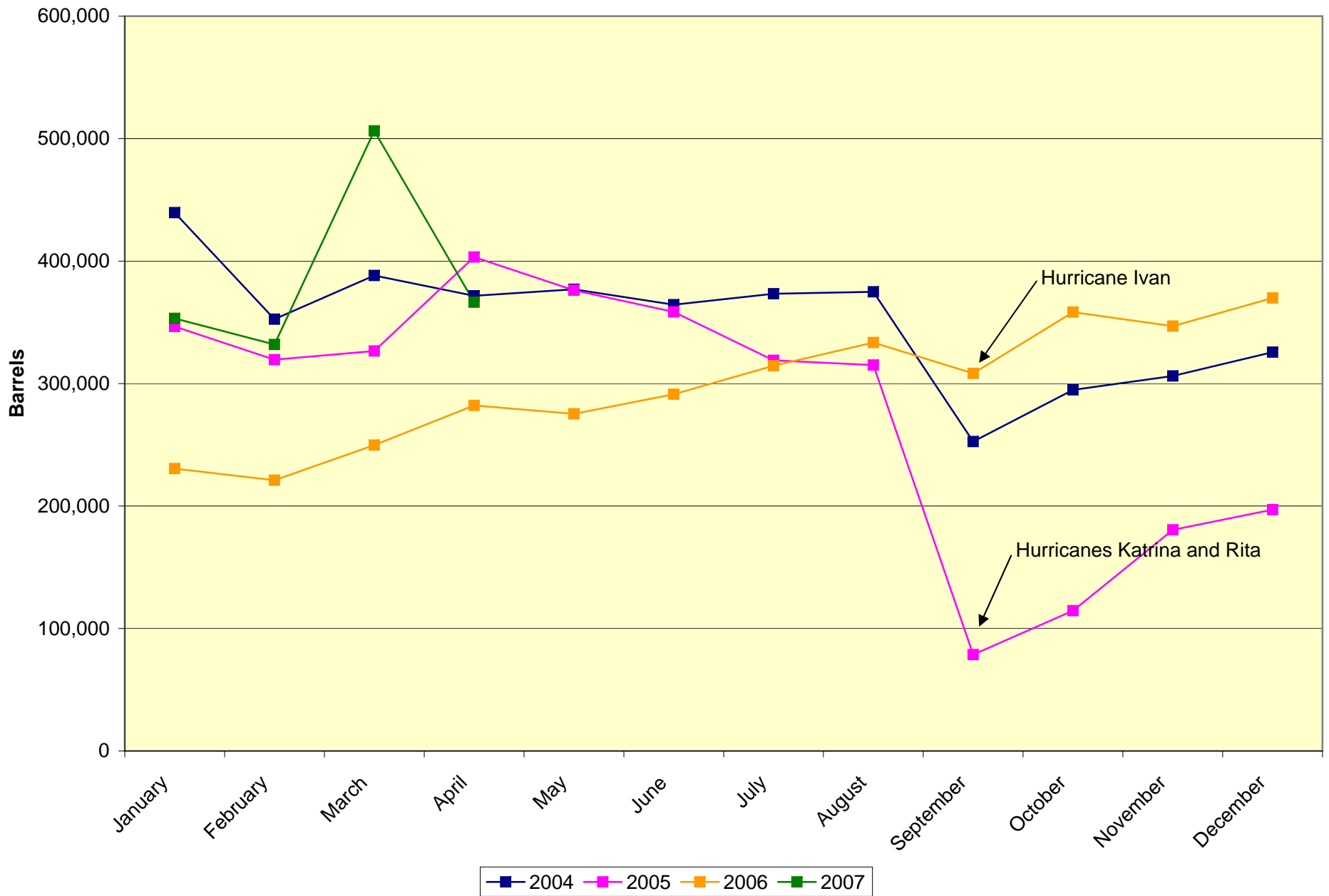
Royalty Collections by Disposition Month

<u>Disposition Month</u>	<u>Oil</u>	<u>Gas</u>	<u>Plant Products</u>	<u>Total</u>
March 2006	13,432,405.14	23,541,245.11	838,786.36	37,812,436.61
April 2006	15,246,163.89	24,950,445.66	886,908.11	41,083,517.66
May 2006	16,767,147.05	24,022,228.68	1,054,857.60	41,844,233.33
June 2006	17,954,362.57	22,138,996.39	1,365,282.25	41,458,641.21
July 2006	20,261,945.84	23,668,870.26	1,657,085.58	45,587,901.68
August 2006	20,954,379.30	25,085,415.95	1,550,570.12	47,590,365.37
September 2006	18,578,676.58	15,172,166.97	1,359,542.74	35,110,386.29
October 2006	17,037,617.88	20,209,972.35	1,273,948.11	38,521,538.34
November 2006	17,091,488.70	25,626,079.43	1,224,723.96	43,942,292.09
December 2006	18,722,743.24	32,486,625.88	1,169,360.83	52,378,729.95
January 2007	17,040,996.35	30,628,157.61	1,123,533.64	48,792,687.60
February 2007	16,867,229.10	23,633,460.91	1,192,473.75	41,693,163.76
March 2007	20,299,418.22	22,815,027.95	1,227,614.51	44,342,060.68
Total	\$ 230,254,573.86	\$ 313,978,693.15	\$ 15,924,687.56	\$ 560,157,954.57
% of Total	41%	56%	3%	

Oil Royalty by Disposition Month



Oil Volume by Disposition Month

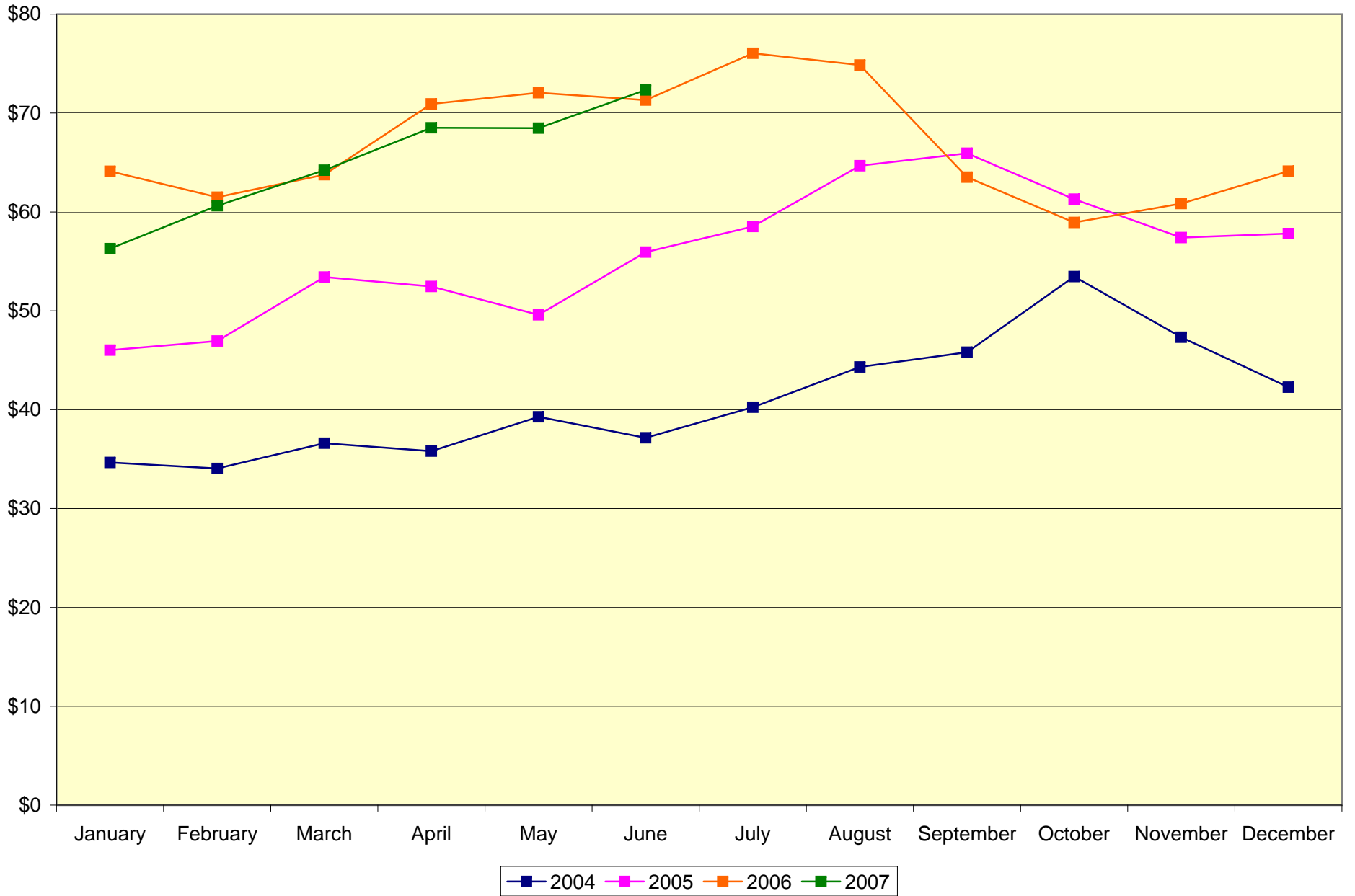


Oil Volume by Disposition Month

<u>Disposition Month</u>	<u>Barrels</u>
January 2004	439,528.9609
February 2004	352,554.1807
March 2004	388,250.3056
April 2004	371,664.9497
May 2004	376,944.4191
June 2004	364,373.3908
July 2004	373,376.3670
August 2004	374,957.0454
September 2004	252,648.3494
October 2004	294,836.0875
November 2004	306,161.9020
December 2004	325,615.3498
January 2005	346,649.9583
February 2005	319,488.9552
March 2005	326,616.0177
April 2005	403,344.9727
May 2005	376,224.1649
June 2005	358,510.1802
July 2005	318,987.8163
August 2005	315,098.6694
September 2005	78,717.2116
October 2005	114,523.0571
November 2005	180,613.6887
December 2005	197,040.2901
January 2006	230,564.5730
February 2006	221,104.6409
March 2006	249,793.9773
April 2006	282,196.3841
May 2006	275,272.0913
June 2006	291,287.8112
July 2006	314,604.0645
August 2006	333,467.8675
September 2006	308,335.6018
October 2006	358,303.8979
November 2006	346,913.9945
December 2006	369,934.9935
January 2007	353,234.4389
February 2007	331,931.9936
March 2007	506,327.3730
April 2007	366,455.6247

Oil Prices

Average of HLS Oil Spot at Empire Pla. Parish \$/bbl. and LLS Oil Spot at St. James Terminal \$/bbl.

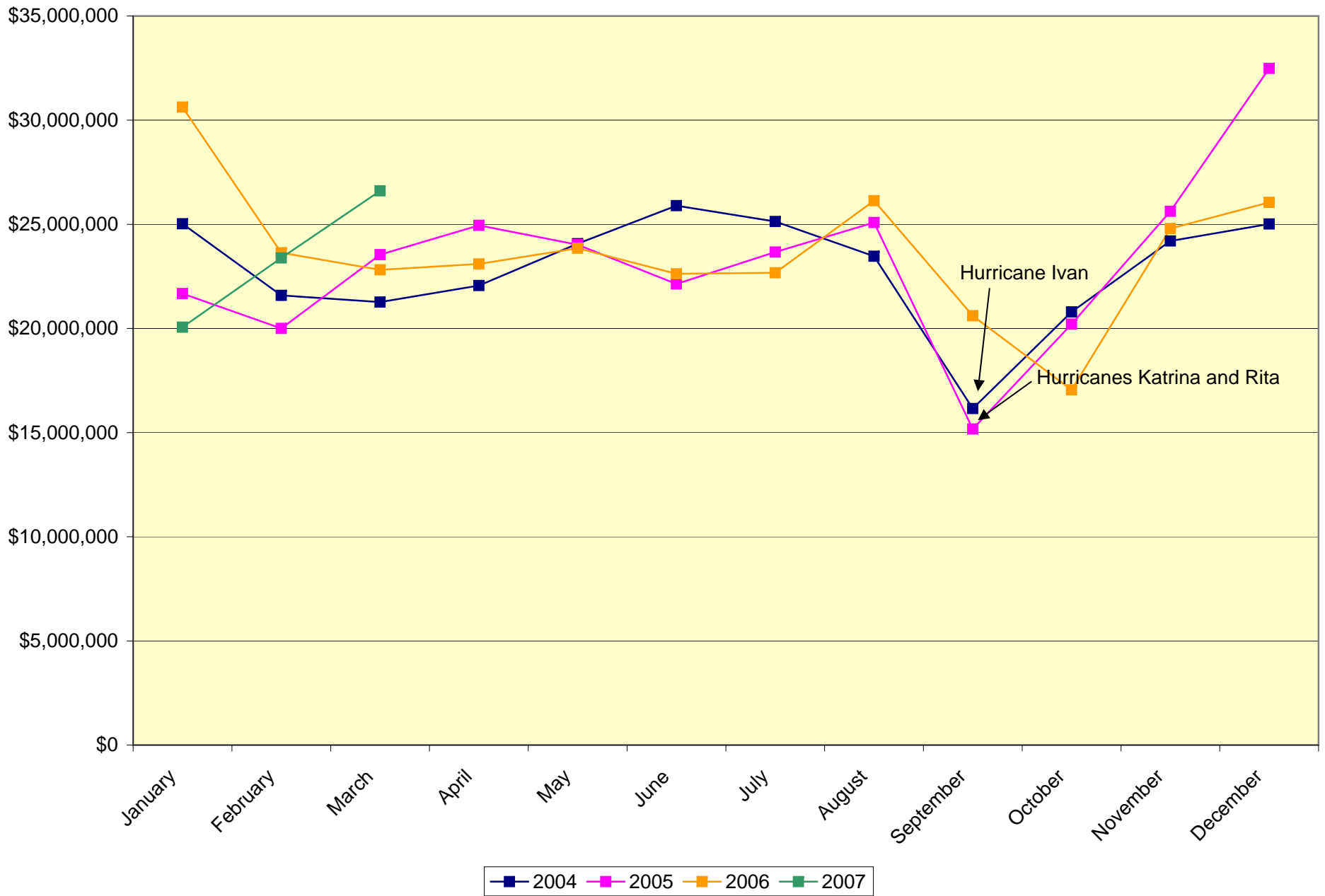


Monthly Average Oil Prices

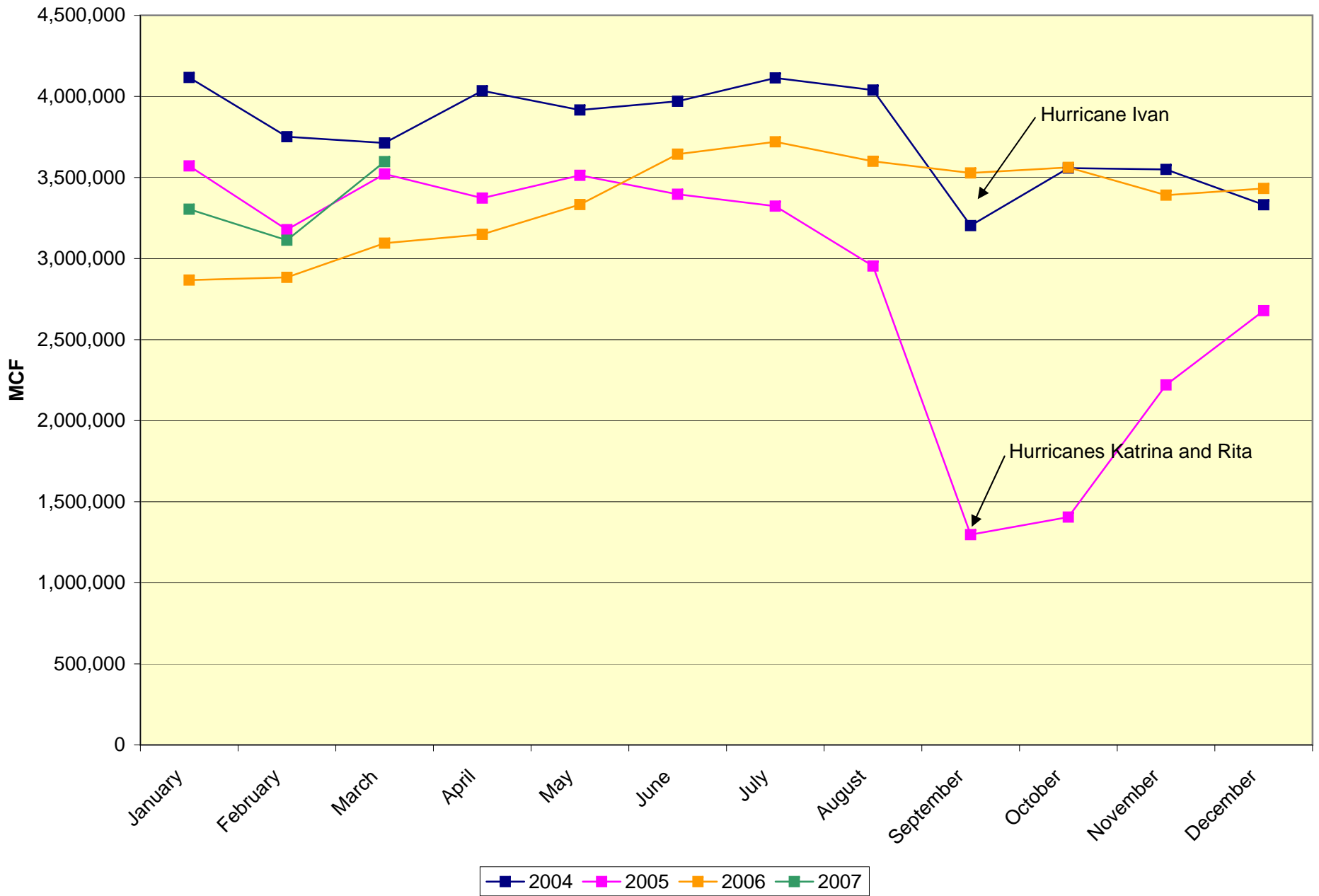
Jan-04	\$34.66
Feb-04	\$34.05
Mar-04	\$36.60
Apr-04	\$35.80
May-04	\$39.28
Jun-04	\$37.15
Jul-04	\$40.24
Aug-04	\$44.32
Sep-04	\$45.81
Oct-04	\$53.46
Nov-04	\$47.33
Dec-04	\$42.28
Jan-05	\$46.02
Feb-05	\$46.94
Mar-05	\$53.42
Apr-05	\$52.46
May-05	\$49.59
Jun-05	\$55.94
Jul-05	\$58.53
Aug-05	\$64.67
Sep-05	\$65.93
Oct-05	\$61.29
Nov-05	\$57.41
Dec-05	\$57.81
Jan-06	\$64.11
Feb-06	\$61.49
Mar-06	\$63.76
Apr-06	\$70.92
May-06	\$72.06
Jun-06	\$71.31
Jul-06	\$76.04
Aug-06	\$74.85
Sep-06	\$63.52
Oct-06	\$58.93
Nov-06	\$60.85
Dec-06	\$64.12
Jan-07	\$56.29
Feb-07	\$61.27
Mar-07	\$64.22
Apr-07	\$68.51
May-07	\$68.48
Jun-07	\$72.34 MTD as of 6/26/07

Source: Average of HLS Oil Spot @ Empire Pla. Parish \$/bbl. and LLS Oil Spot @ St. James Terminal \$/bbl.

Gas Royalty by Disposition Month



Gas Volume by Disposition Month

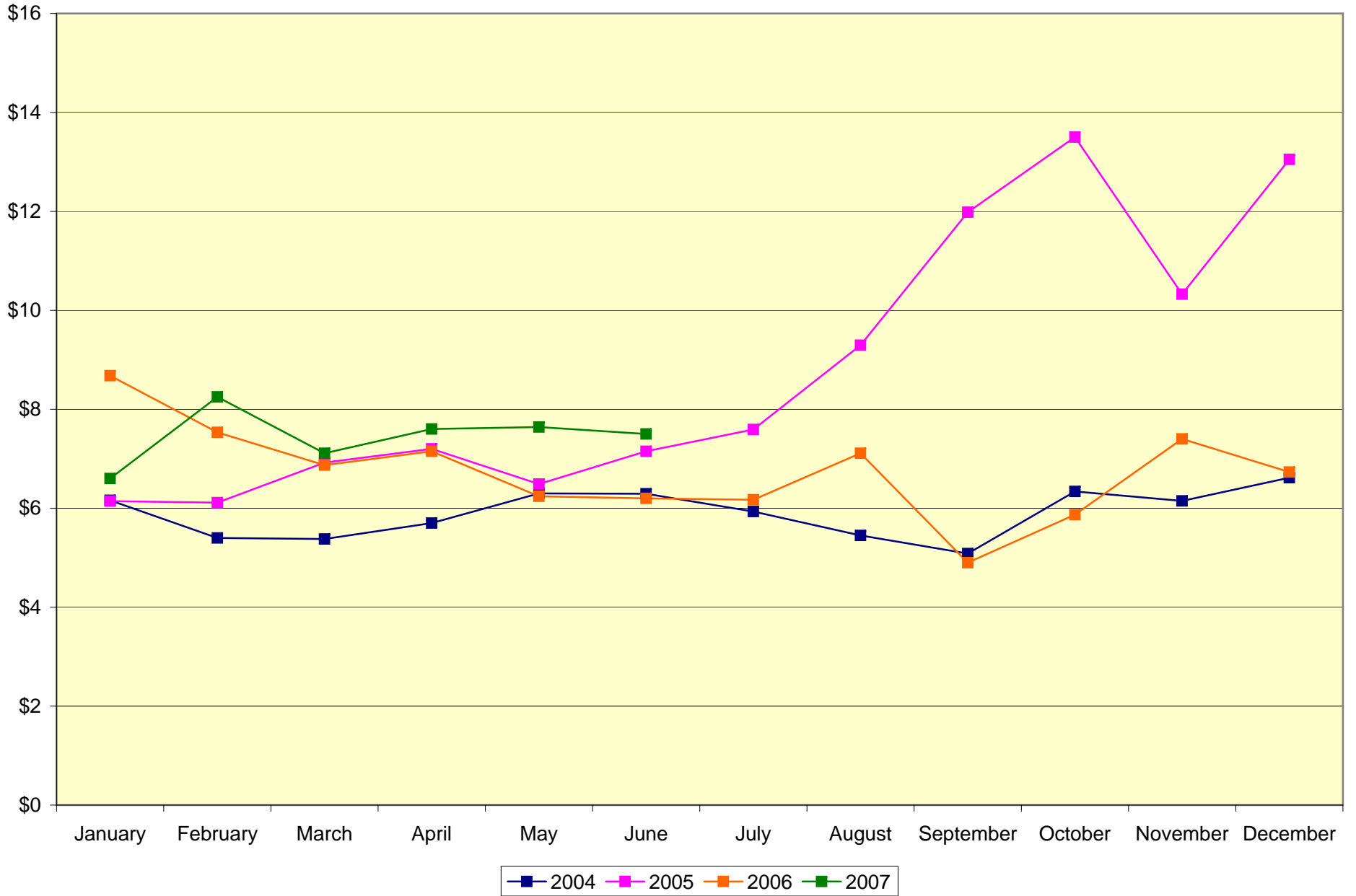


Gas Volume by Disposition Month

<u>Disposition Month</u>	<u>MCF</u>
January 2004	4,116,851.7031
February 2004	3,751,396.3749
March 2004	3,712,684.6945
April 2004	4,034,822.4874
May 2004	3,916,088.2692
June 2004	3,969,900.0143
July 2004	4,113,654.6443
August 2004	4,039,039.5326
September 2004	3,203,047.0172
October 2004	3,557,609.2440
November 2004	3,549,434.2038
December 2004	3,331,205.5308
January 2005	3,571,416.8166
February 2005	3,177,806.4534
March 2005	3,521,160.7443
April 2005	3,372,478.9637
May 2005	3,512,957.8629
June 2005	3,396,781.1370
July 2005	3,323,233.6062
August 2005	2,953,451.1089
September 2005	1,297,099.2914
October 2005	1,405,215.9784
November 2005	2,220,345.2608
December 2005	2,678,706.1713
January 2006	2,867,382.7509
February 2006	2,883,642.2067
March 2006	3,094,445.1401
April 2006	3,149,365.1967
May 2006	3,332,911.7309
June 2006	3,643,489.1258
July 2006	3,719,968.1341
August 2006	3,599,406.0428
September 2006	3,528,019.0185
October 2006	3,561,892.0075
November 2006	3,390,954.1414
December 2006	3,432,446.0408
January 2007	3,304,619.4605
February 2007	3,112,770.2410
March 2007	3,597,513.1895

Natural Gas Prices

Daily Cash Gas Prices at Henry Hubb \$/mmbtu.

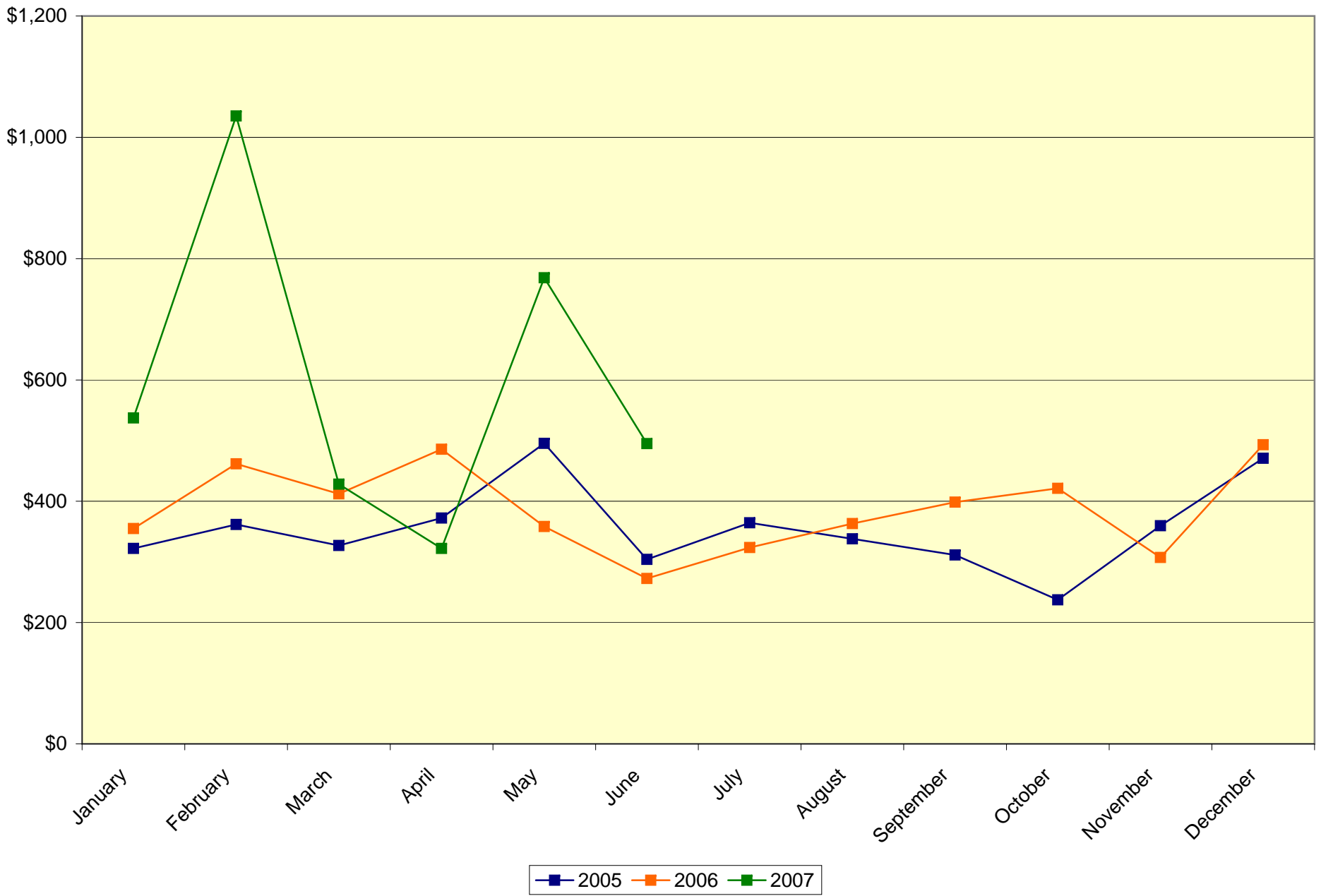


Monthly Average Gas Prices

Jan-04	\$6.1581
Feb-04	\$5.3982
Mar-04	\$5.3784
Apr-04	\$5.7004
May-04	\$6.3000
Jun-04	\$6.2916
Jul-04	\$5.9325
Aug-04	\$5.4506
Sep-04	\$5.0832
Oct-04	\$6.3392
Nov-04	\$6.1481
Dec-04	\$6.6166
Jan-05	\$6.1431
Feb-05	\$6.1124
Mar-05	\$6.9229
Apr-05	\$7.2004
May-05	\$6.4880
Jun-05	\$7.1507
Jul-05	\$7.5910
Aug-05	\$9.2947
Sep-05	\$11.9823
Oct-05	\$13.5015
Nov-05	\$10.3271
Dec-05	\$13.0519
Jan-06	\$8.6780
Feb-06	\$7.5332
Mar-06	\$6.8700
Apr-06	\$7.1500
May-06	\$6.2400
Jun-06	\$6.2000
Jul-06	\$6.1700
Aug-06	\$7.1100
Sep-06	\$4.9000
Oct-06	\$5.8700
Nov-06	\$7.4000
Dec-06	\$6.7300
Jan-07	\$6.6000
Feb-07	\$8.0100
Mar-07	\$7.1100
Apr-07	\$7.6100
May-07	\$7.6400
Jun-07	\$7.5000 MTD as of 6/26/07

Source: Daily Cash Gas Prices @ Henry Hubb \$/mmbtu.

Price Per Acre



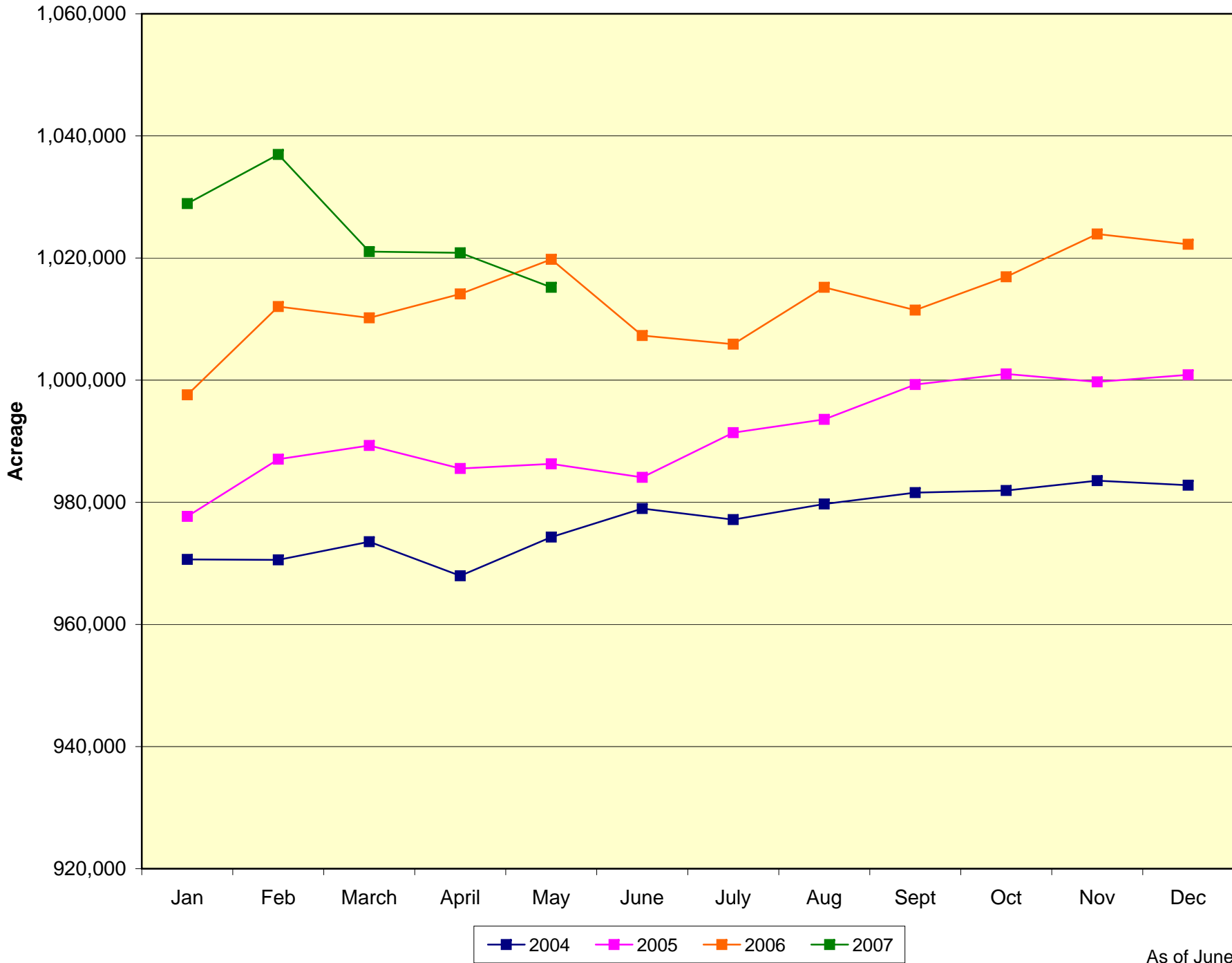
As of June 13, 2007 Lease Sale

Department of Natural Resources
Office of Mineral Resources
Lease Sale Statistics
For Calendar Years 2005, 2006 and 2007

<u>Month</u>	<u>No. of Tracts Nominated</u>	<u>No. of Acres Nominated</u>	<u>No. of Tracts with Bids</u>	<u>% of Nominated Tracts with Bids</u>	<u>No. of Leases</u>	<u>No. of Acres Leased</u>	<u>Total Bonuses</u>	<u>Price Per Acre</u>
January 2005	47	28,880.060	23	48.9%	24	3,472.910	\$1,118,950.28	\$322.19
February 2005	139	155,224.529	50	36.0%	54	15,760.712	\$5,701,671.68	\$361.76
March 2005	64	68,473.920	17	26.6%	18	9,143.270	\$2,990,636.00	\$327.09
April 2005	46	50,416.840	26	56.5%	30	9,349.020	\$3,480,941.06	\$372.33
May 2005	95	115,385.349	43	45.3%	47	10,719.221	\$5,311,157.78	\$495.48
June 2005	94	123,785.140	42	44.7%	42	8,891.850	\$2,703,889.29	\$304.09
July 2005	148	152,777.690	52	35.1%	52	12,760.260	\$4,650,705.09	\$364.47
August 2005	112	165,294.170	39	34.8%	40	5,431.630	\$1,836,091.87	\$338.04
September 2005	110	125,382.280	42	38.2%	42	17,996.140	\$5,604,577.63	\$311.43
October 2005	36	19,207.590	31	86.1%	31	5,577.800	\$1,324,037.01	\$237.38
November 2005	58	50,384.311	24	41.4%	24	4,484.061	\$1,612,996.95	\$359.72
December 2005	75	88,898.390	28	37.3%	33	8,547.410	\$4,024,433.63	\$470.84
January 2006	47	47,043.313	23	48.9%	26	4,329.743	\$1,537,320.39	\$355.06
February 2006	30	27,775.390	22	73.3%	21	4,893.650	\$2,259,041.24	\$461.63
March 2006	90	102,468.214	33	36.7%	35	11,677.774	\$4,813,881.28	\$412.23
April 2006	68	71,781.410	28	41.2%	30	6,467.852	\$3,141,523.23	\$485.71
May 2006	97	120,198.400	30	30.9%	31	16,817.780	\$6,025,369.95	\$358.27
June 2006	38	31,183.565	23	60.5%	21	3,267.685	\$890,923.62	\$272.65
July 2006	46	61,199.576	17	37.0%	19	4,912.022	\$1,590,293.21	\$323.76
August 2006	98	144,142.110	37	37.8%	47	11,769.250	\$4,274,006.81	\$363.15
September 2006	48	44,760.880	26	54.2%	23	5,029.740	\$2,004,961.50	\$398.62
October 2006	53	36,007.870	28	52.8%	28	4,383.700	\$1,846,724.83	\$421.27
November 2006	93	84,329.325	43	46.2%	38	16,457.630	\$5,058,312.37	\$307.35
December 2006	72	58,722.376	37	51.4%	42	4,490.056	\$2,214,236.41	\$493.14
January 2007	44	43,615.048	23	52.3%	22	8,504.439	\$4,569,069.37	\$537.26
February 2007	61	68,927.865	36	59.0%	39	10,701.885	\$11,078,923.37	\$1,035.23
March 2007	37	55,261.795	19	51.4%	23	5,996.295	\$2,567,201.33	\$428.13
April 2007	58	60,473.270	22	37.9%	24	10,087.120	\$3,250,525.86	\$322.25
May 2007	77	67,181.820	40	51.9%	44	6,303.810	\$4,844,311.64	\$768.47
June 2007	99	159,363.198	31	31.3%	31	8,098.128	4,008,594.40	\$495.00

SONRIS Source Reports:
Lease Sale Summary
Lease Sale Fiscal Year
YTD Tracts and Acreage Report
Lease Sale Statistics

State Acreage Under Lease

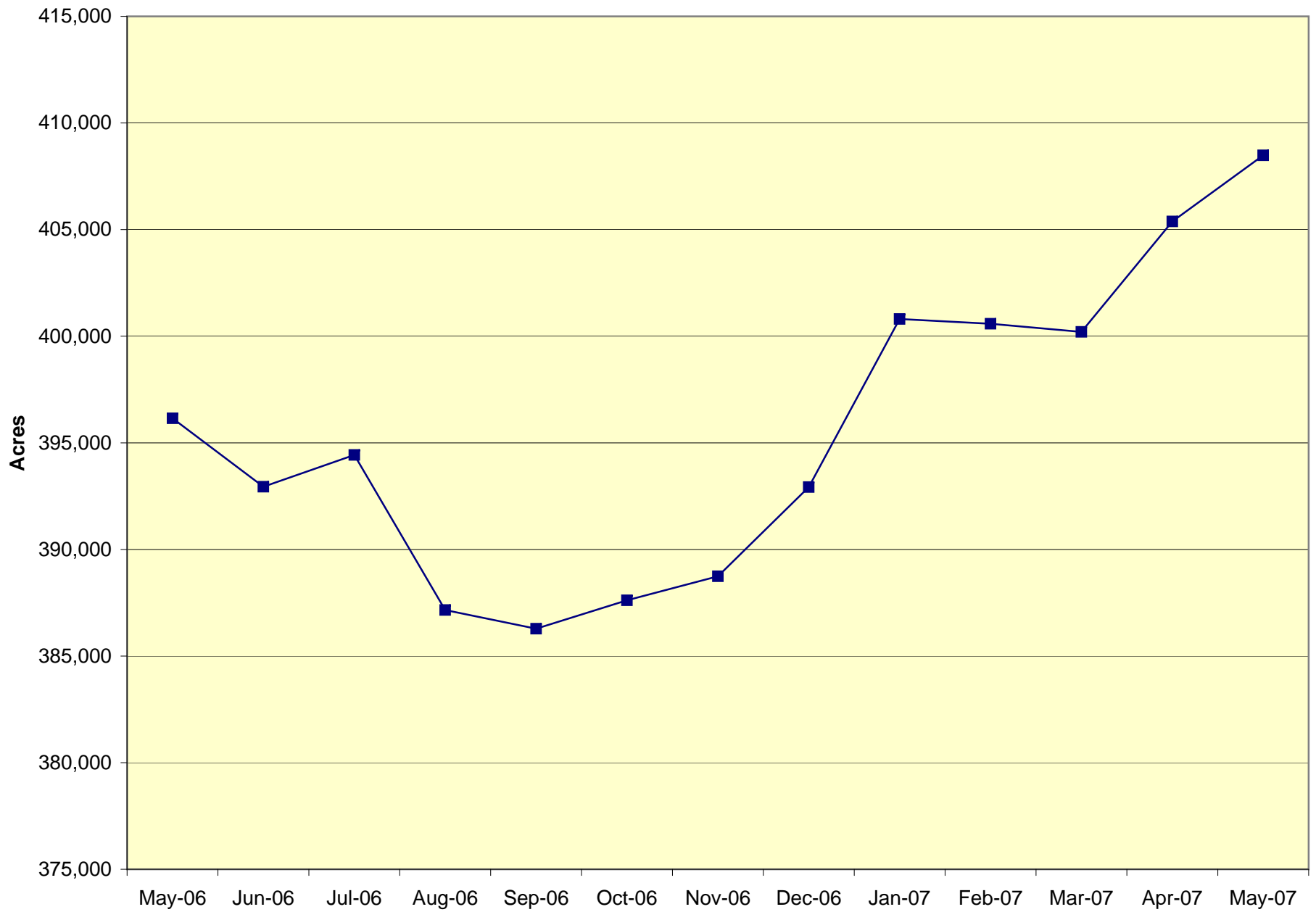


As of June 1, 2007

State Acreage Under Lease

<u>Month/Year</u>	<u>Acreage</u>
January 2004	970,647
February 2004	970,566
March 2004	973,551
April 2004	967,958
May 2004	974,311
June 2004	978,972
July 2004	977,175
August 2004	979,727
September 2004	981,595
October 2004	981,936
November 2004	983,547
December 2004	982,793
January 2005	977,687
February 2005	987,060
March 2005	989,296
April 2005	985,526
May 2005	986,287
June 2005	984,084
July 2005	991,395
August 2005	993,569
September 2005	999,285
October 2005	1,001,031
November 2005	999,714
December 2005	1,000,881
January 2006	997,605
February 2006	1,012,059
March 2006	1,010,201
April 2006	1,014,111
May 2006	1,019,784
June 2006	1,007,301
July 2006	1,005,887
August 2006	1,015,199
September 2006	1,011,473
October 2006	1,016,921
November 2006	1,023,932
December 2006	1,022,243
January 2007	1,028,925
February 2007	1,036,953
March 2007	1,021,053
April 2007	1,020,861
May 2007	1,015,199

Productive Acres



Productive Acres

<u>Month/Year</u>	<u>Acres</u>
May 2006	396,152
June 2006	392,939
July 2006	394,429
August 2006	387,157
September 2006	386,280
October 2006	387,616
November 2006	388,739
December 2006	392,925
January 2007	400,806
February 2007	400,586
March 2007	400,203
April 2007	405,380
May 2007	408,484